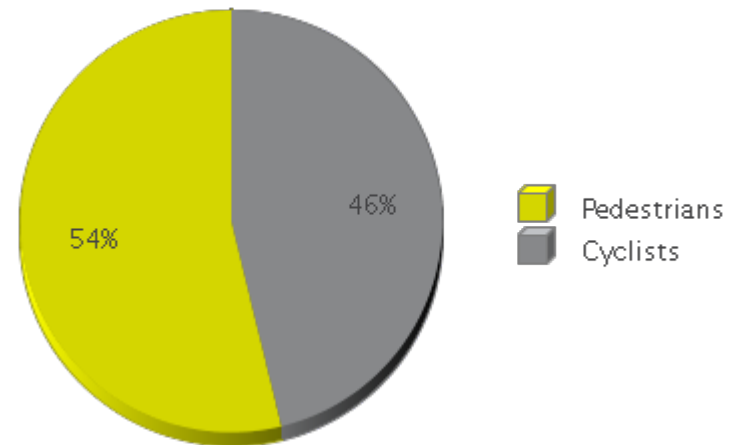


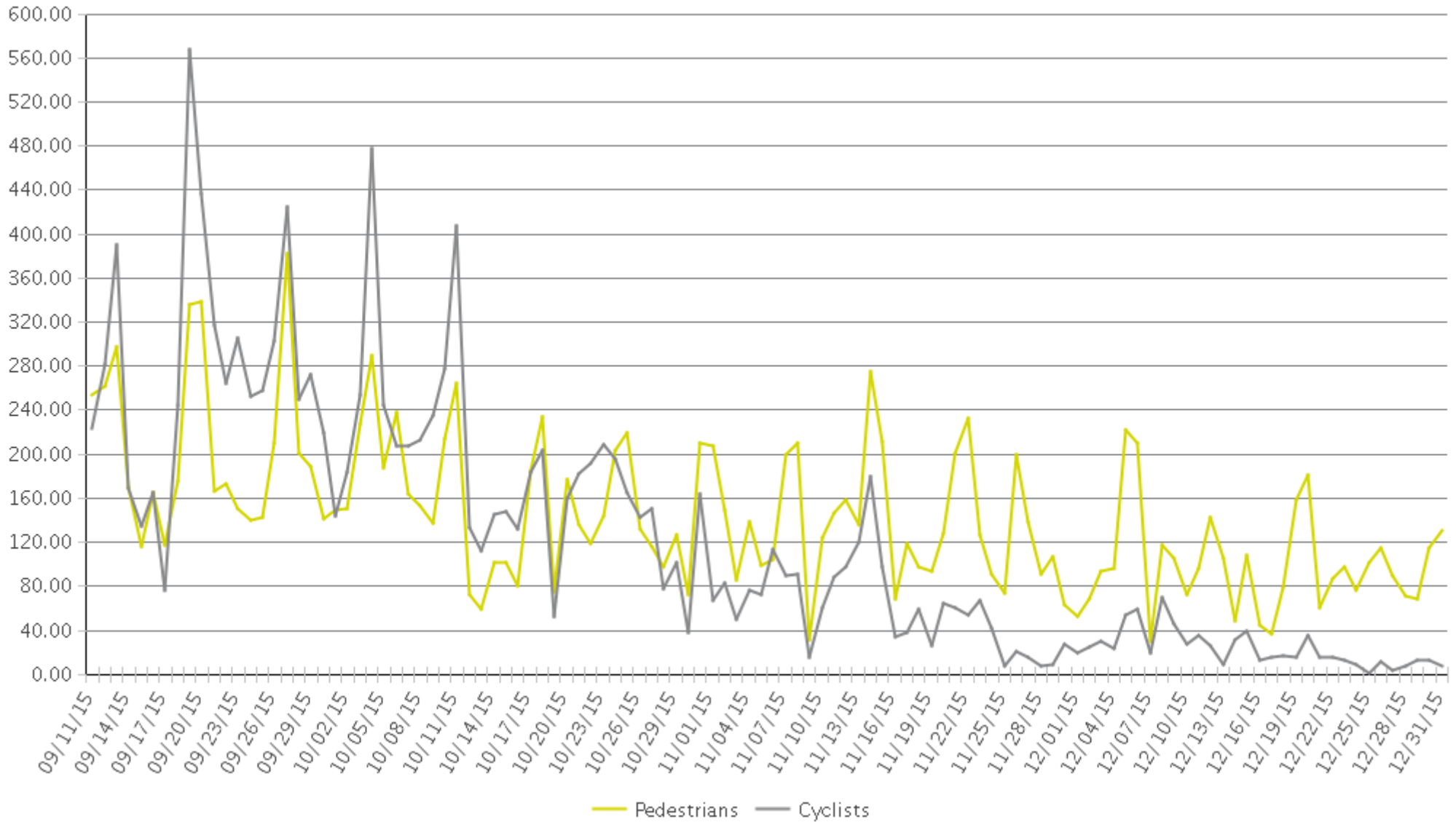


	Total Traffic for the Analyzed Period	Daily Average	Busiest Day of the Week	Busiest Month of the Year	Distribution %	
					In = West	Out = East
Pedestrians	16,148	144	Sunday	October 15: 4,835	54%	46%
Cyclists	13,854	124	Sunday	October 15: 5,736	47%	53%

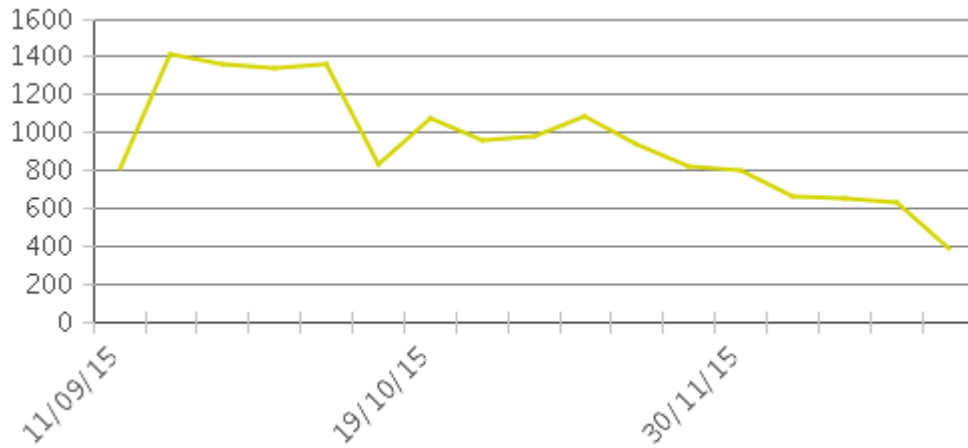




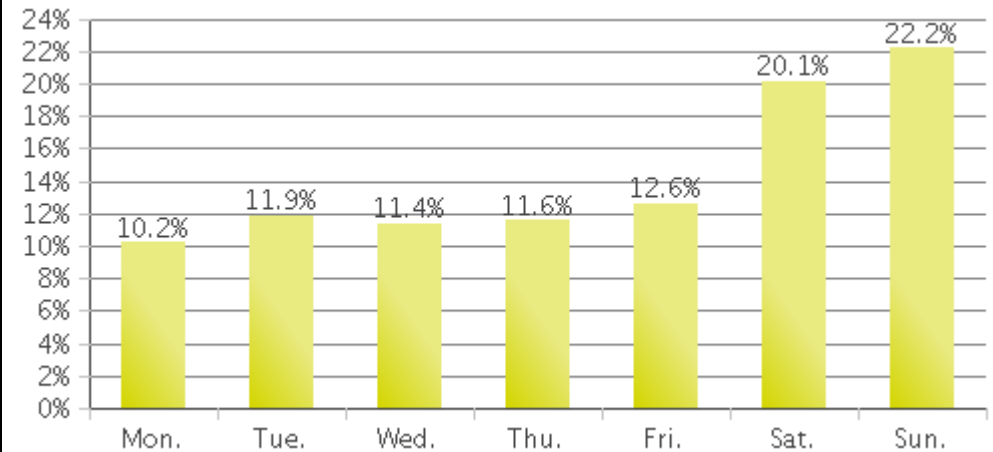
Boise River Greenbelt - Eckert Bridge
Period Analyzed: Friday, September 11, 2015 to Thursday, December 31, 2015



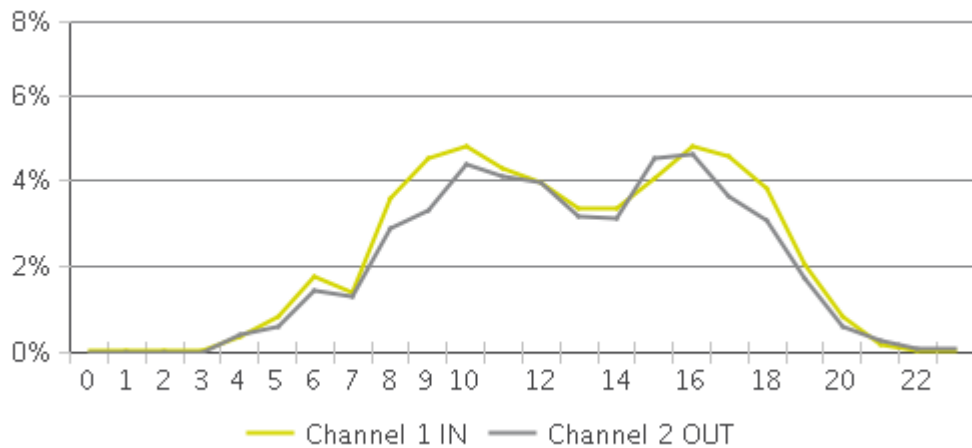
Weekly Traffic



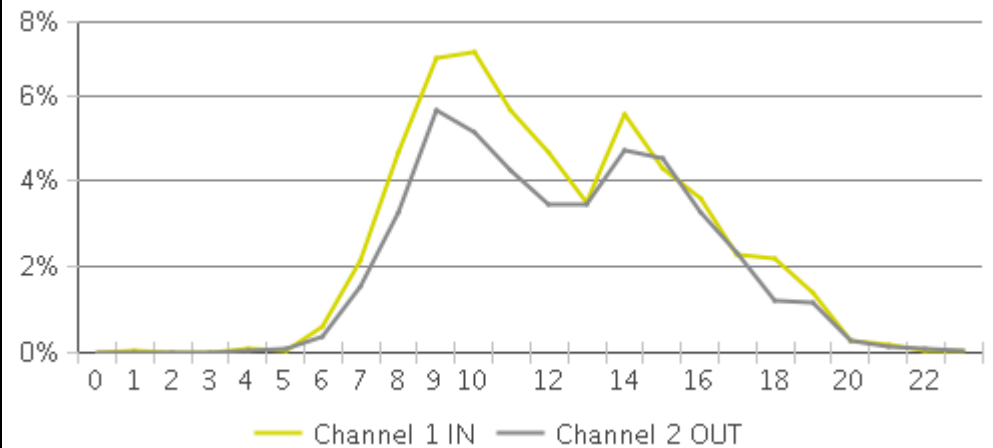
Weekly Profile



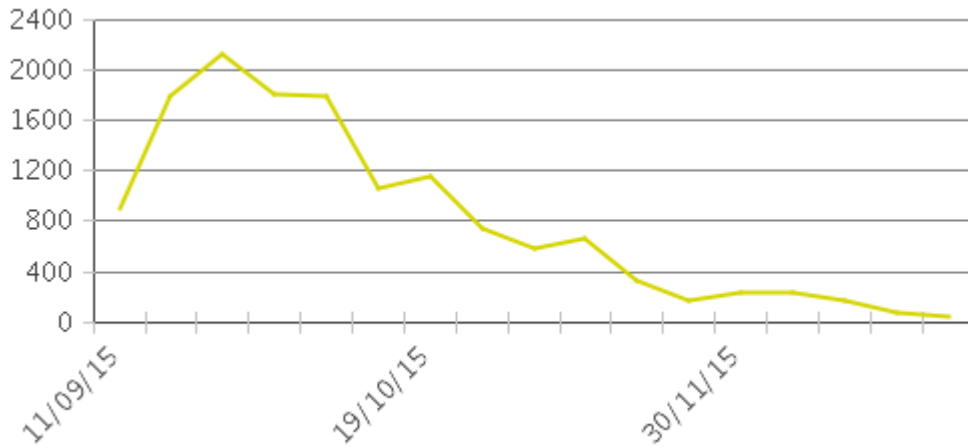
Hourly Profile during Weekdays



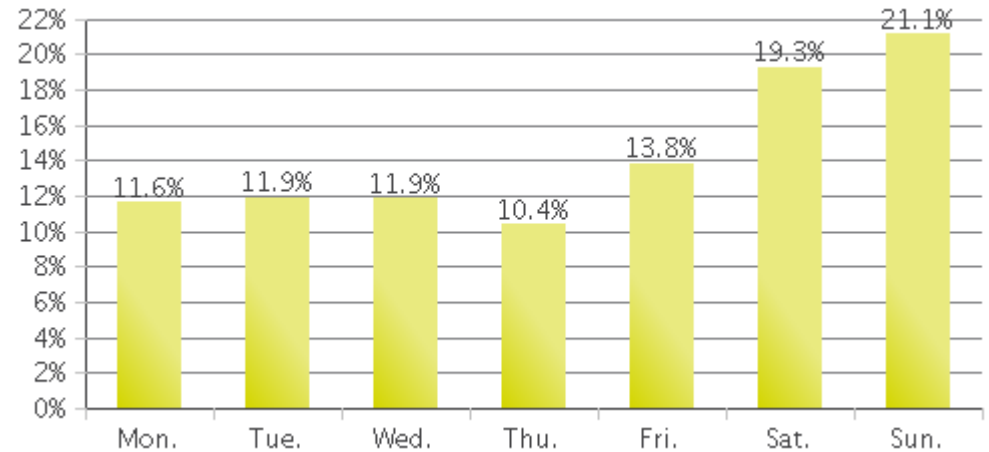
Hourly Profile during the Weekend



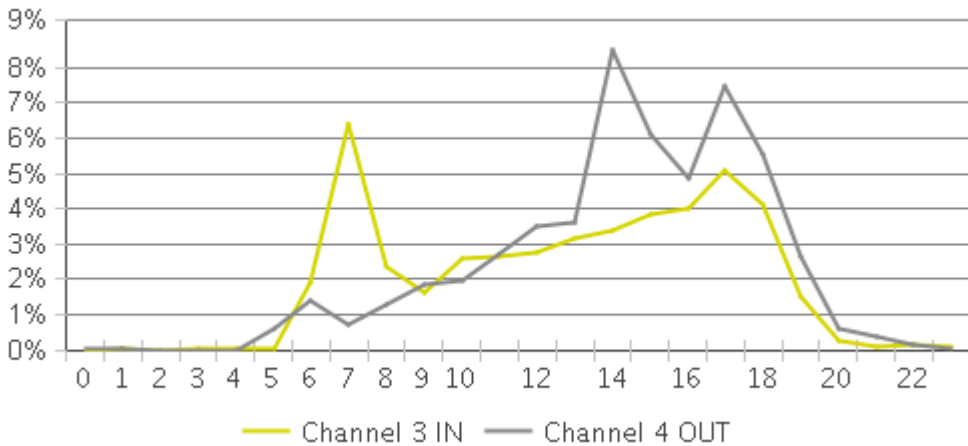
Weekly Traffic



Weekly Profile



Hourly Profile during Weekdays



Hourly Profile during the Weekend

