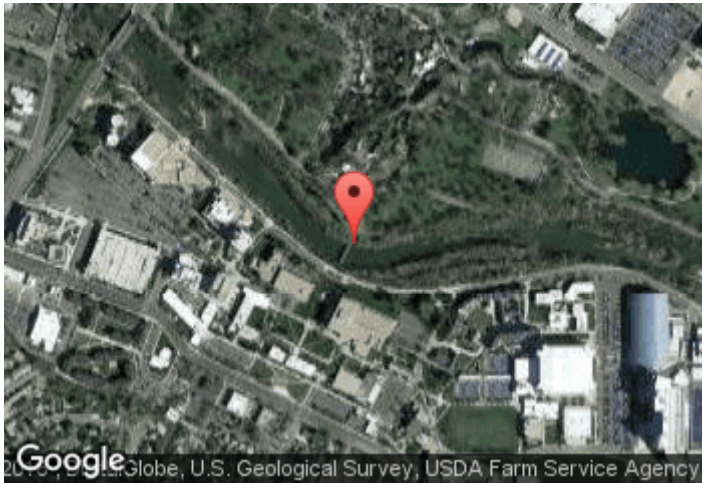
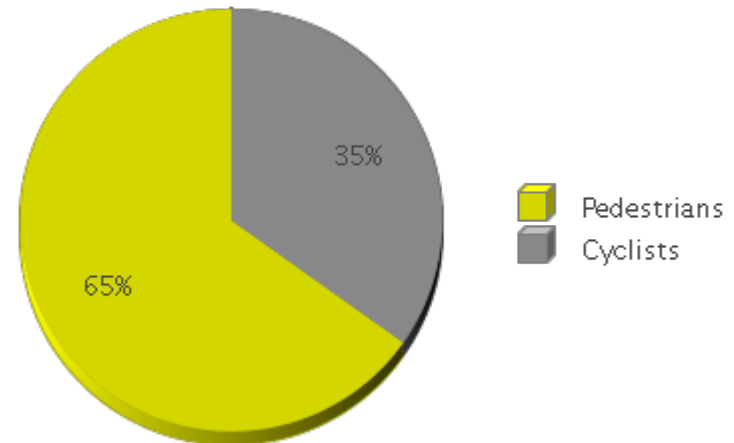


Boise River Greenbelt - Friendship Bridge

Period Analyzed: Thursday, August 20, 2015 to Thursday, December 31, 2015



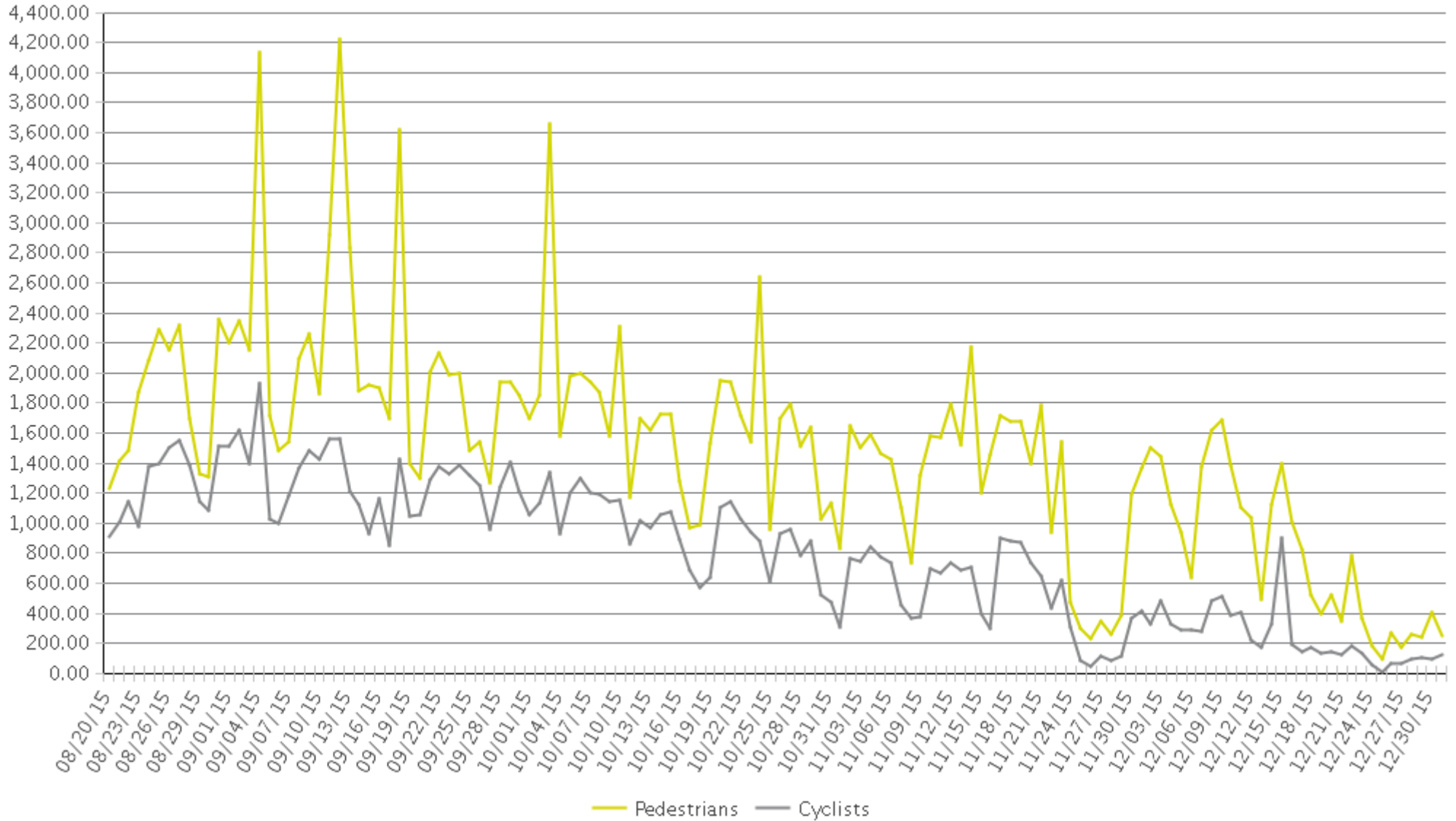
	Total Traffic for the Analyzed Period	Daily Average	Busiest Day of the Week	Busiest Month of the Year	Distribution %	
					In = South	Out = North
Pedestrians	199,511	1,489	Tuesday	September 15: 63,615	53%	47%
Cyclists	106,655	796	Tuesday	September 15: 38,616	54%	46%





Boise River Greenbelt - Friendship Bridge

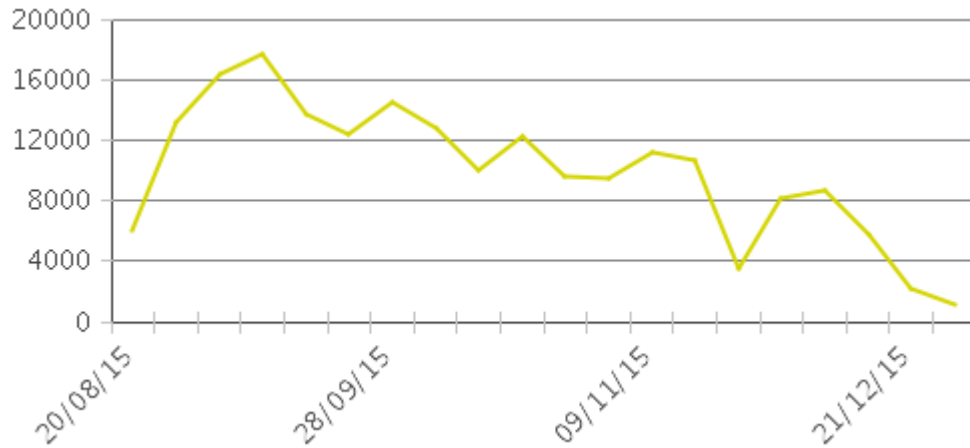
Period Analyzed: Thursday, August 20, 2015 to Thursday, December 31, 2015



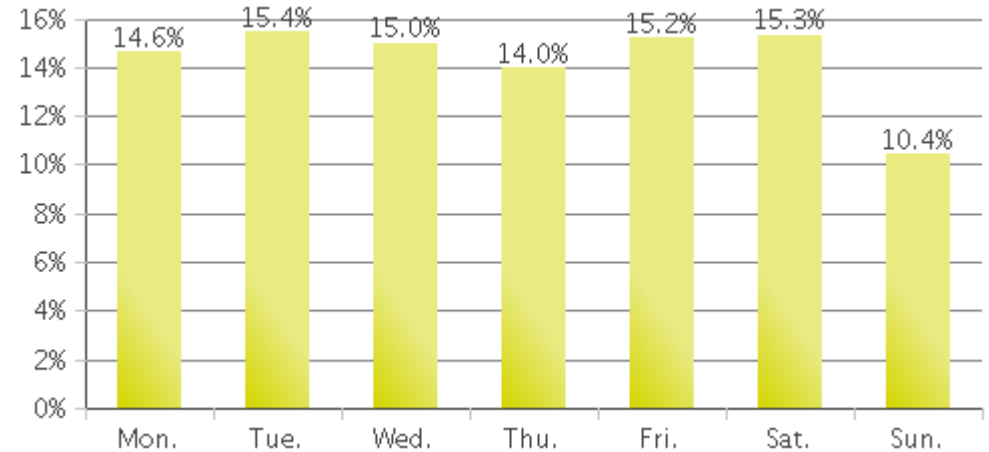
Boise - Friendship Bridge (Pedestrians)

Period Analyzed: Thursday, August 20, 2015 to Thursday, December 31, 2015

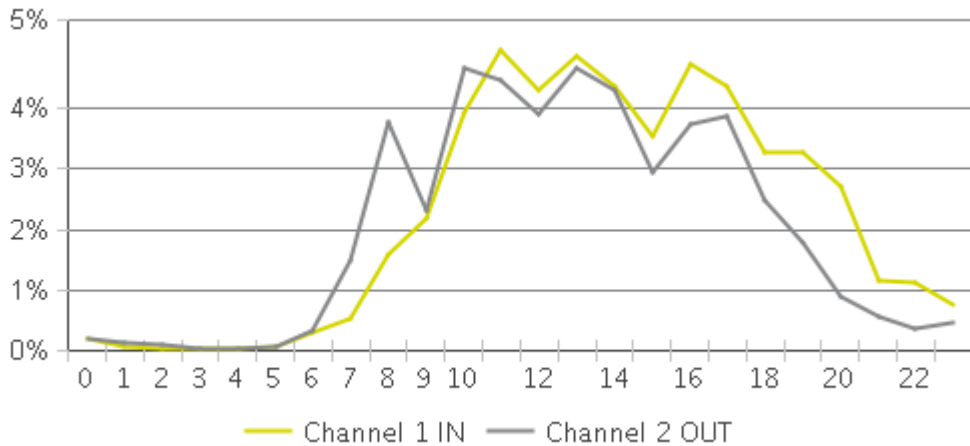
Weekly Traffic



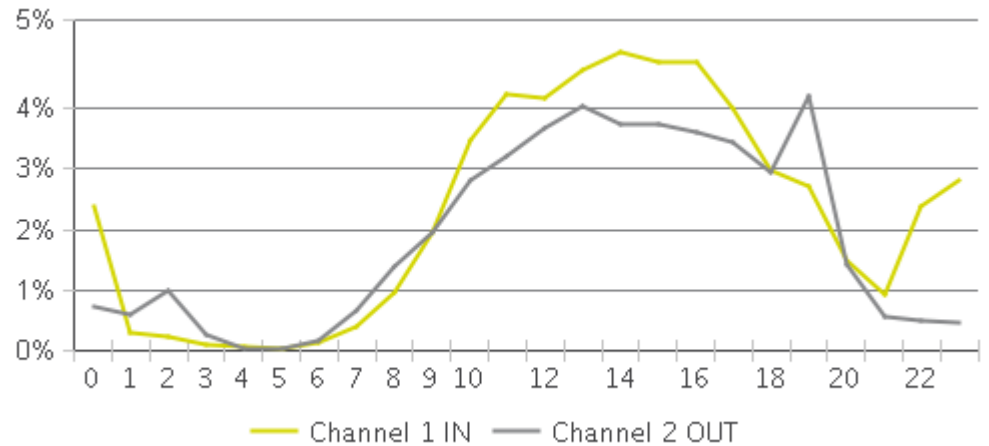
Weekly Profile



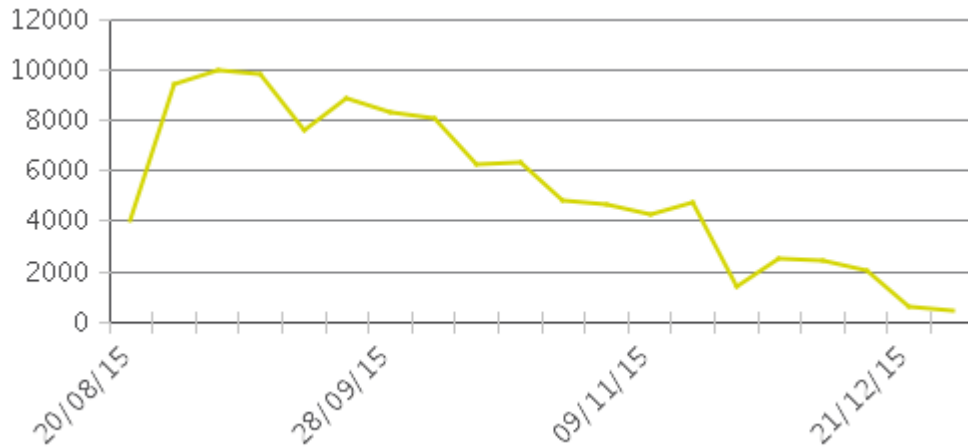
Hourly Profile during Weekdays



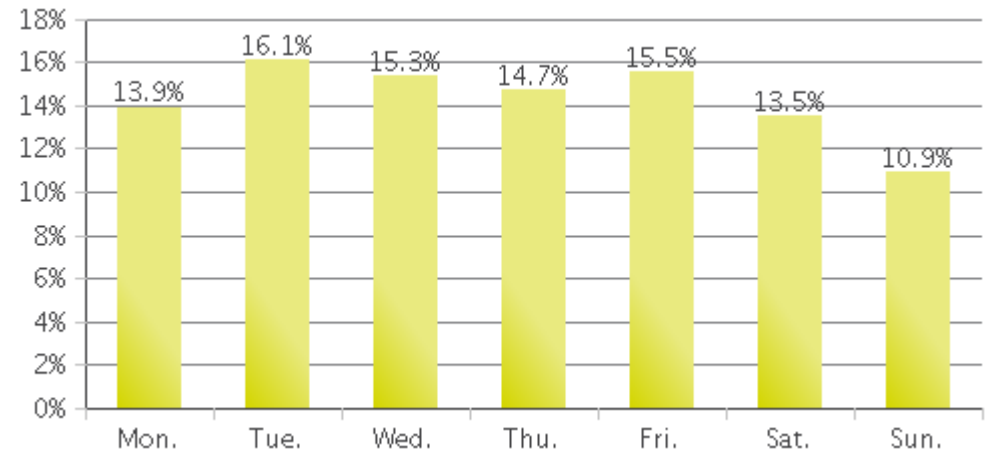
Hourly Profile during the Weekend



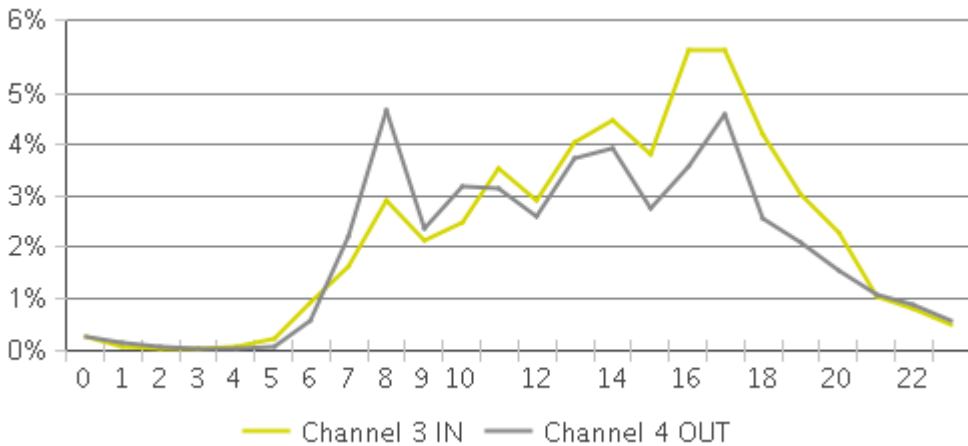
Weekly Traffic



Weekly Profile



Hourly Profile during Weekdays



Hourly Profile during the Weekend

