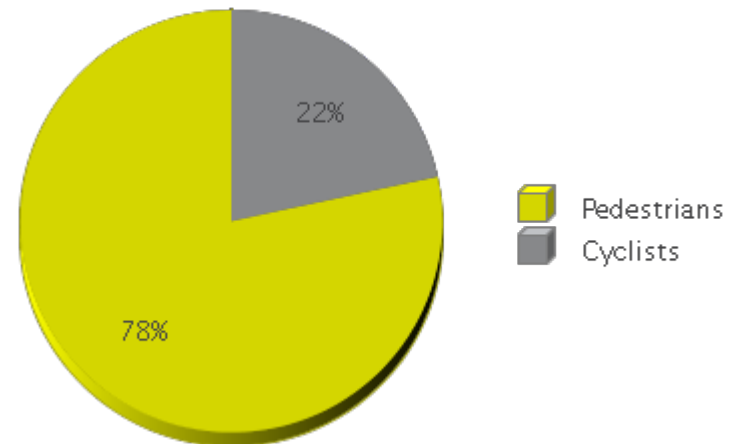


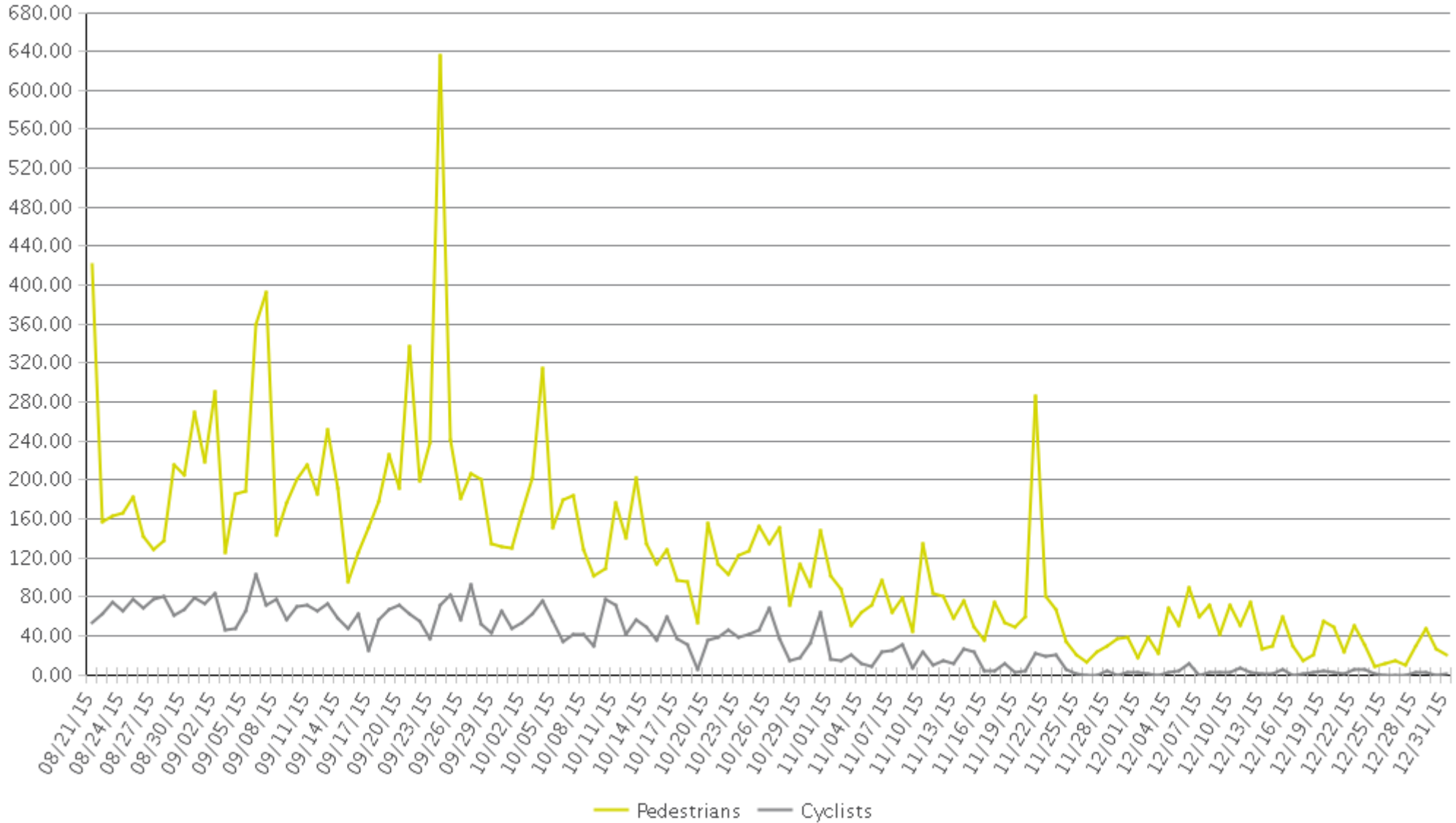


	Total Traffic for the Analyzed Period	Daily Average	Busiest Day of the Week	Busiest Month of the Year	Distribution %	
					In = West	Out = East
Pedestrians	16,331	123	Sunday	September 15: 6,598	52%	48%
Cyclists	4,502	34	Sunday	September 15: 1,907	48%	52%

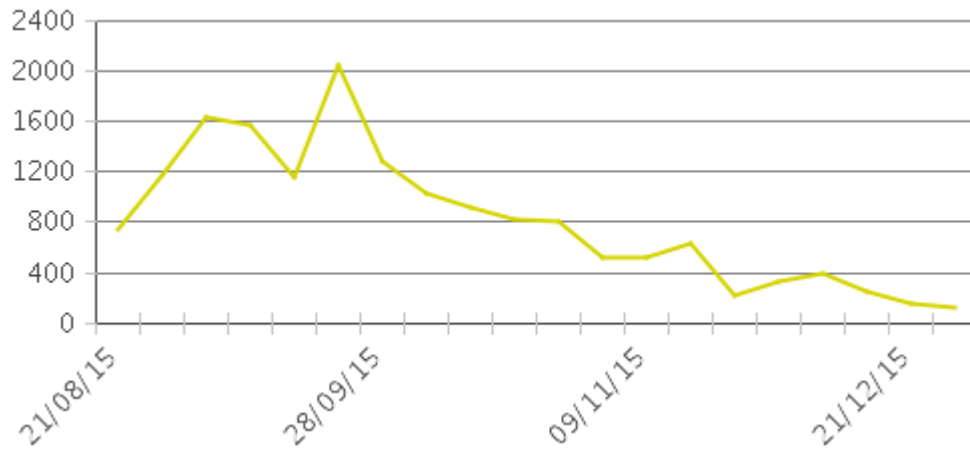




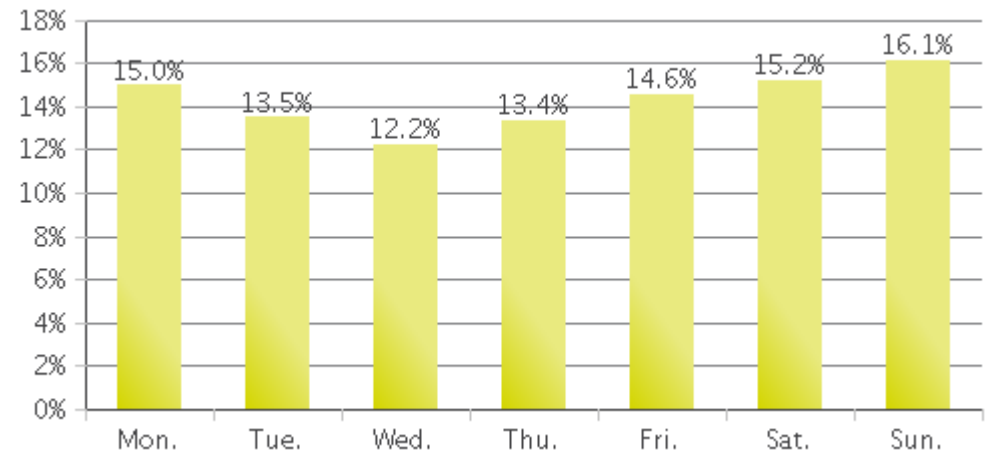
Kuna - Indian Creek Pathway
Period Analyzed: Friday, August 21, 2015 to Thursday, December 31, 2015



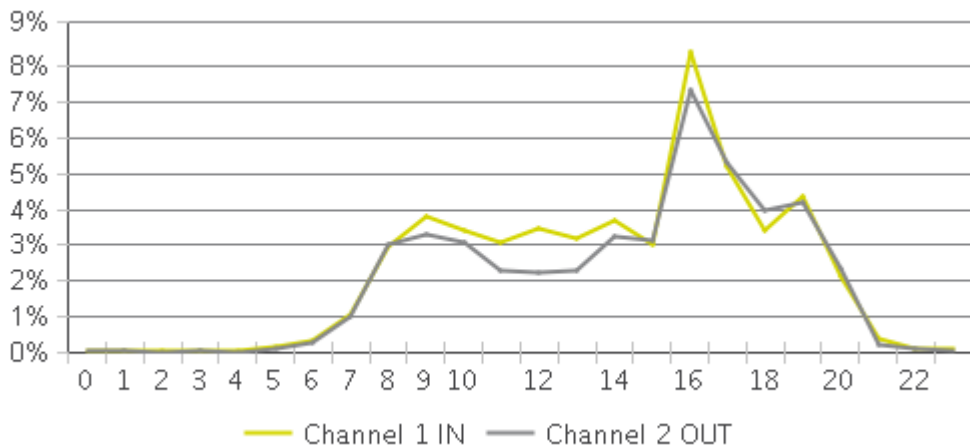
Weekly Traffic



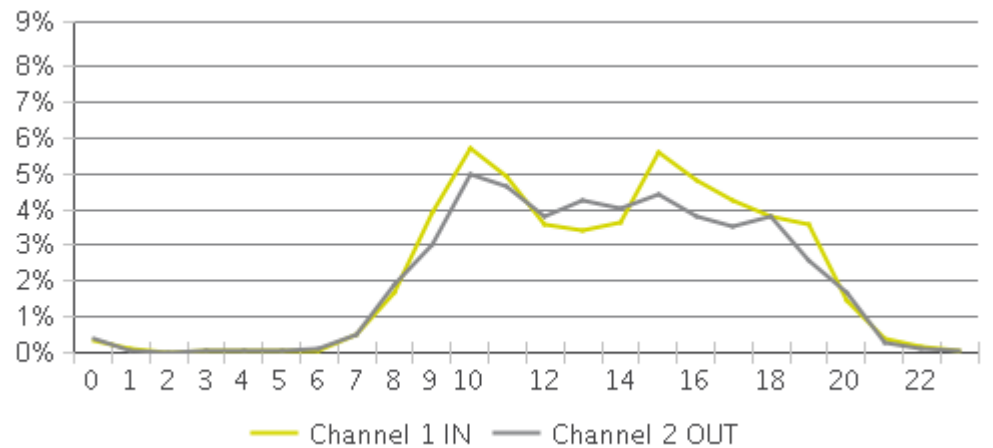
Weekly Profile



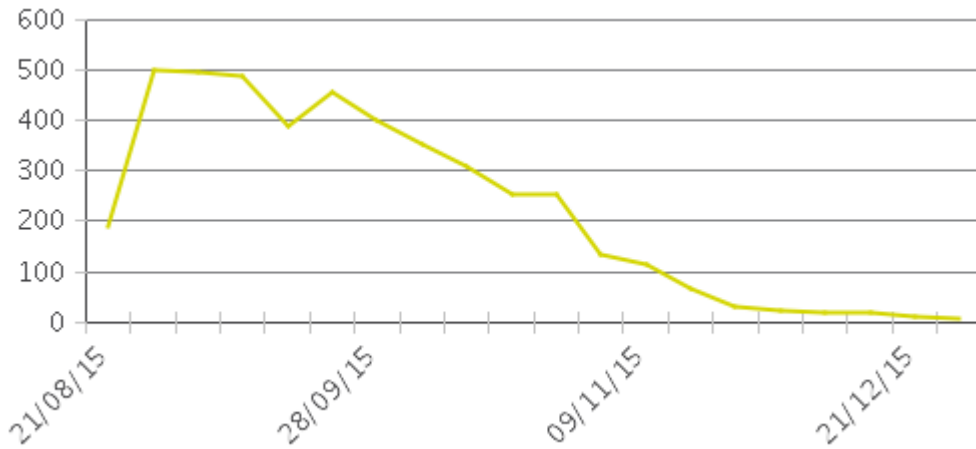
Hourly Profile during Weekdays



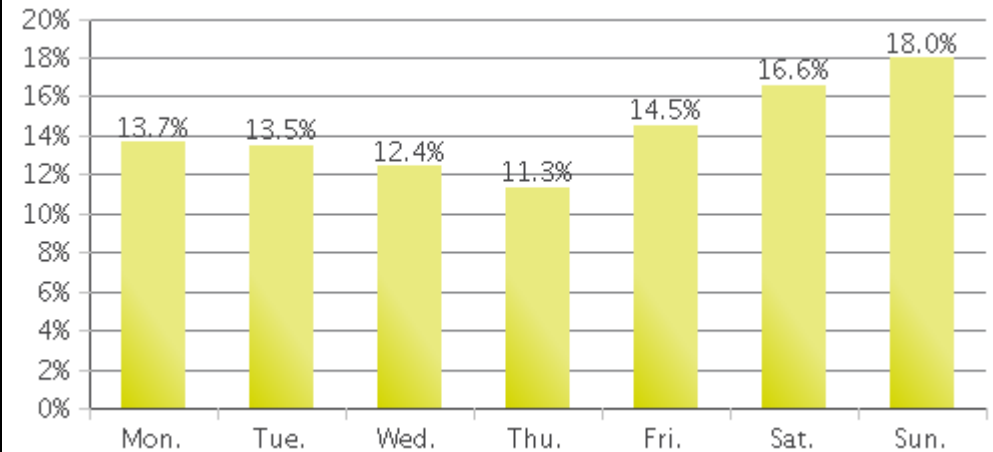
Hourly Profile during the Weekend



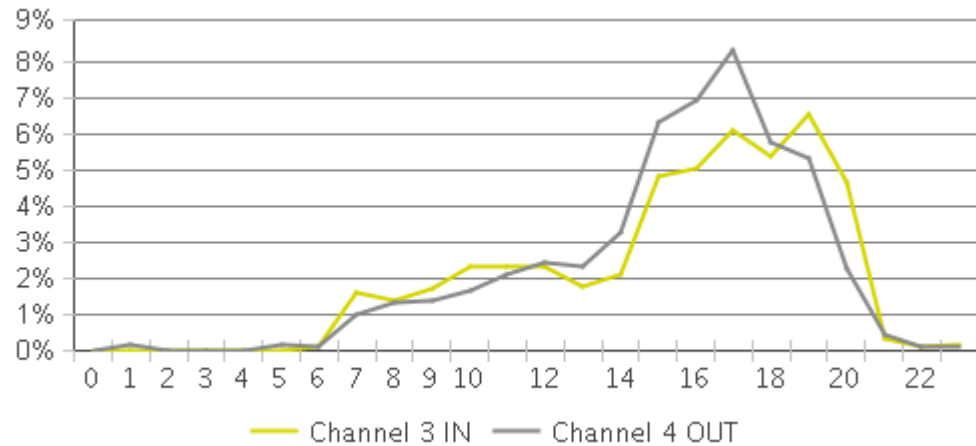
Weekly Traffic



Weekly Profile



Hourly Profile during Weekdays



Hourly Profile during the Weekend

