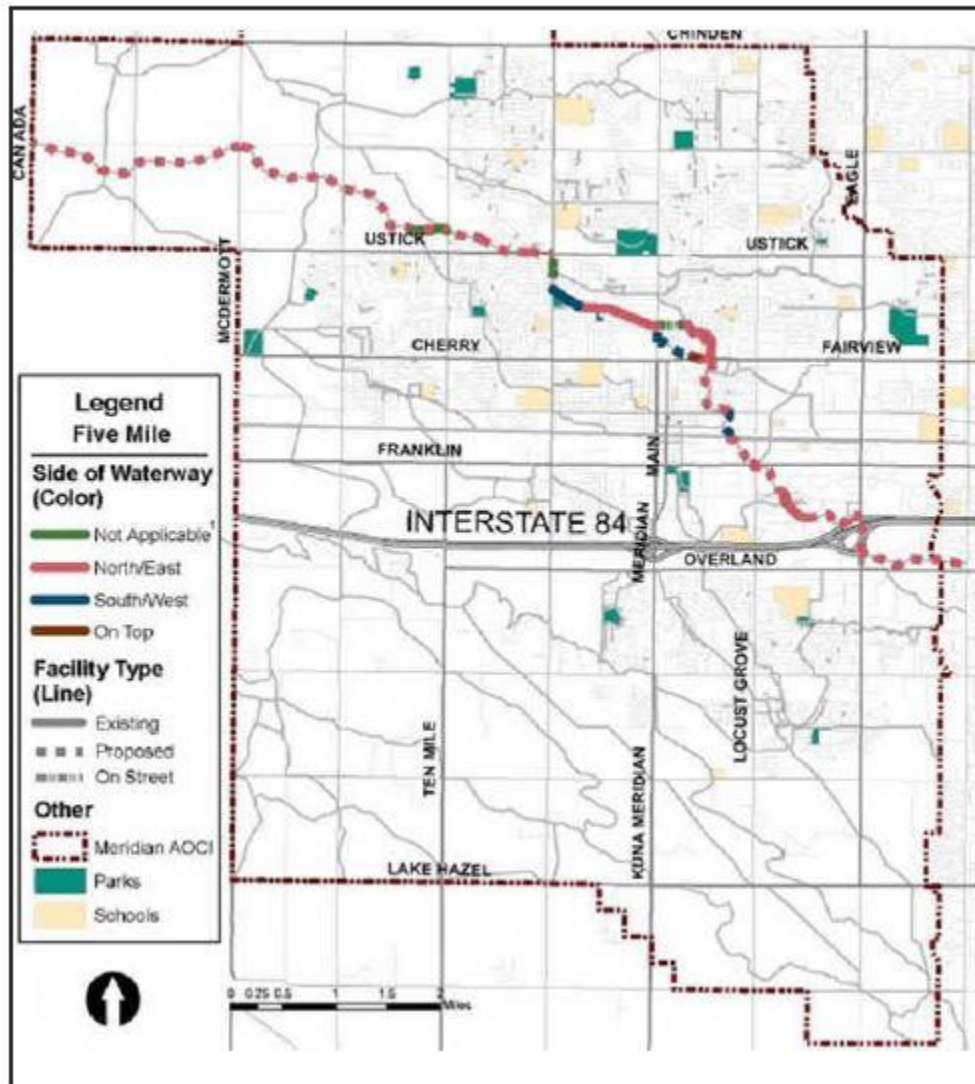


# Five Mile Creek Pathway Segment D

Ten Mile Road  
to Black Cat



# Overview -5 Mile Creek Pathway



Once fully constructed, the Five Mile Creek Pathway will provide over 11 miles of continuous pathway with connections to downtown Meridian, Tully Park, 8th Street Park, several schools and numerous neighborhoods within Meridian.

Source: City of Meridian [Pathways Master Plan](#)

# Detail - Segment D





# Key Issues:

## 1. Pathway alignment



## 2. Ten Mile Road Crossing



# Background

## Five Mile Creek Pathway Project Development Report

Prepared for



Prepared by

### Parametrix

7761 W Riverside Drive, Suite 201  
Boise, ID 83714-5044  
T. 208.898.0012 F. 1.855.542.6353  
[www.parametrix.com](http://www.parametrix.com)

## COMPASS

Comprehensive study  
completed in May, 2017

## Proposed

- Preferred pathway alignment
- Preferred crossing scenario at Ten Mile Road



# Pathway Alignment Options

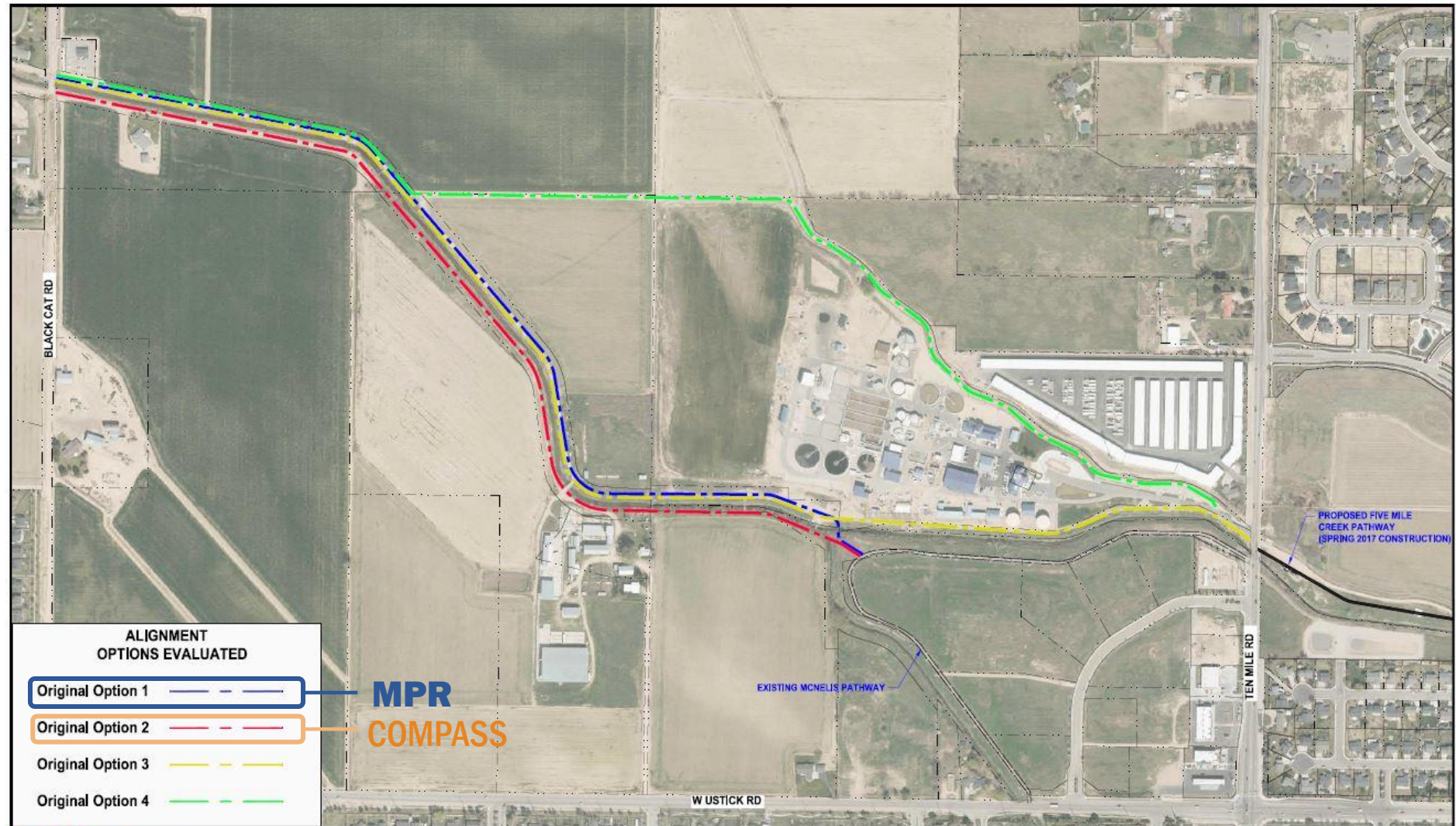
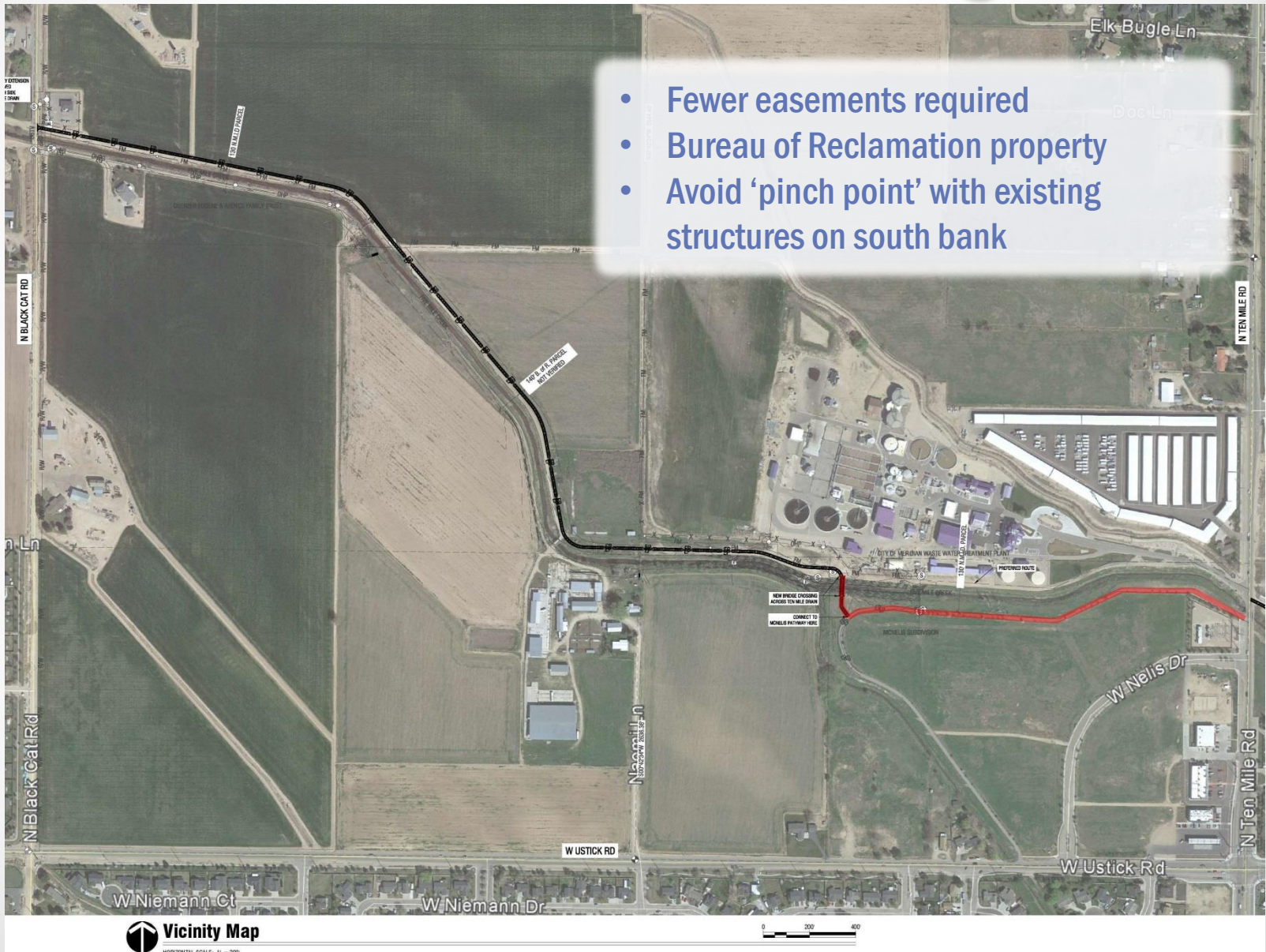


Figure 3  
Pathway Alignment Options  
FIVE MILE CREEK PATHWAY



# Preferred Alignment

- Fewer easements required
- Bureau of Reclamation property
- Avoid 'pinch point' with existing structures on south bank



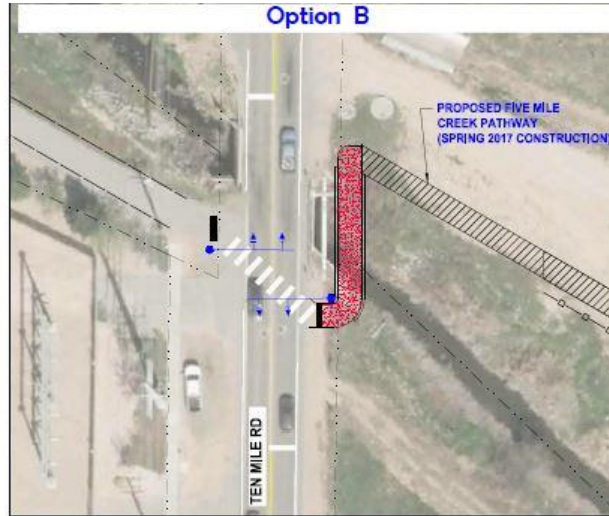


# Ten Mile Road Crossing Options

Option A



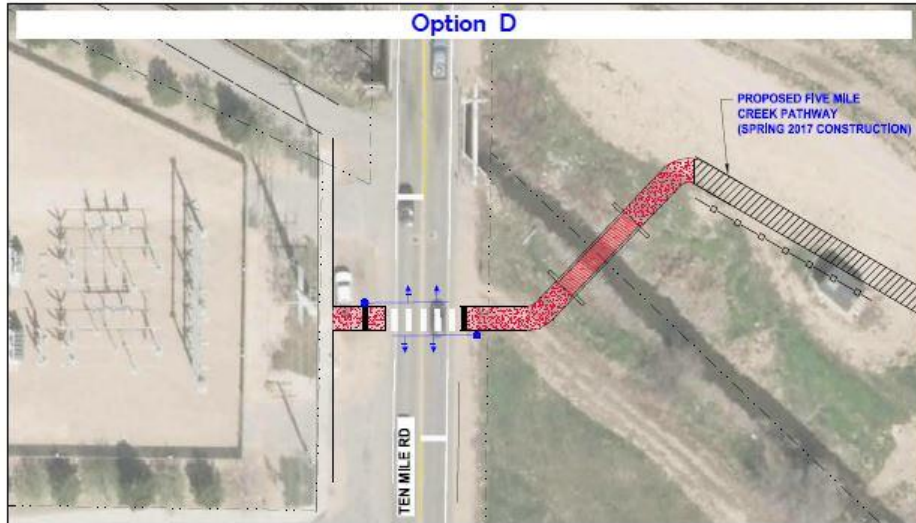
Option B



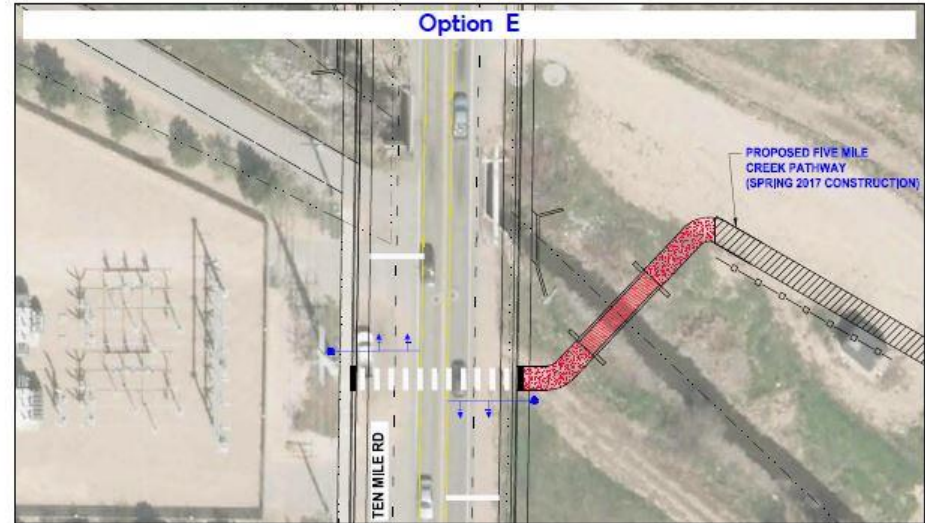
Option C



Option D



Option E





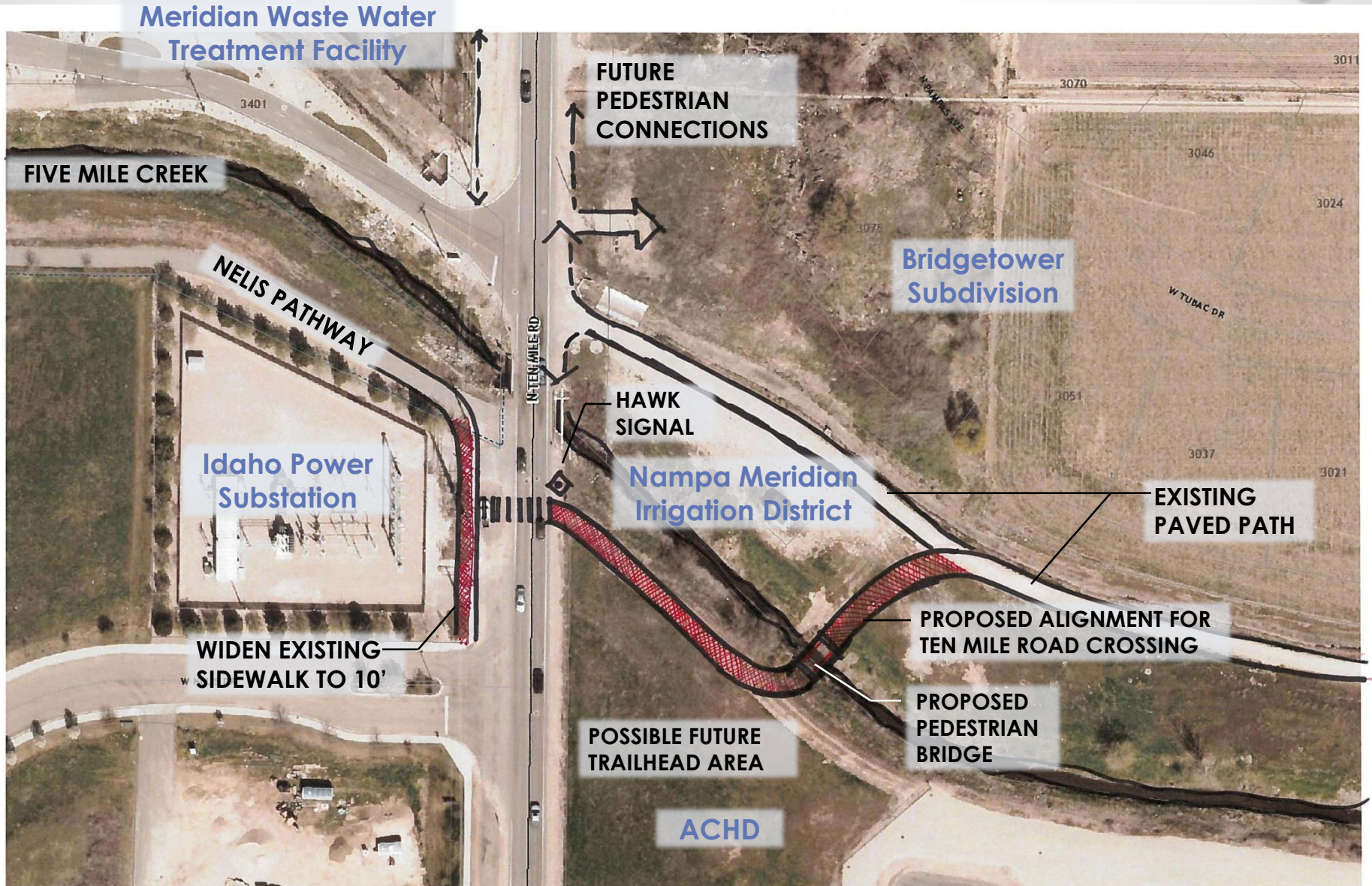
# Ten Mile Road Crossing

**EXISTING CONDITIONS**





# Ten Mile Road Crossing



Meridian Waste Water Treatment Facility

FIVE MILE CREEK

NELIS PATHWAY

Idaho Power Substation

WIDEN EXISTING SIDEWALK TO 10'

FUTURE PEDESTRIAN CONNECTIONS

HAWK SIGNAL

Nampa Meridian Irrigation District

POSSIBLE FUTURE TRAILHEAD AREA

ACHD

Bridgetower Subdivision

EXISTING PAVED PATH

PROPOSED ALIGNMENT FOR TEN MILE ROAD CROSSING

PROPOSED PEDESTRIAN BRIDGE