



COMPASS
COMMUNITY PLANNING ASSOCIATION
of Southwest Idaho

Working together to plan for the future

2016 Development Monitoring Report

March 2017

Report No. 05-2017

2016 Development Monitoring Report For Ada and Canyon Counties

List of Tables

Table 1: Total New Construction Permits	4
Table 2: New Residential Units by City Limits	4
Table 3: Total New Residential Units by City Limits as a Percentage of Regional Total	5
Table 4: New Non-Residential Permits Issued by City Limits.....	6
Table 5: New Non-Residential Permits Issued by City Limits as a Percentage of Regional Total	7
Table 6: New Residential Units by Type by City Limits, Ada County	12
Table 7: New Residential Units by Type by City Limits, Canyon County	13
Table 8: New Residential Units by Type by Area of Impact, Ada County	14
Table 9: New Residential Units by Type by Area of Impact, Canyon County	15
Table 10: New Single-Family Residential Units by Type by Demographic Area, Ada County...	16
Table 11: New Multi-Family Residential Units by Type by Demographic Area, Ada County	17
Table 12: New Manufactured/Mobile Home Residential Units by Type by Demographic, Ada County	18
Table 13: New Single-Family Residential Units by Type by Demographic Area, Canyon County.....	19
Table 14: New Multi-Family Residential Units by Type by Demographic Area, Canyon County	20
Table 15: New Manufactured/Mobile Home Residential Units by Type by Demographic Area, Canyon County	21

List of Figures

Figure 1: Total New Construction Permits	3
Figure 2: Map of New Building Permits by Demographic Area, Ada County	8
Figure 3: Map of New Building Permits in Areas of Impact, Ada County	9
Figure 4: Map of New Building Permits by Demographic Area, Canyon County	10
Figure 5: Map of New Building Permits in Areas of Impact, Canyon County	11

Introduction

The *2016 Development Monitoring Report* provides an overview of development trends within Ada and Canyon Counties, Idaho. The Community Planning Association of Southwest Idaho (COMPASS) has compiled similar reports for Ada County since 1980 and for Canyon County since 1999.

The primary sources of data for this report are building permits collected from land use agencies within Ada and Canyon Counties. In this report, building permit data are organized according to the following geographies:

City limits: the official jurisdictional and taxing boundaries of the cities. City limit boundaries tend to expand year after year as city councils approve property annexations. Building permits in this report reflect the city limit boundaries at the time of reporting.

Areas of impact: an specific, agreed-upon area, outside of a city's legal boundaries for future annexation and expansion.

Demographic areas: collections of Transportation Analysis Zones (TAZ) that roughly follow city regions. A TAZ is a special area delineated by state and/or local transportation officials for tabulating traffic-related data. Although city limit boundaries are continuously expanding, demographic areas and TAZ boundaries are static for about 10 years and therefore provide a good geographic area by which to analyze growth trends within a constant boundary over a range of time.

The *2016 Development Monitoring Report*, previous years' reports, and other development related data are available on the COMPASS website at:
<http://www.compassidaho.org/prodserv/gtsm-devmonitoring.htm>

The Development Monitoring Report is used for tracking growth, inputs to the travel demand model, and for anticipating for future development.

Custom data analysis for more specific areas is available upon request.

Note: negative numbers represent residential unit demolitions.

Any questions or concerns regarding the report may be directed to Carl Miller at 475-2239, or info@compassidaho.org.

Figure 1: Total New Construction Permits

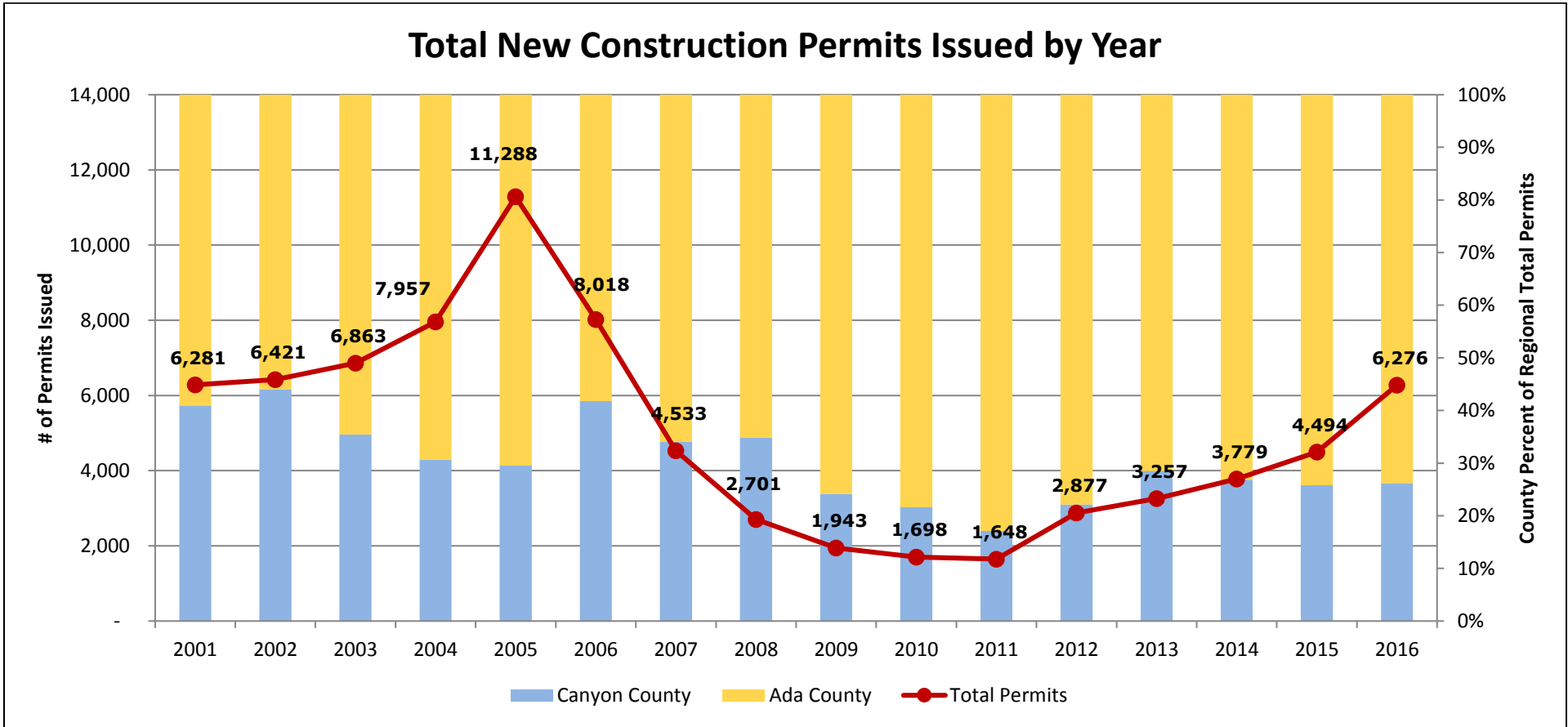


Table 1: Total New Construction Permits

	2001	2002	2003	2004	2005	2006	2007	2008	2009	2010	2011	2012	2013	2014	2015	2016
Ada County	3,709	3,593	4,432	5,515	7,953	4,668	2,987	1,760	1,473	1,331	1,366	2,240	2,329	2,764	3,335	4,632
Canyon County	2,572	2,828	2,431	2,442	3,335	3,350	1,546	941	470	367	282	637	928	1,015	1,159	1,644
Ada County %	59%	56%	65%	69%	70%	58%	66%	65%	76%	78%	83%	78%	72%	73%	74%	74%
Canyon County %	41%	44%	35%	31%	30%	42%	34%	35%	24%	22%	17%	22%	28%	27%	26%	26%
Total Permits	6,281	6,421	6,863	7,957	11,288	8,018	4,533	2,701	1,943	1,698	1,648	2,877	3,257	3,779	4,494	6,276

Table 2: New Residential Units by City Limits¹

City	2001	2002	2003	2004	2005	2006	2007	2008	2009	2010	2011	2012	2013	2014	2015	2016
Boise	1,823	1,209	1,120	813	1,185	877	1,088	196	237	345	573	776	717	2,024	1,380	1,450
Caldwell	554	703	652	615	999	1,182	919	404	254	175	64	211	302	291	348	505
Eagle	361	267	421	483	530	258	76	83	31	105	140	225	310	572	465	493
Garden City	103	196	88	69	70	53	113	38	3	6	1	26	41	51	38	171
Greenleaf	4	0	0	6	3	0	3	0	0	1	0	0	0	0	0	0
Kuna	321	410	232	227	563	297	359	230	236	92	56	103	137	115	223	326
Melba	20	4	6	0	3	1	3	2	1	0	0	0	1	0	0	0
Meridian	921	950	1,765	2,552	3,314	1,689	849	782	627	506	521	1,041	1,295	1,372	1,471	1,662
Middleton	42	129	99	104	137	159	79	83	28	28	20	77	148	131	114	111
Nampa	1,384	1,623	1,287	1,445	1,383	1,333	362	196	82	134	220	417	403	386	416	887
Notus	7	6	3	12	8	9	16	0	0	0	0	0	0	0	0	0
Parma	8	6	14	11	11	11	15	7	7	2	3	-1	6	2	3	1
Star	43	46	102	143	548	300	124	26	29	38	49	143	231	200	208	245
Wilder	0	1	4	3	20	27	11	2	1	0	0	0	1	0	12	17
Unincorporated Ada	932	875	1,036	1,188	1,617	1,209	594	384	256	162	180	199	208	322	363	466
Unincorporated Canyon	500	430	428	420	648	561	280	160	87	49	57	74	159	191	223	249
Ada County Subtotal	4,504	3,953	4,764	5,475	7,827	4,683	3,204	1,739	1,419	1,254	1,521	2,513	2,939	4,656	4,148	4,813
Canyon County Subtotal	2,519	2,902	2,493	2,616	3,212	3,283	1,687	854	460	389	363	778	1,020	1,001	1,116	1,770
Total New Residential Units	7,023	6,855	7,257	8,091	11,039	7,966	4,891	2,593	1,879	1,643	1,884	3,291	3,959	5,657	5,264	6,583
Percent Multi & Manufactured	24%	16%	17%	15%	8%	15%	32%	17%	12%	9%	26%	24%	20%	44%	23%	28%

¹ Negative numbers represent residential unit demolitions.

Table 3: Total New Residential Units by City Limits as a Percentage of Regional Total

City	2001	2002	2003	2004	2005	2006	2007	2008	2009	2010	2011	2012	2013	2014	2015	2016
Boise	26.0%	17.6%	15.4%	10.0%	10.7%	11.0%	22.2%	7.6%	12.6%	21.0%	30.4%	23.6%	18.1%	35.8%	26.2%	22.0%
Caldwell	7.9%	10.3%	9.0%	7.6%	9.0%	14.8%	18.8%	15.6%	13.5%	10.7%	3.4%	6.4%	7.6%	5.1%	6.6%	7.7%
Eagle	5.1%	3.9%	5.8%	6.0%	4.8%	3.2%	1.6%	3.2%	1.6%	6.4%	7.4%	6.8%	7.8%	10.1%	8.8%	7.5%
Garden City	1.5%	2.9%	1.2%	0.9%	0.6%	0.7%	2.3%	1.5%	0.2%	0.4%	0.1%	0.8%	1.0%	0.9%	0.7%	2.6%
Greenleaf	0.1%	0.0%	0.0%	0.1%	0.0%	0.0%	0.1%	0.0%	0.0%	0.1%	0.0%	0.0%	0.0%	0.0%	0.0%	0.0%
Kuna	4.6%	6.0%	3.2%	2.8%	5.1%	3.7%	7.3%	8.9%	12.6%	5.6%	3.0%	3.1%	3.5%	2.0%	4.2%	5.0%
Melba	0.3%	0.1%	0.1%	0.0%	0.0%	0.0%	0.1%	0.1%	0.1%	0.0%	0.0%	0.0%	0.0%	0.0%	0.0%	0.0%
Meridian	13.1%	13.9%	24.3%	31.5%	30.0%	21.2%	17.4%	30.2%	33.4%	30.8%	27.7%	31.6%	32.7%	24.3%	27.9%	25.2%
Middleton	0.6%	1.9%	1.4%	1.3%	1.2%	2.0%	1.6%	3.2%	1.5%	1.7%	1.1%	2.3%	3.7%	2.3%	2.2%	1.7%
Nampa	19.7%	23.7%	17.7%	17.9%	12.5%	16.7%	7.4%	7.6%	4.4%	8.2%	11.7%	12.7%	10.2%	6.8%	7.9%	13.5%
Notus	0.1%	0.1%	0.0%	0.1%	0.1%	0.1%	0.3%	0.0%	0.0%	0.0%	0.0%	0.0%	0.0%	0.0%	0.0%	0.0%
Parma	0.1%	0.1%	0.2%	0.1%	0.1%	0.1%	0.3%	0.3%	0.4%	0.1%	0.2%	0.0%	0.2%	0.0%	0.1%	0.0%
Star	0.6%	0.7%	1.4%	1.8%	5.0%	3.8%	2.5%	1.0%	1.5%	2.3%	2.6%	4.3%	5.8%	3.5%	4.0%	3.7%
Wilder	0.0%	0.0%	0.1%	0.0%	0.2%	0.3%	0.2%	0.1%	0.1%	0.0%	0.0%	0.0%	0.0%	0.0%	0.2%	0.3%
Unincorporated Ada	13.3%	12.8%	14.3%	14.7%	14.6%	15.2%	12.1%	14.8%	13.6%	9.9%	9.6%	6.0%	5.3%	5.7%	6.9%	7.1%
Unincorporated Canyon	7.1%	6.3%	5.9%	5.2%	5.9%	7.0%	5.7%	6.2%	4.6%	3.0%	3.0%	2.2%	4.0%	3.4%	4.2%	3.8%
Ada County Subtotal	64.1%	57.7%	65.6%	67.7%	70.9%	58.8%	65.5%	67.1%	75.5%	76.3%	80.7%	76.4%	74.2%	82.3%	78.8%	73.1%
Canyon County Subtotal	35.9%	42.3%	34.4%	32.3%	29.1%	41.2%	34.5%	32.9%	24.5%	23.7%	19.3%	23.6%	25.8%	17.7%	21.2%	26.9%
Total New Residential Units	100.0%	100.0%	100.0%	100.0%	100.0%	100.0%	100.0%	100.0%	100.0%	100.0%	100.0%	100.0%	100.0%	100.0%	100.0%	100.0%

Table 4: New Non-Residential Permits Issued by City Limits

City	2001	2002	2003	2004	2005	2006	2007	2008	2009	2010	2011	2012	2013	2014	2015	2016
Boise	132	69	120	99	106	132	102	71	38	23	30	32	70	73	40	84
Caldwell	26	15	24	32	32	35	51	52	15	8	5	10	13	20	24	25
Eagle	20	10	19	28	28	35	27	15	1	3	5	8	2	6	11	21
Garden City	7	8	21	12	14	26	18	8	7	5	4	2	10	5	11	9
Greenleaf	0	0	0	0	0	1	0	0	0	1	0	0	0	0	0	0
Kuna	5	4	1	13	6	13	18	11	0	4	0	1	1	5	2	14
Melba	0	2	0	1	0	0	0	1	0	3	0	0	0	0	1	0
Meridian	31	31	55	70	139	113	102	52	23	31	24	84	42	76	59	51
Middleton	0	3	1	5	5	6	3	2	0	0	0	0	3	4	1	1
Nampa	55	42	43	42	97	97	79	49	21	14	13	12	17	37	23	50
Notus	0	1	0	0	0	0	0	0	0	0	0	0	1	0	0	0
Parma	3	3	1	1	3	2	1	1	0	2	1	4	0	0	2	0
Star	0	1	3	7	9	12	4	1	2	0	0	1	0	0	2	4
Wilder	0	0	0	0	1	1	1	0	1	0	3	0	0	0	0	1
Unincorporated Ada	2	3	2	23	30	15	19	4	6	0	3	0	2	7	63	17
Unincorporated Canyon	44	37	2	28	28	13	13	8	9	7	3	11	8	17	9	11
Ada County Subtotal	197	126	221	252	332	346	290	162	77	66	66	128	127	172	188	200
Canyon County Subtotal	128	103	71	109	166	155	148	113	46	35	25	37	42	78	60	88
Total New Non-Residential Permits	325	229	292	361	498	501	438	275	123	101	91	165	169	250	248	288

Table 5: New Non-Residential Permits Issued by City Limits as a Percentage of Regional Total²

City	2001	2002	2003	2004	2005	2006	2007	2008	2009	2010	2011	2012	2013	2014	2015	2016
Boise	40.6%	30.1%	41.1%	27.4%	21.3%	26.3%	23.3%	25.8%	30.9%	22.8%	33.0%	19.4%	41.4%	29.2%	16.1%	29.2%
Caldwell	8.0%	6.6%	8.2%	8.9%	6.4%	7.0%	11.6%	18.9%	12.2%	7.9%	5.5%	6.1%	7.7%	8.0%	9.7%	8.7%
Eagle	6.2%	4.4%	6.5%	7.8%	5.6%	7.0%	6.2%	5.5%	0.8%	3.0%	5.5%	4.8%	1.2%	2.4%	4.4%	7.3%
Garden City	2.2%	3.5%	7.2%	3.3%	2.8%	5.2%	4.1%	2.9%	5.7%	5.0%	4.4%	1.2%	5.9%	2.0%	4.4%	3.1%
Greenleaf	0.0%	0.0%	0.0%	0.0%	0.0%	0.2%	0.0%	0.0%	0.0%	1.0%	0.0%	0.0%	0.0%	0.0%	0.0%	0.0%
Kuna	1.5%	1.7%	0.3%	3.6%	1.2%	2.6%	4.1%	4.0%	0.0%	4.0%	0.0%	0.6%	0.6%	2.0%	0.8%	4.9%
Melba	0.0%	0.9%	0.0%	0.3%	0.0%	0.0%	0.0%	0.4%	0.0%	3.0%	0.0%	0.0%	0.0%	0.0%	0.4%	0.0%
Meridian	9.5%	13.5%	18.8%	19.4%	27.9%	22.6%	23.3%	18.9%	18.7%	30.7%	26.4%	50.9%	24.9%	30.4%	23.8%	17.7%
Middleton	0.0%	1.3%	0.3%	1.4%	1.0%	1.2%	0.7%	0.7%	0.0%	0.0%	0.0%	0.0%	1.8%	1.6%	0.4%	0.3%
Nampa	16.9%	18.3%	14.7%	11.6%	19.5%	19.4%	18.0%	17.8%	17.1%	13.9%	14.3%	7.3%	10.1%	14.8%	9.3%	17.4%
Notus	0.0%	0.4%	0.0%	0.0%	0.0%	0.0%	0.0%	0.0%	0.0%	0.0%	0.0%	0.0%	0.6%	0.0%	0.0%	0.0%
Parma	0.9%	1.3%	0.3%	0.3%	0.6%	0.4%	0.2%	0.4%	0.0%	2.0%	1.1%	2.4%	0.0%	0.0%	0.8%	0.0%
Star	0.0%	0.4%	1.0%	1.9%	1.8%	2.4%	0.9%	0.4%	1.6%	0.0%	0.0%	0.6%	0.0%	0.0%	0.8%	1.4%
Wilder	0.0%	0.0%	0.0%	0.0%	0.2%	0.2%	0.2%	0.0%	0.8%	0.0%	3.3%	0.0%	0.0%	0.0%	0.0%	0.3%
Unincorporated Ada	0.6%	1.3%	0.7%	6.4%	6.0%	3.0%	4.3%	1.5%	4.9%	0.0%	3.3%	0.0%	1.2%	2.8%	25.4%	5.9%
Unincorporated Canyon	13.5%	16.2%	0.7%	7.8%	5.6%	2.6%	3.0%	2.9%	7.3%	6.9%	3.3%	6.7%	4.7%	6.8%	3.6%	3.8%
Ada County Subtotal	60.6%	55.0%	75.7%	69.8%	66.7%	69.1%	66.2%	58.9%	62.6%	65.3%	72.5%	77.6%	75.1%	68.8%	75.8%	69.4%
Canyon County Subtotal	39.4%	45.0%	24.3%	30.2%	33.3%	30.9%	33.8%	41.1%	37.4%	34.7%	27.5%	22.4%	24.9%	31.2%	24.2%	30.6%
Total New Non-Residential Permits	100.0%	100.0%	100.0%	100.0%	100.0%	100.0%	100.0%	100.0%	100.0%	100.0%	100.0%	100.0%	100.0%	100.0%	100.0%	100.0%

² Some non-residential permits include square footage and value; please contact COMPASS for the raw data

Figure 2: Map of New Building Permits by Demographic Area, Ada County

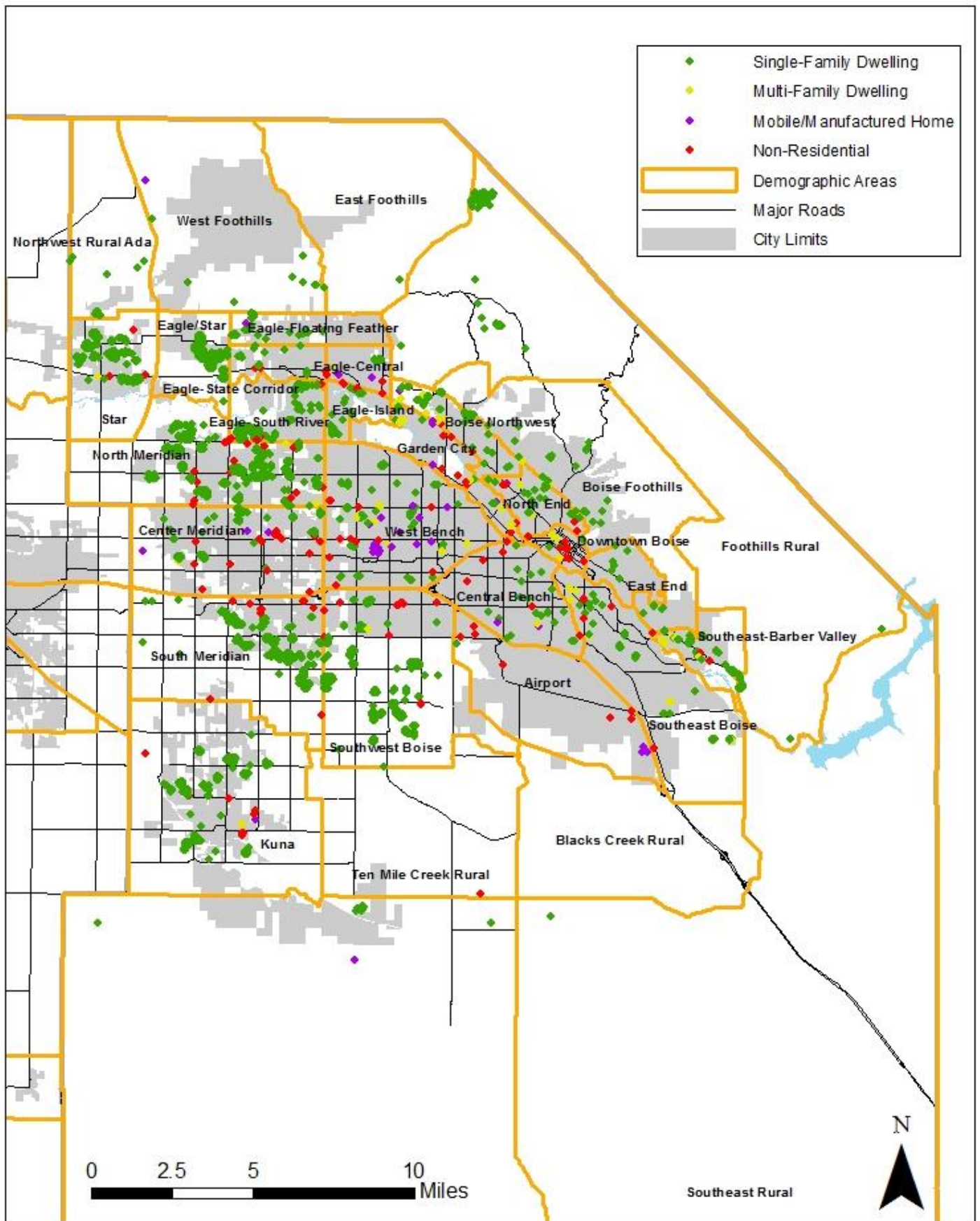


Figure 3: Map of New Building Permits by Area of Impact, Ada County

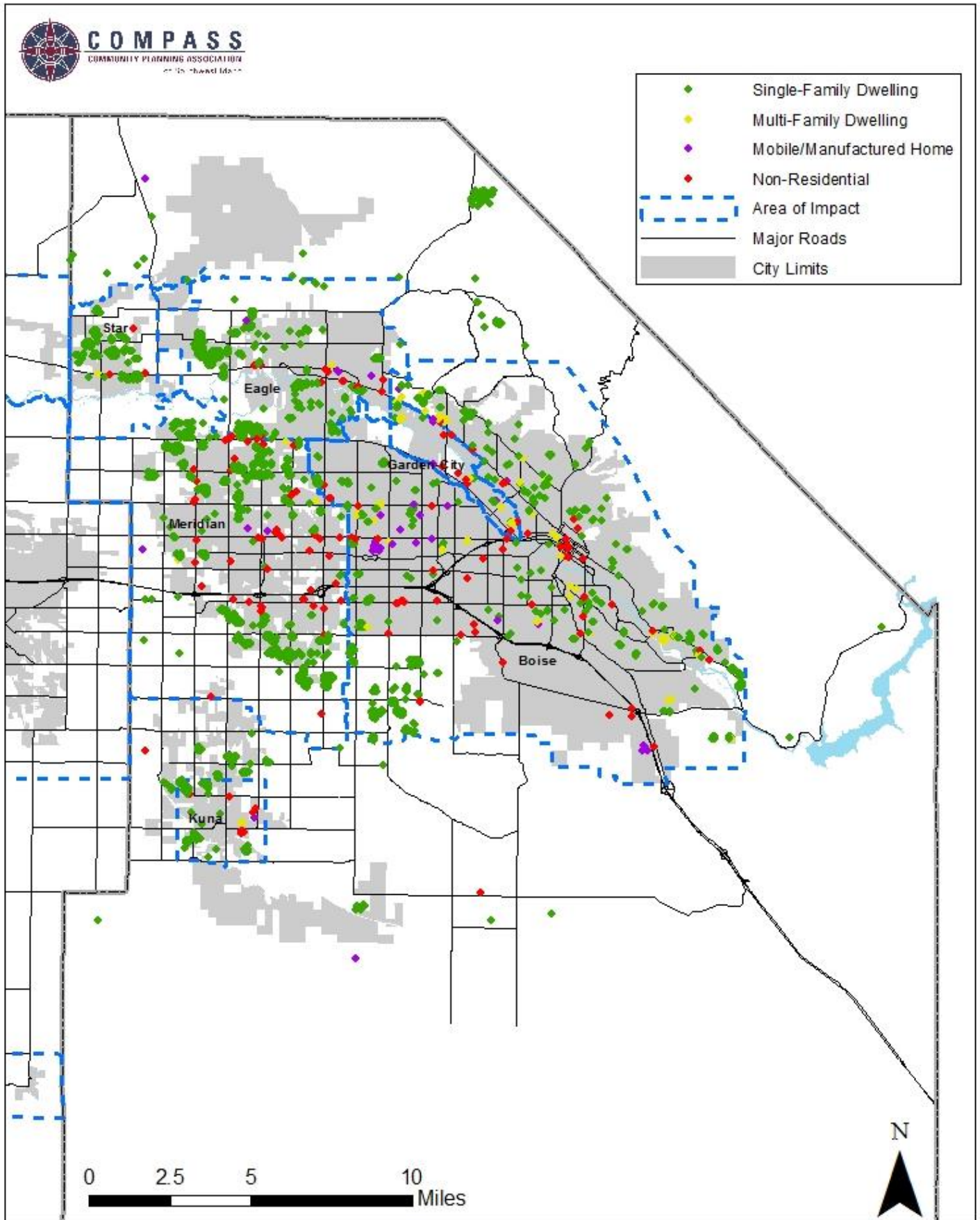


Figure 4: Map of New Building Permits by Demographic Area, Canyon County

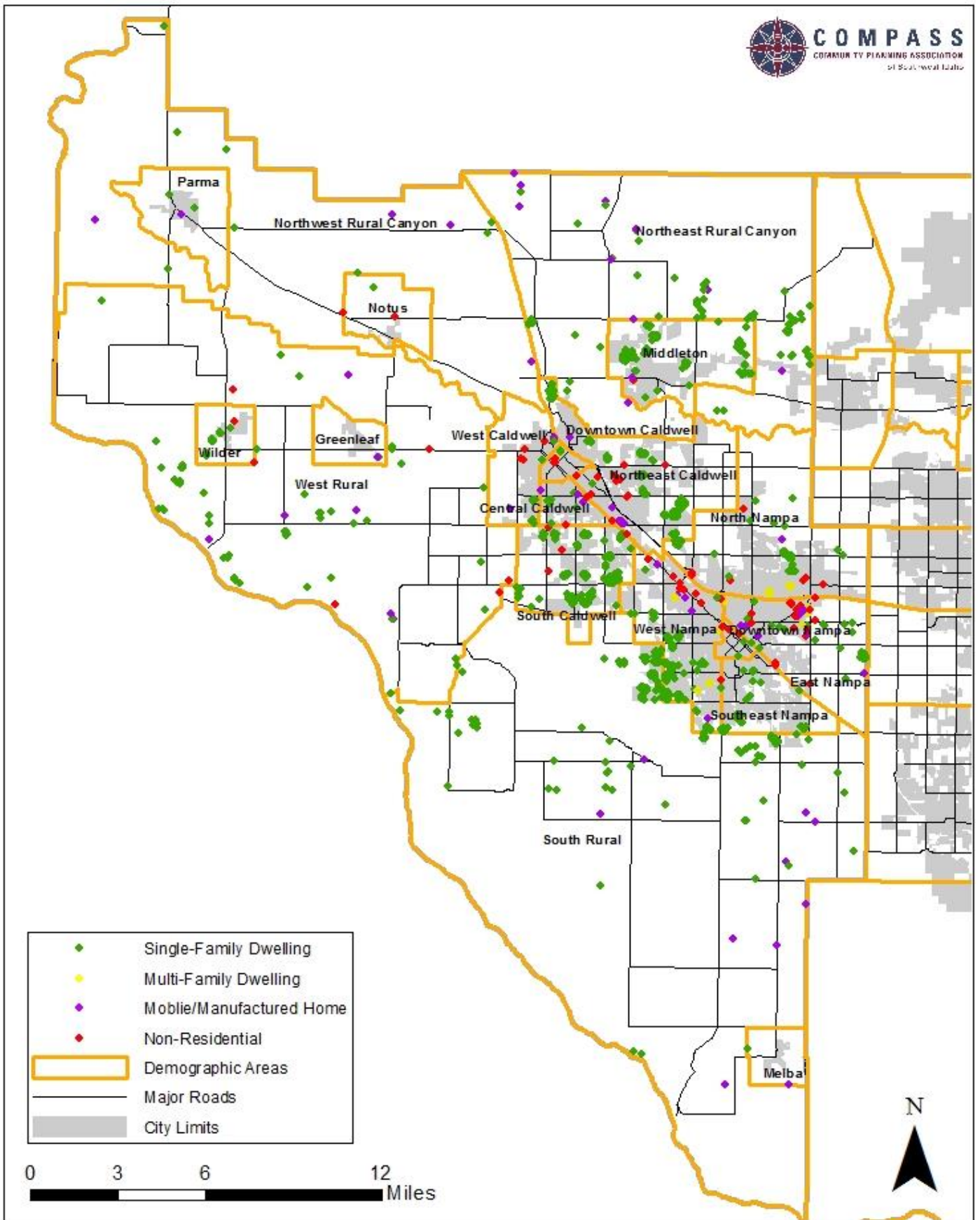


Figure 5: Map of New Building Permits by Area of Impact, Canyon County

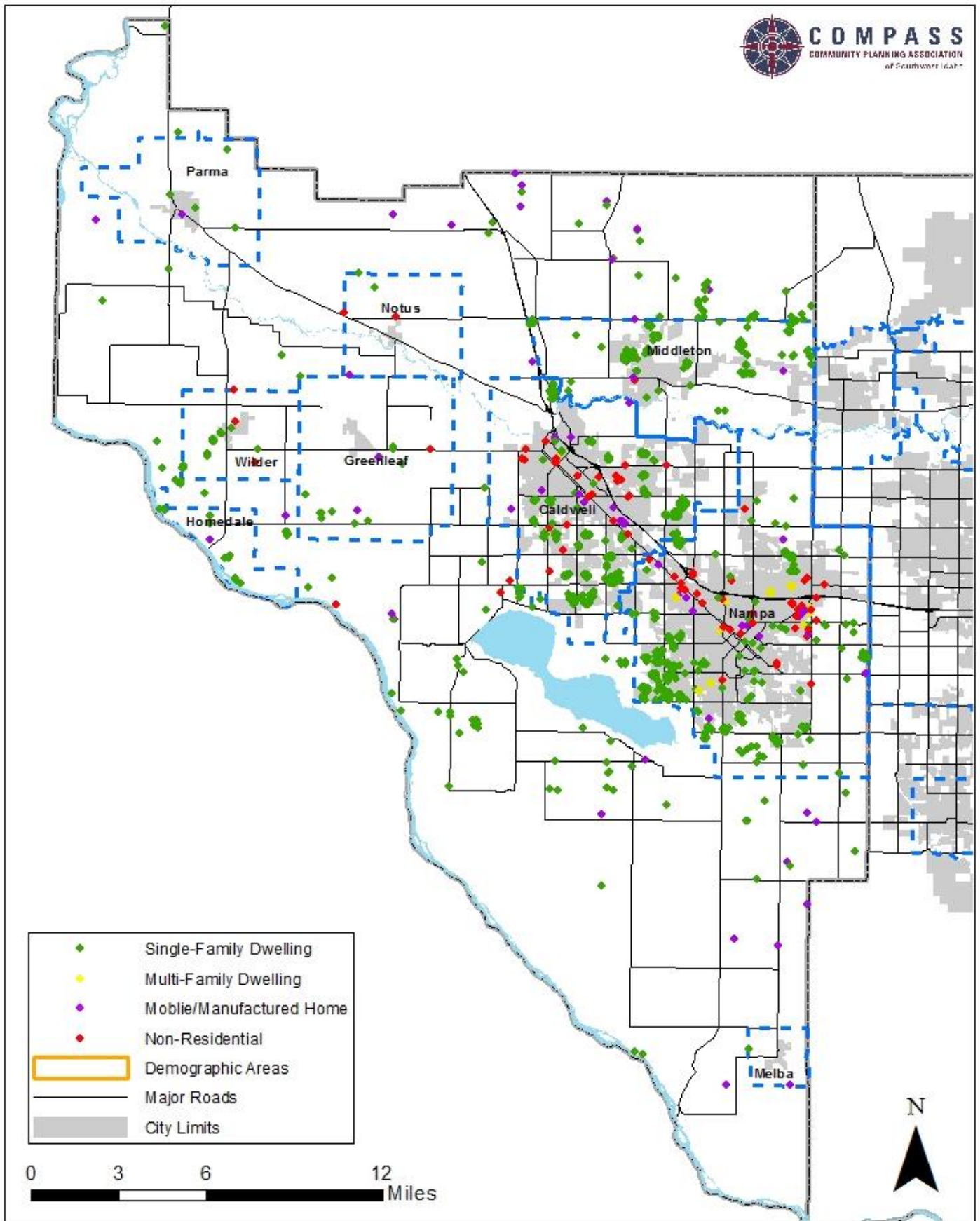


Table 6: New Residential Units by Type by City Limits, Ada County³

Single-Family Residential Units																
CITY	2001	2002	2003	2004	2005	2006	2007	2008	2009	2010	2011	2012	2013	2014	2015	2016
Boise	785	712	678	562	795	415	256	122	145	323	327	483	493	396	619	470
Eagle	349	265	421	479	505	228	75	81	30	103	139	224	289	395	446	489
Garden City	87	102	65	38	58	32	63	17	4	9	8	27	38	33	31	28
Kuna	286	390	229	224	522	296	359	229	236	92	56	103	136	114	221	314
Meridian	812	919	1,432	2,228	3,161	1,557	801	571	625	502	464	769	815	758	1,050	1,389
Star	42	41	100	140	547	268	122	24	29	38	50	143	228	199	208	209
Ada County Unincorporated	861	829	981	1,162	1,573	1,054	544	364	207	150	172	200	207	311	349	456
Ada County Total	3,222	3,258	3,906	4,833	7,161	3,850	2,220	1,408	1,276	1,217	1,216	1,949	2,206	2,206	2,924	3,355

Multi-Family Residential Units																
CITY	2001	2002	2003	2004	2005	2006	2007	2008	2009	2010	2011	2012	2013	2014	2015	2016
Boise	1,036	491	433	235	377	452	830	76	92	24	232	293	189	1,573	758	901
Eagle	8	1	0	0	24	28	0	2	0	0	0	1	17	96	16	4
Garden City	2	92	21	29	12	15	50	22	0	0	2	0	0	2	0	143
Kuna	32	20	0	2	30	0	0	0	0	0	0	0	0	0	0	0
Meridian	102	29	330	323	148	112	40	210	0	0	56	272	472	604	414	260
Star	0	0	0	2	0	32	2	2	0	0	0	0	2	0	0	37
Ada County Unincorporated	0	2	0	0	17	128	42	20	46	10	0	0	0	4	6	0
Ada County Total	1,180	635	784	591	608	767	964	332	138	34	290	566	680	2,279	1,194	1,345

Manufactured / Mobile Residential Units																
CITY	2001	2002	2003	2004	2005	2006	2007	2008	2009	2010	2011	2012	2013	2014	2015	2016
Boise	2	6	9	16	13	10	2	-2	0	-2	14	0	17	27	20	38
Eagle	4	1	0	4	1	2	1	0	1	2	1	0	2	82	1	3
Garden City	14	2	2	2	0	6	0	-1	-1	-3	-9	-1	-4	2	-7	-6
Kuna	3	0	3	1	11	1	0	1	0	0	0	0	0	2	1	0
Meridian	7	2	3	1	5	20	8	1	2	4	1	0	5	7	2	2
Star	1	5	2	1	1	0	1	0	0	0	0	0	0	0	0	0
Ada County Unincorporated	71	44	55	26	27	27	8	0	3	2	8	-1	0	-1	1	6
Ada County Total	102	60	74	51	58	66	20	-1	5	3	15	-2	20	119	18	43

³ Negative numbers represent residential unit demolitions.

Table 7: New Residential Units by Type by City Limits, Canyon County

Single-Family Residential Units																
CITY	2001	2002	2003	2004	2005	2006	2007	2008	2009	2010	2011	2012	2013	2014	2015	2016
Caldwell	499	587	593	583	939	1,152	582	392	238	102	37	195	290	268	336	479
Greenleaf	3	0	0	6	1	0	3	0	0	1	0	0	0	0	0	0
Melba	18	3	6	0	2	1	3	2	0	0	0	0	0	0	0	0
Middleton	40	129	99	69	130	159	45	83	28	28	20	77	148	131	113	111
Nampa	1,202	1,425	1,051	1,038	1,283	1,107	236	160	60	103	67	201	297	293	380	419
Notus	7	6	3	12	8	9	13	0	0	0	0	0	0	0	0	0
Parma	6	4	7	11	9	7	8	4	4	1	1	-2	4	2	3	0
Star	0	0	0	0	0	0	-1	0	0	0	-1	0	-2	0	0	0
Wilder	0	1	2	2	19	27	11	2	1	0	0	0	1	0	11	17
Unincorporated Canyon County	374	345	360	348	575	481	213	109	51	40	56	72	146	179	198	245
Canyon County Total	2,149	2,500	2,121	2,069	2,966	2,943	1,113	752	382	275	180	543	884	873	1,041	1,271

Multi-Family Residential Units																
CITY	2001	2002	2003	2004	2005	2006	2007	2008	2009	2010	2011	2012	2013	2014	2015	2016
Caldwell	2	78	33	10	23	0	304	10	2	49	0	16	0	12	0	4
Greenleaf	0	0	0	0	0	0	0	0	0	0	0	0	0	0	0	0
Melba	0	0	0	0	0	0	0	0	0	0	0	0	0	0	0	0
Middleton	0	0	0	34	2	0	34	0	0	0	0	0	0	0	0	0
Nampa	131	140	221	378	80	216	101	26	2	16	147	216	100	73	26	456
Notus	0	0	0	0	0	0	0	0	0	0	0	0	0	0	0	0
Parma	0	0	0	0	0	0	2	0	0	0	0	1	0	0	0	0
Star	0	0	0	0	0	0	0	0	0	0	0	0	0	0	0	0
Wilder	0	0	0	0	0	0	0	0	0	0	0	0	0	0	0	0
Unincorporated Canyon County	0	0	0	0	0	0	0	0	0	0	0	2	0	0	0	0
Canyon County Total	133	218	254	422	105	216	441	36	4	65	147	235	100	85	26	460

Manufactured / Mobile Residential Units																
CITY	2001	2002	2003	2004	2005	2006	2007	2008	2009	2010	2011	2012	2013	2014	2015	2016
Caldwell	53	38	26	22	37	30	33	2	14	24	27	0	22	20	1	16
Greenleaf	1	0	0	0	2	0	0	0	0	0	0	0	0	0	0	0
Melba	2	1	0	0	1	0	0	0	1	0	0	0	1	0	0	0
Middleton	2	0	0	1	5	0	0	0	0	0	0	0	0	0	0	0
Nampa	51	58	15	29	20	10	25	10	20	15	6	0	5	8	1	15
Notus	0	0	0	0	0	0	3	0	0	0	0	0	0	0	0	0
Parma	2	2	7	0	2	4	5	3	3	1	2	0	2	0	0	1
Star	0	0	0	0	0	0	0	0	0	0	0	0	0	0	0	0
Wilder	0	0	2	1	1	0	0	0	0	0	0	0	0	0	1	0
Unincorporated Canyon County	126	85	68	72	73	80	67	51	36	9	1	0	26	33	18	31
Canyon County Total	237	184	118	125	141	124	133	66	74	49	36	0	56	61	21	63

Table 8: New Residential Units by Type by Area of Impact, Ada County⁴

Single-Family Residential Units																
Area of Impact	2001	2002	2003	2004	2005	2006	2007	2008	2009	2010	2011	2012	2013	2014	2015	2016
Boise	1,346	1,230	1,272	1,451	1,961	1,254	673	444	304	444	441	641	632	616	842	470
Eagle	386	294	483	522	525	239	79	83	32	106	138	228	290	398	460	489
Garden City	87	102	65	38	58	31	63	17	4	9	8	27	38	33	29	28
Kuna	289	300	227	197	377	189	141	37	120	43	25	81	90	92	137	314
Meridian	946	1,071	1,591	2,268	3,207	1,590	826	576	630	507	469	777	827	768	1,051	1,389
Star	45	47	105	150	578	270	123	24	29	38	53	144	230	200	209	209
Star - Eagle	0	0	0	0	0	0	0	0	0	0	0	0	0	0	0	0
Outside Area of Impact	123	214	163	207	455	277	315	227	157	70	82	51	99	99	196	456
Ada County Total	3,222	3,258	3,906	4,833	7,161	3,850	2,220	1,408	1,276	1,217	1,216	1,949	2,206	2,206	2,924	3,355

Multi-Family Residential Units																
Area of Impact	2001	2002	2003	2004	2005	2006	2007	2008	2009	2010	2011	2012	2013	2014	2015	2016
Boise	1,036	493	433	235	383	580	866	96	138	34	232	293	217	1,577	764	901
Eagle	8	1	0	0	26	28	0	2	0	0	0	1	17	96	16	4
Garden City	2	92	21	29	12	15	50	22	0	0	2	0	0	2	0	143
Kuna	32	20	0	2	30	0	0	0	0	0	0	0	0	0	0	12
Meridian	102	29	330	323	149	112	40	210	0	0	56	272	472	604	414	260
Star	0	0	0	2	0	32	2	2	0	0	0	0	2	0	0	37
Star - Eagle	0	0	0	0	0	0	0	0	0	0	0	0	0	0	0	0
Outside Area of Impact	0	0	0	0	8	0	6	0	0	0	0	0	0	0	0	0
Ada County Total	1,180	635	784	591	608	767	964	332	138	34	290	566	708	2,279	1,194	1,357

Manufactured / Mobile Residential Units																
Area of Impact	2001	2002	2003	2004	2005	2006	2007	2008	2009	2010	2011	2012	2013	2014	2015	2016
Boise	46	33	32	24	33	27	6	-3	1	-1	18	-1	16	26	20	38
Eagle	6	3	4	11	1	5	1	0	2	2	1	0	3	82	1	3
Garden City	14	2	2	2	0	6	0	0	-1	-3	-9	-1	-4	2	-7	-6
Kuna	5	2	3	1	11	1	0	1	1	0	0	0	0	2	1	0
Meridian	17	9	20	5	8	21	9	1	2	4	4	0	5	7	2	2
Star	1	5	3	1	1	1	1	0	1	0	0	0	1	0	0	0
Star - Eagle	0	0	0	0	0	0	0	0	0	0	0	0	0	0	0	0
Outside Area of Impact	13	6	10	7	4	5	3	0	-1	1	1	0	-1	0	1	6
Ada County Total	102	60	74	51	58	66	20	-1	5	3	15	-2	20	119	18	43

⁴ Negative numbers represent residential unit demolitions.

Table 9: New Residential Units by Type by Area of Impact, Canyon County

Single-Family Residential Units																
Area of Impact	2001	2002	2003	2004	2005	2006	2007	2008	2009	2010	2011	2012	2013	2014	2015	2016
Caldwell	522	611	626	613	971	1,197	551	386	235	100	35	185	277	224	347	479
Greenleaf	3	0	1	6	3	0	3	6	0	3	1	1	4	5	7	0
Homedale	0	3	1	1	1	6	0	3	2	0	0	0	6	5	4	0
Melba	20	5	6	2	12	11	3	3	0	3	0	1	0	0	0	0
Middleton	96	184	159	116	241	246	70	97	36	35	28	87	165	165	138	111
Nampa	1,323	1,531	1,146	1,137	1,387	1,154	278	196	71	109	89	217	326	327	382	419
Notus	7	6	3	12	8	9	13	1	2	1	0	0	0	1	2	0
Parma	11	4	7	11	10	8	8	5	5	1	2	0	5	4	4	0
Star	0	0	0	0	0	0	0	0	0	0	0	0	0	0	0	0
Wilder	0	1	3	2	21	28	11	1	2	0	1	1	2	1	11	17
Outside Area of Impact	167	155	169	169	312	284	176	54	29	23	24	49	101	141	146	245
Canyon County Total	2,149	2,500	2,121	2,069	2,966	2,943	1,113	752	382	275	180	541	886	873	1,041	1,271

Multi-Family Residential Units																
Area of Impact	2001	2002	2003	2004	2005	2006	2007	2008	2009	2010	2011	2012	2013	2014	2015	2016
Caldwell	2	78	33	10	23	0	304	10	2	49	0	16	0	12	0	4
Greenleaf	0	0	0	0	0	0	0	0	0	0	0	0	0	0	0	0
Homedale	0	0	0	0	0	0	0	0	0	0	0	0	0	0	0	0
Melba	0	0	0	0	0	0	0	0	0	0	0	0	0	0	0	0
Middleton	0	0	0	34	2	0	34	0	0	0	0	0	0	0	0	0
Nampa	131	140	221	378	80	216	101	26	2	16	147	217	100	73	26	456
Notus	0	0	0	0	0	0	0	0	0	0	0	0	0	0	0	0
Parma	0	0	0	0	0	0	2	0	0	0	0	1	0	0	0	0
Star	0	0	0	0	0	0	0	0	0	0	0	0	0	0	0	0
Wilder	0	0	0	0	0	0	0	0	0	0	0	0	0	0	0	0
Outside Area of Impact	0	0	0	0	0	0	0	0	0	0	0	1	0	0	0	0
Canyon County Total	133	218	254	422	105	216	441	36	4	65	147	235	100	85	26	460

Manufactured / Mobile Residential Units																
Area of Impact	2001	2002	2003	2004	2005	2006	2007	2008	2009	2010	2011	2012	2013	2014	2015	2016
Caldwell	68	41	27	25	38	35	35	9	15	24	27	0	26	22	3	16
Greenleaf	1	0	1	0	2	0	0	0	4	0	0	0	0	3	0	0
Homedale	1	2	0	0	1	0	0	1	1	0	0	0	0	1	1	0
Melba	2	1	0	0	1	0	0	0	1	1	0	0	2	0	1	0
Middleton	8	12	9	8	8	7	5	5	0	0	0	0	2	5	4	0
Nampa	69	67	27	37	33	20	33	20	28	16	6	0	6	14	2	15
Notus	0	0	0	0	0	0	3	0	0	0	0	0	0	0	0	0
Parma	2	3	8	1	2	5	5	4	3	1	2	0	4	0	0	1
Star	0	0	0	0	0	0	0	0	0	0	0	0	0	0	0	0
Wilder	1	1	2	1	1	0	0	2	1	0	0	0	0	1	1	0
Outside Area of Impact	85	57	44	53	55	57	52	25	21	7	1	0	16	15	9	31
Canyon County Total	237	184	118	125	141	124	133	66	74	49	36	0	56	61	21	63

Table 10: New Single-Family Residential Units by Type by Demographic Area, Ada County

Single-Family Residential Units																
Demographic Area	2001	2002	2003	2004	2005	2006	2007	2008	2009	2010	2011	2012	2013	2014	2015	2016
Aiport	3	2	16	0	9	-1	-2	-4	-2	0	0	0	0	-2	-2	-2
Central Bench	39	32	65	33	55	19	40	16	15	18	6	9	28	12	31	15
Downtown Boise	1	-1	-12	-16	-4	-3	-9	-1	0	-3	-4	-3	-3	-5	-6	0
East End	13	33	35	22	15	12	7	8	3	2	2	3	8	2	13	4
Boise Foothills	42	48	61	87	59	55	32	13	6	13	25	27	32	54	41	33
North End	24	20	33	20	33	13	7	9	6	15	6	6	21	23	13	4
Boise Northwest	107	56	112	59	61	53	59	23	21	46	33	52	38	50	61	98
Southeast Boise	159	161	138	167	214	116	88	17	23	45	64	112	117	101	87	47
Southeast-Barber Valley	122	128	45	4	2	4	-1	5	5	55	100	151	167	89	188	116
Southwest Boise	476	557	554	944	1,294	947	414	337	176	166	149	198	162	254	327	485
West Bench	344	299	259	217	343	244	132	62	78	138	88	134	111	82	131	101
Boise Area Subtotal	1,330	1,335	1,306	1,537	2,081	1,459	767	485	331	495	469	689	681	660	884	901
Center Meridian	614	566	519	406	490	250	126	69	118	38	50	89	91	66	95	179
North Meridian	156	243	833	1,452	2,003	822	431	313	386	328	292	456	483	446	550	717
South Meridian	196	158	206	327	591	311	175	152	99	90	99	184	204	200	336	377
Meridian Area Subtotal	966	967	1,558	2,185	3,084	1,383	732	534	603	456	441	729	778	712	981	1,273
Eagle/Star	4	2	3	-1	7	6	-1	29	0	3	25	54	87	126	131	192
Eagle-Central	105	57	71	63	158	49	8	17	1	4	0	6	3	3	2	18
Eagle-Floating Feather	113	109	139	119	71	33	19	7	5	17	30	47	63	53	58	50
Eagle-Island	15	15	27	32	54	7	12	3	12	36	39	45	67	53	53	37
Eagle-South River	73	68	120	164	123	93	27	12	8	30	29	42	34	140	184	173
Eagle-State Corridor	49	26	88	133	107	48	12	14	4	16	16	33	32	22	24	19
Eagle Area Subtotal	359	277	448	510	520	236	77	82	30	106	139	227	286	397	452	489
Garden City	87	102	65	38	58	32	62	17	4	9	8	27	38	33	29	28
Kuna	319	414	264	251	564	309	376	228	241	93	58	104	137	116	230	315
Star	43	44	105	143	564	268	118	26	29	38	52	144	221	178	187	191
Other City Subtotal	449	560	434	432	1,186	609	556	271	274	140	118	275	396	327	446	534
Blacks Creek Rural	0	0	2	0	0	1	0	0	0	0	0	0	0	0	0	0
East Foothills	2	2	5	3	3	2	0	0	1	0	0	1	1	0	4	1
Foothills Rural	63	70	90	115	209	110	56	28	27	16	45	26	40	71	113	118
Northwest Rural	28	25	22	37	44	10	10	2	5	2	1	0	12	24	29	22
Southeast Rural	1	3	2	0	1	0	0	0	0	0	0	0	0	0	0	1
Southwest Rural	4	5	7	2	19	33	13	4	3	1	1	1	2	6	6	7
West Foothills	4	6	23	10	11	4	5	1	1	1	2	0	6	3	5	8
Ten Mile Creek Rural	16	8	9	2	3	3	4	1	1	0	0	1	4	0	3	1
Rural Area Subtotal	118	119	160	169	290	163	88	36	38	20	49	29	65	104	160	158
Total	3,222	3,258	3,906	4,833	7,161	3,850	2,220	1,408	1,276	1,217	1,216	1,949	2,206	2,200	2,923	3,355

Table 11: New Multi-Family Residential Units by Type by Demographic Area, Ada County

Demographic Area	Multi-Family Residential Units															
	2001	2002	2003	2004	2005	2006	2007	2008	2009	2010	2011	2012	2013	2014	2015	2016
Aiport	0	0	0	12	0	0	0	-1	0	0	0	0	0	0	0	0
Central Bench	174	128	99	69	28	35	216	42	6	5	0	26	26	544	0	6
Downtown Boise	130	149	181	1	1	84	154	6	23	0	56	0	28	2	54	232
East End	4	1	40	0	3	22	28	0	9	0	0	0	8	0	28	0
Boise Foothills	0	-1	0	1	40	-8	0	0	0	0	0	0	0	0	0	12
North End	29	26	16	12	11	11	10	3	1	0	0	-2	2	0	0	2
Boise Northwest	2	15	55	11	84	20	2	7	0	1	0	0	0	2	126	239
Southeast Boise	207	18	14	47	43	28	82	6	15	0	0	3	13	302	299	221
Southeast-Barber Valley	0	0	0	0	0	0	0	0	0	0	0	0	0	333	0	74
Southwest Boise	0	0	2	0	38	187	36	20	46	10	0	202	84	122	6	4
West Bench	490	159	36	86	201	201	338	13	38	18	176	192	160	352	251	111
Boise Area Subtotal	1,036	495	443	239	449	580	866	96	138	34	232	421	321	1,657	764	901
Center Meridian	102	27	320	123	70	112	8	40	0	0	8	144	34	168	132	138
North Meridian	0	0	0	4	12	0	4	170	0	0	0	0	36	96	92	122
South Meridian	0	0	0	192	1	0	28	0	0	0	48	0	298	260	190	0
Meridian Area Subtotal	102	27	320	319	83	112	40	210	0	0	56	144	368	524	414	260
Eagle/Star	0	0	0	0	0	0	0	0	0	0	0	0	0	0	0	0
Eagle-Central	8	0	1	0	24	28	0	2	0	0	0	1	0	0	0	4
Eagle-Floating Feather	0	0	0	0	0	0	0	0	0	0	0	0	0	0	0	0
Eagle-Island	0	0	0	0	0	0	0	0	0	0	0	0	0	0	0	0
Eagle-South River	0	0	-1	0	1	0	0	0	0	0	0	0	0	0	0	0
Eagle-State Corridor	0	1	0	0	0	0	0	0	0	0	0	0	17	96	16	0
Eagle Area Subtotal	8	1	0	0	25	28	0	2	0	0	0	1	17	96	16	4
Garden City	2	92	21	29	12	15	50	22	0	0	2	0	0	2	0	143
Kuna	32	20	0	2	30	0	0	0	0	0	0	0	0	0	0	12
Star	0	0	0	2	0	32	2	2	0	0	0	0	2	0	0	37
Other City Subtotal	34	112	21	33	42	47	52	24	0	0	2	0	2	2	0	192
Blacks Creek Rural	0	0	0	0	0	0	0	0	0	0	0	0	0	0	0	0
East Foothills	0	0	0	0	0	0	0	0	0	0	0	0	0	0	0	0
Foothills Rural	0	0	0	0	5	0	6	0	0	0	0	0	0	0	0	0
Northwest Rural	0	0	0	0	0	0	0	0	0	0	0	0	0	0	0	0
Southeast Rural	0	0	0	0	0	0	0	0	0	0	0	0	0	0	0	0
Southwest Rural	0	0	0	0	3	0	0	0	0	0	0	0	0	0	0	0
West Foothills	0	0	0	0	1	0	0	0	0	0	0	0	0	0	0	0
Ten Mile Creek Rural	0	0	0	0	0	0	0	0	0	0	0	0	0	0	0	0
Rural Area Subtotal	0	0	0	0	9	0	6	0	0	0	0	0	0	0	0	0
Total	1,180	635	784	591	608	767	964	332	138	34	290	566	708	2,279	1,194	1,357

Table 12: New Manufactured/Mobile Home Residential Units by Type by Demographic Area, Ada County⁵

Demographic Area	Manufactured / Mobile Residential Units															
	2001	2002	2003	2004	2005	2006	2007	2008	2009	2010	2011	2012	2013	2014	2015	2016
Aiport	7	3	1	3	0	9	0	0	2	0	3	0	0	2	3	5
Central Bench	0	2	5	7	2	7	7	-1	0	0	5	0	2	4	0	2
Downtown Boise	0	0	0	0	0	0	0	0	0	0	0	0	0	0	0	0
East End	0	0	0	0	0	0	0	0	0	0	0	0	0	0	0	0
Boise Foothills	0	1	0	0	1	0	0	0	0	0	0	0	0	0	0	0
North End	0	0	0	1	0	0	-4	0	0	0	0	0	0	6	0	1
Boise Northwest	3	4	3	2	0	2	1	-1	0	0	0	0	0	0	2	1
Southeast Boise	26	7	1	3	1	2	0	0	-2	0	0	-1	0	0	0	0
Southeast-Barber Valley	4	8	1	1	0	3	4	0	1	0	1	0	0	1	0	0
Southwest Boise	5	4	31	3	22	2	2	0	0	0	0	0	0	0	0	0
West Bench	1	5	3	4	8	1	-3	-1	0	-1	8	0	14	13	15	29
Boise Area Subtotal	46	34	45	24	34	26	7	-3	1	-1	17	-1	16	26	20	38
Center Meridian	7	2	2	2	5	20	8	1	2	2	2	0	5	6	2	3
North Meridian	2	4	2	2	0	0	0	0	0	2	0	0	0	0	0	0
South Meridian	8	2	1	1	2	1	0	0	0	0	2	0	0	1	0	0
Meridian Area Subtotal	17	8	5	5	7	21	8	1	2	4	4	0	5	7	2	3
Eagle/Star	2	0	0	0	0	1	0	0	0	0	0	0	0	0	0	0
Eagle-Central	4	2	3	5	1	2	1	0	2	2	2	0	3	2	1	3
Eagle-Floating Feather	0	0	-2	0	0	0	0	0	0	0	0	0	0	0	0	1
Eagle-Island	0	0	0	0	0	0	0	0	0	0	0	0	0	80	0	0
Eagle-South River	0	0	1	3	0	1	0	0	0	0	0	0	0	0	0	0
Eagle-State Corridor	0	0	0	0	0	0	0	0	0	0	0	0	0	0	0	0
Eagle Area Subtotal	6	2	2	8	1	4	1	0	2	2	2	0	3	82	1	4
Garden City	14	2	2	2	0	6	0	0	-1	-3	-9	-1	-4	2	-7	-6
Kuna	9	2	5	3	11	3	0	1	1	0	1	0	0	3	2	2
Star	1	5	2	1	1	0	1	0	1	0	0	0	1	0	0	0
Other City Subtotal	24	9	9	6	12	9	1	1	1	-3	-8	-1	-3	5	-5	-4
Blacks Creek Rural	0	0	0	0	0	0	0	0	0	0	0	0	0	0	0	0
East Foothills	0	1	1	1	0	0	0	0	0	0	0	0	-1	0	0	0
Foothills Rural	0	0	5	0	1	1	0	0	0	0	0	0	0	0	0	0
Northwest Rural	0	1	1	0	0	1	1	0	0	0	0	0	0	-1	0	0
Southeast Rural	6	1	1	2	0	0	2	0	0	0	0	0	0	0	0	0
Southwest Rural	2	3	2	0	3	1	0	0	-1	0	0	0	0	0	0	1
West Foothills	0	0	0	3	0	1	0	0	0	0	0	0	0	0	0	1
Ten Mile Creek Rural	1	1	3	2	0	2	0	0	0	1	0	0	0	0	0	0
Rural Area Subtotal	9	7	13	8	4	6	3	0	-1	1	0	0	-1	-1	0	2
Total	102	60	74	51	58	66	20	-1	5	3	15	-2	20	119	18	43

⁵ Negative numbers represent residential unit demolitions.

Table 13: New Single-Family Residential Units by Type by Demographic Area, Canyon County⁶

Single-Family Residential Units																
Demographic Area	2001	2002	2003	2004	2005	2006	2007	2008	2009	2010	2011	2012	2013	2014	2015	2016
Downtown Nampa	1	5	-3	-2	1	-2	-2	-1	0	-1	0	0	1	0	-2	1
East Nampa	157	422	104	48	82	21	8	10	3	5	11	8	24	18	12	14
North Nampa	207	155	202	255	204	105	19	17	11	40	24	57	53	53	63	66
Southeast Nampa	408	277	217	216	277	200	30	52	18	6	8	17	34	39	37	76
West Nampa	513	641	603	587	758	685	155	76	20	45	29	95	143	128	147	153
Nampa Area Subtotal	1,286	1,500	1,123	1,104	1,322	1,009	210	154	52	95	72	177	255	238	257	310
Central Caldwell	27	114	65	83	75	23	21	0	1	2	1	6	4	3	3	6
Downtown Caldwell	1	-3	-4	-2	-1	1	0	-2	-2	-1	0	-1	-4	-2	-3	1
Northeast Caldwell	76	181	290	272	480	541	202	172	128	61	19	104	157	112	190	191
South Caldwell	332	260	251	247	368	529	347	225	113	42	17	88	143	157	199	290
West Caldwell	93	78	42	27	75	111	28	5	1	-1	2	1	8	8	8	17
Caldwell Area Subtotal	529	630	644	627	997	1,205	598	400	241	103	39	198	308	278	397	505
Greenleaf	4	1	2	6	3	1	6	0	0	1	0	0	2	0	0	1
Melba	20	5	6	2	12	11	3	3	0	3	0	1	0	0	0	1
Middleton	59	155	124	96	179	183	55	86	30	30	26	79	148	149	121	121
Notus	7	7	4	12	8	10	13	1	2	1	0	0	0	1	0	2
Parma	12	4	7	11	10	8	7	4	5	1	2	-1	5	2	4	0
Wilder	0	1	3	2	21	28	11	1	1	0	1	2	1	1	11	19
Other City Subtotal	102	173	146	129	233	241	95	95	38	36	29	81	156	153	136	144
Northeast Rural Canyon	62	56	66	45	136	112	46	18	13	8	5	17	44	47	60	67
Northwest Rural Canyon	15	9	30	18	34	35	17	6	6	1	1	3	3	8	8	0
South Rural	116	83	76	92	150	244	103	59	24	23	25	56	99	121	151	189
West Rural	39	49	36	54	94	97	44	20	8	9	9	11	21	18	32	56
Rural Area Subtotal	232	197	208	209	414	488	210	103	51	41	40	87	167	194	251	312
Total	2,149	2,500	2,121	2,069	2,966	2,943	1,113	752	382	275	180	543	886	863	1,041	1,271

⁶ Negative numbers represent residential unit demolitions.

Table 14: New Multi-Family Residential Units by Type by Demographic Area, Canyon County

Multi-Family Residential Units																
Demographic Area	2001	2002	2003	2004	2005	2006	2007	2008	2009	2010	2011	2012	2013	2014	2015	2016
Downtown Nampa	2	0	4	4	0	0	0	0	0	2	0	0	0	2	2	4
East Nampa	0	48	30	20	9	125	17	1	2	3	3	39	0	58	0	290
North Nampa	60	16	54	0	0	0	0	24	0	8	68	57	100	16	0	96
Southeast Nampa	44	58	94	250	13	42	8	1	0	0	0	0	0	-6	24	0
West Nampa	25	18	39	104	58	49	76	0	0	3	76	120	0	3	0	66
Nampa Area Subtotal	131	140	221	378	80	216	101	26	2	16	147	216	100	73	26	456
Central Caldwell	2	26	11	2	11	0	55	0	2	0	0	8	0	8	0	2
Downtown Caldwell	0	0	0	2	0	0	0	0	0	48	0	3	0	0	0	2
Northeast Caldwell	0	0	19	0	10	0	235	8	0	1	0	5	0	0	0	0
South Caldwell	0	48	0	0	0	0	14	2	0	0	0	0	0	4	0	0
West Caldwell	0	4	3	6	2	0	0	0	0	0	0	0	0	0	0	0
Caldwell Area Subtotal	2	78	33	10	23	0	304	10	2	49	0	16	0	12	0	4
Greenleaf	0	0	0	0	0	0	0	0	0	0	0	0	0	0	0	0
Meiba	0	0	0	0	0	0	0	0	0	0	0	0	0	0	0	0
Middleton	0	0	0	34	2	0	34	0	0	0	0	0	0	0	0	0
Notus	0	0	0	0	0	0	0	0	0	0	0	0	0	0	0	0
Parma	0	0	0	0	0	0	2	0	0	0	0	1	0	0	0	0
Wilder	0	0	0	0	0	0	0	0	0	0	0	0	0	0	0	0
Other City Subtotal	0	0	0	34	2	0	36	0	0	0	0	1	0	0	0	0
Northeast Rural Canyon	0	0	0	0	0	0	0	0	0	0	0	0	0	0	0	0
Northwest Rural Canyon	0	0	0	0	0	0	0	0	0	0	0	1	0	0	0	0
South Rural	0	0	0	0	0	0	0	0	0	0	0	1	0	0	0	0
West Rural	0	0	0	0	0	0	0	0	0	0	0	0	0	0	0	0
Rural Area Subtotal	0	0	0	0	0	0	0	0	0	0	0	2	0	0	0	0
Total	133	218	254	422	105	216	441	36	4	65	147	235	100	85	26	460

Table 15: New Manufactured/Mobile Home Residential Units by Type by Demographic Area, Canyon County⁷

	Manufactured / Mobile Residential Units															
Demographic Area	2001	2002	2003	2004	2005	2006	2007	2008	2009	2010	2011	2012	2013	2014	2015	2016
Downtown Nampa	1	1	-1	0	3	0	1	0	1	0	0	0	0	1	0	0
East Nampa	40	25	5	21	15	13	21	13	11	12	5	0	1	1	1	10
North Nampa	3	17	4	3	2	2	1	2	4	0	0	0	2	4	0	1
Southeast Nampa	4	4	4	3	1	1	3	2	1	0	0	0	0	0	0	0
West Nampa	20	20	15	11	13	9	4	3	8	4	1	0	2	8	0	8
Nampa Area Subtotal	68	67	27	38	34	25	30	20	25	16	6	0	5	14	1	19
Central Caldwell	3	1	9	2	3	4	-1	0	0	1	2	0	1	0	0	3
Downtown Caldwell	2	0	0	0	3	0	0	0	0	1	1	0	4	2	0	0
Northeast Caldwell	51	27	12	20	25	20	31	6	12	22	24	0	18	14	1	9
South Caldwell	6	6	4	1	0	2	1	3	1	0	0	0	3	6	2	0
West Caldwell	3	7	1	1	3	2	3	0	2	0	0	0	0	-1	0	4
Caldwell Area Subtotal	65	41	26	24	34	28	34	9	15	24	27	0	26	21	3	16
Greenleaf	4	0	1	1	3	0	0	0	0	0	0	0	0	1	0	1
Meiba	2	1	0	0	1	0	0	0	1	1	0	0	2	0	1	0
Middleton	5	3	4	4	6	1	2	2	0	0	0	0	1	0	1	2
Notus	0	1	0	1	0	0	3	0	0	0	0	0	0	0	0	0
Parma	2	3	8	2	2	5	6	4	3	1	2	0	3	0	0	1
Wilder	1	1	2	1	1	0	0	0	0	0	0	0	0	0	1	0
Other City Subtotal	14	9	15	9	13	6	11	6	4	2	2	0	6	1	3	4
Northeast Rural Canyon	18	14	14	11	8	8	9	6	1	1	0	0	2	7	2	10
Northwest Rural Canyon	29	11	12	16	11	19	15	7	11	3	1	0	6	7	2	0
South Rural	21	17	11	10	15	12	20	13	7	1	0	0	7	4	7	9
West Rural	22	25	13	17	26	26	14	5	11	2	0	0	4	7	3	5
Rural Area Subtotal	90	67	50	54	60	65	58	31	30	7	1	0	19	25	14	24
Total	237	184	118	125	141	124	133	66	74	49	36	0	56	61	21	63

⁷ Negative numbers represent residential unit demolitions.