



**COMPASS**  
COMMUNITY PLANNING ASSOCIATION  
of Southwest Idaho

*Working together to plan for the future*

# 2020 Development Monitoring Report

March 2021

Report No. 06-2021

# 2020 Development Monitoring Report For Ada and Canyon Counties

## List of Tables

Table 1: Total New Building Permits, 2010 - 2020 .....	4
Table 2: New Residential Units by City Limits, 2010 - 2020 .....	5
Table 3: Total New Residential Units by City Limits as a Percentage of Regional Total, 2010 – 2020.....	6
Table 4: New Non-Residential Permits Issued by City Limits, 2010 - 2020 .....	7
Table 5: New Non-Residential Permits Issued by City Limits as a Percentage of Regional Total, 2010 - 2020 .....	8
Table 6: New Residential Units by Type by City Limits, Ada County, 2010 - 2020 .....	14
Table 7: New Residential Units by Type by City Limits, Canyon County, 2010 - 2020 .....	15
Table 8: New Residential Units by Type by Area of Impact, Ada County, 2010 - 2020 .....	16
Table 9: New Residential Units by Type by Area of Impact, Canyon County, 2010 - 2020 .....	17
Table 10: New Single-Family Residential Units by Demographic Area, Ada County, 2010 - 2020.....	18
Table 11: New Multi-Family Residential Units by Demographic Area, Ada County, 2010 - 2020.....	19
Table 12: New Manufactured/Mobile Home Residential Units by Demographic, Ada County, 2010 - 2020 .....	20
Table 13: New Single-Family Residential Units by Demographic Area, Canyon County, 2010 - 2020.....	21
Table 14: New Multi-Family Residential Units by Demographic Area, Canyon County, 2010 - 2020 .....	22
Table 15: New Manufactured/Mobile Home Residential Units by Demographic Area, Canyon County, 2010 - 2020.....	23
Table 16: Residential Additions by City Limits, Ada County, 2017 - 2020.....	24
Table 17: Residential Additions by City Limits, Canyon County, 2017 - 2020.....	24

## List of Figures

Figure 1: Total New Building Permits, 2001-2020 .....	3
Figure 2: Total New Residential Units, 2001-2020 .....	4
Figure 3: New Residential Units, Density per Square Mile, Ada and Canyon Counties, 2020....	9
Figure 4: New Building Permits by Demographic Area, Ada County, 2020 .....	10
Figure 5: New Building Permits by Area of Impact, Ada County, 2020.....	11
Figure 6: New Building Permits by Demographic Area, Canyon County, 2020 .....	12
Figure 7: New Building Permits by Area of Impact, Canyon County, 2020.....	13

## Introduction

The *2020 Development Monitoring Report* provides an overview of development trends within Ada and Canyon Counties, Idaho. It is used for tracking growth, providing inputs to the regional travel demand forecast model, and planning for future development. The Community Planning Association of Southwest Idaho (COMPASS) has compiled similar reports for Ada County since 1980 and for Canyon County since 1999.

The primary sources of data for this report were building permits collected from land use agencies within Ada and Canyon Counties. The figures and tables found in this report provide data on new buildings in 2020. Building permits are categorized and mapped, by type, including:

- **Single-Family Residential:** free-standing residential building, intended for one household.
- **Multi-Family Residential:** multiple separate housing units for residential inhabitants contained within one building or several buildings within one complex.
- **Manufactured/Mobile Home Residential:** homes built entirely in a factory and transported to the site and installed.
- **Non-Residential:** all other units, not intended for long-term residential use, including agricultural buildings, manufacturing or industrial buildings, retail buildings, office buildings, and public or quasi-public buildings. This includes group quarters where people live or stay in a group living arrangement that is owned or managed by a separate entity or organization. Examples of group quarters include correctional facilities, nursing homes, and university student housing.

In this report, building permit data are organized according to the following geographies:

- **City Limits:** the official jurisdictional and taxing boundaries of the cities. City limit boundaries tend to expand year after year as city councils approve property annexations. Building permits in this report reflect the city limit boundaries at the time of reporting.
- **Areas of Impact:** specific, agreed-upon areas, outside of a city's legal boundaries, for future annexation and expansion.
- **Demographic Areas:** collections of Transportation Analysis Zones (TAZs) that roughly follow city boundaries. A TAZ is a special area delineated by state and/or local transportation officials for tabulating traffic-related data. Although city limit boundaries are continuously expanding, demographic areas and TAZ boundaries are relatively static, often changing only once a decade, and therefore provide a good geographic area by which to analyze growth trends within a constant boundary over a range of time. Demographic area boundaries were updated for this report. Previous demographic areas were established in 2008.

This *2020 Development Monitoring Report*, previous years' reports, and other development-related data are available on the COMPASS website at:

<http://www.compassidaho.org/prodserv/gtsm-devmonitoring.htm>.

Any questions or concerns regarding the report may be directed to Carl Miller at (208) 475-2239, or [info@compassidaho.org](mailto:info@compassidaho.org). Custom data analysis for specific areas is available upon request.

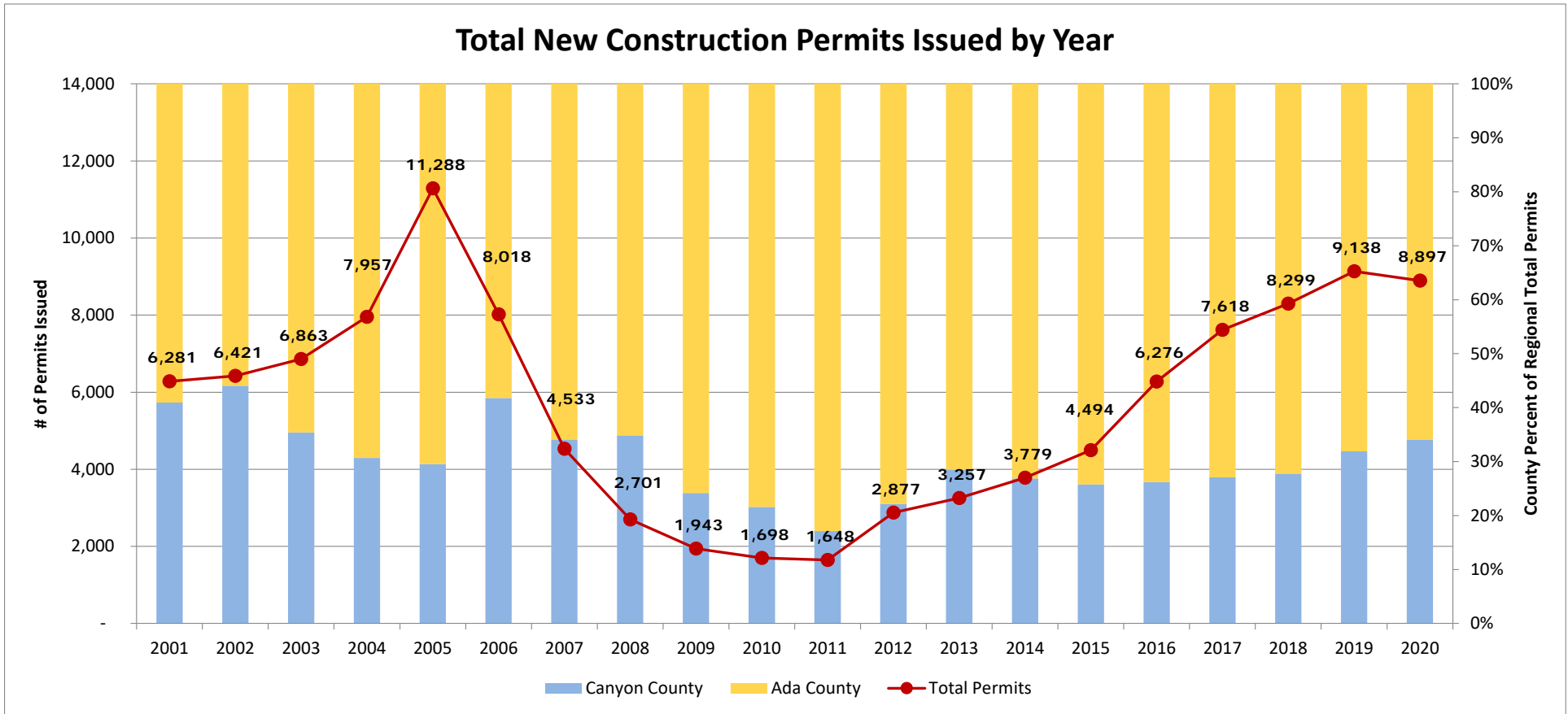


Figure 1: Total New Building Permits, 2001 - 2020

Table 1: Total New Building Permits, 2010 - 2020

	2010	2011	2012	2013	2014	2015	2016	2017	2018	2019	2020
Ada County	1,331	1,366	2,240	2,329	2,764	3,335	4,632	5,555	5,996	6,224	5,872
Canyon County	367	282	637	928	1,015	1,159	1,644	2,063	2,303	2,914	3,025
Ada County %	78%	83%	78%	72%	73%	74%	74%	73%	72%	68%	66%
Canyon County %	22%	17%	22%	28%	27%	26%	26%	27%	28%	32%	34%
Total Permits	1,698	1,648	2,877	3,257	3,779	4,494	6,276	7,618	8,299	9,138	8,897

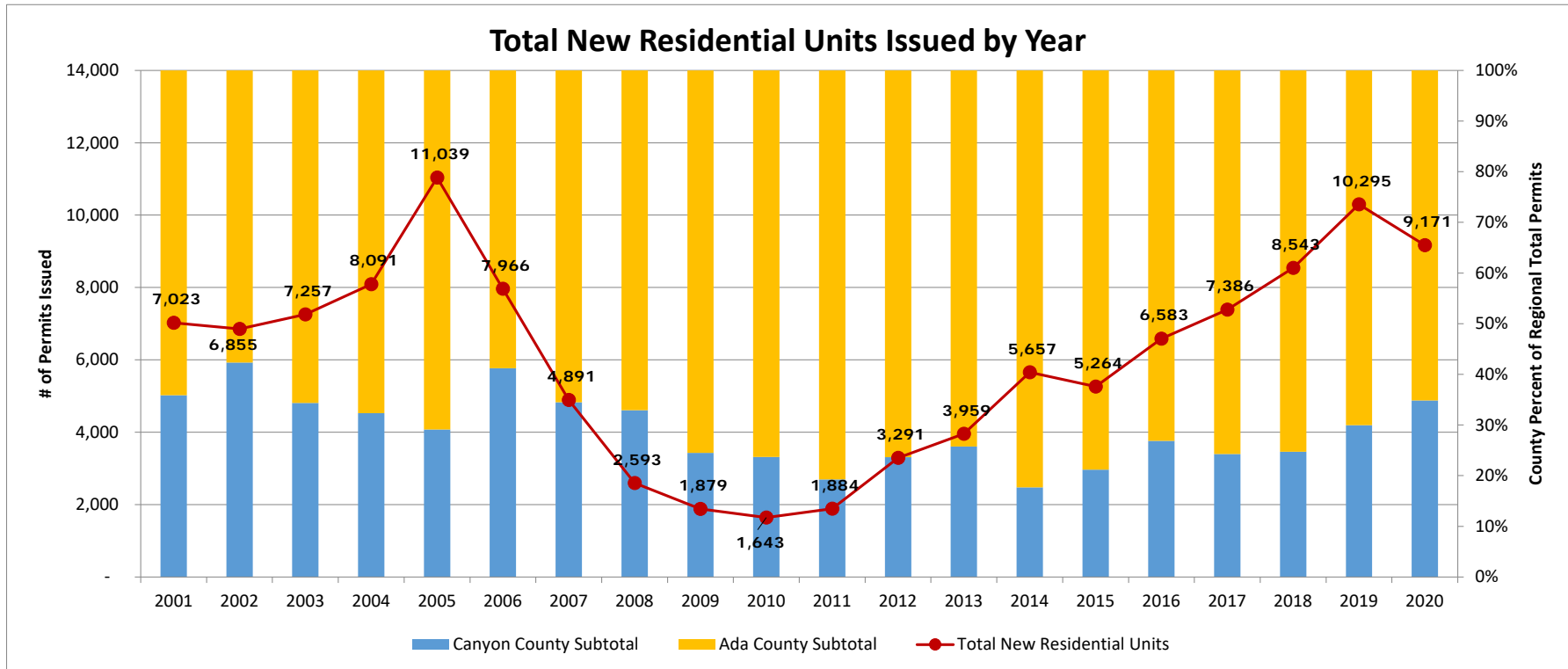


Figure 2: Total New Residential Units, 2001 – 2020

Table 2: New Residential Units by City Limits, 2010 – 2020

City	2010	2011	2012	2013	2014	2015	2016	2017	2018	2019	2020
Boise	345	573	776	717	2,024	1,380	1,450	1,076	1,190	1,785	1,102
Caldwell	175	64	211	302	291	348	505	445	600	791	874
Eagle	105	140	225	310	572	465	493	732	681	900	511
Garden City	6	1	26	41	51	38	171	72	100	34	19
Greenleaf	1	0	0	0	0	0	0	0	2	3	4
Kuna	92	56	103	137	115	223	326	463	628	721	836
Melba	0	0	0	1	0	0	0	0	4	0	1
Meridian	506	521	1,041	1,295	1,372	1,471	1,662	2,277	3,125	2,931	2,493
Middleton	28	20	77	148	131	114	111	186	154	189	170
Nampa	134	220	417	403	386	416	887	799	996	1,738	1,743
Notus	0	0	0	0	0	0	0	0	1	0	0
Parma	2	3	-1	6	2	3	1	5	5	0	2
Star	38	49	143	231	200	208	245	333	271	314	535
Wilder	0	0	0	1	0	12	17	19	14	1	0
Unincorporated Ada	162	180	199	208	322	363	466	639	434	526	481
Unincorporated Canyon	49	57	74	159	191	223	249	340	338	362	400
Ada County Subtotal	1,254	1,521	2,513	2,939	4,656	4,148	4,813	5,592	6,429	7,211	5,977
Canyon County Subtotal	389	363	778	1,020	1,001	1,116	1,770	1,794	2,114	3,084	3,194
<b>Total New Residential Units</b>	<b>1,643</b>	<b>1,884</b>	<b>3,291</b>	<b>3,959</b>	<b>5,657</b>	<b>5,264</b>	<b>6,583</b>	<b>7,386</b>	<b>8,543</b>	<b>10,295</b>	<b>9,171</b>
Percent Multi & Manufactured	9%	26%	24%	20%	44%	23%	28%	25%	29%	32%	32%

Table 3: Total New Residential Units by City Limits as a Percentage of Regional Total, 2010 - 2020

City	2010	2011	2012	2013	2014	2015	2016	2017	2018	2019	2020
Boise	21.0%	30.4%	23.6%	18.1%	35.8%	26.2%	22.0%	14.6%	13.9%	17.3%	12.0%
Caldwell	10.7%	3.4%	6.4%	7.6%	5.1%	6.6%	7.7%	6.0%	7.0%	7.7%	9.5%
Eagle	6.4%	7.4%	6.8%	7.8%	10.1%	8.8%	7.5%	9.9%	8.0%	8.7%	5.6%
Garden City	0.4%	0.1%	0.8%	1.0%	0.9%	0.7%	2.6%	1.0%	1.2%	0.3%	0.2%
Greenleaf	0.1%	0.0%	0.0%	0.0%	0.0%	0.0%	0.0%	0.0%	0.1%	0.1%	0.1%
Kuna	5.6%	3.0%	3.1%	3.5%	2.0%	4.2%	5.0%	6.3%	7.4%	7.0%	9.1%
Melba	0.0%	0.0%	0.0%	0.0%	0.0%	0.0%	0.0%	0.0%	0.0%	0.0%	0.0%
Meridian	30.8%	27.7%	31.6%	32.7%	24.3%	27.9%	25.2%	30.8%	36.6%	28.5%	27.2%
Middleton	1.7%	1.1%	2.3%	3.7%	2.3%	2.2%	1.7%	2.5%	1.8%	1.8%	1.9%
Nampa	8.2%	11.7%	12.7%	10.2%	6.8%	7.9%	13.5%	10.8%	11.7%	16.9%	19.0%
Notus	0.0%	0.0%	0.0%	0.0%	0.0%	0.0%	0.0%	0.0%	0.0%	0.0%	0.0%
Parma	0.1%	0.2%	0.0%	0.2%	0.0%	0.1%	0.0%	0.1%	0.1%	0.0%	0.0%
Star	2.3%	2.6%	4.3%	5.8%	3.5%	4.0%	3.7%	4.5%	3.2%	3.1%	5.8%
Wilder	0.0%	0.0%	0.0%	0.0%	0.0%	0.2%	0.3%	0.3%	0.2%	0.0%	0.0%
Unincorporated Ada	9.9%	9.6%	6.0%	5.3%	5.7%	6.9%	7.1%	8.7%	5.1%	5.1%	5.2%
Unincorporated Canyon	3.0%	3.0%	2.2%	4.0%	3.4%	4.2%	3.8%	4.6%	4.0%	3.5%	4.4%
Ada County Subtotal	76.3%	80.7%	76.4%	74.2%	82.3%	78.8%	73.1%	75.7%	75.3%	70.0%	65.2%
Canyon County Subtotal	23.7%	19.3%	23.6%	25.8%	17.7%	21.2%	26.9%	24.3%	24.7%	30.0%	34.8%
Total New Residential Units	100.0%	100.0%	100.0%	100.0%	100.0%	100.0%	100.0%	100.0%	100.0%	100.0%	100.0%

Table 4: New Non-Residential Permits Issued by City Limits, 2010 – 2020

City	2010	2011	2012	2013	2014	2015	2016	2017	2018	2019	2019	2020
Boise	23	30	32	70	73	40	84	92	61	73	73	59
Caldwell	8	5	10	13	20	24	25	48	31	31	31	30
Eagle	3	5	8	2	6	11	21	10	4	15	15	9
Garden City	5	4	2	10	5	11	9	4	3	6	6	0
Greenleaf	1	0	0	0	0	0	0	0	1	0	0	1
Kuna	4	0	1	1	5	2	14	9	11	9	9	0
Melba	3	0	0	0	0	1	0	0	1	0	0	0
Meridian	31	24	84	42	76	59	51	61	97	63	63	55
Middleton	0	0	0	3	4	1	1	3	4	10	10	0
Nampa	14	13	12	17	37	23	50	40	53	31	31	23
Notus	0	0	0	1	0	0	0	0	0	0	0	0
Parma	2	1	4	0	0	2	0	5	0	1	1	1
Star	0	0	1	0	0	2	4	2	7	5	5	2
Wilder	0	3	0	0	0	0	1	0	0	0	0	1
Unincorporated Ada	0	3	0	2	7	63	17	7	8	4	4	3
Unincorporated Canyon	7	3	11	8	17	9	11	35	22	20	20	9
Ada County Subtotal	66	66	128	127	172	188	200	185	191	175	175	128
Canyon County Subtotal	35	25	37	42	78	60	88	131	112	93	93	65
Total New Non-Residential Permits	101	91	165	169	250	248	288	316	303	268	268	193



Table 5: New Non-Residential Permits Issued by City Limits as a Percentage of Regional Total, 2010 - 2020

Table 5: New Non-Residential Permits by City Limits as a Percentage of Regional Total												
City	2010	2011	2012	2013	2014	2015	2016	2017	2018	2019	2019	2020
Boise	22.8%	33.0%	19.4%	41.4%	29.2%	16.1%	29.2%	29.1%	20.1%	27.2%	27.2%	30.6%
Caldwell	7.9%	5.5%	6.1%	7.7%	8.0%	9.7%	8.7%	15.2%	10.2%	11.6%	11.6%	15.5%
Eagle	3.0%	5.5%	4.8%	1.2%	2.4%	4.4%	7.3%	3.2%	1.3%	5.6%	5.6%	4.7%
Garden City	5.0%	4.4%	1.2%	5.9%	2.0%	4.4%	3.1%	1.3%	1.0%	2.2%	2.2%	0.0%
Greenleaf	1.0%	0.0%	0.0%	0.0%	0.0%	0.0%	0.0%	0.0%	0.3%	0.0%	0.0%	0.5%
Kuna	4.0%	0.0%	0.6%	0.6%	2.0%	0.8%	4.9%	2.8%	3.6%	3.4%	3.4%	0.0%
Melba	3.0%	0.0%	0.0%	0.0%	0.0%	0.4%	0.0%	0.0%	0.3%	0.0%	0.0%	0.0%
Meridian	30.7%	26.4%	50.9%	24.9%	30.4%	23.8%	17.7%	19.3%	32.0%	23.5%	23.5%	28.5%
Middleton	0.0%	0.0%	0.0%	1.8%	1.6%	0.4%	0.3%	0.9%	1.3%	3.7%	3.7%	0.0%
Nampa	13.9%	14.3%	7.3%	10.1%	14.8%	9.3%	17.4%	12.7%	17.5%	11.6%	11.6%	11.9%
Notus	0.0%	0.0%	0.0%	0.6%	0.0%	0.0%	0.0%	0.0%	0.0%	0.0%	0.0%	0.0%
Parma	2.0%	1.1%	2.4%	0.0%	0.0%	0.8%	0.0%	1.6%	0.0%	0.4%	0.4%	0.5%
Star	0.0%	0.0%	0.6%	0.0%	0.0%	0.8%	1.4%	0.6%	2.3%	1.9%	1.9%	1.0%
Wilder	0.0%	3.3%	0.0%	0.0%	0.0%	0.0%	0.3%	0.0%	0.0%	0.0%	0.0%	0.5%
Unincorporated Ada	0.0%	3.3%	0.0%	1.2%	2.8%	25.4%	5.9%	2.2%	2.6%	1.5%	1.5%	1.6%
Unincorporated Canyon	6.9%	3.3%	6.7%	4.7%	6.8%	3.6%	3.8%	11.1%	7.3%	7.5%	7.5%	4.7%
Ada County Subtotal	65.3%	72.5%	77.6%	75.1%	68.8%	75.8%	69.4%	58.5%	63.0%	65.3%	65.3%	66.3%
Canyon County Subtotal	34.7%	27.5%	22.4%	24.9%	31.2%	24.2%	30.6%	41.5%	37.0%	34.7%	34.7%	33.7%
Total New Non-Residential Permits	100.0%	100.0%	100.0%	100.0%	100.0%	100.0%	100.0%	100.0%	100.0%	100.0%	100.0%	100.0%

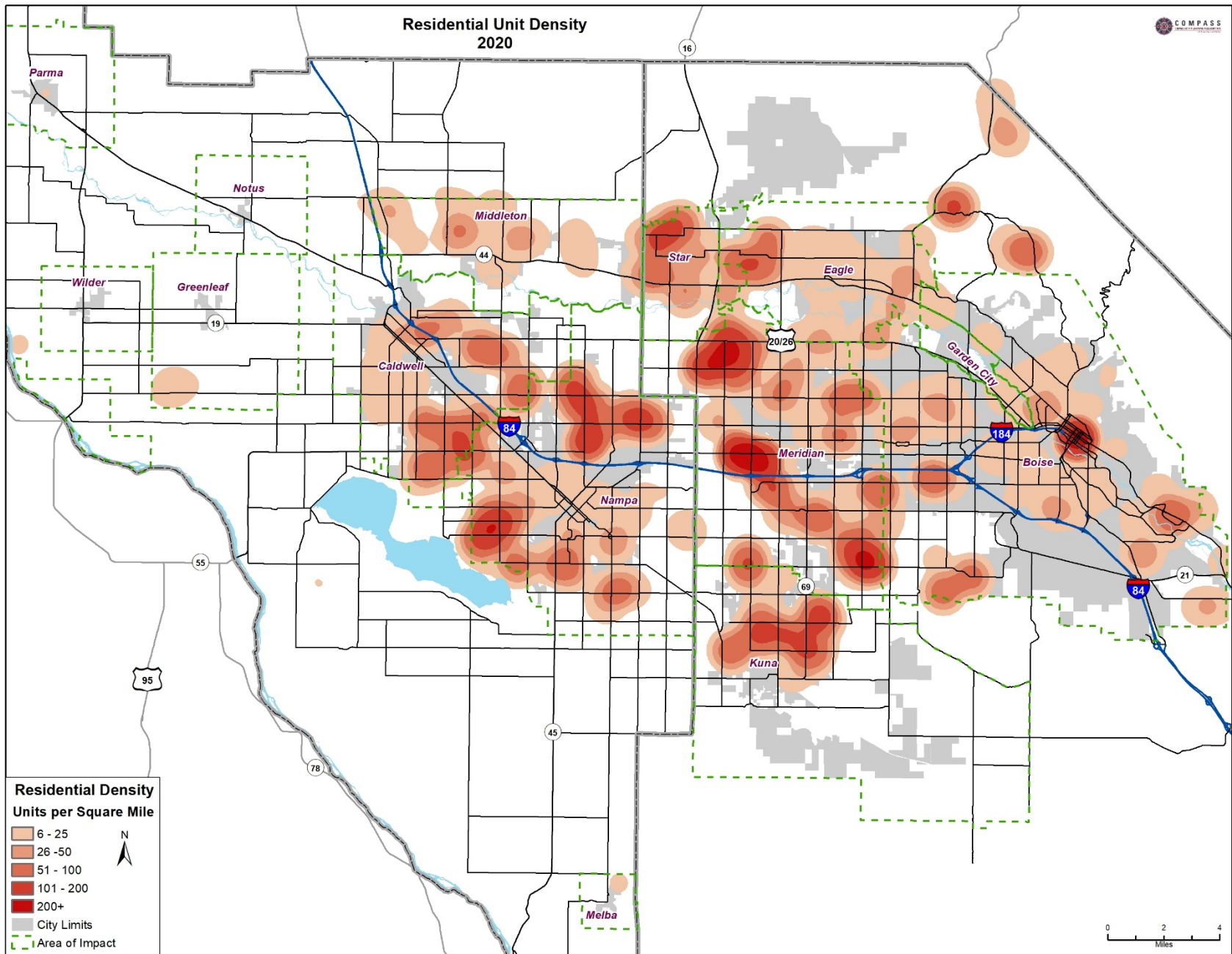


Figure 3: New Residential Units, Density per Square Mile, Ada and Canyon Counties, 2020

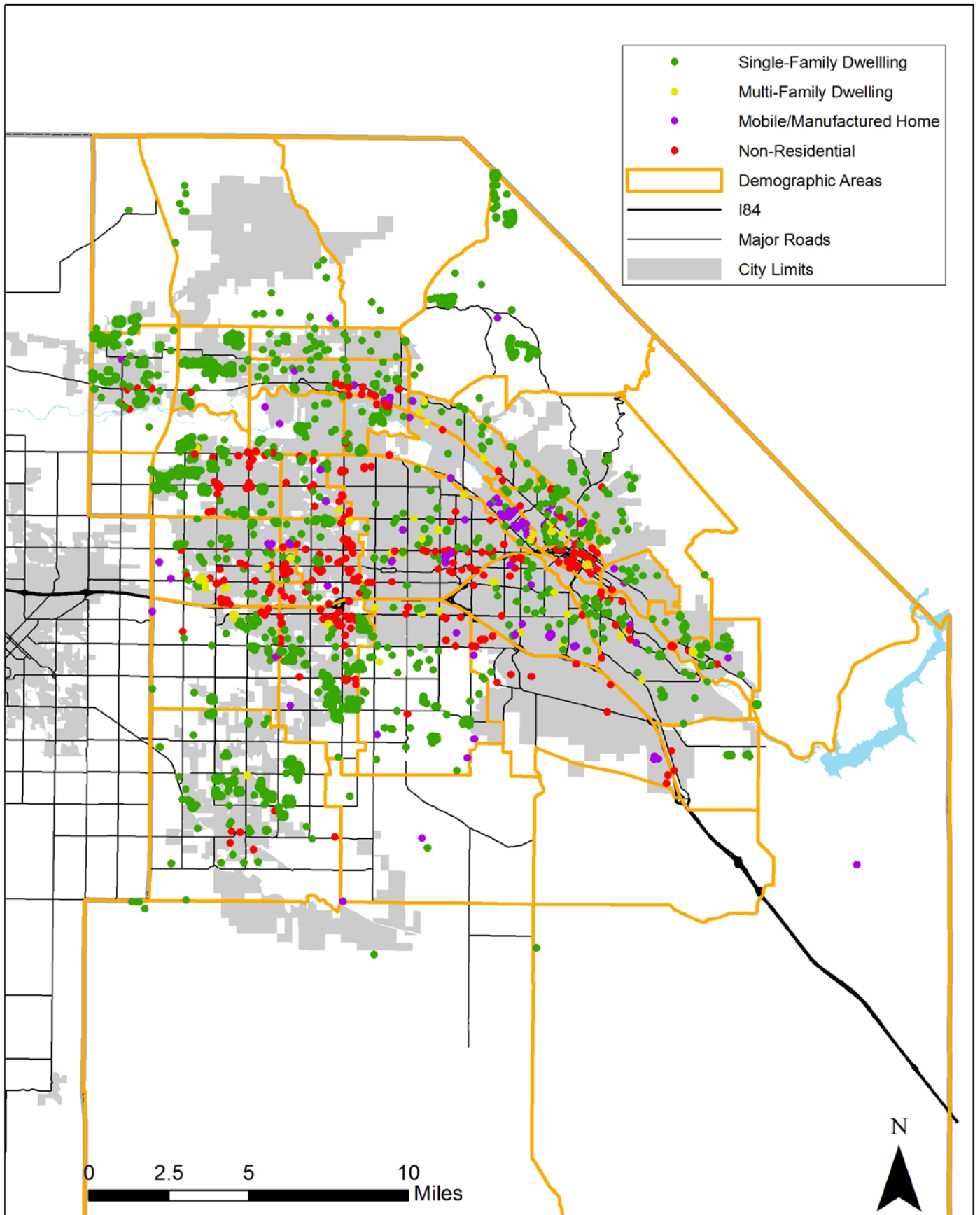


Figure 4: New Building Permits by Demographic Area, Ada County, 2020

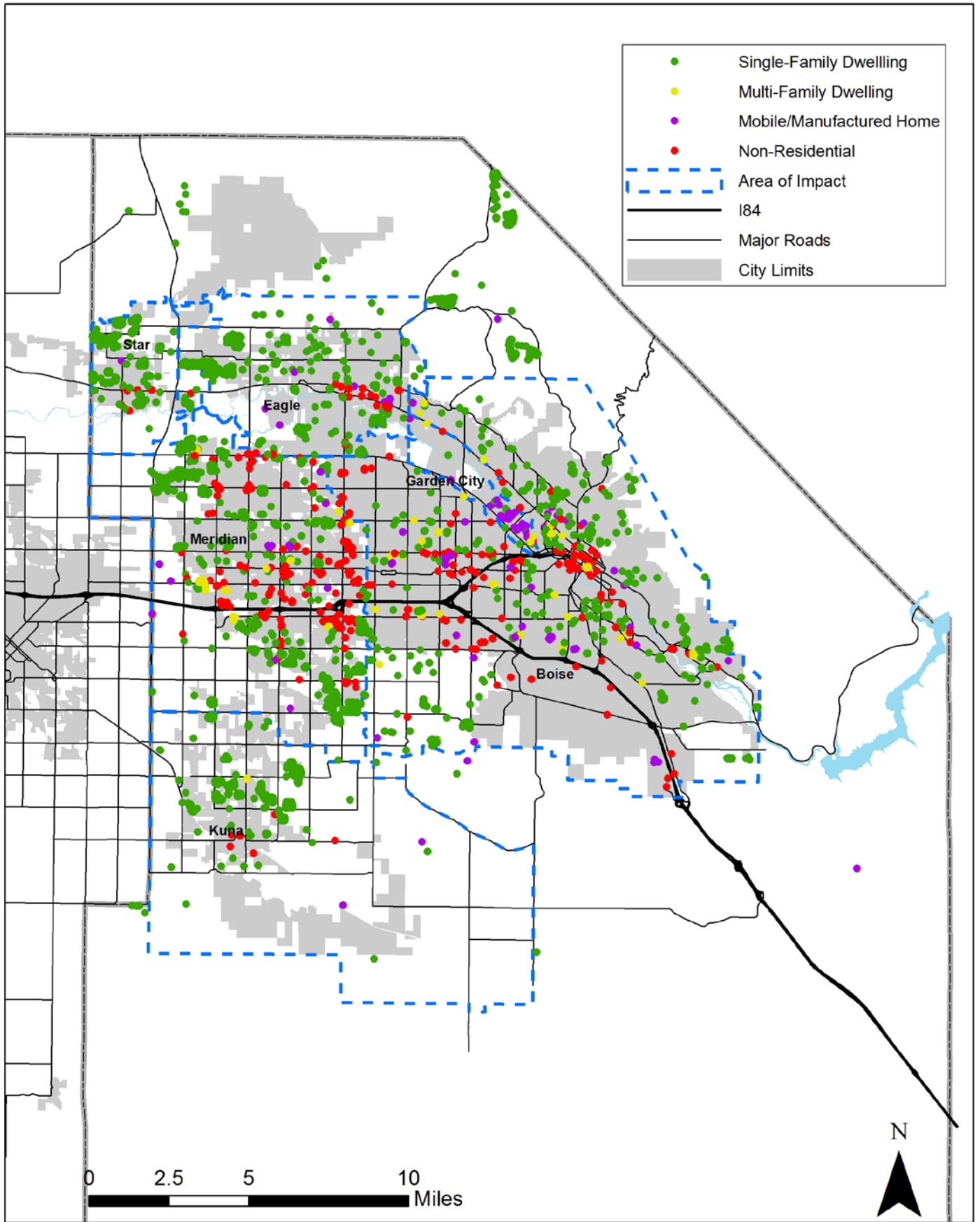


Figure 5: New Building Permits by Area of Impact, Ada County, 2020

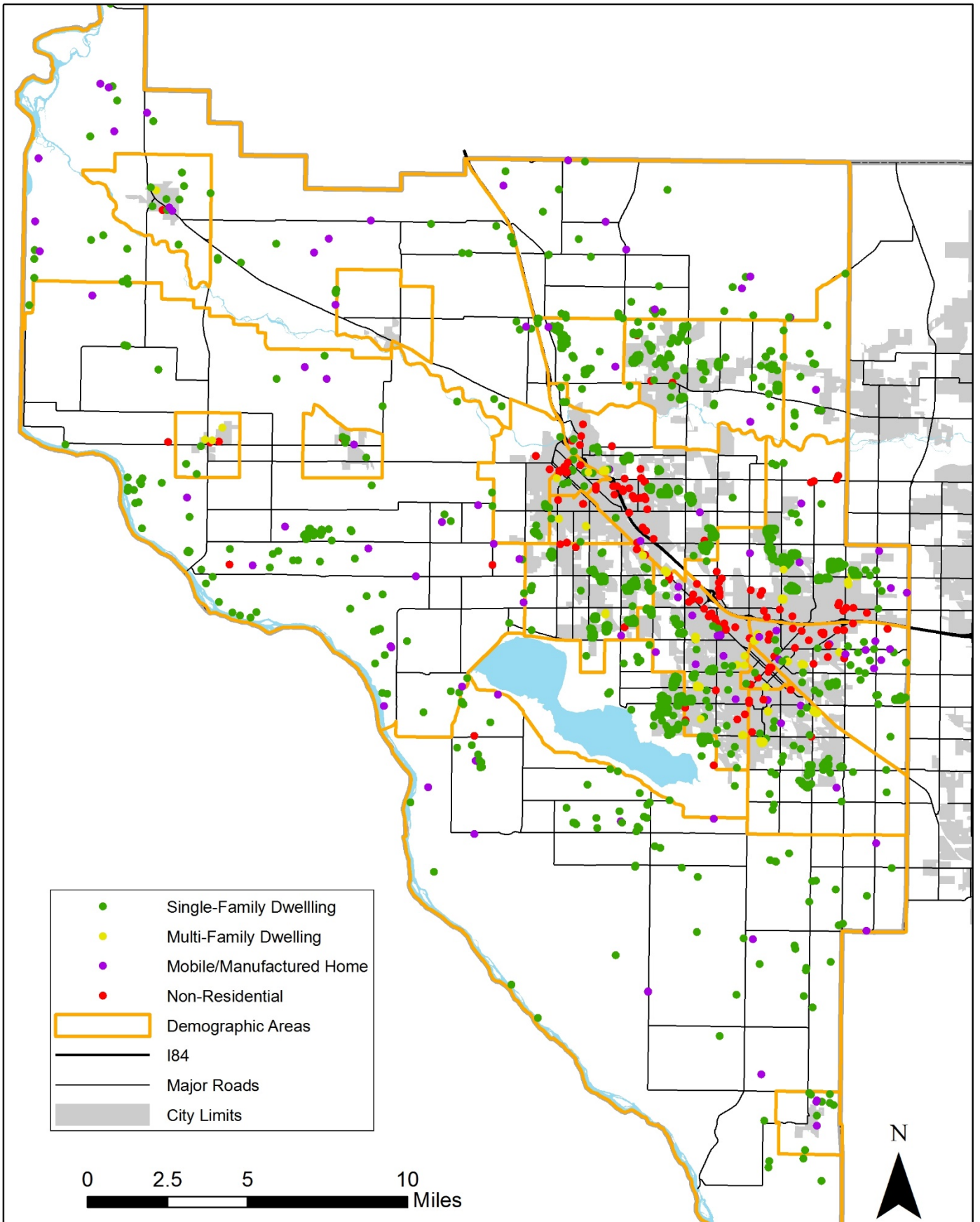


Figure 6: New Building Permits by Demographic Area, Canyon County, 2020

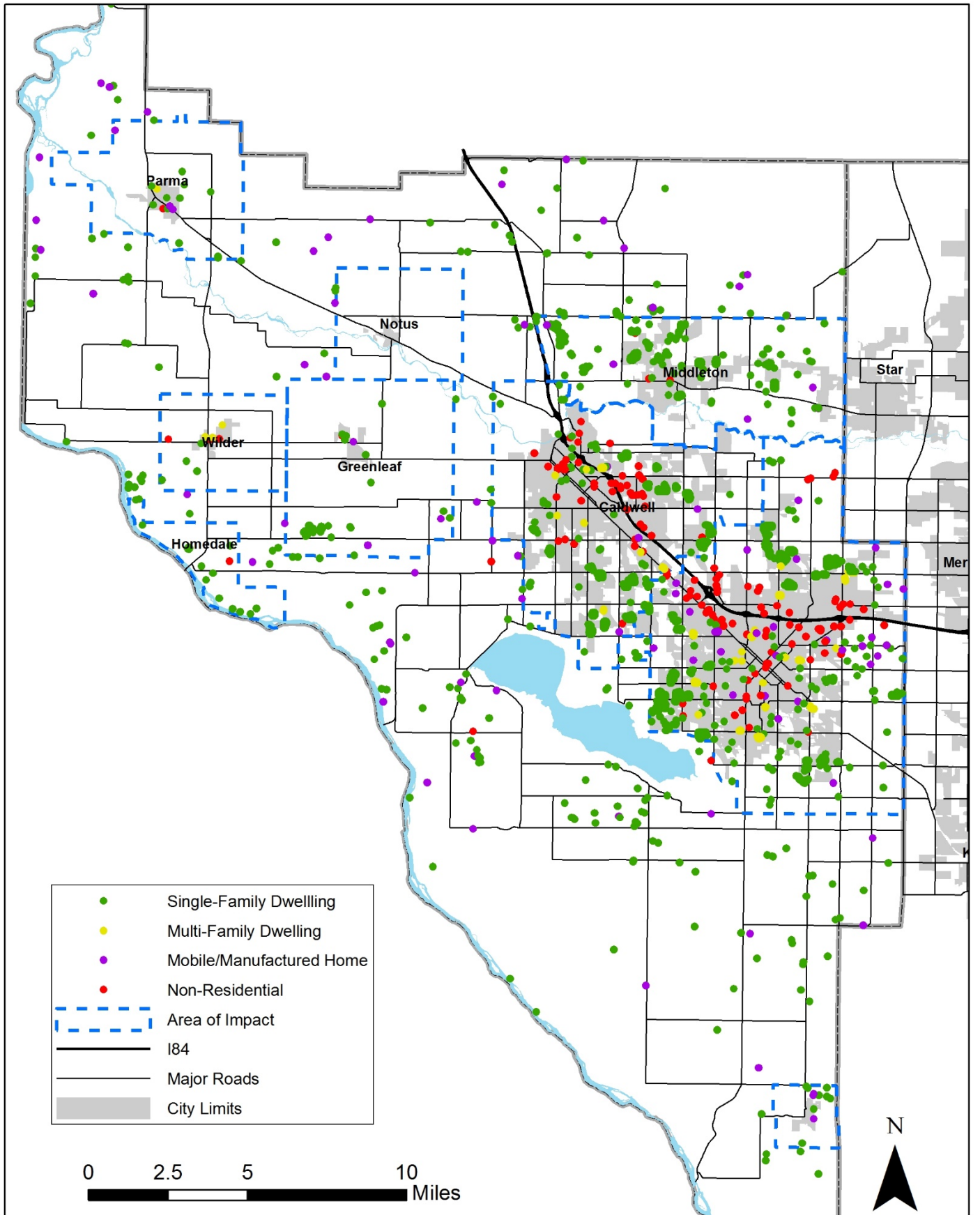


Figure 7: New Building Permits by Area of Impact, Canyon County, 2020

Table 6: New Residential Units by Type by City Limits, Ada County, 2010 - 2020<sup>1</sup>

<b>Single-Family Residential Units</b>											
<b>CITY</b>	<b>2010</b>	<b>2011</b>	<b>2012</b>	<b>2013</b>	<b>2014</b>	<b>2015</b>	<b>2016</b>	<b>2017</b>	<b>2018</b>	<b>2019</b>	<b>2020</b>
Boise	323	327	483	493	396	619	470	556	599	583	458
Eagle	103	139	224	289	395	446	489	658	656	433	515
Garden City	9	8	27	38	33	31	28	31	34	6	3
Kuna	92	56	103	136	114	221	314	357	532	659	824
Meridian	502	464	769	815	758	1,050	1,389	1,474	1,813	2,112	1,854
Star	38	50	143	228	199	208	209	331	271	314	535
Ada County Unincorporated	150	172	200	207	311	349	456	498	402	500	463
<b>Ada County Total</b>	<b>1,217</b>	<b>1,216</b>	<b>1,949</b>	<b>2,206</b>	<b>2,206</b>	<b>2,924</b>	<b>3,355</b>	<b>3,905</b>	<b>4,307</b>	<b>4,607</b>	<b>4,652</b>
<b>Multi-Family Residential Units</b>											
<b>CITY</b>	<b>2010</b>	<b>2011</b>	<b>2012</b>	<b>2013</b>	<b>2014</b>	<b>2015</b>	<b>2016</b>	<b>2017</b>	<b>2018</b>	<b>2019</b>	<b>2020</b>
Boise	24	232	293	189	1,573	758	901	499	565	1,120	622
Eagle	0	0	1	17	96	16	4	66	32	460	0
Garden City	0	2	0	0	2	0	143	32	68	25	29
Kuna	0	0	0	0	0	0	0	104	96	56	12
Meridian	0	56	272	472	604	414	260	798	1,303	803	634
Star	0	0	0	2	0	0	37	0	0	0	0
Ada County Unincorporated	10	0	0	0	4	6	0	122	24	4	15
<b>Ada County Total</b>	<b>34</b>	<b>290</b>	<b>566</b>	<b>680</b>	<b>2,279</b>	<b>1,194</b>	<b>1,345</b>	<b>1,621</b>	<b>2,088</b>	<b>2,468</b>	<b>1,312</b>
<b>Manufactured / Mobile Residential Units</b>											
<b>CITY</b>	<b>2010</b>	<b>2011</b>	<b>2012</b>	<b>2013</b>	<b>2014</b>	<b>2015</b>	<b>2016</b>	<b>2017</b>	<b>2018</b>	<b>2019</b>	<b>2020</b>
Boise	-2	14	0	17	27	20	38	44	26	69	22
Eagle	2	1	0	2	82	1	3	-2	-7	-8	-4
Garden City	-3	-9	-1	-4	2	-7	-6	-18	-2	-5	-13
Kuna	0	0	0	0	2	1	0	0	0	-1	0
Meridian	4	1	0	5	7	2	2	6	9	13	5
Star	0	0	0	0	0	0	0	1	0	0	0
Ada County Unincorporated	2	8	-1	0	-1	1	6	8	8	3	3
<b>Ada County Total</b>	<b>3</b>	<b>15</b>	<b>-2</b>	<b>20</b>	<b>119</b>	<b>18</b>	<b>43</b>	<b>39</b>	<b>34</b>	<b>71</b>	<b>13</b>

<sup>1</sup> Negative numbers represent residential unit demolitions.

Table 7: New Residential Units by Type by City Limits, Canyon County, 2010 – 2020<sup>2</sup>

<b>Single-Family Residential Units</b>											
<b>CITY</b>	<b>2010</b>	<b>2011</b>	<b>2012</b>	<b>2013</b>	<b>2014</b>	<b>2015</b>	<b>2016</b>	<b>2017</b>	<b>2018</b>	<b>2019</b>	<b>2020</b>
Caldwell	102	37	195	290	268	336	479	376	487	630	677
Greenleaf	1	0	0	0	0	0	0	0	2	2	3
Melba	0	0	0	0	0	0	0	1	4	0	1
Middleton	28	20	77	148	131	113	111	186	154	189	170
Nampa	103	67	201	297	293	380	419	528	710	1,062	1,176
Notus	0	0	0	0	0	0	0	2	1	0	0
Parma	1	1	-2	4	2	3	0	2	4	-4	0
Star	0	-1	0	-2	0	0	0	0	0	0	0
Wilder	0	0	0	1	0	11	17	19	8	1	0
Unincorporated Canyon County	40	56	72	146	179	198	245	314	297	338	355
<b>Canyon County Total</b>	<b>275</b>	<b>180</b>	<b>543</b>	<b>884</b>	<b>873</b>	<b>1,041</b>	<b>1,271</b>	<b>1,428</b>	<b>1,667</b>	<b>2,218</b>	<b>2,382</b>
<b>Multi-Family Residential Units</b>											
<b>CITY</b>	<b>2010</b>	<b>2011</b>	<b>2012</b>	<b>2013</b>	<b>2014</b>	<b>2015</b>	<b>2016</b>	<b>2017</b>	<b>2018</b>	<b>2019</b>	<b>2020</b>
Caldwell	49	0	16	0	12	0	4	47	108	144	194
Greenleaf	0	0	0	0	0	0	0	0	0	0	0
Melba	0	0	0	0	0	0	0	0	0	0	0
Middleton	0	0	0	0	0	0	0	0	0	0	0
Nampa	16	147	216	100	73	26	456	263	277	663	556
Notus	0	0	0	0	0	0	0	0	0	0	0
Parma	0	0	1	0	0	0	0	0	0	0	0
Star	0	0	0	0	0	0	0	0	0	0	0
Wilder	0	0	0	0	0	0	0	0	6	0	0
Unincorporated Canyon County	0	0	2	0	0	0	0	0	0	0	0
<b>Canyon County Total</b>	<b>65</b>	<b>147</b>	<b>235</b>	<b>100</b>	<b>85</b>	<b>26</b>	<b>460</b>	<b>310</b>	<b>391</b>	<b>807</b>	<b>750</b>
<b>Manufactured / Mobile Residential Units</b>											
<b>CITY</b>	<b>2010</b>	<b>2011</b>	<b>2012</b>	<b>2013</b>	<b>2014</b>	<b>2015</b>	<b>2016</b>	<b>2017</b>	<b>2018</b>	<b>2019</b>	<b>2020</b>
Caldwell	24	27	0	22	20	1	16	9	5	14	3
Greenleaf	0	0	0	0	0	0	0	0	0	0	1
Melba	0	0	0	1	0	0	0	0	0	0	0
Middleton	0	0	0	0	0	0	0	0	0	0	0
Nampa	15	6	0	5	8	1	15	10	9	5	11
Notus	0	0	0	0	0	0	0	0	0	1	0
Parma	1	2	0	2	0	0	1	3	1	2	2
Star	0	0	0	0	0	0	0	0	0	0	0
Wilder	0	0	0	0	0	1	0	1	0	0	0
Unincorporated Canyon County	9	1	0	26	33	18	31	40	41	40	45
<b>Canyon County Total</b>	<b>49</b>	<b>36</b>	<b>0</b>	<b>56</b>	<b>61</b>	<b>21</b>	<b>63</b>	<b>63</b>	<b>56</b>	<b>62</b>	<b>62</b>

<sup>2</sup> Negative numbers represent residential unit demolitions.



Table 8: New Residential Units by Type by Area of Impact, Ada County, 2010 - 2020<sup>3</sup>

<b>Single-Family Residential Units</b>											
<b>Area of Impact</b>	<b>2010</b>	<b>2011</b>	<b>2012</b>	<b>2013</b>	<b>2014</b>	<b>2015</b>	<b>2016</b>	<b>2017</b>	<b>2018</b>	<b>2019</b>	<b>2020</b>
Boise	444	441	641	632	616	842	470	865	774	743	606
Eagle	106	138	228	290	398	460	489	663	666	431	520
Garden City	9	8	27	38	33	29	28	31	34	6	0
Kuna	43	25	81	90	92	137	314	387	547	673	772
Meridian	507	469	777	827	768	1,051	1,389	1,494	1,845	2,116	1,905
Star	38	53	144	230	200	209	209	336	272	315	502
Outside Area of Impact	70	82	51	99	99	196	456	129	169	323	347
Ada County Total	1,217	1,216	1,949	2,206	2,206	2,924	3,355	3,905	4,307	4,607	4,652
<b>Multi-Family Residential Units</b>											
<b>Area of Impact</b>	<b>2010</b>	<b>2011</b>	<b>2012</b>	<b>2013</b>	<b>2014</b>	<b>2015</b>	<b>2016</b>	<b>2017</b>	<b>2018</b>	<b>2019</b>	<b>2020</b>
Boise	34	232	293	217	1,577	764	901	594	587	1,122	627
Eagle	0	0	1	17	96	16	4	68	32	460	0
Garden City	0	2	0	0	2	0	143	32	68	25	0
Kuna	0	0	0	0	0	0	12	104	96	56	12
Meridian	0	56	272	472	604	414	260	823	1,305	803	634
Star	0	0	0	2	0	0	37	0	0	0	0
Outside Area of Impact	0	0	0	0	0	0	0	0	0	2	39
Ada County Total	34	290	566	708	2,279	1,194	1,357	1,621	2,088	2,468	1,312
<b>Manufactured / Mobile Residential Units</b>											
<b>Area of Impact</b>	<b>2010</b>	<b>2011</b>	<b>2012</b>	<b>2013</b>	<b>2014</b>	<b>2015</b>	<b>2016</b>	<b>2017</b>	<b>2018</b>	<b>2019</b>	<b>2020</b>
Boise	-1	18	-1	16	26	20	38	44	28	69	24
Eagle	2	1	0	3	82	1	3	1	-6	-8	-3
Garden City	-3	-9	-1	-4	2	-7	-6	-18	-2	-5	0
Kuna	0	0	0	0	2	1	0	4	3	0	2
Meridian	4	4	0	5	7	2	2	7	9	14	4
Star	0	0	0	1	0	0	0	1	0	0	0
Outside Area of Impact	1	1	0	-1	0	1	6	0	2	1	-14
Ada County Total	3	15	-2	20	119	18	43	39	34	71	13

<sup>3</sup> Negative numbers represent residential unit demolitions.

Table 9: New Residential Units by Type by Area of Impact, Canyon County, 2010 – 2020

<b>Single-Family Residential Units</b>											
<b>Area of Impact</b>	<b>2010</b>	<b>2011</b>	<b>2012</b>	<b>2013</b>	<b>2014</b>	<b>2015</b>	<b>2016</b>	<b>2017</b>	<b>2018</b>	<b>2019</b>	<b>2020</b>
Caldwell	100	35	185	277	224	347	479	396	499	643	686
Greenleaf	3	1	1	4	5	7	0	14	20	23	33
Homedale	0	0	0	6	5	4	0	15	16	0	0
Melba	3	0	1	0	0	0	0	7	5	6	8
Middleton	35	28	87	165	165	138	111	246	206	262	259
Nampa	109	89	217	326	327	382	419	584	781	1,126	1,223
Notus	1	0	0	0	1	2	0	6	1	2	0
Parma	1	2	0	5	4	4	0	4	5	0	6
Star	0	0	0	0	0	0	0	0	0	0	0
Wilder	0	1	1	2	1	11	17	28	13	7	2
Outside Area of Impact	23	24	49	101	141	146	245	128	121	149	165
<b>Canyon County Total</b>	<b>275</b>	<b>180</b>	<b>541</b>	<b>886</b>	<b>873</b>	<b>1,041</b>	<b>1,271</b>	<b>1,428</b>	<b>1,667</b>	<b>2,218</b>	<b>2,382</b>
<b>Multi-Family Residential Units</b>											
<b>Area of Impact</b>	<b>2010</b>	<b>2011</b>	<b>2012</b>	<b>2013</b>	<b>2014</b>	<b>2015</b>	<b>2016</b>	<b>2017</b>	<b>2018</b>	<b>2019</b>	<b>2020</b>
Caldwell	49	0	16	0	12	0	4	47	108	144	194
Greenleaf	0	0	0	0	0	0	0	0	0	0	0
Homedale	0	0	0	0	0	0	0	0	0	0	0
Melba	0	0	0	0	0	0	0	0	0	0	0
Middleton	0	0	0	0	0	0	0	0	0	0	0
Nampa	16	147	217	100	73	26	456	263	277	663	556
Notus	0	0	0	0	0	0	0	0	0	0	0
Parma	0	0	1	0	0	0	0	0	0	0	0
Star	0	0	0	0	0	0	0	0	0	0	0
Wilder	0	0	0	0	0	0	0	0	6	0	0
Outside Area of Impact	0	0	1	0	0	0	0	0	0	0	0
<b>Canyon County Total</b>	<b>65</b>	<b>147</b>	<b>235</b>	<b>100</b>	<b>85</b>	<b>26</b>	<b>460</b>	<b>310</b>	<b>391</b>	<b>807</b>	<b>750</b>
<b>Manufactured / Mobile Residential Units</b>											
<b>Area of Impact</b>	<b>2010</b>	<b>2011</b>	<b>2012</b>	<b>2013</b>	<b>2014</b>	<b>2015</b>	<b>2016</b>	<b>2017</b>	<b>2018</b>	<b>2019</b>	<b>2020</b>
Greenleaf	24	27	0	26	22	3	16	12	9	16	2
Greenleaf	0	0	0	0	3	0	0	5	3	1	2
Homedale	0	0	0	0	1	1	0	0	2	0	0
Melba	1	0	0	2	0	1	0	1	0	0	2
Middleton	0	0	0	2	5	4	0	3	4	1	3
Nampa	16	6	0	6	14	2	15	16	14	10	24
Notus	0	0	0	0	0	0	0	1	0	1	0
Parma	1	2	0	4	0	0	1	3	1	3	3
Star	0	0	0	0	0	0	0	0	0	0	0
Wilder	0	0	0	0	1	1	0	1	1	1	0
Outside Area of Impact	7	1	0	16	15	9	31	21	22	29	26
<b>Canyon County Total</b>	<b>49</b>	<b>36</b>	<b>0</b>	<b>56</b>	<b>61</b>	<b>21</b>	<b>63</b>	<b>63</b>	<b>56</b>	<b>62</b>	<b>62</b>

Table 10: New Single-Family Residential Units by Demographic Area, Ada County, 2010 - 2020<sup>4</sup>

Single-Family Residential Units											
Demographic Area	2010	2011	2012	2013	2014	2015	2016	2017	2018	2019	2020
Airport	0	0	0	0	-2	-2	-2	0	-1	-1	-1
Central Bench	18	6	9	31	12	31	15	11	53	52	28
Downtown Boise	-3	-4	-3	-3	-5	-6	0	-1	0	-9	-1
East Columbia	4	0	10	30	51	43	37	50	54	60	37
East End	2	2	3	11	2	13	4	13	5	4	6
Foothills	13	25	27	32	54	41	33	41	71	86	55
North End	15	6	6	25	23	13	4	30	32	36	32
Northwest	46	34	52	38	50	61	98	75	96	23	7
South Downtown	0	0	-1	1	0	0	0	0	0	0	0
Southeast	41	64	103	87	50	44	18	23	29	40	91
Southeast--Barber Valley	55	100	151	168	89	188	121	153	188	110	56
Southwest	132	119	166	130	197	297	359	344	269	316	223
West Bench	120	80	113	91	76	91	97	122	70	106	56
<b>Boise Area Subtotal</b>	<b>443</b>	<b>432</b>	<b>636</b>	<b>641</b>	<b>597</b>	<b>814</b>	<b>784</b>	<b>861</b>	<b>866</b>	<b>823</b>	<b>589</b>
Downtown	0	-4	1	0	1	6	4	-1	-9	14	5
East	24	34	55	75	40	88	83	57	80	147	144
North	140	134	243	310	280	362	506	602	695	794	795
Northeast	184	153	199	162	164	187	207	133	59	48	34
Northwest	0	0	0	1	1	0	0	0	1	0	0
Southeast	118	115	182	211	223	285	378	442	540	701	630
Southwest	6	5	27	28	33	81	117	135	172	118	161
West	31	33	53	42	32	42	100	96	213	213	128
<b>Meridian Area Subtotal</b>	<b>503</b>	<b>470</b>	<b>760</b>	<b>829</b>	<b>774</b>	<b>1,051</b>	<b>1,395</b>	<b>1,464</b>	<b>1,751</b>	<b>2,035</b>	<b>1,897</b>
Central	4	-1	6	3	3	2	18	46	106	34	59
Floating Feather	17	30	47	63	25	25	50	64	9	16	25
Eagle Island	36	39	45	67	87	87	37	25	57	39	87
Eagle/Star	3	25	54	87	284	284	192	298	356	262	284
South River	30	29	41	34	26	26	173	180	77	19	26
State Corridor	16	16	33	32	50	50	19	46	51	62	50
<b>Eagle Area Subtotal</b>	<b>106</b>	<b>138</b>	<b>226</b>	<b>286</b>	<b>475</b>	<b>474</b>	<b>489</b>	<b>659</b>	<b>656</b>	<b>432</b>	<b>531</b>
Garden City	9	8	26	37	30	29	28	31	34	6	3
Kuna	93	58	102	136	116	230	315	371	538	669	770
Star	38	52	144	222	178	187	191	294	267	315	372
<b>Other City Subtotal</b>	<b>140</b>	<b>118</b>	<b>272</b>	<b>395</b>	<b>324</b>	<b>446</b>	<b>534</b>	<b>696</b>	<b>839</b>	<b>990</b>	<b>1,145</b>
Blacks Creek Rural	0	0	0	0	0	0	0	0	0	0	0
Dry Creek Rural	16	0	25	40	58	84	82	109	156	300	327
East Foothills	0	0	1	0	2	4	1	1	2	3	2
Foothills Rural	0	0	0	13	14	29	31	45	6	0	14
Northwest Rural	2	0	0	12	23	29	22	44	5	3	129
Southeast Rural	0	0	0	0	1	0	1	-1	1	0	1
Southwest Rural	1	1	2	6	4	6	7	13	5	2	4
Ten Mile Creek Rural	0	0	4	0	1	3	1	1	4	5	1
West Foothills	1	2	6	3	12	5	8	10	16	14	12
<b>Rural Area Subtotal</b>	<b>20</b>	<b>49</b>	<b>29</b>	<b>65</b>	<b>104</b>	<b>160</b>	<b>158</b>	<b>260</b>	<b>200</b>	<b>327</b>	<b>490</b>
<b>Total</b>	<b>1,212</b>	<b>1,207</b>	<b>1,923</b>	<b>2,216</b>	<b>2,274</b>	<b>2,945</b>	<b>3,360</b>	<b>3,940</b>	<b>4,312</b>	<b>4,607</b>	<b>4,652</b>

<sup>4</sup> Negative numbers represent residential unit demolitions.

Table 11: New Multi-Family Residential Units by Demographic Area, Ada County, 2010 – 2020<sup>5</sup>

Demographic Area	2010	2011	2012	2013	2014	2015	2016	2017	2018	2019	2020
Airport	0	0	0	0	0	0	0	0	0	0	0
Central Bench	5	0	26	26	2	0	6	2	264	4	53
Downtown Boise	0	56	0	-8	2	54	239	130	226	315	277
East Columbia	0	0	0	0	0	0	1	0	0	0	0
East End	0	0	0	68	0	28	0	21	0	237	0
Foothills	0	0	0	0	0	0	12	2	0	8	0
North End	0	0	-2	2	0	0	2	0	0	32	35
Northwest	1	0	0	0	182	126	261	52	2	42	14
South Downtown	0	0	0	0	543	0	0	0	0	0	0
Southeast	0	0	3	13	0	299	220	98	2	2	6
Southeast--Barber Valley	0	0	0	0	285	0	74	29	49	27	69
Southwest	10	0	154	84	114	6	4	202	28	2	101
West Bench	18	6	64	56	236	204	111	115	72	453	72
<b>Boise Area Subtotal</b>	<b>34</b>	<b>62</b>	<b>245</b>	<b>241</b>	<b>1,364</b>	<b>717</b>	<b>930</b>	<b>651</b>	<b>643</b>	<b>1,122</b>	<b>627</b>
Downtown	0	0	0	0	0	0	0	28	0	102	4
East	0	0	128	104	248	4	0	134	374	240	46
North	0	0	0	36	88	92	0	280	0	15	14
Northeast	0	170	0	0	8	0	122	0	157	71	32
Northwest	0	0	0	0	0	0	0	0	0	0	0
Southeast	0	48	0	298	260	0	0	0	60	177	14
Southwest	0	0	0	0	0	190	0	64	336	48	72
West	0	8	144	36	0	128	138	260	376	150	452
<b>Meridian Area Subtotal</b>	<b>0</b>	<b>226</b>	<b>272</b>	<b>474</b>	<b>604</b>	<b>414</b>	<b>260</b>	<b>766</b>	<b>1,303</b>	<b>803</b>	<b>634</b>
Central	0	0	1	0	0	0	4	48	0	133	0
Floating Feather	0	0	0	0	0	0	0	0	0	0	0
Eagle Island	0	0	0	0	0	0	0	18	32	20	0
Eagle/Star	0	0	0	0	0	0	0	0	0	307	0
South River	0	0	0	0	0	0	0	0	0	0	0
State Corridor	0	0	0	17	96	16	0	0	0	0	0
<b>Eagle Area Subtotal</b>	<b>0</b>	<b>0</b>	<b>1</b>	<b>17</b>	<b>96</b>	<b>16</b>	<b>4</b>	<b>66</b>	<b>32</b>	<b>460</b>	<b>0</b>
Garden City	0	2	0	0	2	0	143	32	68	25	29
Kuna	0	0	0	0	0	0	12	104	96	56	12
Star	0	0	0	2	0	0	37	0	0	0	0
<b>Other City Subtotal</b>	<b>0</b>	<b>2</b>	<b>0</b>	<b>2</b>	<b>2</b>	<b>0</b>	<b>192</b>	<b>136</b>	<b>164</b>	<b>81</b>	<b>41</b>
Blacks Creek Rural	0	0	0	0	0	0	0	0	0	0	0
Dry Creek Rural	0	0	0	0	0	0	0	0	0	2	10
East Foothills Rural	0	0	0	0	0	0	0	2	0	0	0
Foothills Rural	0	0	0	0	0	0	0	0	0	0	0
Northwest Rural	0	0	0	0	0	0	0	0	0	0	0
Southeast Rural	0	0	0	0	0	0	0	0	0	0	0
Southwest Rural	0	0	0	0	0	0	0	0	0	0	0
Ten Mile Creek Rural	0	0	0	0	0	0	0	0	0	0	0
West Foothills	0	0	0	0	0	0	0	0	0	0	0
<b>Rural Area Subtotal</b>	<b>0</b>	<b>0</b>	<b>0</b>	<b>0</b>	<b>0</b>	<b>0</b>	<b>0</b>	<b>2</b>	<b>0</b>	<b>2</b>	<b>10</b>
<b>Total</b>	<b>34</b>	<b>290</b>	<b>518</b>	<b>734</b>	<b>2,066</b>	<b>1,147</b>	<b>1,386</b>	<b>1,621</b>	<b>2,142</b>	<b>2,468</b>	<b>1,312</b>

<sup>5</sup> Negative numbers represent residential unit demolitions.

Table 12: New Manufactured/Mobile Home Residential Units by Demographic Area, Ada County, 2010 - 2020<sup>6</sup>

Demographic Area	2010	2011	2012	2013	2014	2015	2016	2017	2018	2019	2020
Airport	0	0	0	0	0	0	0	0	0	0	0
Central Bench	5	0	26	26	2	0	6	2	264	4	53
Downtown Boise	0	56	0	-8	2	54	239	130	226	315	277
East Columbia	0	0	0	0	0	0	1	0	0	0	0
East End	0	0	0	68	0	28	0	21	0	237	0
Foothills	0	0	0	0	0	0	12	2	0	8	0
North End	0	0	-2	2	0	0	2	0	0	32	35
Northwest	1	0	0	0	182	126	261	52	2	42	14
South Downtown	0	0	0	0	543	0	0	0	0	0	0
Southeast	0	0	3	13	0	299	220	98	2	2	6
Southeast--Barber Valley	0	0	0	0	285	0	74	29	49	27	69
Southwest	10	0	154	84	114	6	4	202	28	2	101
West Bench	18	6	64	56	236	204	111	115	72	453	72
<b>Boise Area Subtotal</b>	<b>34</b>	<b>62</b>	<b>245</b>	<b>241</b>	<b>1,364</b>	<b>717</b>	<b>930</b>	<b>651</b>	<b>643</b>	<b>1,122</b>	<b>627</b>
Downtown	0	0	0	0	0	0	0	28	0	102	4
East	0	0	128	104	248	4	0	134	374	240	46
North	0	0	0	36	88	92	0	280	0	15	14
Northeast	0	170	0	0	8	0	122	0	157	71	32
Northwest	0	0	0	0	0	0	0	0	0	0	0
Southeast	0	48	0	298	260	0	0	0	60	177	14
Southwest	0	0	0	0	0	190	0	64	336	48	72
West	0	8	144	36	0	128	138	260	376	150	452
<b>Meridian Area Subtotal</b>	<b>0</b>	<b>226</b>	<b>272</b>	<b>474</b>	<b>604</b>	<b>414</b>	<b>260</b>	<b>766</b>	<b>1,303</b>	<b>803</b>	<b>634</b>
Central	0	0	1	0	0	0	4	48	0	133	0
Floating Feather	0	0	0	0	0	0	0	0	0	0	0
Eagle Island	0	0	0	0	0	0	0	18	32	20	0
Eagle/Star	0	0	0	0	0	0	0	0	0	307	0
South River	0	0	0	0	0	0	0	0	0	0	0
State Corridor	0	0	0	17	96	16	0	0	0	0	0
<b>Eagle Area Subtotal</b>	<b>0</b>	<b>0</b>	<b>1</b>	<b>17</b>	<b>96</b>	<b>16</b>	<b>4</b>	<b>66</b>	<b>32</b>	<b>460</b>	<b>0</b>
Garden City	0	2	0	0	2	0	143	32	68	25	29
Kuna	0	0	0	0	0	0	12	104	96	56	12
Star	0	0	0	2	0	0	37	0	0	0	0
<b>Other City Subtotal</b>	<b>0</b>	<b>2</b>	<b>0</b>	<b>2</b>	<b>2</b>	<b>0</b>	<b>192</b>	<b>136</b>	<b>164</b>	<b>81</b>	<b>41</b>
Blacks Creek Rural	0	0	0	0	0	0	0	0	0	0	0
Dry Creek Rural	0	0	0	0	0	0	0	0	0	2	10
East Foothills Rural	0	0	0	0	0	0	0	2	0	0	0
Foothills Rural	0	0	0	0	0	0	0	0	0	0	0
Northwest Rural	0	0	0	0	0	0	0	0	0	0	0
Southeast Rural	0	0	0	0	0	0	0	0	0	0	0
Southwest Rural	0	0	0	0	0	0	0	0	0	0	0
Ten Mile Creek Rural	0	0	0	0	0	0	0	0	0	0	0
West Foothills	0	0	0	0	0	0	0	0	0	0	0
<b>Rural Area Subtotal</b>	<b>0</b>	<b>0</b>	<b>0</b>	<b>0</b>	<b>0</b>	<b>0</b>	<b>0</b>	<b>2</b>	<b>0</b>	<b>2</b>	<b>10</b>
<b>Total</b>	<b>34</b>	<b>290</b>	<b>518</b>	<b>734</b>	<b>2,066</b>	<b>1,147</b>	<b>1,386</b>	<b>1,621</b>	<b>2,142</b>	<b>2,468</b>	<b>1,312</b>

<sup>6</sup> Negative numbers represent residential unit demolitions.

Table 13: New Single-Family Residential Units by Demographic Area, Canyon County, 2010 - 2020<sup>7</sup>

Demographic Area	2010	2011	2012	2013	2014	2015	2016	2017	2018	2019	2020
Central	2	1	6	4	2	3	6	2	5	17	3
Downtown	-1	0	-1	-3	-2	-3	1	-8	-5	0	-3
Northeast	59	19	101	156	112	190	191	195	174	290	313
South	41	15	87	144	155	199	290	191	328	315	354
West	-1	2	1	9	8	8	17	18	2	22	18
Caldwell Area Subtotal	100	37	194	310	275	397	505	398	504	644	685
Downtown	-1	0	0	1	0	-2	1	1	-1	0	0
East	5	11	8	24	18	12	14	23	24	65	45
North	40	24	57	53	51	63	66	100	187	365	521
South	6	14	22	42	69	92	115	172	191	192	123
West	45	29	94	142	127	147	153	155	191	276	161
Nampa Area Subtotal	95	78	181	262	265	312	349	451	592	898	850
Greenleaf	1	0	0	2	0	0	1	2	2	3	3
Melba	3	0	1	0	0	0	1	7	5	6	8
Middleton	30	26	78	151	149	121	123	198	169	215	204
Notus	1	0	0	0	1	0	2	5	1	1	0
Parma	1	2	-1	5	2	4	0	4	5	-3	4
Wilder	0	1	0	1	1	11	19	23	13	5	2
Other City Subtotal	36	29	78	159	153	136	146	239	195	227	221
Lake Lowell Rural	17	12	35	63	68	76	114	143	194	235	379
Northeast Rural	5	4	11	31	39	44	36	46	49	58	69
Northwest Rural	1	1	3	4	8	8	8	17	21	27	26
South Rural	6	7	15	28	26	20	36	47	33	50	63
West Rural	9	9	12	20	18	32	56	53	72	69	79
West Star	3	1	6	11	10	16	21	34	6	10	10
Rural Area Subtotal	41	34	82	157	169	196	271	340	375	449	626
Total	272	178	535	888	862	1,041	1,271	1,428	1,666	2,218	2,382

<sup>7</sup> Negative numbers represent residential unit demolitions.

Table 14: New Multi-Family Residential Units by Demographic Area, Canyon County, 2010 - 2020<sup>8</sup>

Demographic Area	2010	2011	2012	2013	2014	2015	2016	2017	2018	2019	2020
Central	0	0	8	0	8	0	2	-1	0	0	20
Downtown	48	0	3	0	0	0	2	0	0	30	54
Northeast	1	0	5	0	0	0	0	40	72	50	96
South	0	0	0	0	4	0	0	8	32	64	24
West	0	0	0	0	0	0	0	0	4	0	0
<b>Caldwell Area Subtotal</b>	<b>49</b>	<b>0</b>	<b>16</b>	<b>0</b>	<b>12</b>	<b>0</b>	<b>4</b>	<b>47</b>	<b>108</b>	<b>144</b>	<b>194</b>
Downtown	2	0	0	0	2	2	0	-2	54	0	4
East	3	3	39	0	58	0	290	5	18	18	45
North	8	68	57	48	48	0	100	0	72	434	193
South	0	0	1	0	-6	24	0	124	72	149	154
West	3	76	120	0	3	0	66	148	61	62	160
<b>Nampa Area Subtotal</b>	<b>16</b>	<b>147</b>	<b>217</b>	<b>48</b>	<b>105</b>	<b>26</b>	<b>456</b>	<b>275</b>	<b>277</b>	<b>663</b>	<b>556</b>
Greenleaf	0	0	0	0	0	0	0	0	0	0	0
Melba	0	0	0	0	0	0	0	0	0	0	0
Middleton	0	0	0	0	0	0	0	0	0	0	0
Notus	0	0	0	0	0	0	0	0	0	0	0
Parma	0	0	1	0	0	0	0	0	0	0	0
Wilder	0	0	0	0	0	0	0	0	6	0	0
<b>Other City Subtotal</b>	<b>0</b>	<b>0</b>	<b>1</b>	<b>0</b>	<b>0</b>	<b>0</b>	<b>0</b>	<b>0</b>	<b>6</b>	<b>0</b>	<b>0</b>
Lake Lowell Rural	0	0	0	0	0	0	0	0	0	0	0
Northeast Rural	0	0	0	0	0	0	0	0	0	0	0
Northwest Rural	0	0	1	0	0	0	0	0	0	0	0
South Rural	0	0	0	0	0	0	0	0	0	0	0
West Rural	0	0	0	0	0	0	0	0	0	0	0
West Star	0	0	0	0	0	0	0	0	0	0	0
<b>Rural Area Subtotal</b>	<b>0</b>	<b>0</b>	<b>1</b>	<b>0</b>	<b>0</b>	<b>0</b>	<b>0</b>	<b>0</b>	<b>0</b>	<b>0</b>	<b>0</b>
<b>Total</b>	<b>65</b>	<b>147</b>	<b>235</b>	<b>48</b>	<b>117</b>	<b>26</b>	<b>460</b>	<b>322</b>	<b>391</b>	<b>807</b>	<b>750</b>

<sup>8</sup> Negative numbers represent residential unit demolitions.

Table 15: New Manufactured/Mobile Home Residential Units by Demographic Area, Canyon County, 2010 - 2020<sup>9</sup>

Demographic Area	2010	2011	2012	2013	2014	2015	2016	2017	2018	2019	2020
Central	1	2	0	0	0	0	3	1	1	2	0
Downtown	1	1	0	0	2	0	0	0	0	0	0
Northeast	22	24	0	0	15	1	10	5	2	7	3
South	0	0	0	0	6	2	0	2	4	4	2
West	0	0	0	0	-1	0	4	4	2	3	0
Caldwell Area Subtotal	24	27	0	0	22	3	17	12	9	16	5
Downtown	0	0	0	0	1	0	0	0	0	1	0
East	12	5	0	0	1	1	10	8	4	3	7
North	0	0	0	0	4	0	1	1	0	0	3
South	0	0	0	0	0	1	0	2	4	1	1
West	4	1	0	-1	8	0	8	5	6	4	10
Nampa Area Subtotal	16	6	0	-1	14	2	19	16	14	9	21
Greenleaf	0	0	0	0	1	0	1	2	1	0	1
Melba	1	0	0	0	0	1	0	1	0	0	2
Middleton	0	0	0	0	1	1	2	3	1	4	0
Notus	0	0	0	0	0	0	0	0	0	1	0
Parma	1	2	0	0	0	0	1	3	1	2	2
Wilder	0	0	0	0	0	1	0	1	1	0	0
Other City Subtotal	2	2	0	0	2	3	4	10	4	7	5
Lake Lowell Rural	0	0	0	0	0	1	0	0	0	3	0
Northeast Rural	1	0	0	0	4	2	4	5	3	6	3
Northwest Rural	3	1	0	0	7	2	4	6	4	3	9
South Rural	1	0	0	0	4	5	9	9	7	13	7
West Rural	2	0	0	0	7	3	5	5	14	6	11
West Star	0	0	0	0	1	0	1	0	1	-1	1
Rural Area Subtotal	7	1	0	0	23	13	23	25	29	30	31
Total	49	36	0	-1	61	21	63	63	56	62	62

<sup>9</sup> Negative numbers represent residential unit demolitions.



Table 16: Residential Additions by City Limits, Ada County, 2017- 2020<sup>10</sup>

CITY	2017	2018	2019	2020
Boise	60	162	89	35
Eagle	32	21	25	8
Garden City	6	4	9	30
Kuna	4	13	5	1
Meridian	44	34	45	6
Star	6	16	5	47
Unincorporated Ada County	29	33	61	7
Ada County Total	152	250	178	127

Table 17: Residential Additions by City Limits, Canyon County, 2017- 2020<sup>9</sup>

CITY	2017	2018	2019	2020
Caldwell	63	33	61	8
Greenleaf	0	1	0	2
Melba	0	1	0	0
Middleton	5	3	2	9
Nampa	18	22	32	32
Notus	0	0	0	0
Parma	1	1	0	0
Star	0	0	0	0
Wilder	0	0	0	0
Unincorporated Canyon County	50	60	60	56
Canyon County Total	137	121	155	107

<sup>10</sup> Additions refer to additional square footage to an existing single-family dwelling.