

# **Environmental Justice Plan**

**Community Planning Association of Southwest Idaho  
(COMPASS)**

**Title VI Coordinator  
Megan Larsen, Director of Operations  
COMPASS  
700 NE 2<sup>nd</sup> Street, Suite 200  
Meridian, ID 83642**

**March 2022**

This environmental justice plan has been prepared to address the Community Planning Association of Southwest Idaho's (COMPASS') responsibilities as a recipient of federal financial assistance to identify and address the effects of all programs, policies, and activities on minority and low-income populations, per Executive Order 12898, "Federal Actions to Address Environmental Justice in Minority Populations and Low-Income Populations."<sup>1</sup>

The plan has been prepared in accordance with Title VI of the Civil Rights Act of 1964, 42 U.S.C. 2000d, et seq., and its implementing regulations, which state that "no person shall on the ground of race, color, or national origin, be excluded from participation in, be denied the benefits of, or be subjected to discrimination under any program or activity receiving federal financial assistance<sup>2</sup>."

Executive Order 12898 focuses federal attention on the environmental and human health effects of federal actions on minority and low-income populations with the goal of achieving environmental protection for all communities. It directs federal agencies and recipients of federal funding to identify and address disproportionately high and adverse human health or environmental effects of their actions on minority and low-income populations, to the greatest extent practicable and permitted by law.

The order also directs each agency to develop a strategy for implementing environmental justice. The order is intended to promote nondiscrimination in federal programs that affect human health and the environment, as well as provide minority and low-income communities with access to public information and public participation opportunities.

Executive Order 12898 provides the following guiding principles:

- To avoid, minimize, or mitigate disproportionately high and adverse human health and environmental effects, including social and economic effects, on minority populations and low-income populations.
- To ensure the full and fair participation by all potentially affected communities in the transportation decision-making process.
- To prevent the denial of, reduction in, or significant delay in the receipt of benefits by minority and low-income populations.

Aligning with these principles, COMPASS' goal is to distribute the impacts and benefits of projects and programs receiving federal financial assistance equitably. To achieve that goal, COMPASS will identify, engage, and address the needs of all populations, including minority and low-income populations, in its planning, programming, and outreach processes.

The COMPASS planning area encompasses Ada and Canyon Counties in southwest Idaho. Table 1 provides a snapshot of demographic characteristics for Ada and Canyon Counties, as retrieved from the US Environmental Protection Agency's EJSCREEN tool. Additional demographic characteristics can be found in the Appendix.

---

<sup>1</sup> <https://www.archives.gov/files/federal-register/executive-orders/pdf/12898.pdf>

<sup>2</sup> <https://www.justice.gov/crt/title-vi-1964-civil-rights-act>

Table 1. Select demographic characteristics of Ada and Canyon Counties  
(EJSCREEN, accessed 2/18/21)

	<b>Ada County</b>	<b>Canyon County</b>	<b>State Average</b>
<b>Percent minority<sup>1</sup></b>	15%	29%	18%
<b>Percent low income households<sup>2</sup></b>	26%	44%	36%
<b>Percent linguistically isolated households<sup>3</sup></b>	2%	3%	2%
<b>Demographic index<sup>4</sup></b>	21%	37%	27%

<sup>1</sup> Percent minority as a fraction of population, where minority is defined as all but Non-Hispanic White Alone. Calculated from the Census Bureau's American Community Survey five-year summary estimates.

<sup>2</sup> Percent of individuals whose ratio of household income to poverty level in the past 12 months was less than 2 (as a fraction of individuals for whom ratio was determined). Calculated from the Census Bureau's American Community Survey five-year summary estimates.

<sup>3</sup> Percent of households in which no one age 14 and over speaks English "very well" or speaks English only (as a fraction of households). Calculated from the Census Bureau's American Community Survey five-year summary estimates.

<sup>4</sup> The Demographic Index in EJSCREEN is a combination of percent low-income and percent minority, the two demographic factors that were explicitly named in Executive Order 12898 on Environmental Justice. For each Census block group, these two numbers are simply averaged together. The formula is as follows: Demographic Index = (% minority + % low-income) / 2. Calculated from the Census Bureau's American Community Survey five-year summary estimates.

Definitions from "Glossary of EJSCREEN Terms," <https://www.epa.gov/ejscreen/glossary-ejscreen-terms>

## Addressing Environmental Justice

COMPASS addresses environmental justice in its planning and programming (allocating federal funding) and related public outreach processes.

### Planning and Programming

As a planning agency, COMPASS locates minority and low-income populations that may be impacted by transportation planning and programming and takes environmental justice concerns into consideration in the transportation planning process.

When applying for federal funding, project applicants are asked to indicate if the proposed project is in an identified environmental justice consideration area (minority, low income, or economically distressed). This information is used to inform the project selection process.

In addition, COMPASS uses population data to consider minority and low income populations and the spatial relationship of population locations with transportation projects, including roadway, alternative transportation, and public transportation investments. Environmental justice consideration areas are mapped and overlain with projects in the transportation improvement program and the long-range transportation plan to ensure that transportation projects are distributed in a way that best meets the needs of all populations in the planning area, including minority and low-income populations. COMPASS also uses the map and other demographic data to help ensure that residents in environmental justice consideration areas are not carrying an undue burden as a result of programmed transportation projects. Figure 1 shows a sample environmental justice base map for Ada and Canyon Counties.

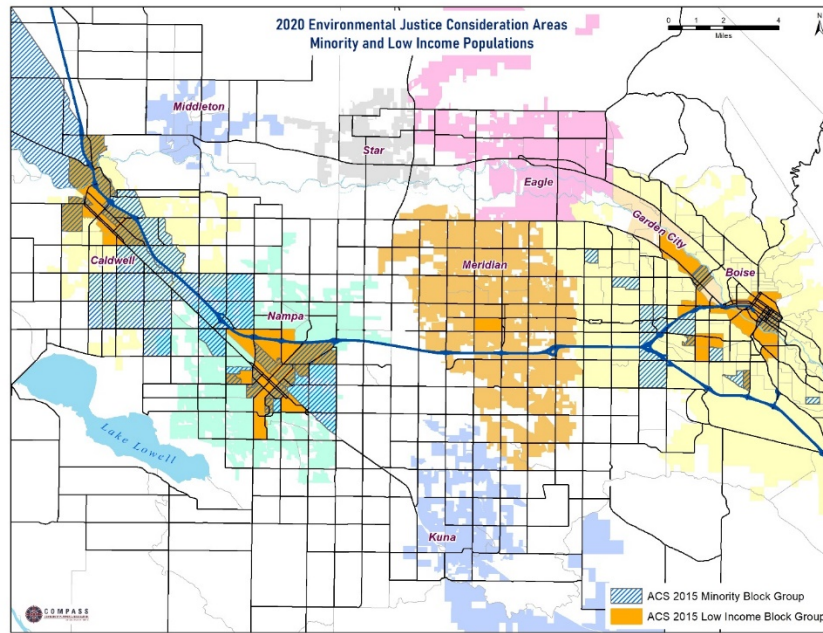


Figure 1. Sample Environmental Justice Consideration Area Map

COMPASS also uses a performance-based planning tool and process to identify the societal return-on-investment of transportation projects (Figure 2). This tool considers several criteria that impact minority and low-income populations, such as evaluating the impact of a transportation investment on access to employment for persons living in environmental justice consideration areas. It also considers metrics for the entire region on issues important for serving environmental justice populations, such as bicycle and pedestrian level of traffic stress, employment accessibility by bus, population and employment near bus, and bike and pedestrian access to parks, as well as issues that can have a disproportionately high negative impact on minority and low-income populations, such as air and noise pollution. These criteria were developed in consultation with a broad stakeholder group, including those that serve minority and low-income populations directly for housing, health care, and transportation. One output of the performance-based planning tool is a map showing return-on-investment across the region for potential transportation investments (Figure 3). Using the map, COMPASS can compare the impact of potential investments in environmental justice consideration areas against other parts of the region.

In addition, COMPASS uses a suitability analysis to ensure that the projects proposed for the regional long-range transportation plan avoid, minimize, or mitigate adverse effects on minority and low-income populations. Issues that could affect minority and low income populations are identified and mitigation strategies are developed as needed.

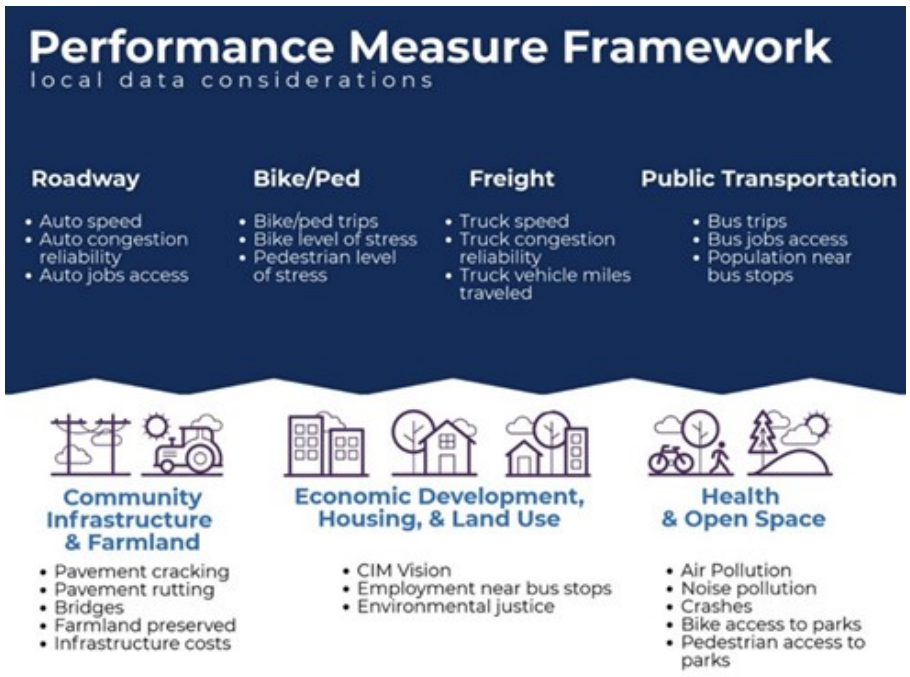


Figure 2. Performance Measure Framework Considerations

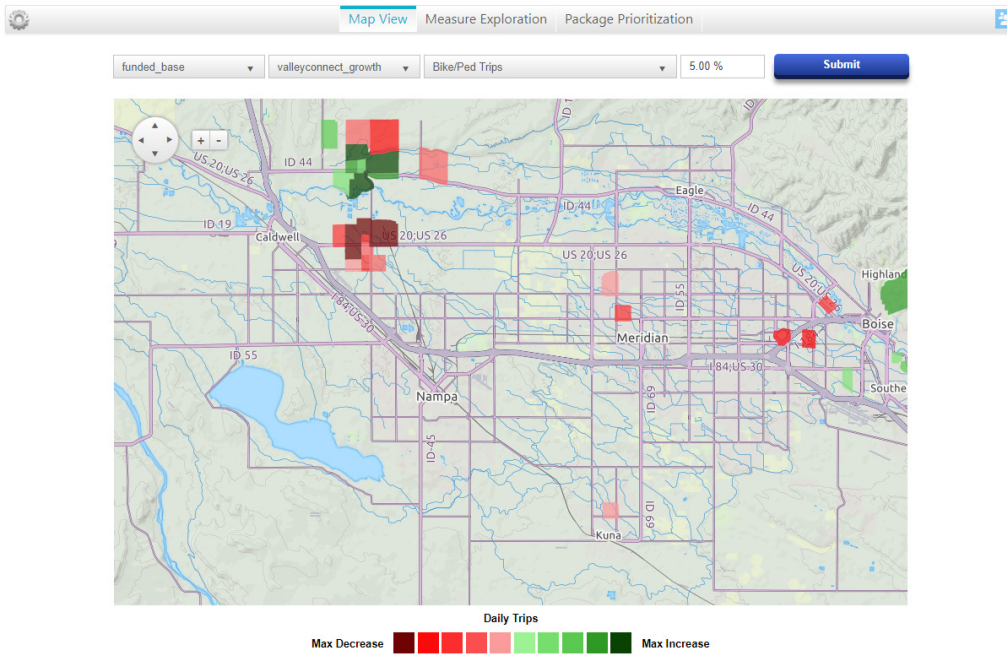


Figure 3. Sample Map Output from Performance Measure Framework Tool

## Communication and Participation

COMPASS strives to ensure all residents of Ada and Canyon Counties have equitable opportunities to be involved. COMPASS public participation processes are outlined in detail in its participation plan, which can be found online in both English and Spanish<sup>3</sup>. Paper copies are available upon request.

The participation plan is developed in cooperation with COMPASS' Public Participation Workgroup, comprised of a cross section of members of the public, a journalist, and communication staff from COMPASS member agencies. The workgroup helps COMPASS ensure it is reaching out to all residents in its planning area.

The participation plan outlines how individuals can engage with COMPASS and how the agency meets or exceeds all federal participation requirements. The plan includes strategies COMPASS uses to ensure traditionally underrepresented communities have the opportunity to be involved with COMPASS in a way that is convenient and comfortable for them, such as working with trusted partners, translating materials, and meeting with groups and individuals at times and venues that meet their needs and schedules.

COMPASS does not believe in a "one size fits all" approach, but rather targets its outreach activities based on needs of the stakeholders and the types of topics being discussed. COMPASS develops a "stakeholder outreach matrix" for plans or projects where COMPASS will be seeking public input to identify stakeholder types and primary and secondary ways of reaching those stakeholders. Specific techniques to reach out to unique populations are described in the matrix for each public involvement opportunity. This allows COMPASS to tailor its outreach methods depending on the topic(s) of discussion, impacted audiences, timing, and more.

In addition, COMPASS uses its environmental justice consideration areas map (see Figure 1) when selecting locations to post materials or host public meetings to ensure minority and low-income populations have adequate and appropriate means to be engaged.

The COMPASS website has a language translation feature, where the entire site can be translated into a multitude of languages at the click of the mouse. The regional long-range transportation plan, *Communities in Motion*, is an online plan and also has a translation option. COMPASS publishes many of its other materials, including surveys and comment forms and related promotional materials, in Spanish and offers additional languages or formats upon request.

The agency reaches out to members, leaders, and liaisons for traditionally underrepresented populations, including minority and low-income, through email, paid media (e.g., Spanish language radio and social media), social media, and trusted partners, including providing information in locations such as food banks, transit hubs, and libraries, that are frequently by low-income and/or minority populations. This is particularly important, as these populations are less likely to have internet access or be able to travel to a meeting to receive information in other formats.

COMPASS offers assistance to reduce barriers to participation on the COMPASS website and public comment materials. Types of assistance that COMPASS will provide upon request include

---

<sup>3</sup> <https://www.compassidaho.org/people/publicinvolvement.htm>

transportation assistance (e.g., taxi fees), interpreters/translation, childcare, and assistance in making public comments (e.g., dictating comments orally for a COMPASS staff person to record).

COMPASS requests demographic information on its surveys, public comment forms, and meeting sign-in sheets, and uses that information to compare responses against regional demographic data. Those comparisons are used for planning and programming to ensure that the concerns and needs of minority and low-income populations are considered and addressed and also to assist in continually improving outreach to all populations.

In addition to formal public participation opportunities, COMPASS also receives unsolicited questions and comments. Those questions and comments provide insight into additional needs and issues, including those of minority and low-income populations, and are used to help inform and improve COMPASS' planning, programming, and outreach processes and results.

## **Appendix**

### **EJSCREEN American Community Survey Summary Reports**

**Ada County (Pages 9 - 11)**

**Canyon County (Pages 12 - 14)**





Location: Ada County  
 Ring (buffer): 0-mile radius  
 Description:

Summary of ACS Estimates		2014 - 2018
Population		446,052
Population Density (per sq. mile)		424
People of Color Population		67,221
% People of Color Population		15%
Households		168,741
Housing Units		176,693
Housing Units Built Before 1950		11,576
Per Capita Income		33,352
Land Area (sq. miles) (Source: SF1)		1,052.01
% Land Area		99%
Water Area (sq. miles) (Source: SF1)		8.56
% Water Area		1%

	2014 - 2018 ACS Estimates	Percent	MOE (±)
<b>Population by Race</b>			
Total	446,052	100%	0
Population Reporting One Race	432,682	97%	4,589
White	404,644	91%	1,379
Black	6,204	1%	620
American Indian	2,525	1%	520
Asian	11,956	3%	794
Pacific Islander	908	0%	228
Some Other Race	6,445	1%	1,048
Population Reporting Two or More Races	13,370	3%	1,183
Total Hispanic Population	35,838	8%	0
Total Non-Hispanic Population	410,214		
White Alone	378,831	85%	204
Black Alone	5,682	1%	563
American Indian Alone	1,805	0%	420
Non-Hispanic Asian Alone	11,694	3%	784
Pacific Islander Alone	713	0%	177
Other Race Alone	480	0%	216
Two or More Races Alone	11,009	2%	1,068
<b>Population by Sex</b>			
Male	223,367	50%	227
Female	222,685	50%	227
<b>Population by Age</b>			
Age 0-4	26,579	6%	155
Age 0-17	109,147	24%	1,779
Age 18+	336,905	76%	3,020
Age 65+	60,097	13%	1,562

**Data Note:** Detail may not sum to totals due to rounding. Hispanic population can be of any race.  
 N/A means not available. **Source:** U.S. Census Bureau, American Community Survey (ACS) 2014 - 2018.



Location: Ada County  
 Ring (buffer): 0-mile radius  
 Description:

	2014 - 2018 ACS Estimates	Percent	MOE (±)
<b>Population 25+ by Educational Attainment</b>			
Total	298,286	100%	251
Less than 9th Grade	4,231	1%	549
9th - 12th Grade, No Diploma	10,266	3%	936
High School Graduate	68,554	23%	2,273
Some College, No Degree	102,595	34%	2,704
Associate Degree	28,243	9%	1,414
Bachelor's Degree or more	112,640	38%	2,488
<b>Population Age 5+ Years by Ability to Speak English</b>			
Total	419,473	100%	151
Speak only English	383,831	92%	1,871
Non-English at Home <sup>1+2+3+4</sup>	35,642	8%	1,974
<sup>1</sup> Speak English "very well"	23,258	6%	1,578
<sup>2</sup> Speak English "well"	7,061	2%	824
<sup>3</sup> Speak English "not well"	4,042	1%	699
<sup>4</sup> Speak English "not at all"	1,281	0%	331
<sup>3+4</sup> Speak English "less than well"	5,323	1%	773
<sup>2+3+4</sup> Speak English "less than very well"	12,384	3%	1,130
<b>Linguistically Isolated Households*</b>			
Total	2,544	100%	433
Speak Spanish	1,059	42%	300
Speak Other Indo-European Languages	557	22%	189
Speak Asian-Pacific Island Languages	534	21%	179
Speak Other Languages	394	15%	172
<b>Households by Household Income</b>			
Household Income Base	168,741	100%	1,097
< \$15,000	16,835	10%	1,039
\$15,000 - \$25,000	14,749	9%	1,001
\$25,000 - \$50,000	35,055	21%	1,559
\$50,000 - \$75,000	32,274	19%	1,395
\$75,000 +	69,828	41%	2,185
<b>Occupied Housing Units by Tenure</b>			
Total	168,741	100%	1,097
Owner Occupied	115,369	68%	1,448
Renter Occupied	53,372	32%	1,302
<b>Employed Population Age 16+ Years</b>			
Total	350,351	100%	532
In Labor Force	231,159	66%	2,462
Civilian Unemployed in Labor Force	8,847	3%	980
Not In Labor Force	119,192	34%	2,501

Data Note: Detail may not sum to totals due to rounding. Hispanic population can be of any race.

N/A means not available. Source: U.S. Census Bureau, American Community Survey (ACS)

\*Households in which no one 14 and over speaks English "very well" or speaks English only.



Location: Ada County  
 Ring (buffer): 0-mile radius  
 Description:

	2014 - 2018 ACS Estimates	Percent	MOE (±)
<b>Population by Language Spoken at Home*</b>			
Total (persons age 5 and above)	419,473	100%	151
English	383,831	92%	2,122
Spanish	16,933	4%	1,459
French	1,086	0%	498
French Creole	N/A	N/A	N/A
Italian	N/A	N/A	N/A
Portuguese	N/A	N/A	N/A
German	1,458	0%	350
Yiddish	N/A	N/A	N/A
Other West Germanic	N/A	N/A	N/A
Scandinavian	N/A	N/A	N/A
Greek	N/A	N/A	N/A
Russian	N/A	N/A	N/A
Polish	N/A	N/A	N/A
Serbo-Croatian	N/A	N/A	N/A
Other Slavic	N/A	N/A	N/A
Armenian	N/A	N/A	N/A
Persian	N/A	N/A	N/A
Gujarathi	N/A	N/A	N/A
Hindi	N/A	N/A	N/A
Urdu	N/A	N/A	N/A
Other Indic	N/A	N/A	N/A
Other Indo-European	2,792	1%	644
Chinese	2,469	1%	570
Japanese	N/A	N/A	N/A
Korean	379	0%	299
Mon-Khmer, Cambodian	N/A	N/A	N/A
Hmong	N/A	N/A	N/A
Thai	N/A	N/A	N/A
Laotian	N/A	N/A	N/A
Vietnamese	1,230	0%	560
Other Asian	2,544	1%	624
Tagalog	632	0%	272
Other Pacific Island	N/A	N/A	N/A
Navajo	N/A	N/A	N/A
Other Native American	N/A	N/A	N/A
Hungarian	N/A	N/A	N/A
Arabic	1,957	0%	753
Hebrew	N/A	N/A	N/A
African	N/A	N/A	N/A
Other and non-specified	1,434	0%	545
Total Non-English	35,642	8%	2,127

**Data Note:** Detail may not sum to totals due to rounding. Hispanic population can be of any race.  
 N/A means not available. **Source:** U.S. Census Bureau, American Community Survey (ACS) 2014 - 2018.  
 \*Population by Language Spoken at Home is available at the census tract summary level and up.



Location: Canyon County  
 Ring (buffer): 0-mile radius  
 Description:

Summary of ACS Estimates		2014 - 2018
Population		212,230
Population Density (per sq. mile)		362
People of Color Population		62,395
% People of Color Population		29%
Households		70,847
Housing Units		74,650
Housing Units Built Before 1950		7,381
Per Capita Income		20,807
Land Area (sq. miles) (Source: SF1)		587.04
% Land Area		97%
Water Area (sq. miles) (Source: SF1)		16.65
% Water Area		3%

	2014 - 2018 ACS Estimates	Percent	MOE (±)
<b>Population by Race</b>			
Total	212,230	100%	0
Population Reporting One Race	204,466	96%	5,157
White	180,454	85%	1,986
Black	715	0%	196
American Indian	2,425	1%	499
Asian	1,839	1%	291
Pacific Islander	497	0%	150
Some Other Race	18,536	9%	2,035
Population Reporting Two or More Races	7,764	4%	836
Total Hispanic Population	53,357	25%	0
Total Non-Hispanic Population	158,873		
White Alone	149,835	71%	78
Black Alone	712	0%	197
American Indian Alone	1,415	1%	273
Non-Hispanic Asian Alone	1,755	1%	273
Pacific Islander Alone	476	0%	144
Other Race Alone	68	0%	56
Two or More Races Alone	4,612	2%	450
<b>Population by Sex</b>			
Male	104,902	49%	240
Female	107,328	51%	240
<b>Population by Age</b>			
Age 0-4	16,385	8%	195
Age 0-17	62,189	29%	1,081
Age 18+	150,041	71%	1,886
Age 65+	27,959	13%	977

**Data Note:** Detail may not sum to totals due to rounding. Hispanic population can be of any race.  
 N/A means not available. **Source:** U.S. Census Bureau, American Community Survey (ACS) 2014 - 2018.





Location: Canyon County  
 Ring (buffer): 0-mile radius  
 Description:

	2014 - 2018 ACS Estimates	Percent	MOE (±)
<b>Population 25+ by Educational Attainment</b>			
Total	129,864	100%	224
Less than 9th Grade	8,933	7%	827
9th - 12th Grade, No Diploma	11,056	9%	878
High School Graduate	41,573	32%	1,409
Some College, No Degree	44,561	34%	1,804
Associate Degree	10,172	8%	825
Bachelor's Degree or more	23,741	18%	1,216
<b>Population Age 5+ Years by Ability to Speak English</b>			
Total	195,845	100%	133
Speak only English	159,561	81%	1,519
Non-English at Home <sup>1+2+3+4</sup>	36,284	19%	1,489
<sup>1</sup> Speak English "very well"	22,329	11%	1,404
<sup>2</sup> Speak English "well"	6,173	3%	731
<sup>3</sup> Speak English "not well"	4,893	2%	678
<sup>4</sup> Speak English "not at all"	2,889	1%	568
<sup>3+4</sup> Speak English "less than well"	7,782	4%	884
<sup>2+3+4</sup> Speak English "less than very well"	13,955	7%	1,147
<b>Linguistically Isolated Households*</b>			
Total	2,158	100%	377
Speak Spanish	1,985	92%	359
Speak Other Indo-European Languages	105	5%	96
Speak Asian-Pacific Island Languages	31	1%	32
Speak Other Languages	37	2%	53
<b>Households by Household Income</b>			
Household Income Base	70,847	100%	568
< \$15,000	8,216	12%	689
\$15,000 - \$25,000	6,993	10%	540
\$25,000 - \$50,000	20,769	29%	1,109
\$50,000 - \$75,000	15,559	22%	924
\$75,000 +	19,310	27%	1,068
<b>Occupied Housing Units by Tenure</b>			
Total	70,847	100%	568
Owner Occupied	48,290	68%	1,051
Renter Occupied	22,557	32%	933
<b>Employed Population Age 16+ Years</b>			
Total	156,717	100%	514
In Labor Force	98,216	63%	1,513
Civilian Unemployed in Labor Force	6,349	4%	722
Not In Labor Force	58,501	37%	1,454

**Data Note:** Detail may not sum to totals due to rounding. Hispanic population can be of any race.

N/A means not available. Source: U.S. Census Bureau, American Community Survey (ACS)

\*Households in which no one 14 and over speaks English "very well" or speaks English only.

Location: Canyon County  
 Ring (buffer): 0-mile radius  
 Description:

	2014 - 2018 ACS Estimates	Percent	MOE (±)
<b>Population by Language Spoken at Home*</b>			
Total (persons age 5 and above)	195,845	100%	133
English	159,561	81%	1,908
Spanish	32,828	17%	1,732
French	339	0%	171
French Creole	N/A	N/A	N/A
Italian	N/A	N/A	N/A
Portuguese	N/A	N/A	N/A
German	382	0%	152
Yiddish	N/A	N/A	N/A
Other West Germanic	N/A	N/A	N/A
Scandinavian	N/A	N/A	N/A
Greek	N/A	N/A	N/A
Russian	N/A	N/A	N/A
Polish	N/A	N/A	N/A
Serbo-Croatian	N/A	N/A	N/A
Other Slavic	N/A	N/A	N/A
Armenian	N/A	N/A	N/A
Persian	N/A	N/A	N/A
Gujarathi	N/A	N/A	N/A
Hindi	N/A	N/A	N/A
Urdu	N/A	N/A	N/A
Other Indic	N/A	N/A	N/A
Other Indo-European	821	0%	392
Chinese	357	0%	236
Japanese	N/A	N/A	N/A
Korean	24	0%	29
Mon-Khmer, Cambodian	N/A	N/A	N/A
Hmong	N/A	N/A	N/A
Thai	N/A	N/A	N/A
Laotian	N/A	N/A	N/A
Vietnamese	35	0%	44
Other Asian	592	0%	281
Tagalog	139	0%	110
Other Pacific Island	N/A	N/A	N/A
Navajo	N/A	N/A	N/A
Other Native American	N/A	N/A	N/A
Hungarian	N/A	N/A	N/A
Arabic	231	0%	234
Hebrew	N/A	N/A	N/A
African	N/A	N/A	N/A
Other and non-specified	117	0%	53
Total Non-English	36,284	19%	1,913

**Data Note:** Detail may not sum to totals due to rounding. Hispanic population can be of any race.  
 N/A means not available. **Source:** U.S. Census Bureau, American Community Survey (ACS) 2014 - 2018.  
 \*Population by Language Spoken at Home is available at the census tract summary level and up.