

Appendices

Appendix A: Key Terms and Definitions

Administrative Assistance (Rural and Intercity): Administrative assistance includes costs that support but are not directly related to system operations. Examples of administrative expenses are -- Facilities and equipment rental, insurance, office supplies, marketing costs, wages and fringe benefits for the project director, secretary, and bookkeeper.

Bicycle Racks or ADA Equipment: Bicycle racks and equipment on the vehicle and equipment that is directly related to providing service to passengers with disabilities.

Capital Assistance (Rural, Intercity, and Elderly and Persons with Disabilities): Capital assistance includes the acquisition and improvement of public transit equipment and facilities needed for an efficient public transportation system. Examples of capital expenses are -- Buses, vans, radios and communications equipment, vehicle rehabilitation, wheelchair lifts and restraints, passenger shelters, operational support such as computer hardware/software and construction or rehabilitation of transit facilities, preventive maintenance, and mobility management.

Connectivity: Connectivity refers to the network's ability to support mobility where it is needed via multi-modes, within and throughout the various networks. The process of describing local, District, and State networks enables the identification of needs and development of connectivity services where they are most needed.

Customer/User: For all stakeholders, the users and the potential users of mobility services and mobility options are the primary customers for all mobility management efforts.

Demand Response: Transit service comprised of passenger cars, vans or buses operating in response to requests from passengers or their agents who then dispatch a vehicle to pick them up and transport them to their destinations. Typically, the vehicle is dispatched to pick up several passengers at different pick-up points before taking them to their respective destinations.

District: A geographic division of the state as utilized by the Idaho Transportation Department for planning and organizational purposes. There are six Districts in Idaho.

DCC: District Coordination Council. The District Coordination Councils are comprised of a diverse group of stakeholders within the District. They are responsible for helping to encourage and foster the development of Local Mobility Management Networks in a coordinated fashion; generate a shared understanding of all customers and their transportation needs; maximize the

utilization of resources, including coordinating vehicle procurement and usage; review grant applications based on local priorities; inform statewide connectivity; and promote mobility

Deviated: Transit service that operates along a fixed alignment or path at generally fixed times, but may "deviate" from the route to collect or drop off passengers who have requested the deviation.

Division: the Idaho Transportation Department's Division of Public Transportation

Efficient: *Efficiency* is an objective measurement of providing the most services possible at the least possible cost. To be efficient and effective, mobility management efforts and entities must balance and coordinate the tension between the two concepts as appropriate to the area they serve.

Effective: Effectiveness is the extent to which mobility management services meet the customers' individual and various needs. Meeting one customer's individual needs effectively may cost more and look very different from meeting the needs of another customer.

FTA: Federal Transit Administration

Fixed: Transit service that operates on fixed routes and schedules regardless of whether a passenger actively requests a vehicle.

FHWA: Federal Highway Administration

Gaps: Differences between services or facilities currently in place versus those that are needed. A gap could exist if there is a need for a mobility service in an area and one does not currently exist. A gap could be physical, e.g. there could be two bike or pedestrian pathways which align and could meet but for which there is a physical gap of a certain distance. Gaps can be identified in the following categories:

- **information and awareness** – existing mobility choices might not be apparent to clients because of an information gap;
- **geographical** – services exist at two geographic locations but not in the corridor between these two locations;
- **temporal** (i.e. time based) - services are available, but not on particular days or times;
- **client** – existing services might limit access to certain ridership groups; and
- **service quality** – there are existing services, but not of a quality or with the amenities that attract ridership.

IMAP: Idaho Mobility and Access Pathways

ITD: Idaho Transportation Department

IWG: Interagency Working Group. A work group of state agencies and organizations established in Section 40-514 Idaho Code to collaborate on identifying and reducing barriers to the coordination of transportation services.

LMMN: Local Mobility Management Network. Local Mobility Management Networks are the foundation of the mobility management network. These Networks exist and develop by virtue of the individuals, stakeholders, and local leadership who establish, coordinate, and provide mobility management services within a meaningful service area.

Meaningful Connections: In order to be considered a meaningful connection to other intercity providers, your schedules must be coordinated with the other intercity service providers.

Mobility: Mobility is the ability of an individual to effectively get where s/he needs to go via the most appropriate means of transportation.

Mobility Management: Mobility management is an eligible capital cost. Mobility management techniques enhance transportation access for populations beyond those served by one agency or organization within a community. For example, a non-profit agency could receive JARC or New Freedom funding to support the administrative costs of sharing services it provides to its own clientele with other low-income individuals and coordinate usage of vehicles with other non-profits, but not the operating costs of the service. Mobility management is intended to build coordination among transportation service providers with the result of expanding the availability of service. Mobility management activities may include:

- Short-term Planning and identifying transit needs, duplication of effort, coordination opportunities, and solutions.
- Regionalize service to make it easier to travel through region
- The promotion, enhancement, and facilitation of access to transportation services including the integration and coordination of services for individuals with disabilities, older adults, and low-income individuals; Support for short term management activities to plan and implement coordinated services;
- The support of State and local coordination policy bodies and councils;
- The operation of transportation brokerages to coordinate providers, funding agencies and customers;
- The provision of coordination services, including employer-oriented Transportation

Management Organizations' and Human Service Organizations' customer-oriented travel navigator systems and neighborhood travel coordination activities such as coordinating individualized travel training and trip planning activities for customers;

- The development and operation of one-stop transportation traveler call centers to coordinate transportation information on all travel modes and to manage eligibility requirements and arrangements for customers among supporting programs; and
- Operational planning for the acquisition of intelligent transportation technologies to help plan and operate coordinated systems inclusive of Geographic Information Systems (GIS) mapping, Global Positioning System technology, coordinated vehicle scheduling, dispatching and monitoring technologies as well as technologies to track costs and billing in a coordinated system and single smart customer payment systems (acquisition of technology is also eligible as a standalone capital expense).

MPO: Metropolitan Planning Organization

Need: a need is a statement describing a desired state or condition of mobility in a local mobility management network. Needs statements should be written without mentioning a particular mobility mode, and should not show a bias towards a particular solution. A need and needs statements can also be written relative to a 'gap' in existing services.

Operating Assistance (Rural and Intercity): Operating assistance includes those costs directly related to system operations. Examples of operating expenses are fuel, vehicle licensing costs, and wages and fringe benefits for drivers and dispatchers.

Paratransit: Transit service comprised of passenger cars, vans or buses operating in response to requests from passengers or their agents who then dispatch a vehicle to pick them up and transport them to their destinations. Typically, the vehicle is dispatched to pick up several passengers at different pick-up points before taking them to their respective destinations.

Performance Measures: criteria and measurements to gauge how efficiently and effectively a mobility provider is delivering service. Performance measures will be reported on a periodic basis and should be detailed enough to allow subsequent mobility planning efforts to determine the value of keeping an existing service.

Preventative Maintenance (Rural and Intercity): includes costs that continue and extend the useful life of public transportation vehicles. Such cost reimbursement must be outlined in the applicant's budget to be reimbursed. Because FTA has allowed an exception to the Generally Accepted Accounting Principles, applicants must specifically and consistently identify these costs in their records. Examples of Preventive Maintenance costs are – oil, tires, vehicle parts and mechanic wages and benefits.

Project: a project is a solution that provides a product or service that is in response to a strategy that has been written to meet a need.

PTAC: Public Transportation Advisory Council. An advisory group established in Section 40-514

Idaho Code and comprised of one appointed representative from each of the six ITD Districts to advise the Idaho Transportation Department on needs and priorities for public transportation in their District.

Purchase of Service: Organizations serving the elderly and persons with disabilities may apply for Section 5310 funds to fund SCRIP or voucher programs, which after a cost/benefit analysis, are cost effective and serve rural areas that are not served or underserved. Funding for Purchase of Service requests will be considered after each district's capital needs are met.

Purchase of Service proposals will be also considered under the Job Access/Reverse Commute or New Freedom programs.

STIP: State Transportation Improvement Program

Strategy: a strategy is a statement that identifies a very high level approach to meeting a need.

There can be multiple strategies defined to meet a need. Multiple needs can be met by a single strategy.

Success Factors: Related to development of strategy statements, success factors are developed by the local networks and indicated what would be expected as the outcome of a successful implementation of a strategy.

Values: core principles within the network regarding quality of life and related goals within the community. Understanding values is a prerequisite for developing and understanding needs.

Unmet Needs: See Gaps.

Appendix B: Transportation Providers

Table 3-1 (Page 1 of 1)
Other Transportation Providers and Funding Agencies in 3C LMMN

Organization	Role in Mobility and Transportation Services							Other Role Description	Counties Served	Days and Hours of Operation
	Provide services	Contract for services	Manage or maintain facilities or infrastructure	Coordinate services	Provide benefits to customers for mobility services	Provide funding for transportation	Other			
PRIVATE, NON-PROFIT										
Friends of Children and Families, Inc.	x								Ada, Elmore Counties	
International Rescue Committee	x			x	x	x			Ada, Canyon Counties	
Marsing Senior Center	x						x	Senior Center	Canyon, Owyhee Counties	M-Th 7 am-2 pm
Senior Solutions	x								Ada County	M-F 8 am-3 pm
St. Mark's Catholic Community	x				x				Ada County	
Tamarack Municipal Association	x	x	x	x					Boise, Valley Counties	M-Su 6 am-11 pm
WITCO	x								Ada, Canyon, Elmore, Gem, Owyhee, Payette, Washington Counties and Malheur, OR	
World Relief Refugee Resettlement Agency						x	x	Train customers how to use public trans.	Ada County	
PRIVATE, FOR-PROFIT										
Cornerstone Transportation LLC.	x	x		x	x				Ada, Bannock, Boise, Canyon, Elmore, Gem, Valley Counties	M-F 6 am-8 pm
Fran's Affordable Ride	x								Ada, Boise, Elmore, Gooding, Owyhee Counties and Owyhee, NV	M 6 am-5 pm, Tu-F 9 am-5 pm, Sa-Su 12 am-11 pm
Northwestern Trailways	x			x					Ada, Boise, Idaho, Latah, Lewis, Nez Perce, Valley Counties and parts of WA	M-Sa 6 am-9 pm
Salt Lake Express	x			x	x				Ada, Bannock, Bingham, Bonneville, Cassia, Clark, Elmore, Fremont, Gooding, Jefferson, Jerome, Madison, Minidoka, Oneida, Power, Twin Falls Counties and parts of MT, WY and UT	24/7

* For the entire service area

Table 3-2 (page 1 of 3)

OTHER TRANSPORTATION PROVIDERS AND FUNDING AGENCIES IN LMMN 3C

Organization	Role in Mobility and Transportation Services							Other Role Description	Counties Served	Days and Hours of Operation
	Provide services	Contract for services	Manage or maintain facilities or infrastructure	Coordinate services	Provide benefits to customers for mobility services	Provide funding for transportation	Other			
PUBLIC										
ACHD Commuteride	x		x					Ridematching, Vanpool	Ada, Boise, Canyon, Elmore, Gem, Payette Counties and Malheur County, OR	
Boise School District		x							Ada County	M-F 5 am-7 pm
Children's Mental Health	x	x		x	x	x			Adams, Canyon, Gem, Owyhee, Payette, Washington Counties and Duck Valley Indian Reservation, NV	
Dept. of Environmental Quality									Ada, Canyon Counties	M-F 7 am-4 pm
Department of Health & Welfare					x				Canyon, Owyhee Counties	
Health and Welfare Resource and Service Navigation				x					Ada, Boise, Elmore, Valley Counties	
HIV Services Clinic / Family Medicine Health Center							x	Budget Line item in Federal Grant	Ada, Adams, Canyon, Gem, Owyhee, Payette, Washington Counties and Malheur, OR	
Idaho Department of Health & Welfare, Region III		x			x	x			Adams, Canyon, Gem, Owyhee, Payette and Washington Counties	
Idaho Commission on Aging						x			Statewide and Cache, UT	
Idaho Department of Health & Welfare - Behavioral Health					x				Statewide	
Idaho Division of Veterans Services		x		x					Ada, Bannock, Latah Counties	
Infant Toddler Program/Region III Department of Health and Welfare				x			x	Help clients become Medicaid transportation eligible	Canyon County	

Table 3-2: OTHER TRANSPORTATION PROVIDERS AND FUNDING AGENCIES IN LMMN 3C (p. 2 of 3)

Organization	Total Annual Passenger Trips*	Percent of Rides by Passenger Group										Total Annual Passenger Trips*	
		Elderly	Disabled	Primary / secondary school students	College/ trade/ continuing Ed Students	Residents living within service area	Tourists	Low income	Medicaid	In a vocational rehab program	Other		Other passenger types
PUBLIC													
ACHD Commuteride	195,518	0	0	0	0	100	0	0	0	0	0		980
Boise School District	2,500,000	0	0	1	0	0	0	0	0	0	0		2,500,000
Children's Mental Health	.	0	0	100	0	0	0	0	0	0	0		.
Dept. of Environmental Quality	40	0	0	0	0	40	0	0	0	0	0		1
Department of Health & Welfare		500
Health and Welfare Resource and Service Navigation
HIV Services Clinic / Family Medicine Health Center	75	.	.	30	Program clients	300
Idaho Department of Health & Welfare, Region III	.	0	20	0	0	0	0	0	70	0	0		.
Idaho Commission on Aging	119,123	100	50	0	0	100	0	75	0	0	0		.
Idaho Department of Health & Welfare - Behavioral Health	10,378	0	100	0	0	0	0	0	0	0	0		345
Idaho Division of Veterans Services	42	68	60	0	0	95	0	75	50	0	0		35
Infant Toddler Program/ Region III Department of Health and Welfare	Occasionally transport clients to necessary	.
PRIVATE, NON-PROFIT													
Friends of Children and Families, Inc.	4,826	0	0	0	0	0	0	0	0	0	100	Pre-school children	320
International Rescue Committee	2,500	10	10	0	0	100	0	100	95	0	0		800
Marsing Senior Center	141	60	1	5	5	20	0	95	45	0	0		55
Senior Solutions	4,864	100	0	0	0	0	0	0	0	0	0		143
St. Mark's Catholic Community	52	50	50	0	0	0	0	0	0	0	0		100
Tamarack Municipal Association
WITCO	30,000	20	100	10	0	100	0	100	80	60	0		300,000
World Relief Refugee Resettlement Agency	2,500	10	4	4	2	0	0	80	80	0	0		2,000
PRIVATE, FOR-PROFIT													
Cornerstone Transportation LLC.		200
Fran's Affordable Ride	700	20	150	1	0	100	20	150	300	0	50	USAF airmen	700
Northwestern Trailways	71,541	20	5	0	2	25	5	25	0	0	0		13,000

Table 3-2: OTHER TRANSPORTATION PROVIDERS AND FUNDING AGENCIES IN LMMN 3C (p. 3 of 3)

Organization	Transportation Services Provided									Number of Vehicles*	Number of Wheelchair-Accessible Vehicles	Total 2009 Revenue	Major Funding Sources
	Fixed Route	Deviated Fixed or Flex Route	Demand Response/Paratransit	Charter	School Bus	Taxicab	Volunteers	Vanpool	Bicycles (Free or Rent)				
PUBLIC													
ACHD Commuteride							x					\$ 1,000,000	Farebox/ Donations
Boise School District				x	x							\$ 7,440,750	State, Property Taxes
Children's Mental Health												\$ -	
Dept. of Environmental Quality	x									1	0	\$ -	carpooling
Department of Health & Welfare												\$ -	
Health and Welfare Resource and Service Navigation												\$ -	
HIV Services Clinic / Family Medicine Health Center												\$ -	
Idaho Department of Health & Welfare, Region III												\$ -	
Idaho Commission on Aging												\$ -	
Idaho Department of Health & Welfare - Behavioral Health												\$ -	
Idaho Division of Veterans Services												\$ -	
Infant Toddler Program/Region III Department of Health and Welfare												\$ -	
PRIVATE, NON-PROFIT													
Friends of Children and Families, Inc.												\$ -	
International Rescue Committee												\$ -	
Marsing Senior Center			x							2		\$ 8,200	Farebox/ Donations, Section 5311, In-kind Match
Senior Solutions	x	x								2		\$ 82,513	Adult and Aging Services, Donations, Grants, State, City
St. Mark's Catholic Community												\$ -	
Tamarack Municipal Association	x			x						5	2	\$ -	
WITCO										7	3	\$ -	
World Relief Refugee Resettlement Agency												\$ -	
PRIVATE, FOR-PROFIT													
Cornerstone Transportation LLC.		x								3	0	\$ -	
Fran's Affordable Ride						x				2		\$ 106	Medicaid
Northwestern Trailways	x			x						6	1	\$ 3,624,546	Charters, farebox, Section 5311(f)
Salt Lake Express	x		x	x								\$ 201,000	Charters, Farebox, Section 5311(f)

* For the entire service area

Table 3-3: OTHER MOBILITY INFRASTRUCTURE AND SUPPORT IN LMMN 3C

Organization	Organization Type	Counties Served	Type of Support Provided
City of Boise	Public	Ada County	Provide funding. Member of VRT
City of Garden City	Public	Ada County	Facilities/infrastructure. Member of VRT
City of Horseshoe Bend	Public	Boise County	Facilities/infrastructure
City of Kuna	Public	Ada County	Member of VRT
City of Middleton	Public	Canyon County	Facilities/infrastructure. Member of VRT
City of Parma	Public	Canyon County	Promoting ACHD Van from Parma. Member of VRT
City of Wilder	Public	Canyon County	Member VRT
Gem County	Public	Gem County	

Table 3-4: Bike and Pedestrian Specific Organizations and Advocacy Groups

Service Category	Organization	Wheel-Chair	Service Area	Base of Operations
Bike/Pedestrian	ACHD Bike/Pedestrian Planning, ADA Advisory Committee		Ada County	Boise
Bike/Pedestrian	Friends of the Weiser Trail		Weiser, Cambridge, Council, Mesa, Tamarack	Weiser
Bike/Pedestrian	Ada County Open Space & Trails		Ada County	Boise
Bike/Pedestrian	Canyon County Parks Dept		Canyon County	Caldwell
Bike/Pedestrian	Nampa Bicycle & Pedestrian Citizens' Advisory Group		Nampa	Nampa
Bike/Pedestrian	Treasure Valley Cycling Alliance		Treasure Valley	Boise

Table 3-5: Other Transportation Providers by Service Category (Non-Fixed Route, Non-Intercity)

Service Category	Organization	Wheel-Chair	Service Area	Base of Operations
Carpool-Vanpool	ACHD Commuteride		District 3	Boise
Charter-Private	Interwest Systems Inc			Boise
Charter- School	Brown Bus Company		Nampa School District	Nampa & Vallivue School District, Wilder School District, Nampa and Vallivue Charter Schools and Nampa Christian Schools.
Charter -School	First Student INC		Boise School District	Boise
Charter -Segway Tour	Adventure Tours			
Charter -Tours and Shuttle	Boise Shuttle Service		Boise Metropolitan Area	Boise
Charter -Tours and Shuttle	Caldwell Transportation Company		Typically travel in SW Idaho-South Central Idaho.	Caldwell
Charter -Tours and Shuttle	K & I Transportation			
Charter -Tours and Shuttle	KDN Transportation			
Charter -Tours and Shuttle	Sun Valley Express		Boise, Sun Valley, Donnelly	Boise
Charter -Vans	Canyon Area Transit	No	Ada, Canyon, Elmore Counties	Nampa, Caldwell (Mondays go to Boise)
Charter -Child Transportation	Child Safe Transportation		Southern Idaho between Boise, Twin Falls, Pocatello and the Wood River Valley.	Boise, Twin Falls
Charter -Child Transportation	Friends of Children and Families		Mt. Home, Twin Falls, Boise	Centers in Boise, Meridian, Mountain Home and Glenn's Ferry.
Charter - Disability Service	Access Specialty Transportation		Primary Canyon County, do transport Dr. appointments in Ada County. Fixed Route based on daily clientel. Door to door service	
Charter -Disability Service	On Time Transport			
Charter -Disability Service	Universal Transport		Treasure Valley	
Charter -Disability Service	UR Mobile		Treasure Valley	
Equipment and Operations	Access Vans	Yes	Boise area	Boise
Equipment and Operations	Para Quad Mobility			
Food Services	Carry out cab		Boise, Meridian	
Food Services	Meals on Wheels-Boise Idaho Elks Rehabilitation Hospital		Boise	

Food Services	Meals on Wheels-Caldwell		Caldwell	
Food Services	Meals on Wheels-Mountain Home		Mountain Home	
Food Services	Meals on Wheels-Nampa Mercy Medical		Nampa	
Medical Transport	Hearts To-Go	Yes	Short and Long Distance Transfers	
Medical Transport	Special Delivery Medical Transport		Ada, Canyon, Washington, Elmore, Payette, Malheur (OR) Counties	New Plymouth
Medical Transport	St. Mark's Crisis Center			Boise
Medical Transport	TopiCare Transportation		Boise, Meridian, Nampa, Caldwell, Kuna, Eagle, Surrounding Areas	
Senior Center	Canyon County Office on Aging/Hispanic Seniors	Yes	Contract for Canyon County, 60 and older. Bus in Caldwell, agreement with Nampa, Parma, and Melba. They also have volunteer drivers, medical appointments outside of city area. Wheel chair van	Caldwell
Senior Center	New Meadows Senior Citizens Center	Yes	New Meadows, trips to Ontario weekly	New Meadows
Senior Center	Washington County Senior Citizens	Yes	Weiser	Weiser
Senior Center/Meals on Wheels	Boise Basin Seniors	No	Idaho City	Idaho City
Senior Center/Meals on Wheels	Boise Senior Activity Center/Senior Solutions Transportation		Greater Boise area, just within Ada County. Not in Eagle or Meridian. St. Lukes in Eagle is the only exception.	Boise
Senior Center/Meals on Wheels	Caldwell Senior Center	Caldwell	Bus travels within Caldwell area (Paratransit and regular van)	Caldwell
Senior Center/Meals on Wheels	Cambridge Midvale Senior Citizen Center	Yes - coming March 2007	Cambridge, Midvale, Ontario (monthly) and occasionally to Boise	Cambridge
Senior Center/Meals on Wheels	Eagle Senior Center	Yes	Eagle- They go as far south as Ustick, E to Glenwood, North boundary city limits, and West boundary city limits	Eagle
Senior Center/Meals on Wheels	Garden City Senior Citizens Center	Yes	Garden City to Boise-5 mile radius	Garden City
Senior Center/Meals on Wheels	Gem County Seniors	Yes	Emmett	Emmett
Senior Center/Meals on Wheels	Homedale Senior Center	No	Homedale-They go to Wilder and greater Homedale impact area.	Homedale

Senior Center/Meals on Wheels	Horseshoe Bend Senior Citizens	Yes	Horseshoe Bend	Horseshoe Bend
Senior Center/Meals on Wheels	Kuna Senior Center	Yes	Kuna	Kuna
Senior Center/Meals on Wheels	Marsing Senior Citizens Center	Yes	Marsing-Service coverage is about a ten mile radius around town. Sunny slope area Canyon County. They go beyond gibbons hot springs towards melba. Some have Homedale addresses.	Marsing
Senior Center/Meals on Wheels	Melba Senior Citizens Center	Yes	Melba-About 7 mile radius around Melba Senior Center, Murphy, Gibbons Hot springs, Nampa for Grocery Shopping.	Melba
Senior Center/Meals on Wheels	Mercy Express (Friends of Mercy -Medical -Dental Appt. only)	No	Nampa	Nampa
Senior Center/Meals on Wheels	Meridian Senior Center	Yes	Meridian	Meridian
Senior Center/Meals on Wheels	Mountain Home Senior Center	Yes		Mountain Home
Senior Center/Meals on Wheels	Nampa Council on Aging Senior Center	Yes	Nampa-Approximate 2 mile radius of Senior center. 3 day services 9-2	Nampa
Senior Center/Meals on Wheels	New Plymouth Senior Citizens Center	Yes	New Plymouth-Limited based on lack of drivers, they collect people to come to the meals on Tuesday and Thursdays. Pickups are about 10AM. Fruitland is farthest extent of service, which is about an hour round trip. General New Plymouth area.	New Plymouth
Senior Center/Meals on Wheels	Parma Senior Citizens Center	Yes	Parma- They travel as far as Wilder and Greenleaf but mostly Parma area. The bus also goes to Nampa, Caldwell areas on Tuesday afternoons (occasionally go to Boise)	Parma
Senior Center/Meals on Wheels	Payette Senior Center	Yes	Payette	Payette
Senior Center/Meals on Wheels	Rimrock Senior Citizens Center-Meals on Wheels	No	Bruneau, Granview, Oria- 18 miles (They take people to Mountain Home on the third Friday of each month. Meals on wheels.	Grandview
Senior Center/Meals on Wheels	Star Senior Citizens Center-Meals on Wheels	Yes	Star-City of Star and extends into the western portion of Eagle and up through Middleton.	Star
Senior Center/Meals on Wheels	Three Island Senior Center-Meals on Wheels	Yes		Glenns Ferry

Senior Volunteer Program	Retired Senior Volunteer Program	No	Nampa	Nampa
Social Service-non transport	Area Office on Aging III	Yes	Not a transportation Provider-District 3- They give money to senior centers, but not transportation services	Boise
Social Service-non transport	Elderly Opportunity Agency	Yes	Adams, Boise, Gem, Owyhee, Payette, Valley, & Washington	Emmett
Social Service-non transport	Idaho Commission on Aging			
Social Service-non transport	Idaho Federation of Families for Childrens Mental Health		Treasure Valley	Adams, Canyon, Gem, Owyhee, Payette, Washington
Social Service-non transport	Idaho State Health and Welfare		Cash assistance only	
Social Service-non transport	International Rescue Committee		Referral services-Boise	Boise
Social Service-non transport	Nampa Retired Senior Volunteer Program		They are not a transportation provider. They refer to several volunteer service drivers- more rural areas, but that is very limited	
Social Service-non transport	Senior Solutions Inc.	Yes	Boise, Ada County	Boise
Social Service-non transport	Southwest Idaho Area Agency on Aging	Yes	Cover ten counties, do not provide transportation. Senior Centers.	Garden City
Social Service-non transport	WITCO	Yes	Nampa, Caldwell, other Canyon County	Caldwell
Social Service-non transport	World Relief Boise			Boise
Social Services	HIV Services Clinic / Family Medicine Health Center*		Caldwell	
Social Services	Infant Toddler Program/Region III Department of Health and Welfare*		Region III	
Social Services	Idaho Division of Veterans Services (IDVS)*		Statewide	
Social Services	Idaho Department of Health & Welfare, Region III*		Region III	
Social Services	St. Mark's Catholic Community*			

Social Services	Senior Solutions, Boise		Boise	Boise
Social Services	Idaho Department of Health & Welfare - Behavioral Health*		Region III	
Taxi	24 Seven Taxi/ AA Cab Co/Sawaddee Taxi		Ada, Canyon	Boise
Taxi	A Country Cab		Treasure Valley	
Taxi	A&N Taxi		Ada	Boise
Taxi	A+ Specialty Transport	Yes	Statewide	Garden City
Taxi	A-1 Stop-N-Go Taxi cab		Nampa only	Nampa
Taxi	A-1 Yellow Taxi		Ada, Canyon, but will go anywhere depending on how much people are willing to pay. Up to individual driver to negotiate cost.	Boise
Taxi	AAA Airport Taxi			Boise
Taxi	AAT		Boise, Eagle, Meridian	
Taxi	ABC Taxi		Ada, Canyon	Boise
Taxi	Able Transport Services	Yes	Boise, Eagle, Meridian	Nampa
Taxi	Ace Taxi Co		Ada, Canyon	Boise
Taxi	Ada-Boi Critical Care Transfer Team		Idaho	Boise
Taxi	Advanced Wheelchair Transport	Yes	Boise, Meridian, Nampa, Caldwell, Surrounding Areas	Boise
Taxi	Airport Cab Co.			Boise
Taxi	Airway Taxi		Ada, Canyon	Boise
Taxi	All City Taxi		Boise, Meridian, Eagle, Star, Nampa, Caldwell and surrounding areas.	
Taxi	American Cab Company		Ada, Canyon	Boise
Taxi	American Eagle USA		Ada, Canyon	Boise
Taxi	American Luxury Taxi		Ada	Boise
Taxi	Andy's Taxi Service			Nampa
Taxi	Anytime Taxi		Ada	Boise
Taxi	Area Transport Inc			Nampa
Taxi	Armin Taxi			
Taxi	Arrowhead Cab			Boise
Taxi	At Your Service dba	Yes	Statewide -Ada, Canyon, Washington, Elmore, Payette, Malheur (OR) Counties	Boise

Taxi	B & C Transport			Nampa
Taxi	Big Sky			Boise
Taxi	Black and White Cab		Ada	Boise
Taxi	Black Kat Taxi		Ada, Canyon	Boise
Taxi	Blue Sky		Ada	Boise
Taxi	Boise City Taxi Inc		Boise, Eagle, Meridian, Garden City	Boise
Taxi	Boise Tour Train & Trolley		Ada County, Nampa	Boise
Taxi	Bronco Taxi		Ada	Boise
Taxi	Call A Ride Shuttle		Elmore, Ada, Canyon Counties	Mountain Home
Taxi	Capital Cab Co		Ada	Boise
Taxi	Cash Taxi			
Taxi	Checker Cab Co		Ada	Boise
Taxi	Columbia Cab Co.		Ada	Boise
Taxi	Copper Top Cab Service			Boise
Taxi	Corner Stone			
Taxi	Courtesy Cab		Ontario, Fruitland, Payette	Ontario, OR
Taxi	Crewzers			Boise
Taxi	Cruisin' Cab		Ada, Canyon	Boise
Taxi	Diamond Express Shuttles		All Treasure Valley	Payette
Taxi	Diamond Taxi			Boise
Taxi	Durham Transportation		Boise	Boise
Taxi	Eagle Taxi		Ada	Boise
Taxi	Fran's Taxi			Mountain Home
Taxi	GATCO		Ada, Gem, Boise Counties	Horseshoe Bend
Taxi	Gold Cab Co		Ada	Boise
Taxi	Gold Taxi Services			
Taxi	Green and White Taxi		Ada	Boise
Taxi	Guardian Angel			Boise
Taxi	Hearts for Hospice	Yes, wheelchair & gurney	Ada, Canyon, beyond on arrangement	Boise
Taxi	Hound Express	Yes	Ada, Canyon Counties, Homedale, Emmett	
Taxi	Idaho Taxi		Ada	Boise
Taxi	Idaho Tours & Transit			Boise

Taxi	Ida-Ride Corp.		Ada, Canyon, Washington, Elmore, Payette, Malheur (OR) Counties	Fruitland
Taxi	J & A Transport			Boise
Taxi	John's Kent's Transport		Canyon County	Caldwell
Taxi	KDN Transportation			Boise
Taxi	Keystone West/			Boise
Taxi	Kool Cab			Boise
Taxi	Ladybug Transport			Nampa
Taxi	Liberty Express		Ada	Boise
Taxi	Life's Doors	Yes	Ada- Canyon County	Boise
Taxi	Limo Taxi		Ada	Boise
Taxi	Meridian Checker Cab			Meridian
Taxi	Meridian Taxi			Boise
Taxi	MolinRu Transportaiton		Ada, Canyon, Elmore	Boise
Taxi	Mountain Home Shuttle		Elmore, Ada, Gooding Counties	Mountain Home
Taxi	Mountain Home Shuttle Service	Yes	Ada, Canyon, Elmore, Washington, Elmore, Gooding, Payette, Malheur (OR) Counties	Mountain Home
Taxi	My Taxi	No	Ada	Boise
Taxi	Non Smoking Taxi			
Taxi	Northwest Taxi	No	Boise Area	Boise
Taxi	Penny's Cab Co.		Ada	Boise
Taxi	Pick Me Up Transportation		Ada Canyon Counties	Nampa
Taxi	PROMPT Delivery & Transportation Inc	No	Boise, McCall Riggins	McCall
Taxi	PT Express Taxi Service			Boise
Taxi	Quick Cab		Ada	Boise
Taxi	Regal Cab Co		Ada	Boise
Taxi	River City Taxi		Ada	Boise
Taxi	Road Runner Cab and Shuttle Companies		Ada, Canyon	Nampa, Boise
Taxi	Royal Taxi		Ada	Boise
Taxi	S&R Wheelchair and Special Transportation	Yes	Ada, Canyon	Meridian
Taxi	Sanimar Taxi		Ada	Boise
Taxi	Service Cab		Ada, Canyon	Boise
Taxi	Sunshine Taxi		Ada	Boise

Taxi	Taxi Capri			
Taxi	Terry Fairchild			Boise
Taxi	TN Transportation		Ada, Canyon Counties	Nampa
Taxi	Town and Country Cab		Ada	Boise
Taxi	Treasure Valley Orange Cab Company		Ada Canyon	Boise
Taxi	Tri City Transportation	No	Ada, Canyon, Elmore, Payette, Washington, Gem, Malheur (OR) Counties	
Taxi	United Transportation Inc			Boise
Taxi	US Taxi		Boise	Boise
Taxi	USA Taxi		Ada	Boise
Taxi	Yellow Cab		Boise, Meridian, Eagle	Boise
Taxi-disability only	Taxi SCRIP	Yes	Ada County	
Taxi-Medicaid	ELS Transportation		Treasure Valley, Sun Valley, Twin Falls, Cascade, Mt Home	Garden City
Taxi-Medicaid	Transylvania Express		All Idaho	
Taxi-Medicaid	Trinity Transportation		Boise city mostly, Occasionally Meridian, Kuna, Eagle	
Veterans Transport	Disabled American Veterans Transportation			
Veterans Transport	Vet Transport	Yes	Boise and surrounding area	
Vocational Rehab	The Arc INC Vocational Rehab		Boise area	Boise
Voucher	Boise City Scrip		Boise City Limits	Boise
Voucher	Community Ministries Center			Boise
Voucher	El-Ada Community Action Partnership		Ada, Elmore, and Owyhee Counties	Boise
Voucher	Salvation Army		Southeast Idaho	Portland
Voucher	St. Michael's Episcopal Church			Boise

Appendix C: Available Funding (Estimated)

Designated Recipient (Grant Administrator)	Fund Source – Area	2006 \$ estimate (expires 2008)	2007 \$ estimate (expires 2009)	2008 \$ estimate (expires 2010)	2009 \$ estimate (expires 2011)	Applications
VRT	JARC (5316) – Boise	97,255 (obligated)	102,516 (obligated)	111,059 (obligated)	117,101	
ITD	JARC (5316) – Small Urban/Statewide (District 3)	295,735 (obligated)	311,710 (obligated)	0	367,284	COMPASS Application is in Development
ITD	JARC (5316) – Rural/Statewide (District 3)	236,073 (obligated)	0	0	273,159	To be made available here: http://www.compassidahoh.org/
VRT	New Freedom (5317) – Boise	56,076 (obligated)	63,948 (obligated)	69,079 (obligated)	67,173	Submit ITD application packet found here:
ITD	New Freedom (5317) – Small Urbanized/Statewide (District 3)	152,405 (obligated)	162,054 (obligated)	0	233,196	http://www.mobilityidahoh.org/15AnnualFunding2011.htm
ITD	New Freedom (5317) – Rural/Statewide (District 3)	98,861 (obligated)	0	0	115,244	Applications should be developed taking into
ITD	Elderly & Disabled (5310) – District 3	221,845 (obligated)	198,764 (obligated)	78,775 (obligated)	221,845	consideration the criteria in the 3C LMMN Mobility Plan.
ITD	Formula Grants - Rural (5311) – District 3	982,481 (obligated)	859,658 (obligated)	953,474 (obligated)	982,481	

ITD	Formula Grants - Intercity (5311f) - District 3	210,532 (obligated)	184,212 (obligated)	204,316 (obligated)	210,632
-----	--	------------------------	------------------------	------------------------	---------

Appendix D: Funding Programs

Elderly Individuals and Individuals with Disabilities (5310)

FTA May 1, 2007 (5310)

<http://www.fta.dot.gov/documents/C9070.1F.pdf>

General. The Federal share of eligible capital costs may not exceed 80 percent of the net cost of the activity. The 10 percent that is eligible to fund program administrative costs including administration, planning, and technical assistance may be funded at 100 percent Federal share. The local share of eligible capital costs shall be no less than 20 percent of the net cost of the activity.

The local share may be provided from an undistributed cash surplus, a replacement or depreciation cash fund or reserve, a service agreement with a State or local service agency or private social service organization, or new capital. Some examples of these sources of local match include: State or local appropriations; dedicated tax revenues; private donations; revenue from service contracts; toll revenue credits; and net income generated from advertising and concessions. Non-cash share such as donations, volunteered services, or in-kind contributions is eligible to be counted toward the local match as long as the value of each is documented and supported, represents a capital cost which would otherwise be eligible under the program, and is included in the net project costs in the project budget. In addition, the local share may be derived from Federal programs that are eligible to be expended for transportation, other than DOT programs, or from DOT's Federal Lands Highway Program. Examples of types of programs that are potential sources of local match include: employment, training, aging, medical, community services, and rehabilitation services. Specific program information for other types of Federal funding is available at www.unitedweride.gov.

b. Exceptions. The Federal share is 90 percent for vehicle-related equipment and facilities required by the Clean Air Act (CAA) or the Americans with Disabilities Act (ADA). It is only the incremental cost of the equipment or facility required by the CAA or ADA that may be funded at 90 percent, not the entire cost of the vehicle or facility, even if the vehicle or facility is purchased for use in service required by the ADA or CAA. States wishing to apply for assistance at the higher match ratio should consult the FTA regional office for further guidance regarding methods of computing the incremental cost before submitting an application.

c. Seven State Pilot Program. Section 3012(b) of SAFETEA-LU authorized a seven State pilot program allowing four States specified in SAFETEA-LU (Alaska,

Minnesota, Oregon, and Wisconsin) and three selected by FTA (Louisiana, North Carolina, and South Carolina) to use up to one-third of their apportionment for fiscal years 2006 – 2009 for operating expenses. For these States, the Federal share for operating expenses is 50 percent, or 62.5 percent of the sliding scale rate for capital grants.

d. Sliding Scale Match. Higher Federal share rates for capital costs are available to 14 States described in 23 U.S.C. 120(b). The higher Federal shares under 23 U.S.C. 120 (b)(1), shown in Table 1, are based on the ratio of designated public lands area to the total area of these 14 States. For FTA capital grants, the Federal share increases from 80 percent in proportion to the share of public lands in the State. For FTA operating grants in these same States, the Federal share increases from 50 percent to 62.5 percent (5/8) of the rate for capital grants.

Table 1: Idaho Transit Capital Grants Sliding Scale is 84.97% federal

Additional higher Federal share rates are shown in Table 2 and are based on the ratio of the area of nontaxable Indian land, public domain lands (reserved and unreserved), national forest, and national parks and monuments to the total area of each State. These rates are available only for States that have already in place signed agreements with FHWA under 23 U.S.C. 120(b)(2). For FTA Section 5310 and 5311 projects, any State having such an agreement with FHWA is eligible for the higher Federal match permitted in Section 120(b)(2). States may not enter into new Section 120(b)(2) agreements with FTA for Section 5310 or 5311 grants. In the absence of a Section 120(b)(2) agreement with FHWA, Section 120(b)(1) sets the sliding scale rates for Section 5310 and 5311 grants.

Table 2: Idaho Transit Capital Grants Sliding Scale is 92.66% federal

Nonurbanized Area Formula Programs (5311)

FTA May 1, 2007 (5311):

http://www.fta.dot.gov/documents/FTA_C_9040.1F.pdf

Capital and Project Administration. The Federal share of eligible capital and project administrative expenses may not exceed 80 percent of the net cost of the project. There are three exceptions to the 80 percent match for capital projects.

Bicycle Projects. Under 49 U.S.C. 5319, the Federal share may be 90 percent for those capital projects used to provide access for bicycles to transit facilities, or to install racks or other equipment for transporting bicycles on transit vehicles.

ADA and Clean Air Act. Under 49 U.S.C. 5323(i), the Federal share may be 90 percent for vehicle-related equipment or facilities required by ADA or vehicle related equipment or facilities (including clean fuel or alternative fuel vehicle related equipment or facilities) for purposes of complying with or maintaining compliance with the Clean Air Act (CAA), as amended. According to 49 U.S.C. 5323(i), it is only the incremental cost of the equipment required by the ADA or CAA that may be funded at 90 percent, not the entire cost of the vehicle, even if the vehicle is purchased for use in service required by the ADA or CAA. Alternatively, for administrative simplicity FTA allows grantees to compute the Federal share at 83 percent for accessible vehicles. For facilities, FTA will consider the incremental cost

of the ADA or CAA equipment on a case-by case basis. (States entitled to a sliding scale Federal share higher than 80 percent may find it more advantageous to calculate the 90 percent share on the incremental cost of vehicle related equipment rather than using the 83 percent composite share).

Sliding Scale. Higher Federal share rates for capital costs are available to 14 States described in 23 U.S.C. 120(b). The higher Federal shares under 23 U.S.C. 120 (b)(1), shown in Table 1, are based on the ratio of designated public lands area to the total area of these 14 States. For FTA capital grants, the Federal share increases from 80 percent in proportion to the share of public lands in the State. For FTA operating grants in these same States, the Federal share increases from 50 percent to 62.5 percent (5/8) of the rate for capital grants.

Table 1: Idaho Transit Capital Grants Sliding Scale is 84.97% federal

Additional higher Federal share rates are shown in Table 2 and are based on the ratio of the area of nontaxable Indian land, public domain lands (reserved and unreserved), national forest, and national parks and monuments to the total area of each State. These rates are available only for States that have already in place signed agreements with FHWA under 23 U.S.C. 120(b)(2). For FTA Section 5310 and 5311 projects, any State having such an agreement with FHWA is eligible for the higher Federal match permitted in Section 120(b)(2). States may not enter into new Section 120(b)(2) agreements with FTA for Section 5310 or 5311 grants. In the absence of a Section 120(b)(2) agreement with FHWA, Section 120(b)(1) sets the sliding scale rates for Section 5310 and 5311 grants.

Table 2: Idaho Transit Capital Grants Sliding Scale is 92.66% federal

b. Operating Expenses. With respect to operating expenses, 49 U.S.C. 5311(g)(2) provides that the Federal share shall not exceed 50 percent of the net operating cost of the project. For States eligible for the sliding scale match under 23 U.S.C. 120(b), the Federal match for operating assistance is set at 62.5 percent of the match for capital projects in those States (see Tables 1 and 2 above).

Under Subsection 5311(g)(3)(A), funds received pursuant to a service agreement with a State or local social service agency or a private social service organization may be used as local match. Income from contracts to provide human service transportation may be used either to reduce the net project cost (treated as revenue) or to provide local match for Section 5311 operating assistance. In either case, the cost of providing the contract service is included in the total project cost. The manner in which a sub-recipient applies income from human service agencies to a project affects the calculation of net operating expenses and, therefore, the amount of Section 5311 operating assistance the project is eligible to receive. A State's method of sub-allocating its apportionment among its sub-recipients is a discretionary action, subject only to the statutory requirements described in this circular. While a State may not prohibit a sub-recipient from using income from human service agency contracts as a source of local match according to Subsection 5311(g)(5), the State may elect to regard the degree to which a sub-recipient demonstrates local financial commitment to the project from other sources of local funds as a rating factor in its discretionary allocation decisions.

c. State Administration and RTAP. No local share is required for State administration and RTAP.

d. Sources of Local Match. Under Subsection 5311(g)(3), a local match for the remainder of net project costs:

may be provided from an undistributed cash surplus, a replacement or depreciation cash fund or reserve, a service agreement with a State or local social service agency or a private social service organization, or new capital; may be derived from amounts appropriated or otherwise made available to a department or agency of the Government (other than the [U.S.] Department of Transportation) that are eligible to be expended for transportation; or notwithstanding subparagraph (B), may be derived from amounts made available to carry out the Federal Lands Highway Program established by Section 204 of Title 23.

Examples of non-Federal sources that may be used for any or all of the local share include: State or local appropriations; dedicated tax revenues; private donations; and net income generated from advertising and concessions. Recipients may count non-cash shares such as donations, volunteered services, or in-kind contributions toward the local match only if the recipient formally documents the value of each non-cash share, and if this value represents a cost that would otherwise be eligible under the project. The net project cost must include the value of any in-kind contributions included in net project cost to the extent it is used as local match. States should reference Federal Administrative Rules for Grants and Cooperative Agreements, 49 CFR parts 18 and 19 for more information.

Recipients may use funds from other Federal agencies (non-DOT) for the entire local match if the other agency makes the funds available to the recipient for the purposes of the project. The only DOT funds that States can use as local match for Section 5311 projects are from the Federal Lands Highway Program cited in 49 U.S.C. 5311(g)(3).

A State cannot use Section 5310 or other FTA funds as match for Section 5311 program funds. Even though funds are made available to the rural transit provider through a service agreement with a State or local social service agency or private social service organization, FTA funds may not be used as match because they are derived from a DOT program.

JARC

FTA May 1, 2007 JARC (5316) – Page III-10:

http://www.fta.dot.gov/laws/circulars/leg_reg_6623.html

a. General. JARC funds may be used to finance capital, planning and operating expenses. The Federal share of eligible capital and planning costs may not exceed 80 percent of the net cost of the activity. The Federal share of the eligible operating costs may not exceed 50 percent of the net operating costs of the activity.

Recipients may use up to 10 percent of their apportionment to support program administrative costs including administration, planning, and technical assistance,

which may be funded at 100 percent Federal share. The local share of eligible capital and planning costs shall be no less than 20 percent of the net cost of the activity, and the local share for eligible operating costs shall be no less than 50 percent of the net operating costs. All of the local share must be provided from sources other than Federal DOT funds. Some examples of sources of local match which may be used for any or all of the local share include: State or local appropriations; other non-DOT Federal funds; dedicated tax revenues; private donations; revenue from human service contracts; toll revenue credits; and net income generated from advertising and concessions. Non-cash share such as donations, volunteered services, or in-kind contributions is eligible to be counted toward the local match as long as the value of each is documented and supported, represents a cost which would otherwise be eligible under the program, and is included in the net project costs in the project budget. Income from contracts to provide human service transportation may be used either to reduce the net project cost (treated as revenue) or to provide local match for JARC operating assistance. In either case, the cost of providing the contract service is included in the total project cost. No FTA program funds can be used as a source of local match for other FTA programs, even when used to contract for service.

b. Exceptions. The Federal share is 90 percent for vehicle-related equipment and facilities required by the Clean Air Act (CAA) or the Americans with Disabilities Act (ADA). It is only the incremental cost of the equipment or facility required by the CAA or ADA that may be funded at 90 percent, not the entire cost of the vehicle or facility, even if the vehicle or facility is purchased for use in service required by the ADA or CAA. Designated recipients wishing to apply for assistance at the higher match ratio should consult the FTA regional office for further guidance regarding methods of computing the incremental cost before submitting an application.

c. Use of Other Federal Funds. Local match may be derived from other Federal funds derived from Federal programs that are eligible to be expended for transportation, other than from the DOT programs. Examples of types of programs that are potential sources of local match include: employment training, aging, community services, vocational rehabilitation services, and Temporary Assistance for Needy Families (TANF). To be eligible for local match for FTA funds, the other Federal funds must be used for activities included in the total net project costs of the FTA grant. Expenditure of other Federal funds for transportation outside of the scope of the project cannot be applied as a credit for local match in the FTA grant. Specific program information for other types of Federal funding is available at www.unitedweride.gov.

New Freedom

FTA May 1, 2007 New_Freedom (5317) Page III-11:

http://www.fta.dot.gov/laws/circulars/leg_reg_6624.html

a. General. New Freedom funds may be used to finance capital and operating expenses. The Federal share of eligible capital and planning costs may not exceed 80 percent of the net cost of the activity. The Federal share of the eligible operating costs may not exceed 50 percent of the net operating costs of the activity.

Recipients may use up to 10 percent of their apportionment to support program administrative costs including administration, planning, and technical assistance, which may be funded at 100 percent Federal share. The local share of eligible capital costs shall be no less than 20 percent of the net cost of the activity, and the local share for eligible operating costs shall be no less than 50 percent of the net operating costs. All of the local share must be provided from sources other than Federal DOT funds. Some examples of sources of local match which may be used for any or all of the local share include: State or local appropriations; other non-DOT Federal funds; dedicated tax revenues; private donations; revenue from human service contracts; toll revenue credits; and net income generated from advertising and concessions. Non-cash share such as donations, volunteer services, or in-kind contributions is eligible to be counted toward the local match as long as the value of each is documented and supported, represents a cost which would otherwise be eligible under the program, and is included in the net project costs in the project budget. Income from contracts to provide human service transportation may be used either to reduce the net project cost (treated as revenue) or to provide local match for New Freedom operating assistance. In either case, the cost of providing the contract service is included in the total project cost. No FTA program funds can be used as a source of local match for other FTA programs, even when used to contract for service.

b. Exceptions. The Federal share is 90 percent for vehicle-related equipment and facilities required by the Clean Air Act (CAA) or the Americans with Disabilities Act (ADA). It is only the incremental cost of the equipment or facility required by the CAA or ADA that may be funded at 90 percent, not the entire cost of the vehicle or facility, even if the vehicle or facility is purchased for use in service required by the ADA or CAA. Designated recipient wishing to apply for assistance at the higher match ratio should consult the FTA regional office for further guidance regarding methods of computing the incremental cost before submitting an application.

c. Use of Other Federal Funds. Local match may be derived from other Federal programs that are eligible to be expended for transportation, other than funds from DOT programs. Examples of types of programs that are potential sources of local match include: employment, training, aging, medical, community services, and rehabilitation services. To be eligible for local match for FTA funds, the other Federal funds must be used for activities included in the total net project costs of the FTA grant. Expenditure of other Federal funds for transportation outside of the scope of the project cannot be applied as a credit for local match in the FTA grant. Specific program information for other types of Federal funding is available at www.unitedweride.gov.

Appendix E: Maps

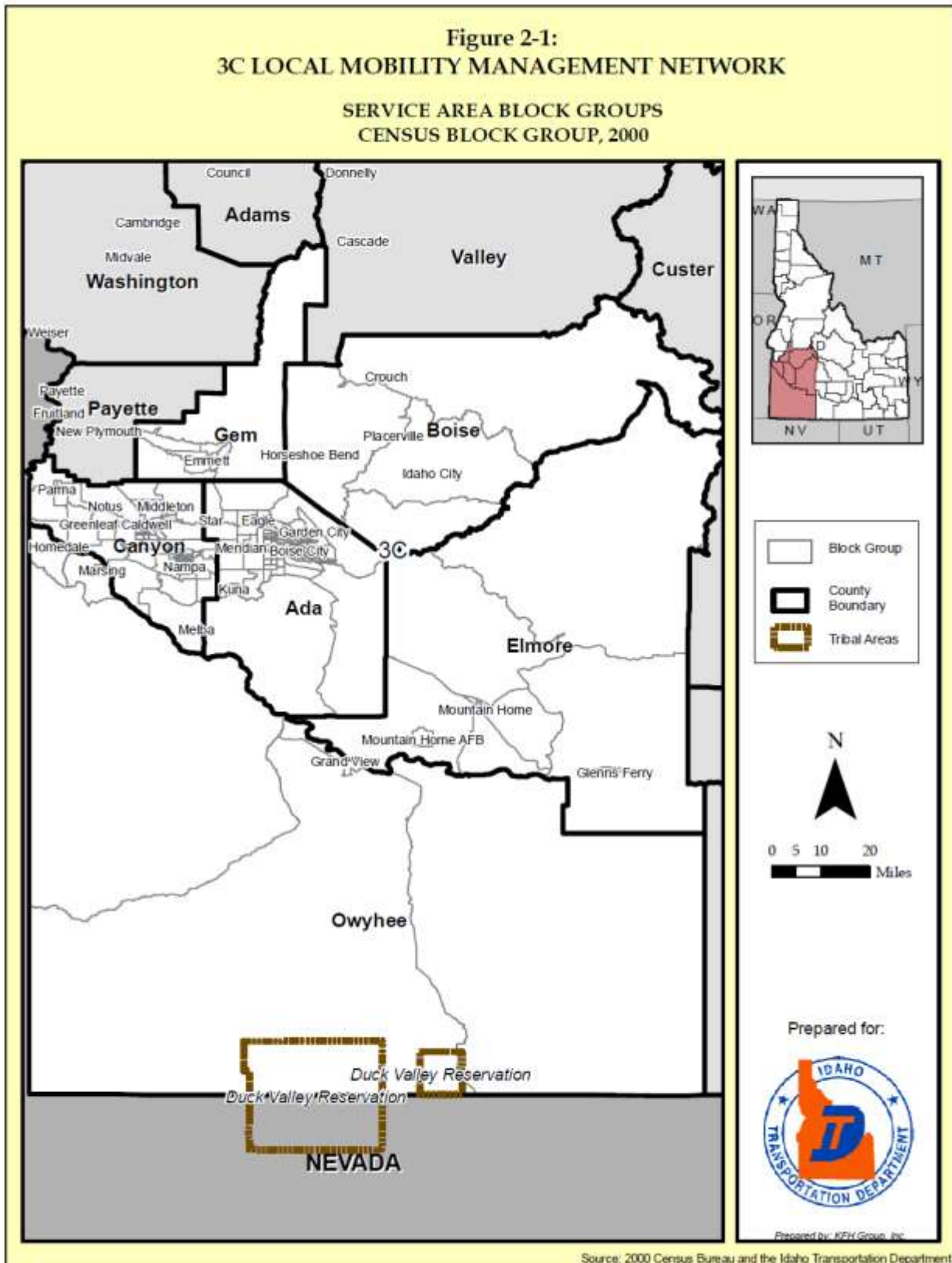
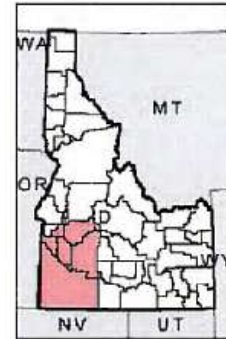
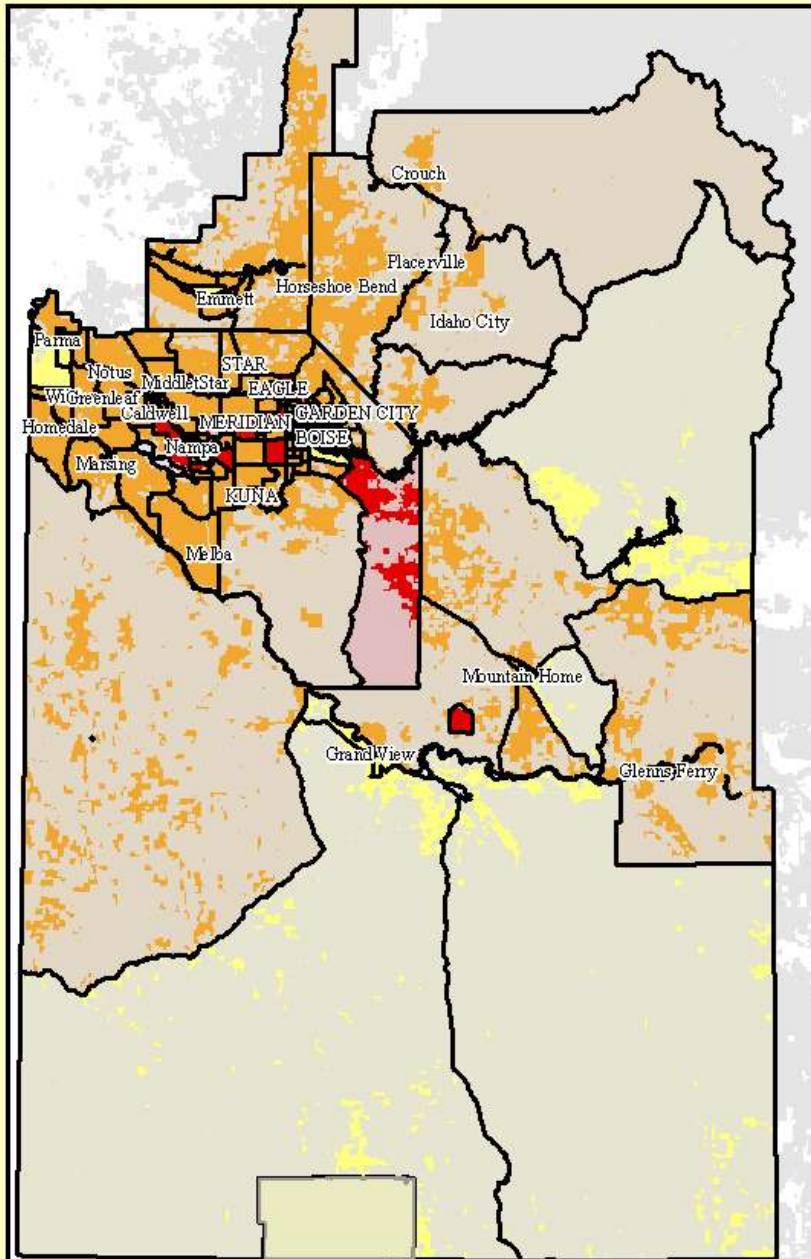


Figure 2-2

3C Local Mobility Management Network Total Population

Population Estimates 2008 (Claritas)



**3C LMMN
Number of Persons
By Census Block Group**

- Block Group
- Public Lands
- Total Population**
 - 284 - 1000
 - 1000 - 6000
 - 6000 - 21000

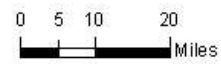
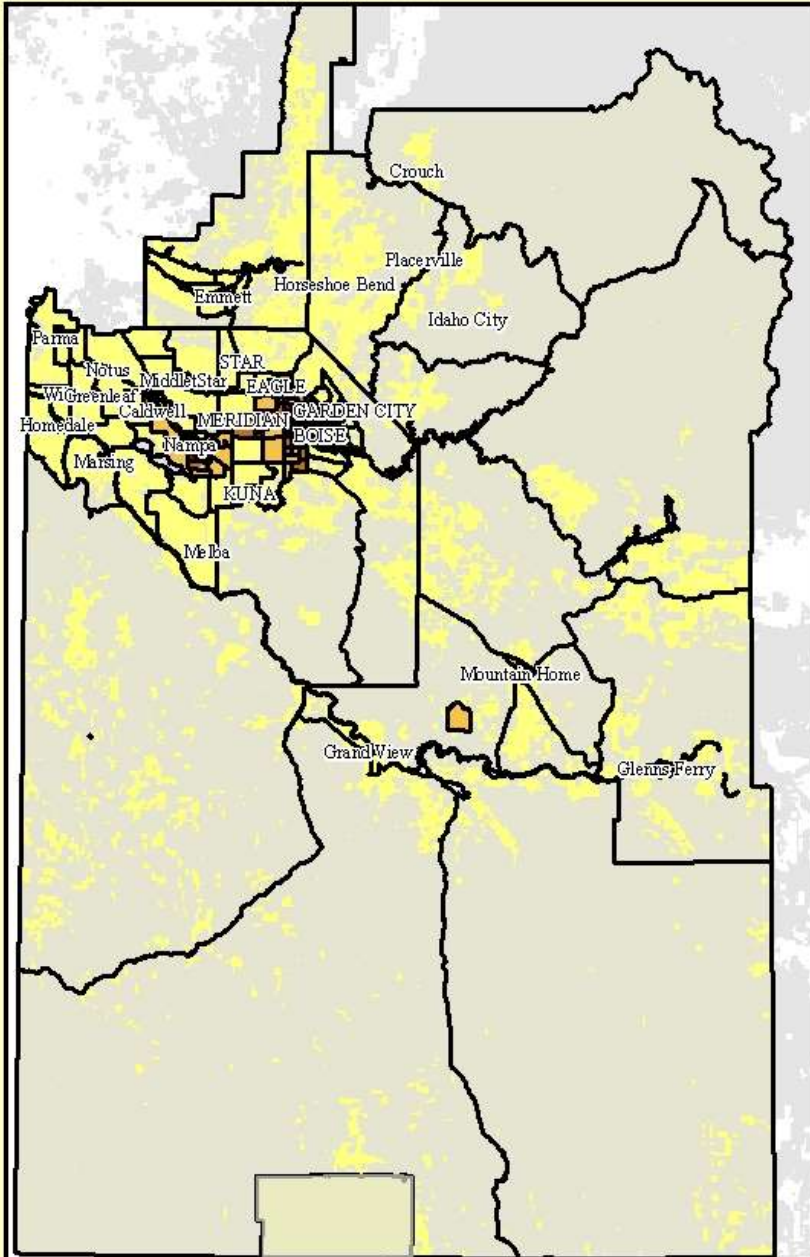


Figure 2-3

3C Local Mobility Management Network Population Density Persons Per Acre

Population Estimates 2008 (Claritas)



3C LMMN
Persons Per Acre
By Census Block Group

- Block Group
- Public Lands

Population Density

- 0-1
- 1-3
- 3-5
- 5-15



0 5 10 20
Miles



Mobility and Transportation



Moving People



Figure 2-4

3C Local Mobility Management Network Population 60 and Older

Population Estimates 2008 (Claritas)

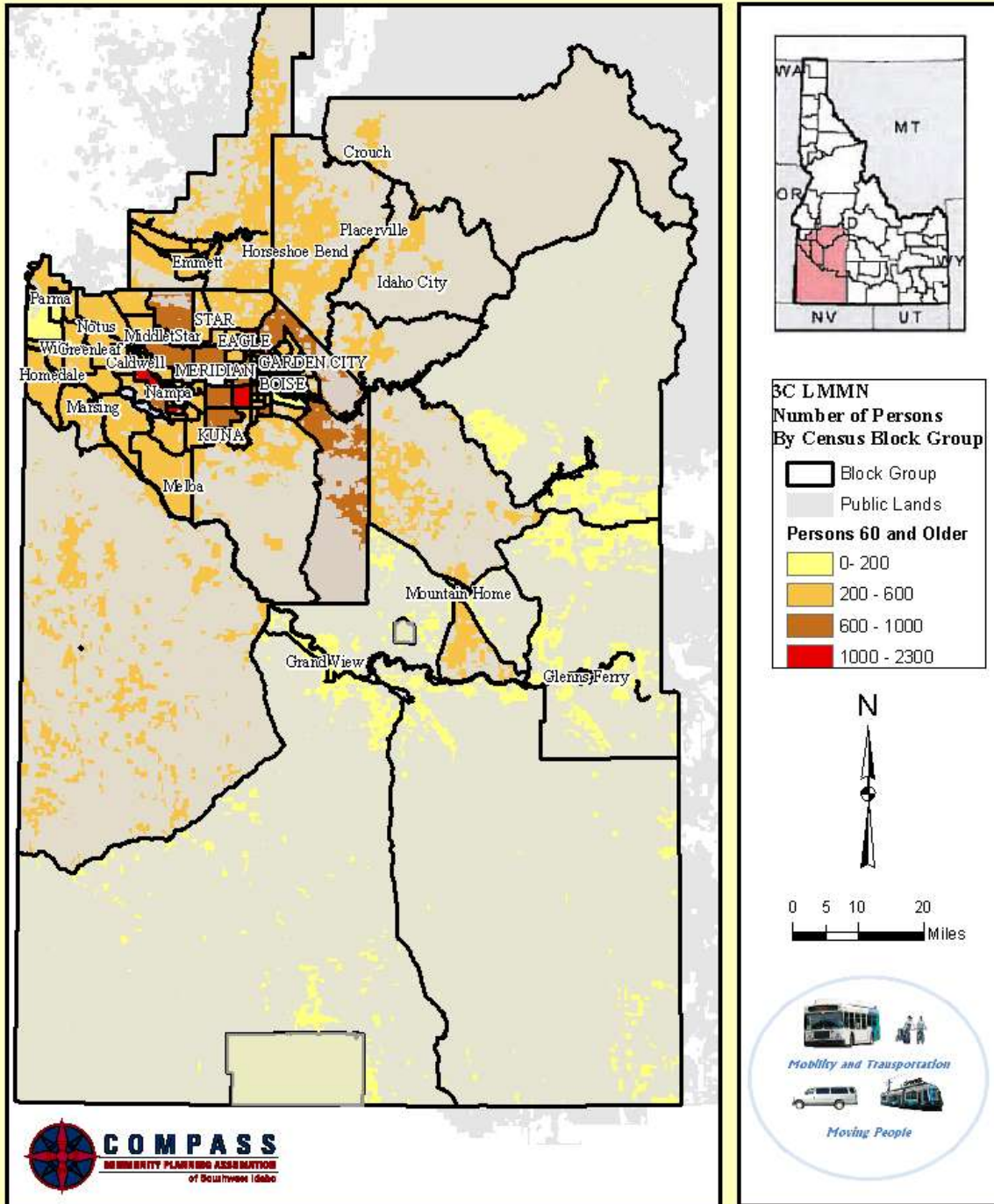


Figure 2-5

3C Local Mobility Management Network Population of Persons with a Disability (16 and Older)

Population Data 2000 (Claritas)

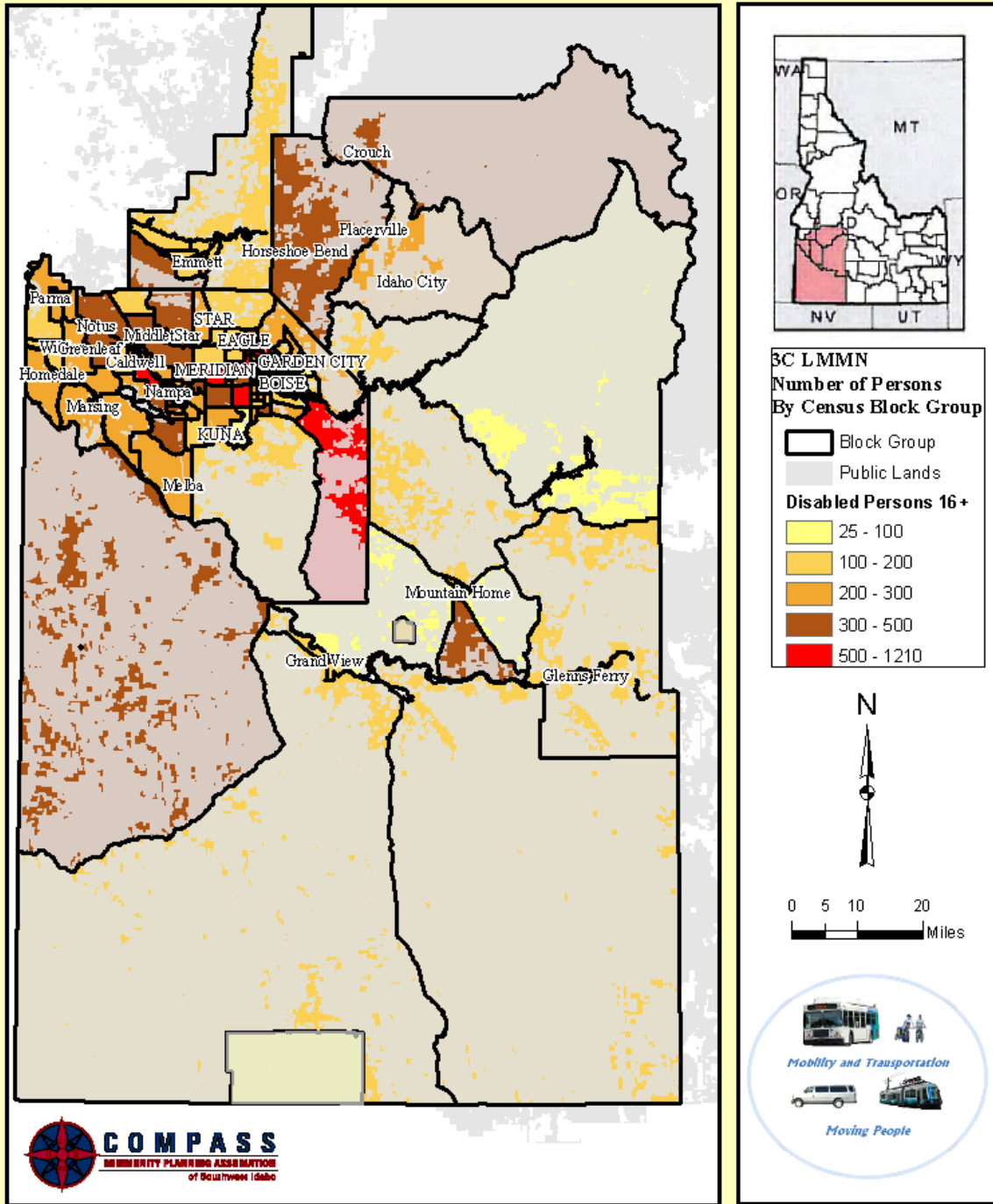


Figure 2-6

3C Local Mobility Management Network Families Below Poverty

Population Estimates 2008 (Claritas)

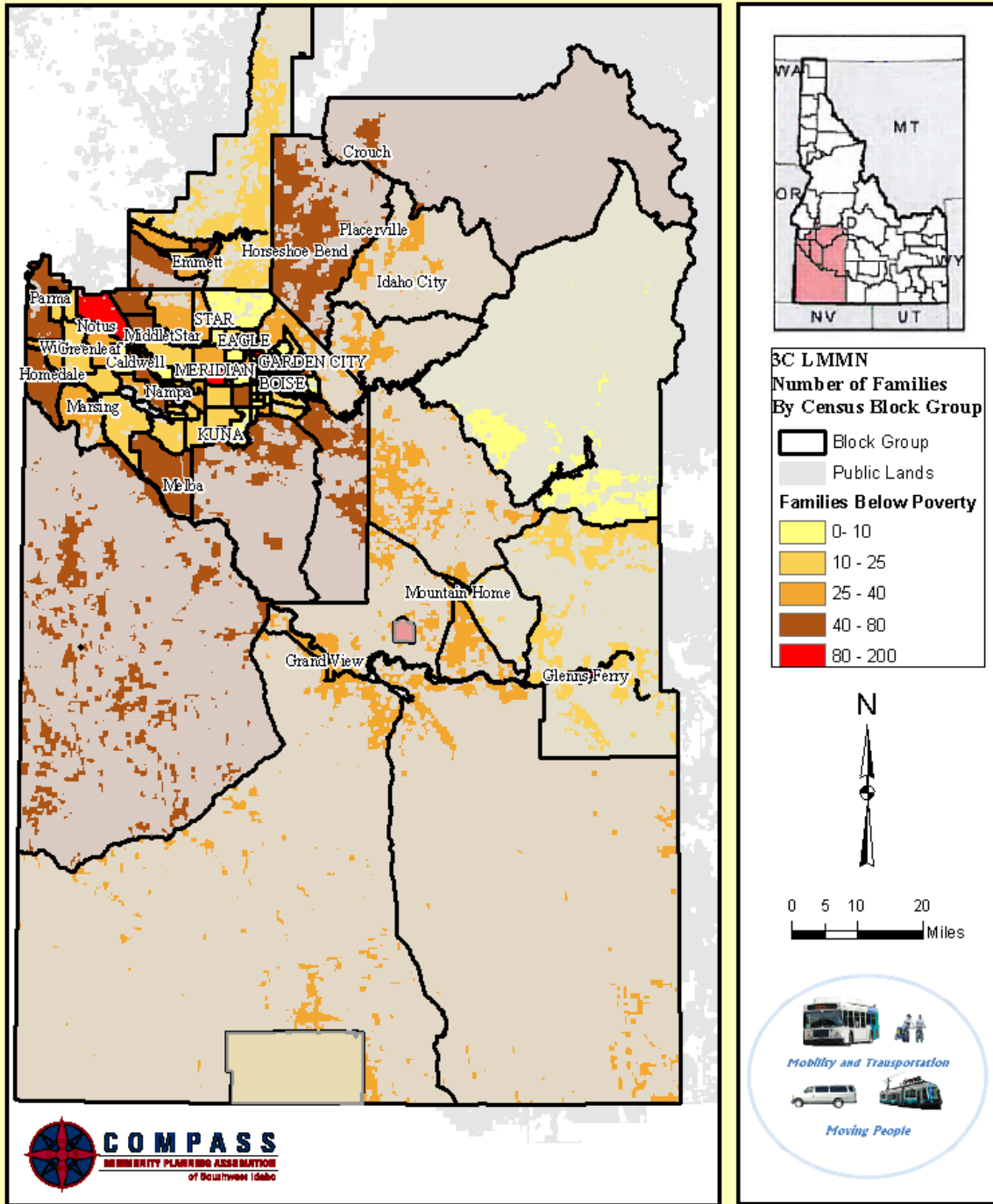


Figure 2-7

3C Local Mobility Management Network Number of Autoless Households

Population Estimates 2008 (Claritas)

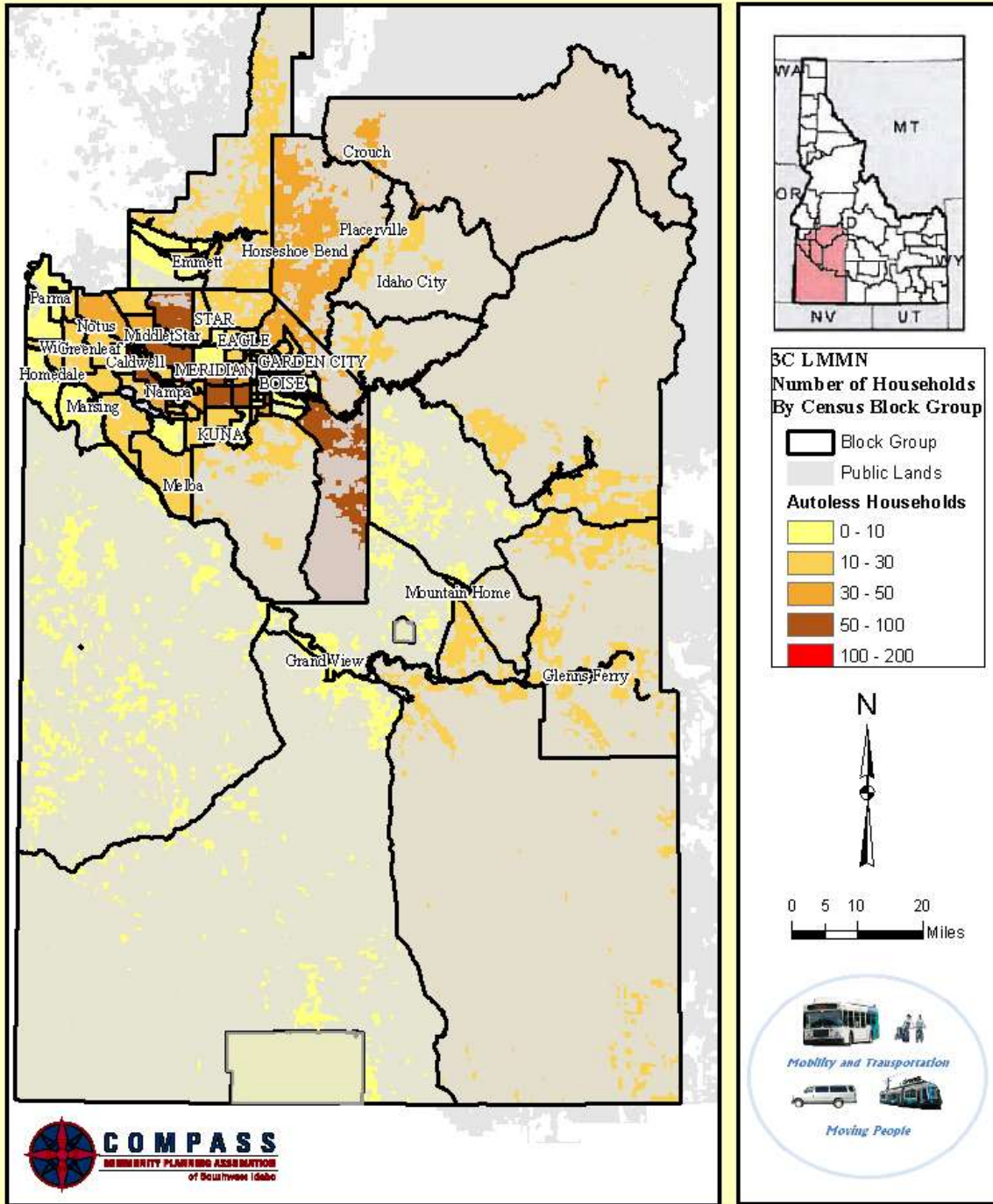
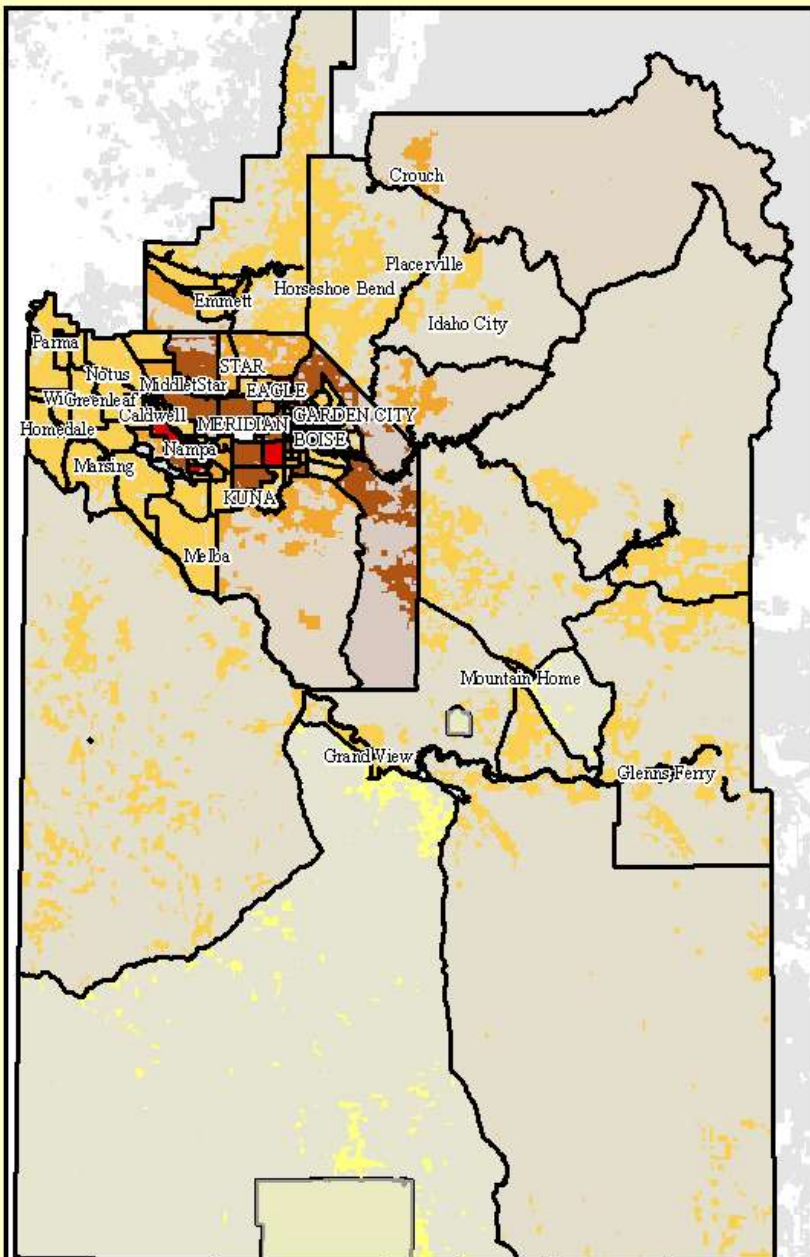


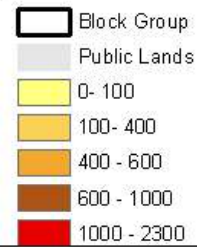
Figure 2-8

3C Local Mobility Management Network Youth Populations (Age 10-17)

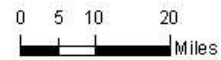
Population Estimates 2008 (Claritas)



3C LMMN
Number of Persons
By Census Block Group



N



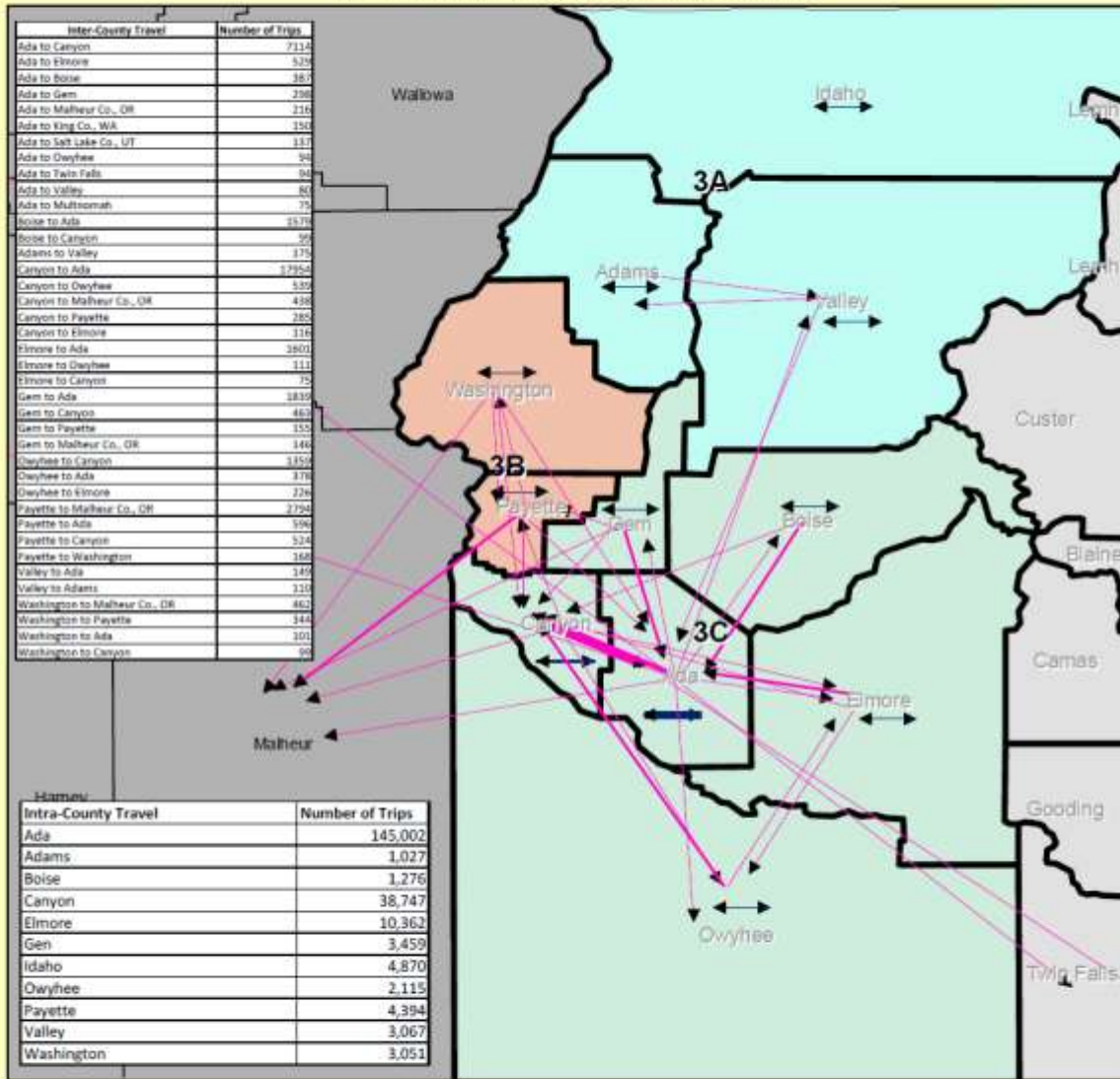
Mobility and Transportation



Moving People



**Figure 2-9:
DISTRICT 3
ESTIMATED TRAVEL PATTERNS
AVERAGE DAILY TRIPS
US CENSUS JOURNEY TO WORK DATA**



Number of Inter-County Trips

- 0 - 1000
- 1001 - 5000
- 5001 - 10000
- 10001 & Greater

Number of Intra-County Trips

- ↔ 0 - 20000
- ↔ 20001 - 40000
- ↔ 40001 - 80000
- ↔ 80001 & Greater

N

0 5 10 20 30 Miles

Prepared for:

Prepared by: KPH Group, Inc.

Source: 2000 Census Bureau and the Idaho Transportation Department

Figure 2-10

3C Local Mobility Management Network

Number of Workers Age 16 and Older
That Drive Alone to Get to Work

Population Estimates 2008 (Claritas)

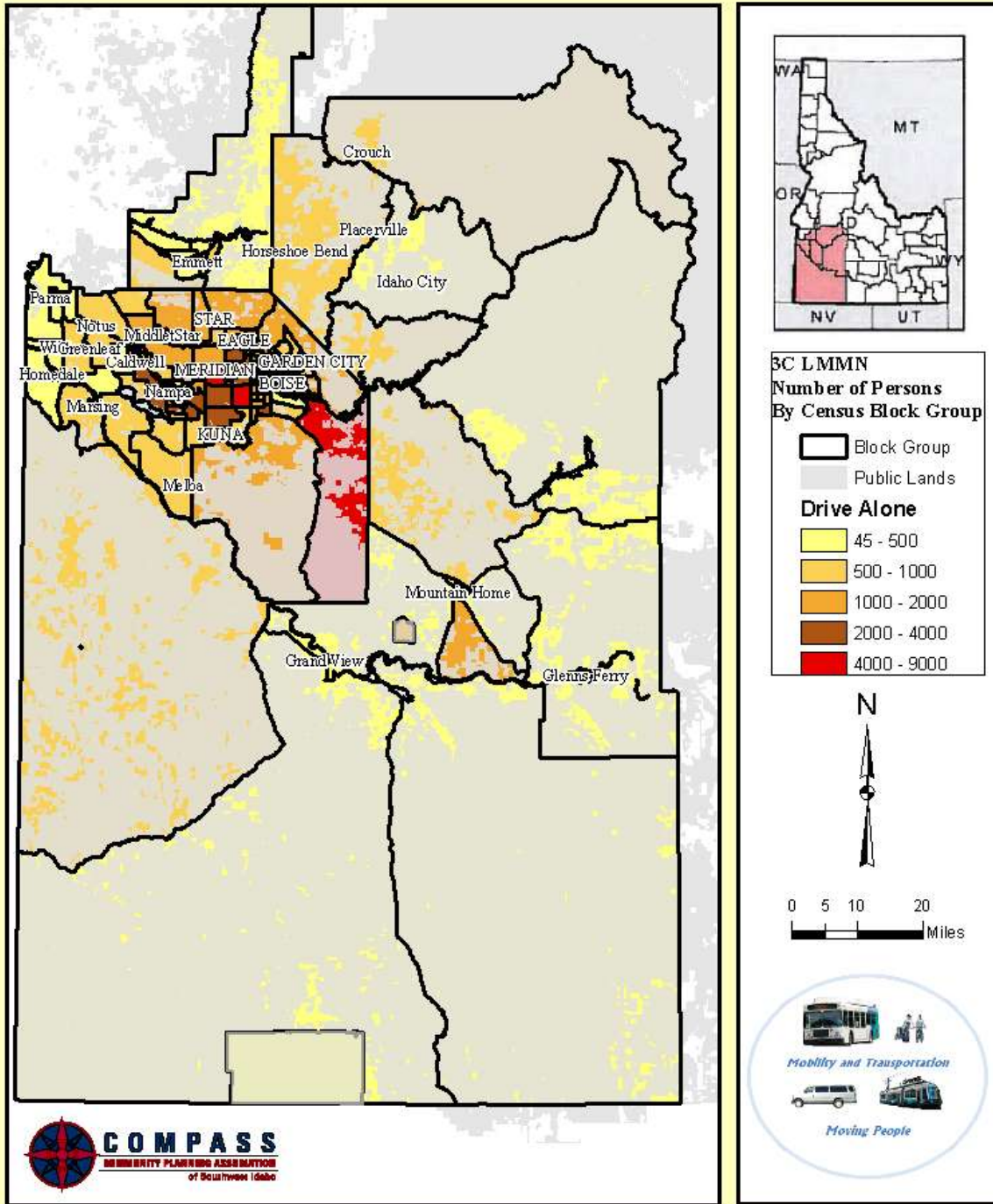


Figure 2-11

3C Local Mobility Management Network

Number of Workers Age 16 and Older That Carpool to Get to Work

Population Estimates 2008 (Claritas)

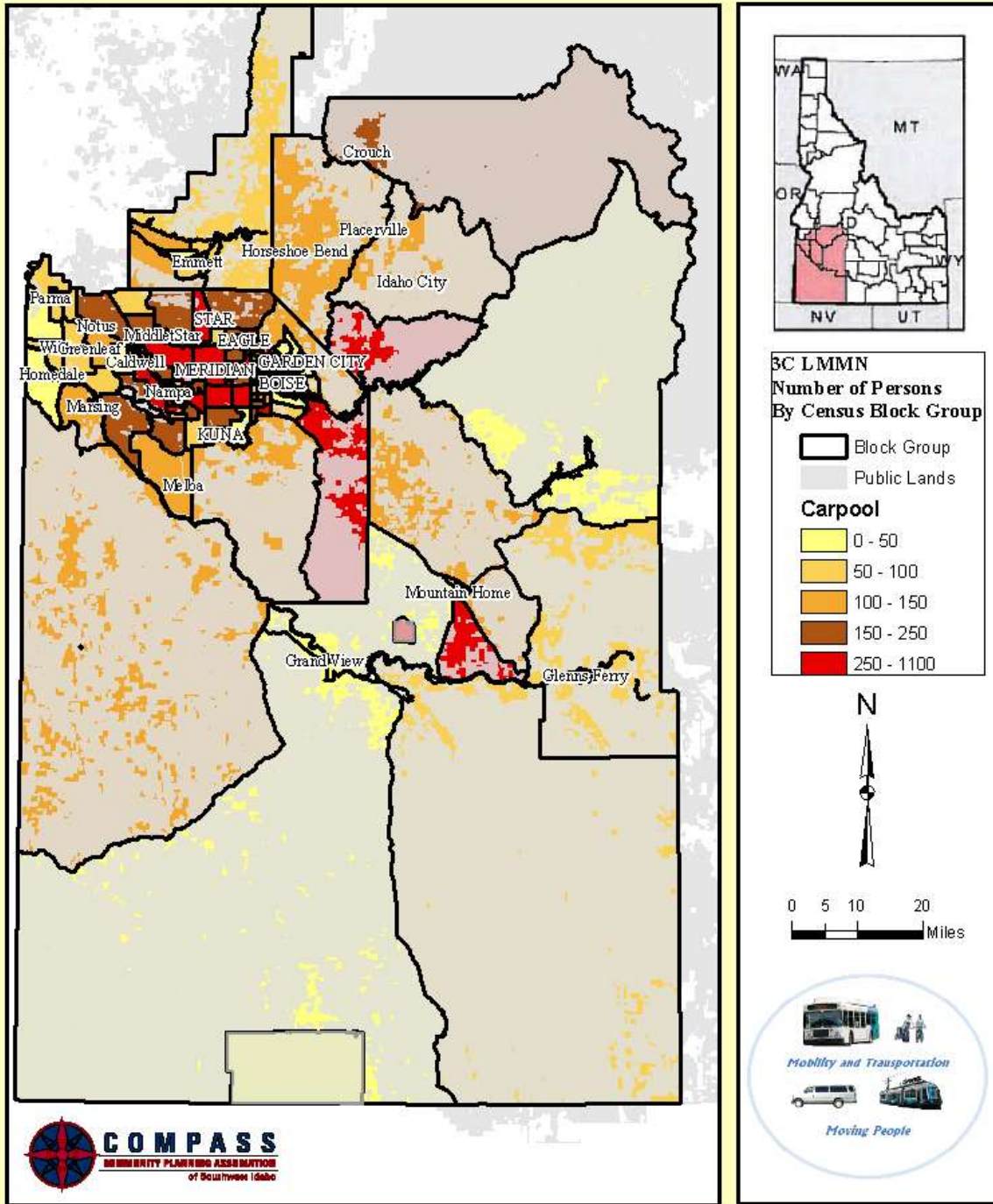
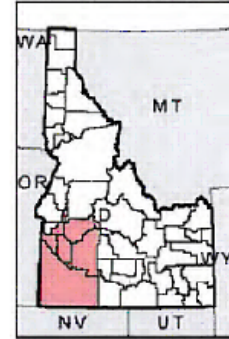
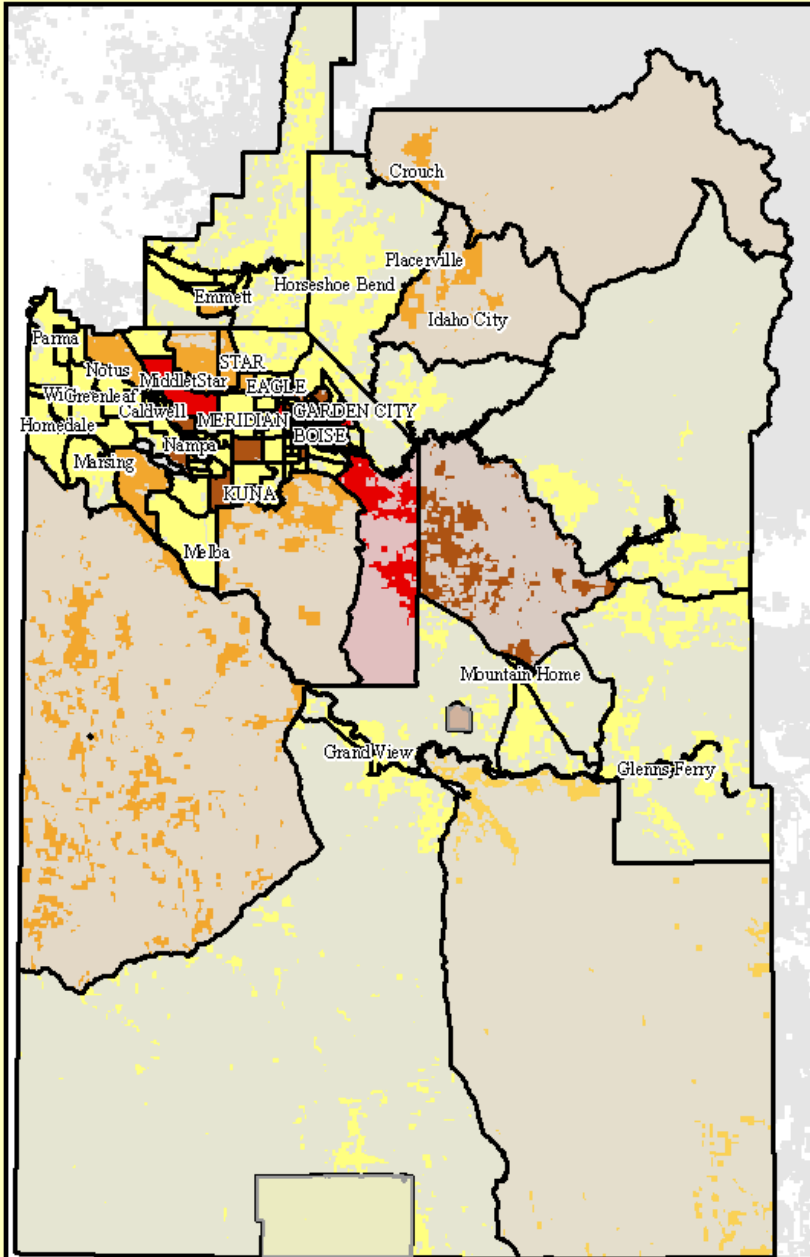


Figure 2-12

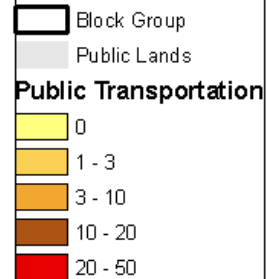
3C Local Mobility Management Network

Number of Workers Age 16 and Older That Use Public Transportation to Get to Work

Population Estimates 2008 (Claritas)



3C LMMN
Number of Persons
By Census Block Group



N



0 5 10 20
Miles



Mobility and Transportation



Moving People

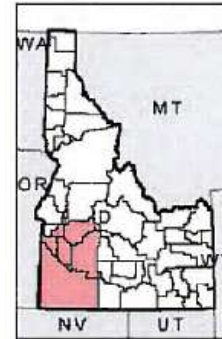
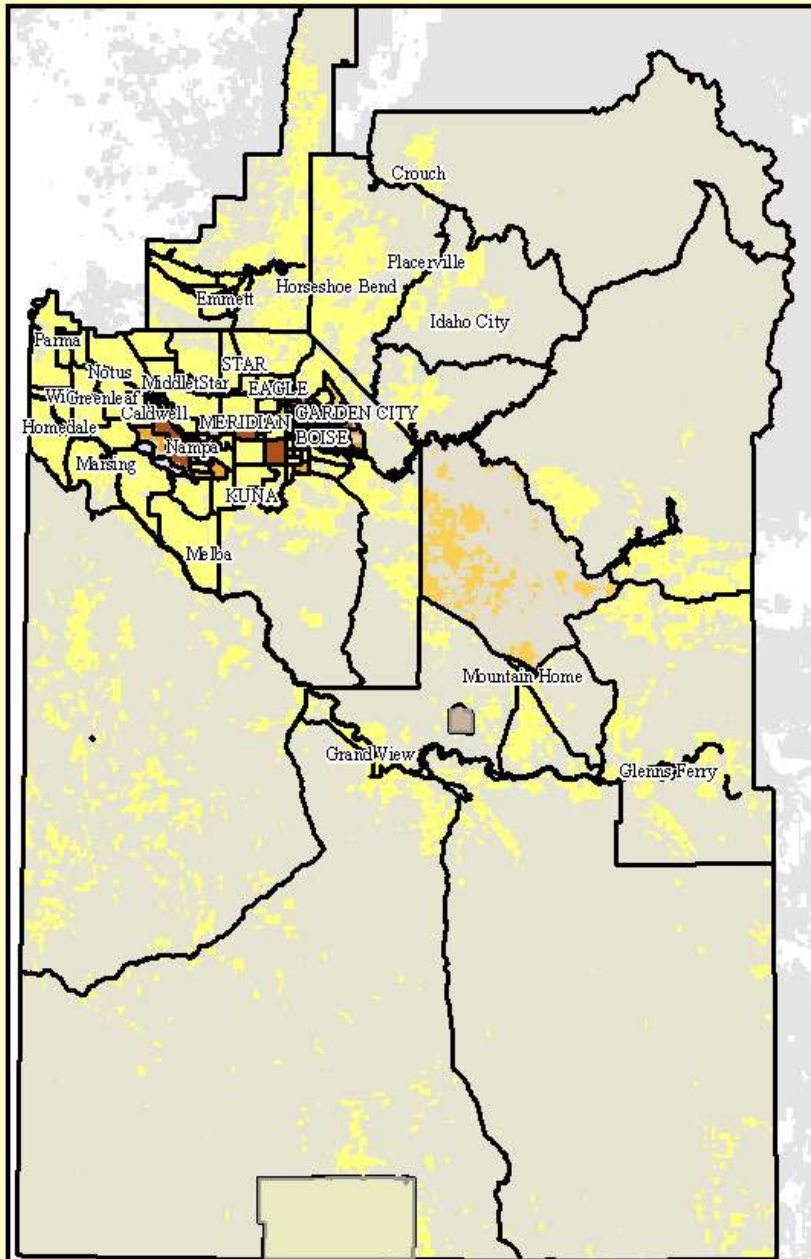


Figure 2-13

3C Local Mobility Management Network

Number of Workers Age 16 and Older That Use a Bicycle to Get to Work

Population Estimates 2008 (Claritas)



3C LMMN
Number of Persons
By Census Block Group

- Block Group
- Public Lands

Bicycle

- 0 - 5
- 5 - 10
- 10 - 15
- 15 - 50
- 50 - 90

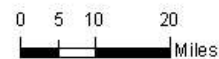


Figure 2-14

3C Local Mobility Management Network

Number of Workers Age 16 and Older That Walk to Get to Work

Population Estimates 2008 (Claritas)

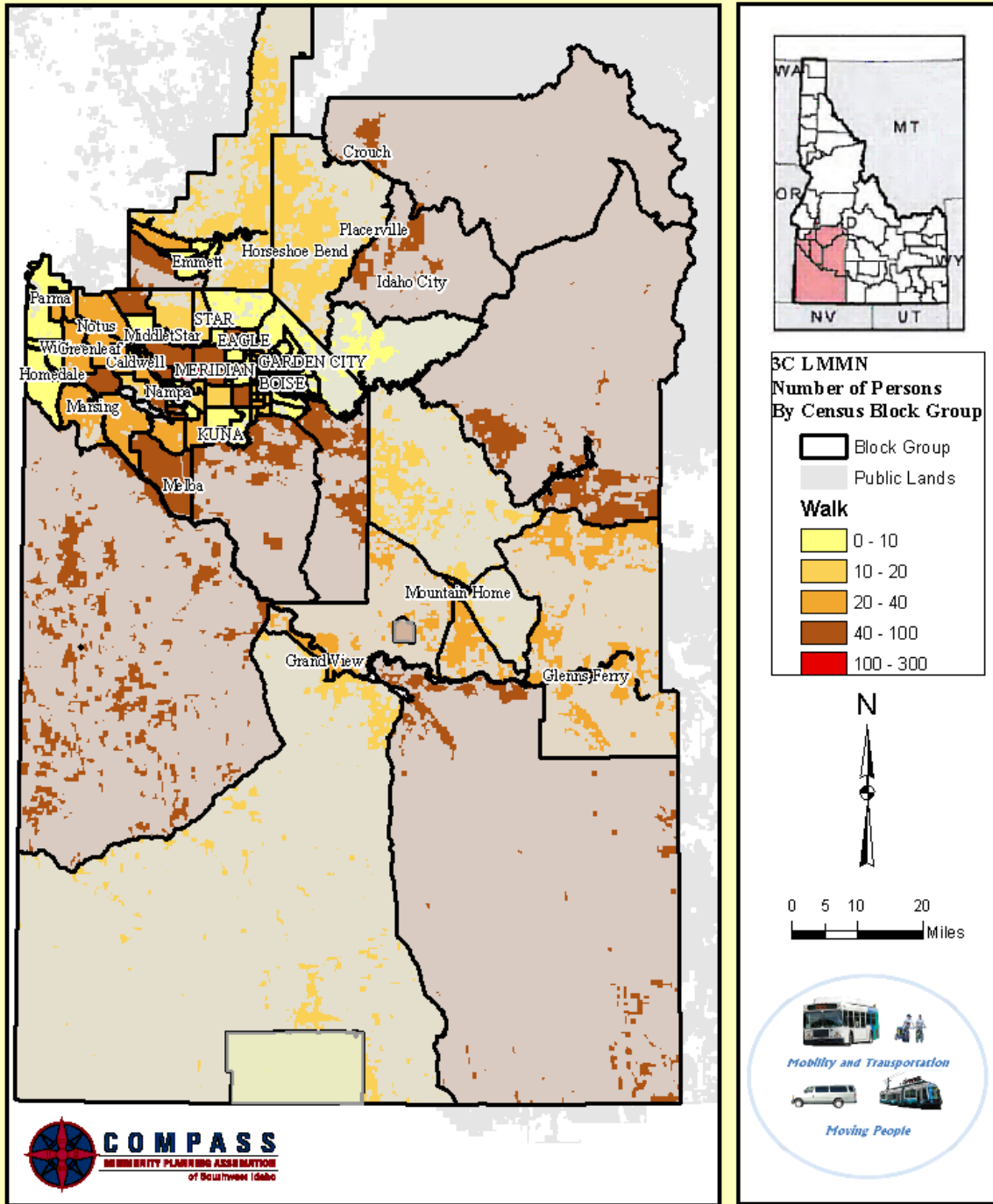
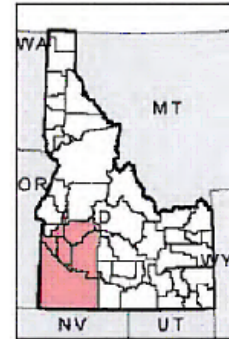
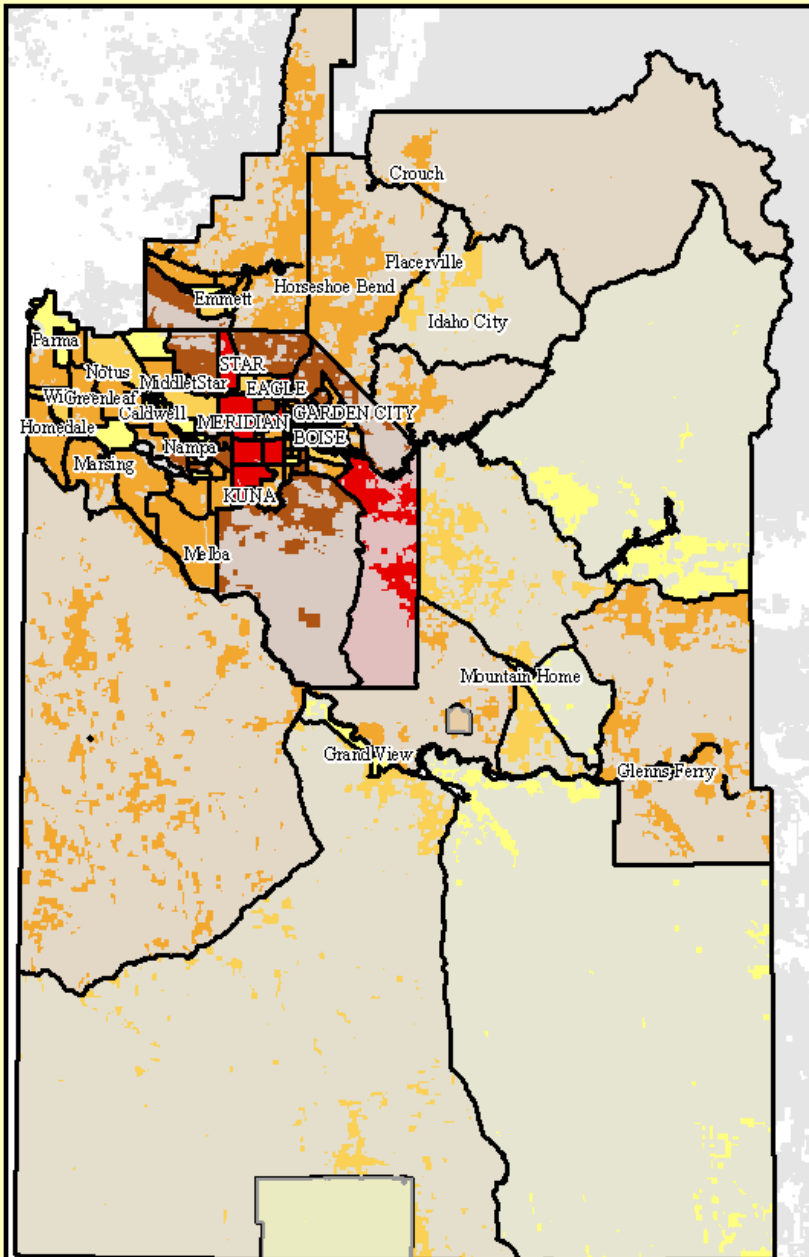


Figure 2-15

3C Local Mobility Management Network Number of Workers Age 16 and Older That Work at Home

Population Estimates 2008 (Claritas)



3C LMMN
Number of Persons
By Census Block Group

- Block Group
- Public Lands
- Work at Home**
 - 0 - 20
 - 20 - 40
 - 40 - 100
 - 100 - 200
 - 200 - 500

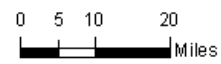


Figure 2-16

3C Local Mobility Management Network

Number of Workers Age 16 and Older
Average Travel Time to Work (In Minutes)

Population Estimates 2008 (Claritas)

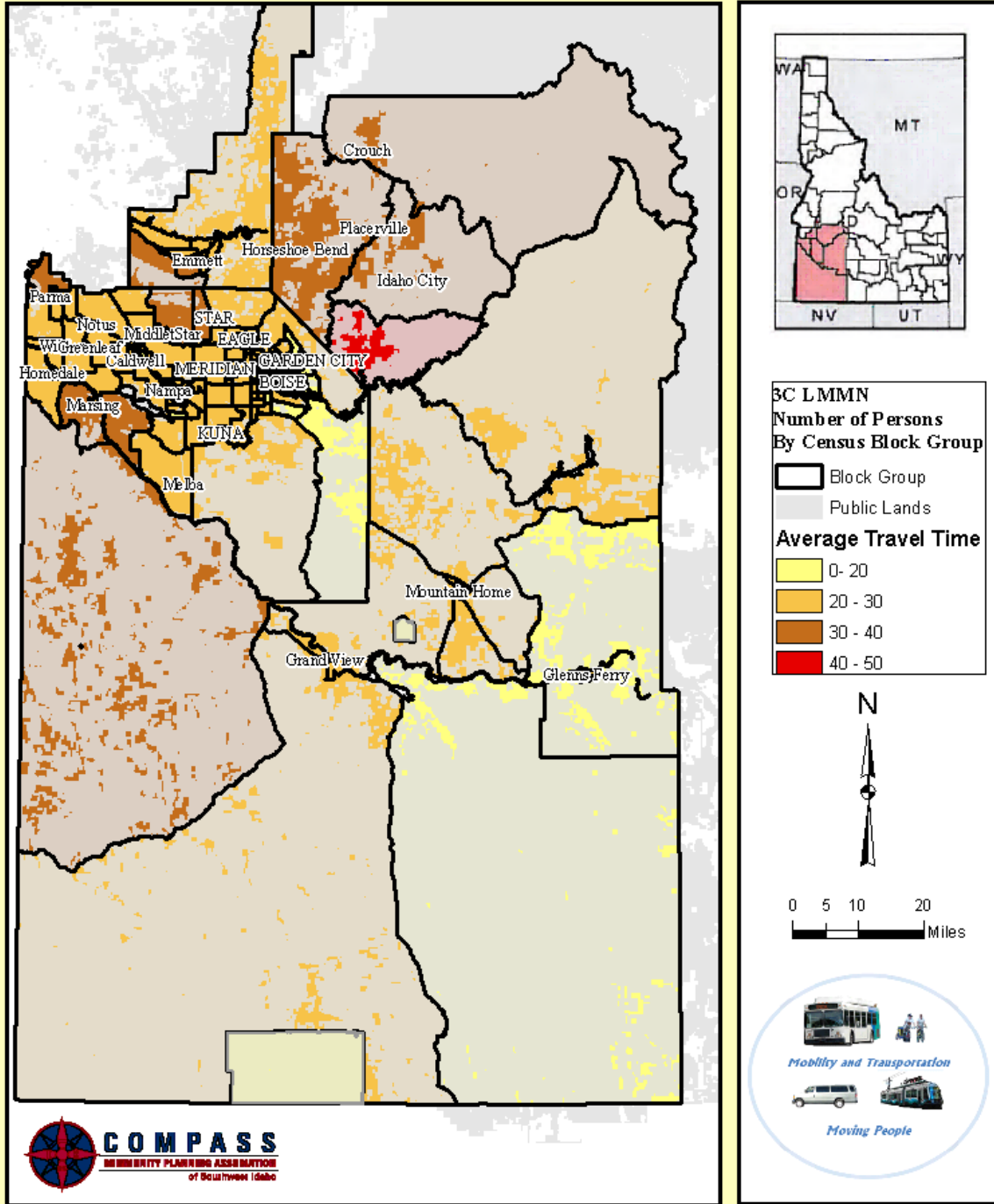


Figure 2-17

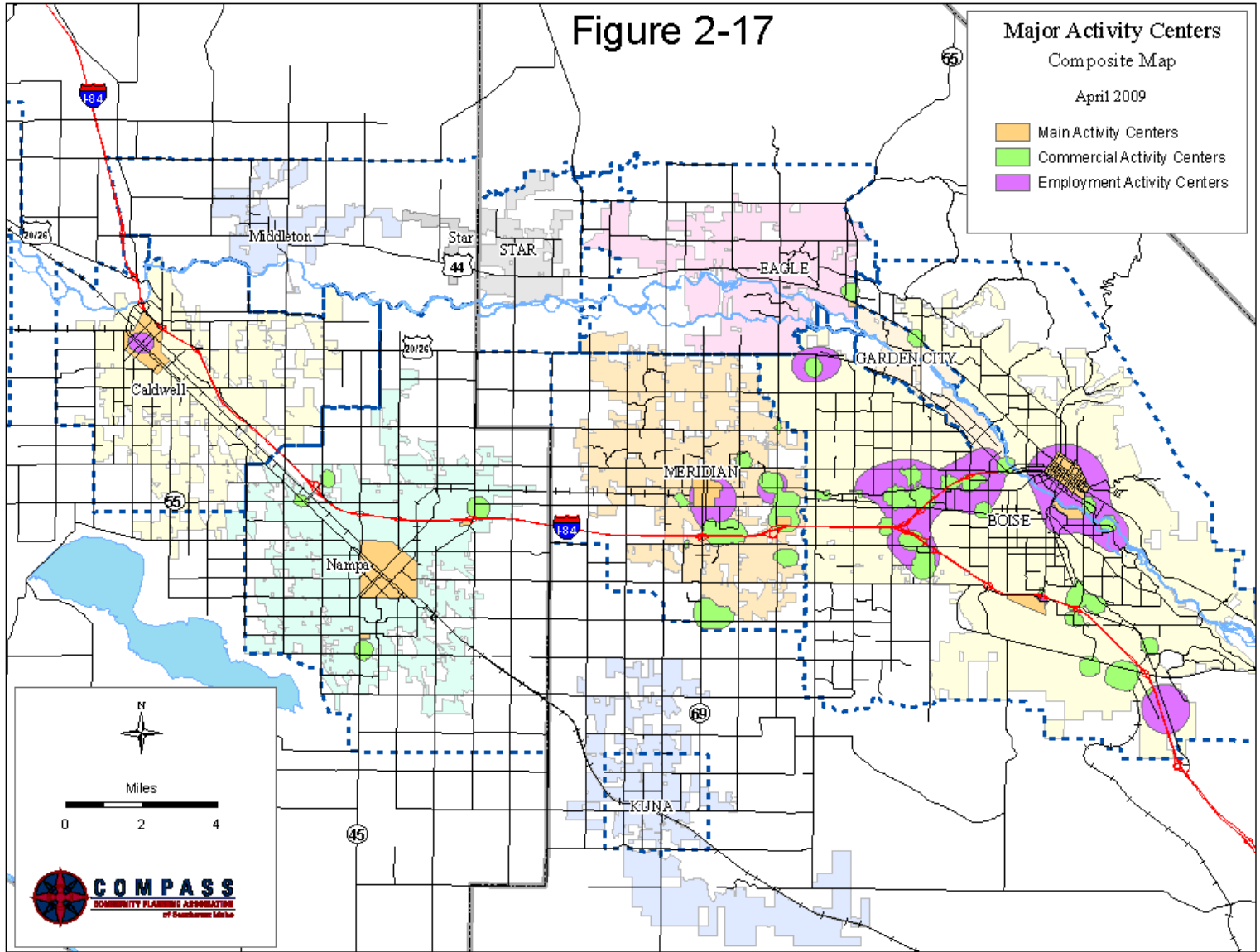
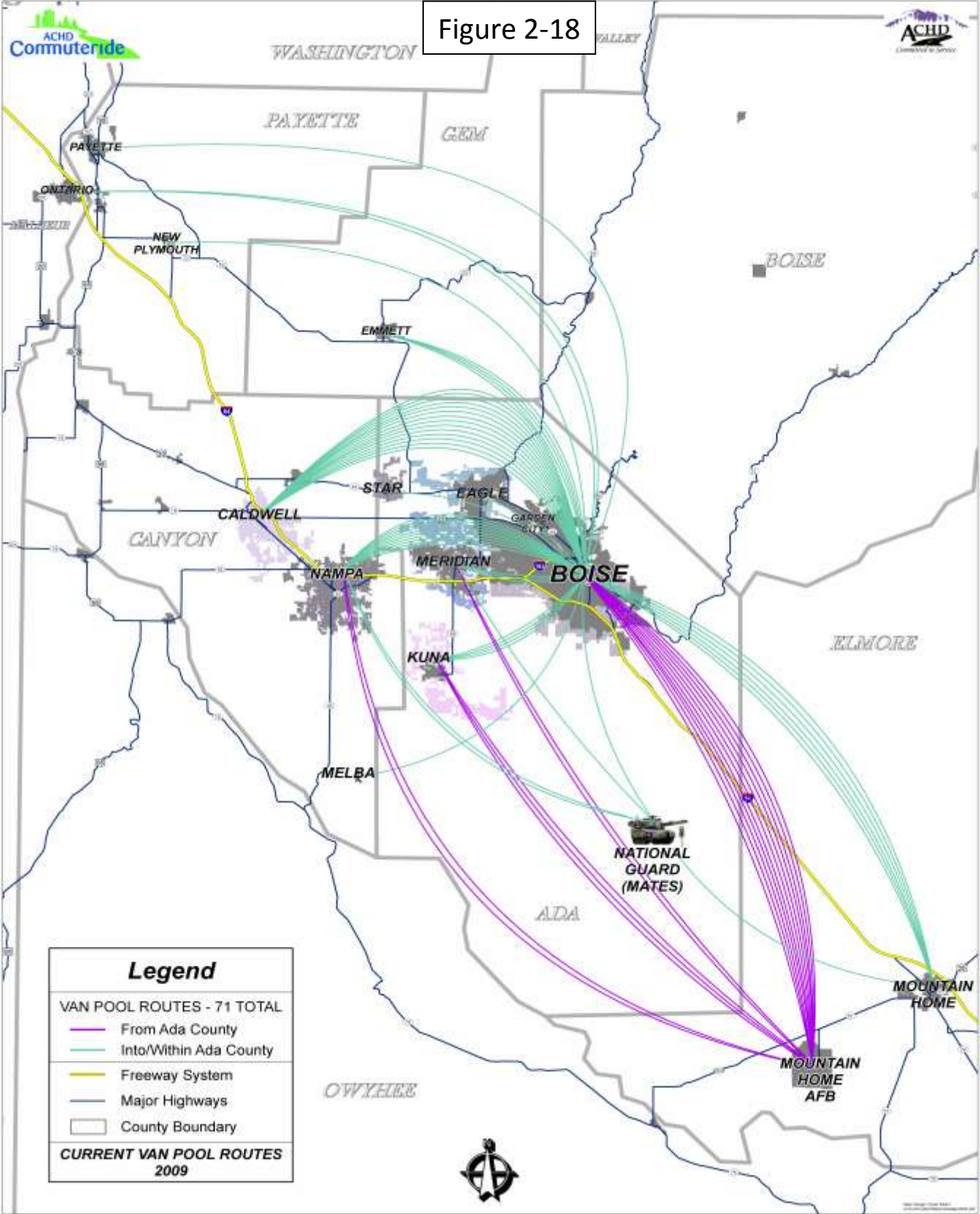


Figure 2-18

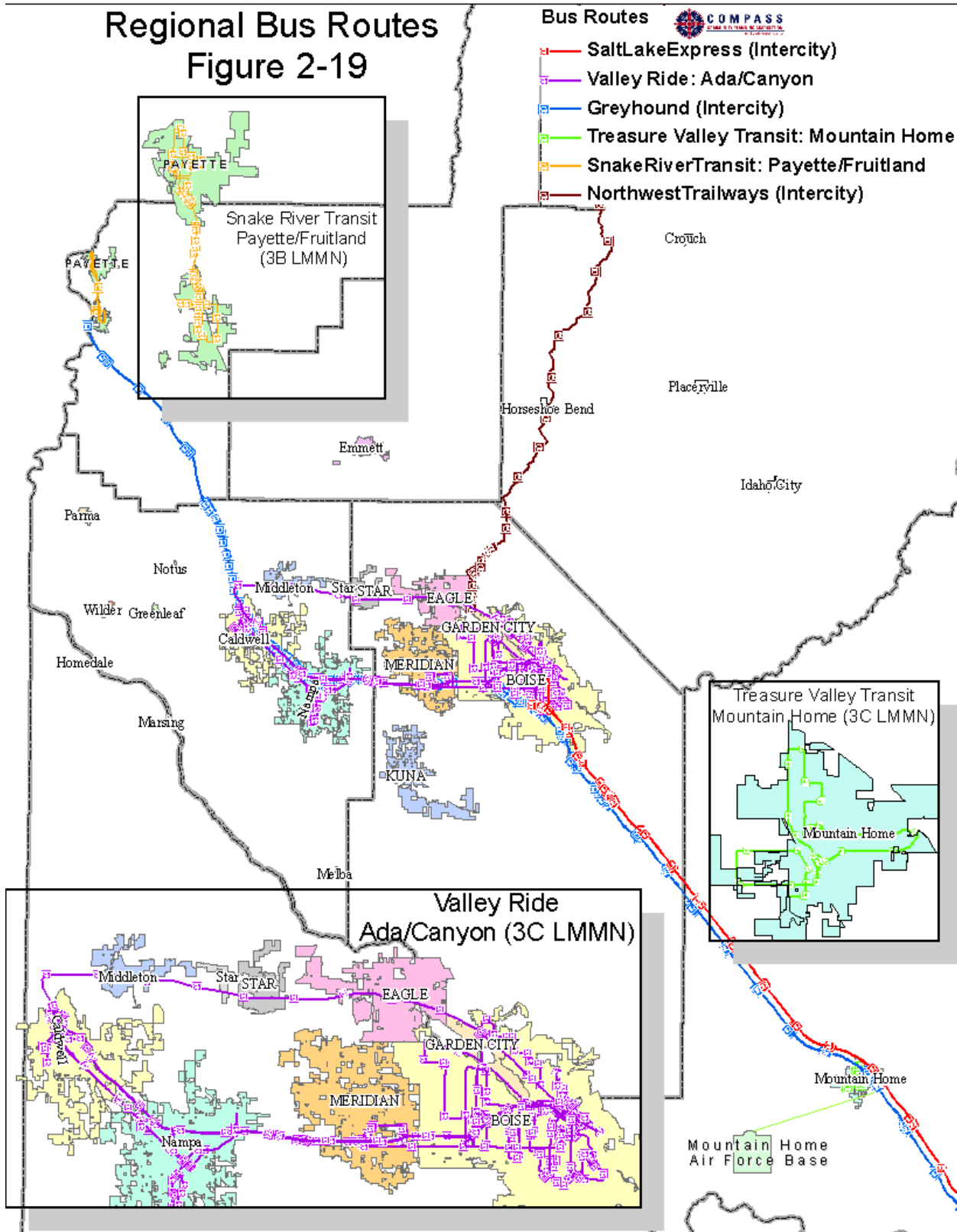


Regional Bus Routes Figure 2-19

Bus Routes



- Salt Lake Express (Intercity)
- Valley Ride: Ada/Canyon
- Greyhound (Intercity)
- Treasure Valley Transit: Mountain Home
- Snake River Transit: Payette/Fruitland
- Northwest Trailways (Intercity)



Appendix F: Supplemental Information

Figure 3-1: Valley Transit Route Map



Figure 3-2: Treasure Valley Transit Mountain Home Route Map

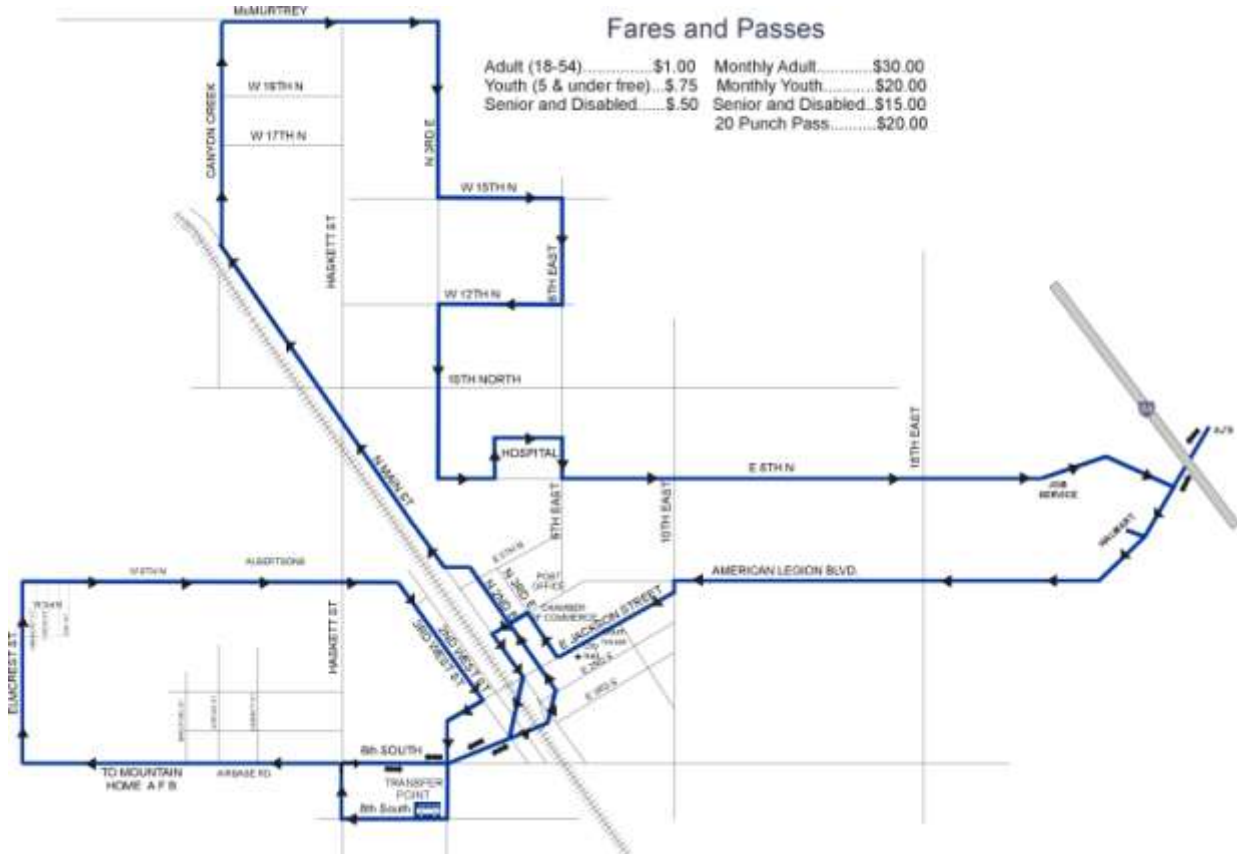


Figure 3-3: Treasure Valley Transit Mountain Home Air Force Base Route Map



Figure 3-4: Greyhound #500 Schedule

SALT LAKE CITY - BOISE - PORTLAND
TABLE 500

Carrier	SCHEDULE NUMBER		1337		1343	
	8-27-08		DEN	PUT	DEN	PUT
	FREQUENCY					
GL	Salt Lake City, UT	MT	LV	12:01		23:45
	Ogden, UT		AR	12:55		00:30
	Ogden, UT		LV	13:05		00:35
	Tremonton, UT		AR	X 13:45	X	01:15
	Tremonton, UT		LV	14:05		01:35
	Burley, ID			16:00		03:30
	Twin Falls, ID		AR	X 16:50		04:20
	Twin Falls, ID		LV	17:30		04:25
	Boise, ID		AR	X 19:45	X	06:40
	Boise, ID		LV	20:50		07:15
	Nampa, ID			21:20		07:45
	Ontario, OR	MT		22:05		08:30
	Baker City, OR	PT	LV	22:25		08:50
	Baker City, OR		AR	X 23:00		09:35
	La Grande, OR			23:50		10:25
	Pendleton, OR		AR	00:55		11:30
	Pendleton, OR		LV	01:00		11:35
	Stanfield, OR (Pilot Sta.)		AR	X 01:25	X	11:59
	Stanfield, OR (Pilot Sta.)		LV	02:00		12:35
	The Dalles, OR		AR	03:50		14:25
	The Dalles, OR		LV	03:55		14:30
	Hood River, OR			04:25		15:00
GL	Portland, OR	PT	AR	05:35		16:10

PORTLAND - BOISE - SALT LAKE CITY
TABLE 500

Carrier	SCHEDULE NUMBER		1318		1300	
	8-27-08		PUT	DEN	PUT	DEN
	FREQUENCY					
GL	Portland, OR	PT	LV	12:10		23:45
	Hood River, OR			13:20		00:55
	The Dalles, OR		AR	13:50		01:25
	The Dalles, OR		LV	13:50		01:25
	Stanfield, OR (Pilot Sta.)		AR	15:40	X	03:15
	Stanfield, OR (Pilot Sta.)		LV	16:00		03:35
	Pendleton, OR		AR	16:25		04:00
	Pendleton, OR		LV	16:35		04:05
	La Grande, OR			17:40		05:10
	Baker, OR			18:30		06:00
	Baker, OR	PT	AR	X 19:05	X	06:30
	Ontario, OR	MT		21:25		08:50
	Nampa, ID			22:10		09:35
	Boise, ID		AR	X 22:40	X	10:05
	Boise, ID		LV	23:10		10:35
	Twin Falls, ID		AR	01:25	X	12:50
	Twin Falls, ID		LV	01:35		13:25
	Burley, ID			02:25		14:15
	Tremonton, UT		AR	X 04:20	X	16:10
	Tremonton, UT		LV	04:35		16:25
	Ogden, UT		AR	05:15		17:05
	Ogden, UT		LV	05:20		17:10
GL	Salt Lake City, UT	MT	AR	X 06:05	X	17:55

Appendix G: Sign in Sheet (Outreach Meetings)

①

**Local Mobility Plans:
Community Partnerships, Coordinated Solutions**

Meeting Date: July 21, 2009

Location: Horseshoe Bend City Hall

Meeting Time: 10:00 A.M.

Please Sign In (Print)

NAME	ORGANIZATION	ADDRESS	E-MAIL/PHONE
JEROME MAPP	City of Horseshoe Bend City Planner	1855 DAWLINS DR Bldg	Jerome_mapp@123e.g.com
ERIC DUNSTON	City ENGINEER	1650 S. HOPKINS WAY MERIDIAN	edunston@sunrise-cny.com
TOM TISDALE	COMPASS	800 S. INDUSTRY WAY MERIDIAN	ttsdale@compassidaho.org 208-855-2538 x228
Kelli Fairless	Valley Regional Transit	830 N. main st. meridian	kfairless@valleyregionaltransit.org 846 8547 x4212
Lisa Heaton	COMPASS	800 S Industry Way Meridian	lheaton@compassidaho.org 855-2538, 225
Gloria Chigbrow	Valley Regional Transit	830 N main Suite 230 meridian id	gchigbrow@valleyregionaltransit.org 846-8547 x4218
Walt Satterfield	COMPASS	800 S Industry Way Meridian	Walterfield@compassidaho.org

NAME	ORGANIZATION	ADDRESS	E-MAIL/PHONE
ROD RALPHS	HERITAGE LANDS, LLC	2730 N. GREENLEAF PL MERIDIAN, ID 83646	rjralphs@jr-cthd.com 208.571.3358
D TENNER	P&Z		
XXXXXXXXXX	XXXXXXXXXX		

Meeting Date: July 23, 2009

Location: Emmett City Hall

Meeting Time: 10:A.M.

Please Sign In (Print)

No. 1

NAME	ORGANIZATION	ADDRESS	E-MAIL/PHONE
Krista Cole	Elderly Opportunity Agency	13th N. Washington Emmett ID 83617	Krista@EOA-Idaho.org 365-4461
Leslie Toombs	ACHD	5775 Adams Base, ID 83714	ltoombs@achd.adaid.us 387-6234
Fritz Hallber	Advisory Council SAT	7845 Elmore Rd Fruitland	hallber@idstate.com 402-5242
Brad Hawkins	Gen Co. Dev Services	109 S. McKinley Emmett 83617	brad.hawkins@co.gem.id.us 305-5144
Michael Warner	Gem County	415 E. Main Emmett	Commissioners@co.gem.id.us 305-4561
Liz Honen	COMPASS	8005 Indersby Way Meridian	lhonen@compassid.com 552-2550, 225
Walt Satterfield	COMPASS	11	wsatterfield@compassid.com

John Fairless	Valley Register Transit		
---------------	-------------------------	--	--

Local Mobility Plans: Community Partnerships, Coordinated Solutions

Meeting Date: 7-27-09

Location: Meridian City Hall

Meeting Time: 1:30 p.m.

Please Sign In (Print)

NAME	ORGANIZATION	ADDRESS	E-MAIL/PHONE
DAVID ZAREMBA	MERIDIAN	33 E BROADWAY MERIDIAN, ID 83642	(208) 288-2935 DZAREMBA@MERIDIANCITY.ORG
Katy LEVIN	Stanley	2264 S. Bonito #150 83642	levinkkaty@stanlygroup.com
Bob Bruce	"		
CALEB HOOD	Meridian	33 E. Broadway	884-5533 choode@meridiancity.org

Local Mobility Plans: Community Partnerships, Coordinated Solutions

Meeting Date: July 28, 2009

Location: Council Chambers - City of Mountain Home

Meeting Time: 10:00am

Please Sign In (Print)

NAME	ORGANIZATION	ADDRESS	E-MAIL/PHONE
Bonnie Harper	City of Mountain Home	160 S. 3rd East	bharper@mountain-home.us 208-580-2091
- Susie Culthrop	City of Mountain Home	1150 S Main	208-587-2109 scottlcrp@mountain-home.us
- Wayne Shepherd	City of Mountain Home	1150 S Main, P.O. Box 10	208-587-2108 moonham-home.us wshepherd@

3C Local Mobility Plan Meeting August 4, 2009 PLEASE SIGN-IN

Nampa City Hall, 411 3rd Street South, Nampa, ID

COMPASS monitors attendance in order to assure equal opportunity. We appreciate your cooperation by voluntarily furnishing us with the information outlined in the sign-in sheet. This information will be kept confidential and used only for affirmative action purposes as specified by law (CFR 49.21.9).

Attended	Name (Please print or write clearly)	Address (City, State, Zip)	Email Address	Please check the appropriate boxes (Voluntary)	
	Michael Fuss	411 Third St. So Nampa, ID 83651	fussm@cityofnampa.us	<input type="checkbox"/> Male <input type="checkbox"/> Female <input type="checkbox"/> Disabled	<input type="checkbox"/> Black <input type="checkbox"/> Hispanic <input checked="" type="checkbox"/> White <input type="checkbox"/> NA <input type="checkbox"/> American Indian/Alaskan Native <input type="checkbox"/> Asian/Pacific Islander <input type="checkbox"/> Other
-	Rodney Ashby	" "	ashbyr@cityofnampa.us	<input checked="" type="checkbox"/> Male <input type="checkbox"/> Female <input type="checkbox"/> Disabled	<input type="checkbox"/> Black <input type="checkbox"/> Hispanic <input checked="" type="checkbox"/> White <input type="checkbox"/> NA <input type="checkbox"/> American Indian/Alaskan Native <input type="checkbox"/> Asian/Pacific Islander <input type="checkbox"/> Other
-	Beth Ineck	" "	ineckb@cityofnampa.us	<input type="checkbox"/> Male <input checked="" type="checkbox"/> Female <input type="checkbox"/> Disabled	<input type="checkbox"/> Black <input type="checkbox"/> Hispanic <input type="checkbox"/> White <input type="checkbox"/> NA <input type="checkbox"/> American Indian/Alaskan Native <input type="checkbox"/> Asian/Pacific Islander <input type="checkbox"/> Other
	Clair Bowman	City of Nampa	bowmanem@cityofnampa.us	<input type="checkbox"/> Male <input type="checkbox"/> Female <input type="checkbox"/> Disabled	<input type="checkbox"/> Black <input type="checkbox"/> Hispanic <input checked="" type="checkbox"/> White <input type="checkbox"/> NA <input type="checkbox"/> American Indian/Alaskan Native <input type="checkbox"/> Asian/Pacific Islander <input type="checkbox"/> Other
				<input type="checkbox"/> Male <input type="checkbox"/> Female <input type="checkbox"/> Disabled	<input type="checkbox"/> Black <input type="checkbox"/> Hispanic <input type="checkbox"/> White <input type="checkbox"/> NA <input type="checkbox"/> American Indian/Alaskan Native <input type="checkbox"/> Asian/Pacific Islander <input type="checkbox"/> Other
				<input type="checkbox"/> Male <input type="checkbox"/> Female <input type="checkbox"/> Disabled	<input type="checkbox"/> Black <input type="checkbox"/> Hispanic <input type="checkbox"/> White <input type="checkbox"/> NA <input type="checkbox"/> American Indian/Alaskan Native <input type="checkbox"/> Asian/Pacific Islander <input type="checkbox"/> Other
				<input type="checkbox"/> Male <input type="checkbox"/> Female <input type="checkbox"/> Disabled	<input type="checkbox"/> Black <input type="checkbox"/> Hispanic <input type="checkbox"/> White <input type="checkbox"/> NA <input type="checkbox"/> American Indian/Alaskan Native <input type="checkbox"/> Asian/Pacific Islander <input type="checkbox"/> Other

Title VI of the Civil Rights Act of 1964, as amended, provides that no person shall on the ground of race, color, national origin, sex, age, and handicap/disability, be excluded from participation in, be denied benefits of, or be subject to discrimination under any program or activity receiving Federal financial assistance. If you believe you have been excluded or discriminated against in any of these areas, you may file a complaint no later than 180 days after the alleged act of discrimination with the Community Planning Association, Idaho Transportation Department, and/or the Federal Highway Administration US Department of Transportation.

3C Local Mobility Plan Meeting August 4, 2009

PLEASE SIGN-IN

~~Nampa City Hall, 411 3rd Street South, Nampa, ID~~
Caldwell, ID

COMPASS monitors attendance in order to assure equal opportunity. We appreciate your cooperation by voluntarily furnishing us with the information outlined in the sign-in sheet. This information will be kept confidential and used only for affirmative action purposes as specified by law (CFR 49.21.9).

Attended	Name (Please print or write clearly)	Address (City, State, Zip)	Email Address	Please check the appropriate boxes (Voluntary)	
✓	Tosha Morales	Caldwell, Id	ccoatosha@yahoo.com	<input type="checkbox"/> Male <input checked="" type="checkbox"/> Female <input type="checkbox"/> Disabled	<input type="checkbox"/> Black <input type="checkbox"/> Hispanic <input checked="" type="checkbox"/> White <input type="checkbox"/> NA <input type="checkbox"/> American Indian/Alaskan Native <input type="checkbox"/> Asian/Pacific Islander <input type="checkbox"/> Other
✓	Edna Portenier	Parma ID 83660	edna.portenier@yahoo.com	<input type="checkbox"/> Male <input checked="" type="checkbox"/> Female <input type="checkbox"/> Disabled	<input type="checkbox"/> Black <input type="checkbox"/> Hispanic <input checked="" type="checkbox"/> White <input type="checkbox"/> NA <input type="checkbox"/> American Indian/Alaskan Native <input type="checkbox"/> Asian/Pacific Islander <input type="checkbox"/> Other
✓	Eileen Waddell	5125 Hwy 95 Fruitland, ID 83619	ewaddell@fmtc.com	<input type="checkbox"/> Male <input checked="" type="checkbox"/> Female <input type="checkbox"/> Disabled	<input type="checkbox"/> Black <input type="checkbox"/> Hispanic <input checked="" type="checkbox"/> White <input type="checkbox"/> NA <input type="checkbox"/> American Indian/Alaskan Native <input type="checkbox"/> Asian/Pacific Islander <input type="checkbox"/> Other
✓	Bill JORDAN	Caldwell, ID	billj@treasurevalleytransit.com	<input checked="" type="checkbox"/> Male <input type="checkbox"/> Female <input type="checkbox"/> Disabled	<input type="checkbox"/> Black <input type="checkbox"/> Hispanic <input checked="" type="checkbox"/> White <input type="checkbox"/> NA <input type="checkbox"/> American Indian/Alaskan Native <input type="checkbox"/> Asian/Pacific Islander <input type="checkbox"/> Other
✓	Kat J. Dewishyot	3523 E Lindon #115 Caldwell, ID 83619	KJmail@msn.com	<input type="checkbox"/> Male <input checked="" type="checkbox"/> Female <input type="checkbox"/> Disabled	<input type="checkbox"/> Black <input type="checkbox"/> Hispanic <input checked="" type="checkbox"/> White <input type="checkbox"/> NA <input type="checkbox"/> American Indian/Alaskan Native <input type="checkbox"/> Asian/Pacific Islander <input type="checkbox"/> Other
✓	Krista Cole	For Caldwell Senior Center, etc EOA, Emmett, ID 83617	Kcenter59@msn.com	<input type="checkbox"/> Male <input checked="" type="checkbox"/> Female <input type="checkbox"/> Disabled	<input type="checkbox"/> Black <input type="checkbox"/> Hispanic <input checked="" type="checkbox"/> White <input type="checkbox"/> NA <input type="checkbox"/> American Indian/Alaskan Native <input type="checkbox"/> Asian/Pacific Islander <input type="checkbox"/> Other
✓	Christina Potts	2034 College Ave Caldwell, ID 83605	microntechp@yahoo.com	<input type="checkbox"/> Male <input checked="" type="checkbox"/> Female <input type="checkbox"/> Disabled	<input type="checkbox"/> Black <input type="checkbox"/> Hispanic <input checked="" type="checkbox"/> White <input type="checkbox"/> NA <input type="checkbox"/> American Indian/Alaskan Native <input type="checkbox"/> Asian/Pacific Islander <input type="checkbox"/> Other

Title VI of the Civil Rights Act of 1964, as amended, provides that no person shall on the ground of race, color, national origin, sex, age, and handicap/disability, be excluded from participation in, be denied benefits of, or be subject to discrimination under any program or activity receiving Federal financial assistance. If you believe you have been excluded or discriminated against in any of these areas, you may file a complaint no later than 180 days after the alleged act of discrimination with the Community Planning Association, Idaho Transportation Department, and/or the Federal Highway Administration US Department of Transportation.

3C Local Mobility Plan Meeting Focus Group August 6, 2009

PLEASE SIGN-IN

Boise City Hall, 150 N. Capitol Blvd., Boise, ID

COMPASS monitors attendance in order to assure equal opportunity. We appreciate your cooperation by voluntarily furnishing us with the information outlined in the sign-in sheet. This information will be kept confidential and used only for affirmative action purposes as specified by law (CFR 49.21.9).

Attended	Name (Please print or write clearly)	Address (City, State, Zip)	Email Address	Please check the appropriate boxes (Voluntary)	
-	BRIAN SHEA	802 E RIVERPARK LN BOISE, ID 83706	brian.shea@cityofboise.org	<input checked="" type="checkbox"/> Male <input type="checkbox"/> Female <input type="checkbox"/> Disabled	<input type="checkbox"/> Black <input type="checkbox"/> Hispanic <input checked="" type="checkbox"/> White <input type="checkbox"/> NA <input type="checkbox"/> American Indian/Alaskan Native <input type="checkbox"/> Asian/Pacific Islander <input type="checkbox"/> Other
	Gloria Chugbrow	830 N Math Meridian, ID 83642	gchugbrow@valleyregiontransit.org	<input type="checkbox"/> Male <input checked="" type="checkbox"/> Female <input type="checkbox"/> Disabled	<input type="checkbox"/> Black <input type="checkbox"/> Hispanic <input type="checkbox"/> White <input type="checkbox"/> NA <input type="checkbox"/> American Indian/Alaskan Native <input type="checkbox"/> Asian/Pacific Islander <input type="checkbox"/> Other
	Kirk Montgomery	5714 Fairview Ave Boise ID 83706	Kmontgomery@cableone.net	<input type="checkbox"/> Male <input type="checkbox"/> Female <input type="checkbox"/> Disabled	<input type="checkbox"/> Black <input type="checkbox"/> Hispanic <input type="checkbox"/> White <input type="checkbox"/> NA <input type="checkbox"/> American Indian/Alaskan Native <input type="checkbox"/> Asian/Pacific Islander <input type="checkbox"/> Other
-	Patricia Nilsson	150 N. Capitol Blvd Boise ID 83701	pnilsson@cityofboise.org	<input type="checkbox"/> Male <input checked="" type="checkbox"/> Female <input type="checkbox"/> Disabled	<input type="checkbox"/> Black <input type="checkbox"/> Hispanic <input checked="" type="checkbox"/> White <input type="checkbox"/> NA <input type="checkbox"/> American Indian/Alaskan Native <input type="checkbox"/> Asian/Pacific Islander <input type="checkbox"/> Other
				<input type="checkbox"/> Male <input type="checkbox"/> Female <input type="checkbox"/> Disabled	<input type="checkbox"/> Black <input type="checkbox"/> Hispanic <input type="checkbox"/> White <input type="checkbox"/> NA <input type="checkbox"/> American Indian/Alaskan Native <input type="checkbox"/> Asian/Pacific Islander <input type="checkbox"/> Other
				<input type="checkbox"/> Male <input type="checkbox"/> Female <input type="checkbox"/> Disabled	<input type="checkbox"/> Black <input type="checkbox"/> Hispanic <input type="checkbox"/> White <input type="checkbox"/> NA <input type="checkbox"/> American Indian/Alaskan Native <input type="checkbox"/> Asian/Pacific Islander <input type="checkbox"/> Other

Title VI of the Civil Rights Act of 1964, as amended, provides that no person shall on the ground of race, color, national origin, sex, age, and handicap/disability, be excluded from participation in, be denied benefits of, or be subject to discrimination under any program or activity receiving Federal financial assistance. If you believe you have been excluded or discriminated against in any of these areas, you may file a complaint no later than 180 days after the alleged act of discrimination with the Community Planning Association, Idaho Transportation Department, and/or the Federal Highway Administration US Department of Transportation.

**3C Local Mobility Plan Meeting Focus Group August 6, 2009
PLEASE SIGN-IN**

Boise City Hall, 150 N. Capitol Blvd., Boise, ID

COMPASS monitors attendance in order to assure equal opportunity. We appreciate your cooperation by voluntarily furnishing us with the information outlined in the sign-in sheet. This information will be kept confidential and used only for affirmative action purposes as specified by law (CFR 49.21.9).

Attended	Name (Please print or write clearly)	Address (City, State, Zip)	Email Address	Please check the appropriate boxes (Voluntary)	
-	Ruth J. Jones	431 W. State St, Eagle, ID 83616	ruthjjones2@cablone.net	<input type="checkbox"/> Male <input checked="" type="checkbox"/> Female <input type="checkbox"/> Disabled	<input type="checkbox"/> Black <input type="checkbox"/> Hispanic <input type="checkbox"/> White <input checked="" type="checkbox"/> NA <input type="checkbox"/> American Indian/Alaskan Native <input type="checkbox"/> Asian/Pacific Islander <input type="checkbox"/> Other
-	Susan Bradley	371 W Washington Boise ID	sbradley@ieb.idaho.gov	<input type="checkbox"/> Male <input checked="" type="checkbox"/> Female <input type="checkbox"/> Disabled	<input type="checkbox"/> Black <input type="checkbox"/> Hispanic <input checked="" type="checkbox"/> White <input type="checkbox"/> NA <input type="checkbox"/> American Indian/Alaskan Native <input type="checkbox"/> Asian/Pacific Islander <input type="checkbox"/> Other
-	Karen Gallagher	CITY OF BOISE P.O. BOX 500 BOISE ID 83701-0500	kgallagher@cityofboise.org	<input type="checkbox"/> Male <input checked="" type="checkbox"/> Female <input type="checkbox"/> Disabled	<input type="checkbox"/> Black <input type="checkbox"/> Hispanic <input type="checkbox"/> White <input type="checkbox"/> NA <input type="checkbox"/> American Indian/Alaskan Native <input type="checkbox"/> Asian/Pacific Islander <input type="checkbox"/> Other
-	Jim Cecil	121 N. 9th Street, Suite 501 Boise, ID 83702	scecil@cedhouse.com	<input checked="" type="checkbox"/> Male <input type="checkbox"/> Female <input type="checkbox"/> Disabled	<input type="checkbox"/> Black <input type="checkbox"/> Hispanic <input checked="" type="checkbox"/> White <input type="checkbox"/> NA <input type="checkbox"/> American Indian/Alaskan Native <input type="checkbox"/> Asian/Pacific Islander <input type="checkbox"/> Other
-	Jeff Weston	1104 Beryl Blvd	cweston@cityofboise.org	<input type="checkbox"/> Male <input type="checkbox"/> Female <input type="checkbox"/> Disabled	<input type="checkbox"/> Black <input type="checkbox"/> Hispanic <input checked="" type="checkbox"/> White <input type="checkbox"/> NA <input type="checkbox"/> American Indian/Alaskan Native <input type="checkbox"/> Asian/Pacific Islander <input type="checkbox"/> Other
-	Leslie Felton-Jue	5235 W Keybridge Dr Boise ID 83703	leslie@psalm121.org	<input type="checkbox"/> Male <input checked="" type="checkbox"/> Female <input type="checkbox"/> Disabled	<input type="checkbox"/> Black <input type="checkbox"/> Hispanic <input checked="" type="checkbox"/> White <input type="checkbox"/> NA <input type="checkbox"/> American Indian/Alaskan Native <input type="checkbox"/> Asian/Pacific Islander <input type="checkbox"/> Other
-	Julie Klocke	4446 N. Contour Wy Boise ID 83703	president@collistercna.org	<input type="checkbox"/> Male <input type="checkbox"/> Female <input type="checkbox"/> Disabled	<input type="checkbox"/> Black <input type="checkbox"/> Hispanic <input type="checkbox"/> White <input type="checkbox"/> NA <input type="checkbox"/> American Indian/Alaskan Native <input type="checkbox"/> Asian/Pacific Islander <input type="checkbox"/> Other

Title VI of the Civil Rights Act of 1964, as amended, provides that no person shall on the ground of race, color, national origin, sex, age, and handicap/disability, be excluded from participation in, be denied benefits of, or be subject to discrimination under any program or activity receiving Federal financial assistance. If you believe you have been excluded or discriminated against in any of these areas, you may file a complaint no later than 180 days after the alleged act of discrimination with the Community Planning Association, Idaho Transportation Department, and/or the Federal Highway Administration US Department of Transportation.

Appendix H: Sign in Sheet (Sponsor Group Meeting)

10 am - 12:00
3C Local Mobility Plan Meeting August 17, 2009, 5 pm - 7 pm
PLEASE SIGN-IN

College of Western Idaho, 5500 East University Way, Nampa, ID

COMPASS monitors attendance in order to assure equal opportunity. We appreciate your cooperation by voluntarily furnishing us with the information outlined in the sign-in sheet. This information will be kept confidential and used only for affirmative action purposes as specified by law (CFR 49.21.9).

Attended	Name (Please print or write clearly)	Address (City, State, Zip)	Email Address	Please check the appropriate boxes (Voluntary)	
	BRIAN SHEA	3311 W. STATE BOISE, ID	brian.shea@idstate.edu	<input checked="" type="checkbox"/> Male <input type="checkbox"/> Female <input type="checkbox"/> Disabled	<input type="checkbox"/> Black <input type="checkbox"/> Hispanic <input checked="" type="checkbox"/> White <input type="checkbox"/> NA <input type="checkbox"/> American Indian/Alaskan Native <input type="checkbox"/> Asian/Pacific Islander <input type="checkbox"/> Other
	Heather Wheeler		hmwheeler@hotmail.com	<input type="checkbox"/> Male <input checked="" type="checkbox"/> Female <input type="checkbox"/> Disabled	<input type="checkbox"/> Black <input type="checkbox"/> Hispanic <input checked="" type="checkbox"/> White <input type="checkbox"/> NA <input type="checkbox"/> American Indian/Alaskan Native <input type="checkbox"/> Asian/Pacific Islander <input type="checkbox"/> Other
	AARP Dede Shelton	3080 E. Gentry Way - Suite 100 Meridian	dshelton@aarp.org	<input type="checkbox"/> Male <input type="checkbox"/> Female <input type="checkbox"/> Disabled	<input type="checkbox"/> Black <input type="checkbox"/> Hispanic <input type="checkbox"/> White <input type="checkbox"/> NA <input type="checkbox"/> American Indian/Alaskan Native <input type="checkbox"/> Asian/Pacific Islander <input type="checkbox"/> Other
	DAVID ZAREMBA	33 E. BROADWAY MERIDIAN, ID 83642	DZAREMBA@ MERIDIANCITY.ORG	<input type="checkbox"/> Male <input type="checkbox"/> Female <input type="checkbox"/> Disabled	<input type="checkbox"/> Black <input type="checkbox"/> Hispanic <input type="checkbox"/> White <input type="checkbox"/> NA <input type="checkbox"/> American Indian/Alaskan Native <input type="checkbox"/> Asian/Pacific Islander <input type="checkbox"/> Other
	Bill JORDAN	1136 W. Finch DR NAMPAA ID 83651	BillJ@treasurevalleytransit.com	<input checked="" type="checkbox"/> Male <input type="checkbox"/> Female <input type="checkbox"/> Disabled	<input type="checkbox"/> Black <input type="checkbox"/> Hispanic <input checked="" type="checkbox"/> White <input type="checkbox"/> NA <input type="checkbox"/> American Indian/Alaskan Native <input type="checkbox"/> Asian/Pacific Islander <input type="checkbox"/> Other
	CAES HOOD	33 E. BROADWAY MERIDIAN, ID 83642	chood@meridiancity.org	<input checked="" type="checkbox"/> Male <input type="checkbox"/> Female <input type="checkbox"/> Disabled	<input type="checkbox"/> Black <input type="checkbox"/> Hispanic <input type="checkbox"/> White <input type="checkbox"/> NA <input type="checkbox"/> American Indian/Alaskan Native <input type="checkbox"/> Asian/Pacific Islander <input type="checkbox"/> Other
	Bonnie Harper	160 S. 3rd East Mountain Home, ID 83647	bharper@mountainhome.us	<input type="checkbox"/> Male <input checked="" type="checkbox"/> Female <input type="checkbox"/> Disabled	<input type="checkbox"/> Black <input type="checkbox"/> Hispanic <input checked="" type="checkbox"/> White <input type="checkbox"/> NA <input type="checkbox"/> American Indian/Alaskan Native <input type="checkbox"/> Asian/Pacific Islander <input type="checkbox"/> Other

Title VI of the Civil Rights Act of 1964, as amended, provides that no person shall on the ground of race, color, national origin, sex, age, and handicap/disability, be excluded from participation in, be denied benefits of, or be subject to discrimination under any program or activity receiving Federal financial assistance. If you believe you have been excluded or discriminated against in any of these areas, you may file a complaint no later than 180 days after the alleged act of discrimination with the Community Planning Association, Idaho Transportation Department, and/or the Federal Highway Administration US Department of Transportation.

3C Local Mobility Plan Meeting August 17, 2009, 10 am - 12 pm
PLEASE SIGN-IN

College of Western Idaho, 5500 East University Way, Nampa, ID

COMPASS monitors attendance in order to assure equal opportunity. We appreciate your cooperation by voluntarily furnishing us with the information outlined in the sign-in sheet. This information will be kept confidential and used only for affirmative action purposes as specified by law (CFR 49.21.9).

Attended	Name (Please print or write clearly)	Address (City, State, Zip)	Email Address	Please check the appropriate boxes (Voluntary)	
	Kelli Fairless	830 N. main St. 123D Meridian, ID 83642	kfairless@valleyregionaltransit.org	<input type="checkbox"/> Male <input checked="" type="checkbox"/> Female <input type="checkbox"/> Disabled	<input type="checkbox"/> Black <input type="checkbox"/> Hispanic <input checked="" type="checkbox"/> White <input type="checkbox"/> NA <input type="checkbox"/> American Indian/Alaskan Native <input type="checkbox"/> Asian/Pacific Islander <input type="checkbox"/> Other
	Wendy Howell	6 N Dewey Middleton ID 83644	whowell@middletonidaho.us	<input type="checkbox"/> Male <input checked="" type="checkbox"/> Female <input type="checkbox"/> Disabled	<input type="checkbox"/> Black <input type="checkbox"/> Hispanic <input type="checkbox"/> White <input type="checkbox"/> NA <input type="checkbox"/> American Indian/Alaskan Native <input type="checkbox"/> Asian/Pacific Islander <input type="checkbox"/> Other
	Tyler Welshimer	5320 E Lewis Nampa, ID 83686	norba@clearwire.net	<input checked="" type="checkbox"/> Male <input type="checkbox"/> Female <input type="checkbox"/> Disabled	<input type="checkbox"/> Black <input type="checkbox"/> Hispanic <input checked="" type="checkbox"/> White <input type="checkbox"/> NA <input type="checkbox"/> American Indian/Alaskan Native <input type="checkbox"/> Asian/Pacific Islander <input type="checkbox"/> Other
	Gloria Chigbrow	830 N Main Meridian, ID 83642	gchigbrow@valleyregionaltransit.org	<input type="checkbox"/> Male <input checked="" type="checkbox"/> Female <input type="checkbox"/> Disabled	<input type="checkbox"/> Black <input type="checkbox"/> Hispanic <input checked="" type="checkbox"/> White <input type="checkbox"/> NA <input type="checkbox"/> American Indian/Alaskan Native <input type="checkbox"/> Asian/Pacific Islander <input type="checkbox"/> Other
				<input type="checkbox"/> Male <input type="checkbox"/> Female <input type="checkbox"/> Disabled	<input type="checkbox"/> Black <input type="checkbox"/> Hispanic <input type="checkbox"/> White <input type="checkbox"/> NA <input type="checkbox"/> American Indian/Alaskan Native <input type="checkbox"/> Asian/Pacific Islander <input type="checkbox"/> Other
				<input type="checkbox"/> Male <input type="checkbox"/> Female <input type="checkbox"/> Disabled	<input type="checkbox"/> Black <input type="checkbox"/> Hispanic <input type="checkbox"/> White <input type="checkbox"/> NA <input type="checkbox"/> American Indian/Alaskan Native <input type="checkbox"/> Asian/Pacific Islander <input type="checkbox"/> Other
				<input type="checkbox"/> Male <input type="checkbox"/> Female <input type="checkbox"/> Disabled	<input type="checkbox"/> Black <input type="checkbox"/> Hispanic <input type="checkbox"/> White <input type="checkbox"/> NA <input type="checkbox"/> American Indian/Alaskan Native <input type="checkbox"/> Asian/Pacific Islander <input type="checkbox"/> Other

Title VI of the Civil Rights Act of 1964, as amended, provides that no person shall on the ground of race, color, national origin, sex, age, and handicap/disability, be excluded from participation in, be denied benefits of, or be subject to discrimination under any program or activity receiving Federal financial assistance. If you believe you have been excluded or discriminated against in any of these areas, you may file a complaint no later than 180 days after the alleged act of discrimination with the Community Planning Association, Idaho Transportation Department, and/or the Federal Highway Administration US Department of Transportation.

3C Local Mobility Plan Meeting August 17, 2009, 1 pm – 3 pm
PLEASE SIGN-IN

College of Western Idaho, 5500 East University Way, Nampa, ID

COMPASS monitors attendance in order to assure equal opportunity. We appreciate your cooperation by voluntarily furnishing us with the information outlined in the sign-in sheet. This information will be kept confidential and used only for affirmative action purposes as specified by law (CFR 49.21.9).

Attended	Name (Please print or write clearly)	Address (City, State, Zip)	Email Address	Please check the appropriate boxes (Voluntary)	
X	Tosha Morales	304 N. Kimball Caldwell, ID 83605	cccatosha@yahoo.com	<input type="checkbox"/> Male <input checked="" type="checkbox"/> Female <input type="checkbox"/> Disabled	<input type="checkbox"/> Black <input type="checkbox"/> Hispanic <input checked="" type="checkbox"/> White <input type="checkbox"/> NA <input type="checkbox"/> American Indian/Alaskan Native <input type="checkbox"/> Asian/Pacific Islander <input type="checkbox"/> Other
X	Bruce Schreiner	7470 Astick Rd. Nampa	Coordinator	<input checked="" type="checkbox"/> Male <input type="checkbox"/> Female <input type="checkbox"/> Disabled	<input type="checkbox"/> Black <input type="checkbox"/> Hispanic <input checked="" type="checkbox"/> White <input type="checkbox"/> NA <input type="checkbox"/> American Indian/Alaskan Native <input type="checkbox"/> Asian/Pacific Islander <input type="checkbox"/> Other
X	TERRI LINDENBERG	1136 W. FINCH DR. NAMPA, IDAHO 83651	terri@treasurevalleytransit.com	<input type="checkbox"/> Male <input checked="" type="checkbox"/> Female <input type="checkbox"/> Disabled	<input type="checkbox"/> Black <input type="checkbox"/> Hispanic <input type="checkbox"/> White <input type="checkbox"/> NA <input type="checkbox"/> American Indian/Alaskan Native <input type="checkbox"/> Asian/Pacific Islander <input type="checkbox"/> Other
X	Bruce Wiley	415 14th Ave N Nampa, ID 83687	bruce@minifarm.com	<input checked="" type="checkbox"/> Male <input type="checkbox"/> Female <input type="checkbox"/> Disabled	<input type="checkbox"/> Black <input type="checkbox"/> Hispanic <input checked="" type="checkbox"/> White <input type="checkbox"/> NA <input type="checkbox"/> American Indian/Alaskan Native <input type="checkbox"/> Asian/Pacific Islander <input type="checkbox"/> Other
X	Brian Billingsley	621 Cleveland Blvd. Caldwell, ID 83605	Bbillingsley@ci.caldwell.id.us	<input checked="" type="checkbox"/> Male <input type="checkbox"/> Female <input type="checkbox"/> Disabled	<input type="checkbox"/> Black <input type="checkbox"/> Hispanic <input checked="" type="checkbox"/> White <input type="checkbox"/> NA <input type="checkbox"/> American Indian/Alaskan Native <input type="checkbox"/> Asian/Pacific Islander <input type="checkbox"/> Other
X	Rusty Stretch	PO BOX 937 Ontario, OR 97914	rusty@mcwainfo.com	<input checked="" type="checkbox"/> Male <input type="checkbox"/> Female <input type="checkbox"/> Disabled	<input type="checkbox"/> Black <input type="checkbox"/> Hispanic <input checked="" type="checkbox"/> White <input type="checkbox"/> NA <input type="checkbox"/> American Indian/Alaskan Native <input type="checkbox"/> Asian/Pacific Islander <input type="checkbox"/> Other
	Edna Porterier	212 53rd St Parma, ID 83660	EdnaPorterier@upkwa.com	<input type="checkbox"/> Male <input checked="" type="checkbox"/> Female <input type="checkbox"/> Disabled	<input type="checkbox"/> Black <input type="checkbox"/> Hispanic <input type="checkbox"/> White <input type="checkbox"/> NA <input type="checkbox"/> American Indian/Alaskan Native <input type="checkbox"/> Asian/Pacific Islander <input type="checkbox"/> Other

Title VI of the Civil Rights Act of 1964, as amended, provides that no person shall on the ground of race, color, national origin, sex, age, and handicap/disability, be excluded from participation in, be denied benefits of, or be subject to discrimination under any program or activity receiving Federal financial assistance. If you believe you have been excluded or discriminated against in any of these areas, you may file a complaint no later than 180 days after the alleged act of discrimination with the Community Planning Association, Idaho Transportation Department, and/or the Federal Highway Administration US Department of Transportation.

3C Local Mobility Plan Meeting August 17, 2009, 1 pm – 3 pm
PLEASE SIGN-IN

College of Western Idaho, 5500 East University Way, Nampa, ID

COMPASS monitors attendance in order to assure equal opportunity. We appreciate your cooperation by voluntarily furnishing us with the information outlined in the sign-in sheet. This information will be kept confidential and used only for affirmative action purposes as specified by law (CFR 49.21.9).

Attended	Name (Please print or write clearly)	Address (City, State, Zip)	Email Address	Please check the appropriate boxes (Voluntary)	
	FRITZ Halfborg	7845 Elmwood Road Fruitland, ID	halfborg@fmic.com	<input checked="" type="checkbox"/> Male <input type="checkbox"/> Female <input type="checkbox"/> Disabled	<input type="checkbox"/> Black <input type="checkbox"/> Hispanic <input checked="" type="checkbox"/> White <input type="checkbox"/> NA <input type="checkbox"/> American Indian/Alaskan Native <input type="checkbox"/> Asian/Pacific Islander <input type="checkbox"/> Other
	BRIAN SHEA		brian.shea@cityofidaho.gov	<input checked="" type="checkbox"/> Male <input type="checkbox"/> Female <input type="checkbox"/> Disabled	<input type="checkbox"/> Black <input type="checkbox"/> Hispanic <input checked="" type="checkbox"/> White <input type="checkbox"/> NA <input type="checkbox"/> American Indian/Alaskan Native <input type="checkbox"/> Asian/Pacific Islander <input type="checkbox"/> Other
	Roger Howard	1878 W. Dowland Rd Boise ID 83705	rhoward@lineidaho.org	<input checked="" type="checkbox"/> Male <input type="checkbox"/> Female <input type="checkbox"/> Disabled	<input type="checkbox"/> Black <input type="checkbox"/> Hispanic <input checked="" type="checkbox"/> White <input type="checkbox"/> NA <input type="checkbox"/> American Indian/Alaskan Native <input type="checkbox"/> Asian/Pacific Islander <input type="checkbox"/> Other
	Brad Hawkins-Clark	109 S. McKinley Ave. Emmett, 83617	bhawkins-clark@cgca.id.us	<input checked="" type="checkbox"/> Male <input type="checkbox"/> Female <input type="checkbox"/> Disabled	<input type="checkbox"/> Black <input type="checkbox"/> Hispanic <input type="checkbox"/> White <input type="checkbox"/> NA <input type="checkbox"/> American Indian/Alaskan Native <input type="checkbox"/> Asian/Pacific Islander <input type="checkbox"/> Other
	MIKE WILSON STANLEY CONSULTANTS	2264 S. BONITO WAY STE. 150 MERIDIAN, ID 83642	wilsonmike@stanleygroup.com	<input checked="" type="checkbox"/> Male <input type="checkbox"/> Female <input type="checkbox"/> Disabled	<input type="checkbox"/> Black <input type="checkbox"/> Hispanic <input checked="" type="checkbox"/> White <input type="checkbox"/> NA <input type="checkbox"/> American Indian/Alaskan Native <input type="checkbox"/> Asian/Pacific Islander <input type="checkbox"/> Other
	Mary Huff	PO Box 128 Murphy Id 83650	mhuff@co.owayhee.id.us	<input type="checkbox"/> Male <input checked="" type="checkbox"/> Female <input type="checkbox"/> Disabled	<input type="checkbox"/> Black <input type="checkbox"/> Hispanic <input checked="" type="checkbox"/> White <input type="checkbox"/> NA <input type="checkbox"/> American Indian/Alaskan Native <input type="checkbox"/> Asian/Pacific Islander <input type="checkbox"/> Other
	CRAIG M. HILDE	16762 ARDYCE AVE CALDWELL, ID 83607	CRAIGHILDE@gmail.com	<input checked="" type="checkbox"/> Male <input type="checkbox"/> Female <input type="checkbox"/> Disabled	<input type="checkbox"/> Black <input type="checkbox"/> Hispanic <input checked="" type="checkbox"/> White <input type="checkbox"/> NA <input type="checkbox"/> American Indian/Alaskan Native <input type="checkbox"/> Asian/Pacific Islander <input type="checkbox"/> Other

Title VI of the Civil Rights Act of 1964, as amended, provides that no person shall on the ground of race, color, national origin, sex, age, and handicap/disability, be excluded from participation in, be denied benefits of, or be subject to discrimination under any program or activity receiving Federal financial assistance. If you believe you have been excluded or discriminated against in any of these areas, you may file a complaint no later than 180 days after the alleged act of discrimination with the Community Planning Association, Idaho Transportation Department, and/or the Federal Highway Administration US Department of Transportation.

3C Local Mobility Plan Meeting August 17, 2009, 1 pm – 3 pm
PLEASE SIGN-IN

College of Western Idaho, 5500 East University Way, Nampa, ID

COMPASS monitors attendance in order to assure equal opportunity. We appreciate your cooperation by voluntarily furnishing us with the information outlined in the sign-in sheet. This information will be kept confidential and used only for affirmative action purposes as specified by law (CFR 49.21.9).

Attended	Name (Please print or write clearly)	Address (City, State, Zip)	Email Address	Please check the appropriate boxes (Voluntary)	
	Glorie Chigbrow	830 N Main Suite 230 Meridian ID 83642	gchigbrow@valleyregiontransfer.org	<input type="checkbox"/> Male <input checked="" type="checkbox"/> Female <input type="checkbox"/> Disabled	<input type="checkbox"/> Black <input type="checkbox"/> Hispanic <input type="checkbox"/> White <input type="checkbox"/> NA <input type="checkbox"/> American Indian/Alaskan Native <input type="checkbox"/> Asian/Pacific Islander <input type="checkbox"/> Other
	Jan Cen	121 N. 9th St, Suite 501 Boise, ID 83702	jccen@cedboise.com	<input checked="" type="checkbox"/> Male <input type="checkbox"/> Female <input type="checkbox"/> Disabled	<input type="checkbox"/> Black <input type="checkbox"/> Hispanic <input checked="" type="checkbox"/> White <input type="checkbox"/> NA <input type="checkbox"/> American Indian/Alaskan Native <input type="checkbox"/> Asian/Pacific Islander <input type="checkbox"/> Other
	Patty Haller	1107 W. Jefferson St Boise, ID 83702	phaller@idahorefugees.org	<input type="checkbox"/> Male <input checked="" type="checkbox"/> Female <input type="checkbox"/> Disabled	<input type="checkbox"/> Black <input type="checkbox"/> Hispanic <input checked="" type="checkbox"/> White <input type="checkbox"/> NA <input type="checkbox"/> American Indian/Alaskan Native <input type="checkbox"/> Asian/Pacific Islander <input type="checkbox"/> Other
	Katey Lenih	2267 S. Bonito Way #150 Meridian ID 83642	lenihkatey@stanleygroup.com	<input type="checkbox"/> Male <input checked="" type="checkbox"/> Female <input type="checkbox"/> Disabled	<input type="checkbox"/> Black <input type="checkbox"/> Hispanic <input checked="" type="checkbox"/> White <input type="checkbox"/> NA <input type="checkbox"/> American Indian/Alaskan Native <input type="checkbox"/> Asian/Pacific Islander <input type="checkbox"/> Other
	Leslie Felton-Jue	5235 W Keybridge Dr Boise, ID 83703	leslie@psalm121.org	<input type="checkbox"/> Male <input checked="" type="checkbox"/> Female <input type="checkbox"/> Disabled	<input type="checkbox"/> Black <input type="checkbox"/> Hispanic <input checked="" type="checkbox"/> White <input type="checkbox"/> NA <input type="checkbox"/> American Indian/Alaskan Native <input type="checkbox"/> Asian/Pacific Islander <input type="checkbox"/> Other
	Karen Gallagher	Po Box 500 Boise ID 83701	kgallagher@cityofboise.org	<input type="checkbox"/> Male <input checked="" type="checkbox"/> Female <input type="checkbox"/> Disabled	<input type="checkbox"/> Black <input type="checkbox"/> Hispanic <input checked="" type="checkbox"/> White <input type="checkbox"/> NA <input type="checkbox"/> American Indian/Alaskan Native <input type="checkbox"/> Asian/Pacific Islander <input type="checkbox"/> Other
	Frances Branham	210 E Tucker Ave/P.O. 306 Parma, ID 83660	fran.psc@hotmail.com	<input type="checkbox"/> Male <input checked="" type="checkbox"/> Female <input type="checkbox"/> Disabled	<input type="checkbox"/> Black <input type="checkbox"/> Hispanic <input checked="" type="checkbox"/> White <input type="checkbox"/> NA <input type="checkbox"/> American Indian/Alaskan Native <input type="checkbox"/> Asian/Pacific Islander <input type="checkbox"/> Other

Title VI of the Civil Rights Act of 1964, as amended, provides that no person shall on the ground of race, color, national origin, sex, age, and handicap/disability, be excluded from participation in, be denied benefits of, or be subject to discrimination under any program or activity receiving Federal financial assistance. If you believe you have been excluded or discriminated against in any of these areas, you may file a complaint no later than 180 days after the alleged act of discrimination with the Community Planning Association, Idaho Transportation Department, and/or the Federal Highway Administration US Department of Transportation.

3C Local Mobility Plan Meeting August 17, 2009, 1pm-3pm
PLEASE SIGN-IN

College of Western Idaho, 5500 East University Way, Nampa, ID

COMPASS monitors attendance in order to assure equal opportunity. We appreciate your cooperation by voluntarily furnishing us with the information outlined in the sign-in sheet. This information will be kept confidential and used only for affirmative action purposes as specified by law (CFR 49.21.9).

Attended	Name (Please print or write clearly)	Address (City, State, Zip)	Email Address	Please check the appropriate boxes (Voluntary)	
	KRISTA COLE		Krista@Eoalidaho.org	<input type="checkbox"/> Male <input checked="" type="checkbox"/> Female <input type="checkbox"/> Disabled	<input type="checkbox"/> Black <input type="checkbox"/> Hispanic <input checked="" type="checkbox"/> White <input type="checkbox"/> NA <input type="checkbox"/> American Indian/Alaskan Native <input type="checkbox"/> Asian/Pacific Islander <input type="checkbox"/> Other
	Mitch Young	ARP, IDAHO	mitchyoung@spro.net	<input checked="" type="checkbox"/> Male <input type="checkbox"/> Female <input type="checkbox"/> Disabled	<input type="checkbox"/> Black <input type="checkbox"/> Hispanic <input checked="" type="checkbox"/> White <input type="checkbox"/> NA <input type="checkbox"/> American Indian/Alaskan Native <input type="checkbox"/> Asian/Pacific Islander <input type="checkbox"/> Other
	Yuri Mezzacane	101 S Canyon Blvd Suite 301 Boise, ID 83706	yuri@kittelson.com	<input checked="" type="checkbox"/> Male <input type="checkbox"/> Female <input type="checkbox"/> Disabled	<input type="checkbox"/> Black <input type="checkbox"/> Hispanic <input checked="" type="checkbox"/> White <input type="checkbox"/> NA <input type="checkbox"/> American Indian/Alaskan Native <input type="checkbox"/> Asian/Pacific Islander <input type="checkbox"/> Other
				<input type="checkbox"/> Male <input type="checkbox"/> Female <input type="checkbox"/> Disabled	<input type="checkbox"/> Black <input type="checkbox"/> Hispanic <input type="checkbox"/> White <input type="checkbox"/> NA <input type="checkbox"/> American Indian/Alaskan Native <input type="checkbox"/> Asian/Pacific Islander <input type="checkbox"/> Other
				<input type="checkbox"/> Male <input type="checkbox"/> Female <input type="checkbox"/> Disabled	<input type="checkbox"/> Black <input type="checkbox"/> Hispanic <input type="checkbox"/> White <input type="checkbox"/> NA <input type="checkbox"/> American Indian/Alaskan Native <input type="checkbox"/> Asian/Pacific Islander <input type="checkbox"/> Other
				<input type="checkbox"/> Male <input type="checkbox"/> Female <input type="checkbox"/> Disabled	<input type="checkbox"/> Black <input type="checkbox"/> Hispanic <input type="checkbox"/> White <input type="checkbox"/> NA <input type="checkbox"/> American Indian/Alaskan Native <input type="checkbox"/> Asian/Pacific Islander <input type="checkbox"/> Other
				<input type="checkbox"/> Male <input type="checkbox"/> Female <input type="checkbox"/> Disabled	<input type="checkbox"/> Black <input type="checkbox"/> Hispanic <input type="checkbox"/> White <input type="checkbox"/> NA <input type="checkbox"/> American Indian/Alaskan Native <input type="checkbox"/> Asian/Pacific Islander <input type="checkbox"/> Other

Title VI of the Civil Rights Act of 1964, as amended, provides that no person shall on the ground of race, color, national origin, sex, age, and handicap/disability, be excluded from participation in, be denied benefits of, or be subject to discrimination under any program or activity receiving Federal financial assistance. If you believe you have been excluded or discriminated against in any of these areas, you may file a complaint no later than 180 days after the alleged act of discrimination with the Community Planning Association, Idaho Transportation Department, and/or the Federal Highway Administration US Department of Transportation.

Appendix I: Proclamation of Endorsement

September 28, 2009

Idaho Transportation Department
Division of Public Transportation

To Whom It May Concern:

The Sponsor Group representing the 3C Local Mobility Management Network (LMMN), which includes Ada, Boise, Canyon, Elmore, Gem and Owyhee counties, approves and adopts the attached 3C Local Mobility Plan. This indicates the endorsement for the completed and adopted plan.

On behalf of the Sponsor Group,


Terri Lindenberg
Chair of the 3C LMMN Sponsor Group