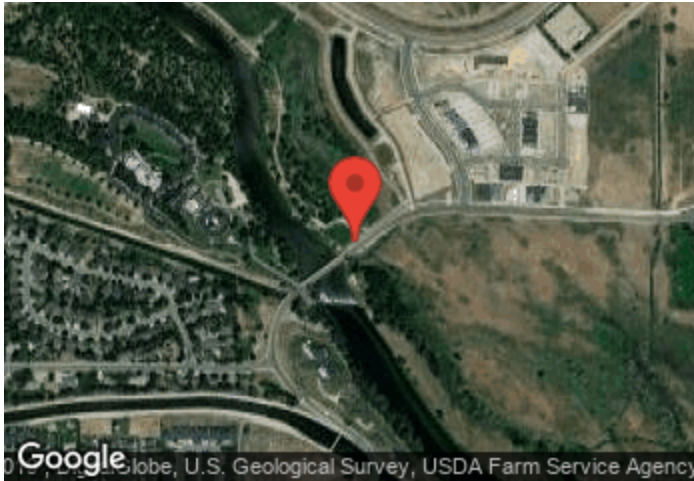


Boise - Eckert Bridge

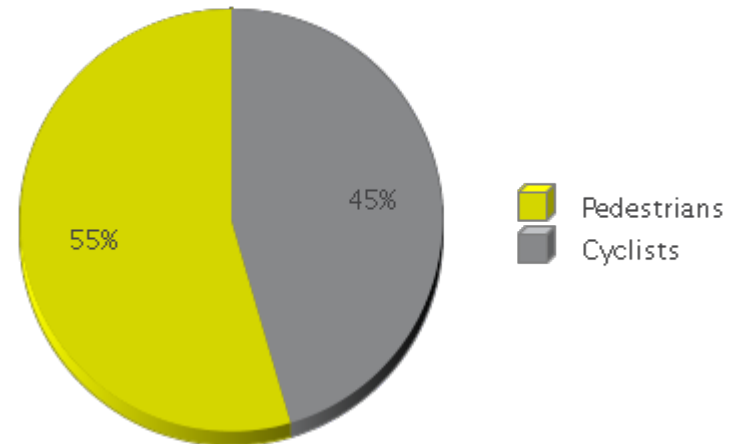
Period Analyzed: Monday, January 01, 2018 to Monday, December 31, 2018



	Total Traffic for the Analyzed Period	Daily Average	Busiest Day of the Week	Busiest Month of the Year	Distribution	
					IN	OUT
Pedestrians	86,751	241	Sunday	July 18: 15,067	50	50
Cyclists	72,328	201	Sunday	July 18: 11,603	49	51

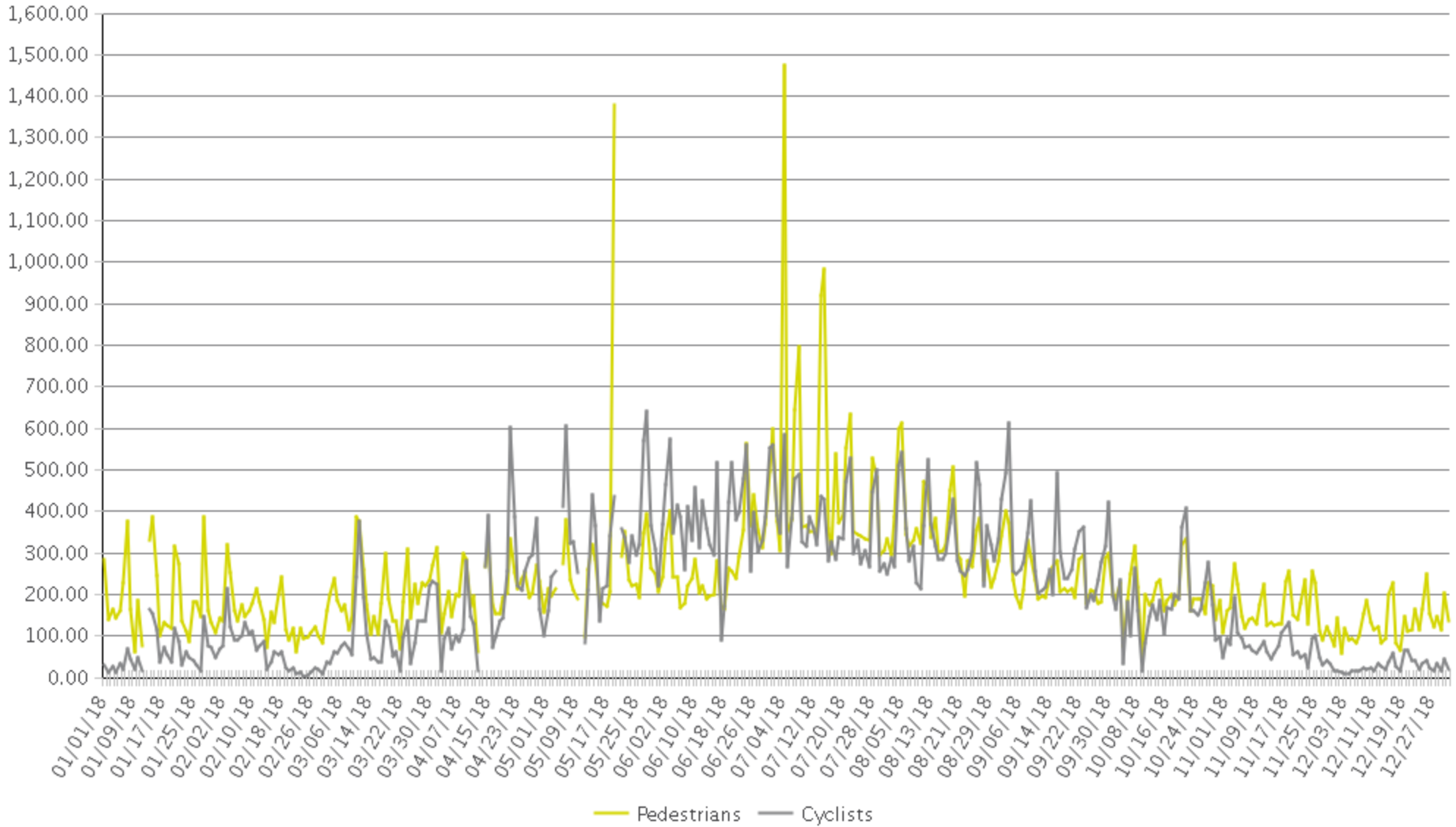
IN: In = West

OUT: Out = East



Boise - Eckert Bridge

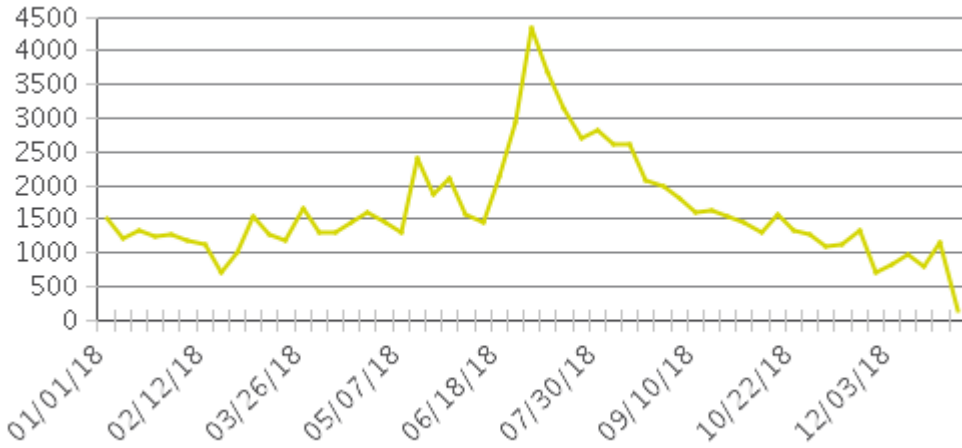
Period Analyzed: Monday, January 01, 2018 to Monday, December 31, 2018



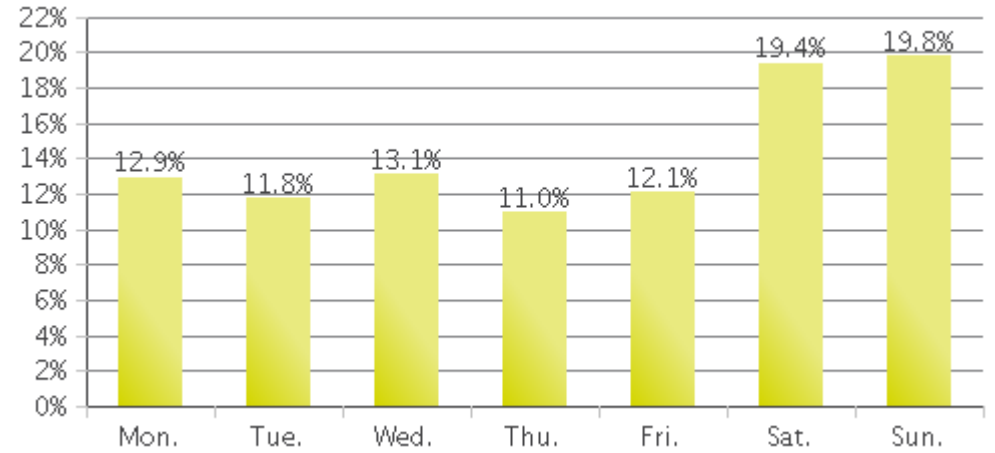
Boise - Eckert Bridge (Pedestrians)

Period Analyzed: Monday, January 01, 2018 to Monday, December 31, 2018

Weekly Traffic



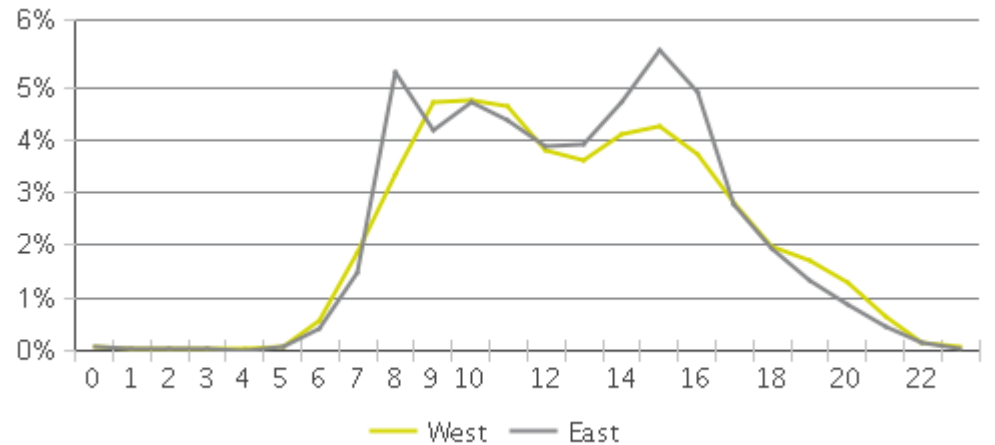
Weekly Profile



Hourly Profile during Weekdays



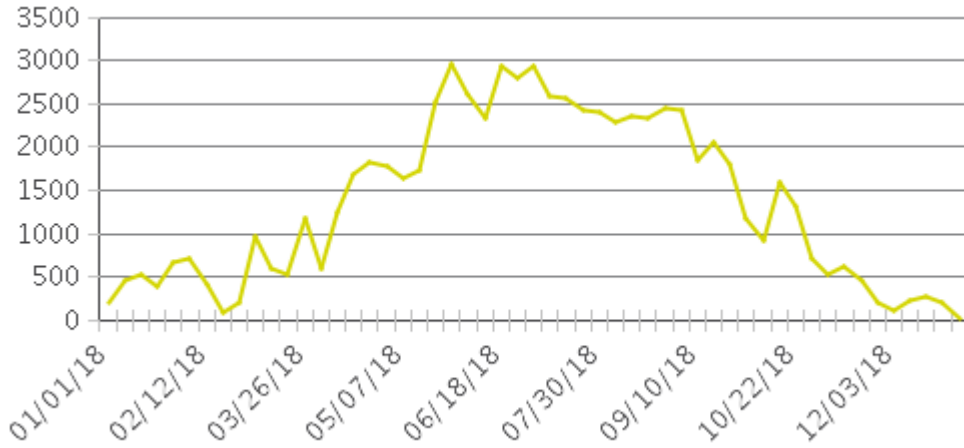
Hourly Profile during the Weekend



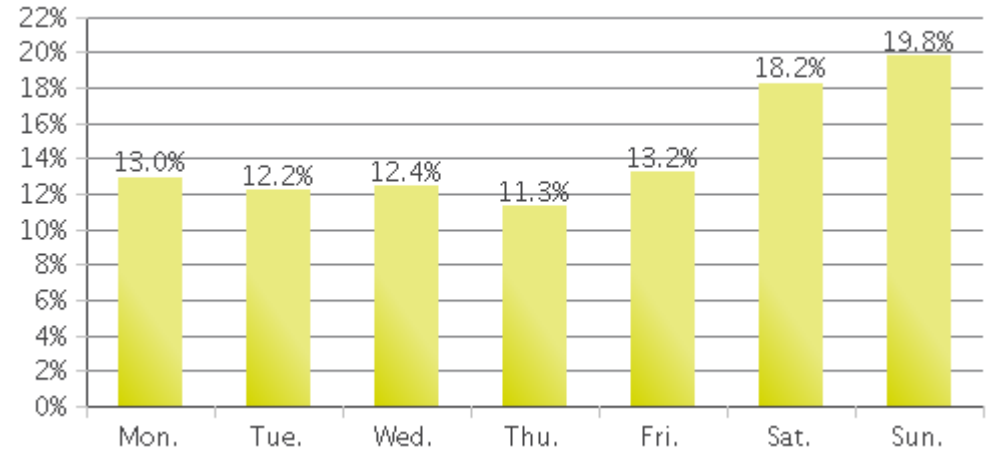
Boise - Eckert Bridge (Cyclists)

Period Analyzed: Monday, January 01, 2018 to Monday, December 31, 2018

Weekly Traffic



Weekly Profile



Hourly Profile during Weekdays



Hourly Profile during the Weekend

