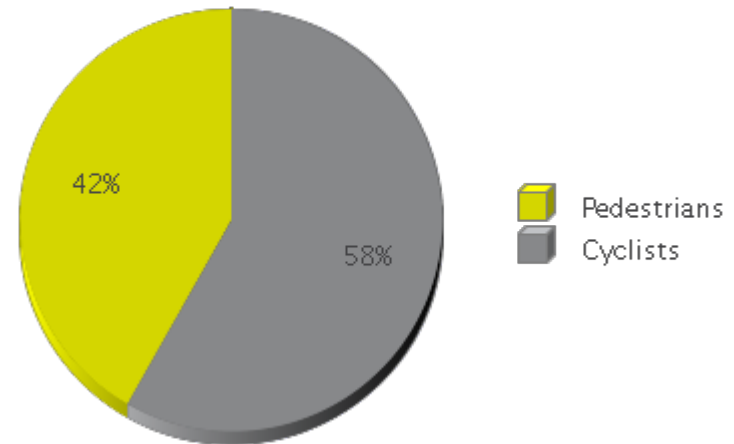


Boise - Anne Frank

Period Analyzed: Monday, January 01, 2018 to Monday, December 31, 2018

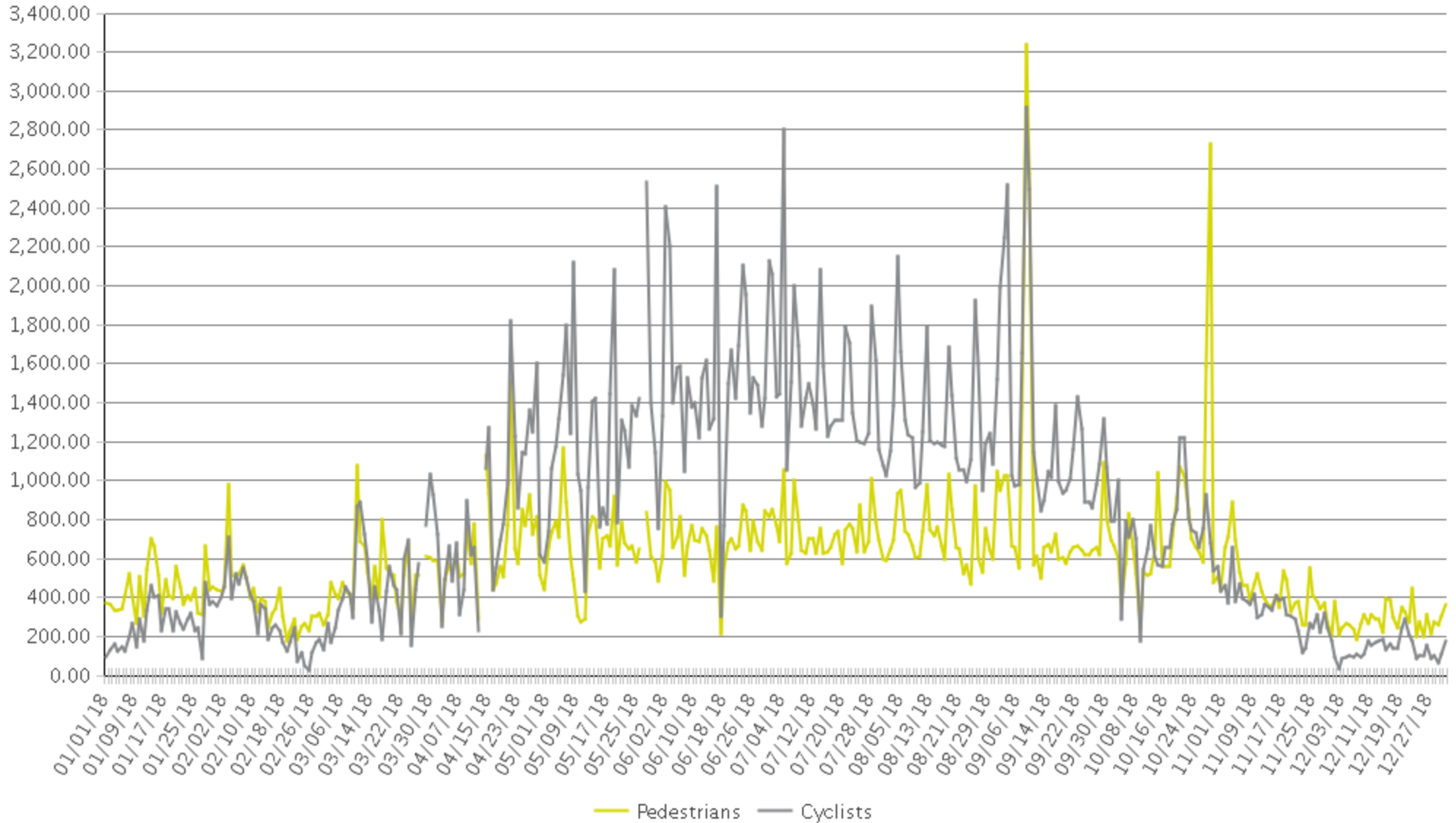


	Total Traffic for the Analyzed Period	Daily Average	Busiest Day of the Week	Busiest Month of the Year	Distribution	
					IN	OUT
Pedestrians	215,402	595	Saturday	September 18: 25,888	61	39
Cyclists	299,710	828	Saturday	July 18: 46,419	56	44



Boise - Anne Frank

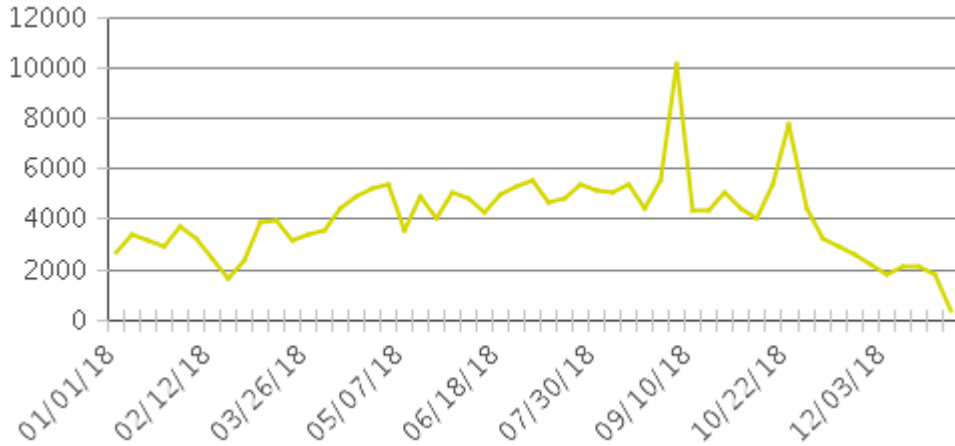
Period Analyzed: Monday, January 01, 2018 to Monday, December 31, 2018



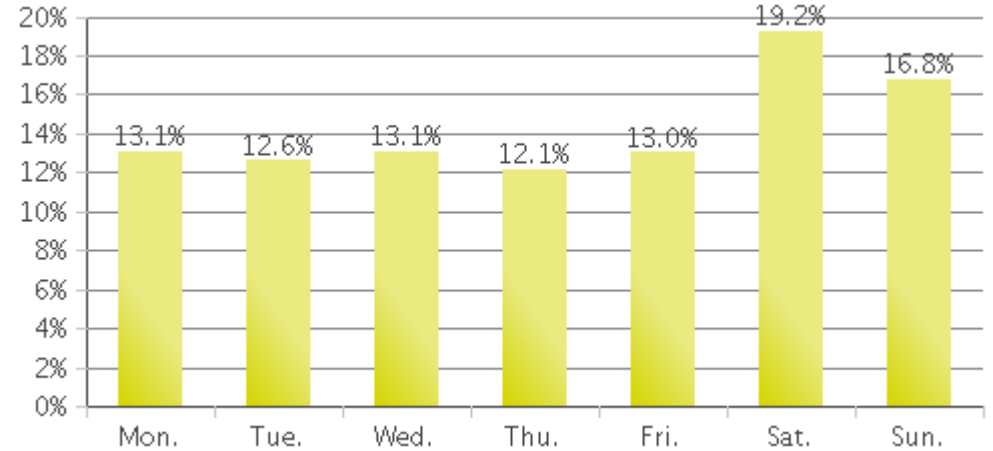
Boise - Anne Frank (Pedestrians)

Period Analyzed: Monday, January 01, 2018 to Monday, December 31, 2018

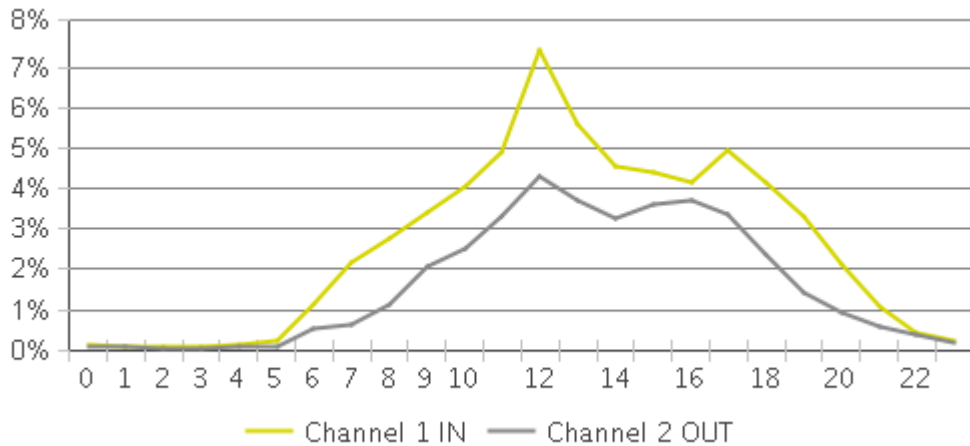
Weekly Traffic



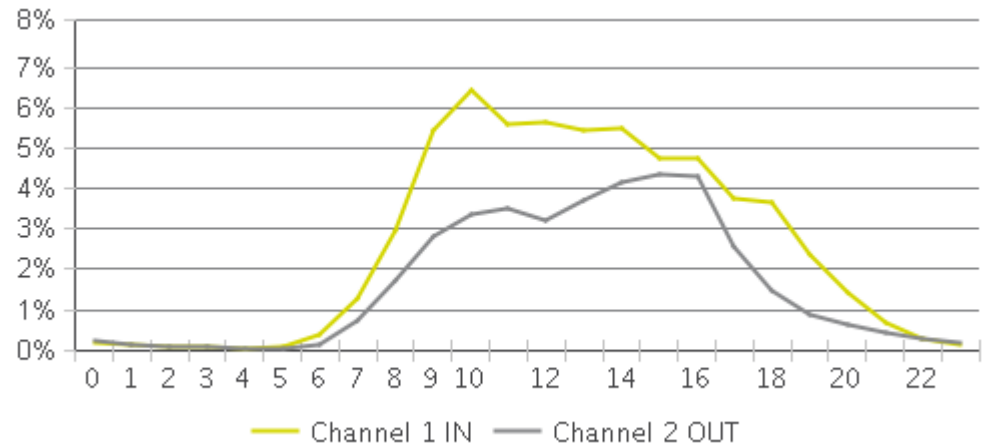
Weekly Profile



Hourly Profile during Weekdays



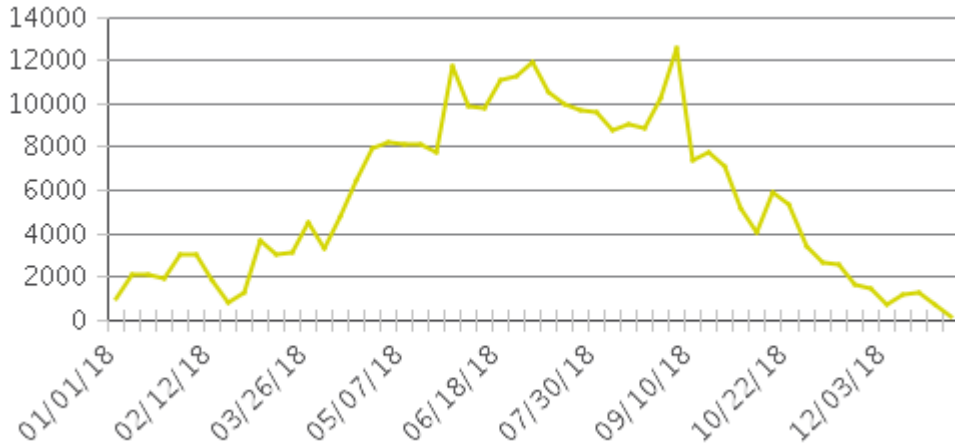
Hourly Profile during the Weekend



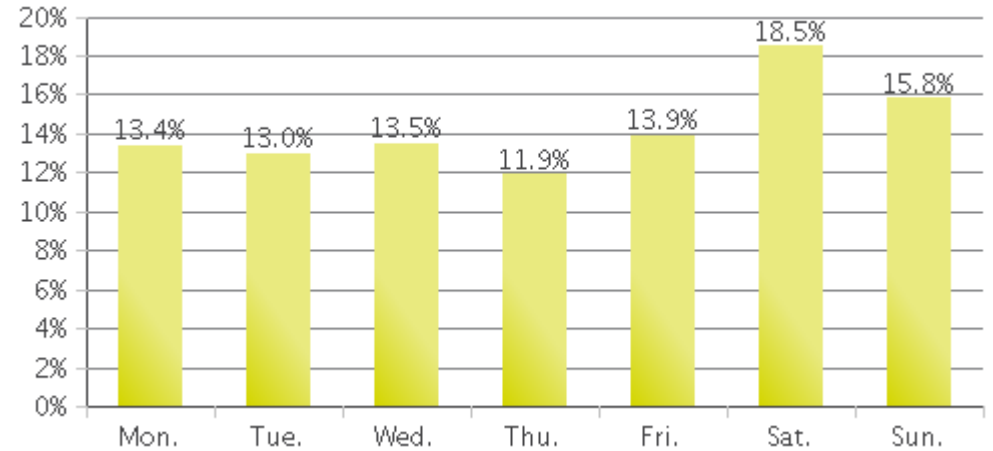
Boise - Anne Frank (Cyclists)

Period Analyzed: Monday, January 01, 2018 to Monday, December 31, 2018

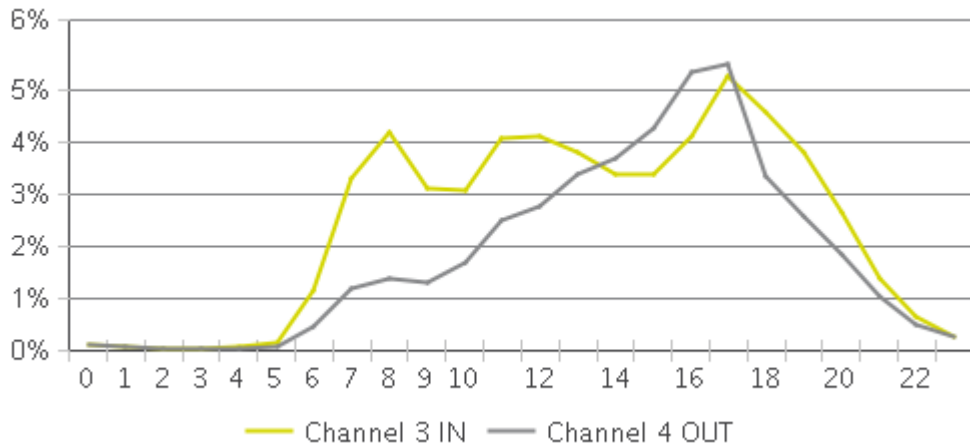
Weekly Traffic



Weekly Profile



Hourly Profile during Weekdays



Hourly Profile during the Weekend

