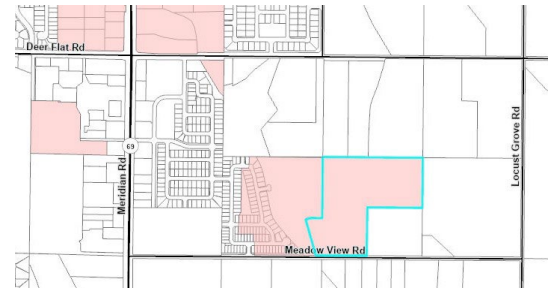


Communities in Motion (CIM) Development Review Checklist

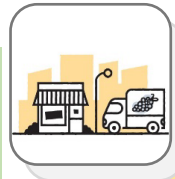
Development Name: Blossom Meadows
CIM Vision Category: Future Neighborhood
Consistent with CIM Vision? YES
New Households: 177 **New Jobs:** 0



Safety
 How safe and comfortable is the nearest major road (minor arterial or above) for bicyclists and pedestrians? Analysis is limited to existing roadway conditions.

N/A

Pedestrian level of stress N/A
 Bicycle level of stress N/A



Economic Vitality
 To what extent does the project enable people, government, and businesses to prosper?

Economic Activity Center Access
 Impact on Existing Surrounding Farmland
 Net Fiscal Impact



Convenience
 What services are available within 0.5 miles (green) or 1 mile (yellow) of the project?

Nearest bus stop
 Nearest public school
 Nearest public park



Quality of Life
 Checked boxes indicate that additional information is attached.

Active Transportation
 Automobile Transportation
 Public Transportation
 Roadway Projects



Improves performance



Does not improve or reduce performance



Reduces performance

Comments:

Based on the site plan provided, COMPASS has no additional details.

Who we are: The Community Planning Association of Southwest Idaho (COMPASS) is the metropolitan planning organization for Ada and Canyon Counties. This review evaluates whether land developments are consistent with *Communities in Motion*, the regional long-range transportation plan for Ada and Canyon Counties. This checklist is not intended to be prescriptive, but rather a guidance document. Past checklists are available [online](#). See the [Development Review User Guide](#) for more information on the red, yellow, and green checklist thresholds.



Complete Network Appendix

Checkmarks (✓) below indicate suggested changes to a site plan, based on the [COMPASS Complete Network Policy \(No. 2022-01\)](#). Both the Complete Network Policy and site-specific suggestions are intended to better align land use with identified transportation uses in the corridor. Please see the Complete Network [map](#) for primary and secondary uses for roadways (minor arterial and above) in Ada and Canyon Counties.

Corridor Name:

N/A

Primary Use:

Secondary Use:

Land Uses to Support Bicycle and Pedestrian Transportation

- ✓ Provide sidewalks and pathways between horizontal mixed use areas to promote walking and biking between areas.

Bicycle and Pedestrian Infrastructure

- ✓ Provide sufficient and covered bike parking near destinations

Fiscal Impact Analysis

Below are the expected revenues and costs to local governments from this project. The purpose of this analysis is to help the public, stakeholders, and the decision-makers better manage growth.

Capital and operating expenditures are determined based on service and infrastructure needs, including persons per household, student generation rates, lot sizes, street frontages, vehicle trip and trip adjustment factors, average trip lengths, construction values, income, discretionary spending, and employment densities.

Net Fiscal Impact by Agency



City



County



Highway District



School District

Breakeven point across all agencies: 1 Year

Disclaimer: *This tool only looks out 20 years and does not include replacement costs for infrastructure, public utilities, or unfunded transportation needs in the project area. More information about the COMPASS Fiscal Impact Tool is available at: <https://compassidaho.org/fiscal-impact-tool/>*

Long-Term Funded and Unfunded Capital Projects

**CIM Priority
Corridor:**

State Highway 69 (Kuna Road to Interstate 84)

Widening State Highway 69 (Kuna Road to Interstate 84) to 6 travel lanes is an unfunded project in *Communities in Motion 2050*. It is the state system's number 4 priority.

**CIM Priority
Corridor:**

Meridian Road Extension (King Road to Kuna Road)

Constructing a new roadway Meridian Road Extension (King Road to Kuna Road) and railroad overpass is a long-term funded project in *Communities in Motion2 2050*.

More information on transportation needs and projects based on forecasted future growth is available at: <https://cim2050.compassidaho.org/projects-and-priorities/project-priorities/>