

# Development Review Protocol

Carl Miller, AICP CTP  
Principal Planner

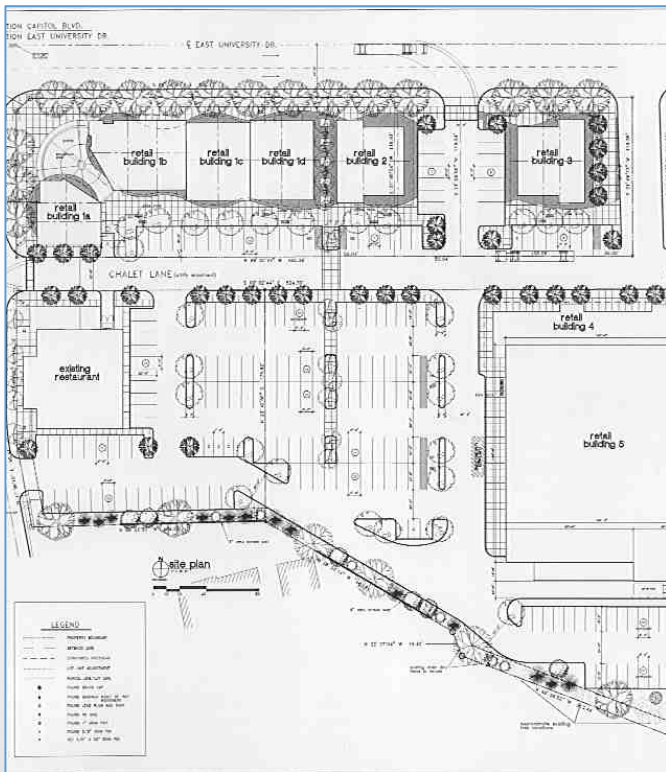


# Introduction

- Requesting **Board Approval** of the revised Development Review Protocol and Checklist
- Development Review Protocol
  - Impact on transportation system
  - Changes review threshold
  - Letter → Checklist
  - Annual review by DAC



# Purpose: Implementing CIM



Bridges **local** and **regional** planning



**COMPASS**

COMMUNITY PLANNING ASSOCIATION

of Southwest Idaho

# New and Improved

1. Development Checklist



2. Link proposed development to CIM 2040 Vision



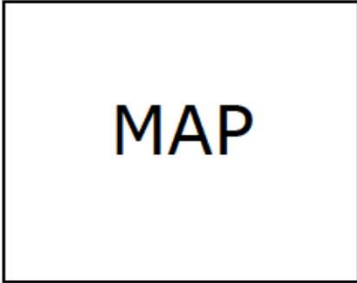
3. Communication



# CIM 2040 Checklist

## Communities in Motion 2040 Development Checklist

The Community Planning Association of Southwest Idaho (COMPASS) is the metropolitan planning organization (MPO) for Ada and Canyon Counties. COMPASS has developed this checklist as a tool for local governments to evaluate whether land developments are consistent with the goals of *Communities in Motion 2040* (CIM 2040), the regional long-range transportation plan for Ada and Canyon Counties. CIM 2040 was developed through a collaborative approach with COMPASS member agencies and adopted by the COMPASS Board on July 21, 2014.



This checklist is not intended to be prescriptive, but rather a guidance document based on CIM 2040 goals, objectives, and performance measures. A checklist user guide is available [here](#); and more information about the CIM 2040 goals can be found [here](#); and information on the CIM 2040 Vision can be found [here](#).

Name of Development: \_\_\_\_\_

Summary: \_\_\_\_\_  
 \_\_\_\_\_  
 \_\_\_\_\_

### Land Use

In which of the [CIM 2040 Vision Areas](#) is the proposed development? (Goal [2.1](#))?

- Downtown     Employment Center     Existing Neighborhood     Foothills  
 Future Neighborhood     Mixed Use     Prime Farmland     Rural  
 Small Town     Transit Oriented Development

Yes  No  N/A The proposal is within a CIM 2040 Major Activity Center. (Goal [2.3](#))

### Neighborhood (Transportation Analysis Zone) Demographics

Existing		Existing + Proposed		2040 Forecast	
Households	Jobs	Households	Jobs	Households	Jobs

Yes  No  N/A The number of jobs and/or households in this development is consistent with jobs/households in the CIM 2040 Vision in this neighborhood. (Goal [2.1](#))

### Area (Adjacent Transportation Analysis Zone) Demographics

Existing		Existing + Proposed		2040 Forecast	
Households	Jobs	Households	Jobs	Households	Jobs

Yes  No  N/A The number of jobs and/or households in this development is consistent with jobs/households in the CIM 2040 Vision in this area. (Goal [2.1](#))



More information on COMPASS and *Communities in Motion 2040* can be found at:  
[www.compassidaho.org](http://www.compassidaho.org)  
 Email: [info@compassidaho.org](mailto:info@compassidaho.org)  
 Telephone: (208) 475-2239



- Maintains authority with local agencies
- Increases numbers of reviews
- Represents each CIM 2040 element
- Quick Response Codes and hyperlinks



**COMPASS**  
 COMMUNITY PLANNING ASSOCIATION  
 of Southwest Idaho

# CIM 2040 Checklist

- Links proposals to CIM 2040 Vision
- Implements Blueprint for Good Growth

## Neighborhood (Transportation Analysis Zone) Demographics

Existing		Existing + Proposed		2040 Forecast	
Households	Jobs	Households	Jobs	Households	Jobs

- Yes**  **No**  **N/A** The number of jobs and/or households in this development is consistent with jobs/households in the CIM 2040 Vision in this neighborhood. (**Goal 2.1**)

## Area (Adjacent Transportation Analysis Zone) Demographics

Existing		Existing + Proposed		2040 Forecast	
Households	Jobs	Households	Jobs	Households	Jobs

- Yes**  **No**  **N/A** The number of jobs and/or households in this development is consistent with jobs/households in the CIM 2040 Vision in this area. (**Goal 2.1**)



**COMPASS**

COMMUNITY PLANNING ASSOCIATION

of Southwest Idaho

# CIM 2040 Checklist

- Links proposals to CIM 2040 Vision
- Implements Blueprint for Good Growth

## Neighborhood (Transportation Analysis Zone) Demographics

Existing		Existing + Proposed		2040 Forecast	
Households	Jobs	Households	Jobs	Households	Jobs
100	50	500	50	250	50

- ~~Yes~~  ~~No~~  N/A The number of jobs and/or households in this development is consistent with jobs/households in the CIM 2040 Vision in this neighborhood. (**Goal 2.1**)

## Area (Adjacent Transportation Analysis Zone) Demographics

Existing		Existing + Proposed		2040 Forecast	
Households	Jobs	Households	Jobs	Households	Jobs
1,000	200	1,400	200	2,000	400

- ~~Yes~~  No  N/A The number of jobs and/or households in this development is consistent with jobs/households in the CIM 2040 Vision in this area. (**Goal 2.1**)



**COMPASS**

COMMUNITY PLANNING ASSOCIATION  
of Southwest Idaho

# CIM 2040 Checklist

- Fact-based, not subjective
- Yes is good. No is bad.
- Based on the CIM 2040 performance measures

## Community Infrastructure

- Yes  No  N/A The proposal is infill development. (Goals [4.1](#), [4.2](#))
- Yes  No  N/A The proposal is within or adjacent to city limits. (Goals [4.1](#), [4.2](#))
- Yes  No  N/A The proposal is within a city area of impact. (Goals [4.1](#), [4.2](#))

## Health

- Yes  No  N/A The proposal is within 1/4 mile of a transit stop. (Goal [5.1](#))
- Yes  No  N/A The proposal is within 1/4 mile of a public school. (Goal [5.1](#))
- Yes  No  N/A The proposal is within 1/4 mile of a grocery store. (Goal [5.1](#))
- Yes  No  N/A The proposal is within 1 mile of a park and ride location. (Goal [5.1](#))



**COMPASS**

COMMUNITY PLANNING ASSOCIATION

of Southwest Idaho



# COMPASS Dashboard



**COMPASS**  
COMMUNITY PLANNING ASSOCIATION  
of Southwest Idaho

# Committees and Focus Groups

Public  
Participation  
Committee



Demographic  
Advisory  
Committee

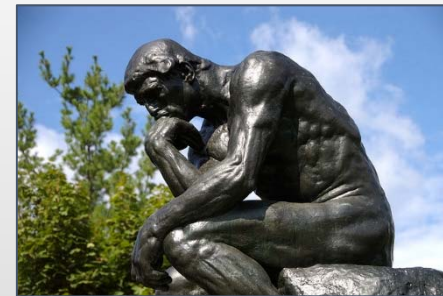
May

July

April  
July  
October



P&Z  
Commissioner  
Focus Group



**COMPASS**

COMMUNITY PLANNING ASSOCIATION

of Southwest Idaho

# Summary

Purpose: Implement CIM 2040 and Blueprint for Good Growth by coordinating infrastructure with planning decisions

## How

- Revised Development Review Protocol
- Development Checklist
- COMPASS Dashboard



# Questions?

## Communities in Motion 2040 Development Checklist

The Community Planning Association of Southwest Idaho (COMPASS) is the metropolitan planning organization (MPO) for Ada and Canyon Counties. COMPASS has developed this checklist as a tool for local governments to evaluate whether land developments are consistent with the goals of *Communities in Motion 2040* (CIM 2040), the regional long-range transportation plan for Ada and Canyon Counties. CIM 2040 was developed through a collaborative approach with COMPASS member agencies and adopted by the COMPASS Board on July 21, 2014.

MAP

This checklist is not intended to be prescriptive, but rather a guidance document based on CIM 2040 goals, objectives, and performance measures. A checklist user guide is available [here](#); and more information about the CIM 2040 goals can be found [here](#); and information on the CIM 2040 Vision can be found [here](#).

Name of Development: \_\_\_\_\_

Summary: \_\_\_\_\_  
 \_\_\_\_\_  
 \_\_\_\_\_

### Land Use

In which of the [CIM 2040 Vision Areas](#) is the proposed development? (Goal 2.1)?

Downtown     Employment Center     Existing Neighborhood     Foothills  
 Future Neighborhood     Mixed Use     Prime Farmland     Rural  
 Small Town     Transit Oriented Development

Yes  No  N/A The proposal is within a CIM 2040 Major Activity Center. (Goal 2.3)

### Neighborhood (Transportation Analysis Zone) Demographics

Existing		Existing + Proposed		2040 Forecast	
Households	Jobs	Households	Jobs	Households	Jobs

Yes  No  N/A The number of jobs and/or households in this development is consistent with jobs/households in the CIM 2040 Vision in this neighborhood. (Goal 2.1)

### Area (Adjacent Transportation Analysis Zone) Demographics

Existing		Existing + Proposed		2040 Forecast	
Households	Jobs	Households	Jobs	Households	Jobs

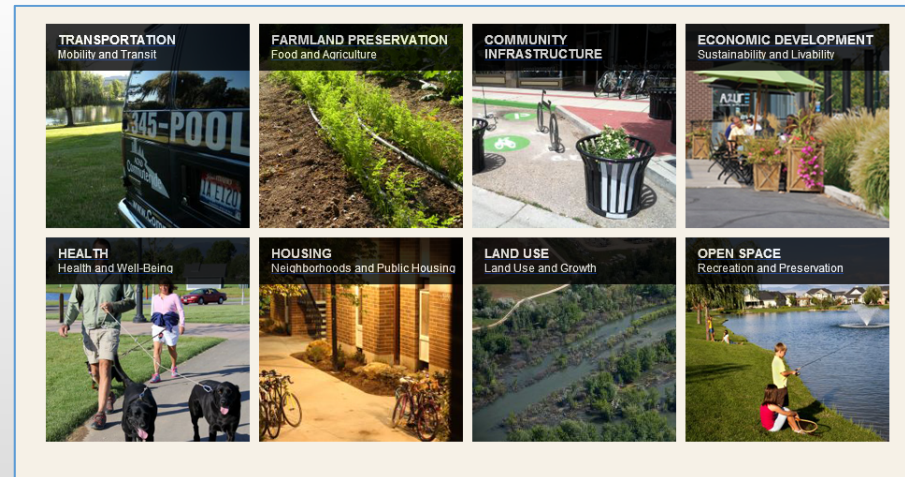
Yes  No  N/A The number of jobs and/or households in this development is consistent with jobs/households in the CIM 2040 Vision in this area. (Goal 2.1)



More information on COMPASS and *Communities in Motion 2040* can be found at:  
[www.compassidaho.org](http://www.compassidaho.org)  
 Email: [info@compassidaho.org](mailto:info@compassidaho.org)  
 Telephone: (208) 475-2239



(Page 1 of 2)



**COMPASS**  
 COMMUNITY PLANNING ASSOCIATION  
 of Southwest Idaho

# Conclusion

Request: Approve the revised Development Review Protocol and Checklist

**Communities in Motion 2040 Development Checklist**

The Community Planning Association of Southwest Idaho (COMPASS) is the metropolitan planning organization (MPO) for Ada and Canyon Counties. COMPASS has developed this checklist as a tool for local governments to evaluate whether land developments are consistent with the goals of *Communities in Motion 2040* (CIM 2040), the regional long-range transportation plan for Ada and Canyon Counties. CIM 2040 was developed through a collaborative approach with COMPASS member agencies and adopted by the COMPASS Board on July 21, 2014.

This checklist is not intended to be prescriptive, but rather a guidance document based on CIM 2040 goals, objectives, and performance measures. A checklist user guide is available [here](#) and more information about the CIM 2040 goals can be found [here](#); and information on the CIM 2040 Vision can be found [here](#).

MAP

**Name of Development:** \_\_\_\_\_

**Summary:** \_\_\_\_\_  
\_\_\_\_\_  
\_\_\_\_\_

**Land Use**  
In which of the [CIM 2040 Vision Areas](#) is the proposed development? (Goal [2.1](#))?

Downtown     Employment Center     Existing Neighborhood     Foothills  
 Future Neighborhood     Mixed Use     Prime Farmland     Rural  
 Small Town     Transit Oriented Development

Yes    No    N/A The proposal is within a CIM 2040 Major Activity Center. (Goal [2.3](#))

**Neighborhood (Transportation Analysis Zone) Demographics**


Existing		Existing + Proposed		2040 Forecast	
Households	Jobs	Households	Jobs	Households	Jobs

Yes    No    N/A The number of jobs and/or households in this development is consistent with jobs/households in the CIM 2040 Vision in this neighborhood. (Goal [2.1](#))


**Area (Adjacent Transportation Analysis Zone) Demographics**

Existing		Existing + Proposed		2040 Forecast	
Households	Jobs	Households	Jobs	Households	Jobs

Yes    No    N/A The number of jobs and/or households in this development is consistent with jobs/households in the CIM 2040 Vision in this area. (Goal [2.1](#))



More information on COMPASS and *Communities in Motion 2040* can be found at:  
[www.compassidaho.org](http://www.compassidaho.org)  
Email: [info@compassidaho.org](mailto:info@compassidaho.org)  
Telephone: (208) 475-2239



**COMPASS**  
COMMUNITY PLANNING ASSOCIATION  
of Southwest Idaho

(Page 1 of 2)

Carl Miller, AICP CTP

208-475-2239

[cmiller@compassidaho.org](mailto:cmiller@compassidaho.org)



**COMPASS**

COMMUNITY PLANNING ASSOCIATION

of Southwest Idaho