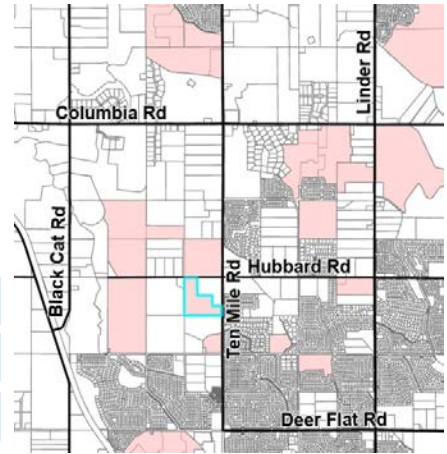


Communities in Motion 2050 Development Checklist

The Community Planning Association of Southwest Idaho (COMPASS) is the metropolitan planning organization (MPO) for Ada and Canyon Counties. COMPASS has developed this review as a tool for local governments to evaluate whether land developments are consistent with the goals of Communities in Motion 2050 (CIM 2050), the regional long-range transportation plan for Ada and Canyon Counties. This checklist is not intended to be prescriptive, but rather a guidance document based on CIM 2050 goals.



Development Name: Bodahl Farm Rezone
CIM Vision Category: Existing Neighborhood **New Jobs:** 0
CIM Corridor: Ten Mile Road **New Households:** ±330



Safety
 Level of Stress measures how safe and comfortable a bicyclist or pedestrian would feel on a corridor and considers multimodal infrastructure number of vehicle lanes and travel speeds.

- Pedestrian level of stress
- Bicycle level of stress



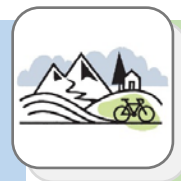
Economic Vitality
 These tools evaluate whether the location of the proposal supports economic vitality by growing near existing public services.

- Activity Center Access
- Farmland Preservation
- Net Fiscal Impact
- Within CIM Forecast



Convenience
 Residents who live or work less than 1/2 mile from critical services have more transportation choices, especially for vulnerable populations.

- Nearest bus stop
- Nearest public school
- Nearest public park



Quality of Life
 Checked boxes indicate that additional information is attached.

- Active Transportation
- Automobile Transportation
- Public Transportation
- Roadway Capacity



Improves performance



Does not improve or reduce performance



Reduces performance

Comments:
 The Ada County Highway District's 2020 [Capital Improvement Plan](#) shows that Ten Mile Road from Deer Flat Road to Hubbard Road is a transitional-commercial arterial, planned to be reconstructed/widened to 3 lanes in 2031-2035 (CIP #1260).

Communities in Motion 2050
[2020 Change in Motion Report](#)
[Development Review Process](#)

Web: www.compassidaho.org
 Email: info@compassidaho.org



Fiscal Impact Analysis Supplemental for the Development Review Checklist

The purpose of the fiscal impact analysis is to better estimate expected revenues and costs to local governments as a result of new development so that the public, stakeholders, and the decision-makers can better manage growth. Capital and operating expenditures are determined by various factors that determine service and infrastructure needs, including persons per household, student generation rates, lot sizes, street frontages, vehicle trip and trip adjustment factors, average trip lengths, construction values, income, discretionary spending, and employment densities.

The COMPASS Development Checklist considers the level of fiscal benefits, how many public agencies benefit or are burdened by additional growth, and how long the proposal will take to achieve a fiscal break-even point, if at all.

More information about the COMPASS Fiscal Impact Tool is available at:

www.compassidaho.org/prodserv/fiscalimpact.htm

Overall Net Fiscal Impact Net Fiscal Impact by Agency



City



County



Highway District



School District

Break Even: 1 year