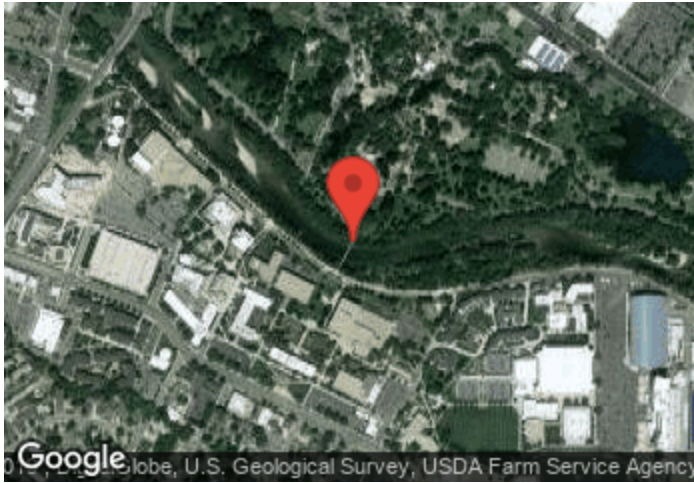


# Boise - Friendship Bridge

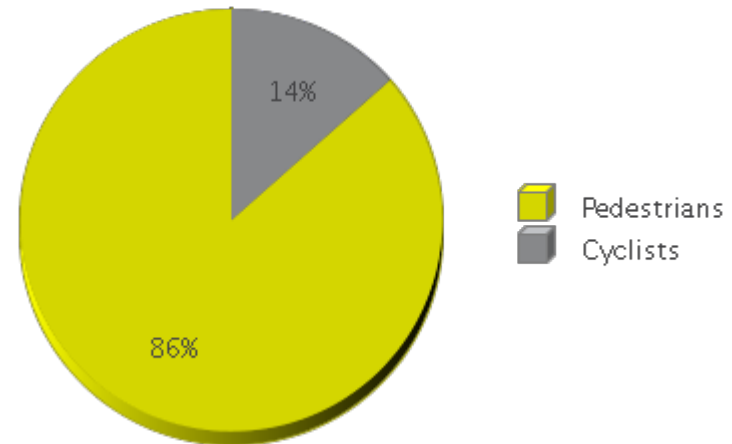
Period Analyzed: Monday, January 01, 2018 to Monday, December 31, 2018



	Total Traffic for the Analyzed Period	Daily Average	Busiest Day of the Week	Busiest Month of the Year	Distribution	
					IN	OUT
Pedestrians	660,282	1,824	Tuesday	September 18: 95,276	86	14
Cyclists	103,065	285	Tuesday	May 18: 27,629	80	20

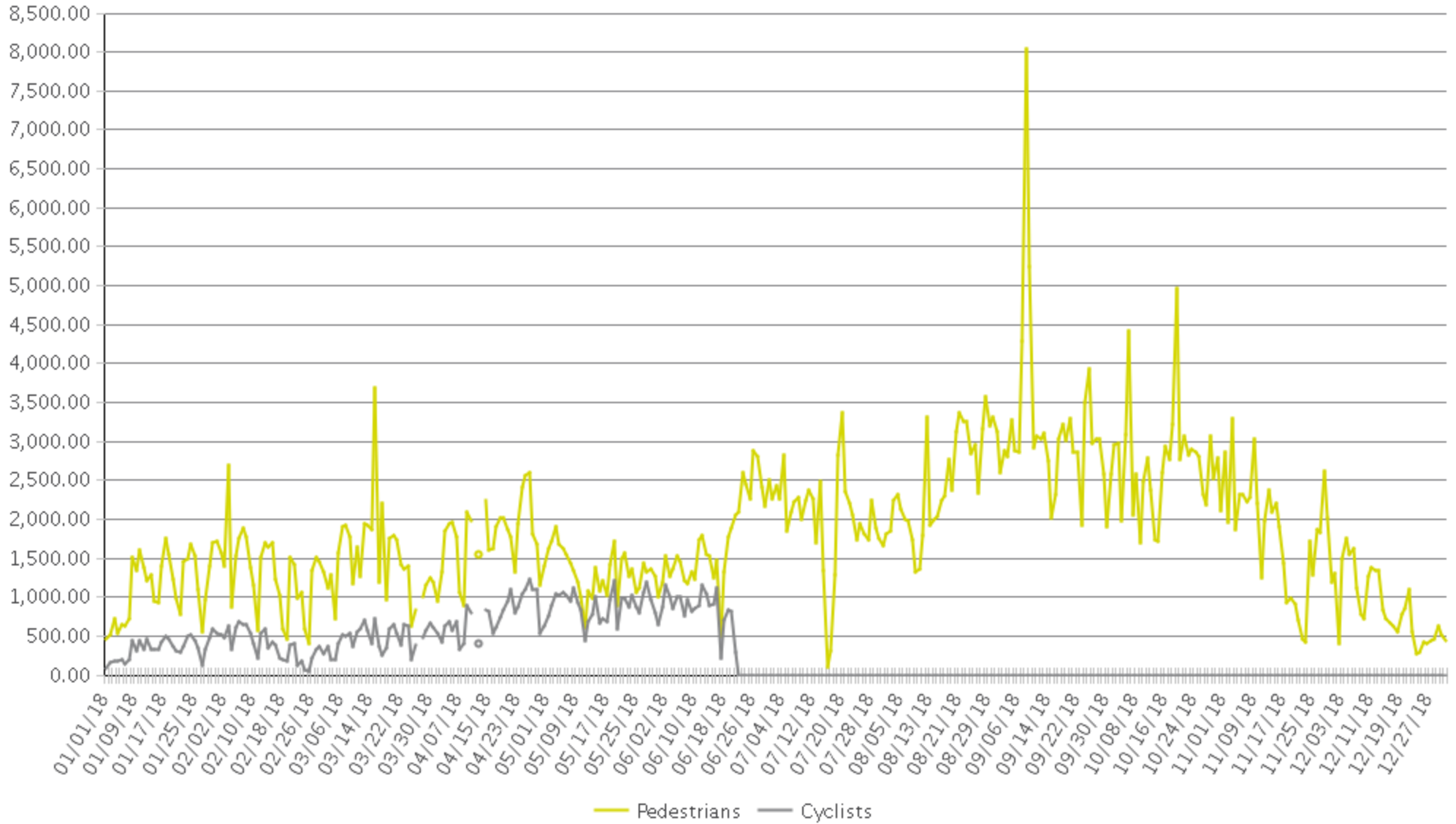
IN: In = South

OUT: Out = North



# Boise - Friendship Bridge

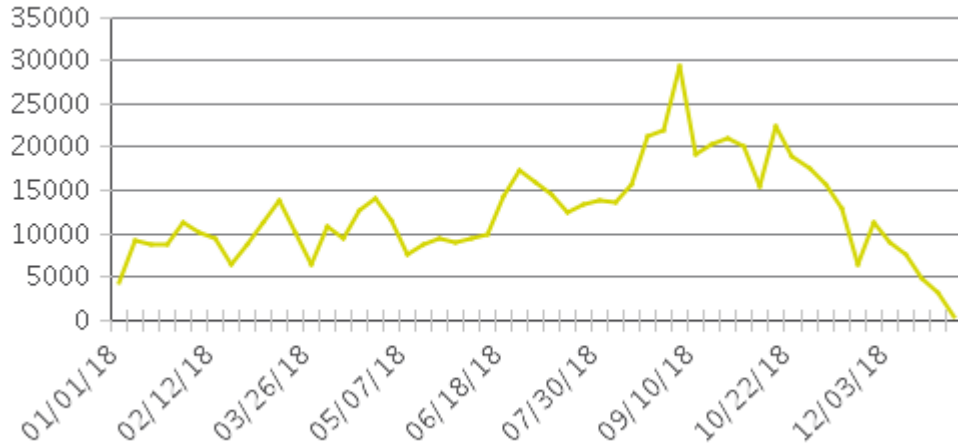
Period Analyzed: Monday, January 01, 2018 to Monday, December 31, 2018



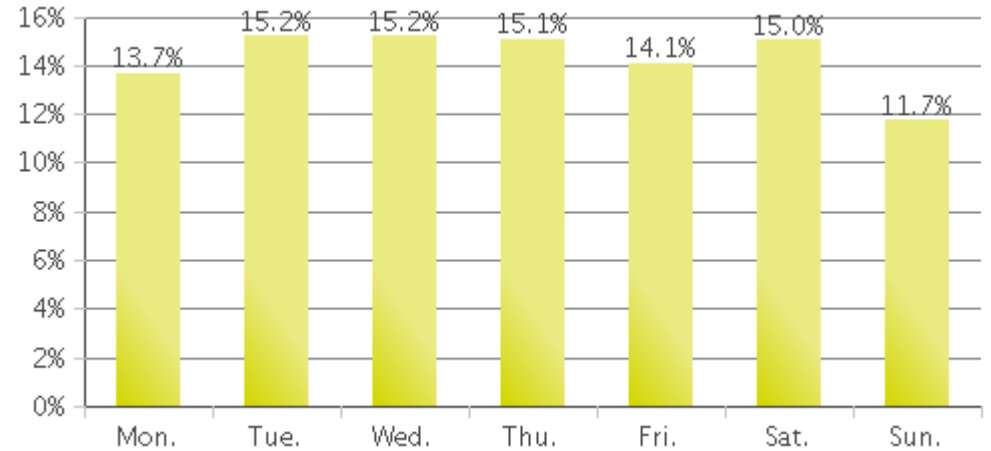
# Boise - Friendship Bridge (Pedestrians)

Period Analyzed: Monday, January 01, 2018 to Monday, December 31, 2018

### Weekly Traffic



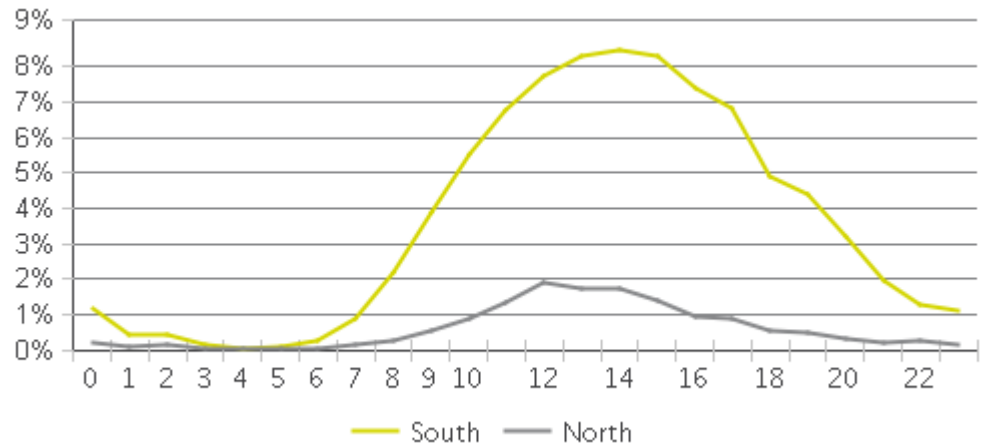
### Weekly Profile



### Hourly Profile during Weekdays



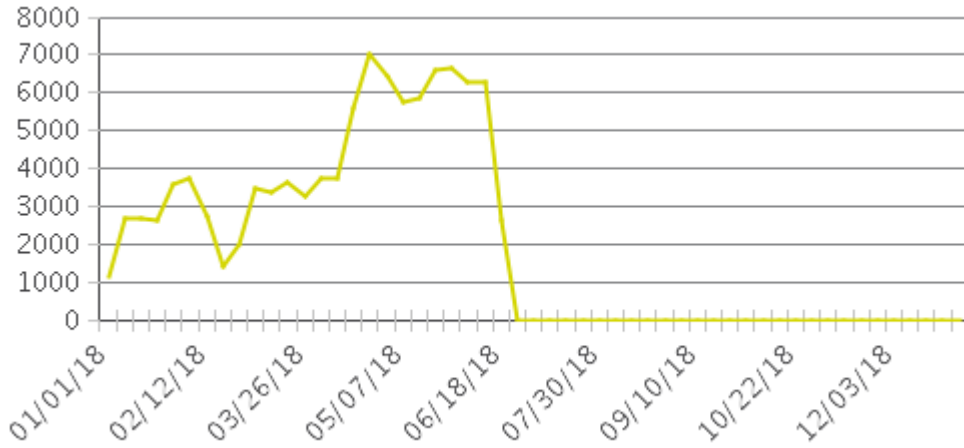
### Hourly Profile during the Weekend



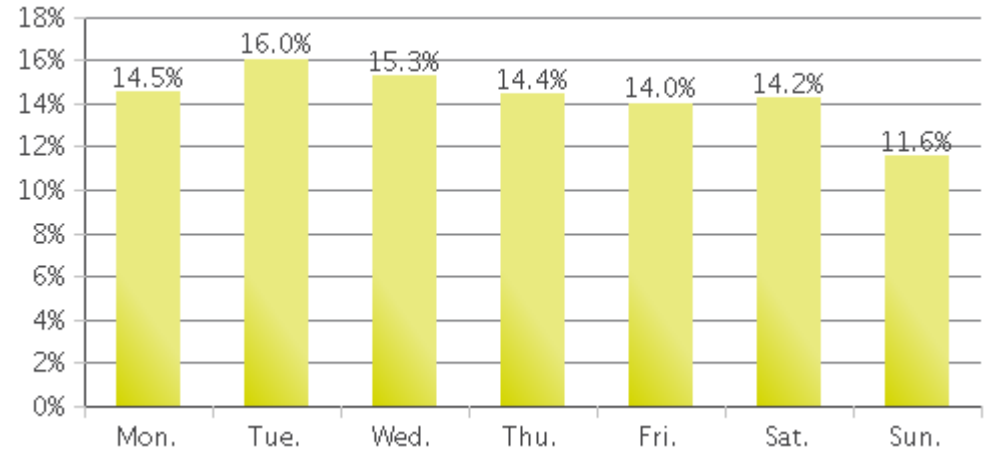
# Boise - Friendship Bridge (Cyclists)

Period Analyzed: Monday, January 01, 2018 to Monday, December 31, 2018

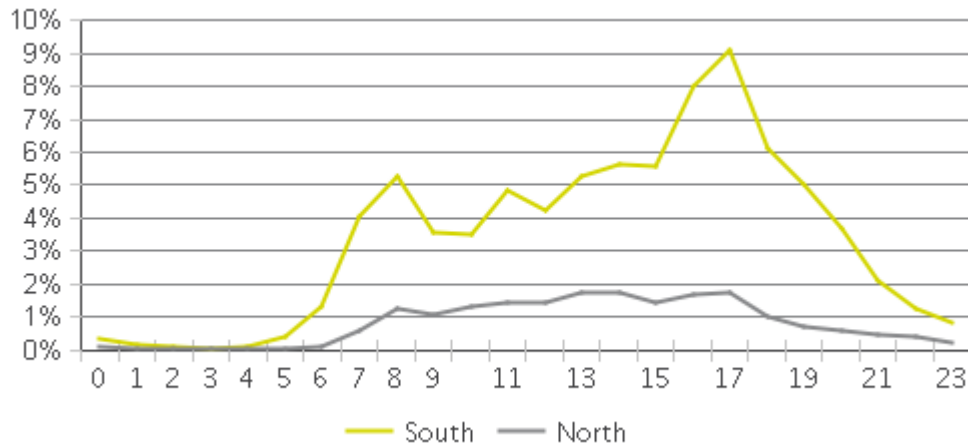
### Weekly Traffic



### Weekly Profile



### Hourly Profile during Weekdays



### Hourly Profile during the Weekend

