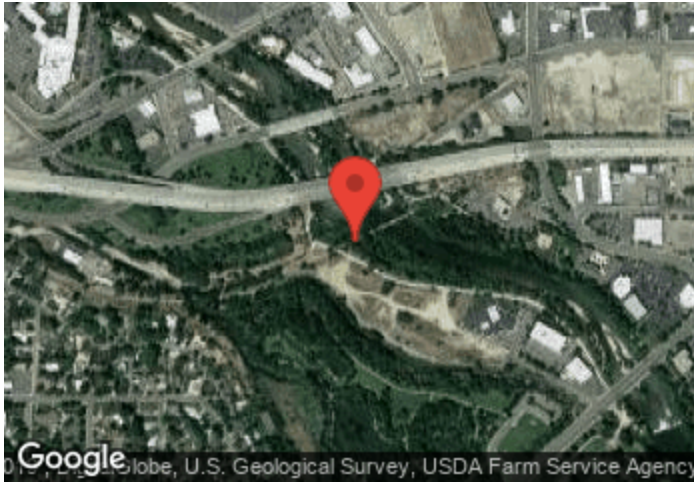


Boise - Trestle Bridge

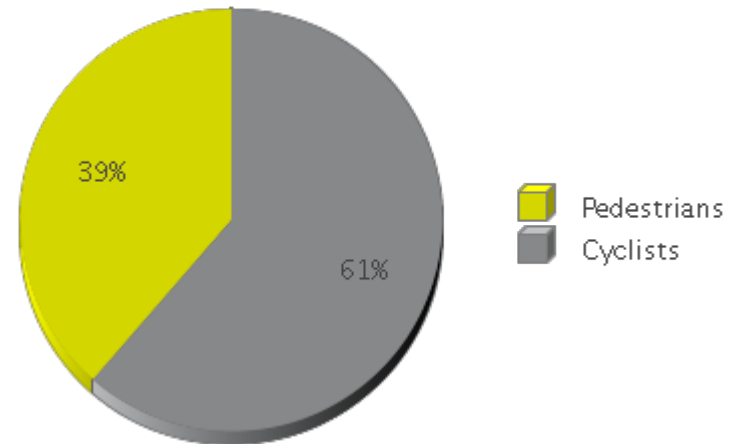
Period Analyzed: Monday, January 01, 2018 to Monday, December 31, 2018



	Total Traffic for the Analyzed Period	Daily Average	Busiest Day of the Week	Busiest Month of the Year	Distribution	
					IN	OUT
Pedestrians	69,256	193	Saturday	May 18: 7,869	52	48
Cyclists	110,038	307	Saturday	June 18: 16,263	50	50

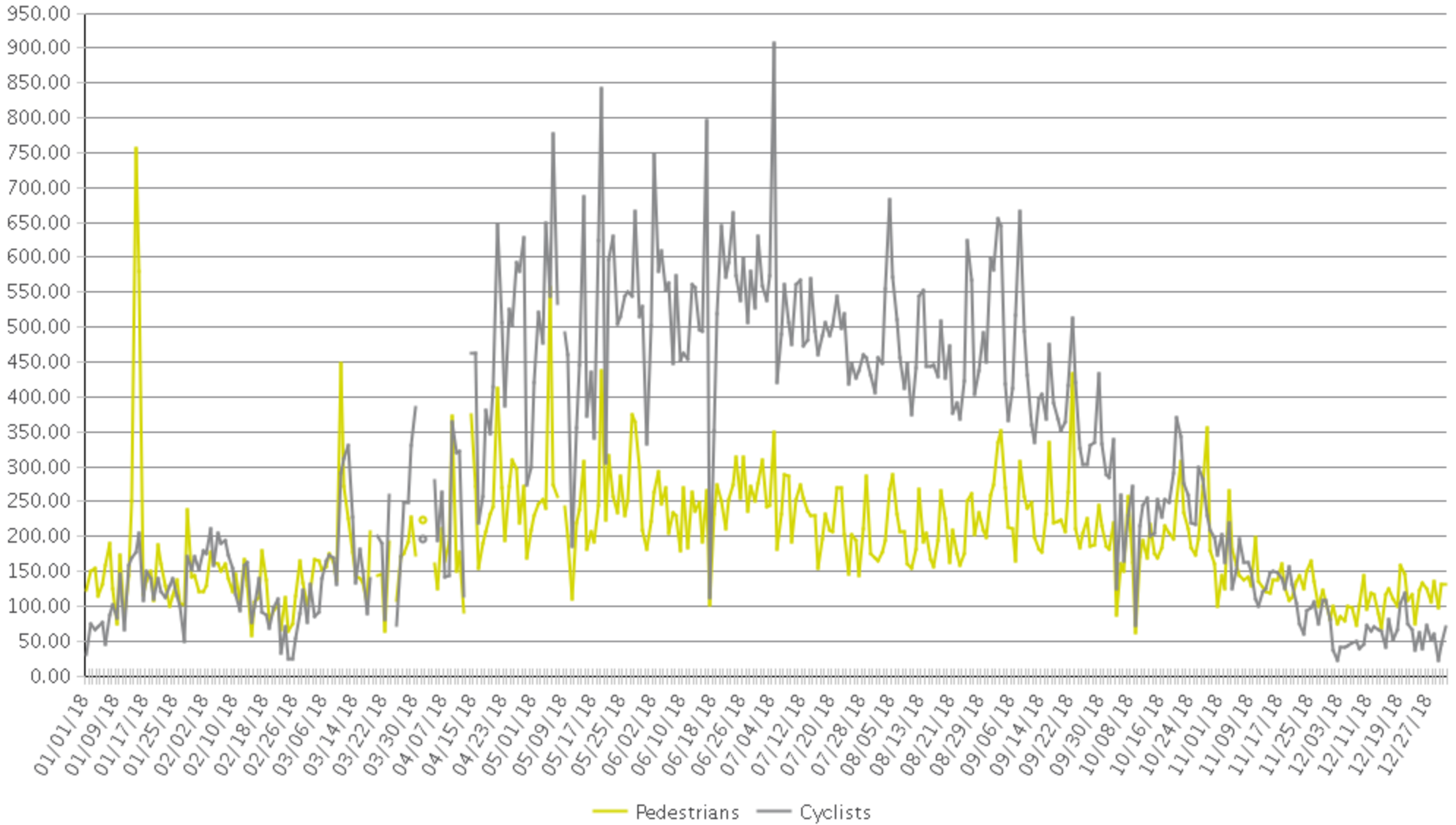
IN: In = West

OUT: Out = East



Boise - Trestle Bridge

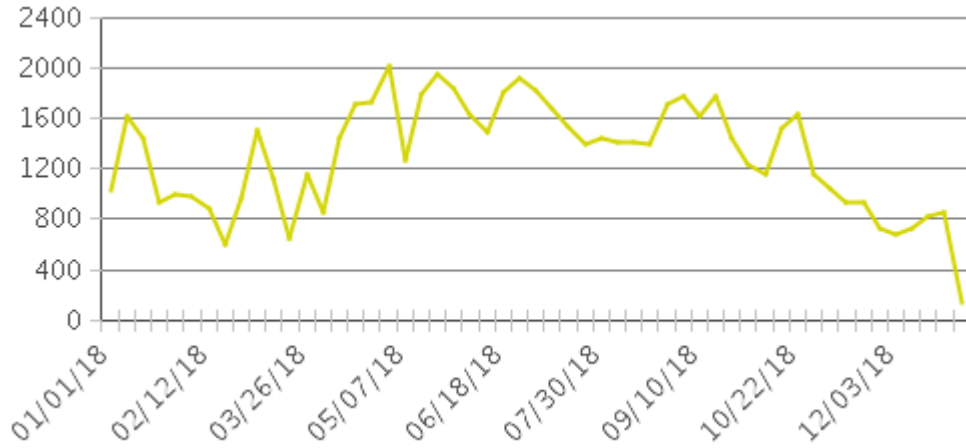
Period Analyzed: Monday, January 01, 2018 to Monday, December 31, 2018



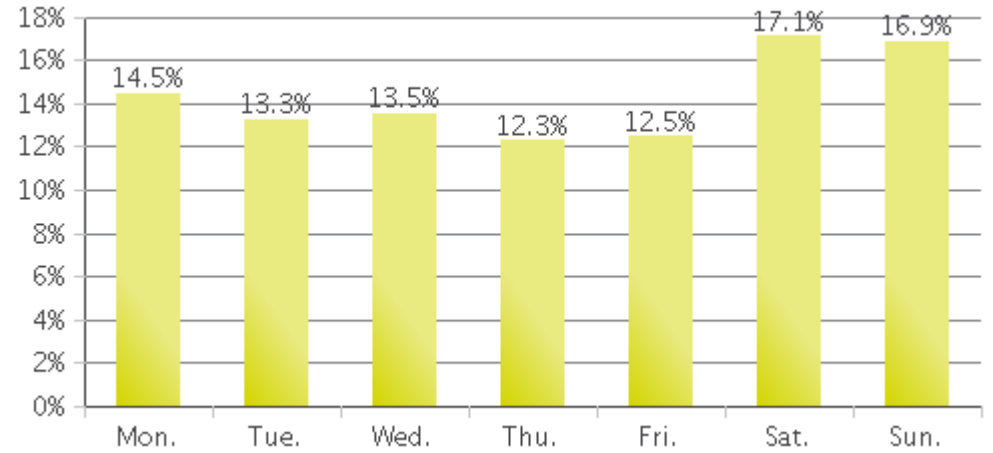
Boise - Trestle Bridge (Pedestrians)

Period Analyzed: Monday, January 01, 2018 to Monday, December 31, 2018

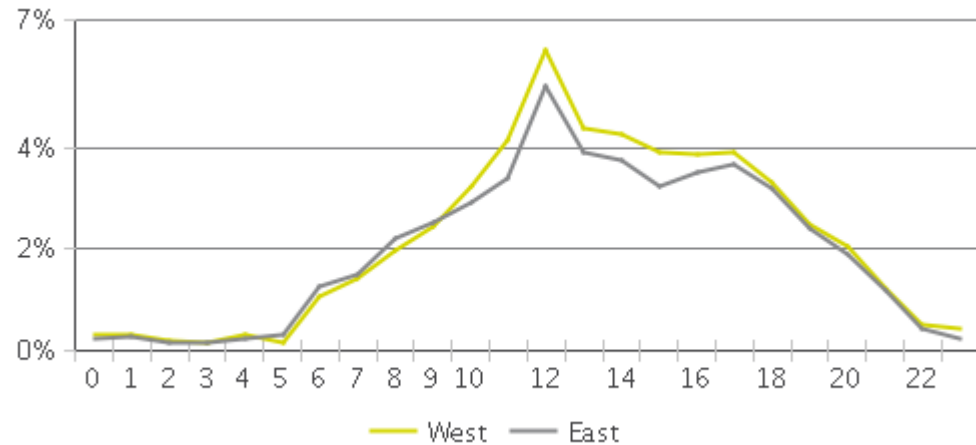
Weekly Traffic



Weekly Profile



Hourly Profile during Weekdays



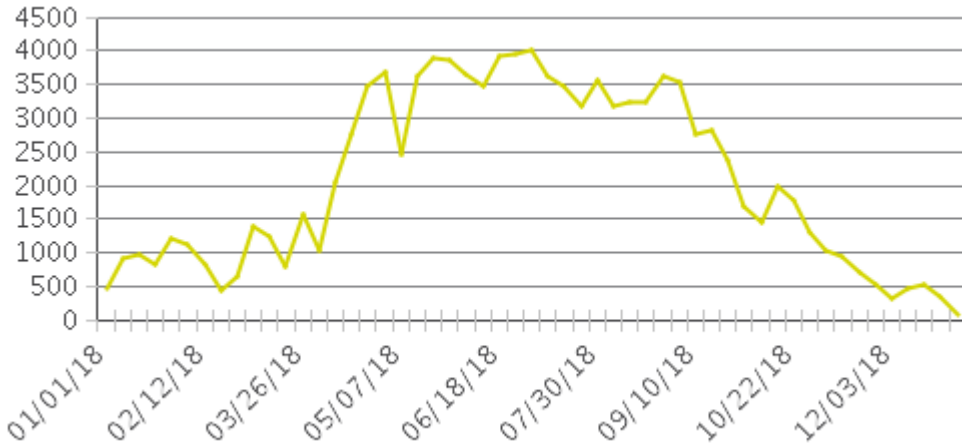
Hourly Profile during the Weekend



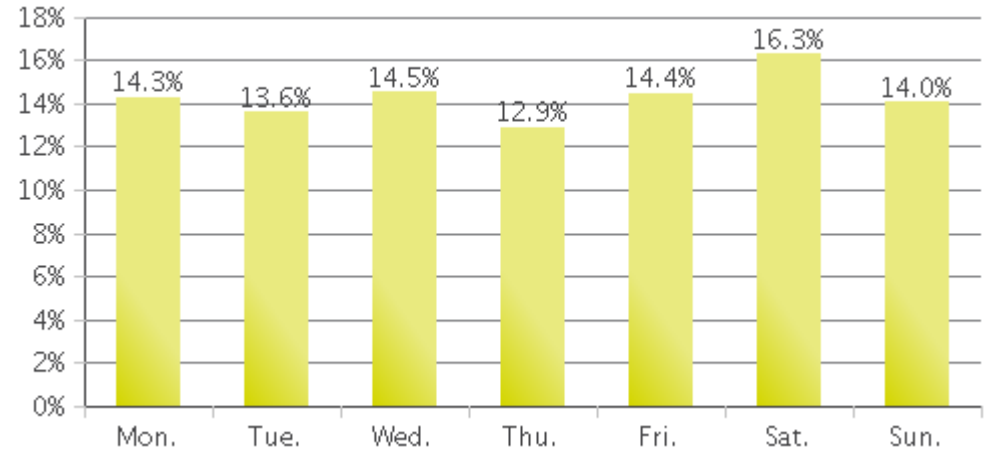
Boise - Trestle Bridge (Cyclists)

Period Analyzed: Monday, January 01, 2018 to Monday, December 31, 2018

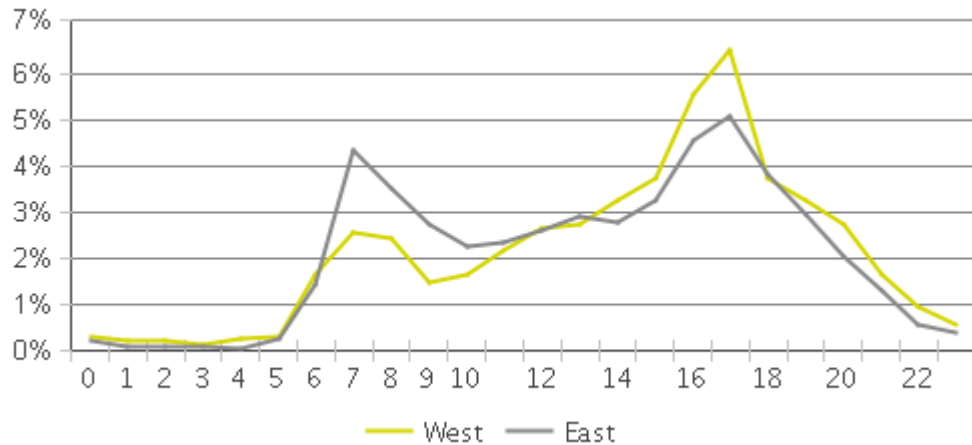
Weekly Traffic



Weekly Profile



Hourly Profile during Weekdays



Hourly Profile during the Weekend

