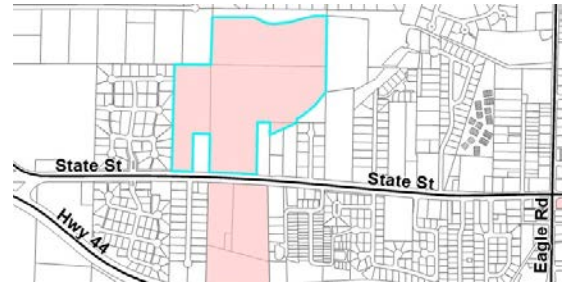


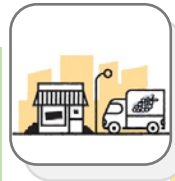
# Communities in Motion (CIM) Development Review Checklist

Development Name: Capella Eagle  
 CIM Vision Category: Existing Neighborhood  
 Consistent with CIM Vision? YES  
 New Households: 108      New Jobs: 0



**Safety**  
 How safe and comfortable is the nearest major road (minor arterial or above) for bicyclists and pedestrians? Analysis is limited to existing roadway conditions.  
*State Highway 44/State Street*

Pedestrian level of stress	<input checked="" type="checkbox"/>
Bicycle level of stress	<input checked="" type="checkbox"/>



**Economic Vitality**  
 To what extent does the project enable people, government, and businesses to prosper?

Economic Activity Center Access	<input checked="" type="checkbox"/>
Impact on Existing Surrounding Farmland	<input checked="" type="checkbox"/>
Net Fiscal Impact	N/A



**Convenience**  
 What services are available within 0.5 miles (green) or 1 mile (yellow) of the project?

Nearest bus stop	<input checked="" type="checkbox"/>
Nearest public school	<input checked="" type="checkbox"/>
Nearest public park	<input checked="" type="checkbox"/>



**Quality of Life**  
 Checked boxes indicate that additional information is attached.

Active Transportation	<input type="checkbox"/>
Automobile Transportation	<input type="checkbox"/>
Public Transportation	<input checked="" type="checkbox"/>
Roadway Projects	<input checked="" type="checkbox"/>

Improves performance       Does not improve or reduce performance       Reduces performance

**Comments:**  
 While the site is not currently served by public transportation, several future public transportation projects have been identified on State Street. Valley Regional Transit (VRT)'s [Transportation Development Plan 2023-2027](#) identifies a future express bus route (ID number FR-017-0) with service to communities along State Highway 44/State Street and Meridian, Nampa and Caldwell. The project is in preliminary development. *Communities in Motion 2050* also identifies State Street (North Star Road to Main Street Station) for future Premium bus route improvements. Densities proposed are unlikely to support future transit in the area.

**Who we are:** The Community Planning Association of Southwest Idaho (COMPASS) is the metropolitan planning organization for Ada and Canyon Counties. This review evaluates whether land developments are consistent with [Communities in Motion](#), the regional long-range transportation plan for Ada and Canyon Counties. This checklist is not intended to be prescriptive, but rather a guidance document. Past checklists are available [online](#). See the [Development Review User Guide](#) for more information on the red, yellow, and green checklist thresholds.

Sent: 4/24/23

## Complete Network Appendix

Checkmarks (✓) below indicate suggested changes to a site plan, based on the [COMPASS Complete Network Policy \(No. 2022-01\)](#). Both the Complete Network Policy and site-specific suggestions are intended to better align land use with identified transportation uses in the corridor. Please see the Complete Network [map](#) for primary and secondary uses for roadways (minor arterial and above) in Ada and Canyon Counties.

<b>Corridor Name:</b>	State Highway 44/State Street
<b>Primary Use:</b>	Public Transportation, Proposed Bicycle Facility
<b>Secondary Use:</b>	N/A

### Land Use to Support Public Transportation

- ✓ Provide more than 8 housing units per acre; or a combination of 25 total persons (population + jobs) per acre, near future transit stops
- ✓ Orient buildings toward potential transit corridors, with parking on the back side rather than the street side
- ✓ Where appropriate, cluster buildings near intersections to consolidate transit stops and street crossings
- ✓ Incorporate retail and other uses into the development, drawing customers both from the transit-oriented development and nearby areas

The COMPASS-compiled catalog of Transit Oriented Developments in the [Communities in Motion Implementation Guidebook](#) provides examples of how higher-density development can integrate in existing neighborhoods.

# Long-Term Funded and Unfunded Capital Projects

**CIM Priority Corridor:**

State Street/State Highway 44 (North Star Road to Main Street Station)

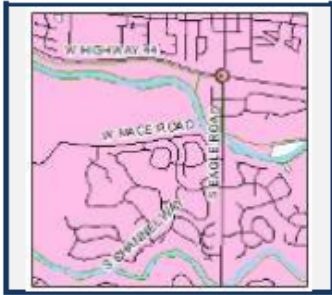
Premium bus route improvements (15-minute service frequencies and weekend service) on State Street from Main Street Station to North Star Road is the number two priority unfunded public transportation project in *Communities in Motion 2050*.

More information on transportation needs and projects based on forecasted future growth is available at: <https://cim2050.compassidaho.org/projects-and-priorities/project-priorities/>

## Short-Term Funded Capital Projects

### SH-44 (State Street) and SH-55 (Eagle Road) Intersection Improvements, Eagle

Regionally Significant:   Inflated **TIP Achievement:**  
 Key #: 13476 Health  
 Requesting Agency: ITD Active Transportation  
 Project Year: 2022 Safety  
 Total Previous Allocations: \$0 System Performance  
 Total Programmed Budget: (\$350)  
 Total Cost (Prev. + Prog.): (\$350)



**Project Description**  
 Expand the current intersection configuration to increase capacity, as well as remove all four existing free-flowing right-turn lanes at State Highway 44 (State Street) and State Highway 55 (Eagle Road) in the City of Eagle. Work includes pavement widening and resurfacing, installation of raised medians, signage and striping improvements, pedestrian access, signalization, Intelligent Transportation System improvements, and localized drainage improvements.

Funding Source		State							Program		State Hwy - Safety & Capacity (Capacity)		Local Match		100.00%	
Cost Year*	Preliminary Engineering	Preliminary Engineering Consulting	Right-of-Way	Utilities	Construction Engineering	Construction	Construction	Total	Federal Share	Local Share						
2023	0	0	0	0	0	-350	-350	0	0	-350			0	-350		
<b>Fund Totals:</b>	0	0	0	0	0	-350	-350	0	0	-350			0	-350		

Source: *The COMPASS Transportation Improvement Program (TIP). The TIP is a short-range (seven-year) budget of transportation projects for which federal funds are anticipated, along with non-federally funded projects that are regionally significant and is available at:*

[https://www.compassidaho.org/documents/prodserv/trans/FY22/FY23\\_29TIPdoc.pdf](https://www.compassidaho.org/documents/prodserv/trans/FY22/FY23_29TIPdoc.pdf)