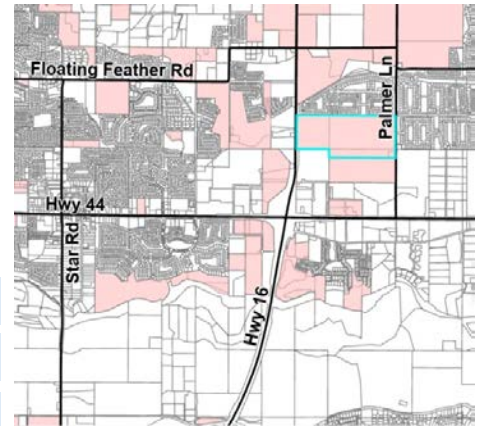


Communities in Motion 2050 Development Checklist

The Community Planning Association of Southwest Idaho (COMPASS) is the metropolitan planning organization (MPO) for Ada and Canyon Counties. COMPASS has developed this review as a tool for local governments to evaluate whether land developments are consistent with the goals of Communities in Motion 2050 (CIM 2050), the regional long-range transportation plan for Ada and Canyon Counties. This checklist is not intended to be prescriptive, but rather a guidance document based on CIM 2050 goals.



Development Name: Cascade Springs Subdivision
CIM Vision Category: Future Neighborhood **New Jobs:** 0
CIM Corridor: None **New Households:** 400



Safety

Level of Stress measures how safe and comfortable a bicyclist or pedestrian would feel on a corridor and considers multimodal infrastructure number of vehicle lanes and travel speeds.

Pedestrian level of stress N/A
 Bicycle level of stress N/A



Economic Vitality

These tools evaluate whether the location of the proposal supports economic vitality by growing near existing public services.

Activity Center Access
 Farmland Preservation
 Net Fiscal Impact N/A
 Within CIM Forecast



Convenience

Residents who live or work less than 1/2 mile from critical services have more transportation choices, especially for vulnerable populations

Nearest bus stop
 Nearest public school
 Nearest public park



Quality of Life

Checked boxes indicate that additional information is attached.

Active Transportation
 Automobile Transportation
 Public Transportation
 Roadway Capacity



Improves performance



Does not improve or reduce performance



Reduces performance

Comments:

Based on the site plan provided, COMPASS has no comments.

Communities in Motion 2050
[2020 Change in Motion Report](#)
[Development Review Process](#)

Web: www.compassidaho.org
 Email: info@compassidaho.org



