

FY2020-2026 Regional Transportation Improvement Program

Detailed Project List (All Values in Thousands of Dollars)

All costs in current dollars



10th Avenue ITS and Overlay, Caldwell

Key # : 13905

Requesting Agency: City of Caldwell

Project Year: PD

Total Previous Expenditures: \$241

Total Programmed Cost: \$1,205

Total Cost (Prev. + Prog.): \$1,446

Project Description : Overlay a one-half mile section of 10th Avenue in downtown Caldwell from the railroad overpass to I-84. Install intelligent transportation system (ITS) components and bring pedestrian facilities to current standards.

COMPASS PM:

Maintenance
Freight Movement and Economic Vitality
Environmental Sustainability
Land Use
Community Infrastructure

Federal PM:



Funding Source STP-U			Program Local Hwy - Urban					Local Match 7.34%	
Cost Year*	Preliminary Engineering	Preliminary Engineering Consulting	Right-of-Way	Utilities	Construction Engineering	Construction	Total	Federal Share	Local Share
PD	0	0	0	0	154	1,051	1,205	1,117	88
Fund Totals:	\$0	\$0	\$0	\$0	\$154	\$1,051	\$1,205	\$1,117	\$88

3rd Avenue and West Industrial Road Intersection Improvements, Nampa

Key # : 22103

Requesting Agency: City of Nampa

Project Year: 2022

Total Previous Expenditures: \$0

Total Programmed Cost: \$5,774

Total Cost (Prev. + Prog.): \$5,774

Project Description : Install a new signalized intersection approximately ¼ mile south of the existing Franklin Boulevard and Industrial Road intersection in the City of Nampa. Work will include improvements to existing intersections at Franklin Boulevard and Industrial Road, closing Franklin Boulevard and 3rd Avenue North with cul-de-sacs, building a new local street east of Franklin Boulevard with a new structure at the Phyllis Canal crossing and a relocated at-grade rail crossing, building a new local street west of Franklin Boulevard requiring a new structure at the Mason Creek crossing, and improvements to 5th Avenue North. Access improvements along Franklin Boulevard (near Jacksons store) will be addressed to reduce conflict points.

COMPASS PM:

Freight Movement and Economic Vitality
Community Infrastructure
Congestion Reduction/System Reliability
Transportation Safety

Federal PM:



Funding Source Freight			Program State Hwy - Freight					Local Match 7.34%	
Cost Year*	Preliminary Engineering	Preliminary Engineering Consulting	Right-of-Way	Utilities	Construction Engineering	Construction	Total	Federal Share	Local Share
2020	50	450	0	0	0	0	500	463	37
2022	0	0	0	0	0	5,274	5,274	4,887	387
Fund Totals:	\$50	\$450	\$0	\$0	\$0	\$5,274	\$5,774	\$5,350	\$424

*PD = Preliminary Development (projects with development activity but no programmed year of construction)

Bicycle and Pedestrian Bridge over North Channel of Boise River, Eagle

Key # : 20841

Requesting Agency: City of Eagle

Project Year: 2023

Total Previous Expenditures: \$257

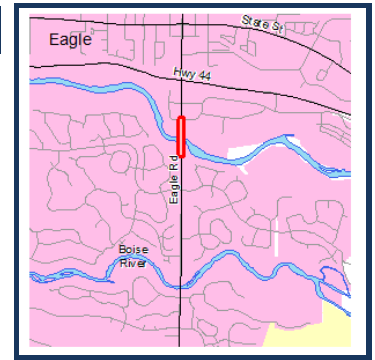
Total Programmed Cost: \$1,240

Total Cost (Prev. + Prog.): \$1,497

COMPASS PM:

Community Infrastructure
Health
Open Space
Transportation Safety
Land Use

Federal PM:



Project Description : Design and construct a bicycle and pedestrian bridge over the north channel of the Boise River adjacent to the SH-55 (Eagle Road) Bridge. The bicycle and pedestrian bridge will provide critical link between the Boise River Greenbelt, planned pathways, and a rapidly growing residential and commercial core area in the City of Eagle.

Funding Source TAP-TMA			Program Local Hwy - Transportation Alternatives					Local Match 7.34%	
Cost Year*	Preliminary Engineering	Preliminary Engineering Consulting	Right-of-Way	Utilities	Construction Engineering	Construction	Total	Federal Share	Local Share
2020	0	0	10	0	0	0	10	9	1
2023	0	0	0	0	0	32	32	30	2
Fund Totals:	\$0	\$0	\$10	\$0	\$0	\$32	\$42	\$39	\$3

Funding Source Local Participating			Program Hwy - Local Partnerships					Local Match 100.00%	
Cost Year*	Preliminary Engineering	Preliminary Engineering Consulting	Right-of-Way	Utilities	Construction Engineering	Construction	Total	Federal Share	Local Share
2023	0	0	0	0	123	937	1,060	0	1,060
Fund Totals:	\$0	\$0	\$0	\$0	\$123	\$937	\$1,060	\$0	\$1,060

Funding Source STP-TMA			Program Local Hwy - Transportation Management Area					Local Match 7.34%	
Cost Year*	Preliminary Engineering	Preliminary Engineering Consulting	Right-of-Way	Utilities	Construction Engineering	Construction	Total	Federal Share	Local Share
2020	0	0	63	0	0	0	63	58	5
2023	0	0	0	0	0	75	75	69	6
Fund Totals:	\$0	\$0	\$63	\$0	\$0	\$75	\$138	\$128	\$10

Capital Maintenance, Local, Boise Area - FY2022

Key # : 20006

COMPASS PM:

Federal PM:

Requesting Agency: ACHD

Maintenance

Project Year: 2022

Total Previous Expenditures: \$0

Total Programmed Cost: \$380

Total Cost (Prev. + Prog.): \$380

Project Description : Support the local maintenance program for arterials and collectors within the Boise Urbanized Area by developing maintenance projects to federal standards using local funds. This project could convert to federal-aid if funds become available.



Funding Source		Local Participating	Program Hwy - Local Partnerships				Local Match 100.00%		
Cost Year*	Preliminary Engineering	Preliminary Engineering Consulting	Right-of-Way	Utilities	Construction Engineering	Construction	Total	Federal Share	Local Share
2020	5	75	0	0	0	0	80	0	80
2022	0	0	0	0	0	300	300	0	300
Fund Totals:	\$5	\$75	\$0	\$0	\$0	\$300	\$380	\$0	\$380

Capital Maintenance, Local, Boise Area - FY2023

Key # : 20080

COMPASS PM:

Federal PM:

Requesting Agency: ACHD

Maintenance

Project Year: 2023

Total Previous Expenditures: \$0

Total Programmed Cost: \$380

Total Cost (Prev. + Prog.): \$380

Project Description : Support the local maintenance program for arterials and collectors within the Boise Urbanized Area by developing maintenance projects to federal standards using local funds. This project could convert to federal-aid if funds become available.



Funding Source		Local Participating	Program Hwy - Local Partnerships				Local Match 100.00%		
Cost Year*	Preliminary Engineering	Preliminary Engineering Consulting	Right-of-Way	Utilities	Construction Engineering	Construction	Total	Federal Share	Local Share
2021	5	75	0	0	0	0	80	0	80
2023	0	0	0	0	0	300	300	0	300
Fund Totals:	\$5	\$75	\$0	\$0	\$0	\$300	\$380	\$0	\$380

Capital Maintenance, Local, Boise Area - FY2024

Key # : 20683

COMPASS PM:

Federal PM:

Requesting Agency: ACHD

Maintenance

Project Year: 2024

Total Previous Expenditures: \$0

Total Programmed Cost: \$380

Total Cost (Prev. + Prog.): \$380

Project Description : Support the local maintenance program for arterials and collectors within the Boise Urbanized Area by developing maintenance projects to federal standards using local funds. This project could convert to federal-aid if funds become available.



Funding Source		Local Participating	Program Hwy - Local Partnerships				Local Match 100.00%		
Cost Year*	Preliminary Engineering	Preliminary Engineering Consulting	Right-of-Way	Utilities	Construction Engineering	Construction	Total	Federal Share	Local Share
2022	5	75	0	0	0	0	80	0	80
2024	0	0	0	0	0	300	300	0	300
Fund Totals:	\$5	\$75	\$0	\$0	\$0	\$300	\$380	\$0	\$380

Capital Maintenance, Local, Boise Area - FY2025

Key # : 21902

COMPASS PM:

Federal PM:

Requesting Agency: ACHD

Maintenance

Project Year: 2025

Total Previous Expenditures: \$0

Total Programmed Cost: \$380

Total Cost (Prev. + Prog.): \$380

Project Description : Supports the local maintenance program for arterials and collectors within the Boise Urbanized Area by developing maintenance projects to federal standards using local funds. This project could convert to federal-aid if funds become available.



Funding Source		Local Participating	Program Hwy - Local Partnerships				Local Match 100.00%		
Cost Year*	Preliminary Engineering	Preliminary Engineering Consulting	Right-of-Way	Utilities	Construction Engineering	Construction	Total	Federal Share	Local Share
2023	5	75	0	0	0	0	80	0	80
2025	0	0	0	0	0	300	300	0	300
Fund Totals:	\$5	\$75	\$0	\$0	\$0	\$300	\$380	\$0	\$380

Capital Maintenance, Local, Boise Area - FY2026

Key # : ORN22392

COMPASS PM:

Federal PM:

Requesting Agency: ACHD

Maintenance

Project Year: 2026

Total Previous Expenditures: \$0

Total Programmed Cost: \$380

Total Cost (Prev. + Prog.): \$380

Project Description : Supports the local maintenance program for arterials and collectors within the Boise Urbanized Area by developing maintenance projects to federal standards using local funds. This project could convert to federal-aid if funds become available.



Funding Source Local Participating			Program Hwy - Local Partnerships					Local Match	
Cost Year*	Preliminary Engineering	Preliminary Engineering Consulting	Right-of-Way	Utilities	Construction Engineering	Construction	Total	Federal Share	Local Share
2024	5	75	0	0	0	0	80	80	0
2026	0	0	0	0	0	300	300	300	0
Fund Totals:	\$5	\$75	\$0	\$0	\$0	\$300	\$380	\$380	\$0

Capital Maintenance, Phase 1, Boise Area - FY2020

Key # : 18728

COMPASS PM:

Federal PM:

Requesting Agency: ACHD

Maintenance

Project Year: 2020

Total Previous Expenditures: \$527

Total Programmed Cost: \$5,276

Total Cost (Prev. + Prog.): \$5,803

Project Description : Supplement the local maintenance program to complete work such as overlays on arterials and collectors in the Boise Urbanized Area.



Funding Source STP-TMA			Program Local Hwy - Transportation Management Area					Local Match 7.34%	
Cost Year*	Preliminary Engineering	Preliminary Engineering Consulting	Right-of-Way	Utilities	Construction Engineering	Construction	Total	Federal Share	Local Share
2020	0	0	0	0	688	4,588	5,276	4,889	387
Fund Totals:	\$0	\$0	\$0	\$0	\$688	\$4,588	\$5,276	\$4,889	\$387

Capital Maintenance, Phase 1, Boise Area - FY2021

Key # : 18701

COMPASS PM:

Federal PM:

Requesting Agency: ACHD

Maintenance

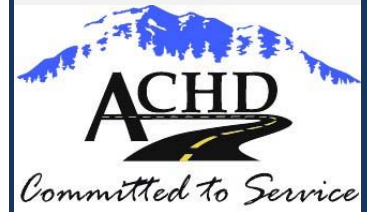
Project Year: 2021

Total Previous Expenditures: \$494

Total Programmed Cost: \$4,947

Total Cost (Prev. + Prog.): \$5,441

Project Description : Supplement the local maintenance program to complete work such as overlays on arterials and collectors in the Boise Urbanized Area.



Funding Source STP-TMA			Program Local Hwy - Transportation Management Area					Local Match 7.34%	
Cost Year*	Preliminary Engineering	Preliminary Engineering Consulting	Right-of-Way	Utilities	Construction Engineering	Construction	Total	Federal Share	Local Share
2021	0	0	0	0	645	4,302	4,947	4,584	363
Fund Totals:	\$0	\$0	\$0	\$0	\$645	\$4,302	\$4,947	\$4,584	\$363

Capital Maintenance, Phase 1, Boise Area - FY2022

Key # : 19465

COMPASS PM:

Federal PM:

Requesting Agency: ACHD

Maintenance

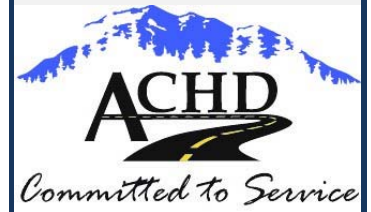
Project Year: 2022

Total Previous Expenditures: \$0

Total Programmed Cost: \$5,970

Total Cost (Prev. + Prog.): \$5,970

Project Description : Supplement the local maintenance program to complete work such as overlays on arterials and collectors in the Boise Urbanized Area.



Funding Source STP-TMA			Program Local Hwy - Transportation Management Area					Local Match 7.34%	
Cost Year*	Preliminary Engineering	Preliminary Engineering Consulting	Right-of-Way	Utilities	Construction Engineering	Construction	Total	Federal Share	Local Share
2020	20	523	0	0	0	0	543	503	40
2022	0	0	0	0	708	4,719	5,427	5,029	398
Fund Totals:	\$20	\$523	\$0	\$0	\$708	\$4,719	\$5,970	\$5,532	\$438

Capital Maintenance, Phase 1, Boise Area - FY2023

Key # : 20259

COMPASS PM:

Federal PM:

Requesting Agency: ACHD

Maintenance

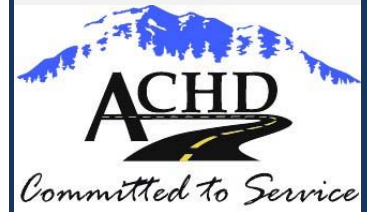
Project Year: 2023

Total Previous Expenditures: \$0

Total Programmed Cost: \$5,820

Total Cost (Prev. + Prog.): \$5,820

Project Description : Supplement the local maintenance program for arterials and collectors within the Boise Urbanized Area.



Funding Source STP-TMA			Program Local Hwy - Transportation Management Area					Local Match 7.34%	
Cost Year*	Preliminary Engineering	Preliminary Engineering Consulting	Right-of-Way	Utilities	Construction Engineering	Construction	Total	Federal Share	Local Share
2021	20	509	0	0	0	0	529	490	39
2023	0	0	0	0	690	4,601	5,291	4,903	388
Fund Totals:	\$20	\$509	\$0	\$0	\$690	\$4,601	\$5,820	\$5,393	\$427

Capital Maintenance, Phase 1, Boise Area - FY2024

Key # : 20674

COMPASS PM:

Federal PM:

Requesting Agency: ACHD

Maintenance

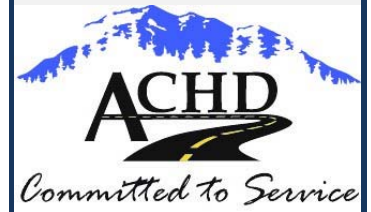
Project Year: 2024

Total Previous Expenditures: \$0

Total Programmed Cost: \$5,579

Total Cost (Prev. + Prog.): \$5,579

Project Description : Supplement the local maintenance program for arterials and collectors within the Boise Urbanized Area.



Funding Source STP-TMA			Program Local Hwy - Transportation Management Area					Local Match 7.34%	
Cost Year*	Preliminary Engineering	Preliminary Engineering Consulting	Right-of-Way	Utilities	Construction Engineering	Construction	Total	Federal Share	Local Share
2022	20	487	0	0	0	0	507	470	37
2024	0	0	0	0	662	4,410	5,072	4,700	372
Fund Totals:	\$20	\$487	\$0	\$0	\$662	\$4,410	\$5,579	\$5,170	\$409

Capital Maintenance, Phase 1, Boise Area - FY2025

Key # : 21896

COMPASS PM:

Federal PM:

Requesting Agency: ACHD

Maintenance

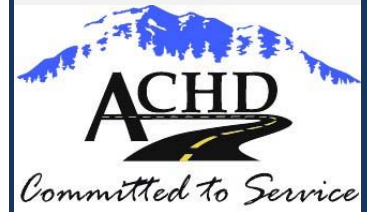
Project Year: 2025

Total Previous Expenditures: \$0

Total Programmed Cost: \$5,547

Total Cost (Prev. + Prog.): \$5,547

Project Description : Supplement the local maintenance program to complete work such as overlays on arterials and collectors in the Boise Urbanized Area.



Funding Source STP-TMA			Program Local Hwy - Transportation Management Area					Local Match 7.34%	
Cost Year*	Preliminary Engineering	Preliminary Engineering Consulting	Right-of-Way	Utilities	Construction Engineering	Construction	Total	Federal Share	Local Share
2023	20	484	0	0	0	0	504	467	37
2025	0	0	0	0	658	4,385	5,043	4,673	370
Fund Totals:	\$20	\$484	\$0	\$0	\$658	\$4,385	\$5,547	\$5,140	\$407

Capital Maintenance, Phase 1, Boise Area - FY2026

Key # : ORN22390

COMPASS PM:

Federal PM:

Requesting Agency: ACHD

Maintenance

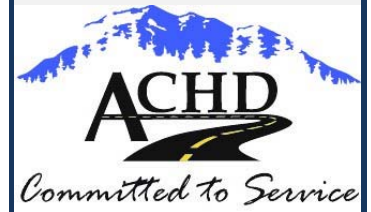
Project Year: 2026

Total Previous Expenditures: \$0

Total Programmed Cost: \$5,547

Total Cost (Prev. + Prog.): \$5,547

Project Description : Supplement the local maintenance program to complete work such as overlays on arterials and collectors in the Boise Urbanized Area.



Funding Source STP-TMA			Program Local Hwy - Transportation Management Area					Local Match 7.34%	
Cost Year*	Preliminary Engineering	Preliminary Engineering Consulting	Right-of-Way	Utilities	Construction Engineering	Construction	Total	Federal Share	Local Share
2024	20	484	0	0	0	0	504	467	37
2026	0	0	0	0	658	4,385	5,043	4,673	370
Fund Totals:	\$20	\$484	\$0	\$0	\$658	\$4,385	\$5,547	\$5,140	\$407

Capital Maintenance, Phase 2, Boise Area - FY2020

Key # : 19887

COMPASS PM:

Federal PM:

Requesting Agency: ACHD

Maintenance

Project Year: 2020

Total Previous Expenditures: \$0

Total Programmed Cost: \$2,262

Total Cost (Prev. + Prog.): \$2,262

Project Description : Supplement the local maintenance program for arterials and collectors within the Boise Urbanized Area.



Funding Source STP-TMA			Program Local Hwy - Transportation Management Area					Local Match 7.34%	
Cost Year*	Preliminary Engineering	Preliminary Engineering Consulting	Right-of-Way	Utilities	Construction Engineering	Construction	Total	Federal Share	Local Share
2020	0	0	0	0	295	1,967	2,262	2,096	166
Fund Totals:	\$0	\$0	\$0	\$0	\$295	\$1,967	\$2,262	\$2,096	\$166

Capital Maintenance, Phase 2, Boise Area - FY2021

Key # : 20129

COMPASS PM:

Federal PM:

Requesting Agency: ACHD

Maintenance

Project Year: 2021

Total Previous Expenditures: \$213

Total Programmed Cost: \$2,120

Total Cost (Prev. + Prog.): \$2,333

Project Description : Supplement the local maintenance program for arterials and collectors within the Boise Urbanized Area.



Funding Source STP-TMA			Program Local Hwy - Transportation Management Area					Local Match 7.34%	
Cost Year*	Preliminary Engineering	Preliminary Engineering Consulting	Right-of-Way	Utilities	Construction Engineering	Construction	Total	Federal Share	Local Share
2021	0	0	0	0	276	1,844	2,120	1,964	156
Fund Totals:	\$0	\$0	\$0	\$0	\$276	\$1,844	\$2,120	\$1,964	\$156

Capital Maintenance, Phase 2, Boise Area - FY2022

Key # : 20122

COMPASS PM:

Federal PM:

Requesting Agency: ACHD

Maintenance

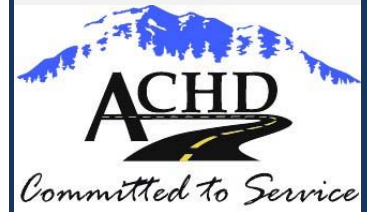
Project Year: 2022

Total Previous Expenditures: \$0

Total Programmed Cost: \$2,559

Total Cost (Prev. + Prog.): \$2,559

Project Description : Supplement the local maintenance program for arterials and collectors within the Boise Urbanized Area.



Funding Source STP-TMA			Program Local Hwy - Transportation Management Area					Local Match 7.34%	
Cost Year*	Preliminary Engineering	Preliminary Engineering Consulting	Right-of-Way	Utilities	Construction Engineering	Construction	Total	Federal Share	Local Share
2020	9	224	0	0	0	0	233	216	17
2022	0	0	0	0	303	2,023	2,326	2,155	171
Fund Totals:	\$9	\$224	\$0	\$0	\$303	\$2,023	\$2,559	\$2,371	\$188

Capital Maintenance, Phase 2, Boise Area - FY2023

Key # : 19993

COMPASS PM:

Federal PM:

Requesting Agency: ACHD

Maintenance

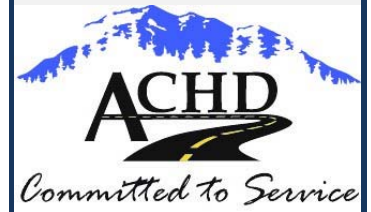
Project Year: 2023

Total Previous Expenditures: \$0

Total Programmed Cost: \$2,490

Total Cost (Prev. + Prog.): \$2,490

Project Description : Supplement the local maintenance program for arterials and collectors within the Boise Urbanized Area.



Funding Source STP-TMA			Program Local Hwy - Transportation Management Area					Local Match 7.34%	
Cost Year*	Preliminary Engineering	Preliminary Engineering Consulting	Right-of-Way	Utilities	Construction Engineering	Construction	Total	Federal Share	Local Share
2021	9	213	0	0	0	0	222	206	16
2023	0	0	0	0	296	1,972	2,268	2,102	166
Fund Totals:	\$9	\$213	\$0	\$0	\$296	\$1,972	\$2,490	\$2,307	\$183

Capital Maintenance, Phase 2, Boise Area - FY2024

Key # : 20538

COMPASS PM:

Federal PM:

Requesting Agency: ACHD

Maintenance

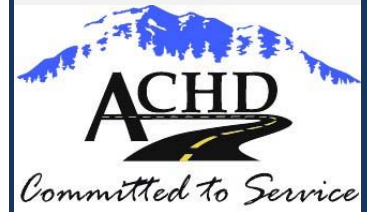
Project Year: 2024

Total Previous Expenditures: \$0

Total Programmed Cost: \$2,391

Total Cost (Prev. + Prog.): \$2,391

Project Description : Supplement the local maintenance program for arterials and collectors within the Boise Urbanized Area.



Funding Source STP-TMA			Program Local Hwy - Transportation Management Area					Local Match 7.34%	
Cost Year*	Preliminary Engineering	Preliminary Engineering Consulting	Right-of-Way	Utilities	Construction Engineering	Construction	Total	Federal Share	Local Share
2022	9	208	0	0	0	0	217	201	16
2024	0	0	0	0	284	1,890	2,174	2,014	160
Fund Totals:	\$9	\$208	\$0	\$0	\$284	\$1,890	\$2,391	\$2,216	\$175

Capital Maintenance, Phase 2, Boise Area - FY2025

Key # : 21898

COMPASS PM:

Federal PM:

Requesting Agency: ACHD

Maintenance

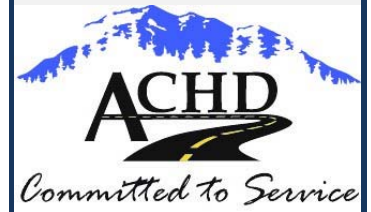
Project Year: 2025

Total Previous Expenditures: \$0

Total Programmed Cost: \$2,377

Total Cost (Prev. + Prog.): \$2,377

Project Description : Supplement the local maintenance program to complete work such as overlays on arterials and collectors in the Boise Urbanized Area.



Funding Source STP-TMA			Program Local Hwy - Transportation Management Area					Local Match 7.34%	
Cost Year*	Preliminary Engineering	Preliminary Engineering Consulting	Right-of-Way	Utilities	Construction Engineering	Construction	Total	Federal Share	Local Share
2023	9	207	0	0	0	0	216	200	16
2025	0	0	0	0	282	1,879	2,161	2,002	159
Fund Totals:	\$9	\$207	\$0	\$0	\$282	\$1,879	\$2,377	\$2,203	\$174

Capital Maintenance, Phase 2, Boise Area - FY2026

Key # : ORN22391

COMPASS PM:

Federal PM:

Requesting Agency: ACHD

Maintenance

Project Year: 2026

Total Previous Expenditures: \$0

Total Programmed Cost: \$2,377

Total Cost (Prev. + Prog.): \$2,377

Project Description : Supplement the local maintenance program to complete work such as overlays on arterials and collectors in the Boise Urbanized Area.



Funding Source STP-TMA			Program Local Hwy - Transportation Alternatives				Local Match 7.34%		
Cost Year*	Preliminary Engineering	Preliminary Engineering Consulting	Right-of-Way	Utilities	Construction Engineering	Construction	Total	Federal Share	Local Share
2024	9	207	0	0	0	0	216	200	16
2026	0	0	0	0	282	1,879	2,161	2,002	159
Fund Totals:	\$9	\$207	\$0	\$0	\$282	\$1,879	\$2,377	\$2,203	\$174

Capital Maintenance, Phase 3, Boise Area - FY2020

Key # : 19847

COMPASS PM:

Federal PM:

Requesting Agency: ACHD

Maintenance

Project Year: 2020

Total Previous Expenditures: \$62

Total Programmed Cost: \$300

Total Cost (Prev. + Prog.): \$362

Project Description : Support the local maintenance program for arterials and collectors within the Boise Urbanized Area.



Funding Source Local Participating			Program Hwy - Local Partnerships				Local Match 100.00%		
Cost Year*	Preliminary Engineering	Preliminary Engineering Consulting	Right-of-Way	Utilities	Construction Engineering	Construction	Total	Federal Share	Local Share
2020	0	0	0	0	0	7	7	0	7
Fund Totals:	\$0	\$0	\$0	\$0	\$0	\$7	\$7	\$0	\$7

Funding Source STP-TMA			Program Local Hwy - Transportation Alternatives				Local Match 7.34%		
Cost Year*	Preliminary Engineering	Preliminary Engineering Consulting	Right-of-Way	Utilities	Construction Engineering	Construction	Total	Federal Share	Local Share
2020	0		0		39	254	293	271	22
Fund Totals:	\$0	\$0	\$0	\$0	\$39	\$254	\$293	\$271	\$22

Capital Maintenance, Phase 3, Boise Area - FY2021

Key # : 20159

COMPASS PM:

Federal PM:

Requesting Agency: ACHD

Maintenance

Project Year: 2021

Total Previous Expenditures: \$91

Total Programmed Cost: \$300

Total Cost (Prev. + Prog.): \$391

Project Description : Support the local maintenance program for arterials and collectors within the Boise Urbanized Area.



Funding Source	Local Participating		Program				Hwy - Local Partnerships		Local Match 100.00%	
Cost Year*	Preliminary Engineering	Preliminary Engineering Consulting	Right-of-Way	Utilities	Construction Engineering	Construction	Total	Federal Share	Local Share	
2021	0	0	0	0	0	144	144	0	144	
Fund Totals:	\$0	\$0	\$0	\$0	\$0	\$144	\$144	\$0	\$144	

Funding Source		STP-TMA		Program		Local Hwy - Transportation Alternatives			Local Match 7.34%	
Cost Year*	Preliminary Engineering	Preliminary Engineering Consulting	Right-of-Way	Utilities	Construction Engineering	Construction	Total	Federal Share	Local Share	
2021	0	0	0	0	39	117	156	145	11	
Fund Totals:	\$0	\$0	\$0	\$0	\$39	\$117	\$156	\$145	\$11	

Centennial Way Roundabout, Caldwell

Key # : 13484

COMPASS PM:

Federal PM:

Requesting Agency: City of Caldwell

Freight Movement and Economic Vitality

Project Year: 2023

Transportation Safety

Total Previous Expenditures: \$422

Housing

Total Programmed Cost: \$2,936

Congestion Reduction/System Reliability

Total Cost (Prev. + Prog.): \$3,358

Community Infrastructure

Project Description : Replace a six-legged intersection at SH-19 (Simplot Boulevard) and I-84B (Centennial Way, Cleveland Boulevard and Blaine Street) with a roundabout intersection in the City of Caldwell.



Funding Source		STP-U	Program		Local Hwy - Urban			Local Match 7.34%	
Cost Year*	Preliminary Engineering	Preliminary Engineering Consulting	Right-of-Way	Utilities	Construction Engineering	Construction	Total	Federal Share	Local Share
2020	0	0	40	0	0	0	40	37	3
2023	0	0	0	0	462	2,434	2,896	2,683	213
Fund Totals:	\$0	\$0	\$40	\$0	\$462	\$2,434	\$2,936	\$2,720	\$216

Cherry Lane, 11th Avenue North to Idaho Center Boulevard, Nampa

Key # : ORN22438

COMPASS PM:

Federal PM:

Requesting Agency: City of Nampa

Project Year: PD

Total Previous Expenditures: \$0

Total Programmed Cost: \$1,302

Total Cost (Prev. + Prog.): \$1,302

Project Description : Rebuild Cherry Lane between 11th Avenue North and Idaho Center Boulevard in the City of Nampa.



Funding Source STP-U			Program Local Hwy - Urban				Local Match		
Cost Year*	Preliminary Engineering	Preliminary Engineering Consulting	Right-of-Way	Utilities	Construction Engineering	Construction	Total	Federal Share	Local Share
PD	43	128	0	0	185	946	1,302	1,302	0
Fund Totals:	\$43	\$128	\$0	\$0	\$185	\$946	\$1,302	\$1,302	\$0

Cherry Lane, Franklin Boulevard to 11th Avenue North, Rebuild, Nampa

Key # : 22017

COMPASS PM:

Federal PM:

Requesting Agency: City of Nampa

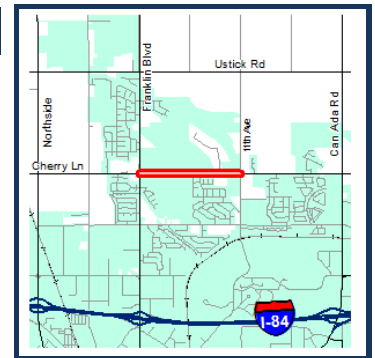
Project Year: PD

Total Previous Expenditures: \$0

Total Programmed Cost: \$1,352

Total Cost (Prev. + Prog.): \$1,352

Project Description : Rebuild Cherry Lane from 11th Avenue North to Franklin Boulevard in the City of Nampa.



Funding Source STP-U			Program Local Hwy - Urban				Local Match 7.34%		
Cost Year*	Preliminary Engineering	Preliminary Engineering Consulting	Right-of-Way	Utilities	Construction Engineering	Construction	Total	Federal Share	Local Share
2022	25	175	0	0	0	0	200	185	15
PD	0	0	0	0	317	835	1,152	1,067	85
Fund Totals:	\$25	\$175	\$0	\$0	\$317	\$835	\$1,352	\$1,253	\$99

*PD = Preliminary Development (projects with development activity but no programmed year of construction)

Cole Road, McGlochlin Street to Victory Road, Boise

Key # : IN205-97

Requesting Agency: ACHD

Project Year: 2020

Total Previous Expenditures:

Total Programmed Cost: \$5,235

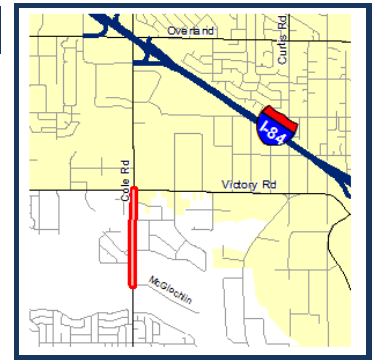
Total Cost (Prev. + Prog.): \$0

Project Description : Widen Cole Road from McGlochlin Street to Victory Road in the City of Boise. Project also includes intersection improvements at Cole Road and Victory Road to six lanes on Victory Road and seven lanes on Cole Road. Project includes widening of a bridge.

COMPASS PM:

Congestion Reduction/System Reliability
Housing
Transportation Safety
Community Infrastructure

Federal PM:



Funding Source		Local (Regionally Significant)		Program		Hwy - Local Partnerships		Local Match 100.00%	
Cost Year*	Preliminary Engineering	Preliminary Engineering Consulting	Right-of-Way	Utilities	Construction Engineering	Construction	Total	Federal Share	Local Share
2020	0	0	0	112	63	5,060	5,235	0	5,235
Fund Totals:	\$0	\$0	\$0	\$112	\$63	\$5,060	\$5,235	\$0	\$5,235

Colorado and Holly, Signal and Pedestrian Improvements, Nampa

Key # : 13486

Requesting Agency: City of Nampa

Project Year: 2020

Total Previous Expenditures: \$176

Total Programmed Cost: \$1,391

Total Cost (Prev. + Prog.): \$1,567

Project Description : Install traffic signals and pedestrian-friendly improvements at the intersection of Colorado Avenue and Holly Street in the City of Nampa.

COMPASS PM:

Transportation Safety
Congestion Reduction/System Reliability
Environmental Sustainability
Health
Community Infrastructure

Federal PM:



Funding Source		STP-U		Program		Local Hwy - Urban		Local Match 7.34%	
Cost Year*	Preliminary Engineering	Preliminary Engineering Consulting	Right-of-Way	Utilities	Construction Engineering	Construction	Total	Federal Share	Local Share
2020	0	0	0	0	217	1,114	1,331	1,233	98
Fund Totals:	\$0	\$0	\$0	\$0	\$217	\$1,114	\$1,331	\$1,233	\$98

Funding Source		Local Participating		Program		Hwy - Local Partnerships		Local Match 100.00%	
Cost Year*	Preliminary Engineering	Preliminary Engineering Consulting	Right-of-Way	Utilities	Construction Engineering	Construction	Total	Federal Share	Local Share
2020	0	0	0	60	0	0	60	0	60
Fund Totals:	\$0	\$0	\$0	\$60	\$0	\$0	\$60	\$0	\$60

Commuteride, ACHD

Key # : CPA3

COMPASS PM:

Federal PM:

Requesting Agency: ACHD

Support

Project Year: 2020-2025

Total Previous Expenditures:

Total Programmed Cost: \$1,650

Total Cost (Prev. + Prog.): \$0

Project Description : Continue and improve rideshare program and marketing. Operate a third-party vanpool program in multi-county area and coordinate vanpools in the Boise and Nampa Urbanized Areas. These projects tie to ITD key numbers.

ACHD **COMMUTERIDE**

Funding Source STP-U		Program Local Hwy - Urban						Local Match 0.00%	
Cost Year*	Preliminary Engineering	Preliminary Engineering Consulting	Right-of-Way	Utilities	Construction Engineering	Construction	Total	Federal Share	Local Share
2020	0	0	0	0	0	55	55	55	0
2021	0	0	0	0	0	55	55	55	0
2022	0	0	0	0	0	110	110	110	0
2024	0	0	0	0	0	55	55	55	0
2025	0	0	0	0	0	55	55	55	0
Fund Totals:	\$0	\$0	\$0	\$0	\$0	\$330	\$330	\$330	\$0

Funding Source STP-TMA		Program Local Hwy - Transportation Management Area						Local Match 0.00%	
Cost Year*	Preliminary Engineering	Preliminary Engineering Consulting	Right-of-Way	Utilities	Construction Engineering	Construction	Total	Federal Share	Local Share
2020	0	0	0	0	0	220	220	220	0
2021	0	0	0	0	0	220	220	220	0
2022	0	0	0	0	0	220	220	220	0
2023	0	0	0	0	0	220	220	220	0
2024	0	0	0	0	0	220	220	220	0
2025	0	0	0	0	0	220	220	220	0
Fund Totals:	\$0	\$0	\$0	\$0	\$0	\$1,320	\$1,320	\$1,320	\$0

Commuteride, Van Replacements, Canyon County - FY2019-2021

Key # : 20136a

COMPASS PM:

Federal PM:

Requesting Agency: ACHD

Transportation Infrastructure

Project Year: 2019-2021

Total Previous Expenditures: \$0

Total Programmed Cost: \$580

Total Cost (Prev. + Prog.): \$580

Project Description : Replace Commuteride vans in the Nampa Urbanized Area using funds for bus and bus facilities.



Funding Source FTA 5339 SU		Program Transit Capital						Local Match 20.00%	
Cost Year*	Preliminary Engineering	Preliminary Engineering Consulting	Right-of-Way	Utilities	Construction Engineering	Construction	Total	Federal Share	Local Share
2020	0	0	0	0	0	290	290	232	58
2021	0	0	0	0	0	290	290	232	58
Fund Totals:	\$0	\$0	\$0	\$0	\$0	\$580	\$580	\$464	\$116

*PD = Preliminary Development (projects with development activity but no programmed year of construction)

Sorted by Project Name
All Values in Thousands of Dollars

DRAFT

Page 16 of 69
Wednesday, May 15, 2019
1:13 PM

Cost Increase Set-Aside

Key # : 15001

COMPASS PM:

Federal PM:

Requesting Agency: COMPASS

Support

Project Year: 2020-2022

Total Previous Expenditures: \$0

Total Programmed Cost: \$32

Total Cost (Prev. + Prog.): \$32

Project Description : Set-aside for cost increases. Funds currently unprogrammed.



Funding Source STP-TMA			Program Local Hwy - Transportation Management Area					Local Match 7.34%	
Cost Year*	Preliminary Engineering	Preliminary Engineering Consulting	Right-of-Way	Utilities	Construction Engineering	Construction	Total	Federal Share	Local Share
2020	0	0	0	0	0	14	14	13	1
2021	0	0	0	0	0	6	6	6	0
2022	0	0	0	0	0	12	12	11	1
Fund Totals:	\$0	\$0	\$0	\$0	\$0	\$32	\$32	\$30	\$2

Eagle Road, Amity Road to Victory Road, Meridian

Key # : RD207-33

COMPASS PM:

Federal PM:

Requesting Agency: ACHD

Congestion Reduction/System Reliability

Project Year: 2020

Transportation Safety

Total Previous Expenditures:

Housing

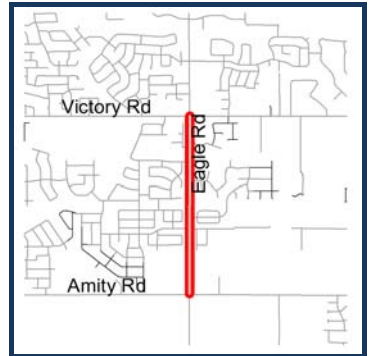
Total Programmed Cost: \$4,135

Community Infrastructure

Total Cost (Prev. + Prog.): \$0

Health

Project Description : Widen Eagle Road from Amity Road to Victory Road in the City of Meridian to five lanes with curb-gutter, sidewalk, and bike lanes to relieve traffic congestion and improve safety. Road segment includes a bridge structure, which may be replaced or widened ahead of the road project.



Funding Source Local (Regionally Significant)			Program Hwy - Local Partnerships					Local Match 100.00%	
Cost Year*	Preliminary Engineering	Preliminary Engineering Consulting	Right-of-Way	Utilities	Construction Engineering	Construction	Total	Federal Share	Local Share
2020	0	0	0	0	43	4,092	4,135	0	4,135
Fund Totals:	\$0	\$0	\$0	\$0	\$43	\$4,092	\$4,135	\$0	\$4,135

Eagle Road, Lake Hazel Road to Amity Road, Meridian

Key # : RD216-04

COMPASS PM:

Federal PM:

Requesting Agency: ACHD

Project Year: PD

Total Previous Expenditures: \$0

Total Programmed Cost: \$7,459

Total Cost (Prev. + Prog.): \$7,459

Project Description : Widen Eagle Road from Lake Hazel Road to Amity Road in the City of Meridian to five lanes with curb, gutter, sidewalk and a Level 3 bike facility.



Funding Source		Local (Regionally Significant)		Program Hwy - Local Partnerships			Local Match 100.00%		
Cost Year*	Preliminary Engineering	Preliminary Engineering Consulting	Right-of-Way	Utilities	Construction Engineering	Construction	Total	Federal Share	Local Share
2022	0	778	0	0	0	0	778	0	778
2023	0	0	1,288	0	0	0	1,288	0	1,288
PD	0	0	0	129	0	5,264	5,393	0	5,393
Fund Totals:	\$0	\$778	\$1,288	\$129	\$0	\$5,264	\$7,459	\$0	\$7,459

East Boise Point of Entry, Ada County

Key # : ORN22237

COMPASS PM:

Federal PM:

Requesting Agency: ITD

Project Year: 2020

Total Previous Expenditures: \$0

Total Programmed Cost: \$479

Total Cost (Prev. + Prog.): \$479

Project Description : Restore the pavement surface at the East Boise weigh station to extend the lifespan of the pavement. The project is located on I-84 between mileposts 10 and 11.



Funding Source		IM		Program State Highway - Safety			Local Match 100.00%		
Cost Year*	Preliminary Engineering	Preliminary Engineering Consulting	Right-of-Way	Utilities	Construction Engineering	Construction	Total	Federal Share	Local Share
2020	22	0	0	0	22	435	479	0	479
Fund Totals:	\$22	\$0	\$0	\$0	\$22	\$435	\$479	\$0	\$479

Franklin Boulevard and Karcher Road, Intersection Improvements, Nampa

Key # : 22102

Requesting Agency: City of Nampa

Project Year: 2022

Total Previous Expenditures: \$0

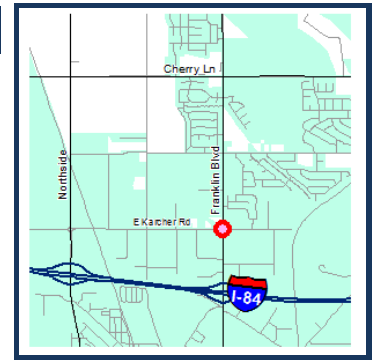
Total Programmed Cost: \$1,644

Total Cost (Prev. + Prog.): \$1,644

COMPASS PM:

Congestion Reduction/System Reliability
Transportation Safety
Community Infrastructure
Freight Movement and Economic Vitality

Federal PM:



Project Description : Construct a dual lane offset roundabout at Franklin Boulevard and Karcher Road in the City of Nampa. The project includes right-of-way, curb and gutter, sidewalk, lighting, pedestrian ramps, and lane widening. The design includes a roundabout with one entering lane eastbound and westbound, and two entering lanes northbound and southbound. The offset center of the roundabout is approximately 55 feet west and 10 feet north of the existing intersection. A power pole will be relocated on the northeast corner at project expense (power pole is in a private easement outside of the right-of-way).

Funding Source		Freight		Program		State Hwy - Freight		Local Match 7.34%	
Cost Year*	Preliminary Engineering	Preliminary Engineering Consulting	Right-of-Way	Utilities	Construction Engineering	Construction	Total	Federal Share	Local Share
2020	30	120	0	0	0	0	150	139	11
2022	0	0	0	0	0	1,494	1,494	1,384	110
Fund Totals:	\$30	\$120	\$0	\$0	\$0	\$1,494	\$1,644	\$1,523	\$121

Greenhurst Road, Sunnybrook Drive to Canyon Street, Nampa

Key # : 21999

Requesting Agency: City of Nampa

Project Year: 2021

Total Previous Expenditures: \$142

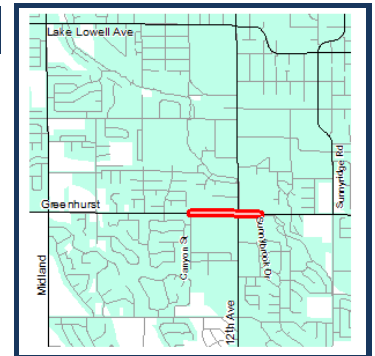
Total Programmed Cost: \$979

Total Cost (Prev. + Prog.): \$1,121

COMPASS PM:

Transportation Safety
Health
Environmental Sustainability
Community Infrastructure

Federal PM:



Project Description : Provide safety improvements on Greenhurst Road from Sunnybrook Road to Canyon Street in the City of Nampa. The project will install a traffic control signal with pedestrian crossing facilities, a pedestrian-activated flashing beacon crossing light, street lighting, and a raised median to reduce or eliminate fatal and serious injury accidents for roadway users.

Funding Source		HSIP (Local)		Program		Local Hwy - HSIP		Local Match 7.34%	
Cost Year*	Preliminary Engineering	Preliminary Engineering Consulting	Right-of-Way	Utilities	Construction Engineering	Construction	Total	Federal Share	Local Share
2021	0	0	0	0	165	814	979	907	72
Fund Totals:	\$0	\$0	\$0	\$0	\$165	\$814	\$979	\$907	\$72

Highway 30, SH-44 to Sand Hollow, Canyon County

Key # : 19951

COMPASS PM:

Federal PM:

Requesting Agency: Canyon Highway District

Maintenance

Project Year: PD

Farmland

Total Previous Expenditures: \$324

Total Programmed Cost: \$2,110

Total Cost (Prev. + Prog.): \$2,434

Project Description : Rehabilitate Old Highway 30 from SH-44 to Galloway Road and Goodson Road to south of Sand Hollow Road. Work also includes improvements to the intersections at Farmway Road and Goodson Road.



Funding Source STP-R			Program Local Hwy - Rural					Local Match 7.34%	
Cost Year*	Preliminary Engineering	Preliminary Engineering Consulting	Right-of-Way	Utilities	Construction Engineering	Construction	Total	Federal Share	Local Share
PD	0	0	0	0	487	1,623	2,110	1,955	155
Fund Totals:	\$0	\$0	\$0	\$0	\$487	\$1,623	\$2,110	\$1,955	\$155

Holly Street/Northwest Nazarene University Roadway Reconfiguration, Nampa

Key # : 22132

COMPASS PM:

Federal PM:

Requesting Agency: City of Nampa

Transportation Safety

Project Year: PD

Land Use

Total Previous Expenditures: \$0

Health

Total Programmed Cost: \$771

Congestion Reduction/System Reliability

Total Cost (Prev. + Prog.): \$771

Environmental Sustainability

Project Description : Reconfigure the four-lane Holly Street roadway section (Roosevelt Avenue to Colorado Avenue) to a three-lane section and add bicycle lanes to improve vehicle, bicycle, and pedestrian transportation safety issues along the Holly Street corridor adjacent to Northwest Nazarene University (NNU) in the City of Nampa. The project will also extend bicycle lanes from Roosevelt Avenue to Hawaii Avenue to the south, connecting existing bicycle lane facilities to the area.



Funding Source STP-U			Program Local Hwy - Urban					Local Match 7.34%	
Cost Year*	Preliminary Engineering	Preliminary Engineering Consulting	Right-of-Way	Utilities	Construction Engineering	Construction	Total	Federal Share	Local Share
2022	21	43	0	0	0	0	64	59	5
PD	0	0	0	0	67	275	342	317	25
Fund Totals:	\$21	\$43	\$0	\$0	\$67	\$275	\$406	\$376	\$30

Funding Source Local Participating			Program Hwy - Local Partnerships					Local Match 100.00%	
Cost Year*	Preliminary Engineering	Preliminary Engineering Consulting	Right-of-Way	Utilities	Construction Engineering	Construction	Total	Federal Share	Local Share
2022	0	37	0	0	0	0	37	0	37
PD	0	0	0	0	53	275	328	0	328
Fund Totals:	\$0	\$37	\$0	\$0	\$53	\$275	\$365	\$0	\$365

I-84, Broadway Avenue to Eisenman Road, Seal Coat, Boise

Key # : 20738

Requesting Agency: ITD

Project Year: 2021

Total Previous Expenditures: \$10

Total Programmed Cost: \$1,950

Total Cost (Prev. + Prog.): \$1,960

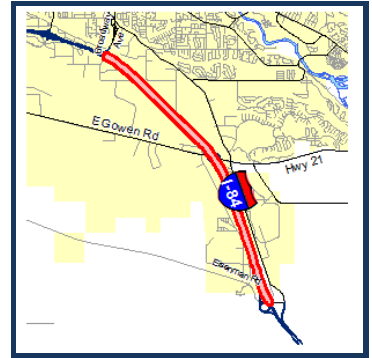
Project Description : Seal coat the pavement surface on I-84 between Broadway Avenue and Eisenman Road in the City of Boise to improve ride quality and extend the life of the pavement.

COMPASS PM:

Maintenance

Farmland

Federal PM:



Funding Source IM		Program State Hwy - Pavement Preservation						Local Match 7.73%	
Cost Year*	Preliminary Engineering	Preliminary Engineering Consulting	Right-of-Way	Utilities	Construction Engineering	Construction	Total	Federal Share	Local Share
2020	40	0	0	0	0	0	40	37	3
2021	0	0	0	0	127	1,783	1,910	1,762	148
Fund Totals:	\$40	\$0	\$0	\$0	\$127	\$1,783	\$1,950	\$1,799	\$151

I-84, Eisenman Interchange to Mt. Home Interchange, Ada and Elmore

Key # : 20203

Requesting Agency: ITD

Project Year: 2020

Total Previous Expenditures: \$26

Total Programmed Cost: \$2,185

Total Cost (Prev. + Prog.): \$2,211

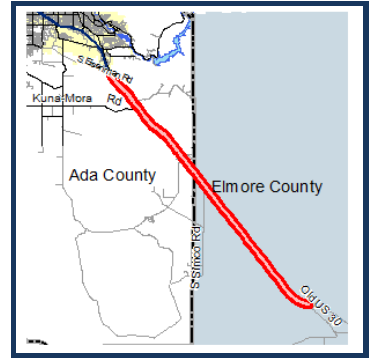
Project Description : Seal coat the pavement surface on I-84 between the Eisenman Interchange (milepost 60) in Ada County to the Mountain Home Interchange (milepost 90) in Elmore County to improve ride quality and extend the life of the pavement. (55% Ada County and 45% Elmore County)

COMPASS PM:

Maintenance

Farmland

Federal PM:



Funding Source IM		Program State Hwy - Pavement Preservation						Local Match 7.73%	
Cost Year*	Preliminary Engineering	Preliminary Engineering Consulting	Right-of-Way	Utilities	Construction Engineering	Construction	Total	Federal Share	Local Share
2020	0	0	0	0	104	2,081	2,185	2,016	169
Fund Totals:	\$0	\$0	\$0	\$0	\$104	\$2,081	\$2,185	\$2,016	\$169

I-84, Franklin Interchange to Karcher Interchange, Canyon County

Key # : 22196

COMPASS PM:

Federal PM:

Requesting Agency: ITD

Project Year: 2020-2021

Total Previous Expenditures: \$11,200

Total Programmed Cost: \$158,497

Total Cost (Prev. + Prog.): \$169,697

Project Description : Design and construction on I-84 from the Franklin Interchange in the City of Caldwell to the Karcher Interchange in the City of Nampa in Canyon County. Construction will be split out once the phasing is determined.



Funding Source		State	Program Hwy GARVEE - 2017 Legislative Authorization						Local Match 100.00%	
Cost Year*	Preliminary Engineering	Preliminary Engineering Consulting	Right-of-Way	Utilities	Construction Engineering	Construction	Total		Federal Share	Local Share
2020	0	0	0	0	6,800	73,000	79,800		0	79,800
2021	0	0	0	0	6,697	72,000	78,697		0	78,697
Fund Totals:	\$0	\$0	\$0	\$0	\$13,497	\$145,000	\$158,497		\$0	\$158,497

I-84, Garrity Interchange to Ten Mile Interchange, Canyon and Ada Counties

Key # : 20212

COMPASS PM:

Federal PM:

Requesting Agency: ITD

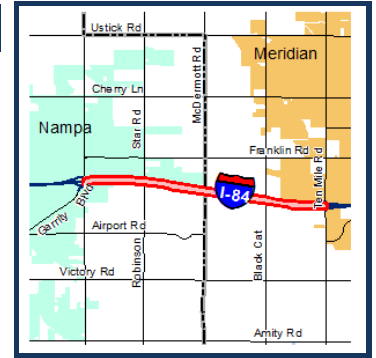
Project Year: 2021

Total Previous Expenditures: \$151

Total Programmed Cost: \$4,386

Total Cost (Prev. + Prog.): \$4,537

Project Description : Resurface the pavement on I-84 between the Garrity Interchange in the City of Nampa and the Ten Mile Interchange in the City of Meridian. This is a routine procedure to maintain the existing pavement.



Funding Source		IM	Program State Hwy - Pavement Preservation						Local Match 7.73%	
Cost Year*	Preliminary Engineering	Preliminary Engineering Consulting	Right-of-Way	Utilities	Construction Engineering	Construction	Total		Federal Share	Local Share
2021	0	0	0	0	229	4,157	4,386		4,047	339
Fund Totals:	\$0	\$0	\$0	\$0	\$229	\$4,157	\$4,386		\$4,047	\$339

I-84, Interchange Ramp Rehabilitation, Boise

Key #: ORN22246

COMPASS PM:

Federal PM:

Requesting Agency: ITD

Project Year: 2020

Total Previous Expenditures: \$0

Total Programmed Cost: \$661

Total Cost (Prev. + Prog.): \$661

Project Description : Mill and Inlay pavement on interchange ramps in the Boise area to preserve the pavement.



Funding Source IM		Program State Hwy - Pavement Preservation						Local Match	
Cost Year*	Preliminary Engineering	Preliminary Engineering Consulting	Right-of-Way	Utilities	Construction Engineering	Construction	Total	Federal Share	Local Share
2020	53	0	0	0	79	529	661	661	0
Fund Totals:	\$53	\$0	\$0	\$0	\$79	\$529	\$661	\$661	\$0

I-84, Middleton Road and Ustick Road Overpasses, Canyon County

Key #: 22154

COMPASS PM:

Federal PM:

Requesting Agency: ITD

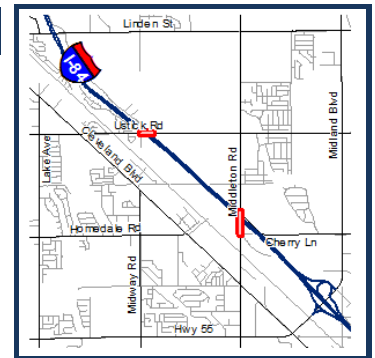
Project Year: 2020

Total Previous Expenditures: \$3,100

Total Programmed Cost: \$14,700

Total Cost (Prev. + Prog.): \$17,800

Project Description : Rebuild Middleton Road and Ustick Road overpasses at I-84 in Canyon County. This project is part of the GARVEE project to expand I-84 from the City of Nampa to the City of Caldwell (Key Number 20351).



Funding Source State		Program State Hwy - Restoration						Local Match 100.00%	
Cost Year*	Preliminary Engineering	Preliminary Engineering Consulting	Right-of-Way	Utilities	Construction Engineering	Construction	Total	Federal Share	Local Share
2020	0	500	0	0	0	0	500	0	500
Fund Totals:	\$0	\$500	\$0	\$0	\$0	\$0	\$500	\$0	\$500

Funding Source State		Program Hwy GARVEE - 2017 Legislative Authorization						Local Match 100.00%	
Cost Year*	Preliminary Engineering	Preliminary Engineering Consulting	Right-of-Way	Utilities	Construction Engineering	Construction	Total	Federal Share	Local Share
2020	0	0	0	0	1,200	13,000	14,200	0	14,200
Fund Totals:	\$0	\$0	\$0	\$0	\$1,200	\$13,000	\$14,200	\$0	\$14,200

I-84, Sand Hollow Interchange to Farmers Sebree Canal, Seal Coat, Canyon

Key # : 20060

Requesting Agency: ITD

Project Year: 2021

Total Previous Expenditures: \$16

Total Programmed Cost: \$1,400

Total Cost (Prev. + Prog.): \$1,416

Project Description : Seal coat the pavement surface on I-84 from the Canyon County border to Farmers Sebree Canal (near the Parma exit). The project will improve ride quality and extend the life of the pavement.

COMPASS PM:

Maintenance
Farmland

Federal PM:



Funding Source IM		Program State Hwy - Pavement Preservation						Local Match 7.73%	
Cost Year*	Preliminary Engineering	Preliminary Engineering Consulting	Right-of-Way	Utilities	Construction Engineering	Construction	Total	Federal Share	Local Share
2021	0	0	0	0	100	1,300	1,400	1,292	108
Fund Totals:	\$0	\$0	\$0	\$0	\$100	\$1,300	\$1,400	\$1,292	\$108

ITS, Advanced Signalization, Ada County, ACHD

Key # : 22100

Requesting Agency: ACHD

Project Year: 2020

Total Previous Expenditures: \$140

Total Programmed Cost: \$1,678

Total Cost (Prev. + Prog.): \$1,818

Project Description : Improve the traffic signal operations at 50 signalized intersections using advanced technology on State Street, Chinden Boulevard, Franklin Road, and Fairview Avenue within Ada County (ITS = Intelligent Transportation Systems).

COMPASS PM:

Freight Movement and Economic Vitality
Transportation Safety
Environmental Sustainability
Community Infrastructure

Federal PM:



Funding Source Freight		Program State Hwy - Freight						Local Match 7.34%	
Cost Year*	Preliminary Engineering	Preliminary Engineering Consulting	Right-of-Way	Utilities	Construction Engineering	Construction	Total	Federal Share	Local Share
2020	0	0	0	0	0	1,431	1,431	1,326	105
Fund Totals:	\$0	\$0	\$0	\$0	\$0	\$1,431	\$1,431	\$1,326	\$105

Funding Source Local Participating		Program Hwy - Local Partnerships						Local Match 100.00%	
Cost Year*	Preliminary Engineering	Preliminary Engineering Consulting	Right-of-Way	Utilities	Construction Engineering	Construction	Total	Federal Share	Local Share
2020	0	0	0	0	0	247	247	0	247
Fund Totals:	\$0	\$0	\$0	\$0	\$0	\$247	\$247	\$0	\$247

Lake Hazel Road, Cloverdale Road to Five Mile Road, Ada County

Key # : RD207-29

COMPASS PM:

Federal PM:

Requesting Agency: ACHD

Project Year: PD

Total Previous Expenditures: \$0

Total Programmed Cost: \$8,080

Total Cost (Prev. + Prog.): \$8,080

Project Description : Widen Lake Hazel Road from Cloverdale Road to Five Mile Road in Ada County to five lanes with curb, gutter, and ten-foot multi-use pathways.



Funding Source		Local (Regionally Significant)		Program			Hwy - Local Partnerships		Local Match 100.00%	
Cost Year*	Preliminary Engineering	Preliminary Engineering Consulting	Right-of-Way	Utilities	Construction Engineering	Construction	Total	Federal Share	Local Share	
2023	0	896	0	0	0	0	896	0	896	
PD	0	0	722	194	299	5,969	7,184	0	7,184	
Fund Totals:	\$0	\$896	\$722	\$194	\$299	\$5,969	\$8,080	\$0	\$8,080	

Lake Hazel Road, Five Mile Road to Maple Grove Road, Ada County

Key # : RD207-30

COMPASS PM:

Federal PM:

Requesting Agency: ACHD

Project Year: PD

Total Previous Expenditures: \$0

Total Programmed Cost: \$4,649

Total Cost (Prev. + Prog.): \$4,649

Project Description : Widen Lake Hazel Road from Five Mile Road to Maple Grove Road in Ada County to five lanes with curb, gutter, and ten-foot multi-use pathways.



Funding Source		Local (Regionally Significant)		Program			Hwy - Local Partnerships			Local Match 100.00%	
Cost Year*	Preliminary Engineering	Preliminary Engineering Consulting	Right-of-Way	Utilities	Construction Engineering	Construction	Total	Federal Share	Local Share		
PD	0	618	246	60	62	3,663	4,649	0	4,649		
Fund Totals:	\$0	\$618	\$246	\$60	\$62	\$3,663	\$4,649	\$0	\$4,649		

Linder Road and Deer Flat Road Intersection, Kuna

Key # : 13492

Requesting Agency: ACHD

Project Year: 2020

Total Previous Expenditures: \$1,173

Total Programmed Cost: \$3,340

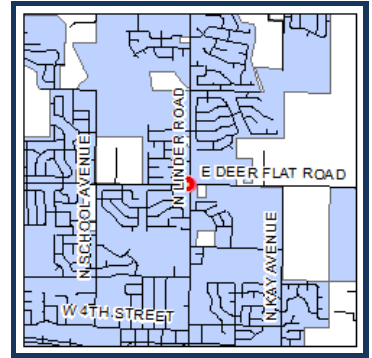
Total Cost (Prev. + Prog.): \$4,513

Project Description : Improve the intersection at Linder Road and Deer Flat Road in the City of Kuna, including the addition of curb, gutter, sidewalk, and bike lanes.

COMPASS PM:

Housing
Community Infrastructure
Transportation Safety
Health
Farmland

Federal PM:



Funding Source STP-U		Program Local Hwy - Urban						Local Match 7.34%	
Cost Year*	Preliminary Engineering	Preliminary Engineering Consulting	Right-of-Way	Utilities	Construction Engineering	Construction	Total	Federal Share	Local Share
2020	0	0	0	0	481	2,859	3,340	3,095	245
Fund Totals:	\$0	\$0	\$0	\$0	\$481	\$2,859	\$3,340	\$3,095	\$245

Linder Road, Franklin Road to Pine Avenue, Meridian

Key # : RD213-16

Requesting Agency: ACHD

Project Year: 2020

Total Previous Expenditures: \$0

Total Programmed Cost: \$1,511

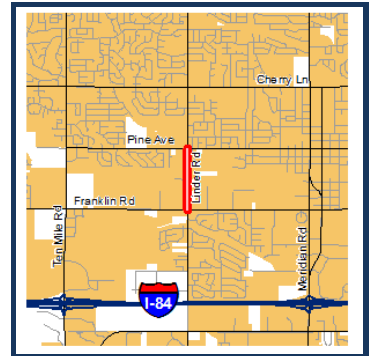
Total Cost (Prev. + Prog.): \$1,511

Project Description : Widen Linder Road between Franklin Road and Pine Avenue in the City of Meridian to five lanes, including curb, gutter, sidewalk, and bike lanes. Project includes upgrade of the railroad crossing and replacement and widening of a bridge structure.

COMPASS PM:

Housing
Transportation Safety
Congestion Reduction/System Reliability
Community Infrastructure
Health

Federal PM:



Funding Source Local (Regionally Significant)		Program Hwy - Local Partnerships						Local Match 100.00%	
Cost Year*	Preliminary Engineering	Preliminary Engineering Consulting	Right-of-Way	Utilities	Construction Engineering	Construction	Total	Federal Share	Local Share
2020	0	0	0	0	25	1,486	1,511	0	1,511
Fund Totals:	\$0	\$0	\$0	\$0	\$25	\$1,486	\$1,511	\$0	\$1,511

Linder Road, SH-44 (State Street) to Floating Feather Road, Eagle

Key # : RD209-28

Requesting Agency: ACHD

Project Year: 2021

Total Previous Expenditures: \$0

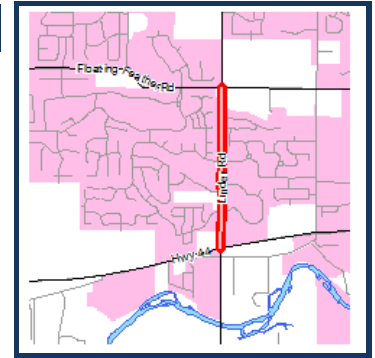
Total Programmed Cost: \$5,630

Total Cost (Prev. + Prog.): \$5,630

COMPASS PM:

Community Infrastructure
Housing
Congestion Reduction/System Reliability
Transportation Safety
Health

Federal PM:



Project Description : Widen Linder Road from SH-44 (State Street) to Floating Feather Road in the City of Eagle to five lanes with curb, gutter, sidewalk, and bike lanes. Project includes construction of a multi-lane roundabout at Linder Road and Floating Feather Road (IN 217-03), two bridges, and an enhanced pedestrian crossing (pedestrian hybrid beacon) at Linder Road and Saguaro Drive.

Funding Source Local (Regionally Significant) Program Hwy - Non-Participating								Local Match 100.00%	
Cost Year*	Preliminary Engineering	Preliminary Engineering Consulting	Right-of-Way	Utilities	Construction Engineering	Construction	Total	Federal Share	Local Share
2020	0	0	900	5	0	0	905	0	905
2021	0	0	0	0	0	4,725	4,725	0	4,725
Fund Totals:	\$0	\$0	\$900	\$5	\$0	\$4,725	\$5,630	\$0	\$5,630

Linder Road, Ustick Road to McMillan Road, Meridian

Key # : RD202-18

Requesting Agency: ACHD

Project Year: 2021

Total Previous Expenditures: \$0

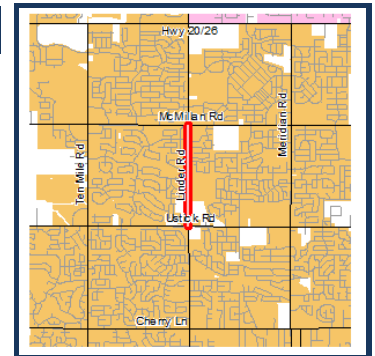
Total Programmed Cost: \$2,959

Total Cost (Prev. + Prog.): \$2,959

COMPASS PM:

Congestion Reduction/System Reliability
Housing
Transportation Safety
Community Infrastructure
Health

Federal PM:



Project Description : Widen Linder Road from Ustick Road to McMillan Road in the City of Meridian to five lanes with curb, gutter, sidewalk, and bike lanes.

Funding Source Local (Regionally Significant) Program Hwy - Local Partnerships								Local Match 100.00%	
Cost Year*	Preliminary Engineering	Preliminary Engineering Consulting	Right-of-Way	Utilities	Construction Engineering	Construction	Total	Federal Share	Local Share
2021	0	0	0	0	46	2,913	2,959	0	2,959
Fund Totals:	\$0	\$0	\$0	\$0	\$46	\$2,913	\$2,959	\$0	\$2,959

*PD = Preliminary Development (projects with development activity but no programmed year of construction)

Lone Star Road and Middleton Road, Intersection Improvements, Nampa

Key # : 20613

Requesting Agency: City of Nampa

Project Year: 2020

Total Previous Expenditures: \$230

Total Programmed Cost: \$1,285

Total Cost (Prev. + Prog.): \$1,515

Project Description : Install a traffic signal and sidewalk at the intersection of Lone Star Road and Middleton Road in the City of Nampa.

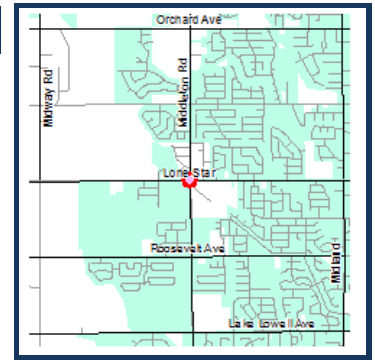
COMPASS PM:

Environmental Sustainability

Community Infrastructure

Transportation Safety

Federal PM:



Funding Source		HSIP (Local)		Program		Local Hwy - HSIP		Local Match 7.34%	
Cost Year*	Preliminary Engineering	Preliminary Engineering Consulting	Right-of-Way	Utilities	Construction Engineering	Construction	Total	Federal Share	Local Share
2020	0	0	0	0	216	1,069	1,285	1,191	94
Fund Totals:	\$0	\$0	\$0	\$0	\$216	\$1,069	\$1,285	\$1,191	\$94

*PD = Preliminary Development (projects with development activity but no programmed year of construction)

Main Street, Avenue A to Avenue C, Kuna

Key # : 20143

Requesting Agency: City of Kuna

Project Year: 2020-2021

Total Previous Expenditures: \$141

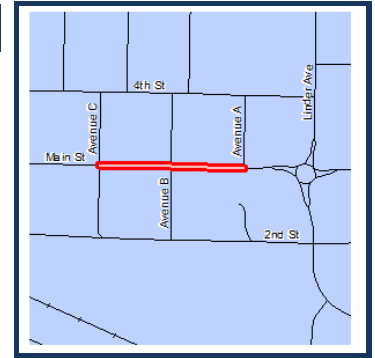
Total Programmed Cost: \$2,454

Total Cost (Prev. + Prog.): \$2,595

COMPASS PM:

Land Use
Transportation Safety
Environmental Sustainability
Health
Community Infrastructure

Federal PM:



Project Description : Extend streetscape improvements along Main Street from Avenue C to Avenue A in the City of Kuna. Improvements include roadway resurfacing, crosswalks, bulb-outs (pedestrian refuges) at the intersections, landscaping, decorative and functional lighting, benches, and bike racks.

Funding Source CDBG			Program Hwy - Local Partnerships					Local Match 100.00%	
Cost Year*	Preliminary Engineering	Preliminary Engineering Consulting	Right-of-Way	Utilities	Construction Engineering	Construction	Total	Federal Share	Local Share
2020	0	0	0	0	0	500	500	0	500
Fund Totals:	\$0	\$0	\$0	\$0	\$0	\$500	\$500	\$0	\$500

Funding Source TAP-TMA			Program Local Hwy - Transportation Alternatives					Local Match 7.34%	
Cost Year*	Preliminary Engineering	Preliminary Engineering Consulting	Right-of-Way	Utilities	Construction Engineering	Construction	Total	Federal Share	Local Share
2020	0	0	0	0	76	242	318	295	23
2021	0	0	0	0	0	78	78	72	6
Fund Totals:	\$0	\$0	\$0	\$0	\$76	\$320	\$396	\$367	\$29

Funding Source Local Participating			Program Hwy - Local Partnerships					Local Match 100.00%	
Cost Year*	Preliminary Engineering	Preliminary Engineering Consulting	Right-of-Way	Utilities	Construction Engineering	Construction	Total	Federal Share	Local Share
2020	0	0	0	0	142	154	296	0	296
Fund Totals:	\$0	\$0	\$0	\$0	\$142	\$154	\$296	\$0	\$296

Funding Source TAP-Urban			Program Local Hwy - Transportation Alternatives					Local Match 11.20%	
Cost Year*	Preliminary Engineering	Preliminary Engineering Consulting	Right-of-Way	Utilities	Construction Engineering	Construction	Total	Federal Share	Local Share
2020	0	0	0	0	0	562	562	499	63
Fund Totals:	\$0	\$0	\$0	\$0	\$0	\$562	\$562	\$499	\$63

Funding Source STP-TMA			Program Local Hwy - Transportation Alternatives					Local Match 7.34%	
Cost Year*	Preliminary Engineering	Preliminary Engineering Consulting	Right-of-Way	Utilities	Construction Engineering	Construction	Total	Federal Share	Local Share
2020	0	0	0	0	0	700	700	649	51
Fund Totals:	\$0	\$0	\$0	\$0	\$0	\$700	\$700	\$649	\$51

Microseals, Ada and Canyon Counties

Key # : 20536

Requesting Agency: ITD

Project Year: 2022

Total Previous Expenditures: \$75

Total Programmed Cost: \$7,803

Total Cost (Prev. + Prog.): \$7,878

Project Description : Microseal approximately 48 miles of arterial roadways in Ada and Canyon Counties to seal asphalt and preserve the road surface. Roadway segments include US 20/26 (Front/Myrtle) from 13th Street to Broadway Avenue; US 20/26 (Broadway Avenue) from Front to the south side of the Boise River Bridge and Boise River Bridge to Rossi Street; US 20/26 from east of Smeed Parkway to I-84; SH-44 (Glenwood Street) north of Riverside Drive to SH-44 (State Street); and SH-44, SH-16 to Glenwood Street.

COMPASS PM:

Maintenance
Farmland

Federal PM:



Funding Source NHPP			Program State Hwy - Pavement Preservation					Local Match 7.34%	
Cost Year*	Preliminary Engineering	Preliminary Engineering Consulting	Right-of-Way	Utilities	Construction Engineering	Construction	Total	Federal Share	Local Share
2022	0	0	0	0	520	7,283	7,803	7,230	573
Fund Totals:	\$0	\$0	\$0	\$0	\$520	\$7,283	\$7,803	\$7,230	\$573

Middleton Road and Cornell Street, Intersection Improvements, Middleton

Key # : 20430

Requesting Agency: City of Middleton

Project Year: 2021

Total Previous Expenditures: \$0

Total Programmed Cost: \$303

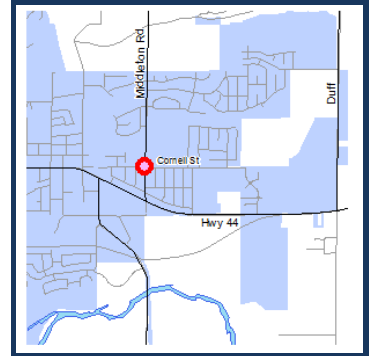
Total Cost (Prev. + Prog.): \$303

Project Description : Convert the intersection of Middleton Road and Cornell Street in the City of Middleton to a "mini-roundabout" to improve safety.

COMPASS PM:

Transportation Safety
Environmental Sustainability
Community Infrastructure
Farmland

Federal PM:



Funding Source HSIP (Local)			Program Local Hwy - HSIP					Local Match 7.34%	
Cost Year*	Preliminary Engineering	Preliminary Engineering Consulting	Right-of-Way	Utilities	Construction Engineering	Construction	Total	Federal Share	Local Share
2020	12	40	0	0	0	0	52	48	4
2021	0	0	0	0	44	207	251	233	18
Fund Totals:	\$12	\$40	\$0	\$0	\$44	\$207	\$303	\$281	\$22

Middleton Road and Ustick Road, Roundabout, Caldwell

Key # : 13487

COMPASS PM:

Federal PM:

Requesting Agency: City of Caldwell

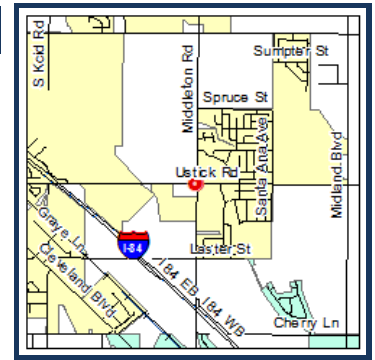
Project Year: 2024

Total Previous Expenditures: \$317

Total Programmed Cost: \$2,605

Total Cost (Prev. + Prog.): \$2,922

Project Description : Construct a roundabout to help traffic flow and congestion at the Middleton Road and Ustick Road intersection in the City of Caldwell.



Funding Source STP-U		Program Local Hwy - Urban						Local Match 7.34%	
Cost Year*	Preliminary Engineering	Preliminary Engineering Consulting	Right-of-Way	Utilities	Construction Engineering	Construction	Total	Federal Share	Local Share
2021	0	0	560	11	0	0	571	529	42
2024	0		0		332	1,702	2,034	1,885	149
Fund Totals:	\$0	\$0	\$560	\$11	\$332	\$1,702	\$2,605	\$2,414	\$191

Midway Road, SH-55 (Karcher Road) to I-84B, Rehabilitation, Canyon County

Key # : 22016

COMPASS PM:

Federal PM:

Requesting Agency: Canyon Highway District
City of Caldwell

Maintenance
Farmland

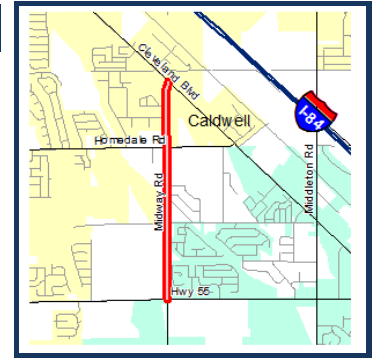
Project Year: PD

Total Previous Expenditures: \$0

Total Programmed Cost: \$1,317

Total Cost (Prev. + Prog.): \$1,317

Project Description : Rehabilitate pavement and construct shared-use shoulders on Midway Road between SH-55 (Karcher Road) and I-84B (Caldwell Boulevard) in Canyon County.



Funding Source STP-U		Program Local Hwy - Urban						Local Match 7.34%	
Cost Year*	Preliminary Engineering	Preliminary Engineering Consulting	Right-of-Way	Utilities	Construction Engineering	Construction	Total	Federal Share	Local Share
PD	0	0	0	0	274	873	1,147	1,063	84
Fund Totals:	\$0	\$0	\$0	\$0	\$274	\$873	\$1,147	\$1,063	\$84

Funding Source Local Participating		Program Hwy - Local Partnerships						Local Match 100.00%	
Cost Year*	Preliminary Engineering	Preliminary Engineering Consulting	Right-of-Way	Utilities	Construction Engineering	Construction	Total	Federal Share	Local Share
2022	39	131	0	0	0	0	170	0	170
Fund Totals:	\$39	\$131	\$0	\$0	\$0	\$0	\$170	\$0	\$170

Old Highway 30, Plymouth Street Bridge, Caldwell

Key # : 13494

Requesting Agency: Canyon Highway District
City of Caldwell

Project Year: 2023

Total Previous Expenditures: \$2,171

Total Programmed Cost: \$8,529

Total Cost (Prev. + Prog.): \$10,700

Project Description : Replace the Plymouth Street Bridge in the City of Caldwell with a new two-lane structure, leaving the existing bridge in place for use as a bicycle and pedestrian bridge.

COMPASS PM:

Transportation Infrastructure
Open Space
Congestion Reduction/System Reliability
Environmental Sustainability
Community Infrastructure

Federal PM:



Funding Source STP-U			Program Local Hwy - Urban				Local Match 7.34%		
Cost Year*	Preliminary Engineering	Preliminary Engineering Consulting	Right-of-Way	Utilities	Construction Engineering	Construction	Total	Federal Share	Local Share
2021	0	0	171	0	0	0	171	158	13
2023	0	0	0	0	301	1,539	1,840	1,705	135
Fund Totals:	\$0	\$0	\$171	\$0	\$301	\$1,539	\$2,011	\$1,863	\$148

Funding Source Bridge (Local)			Program Local Hwy - Bridge				Local Match 7.34%		
Cost Year*	Preliminary Engineering	Preliminary Engineering Consulting	Right-of-Way	Utilities	Construction Engineering	Construction	Total	Federal Share	Local Share
2021	0	0	149	0	0	0	149	138	11
2023	0	0	0	0	830	5,539	6,369	5,902	467
Fund Totals:	\$0	\$0	\$149	\$0	\$830	\$5,539	\$6,518	\$6,040	\$478

Orchard Street, Gowen Road to I-84 On-Ramp, Boise

Key # : RD207-01

Requesting Agency: ACHD

Project Year: PD

Total Previous Expenditures: \$0

Total Programmed Cost: \$4,838

Total Cost (Prev. + Prog.): \$4,838

Project Description : Realign and widen Orchard Street from Gowen Road to I-84 in the City of Boise to five lanes with curb, gutter, sidewalk, and bike lanes. Project includes reconstruction of the Gowen Road intersection as a multi-lane roundabout. Final alignment will be determined by the Orchard Alignment Study.

COMPASS PM:

Congestion Reduction/System Reliability
Transportation Safety
Community Infrastructure
Environmental Sustainability

Federal PM:



Funding Source Local (Regionally Significant)			Program Hwy - Local Partnerships				Local Match 100.00%		
Cost Year*	Preliminary Engineering	Preliminary Engineering Consulting	Right-of-Way	Utilities	Construction Engineering	Construction	Total	Federal Share	Local Share
2020	0	0	840	0	0	0	840	0	840
PD	0	0	0	0	0	3,998	3,998	0	3,998
Fund Totals:	\$0	\$0	\$840	\$0	\$0	\$3,998	\$4,838	\$0	\$4,838

*PD = Preliminary Development (projects with development activity but no programmed year of construction)

Pathway, Fairview Avenue Greenbelt Ramp, Boise

Key # : 20639

COMPASS PM:

Federal PM:

Requesting Agency: City of Boise

Project Year: 2020

Total Previous Expenditures: \$54

Total Programmed Cost: \$161

Total Cost (Prev. + Prog.): \$215

Health
Open Space
Transportation Safety
Community Infrastructure
Environmental Sustainability



Project Description : Design and construct an Americans with Disabilities Act-compliant, concrete, multi-use pathway ramp connecting the south side of the Greenbelt to the existing bike lane on Fairview Avenue in the City of Boise. A small section of block retaining wall construction is anticipated.

Funding Source		TAP-TMA		Program		Local Hwy - Transportation Alternatives		Local Match 7.34%	
Cost Year*	Preliminary Engineering	Preliminary Engineering Consulting	Right-of-Way	Utilities	Construction Engineering	Construction	Total	Federal Share	Local Share
2020	4	0	0	0	31	117	152	141	11
Fund Totals:	\$4	\$0	\$0	\$0	\$31	\$117	\$152	\$141	\$11

Funding Source		Local Participating		Program		Hwy - Local Partnerships		Local Match 100.00%	
Cost Year*	Preliminary Engineering	Preliminary Engineering Consulting	Right-of-Way	Utilities	Construction Engineering	Construction	Total	Federal Share	Local Share
2020	0	0	0	0	0	9	9	0	9
Fund Totals:	\$0	\$0	\$0	\$0	\$0	\$9	\$9	\$0	\$9

Pathway, Greenbelt Completion, Boise State

Key # : ORN22385

COMPASS PM:

Federal PM:

Requesting Agency: Boise State University

Project Year: PD

Total Previous Expenditures: \$0

Total Programmed Cost: \$422

Total Cost (Prev. + Prog.): \$422

Project Description : Design and construct improvements to the Boise River Greenbelt along Cesar Chavez Road (south side of Boise River) between Theatre Lane and Broadway Avenue on the Boise State University campus. Improvements include widening the pathway from 8 feet to 12 feet and adding a well-defined landscaped buffer between the pathway and the street.



Funding Source		TAP-TMA		Program		Local Hwy - Transportation Alternatives		Local Match 7.34%	
Cost Year*	Preliminary Engineering	Preliminary Engineering Consulting	Right-of-Way	Utilities	Construction Engineering	Construction	Total	Federal Share	Local Share
2024	11	39	0	0	0	0	50	46	4
PD	0	0	0	0	38	334	372	345	27
Fund Totals:	\$11	\$39	\$0	\$0	\$38	\$334	\$422	\$391	\$31

Pathway, Grimes Pathway, Nampa

Key # : 22076

Requesting Agency: City of Nampa

Project Year: 2020

Total Previous Expenditures: \$0

Total Programmed Cost: \$264

Total Cost (Prev. + Prog.): \$264

Project Description : Add two sections to the Grimes City Pathway in the City of Nampa. A new southern section would extend northeast from Karcher Road, to between McDonagh Park and the railroad tracks. A new northern section would connect to an existing pathway in Sunset Oaks part, then extend north to Birch Lane.

COMPASS PM:

Community Infrastructure
Health
Open Space

Federal PM:



Funding Source		TAP-Urban		Program		Local Hwy - Transportation Alternatives		Local Match 7.34%	
Cost Year*	Preliminary Engineering	Preliminary Engineering Consulting	Right-of-Way	Utilities	Construction Engineering	Construction	Total	Federal Share	Local Share
2020	0	0	0	0	0	264	264	245	19
Fund Totals:	\$0	\$0	\$0	\$0	\$0	\$264	\$264	\$245	\$19

Pathway, Rail with Trail, Meridian

Key # : 13918

Requesting Agency: City of Meridian

Project Year: 2022

Total Previous Expenditures: \$75

Total Programmed Cost: \$638

Total Cost (Prev. + Prog.): \$713

Project Description : Construct a multi-use pathway in the City of Meridian parallel to the railroad tracks for approximately 1/2 mile west towards Linder Road from Meridian Road.

COMPASS PM:

Land Use
Environmental Sustainability
Open Space
Transportation Safety
Health

Federal PM:



Funding Source		TAP-TMA		Program		Local Hwy - Transportation Alternatives		Local Match 7.34%	
Cost Year*	Preliminary Engineering	Preliminary Engineering Consulting	Right-of-Way	Utilities	Construction Engineering	Construction	Total	Federal Share	Local Share
2022	0	0	0	0	46	336	382	354	28
Fund Totals:	\$0	\$0	\$0	\$0	\$46	\$336	\$382	\$354	\$28

Funding Source		Local Participating		Program		Hwy - Local Partnerships		Local Match 100.00%	
Cost Year*	Preliminary Engineering	Preliminary Engineering Consulting	Right-of-Way	Utilities	Construction Engineering	Construction	Total	Federal Share	Local Share
2021	0	0	120	0	0	0	120	0	120
2022	0	0	0	0	0	136	136	0	136
Fund Totals:	\$0	\$0	\$120	\$0	\$0	\$136	\$256	\$0	\$256

Pathway, Stoddard Pathway, Amity Avenue to Sherman Avenue, Nampa

Key # : 22070

Requesting Agency: City of Nampa

Project Year: 2021

Total Previous Expenditures: \$66

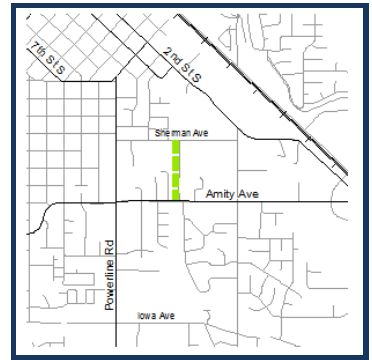
Total Programmed Cost: \$473

Total Cost (Prev. + Prog.): \$539

COMPASS PM:

Community Infrastructure
Health
Open Space
Environmental Sustainability
Congestion Reduction/System Reliability

Federal PM:



Project Description : Extend Stoddard Pathway from Amity Avenue to Sherman Avenue in southeast Nampa (Phase 2). The extension will provide a safe route to Sherman Elementary. Install a rapid flashing beacon at the Amity Avenue roadway crossing.

Funding Source		TAP-Urban		Program		Local Hwy - Transportation Alternatives		Local Match 7.34%	
Cost Year*	Preliminary Engineering	Preliminary Engineering Consulting	Right-of-Way	Utilities	Construction Engineering	Construction	Total	Federal Share	Local Share
2021	0	0	0	0	0	473	473	438	35
Fund Totals:	\$0	\$0	\$0	\$0	\$0	\$473	\$473	\$438	\$35

Pathway, Stoddard Pathway, Iowa Avenue to Amity Avenue, Nampa

Key # : 22050

Requesting Agency: City of Nampa

Project Year: 2020

Total Previous Expenditures: \$66

Total Programmed Cost: \$467

Total Cost (Prev. + Prog.): \$533

COMPASS PM:

Community Infrastructure
Health
Open Space
Environmental Sustainability
Congestion Reduction/System Reliability

Federal PM:



Project Description : Extend Stoddard Pathway .5 miles from Iowa Avenue to Amity Avenue in the City of Nampa (Phase 1).

Funding Source		TAP-Urban		Program		Local Hwy - Transportation Alternatives		Local Match 7.34%	
Cost Year*	Preliminary Engineering	Preliminary Engineering Consulting	Right-of-Way	Utilities	Construction Engineering	Construction	Total	Federal Share	Local Share
2020	0	0	0	0	0	467	467	433	34
Fund Totals:	\$0	\$0	\$0	\$0	\$0	\$467	\$467	\$433	\$34

Peckham Road Intersections, Canyon County

Key # : 22101

Requesting Agency: Golden Gate HD

Project Year: 2022

Total Previous Expenditures: \$0

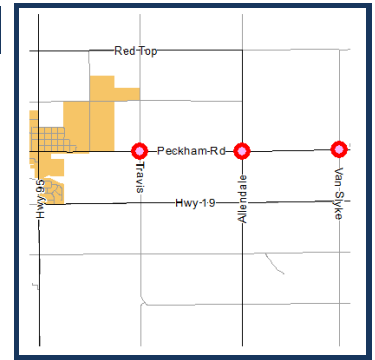
Total Programmed Cost: \$392

Total Cost (Prev. + Prog.): \$392

COMPASS PM:

Congestion Reduction/System Reliability
Farmland
Community Infrastructure
Freight Movement and Economic Vitality

Federal PM:



Project Description : Reconstruct three intersections on Peckham Road at Travis Road, Allendale Road, and Van Slyke Road between the Cities of Wilder and Greenleaf in Canyon County. Each intersection is substandard for truck turning movements. The reconstruction will provide larger turning radii to eliminate truck off-tracking and reduce edge breakup. The intersection improvements will also allow trucks to maintain their own travel lane while making turns. All construction will adhere to current Association of Canyon County Highway District (ACCHD) standards.

Funding Source		Freight	Program		State Hwy - Freight			Local Match 7.34%	
Cost Year*	Preliminary Engineering	Preliminary Engineering Consulting	Right-of-Way	Utilities	Construction Engineering	Construction	Total	Federal Share	Local Share
2020	5	30	0	0	0	0	35	32	3
2022	0	0	0	0	0	357	357	331	26
Fund Totals:	\$5	\$30	\$0	\$0	\$0	\$357	\$392	\$363	\$29

Peckham Road, US-95 to Notus Road, Canyon County

Key # : 13964

Requesting Agency: Golden Gate HD

Project Year: 2021

Total Previous Expenditures: \$625

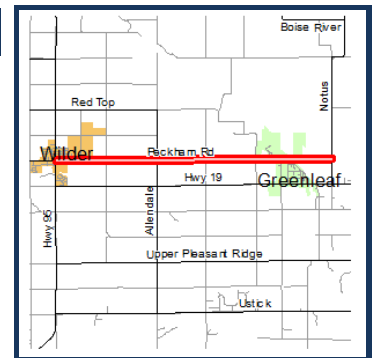
Total Programmed Cost: \$3,095

Total Cost (Prev. + Prog.): \$3,720

COMPASS PM:

Environmental Sustainability
Maintenance
Farmland
Transportation Safety
Health

Federal PM:



Project Description : Provide improvements on Peckham Road from US-95 in the City of Wilder to Notus Road in the City of Greenleaf in Canyon County, including roadway rehabilitation as well as curb, gutter, and sidewalk improvements within the city limits.

Funding Source		STP-R	Program		Local Hwy - Rural			Local Match 7.34%	
Cost Year*	Preliminary Engineering	Preliminary Engineering Consulting	Right-of-Way	Utilities	Construction Engineering	Construction	Total	Federal Share	Local Share
2021	0	0	0	0	695	2,400	3,095	2,868	227
Fund Totals:	\$0	\$0	\$0	\$0	\$695	\$2,400	\$3,095	\$2,868	\$227

*PD = Preliminary Development (projects with development activity but no programmed year of construction)

Pedestrian Improvements and Widening, Montana Avenue, Caldwell

Key # : 22018

Requesting Agency: City of Caldwell

Project Year: PD

Total Previous Expenditures: \$0

Total Programmed Cost: \$647

Total Cost (Prev. + Prog.): \$647

COMPASS PM:

Community Infrastructure

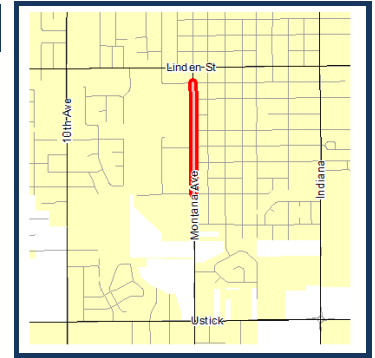
Health

Open Space

Transportation Safety

Environmental Sustainability

Federal PM:



Project Description : Construct sidewalk from Syringa Middle School to Spruce Street on the West side of Montana Avenue in the City of Caldwell. Project includes a pedestrian crossings and rectangular rapid flashing beacons at the Alder Street and the Spruce Street intersections across Montana Avenue.

Funding Source STP-U			Program Local Hwy - Urban				Local Match 7.34%		
Cost Year*	Preliminary Engineering	Preliminary Engineering Consulting	Right-of-Way	Utilities	Construction Engineering	Construction	Total	Federal Share	Local Share
2022	23	66	0	0	0	0	89	82	7
PD	0	0	0	0	90	468	558	517	41
Fund Totals:	\$23	\$66	\$0	\$0	\$90	\$468	\$647	\$600	\$47

*PD = Preliminary Development (projects with development activity but no programmed year of construction)

Pedestrian Improvements, SH-55 (Eagle Road), Franklin to Pine, Meridian

Key # : 20542

Requesting Agency: City of Meridian

Project Year: PD

Total Previous Expenditures: \$0

Total Programmed Cost: \$595

Total Cost (Prev. + Prog.): \$595

COMPASS PM:

Health

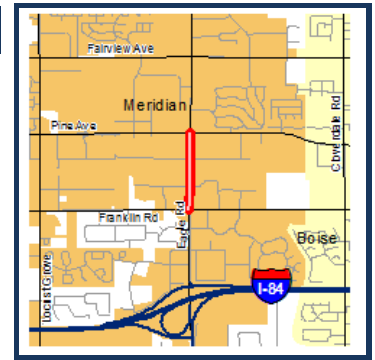
Congestion Reduction/System Reliability

Transportation Safety

Environmental Sustainability

Community Infrastructure

Federal PM:



Project Description : Construct a lighted 10-foot-wide concrete multi-use pathway along the east side of SH-55 (Eagle Road) from Franklin Road to Pine Avenue in the City of Meridian. Reconstruct the existing sidewalk adjacent to the Shell gas station to the 10-foot width. The project will include an 8-foot separation between the roadway and pathway where possible.

Funding Source TAP-TMA			Program Local Hwy - Transportation Alternatives					Local Match 7.34%	
Cost Year*	Preliminary Engineering	Preliminary Engineering Consulting	Right-of-Way	Utilities	Construction Engineering	Construction	Total	Federal Share	Local Share
2022	1	78	0	0	0	0	79	73	6
2023	0	0	96	0	0	0	96	89	7
PD	0	0	0	0	31	268	299	277	22
Fund Totals:	\$1	\$78	\$96	\$0	\$31	\$268	\$474	\$439	\$35

Funding Source Local Participating			Program Hwy - Local Partnerships					Local Match 100.00%	
Cost Year*	Preliminary Engineering	Preliminary Engineering Consulting	Right-of-Way	Utilities	Construction Engineering	Construction	Total	Federal Share	Local Share
2022	10	0	0	0	0	0	10	0	10
PD	0	0	0	0	0	9	9	0	9
Fund Totals:	\$10	\$0	\$0	\$0	\$0	\$9	\$19	\$0	\$19

Funding Source STP-TMA			Program Local Hwy - Transportation Management Area					Local Match 7.34%	
Cost Year*	Preliminary Engineering	Preliminary Engineering Consulting	Right-of-Way	Utilities	Construction Engineering	Construction	Total	Federal Share	Local Share
PD	0	0	0	0	0	102	102	95	7
Fund Totals:	\$0	\$0	\$0	\$0	\$0	\$102	\$102	\$95	\$7

*PD = Preliminary Development (projects with development activity but no programmed year of construction)

Sorted by Project Name
All Values in Thousands of Dollars

Page 38 of 69
Wednesday, May 15, 2019
1:13 PM

DRAFT

Pedestrian Improvements, US 20/26 (Chinden) at 43rd Street, Garden City

Key # : 20549

Requesting Agency: ACHD

Project Year: 2023

Total Previous Expenditures: \$0

Total Programmed Cost: \$215

Total Cost (Prev. + Prog.): \$215

Project Description : Install a pedestrian hybrid beacon controlled crossing on US 20/26 (Chinden Boulevard) at 43rd Street in the City of Garden City.

COMPASS PM:

Community Infrastructure
Transportation Safety
Environmental Sustainability

Federal PM:



Funding Source TAP-TMA			Program Local Hwy - Transportation Alternatives					Local Match 7.34%	
Cost Year*	Preliminary Engineering	Preliminary Engineering Consulting	Right-of-Way	Utilities	Construction Engineering	Construction	Total	Federal Share	Local Share
2021	8	48	0	0	0	0	56	52	4
2023	0	0	0	0	34	125	159	147	12
Fund Totals:	\$8	\$48	\$0	\$0	\$34	\$125	\$215	\$199	\$16

Planning and Mobility Implementation, VRT, Nampa Area

Key # : 18842

Requesting Agency: Valley Regional Transit

Project Year: 2020-PD

Total Previous Expenditures: \$0

Total Programmed Cost: \$2,268

Total Cost (Prev. + Prog.): \$2,268

Project Description : Provide program support administration, short-range transit planning and the implementation of a mobility management program in the Nampa Urbanized Area. See Valley Regional Transit's Program of Projects for more details.

COMPASS PM:

Support

Federal PM:



Funding Source FTA 5307 SU			Program Transit Capital					Local Match 20.00%	
Cost Year*	Preliminary Engineering	Preliminary Engineering Consulting	Right-of-Way	Utilities	Construction Engineering	Construction	Total	Federal Share	Local Share
2020	0	0	0	0	0	378	378	302	76
2021	0	0	0	0	0	378	378	302	76
2022	0	0	0	0	0	378	378	302	76
2023	0	0	0	0	0	378	378	302	76
2024	0	0	0	0	0	378	378	302	76
PD	0	0	0	0	0	378	378	302	76
Fund Totals:	\$0	\$0	\$0	\$0	\$0	\$2,268	\$2,268	\$1,814	\$454

*PD = Preliminary Development (projects with development activity but no programmed year of construction)

Planning and Mobility Management, VRT, Boise Area

Key # : 18854

COMPASS PM:

Federal PM:

Requesting Agency: Valley Regional Transit

Support

Project Year: 2020-PD

Total Previous Expenditures: \$0

Total Programmed Cost: \$6,048

Total Cost (Prev. + Prog.): \$6,048

Project Description : Provide program support administration, short-range transit planning, and the implementation of mobility management programs for Valley Regional Transit in the Boise Urbanized Area. See Valley Regional Transit's Program of Projects for more details.



Funding Source FTA 5307 LU			Program Transit Capital				Local Match 20.00%		
Cost Year*	Preliminary Engineering	Preliminary Engineering Consulting	Right-of-Way	Utilities	Construction Engineering	Construction	Total	Federal Share	Local Share
2020	0	0	0	0	0	1,008	1,008	806	202
2021	0	0	0	0	0	1,008	1,008	806	202
2022	0	0	0	0	0	1,008	1,008	806	202
2023	0	0	0	0	0	1,008	1,008	806	202
2024	0	0	0	0	0	1,008	1,008	806	202
PD	0	0	0	0	0	1,008	1,008	806	202
Fund Totals:	\$0	\$0	\$0	\$0	\$0	\$6,048	\$6,048	\$4,838	\$1,210

Planning, Communities in Motion Update, COMPASS

Key # : 19571

COMPASS PM:

Federal PM:

Requesting Agency: COMPASS

Support

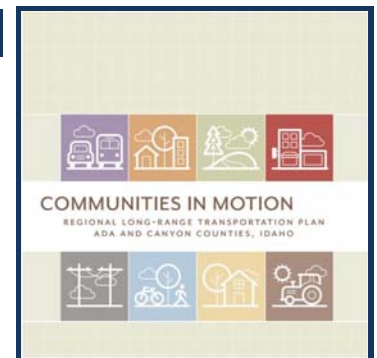
Project Year: 2019-2022

Total Previous Expenditures: \$50

Total Programmed Cost: \$212

Total Cost (Prev. + Prog.): \$262

Project Description : Update the regional long-range transportation plan. Includes: transportation/land use preference survey with focus groups, financial forecast assumptions review, growth scenario recalibration, public involvement, graphics and editing, and printing.



Funding Source STP-TMA			Program Local Hwy - Transportation Management Area				Local Match 7.34%		
Cost Year*	Preliminary Engineering	Preliminary Engineering Consulting	Right-of-Way	Utilities	Construction Engineering	Construction	Total	Federal Share	Local Share
2020	0	87	0	0	0	0	87	81	6
2021	0	53	0	0	0	0	53	49	4
2022	0	72	0	0	0	0	72	67	5
Fund Totals:	\$0	\$212	\$0	\$0	\$0	\$0	\$212	\$196	\$16

*PD = Preliminary Development (projects with development activity but no programmed year of construction)

Sorted by Project Name
All Values in Thousands of Dollars

DRAFT

Page 40 of 69
Wednesday, May 15, 2019
1:13 PM

Planning, Communities in Motion Update, COMPASS

Key # : 20271

COMPASS PM:

Federal PM:

Requesting Agency: COMPASS

Support

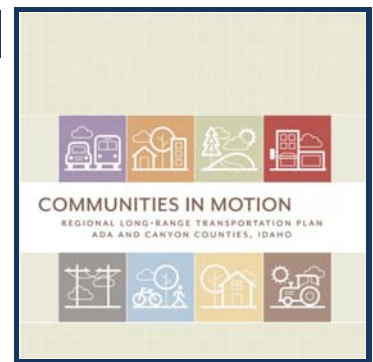
Project Year: 2023-PD

Total Previous Expenditures: \$0

Total Programmed Cost: \$340

Total Cost (Prev. + Prog.): \$340

Project Description : Update the regional long-range transportation plan. Includes Treasure Valley Transportation Operations, Management and ITS Plan Update; public involvement; graphics and editing; and printing.



Funding Source		STP-TMA	Program					Local Hwy - Transportation Management Area	Local Match 7.34%	
Cost Year*	Preliminary Engineering	Preliminary Engineering Consulting	Right-of-Way	Utilities	Construction Engineering	Construction	Total	Federal Share	Local Share	
2023	0	30	0	0	0	0	30	28	2	
2025	0	31	0	0	0	0	31	29	2	
PD	0	279	0	0	0	0	279	259	20	
Fund Totals:	\$0	\$340	\$0	\$0	\$0	\$0	\$340	\$315	\$25	

Planning, COMPASS

Key # : CPA1

COMPASS PM:

Federal PM:

Requesting Agency: COMPASS

Support

Project Year: 2020-PD

Total Previous Expenditures: \$0

Total Programmed Cost: \$1,986

Total Cost (Prev. + Prog.): \$1,986

Project Description : Assist COMPASS in meeting federal transportation planning responsibilities. These projects tie to ITD key numbers 13900, 19060, 19389, 19920, 20560, 21889, 19766, 20113.



Metropolitan Planning

Funding Source		STP-U	Program					Local Hwy - Urban	Local Match 7.34%	
Cost Year*	Preliminary Engineering	Preliminary Engineering Consulting	Right-of-Way	Utilities	Construction Engineering	Construction	Total	Federal Share	Local Share	
2020	0	99	0	0	0	0	99	92	7	
2021	0	99	0	0	0	0	99	92	7	
2022	0	198	0	0	0	0	198	183	15	
2024	0	99	0	0	0	0	99	92	7	
2025	0	99	0	0	0	0	99	92	7	
Fund Totals:	\$0	\$594	\$0	\$0	\$0	\$0	\$594	\$550	\$44	

Funding Source		STP-TMA	Program					Local Hwy - Transportation Management Area	Local Match 7.34%	
Cost Year*	Preliminary Engineering	Preliminary Engineering Consulting	Right-of-Way	Utilities	Construction Engineering	Construction	Total	Federal Share	Local Share	
2020	0	232	0	0	0	0	232	215	17	
2021	0	232	0	0	0	0	232	215	17	
2022	0	232	0	0	0	0	232	215	17	
2023	0	232	0	0	0	0	232	215	17	
2024	0	232	0	0	0	0	232	215	17	
2025	0	232	0	0	0	0	232	215	17	
Fund Totals:	\$0	\$1,392	\$0	\$0	\$0	\$0	\$1,392	\$1,290	\$102	

*PD = Preliminary Development (projects with development activity but no programmed year of construction)

Sorted by Project Name
All Values in Thousands of Dollars

Page 41 of 69
Wednesday, May 15, 2019
1:13 PM

DRAFT

Planning, High Capacity Corridor Alternatives Analysis, COMPASS

Key # : 13046

COMPASS PM:

Federal PM:

Requesting Agency: COMPASS

Support

Project Year: PD

Total Previous Expenditures: \$0

Total Programmed Cost: \$1,000

Total Cost (Prev. + Prog.): \$1,000

Project Description : Study to identify and analyze options to improve mobility in a priority corridor to be determined in the regional long-range transportation plan. The study will evaluate all reasonable public transportation alternatives.



Funding Source		STP-TMA	Program					Local Hwy - Transportation Management Area	Local Match 7.34%	
Cost Year*	Preliminary Engineering	Preliminary Engineering Consulting	Right-of-Way	Utilities	Construction Engineering	Construction	Total	Federal Share	Local Share	
PD	0	1,000	0	0	0	0	1,000	927	73	
Fund Totals:	\$0	\$1,000	\$0	\$0	\$0	\$0	\$1,000	\$927	\$73	

Planning, Metropolitan Planning Funds, COMPASS

Key # : CPA2

COMPASS PM:

Federal PM:

Requesting Agency: COMPASS

Support

Project Year: 2020-2024

Total Previous Expenditures: \$0

Total Programmed Cost: \$7,465

Total Cost (Prev. + Prog.): \$7,465

Project Description : Metropolitan planning organization (MPO) planning funds from the Federal Highway Administration and Federal Transit Administration. These projects tie to ITD key numbers 19144, 19071, 19258, 20050, 20640, and ORN22108.



Metropolitan Planning

Funding Source		FTA 5303	Program					Transit Capital	Local Match 7.34%	
Cost Year*	Preliminary Engineering	Preliminary Engineering Consulting	Right-of-Way	Utilities	Construction Engineering	Construction	Total	Federal Share	Local Share	
2020	0	294	0	0	0	0	294	272	22	
2021	0	294	0	0	0	0	294	272	22	
2022	0	294	0	0	0	0	294	272	22	
2023	0	294	0	0	0	0	294	272	22	
2024	0	294	0	0	0	0	294	272	22	
Fund Totals:	\$0	\$1,470	\$0	\$0	\$0	\$0	\$1,470	\$1,362	\$108	

Funding Source		Metropolitan Planning	Program					Hwy - Metropolitan Planning	Local Match 7.34%	
Cost Year*	Preliminary Engineering	Preliminary Engineering Consulting	Right-of-Way	Utilities	Construction Engineering	Construction	Total	Federal Share	Local Share	
2020	0	1,199	0	0	0	0	1,199	1,111	88	
2021	0	1,199	0	0	0	0	1,199	1,111	88	
2022	0	1,199	0	0	0	0	1,199	1,111	88	
2023	0	1,199	0	0	0	0	1,199	1,111	88	
2024	0	1,199	0	0	0	0	1,199	1,111	88	
Fund Totals:	\$0	\$5,995	\$0	\$0	\$0	\$0	\$5,995	\$5,555	\$440	

*PD = Preliminary Development (projects with development activity but no programmed year of construction)

Sorted by Project Name
All Values in Thousands of Dollars

DRAFT

Page 42 of 69
Wednesday, May 15, 2019
1:13 PM

Planning, Travel Survey Data Collection, COMPASS

Key # : 19303

COMPASS PM:

Federal PM:

Requesting Agency: COMPASS

Support

Project Year: 2020-2021

Total Previous Expenditures: \$0

Total Programmed Cost: \$850

Total Cost (Prev. + Prog.): \$850

Project Description : Collect local travel data from households and bus riders to update and recalibrate the regional travel demand model.



Funding Source STP-TMA			Program Local Hwy - Transportation Management Area					Local Match 7.34%	
Cost Year*	Preliminary Engineering	Preliminary Engineering Consulting	Right-of-Way	Utilities	Construction Engineering	Construction	Total	Federal Share	Local Share
2020	0	150	0	0	0	0	150	139	11
2021	0	700	0	0	0	0	700	649	51
Fund Totals:	\$0	\$850	\$0	\$0	\$0	\$0	\$850	\$788	\$62

Railroad Crossing, Benjamin Lane, Boise

Key # : 20537

COMPASS PM:

Federal PM:

Requesting Agency: ACHD

Transportation Safety

Project Year: 2022

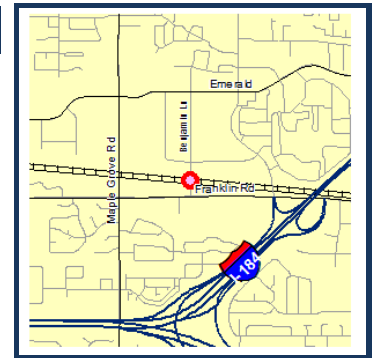
Community Infrastructure

Total Previous Expenditures: \$0

Total Programmed Cost: \$320

Total Cost (Prev. + Prog.): \$320

Project Description : Install crossing signal, including constant warning detection, at the Boise Valley Railroad crossing at Benjamin Lane in the City of Boise. Local match from State Rail Protection Account.



Funding Source Fed RRX			Program Hwy Safety - Federal Rail					Local Match 10.00%	
Cost Year*	Preliminary Engineering	Preliminary Engineering Consulting	Right-of-Way	Utilities	Construction Engineering	Construction	Total	Federal Share	Local Share
2021	10	0	0	0	0	0	10	9	1
2022	0	0	0	0	0	310	310	279	31
Fund Totals:	\$10	\$0	\$0	\$0	\$0	\$310	\$320	\$288	\$32

Railroad Crossing, Lemp Lane, Canyon County

Key # : 20358

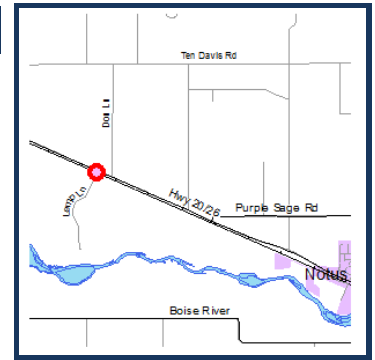
COMPASS PM:

Federal PM:

Requesting Agency: Notus-Parma Highway District
Project Year: PD
Total Previous Expenditures: \$0
Total Programmed Cost: \$255
Total Cost (Prev. + Prog.): \$255

Transportation Safety
 Farmland

Project Description : Install signals and gates at the Union Pacific railroad crossing at Lemp Lane in Canyon County between the Cities of Parma and Notus. Local match from State Rail Protection Account.



Funding Source		Fed RRX		Program		Hwy Safety - Federal Rail		Local Match 10.00%	
Cost Year*	Preliminary Engineering	Preliminary Engineering Consulting	Right-of-Way	Utilities	Construction Engineering	Construction	Total	Federal Share	Local Share
PD	5	0	0	0	0	250	255	230	26
Fund Totals:	\$5	\$0	\$0	\$0	\$0	\$250	\$255	\$230	\$26

Railroad Crossing, Look Lane, Caldwell

Key # : 20355

COMPASS PM:

Federal PM:

Requesting Agency: City of Caldwell
Project Year: 2020
Total Previous Expenditures: \$15
Total Programmed Cost: \$575
Total Cost (Prev. + Prog.): \$590

Maintenance
 Transportation Safety
 Farmland

Project Description : Relocate and realign the Union Pacific Railroad crossing at Look Lane in the City of Caldwell. Work includes adding a signal, gates, planking and a cabinet for electronics. Local match from State Rail Protection Account.



Funding Source		Fed RRX		Program		Hwy Safety - Federal Rail		Local Match 10.00%	
Cost Year*	Preliminary Engineering	Preliminary Engineering Consulting	Right-of-Way	Utilities	Construction Engineering	Construction	Total	Federal Share	Local Share
2020	0	60	0	0	5	510	575	518	58
Fund Totals:	\$0	\$60	\$0	\$0	\$5	\$510	\$575	\$518	\$58

Railroad Crossing, North Linder Road, Meridian

Key # : 19875

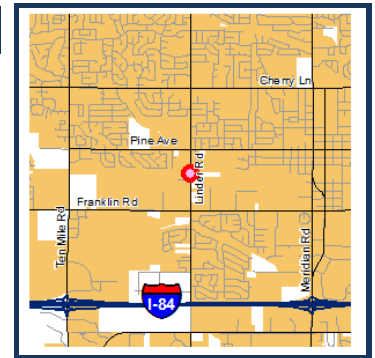
COMPASS PM:

Federal PM:

Requesting Agency: ACHD
Project Year: 2020
Total Previous Expenditures: \$15
Total Programmed Cost: \$510
Total Cost (Prev. + Prog.): \$525

Transportation Safety
 Community Infrastructure

Project Description : Install crossing signals and gates at the railroad crossing at North Linder Road in the City of Meridian. Local match from State Rail Protection Account.



Funding Source		Fed RRX		Program		Hwy Safety - Federal Rail		Local Match 10.00%	
Cost Year*	Preliminary Engineering	Preliminary Engineering Consulting	Right-of-Way	Utilities	Construction Engineering	Construction	Total	Federal Share	Local Share
2020	0	0	0	0	10	500	510	459	51
Fund Totals:	\$0	\$0	\$0	\$0	\$10	\$500	\$510	\$459	\$51

*PD = Preliminary Development (projects with development activity but no programmed year of construction)

Sorted by Project Name
 All Values in Thousands of Dollars

DRAFT

Page 44 of 69
 Wednesday, May 15, 2019
 1:13 PM

Railroad Crossing, Old Fort Boise Road, Canyon County

Key # : 20606

COMPASS PM:

Federal PM:

Requesting Agency: Notus-Parma Highway District
Project Year: 2023

Total Previous Expenditures: \$0

Total Programmed Cost: \$250

Total Cost (Prev. + Prog.): \$250

Project Description : Install signals and gates at the Union Pacific railroad crossing at Old Fort Boise Road in Canyon County, west of the City of Parma. Local match from State Rail Protection Account.



Funding Source		Program Hwy Safety - Federal Rail						Local Match 10.00%	
Cost Year*	Preliminary Engineering	Preliminary Engineering Consulting	Right-of-Way	Utilities	Construction Engineering	Construction	Total	Federal Share	Local Share
2022	10	0	0	10	0	0	20	18	2
2023	0	0	0	0	0	230	230	207	23
Fund Totals:	\$10	\$0	\$0	\$10	\$0	\$230	\$250	\$225	\$25

SH-16, I-84 to US 20/26, Ada and Canyon Counties

Key # : 20788

COMPASS PM:

Federal PM:

Requesting Agency: ITD

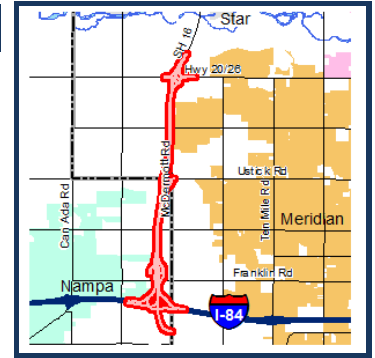
Project Year: 2019-2021

Total Previous Expenditures: \$76,025

Total Programmed Cost: \$22,415

Total Cost (Prev. + Prog.): \$98,440

Project Description : Preliminary engineering and right-of-way acquisition only on SH-16 between I-84 and US 20/26 (Chinden Boulevard) in Ada and Canyon Counties. Funds will be used to update traffic projections, validate right-of-way needs, account for recent development activity, develop a phasing plan for future construction, update right-of-way and construction costs, and acquire right-of-way. (Construction is considered "unfunded.")



Funding Source		Program State Hwy - Restoration						Local Match 73.40%	
Cost Year*	Preliminary Engineering	Preliminary Engineering Consulting	Right-of-Way	Utilities	Construction Engineering	Construction	Total	Federal Share	Local Share
2020	0	0	4,500	0	0	0	4,500	1,197	3,303
2021	0	0	7,500	0	0	0	7,500	1,995	5,505
Fund Totals:	\$0	\$0	\$12,000	\$0	\$0	\$0	\$12,000	\$3,192	\$8,808

Funding Source		Program State Hwy - Safety & Capacity (Capacity)						Local Match	
Cost Year*	Preliminary Engineering	Preliminary Engineering Consulting	Right-of-Way	Utilities	Construction Engineering	Construction	Total	Federal Share	Local Share
2020	0	0	10,415	0	0	0	10,415	10,415	0
Fund Totals:	\$0	\$0	\$10,415	\$0	\$0	\$0	\$10,415	\$10,415	\$0

SH-21, Technology Way to Surprise Way, Boise

Key # : 20428

Requesting Agency: ITD

Project Year: 2022

Total Previous Expenditures: \$150

Total Programmed Cost: \$5,000

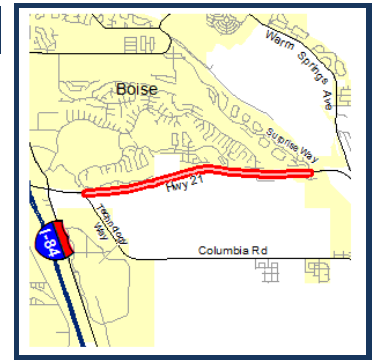
Total Cost (Prev. + Prog.): \$5,150

Project Description : Widen SH-21 from Technology Way (near Micron) to Surprise Way (just west of the Boise River Bridge) in the City of Boise. The project will widen the roadway to 40 feet to include two 12-foot travel lanes, a 4-foot center median, and 6-foot shoulders on both sides.

COMPASS PM:

Congestion Reduction/System Reliability
Transportation Safety
Community Infrastructure

Federal PM:



Funding Source HSIP			Program State Highway - Safety					Local Match 7.34%	
Cost Year*	Preliminary Engineering	Preliminary Engineering Consulting	Right-of-Way	Utilities	Construction Engineering	Construction	Total	Federal Share	Local Share
2022	0	0	0	0	500	4,500	5,000	4,633	367
Fund Totals:	\$0	\$0	\$0	\$0	\$500	\$4,500	\$5,000	\$4,633	\$367

SH-44 (State Street) and SH-55 (Eagle Road) Intersection, 1/2 CFI, Eagle

Key # : 13476

Requesting Agency: ITD

Project Year: 2021

Total Previous Expenditures: \$1,131

Total Programmed Cost: \$6,875

Total Cost (Prev. + Prog.): \$8,006

Project Description : Construct a partial (1/2) continuous flow intersection (CFI), including displaced left-turn lanes, at SH-44 (State Street) and SH-55 (Eagle Road) in the City of Eagle.

COMPASS PM:

Congestion Reduction/System Reliability
Freight Movement and Economic Vitality
Transportation Safety
Community Infrastructure

Federal PM:



Funding Source NHPP			Program State Hwy - Safety & Capacity (Capacity)					Local Match 7.34%	
Cost Year*	Preliminary Engineering	Preliminary Engineering Consulting	Right-of-Way	Utilities	Construction Engineering	Construction	Total	Federal Share	Local Share
2021	0	0	0	0	625	6,250	6,875	6,370	505
Fund Totals:	\$0	\$0	\$0	\$0	\$625	\$6,250	\$6,875	\$6,370	\$505

SH-44 (State Street), SH-16 to Linder Road, Ada County

Key # : 20266

Requesting Agency: ITD

Project Year: 2023

Total Previous Expenditures: \$413

Total Programmed Cost: \$9,250

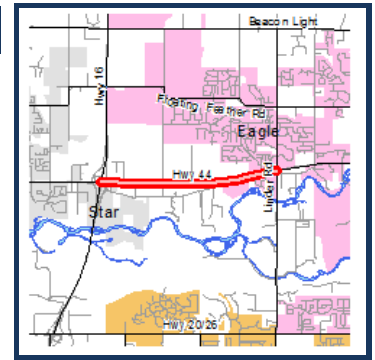
Total Cost (Prev. + Prog.): \$9,663

Project Description : Add an additional westbound and eastbound lane to improve congestion and reduce crashes along SH-44 (State Street) from SH-16 to Linder Road near the City of Eagle.

COMPASS PM:

Congestion Reduction/System Reliability
Freight Movement and Economic Vitality
Transportation Safety
Community Infrastructure

Federal PM:



Funding Source			Program					Local Match 100.00%	
Cost Year*	Preliminary Engineering	Preliminary Engineering Consulting	Right-of-Way	Utilities	Construction Engineering	Construction	Total	Federal Share	Local Share
2020	0	0	750	0	0	0	750	0	750
2023	0	0	0	0	750	7,750	8,500	0	8,500
Fund Totals:	\$0	\$0	\$750	\$0	\$750	\$7,750	\$9,250	\$0	\$9,250

SH-44 (State Street), Star Road to SH-16, Ada County

Key # : 20574

Requesting Agency: ITD

Project Year: 2024

Total Previous Expenditures: \$200

Total Programmed Cost: \$8,000

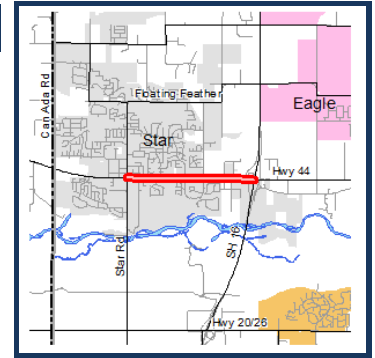
Total Cost (Prev. + Prog.): \$8,200

Project Description : Widen SH-44 (State Street) from Star Road to SH-16 in Ada County. An additional lane in both directions will alleviate congestion issues and improve safety.

COMPASS PM:

Congestion Reduction/System Reliability
Freight Movement and Economic Vitality
Transportation Safety
Community Infrastructure

Federal PM:



Funding Source			Program					Local Match 100.00%	
Cost Year*	Preliminary Engineering	Preliminary Engineering Consulting	Right-of-Way	Utilities	Construction Engineering	Construction	Total	Federal Share	Local Share
2020	0	500	0	0	0	0	500	0	500
2021	0	0	1,000	0	0	0	1,000	0	1,000
2024	0	0	0	0	500	6,000	6,500	0	6,500
Fund Totals:	\$0	\$500	\$1,000	\$0	\$500	\$6,000	\$8,000	\$0	\$8,000

SH-45, SH-78 to Melba Road, Canyon and Owyhee Counties

Key # : 21849

Requesting Agency: ITD

Project Year: 2025

Total Previous Expenditures: \$0

Total Programmed Cost: \$6,500

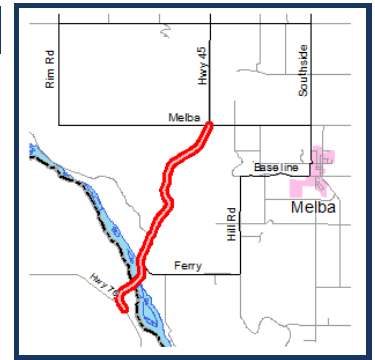
Total Cost (Prev. + Prog.): \$6,500

Project Description : Reconstruct SH-45 from the junction of SH-78 to Melba Road in Canyon County. (82% Canyon County and 17% Owyhee County)

COMPASS PM:

Maintenance
Farmland

Federal PM:



Funding Source NHPP		Program State Hwy - Restoration						Local Match 7.34%	
Cost Year*	Preliminary Engineering	Preliminary Engineering Consulting	Right-of-Way	Utilities	Construction Engineering	Construction	Total	Federal Share	Local Share
2020	520	0	0	0	0	0	520	482	38
2025	0	0	0	0	780	5,200	5,980	5,541	439
Fund Totals:	\$520	\$0	\$0	\$0	\$780	\$5,200	\$6,500	\$6,023	\$477

SH-55 (Eagle Road), Meridian Towne Center, Meridian

Key # : 13349

Requesting Agency: Private Developer

Project Year: 2022

Total Previous Expenditures: \$145

Total Programmed Cost: \$5,000

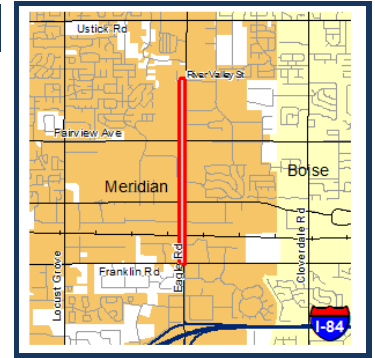
Total Cost (Prev. + Prog.): \$5,145

Project Description : Add one lane southbound from River Valley Street to Franklin Road in the City of Meridian. The project will be constructed by the developer of the Meridian Towne Center shopping center (The Village at Meridian) using State Tax Anticipated Revenue (STAR) financing.

COMPASS PM:

Congestion Reduction/System Reliability
Freight Movement and Economic Vitality
Transportation Safety
Community Infrastructure

Federal PM:



Funding Source STAR		Program Hwy - Local Partnerships						Local Match 100.00%	
Cost Year*	Preliminary Engineering	Preliminary Engineering Consulting	Right-of-Way	Utilities	Construction Engineering	Construction	Total	Federal Share	Local Share
2022	0	0	0	0	0	5,000	5,000	0	5,000
Fund Totals:	\$0	\$0	\$0	\$0	\$0	\$5,000	\$5,000	\$0	\$5,000

SH-55 (Karcher Road), Midway Road to Middleton Road, Nampa

Key # : 21867

Requesting Agency: ITD

Project Year: 2025

Total Previous Expenditures: \$0

Total Programmed Cost: \$6,210

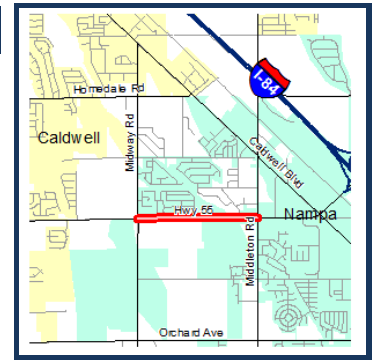
Total Cost (Prev. + Prog.): \$6,210

Project Description : Widen SH-55 (Karcher Road) from Midway Road to Middleton Road in the City of Nampa. The project will add one travel lane in each direction to improve mobility and reduce crashes along the corridor.

COMPASS PM:

Congestion Reduction/System Reliability
Transportation Safety
Freight Movement and Economic Vitality
Community Infrastructure

Federal PM:



Funding Source		TECM	Program					State Hwy - Safety & Capacity (Capacity)	Local Match 100.00%	
Cost Year*	Preliminary Engineering	Preliminary Engineering Consulting	Right-of-Way	Utilities	Construction Engineering	Construction	Total		Federal Share	Local Share
2020	300	0	0	0	0	0	300		0	300
2021	0	0	300	0	0	0	300		0	300
2025	0	0	0	0	510	5,100	5,610		0	5,610
Fund Totals:	\$300	\$0	\$300	\$0	\$510	\$5,100	\$6,210		\$0	\$6,210

SH-55, SH-44 (State Street) to Payette River Bridge, Rehabilitation

Key # : 20506

Requesting Agency: ITD

Project Year: 2023

Total Previous Expenditures: \$200

Total Programmed Cost: \$11,288

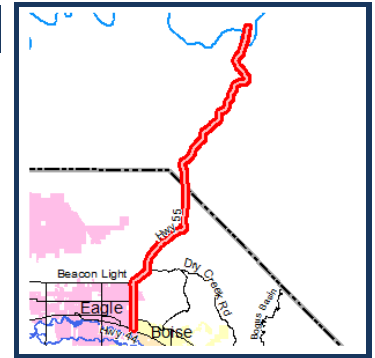
Total Cost (Prev. + Prog.): \$11,488

Project Description : Rehabilitate approximately 18 miles of pavement on SH-55 from SH-44 (State Street) to the Payette River Bridge in Ada and Boise Counties. (45% Ada County and 55% Boise County)

COMPASS PM:

Maintenance
Farmland

Federal PM:



Funding Source		NHPP	Program					State Hwy - Restoration	Local Match 7.34%	
Cost Year*	Preliminary Engineering	Preliminary Engineering Consulting	Right-of-Way	Utilities	Construction Engineering	Construction	Total		Federal Share	Local Share
2023	0	0	0	0	884	10,404	11,288		10,459	829
Fund Totals:	\$0	\$0	\$0	\$0	\$884	\$10,404	\$11,288		\$10,459	\$829

SH-55, Snake River Bridge, Marsing

Key # : 13387

Requesting Agency: ITD

Project Year: 2019-2020

Total Previous Expenditures: \$5,971

Total Programmed Cost: \$11,187

Total Cost (Prev. + Prog.): \$17,158

Project Description : Replace bridge on SH-55 over the Snake River near the City of Marsing. (69% Canyon County and 31% Owyhee County).

COMPASS PM:

Freight Movement and Economic Vitality
Transportation Infrastructure
Farmland

Federal PM:



Funding Source		Bridge State		Program		State Hwy - Bridge Restoration		Local Match 100.00%	
Cost Year*	Preliminary Engineering	Preliminary Engineering Consulting	Right-of-Way	Utilities	Construction Engineering	Construction	Total	Federal Share	Local Share
2020	0	0	0	0	0	11,187	11,187	0	11,187
Fund Totals:	\$0	\$0	\$0	\$0	\$0	\$11,187	\$11,187	\$0	\$11,187

South Cemetery Road, Highland Drive to Willow Creek, Middleton

Key # : 12048

Requesting Agency: City of Middleton

Project Year: 2021

Total Previous Expenditures: \$762

Total Programmed Cost: \$2,707

Total Cost (Prev. + Prog.): \$3,469

Project Description : Construct a new 0.284 mile roadway segment linking SH-44 and Middleton Road by way of Highland Drive and Sawtooth Lake Drive in the City of Middleton.

COMPASS PM:

Congestion Reduction/System Reliability
Community Infrastructure

Federal PM:



Funding Source		STP-U		Program		Local Hwy - Urban		Local Match 7.34%	
Cost Year*	Preliminary Engineering	Preliminary Engineering Consulting	Right-of-Way	Utilities	Construction Engineering	Construction	Total	Federal Share	Local Share
2021	0	0	0	0	424	2,283	2,707	2,508	199
Fund Totals:	\$0	\$0	\$0	\$0	\$424	\$2,283	\$2,707	\$2,508	\$199

SR2S, VRT, Ada County - FY2021 and FY2022

Key # : 20245

COMPASS PM:

Federal PM:

Requesting Agency: Valley Regional Transit

Support

Project Year: 2021-2022

Total Previous Expenditures: \$0

Total Programmed Cost: \$337

Total Cost (Prev. + Prog.): \$337

Project Description : Support up to three full-time staff for Safe Routes to Schools (SR2S) coordination serving school in Ada County with a focus on the Boise and West Ada School Districts for service years FY2021 and FY2022. The Treasure Valley YMCA will receive pass-through funds for this project.



SR2S
Safe Routes to School

Funding Source TAP-TMA		Program Local Hwy - Transportation Alternatives						Local Match 7.34%	
Cost Year*	Preliminary Engineering	Preliminary Engineering Consulting	Right-of-Way	Utilities	Construction Engineering	Construction	Total	Federal Share	Local Share
2021	0	0	0	0	0	337	337	312	25
Fund Totals:	\$0	\$0	\$0	\$0	\$0	\$337	\$337	\$312	\$25

SR2S, VRT, Ada County - FY2023

Key # : 20493

COMPASS PM:

Federal PM:

Requesting Agency: Valley Regional Transit

Support

Project Year: 2023

Total Previous Expenditures: \$0

Total Programmed Cost: \$165

Total Cost (Prev. + Prog.): \$165

Project Description : Support up to three full-time staff for Safe Routes to School (SR2S) coordination serving schools in Ada County with a focus on Boise and West Ada School Districts for service year FY2023. The Treasure Valley YMCA will receive pass-through funds for this project.



SR2S
Safe Routes to School

Funding Source TAP-TMA		Program Local Hwy - Transportation Alternatives						Local Match 7.34%	
Cost Year*	Preliminary Engineering	Preliminary Engineering Consulting	Right-of-Way	Utilities	Construction Engineering	Construction	Total	Federal Share	Local Share
2023	0	0	0	0	0	165	165	153	12
Fund Totals:	\$0	\$0	\$0	\$0	\$0	\$165	\$165	\$153	\$12

SR2S, VRT, Ada County - FY2024 and FY2025

Key # : 21910

COMPASS PM:

Federal PM:

Requesting Agency: Valley Regional Transit

Support

Project Year: 2024-2025

Total Previous Expenditures: \$0

Total Programmed Cost: \$389

Total Cost (Prev. + Prog.): \$389

Project Description : Support up to three full-time and one part-time staff for Safe Routes to School (SR2S) coordination serving schools in Ada County with a focus on the Boise and West Ada School Districts for service years FY2024 and FY2025. The Treasure Valley YMCA will receive pass-through funds for this project.



SR2S
Safe Routes to School

Funding Source TAP-TMA			Program Local Hwy - Transportation Alternatives					Local Match 7.34%	
Cost Year*	Preliminary Engineering	Preliminary Engineering Consulting	Right-of-Way	Utilities	Construction Engineering	Construction	Total	Federal Share	Local Share
2024	0	0	0	0	0	389	389	360	29
Fund Totals:	\$0	\$0	\$0	\$0	\$0	\$389	\$389	\$360	\$29

SR2S, VRT, Canyon County - FY2020

Key # : 22030

COMPASS PM:

Federal PM:

Requesting Agency: Valley Regional Transit

Support

Project Year: 2020

Total Previous Expenditures: \$0

Total Programmed Cost: \$65

Total Cost (Prev. + Prog.): \$65

Project Description : Provides for Safe Routes to School program personnel, education materials, encouragement incentives, special events, and indirect costs in Canyon County.



SR2S
Safe Routes to School

Funding Source TAP-Urban			Program Local Hwy - Transportation Alternatives					Local Match 7.34%	
Cost Year*	Preliminary Engineering	Preliminary Engineering Consulting	Right-of-Way	Utilities	Construction Engineering	Construction	Total	Federal Share	Local Share
2020	0	0	0	0	0	65	65	60	5
Fund Totals:	\$0	\$0	\$0	\$0	\$0	\$65	\$65	\$60	\$5

SR2S, VRT, Canyon County - FY2021

Key # : 22031

COMPASS PM:

Federal PM:

Requesting Agency: Valley Regional Transit

Support

Project Year: 2021

Total Previous Expenditures: \$0

Total Programmed Cost: \$65

Total Cost (Prev. + Prog.): \$65

Project Description : Provides for Safe Routes to School program personnel, education materials, encouragement incentives, special events, and indirect costs in Canyon County.



SR2S
Safe Routes to School

Funding Source		TAP-Urban		Program		Local Hwy - Transportation Alternatives		Local Match 7.34%	
Cost Year*	Preliminary Engineering	Preliminary Engineering Consulting	Right-of-Way	Utilities	Construction Engineering	Construction	Total	Federal Share	Local Share
2021	0	0	0	0	0	65	65	60	5
Fund Totals:	\$0	\$0	\$0	\$0	\$0	\$65	\$65	\$60	\$5

Study, Big Data Purchase, COMPASS

Key # : ORN22394

COMPASS PM:

Federal PM:

Requesting Agency: COMPASS

Support

Project Year: PD

Total Previous Expenditures: \$0

Total Programmed Cost: \$150

Total Cost (Prev. + Prog.): \$150

Project Description : Purchase data from vendor(s) to supplement the COMPASS Household Travel Survey data (2021) and census data. The data will be used to update the "external" trip (trip to/from the surrounding counties) rates and characteristics in the regional travel demand model, analyze non-motorized travel, and allow for review of trips, travel time, time of day, and mode to and from sub-areas (smaller than cities) in the region to help refine specific parameters in the regional model.



Funding Source		STP-TMA		Program		Local Hwy - Transportation Management Area		Local Match 7.34%	
Cost Year*	Preliminary Engineering	Preliminary Engineering Consulting	Right-of-Way	Utilities	Construction Engineering	Construction	Total	Federal Share	Local Share
PD	0	150	0	0	0	0	150	139	11
Fund Totals:	\$0	\$150	\$0	\$0	\$0	\$0	\$150	\$139	\$11

*PD = Preliminary Development (projects with development activity but no programmed year of construction)

Study, Fiscal Impact Analysis, COMPASS

Key # : ORN22395

COMPASS PM:

Federal PM:

Requesting Agency: COMPASS

Support

Project Year: PD

Total Previous Expenditures: \$0

Total Programmed Cost: \$60

Total Cost (Prev. + Prog.): \$60

Project Description : To better implement the goals of Communities in Motion, this project will provide information on the fiscal impact of various growth patterns. Work will develop a fiscal impact analysis calculator; analyze the public costs and revenues of various land use patterns; build an economic model that can be used in the COMPASS development checklist for highlighting the costs of development; and conducting outreach and training for local decision-makers so that fiscal analysis can be used in local land use decision-making.



Funding Source STP-TMA			Program Local Hwy - Transportation Management Area					Local Match 7.34%	
Cost Year*	Preliminary Engineering	Preliminary Engineering Consulting	Right-of-Way	Utilities	Construction Engineering	Construction	Total	Federal Share	Local Share
PD	0	60	0	0	0	0	60	56	4
Fund Totals:	\$0	\$60	\$0	\$0	\$0	\$0	\$60	\$56	\$4

Study, Mores Creek Bridge Asset Plan, Ada County

Key # : 21968

COMPASS PM:

Federal PM:

Requesting Agency: ITD

Support

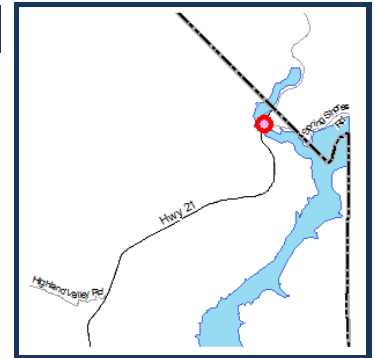
Project Year: 2019-2020

Total Previous Expenditures: \$275

Total Programmed Cost: \$5

Total Cost (Prev. + Prog.): \$280

Project Description : Develop a bridge asset management plan for the Mores Creek Bridge, located on SH-21 about one-half mile from the Ada/Boise County line.



Funding Source STP-State			Program State Hwy - Bridge Preservation					Local Match 7.34%	
Cost Year*	Preliminary Engineering	Preliminary Engineering Consulting	Right-of-Way	Utilities	Construction Engineering	Construction	Total	Federal Share	Local Share
2020	5	0	0	0	0	0	5	5	0
Fund Totals:	\$5	\$0	\$0	\$0	\$0	\$0	\$5	\$5	\$0

Study, Pavement Management Inventory and Plan, Canyon County

Key # : 22020

COMPASS PM:

Federal PM:

Requesting Agency: COMPASS

Support

Project Year: PD

Total Previous Expenditures: \$0

Total Programmed Cost: \$150

Total Cost (Prev. + Prog.): \$150

Project Description : Conduct a study to collect pavement condition data on arterial and collector roadways for a pavement condition index for jurisdictions not currently conducting such inspections in Canyon County. The study will also establish baseline data for pavement information, establish reporting protocols and collaboration of reporting, procure and support software purchase and training to perform predictive budgeting for pavement management programs.



Funding Source STP-U		Program Local Hwy - Urban					Local Match 7.34%		
Cost Year*	Preliminary Engineering	Preliminary Engineering Consulting	Right-of-Way	Utilities	Construction Engineering	Construction	Total	Federal Share	Local Share
PD	0	150	0	0	0	0	150	139	11
Fund Totals:	\$0	\$150	\$0	\$0	\$0	\$0	\$150	\$139	\$11

Ten Mile Road, McMillan Road to US 20/26 (Chinden Boulevard), Meridian

Key # : RD202-31

COMPASS PM:

Federal PM:

Requesting Agency: ACHD

Congestion Reduction/System Reliability

Project Year: PD

Transportation Safety

Total Previous Expenditures:

Community Infrastructure

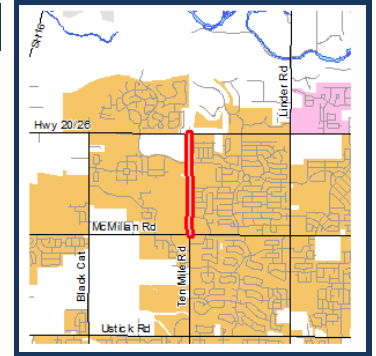
Total Programmed Cost: \$3,427

Environmental Sustainability

Total Cost (Prev. + Prog.): \$0

Health

Project Description : Widen Ten Mile Road from McMillan Road to US 20/26 (Chinden Boulevard) in the City of Meridian to five lanes including curb, gutter, sidewalk, and bike lanes.



Funding Source Local (Regionally Significant)		Program Hwy - Local Partnerships					Local Match 100.00%		
Cost Year*	Preliminary Engineering	Preliminary Engineering Consulting	Right-of-Way	Utilities	Construction Engineering	Construction	Total	Federal Share	Local Share
2021	0	260	0	0	0	0	260	0	260
PD	0	0	550	0	0	2,617	3,167	0	3,167
Fund Totals:	\$0	\$260	\$550	\$0	\$0	\$2,617	\$3,427	\$0	\$3,427

Ten Mile Road, Ustick Road to McMillan Road, Meridian

Key # : RD202-32

COMPASS PM:

Federal PM:

Requesting Agency: ACHD

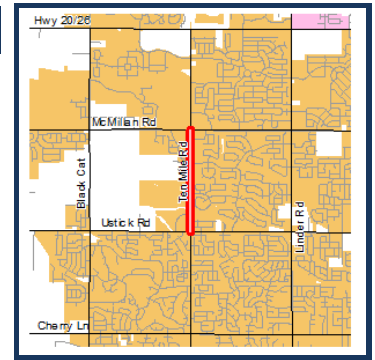
Project Year: PD

Total Previous Expenditures:

Total Programmed Cost: \$3,986

Total Cost (Prev. + Prog.): \$0

Project Description : Widen Ten Mile Road from Ustick Road to McMillan Road in the City of Meridian to five lanes including curb, gutter, sidewalk, bike lanes and two bridge structures.



Funding Source Local (Regionally Significant) Program Hwy - Local Partnerships								Local Match 100.00%	
Cost Year*	Preliminary Engineering	Preliminary Engineering Consulting	Right-of-Way	Utilities	Construction Engineering	Construction	Total	Federal Share	Local Share
2020	0	300	0	0	0	0	300	0	300
2021	0	0	630	0	0	0	630	0	630
PD	0	0	0	0	0	3,056	3,056	0	3,056
Fund Totals:	\$0	\$300	\$630	\$0	\$0	\$3,056	\$3,986	\$0	\$3,986

Transit - Acquisition of Service, Boise Area

Key # : 19691

COMPASS PM:

Federal PM:

Requesting Agency: Valley Regional Transit

Project Year: 2020-PD

Total Previous Expenditures: \$0

Total Programmed Cost: \$2,244

Total Cost (Prev. + Prog.): \$2,244

Project Description : Provide transportation services through local human service organizations who work with the elderly and persons with disabilities in the Boise Urbanized Area. See Valley Regional Transit's Program of Projects for more details.



Funding Source FTA 5310 LU Program Transit Capital								Local Match 20.00%	
Cost Year*	Preliminary Engineering	Preliminary Engineering Consulting	Right-of-Way	Utilities	Construction Engineering	Construction	Total	Federal Share	Local Share
2020	0	0	0	0	0	374	374	299	75
2021	0	0	0	0	0	374	374	299	75
2022	0	0	0	0	0	374	374	299	75
2023	0	0	0	0	0	374	374	299	75
2024	0	0	0	0	0	374	374	299	75
PD	0	0	0	0	0	374	374	299	75
Fund Totals:	\$0	\$0	\$0	\$0	\$0	\$2,244	\$2,244	\$1,795	\$449

*PD = Preliminary Development (projects with development activity but no programmed year of construction)

Transit - Acquisition of Service, Nampa Area

Key # : 19464

COMPASS PM:

Federal PM:

Requesting Agency: Valley Regional Transit

Support

Project Year: 2019-2021

Total Previous Expenditures: \$283

Total Programmed Cost: \$566

Total Cost (Prev. + Prog.): \$849

Project Description : Provide transportation services through local human service organizations who work with the elderly and persons with disabilities in the Nampa Urbanized Area. FY2017 funds carried over to FY2018. Additional details about this program are included in ITD's programming documents.



Funding Source		FTA 5310 SU		Program		Transit Capital		Local Match 20.00%	
Cost Year*	Preliminary Engineering	Preliminary Engineering Consulting	Right-of-Way	Utilities	Construction Engineering	Construction	Total	Federal Share	Local Share
2020	0	0	0	0	0	283	283	226	57
2021	0	0	0	0	0	283	283	226	57
Fund Totals:	\$0	\$0	\$0	\$0	\$0	\$566	\$566	\$453	\$113

Transit - Capital, Rolling Stock, Infrastructure, and Technology, Boise Area

Key # : 19122

COMPASS PM:

Federal PM:

Requesting Agency: Valley Regional Transit

Transportation Infrastructure

Project Year: 2020-PD

Total Previous Expenditures: \$0

Total Programmed Cost: \$4,164

Total Cost (Prev. + Prog.): \$4,164

Project Description : Provide expansion and replacement of rolling stock, infrastructure, and technology in the Boise Urbanized Area. See Valley Regional Transit's Program of Projects for more details.



Funding Source		FTA 5339 LU		Program		Transit Capital		Local Match 20.00%	
Cost Year*	Preliminary Engineering	Preliminary Engineering Consulting	Right-of-Way	Utilities	Construction Engineering	Construction	Total	Federal Share	Local Share
2020	0	0	0	0	0	694	694	555	139
2021	0	0	0	0	0	694	694	555	139
2022	0	0	0	0	0	694	694	555	139
2023	0	0	0	0	0	694	694	555	139
2024	0	0	0	0	0	694	694	555	139
PD	0	0	0	0	0	694	694	555	139
Fund Totals:	\$0	\$0	\$0	\$0	\$0	\$4,164	\$4,164	\$3,331	\$833

*PD = Preliminary Development (projects with development activity but no programmed year of construction)

Sorted by Project Name
All Values in Thousands of Dollars

DRAFT

Page 57 of 69
Wednesday, May 15, 2019
1:14 PM

Transit - Fixed Line Service, Rural Areas, TVT

Key # : 19983

Requesting Agency: Treasure Valley Transit

Project Year: 2019-2020

Total Previous Expenditures: \$1,983

Total Programmed Cost: \$1,973

Total Cost (Prev. + Prog.): \$3,956

Project Description : Fixed line service in rural areas of Southwest Idaho, including Ada and Canyon Counties for all groups, including but not limited to, older adults, persons with disabilities, youth, low income, non-drivers, minority groups, veterans, and refugee populations. The project includes required demand response service, as well as administration, operations, preventive maintenance, and capital purchases. Various aspects of the project have different local match rates. The match rate shown is an average of the rates combined. Additional details about this program are included in ITD's programming documents.

COMPASS PM:

Maintenance

Transportation Infrastructure

Congestion Reduction/System Reliability

Federal PM:



Funding Source FTA 5311		Program Transit Operations						Local Match 28.21%	
Cost Year*	Preliminary Engineering	Preliminary Engineering Consulting	Right-of-Way	Utilities	Construction Engineering	Construction	Total	Federal Share	Local Share
2020	0	0	0	0	0	1,973	1,973	1,416	557
Fund Totals:	\$0	\$0	\$0	\$0	\$0	\$1,973	\$1,973	\$1,416	\$557

Transit - Mobility Management Operations, Boise Area

Key # : 19041

Requesting Agency: Valley Regional Transit

Project Year: 2020-PD

Total Previous Expenditures: \$0

Total Programmed Cost: \$4,284

Total Cost (Prev. + Prog.): \$4,284

Project Description : Provide operations for mobility management programs in the Boise Urbanized Area. See Valley Regional Transit's Program of Projects for more details.

COMPASS PM:

Support

Federal PM:



Funding Source FTA 5307 LU		Program Transit Operations						Local Match 50.00%	
Cost Year*	Preliminary Engineering	Preliminary Engineering Consulting	Right-of-Way	Utilities	Construction Engineering	Construction	Total	Federal Share	Local Share
2020	0	0	0	0	0	714	714	357	357
2021	0	0	0	0	0	714	714	357	357
2022	0	0	0	0	0	714	714	357	357
2023	0	0	0	0	0	714	714	357	357
2024	0	0	0	0	0	714	714	357	357
PD	0	0	0	0	0	714	714	357	357
Fund Totals:	\$0	\$0	\$0	\$0	\$0	\$4,284	\$4,284	\$2,142	\$2,142

*PD = Preliminary Development (projects with development activity but no programmed year of construction)

Transit - Nampa Transit-Oriented Development, Design and Property, TVT

Key # : 19380a

COMPASS PM:

Federal PM:

Requesting Agency: Treasure Valley Transit

Transportation Infrastructure



Project Year: 2020

Total Previous Expenditures: \$0

Total Programmed Cost: \$860

Total Cost (Prev. + Prog.): \$860

Project Description : Design and construct a transit-oriented development using an existing building to create administrative offices for Treasure Valley Transit, and a central transportation and community services hub in an economically depressed area in the City of Nampa. Other aspects of the project include an expanded network of local complete streets, pedestrian and bicycle improvements, and transit linkages. Funds are currently for design and property acquisition only. Construction is considered "unfunded." Construction funding will be added as costs and the location are determined, and funds become available. Companioned with KN 20789 and KN 20136d.

Funding Source FTA 5311			Program Transit Capital				Local Match 20.00%		
Cost Year*	Preliminary Engineering	Preliminary Engineering Consulting	Right-of-Way	Utilities	Construction Engineering	Construction	Total	Federal Share	Local Share
2020	0	384	476	0	0	0	860	688	172
Fund Totals:	\$0	\$384	\$476	\$0	\$0	\$0	\$860	\$688	\$172

Transit - Nampa Transit-Oriented Development, Property, TVT

Key # : 20136d

COMPASS PM:

Federal PM:

Requesting Agency: Treasure Valley Transit

Transportation Infrastructure



Project Year: 2020

Total Previous Expenditures: \$0

Total Programmed Cost: \$649

Total Cost (Prev. + Prog.): \$649

Project Description : Design and construct a transit-oriented development using an existing building to create administrative offices for Treasure Valley Transit, and a central transportation and community services hub in an economically depressed area in the City of Nampa. Other aspects of the project include an expanded network of local complete streets, pedestrian and bicycle improvements, and transit linkages. These funds are currently for property acquisition only. Construction is considered "unfunded." Construction funding will be added as costs and the location are determined, and funds become available. Companioned with KN 20789 and KN 19380a.

Funding Source FTA 5339 R			Program Transit Capital				Local Match 20.00%		
Cost Year*	Preliminary Engineering	Preliminary Engineering Consulting	Right-of-Way	Utilities	Construction Engineering	Construction	Total	Federal Share	Local Share
2020	0	0	649	0	0	0	649	519	130
Fund Totals:	\$0	\$0	\$649	\$0	\$0	\$0	\$649	\$519	\$130

Transit - Operations, Fixed Route, and Mobility Management, Nampa Area

Key # : 18786

COMPASS PM:

Federal PM:

Requesting Agency: Valley Regional Transit

Support

Project Year: 2020-PD

Total Previous Expenditures: \$0

Total Programmed Cost: \$8,136

Total Cost (Prev. + Prog.): \$8,136

Project Description : Provide for fixed route and mobility management operations and services in the Nampa Urbanized Area. See Valley Regional Transit's Program of Projects for more details.



Funding Source		FTA 5307 SU		Program			Transit Operations	Local Match 50.00%	
Cost Year*	Preliminary Engineering	Preliminary Engineering Consulting	Right-of-Way	Utilities	Construction Engineering	Construction	Total	Federal Share	Local Share
2020	0	0	0	0	0	1,356	1,356	678	678
2021	0	0	0	0	0	1,356	1,356	678	678
2022	0	0	0	0	0	1,356	1,356	678	678
2023	0	0	0	0	0	1,356	1,356	678	678
2024	0	0	0	0	0	1,356	1,356	678	678
PD	0	0	0	0	0	1,356	1,356	678	678
Fund Totals:	\$0	\$0	\$0	\$0	\$0	\$8,136	\$8,136	\$4,068	\$4,068

Transit - Preventive Maintenance and Demand Response, Nampa Area

Key # : 18914

COMPASS PM:

Federal PM:

Requesting Agency: Valley Regional Transit

Maintenance

Project Year: 2020-PD

Support

Total Previous Expenditures: \$0

Total Programmed Cost: \$1,854

Total Cost (Prev. + Prog.): \$1,854

Project Description : Provide preventive maintenance and complementary paratransit to sustain vehicle and facility safety and security in the Nampa Urbanized Area. See Valley Regional Transit's Program of Projects for more details.



Funding Source		FTA 5307 SU		Program			Transit Capital	Local Match 20.00%	
Cost Year*	Preliminary Engineering	Preliminary Engineering Consulting	Right-of-Way	Utilities	Construction Engineering	Construction	Total	Federal Share	Local Share
2020	0	0	0	0	0	309	309	247	62
2021	0	0	0	0	0	309	309	247	62
2022	0	0	0	0	0	309	309	247	62
2023	0	0	0	0	0	309	309	247	62
2024	0	0	0	0	0	309	309	247	62
PD	0	0	0	0	0	309	309	247	62
Fund Totals:	\$0	\$0	\$0	\$0	\$0	\$1,854	\$1,854	\$1,483	\$371

*PD = Preliminary Development (projects with development activity but no programmed year of construction)

Sorted by Project Name
All Values in Thousands of Dollars

DRAFT

Transit - Preventive Maintenance, and Paratransit, Boise Area

Key # : 19137

COMPASS PM:

Federal PM:

Requesting Agency: Valley Regional Transit

Maintenance
Support

Project Year: 2020-PD

Total Previous Expenditures: \$0

Total Programmed Cost: \$15,648

Total Cost (Prev. + Prog.): \$15,648

Project Description : Provide preventive maintenance and complementary paratransit operation services to sustain vehicle and facility safety and security in the Boise Urbanized Area. See Valley Regional Transit's Program of Projects for more details.



Funding Source			FTA 5307 LU		Program		Transit Capital		Local Match 20.00%	
Cost Year*	Preliminary Engineering	Preliminary Engineering Consulting	Right-of-Way	Utilities	Construction Engineering	Construction	Total	Federal Share	Local Share	
2020	0	0	0	0	0	2,608	2,608	2,086	522	
2021	0	0	0	0	0	2,608	2,608	2,086	522	
2022	0	0	0	0	0	2,608	2,608	2,086	522	
2023	0	0	0	0	0	2,608	2,608	2,086	522	
2024	0	0	0	0	0	2,608	2,608	2,086	522	
PD	0	0	0	0	0	2,608	2,608	2,086	522	
Fund Totals:	\$0	\$0	\$0	\$0	\$0	\$15,648	\$15,648	\$12,518	\$3,130	

Transit - Purchase of Service, Rural Areas, TVT

Key # : 19981a

COMPASS PM:

Federal PM:

Requesting Agency: Treasure Valley Transit

Congestion Reduction/System Reliability

Project Year: 2019-2020

Total Previous Expenditures: \$134

Total Programmed Cost: \$134

Total Cost (Prev. + Prog.): \$268

Project Description : Provide transportation services through Treasure Valley Transit in rural areas of Southwest Idaho, including Canyon County, for services in FY2019 and FY2020. Additional details about this program are included in ITD's programming documents.



Funding Source FTA 5310 R			Program		Transit Capital			Local Match 20.00%		
Cost Year*	Preliminary Engineering	Preliminary Engineering Consulting	Right-of-Way	Utilities	Construction Engineering	Construction	Total	Federal Share	Local Share	
2020	0	0	0	0	0	134	134	107	27	
Fund Totals:	\$0	\$0	\$0	\$0	\$0	\$134	\$134	\$107	\$27	

Transit - Purchase of Service, Rural Areas, VRT

Key # : 19981b

COMPASS PM:

Federal PM:

Requesting Agency: Valley Regional Transit

Congestion Reduction/System Reliability

Project Year: 2019-2020

Total Previous Expenditures: \$47

Total Programmed Cost: \$47

Total Cost (Prev. + Prog.): \$94

Project Description : Provide transportation services through Valley Regional Transit in rural areas of Ada and Canyon Counties, for services in FY2019 and FY2020. Additional details about this program are included in ITD's programming documents.



Funding Source		FTA 5310 R		Program		Transit Capital		Local Match 20.00%	
Cost Year*	Preliminary Engineering	Preliminary Engineering Consulting	Right-of-Way	Utilities	Construction Engineering	Construction	Total	Federal Share	Local Share
2020	0	0	0	0	0	47	47	38	9
Fund Totals:	\$0	\$0	\$0	\$0	\$0	\$47	\$47	\$38	\$9

Transit - Replacement Vehicle, Parma Senior Center, VRT

Key # : 19981c

COMPASS PM:

Federal PM:

Requesting Agency: Valley Regional Transit

Transportation Infrastructure

Project Year: 2020

Total Previous Expenditures: \$0

Total Programmed Cost: \$68

Total Cost (Prev. + Prog.): \$68

Project Description : Replace a transit vehicle used by the Parma Senior Center for services for persons who are elderly or disabled. Additional details about this program are included in ITD's programming documents.



Funding Source		FTA 5310 R		Program		Transit Capital		Local Match 20.00%	
Cost Year*	Preliminary Engineering	Preliminary Engineering Consulting	Right-of-Way	Utilities	Construction Engineering	Construction	Total	Federal Share	Local Share
2020	0	0	0	0	0	68	68	54	14
Fund Totals:	\$0	\$0	\$0	\$0	\$0	\$68	\$68	\$54	\$14

Transit - Vehicle Replacements, Rural Areas, TVT

Key # : 20136b

COMPASS PM:

Federal PM:

Requesting Agency: Treasure Valley Transit

Transportation Infrastructure

Project Year: 2019-2020

Total Previous Expenditures: \$432

Total Programmed Cost: \$195

Total Cost (Prev. + Prog.): \$627

Project Description : Purchase replacement transit vehicles that are currently operating fixed route and demand response services within rural areas of District 3. Additional details about this program are included in ITD's programming documents.



Funding Source		FTA 5339 R		Program		Transit Capital		Local Match 20.00%	
Cost Year*	Preliminary Engineering	Preliminary Engineering Consulting	Right-of-Way	Utilities	Construction Engineering	Construction	Total	Federal Share	Local Share
2020	0	0	0	0	0	195	195	156	39
Fund Totals:	\$0	\$0	\$0	\$0	\$0	\$195	\$195	\$156	\$39

*PD = Preliminary Development (projects with development activity but no programmed year of construction)

Sorted by Project Name
All Values in Thousands of Dollars

DRAFT

Page 62 of 69
Wednesday, May 15, 2019
1:14 PM

Transit Asset Management, Boise Area

Key # : 18788

COMPASS PM:

Federal PM:

Requesting Agency: Valley Regional Transit

Transportation Infrastructure

Project Year: 2020-PD

Total Previous Expenditures: \$0

Total Programmed Cost: \$1,703

Total Cost (Prev. + Prog.): \$1,703

Project Description : Fund capital projects identified in the Transit Asset Management Plan in the Boise Urbanized Area.



Funding Source FTA 5307 LU			Program Transit Capital				Local Match 20.00%		
Cost Year*	Preliminary Engineering	Preliminary Engineering Consulting	Right-of-Way	Utilities	Construction Engineering	Construction	Total	Federal Share	Local Share
2020	0	0	0	0	0	558	558	446	112
2021	0	0	0	0	0	229	229	183	46
2022	0	0	0	0	0	229	229	183	46
2023	0	0	0	0	0	229	229	183	46
2024	0	0	0	0	0	229	229	183	46
PD	0	0	0	0	0	229	229	183	46
Fund Totals:	\$0	\$0	\$0	\$0	\$0	\$1,703	\$1,703	\$1,362	\$341

Transit Asset Management, Nampa Area

Key # : 18781

COMPASS PM:

Federal PM:

Requesting Agency: Valley Regional Transit

Transportation Infrastructure

Project Year: 2020-PD

Support

Total Previous Expenditures: \$0

Total Programmed Cost: \$8,478

Total Cost (Prev. + Prog.): \$8,478

Project Description : Fund capital projects identified in the Transit Asset Management Plan in the Nampa Urbanized Area.



Funding Source FTA 5307 SU			Program Transit Capital				Local Match 20.00%		
Cost Year*	Preliminary Engineering	Preliminary Engineering Consulting	Right-of-Way	Utilities	Construction Engineering	Construction	Total	Federal Share	Local Share
2020	0	0	0	0	0	1,413	1,413	1,130	283
2021	0	0	0	0	0	1,413	1,413	1,130	283
2022	0	0	0	0	0	1,413	1,413	1,130	283
2023	0	0	0	0	0	1,413	1,413	1,130	283
2024	0	0	0	0	0	1,413	1,413	1,130	283
PD	0	0	0	0	0	1,413	1,413	1,130	283
Fund Totals:	\$0	\$0	\$0	\$0	\$0	\$8,478	\$8,478	\$6,782	\$1,696

*PD = Preliminary Development (projects with development activity but no programmed year of construction)

Sorted by Project Name
All Values in Thousands of Dollars

DRAFT

Page 63 of 69
Wednesday, May 15, 2019
1:14 PM

Transit Asset Management, VRT, Boise Area - FY2020

Key # : 19057

COMPASS PM:

Federal PM:

Requesting Agency: Valley Regional Transit

Transportation Infrastructure

Project Year: 2020

Total Previous Expenditures: \$0

Total Programmed Cost: \$1,575

Total Cost (Prev. + Prog.): \$1,575

Project Description : Fund capital projects identified in the Transit Asset Management Plan in 2020 in the Boise Urbanized Area.



Funding Source STP-TMA			Program Local Hwy - Transportation Management Area					Local Match 7.34%	
Cost Year*	Preliminary Engineering	Preliminary Engineering Consulting	Right-of-Way	Utilities	Construction Engineering	Construction	Total	Federal Share	Local Share
2020	0	0	0	0	0	1,575	1,575	1,459	116
Fund Totals:	\$0	\$0	\$0	\$0	\$0	\$1,575	\$1,575	\$1,459	\$116

Transit Asset Management, VRT, Boise Area - FY2021

Key # : 18905

COMPASS PM:

Federal PM:

Requesting Agency: Valley Regional Transit

Transportation Infrastructure

Project Year: 2021

Total Previous Expenditures: \$0

Total Programmed Cost: \$1,542

Total Cost (Prev. + Prog.): \$1,542

Project Description : Fund capital projects identified in the Transit Asset Management Plan in FY2021 in the Boise Urbanized Area.



Funding Source STP-TMA			Program Local Hwy - Transportation Management Area					Local Match 7.34%	
Cost Year*	Preliminary Engineering	Preliminary Engineering Consulting	Right-of-Way	Utilities	Construction Engineering	Construction	Total	Federal Share	Local Share
2021	0	0	0	0	0	1,542	1,542	1,429	113
Fund Totals:	\$0	\$0	\$0	\$0	\$0	\$1,542	\$1,542	\$1,429	\$113

Transit Asset Management, VRT, Boise Area - FY2022

Key # : 19763

COMPASS PM:

Federal PM:

Requesting Agency: Valley Regional Transit

Transportation Infrastructure

Project Year: 2022

Total Previous Expenditures: \$0

Total Programmed Cost: \$1,511

Total Cost (Prev. + Prog.): \$1,511

Project Description : Fund capital projects identified in the Transit Asset Management Plan in FY2022 in the Boise Urbanized Area.



Funding Source STP-TMA			Program Local Hwy - Transportation Management Area					Local Match 7.34%	
Cost Year*	Preliminary Engineering	Preliminary Engineering Consulting	Right-of-Way	Utilities	Construction Engineering	Construction	Total	Federal Share	Local Share
2022	0	0	0	0	0	1,511	1,511	1,400	111
Fund Totals:	\$0	\$0	\$0	\$0	\$0	\$1,511	\$1,511	\$1,400	\$111

*PD = Preliminary Development (projects with development activity but no programmed year of construction)

Sorted by Project Name
All Values in Thousands of Dollars

DRAFT

Page 64 of 69
Wednesday, May 15, 2019
1:14 PM

Transit Asset Management, VRT, Boise Area - FY2023

Key # : 19950

COMPASS PM:

Federal PM:

Requesting Agency: Valley Regional Transit

Transportation Infrastructure

Project Year: 2023

Total Previous Expenditures: \$0

Total Programmed Cost: \$1,480

Total Cost (Prev. + Prog.): \$1,480

Project Description : Fund capital projects identified in the Transit Asset Management Plan in FY2023 in the Boise Urbanized Area.



Funding Source STP-TMA			Program Local Hwy - Transportation Management Area					Local Match 7.34%	
Cost Year*	Preliminary Engineering	Preliminary Engineering Consulting	Right-of-Way	Utilities	Construction Engineering	Construction	Total	Federal Share	Local Share
2023	0	0	0	0	0	1,480	1,480	1,371	109
Fund Totals:	\$0	\$0	\$0	\$0	\$0	\$1,480	\$1,480	\$1,371	\$109

Transit Asset Management, VRT, Boise Area - FY2024

Key # : 20659

COMPASS PM:

Federal PM:

Requesting Agency: ACHD

Transportation Infrastructure

Project Year: 2024

Total Previous Expenditures: \$0

Total Programmed Cost: \$1,449

Total Cost (Prev. + Prog.): \$1,449

Project Description : Fund capital projects identified in the Transit Asset Management Plan in FY2024 in the Boise Urbanized Area.



Funding Source STP-TMA			Program Local Hwy - Transportation Management Area					Local Match 7.34%	
Cost Year*	Preliminary Engineering	Preliminary Engineering Consulting	Right-of-Way	Utilities	Construction Engineering	Construction	Total	Federal Share	Local Share
2024	0	0	0	0	0	1,449	1,449	1,343	106
Fund Totals:	\$0	\$0	\$0	\$0	\$0	\$1,449	\$1,449	\$1,343	\$106

Transit Asset Management, VRT, Boise Area - FY2025

Key # : 21903

COMPASS PM:

Federal PM:

Requesting Agency: Valley Regional Transit

Transportation Infrastructure

Project Year: 2025

Total Previous Expenditures: \$0

Total Programmed Cost: \$1,449

Total Cost (Prev. + Prog.): \$1,449

Project Description : Fund capital projects identified in the Transit Asset Management Plan in FY2025 in the Boise Urbanized Area.



Funding Source STP-TMA			Program Local Hwy - Transportation Management Area					Local Match 7.34%	
Cost Year*	Preliminary Engineering	Preliminary Engineering Consulting	Right-of-Way	Utilities	Construction Engineering	Construction	Total	Federal Share	Local Share
2025	0	0	0	0	0	1,449	1,449	1,343	106
Fund Totals:	\$0	\$0	\$0	\$0	\$0	\$1,449	\$1,449	\$1,343	\$106

*PD = Preliminary Development (projects with development activity but no programmed year of construction)

Sorted by Project Name
All Values in Thousands of Dollars

Page 65 of 69
Wednesday, May 15, 2019
1:14 PM

DRAFT

Transit Asset Management, VRT, Boise Area - FY2026

Key # : ORN22393

COMPASS PM:

Federal PM:

Requesting Agency: Valley Regional Transit

Project Year: 2026

Total Previous Expenditures: \$0

Total Programmed Cost: \$1,449

Total Cost (Prev. + Prog.): \$1,449

Project Description : Fund capital projects identified in the Transit Asset Management Plan in FY2026 in the Boise Urbanized Area.



Funding Source STP-TMA			Program Local Hwy - Transportation Management Area					Local Match 7.34%	
Cost Year*	Preliminary Engineering	Preliminary Engineering Consulting	Right-of-Way	Utilities	Construction Engineering	Construction	Total	Federal Share	Local Share
2026	0	0	0	0	0	1,449	1,449	1,343	106
Fund Totals:	\$0	\$0	\$0	\$0	\$0	\$1,449	\$1,449	\$1,343	\$106

Transit Asset Management, VRT, Nampa Area - FY2020

Key # : 13906

COMPASS PM:

Federal PM:

Requesting Agency: Valley Regional Transit

Project Year: 2020

Total Previous Expenditures: \$0

Total Programmed Cost: \$159

Total Cost (Prev. + Prog.): \$159

Project Description : Fund capital projects identified in the Transit Asset Management Plan in FY2020 in the Nampa Urbanized Area.

Transportation Infrastructure



Funding Source STP-U			Program Local Hwy - Urban					Local Match 7.34%	
Cost Year*	Preliminary Engineering	Preliminary Engineering Consulting	Right-of-Way	Utilities	Construction Engineering	Construction	Total	Federal Share	Local Share
2020	0	0	0	0	0	159	159	147	12
Fund Totals:	\$0	\$0	\$0	\$0	\$0	\$159	\$159	\$147	\$12

US 20/26 (Chinden), I-84 to Middleton Road, Canyon County

Key #: 22165

COMPASS PM:

Federal PM:

Requesting Agency: ITD

Project Year: 2022

Total Previous Expenditures: \$225

Total Programmed Cost: \$34,300

Total Cost (Prev. + Prog.): \$34,525

Project Description : Widen US 20/26 (Chinden Boulevard) from I-84 to Middleton Road to six lanes in the City of Caldwell.



Funding Source		TECM		Program		State Hwy - Safety & Capacity (Capacity)		Local Match 100.00%	
Cost Year*	Preliminary Engineering	Preliminary Engineering Consulting	Right-of-Way	Utilities	Construction Engineering	Construction	Total	Federal Share	Local Share
2021	100	2,000	10,000	0	2,200	0	14,300	0	14,300
2022	0	0	0	0	0	20,000	20,000	0	20,000
Fund Totals:	\$100	\$2,000	\$10,000	\$0	\$2,200	\$20,000	\$34,300	\$0	\$34,300

US 20/26 (Chinden), Linder Road to Locust Grove, Meridian and Eagle

Key #: 20594

COMPASS PM:

Federal PM:

Requesting Agency: Private Developer

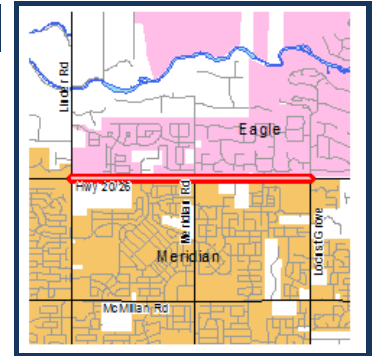
Project Year: 2020

Total Previous Expenditures: \$2,750

Total Programmed Cost: \$10,170

Total Cost (Prev. + Prog.): \$12,920

Project Description : Widen US 20/26 (Chinden Boulevard) from Linder Road to Locust Grove Road in the Cities of Meridian and Eagle. An additional lane in both directions will improve congestion issues. Work also includes improvements to existing intersections. Project is funded and constructed by a private developer using State Tax Anticipated Revenue (STAR) funds.



Funding Source		State		Program		State Forces		Local Match 100.00%	
Cost Year*	Preliminary Engineering	Preliminary Engineering Consulting	Right-of-Way	Utilities	Construction Engineering	Construction	Total	Federal Share	Local Share
2020	10	0	0	0	10	0	20	0	20
Fund Totals:	\$10	\$0	\$0	\$0	\$10	\$0	\$20	\$0	\$20

Funding Source		Local Participating		Program		Hwy - Local Partnerships		Local Match 100.00%	
Cost Year*	Preliminary Engineering	Preliminary Engineering Consulting	Right-of-Way	Utilities	Construction Engineering	Construction	Total	Federal Share	Local Share
2020	0	0	0	0	850	0	850	0	850
Fund Totals:	\$0	\$0	\$0	\$0	\$850	\$0	\$850	\$0	\$850

Funding Source		STAR		Program		Hwy - Local Partnerships		Local Match 100.00%	
Cost Year*	Preliminary Engineering	Preliminary Engineering Consulting	Right-of-Way	Utilities	Construction Engineering	Construction	Total	Federal Share	Local Share
2020	0	0	0	0	850	8,450	9,300	0	9,300
Fund Totals:	\$0	\$0	\$0	\$0	\$850	\$8,450	\$9,300	\$0	\$9,300

*PD = Preliminary Development (projects with development activity but no programmed year of construction)

Sorted by Project Name
All Values in Thousands of Dollars

Page 67 of 69
Wednesday, May 15, 2019
1:14 PM

DRAFT

US 20/26 (Chinden), Locust Grove Road to SH-55 (Eagle Road), Ada County

Key # : 19944

Requesting Agency: ITD

Project Year: 2020

Total Previous Expenditures: \$4,372

Total Programmed Cost: \$9,000

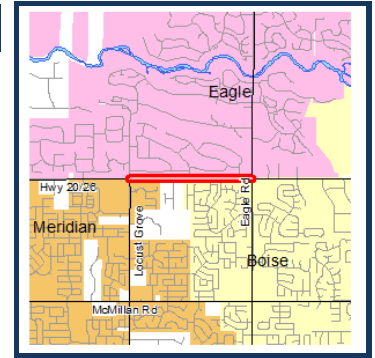
Total Cost (Prev. + Prog.): \$13,372

Project Description : Widen US 20/26 (Chinden Boulevard) between Locust Grove Road and SH-55 (Eagle Road) in the Cities of Boise, Eagle, and Meridian.

COMPASS PM:

Congestion Reduction/System Reliability
Freight Movement and Economic Vitality
Transportation Safety
Community Infrastructure

Federal PM:



Funding Source			Program					Local Match 100.00%	
Cost Year*	Preliminary Engineering	Preliminary Engineering Consulting	Right-of-Way	Utilities	Construction Engineering	Construction	Total	Federal Share	Local Share
2020	0	0	0	0	500	8,500	9,000	0	9,000
Fund Totals:	\$0	\$0	\$0	\$0	\$500	\$8,500	\$9,000	\$0	\$9,000

US 20/26 (Chinden), Phyllis Canal, Bridge Rehabilitation, near Meridian

Key # : 20227

Requesting Agency: ITD

Project Year: 2021

Total Previous Expenditures: \$650

Total Programmed Cost: \$2,825

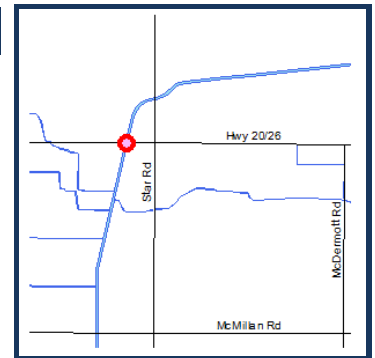
Total Cost (Prev. + Prog.): \$3,475

Project Description : Replace a culvert on US 20/26 (Chinden Boulevard) at the Phyllis Canal near the City of Meridian due to restrictions for freight.

COMPASS PM:

Transportation Safety
Freight Movement and Economic Vitality
Transportation Infrastructure
Farmland
Community Infrastructure

Federal PM:



Funding Source			Program					Local Match 7.34%	
Cost Year*	Preliminary Engineering	Preliminary Engineering Consulting	Right-of-Way	Utilities	Construction Engineering	Construction	Total	Federal Share	Local Share
2021	0	0	0	0	275	2,550	2,825	2,618	207
Fund Totals:	\$0	\$0	\$0	\$0	\$275	\$2,550	\$2,825	\$2,618	\$207

US 20/26 (Chinden), SH-16 to Linder Road, Ada County

Key # : 21858

Requesting Agency: Private Developer

Project Year: 2019-2020

Total Previous Expenditures: \$12,027

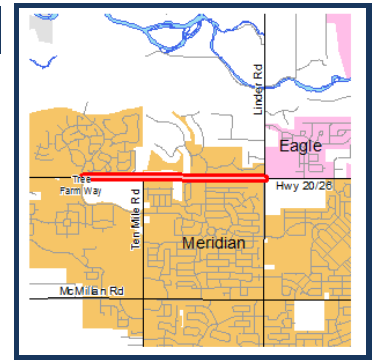
Total Programmed Cost: \$6,500

Total Cost (Prev. + Prog.): \$18,527

COMPASS PM:

Congestion Reduction/System Reliability
Freight Movement and Economic Vitality
Transportation Safety
Community Infrastructure

Federal PM:



Project Description : Widen US 20/26 (Chinden Boulevard) from Tree Farm Way to the existing five-lane section, approximately 700 feet to the west of Linder Road to five lanes (two through lanes in each direction and a two way left center turn lane). The project will include turn lanes and raised medians where necessary. Project funded and constructed by the developer of the Costco shopping center using State Tax Anticipated Revenue (STAR) financing.

Funding Source STAR			Program Hwy - Local Partnerships					Local Match 100.00%	
Cost Year*	Preliminary Engineering	Preliminary Engineering Consulting	Right-of-Way	Utilities	Construction Engineering	Construction	Total	Federal Share	Local Share
2020	0	0	0	0	0	6,500	6,500	0	6,500
Fund Totals:	\$0	\$0	\$0	\$0	\$0	\$6,500	\$6,500	\$0	\$6,500

US 20/26 (Chinden), Star Road to SH-16, Ada County

Key # : 20367

Requesting Agency: ITD

Project Year: 2023

Total Previous Expenditures: \$150

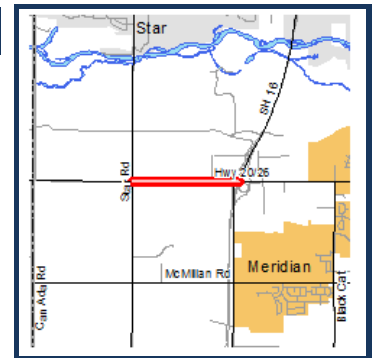
Total Programmed Cost: \$5,400

Total Cost (Prev. + Prog.): \$5,550

COMPASS PM:

Congestion Reduction/System Reliability
Freight Movement and Economic Vitality
Transportation Safety
Community Infrastructure

Federal PM:



Project Description : Widen US 20/26 (Chinden Boulevard) from Star Road to SH-16 in Ada County. The project will add one additional lane in both directions.

Funding Source HSIP			Program State Hwy - Safety & Capacity (Safety)					Local Match 7.34%	
Cost Year*	Preliminary Engineering	Preliminary Engineering Consulting	Right-of-Way	Utilities	Construction Engineering	Construction	Total	Federal Share	Local Share
2023	0	0	1,000	0	400	4,000	5,400	5,004	396
Fund Totals:	\$0	\$0	\$1,000	\$0	\$400	\$4,000	\$5,400	\$5,004	\$396

*PD = Preliminary Development (projects with development activity but no programmed year of construction)