

FY2020-2026 Regional Transportation Improvement Program

Detailed Project List (All Values in Thousands of Dollars)

All costs in current dollars



10th Avenue ITS and Overlay, Caldwell

Key # : 13905

Requesting Agency: City of Caldwell

Project Year: PD

Total Previous Expenditures: \$241

Total Programmed Cost: \$1,205

Total Cost (Prev. + Prog.): \$1,446

Project Description : Overlay a one-half mile section of 10th Avenue in downtown Caldwell from the railroad overpass to I-84. Install intelligent transportation system (ITS) components and bring pedestrian facilities to current standards.

COMPASS PM:

- Maintenance
- Freight Movement and Economic Vitality
- Environmental Sustainability
- Land Use
- Community Infrastructure

Federal PM:



Funding Source		STP-U		Program			Local Hwy - Urban		Local Match 7.34%	
Cost Year*	Preliminary Engineering	Preliminary Engineering Consulting	Right-of-Way	Utilities	Construction Engineering	Construction	Total	Federal Share	Local Share	
PD	0	0	0	0	154	1,051	1,205	1,117	88	
Fund Totals:	\$0	\$0	\$0	\$0	\$154	\$1,051	\$1,205	\$1,117	\$88	

*PD = Preliminary Development (projects with development activity but no programmed year of construction)

Bicycle and Pedestrian Bridge over North Channel of Boise River, Eagle

Key # : 20841

Requesting Agency: City of Eagle

Project Year: 2023

Total Previous Expenditures: \$257

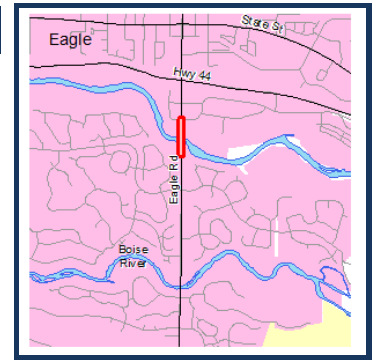
Total Programmed Cost: \$1,240

Total Cost (Prev. + Prog.): \$1,497

COMPASS PM:

- Community Infrastructure
- Health
- Open Space
- Transportation Safety
- Land Use

Federal PM:



Project Description : Design and construct a bicycle and pedestrian bridge over the north channel of the Boise River adjacent to the SH-55 (Eagle Road) Bridge. The bicycle and pedestrian bridge will provide critical link between the Boise River Greenbelt, planned pathways, and a rapidly growing residential and commercial core area in the City of Eagle.

Funding Source TAP-TMA			Program Local Hwy - Transportation Alternatives					Local Match 7.34%	
Cost Year*	Preliminary Engineering	Preliminary Engineering Consulting	Right-of-Way	Utilities	Construction Engineering	Construction	Total	Federal Share	Local Share
2020	0	0	10	0	0	0	10	9	1
2023	0	0	0	0	0	32	32	30	2
Fund Totals:	\$0	\$0	\$10	\$0	\$0	\$32	\$42	\$39	\$3

Funding Source Local Participating			Program Hwy - Local Partnerships					Local Match 100.00%	
Cost Year*	Preliminary Engineering	Preliminary Engineering Consulting	Right-of-Way	Utilities	Construction Engineering	Construction	Total	Federal Share	Local Share
2023	0	0	0	0	123	937	1,060	0	1,060
Fund Totals:	\$0	\$0	\$0	\$0	\$123	\$937	\$1,060	\$0	\$1,060

Funding Source STP-TMA			Program Local Hwy - Transportation Management Area					Local Match 7.34%	
Cost Year*	Preliminary Engineering	Preliminary Engineering Consulting	Right-of-Way	Utilities	Construction Engineering	Construction	Total	Federal Share	Local Share
2020	0	0	63	0	0	0	63	58	5
2023	0	0	0	0	0	75	75	69	6
Fund Totals:	\$0	\$0	\$63	\$0	\$0	\$75	\$138	\$128	\$10

*PD = Preliminary Development (projects with development activity but no programmed year of construction)

DRAFT

Capital Maintenance, Phase 1, Boise Area - FY2020

Key # : 18728

Requesting Agency: ACHD

Project Year: 2020

Total Previous Expenditures: \$527

Total Programmed Cost: \$5,276

Total Cost (Prev. + Prog.): \$5,803

Project Description : Supplement the local pavement preservation program to complete pavement improvements on federal-aid highways in the Boise Urbanized Area. Work includes improvements to meet Americans with Disabilities Act (ADA) requirements to adjoining sidewalks. Segments include: 13th Street, Alturas Street to Brumback Street; Beacon Light Road, SH-16 to Ballantyne Lane; Cole Road, Lake Hazel Rd to Latigo Drive; Edna Street, Five Mile Road to Patton Avenue; Floating Feather Road, Lanewood Road to Linder Road; Hill Road Parkway, Horseshoe Bend Road to Seamans Gulch Road; Horseshoe Bend Road, State Street to Cemetery Entrance; Locust Grove Road, Ustick Road to McMillan Road; Pine Street, Linder Road to Meridian Road; and Technology Way, Columbia Road to SH-21.

COMPASS PM:

Maintenance

Federal PM:



Funding Source		STP-TMA		Program					Local Hwy - Transportation Management Area		Local Match 7.34%	
Cost Year*	Preliminary Engineering	Preliminary Engineering Consulting	Right-of-Way	Utilities	Construction Engineering	Construction	Total	Federal Share	Local Share			
2020	0	0	0	0	688	4,588	5,276	4,889	387			
Fund Totals:	\$0	\$0	\$0	\$0	\$688	\$4,588	\$5,276	\$4,889	\$387			

Capital Maintenance, Phase 1, Boise Area - FY2021

Key # : 18701

Requesting Agency: ACHD

Project Year: 2021

Total Previous Expenditures: \$494

Total Programmed Cost: \$4,947

Total Cost (Prev. + Prog.): \$5,441

Project Description : Supplement the local pavement preservation program to complete pavement improvements on federal-aid highways in the Boise Urbanized Area. Work includes improvements to meet Americans with Disabilities Act (ADA) requirements to adjoining sidewalks. Segments include: Fairview Avenue, Maple Grove to Milwaukee Road; Curtis Road, Fairview Avenue to Ustick Road and Targee Street to Overland Road; Linden Street, Broadway Avenue to Gekeler Lane; Boise Avenue, Broadway Avenue to Gekeler Lane; and Pleasant Valley Road, Hollilynn Drive to Gowen Road.

COMPASS PM:

Maintenance

Federal PM:



Funding Source		STP-TMA		Program					Local Hwy - Transportation Management Area		Local Match 7.34%	
Cost Year*	Preliminary Engineering	Preliminary Engineering Consulting	Right-of-Way	Utilities	Construction Engineering	Construction	Total	Federal Share	Local Share			
2021	0	0	0	0	645	4,302	4,947	4,584	363			
Fund Totals:	\$0	\$0	\$0	\$0	\$645	\$4,302	\$4,947	\$4,584	\$363			

*PD = Preliminary Development (projects with development activity but no programmed year of construction)

Capital Maintenance, Phase 2, Boise Area - FY2020

Key # : 19887

Requesting Agency: ACHD

Project Year: 2020

Total Previous Expenditures: \$245

Total Programmed Cost: \$2,262

Total Cost (Prev. + Prog.): \$2,507

Project Description : Supplement the local pavement preservation program to complete pavement improvements on federal-aid highways in the Boise Urbanized Area. Work includes improvements to meet Americans with Disabilities Act (ADA) requirements to adjoining sidewalks. Segments include: Collister Drive, Quail Ridge Drive to North End and Gowen Road, Orchard Street to Broadway Avenue.

COMPASS PM:

Maintenance

Federal PM:



Funding Source		STP-TMA		Program				Local Hwy - Transportation Management Area		Local Match 7.34%	
Cost Year*	Preliminary Engineering	Preliminary Engineering Consulting	Right-of-Way	Utilities	Construction Engineering	Construction	Total	Federal Share	Local Share		
2020	0	0	0	0	295	1,967	2,262	2,096	166		
Fund Totals:	\$0	\$0	\$0	\$0	\$295	\$1,967	\$2,262	\$2,096	\$166		

Capital Maintenance, Phase 2, Boise Area - FY2021

Key # : 20129

Requesting Agency: ACHD

Project Year: 2021

Total Previous Expenditures: \$213

Total Programmed Cost: \$2,120

Total Cost (Prev. + Prog.): \$2,333

Project Description : Supplement the local pavement preservation program to complete pavement improvements on federal-aid highways in the Boise Urbanized Area. Work includes improvements to meet Americans with Disabilities Act (ADA) requirements to adjoining sidewalks. Segments include: Warm Springs Avenue, Starcrest Drive to Starview Drive; Warm Springs Avenue, Glacier Drive to SH-21; Edna Street, Five Mile Road to Patton Avenue; Grand Forest Drive, Gowen Road to Rock Rose Place; and Lake Forrest Drive, Federal Way to Summersweet Drive.

COMPASS PM:

Maintenance

Federal PM:



Funding Source		STP-TMA		Program				Local Hwy - Transportation Management Area		Local Match 7.34%	
Cost Year*	Preliminary Engineering	Preliminary Engineering Consulting	Right-of-Way	Utilities	Construction Engineering	Construction	Total	Federal Share	Local Share		
2021	0	0	0	0	276	1,844	2,120	1,964	156		
Fund Totals:	\$0	\$0	\$0	\$0	\$276	\$1,844	\$2,120	\$1,964	\$156		

*PD = Preliminary Development (projects with development activity but no programmed year of construction)

Capital Maintenance, Phase 3, Boise Area - FY2020

Key #: 19847

COMPASS PM:

Federal PM:

Requesting Agency: ACHD

Maintenance



Project Year: 2020

Total Previous Expenditures: \$62

Total Programmed Cost: \$300

Total Cost (Prev. + Prog.): \$362

Project Description : Supplement the local pavement preservation program to complete pavement improvements on federal-aid highways in the Boise Urbanized Area. Work includes improvements to meet Americans with Disabilities Act (ADA) requirements to adjoining sidewalks. Segments include: Owyhee Street from Cherry Lane to Overland Road.

Funding Source		Local Participating		Program			Hwy - Local Partnerships		Local Match 100.00%	
Cost Year*	Preliminary Engineering	Preliminary Engineering Consulting	Right-of-Way	Utilities	Construction Engineering	Construction	Total	Federal Share	Local Share	
2020	0	0	0	0	0	7	7	0	7	
Fund Totals:	\$0	\$0	\$0	\$0	\$0	\$7	\$7	\$0	\$7	

Funding Source		STP-TMA		Program			Local Hwy - Transportation Management Area		Local Match 7.34%	
Cost Year*	Preliminary Engineering	Preliminary Engineering Consulting	Right-of-Way	Utilities	Construction Engineering	Construction	Total	Federal Share	Local Share	
2020	0		0		39	254	293	271	22	
Fund Totals:	\$0	\$0	\$0	\$0	\$39	\$254	\$293	\$271	\$22	

Capital Maintenance, Phase 3, Boise Area - FY2021

Key #: 20159

COMPASS PM:

Federal PM:

Requesting Agency: ACHD

Maintenance



Project Year: 2021

Total Previous Expenditures: \$91

Total Programmed Cost: \$300

Total Cost (Prev. + Prog.): \$391

Project Description : Supplement the local pavement preservation program to complete pavement improvements on federal-aid highways in the Boise Urbanized Area. Work includes improvements to meet Americans with Disabilities Act (ADA) requirements to adjoining sidewalks. Segments include: 8th Street from Pine Avenue to Cherry Lane.

Funding Source		Local Participating		Program			Hwy - Local Partnerships		Local Match 100.00%	
Cost Year*	Preliminary Engineering	Preliminary Engineering Consulting	Right-of-Way	Utilities	Construction Engineering	Construction	Total	Federal Share	Local Share	
2021	0	0	0	0	0	144	144	0	144	
Fund Totals:	\$0	\$0	\$0	\$0	\$0	\$144	\$144	\$0	\$144	

Funding Source		STP-TMA		Program			Local Hwy - Transportation Management Area		Local Match 7.34%	
Cost Year*	Preliminary Engineering	Preliminary Engineering Consulting	Right-of-Way	Utilities	Construction Engineering	Construction	Total	Federal Share	Local Share	
2021	0	0	0	0	39	117	156	145	11	
Fund Totals:	\$0	\$0	\$0	\$0	\$39	\$117	\$156	\$145	\$11	

*PD = Preliminary Development (projects with development activity but no programmed year of construction)

Centennial Way Roundabout, Caldwell

Key # : 13484

Requesting Agency: City of Caldwell

Project Year: 2023

Total Previous Expenditures: \$422

Total Programmed Cost: \$2,936

Total Cost (Prev. + Prog.): \$3,358

Project Description : Replace a six-legged intersection at SH-19 (Simplot Boulevard) and I-84B (Centennial Way, Cleveland Boulevard and Blaine Street) with a roundabout intersection in the City of Caldwell.

COMPASS PM:

Freight Movement and Economic Vitality
 Transportation Safety
 Housing
 Congestion Reduction/System Reliability
 Community Infrastructure

Federal PM:



Funding Source		STP-U	Program					Local Hwy - Urban		Local Match 7.34%	
Cost Year*	Preliminary Engineering	Preliminary Engineering Consulting	Right-of-Way	Utilities	Construction Engineering	Construction	Total	Federal Share	Local Share		
2020	0	0	40	0	0	0	40	37	3		
2023	0	0	0	0	462	2,434	2,896	2,683	213		
Fund Totals:	\$0	\$0	\$40	\$0	\$462	\$2,434	\$2,936	\$2,720	\$216		

Cherry Lane, 11th Avenue North to Idaho Center Boulevard, Nampa

Key # : ORN22438

Requesting Agency: City of Nampa

Project Year: PD

Total Previous Expenditures: \$0

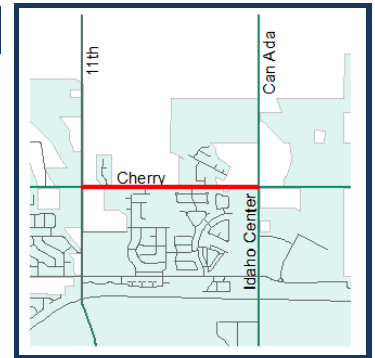
Total Programmed Cost: \$1,302

Total Cost (Prev. + Prog.): \$1,302

Project Description : Rebuild Cherry Lane between 11th Avenue North and Idaho Center Boulevard in the City of Nampa.

COMPASS PM:

Federal PM:



Funding Source		STP-U	Program					Local Hwy - Urban		Local Match 7.34%	
Cost Year*	Preliminary Engineering	Preliminary Engineering Consulting	Right-of-Way	Utilities	Construction Engineering	Construction	Total	Federal Share	Local Share		
PD	43	128	0	0	185	946	1,302	1,206	96		
Fund Totals:	\$43	\$128	\$0	\$0	\$185	\$946	\$1,302	\$1,206	\$96		

*PD = Preliminary Development (projects with development activity but no programmed year of construction)

Cherry Lane, Franklin Boulevard to 11th Avenue North, Rebuild, Nampa

Key # : 22017

Requesting Agency: City of Nampa

Project Year: PD

Total Previous Expenditures: \$0

Total Programmed Cost: \$1,349

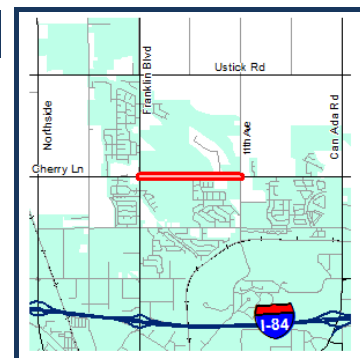
Total Cost (Prev. + Prog.): \$1,349

Project Description : Rebuild Cherry Lane from 11th Avenue North to Franklin Boulevard in the City of Nampa.

COMPASS PM:

Maintenance
Farmland

Federal PM:



Funding Source		STP-U		Program			Local Hwy - Urban		Local Match 7.34%	
Cost Year*	Preliminary Engineering	Preliminary Engineering Consulting	Right-of-Way	Utilities	Construction Engineering	Construction	Total	Federal Share	Local Share	
2022	25	175	0	0	0	0	200	185	15	
PD	0	0	0	0	314	835	1,149	1,065	84	
Fund Totals:	\$25	\$175	\$0	\$0	\$314	\$835	\$1,349	\$1,250	\$99	

Cole Road, I-84 to Franklin Road, Boise

Key # : IN203-14

Requesting Agency: ACHD

Project Year: 2019-2020

Total Previous Expenditures: \$7,785

Total Programmed Cost: \$730

Total Cost (Prev. + Prog.): \$8,515

Project Description : Widen Cole Road from I-84 to Franklin Road in the City of Boise (formerly KN RD207-16). Project also includes intersection improvements at Cole Road and Franklin Road to seven lanes in all directions. Project will also realign the Cole Road and McMullen Road intersection, reconstruction/widening of a bridge, and improving the existing railroad crossing.

COMPASS PM:

Housing
Congestion Reduction/System Reliability
Transportation Safety
Freight Movement and Economic Vitality
Community Infrastructure

Federal PM:



Funding Source		Local (Regionally Significant)		Program			Hwy - Local Partnerships		Local Match 100.00%	
Cost Year*	Preliminary Engineering	Preliminary Engineering Consulting	Right-of-Way	Utilities	Construction Engineering	Construction	Total	Federal Share	Local Share	
2020	0	0	0	0	8	722	730	0	730	
Fund Totals:	\$0	\$0	\$0	\$0	\$8	\$722	\$730	\$0	\$730	

*PD = Preliminary Development (projects with development activity but no programmed year of construction)

Cole Road, McGlochlin Street to Victory Road, Boise

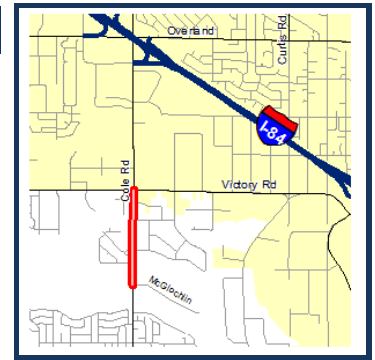
Key # : IN205-97

Requesting Agency: ACHD
Project Year: 2020
Total Previous Expenditures: \$2,136
Total Programmed Cost: \$7,498
Total Cost (Prev. + Prog.): \$9,634

COMPASS PM:

Congestion Reduction/System Reliability
 Housing
 Transportation Safety
 Community Infrastructure

Federal PM:



Project Description : Widen Cole Road from McGlochlin Street to Victory Road in the City of Boise to five lanes with median U-turns. Project also includes intersection improvements at Cole Road and Victory Road to seven lanes in each direction. Project includes widening of a bridge, and an enhanced pedestrian crossing at Cole Road and Diamond Street.

Funding Source Local (Regionally Significant) Program Hwy - Local Partnerships								Local Match 100.00%	
Cost Year*	Preliminary Engineering	Preliminary Engineering Consulting	Right-of-Way	Utilities	Construction Engineering	Construction	Total	Federal Share	Local Share
2020	0	0	0	25	66	7,407	7,498	0	7,498
Fund Totals:	\$0	\$0	\$0	\$25	\$66	\$7,407	\$7,498	\$0	\$7,498

Colorado and Holly, Signal and Pedestrian Improvements, Nampa

Key # : 13486

Requesting Agency: City of Nampa
Project Year: 2020
Total Previous Expenditures: \$176
Total Programmed Cost: \$1,391
Total Cost (Prev. + Prog.): \$1,567

COMPASS PM:

Transportation Safety
 Congestion Reduction/System Reliability
 Environmental Sustainability
 Health
 Community Infrastructure

Federal PM:



Project Description : Install traffic signals and pedestrian-friendly improvements at the intersection of Colorado Avenue and Holly Street in the City of Nampa.

Funding Source STP-U Program Local Hwy - Urban								Local Match 7.34%	
Cost Year*	Preliminary Engineering	Preliminary Engineering Consulting	Right-of-Way	Utilities	Construction Engineering	Construction	Total	Federal Share	Local Share
2020	0	0	0	0	217	1,114	1,331	1,233	98
Fund Totals:	\$0	\$0	\$0	\$0	\$217	\$1,114	\$1,331	\$1,233	\$98

Funding Source Local Participating Program Hwy - Local Partnerships								Local Match 100.00%	
Cost Year*	Preliminary Engineering	Preliminary Engineering Consulting	Right-of-Way	Utilities	Construction Engineering	Construction	Total	Federal Share	Local Share
2020	0	0	0	60	0	0	60	0	60
Fund Totals:	\$0	\$0	\$0	\$60	\$0	\$0	\$60	\$0	\$60

*PD = Preliminary Development (projects with development activity but no programmed year of construction)

Commuteride, ACHD

Key #: CPA3

COMPASS PM:

Federal PM:

Requesting Agency: ACHD

Support

Project Year: 2020-2025

Total Previous Expenditures: \$0

Total Programmed Cost: \$1,650

Total Cost (Prev. + Prog.): \$1,650

Project Description : Continue and improve rideshare program and marketing. Operate a third-party vanpool program in multi-county area and coordinate vanpools in the Boise and Nampa Urbanized Areas. These projects tie to ITD key numbers 19521, 20260, 20729, 22015, ORN22436, and ORN22386.



Funding Source		STP-U		Program			Local Hwy - Urban		Local Match 0.00%	
Cost Year*	Preliminary Engineering	Preliminary Engineering Consulting	Right-of-Way	Utilities	Construction Engineering	Construction	Total	Federal Share	Local Share	
2020	0	0	0	0	0	55	55	55	0	
2021	0	0	0	0	0	55	55	55	0	
2022	0	0	0	0	0	110	110	110	0	
2024	0	0	0	0	0	55	55	55	0	
2025	0	0	0	0	0	55	55	55	0	
Fund Totals:	\$0	\$0	\$0	\$0	\$0	\$330	\$330	\$330	\$0	

Funding Source		STP-TMA		Program			Local Hwy - Transportation Management Area		Local Match 0.00%	
Cost Year*	Preliminary Engineering	Preliminary Engineering Consulting	Right-of-Way	Utilities	Construction Engineering	Construction	Total	Federal Share	Local Share	
2020	0	0	0	0	0	220	220	220	0	
2021	0	0	0	0	0	220	220	220	0	
2022	0	0	0	0	0	220	220	220	0	
2023	0	0	0	0	0	220	220	220	0	
2024	0	0	0	0	0	220	220	220	0	
2025	0	0	0	0	0	220	220	220	0	
Fund Totals:	\$0	\$0	\$0	\$0	\$0	\$1,320	\$1,320	\$1,320	\$0	

Commuteride, Van Replacements, Canyon County - FY2019-2021

Key #: 20136a

COMPASS PM:

Federal PM:

Requesting Agency: ACHD

Transportation Infrastructure



Project Year: 2019-2021

Total Previous Expenditures: \$290

Total Programmed Cost: \$580

Total Cost (Prev. + Prog.): \$870

Project Description : Replace Commuteride vans in the Nampa Urbanized Area using funds for bus and bus facilities.



Funding Source		FTA 5339 SU		Program			Transit Capital		Local Match 20.00%	
Cost Year*	Preliminary Engineering	Preliminary Engineering Consulting	Right-of-Way	Utilities	Construction Engineering	Construction	Total	Federal Share	Local Share	
2020	0	0	0	0	0	290	290	232	58	
2021	0	0	0	0	0	290	290	232	58	
Fund Totals:	\$0	\$0	\$0	\$0	\$0	\$580	\$580	\$464	\$116	

*PD = Preliminary Development (projects with development activity but no programmed year of construction)

Cost Increase Set-Aside

Key # : 15001

COMPASS PM:

Federal PM:

Requesting Agency: COMPASS

Support

Project Year: 2020-2022

Total Previous Expenditures: \$0

Total Programmed Cost: \$32

Total Cost (Prev. + Prog.): \$32

Project Description : Set-aside for cost increases. Funds currently unprogrammed.



Funding Source		Program						Local Match 7.34%	
STP-TMA	Local Hwy - Transportation Management Area								
Cost Year*	Preliminary Engineering	Preliminary Engineering Consulting	Right-of-Way	Utilities	Construction Engineering	Construction	Total	Federal Share	Local Share
2020	0	0	0	0	0	14	14	13	1
2021	0	0	0	0	0	6	6	6	0
2022	0	0	0	0	0	12	12	11	1
Fund Totals:	\$0	\$0	\$0	\$0	\$0	\$32	\$32	\$30	\$2

Culvert Replacements, Canyon County

Key # : ORN22258

COMPASS PM:

Federal PM:

Requesting Agency: ITD

Transportation Safety

Project Year: 2021

Community Infrastructure

Total Previous Expenditures: \$0

Total Programmed Cost: \$188

Total Cost (Prev. + Prog.): \$188

Project Description : To update and replace deficient culverts on US 20/26 between Knott Road and Northside Boulevard (milepost 28.975) and east of Prescott Road (milepost 30.862) in Canyon County.



Funding Source		Program						Local Match 100.00%	
State	State Highway - Safety								
Cost Year*	Preliminary Engineering	Preliminary Engineering Consulting	Right-of-Way	Utilities	Construction Engineering	Construction	Total	Federal Share	Local Share
2020	15	0	0	0	0	0	15	0	15
2021	0	0	0	0	23	150	173	0	173
Fund Totals:	\$15	\$0	\$0	\$0	\$23	\$150	\$188	\$0	\$188

Eagle Road, Amity Road to Victory Road, Meridian

Key # : RD207-33

Requesting Agency: ACHD

Project Year: 2021

Total Previous Expenditures: \$320

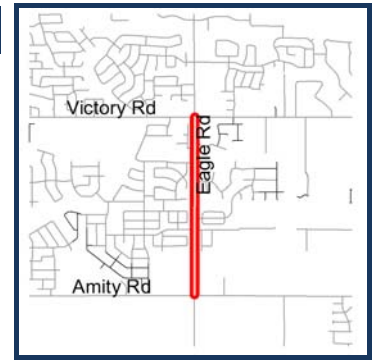
Total Programmed Cost: \$4,477

Total Cost (Prev. + Prog.): \$4,797

COMPASS PM:

Congestion Reduction/System Reliability
 Transportation Safety
 Housing
 Community Infrastructure
 Health

Federal PM:



Project Description : Widen Eagle Road from Amity Road to Victory Road in the City of Meridian to five lanes with curb-gutter, sidewalk, and level three bike lanes. Project includes enhanced pedestrian crossings at the pedestrian pathway near the Ten Mile Feeder canal.

Funding Source Local (Regionally Significant) Program Hwy - Local Partnerships								Local Match 100.00%	
Cost Year*	Preliminary Engineering	Preliminary Engineering Consulting	Right-of-Way	Utilities	Construction Engineering	Construction	Total	Federal Share	Local Share
2021	0	0	0	3	0	4,474	4,477	0	4,477
Fund Totals:	\$0	\$0	\$0	\$3	\$0	\$4,474	\$4,477	\$0	\$4,477

Eagle Road, Lake Hazel Road to Amity Road, Meridian

Key # : RD216-04

Requesting Agency: ACHD

Project Year: PD

Total Previous Expenditures: \$0

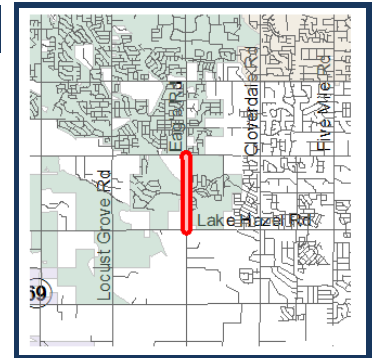
Total Programmed Cost: \$7,459

Total Cost (Prev. + Prog.): \$7,459

COMPASS PM:

Congestion Reduction/System Reliability

Federal PM:



Project Description : Widen Eagle Road from Lake Hazel Road to Amity Road in the City of Meridian to five lanes with curb, gutter, sidewalk and a Level 3 bike facility.

Funding Source Local (Regionally Significant) Program Hwy - Local Partnerships								Local Match 100.00%	
Cost Year*	Preliminary Engineering	Preliminary Engineering Consulting	Right-of-Way	Utilities	Construction Engineering	Construction	Total	Federal Share	Local Share
2022	0	778	0	0	0	0	778	0	778
2023	0	0	1,288	0	0	0	1,288	0	1,288
PD	0	0	0	129	45	5,219	5,393	0	5,393
Fund Totals:	\$0	\$778	\$1,288	\$129	\$45	\$5,219	\$7,459	\$0	\$7,459

*PD = Preliminary Development (projects with development activity but no programmed year of construction)

Franklin Boulevard and Karcher Road, Intersection Improvements, Nampa

Key # : 22102

Requesting Agency: City of Nampa

Project Year: 2022

Total Previous Expenditures: \$0

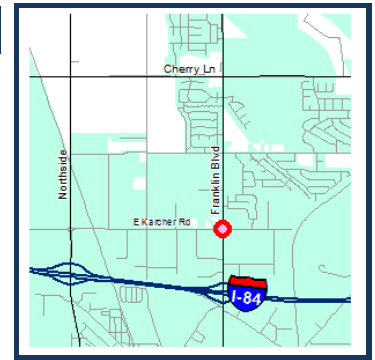
Total Programmed Cost: \$1,644

Total Cost (Prev. + Prog.): \$1,644

COMPASS PM:

Congestion Reduction/System Reliability
 Transportation Safety
 Community Infrastructure
 Freight Movement and Economic Vitality

Federal PM:



Project Description : Construct a dual lane offset roundabout at Franklin Boulevard and Karcher Road in the City of Nampa. The project includes right-of-way, curb and gutter, sidewalk, lighting, pedestrian ramps, and lane widening. The design includes a roundabout with one entering lane eastbound and westbound, and two entering lanes northbound and southbound. The offset center of the roundabout is approximately 55 feet west and 10 feet north of the existing intersection. A power pole will be relocated on the northeast corner at project expense (power pole is in a private easement outside of the right-of-way).

Funding Source		Freight		Program			State Hwy - Freight		Local Match 7.34%	
Cost Year*	Preliminary Engineering	Preliminary Engineering Consulting	Right-of-Way	Utilities	Construction Engineering	Construction	Total	Federal Share	Local Share	
2020	30	120	0	0	0	0	150	139	11	
2022	0	0	0	0	0	1,494	1,494	1,384	110	
Fund Totals:	\$30	\$120	\$0	\$0	\$0	\$1,494	\$1,644	\$1,523	\$121	

Franklin Boulevard, Freight Improvements near 3rd Avenue North, Nampa

Key # : 22103

Requesting Agency: City of Nampa

Project Year: 2022

Total Previous Expenditures: \$0

Total Programmed Cost: \$5,774

Total Cost (Prev. + Prog.): \$5,774

COMPASS PM:

Freight Movement and Economic Vitality
 Community Infrastructure
 Congestion Reduction/System Reliability
 Transportation Safety

Federal PM:



Project Description : Install a new signalized intersection approximately 1/4 mile south of the existing Franklin Boulevard and Industrial Road intersection in the City of Nampa. Work will include improvements to existing intersections at Franklin Boulevard and Industrial Road, closing Franklin Boulevard and 3rd Avenue North with cul-de-sacs, building a new local street east of Franklin Boulevard with a new structure at the Phyllis Canal crossing and a relocated at-grade rail crossing, building a new local street west of Franklin Boulevard requiring a new structure at the Mason Creek crossing, and improvements to 5th Avenue North. Access improvements along Franklin Boulevard (near Jacksons store) will be addressed to reduce conflict points.

Funding Source		Freight		Program			State Hwy - Freight		Local Match 7.34%	
Cost Year*	Preliminary Engineering	Preliminary Engineering Consulting	Right-of-Way	Utilities	Construction Engineering	Construction	Total	Federal Share	Local Share	
2020	50	450	0	0	0	0	500	463	37	
2022	0	0	0	0	0	5,274	5,274	4,887	387	
Fund Totals:	\$50	\$450	\$0	\$0	\$0	\$5,274	\$5,774	\$5,350	\$424	

*PD = Preliminary Development (projects with development activity but no programmed year of construction)

Greenhurst Road, Sunnybrook Drive to Canyon Street, Nampa

Key # : 21999

Requesting Agency: City of Nampa

Project Year: 2021

Total Previous Expenditures: \$142

Total Programmed Cost: \$979

Total Cost (Prev. + Prog.): \$1,121

Project Description : Provide safety improvements on Greenhurst Road from Sunnybrook Road to Canyon Street in the City of Nampa. The project will install a traffic control signal with pedestrian crossing facilities, a pedestrian-activated flashing beacon crossing light, street lighting, and a raised median to reduce or eliminate fatal and serious injury accidents for roadway users.

COMPASS PM:

Transportation Safety
Health
Environmental Sustainability
Community Infrastructure

Federal PM:



Funding Source		HSIP (Local)		Program			Local Hwy - HSIP		Local Match 7.34%	
Cost Year*	Preliminary Engineering	Preliminary Engineering Consulting	Right-of-Way	Utilities	Construction Engineering	Construction	Total	Federal Share	Local Share	
2021	0	0	0	0	165	814	979	907	72	
Fund Totals:	\$0	\$0	\$0	\$0	\$165	\$814	\$979	\$907	\$72	

Highway 30, Sand Hollow Road to SH-44, Canyon County

Key # : 19951

Requesting Agency: Canyon Highway District

Project Year: PD

Total Previous Expenditures: \$324

Total Programmed Cost: \$2,110

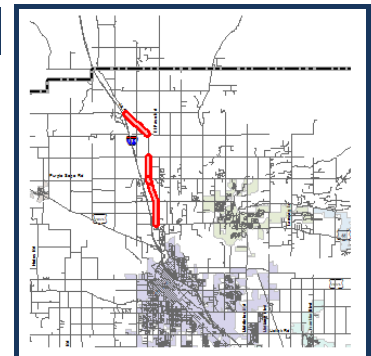
Total Cost (Prev. + Prog.): \$2,434

Project Description : Rehabilitate Old Highway 30 from SH-44 to Galloway Road and Goodson Road to south of Sand Hollow Road. Work also includes improvements to the intersections at Farmway Road and Goodson Road.

COMPASS PM:

Maintenance
Farmland

Federal PM:



Funding Source		STP-R		Program			Local Hwy - Rural		Local Match 7.34%	
Cost Year*	Preliminary Engineering	Preliminary Engineering Consulting	Right-of-Way	Utilities	Construction Engineering	Construction	Total	Federal Share	Local Share	
PD	0	0	0	0	487	1,623	2,110	1,955	155	
Fund Totals:	\$0	\$0	\$0	\$0	\$487	\$1,623	\$2,110	\$1,955	\$155	

*PD = Preliminary Development (projects with development activity but no programmed year of construction)

Holly Street/Northwest Nazarene University Roadway Reconfiguration, Nampa

Key # : 22132

Requesting Agency: City of Nampa

Project Year: PD

Total Previous Expenditures: \$0

Total Programmed Cost: \$429

Total Cost (Prev. + Prog.): \$429

COMPASS PM:

- Transportation Safety
- Land Use
- Health
- Congestion Reduction/System Reliability
- Environmental Sustainability

Federal PM:



Project Description : Reconfigure the four-lane Holly Street roadway section (Roosevelt Avenue to Colorado Avenue) to a three-lane section and add bicycle lanes to improve vehicle, bicycle, and pedestrian transportation safety issues along the Holly Street corridor adjacent to Northwest Nazarene University (NNU) in the City of Nampa. The project will also extend bicycle lanes from Roosevelt Avenue to Hawaii Avenue to the south, connecting existing bicycle lane facilities to the area.

Funding Source		STP-U	Program				Local Hwy - Urban			Local Match 7.34%	
Cost Year*	Preliminary Engineering	Preliminary Engineering Consulting	Right-of-Way	Utilities	Construction Engineering	Construction	Total	Federal Share	Local Share		
2022	21	43	0	0	0	0	64	59	5		
PD	0	0	0	0	53	275	328	304	24		
Fund Totals:	\$21	\$43	\$0	\$0	\$53	\$275	\$392	\$363	\$29		

Funding Source		Local Participating	Program				Hwy - Local Partnerships			Local Match 100.00%	
Cost Year*	Preliminary Engineering	Preliminary Engineering Consulting	Right-of-Way	Utilities	Construction Engineering	Construction	Total	Federal Share	Local Share		
2022	0	37	0	0	0	0	37	0	37		
Fund Totals:	\$0	\$37	\$0	\$0	\$0	\$0	\$37	\$0	\$37		

I-84, Broadway Avenue to Eisenman Road, Seal Coat, Boise

Key # : 20738

Requesting Agency: ITD

Project Year: 2021

Total Previous Expenditures: \$10

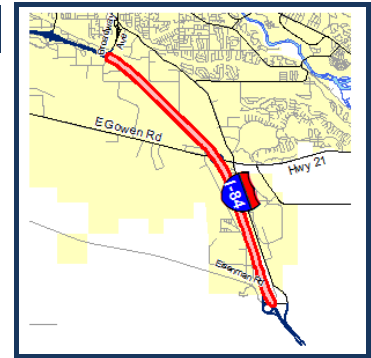
Total Programmed Cost: \$1,950

Total Cost (Prev. + Prog.): \$1,960

COMPASS PM:

- Maintenance
- Farmland

Federal PM:



Project Description : Seal coat the pavement surface on I-84 between Broadway Avenue and Eisenman Road in the City of Boise to improve ride quality and extend the life of the pavement.

Funding Source		IM	Program				State Hwy - Pavement Preservation			Local Match 7.73%	
Cost Year*	Preliminary Engineering	Preliminary Engineering Consulting	Right-of-Way	Utilities	Construction Engineering	Construction	Total	Federal Share	Local Share		
2020	40	0	0	0	0	0	40	37	3		
2021	0	0	0	0	127	1,783	1,910	1,762	148		
Fund Totals:	\$40	\$0	\$0	\$0	\$127	\$1,783	\$1,950	\$1,799	\$151		

*PD = Preliminary Development (projects with development activity but no programmed year of construction)

I-84, East Boise Port of Entry Ramps, Ada County

Key # : ORN22237

Requesting Agency: ITD

Project Year: 2020

Total Previous Expenditures: \$0

Total Programmed Cost: \$457

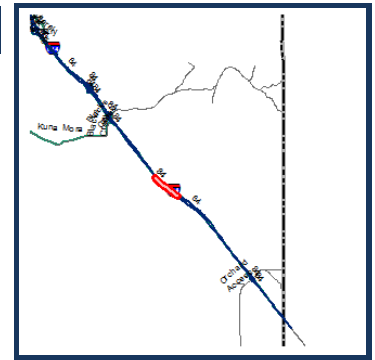
Total Cost (Prev. + Prog.): \$457

Project Description : Restore the pavement surface at the East Boise Port of Entry (weight station) ramps to extend the lifespan of the pavement. The project is located on the I-84 on and off ramps near milepost 66.

COMPASS PM:

Support

Federal PM:



Funding Source		Program						State Highway - Safety		Local Match 100.00%	
Cost Year*	Preliminary Engineering	Preliminary Engineering Consulting	Right-of-Way	Utilities	Construction Engineering	Construction	Total	Federal Share	Local Share		
2020	0	0	0	0	22	435	457	0	457		
Fund Totals:	\$0	\$0	\$0	\$0	\$22	\$435	\$457	\$0	\$457		

I-84, Eisenman Interchange to Mt. Home Interchange, Ada and Elmore

Key # : 20203

Requesting Agency: ITD

Project Year: 2020

Total Previous Expenditures: \$26

Total Programmed Cost: \$2,185

Total Cost (Prev. + Prog.): \$2,211

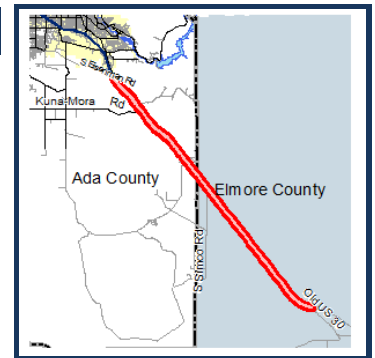
Project Description : Seal coat the pavement surface on I-84 between the Eisenman Interchange (milepost 60) in Ada County to the Mountain Home Interchange (milepost 90) in Elmore County to improve ride quality and extend the life of the pavement. (55% Ada County and 45% Elmore County)

COMPASS PM:

Maintenance

Farmland

Federal PM:



Funding Source		Program						State Hwy - Pavement Preservation		Local Match 7.73%	
Cost Year*	Preliminary Engineering	Preliminary Engineering Consulting	Right-of-Way	Utilities	Construction Engineering	Construction	Total	Federal Share	Local Share		
2020	0	0	0	0	104	2,081	2,185	2,016	169		
Fund Totals:	\$0	\$0	\$0	\$0	\$104	\$2,081	\$2,185	\$2,016	\$169		

*PD = Preliminary Development (projects with development activity but no programmed year of construction)

I-84, Franklin Interchange to Karcher Interchange, Canyon County

Key #: 22196

COMPASS PM:

Federal PM:

Requesting Agency: ITD
 Project Year: 2020-2021
 Total Previous Expenditures: \$11,200
 Total Programmed Cost: \$158,497
 Total Cost (Prev. + Prog.): \$169,697



Project Description : Design and construction on I-84 from the Franklin Interchange in the City of Caldwell to the Karcher Interchange in the City of Nampa in Canyon County. Construction will be split out once the phasing is determined.

Funding Source		State	Program					Hwy GARVEE - 2017	Legislative Authorization	Local Match 100.00%	
Cost Year*	Preliminary Engineering	Preliminary Engineering Consulting	Right-of-Way	Utilities	Construction Engineering	Construction	Construction	Total	Federal Share	Local Share	
2020	0	0	0	0	6,800	73,000	79,800	0	79,800		
2021	0	0	0	0	6,697	72,000	78,697	0	78,697		
Fund Totals:	\$0	\$0	\$0	\$0	\$13,497	\$145,000	\$158,497	\$0	\$158,497		

I-84, Garrity Interchange to Ten Mile Interchange, Canyon and Ada Counties

Key #: 20212

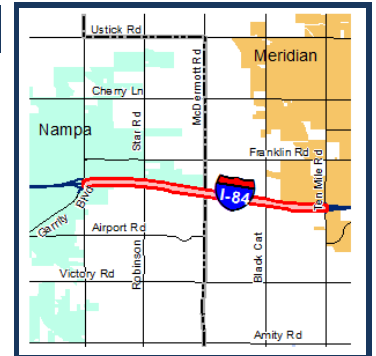
COMPASS PM:

Federal PM:

Requesting Agency: ITD
 Project Year: 2021
 Total Previous Expenditures: \$90
 Total Programmed Cost: \$4,381
 Total Cost (Prev. + Prog.): \$4,471

Maintenance

Project Description : Resurface the pavement on I-84 between the Garrity Interchange in the City of Nampa and the Ten Mile Interchange in the City of Meridian. This is a routine procedure to maintain the existing pavement.



Funding Source		IM	Program					State Hwy - Pavement Preservation	Local Match 7.73%	
Cost Year*	Preliminary Engineering	Preliminary Engineering Consulting	Right-of-Way	Utilities	Construction Engineering	Construction	Total	Federal Share	Local Share	
2021	0	0	0	0	224	4,157	4,381	4,042	339	
Fund Totals:	\$0	\$0	\$0	\$0	\$224	\$4,157	\$4,381	\$4,042	\$339	

*PD = Preliminary Development (projects with development activity but no programmed year of construction)

I-84, Interchange Ramp Rehabilitation, Boise

Key #: ORN22246

COMPASS PM:

Federal PM:

Requesting Agency: ITD

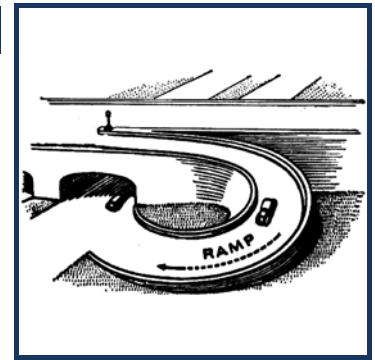
Project Year: 2020

Total Previous Expenditures: \$0

Total Programmed Cost: \$661

Total Cost (Prev. + Prog.): \$661

Project Description : Mill and Inlay pavement on interchange ramps in the Boise area to preserve the pavement.



Funding Source		IM Program State Hwy - Pavement Preservation						Local Match 7.73%	
Cost Year*	Preliminary Engineering	Preliminary Engineering Consulting	Right-of-Way	Utilities	Construction Engineering	Construction	Total	Federal Share	Local Share
2020	53	0	0	0	79	529	661	610	51
Fund Totals:	\$53	\$0	\$0	\$0	\$79	\$529	\$661	\$610	\$51

I-84, Middleton Road and Ustick Road Overpasses, Canyon County

Key #: 22154

COMPASS PM:

Federal PM:

Requesting Agency: ITD

Project Year: 2020

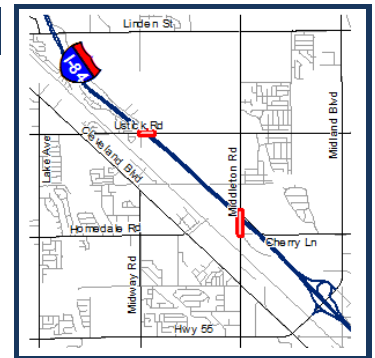
Total Previous Expenditures: \$3,100

Total Programmed Cost: \$14,700

Total Cost (Prev. + Prog.): \$17,800

Project Description : Rebuild Middleton Road and Ustick Road overpasses at I-84 in Canyon County. This project is part of the GARVEE project to expand I-84 from the City of Nampa to the City of Caldwell (Key Number 20351).

Congestion Reduction/System Reliability
Freight Movement and Economic Vitality
Transportation Safety
Community Infrastructure



Funding Source		State Program State Hwy - Restoration						Local Match 100.00%	
Cost Year*	Preliminary Engineering	Preliminary Engineering Consulting	Right-of-Way	Utilities	Construction Engineering	Construction	Total	Federal Share	Local Share
2020	0	500	0	0	0	0	500	0	500
Fund Totals:	\$0	\$500	\$0	\$0	\$0	\$0	\$500	\$0	\$500

Funding Source		State Program Hwy GARVEE - 2017 Legislative Authorization						Local Match 100.00%	
Cost Year*	Preliminary Engineering	Preliminary Engineering Consulting	Right-of-Way	Utilities	Construction Engineering	Construction	Total	Federal Share	Local Share
2020	0	0	0	0	1,200	13,000	14,200	0	14,200
Fund Totals:	\$0	\$0	\$0	\$0	\$1,200	\$13,000	\$14,200	\$0	\$14,200

*PD = Preliminary Development (projects with development activity but no programmed year of construction)

I-84, Sand Hollow Interchange to Farmers Sebree Canal, Seal Coat, Canyon

Key # : 20060

Requesting Agency: ITD

Project Year: 2021

Total Previous Expenditures: \$16

Total Programmed Cost: \$1,400

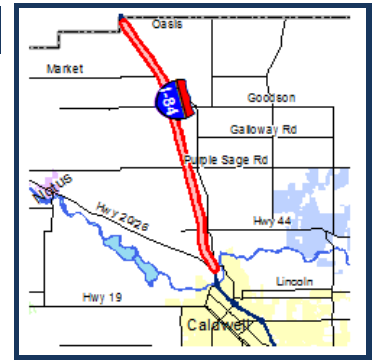
Total Cost (Prev. + Prog.): \$1,416

Project Description : Seal coat the pavement surface on I-84 from the Canyon County border to Farmers Sebree Canal (near the Parma exit). The project will improve ride quality and extend the life of the pavement.

COMPASS PM:

Maintenance
Farmland

Federal PM:



Funding Source		IM Program State Hwy - Pavement Preservation						Local Match 7.73%	
Cost Year*	Preliminary Engineering	Preliminary Engineering Consulting	Right-of-Way	Utilities	Construction Engineering	Construction	Total	Federal Share	Local Share
2021	0	0	0	0	100	1,300	1,400	1,292	108
Fund Totals:	\$0	\$0	\$0	\$0	\$100	\$1,300	\$1,400	\$1,292	\$108

I-84B, SH-19 to Homedale Road, Caldwell

Key # : 22508

Requesting Agency: ITD

Project Year: 2020

Total Previous Expenditures: \$0

Total Programmed Cost: \$2,340

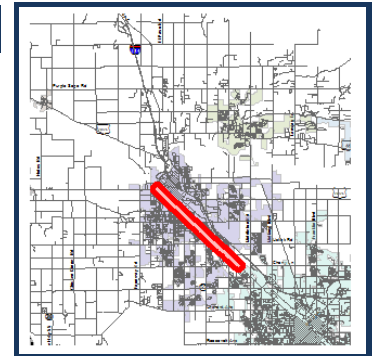
Total Cost (Prev. + Prog.): \$2,340

Project Description : Relinquish ownership of the segment of I-84B from SH-19 to Homedale Road from ITD to the City of Caldwell. The City, in taking ownership of this roadway segment, will accept the jurisdiction of and responsibility for, in full, the portion of existing roadway within the city limits.

COMPASS PM:

Support

Federal PM:



Funding Source		State Program State Hwy - System Support						Local Match 100.00%	
Cost Year*	Preliminary Engineering	Preliminary Engineering Consulting	Right-of-Way	Utilities	Construction Engineering	Construction	Total	Federal Share	Local Share
2020	0	0	0	0	2,340	0	2,340	0	2,340
Fund Totals:	\$0	\$0	\$0	\$0	\$2,340	\$0	\$2,340	\$0	\$2,340

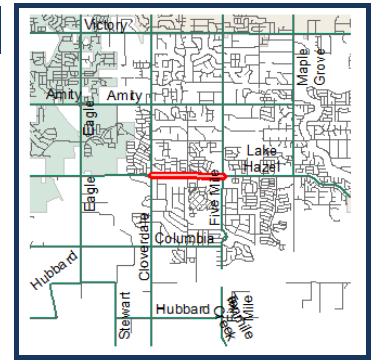
*PD = Preliminary Development (projects with development activity but no programmed year of construction)

Lake Hazel Road, Cloverdale Road to Five Mile Road, Ada County

Key #: RD207-29

COMPASS PM:

Federal PM:



Requesting Agency: ACHD

Project Year: PD

Total Previous Expenditures: \$0

Total Programmed Cost: \$8,080

Total Cost (Prev. + Prog.): \$8,080

Project Description : Widen Lake Hazel Road from Cloverdale Road to Five Mile Road in Ada County to five lanes with curb, gutter, and ten-foot multi-use pathways.

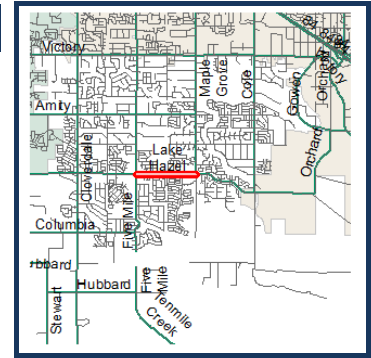
Funding Source Local (Regionally Significant) Program Hwy - Local Partnerships								Local Match 100.00%	
Cost Year*	Preliminary Engineering	Preliminary Engineering Consulting	Right-of-Way	Utilities	Construction Engineering	Construction	Total	Federal Share	Local Share
2023	0	896	0	0	0	0	896	0	896
PD	0	0	722	194	299	5,969	7,184	0	7,184
Fund Totals:	\$0	\$896	\$722	\$194	\$299	\$5,969	\$8,080	\$0	\$8,080

Lake Hazel Road, Five Mile Road to Maple Grove Road, Ada County

Key #: RD207-30

COMPASS PM:

Federal PM:



Requesting Agency: ACHD

Project Year: PD

Total Previous Expenditures: \$0

Total Programmed Cost: \$4,649

Total Cost (Prev. + Prog.): \$4,649

Project Description : Widen Lake Hazel Road from Five Mile Road to Maple Grove Road in Ada County to five lanes with curb, gutter, and ten-foot multi-use pathways.

Funding Source Local (Regionally Significant) Program Hwy - Local Partnerships								Local Match 100.00%	
Cost Year*	Preliminary Engineering	Preliminary Engineering Consulting	Right-of-Way	Utilities	Construction Engineering	Construction	Total	Federal Share	Local Share
PD	0	618	246	60	62	3,663	4,649	0	4,649
Fund Totals:	\$0	\$618	\$246	\$60	\$62	\$3,663	\$4,649	\$0	\$4,649

*PD = Preliminary Development (projects with development activity but no programmed year of construction)

Linder Road and Deer Flat Road Intersection, Kuna

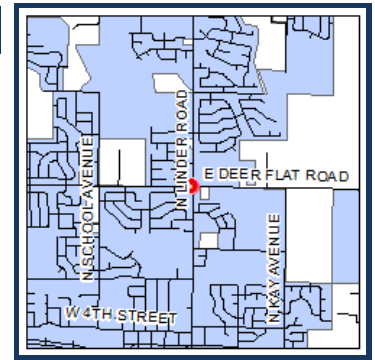
Key # : 13492

Requesting Agency: ACHD
Project Year: 2020
Total Previous Expenditures: \$1,173
Total Programmed Cost: \$3,340
Total Cost (Prev. + Prog.): \$4,513

COMPASS PM:

Housing
 Community Infrastructure
 Transportation Safety
 Health
 Farmland

Federal PM:



Funding Source		STP-U		Program				Local Hwy - Urban		Local Match 7.34%	
Cost Year*	Preliminary Engineering	Preliminary Engineering Consulting	Right-of-Way	Utilities	Construction Engineering	Construction	Total	Federal Share	Local Share		
2020	0	0	0	0	481	2,859	3,340	3,095	245		
Fund Totals:	\$0	\$0	\$0	\$0	\$481	\$2,859	\$3,340	\$3,095	\$245		

Linder Road, Cayuse Creek Drive to US 20/26 (Chinden Boulevard), Meridian

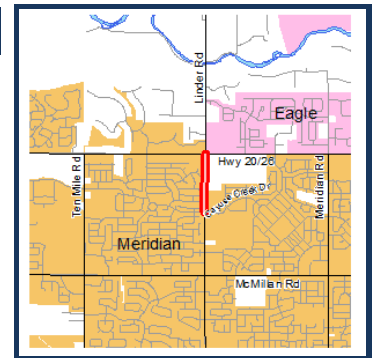
Key # : RD202-17

Requesting Agency: ACHD
Project Year: 2019-2020
Total Previous Expenditures: \$521
Total Programmed Cost: \$53
Total Cost (Prev. + Prog.): \$574

COMPASS PM:

Congestion Reduction/System Reliability
 Transportation Safety
 Housing
 Community Infrastructure
 Health

Federal PM:



Funding Source		Local (Regionally Significant)		Program				Hwy - Non-Participating		Local Match 100.00%	
Cost Year*	Preliminary Engineering	Preliminary Engineering Consulting	Right-of-Way	Utilities	Construction Engineering	Construction	Total	Federal Share	Local Share		
2020	0	0	0	0	0	53	53	0	53		
Fund Totals:	\$0	\$0	\$0	\$0	\$0	\$53	\$53	\$0	\$53		

*PD = Preliminary Development (projects with development activity but no programmed year of construction)

Linder Road, Franklin Road to Pine Avenue, Meridian

Key # : RD213-16

Requesting Agency: ACHD

Project Year: 2020

Total Previous Expenditures: \$102

Total Programmed Cost: \$2,165

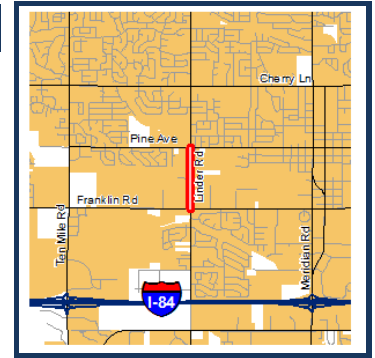
Total Cost (Prev. + Prog.): \$2,267

Project Description : Widen Linder Road between Franklin Road and Pine Avenue in the City of Meridian to five lanes, including curb, gutter, sidewalk, and bike lanes. Project includes upgrade of the railroad crossing and replacement and widening of a bridge structure.

COMPASS PM:

- Housing
- Transportation Safety
- Congestion Reduction/System Reliability
- Community Infrastructure
- Health

Federal PM:



Funding Source Local (Regionally Significant) Program Hwy - Local Partnerships								Local Match 100.00%	
Cost Year*	Preliminary Engineering	Preliminary Engineering Consulting	Right-of-Way	Utilities	Construction Engineering	Construction	Total	Federal Share	Local Share
2020	0	0	35	50	27	2,053	2,165	0	2,165
Fund Totals:	\$0	\$0	\$35	\$50	\$27	\$2,053	\$2,165	\$0	\$2,165

Linder Road, SH-44 (State Street) to Floating Feather Road, Eagle

Key # : RD209-28

Requesting Agency: ACHD

Project Year: PD

Total Previous Expenditures: \$0

Total Programmed Cost: \$6,706

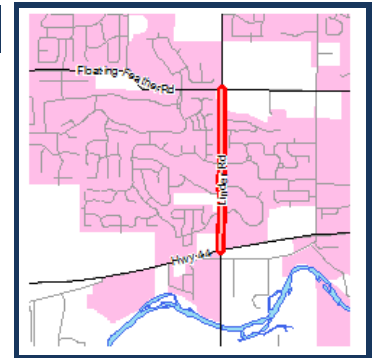
Total Cost (Prev. + Prog.): \$6,706

Project Description : Widen Linder Road from SH-44 (State Street) to Floating Feather Road in the City of Eagle to five lanes with curb, gutter, sidewalk, and bike lanes. Project includes construction of a multi-lane roundabout at Linder Road and Floating Feather Road (IN 217-03), two bridges, and an enhanced pedestrian crossing (pedestrian hybrid beacon) at Linder Road and Saguaro Drive.

COMPASS PM:

- Community Infrastructure
- Housing
- Congestion Reduction/System Reliability
- Transportation Safety
- Health

Federal PM:



Funding Source Local (Regionally Significant) Program Hwy - Non-Participating								Local Match 100.00%	
Cost Year*	Preliminary Engineering	Preliminary Engineering Consulting	Right-of-Way	Utilities	Construction Engineering	Construction	Total	Federal Share	Local Share
2022	0	465	5	0	0	0	470	0	470
2023	0	9	939	0	0	0	948	0	948
PD	0	0	0	0	0	5,288	5,288	0	5,288
Fund Totals:	\$0	\$474	\$944	\$0	\$0	\$5,288	\$6,706	\$0	\$6,706

*PD = Preliminary Development (projects with development activity but no programmed year of construction)

Linder Road, Ustick Road to McMillan Road, Meridian

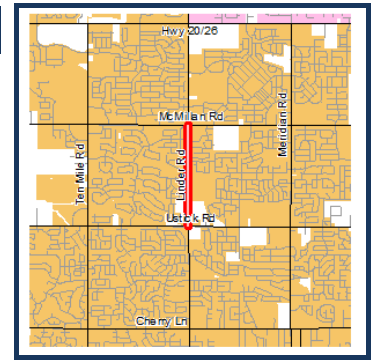
Key # : RD202-18

Requesting Agency: ACHD
Project Year: 2019-2020
Total Previous Expenditures: \$2,761
Total Programmed Cost: \$264
Total Cost (Prev. + Prog.): \$3,025

COMPASS PM:

Congestion Reduction/System Reliability
 Housing
 Transportation Safety
 Community Infrastructure
 Health

Federal PM:



Project Description : Widen Linder Road from Ustick Road to McMillan Road in the City of Meridian to five lanes with curb, gutter, sidewalk, and level two bike lanes.

Funding Source Local (Regionally Significant) Program Hwy - Local Partnerships								Local Match 100.00%	
Cost Year*	Preliminary Engineering	Preliminary Engineering Consulting	Right-of-Way	Utilities	Construction Engineering	Construction	Total	Federal Share	Local Share
2020	0	0	0	0	0	264	264	0	264
Fund Totals:	\$0	\$0	\$0	\$0	\$0	\$264	\$264	\$0	\$264

Lone Star Road and Middleton Road, Intersection Improvements, Nampa

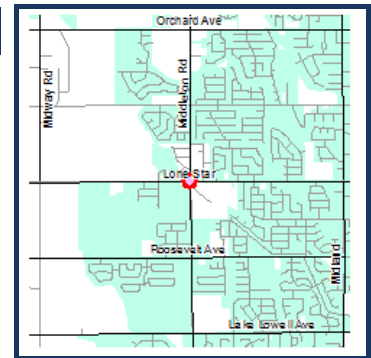
Key # : 20613

Requesting Agency: City of Nampa
Project Year: 2020
Total Previous Expenditures: \$230
Total Programmed Cost: \$1,285
Total Cost (Prev. + Prog.): \$1,515

COMPASS PM:

Transportation Safety
 Environmental Sustainability
 Community Infrastructure

Federal PM:



Project Description : Install a traffic signal and sidewalk at the intersection of Lone Star Road and Middleton Road in the City of Nampa.

Funding Source HSIP (Local) Program Local Hwy - HSIP							Local Match 7.34%		
Cost Year*	Preliminary Engineering	Preliminary Engineering Consulting	Right-of-Way	Utilities	Construction Engineering	Construction	Total	Federal Share	Local Share
2020	0	0	0	0	216	1,069	1,285	1,191	94
Fund Totals:	\$0	\$0	\$0	\$0	\$216	\$1,069	\$1,285	\$1,191	\$94

*PD = Preliminary Development (projects with development activity but no programmed year of construction)

Main Street, Avenue A to Avenue C, Kuna

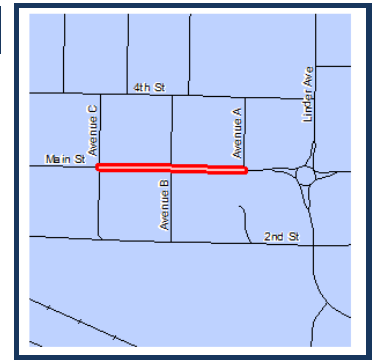
Key # : 20143

Requesting Agency: City of Kuna
Project Year: 2020-2021
Total Previous Expenditures: \$141
Total Programmed Cost: \$2,454
Total Cost (Prev. + Prog.): \$2,595

COMPASS PM:

Land Use
 Transportation Safety
 Environmental Sustainability
 Health
 Community Infrastructure

Federal PM:



Project Description : Extend streetscape improvements along Main Street from Avenue C to Avenue A in the City of Kuna. Improvements include roadway resurfacing, crosswalks, bulb-outs (pedestrian refuges) at the intersections, landscaping, decorative and functional lighting, benches, and bike racks.

Funding Source CDBG			Program Hwy - Local Partnerships					Local Match 100.00%	
Cost Year*	Preliminary Engineering	Preliminary Engineering Consulting	Right-of-Way	Utilities	Construction Engineering	Construction	Total	Federal Share	Local Share
2020	0	0	0	0	0	500	500	0	500
Fund Totals:	\$0	\$0	\$0	\$0	\$0	\$500	\$500	\$0	\$500

Funding Source TAP-TMA			Program Local Hwy - Transportation Alternatives					Local Match 7.34%	
Cost Year*	Preliminary Engineering	Preliminary Engineering Consulting	Right-of-Way	Utilities	Construction Engineering	Construction	Total	Federal Share	Local Share
2020	0	0	0	0	76	242	318	295	23
2021	0	0	0	0	0	78	78	72	6
Fund Totals:	\$0	\$0	\$0	\$0	\$76	\$320	\$396	\$367	\$29

Funding Source Local Participating			Program Hwy - Local Partnerships					Local Match 100.00%	
Cost Year*	Preliminary Engineering	Preliminary Engineering Consulting	Right-of-Way	Utilities	Construction Engineering	Construction	Total	Federal Share	Local Share
2020	0	0	0	0	142	154	296	0	296
Fund Totals:	\$0	\$0	\$0	\$0	\$142	\$154	\$296	\$0	\$296

Funding Source TAP-Urban			Program Local Hwy - Transportation Alternatives					Local Match 11.20%	
Cost Year*	Preliminary Engineering	Preliminary Engineering Consulting	Right-of-Way	Utilities	Construction Engineering	Construction	Total	Federal Share	Local Share
2020	0	0	0	0	0	562	562	499	63
Fund Totals:	\$0	\$0	\$0	\$0	\$0	\$562	\$562	\$499	\$63

Funding Source STP-TMA			Program Local Hwy - Transportation Management Area					Local Match 7.34%	
Cost Year*	Preliminary Engineering	Preliminary Engineering Consulting	Right-of-Way	Utilities	Construction Engineering	Construction	Total	Federal Share	Local Share
2020	0	0	0	0	0	700	700	649	51
Fund Totals:	\$0	\$0	\$0	\$0	\$0	\$700	\$700	\$649	\$51

*PD = Preliminary Development (projects with development activity but no programmed year of construction)

DRAFT

Microseals, Ada and Canyon Counties

Key # : 20536

Requesting Agency: ITD

Project Year: 2022

Total Previous Expenditures: \$75

Total Programmed Cost: \$7,803

Total Cost (Prev. + Prog.): \$7,878

Project Description : Microseal approximately 48 miles of arterial roadways in Ada and Canyon Counties to seal asphalt and preserve the road surface. Roadway segments include US 20/26 (Front/Myrtle) from 13th Street to Broadway Avenue; US 20/26 (Broadway Avenue) from Front to the south side of the Boise River Bridge and Boise River Bridge to Rossi Street; US 20/26 from east of Smeed Parkway to I-84; SH-44 (Glenwood Street) north of Riverside Drive to SH-44 (State Street); and SH-44, SH-16 to Glenwood Street.

COMPASS PM:

Maintenance
Farmland

Federal PM:



Funding Source		NHPP		Program				State Hwy - Pavement Preservation		Local Match 7.34%	
Cost Year*	Preliminary Engineering	Preliminary Engineering Consulting	Right-of-Way	Utilities	Construction Engineering	Construction	Construction	Total	Federal Share	Local Share	
2022	0	0	0	0	520	7,283		7,803	7,230	573	
Fund Totals:	\$0	\$0	\$0	\$0	\$520	\$7,283		\$7,803	\$7,230	\$573	

Middleton Road and Cornell Street, Intersection Improvements, Middleton

Key # : 20430

Requesting Agency: City of Middleton

Project Year: 2021

Total Previous Expenditures: \$0

Total Programmed Cost: \$303

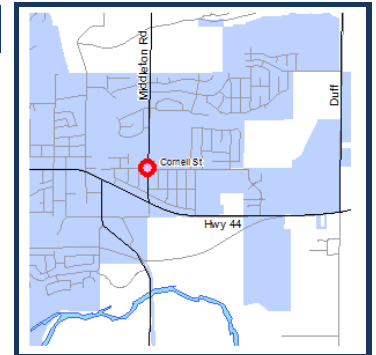
Total Cost (Prev. + Prog.): \$303

Project Description : Convert the intersection of Middleton Road and Cornell Street in the City of Middleton to a "mini-roundabout" to improve safety.

COMPASS PM:

Transportation Safety
Environmental Sustainability
Community Infrastructure
Farmland

Federal PM:



Funding Source		HSIP (Local)		Program				Local Hwy - HSIP		Local Match 7.34%	
Cost Year*	Preliminary Engineering	Preliminary Engineering Consulting	Right-of-Way	Utilities	Construction Engineering	Construction	Construction	Total	Federal Share	Local Share	
2020	12	40	0	0	0	0		52	48	4	
2021	0	0	0	0	44	207		251	233	18	
Fund Totals:	\$12	\$40	\$0	\$0	\$44	\$207		\$303	\$281	\$22	

*PD = Preliminary Development (projects with development activity but no programmed year of construction)

Middleton Road and Ustick Road, Roundabout, Caldwell

Key # : 13487

Requesting Agency: City of Caldwell

Project Year: 2024

Total Previous Expenditures: \$317

Total Programmed Cost: \$2,605

Total Cost (Prev. + Prog.): \$2,922

Project Description : Construct a roundabout to help traffic flow and congestion at the Middleton Road and Ustick Road intersection in the City of Caldwell.

COMPASS PM:

Congestion Reduction/System Reliability
 Freight Movement and Economic Vitality
 Transportation Safety
 Housing
 Farmland

Federal PM:



Funding Source		STP-U	Program				Local Hwy - Urban	Local Match 7.34%	
Cost Year*	Preliminary Engineering	Preliminary Engineering Consulting	Right-of-Way	Utilities	Construction Engineering	Construction	Total	Federal Share	Local Share
2021	0	0	560	11	0	0	571	529	42
2024	0		0		332	1,702	2,034	1,885	149
Fund Totals:	\$0	\$0	\$560	\$11	\$332	\$1,702	\$2,605	\$2,414	\$191

Midway Road, SH-55 (Karcher Road) to I-84B, Rehabilitation, Canyon County

Key # : 22016

Requesting Agency: Canyon Highway District
 City of Caldwell

Project Year: PD

Total Previous Expenditures: \$170

Total Programmed Cost: \$1,147

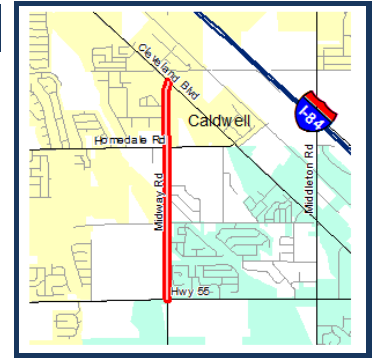
Total Cost (Prev. + Prog.): \$1,317

Project Description : Rehabilitate pavement and construct shared-use shoulders on Midway Road between SH-55 (Karcher Road) and I-84B (Caldwell Boulevard) in Canyon County.

COMPASS PM:

Maintenance
 Farmland

Federal PM:



Funding Source		STP-U	Program				Local Hwy - Urban	Local Match 7.34%	
Cost Year*	Preliminary Engineering	Preliminary Engineering Consulting	Right-of-Way	Utilities	Construction Engineering	Construction	Total	Federal Share	Local Share
PD	0	0	0	0	274	873	1,147	1,063	84
Fund Totals:	\$0	\$0	\$0	\$0	\$274	\$873	\$1,147	\$1,063	\$84

*PD = Preliminary Development (projects with development activity but no programmed year of construction)

Old Highway 30, Plymouth Street Bridge, Caldwell

Key # : 13494

Requesting Agency: Canyon Highway District
City of Caldwell

Project Year: 2023

Total Previous Expenditures: \$2,171

Total Programmed Cost: \$8,529

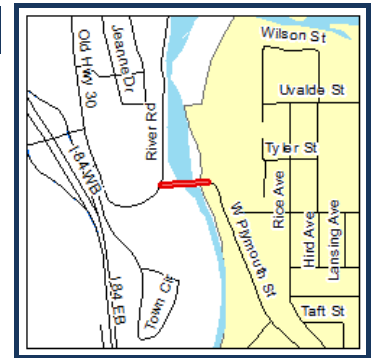
Total Cost (Prev. + Prog.): \$10,700

Project Description : Replace the Plymouth Street Bridge in the City of Caldwell with a new two-lane structure, leaving the existing bridge in place for use as a bicycle and pedestrian bridge.

COMPASS PM:

- Transportation Infrastructure
- Open Space
- Congestion Reduction/System Reliability
- Environmental Sustainability
- Community Infrastructure

Federal PM:



Funding Source		STP-U	Program				Local Hwy - Urban	Local Match 7.34%	
Cost Year*	Preliminary Engineering	Preliminary Engineering Consulting	Right-of-Way	Utilities	Construction Engineering	Construction	Total	Federal Share	Local Share
2021	0	0	171	0	0	0	171	158	13
2023	0	0	0	0	301	1,539	1,840	1,705	135
Fund Totals:	\$0	\$0	\$171	\$0	\$301	\$1,539	\$2,011	\$1,863	\$148

Funding Source		Bridge (Local)	Program				Local Hwy - Bridge	Local Match 7.34%	
Cost Year*	Preliminary Engineering	Preliminary Engineering Consulting	Right-of-Way	Utilities	Construction Engineering	Construction	Total	Federal Share	Local Share
2021	0	0	149	0	0	0	149	138	11
2023	0	0	0	0	830	5,539	6,369	5,902	467
Fund Totals:	\$0	\$0	\$149	\$0	\$830	\$5,539	\$6,518	\$6,040	\$478

Orchard Street, Gowen Road to I-84 On-Ramp, Boise

Key # : RD207-01

Requesting Agency: ACHD

Project Year: 2023

Total Previous Expenditures: \$150

Total Programmed Cost: \$5,916

Total Cost (Prev. + Prog.): \$6,066

Project Description : Realign and widen Orchard Street from Gowen Road to I-84 in the City of Boise to five lanes with curb, gutter, sidewalk, and bike lanes. Project includes reconstruction of the Gowen Road intersection as a multi-lane roundabout. Final alignment will be determined by the Orchard Alignment Study.

COMPASS PM:

- Congestion Reduction/System Reliability
- Transportation Safety
- Community Infrastructure
- Environmental Sustainability

Federal PM:



Funding Source		Local (Regionally Significant)	Program				Hwy - Local Partnerships	Local Match 100.00%	
Cost Year*	Preliminary Engineering	Preliminary Engineering Consulting	Right-of-Way	Utilities	Construction Engineering	Construction	Total	Federal Share	Local Share
2021	0	390	2	7	0	0	399	0	399
2022	0	0	840	0	0	0	840	0	840
2023	0	0	0	0	0	4,677	4,677	0	4,677
Fund Totals:	\$0	\$390	\$842	\$7	\$0	\$4,677	\$5,916	\$0	\$5,916

*PD = Preliminary Development (projects with development activity but no programmed year of construction)

Pathway, Fairview Avenue Greenbelt Ramp, Boise

Key # : 20639

Requesting Agency: City of Boise

Project Year: 2020

Total Previous Expenditures: \$54

Total Programmed Cost: \$161

Total Cost (Prev. + Prog.): \$215

COMPASS PM:

Health
Open Space
Transportation Safety
Community Infrastructure
Environmental Sustainability

Federal PM:



Project Description : Design and construct an Americans with Disabilities Act-compliant, concrete, multi-use pathway ramp connecting the south side of the Greenbelt to the existing bike lane on Fairview Avenue in the City of Boise. A small section of block retaining wall construction is anticipated.

Funding Source		TAP-TMA		Program				Local Hwy - Transportation Alternatives		Local Match 7.34%	
Cost Year*	Preliminary Engineering	Preliminary Engineering Consulting	Right-of-Way	Utilities	Construction Engineering	Construction	Total	Federal Share	Local Share		
2020	4	0	0	0	31	117	152	141	11		
Fund Totals:	\$4	\$0	\$0	\$0	\$31	\$117	\$152	\$141	\$11		

Funding Source		Local Participating		Program				Hwy - Local Partnerships		Local Match 100.00%	
Cost Year*	Preliminary Engineering	Preliminary Engineering Consulting	Right-of-Way	Utilities	Construction Engineering	Construction	Total	Federal Share	Local Share		
2020	0	0	0	0	0	9	9	0	9		
Fund Totals:	\$0	\$0	\$0	\$0	\$0	\$9	\$9	\$0	\$9		

Pathway, Greenbelt Completion, Boise State

Key # : ORN22385

Requesting Agency: Boise State University

Project Year: PD

Total Previous Expenditures: \$0

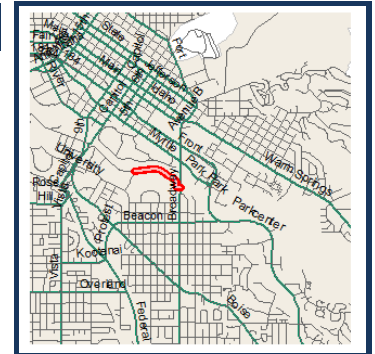
Total Programmed Cost: \$422

Total Cost (Prev. + Prog.): \$422

COMPASS PM:

Design and construct improvements to the Boise River Greenbelt along Cesar Chavez Road (south side of Boise River) between Theatre Lane and Broadway Avenue on the Boise State University campus. Improvements include widening the pathway from 8 feet to 12 feet and adding a well-defined landscaped buffer between the pathway and the street.

Federal PM:



Funding Source		TAP-TMA		Program				Local Hwy - Transportation Alternatives		Local Match 7.34%	
Cost Year*	Preliminary Engineering	Preliminary Engineering Consulting	Right-of-Way	Utilities	Construction Engineering	Construction	Total	Federal Share	Local Share		
2024	11	39	0	0	0	0	50	46	4		
PD	0	0	0	0	38	334	372	345	27		
Fund Totals:	\$11	\$39	\$0	\$0	\$38	\$334	\$422	\$391	\$31		

*PD = Preliminary Development (projects with development activity but no programmed year of construction)

Pathway, Grimes Pathway, Nampa

Key # : 22076

Requesting Agency: City of Nampa
Project Year: 2020
Total Previous Expenditures: \$0
Total Programmed Cost: \$264
Total Cost (Prev. + Prog.): \$264

COMPASS PM:

Community Infrastructure
 Health
 Open Space

Federal PM:



Project Description : Add two sections to the Grimes City Pathway in the City of Nampa. A new southern section would extend northeast from Karcher Road, to between McDonagh Park and the railroad tracks. A new northern section would connect to an existing pathway in Sunset Oaks part, then extend north to Birch Lane.

Funding Source		Program					Local Hwy - Transportation Alternatives		Local Match 7.34%	
Cost Year*	Preliminary Engineering	Preliminary Engineering Consulting	Right-of-Way	Utilities	Construction Engineering	Construction	Total	Federal Share	Local Share	
2020	0	0	0	0	0	264	264	245	19	
Fund Totals:	\$0	\$0	\$0	\$0	\$0	\$264	\$264	\$245	\$19	

Pathway, Rail with Trail, Meridian

Key # : 13918

Requesting Agency: City of Meridian
Project Year: 2022
Total Previous Expenditures: \$75
Total Programmed Cost: \$638
Total Cost (Prev. + Prog.): \$713

COMPASS PM:

Land Use
 Environmental Sustainability
 Open Space
 Transportation Safety
 Health

Federal PM:



Project Description : Construct a multi-use pathway in the City of Meridian parallel to the railroad tracks for approximately 1/2 mile west towards Linder Road from Meridian Road.

Funding Source		Program					Local Hwy - Transportation Alternatives		Local Match 7.34%	
Cost Year*	Preliminary Engineering	Preliminary Engineering Consulting	Right-of-Way	Utilities	Construction Engineering	Construction	Total	Federal Share	Local Share	
2022	0	0	0	0	46	336	382	354	28	
Fund Totals:	\$0	\$0	\$0	\$0	\$46	\$336	\$382	\$354	\$28	

Funding Source		Program					Local Match 100.00%		
Cost Year*	Preliminary Engineering	Preliminary Engineering Consulting	Right-of-Way	Utilities	Construction Engineering	Construction	Total	Federal Share	Local Share
2021	0	0	120	0	0	0	120	0	120
2022	0	0	0	0	0	136	136	0	136
Fund Totals:	\$0	\$0	\$120	\$0	\$0	\$136	\$256	\$0	\$256

*PD = Preliminary Development (projects with development activity but no programmed year of construction)

Pathway, Stoddard Pathway, Amity Avenue to Sherman Avenue, Nampa

Key # : 22070

Requesting Agency: City of Nampa

Project Year: 2021

Total Previous Expenditures: \$66

Total Programmed Cost: \$473

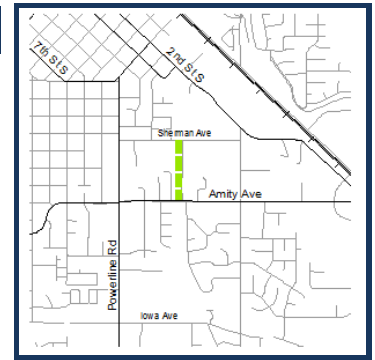
Total Cost (Prev. + Prog.): \$539

Project Description : Extend Stoddard Pathway from Amity Avenue to Sherman Avenue in southeast Nampa (Phase 2). The extension will provide a safe route to Sherman Elementary. Install a rapid flashing beacon at the Amity Avenue roadway crossing.

COMPASS PM:

- Community Infrastructure
- Health
- Open Space
- Environmental Sustainability
- Congestion Reduction/System Reliability

Federal PM:



Funding Source		TAP-Urban		Program				Local Hwy - Transportation Alternatives		Local Match 7.34%	
Cost Year*	Preliminary Engineering	Preliminary Engineering Consulting	Right-of-Way	Utilities	Construction Engineering	Construction	Total	Federal Share	Local Share		
2021	0	0	0	0	0	473	473	438	35		
Fund Totals:	\$0	\$0	\$0	\$0	\$0	\$473	\$473	\$438	\$35		

Pathway, Stoddard Pathway, Iowa Avenue to Amity Avenue, Nampa

Key # : 22050

Requesting Agency: City of Nampa

Project Year: 2020

Total Previous Expenditures: \$66

Total Programmed Cost: \$467

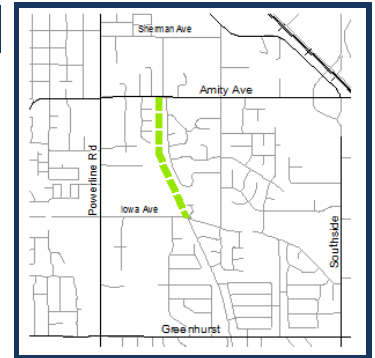
Total Cost (Prev. + Prog.): \$533

Project Description : Extend Stoddard Pathway .5 miles from Iowa Avenue to Amity Avenue in the City of Nampa (Phase 1).

COMPASS PM:

- Community Infrastructure
- Health
- Open Space
- Environmental Sustainability
- Congestion Reduction/System Reliability

Federal PM:



Funding Source		TAP-Urban		Program				Local Hwy - Transportation Alternatives		Local Match 7.34%	
Cost Year*	Preliminary Engineering	Preliminary Engineering Consulting	Right-of-Way	Utilities	Construction Engineering	Construction	Total	Federal Share	Local Share		
2020	0	0	0	0	0	467	467	433	34		
Fund Totals:	\$0	\$0	\$0	\$0	\$0	\$467	\$467	\$433	\$34		

*PD = Preliminary Development (projects with development activity but no programmed year of construction)

Pavement Preservation and ADA, Local, Boise Area – FY2022

Key # : 20006

COMPASS PM:

Federal PM:

Requesting Agency: ACHD

Maintenance



Project Year: 2022

Total Previous Expenditures: \$0

Total Programmed Cost: \$380

Total Cost (Prev. + Prog.): \$380

Project Description : Supplement the local pavement preservation program to complete pavement improvements on federal-aid highways in the Boise Urbanized Area. Work includes improvements to meet Americans with Disabilities Act (ADA) requirements to adjoining sidewalks. This project could convert to federal-aid if funds become available. Segments will be determined prior to the obligation in the design year.

Funding Source		Local Participating		Program Hwy - Local Partnerships			Local Match 100.00%		
Cost Year*	Preliminary Engineering	Preliminary Engineering Consulting	Right-of-Way	Utilities	Construction Engineering	Construction	Total	Federal Share	Local Share
2020	5	75	0	0	0	0	80	0	80
2022	0	0	0	0	0	300	300	0	300
Fund Totals:	\$5	\$75	\$0	\$0	\$0	\$300	\$380	\$0	\$380

Pavement Preservation and ADA, Local, Boise Area – FY2023

Key # : 20080

COMPASS PM:

Federal PM:

Requesting Agency: ACHD

Maintenance



Project Year: 2023

Total Previous Expenditures: \$0

Total Programmed Cost: \$380

Total Cost (Prev. + Prog.): \$380

Project Description : Supplement the local pavement preservation program to complete pavement improvements on federal-aid highways in the Boise Urbanized Area. Work includes improvements to meet Americans with Disabilities Act (ADA) requirements to adjoining sidewalks. This project could convert to federal-aid if funds become available. Segments will be determined prior to the obligation in the design year.

Funding Source		Local Participating		Program Hwy - Local Partnerships			Local Match 100.00%		
Cost Year*	Preliminary Engineering	Preliminary Engineering Consulting	Right-of-Way	Utilities	Construction Engineering	Construction	Total	Federal Share	Local Share
2021	5	75	0	0	0	0	80	0	80
2023	0	0	0	0	0	300	300	0	300
Fund Totals:	\$5	\$75	\$0	\$0	\$0	\$300	\$380	\$0	\$380

*PD = Preliminary Development (projects with development activity but no programmed year of construction)

Pavement Preservation and ADA, Local, Boise Area – FY2024

Key # : 20683

COMPASS PM:

Federal PM:

Requesting Agency: ACHD

Maintenance



Project Year: 2024

Total Previous Expenditures: \$0

Total Programmed Cost: \$380

Total Cost (Prev. + Prog.): \$380

Project Description : Supplement the local pavement preservation program to complete pavement improvements on federal-aid highways in the Boise Urbanized Area. Work includes improvements to meet Americans with Disabilities Act (ADA) requirements to adjoining sidewalks. This project could convert to federal-aid if funds become available. Segments will be determined prior to the obligation in the design year.

Funding Source		Local Participating		Program Hwy - Local Partnerships			Local Match 100.00%		
Cost Year*	Preliminary Engineering	Preliminary Engineering Consulting	Right-of-Way	Utilities	Construction Engineering	Construction	Total	Federal Share	Local Share
2022	5	75	0	0	0	0	80	0	80
2024	0	0	0	0	0	300	300	0	300
Fund Totals:	\$5	\$75	\$0	\$0	\$0	\$300	\$380	\$0	\$380

Pavement Preservation and ADA, Local, Boise Area – FY2025

Key # : 21902

COMPASS PM:

Federal PM:

Requesting Agency: ACHD

Maintenance



Project Year: 2025

Total Previous Expenditures: \$0

Total Programmed Cost: \$380

Total Cost (Prev. + Prog.): \$380

Project Description : Supplement the local pavement preservation program to complete pavement improvements on federal-aid highways in the Boise Urbanized Area. Work includes improvements to meet Americans with Disabilities Act (ADA) requirements to adjoining sidewalks. This project could convert to federal-aid if funds become available. Segments will be determined prior to the obligation in the design year.

Funding Source		Local Participating		Program Hwy - Local Partnerships			Local Match 100.00%		
Cost Year*	Preliminary Engineering	Preliminary Engineering Consulting	Right-of-Way	Utilities	Construction Engineering	Construction	Total	Federal Share	Local Share
2023	5	75	0	0	0	0	80	0	80
2025	0	0	0	0	0	300	300	0	300
Fund Totals:	\$5	\$75	\$0	\$0	\$0	\$300	\$380	\$0	\$380

*PD = Preliminary Development (projects with development activity but no programmed year of construction)

Pavement Preservation and ADA, Local, Boise Area – FY2026

Key # : ORN22392

COMPASS PM:

Federal PM:

Requesting Agency: ACHD

Maintenance



Project Year: 2026

Total Previous Expenditures: \$0

Total Programmed Cost: \$380

Total Cost (Prev. + Prog.): \$380

Project Description : Supplement the local pavement preservation program to complete pavement improvements on federal-aid highways in the Boise Urbanized Area. Work includes improvements to meet Americans with Disabilities Act (ADA) requirements to adjoining sidewalks. This project could convert to federal-aid if funds become available. Segments will be determined prior to the obligation in the design year.

Funding Source		Local Participating		Program				Hwy - Local Partnerships		Local Match	
Cost Year*	Preliminary Engineering	Preliminary Engineering Consulting	Right-of-Way	Utilities	Construction Engineering	Construction	Total	Federal Share	Local Share		
2024	5	75	0	0	0	0	80	80	0		
2026	0	0	0	0	0	300	300	300	0		
Fund Totals:	\$5	\$75	\$0	\$0	\$0	\$300	\$380	\$380	\$0		

Pavement Preservation and ADA, Phase 1, Boise Area – FY2022

Key # : 19465

COMPASS PM:

Federal PM:

Requesting Agency: ACHD

Maintenance



Project Year: 2022

Total Previous Expenditures: \$0

Total Programmed Cost: \$5,970

Total Cost (Prev. + Prog.): \$5,970

Project Description : Supplement the local pavement preservation program to complete pavement improvements on federal-aid highways in the Boise Urbanized Area. Work includes improvements to meet Americans with Disabilities Act (ADA) requirements to adjoining sidewalks. Segments will be determined prior to the obligation in the design year.

Funding Source		STP-TMA		Program				Local Hwy - Transportation Management Area		Local Match 7.34%	
Cost Year*	Preliminary Engineering	Preliminary Engineering Consulting	Right-of-Way	Utilities	Construction Engineering	Construction	Total	Federal Share	Local Share		
2020	20	523	0	0	0	0	543	503	40		
2022	0	0	0	0	708	4,719	5,427	5,029	398		
Fund Totals:	\$20	\$523	\$0	\$0	\$708	\$4,719	\$5,970	\$5,532	\$438		

*PD = Preliminary Development (projects with development activity but no programmed year of construction)

Pavement Preservation and ADA, Phase 1, Boise Area – FY2023

Key # : 20259

COMPASS PM:

Federal PM:

Requesting Agency: ACHD

Maintenance



Project Year: 2023

Total Previous Expenditures: \$0

Total Programmed Cost: \$5,820

Total Cost (Prev. + Prog.): \$5,820

Project Description : Supplement the local pavement preservation program to complete pavement improvements on federal-aid highways in the Boise Urbanized Area. Work includes improvements to meet Americans with Disabilities Act (ADA) requirements to adjoining sidewalks. Segments will be determined prior to the obligation in the design year.

Funding Source		STP-TMA		Program				Local Hwy - Transportation Management Area		Local Match 7.34%	
Cost Year*	Preliminary Engineering	Preliminary Engineering Consulting	Right-of-Way	Utilities	Construction Engineering	Construction	Total	Federal Share	Local Share		
2021	20	509	0	0	0	0	529	490	39		
2023	0	0	0	0	690	4,601	5,291	4,903	388		
Fund Totals:	\$20	\$509	\$0	\$0	\$690	\$4,601	\$5,820	\$5,393	\$427		

Pavement Preservation and ADA, Phase 1, Boise Area – FY2024

Key # : 20674

COMPASS PM:

Federal PM:

Requesting Agency: ACHD

Maintenance



Project Year: 2024

Total Previous Expenditures: \$0

Total Programmed Cost: \$5,579

Total Cost (Prev. + Prog.): \$5,579

Project Description : Supplement the local pavement preservation program to complete pavement improvements on federal-aid highways in the Boise Urbanized Area. Work includes improvements to meet Americans with Disabilities Act (ADA) requirements to adjoining sidewalks. Segments will be determined prior to the obligation in the design year.

Funding Source		STP-TMA		Program				Local Hwy - Transportation Management Area		Local Match 7.34%	
Cost Year*	Preliminary Engineering	Preliminary Engineering Consulting	Right-of-Way	Utilities	Construction Engineering	Construction	Total	Federal Share	Local Share		
2022	20	487	0	0	0	0	507	470	37		
2024	0	0	0	0	662	4,410	5,072	4,700	372		
Fund Totals:	\$20	\$487	\$0	\$0	\$662	\$4,410	\$5,579	\$5,170	\$409		

*PD = Preliminary Development (projects with development activity but no programmed year of construction)

Pavement Preservation and ADA, Phase 1, Boise Area – FY2025

Key # : 21896

COMPASS PM:

Federal PM:

Requesting Agency: ACHD

Maintenance

Project Year: 2025

Total Previous Expenditures: \$0

Total Programmed Cost: \$5,547

Total Cost (Prev. + Prog.): \$5,547

Project Description : Supplement the local pavement preservation program to complete pavement improvements on federal-aid highways in the Boise Urbanized Area. Work includes improvements to meet Americans with Disabilities Act (ADA) requirements to adjoining sidewalks. Segments will be determined prior to the obligation in the design year.



Funding Source		STP-TMA		Program				Local Hwy - Transportation Management Area		Local Match 7.34%	
Cost Year*	Preliminary Engineering	Preliminary Engineering Consulting	Right-of-Way	Utilities	Construction Engineering	Construction	Total	Federal Share	Local Share		
2023	20	484	0	0	0	0	504	467	37		
2025	0	0	0	0	658	4,385	5,043	4,673	370		
Fund Totals:	\$20	\$484	\$0	\$0	\$658	\$4,385	\$5,547	\$5,140	\$407		

Pavement Preservation and ADA, Phase 1, Boise Area – FY2026

Key # : ORN22390

COMPASS PM:

Federal PM:

Requesting Agency: ACHD

Maintenance



Project Year: 2026

Total Previous Expenditures: \$0

Total Programmed Cost: \$5,547

Total Cost (Prev. + Prog.): \$5,547

Project Description : Supplement the local pavement preservation program to complete pavement improvements on federal-aid highways in the Boise Urbanized Area. Work includes improvements to meet Americans with Disabilities Act (ADA) requirements to adjoining sidewalks. Segments will be determined prior to the obligation in the design year.



Funding Source		STP-TMA		Program				Local Hwy - Transportation Management Area		Local Match 7.34%	
Cost Year*	Preliminary Engineering	Preliminary Engineering Consulting	Right-of-Way	Utilities	Construction Engineering	Construction	Total	Federal Share	Local Share		
2024	20	484	0	0	0	0	504	467	37		
2026	0	0	0	0	658	4,385	5,043	4,673	370		
Fund Totals:	\$20	\$484	\$0	\$0	\$658	\$4,385	\$5,547	\$5,140	\$407		

*PD = Preliminary Development (projects with development activity but no programmed year of construction)

Pavement Preservation and ADA, Phase 2, Boise Area – FY2022

Key # : 20122

COMPASS PM:

Federal PM:

Requesting Agency: ACHD

Maintenance



Project Year: 2022

Total Previous Expenditures: \$0

Total Programmed Cost: \$2,559

Total Cost (Prev. + Prog.): \$2,559

Project Description : Supplement the local pavement preservation program to complete pavement improvements on federal-aid highways in the Boise Urbanized Area. Work includes improvements to meet Americans with Disabilities Act (ADA) requirements to adjoining sidewalks. Segments will be determined prior to the obligation in the design year.

Funding Source		STP-TMA		Program				Local Hwy - Transportation Management Area		Local Match 7.34%	
Cost Year*	Preliminary Engineering	Preliminary Engineering Consulting	Right-of-Way	Utilities	Construction Engineering	Construction	Total	Federal Share	Local Share		
2020	9	224	0	0	0	0	233	216	17		
2022	0	0	0	0	303	2,023	2,326	2,155	171		
Fund Totals:	\$9	\$224	\$0	\$0	\$303	\$2,023	\$2,559	\$2,371	\$188		

Pavement Preservation and ADA, Phase 2, Boise Area – FY2023

Key # : 19993

COMPASS PM:

Federal PM:

Requesting Agency: ACHD

Maintenance



Project Year: 2023

Total Previous Expenditures: \$0

Total Programmed Cost: \$2,495

Total Cost (Prev. + Prog.): \$2,495

Project Description : Supplement the local pavement preservation program to complete pavement improvements on federal-aid highways in the Boise Urbanized Area. Work includes improvements to meet Americans with Disabilities Act (ADA) requirements to adjoining sidewalks. Segments will be determined prior to the obligation in the design year.

Funding Source		STP-TMA		Program				Local Hwy - Transportation Management Area		Local Match 7.34%	
Cost Year*	Preliminary Engineering	Preliminary Engineering Consulting	Right-of-Way	Utilities	Construction Engineering	Construction	Total	Federal Share	Local Share		
2021	9	218	0	0	0	0	227	210	17		
2023	0	0	0	0	296	1,972	2,268	2,102	166		
Fund Totals:	\$9	\$218	\$0	\$0	\$296	\$1,972	\$2,495	\$2,312	\$183		

*PD = Preliminary Development (projects with development activity but no programmed year of construction)

Pavement Preservation and ADA, Phase 2, Boise Area – FY2024

Key # : 20538

COMPASS PM:

Federal PM:

Requesting Agency: ACHD

Maintenance



Project Year: 2024

Total Previous Expenditures: \$0

Total Programmed Cost: \$2,391

Total Cost (Prev. + Prog.): \$2,391

Project Description : Supplement the local pavement preservation program to complete pavement improvements on federal-aid highways in the Boise Urbanized Area. Work includes improvements to meet Americans with Disabilities Act (ADA) requirements to adjoining sidewalks. Segments will be determined prior to the obligation in the design year.

Funding Source		STP-TMA		Program				Local Hwy - Transportation Management Area		Local Match 7.34%	
Cost Year*	Preliminary Engineering	Preliminary Engineering Consulting	Right-of-Way	Utilities	Construction Engineering	Construction	Total	Federal Share	Local Share		
2022	9	208	0	0	0	0	217	201	16		
2024	0	0	0	0	284	1,890	2,174	2,014	160		
Fund Totals:	\$9	\$208	\$0	\$0	\$284	\$1,890	\$2,391	\$2,216	\$175		

Pavement Preservation and ADA, Phase 2, Boise Area – FY2025

Key # : 21898

COMPASS PM:

Federal PM:

Requesting Agency: ACHD

Maintenance



Project Year: 2025

Total Previous Expenditures: \$0

Total Programmed Cost: \$2,377

Total Cost (Prev. + Prog.): \$2,377

Project Description : Supplement the local pavement preservation program to complete pavement improvements on federal-aid highways in the Boise Urbanized Area. Work includes improvements to meet Americans with Disabilities Act (ADA) requirements to adjoining sidewalks. Segments will be determined prior to the obligation in the design year.

Funding Source		STP-TMA		Program				Local Hwy - Transportation Management Area		Local Match 7.34%	
Cost Year*	Preliminary Engineering	Preliminary Engineering Consulting	Right-of-Way	Utilities	Construction Engineering	Construction	Total	Federal Share	Local Share		
2023	9	207	0	0	0	0	216	200	16		
2025	0	0	0	0	282	1,879	2,161	2,002	159		
Fund Totals:	\$9	\$207	\$0	\$0	\$282	\$1,879	\$2,377	\$2,203	\$174		

*PD = Preliminary Development (projects with development activity but no programmed year of construction)

Pavement Preservation and ADA, Phase 2, Boise Area – FY2026

Key # : ORN22391

COMPASS PM:

Federal PM:

Requesting Agency: ACHD

Maintenance



Project Year: 2026

Total Previous Expenditures: \$0

Total Programmed Cost: \$2,377

Total Cost (Prev. + Prog.): \$2,377

Project Description : Supplement the local pavement preservation program to complete pavement improvements on federal-aid highways in the Boise Urbanized Area. Work includes improvements to meet Americans with Disabilities Act (ADA) requirements to adjoining sidewalks. Segments will be determined prior to the obligation in the design year.

Funding Source		STP-TMA		Program				Local Hwy - Transportation Management Area		Local Match 7.34%	
Cost Year*	Preliminary Engineering	Preliminary Engineering Consulting	Right-of-Way	Utilities	Construction Engineering	Construction	Total	Federal Share	Local Share		
2024	9	207	0	0	0	0	216	200	16		
2026	0	0	0	0	282	1,879	2,161	2,002	159		
Fund Totals:	\$9	\$207	\$0	\$0	\$282	\$1,879	\$2,377	\$2,203	\$174		

Peckham Road Intersections, Canyon County

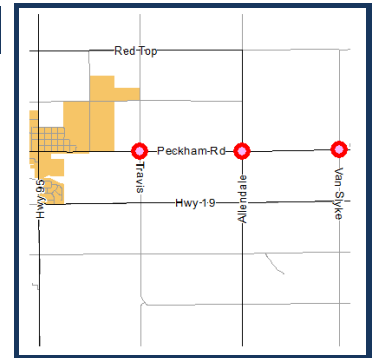
Key # : 22101

COMPASS PM:

Federal PM:

Requesting Agency: Golden Gate HD

Congestion Reduction/System Reliability
Farmland
Community Infrastructure
Freight Movement and Economic Vitality



Project Year: 2022

Total Previous Expenditures: \$0

Total Programmed Cost: \$399

Total Cost (Prev. + Prog.): \$399

Project Description : Reconstruct three intersections on Peckham Road at Travis Road, Allendale Road, and Van Slyke Road between the Cities of Wilder and Greenleaf in Canyon County. Each intersection is substandard for truck turning movements. The reconstruction will provide larger turning radii to eliminate truck off-tracking and reduce edge breakup. The intersection improvements will also allow trucks to maintain their own travel lane while making turns. All construction will adhere to current Association of Canyon County Highway District (ACCHD) standards.

Funding Source		Freight		Program				State Hwy - Freight		Local Match 7.34%	
Cost Year*	Preliminary Engineering	Preliminary Engineering Consulting	Right-of-Way	Utilities	Construction Engineering	Construction	Total	Federal Share	Local Share		
2020	5	30	0	0	0	0	35	32	3		
2022	0	0	0	0	0	364	364	337	27		
Fund Totals:	\$5	\$30	\$0	\$0	\$0	\$364	\$399	\$370	\$29		

*PD = Preliminary Development (projects with development activity but no programmed year of construction)

Peckham Road, US-95 to Notus Road, Canyon County

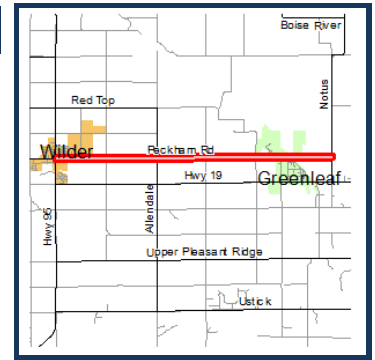
Key # : 13964

Requesting Agency: Golden Gate HD
Project Year: 2021
Total Previous Expenditures: \$625
Total Programmed Cost: \$3,095
Total Cost (Prev. + Prog.): \$3,720

COMPASS PM:

Environmental Sustainability
 Maintenance
 Farmland
 Transportation Safety
 Health

Federal PM:



Project Description : Provide improvements on Peckham Road from US-95 in the City of Wilder to Notus Road in the City of Greenleaf in Canyon County, including roadway rehabilitation as well as curb, gutter, and sidewalk improvements within the city limits.

Funding Source		STP-R	Program					Local Hwy - Rural		Local Match 7.34%	
Cost Year*	Preliminary Engineering	Preliminary Engineering Consulting	Right-of-Way	Utilities	Construction Engineering	Construction	Total	Federal Share	Local Share		
2021	0	0	0	0	695	2,400	3,095	2,868	227		
Fund Totals:	\$0	\$0	\$0	\$0	\$695	\$2,400	\$3,095	\$2,868	\$227		

Pedestrian Improvements and Widening, Montana Avenue, Caldwell

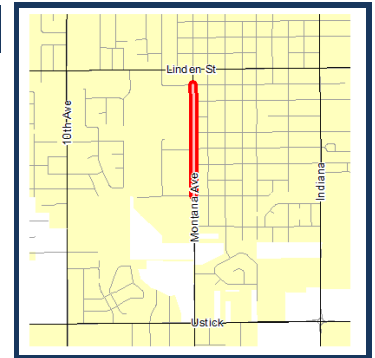
Key # : 22018

Requesting Agency: City of Caldwell
Project Year: PD
Total Previous Expenditures: \$0
Total Programmed Cost: \$647
Total Cost (Prev. + Prog.): \$647

COMPASS PM:

Community Infrastructure
 Health
 Open Space
 Transportation Safety
 Environmental Sustainability

Federal PM:



Project Description : Construct sidewalk from Syringa Middle School to Spruce Street on the West side of Montana Avenue in the City of Caldwell. Project includes a pedestrian crossings and rectangular rapid flashing beacons at the Alder Street and the Spruce Street intersections across Montana Avenue.

Funding Source		STP-U	Program					Local Hwy - Urban		Local Match 7.34%	
Cost Year*	Preliminary Engineering	Preliminary Engineering Consulting	Right-of-Way	Utilities	Construction Engineering	Construction	Total	Federal Share	Local Share		
2022	23	66	0	0	0	0	89	82	7		
PD	0	0	0	0	90	468	558	517	41		
Fund Totals:	\$23	\$66	\$0	\$0	\$90	\$468	\$647	\$600	\$47		

*PD = Preliminary Development (projects with development activity but no programmed year of construction)

Pedestrian Improvements, SH-55 (Eagle Road), Franklin to Pine, Meridian

Key # : 20542

Requesting Agency: City of Meridian

Project Year: PD

Total Previous Expenditures: \$0

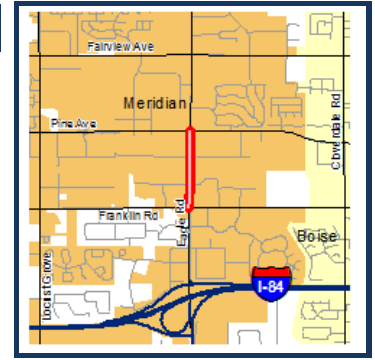
Total Programmed Cost: \$595

Total Cost (Prev. + Prog.): \$595

COMPASS PM:

- Health
- Congestion Reduction/System Reliability
- Transportation Safety
- Environmental Sustainability
- Community Infrastructure

Federal PM:



Project Description : Construct a lighted 10-foot-wide concrete multi-use pathway along the east side of SH-55 (Eagle Road) from Franklin Road to Pine Avenue in the City of Meridian. Reconstruct the existing sidewalk adjacent to the Shell gas station to the 10-foot width. The project will include an 8-foot separation between the roadway and pathway where possible.

Funding Source		TAP-TMA		Program			Local Hwy - Transportation Alternatives		Local Match 7.34%	
Cost Year*	Preliminary Engineering	Preliminary Engineering Consulting	Right-of-Way	Utilities	Construction Engineering	Construction	Total	Federal Share	Local Share	
2022	1	78	0	0	0	0	79	73	6	
2023	0	0	96	0	0	0	96	89	7	
PD	0	0	0	0	31	268	299	277	22	
Fund Totals:	\$1	\$78	\$96	\$0	\$31	\$268	\$474	\$439	\$35	

Funding Source		Local Participating		Program			Hwy - Local Partnerships		Local Match 100.00%	
Cost Year*	Preliminary Engineering	Preliminary Engineering Consulting	Right-of-Way	Utilities	Construction Engineering	Construction	Total	Federal Share	Local Share	
2022	10	0	0	0	0	0	10	0	10	
PD	0	0	0	0	0	9	9	0	9	
Fund Totals:	\$10	\$0	\$0	\$0	\$0	\$9	\$19	\$0	\$19	

Funding Source		STP-TMA		Program			Local Hwy - Transportation Management Area		Local Match 7.34%	
Cost Year*	Preliminary Engineering	Preliminary Engineering Consulting	Right-of-Way	Utilities	Construction Engineering	Construction	Total	Federal Share	Local Share	
PD	0	0	0	0	0	102	102	95	7	
Fund Totals:	\$0	\$0	\$0	\$0	\$0	\$102	\$102	\$95	\$7	

*PD = Preliminary Development (projects with development activity but no programmed year of construction)

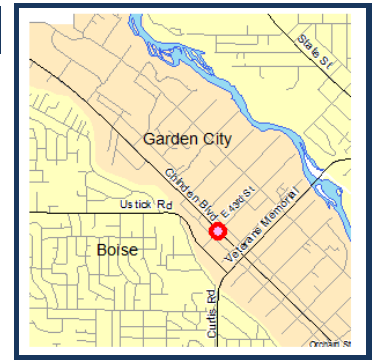
Pedestrian Improvements, US 20/26 (Chinden) at 43rd Street, Garden City

Key # : 20549

Requesting Agency: ACHD
Project Year: 2023
Total Previous Expenditures: \$0
Total Programmed Cost: \$215
Total Cost (Prev. + Prog.): \$215

COMPASS PM:
 Transportation Safety
 Environmental Sustainability
 Community Infrastructure

Federal PM:



Project Description : Install a pedestrian hybrid beacon controlled crossing on US 20/26 (Chinden Boulevard) at 43rd Street in the City of Garden City.

Funding Source		Program						Local Match 7.34%	
Cost Year*	Preliminary Engineering	Preliminary Engineering Consulting	Right-of-Way	Utilities	Construction Engineering	Construction	Total	Federal Share	Local Share
2021	8	48	0	0	0	0	56	52	4
2023	0	0	0	0	34	125	159	147	12
Fund Totals:	\$8	\$48	\$0	\$0	\$34	\$125	\$215	\$199	\$16

Planning and Mobility Implementation, Boise Area, VRT

Key # : 18854

Requesting Agency: Valley Regional Transit
Project Year: 2020-PD
Total Previous Expenditures: \$0
Total Programmed Cost: \$6,048
Total Cost (Prev. + Prog.): \$6,048

COMPASS PM:
 Support

Federal PM:



Project Description : Provide program support administration, short-range transit planning, and the implementation of mobility management programs for Valley Regional Transit in the Boise Urbanized Area. See Valley Regional Transit's Program of Projects for more details.

Funding Source		Program						Local Match 20.00%	
Cost Year*	Preliminary Engineering	Preliminary Engineering Consulting	Right-of-Way	Utilities	Construction Engineering	Construction	Total	Federal Share	Local Share
2020	0	0	0	0	0	1,008	1,008	806	202
2021	0	0	0	0	0	1,008	1,008	806	202
2022	0	0	0	0	0	1,008	1,008	806	202
2023	0	0	0	0	0	1,008	1,008	806	202
2024	0	0	0	0	0	1,008	1,008	806	202
PD	0	0	0	0	0	1,008	1,008	806	202
Fund Totals:	\$0	\$0	\$0	\$0	\$0	\$6,048	\$6,048	\$4,838	\$1,210

*PD = Preliminary Development (projects with development activity but no programmed year of construction)

Planning and Mobility Implementation, Nampa Area, VRT

Key #: 18842

COMPASS PM:

Federal PM:

Requesting Agency: Valley Regional Transit

Support

Project Year: 2020-PD

Total Previous Expenditures: \$0

Total Programmed Cost: \$2,268

Total Cost (Prev. + Prog.): \$2,268

Project Description : Provide program support administration, short-range transit planning and the implementation of a mobility management program in the Nampa Urbanized Area. See Valley Regional Transit's Program of Projects for more details.



Funding Source		FTA 5307 SU		Program				Transit Capital		Local Match 20.00%	
Cost Year*	Preliminary Engineering	Preliminary Engineering Consulting	Right-of-Way	Utilities	Construction Engineering	Construction	Total	Federal Share	Local Share		
2020	0	0	0	0	0	378	378	302	76		
2021	0	0	0	0	0	378	378	302	76		
2022	0	0	0	0	0	378	378	302	76		
2023	0	0	0	0	0	378	378	302	76		
2024	0	0	0	0	0	378	378	302	76		
PD	0	0	0	0	0	378	378	302	76		
Fund Totals:	\$0	\$0	\$0	\$0	\$0	\$2,268	\$2,268	\$1,814	\$454		

Planning, Communities in Motion Update, COMPASS

Key #: 19571

COMPASS PM:

Federal PM:

Requesting Agency: COMPASS

Support

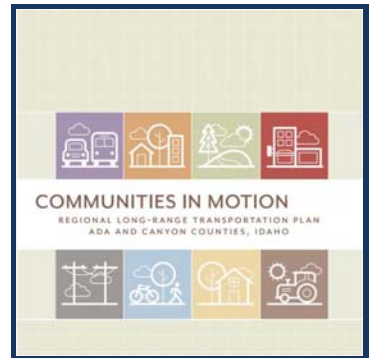
Project Year: 2019-2022

Total Previous Expenditures: \$50

Total Programmed Cost: \$212

Total Cost (Prev. + Prog.): \$262

Project Description : Update the regional long-range transportation plan. Includes: transportation/land use preference survey with focus groups, financial forecast assumptions review, growth scenario recalibration, public involvement, graphics and editing, and printing.



Funding Source		STP-TMA		Program				Local Hwy - Transportation Management Area		Local Match 7.34%	
Cost Year*	Preliminary Engineering	Preliminary Engineering Consulting	Right-of-Way	Utilities	Construction Engineering	Construction	Total	Federal Share	Local Share		
2020	0	87	0	0	0	0	87	81	6		
2021	0	53	0	0	0	0	53	49	4		
2022	0	72	0	0	0	0	72	67	5		
Fund Totals:	\$0	\$212	\$0	\$0	\$0	\$0	\$212	\$196	\$16		

*PD = Preliminary Development (projects with development activity but no programmed year of construction)

Planning, Communities in Motion Update, COMPASS

Key # : 20271

COMPASS PM:

Federal PM:

Requesting Agency: COMPASS

Support

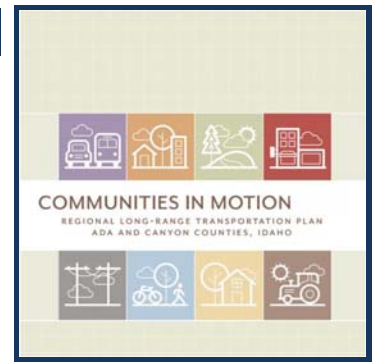
Project Year: 2023-2025

Total Previous Expenditures: \$0

Total Programmed Cost: \$309

Total Cost (Prev. + Prog.): \$309

Project Description : Update the regional long-range transportation plan. Includes Treasure Valley Transportation Operations, Management and ITS Plan Update; public involvement; graphics and editing; and printing.



Funding Source		Program						Local Match 7.34%	
STP-TMA	Local Hwy - Transportation Management Area								
Cost Year*	Preliminary Engineering	Preliminary Engineering Consulting	Right-of-Way	Utilities	Construction Engineering	Construction	Total	Federal Share	Local Share
2023	0	30	0	0	0	0	30	28	2
2024	0	248	0	0	0	0	248	230	18
2025	0	31	0	0	0	0	31	29	2
Fund Totals:	\$0	\$309	\$0	\$0	\$0	\$0	\$309	\$286	\$23

Planning, COMPASS

Key # : CPA1

COMPASS PM:

Federal PM:

Requesting Agency: COMPASS

Support

Project Year: 2020-2025

Total Previous Expenditures: \$0

Total Programmed Cost: \$1,986

Total Cost (Prev. + Prog.): \$1,986

Project Description : Assist COMPASS in meeting federal transportation planning responsibilities. These projects tie to ITD key numbers 19060, 19389, 19920, 20560, 21889, 19766, 20113, and ORN22387.



Funding Source		Program						Local Match 7.34%	
STP-U	Local Hwy - Urban								
Cost Year*	Preliminary Engineering	Preliminary Engineering Consulting	Right-of-Way	Utilities	Construction Engineering	Construction	Total	Federal Share	Local Share
2020	0	99	0	0	0	0	99	92	7
2021	0	99	0	0	0	0	99	92	7
2022	0	198	0	0	0	0	198	183	15
2024	0	99	0	0	0	0	99	92	7
2025	0	99	0	0	0	0	99	92	7
Fund Totals:	\$0	\$594	\$0	\$0	\$0	\$0	\$594	\$550	\$44

Funding Source		Program						Local Match 7.34%	
STP-TMA	Local Hwy - Transportation Management Area								
Cost Year*	Preliminary Engineering	Preliminary Engineering Consulting	Right-of-Way	Utilities	Construction Engineering	Construction	Total	Federal Share	Local Share
2020	0	232	0	0	0	0	232	215	17
2021	0	232	0	0	0	0	232	215	17
2022	0	232	0	0	0	0	232	215	17
2023	0	232	0	0	0	0	232	215	17
2024	0	232	0	0	0	0	232	215	17
2025	0	232	0	0	0	0	232	215	17
Fund Totals:	\$0	\$1,392	\$0	\$0	\$0	\$0	\$1,392	\$1,290	\$102

*PD = Preliminary Development (projects with development activity but no programmed year of construction)

Planning, High Capacity Corridor Alternatives Analysis, COMPASS

Key #: 13046

COMPASS PM:

Federal PM:

Requesting Agency: COMPASS

Support

Project Year: PD

Total Previous Expenditures: \$0

Total Programmed Cost: \$1,000

Total Cost (Prev. + Prog.): \$1,000

Project Description : Study to identify and analyze options to improve mobility in a priority corridor to be determined in the regional long-range transportation plan. The study will evaluate all reasonable public transportation alternatives.



Funding Source			Program					Local Match 7.34%	
STP-TMA	Local Hwy - Transportation Management Area							Federal Share	Local Share
Cost Year*	Preliminary Engineering	Preliminary Engineering Consulting	Right-of-Way	Utilities	Construction Engineering	Construction	Total		
PD	0	1,000	0	0	0	0	1,000	927	73
Fund Totals:	\$0	\$1,000	\$0	\$0	\$0	\$0	\$1,000	\$927	\$73

Planning, Metropolitan Planning Funds, COMPASS

Key #: CPA2

COMPASS PM:

Federal PM:

Requesting Agency: COMPASS

Support

Project Year: 2020-2024

Total Previous Expenditures: \$0

Total Programmed Cost: \$7,171

Total Cost (Prev. + Prog.): \$7,171

Project Description : Metropolitan planning organization (MPO) planning funds from the Federal Highway Administration and Federal Transit Administration. These projects tie to ITD key numbers 19144, 19258, 20050, 20640, 22108, and ORN22494.



Funding Source			Program					Local Match 7.34%	
FTA 5303	Transit Capital							Federal Share	Local Share
Cost Year*	Preliminary Engineering	Preliminary Engineering Consulting	Right-of-Way	Utilities	Construction Engineering	Construction	Total		
2020	0	294	0	0	0	0	294	272	22
2021	0	294	0	0	0	0	294	272	22
2022	0	294	0	0	0	0	294	272	22
2023	0	294	0	0	0	0	294	272	22
Fund Totals:	\$0	\$1,176	\$0	\$0	\$0	\$0	\$1,176	\$1,090	\$86

Funding Source			Program					Local Match 7.34%	
Metropolitan Planning	Hwy - Metropolitan Planning							Federal Share	Local Share
Cost Year*	Preliminary Engineering	Preliminary Engineering Consulting	Right-of-Way	Utilities	Construction Engineering	Construction	Total		
2020	0	1,199	0	0	0	0	1,199	1,111	88
2021	0	1,199	0	0	0	0	1,199	1,111	88
2022	0	1,199	0	0	0	0	1,199	1,111	88
2023	0	1,199	0	0	0	0	1,199	1,111	88
2024	0	1,199	0	0	0	0	1,199	1,111	88
Fund Totals:	\$0	\$5,995	\$0	\$0	\$0	\$0	\$5,995	\$5,555	\$440

*PD = Preliminary Development (projects with development activity but no programmed year of construction)

Planning, Travel Survey Data Collection, COMPASS

Key # : 19303

COMPASS PM:

Federal PM:

Requesting Agency: COMPASS

Support

Project Year: 2020-2021

Total Previous Expenditures: \$0

Total Programmed Cost: \$850

Total Cost (Prev. + Prog.): \$850

Project Description : Collect local travel data from households and bus riders to update and recalibrate the regional travel demand model.



Funding Source		Program						Local Match 7.34%		
Cost Year*	STP-TMA	Preliminary Engineering	Preliminary Engineering Consulting	Right-of-Way	Utilities	Construction Engineering	Construction	Total	Federal Share	Local Share
2020	0	150	0	0	0	0	0	150	139	11
2021	0	700	0	0	0	0	0	700	649	51
Fund Totals:	\$0	\$850	\$0	\$0	\$0	\$0	\$0	\$850	\$788	\$62

Railroad Crossing, Benjamin Lane, Boise

Key # : 20537

COMPASS PM:

Federal PM:

Requesting Agency: ACHD

Transportation Safety

Project Year: 2022

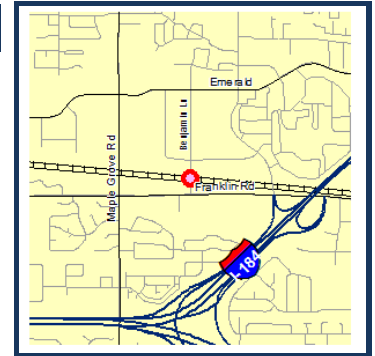
Community Infrastructure

Total Previous Expenditures: \$0

Total Programmed Cost: \$320

Total Cost (Prev. + Prog.): \$320

Project Description : Install crossing signal, including constant warning detection, at the Boise Valley Railroad crossing at Benjamin Lane in the City of Boise. Local match from State Rail Protection Account.



Funding Source		Program						Local Match 10.00%		
Cost Year*	Fed RRX	Preliminary Engineering	Preliminary Engineering Consulting	Right-of-Way	Utilities	Construction Engineering	Construction	Total	Federal Share	Local Share
2021	10	0	0	0	0	0	0	10	9	1
2022	0	0	0	0	0	0	310	310	279	31
Fund Totals:	\$10	\$0	\$0	\$0	\$0	\$0	\$310	\$320	\$288	\$32

*PD = Preliminary Development (projects with development activity but no programmed year of construction)

Railroad Crossing, Lemp Lane, Canyon County

Key # : 20358

Requesting Agency: Notus-Parma Highway District
Project Year: 2024

Total Previous Expenditures: \$0

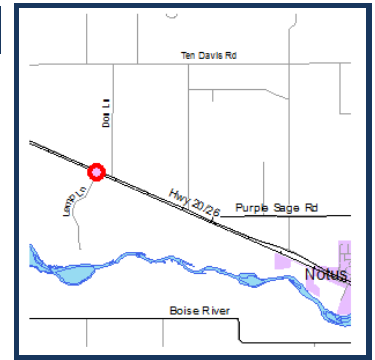
Total Programmed Cost: \$255

Total Cost (Prev. + Prog.): \$255

Project Description : Install signals and gates at the Union Pacific railroad crossing at Lemp Lane in Canyon County between the Cities of Parma and Notus. Local match from State Rail Protection Account.

COMPASS PM:
 Transportation Safety
 Farmland

Federal PM:

Funding Source		Program						Local Match 10.00%	
Cost Year*	Preliminary Engineering	Preliminary Engineering Consulting	Right-of-Way	Utilities	Construction Engineering	Construction	Total	Federal Share	Local Share
2024	5	0	0	0	0	250	255	230	26
Fund Totals:	\$5	\$0	\$0	\$0	\$0	\$250	\$255	\$230	\$26

Railroad Crossing, Look Lane, Caldwell

Key # : 20355

Requesting Agency: Notus-Parma Highway District
Project Year: 2020

Total Previous Expenditures: \$15

Total Programmed Cost: \$575

Total Cost (Prev. + Prog.): \$590

Project Description : Relocate and realign the Union Pacific Railroad crossing at Look Lane in the City of Caldwell. Work includes adding a signal, gates, planking and a cabinet for electronics. Local match from State Rail Protection Account.

COMPASS PM:
 Maintenance
 Transportation Safety
 Farmland

Federal PM:




Funding Source		Program						Local Match 10.00%	
Cost Year*	Preliminary Engineering	Preliminary Engineering Consulting	Right-of-Way	Utilities	Construction Engineering	Construction	Total	Federal Share	Local Share
2020	0	60	0	0	5	510	575	518	58
Fund Totals:	\$0	\$60	\$0	\$0	\$5	\$510	\$575	\$518	\$58

*PD = Preliminary Development (projects with development activity but no programmed year of construction)

Railroad Crossing, North Linder Road, Meridian

Key # : 19875

Requesting Agency: ACHD

Project Year: 2020

Total Previous Expenditures: \$15

Total Programmed Cost: \$510

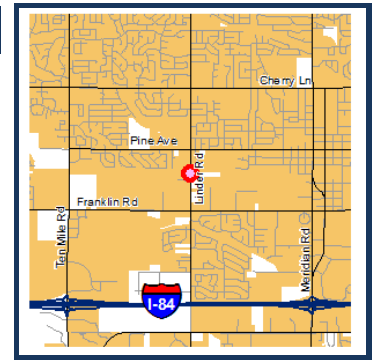
Total Cost (Prev. + Prog.): \$525

Project Description : Install crossing signals and gates at the railroad crossing at North Linder Road in the City of Meridian. Local match from State Rail Protection Account.

COMPASS PM:

Transportation Safety
Community Infrastructure

Federal PM:



Funding Source		Program						Local Match 10.00%	
Cost Year*	Preliminary Engineering	Preliminary Engineering Consulting	Right-of-Way	Utilities	Construction Engineering	Construction	Total	Federal Share	Local Share
2020	0	0	0	0	10	500	510	459	51
Fund Totals:	\$0	\$0	\$0	\$0	\$10	\$500	\$510	\$459	\$51

Railroad Crossing, Old Fort Boise Road, Canyon County

Key # : 20606

Requesting Agency: Notus-Parma Highway District

Project Year: 2023

Total Previous Expenditures: \$0

Total Programmed Cost: \$250

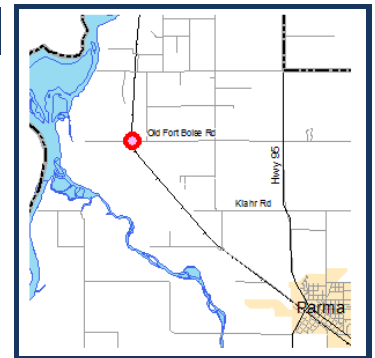
Total Cost (Prev. + Prog.): \$250

Project Description : Install signals and gates at the Union Pacific railroad crossing at Old Fort Boise Road in Canyon County, west of the City of Parma. Local match from State Rail Protection Account.

COMPASS PM:

Transportation Safety
Farmland

Federal PM:



Funding Source		Program						Local Match 10.00%	
Cost Year*	Preliminary Engineering	Preliminary Engineering Consulting	Right-of-Way	Utilities	Construction Engineering	Construction	Total	Federal Share	Local Share
2022	10	0	0	10	0	0	20	18	2
2023	0	0	0	0	0	230	230	207	23
Fund Totals:	\$10	\$0	\$0	\$10	\$0	\$230	\$250	\$225	\$25

*PD = Preliminary Development (projects with development activity but no programmed year of construction)

Railroad Crossing, SH-19, Greenleaf

Key # : ORN22460

Requesting Agency: City of Greenleaf
Project Year: 2022

Total Previous Expenditures: \$0

Total Programmed Cost: \$110

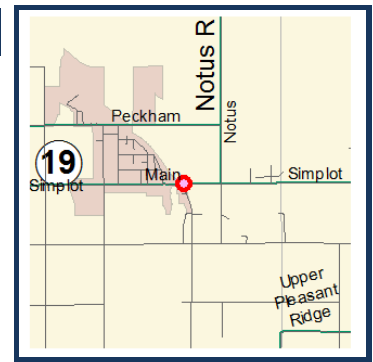
Total Cost (Prev. + Prog.): \$110

Project Description : Install cantilever gates and lights at the Boise Valley Railroad crossing in the City of Greenleaf at milepost 14.24 on SH-19.

COMPASS PM:

Transportation Safety
 Community Infrastructure

Federal PM:



Funding Source		Program						Local Match	
Fed RRX		Hwy Safety - Federal Rail							
Cost Year*	Preliminary Engineering	Preliminary Engineering Consulting	Right-of-Way	Utilities	Construction Engineering	Construction	Total	Federal Share	Local Share
2021	10	0	0	0	0	0	10	10	0
2022	0	0	0	0	0	100	100	100	0
Fund Totals:	\$10	\$0	\$0	\$0	\$0	\$100	\$110	\$110	\$0

SH-16, I-84 to US 20/26, Ada and Canyon Counties

Key # : 20788

Requesting Agency: ITD
Project Year: 2019-2021

Total Previous Expenditures: \$76,025

Total Programmed Cost: \$22,415

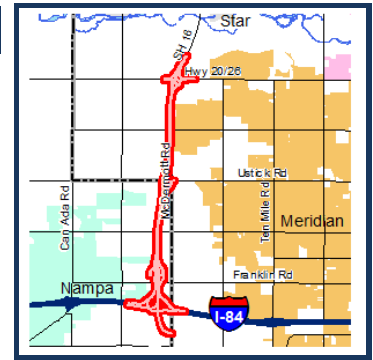
Total Cost (Prev. + Prog.): \$98,440

Project Description : Preliminary engineering and right-of-way acquisition only on SH-16 between I-84 and US 20/26 (Chinden Boulevard) in Ada and Canyon Counties. Funds will be used to update traffic projections, validate right-of-way needs, account for recent development activity, develop a phasing plan for future construction, update right-of-way and construction costs, and acquire right-of-way. (Construction is considered "unfunded.")

COMPASS PM:

Support

Federal PM:



Funding Source		Program						Local Match 73.40%	
IM		State Hwy - Restoration							
Cost Year*	Preliminary Engineering	Preliminary Engineering Consulting	Right-of-Way	Utilities	Construction Engineering	Construction	Total	Federal Share	Local Share
2020	0	0	4,500	0	0	0	4,500	1,197	3,303
2021	0	0	7,500	0	0	0	7,500	1,995	5,505
Fund Totals:	\$0	\$0	\$12,000	\$0	\$0	\$0	\$12,000	\$3,192	\$8,808

Funding Source		Program						Local Match	
State		State Hwy - Significant Projects & Corridors							
Cost Year*	Preliminary Engineering	Preliminary Engineering Consulting	Right-of-Way	Utilities	Construction Engineering	Construction	Total	Federal Share	Local Share
2020	0	0	10,415	0	0	0	10,415	10,415	0
Fund Totals:	\$0	\$0	\$10,415	\$0	\$0	\$0	\$10,415	\$10,415	\$0

*PD = Preliminary Development (projects with development activity but no programmed year of construction)

SH-21, Technology Way to Surprise Way, Boise

Key # : 20428

Requesting Agency: ITD

Project Year: 2022

Total Previous Expenditures: \$150

Total Programmed Cost: \$5,000

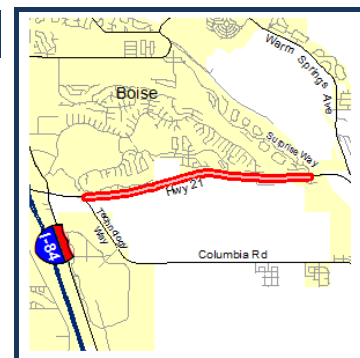
Total Cost (Prev. + Prog.): \$5,150

Project Description : Widen SH-21 from Technology Way (near Micron) to Surprise Way (just west of the Boise River Bridge) in the City of Boise. The project will widen the roadway to 40 feet to include two 12-foot travel lanes, a 4-foot center median, and 6-foot shoulders on both sides.

COMPASS PM:

Congestion Reduction/System Reliability
 Transportation Safety
 Community Infrastructure

Federal PM:



Funding Source		HSIP		Program				State Highway - Safety		Local Match 7.34%	
Cost Year*	Preliminary Engineering	Preliminary Engineering Consulting	Right-of-Way	Utilities	Construction Engineering	Construction	Total	Federal Share	Local Share		
2022	0	0	0	0	500	4,500	5,000	4,633	367		
Fund Totals:	\$0	\$0	\$0	\$0	\$500	\$4,500	\$5,000	\$4,633	\$367		

SH-44 (State Street) and SH-55 (Eagle Road) Intersection, 1/2 CFI, Eagle

Key # : 13476

Requesting Agency: ITD

Project Year: 2021

Total Previous Expenditures: \$1,131

Total Programmed Cost: \$6,875

Total Cost (Prev. + Prog.): \$8,006

Project Description : Construct a partial (1/2) continuous flow intersection (CFI), including displaced left-turn lanes, at SH-44 (State Street) and SH-55 (Eagle Road) in the City of Eagle.

COMPASS PM:

Congestion Reduction/System Reliability
 Freight Movement and Economic Vitality
 Transportation Safety
 Community Infrastructure

Federal PM:



Funding Source		NHPP		Program				State Hwy - Safety & Capacity (Capacity)		Local Match 7.34%	
Cost Year*	Preliminary Engineering	Preliminary Engineering Consulting	Right-of-Way	Utilities	Construction Engineering	Construction	Total	Federal Share	Local Share		
2021	0	0	0	0	625	6,250	6,875	6,370	505		
Fund Totals:	\$0	\$0	\$0	\$0	\$625	\$6,250	\$6,875	\$6,370	\$505		

*PD = Preliminary Development (projects with development activity but no programmed year of construction)

SH-44 (State Street), SH-16 to Linder Road, Ada County

Key # : 20266

Requesting Agency: ITD

Project Year: 2023

Total Previous Expenditures: \$413

Total Programmed Cost: \$9,250

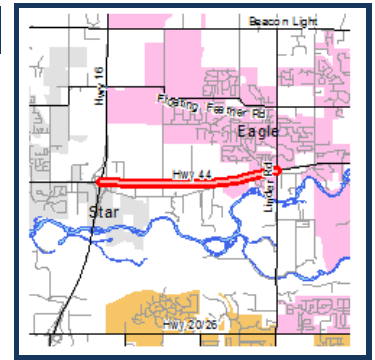
Total Cost (Prev. + Prog.): \$9,663

Project Description : Add an additional westbound and eastbound lane to improve congestion and reduce crashes along SH-44 (State Street) from SH-16 to Linder Road near the City of Eagle.

COMPASS PM:

Congestion Reduction/System Reliability
 Freight Movement and Economic Vitality
 Transportation Safety
 Community Infrastructure

Federal PM:



Funding Source		TECM		Program				State Hwy - Safety & Capacity (Safety)		Local Match 100.00%	
Cost Year*	Preliminary Engineering	Preliminary Engineering Consulting	Right-of-Way	Utilities	Construction Engineering	Construction	Construction	Total	Federal Share	Local Share	
2020	0	0	750	0	0	0	0	750	0	750	
2023	0	0	0	0	750	7,750	8,500	8,500	0	8,500	
Fund Totals:	\$0	\$0	\$750	\$0	\$750	\$7,750	\$9,250	\$9,250	\$0	\$9,250	

SH-44 (State Street), Star Road to SH-16, Ada County

Key # : 20574

Requesting Agency: ITD

Project Year: 2024

Total Previous Expenditures: \$200

Total Programmed Cost: \$8,000

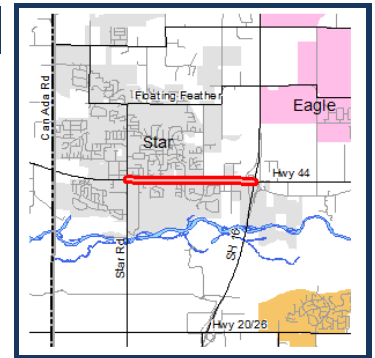
Total Cost (Prev. + Prog.): \$8,200

Project Description : Widen SH-44 (State Street) from Star Road to SH-16 in Ada County. An additional lane in both directions will alleviate congestion issues and improve safety.

COMPASS PM:

Congestion Reduction/System Reliability
 Freight Movement and Economic Vitality
 Transportation Safety
 Community Infrastructure

Federal PM:



Funding Source		TECM		Program				State Hwy - Safety & Capacity (Capacity)		Local Match 100.00%	
Cost Year*	Preliminary Engineering	Preliminary Engineering Consulting	Right-of-Way	Utilities	Construction Engineering	Construction	Construction	Total	Federal Share	Local Share	
2020	0	500	0	0	0	0	0	500	0	500	
2021	0	0	1,000	0	0	0	0	1,000	0	1,000	
2024	0	0	0	0	500	6,000	6,500	6,500	0	6,500	
Fund Totals:	\$0	\$500	\$1,000	\$0	\$500	\$6,000	\$8,000	\$8,000	\$0	\$8,000	

*PD = Preliminary Development (projects with development activity but no programmed year of construction)

SH-45, SH-78 to Melba Road, Canyon and Owyhee Counties

Key # : 21849

Requesting Agency: ITD

Project Year: 2025

Total Previous Expenditures: \$0

Total Programmed Cost: \$6,500

Total Cost (Prev. + Prog.): \$6,500

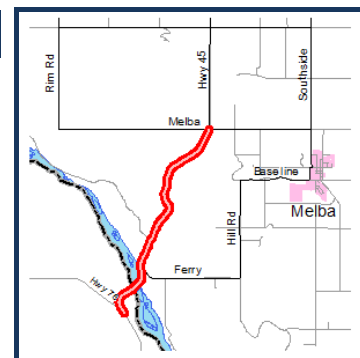
Project Description : Reconstruct SH-45 from the junction of SH-78 to Melba Road in Canyon County. (82% Canyon County and 17% Owyhee County)

COMPASS PM:

Maintenance

Farmland

Federal PM:



Funding Source		Program						Local Match 7.34%	
Cost Year*	Preliminary Engineering	Preliminary Engineering Consulting	Right-of-Way	Utilities	Construction Engineering	Construction	Total	Federal Share	Local Share
2020	520	0	0	0	0	0	520	482	38
2025	0	0	0	0	780	5,200	5,980	5,541	439
Fund Totals:	\$520	\$0	\$0	\$0	\$780	\$5,200	\$6,500	\$6,023	\$477

SH-55 (Eagle Road), Meridian Towne Center, Meridian

Key # : 13349

Requesting Agency: Private Developer

Project Year: 2022

Total Previous Expenditures: \$145

Total Programmed Cost: \$5,000

Total Cost (Prev. + Prog.): \$5,145

Project Description : Add one lane southbound from River Valley Street to Franklin Road in the City of Meridian. The project will be constructed by the developer of the Meridian Towne Center shopping center (The Village at Meridian) using State Tax Anticipated Revenue (STAR) financing.

COMPASS PM:

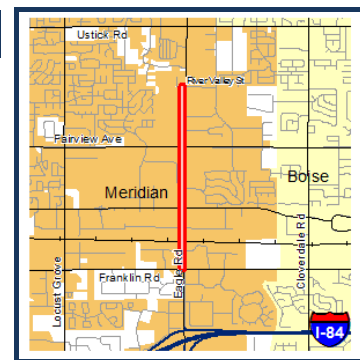
Congestion Reduction/System Reliability

Freight Movement and Economic Vitality

Transportation Safety

Community Infrastructure

Federal PM:



Funding Source		Program						Local Match 100.00%	
Cost Year*	Preliminary Engineering	Preliminary Engineering Consulting	Right-of-Way	Utilities	Construction Engineering	Construction	Total	Federal Share	Local Share
2022	0	0	0	0	0	5,000	5,000	0	5,000
Fund Totals:	\$0	\$0	\$0	\$0	\$0	\$5,000	\$5,000	\$0	\$5,000

*PD = Preliminary Development (projects with development activity but no programmed year of construction)

SH-55 (Karcher Road), Midway Road to Middleton Road, Nampa

Key # : 21867

Requesting Agency: ITD

Project Year: 2025

Total Previous Expenditures: \$0

Total Programmed Cost: \$6,210

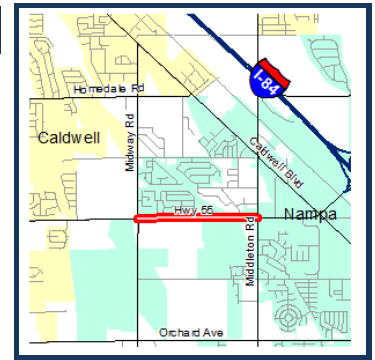
Total Cost (Prev. + Prog.): \$6,210

Project Description : Widen SH-55 (Karcher Road) from Midway Road to Middleton Road in the City of Nampa. The project will add one travel lane in each direction to improve mobility and reduce crashes along the corridor.

COMPASS PM:

Congestion Reduction/System Reliability
 Transportation Safety
 Freight Movement and Economic Vitality
 Community Infrastructure

Federal PM:



Funding Source		TECM		Program				State Hwy - Safety & Capacity (Capacity)		Local Match 100.00%	
Cost Year*	Preliminary Engineering	Preliminary Engineering Consulting	Right-of-Way	Utilities	Construction Engineering	Construction	Total	Federal Share	Local Share		
2020	300	0	0	0	0	0	300	0	300		
2021	0	0	300	0	0	0	300	0	300		
2025	0	0	0	0	510	5,100	5,610	0	5,610		
Fund Totals:	\$300	\$0	\$300	\$0	\$510	\$5,100	\$6,210	\$0	\$6,210		

SH-55, SH-44 (State Street) to Payette River Bridge, Rehabilitation

Key # : 20506

Requesting Agency: ITD

Project Year: 2023

Total Previous Expenditures: \$200

Total Programmed Cost: \$11,288

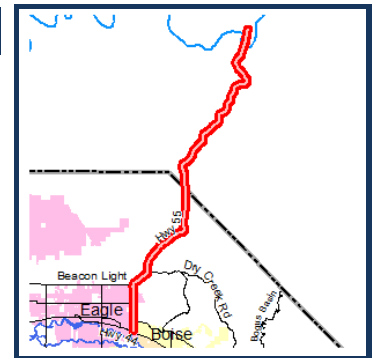
Total Cost (Prev. + Prog.): \$11,488

Project Description : Rehabilitate approximately 18 miles of pavement on SH-55 from SH-44 (State Street) to the Payette River Bridge in Ada and Boise Counties. (45% Ada County and 55% Boise County)

COMPASS PM:

Maintenance
 Farmland

Federal PM:



Funding Source		NHPP		Program				State Hwy - Restoration		Local Match 7.34%	
Cost Year*	Preliminary Engineering	Preliminary Engineering Consulting	Right-of-Way	Utilities	Construction Engineering	Construction	Total	Federal Share	Local Share		
2023	0	0	0	0	884	10,404	11,288	10,459	829		
Fund Totals:	\$0	\$0	\$0	\$0	\$884	\$10,404	\$11,288	\$10,459	\$829		

*PD = Preliminary Development (projects with development activity but no programmed year of construction)

SH-55, Snake River Bridge, Marsing

Key # : 13387

Requesting Agency: ITD
Project Year: 2019-2020
Total Previous Expenditures: \$5,218
Total Programmed Cost: \$11,188
Total Cost (Prev. + Prog.): \$16,406

COMPASS PM:

Transportation Infrastructure
 Freight Movement and Economic Vitality
 Farmland

Federal PM:



Project Description : Replace bridge on SH-55 over the Snake River near the City of Marsing. (69% Canyon County and 31% Owyhee County).

Funding Source			Program					Local Match 100.00%	
Cost Year*	Preliminary Engineering	Preliminary Engineering Consulting	Right-of-Way	Utilities	Construction Engineering	Construction	Total	Federal Share	Local Share
2020	0	0	0	0	0	11,188	11,188	0	11,188
Fund Totals:	\$0	\$0	\$0	\$0	\$0	\$11,188	\$11,188	\$0	\$11,188

South Cemetery Road, Highland Drive to Willow Creek, Middleton

Key # : 12048

Requesting Agency: City of Middleton
Project Year: 2021
Total Previous Expenditures: \$762
Total Programmed Cost: \$2,707
Total Cost (Prev. + Prog.): \$3,469

COMPASS PM:

Congestion Reduction/System Reliability
 Community Infrastructure

Federal PM:



Project Description : Construct a new 0.284 mile roadway segment linking SH-44 and Middleton Road by way of Highland Drive and Sawtooth Lake Drive in the City of Middleton.

Funding Source			Program					Local Match 7.34%	
Cost Year*	Preliminary Engineering	Preliminary Engineering Consulting	Right-of-Way	Utilities	Construction Engineering	Construction	Total	Federal Share	Local Share
2021	0	0	0	0	424	2,283	2,707	2,508	199
Fund Totals:	\$0	\$0	\$0	\$0	\$424	\$2,283	\$2,707	\$2,508	\$199

*PD = Preliminary Development (projects with development activity but no programmed year of construction)

SR2S, VRT, Ada County - FY2021 and FY2022

Key # : 20245

COMPASS PM:

Federal PM:

Requesting Agency: Valley Regional Transit

Support



SR2S
Safe Routes to School

Project Year: 2021-2022

Total Previous Expenditures: \$0

Total Programmed Cost: \$337

Total Cost (Prev. + Prog.): \$337

Project Description : Support up to three full-time staff for Safe Routes to Schools (SR2S) coordination serving school in Ada County with a focus on the Boise and West Ada School Districts for service years FY2021 and FY2022. The Treasure Valley YMCA will receive pass-through funds for this project.

Funding Source		TAP-TMA		Program			Local Hwy - Transportation Alternatives		Local Match 7.34%	
Cost Year*	Preliminary Engineering	Preliminary Engineering Consulting	Right-of-Way	Utilities	Construction Engineering	Construction	Total	Federal Share	Local Share	
2021	0	0	0	0	0	337	337	312	25	
Fund Totals:	\$0	\$0	\$0	\$0	\$0	\$337	\$337	\$312	\$25	

SR2S, VRT, Ada County - FY2023

Key # : 20493

COMPASS PM:

Federal PM:

Requesting Agency: Valley Regional Transit

Support



SR2S
Safe Routes to School

Project Year: 2023

Total Previous Expenditures: \$0

Total Programmed Cost: \$165

Total Cost (Prev. + Prog.): \$165

Project Description : Support up to three full-time staff for Safe Routes to School (SR2S) coordination serving schools in Ada County with a focus on Boise and West Ada School Districts for service year FY2023. The Treasure Valley YMCA will receive pass-through funds for this project.

Funding Source		TAP-TMA		Program			Local Hwy - Transportation Alternatives		Local Match 7.34%	
Cost Year*	Preliminary Engineering	Preliminary Engineering Consulting	Right-of-Way	Utilities	Construction Engineering	Construction	Total	Federal Share	Local Share	
2023	0	0	0	0	0	165	165	153	12	
Fund Totals:	\$0	\$0	\$0	\$0	\$0	\$165	\$165	\$153	\$12	

SR2S, VRT, Ada County - FY2024 and FY2025

Key # : 21910

COMPASS PM:

Federal PM:

Requesting Agency: Valley Regional Transit

Support



SR2S
Safe Routes to School

Project Year: 2024-2025

Total Previous Expenditures: \$0

Total Programmed Cost: \$389

Total Cost (Prev. + Prog.): \$389

Project Description : Support up to three full-time and one part-time staff for Safe Routes to School (SR2S) coordination serving schools in Ada County with a focus on the Boise and West Ada School Districts for service years FY2024 and FY2025. The Treasure Valley YMCA will receive pass-through funds for this project.

Funding Source		TAP-TMA					Program		Local Hwy - Transportation Alternatives		Local Match 7.34%	
Cost Year*	Preliminary Engineering	Preliminary Engineering Consulting	Right-of-Way	Utilities	Construction Engineering	Construction	Total	Federal Share	Local Share			
2024	0	0	0	0	0	389	389	360	29			
Fund Totals:	\$0	\$0	\$0	\$0	\$0	\$389	\$389	\$360	\$29			

SR2S, VRT, Canyon County - FY2020

Key # : 22030

COMPASS PM:

Federal PM:

Requesting Agency: Valley Regional Transit

Support



SR2S
Safe Routes to School

Project Year: 2020

Total Previous Expenditures: \$0

Total Programmed Cost: \$65

Total Cost (Prev. + Prog.): \$65

Project Description : Provides for Safe Routes to School program personnel, education materials, encouragement incentives, special events, and indirect costs in Canyon County.

Funding Source		TAP-Urban					Program		Local Hwy - Transportation Alternatives		Local Match 7.34%	
Cost Year*	Preliminary Engineering	Preliminary Engineering Consulting	Right-of-Way	Utilities	Construction Engineering	Construction	Total	Federal Share	Local Share			
2020	0	0	0	0	0	65	65	60	5			
Fund Totals:	\$0	\$0	\$0	\$0	\$0	\$65	\$65	\$60	\$5			

*PD = Preliminary Development (projects with development activity but no programmed year of construction)

SR2S, VRT, Canyon County - FY2021

Key # : 22031

COMPASS PM:

Federal PM:

Requesting Agency: Valley Regional Transit

Support



SR2S
Safe Routes to School

Project Year: 2021

Total Previous Expenditures: \$0

Total Programmed Cost: \$65

Total Cost (Prev. + Prog.): \$65

Project Description : Provides for Safe Routes to School program personnel, education materials, encouragement incentives, special events, and indirect costs in Canyon County.

Funding Source		Program					Local Hwy - Transportation Alternatives		Local Match 7.34%	
Cost Year*	Preliminary Engineering	Preliminary Engineering Consulting	Right-of-Way	Utilities	Construction Engineering	Construction	Total	Federal Share	Local Share	
2021	0	0	0	0	0	65	65	60	5	
Fund Totals:	\$0	\$0	\$0	\$0	\$0	\$65	\$65	\$60	\$5	

Study, Big Data Purchase, COMPASS

Key # : ORN22394

COMPASS PM:

Federal PM:

Requesting Agency: COMPASS

Support

Project Year: PD

Total Previous Expenditures: \$0

Total Programmed Cost: \$150

Total Cost (Prev. + Prog.): \$150

Project Description : Purchase data from vendor(s) to supplement the COMPASS Household Travel Survey data (2021) and census data. The data will be used to update the "external" trip (trip to/from the surrounding counties) rates and characteristics in the regional travel demand model, analyze non-motorized travel, and allow for review of trips, travel time, time of day, and mode to and from sub-areas (smaller than cities) in the region to help refine specific parameters in the regional model.



Funding Source		Program					Local Hwy - Transportation Management Area		Local Match 7.34%	
Cost Year*	Preliminary Engineering	Preliminary Engineering Consulting	Right-of-Way	Utilities	Construction Engineering	Construction	Total	Federal Share	Local Share	
PD	0	150	0	0	0	0	150	139	11	
Fund Totals:	\$0	\$150	\$0	\$0	\$0	\$0	\$150	\$139	\$11	

*PD = Preliminary Development (projects with development activity but no programmed year of construction)

Study, Fiscal Impact Analysis, COMPASS

Key # : ORN22395

COMPASS PM:

Federal PM:

Requesting Agency: COMPASS

Support

Project Year: PD

Total Previous Expenditures: \$0

Total Programmed Cost: \$60

Total Cost (Prev. + Prog.): \$60

Project Description : To better implement the goals of Communities in Motion, this project will provide information on the fiscal impact of various growth patterns. Work will develop a fiscal impact analysis calculator; analyze the public costs and revenues of various land use patterns; build an economic model that can be used in the COMPASS development checklist for highlighting the costs of development; and conducting outreach and training for local decision-makers so that fiscal analysis can be used in local land use decision-making.



Funding Source		STP-TMA		Program				Local Hwy - Transportation Management Area		Local Match 7.34%	
Cost Year*	Preliminary Engineering	Preliminary Engineering Consulting	Right-of-Way	Utilities	Construction Engineering	Construction	Construction	Total	Federal Share	Local Share	
PD	0	60	0	0	0	0	0	60	56	4	
Fund Totals:	\$0	\$60	\$0	\$0	\$0	\$0	\$0	\$60	\$56	\$4	

Study, Mores Creek Bridge Asset Plan, Ada County

Key # : 21968

COMPASS PM:

Federal PM:

Requesting Agency: ITD

Support

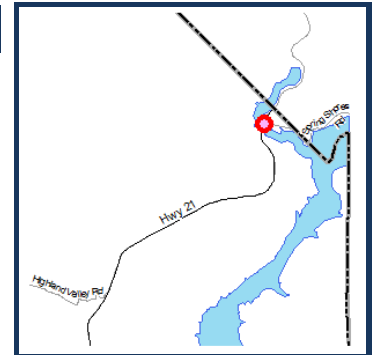
Project Year: 2019-2020

Total Previous Expenditures: \$275

Total Programmed Cost: \$5

Total Cost (Prev. + Prog.): \$280

Project Description : Develop a bridge asset management plan for the Mores Creek Bridge, located on SH-21 about one-half mile from the Ada/Boise County line.



Funding Source		STP-State		Program				State Hwy - Bridge Preservation		Local Match 7.34%	
Cost Year*	Preliminary Engineering	Preliminary Engineering Consulting	Right-of-Way	Utilities	Construction Engineering	Construction	Construction	Total	Federal Share	Local Share	
2020	5	0	0	0	0	0	0	5	5	0	
Fund Totals:	\$5	\$0	\$0	\$0	\$0	\$0	\$0	\$5	\$5	\$0	

*PD = Preliminary Development (projects with development activity but no programmed year of construction)

Study, Pavement Management Inventory and Plan, Canyon County

Key # : 22020

COMPASS PM:

Federal PM:

Requesting Agency: COMPASS

Support

Project Year: PD

Total Previous Expenditures: \$0

Total Programmed Cost: \$150

Total Cost (Prev. + Prog.): \$150

Project Description : Conduct a study to collect pavement condition data on arterial and collector roadways for a pavement condition index for jurisdictions not currently conducting such inspections in Canyon County. The study will also establish baseline data for pavement information, establish reporting protocols and collaboration of reporting, procure and support software purchase and training to perform predictive budgeting for pavement management programs.



Funding Source		STP-U		Program			Local Hwy - Urban		Local Match 7.34%	
Cost Year*	Preliminary Engineering	Preliminary Engineering Consulting	Right-of-Way	Utilities	Construction Engineering	Construction	Total	Federal Share	Local Share	
PD	0	150	0	0	0	0	150	139	11	
Fund Totals:	\$0	\$150	\$0	\$0	\$0	\$0	\$150	\$139	\$11	

Ten Mile Road, McMillan Road to US 20/26 (Chinden Boulevard), Meridian

Key # : RD202-31

COMPASS PM:

Federal PM:

Requesting Agency: ACHD

Congestion Reduction/System Reliability

Project Year: PD

Transportation Safety

Total Previous Expenditures: \$0

Community Infrastructure

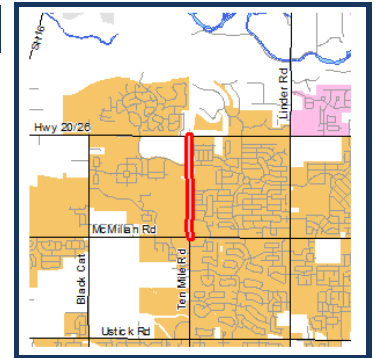
Total Programmed Cost: \$3,427

Environmental Sustainability

Total Cost (Prev. + Prog.): \$3,427

Health

Project Description : Widen Ten Mile Road from McMillan Road to US 20/26 (Chinden Boulevard) in the City of Meridian to five lanes including curb, gutter, sidewalk, and bike lanes.



Funding Source		Local (Regionally Significant)		Program			Hwy - Local Partnerships		Local Match 100.00%	
Cost Year*	Preliminary Engineering	Preliminary Engineering Consulting	Right-of-Way	Utilities	Construction Engineering	Construction	Total	Federal Share	Local Share	
2021	0	260	0	0	0	0	260	0	260	
PD	0	0	550	0	0	2,617	3,167	0	3,167	
Fund Totals:	\$0	\$260	\$550	\$0	\$0	\$2,617	\$3,427	\$0	\$3,427	

*PD = Preliminary Development (projects with development activity but no programmed year of construction)

Ten Mile Road, Ustick Road to McMillan Road, Meridian

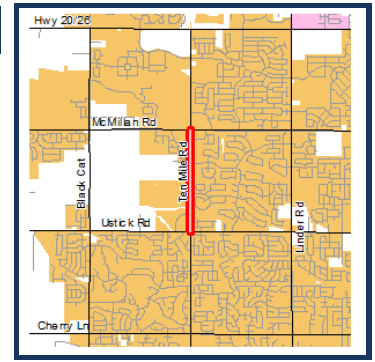
Key # : RD202-32

Requesting Agency: ACHD
Project Year: 2020
Total Previous Expenditures: \$1,088
Total Programmed Cost: \$6,413
Total Cost (Prev. + Prog.): \$7,501

COMPASS PM:

Transportation Safety
 Transportation Infrastructure
 Community Infrastructure
 Congestion Reduction/System Reliability
 Health

Federal PM:



Project Description : Widen Ten Mile Road from Ustick Road to McMillan Road in the City of Meridian to five lanes including curb, gutter, sidewalk, bike lanes and two bridge structures.

Funding Source Local (Regionally Significant) Program Hwy - Local Partnerships								Local Match 100.00%	
Cost Year*	Preliminary Engineering	Preliminary Engineering Consulting	Right-of-Way	Utilities	Construction Engineering	Construction	Total	Federal Share	Local Share
2020	0	37	0	6	0	6,370	6,413	0	6,413
Fund Totals:	\$0	\$37	\$0	\$6	\$0	\$6,370	\$6,413	\$0	\$6,413

Transit - Acquisition of Service, Boise Area, VRT

Key # : 19691

Requesting Agency: Valley Regional Transit
Project Year: 2020-PD
Total Previous Expenditures: \$0
Total Programmed Cost: \$2,244
Total Cost (Prev. + Prog.): \$2,244

COMPASS PM:

Support

Federal PM:



Project Description : Provide transportation services through local human service organizations who work with the elderly and persons with disabilities in the Boise Urbanized Area. See Valley Regional Transit's Program of Projects for more details.

Funding Source FTA 5310 LU Program Transit Capital							Local Match 20.00%		
Cost Year*	Preliminary Engineering	Preliminary Engineering Consulting	Right-of-Way	Utilities	Construction Engineering	Construction	Total	Federal Share	Local Share
2020	0	0	0	0	0	374	374	299	75
2021	0	0	0	0	0	374	374	299	75
2022	0	0	0	0	0	374	374	299	75
2023	0	0	0	0	0	374	374	299	75
2024	0	0	0	0	0	374	374	299	75
PD	0	0	0	0	0	374	374	299	75
Fund Totals:	\$0	\$0	\$0	\$0	\$0	\$2,244	\$2,244	\$1,795	\$449

*PD = Preliminary Development (projects with development activity but no programmed year of construction)

Transit - Acquisition of Service, Canyon County, VRT

Key # : 19464c

COMPASS PM:

Federal PM:

Requesting Agency: Valley Regional Transit

Congestion Reduction/System Reliability

Project Year: 2019-2020

Total Previous Expenditures: \$47

Total Programmed Cost: \$47

Total Cost (Prev. + Prog.): \$94

Project Description : Provide transportation services through Valley Regional Transit in rural and urban areas of Ada and Canyon Counties, for services in FY2019 and FY2020. Additional details about this program are included in ITD's programming documents.



Funding Source		Program					Transit Capital		Local Match 20.00%	
Cost Year*	Preliminary Engineering	Preliminary Engineering Consulting	Right-of-Way	Utilities	Construction Engineering	Construction	Total	Federal Share	Local Share	
2020	0	0	0	0	0	47	47	38	9	
Fund Totals:	\$0	\$0	\$0	\$0	\$0	\$47	\$47	\$38	\$9	

Transit - Acquisition of Service, Nampa Area, VRT

Key # : 19464a

COMPASS PM:

Federal PM:

Requesting Agency: Valley Regional Transit

Support

Project Year: 2019-2021

Total Previous Expenditures: \$283

Total Programmed Cost: \$566

Total Cost (Prev. + Prog.): \$849

Project Description : Provide transportation services through local human service organizations who work with the elderly and persons with disabilities in the Nampa Urbanized Area. FY2017 funds carried over to FY2018. Additional details about this program are included in ITD's programming documents.



Funding Source		Program					Transit Capital		Local Match 20.00%	
Cost Year*	Preliminary Engineering	Preliminary Engineering Consulting	Right-of-Way	Utilities	Construction Engineering	Construction	Total	Federal Share	Local Share	
2020	0	0	0	0	0	283	283	226	57	
2021	0	0	0	0	0	283	283	226	57	
Fund Totals:	\$0	\$0	\$0	\$0	\$0	\$566	\$566	\$453	\$113	

*PD = Preliminary Development (projects with development activity but no programmed year of construction)

Transit - Fixed Line Service, Rural Areas, TVT

Key # : 19983

Requesting Agency: Treasure Valley Transit

Project Year: 2019-2020

Total Previous Expenditures: \$1,973

Total Programmed Cost: \$1,973

Total Cost (Prev. + Prog.): \$3,946

Project Description : Fixed line service in rural areas of Southwest Idaho, including Ada and Canyon Counties for all groups, including but not limited to, older adults, persons with disabilities, youth, low income, non-drivers, minority groups, veterans, and refugee populations. The project includes required demand response service, as well as administration, operations, preventive maintenance, and capital purchases. Various aspects of the project have different local match rates. The match rate shown is an average of the rates combined. Additional details about this program are included in ITD's programming documents.

COMPASS PM:

Maintenance

Transportation Infrastructure

Congestion Reduction/System Reliability

Federal PM:



Funding Source		Program						Local Match 28.21%	
FTA 5311	Transit Operations								
Cost Year*	Preliminary Engineering	Preliminary Engineering Consulting	Right-of-Way	Utilities	Construction Engineering	Construction	Total	Federal Share	Local Share
2020	0	0	0	0	0	1,973	1,973	1,416	557
Fund Totals:	\$0	\$0	\$0	\$0	\$0	\$1,973	\$1,973	\$1,416	\$557

Transit - Nampa Transit-Oriented Development, Design and Property, TVT

Key # : 19380a

Requesting Agency: Treasure Valley Transit

Project Year: 2020

Total Previous Expenditures: \$0

Total Programmed Cost: \$860

Total Cost (Prev. + Prog.): \$860

Project Description : Design and construct a transit-oriented development using an existing building to create administrative offices for Treasure Valley Transit, and a central transportation and community services hub in an economically depressed area in the City of Nampa. Other aspects of the project include an expanded network of local complete streets, pedestrian and bicycle improvements, and transit linkages. Funds are currently for design and property acquisition only. Construction is considered "unfunded." Construction funding will be added as costs and the location are determined, and funds become available. Companioned with KN 20789 and KN 20136d.

COMPASS PM:

Transportation Infrastructure

Federal PM:



Funding Source		Program						Local Match 20.00%	
FTA 5311	Transit Capital								
Cost Year*	Preliminary Engineering	Preliminary Engineering Consulting	Right-of-Way	Utilities	Construction Engineering	Construction	Total	Federal Share	Local Share
2020	0	384	476	0	0	0	860	688	172
Fund Totals:	\$0	\$384	\$476	\$0	\$0	\$0	\$860	\$688	\$172

*PD = Preliminary Development (projects with development activity but no programmed year of construction)

Transit - Nampa Transit-Oriented Development, Property, TVT

Key # : 20136d

COMPASS PM:

Federal PM:

Requesting Agency: Treasure Valley Transit

Transportation Infrastructure



Project Year: 2020

Total Previous Expenditures: \$0

Total Programmed Cost: \$649

Total Cost (Prev. + Prog.): \$649

Project Description : Design and construct a transit-oriented development using an existing building to create administrative offices for Treasure Valley Transit, and a central transportation and community services hub in an economically depressed area in the City of Nampa. Other aspects of the project include an expanded network of local complete streets, pedestrian and bicycle improvements, and transit linkages. These funds are currently for property acquisition only. Construction is considered "unfunded." Construction funding will be added as costs and the location are determined, and funds become available. Companioned with KN 20789 and KN 19380a.

Funding Source		Program					Local Match 20.00%		
Cost Year*	Preliminary Engineering	Preliminary Engineering Consulting	Right-of-Way	Utilities	Construction Engineering	Construction	Total	Federal Share	Local Share
2020	0	0	649	0	0	0	649	519	130
Fund Totals:	\$0	\$0	\$649	\$0	\$0	\$0	\$649	\$519	\$130

Transit - Operations - Fixed Route and Mobility Management, Nampa Area, VRT

Key # : 18786

COMPASS PM:

Federal PM:

Requesting Agency: Valley Regional Transit

Support

Project Year: 2020-PD

Total Previous Expenditures: \$0

Total Programmed Cost: \$8,136

Total Cost (Prev. + Prog.): \$8,136

Project Description : Provide for fixed route and mobility management operations and services in the Nampa Urbanized Area. See Valley Regional Transit's Program of Projects for more details.



Funding Source		Program					Local Match 50.00%		
Cost Year*	Preliminary Engineering	Preliminary Engineering Consulting	Right-of-Way	Utilities	Construction Engineering	Construction	Total	Federal Share	Local Share
2020	0	0	0	0	0	1,356	1,356	678	678
2021	0	0	0	0	0	1,356	1,356	678	678
2022	0	0	0	0	0	1,356	1,356	678	678
2023	0	0	0	0	0	1,356	1,356	678	678
2024	0	0	0	0	0	1,356	1,356	678	678
PD	0	0	0	0	0	1,356	1,356	678	678
Fund Totals:	\$0	\$0	\$0	\$0	\$0	\$8,136	\$8,136	\$4,068	\$4,068

*PD = Preliminary Development (projects with development activity but no programmed year of construction)

Transit - Operations - Mobility Management, Boise Area, VRT

Key # : 19041

COMPASS PM:

Federal PM:

Requesting Agency: Valley Regional Transit

Support

Project Year: 2020-PD

Total Previous Expenditures: \$0

Total Programmed Cost: \$4,284

Total Cost (Prev. + Prog.): \$4,284

Project Description : Provide operations for mobility management programs in the Boise Urbanized Area. See Valley Regional Transit's Program of Projects for more details.



Funding Source		Program						Local Match 50.00%	
Cost Year*	Preliminary Engineering	Preliminary Engineering Consulting	Right-of-Way	Utilities	Construction Engineering	Construction	Total	Federal Share	Local Share
2020	0	0	0	0	0	714	714	357	357
2021	0	0	0	0	0	714	714	357	357
2022	0	0	0	0	0	714	714	357	357
2023	0	0	0	0	0	714	714	357	357
2024	0	0	0	0	0	714	714	357	357
PD	0	0	0	0	0	714	714	357	357
Fund Totals:	\$0	\$0	\$0	\$0	\$0	\$4,284	\$4,284	\$2,142	\$2,142

Transit - Preventive Maintenance and Demand Response, Nampa Area, VRT

Key # : 18914

COMPASS PM:

Federal PM:

Requesting Agency: Valley Regional Transit

Maintenance

Project Year: 2020-PD

Support

Total Previous Expenditures: \$0

Total Programmed Cost: \$1,854

Total Cost (Prev. + Prog.): \$1,854

Project Description : Provide preventive maintenance and complementary paratransit to sustain vehicle and facility safety and security in the Nampa Urbanized Area. See Valley Regional Transit's Program of Projects for more details.



Funding Source		Program						Local Match 20.00%	
Cost Year*	Preliminary Engineering	Preliminary Engineering Consulting	Right-of-Way	Utilities	Construction Engineering	Construction	Total	Federal Share	Local Share
2020	0	0	0	0	0	309	309	247	62
2021	0	0	0	0	0	309	309	247	62
2022	0	0	0	0	0	309	309	247	62
2023	0	0	0	0	0	309	309	247	62
2024	0	0	0	0	0	309	309	247	62
PD	0	0	0	0	0	309	309	247	62
Fund Totals:	\$0	\$0	\$0	\$0	\$0	\$1,854	\$1,854	\$1,483	\$371

*PD = Preliminary Development (projects with development activity but no programmed year of construction)

Transit - Preventive Maintenance, and Paratransit, Boise Area, VRT

Key # : 19137

COMPASS PM:

Federal PM:

Requesting Agency: Valley Regional Transit

Maintenance

Project Year: 2020-PD

Support

Total Previous Expenditures: \$0

Total Programmed Cost: \$15,648

Total Cost (Prev. + Prog.): \$15,648

Project Description : Provide preventive maintenance and complementary paratransit operation services to sustain vehicle and facility safety and security in the Boise Urbanized Area. See Valley Regional Transit's Program of Projects for more details.



Funding Source		FTA 5307 LU		Program				Transit Capital		Local Match 20.00%	
Cost Year*	Preliminary Engineering	Preliminary Engineering Consulting	Right-of-Way	Utilities	Construction Engineering	Construction	Total	Federal Share	Local Share		
2020	0	0	0	0	0	2,608	2,608	2,086	522		
2021	0	0	0	0	0	2,608	2,608	2,086	522		
2022	0	0	0	0	0	2,608	2,608	2,086	522		
2023	0	0	0	0	0	2,608	2,608	2,086	522		
2024	0	0	0	0	0	2,608	2,608	2,086	522		
PD	0	0	0	0	0	2,608	2,608	2,086	522		
Fund Totals:	\$0	\$0	\$0	\$0	\$0	\$15,648	\$15,648	\$12,518	\$3,130		

Transit - Purchase of Service, Rural Areas, TVT

Key # : 19464b

COMPASS PM:

Federal PM:

Requesting Agency: Treasure Valley Transit

Congestion Reduction/System Reliability

Project Year: 2019-2020

Total Previous Expenditures: \$134

Total Programmed Cost: \$134

Total Cost (Prev. + Prog.): \$268

Project Description : Provide transportation services through Treasure Valley Transit in rural areas of Southwest Idaho, including Canyon County, for services in FY2019 and FY2020. Additional details about this program are included in ITD's programming documents.



Funding Source		FTA 5310 R		Program				Transit Capital		Local Match 20.00%	
Cost Year*	Preliminary Engineering	Preliminary Engineering Consulting	Right-of-Way	Utilities	Construction Engineering	Construction	Total	Federal Share	Local Share		
2020	0	0	0	0	0	134	134	107	27		
Fund Totals:	\$0	\$0	\$0	\$0	\$0	\$134	\$134	\$107	\$27		

*PD = Preliminary Development (projects with development activity but no programmed year of construction)

Transit - Vehicle Replacement, Parma Senior Center, VRT

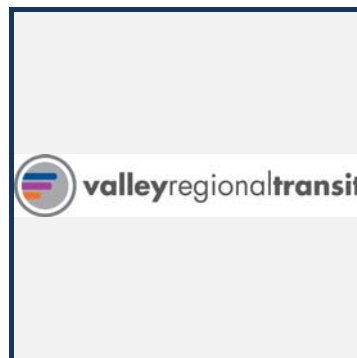
Key #: 19464e

COMPASS PM:

Federal PM:

Requesting Agency: Valley Regional Transit

Transportation Infrastructure



Project Year: 2020

Total Previous Expenditures: \$0

Total Programmed Cost: \$68

Total Cost (Prev. + Prog.): \$68

Project Description : Replace a transit vehicle used by the Parma Senior Center for services for persons who are elderly or disabled. Additional details about this program are included in ITD's programming documents.

Funding Source		Program						Transit Capital		Local Match 20.00%	
Cost Year*	Preliminary Engineering	Preliminary Engineering Consulting	Right-of-Way	Utilities	Construction Engineering	Construction	Total	Federal Share	Local Share		
2020	0	0	0	0	0	68	68	54	14		
Fund Totals:	\$0	\$0	\$0	\$0	\$0	\$68	\$68	\$54	\$14		

Transit - Vehicle Replacements, Rural Areas, TVT

Key #: 20136b

COMPASS PM:

Federal PM:

Requesting Agency: Treasure Valley Transit

Transportation Infrastructure



Project Year: 2019-2020

Total Previous Expenditures: \$432

Total Programmed Cost: \$195

Total Cost (Prev. + Prog.): \$627

Project Description : Purchase replacement transit vehicles that are currently operating fixed route and demand response services within rural areas of District 3. Additional details about this program are included in ITD's programming documents.

Funding Source		Program						Transit Capital		Local Match 20.00%	
Cost Year*	Preliminary Engineering	Preliminary Engineering Consulting	Right-of-Way	Utilities	Construction Engineering	Construction	Total	Federal Share	Local Share		
2020	0	0	0	0	0	195	195	156	39		
Fund Totals:	\$0	\$0	\$0	\$0	\$0	\$195	\$195	\$156	\$39		

Transit Asset Management, Boise Area, VRT

Key # : 18788

COMPASS PM:

Federal PM:

Requesting Agency: Valley Regional Transit

Transportation Infrastructure



Project Year: 2020-PD

Total Previous Expenditures: \$0

Total Programmed Cost: \$1,703

Total Cost (Prev. + Prog.): \$1,703

Project Description : Fund capital projects identified in the Transit Asset Management Plan in the Boise Urbanized Area.



Funding Source		FTA 5307 LU		Program				Transit Capital		Local Match 20.00%	
Cost Year*	Preliminary Engineering	Preliminary Engineering Consulting	Right-of-Way	Utilities	Construction Engineering	Construction	Total	Federal Share	Local Share		
2020	0	0	0	0	0	558	558	446	112		
2021	0	0	0	0	0	229	229	183	46		
2022	0	0	0	0	0	229	229	183	46		
2023	0	0	0	0	0	229	229	183	46		
2024	0	0	0	0	0	229	229	183	46		
PD	0	0	0	0	0	229	229	183	46		
Fund Totals:	\$0	\$0	\$0	\$0	\$0	\$1,703	\$1,703	\$1,362	\$341		

Transit Asset Management, Boise Area, VRT

Key # : 19122

COMPASS PM:

Federal PM:

Requesting Agency: Valley Regional Transit

Transportation Infrastructure



Project Year: 2020-PD

Total Previous Expenditures: \$0

Total Programmed Cost: \$4,164

Total Cost (Prev. + Prog.): \$4,164

Project Description : Fund capital projects identified in the Transit Asset Management Plan in the Boise Urbanized Area.



Funding Source		FTA 5339 LU		Program				Transit Capital		Local Match 20.00%	
Cost Year*	Preliminary Engineering	Preliminary Engineering Consulting	Right-of-Way	Utilities	Construction Engineering	Construction	Total	Federal Share	Local Share		
2020	0	0	0	0	0	694	694	555	139		
2021	0	0	0	0	0	694	694	555	139		
2022	0	0	0	0	0	694	694	555	139		
2023	0	0	0	0	0	694	694	555	139		
2024	0	0	0	0	0	694	694	555	139		
PD	0	0	0	0	0	694	694	555	139		
Fund Totals:	\$0	\$0	\$0	\$0	\$0	\$4,164	\$4,164	\$3,331	\$833		

*PD = Preliminary Development (projects with development activity but no programmed year of construction)

Transit Asset Management, Boise Area, VRT

Key # : NEW

COMPASS PM:

Federal PM:

Requesting Agency: Valley Regional Transit

Maintenance



Project Year: 2020

Total Previous Expenditures: \$0

Total Programmed Cost: \$3,750

Total Cost (Prev. + Prog.): \$3,750

Project Description : Fund capital projects identified in the Transit Asset Management Plan in the Boise Urbanized Area.



Funding Source		Program						Local Match 20.00%	
Cost Year*	Preliminary Engineering	Preliminary Engineering Consulting	Right-of-Way	Utilities	Construction Engineering	Construction	Total	Federal Share	Local Share
2020	0	0	0	0	0	3,750	3,750	3,000	750
Fund Totals:	\$0	\$0	\$0	\$0	\$0	\$3,750	\$3,750	\$3,000	\$750

Transit Asset Management, Boise Area, VRT - FY2020

Key # : 19057

COMPASS PM:

Federal PM:

Requesting Agency: Valley Regional Transit

Transportation Infrastructure



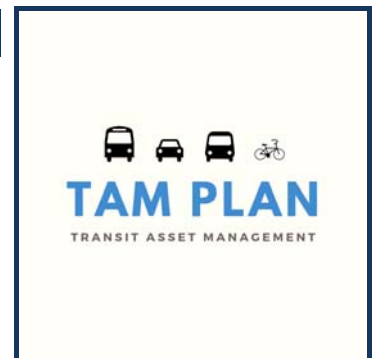
Project Year: 2020

Total Previous Expenditures: \$0

Total Programmed Cost: \$1,575

Total Cost (Prev. + Prog.): \$1,575

Project Description : Fund capital projects identified in the Transit Asset Management Plan in 2020 in the Boise Urbanized Area.



Funding Source		Program						Local Match 7.34%	
Cost Year*	Preliminary Engineering	Preliminary Engineering Consulting	Right-of-Way	Utilities	Construction Engineering	Construction	Total	Federal Share	Local Share
2020	0	0	0	0	0	1,575	1,575	1,459	116
Fund Totals:	\$0	\$0	\$0	\$0	\$0	\$1,575	\$1,575	\$1,459	\$116

Transit Asset Management, Boise Area, VRT - FY2021

Key # : 18905

COMPASS PM:

Federal PM:

Requesting Agency: Valley Regional Transit

Transportation Infrastructure



Project Year: 2021

Total Previous Expenditures: \$0

Total Programmed Cost: \$1,542

Total Cost (Prev. + Prog.): \$1,542

Project Description : Fund capital projects identified in the Transit Asset Management Plan in FY2021 in the Boise Urbanized Area.



Funding Source		Program						Local Match 7.34%	
Cost Year*	Preliminary Engineering	Preliminary Engineering Consulting	Right-of-Way	Utilities	Construction Engineering	Construction	Total	Federal Share	Local Share
2021	0	0	0	0	0	1,542	1,542	1,429	113
Fund Totals:	\$0	\$0	\$0	\$0	\$0	\$1,542	\$1,542	\$1,429	\$113

*PD = Preliminary Development (projects with development activity but no programmed year of construction)

Transit Asset Management, Boise Area, VRT - FY2022

Key # : 19763

COMPASS PM:

Federal PM:

Requesting Agency: Valley Regional Transit

Transportation Infrastructure



Project Year: 2022

Total Previous Expenditures: \$0

Total Programmed Cost: \$1,511

Total Cost (Prev. + Prog.): \$1,511

Project Description : Fund capital projects identified in the Transit Asset Management Plan in FY2022 in the Boise Urbanized Area.



Funding Source STP-TMA			Program Local Hwy - Transportation Management Area					Local Match 7.34%	
Cost Year*	Preliminary Engineering	Preliminary Engineering Consulting	Right-of-Way	Utilities	Construction Engineering	Construction	Total	Federal Share	Local Share
2022	0	0	0	0	0	1,511	1,511	1,400	111
Fund Totals:	\$0	\$0	\$0	\$0	\$0	\$1,511	\$1,511	\$1,400	\$111

Transit Asset Management, Boise Area, VRT - FY2023

Key # : 19950

COMPASS PM:

Federal PM:

Requesting Agency: Valley Regional Transit

Transportation Infrastructure



Project Year: 2023

Total Previous Expenditures: \$0

Total Programmed Cost: \$1,480

Total Cost (Prev. + Prog.): \$1,480

Project Description : Fund capital projects identified in the Transit Asset Management Plan in FY2023 in the Boise Urbanized Area.



Funding Source STP-TMA			Program Local Hwy - Transportation Management Area					Local Match 7.34%	
Cost Year*	Preliminary Engineering	Preliminary Engineering Consulting	Right-of-Way	Utilities	Construction Engineering	Construction	Total	Federal Share	Local Share
2023	0	0	0	0	0	1,480	1,480	1,371	109
Fund Totals:	\$0	\$0	\$0	\$0	\$0	\$1,480	\$1,480	\$1,371	\$109

Transit Asset Management, Boise Area, VRT - FY2024

Key # : 20659

COMPASS PM:

Federal PM:

Requesting Agency: Valley Regional Transit

Transportation Infrastructure



Project Year: 2024

Total Previous Expenditures: \$0

Total Programmed Cost: \$1,449

Total Cost (Prev. + Prog.): \$1,449

Project Description : Fund capital projects identified in the Transit Asset Management Plan in FY2024 in the Boise Urbanized Area.



Funding Source STP-TMA			Program Local Hwy - Transportation Management Area					Local Match 7.34%	
Cost Year*	Preliminary Engineering	Preliminary Engineering Consulting	Right-of-Way	Utilities	Construction Engineering	Construction	Total	Federal Share	Local Share
2024	0	0	0	0	0	1,449	1,449	1,343	106
Fund Totals:	\$0	\$0	\$0	\$0	\$0	\$1,449	\$1,449	\$1,343	\$106

*PD = Preliminary Development (projects with development activity but no programmed year of construction)

Transit Asset Management, Boise Area, VRT - FY2025

Key # : 21903

COMPASS PM:
Transportation Infrastructure

Federal PM:



Requesting Agency: Valley Regional Transit
Project Year: 2025
Total Previous Expenditures: \$0
Total Programmed Cost: \$1,449
Total Cost (Prev. + Prog.): \$1,449

Project Description : Fund capital projects identified in the Transit Asset Management Plan in FY2025 in the Boise Urbanized Area.



Funding Source STP-TMA			Program Local Hwy - Transportation Management Area					Local Match 7.34%	
Cost Year*	Preliminary Engineering	Preliminary Engineering Consulting	Right-of-Way	Utilities	Construction Engineering	Construction	Total	Federal Share	Local Share
2025	0	0	0	0	0	1,449	1,449	1,343	106
Fund Totals:	\$0	\$0	\$0	\$0	\$0	\$1,449	\$1,449	\$1,343	\$106

Transit Asset Management, Boise Area, VRT - FY2026

Key # : ORN22393

COMPASS PM:
Transportation Infrastructure

Federal PM:



Requesting Agency: Valley Regional Transit
Project Year: 2026
Total Previous Expenditures: \$0
Total Programmed Cost: \$1,449
Total Cost (Prev. + Prog.): \$1,449

Project Description : Fund capital projects identified in the Transit Asset Management Plan in FY2026 in the Boise Urbanized Area.



Funding Source STP-TMA			Program Local Hwy - Transportation Management Area					Local Match 7.34%	
Cost Year*	Preliminary Engineering	Preliminary Engineering Consulting	Right-of-Way	Utilities	Construction Engineering	Construction	Total	Federal Share	Local Share
2026	0	0	0	0	0	1,449	1,449	1,343	106
Fund Totals:	\$0	\$0	\$0	\$0	\$0	\$1,449	\$1,449	\$1,343	\$106

*PD = Preliminary Development (projects with development activity but no programmed year of construction)

Transit Asset Management, Nampa Area, VRT

Key # : 18781

Requesting Agency: Valley Regional Transit

Project Year: 2020-PD

Total Previous Expenditures: \$0

Total Programmed Cost: \$8,478

Total Cost (Prev. + Prog.): \$8,478

Project Description : Fund capital projects identified in the Transit Asset Management Plan in the Nampa Urbanized Area.

COMPASS PM:

Transportation Infrastructure
Support

Federal PM:



Funding Source		Program						Local Match 20.00%	
Cost Year*	Preliminary Engineering	Preliminary Engineering Consulting	Right-of-Way	Utilities	Construction Engineering	Construction	Total	Federal Share	Local Share
2020	0	0	0	0	0	1,413	1,413	1,130	283
2021	0	0	0	0	0	1,413	1,413	1,130	283
2022	0	0	0	0	0	1,413	1,413	1,130	283
2023	0	0	0	0	0	1,413	1,413	1,130	283
2024	0	0	0	0	0	1,413	1,413	1,130	283
PD	0	0	0	0	0	1,413	1,413	1,130	283
Fund Totals:	\$0	\$0	\$0	\$0	\$0	\$8,478	\$8,478	\$6,782	\$1,696

Transit Asset Management, Nampa Area, VRT

Key # : 20136e

Requesting Agency: Valley Regional Transit

Project Year: 20202-2021

Total Previous Expenditures: \$0

Total Programmed Cost: \$359

Total Cost (Prev. + Prog.): \$359

Project Description : Fund capital projects identified in the Transit Asset Management Plan in the Nampa Urbanized Area. FY2018 and FY2019 funds carried to FY2020.

COMPASS PM:

Transportation Infrastructure

Federal PM:



Funding Source		Program						Local Match 20.00%	
Cost Year*	Preliminary Engineering	Preliminary Engineering Consulting	Right-of-Way	Utilities	Construction Engineering	Construction	Total	Federal Share	Local Share
2020	0	0	0	0	0	278	278	222	56
2021	0	0	0	0	0	81	81	65	16
Fund Totals:	\$0	\$0	\$0	\$0	\$0	\$359	\$359	\$287	\$72

*PD = Preliminary Development (projects with development activity but no programmed year of construction)

Transit Asset Management, Nampa Area, VRT - FY2020

Key # : 13906

Requesting Agency: Valley Regional Transit

Project Year: 2020

Total Previous Expenditures: \$0

Total Programmed Cost: \$159

Total Cost (Prev. + Prog.): \$159

Project Description : Fund capital projects identified in the Transit Asset Management Plan in FY2020 in the Nampa Urbanized Area.

COMPASS PM:

Transportation Infrastructure

Federal PM:



Funding Source		STP-U		Program				Local Hwy - Urban		Local Match 7.34%	
Cost Year*	Preliminary Engineering	Preliminary Engineering Consulting	Right-of-Way	Utilities	Construction Engineering	Construction	Total	Federal Share	Local Share		
2020	0	0	0	0	0	159	159	147	12		
Fund Totals:	\$0	\$0	\$0	\$0	\$0	\$159	\$159	\$147	\$12		

US 20/26 (Chinden), I-84 to Middleton Road, Canyon County

Key # : 22165

Requesting Agency: ITD

Project Year: 2022

Total Previous Expenditures: \$225

Total Programmed Cost: \$34,400

Total Cost (Prev. + Prog.): \$34,625

Project Description : Widen US 20/26 (Chinden Boulevard) from I-84 to Middleton Road to six lanes in the City of Caldwell.

COMPASS PM:

Congestion Reduction/System Reliability

Freight Movement and Economic Vitality

Transportation Safety

Community Infrastructure

Federal PM:



Funding Source		TECM		Program				State Hwy - Safety & Capacity (Capacity)		Local Match 100.00%	
Cost Year*	Preliminary Engineering	Preliminary Engineering Consulting	Right-of-Way	Utilities	Construction Engineering	Construction	Total	Federal Share	Local Share		
2021	200	2,000	10,000	0	2,200	0	14,400	0	14,400		
2022	0	0	0	0	0	20,000	20,000	0	20,000		
Fund Totals:	\$200	\$2,000	\$10,000	\$0	\$2,200	\$20,000	\$34,400	\$0	\$34,400		

*PD = Preliminary Development (projects with development activity but no programmed year of construction)

US 20/26 (Chinden), Linder Road to Locust Grove, Meridian and Eagle

Key # : 20594

Requesting Agency: Private Developer

Project Year: 2020

Total Previous Expenditures: \$2,750

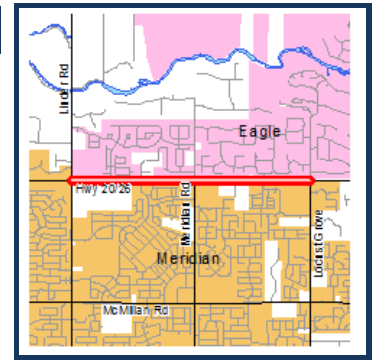
Total Programmed Cost: \$10,200

Total Cost (Prev. + Prog.): \$12,950

COMPASS PM:

Freight Movement and Economic Vitality
 Transportation Safety
 Congestion Reduction/System Reliability
 Community Infrastructure

Federal PM:



Project Description : Widen US 20/26 (Chinden Boulevard) from Linder Road to Locust Grove Road in the Cities of Meridian and Eagle. An additional lane in both directions will improve congestion issues. Work also includes improvements to existing intersections. Project is funded and constructed by a private developer using State Tax Anticipated Revenue (STAR) funds.

Funding Source		State		Program			State Forces		Local Match 100.00%	
Cost Year*	Preliminary Engineering	Preliminary Engineering Consulting	Right-of-Way	Utilities	Construction Engineering	Construction	Total	Federal Share	Local Share	
2020	10	0	0	0	10	0	20	0	20	
Fund Totals:	\$10	\$0	\$0	\$0	\$10	\$0	\$20	\$0	\$20	

Funding Source		Local Participating		Program			Hwy - Local Partnerships		Local Match 100.00%	
Cost Year*	Preliminary Engineering	Preliminary Engineering Consulting	Right-of-Way	Utilities	Construction Engineering	Construction	Total	Federal Share	Local Share	
2020	0	0	0	0	850	0	850	0	850	
Fund Totals:	\$0	\$0	\$0	\$0	\$850	\$0	\$850	\$0	\$850	

Funding Source		STAR		Program			External to ITD Financials		Local Match 100.00%	
Cost Year*	Preliminary Engineering	Preliminary Engineering Consulting	Right-of-Way	Utilities	Construction Engineering	Construction	Total	Federal Share	Local Share	
2020	0	0	0	0	850	8,480	9,330	0	9,330	
Fund Totals:	\$0	\$0	\$0	\$0	\$850	\$8,480	\$9,330	\$0	\$9,330	

US 20/26 (Chinden), Locust Grove Road to SH-55 (Eagle Road), Ada County

Key # : 19944

Requesting Agency: ITD

Project Year: 2020

Total Previous Expenditures: \$4,372

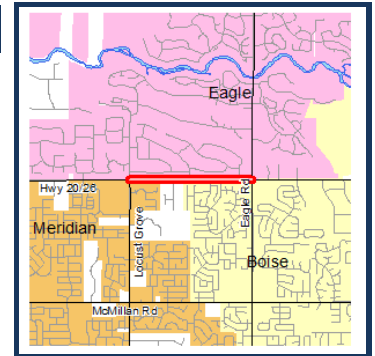
Total Programmed Cost: \$9,000

Total Cost (Prev. + Prog.): \$13,372

COMPASS PM:

Transportation Safety
 Freight Movement and Economic Vitality
 Congestion Reduction/System Reliability
 Community Infrastructure

Federal PM:



Project Description : Widen US 20/26 (Chinden Boulevard) between Locust Grove Road and SH-55 (Eagle Road) in the Cities of Boise, Eagle, and Meridian.

Funding Source		TECM		Program			State Hwy - Safety & Capacity (Safety)		Local Match 100.00%	
Cost Year*	Preliminary Engineering	Preliminary Engineering Consulting	Right-of-Way	Utilities	Construction Engineering	Construction	Total	Federal Share	Local Share	
2020	0	0	0	0	500	8,500	9,000	0	9,000	
Fund Totals:	\$0	\$0	\$0	\$0	\$500	\$8,500	\$9,000	\$0	\$9,000	

*PD = Preliminary Development (projects with development activity but no programmed year of construction)

US 20/26 (Chinden), Phyllis Canal, Bridge Rehabilitation, near Meridian

Key # : 20227

Requesting Agency: ITD

Project Year: 2023

Total Previous Expenditures: \$650

Total Programmed Cost: \$2,925

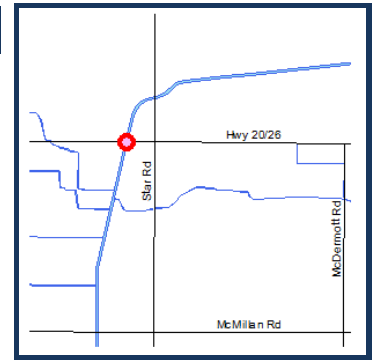
Total Cost (Prev. + Prog.): \$3,575

Project Description : Replace a culvert on US 20/26 (Chinden Boulevard) at the Phyllis Canal near the City of Meridian due to restrictions for freight.

COMPASS PM:

Transportation Safety
 Freight Movement and Economic Vitality
 Transportation Infrastructure
 Farmland
 Community Infrastructure

Federal PM:



Funding Source NHPP			Program State Hwy - Bridge Restoration					Local Match 7.34%	
Cost Year*	Preliminary Engineering	Preliminary Engineering Consulting	Right-of-Way	Utilities	Construction Engineering	Construction	Total	Federal Share	Local Share
2020	0	100	0	0	0	0	100	93	7
2023	0	0	0	0	275	2,550	2,825	2,618	207
Fund Totals:	\$0	\$100	\$0	\$0	\$275	\$2,550	\$2,925	\$2,710	\$215

US 20/26 (Chinden), SH-16 to Linder Road, Ada County

Key # : 21858

Requesting Agency: Private Developer

Project Year: 2019-2020

Total Previous Expenditures: \$12,017

Total Programmed Cost: \$13,010

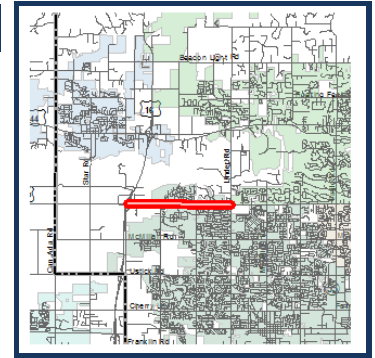
Total Cost (Prev. + Prog.): \$25,027

Project Description : Widen US 20/26 (Chinden Boulevard) from SH-16 to the existing five-lane section, approximately 700 feet to the west of Linder Road to five lanes (two through lanes in each direction and a two way left center turn lane). The project will include turn lanes and raised medians where necessary. Project funded and constructed by the developer of the Costco shopping center using State Tax Anticipated Revenue (STAR) financing.

COMPASS PM:

Congestion Reduction/System Reliability
 Freight Movement and Economic Vitality
 Transportation Safety
 Community Infrastructure

Federal PM:



Funding Source STAR			Program External to ITD Financials					Local Match 100.00%	
Cost Year*	Preliminary Engineering	Preliminary Engineering Consulting	Right-of-Way	Utilities	Construction Engineering	Construction	Total	Federal Share	Local Share
2020	0	0	0	0	10	13,000	13,010	0	13,010
Fund Totals:	\$0	\$0	\$0	\$0	\$10	\$13,000	\$13,010	\$0	\$13,010

*PD = Preliminary Development (projects with development activity but no programmed year of construction)

US 20/26 (Chinden), Star Road to SH-16, Ada County

Key # : 20367

Requesting Agency: ITD

Project Year: 2023

Total Previous Expenditures: \$150

Total Programmed Cost: \$5,400

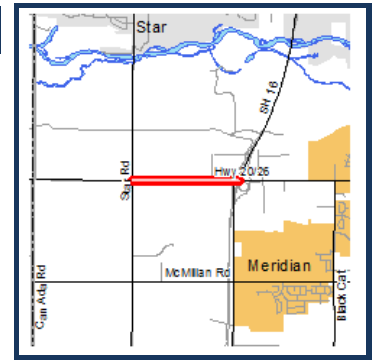
Total Cost (Prev. + Prog.): \$5,550

Project Description : Widen US 20/26 (Chinden Boulevard) from Star Road to SH-16 in Ada County. The project will add one additional lane in both directions.

COMPASS PM:

- Congestion Reduction/System Reliability
- Freight Movement and Economic Vitality
- Transportation Safety
- Community Infrastructure

Federal PM:



Funding Source		TECM		Program				State Hwy - Safety & Capacity (Capacity)		Local Match 7.34%	
Cost Year*	Preliminary Engineering	Preliminary Engineering Consulting	Right-of-Way	Utilities	Construction Engineering	Construction	Total	Federal Share	Local Share		
2023	0	0	1,000	0	400	4,000	5,400	5,004	396		
Fund Totals:	\$0	\$0	\$1,000	\$0	\$400	\$4,000	\$5,400	\$5,004	\$396		

*PD = Preliminary Development (projects with development activity but no programmed year of construction)