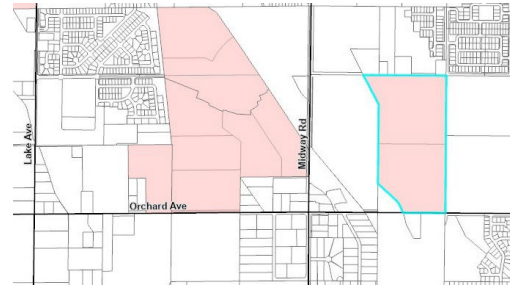


Communities in Motion (CIM) Development Review Checklist

Development Name: Ederra
CIM Vision Category: Existing Neighborhood
Consistent with CIM Vision? YES
New Households: 650 **New Jobs:** ±55

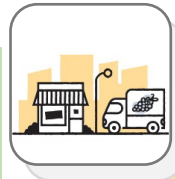


Safety
 How safe and comfortable is the nearest major road (minor arterial or above) for bicyclists and pedestrians? Analysis is limited to existing roadway conditions.

Orchard Avenue

Pedestrian level of stress

Bicycle level of stress



Economic Vitality
 To what extent does the project enable people, government, and businesses to prosper?

Economic Activity Center Access

Impact on Existing Surrounding Farmland

Net Fiscal Impact



Convenience
 What services are available within 0.5 miles (green) or 1 mile (yellow) of the project?

Nearest bus stop

Nearest public school

Nearest public park



Quality of Life
 Checked boxes indicate that additional information is attached.

Active Transportation

Automobile Transportation

Public Transportation

Roadway Projects



Improves performance



Does not improve or reduce performance



Reduces performance

Comments:

Checklist above is regarding the entire master planned community. Comments below are specific to the provided preliminary plat. Consider adding landscape islands and designated walking paths connecting residential and commercial areas to encourage walking and cycling trips.

Who we are: The Community Planning Association of Southwest Idaho (COMPASS) is the metropolitan planning organization for Ada and Canyon Counties. This review evaluates whether land developments are consistent with *Communities in Motion*, the regional long-range transportation plan for Ada and Canyon Counties. This checklist is not intended to be prescriptive, but rather a guidance document. Past checklists are available [online](#). See the [Development Review User Guide](#) for more information on the red, yellow, and green checklist thresholds.



Complete Network Appendix

Checkmarks (✓) below indicate suggested changes to a site plan, based on the [COMPASS Complete Network Policy \(No. 2022-01\)](#). Both the Complete Network Policy and site-specific suggestions are intended to better align land use with identified transportation uses in the corridor. Please see the Complete Network [map](#) for primary and secondary uses for roadways (minor arterial and above) in Ada and Canyon Counties.

Corridor Name:	Orchard Avenue
Primary Use:	N/A
Secondary Use:	N/A

Bicycle and Pedestrian Infrastructure

- ✓ Apply traffic calming measures to discourage speeding on local roads
- ✓ Provide sufficient and covered bike parking near destinations
- ✓ Reduce street lengths to discourage speeding on local roads

Parking Management

- ✓ Improve walking and cycling infrastructure to make them feasible alternatives to driving and parking
- ✓ Add landscape islands and designated walking paths to enable safe and comfortable paths to businesses

Fiscal Impact Analysis

Below are the expected revenues and costs to local governments from this project. The purpose of this analysis is to help the public, stakeholders, and the decision-makers better manage growth.

Capital and operating expenditures are determined based on service and infrastructure needs, including persons per household, student generation rates, lot sizes, street frontages, vehicle trip and trip adjustment factors, average trip lengths, construction values, income, discretionary spending, and employment densities.

Net Fiscal Impact by Agency



City



County



Highway District



School District

Breakeven point across all agencies: 2 Years

Disclaimer: This tool only looks out 20 years and does not include replacement costs for infrastructure, public utilities, or unfunded transportation needs in the project area. More information about the COMPASS Fiscal Impact Tool is available at: <https://compassidaho.org/fiscal-impact-tool/>