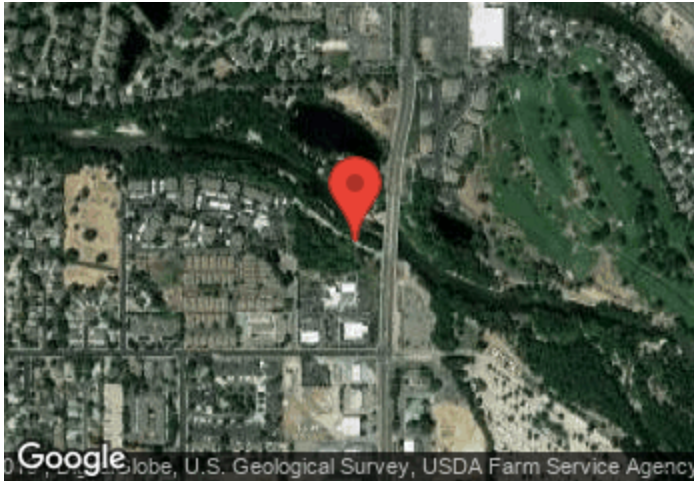


Garden City

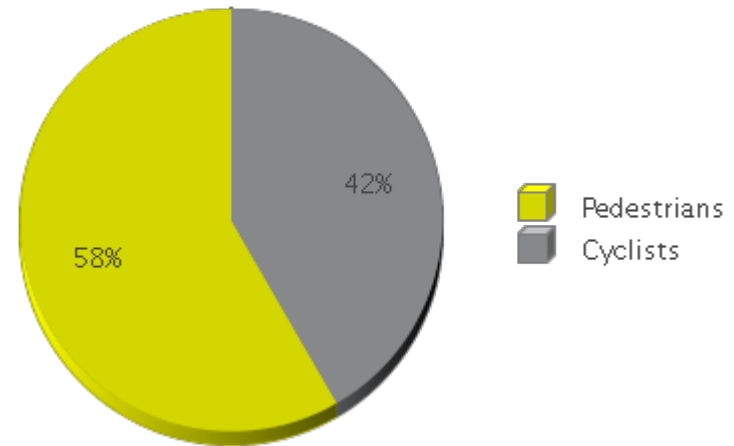
Period Analyzed: Monday, January 01, 2018 to Monday, December 31, 2018



	Total Traffic for the Analyzed Period	Daily Average	Busiest Day of the Week	Busiest Month of the Year	Distribution	
					IN	OUT
Pedestrians	110,915	305	Sunday	July 18: 14,271	66	34
Cyclists	79,209	218	Sunday	July 18: 13,373	51	49

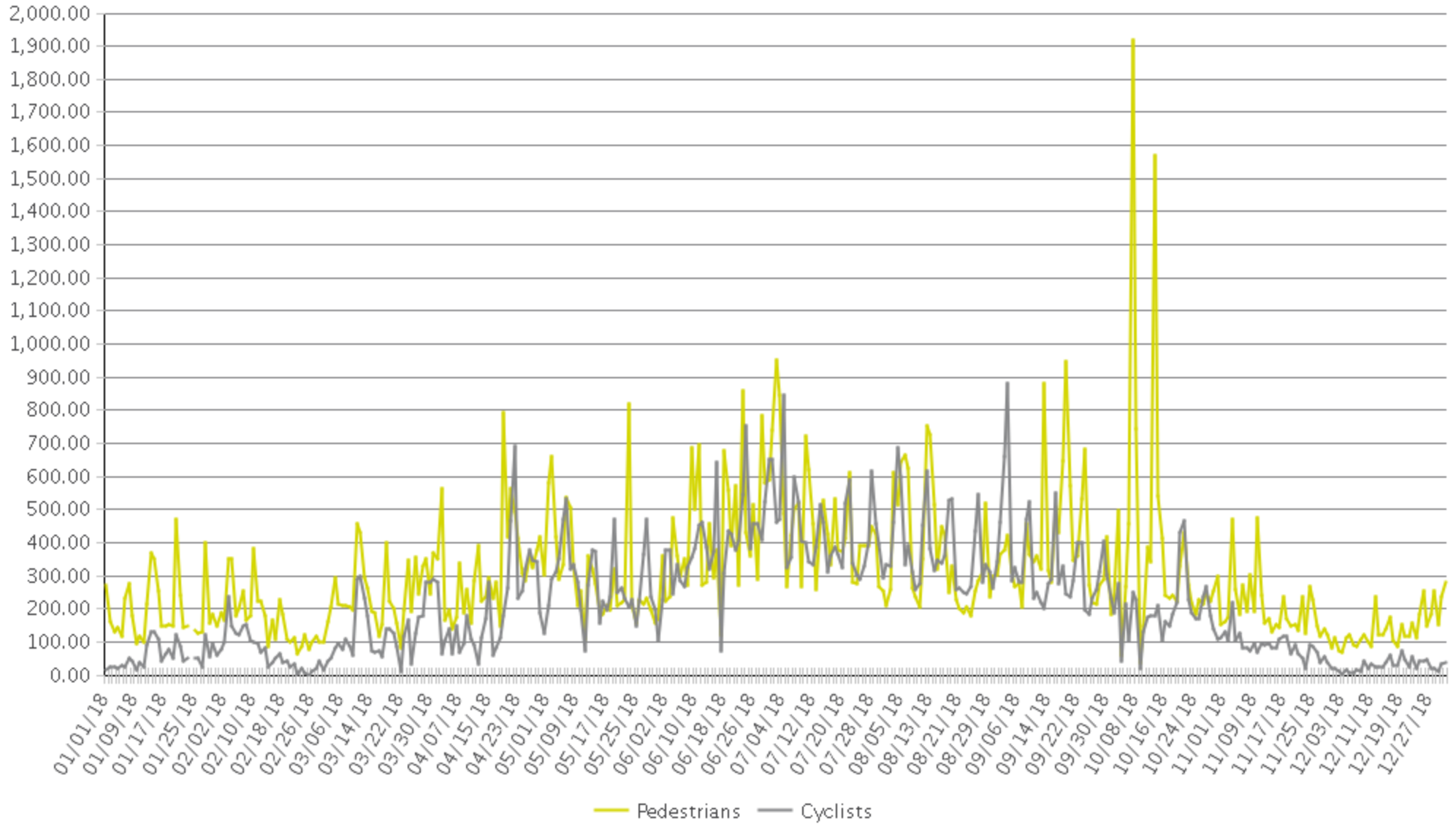
IN: East

OUT: West



Garden City

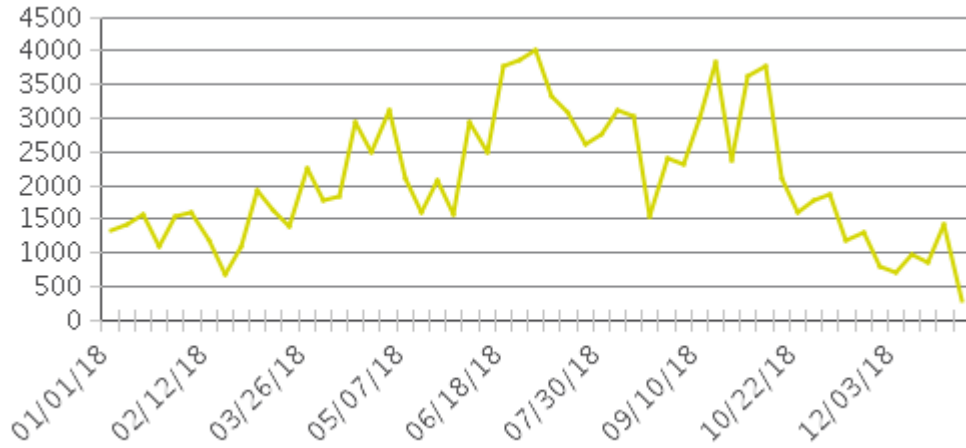
Period Analyzed: Monday, January 01, 2018 to Monday, December 31, 2018



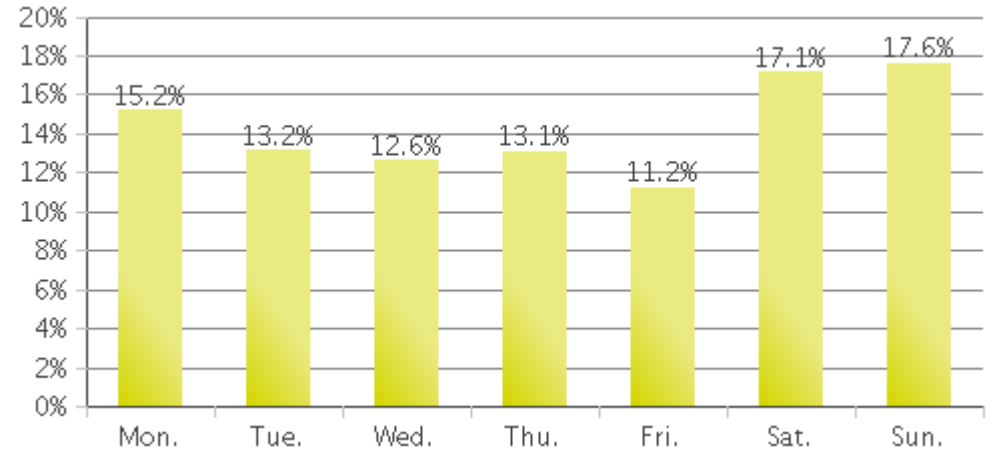
Garden City (Pedestrians)

Period Analyzed: Monday, January 01, 2018 to Monday, December 31, 2018

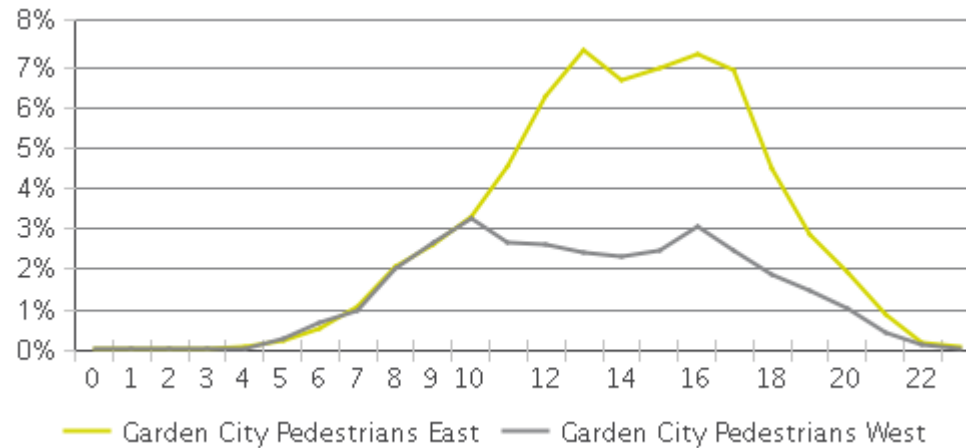
Weekly Traffic



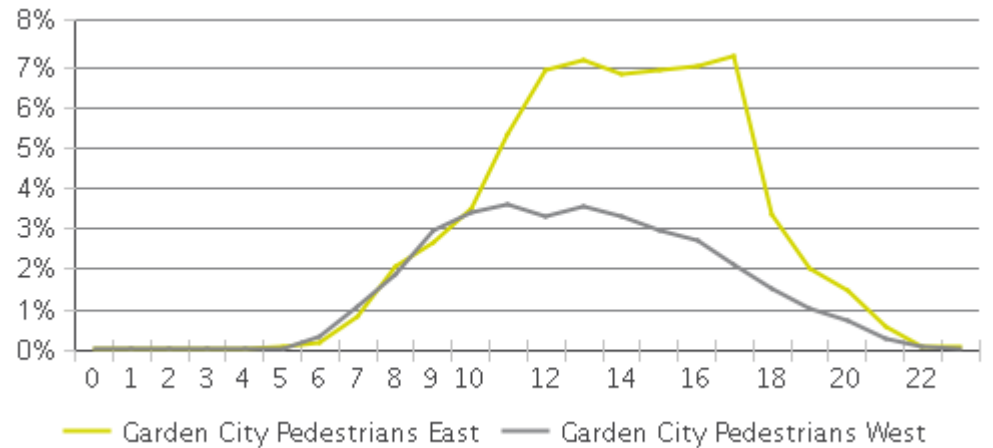
Weekly Profile



Hourly Profile during Weekdays



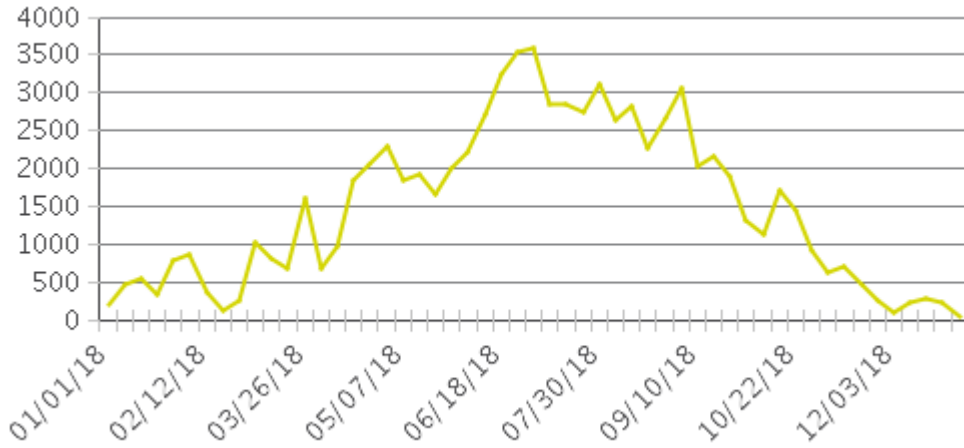
Hourly Profile during the Weekend



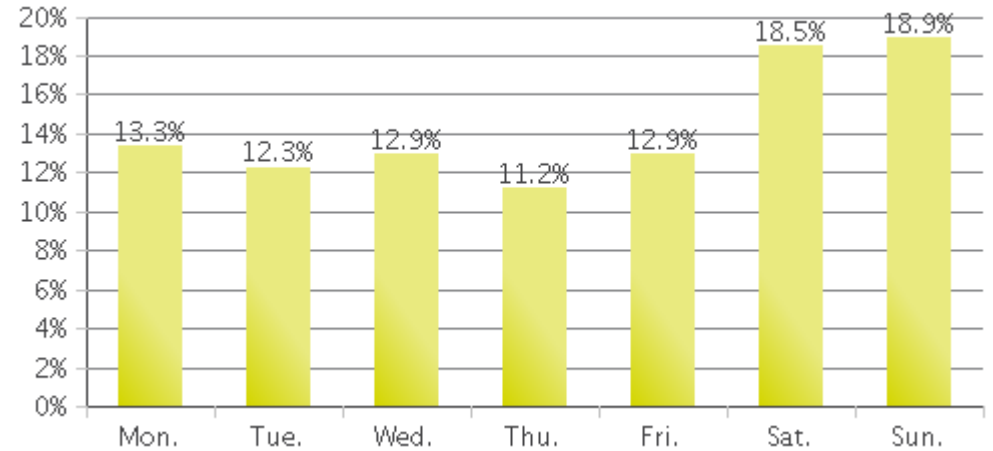
Garden City (Cyclists)

Period Analyzed: Monday, January 01, 2018 to Monday, December 31, 2018

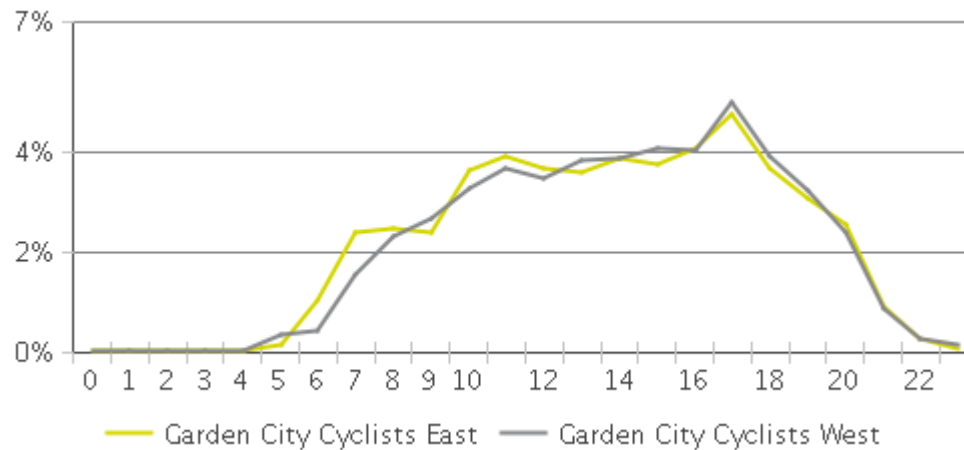
Weekly Traffic



Weekly Profile



Hourly Profile during Weekdays



Hourly Profile during the Weekend

