



# Evacuate Now!

## Evacuation Risk Assessment & Gap Analysis

Gary Gleason

Vice President

**nusura**

## Gary Gleason

- Vice President, Nusura
- Associate Staff, Transportation Safety Institute
- Fulbright Scholar, Civil Protection

[gary.gleason@nusura.com](mailto:gary.gleason@nusura.com)

970.948.7680



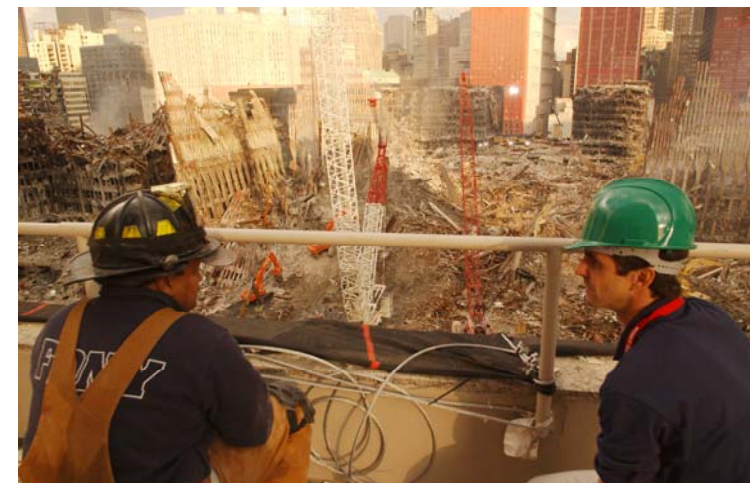
## Agenda

- Framework
- Vulnerability Assessment
- Continuity of Operations
- The Role of Transportation
- Conclusions/Discussion



## Definitions

- Safety
- Security
- Emergency Management



## Assessing Vulnerability

- Accidents
- Acts of Nature
- Hazardous Materials
- Critical Infrastructure
- Criminal Activity
- Terrorism



## Assessing Vulnerability

- Historical Analysis
- Physical Analysis
- Expert Evaluation
- Scenario Analysis



## Accidents and Incidents

- Vehicle Accidents
- Passenger Incidents
- Employee Incidents
- Fire



## Acts of Nature

- Flooding
- Winter Storms
- Tornadoes
- Wildfire
- Earthquake
- Landslides/Avalanches
- Dust Storms
- Fog





## Critical Infrastructure

- Power Outages
- Computer Crash/Cyber Attack
- Communication Systems
- Supply Chain Interruption
- Facility Loss
- Staff Shortage
- Employee Malfeasance



## Hazardous Materials

- Bloodborne Pathogens
- Fuel Spills/Releases
- Blister Agents
- Pulmonary Agents
- Neurological Agents
- Radiological Emergencies



## Criminal Activity

- Trespassing
- Vandalism/Criminal Mischief
- Workplace Violence
- Commandeered Vehicle
- Bomb Threat



## Terrorist Attack

- Dangerous Mail
- Suicide Bomber
- Improvised Explosive Device
- Weapon of Mass Destruction



## Emergency Management

- Prepare
- Prevent
- Respond
- Recover



## Hazard/Threat Levels

- Severe
- Elevated
- Guarded
- Low



## Preparedness

- Planning
- Training
- Exercises



## Prevention

- Gather Information
- Communicate Risks
- Strengthen Security
- Identify Resource Needs
- Establish Contingency Plans
- Pre-Position Resources
- Coordinate with Partner Agencies





## Response

- Activate Response Team
- Deploy Response Resources
- Make Service Adjustments
- Make Proper Notifications



## Recovery

- Reconstitution
- Service Modification
- Repair/Replace Disaster Damaged Assets
- Conduct After Action Analysis
- Institute Changes



## Operational Continuity

- Essential Mission
- Essential Functions
- Essential Resources

## Critical Assets

- People
- Information
- Property



## COOP Planning

- Continuity of Management
- Service Suspension Thresholds
- Service Suspension Protocols
- Service Resumption Thresholds
- Service Resumption Protocols

## Evacuation Thresholds

Orange County Evacuation Plan - Evacuation Level Definitions		
<u>Evacuation Level</u>	<u>Parameters</u>	<u>Examples</u>
<p><b>Low</b>                      Managed by local jurisdiction                      Monitored by OA</p>	<p>Incident impacts within just one municipality                      &gt; 5,000 evacuees</p>	<ul style="list-style-type: none"> <li>- Structural fire</li> <li>- Bomb/bomb threat</li> <li>- Hostage situation</li> <li>- Hazmat spill</li> <li>- Mudslide</li> <li>- Aviation accident</li> </ul>
<p><b>Moderate</b>                      Mutual aid required                      County Disaster Declaration likely                      State Disaster Declaration possible</p>	<p>Incident impacts affect multiple jurisdictions                      5,000-25,000 evacuees</p>	<ul style="list-style-type: none"> <li>- Wildfire</li> <li>- Flood</li> <li>- Earthquake</li> <li>- Tsunami</li> <li>- Stage II power failure</li> <li>- Industrial accident</li> <li>- Credible terror threat</li> <li>- Civil unrest riot</li> </ul>
<p><b>Severe</b>                      State Disaster Declaration                      Presidential Disaster Declaration Possible</p>	<p>Incident impacts are regional                      &lt; 25,000 evacuees</p>	<ul style="list-style-type: none"> <li>- Major wildfire</li> <li>- Major flood</li> <li>- Dam failure</li> <li>- Dirty bomb</li> <li>- Nuclear release</li> <li>- Earthquake &lt; 6.5</li> </ul>

## Evacuation Objectives

- Access Control
- Expedite Movement  
(People, Animals, Goods)
- Assure Safe Reentry



## Transportation Strategies

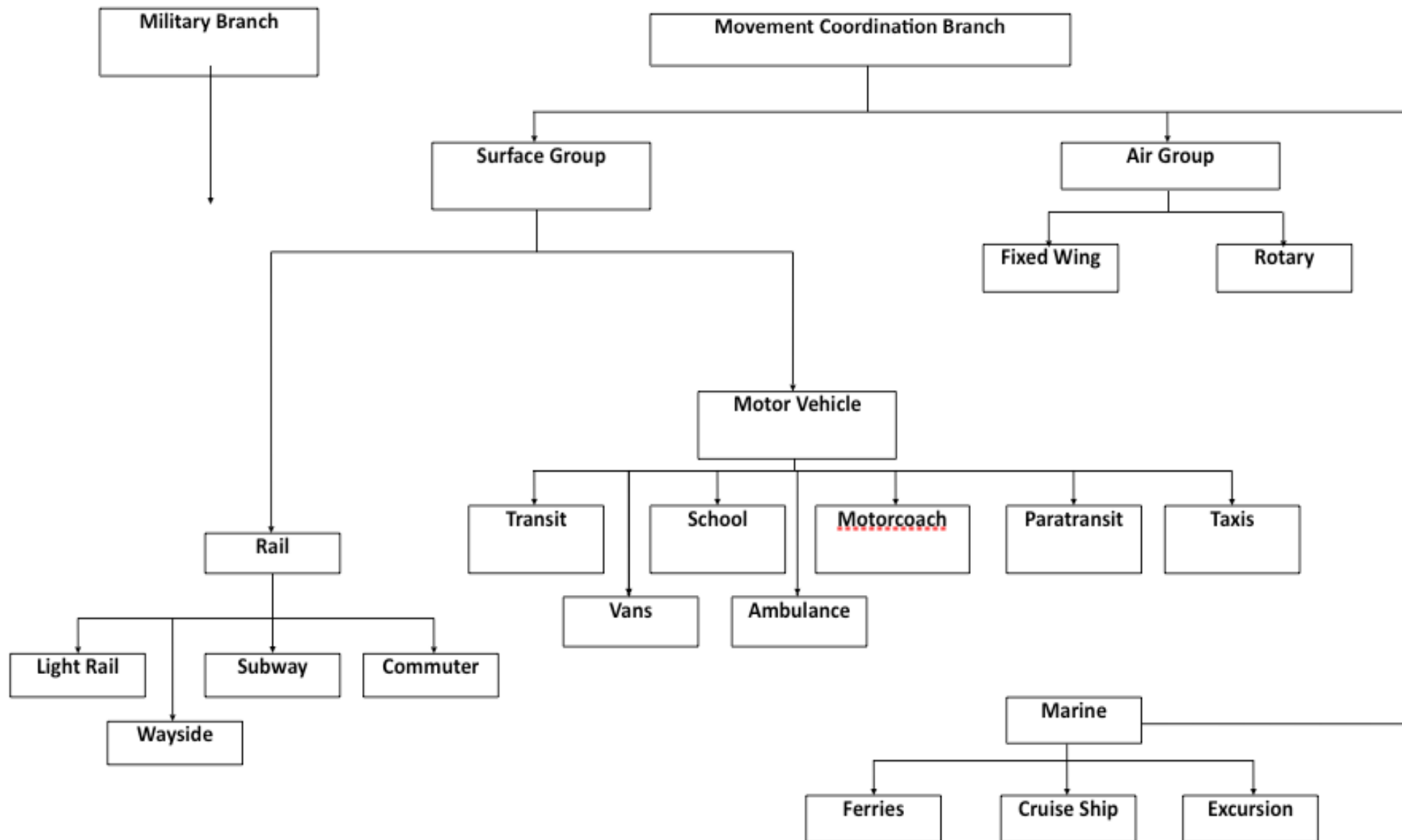
- Traffic Signal Coordination
- Intelligent Transportation Systems
- Route Designation
- Contraflow
- Segregation of Cars and People
- Freeway Patrol Services



## Concept of Operations

- Transportation Management Teams
- Staging
- Embarkation Points
- Transportation Hubs
- Evacuee Manifesting and Tracking
- Evacuation Information
- Care and Shelter

## Connecting with the EOC



## Notice V. No Notice Events

- Staged/Progressive Evacuation
- Accounting for Shadow Evacuation
- Challenges of Advance Notice
- Challenges of No-Notice



## Internal Agreements

- Board Support
- Liability Coverage
- Staff Commitment
- Personal Preparedness



## Interagency Agreements

- ESF-1 Coordination
- Activation/Control of Assets
- Reimbursement/Mutual Aid



## Transportation Concerns

- Resource Typing
- Credentialing
- Surge Support
- Extended Service Area
- Pets and Service Animals
- Service Plan for Shelters
- Shelter Plan for Staff



## Personal Preparedness

- Situational Awareness
- Shelter Planning
- Food and Water
- Go Kits
- Reunification Plans
- Pets and Dependents



## Emerging Risks

- Globalization of Terrorism
- Climate Change
- Pandemic
- Power Cut





# nusura

*Evacuate Now!*

## Conclusions/Discussion

*Positive proof of global warming.*



# nusura

[gary.gleason@nusura.com](mailto:gary.gleason@nusura.com)

970.948.7680