

Communities in Motion 2040 2.0 Development Review

The Community Planning Association of Southwest Idaho (COMPASS) is the metropolitan planning organization (MPO) for Ada and Canyon Counties. COMPASS has developed this review as a tool for local governments to evaluate whether land developments are consistent with the goals of *Communities in Motion 2040 2.0* (CIM 2040), the regional long-range transportation plan for Ada and Canyon Counties. This checklist is not intended to be prescriptive, but rather a guidance document based on CIM 2040 2.0 goals.

Development Name: Gowen Village






Agency: Boise

CIM Vision Category: Existing Neighborhoods

New households: 271

New jobs: 0

Exceeds CIM forecast: No

	<p>CIM Corridor: Highway 21 Pedestrian level of stress: R Bicycle level of stress: R</p>	<p>Level of Stress considers facility type, number of vehicle lanes, and speed. Roads with G or PG ratings better support bicyclists and pedestrians of all ages and comfort levels.</p>
	<p>Housing within 1 mile: 930 Jobs within 1 mile: 8,550 Jobs/Housing Ratio: 9.2</p>	<p>A good jobs/housing balance – a ratio between 1 and 1.5 – reduces traffic congestion. Higher numbers indicate the need for more housing and lower numbers indicate an employment need.</p>
	<p>Nearest police station: >4 miles Nearest fire station: 0.4 miles</p>	<p>Developments within 1.5 miles of police and fire stations ensure that emergency services are more efficient and reduce the cost of these important public services.</p>
	<p>Farmland consumed: No Farmland within 1 mile: 253 acres</p>	<p>Farmland contributes to the local economy, creates additional jobs, and provides food security to the region. Development in farm areas decreases the productivity and sustainability of farmland.</p>
	<p>Nearest bus stop: 2.6 miles Nearest public school: 1.3 miles Nearest public park: 0.6 miles Nearest grocery store: 0.1 miles</p>	<p>Residents who live or work less than ½ mile from critical services have more transportation choices. Walking and biking reduces congestion by taking cars off the road, while supporting a healthy and active lifestyle.</p>

Recommendations

The location is an infill site in an employment-centric area, with thousands of jobs within a mile of the site. Additionally, it is within a walkable or bikeable distance to a public park and a grocery store. This location may reduce trip length and encourage bicycle and pedestrian use. The higher density is supportive of future bus service. ValleyConnect 2.0 proposes bus service along Highway 21, connecting Micron with the Boise Airport and destinations along Interstate 84 to downtown Nampa. The bus stop for that service would be near the intersection of Highway 21 and Grand Forest Drive. Work with Valley Regional Transit on design that would enable a potential bus stop and amenities.

The COMPASS Transportation Improvement Program identifies the widening of Highway 21 from Technology Way (near Micron) to Surprise Way (just west of the Boise River Bridge). See attachment (Key #20428).

More information about COMPASS and *Communities in Motion 2040 2.0*:

Web: www.compassidaho.org

Email info@compassidaho.org

More information about the development review process:

<http://www.compassidaho.org/dashboard/devreview.htm>



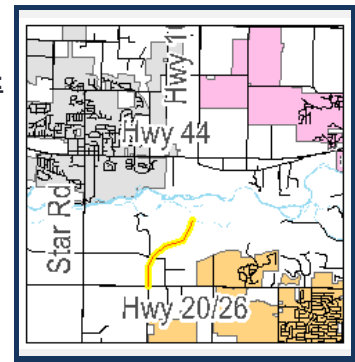
SH-16, Phyllis Canal Bridge & South STG

Regionally Significant: Inflated

COMPASS PM:

Federal PM:

Key #: 12917



Requesting Agency: ITD

Project Year:

Total Previous Expenditures: \$13,105

Total Programmed Cost: \$391

Total Cost (Prev. + Prog.): \$13,496

Project Description : SH 16, SH 44 (State Street) to US 20/26 (Chinden Boulevard) River Crossing.
This project includes a bridge over the Phyllis Canal and the South Phase.

Funding Source		STBG-State						Program		State Hwy - Restoration		Local Match 7.34%	
Cost Year*	Preliminary Engineering	Preliminary Engineering Consulting	Right-of-Way	Utilities	Construction Engineering	Construction	Total	Federal Share	Local Share				
2021	0	0	0	0	0	391	391	362	29				
Fund Totals:	\$0	\$0	\$0	\$0	\$0	\$391	\$391	\$362	\$29				

SH-21, Technology Way to Surprise Way, Boise

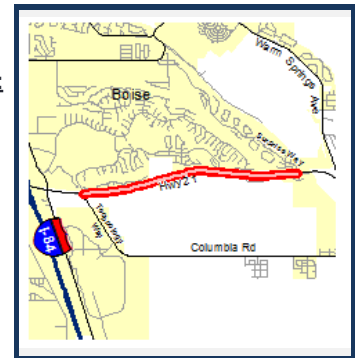
Regionally Significant: Inflated

COMPASS PM:

Federal PM:

Key #: 20428

Congestion Reduction/System Reliability
Transportation Safety



Requesting Agency: ITD

Project Year: 2022

Total Previous Expenditures: \$0

Total Programmed Cost: \$4,230

Total Cost (Prev. + Prog.): \$4,230

Project Description : Widen State Highway 21 from Technology Way (near Micron) to Surprise Way (just west of the Boise River Bridge) in the City of Boise. The project includes two 12-foot travel lanes, a continuous 14-foot center turn lane, and two 6-foot shoulders.

Funding Source		HB132 and HB312						Program		State Hwy - Safety & Capacity (Safety)		Local Match 100.00%	
Cost Year*	Preliminary Engineering	Preliminary Engineering Consulting	Right-of-Way	Utilities	Construction Engineering	Construction	Total	Federal Share	Local Share				
2021	146	4	0	0	0	0	150	0	150				
2022	0	0	0	0	510	3,570	4,080	0	4,080				
Fund Totals:	\$146	\$4	\$0	\$0	\$510	\$3,570	\$4,230	\$0	\$4,230				