

PRELIMINARY
NOT FOR
CONSTRUCTION

• Civil Engineering
• Surveying
• Planning
• Design-Communication
• Light Planning
www.breckonlanddesign.com
Phone: 808-376-9183
6887 North Glenwood Street
Coeur d'Alene, Idaho 83814



Copyright © 2017
All rights reserved. Reproduction or use in any form
or by any means without written permission of
Breckon Land Design, Inc. is unlawful and subject to
criminal prosecution.

AVALON KUNA
692 W. AVALON ST.
KUNA, IDAHO
SITE ZONING MODIFICATION

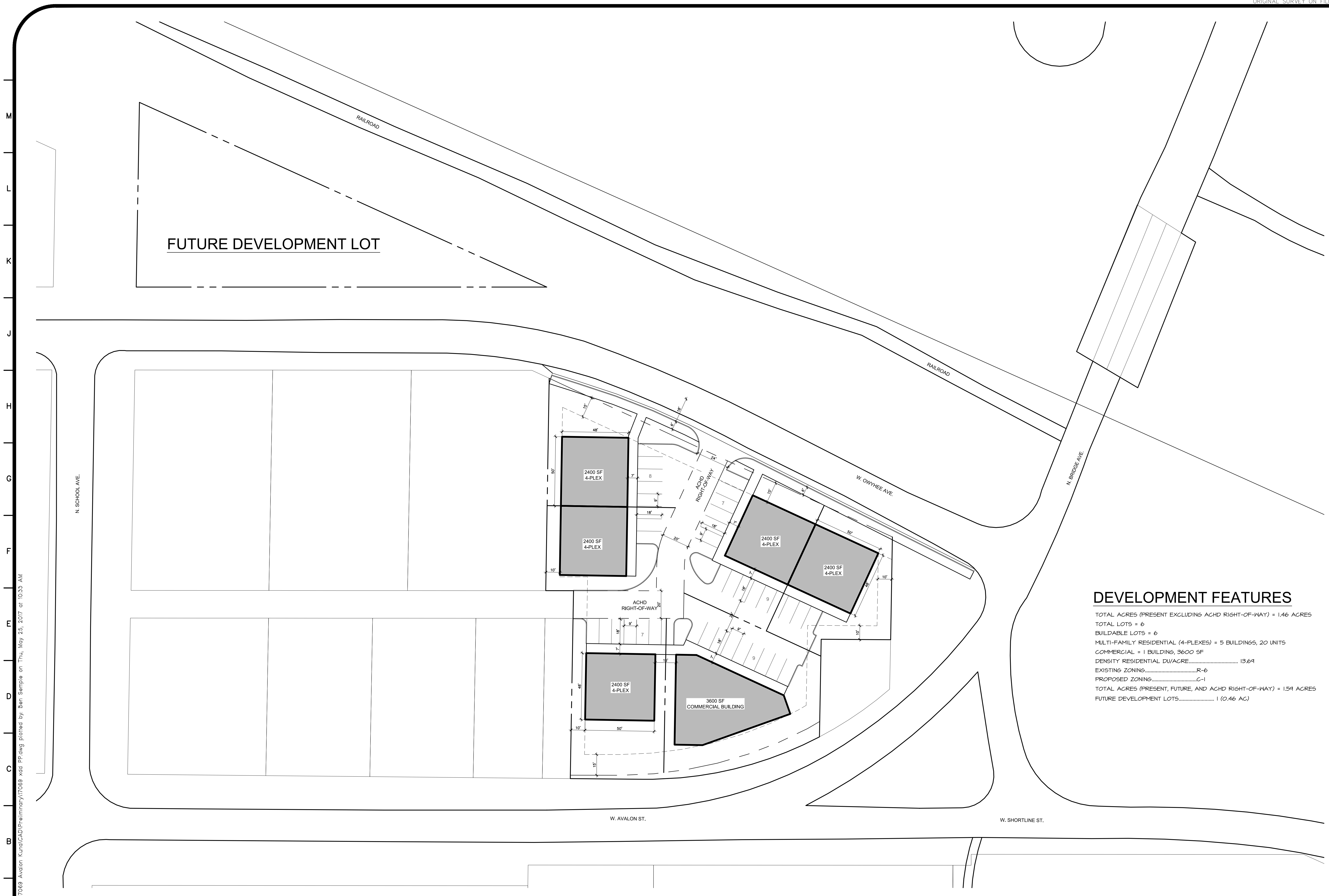


REVISIONS

| No. | Date | Description |
|-----|------|-------------|
| | | |
| | | |

PROJECT NO.:
17069
DRAWN BY:
BSS
CHECKED BY:
BSS
DATE:
05/22/17

SHEET NUMBER
EX1



DEVELOPMENT FEATURES

TOTAL ACRES (PRESENT EXCLUDING ACHD RIGHT-OF-WAY) = 1.46 ACRES
TOTAL LOTS = 6
BUILDABLE LOTS = 6
MULTI-FAMILY RESIDENTIAL (4-PLEXES) = 5 BUILDINGS, 20 UNITS
COMMERCIAL = 1 BUILDING, 3600 SF
DENSITY RESIDENTIAL DU/ACRE..... 13.69
EXISTING ZONING.....R-6
PROPOSED ZONING.....G-1
TOTAL ACRES (PRESENT, FUTURE, AND ACHD RIGHT-OF-WAY) = 1.59 ACRES
FUTURE DEVELOPMENT LOTS..... 1 (0.46 AC)

S:_projects\17069_Avalon_Kuna\CAD\Pre\17069_Avalon_Kuna.dwg plotted by Ben Sample on Thu, May 25, 2017 at 10:33 AM

AVALON KUNA - SITE ZONING

M
L
K
J
H
G
F
E
D
C
B
A

1 2 3 4 5 6 7 8 9 10 11 12 13 14 15 16