



INTERAGENCY CONSULTATION COMMITTEE (ICC)
June 21, 2022 – 8:30 AM
ZOOM CONFERENCE CALL
COMPASS Second Floor Large Conference Room

** AGENDA **

I. CALL TO ORDER (8:30)

II. OPEN DISCUSSION/ANNOUNCEMENTS

III. CONSENT AGENDA

Page 2 *A. Approve May 17, 2022, Meeting Minutes

IV. ACTION ITEM

8:35 *A. Approve Regional Emissions Analysis Assumptions for the Draft FY2023-2029 Regional Transportation Improvement Program (TIP) and Draft Communities in Motion 2050

Mary Ann Waldinger

8:50 *B. Approve the Project List for the Draft FY2023-2029 Regional Transportation Improvement Program (TIP) and Draft Communities in Motion 2050

Mary Ann Waldinger

V. INFORMATION/DISCUSSION ITEMS

9:05 *A. Interstate 84 Auxiliary Lane Study
Page 39 Provide a follow up to the discussion at the May 17, 2022, ICC meeting.

Greg Vitley / MaryAnn Waldinger

9:25 B. Agency Updates
ICC members are welcome to provide updates and share information on items pertaining to air quality.

VI. OTHER

A. Next Meeting: July 19, 2022

VII. ADJOURNMENT (9:30)

*Enclosures will be sent 14 days in advance.

Times are approximate. Agenda is subject to change.

T:\FY22\800 System Maintenance\820 Committee Support\ICCC\06212022\1Agenda_06212022.docx

**INTERAGENCY CONSULTATION COMMITTEE (ICC)
May 17, 2022
COMMUNITY PLANNING ASSOCIATION OF SOUTHWEST IDAHO
(COMPASS)**

****MINUTES****

ATTENDEES:

Tessa Gregor, Ada County Highway District Commuteride, Vice Chair, via telephone
Maureen Gresham, Federal Highway Administration, via telephone
Stephen Hunt, Valley Regional Transit, via telephone
Austin Miller for Edinson Bautista, Chair, Ada County Highway District, via telephone
Greg Vitley, Idaho Transportation Department – District 3, via telephone
Mary Ann Waldinger, COMPASS, via telephone
Steve Hubble, City of Boise, via telephone

OTHERS PRESENT:

David Colander, Idaho Transportation Department – Headquarters, via telephone
Amy Luft, COMPASS, via telephone
Karl Pepple, Environmental Protection Agency – Region X, via telephone
Mitch Skiles, COMPASS, via telephone
Kimi Smith, Department of Environmental Quality, via telephone
Toni Tisdale, COMPASS, via telephone
Randi Walkins, City of Boise, via telephone

CALL TO ORDER

Mary Ann Waldinger requested that Greg Vitley serve as Acting Chair for this meeting, as the Chair (Edinson Bautista) was unable to attend and the Vice Chair (Tessa Gregor) is new to the committee.

Acting Chair Greg Vitley called the meeting to order at 8:32 am.

OPEN DISCUSSION/ANNOUNCEMENTS

General announcements were made.

CONSENT AGENDA

A. Approve June 22, 2021, Meeting Minutes

Two corrections were requested to the June 22, 2021, meeting minutes:

- Adam Clark – change to correctly identify as working for the US Environmental Protection Agency
- David Colander – change to correctly identify as working for the Idaho Transportation Department – Headquarters

Stephen Hunt moved and Mary Ann Waldinger seconded approval of the Consent Agenda as presented with the two changes listed above. Motion passed unanimously.

ACTION ITEM

A. Confirm 2022 Chair and Vice Chair

Mary Ann Waldinger noted that per ICC Bylaws the positions of Chair and Vice Chair rotate annually. Based on the rotation, the 2022 Chair would be Ada County Highway District Representative Edinson Bautista and the 2022 Vice Chair would be Ada County Highway District Commuteride Representative Tessa Gregor.

After discussion, **Stephen Hunt moved and Austin Miller seconded approval of rotation of 2022 Chair to Edinson Bautista and 2022 Vice Chair to Tessa Gregor. Motion passed unanimously.**

As noted above, Greg Vitley served as Acting Chair for this meeting.

INFORMATION/DISCUSSION ITEMS

A. Review Regional Emissions Analysis Assumptions for the Draft FY2023-2029 Regional Transportation Improvement Program (TIP) and Draft *Communities in Motion 2050* (CIM 2050)

Mary Ann Waldinger reviewed the regional emissions analysis assumptions for the draft FY2023-2029 TIP and draft CIM 2050.

B. Review Draft Project List for the Draft FY2023-2029 Regional Transportation Improvement Program (TIP) and Draft *Communities in Motion 2050* (CIM 2050)

Mary Ann Waldinger reviewed the draft project lists for the draft FY2023-2029 TIP and draft CIM 2050.

C. AGENCY UPDATES, OPEN DISCUSSION, AND INTRODUCTIONS

Greg Vitley shared information and requested feedback on a project-level conformity analysis for an upcoming project eastbound on I-84 between the Meridian Road and Eagle Road interchanges that is programmed for study and design this fiscal year. Construction is unfunded. Karl Pepple requested a written description of the project to compare to the regulations for project level analysis. The committee will discuss item again in its June 21, 2022, meeting.

Attendees introduced themselves and new members were welcomed.

ADJOURNMENT

Acting Chair Greg Vitley adjourned the meeting at 9:15 a.m.

Next Meeting: June 21, 2022

T:\FY22\800 System Maintenance\820 Committee Support\ICC\06212022\2Minutes_05172022.docx

INTERAGENCY CONSULTATION COMMITTEE AGENDA ITEM IV-A

Date: June 21, 2022

Topic: Approve Regional Emissions Analysis Modeling Assumptions for the Draft FY2023-2029 Regional Transportation Improvement Program (TIP) and Draft *Communities in Motion 2050* (CIM 2050)

Request/Recommendation:

COMPASS staff seeks approval of the regional emissions analysis modeling assumptions for use in the air quality conformity demonstration for the draft FY2023-2029 TIP and draft CIM 2050.

Background/Summary:

The Interagency Consultation Committee is required to review and approve the assumptions and emissions estimation methodologies used in regional emissions analyses. The assumptions provided in Attachment 1 reflect updates for MOVES3, released January 2021, and are based on the completion of the 2020 National Emissions Inventory project. These analyses are conducted for transportation conformity purposes per state and federal regulations.

Any TIP or long-range transportation plan that includes projects in northern Ada County must demonstrate conformity with the motor vehicle emissions budgets for particulate matter 10 microns or less in diameter (PM₁₀), nitrogen oxides, and volatile organic compounds established in the *Northern Ada County PM10 State Implementation Plan, Maintenance Plan: Ten-Year Update* (SIP).

Budget tests will be performed for:

- 2023: Last motor vehicle emission budget year of the SIP
- 2030: Intermediate analysis year, as there can be no more than 10 years between analysis years
- 2040: Intermediate analysis year, as there can be no more than 10 years between analysis years
- 2050: Horizon year for the regional long-range transportation plan (draft *Communities in Motion 2050*)

A regional emissions analysis is not federally required for carbon monoxide (CO). However, the *Northern Ada County Air Quality Maintenance Area Second 10-Year Carbon Monoxide Limited Maintenance Plan* requires that COMPASS conduct a build/no build emissions analysis for local planning purposes. The **year 2023** will be used to conduct the CO build/no-build analysis.

More Information

- 1) Attachment 1: Regional Emission Analysis Modeling Assumptions
- 2) For detailed information contact: MaryAnn Waldinger, Principal Planner
mwaldinger@compassidaho.org

MW: T:\FY22\800 System Maintenance\820 Committee Support\ICC\06212022\3Memo REA.docx

Regional Emission Analysis Modeling Assumptions

<p><u>Model Designated for On-Road Emissions Modeling</u></p> <p>United States Environmental Protection Agency's (EPA) Motor Vehicle Emissions Simulator 3 (MOVES3, released January 2021)</p>
<p><u>Source type population and fleet age distribution:</u></p> <p>DEQ decoded individual Idaho Division of Motor Vehicles (DMV) registration records of vehicles registered in the Treasure Valley using the Data One, Inc. and CVINA vehicle identification number (VIN) decoding system. The decoded VINs provide information regarding the vehicle make, model, type, age, and fuel types. This information was then used to develop source-related MOVES input.</p>
<p><u>Inspection Maintenance (IM) Program – June 1, 2010 - future</u></p> <p>Ada County:</p> <ol style="list-style-type: none"> 1) Two speed test (idle and 2500 RPM) for pre 1996 vehicles only. 2) Exhaust onboard diagnostics (OBD) check for 1996 and newer vehicles. 3) Evaporative system OBD check for 1996 and newer vehicles. 4) Compliance factor – calculated annually from the previous year's IM program statistics. 5) Four-year grace period for new vehicles 6) Biennial testing – effective January 1, 2010. <p>Canyon County:</p> <ol style="list-style-type: none"> 1) Two speed test (idle and 2500 RPM) for pre 1996 vehicles only. 2) Evaporative gas cap check for 1996 and newer vehicles. 3) Exhaust OBD check for 1996 and newer vehicles. 4) Evaporative system OBD check for 1996 and newer vehicles. 5) Compliance factor – Calculated annually from the previous year's IM program statistics. 6) Five-year grace period for new vehicles 7) Biennial testing – effective January 1, 2010.
<p><u>Meteorology</u></p> <p>The meteorology input compiles the average hourly temperature and relative humidity data for each county. Base- and future-year inventories were modeled using average hourly temperature and relative humidity data by county for each month from a representative weather station for each county. Ada County is represented by the National Weather Service station at the Boise Air Terminal and Canyon County is represented by the data set from the Caldwell Industrial Airport.</p>
<p><u>Fuel-Related Inputs</u></p> <p>Alternative Vehicle Fuels and Technology (AVFT): Ada and Canyon Counties were modeled using a custom AVFT input file derived from VIN-decoded registration data, the Idaho Department of Education school bus database, and telephone surveys of local garbage collection and public transportation providers.</p> <p>Fuel Supply, and Fuel Formulation: National default fuel supply inputs were used for all source types.</p> <p>Fuel Usage Fractions: Assumes that all E-85 capable vehicles are using conventional (E10) gasoline</p>
<p><u>Average Speed Distribution</u></p> <p>The average speed distribution allocates the different source types (vehicles) for each roadway type to 16 speed bins ranging from 0 to >75 miles per hour. Average speed distributions were developed from the regional travel demand model average daily estimates or forecasts for each roadway segment and hourly traffic count statistics developed from detailed automatic traffic recorder (ATR) traffic count data provided by Idaho Transportation Department (ITD).</p> <p>The hourly ATR-based traffic count profiles for each roadway type were used to estimate hourly volume on each segment and the modified Bureau of Public Roadways volume/capacity curve was used to develop the average speed distribution database for each hour.</p> $\text{Hourly Vehicle Speed} = \text{Free Flow Speed} * \left(1 + A * \left(\frac{\text{Volume}}{\text{Capacity}} \right)^B \right)$ <p>Where A and B are local coefficients used in the regional travel demand model as provided by COMPASS.</p> <p>Base- and future-year average speed distributions were developed for all four MOVES road types using travel demand model base and future-year outputs developed by COMPASS for the Treasure Valley and detailed ATR data provided by ITD.</p>

T:\FY22\800 System Maintenance\820 Committee Support\ICC\06212022\3xRegional Emission Analysis Modeling Assumptions.docx



INTERAGENCY CONSULTATION COMMITTEE AGENDA ITEM IV-B

DATE: June 21, 2022

Topic: Project List for the Draft FY2023-2029 Regional Transportation Improvement Program (TIP) and Draft *Communities in Motion 2050* (CIM 2050)

Request/Recommendation:

COMPASS staff seeks approval of the project list for use in the air quality conformity demonstration for the draft FY2023-2029 TIP and draft CIM 2050.

Background/Summary:

Any TIP or long-range transportation plan that includes projects in northern Ada County must demonstrate conformity with the motor vehicle emissions budgets established in the *Northern Ada County PM₁₀ State Implementation Plan, Maintenance Plan: Ten-Year Update*. The Interagency Consultation Committee is required to review and approve the list of transportation projects included in the air quality conformity demonstration.

COMPASS staff prepared the list of projects (attached) to make up the “build” travel demand model networks for use in the conformity demonstration for northern Ada County in the draft FY2023-2029 TIP and draft CIM 2050. The model networks are based on the most up-to-date information available, and include programmed and planned funded projects listed in the following reports:

- Ada County Highway District’s (ACHD’s) 2020 Capital Improvement Plan
- ACHD’s FY2022-2026 Integrated Five-Year Work Program
- Valley Regional Transit’s implemented service changes and draft Transportation Development Plan
- Draft FY2023-FY2029 Idaho Transportation Investment Program
- Draft FY2023-FY2029 Regional Transportation Improvement Program
- Long-term funded project list approved by the COMPASS Board of Directors on April 18, 2022, for the draft CIM 2050 long-range transportation plan

Note: A regional emissions analysis is not federally required for carbon monoxide (CO). However, *Northern Ada County Air Quality Maintenance Area Second 10-Year Carbon Monoxide Limited Maintenance Plan* requires COMPASS to conduct a build/no build emissions analysis for local planning purposes. The same “build” networks are used to estimate the motor vehicle emission estimates for the regional emissions analysis and CO “build” analysis. The CO Limited Maintenance Plan will sunset December 2022; therefore, this is the last time a build/no build emissions analysis for CO will be required.

More Information

- 1) Attachment 1: Project List
- 2) Attachment 2: Map of projects
- 3) For detailed information contact: MaryAnn Waldinger, Principal Planner
mwaldinger@compassidaho.org.

MW: T:\FY22\800 System Maintenance\820 Committee Support\ICC\06212022\4Memo Project List.docx

Attachment 1: Project List
For the Draft FY2023-2029 Regional Transportation Improvement Program (TIP) and
Draft Communities in Motion 2050
Regional Emissions Analysis Model Networks as of June 3, 2022

All projects listed are included in the travel demand model networks regardless of their regionally significant status, functional classification, and/or funding source for construction. All information below is subject to change as more information becomes available about projects anticipated for future funding.

Current Network: Public Transportation

The following table lists the Valley Regional Transit (VRT) route changes implemented in 2021, or planned for 2022, and that can be reflected in the regional model network. Additional details about the changes are available on [VRT's website](#).

No.	Route Name	Description	Source	Key # (ITIP, IFYWP, CIP)	Reasons for Inclusion in Regional Conformity			Implementation Year
					Regionally Significant	Functional Class	Federally Funded*	
1.	Route 30: Pine	New fixed route service in Meridian mainly along Pine Ave. from Ten Mile Rd. and Franklin Rd. to River Valley St. and Records Ave. (a.k.a. The Village)	VRT	n.a.	No	n.a.	Yes	Fall 2022
2.	Route 7A: Fairview-Ustick and Route 7B: Fairview-Towne Square Mall	Reroute of eastbound 7A and 7B to the City Center on-ramp on Fairview Ave. and closure of two eastbound stops. This change is to improve on time performance and safety.	VRT	n.a.	No	n.a.	Yes	October 2021
3.	Route 7B: Fairview-Towne Square Mall	Increase peak frequency by adding three morning peak direction trips and four afternoon peak direction trips.	VRT	n.a.	No	n.a.	Yes	October 2021
4.	Route 17: Warm Springs	Reduction in peak period service from 30 minutes to 60 minutes.	VRT	n.a.	No	n.a.	Yes	October 2021
5.	Route 29: Overland	Minor reroute near Boise State University using Jaunita St., Potter Dr., and Joyce St. to improve travel times and safety.	VRT	n.a.	No	n.a.	Yes	October 2021
6.	Route 43: Caldwell Express	Reduction to one morning and one afternoon/evening trip per the results of a survey.	VRT	n.a.	No	n.a.	Yes	October 2021

*VRT uses federal funds for preventative maintenance and routes are eligible to receive federal funds for operations.

Current Network: Roadways

The following table lists the roadway projects recently completed or under construction. Projects under construction are expected to be open to the motoring public by December 31, 2022.

No.	Street Name	Location	Description	Source	Key # (ITIP, IFYWP, CIP)	Reasons for Inclusion in Regional Conformity			Construction Year
						Regionally Significant	Functional Class	Federally Funded	
7.	Lake Hazel Rd.	Locust Grove Rd. to Eagle Rd.	Widen roadway from 2 lanes to 5 lanes	IFYWP, 2020 CIP	RD209-17, RD2020- 0690	Yes	principal arterial	No	Under Construction
8.	Maple Grove Rd.	Victory Rd. to Overland Rd.	Widen roadway from 2 lanes to 5 lanes	IFYWP, 2020 CIP	RD207-22, RD2020- 0930	No	minor arterial	No	Under Construction
9.	State Hwy 44	State Hwy 16 to Linder Rd.	Widen roadway from 2 lanes to 4 lanes	Draft TIP and ITIP, draft CIM 2050	20266	Yes	principal arterial	Yes*	Under Construction
10.	State Hwy 55 (Eagle Rd.)	Southbound River Valley Rd. to Franklin Rd.	Widen southbound from 2 lanes to 3 lanes	ITIP (FY21)	13349	Yes	principal arterial	No	Under Construction
11.	Ten Mile Rd.	Victory Rd. to Overland Rd.	Widen roadway from 2 lanes to 5 lanes	IFYWP, 2020 CIP	RC0299, RD2020- 1310	Yes	principal arterial	No	Under Construction
12.	US Hwy 20/26	Linder Rd. to Meridian Rd.	Widen roadway from 2 lanes to 4 lanes	ITIP (FY21)	20594	Yes	principal arterial	Yes*	Under Construction

Yes*: Previous phases or stages funded with federal dollars.

2023 Analysis

The 2023 analysis uses 2023 demographics, the current networks, and the following lists of projects. The 2023 transportation network is built for use in the motor vehicle emissions budget tests for particulate matter 10 microns or less in diameter (PM₁₀), volatile organic compounds (VOCs), and oxides of nitrogen (NO_x), and the carbon monoxide (CO) build/no build emissions analysis for local planning purposes.

2023 Network: Public Transportation

No.	Route Name	Description	Source	Key # (TDP)	Reasons for Inclusion in Regional Conformity			Implementation Year
					Regionally Significant	Functional Class	Federally Funded*	
13.	Route 52: Caldwell Blvd.	Increase "all-day" frequency to from 60- to 30-minute.	VRT	n.a.	No	n.a.	Yes	2023

Note: "all-day" frequency means same frequency provided all day (no difference in frequency provided during the peak and off-peak period)

*VRT uses federal funds for preventative maintenance and routes are eligible to receive federal funds for operations.

2023 Network: Roadways

No.	Street Name	Location	Description	Source	Key # (ITIP, IFYWP, CIP)	Subject to Regional Emissions Analysis			Construction Year
						Regionally Significant	Functional Class	Federally Funded	
14.	Locust Grove Rd.	Victory Rd. to Overland Rd.	Widen roadway from 2 lanes to 5 lanes	IFYWP, 2020 CIP	RD202-44, RD2020-0870	No	minor arterial	No	2023
15.	US Hwy 20/26	Meridian Rd. to Locust Grove Rd.	Widen roadway from 2 lanes to 4 lanes	ITIP (FY21)	20594	Yes	principal arterial	Yes*	2022-2023

2025 Analysis

The 2025 transportation network uses 2025 demographics and includes current network projects, 2023 network projects, and the following lists of projects. **These lists are for information and the network is built for planning purposes only.**

2025 Network: Public Transportation

The public transportation network changes are per VRT's draft Transportation Development Plan. Some current routes remain but others are revised. In addition, some routes will be removed and replaced by new routes that provide increased frequency and/or longer service hours. Routes starting with FR indicate they are new or restructure of an existing route. Restructure includes rerouting and/or changes in frequency. This is not intended to be an exhaustive list of all the anticipated changes but only those that can be and are reflected in the regional model.

No.	Route Name	Description	Source	Key # (TDP)	Reasons for Inclusion in Regional Conformity			Implementation Year
					Regionally Significant	Functional Class	Federally Funded*	
16.	FR-005-1: Fairview Ave. / Cole Rd.	Route restructure providing service between Towne Square Mall and Glenwood St.	VRT	n.a.	No	n.a.	Yes	2025
17.	FR-005-1: Fairview Ave. / Ustick Rd.	Route restructure providing service between The Village (Meridian) and Towne Square Mall	VRT	n.a.	No	n.a.	Yes	2025

*VRT uses federal funds for preventative maintenance and routes are eligible to receive federal funds for operations.

2025 Network: Roadways

No.	Street Name	Location	Description	Source	Key # (ITIP, IFYWP, CIP)	Subject to Regional Emissions Analysis			Construction Year
						Regionally Significant	Functional Class	Federally Funded	
18.	Eagle Rd.	Lake Hazel Rd. to Amity Rd.	Widen roadway from 2 lanes to 5 lanes	IFYWP, 2020 CIP, draft TIP, draft CIM 2050	RD216-04, RD2020-0340	Yes	principal arterial	No	2024
19.	Fairview Ave.	Locust Grove Rd. to State Hwy 55 (Eagle Rd.)	Widen roadway from 5 lanes to 7 lanes	IFYWP, 2020 CIP, draft TIP, draft CIM 2050	RC0133, RD2020-0420	Yes	principal arterial	No	2025
20.	State St.	Hertford Way to Ellens Ferry Dr.	Widen roadway from 5 to 7 lanes (part of the State St. and Peirce Park Ln. intersection project)	IFYWP, 2020 CIP, draft TIP, draft CIM 2050	IN210-03, 101650	Yes	principal arterial	No	2025

2025 Analysis

No.	Street Name	Location	Description	Source	Key # (ITIP, IFYWP, CIP)	Subject to Regional Emissions Analysis			Construction Year
						Regionally Significant	Functional Class	Federally Funded	
21.	State Hwy 16 (phase 2)	I-84 to US 20/26 Phase 2 South exhibit Phase 2 North exhibit	Construct new north-south divided highway: 2 lanes per direction, an interchange at I-84, and at-grade intersections at Franklin Rd, Ustick Rd, and US 20/26.	Draft TIP, draft CIM 2050	23410, 23408, 23409	Yes (2 miles of this of this 4.5-mile corridor is in Ada County)	Other freeway / expressway	Yes*	2022-2024
22.									
23.	US Hwy 20/26	Star Rd. (Phyllis Canal bridge) to SH 16	Widen roadway from 2 lanes to 4 lanes	Draft TIP, draft CIM 2050	20367 20227	Yes	principal arterial	Yes*	2023-2024
24.	Ustick Rd.	Black Rd. to Ten Mile Rd.	Widen roadway from 2 lanes to 5 lanes	IFYWP, 2020 CIP, draft TIP and draft CIM 2050	200919, 204189, RD2020-1360	Yes	principal arterial	No	2024
25.	Ustick Rd.	Ten Mile Rd. to Linder Rd.	Widen roadway from 2 lanes to 5 lanes	IFYWP, 2020 CIP, draft TIP, draft CIM 2050	RD207-24, RD2020-1370	Yes	principal arterial	No	2024

Yes*: Previous phases funded with federal dollars.

2030 Analysis

The 2030 transportation network uses 2030 demographics and includes the current, 2023, 2025, and the following lists of projects. The 2030 transportation network is built for use in the motor vehicle emissions budget tests for PM₁₀, VOC, and NO_x.

The public transportation network changes are per VRT's draft Transportation Development Plan. Some current routes remain but others are revised. In addition, some routes will be removed and replaced by new routes that provide increased frequency and/or longer service hours. Routes starting with FR indicate they are new or restructure of an existing route. Restructure includes rerouting and/or changes in frequency. This is not intended to be an exhaustive list of all the anticipated changes but only those that can be and are reflected in the regional model.

2030 Network: Public Transportation

No.	Route Name	Description	Source	Key # (TDP)	Reasons for Inclusion in Regional Conformity			Implementation Year
					Regionally Significant	Functional Class	Federally Funded*	
26.	Route 42: Happy Day to Towne Square Mall	Increase "all-day" frequency from 120-minute to 100-minute.	VRT	n.a.	No	n.a.	Yes	2030
27.	FR-007-0: Fairview Ave. Corridor	New route providing service between Ten Mile Rd. (Meridian) and Towne Square Mall via The Village (Meridian).	VRT	n.a.	No	n.a.	Yes	2030
28.	FR-008-0 9: State St	Route extension providing service to the City of Eagle. Increase "all-day" frequency to 15-minute.	VRT	n.a.	No	n.a.	Yes	2030
29.	FR-011-0 Route 3: Vista Ave.	Increase "all-day" frequency to 15-minute.	VRT	n.a.	No	n.a.	Yes	2030
30.	FR-013-1 Route 10: Hill Rd.	Increase peak hour frequency from 60- to 30-minute.	VRT	n.a.	No	n.a.	Yes	2030
31.	FR-010-0 Route 7B: Fairview Ave	Increase "peak" frequency to 15-minute.	VRT	n.a.	No	n.a.	Yes	2030
32.	FR-019-0-S: City of Kuna	New express route providing peak hour service between the City of Kuna and The Village (Meridian).	VRT	n.a.	No	n.a.	Yes	2030
33.	FR-020-0-S: Micron Inter-County Express	New express route providing peak hour service between the City of Nampa and Micron.	VRT	n.a.	No	n.a.	Yes	2030
34.	FR-009-1-S Route 5: Emerald St.	Increase "all-day" frequency to 30-minute.	VRT	n.a.	No	n.a.	Yes	2030

Note: "all-day" frequency means same frequency provided all day (no difference in frequency provided during the peak and off-peak period)

*VRT uses federal funds for preventative maintenance and routes are eligible to receive federal funds for operations.

2030 Analysis

2030 Network: Roadways

No.	Street Name	Location	Description	Source	Key # (ITIP, IFYWP, CIP)	Subject to Regional Emissions Analysis			Construction Year
						Regionally Significant	Functional Class	Federally Funded	
35.	Amity Rd.	Locust Grove Rd. to Eagle Rd.	Widen roadway from 2 lanes to 5 lanes	IFYWP, 2020 CIP	RD219-03, 200628, RD2020-0030	No	minor arterial	No	Future, 2031-2035
36.	Amity Rd.	Eagle Rd. to Cloverdale Rd.	Widen roadway from 2 lanes to 3 lanes	IFYWP, 2020 CIP	202369, RD2020-0040	No	minor arterial	No	Future, 2036-2040
37.	Amity Rd.	Cloverdale Rd. to Five Mile Rd.	Widen roadway from 2 lanes to 3 lanes	IFYWP, 2020 CIP	200939, RD2020-0050	No	minor arterial	No	2026
38.	Amity Rd.	Five Mile Rd. to Maple Grove Rd.	Widen roadway from 2 lanes to 3 lanes	IFYWP, 2020 CIP	MP400165, 200929, RD2020-0060	No	minor arterial	No	Future, 2036-2040
39.	Cloverdale Rd.	Victory Rd. to Overland Rd.	Widen roadway from 2 lanes to 5 lanes	IFYWP, 2020 CIP	RD207-11, RD2020-0280	No	minor arterial	No	2026
40.	Cloverdale Rd.	Amity Rd. to Victory Rd.	Widen roadway from 2 lanes to 5 lanes	IFYWP, 2020 CIP	RD207-10, RD2020-0270	No	minor arterial	No	Future, 2026-2030
41.	Cloverdale Rd.	Lake Hazel Rd. to Amity Rd.	Widen roadway from 2 lanes to 5 lanes	Draft IFYWP, 2020 CIP	M-RD207-09, RD2020-0260	No	minor arterial	No	Future, 2026-2030
42.	Executive Dr.	Cloverdale Rd. to Five Mile Rd.	Widen roadway from 3 lanes to 5 lanes. Includes the one-way couplet between President Dr. and Meadowland Dr. ("the peanut")	2020 CIP	RD2020-0400	No	minor arterial	No	2026-2030
43.	Five Mile Rd.	Lake Hazel Rd. to Amity Rd.	Widen roadway from 2 lanes to 5 lanes	2020 CIP	RD2020-0470	No	minor arterial	No	2026-2030
44.	Five Mile Rd.	Amity Rd. to Victory Rd.	Widen roadway from 2 lanes to 5 lanes	2020 CIP	RD2020-0480	No	minor arterial	No	2026-2030
45.	Five Mile Rd. and Overpass	Overland Rd. to Franklin Rd. Includes widening of the overpass.	Widen roadway from 2 lanes to 5 lanes	IFYWP, 2020 CIP, draft TIP, draft CIM 2050	RD203-04, 201969, RD2020-0490, ORN23591 23095	Yes	minor arterial	Yes*	Future, 2026-2030
46.	Floating Feather Rd.	Palmer Ln. to Linder Rd.	Widen roadway from 2 lanes to 3 lanes	IFYWP, 2020 CIP	RD219-22, 200647, RD2020-0550	No	minor arterial	No	Future, 2036-2040
47.	Floating Feather Rd.	Linder Rd. to Park St.	Widen roadway from 2 lanes to 3 lanes	IFYWP, 2020 CIP	RD219-23, 200648, RD2020-0560	No	minor arterial	No	Future, 2031-2035

2030 Analysis

No.	Street Name	Location	Description	Source	Key # (ITIP, IFYWP, CIP)	Subject to Regional Emissions Analysis			Construction Year
						Regionally Significant	Functional Class	Federally Funded	
48.	Floating Feather Rd.	Park Ln. to Ballantyne Rd.	Widen roadway from 2 lanes to 3 lanes	2020 CIP	RD219-24, RD2020-0570	No	minor arterial	No	Future, 2031-2035
49.	Franklin Rd.	McDermott Rd. to Black Cat Rd.	Widen roadway from 2 lanes to 5 lanes	IFYWP, 2020 CIP	102497, RD2020-0580	Yes	principal arterial	No	Future, 2026-2030
50.	Orchard St. Realigned	Gowen Rd. to I-84 Interchange	Realign and widen from 2 lanes to 5 lanes	IFYWP, 2020 CIP, draft TIP, draft CIM 2050	RD207-01, RD2020-1100	Yes	principal arterial	No	2026-2027
51.	Lake Hazel Rd.	Eagle Rd. to Cloverdale Rd.	Widen roadway from 2 lanes to 5 lanes	IFYWP, 2020 CIP, draft TIP, draft CIM 2050	RD209-18, RD2020-0700	Yes	principal arterial	No	2026-2027
52.	Lake Hazel Rd.	Cloverdale Rd. to Five Mile Rd.	Widen roadway from 2 lanes to 5 lanes	IFYWP, 2020 CIP, draft TIP, draft CIM 2050	RD207-29, RD2020-0710	Yes	principal arterial	No	Future, 2026-2030
53.	Lake Hazel Rd.	Five Mile Rd. to Maple Grove Rd.	Widen roadway from 2 lanes to 5 lanes	IFYWP, 2020 CIP, draft TIP, draft CIM 2050	RD207-30, RD2020-0720	Yes	principal arterial	No	Future, 2026-2030
54.	Lake Hazel Rd.	Maple Grove Rd. to Cole Rd.	Widen roadway from 2 lanes to 5 lanes	IFYWP, 2020 CIP, draft TIP, draft CIM 2050	RD216-05, RD2020-0730	Yes	principal arterial	No	Future, 2026-2030
55.	Linder Rd. and Overpass	Overland Rd. to Franklin Rd. Including a new overpass.	Widen roadway from 2 lanes to 5 lanes	IFYWP, 2020 CIP, draft TIP, draft CIM 2050	RC0207, RD2020-0800	Yes	principal arterial	No	Future, 2036-2040
56.	Linder Rd.	US Hwy 20/26 (Chinden Blvd.) to State Hwy 44 (State St.)	Widen roadway from 2 lanes to 5 lanes	IFYWP, 2020 CIP, draft TIP, draft CIM 2050	RD207-19, 102120, RD2020-0840	Yes	principal arterial	No	Future, 2026-2030

2030 Analysis

No.	Street Name	Location	Description	Source	Key # (ITIP, IFYWP, CIP)	Subject to Regional Emissions Analysis			Construction Year
						Regionally Significant	Functional Class	Federally Funded	
57.	Linder Rd.	State Hwy 44 (State St.) to Floating Feather Rd.	Widen roadway from 2 lanes to 5 lanes	IFYWP, 2020 CIP, draft TIP, draft CIM 2050	RD209-28, RD2020-0850	Yes	principal arterial	No	2026-2027
58.	Locust Grove Rd.	Amity Rd. to Victory Rd.	Widen roadway from 2 lanes to 3 lanes	IFYWP, 2020 CIP	RD207-34, RD2020-0860	No	minor arterial	No	Future, 2036-2040
59.	Locust Grove Rd.	Fairview Ave. to Ustick Rd.	Widen roadway from 3 lanes to 5 lanes	IFYWP, 2020 CIP	RD210-02, RD2020-0880	No	minor arterial	No	Future, 2026-2030
60.	Locust Grove Rd.	Ustick Rd. to McMillan Rd.	Widen roadway from 2 lanes to 3 lanes	IFYWP, 2020 CIP	RD202-20, 200405, RD2020-0890	No	minor arterial	No	Future, 2036-2040
61.	Locust Grove Rd.	McMillan Rd. to US Hwy 20/26 (Chinden Blvd.)	Widen roadway from 2 lanes to 3 lanes	IFYWP, 2020 CIP	RD202-19, 200603, RD2020-0900	No	minor arterial	No	Future, 2036-2040
62.	Maple Grove Rd.	Amity Rd. to Victory Rd.	Widen roadway from 2 lanes to 5 lanes	IFYWP, 2020 CIP	RD207-21, RD2020-0920	No	minor arterial	No	Future, 2026-2030
63.	Maple Grove Rd	Lake Hazel Rd. to Amity Rd	Widen roadway from 2 lanes to 5 lanes	IFYWP, 2020 CIP	RD207-20, RD2020-0910	No	minor arterial	No	Future, 2026-2030
64.	Meridian Rd.	Ustick Rd. to McMillan Rd.	Widen roadway from 2 lanes to 3 lanes	IFYWP, 2020 CIP	200407, RD2020-1050	No	minor arterial	No	Future, 2026-2030
65.	Meridian Rd.	McMillan Rd. to US Hwy 20/26 (Chinden Blvd.)	Widen roadway from 2 lanes to 3 lanes	IFYWP, 2020 CIP	200607, RD2020-1060	No	minor arterial	No	Future, 2026-2030
66.	State Hwy 16 (phase 3)	I-84 to US 20/26 I-84 / Franklin Rd. exhibit Ustick Rd. to US Hwy 20/26 exhibit SH 44 exhibit	Complete the interchange at I-84 and convert the at-grade intersections at Franklin Rd, Ustick Rd, US 20/26 and SH 44 to interchanges.	Draft TIP, draft CIM 2050	20788	Yes (2 miles of this of this 4.5-mile corridor is in Ada County)	Other freeway / expressway	Yes*	2024-2027
67.	State Hwy 44	Star Rd. to State Hwy 16	Widen roadway from 2 lanes to 4 lanes	Draft TIP, draft CIM 2050	20574	Yes	principal arterial	Yes*	2026
68.	Ten Mile Rd.	Hubbard Rd. to Columbia Rd.	Widen roadway from 2 lanes to 3 lanes	IFYWP, 2020 CIP	RD 209-38, RD2020-1270	No	minor arterial	No	Future, 2031-2035
69.	US Hwy 20/26 <i>Interim</i>	Can Ada Rd. to Star Rd.	Widen roadway from 2 lanes to 4 lanes	Draft TIP, draft CIM 2050	23337	Yes	principal arterial	Yes*	2024-2027

2030 Analysis

No.	Street Name	Location	Description	Source	Key # (ITIP, IFYWP, CIP)	Subject to Regional Emissions Analysis			Construction Year
						Regionally Significant	Functional Class	Federally Funded	
70.	Ustick Rd.	Star Rd. to McDermott Rd.	Widen roadway from 2 lanes to 5 lanes	IFYWP, 2020 CIP, draft TIP, draft CIM 2050	203719, RD2020-1340	Yes	principal arterial	No	Future, 2026-2030
71.	Ustick Rd.	McDermott Rd. to Black Cat Rd.	Widen roadway from 2 lanes to 5 lanes	IFYWP, 2020 CIP, draft TIP, draft CIM 2050	102502, RD2020-1350	Yes	principal arterial	No	Future, 2026-2030
72.	Victory Rd.	Linder Rd. to Meridian Rd.	Widen roadway from 2 lanes to 3 lanes	IFYWP, 2020 CIP	RD219-46, RD2020-1410	No	minor arterial	No	Future, 2031-2035
73.	Victory Rd.	Meridian Rd. to Locust Grove Rd.	Widen roadway from 2 lanes to 3 lanes	IFYWP, 2020 CIP	RD2020-1420	No	minor arterial	No	Future, 2026-2030
74.	Victory Rd.	Locust Grove Rd. to Eagle Rd.	Widen roadway from 2 lanes to 3 lanes	IFYWP, 2020 CIP	200450, RD2020-1430	No	minor arterial	No	Future, 2026-2030
75.	Victory Rd.	Eagle Rd. to Cloverdale Rd.	Widen roadway from 2 lanes to 5 lanes	IFYWP, 2020 CIP	RD215-11, RD2020-1440	No	minor arterial	No	Future, 2026-2030
76.	Victory Rd.	Cloverdale Rd. to Five Mile Rd.	Widen roadway from 2 lanes to 5 lanes	IFYWP, 2020 CIP	RD207-26, RD2020-1450	No	minor arterial	No	Future, 2026-2030

Yes*: Previous phases or stages funded with federal dollars

Projects that show Construction Year = "Future" have design, engineering and / or right-of-way programmed in ACHD's current IFYWP.

2040 Analysis

The 2040 transportation network uses the 2040 demographics and includes current, 2023, 2025, 2030, and the following lists of projects. The 2040 transportation network is built for use in the motor vehicle emissions budget tests for PM₁₀, VOC, and NO_x.

The public transportation network changes are per VRT's draft Transportation Development Plan. Some current routes remain but others are revised. In addition, some routes will be removed and replaced by new routes that provide increased frequency and/or longer service hours. Routes starting with FR indicate they are new or restructure of an existing route. Restructure includes rerouting and/or changes in frequency. This is not intended to be an exhaustive list of all the anticipated changes but only those that can be and are reflected in the regional model.

2040 Network: Public Transportation

No.	Route Name	Description	Source	Key # (TDP)	Reasons for Inclusion in Regional Conformity			Implementation Year
					Regionally Significant	Functional Class	Federally Funded*	
77.	FR-009-2 Route 29: Overland Rd.	Increase "all-day" frequency to 30-minute.	VRT	n.a.	No	n.a.	Yes	2040
78.	FR-018-0 Route 4: Roosevelt St.	Route restructure providing service between Towne Square Mall and the Boise Airport.	VRT	n.a.	No	n.a.	Yes	2040
79.	FR-018-0 Route 6: Orchard St.	Route restructure providing service between Gowen Field and downtown Boise.	VRT	n.a.	No	n.a.	Yes	2040

Note: "all-day" frequency means same frequency provided all day (no difference in frequency provided during the peak and off-peak period)

2040 Network: Roadways

No.	Street Name	Location	Description	Source	Key # (ITIP, IFYWP, CIP)	Subject to Regional Emissions Analysis			Construction Year
						Regionally Significant	Functional Class	Federally Funded	
80.	36th Street Extension	Cartwright Rd. to Bogus Basin Rd.	Construct new 2-lane roadway	2020 CIP	RD2020-0010	No	minor arterial	No	2036-2040
81.	Amity Rd.	State Hwy 69 (Meridian Rd.) to Locust Grove Rd.	Widen roadway from 2 lanes to 5 lanes	IFYWP, 2020 CIP	RD2020-0020	No	minor arterial	No	2036-2040
82.	New Hope Rd.	Can Ada Rd. to Munger Rd.	Widen from 2 lanes to 3 lanes	2020 CIP	RD2020-1070	No	minor arterial	No	2036-2040
83.	Beacon Light Rd. Extension	Munger Rd. to Pollard Rd.	Construct new 3 lane road	2020 CIP	RD2020-0070	No	minor arterial	No	2036-2040
84.	Beacon Light Rd.	Pollard Rd. to State Hwy 16	Widen roadway from 2 lanes to 3 lanes	2020 CIP	RD2020-0080	No	minor arterial	No	2036-2040
85.	Beacon Light Rd.	State Hwy 16 to Palmer Ln.	Widen roadway from 2 lanes to 3 lanes	2020 CIP	RD2020-0090	No	minor arterial	No	2036-2040

2040 Analysis

No.	Street Name	Location	Description	Source	Key # (ITIP, IFYWP, CIP)	Subject to Regional Emissions Analysis			Construction Year
						Regionally Significant	Functional Class	Federally Funded	
86.	Black Cat Rd.	Amity Rd. to Victory Rd.	Widen roadway from 2 lanes to 5 lanes	2020 CIP	RD2020-0150	No	minor arterial	No	2036-2040
87.	Black Cat Rd.	Victory Rd. to Overland Rd.	Widen roadway from 2 lanes to 5 lanes	2020 CIP	RD2020-0160	No	minor arterial	No	2036-2040
88.	Black Cat Rd.	Overland Rd. to Franklin Rd.	Widen roadway from 2 lanes to 5 lanes (does not include widening of overpass)	2020 CIP	RD2020-0170	No	minor arterial	No	2036-2040
89.	Black Cat Rd.	Franklin Rd. to Cherry Ln.	Widen roadway from 2 lanes to 5 lanes	2020 CIP	RD2020-0180	No	minor arterial	No	2031-2035
90.	Black Cat Rd.	Cherry Ln. to Ustick Rd.	Widen roadway from 2 lanes to 5 lanes	2020 CIP	RD2020-0190	No	minor arterial	No	2031-2035
91.	Black Cat Rd.	Ustick Rd. to McMillan Rd.	Widen roadway from 2 lanes to 5 lanes	2020 CIP	RD2020-0200	No	minor arterial	No	2031-2035
92.	Black Cat Rd.	McMillan Rd. to US Hwy 20/26 (Chinden Blvd.)	Widen roadway from 2 lanes to 5 lanes	2020 CIP	RD2020-0210	No	minor arterial	No	2036-2040
93.	Cloverdale Rd.	Kuna Rd. to Deer Flat Rd.	Widen roadway from 2 lanes to 5 lanes	2020 CIP	RD2020-0220	No	minor arterial	No	2036-2040
94.	Cloverdale Rd.	Deer Flat Rd. to Hubbard Rd.	Widen roadway from 2 lanes to 5 lanes	2020 CIP	RD2020-0230	No	minor arterial	No	2036-2040
95.	Cloverdale Rd.	Hubbard Rd. to Columbia Rd.	Widen roadway from 2 lanes to 5 lanes	2020 CIP	RD2020-0240	No	minor arterial	No	2036-2040
96.	Cloverdale Rd.	Columbia Rd. to Lake Hazel Rd.	Widen roadway from 2 lanes to 5 lanes	2020 CIP	RD2020-0250	No	minor arterial	No	2036-2040
97.	Deer Flat Rd.	Linder Rd. to State Hwy 69 (Meridian Rd.)	Widen roadway from 3 lanes to 5 lanes	2020 CIP	RD2020-0300	No	minor arterial	No	2031-2035
98.	Deer Flat Rd.	State Hwy 69 (Meridian Rd.) to Locust Grove Rd.	Widen roadway from 2 lanes to 5 lanes	2020 CIP	RD2020-0310	No	minor arterial	No	2036-2040
99.	Deer Flat Rd.	Locust Grove Rd. to Eagle Rd.	Widen roadway from 2 lanes to 3 lanes	2020 CIP	RD2020-0320	No	minor arterial	No	2036-2040
100.	Deer Flat Rd.	Eagle Rd. to Cloverdale Rd.	Construct new 3-lane road	2020 CIP	RD2020-0330	No	minor arterial	No	2036-2040
101.	Eisenman Rd.	Lake Hazel Rd. to Gowen Rd.	Widen roadway from 2 lanes to 3 lanes	2020 CIP	RD2020-0360	No	minor arterial	No	2036-2040
102.	Fairview Ave.	Meridian Rd. to Locust Grove Rd.	Widen roadway from 5 lanes to 7 lanes	2020 CIP, CIM 2040 2.0	RD2020-0410	Yes	principal arterial	No	2036-2040

2040 Analysis

No.	Street Name	Location	Description	Source	Key # (ITIP, IFYWP, CIP)	Subject to Regional Emissions Analysis			Construction Year
						Regionally Significant	Functional Class	Federally Funded	
103.	Fairview Ave.	State Hwy 55 (Eagle Rd.) to Cloverdale Rd.	Widen roadway from 5 lanes to 7 lanes	2020 CIP, draft CIM 2050	RD2020-0430	Yes	principal arterial	No	2036-2040
104.	Fairview Ave.	Cloverdale Rd. to Five Mile Rd.	Widen roadway from 5 lanes to 7 lanes	2020 CIP, draft CIM 2050	RD2020-0440	Yes	principal arterial	No	2036-2040
105.	Five Mile Rd.	Ustick Rd. to McMillan Rd.	Widen roadway from 3 lanes to 5 lanes	CIP 2020	RD2020-500	No	minor arterial	No	2036-2040
106.	Floating Feather Rd. Ext.	Can Ada Rd. to Star Rd.	Construct new 3-lane road	2020 CIP	RD2020-0510	No	minor arterial	No	2036-2040
107.	Floating Feather Rd.	Star Rd. to Plummer Ln.	Widen roadway from 2 lanes to 3 lanes	2020 CIP	RD2020-0520	No	minor arterial	No	2036-2040
108.	Floating Feather Rd. Realignment	Plummer Ln. to State Hwy 16 (Emmett Hwy)	Widen roadway from 2 lanes to 3 lanes	2020 CIP	RD2020-0530	No	minor arterial	No	2036-2040
109.	Floating Feather Rd. Realignment	State Hwy 16 (Emmett Hwy) to Palmer Ln.	Widen roadway from 2 lanes to 3 lanes	2020 CIP	RD2020-0540	No	minor arterial	No	2036-2040
110.	Gowen Rd.	Orchard St. to Pleasant Valley Rd.	Widen roadway from 2 lanes to 5 lanes	2020 CIP, draft CIM 2050	RD2020-0590	Yes	principal arterial	No	2031-2035
111.	Hill Rd./ Hill Road Pkwy	Horseshoe Bend Rd. to Duncan Ln.	Widen roadway from 3 lanes to 5 lanes	2020 CIP	RD2020-0600	No	minor arterial	No	2031-2035
112.	Hill Rd./ Hill Road Pkwy	Duncan Ln. to Seaman Gulch Rd.	Widen roadway from 3 lanes to 5 lanes	2020 CIP	RD2020-0610	No	minor arterial	No	2031-2035
113.	Hill Rd./ Hill Road Pkwy	Seaman Gulch Rd. to Gary Ln.	Widen roadway from 3 lanes to 5 lanes	2020 CIP	RD2020-0620	No	minor arterial	No	2031-2035
114.	Hubbard Rd.	Meridian Rd. to Locust Grove Rd.	Widen roadway from 2 lanes to 3 lanes	2020 CIP	RD2020-0630	No	minor arterial	No	2036-2040
115.	Lake Hazel Rd.	State Hwy 69 (Meridian Rd.) to Locust Grove Rd.	Widen roadway from 2 lanes to 5 lanes	2020 CIP, draft CIM 2050	RD2020-0680	Yes	principal arterial	No	2036-2040
116.	Lake Hazel Rd.	Cole Rd. to Orchard Ext. W (built at 2 lanes in 2018)	Widen roadway from 2 lanes to 5 lanes	2020 CIP, draft CIM 2050	RD2020-0740	Yes	principal arterial	No	2036-2040
117.	Lake Hazel Rd.	Orchard Ext. W to Pleasant Valley Rd.	Construct new 5-lane road	2020 CIP, draft CIM 2050	RD2020-0750	Yes	principal arterial	No	2036-2040
118.	Lake Hazel Rd.	Railroad Crossing to Eisenman Road	Construct new 5-lane road	2020 CIP, draft CIM 2050	RD2020-0765	Yes	principal arterial	No	2036-2040

2040 Analysis

No.	Street Name	Location	Description	Source	Key # (ITIP, IFYWP, CIP)	Subject to Regional Emissions Analysis			Construction Year
						Regionally Significant	Functional Class	Federally Funded	
119.	Locust Grove Rd.	Lake Hazel Rd. to Amity Rd.	Widen roadway from 2 lanes to 3 lanes	2020 CIP	RD2020-0855	No	minor arterial	No	2036-2040
120.	McMillan Rd.	Star Rd. to McDermott Rd.	Widen roadway from 2 lanes to 3 lanes	2020 CIP	RD2020-0950	No	minor arterial	No	2036-2040
121.	McMillan Rd.	McDermott Rd. to Black Cat Rd.	Widen roadway from 2 lanes to 3 lanes	2020 CIP	RD2020-0960	No	minor arterial	No	2036-2040
122.	McMillan Rd.	Black Cat Rd. to Ten Mile Rd.	Widen roadway from 2 lanes to 3 lanes	2020 CIP	RD2020-0970	No	minor arterial	No	2031-2035
123.	McMillan Rd.	Ten Mile Rd. to Linder Rd.	Widen roadway from 2 lanes to 3 lanes	2020 CIP	RD2020-0980	No	minor arterial	No	2031-2035
124.	McMillan Rd.	Linder Rd. to State Hwy 69 (Meridian Rd.)	Widen roadway from 2 lanes to 3 lanes	2020 CIP	RD2020-0990	No	minor arterial	No	2031-2035
125.	McMillan Rd.	State Hwy 69 (Meridian Rd.) to Locust Grove Rd.	Widen roadway from 2 lanes to 3 lanes	2020 CIP	RD2020-1000	No	minor arterial	No	2031-2035
126.	McMillan Rd.	Five Mile Rd. to Maple Grove Rd.	Widen roadway from 2 lanes to 3 lanes	2020 CIP	RD2020-1020	No	minor arterial	No	2031-2035
127.	Meridian Rd. Ext.	King Rd. to Kuna Rd.	Construct new 3-lane road with railroad overpass	2020 CIP	RD2020-1030	Yes	principal arterial	No	2036-2040
128.	Orchard St. Ext. W.	Lake Hazel Ext. to Orchard Ext. (built at 2 lanes in 2018)	Widen roadway from 2 lanes to 5 lanes	2020 CIP	RD2020-1080	Yes	principal arterial	No	2036-2040
129.	Orchard St. Ext.	Orchard Ext. W to Gowen Rd. (built at 2 lanes in 2018)	Widen roadway from 2 lanes to 5 lanes	2020 CIP	RD2020-1090	Yes	principal arterial	No	2036-2040
130.	Overland Rd. Ext. (Airport Rd.)	McDermott Rd. to Black Cat Rd.	Construct new 2-lane road	2020 CIP	RD2020-1110	No	minor arterial	No	2036-2040
131.	Overland Rd.	Black Cat Rd. to Ten Mile Rd.	Widen roadway from 2 lanes to 3 lanes	2020 CIP	RD2020-1120	No	minor arterial	No	2036-2040
132.	Pleasant Valley Ext.	Orchard Ext to Pleasant Valley Rd.	Construct new 5-lane road	2020 CIP	RD2020-1180	No	minor arterial	No	2036-2040
133.	Star Rd.	Ustick Rd. to McMillan Rd.	Widen roadway from 2 lanes to 5 lanes	2020 CIP	RD2020-1190	No	minor arterial	No	2031-2035
134.	Star Rd.	McMillan Rd. to US Hwy 20/26 (Chinden Blvd.)	Widen roadway from 2 lanes to 5 lanes	2020 CIP	RD2020-1200	No	minor arterial	No	2031-2035

2040 Analysis

No.	Street Name	Location	Description	Source	Key # (ITIP, IFYWP, CIP)	Subject to Regional Emissions Analysis			Construction Year
						Regionally Significant	Functional Class	Federally Funded	
135.	Star Rd.	US Hwy 20/26 (Chinden Blvd.) to State Hwy 44 (State St.)	Widen roadway from 2 lanes to 5 lanes	2020 CIP	RD2020- 1210	No	minor arterial	No	2031-2035
136.	State St.	Glenwood to Hertford Way	Widen roadway from 5 lanes to 7 lanes consistent with the State St TTOP**	IFYWP, 2020 CIP, draft CIM 2050	RD2020- 1220	Yes	principal arterial	No	Future, 2031- 2035
137.	State St.	Ellens Ferry Dr. to Collister Dr.	Widen roadway from 5 lanes to 7 lanes consistent with the State St TTOP	IFYWP, 2020 CIP, draft CIM 2050	RD2020- 1230	Yes	principal arterial	No	Future, 2031- 2035
138.	State St.	Collister Dr. to 36th St.	Widen roadway from 5 lanes to 7 lanes consistent with the State St TTOP	IFYWP, 2020 CIP, draft CIM 2050	RD2020- 1240	Yes	principal arterial	No	Future, 2031- 2035
139.	State St.	36th St. to 27th St.	Widen roadway from 5 lanes to 7 lanes consistent with the State St TTOP	IFYWP, 2020 CIP, draft CIM 2050	RD2020- 1250	Yes	principal arterial	No	Future, 2031- 2035
140.	Ten Mile Rd.	Deer Flat Rd. to Hubbard Rd.	Widen roadway from 2 lanes to 5 lanes	IFYWP, 2020 CIP	RD209-37, RD2020- 1260	No	minor arterial	No	Future, 2031- 2035
141.	Ten Mile Rd.	Columbia Rd. to Lake Hazel Rd.	Widen roadway from 2 lanes to 3 lanes	2020 CIP	RD2020- 1280	No	minor arterial	No	2036-2040
142.	Ten Mile Rd.	Lake Hazel Rd. to Amity Rd.	Widen roadway from 2 lanes to 3 lanes	2020 CIP	RD2020- 1290	Yes	principal arterial	No	2036-2040
143.	Ten Mile Rd.	Amity Rd. to Victory Rd.	Widen roadway from 2 lanes to 5 lanes	2020 CIP	RD2020- 1300	Yes	principal arterial	No	2031-2035
144.	US Hwy 20/26 Ultimate	SH 16 to Linder Rd.	Widen from 4 lanes to 6 lanes	Draft CIM 2050	TBD	Yes	principal arterial	Yes*	2036-2040
145.	US Hwy 20/26 Ultimate	Linder Rd. to Eagle Rd.	Widen from 4 lanes to 6 lanes	Draft CIM 2050	TBD	Yes	principal arterial	Yes*	2031-2035

Yes*: Previous phases or stages funded with federal dollars.

TTOP**: [Transit and Traffic Operational Plan](#)

2050 Analysis

The 2050 transportation network uses the 2050 demographics and includes current, 2023, 2025, 2030, and the following lists of projects. The 2040 transportation network is built for use in the includes the construction year networks for current, 2023, 2025, 2030, 2040, and the following list of projects. The 2050 transportation network is built for use in the motor vehicle emissions budget tests for PM₁₀, VOC, and NO_x.

2050 Network: Roadways

The projects shown below are shown in ACHD's 2020 Capital Improvement Plan (CIP), adopted in August 2020, for corridor preservation only. The CIP covers the years 2021 to 2040 but the draft regional long-range transportation, CIM 2050, has a horizon year of 2050. Working with ACHD and the Regional Transportation Advisory Committee, the "corridor preservation only" projects are anticipated to be constructed by 2050 and therefore included in the draft CIM 2050 long-term funded list approved by the COMPASS Board of Directors in April 2022. While many of them are not subject to regional conformity, they are listed for transparency and completeness. Those marked "Yes" are subject to regional conformity, thus included on the approved CIM 2050 long-term funded list.

No.	Street Name	Location	Description	Source	Key # (ITIP, IFYWP, CIP)	Subject to Regional Emissions Analysis			Construction Year
						Regionally Significant	Functional Class	Federally Funded	
146.	Beacon Light Rd.	Palmer Ln. to Linder Rd.	Widen roadway from 2 lanes to 3 lanes	CIP 2020	RD2020-100	No	minor arterial	No	2046-2050
147.	Beacon Light Rd.	Linder Rd. to Park Ln.	Widen roadway from 2 lanes to 3 lanes	CIP 2020	RD2020-110	No	minor arterial	No	2046-2050
148.	Beacon Light Rd.	Park Ln. to Ballantyne Rd.	Widen roadway from 2 lanes to 3 lanes	CIP 2020	RD2020-120	No	minor arterial	No	2046-2050
149.	Beacon Light Rd.	Ballantyne Rd. to Eagle Rd.	Widen roadway from 2 lanes to 3 lanes	CIP 2020	RD2020-130	No	minor arterial	No	2046-2050
150.	Beacon Light Rd.	Eagle Rd. to Horseshoe Bend Rd.	Widen roadway from 2 lanes to 3 lanes	CIP 2020	RD2020-140	No	minor arterial	No	2046-2050
151.	Emerald St.	Five Mile Rd. to Maple Grove Rd.	Widen roadway from 3 lanes to 5 lanes	CIP 2020	RD2020-370	No	minor arterial	No	2041-2045
152.	Emerald St.	Maple Grove Rd. to Cole Rd.	Widen roadway from 3 lanes to 5 lanes	CIP 2020	RD2020-380	No	minor arterial	No	2041-2045
153.	Emerald St. and Overpass	Cole Rd. to Curtis Rd.	Widen roadway from to 5 lanes (existing lanes varies through this section)	CIP 2020	RD2020-390	No	minor arterial	No	2041-2045
154.	Fairview Ave.	Five Mile Rd. to Maple Grove Rd.	Widen from 5 to 7 lanes	CIP 2020, draft CIM 2050	RD2020-450	Yes	principal arterial	No	2041-2045
155.	Fairview Ave.	Maple Grove Rd. to Cole Rd.	Widen from 5 to 7 lanes	CIP 2020, draft CIM 2050	RD2020-460	Yes	principal arterial	No	2041-2045

2050 Analysis

No.	Street Name	Location	Description	Source	Key # (ITIP, IFYWP, CIP)	Subject to Regional Emissions Analysis			Construction Year
						Regionally Significant	Functional Class	Federally Funded	
156.	King Rd.	Swan Falls Rd. to Meridian Rd.	Widen from 2 to 3 lanes	CIP 2020	RD2020-640	No	minor arterial	No	2046-2050
157.	King Rd.	Meridian Rd. to Locust Grove Rd.	Widen from 2 to 3 lanes	CIP 2020	RD2020-650	No	minor arterial	No	2046-2050
158.	King Rd.	Locust Grove Rd. to Eagle Rd.	Widen from 2 to 3 lanes	CIP 2020	RD2020-660	No	minor arterial	No	2046-2050
159.	Lake Hazel Rd.	Linder Rd. to Meridian Rd (SH 69).	Widen from 2 to 3 lanes	CIP 2020, draft CIM 2050	RD2020-670	Yes	principal arterial	No	2041-2045
160.	Lake Hazel Rd.	Pleasant Valley Rd. to Railroad Crossing	Construct a new 5-lane roadway	CIP 2020, draft CIM 2050	RD2020-760	Yes	principal arterial	No	2041-2045
161.	Linder Rd.	Lake Hazel Rd. to Amity Rd.	Widen from 2 to 3 lanes	CIP 2020	RD2020-770	No	minor arterial	No	2046-2050
162.	Linder Rd.	Amity Rd. to Victory Rd.	Widen from 2 to 3 lanes	CIP 2020	RD2020-780	No	minor arterial	No	2046-2050
163.	Linder Rd.	Victory Rd. to Overland Rd.	Widen from 2 to 3 lanes	CIP 2020	RD2020-790	No	minor arterial	No	2046-2050
164.	Linder Rd.	Pine Ave. to Cherry Ln.	Widen from 2 to 3 lanes	CIP 2020	RD2020-820	No	minor arterial	No	2046-2050
165.	Linder Rd.	Cherry Ln. to Ustick Rd.	Widen from 2 to 3 lanes	CIP 2020	RD2020-830	No	minor arterial	No	2046-2050
166.	McMillan Rd.	Cloverdale Rd. to Five Mile Rd.	Widen from 3 to 5 lanes	CIP 2020	RD2020-1010	No	minor arterial	No	2041-2045
167.	Overland Rd.	Locust Grove Rd. to Eagle Rd.	Widen from 5 to 7 lanes	CIP 2020, draft CIM 2050	RD2020-1130	Yes	principal arterial	No	2046-2050
168.	Overland Rd.	Eagle Rd. to Cloverdale Rd.	Widen from 2 to 7 lanes	CIP 2020, draft CIM 2050	RD2020-1140	Yes	principal arterial	No	2046-2050
169.	Overland Rd.	Cloverdale Rd. to Five Mile Rd.	Widen from 5 to 7 lanes	CIP 2020, draft CIM 2050	RD2020-1150	Yes	principal arterial	No	2046-2050
170.	Overland Rd.	Five Mile Rd. to Maple Grove Rd.	Widen from 5 to 7 lanes	CIP 2020, draft CIM 2050	RD2020-1160	Yes	principal arterial	No	2046-2050
171.	Overland Rd.	Maple Grove Rd. to Cole Rd.	Widen from 5 to 7 lanes	CIP 2020, draft CIM 2050	RD2020-1170	Yes	principal arterial	No	2046-2050

2050 Analysis

No.	Street Name	Location	Description	Source	Key # (ITIP, IFYWP, CIP)	Subject to Regional Emissions Analysis			Construction Year
						Regionally Significant	Functional Class	Federally Funded	
172.	US Hwy 20/26 Ultimate	Can Ada Rd. to SH 16	Widen from 4 lanes to 6 lanes	Draft CIM 2050	TBD	Yes	principal arterial	Yes*	2041-2045
173.	Ustick Rd.	Cole Rd. to Curtis Rd.	Widen from 3 to 5 lanes	CIP 2020	RD2020-1380	No	minor arterial	No	2046-2050
174.	Victory Rd.	Black Cat Rd. to Ten Mile Rd.	Widen from 2 to 3 lanes	CIP 2020	RD2020-1390	No	minor arterial	No	2046-2050
175.	Victory Rd.	Ten Mile Rd. to Linder Rd.	Widen from 2 to 3 lanes	CIP 2020	RD2020-1400	No	minor arterial	No	2046-2050
176.	Victory Rd.	Five Mile Rd. to Maple Grove Rd.	Widen from 2 to 5 lanes	CIP 2020	RD2020-1460	No	minor arterial	No	2046-2050
177.	Victory Rd.	Maple Grove Rd. to Cole Rd.	Widen from 4 to 5 lanes	CIP 2020	RD2020-1470	No	minor arterial	No	2046-2050

Other Projects:

These projects are programmed or funded, but located in Canyon County, Idaho. Projects located in Canyon County are not subject to regional emissions analyses. These are for planning purposes and provided for information ONLY.

No.	Street Name	Location	Description	Source	Key # (ITIP, IFYWP, CIP)	Subject to Regional Emissions Analysis			Construction Year
						Regionally Significant	Functional Class	Federally Funded	
178.	Amity Rd.	Kings Rd. to McDermott Rd.	Widen from 2 to 4 or 5 lanes	City of Nampa, draft CIM 2050	TBD	NO –project is located in Canyon County (outside the maintenance area)	principal arterial	TBD	2036-2040
179.	Can Ada Rd./Idaho Center Blvd.	Franklin Rd. to Ustick Rd.	Widen from 2 to 5 lanes	City of Nampa	TBD	NO –project is located in Canyon County (outside the maintenance area)	principal arterial	TBD	2036-2040
180.	Franklin Blvd.	Birch Ln. to Ustick Rd.	Widen from 2 to 5 lanes	City of Nampa, draft CIM 2050	TBD	NO –project is located in Canyon County (outside the maintenance area)	principal arterial	TBD	2036-2040
181.	Franklin Blvd.	Ustick Rd. to US Hwy 20/26	Widen from 2 to 5 lanes	City of Nampa, draft CIM 2050	TBD	NO –project is located in Canyon County (outside the maintenance area)	principal arterial	TBD	2041-2045
182.	Franklin Rd.	Star Rd. to the SH 16 southbound ramp	Widen from 2 to 5 lanes	City of Nampa, draft CIM 2050	TBD	NO –project is located in Canyon County (outside the maintenance area)	principal arterial	TBD	2026-2030
183.	Happy Valley Rd.	Airport Rd. to Stamm Ln.	Widen from 2 to 5 lanes	City of Nampa	TBD	NO –project is located in Canyon County (outside the maintenance area)	minor arterial	TBD	By 2030
184.	Happy Valley Rd.	Locust Ln. to Airport Rd.	Widen from 2 to 3 lanes	City of Nampa	TBD	NO –project is located in Canyon County (outside the maintenance area)	minor arterial	TBD	2046-2050

No.	Street Name	Location	Description	Source	Key # (ITIP, IFYWP, CIP)	Subject to Regional Emissions Analysis			Construction Year
						Regionally Significant	Functional Class	Federally Funded	
185.	I-84	Franklin Rd. Interchange in Caldwell to Karcher Rd. Interchange	Widen I-84 from 2 to 3 lanes per direction	Draft TIP, draft CIM 2050	22196	NO –project is located in Canyon County (outside the maintenance area)	Interstate	Yes	Under construction and complete by 2023
186.	I-84	Centennial Way Interchange (Exit 27) to Franklin Rd. (Exit 29)	Widen I-84 from 2 to 3 lanes per direction; add auxiliary lanes per design	Draft CIM 2050	TBD	NO –project is located in Canyon County (outside the maintenance area)	Interstate	Yes	2023-2026
187.	Lake Lowell Ave.	Midway Rd. to Midland Blvd.	Widen from 2 to 3 lanes	City of Nampa	TBD	NO –project is located in Canyon County (outside the maintenance area)	minor arterial	No	2036-2040
188.	Lone Star Ave.	Midway Rd. to 7 th Ave.	Widen from 2 to 3 lanes	City of Nampa	TBD	NO –project is located in Canyon County (outside the maintenance area)	collector	No	2036-2040
189.	Middleton Rd.	Greenhurst Ave. to Caldwell-Nampa Blvd.	Widen from 3 to 5 lanes	Draft CIM 2050, City of Nampa's CIP	TBD	NO –project is located in Canyon County (outside the maintenance area)	minor arterial	TBD	2026-2030
190.	Midland Blvd.	Greenhurst Ave. to Caldwell-Nampa Blvd.	Widen from 3 to 5 lanes	Draft CIM 2050, City of Nampa's CIP	TBD	NO –project is located in Canyon County (outside the maintenance area)	minor arterial	TBD	2026-2030
191.	Northside Blvd.	Karcher Rd. to Ustick Rd.	Widen from 2 to 4 lanes	Draft CIM 2050, City of Nampa's CIP	TBD	NO –project is located in Canyon County (outside the maintenance area)	principal arterial	TBD	2026-2030

No.	Street Name	Location	Description	Source	Key # (ITIP, IFYWP, CIP)	Subject to Regional Emissions Analysis			Construction Year
						Regionally Significant	Functional Class	Federally Funded	
192.	Northside Blvd.	Ustick Rd. to US Hwy 20/26	Widen from 2 to 4 lanes	Draft CIM 2050, City of Nampa's CIP	TBD	NO –project is located in Canyon County (outside the maintenance area)	principal arterial	TBD	2031-2035
193.	State Hwy 55 (Karcher Rd)	Pear Ln. to Farmway Rd.	Widen from 2 to 4 lanes	Draft CIM 2050	23335	NO –project is located in Canyon County (outside the maintenance area)	principal arterial	Yes*	2026-2030
194.	State Hwy 55 (Karcher Rd)	Farmway Rd. to Middleton Rd.	Widen from 2 to 4 lanes	Draft CIM 2050	22715	NO –project is located in Canyon County (outside the maintenance area)	principal arterial	Yes*	2024-2027
195.	State Hwy 55 / Exit 33 Improvements	Westbound Off Ramp through the Caldwell-Nampa Blvd.	Add a southwest lane through the Caldwell-Nampa Blvd	Draft ITIP	23336	NO –project is located in Canyon County (outside the maintenance area)	principal arterial	Yes*	2023-2025
196.	US Hwy 20/26	I-84 to Middleton Rd	Widen from 2 to 6 lanes	TIP, ITIP, CIM 2040 2.0	22165	NO –project is located in Canyon County (outside the maintenance area)	principal arterial	Yes*	2022-2023
197.	US Hwy 20/26 <i>Interim</i>	Middleton Rd to Can Ada Rd.	Widen from 2 to 4 lanes	Draft CIM 2050	23337	NO –project is located in Canyon County (outside the maintenance area)	principal arterial	Yes*	2024-2027
198.	US Hwy 20/26 Ultimate	Middleton Rd to Can Ada Rd.	Widen from 4 to 6 lanes	Draft CIM 2050	TBD	NO –project is located in Canyon County (outside the maintenance area)	principal arterial	Yes*	2041-2045

No.	Street Name	Location	Description	Source	Key # (ITIP, IFYWP, CIP)	Subject to Regional Emissions Analysis			Construction Year
						Regionally Significant	Functional Class	Federally Funded	
199.	Ustick Rd. Overpass	At Interstate 84	Replace the Ustick Road overpass (2-lanes per direction) to accommodate additional lanes on I-84	ITIP	22619	NO –project is located in Canyon County (outside the maintenance area)	principal arterial	Yes*	Under Construction
200.	Ustick Rd.	Cleveland Blvd. to the reconstructed / widened Ustick Rd. Overpass	Widen from 2 to 4 lanes	City of Caldwell	TBD	NO –project is located in Canyon County (outside the maintenance area)	principal arterial	TBD	2023
201.	Ustick Rd.	Ustick Rd. Overpass to Middleton Rd.	Widen from 2 to 4 lanes	City of Caldwell	TBD	NO –project is located in Canyon County (outside the maintenance area)	principal arterial	TBD	By 2030
202.	Ustick Rd.	Middleton Rd. to Midland Blvd	Widen from 2 to 4 lanes	City of Caldwell	TBD	NO –project is located in Canyon County (outside the maintenance area)	principal arterial	TBD	By 2035

Yes*: Previous phases or stages funded with federal dollars.

TBD = information on both federally funded and construction year will be provided in the final list. COMPASS staff is working with agencies to fill in this additional information.

Source of Projects:

Draft TDP = Valley Regional Transit's Draft Transportation Development Plan

FYWP = ACHD's Integrated Five-Year Work Plan FY2022-2026 adopted January 2022

CIP = ACHD's Capital Improvements Plan FY2020-2040 adopted August 2020

ITIP = draft FY2023-FY2029 Idaho Transportation Investment Program

TIP = draft FY2023-FY2029 Regional Transportation Improvement Program list

Draft CIM 2050 short-term and long-term funded project lists approved by the COMPASS Board of Directors on April 18, 2022

FYWP #/ITD Key #:

FYWP# = ACHD GIS numbers are alpha numeric identification numbers (ex. RD169)

ITD Key# = ITD Key numbers are from the Transportation Improvement Program and the State Transportation Improvement Program and are strictly numeric (ex. 6299)

Regionally Significant Roadway Project Definition:

Regional emissions analyses, for the purposes of demonstrating transportation conformity of a TIP or long-range plan, must include all regionally significant and/or federally funded projects in the nonattainment or maintenance area. On January 30, 2002, the ICC developed the following definition of a "Regionally Significant" project:

"A transportation project in Ada County, Idaho is designated 'Regionally Significant' if:

- (a) the project is for the improvement of either:
 - (i) a principal arterial or higher functional classification; or
 - (ii) a minor arterial which will have a twenty (20) year projected traffic volume of at least 45,000 vehicles a day after completion of the project; and
- (b) the project will add at least one new continuous vehicular lane which either:
 - (i) extends from one intersecting principal or minor arterial to another intersecting principal or minor arterial; or
 - (ii) in the case of an interstate, extends from the on ramp of one interstate interchange to a point beyond the off ramp of the next adjacent interstate interchange."

Regionally Significant Transit Project Definition

On August 31, 2005, the ICC adopted the following definition of a "Regionally Significant" transit project:

A transit project in Ada County, Idaho is designated "Regionally Significant" if the transit project:

- (a) has the potential to change the vehicle demand of an existing roadway classified as a principal arterial or higher by 400 vehicles per hour, or 4,000 vehicles per weekday; and
- (b) is a transit service or facility that provides services to (or connects) at a minimum:
 - (i) two counties and;
 - (ii) three incorporated cities

Despite these definitions, the ICC maintains discretionary authority in interpreting and applying them to the area's transportation programs, plans, and projects. For the purposes of this conformity determination, all applicable roadway projects, despite their significance, were included in the travel demand model networks.

Exempt projects:

Pursuant to 40CFR93.126 (Exempt Projects), certain projects listed in a long-range transportation plan or TIP may proceed even in the absence of a conformity finding/demonstration. Exempt projects include highway safety or mass transit projects, landscaping projects, roadway rehabilitation and repair, transportation enhancement projects, and transportation planning activities that do not lead directly to construction.

Pursuant to 40CFR93.127 (Exempt Projects from the Regional Emissions Analyses), certain projects listed in a long-range transportation plan or TIP may proceed even in the absence of a conformity finding/demonstration. Exempt projects include intersection channelization or signalization at individual intersections, interchange reconfiguration, changes in vertical and horizontal alignment, truck size and weight stations, bus terminals and transfer points.

However, the exempt projects listed in 40CFR93.126 or 40CFR93.127 are not considered exempt if the ICC concludes that they may have an adverse impact on air quality or has potential regional impacts.

Status:

Based on project information provided by ITD or ACHD.

The regional model covers two counties – Ada and Canyon. The projects in Ada and Canyon County are included in the appropriate model network year. Air quality conformity is required for only northern Ada County; therefore, only the projects within Ada County are listed above.

T:\FY22\800 System Maintenance\820 Committee Support\ICC\06212022\4xProjectListTIPFY2329CIM2050.docx

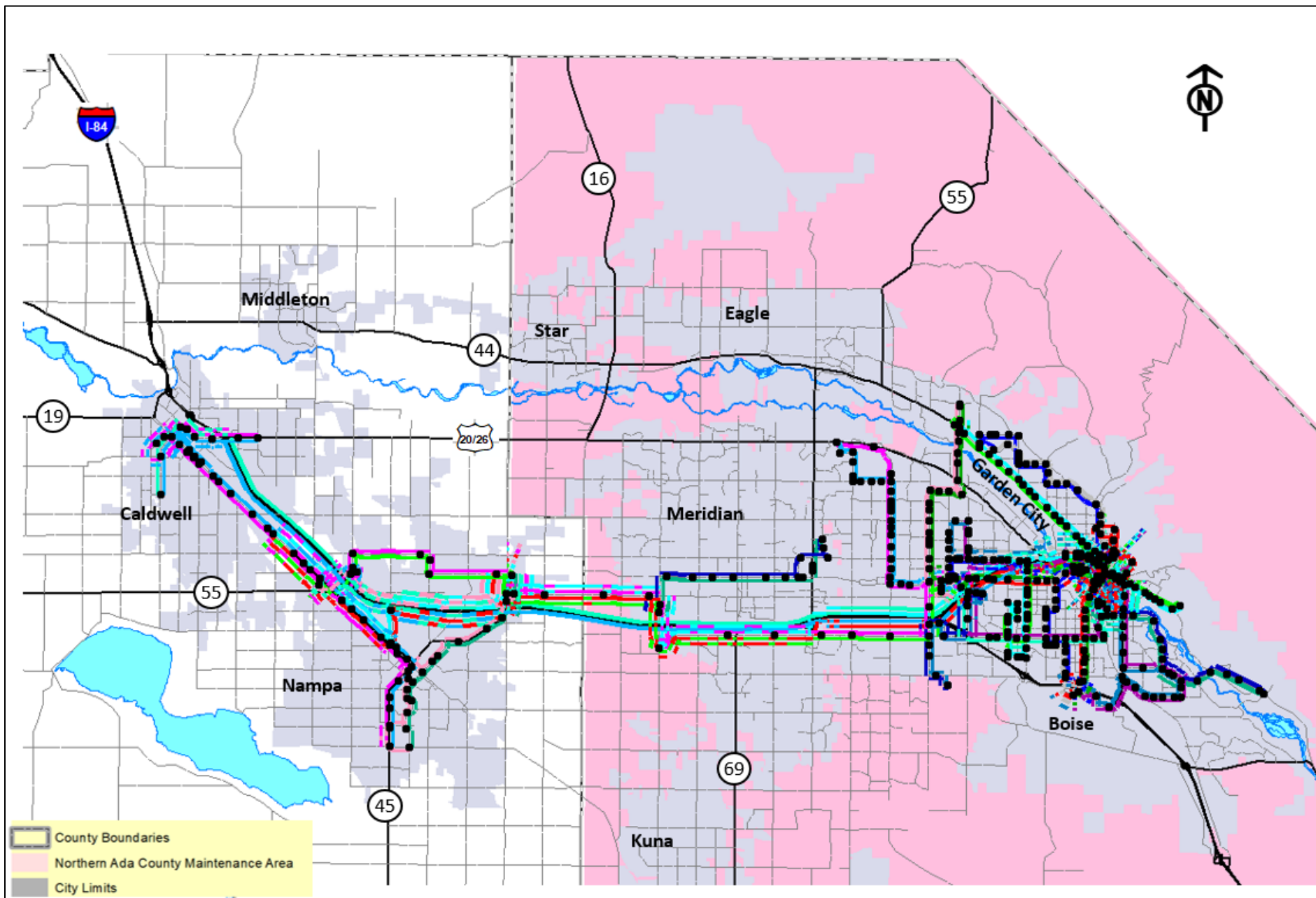


Figure 1: Current Public Transportation System

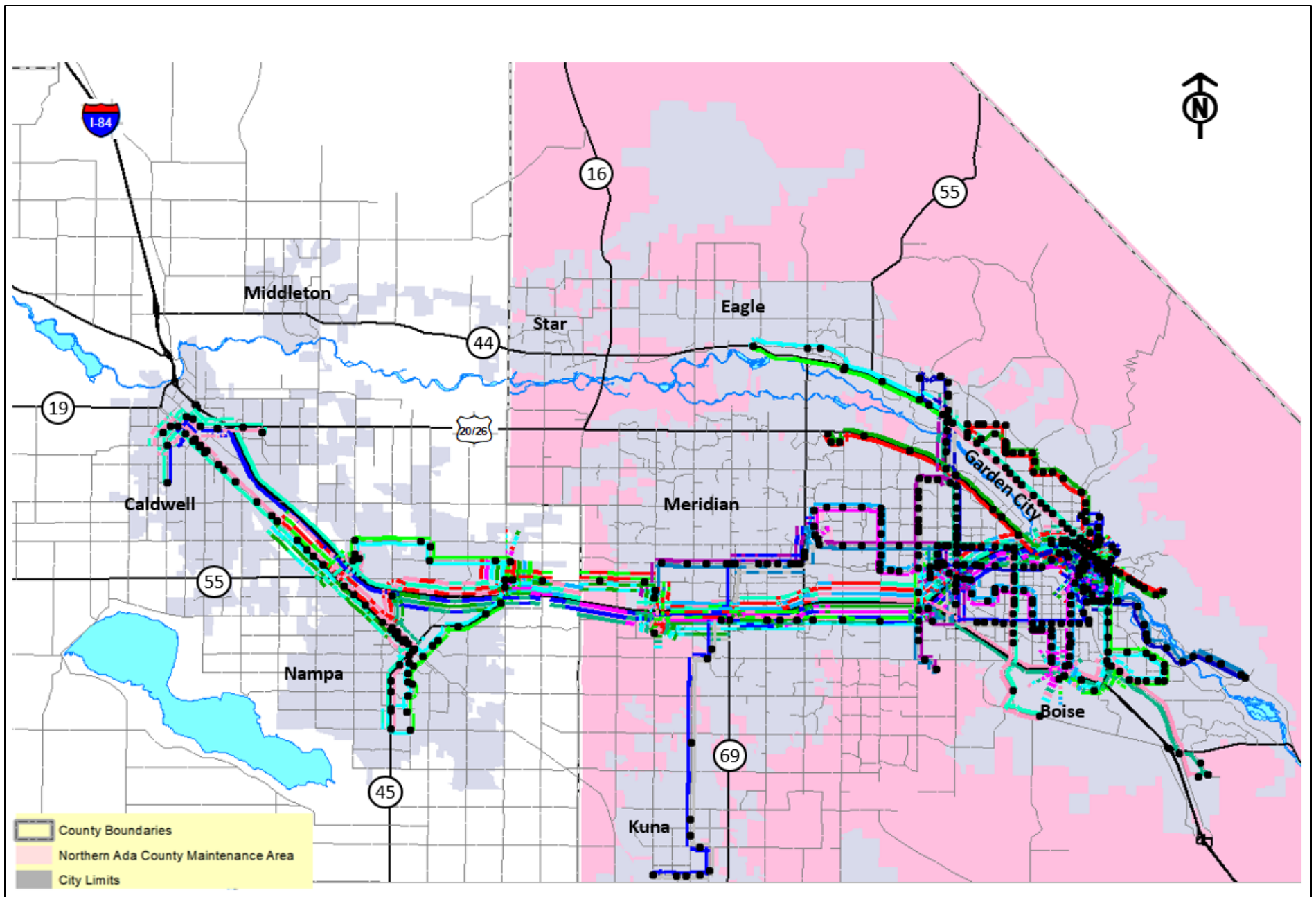


Figure 2: Public Transportation System Implemented by 2050

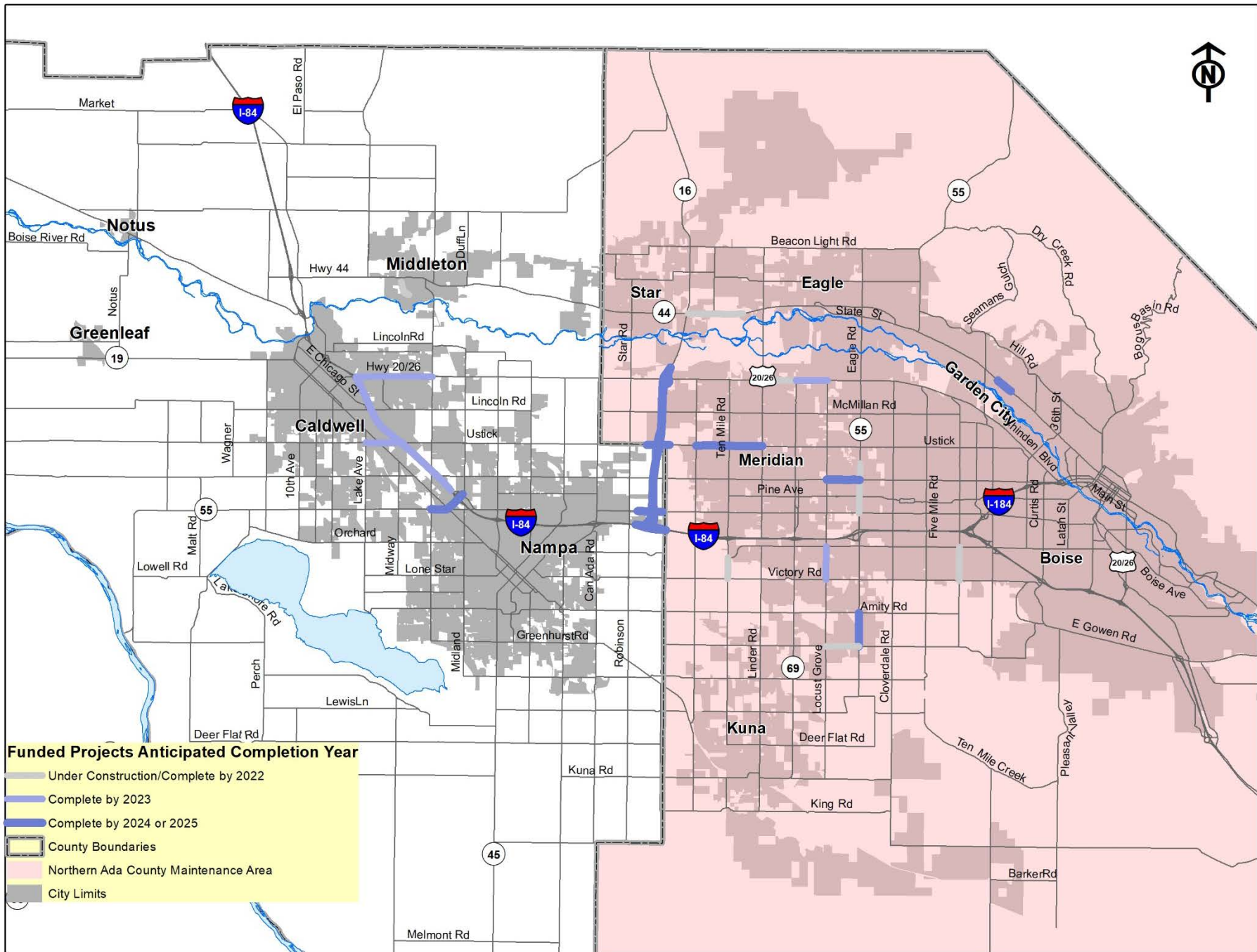


Figure 3: Roadway Projects Currently Under Construction or Complete by 2025

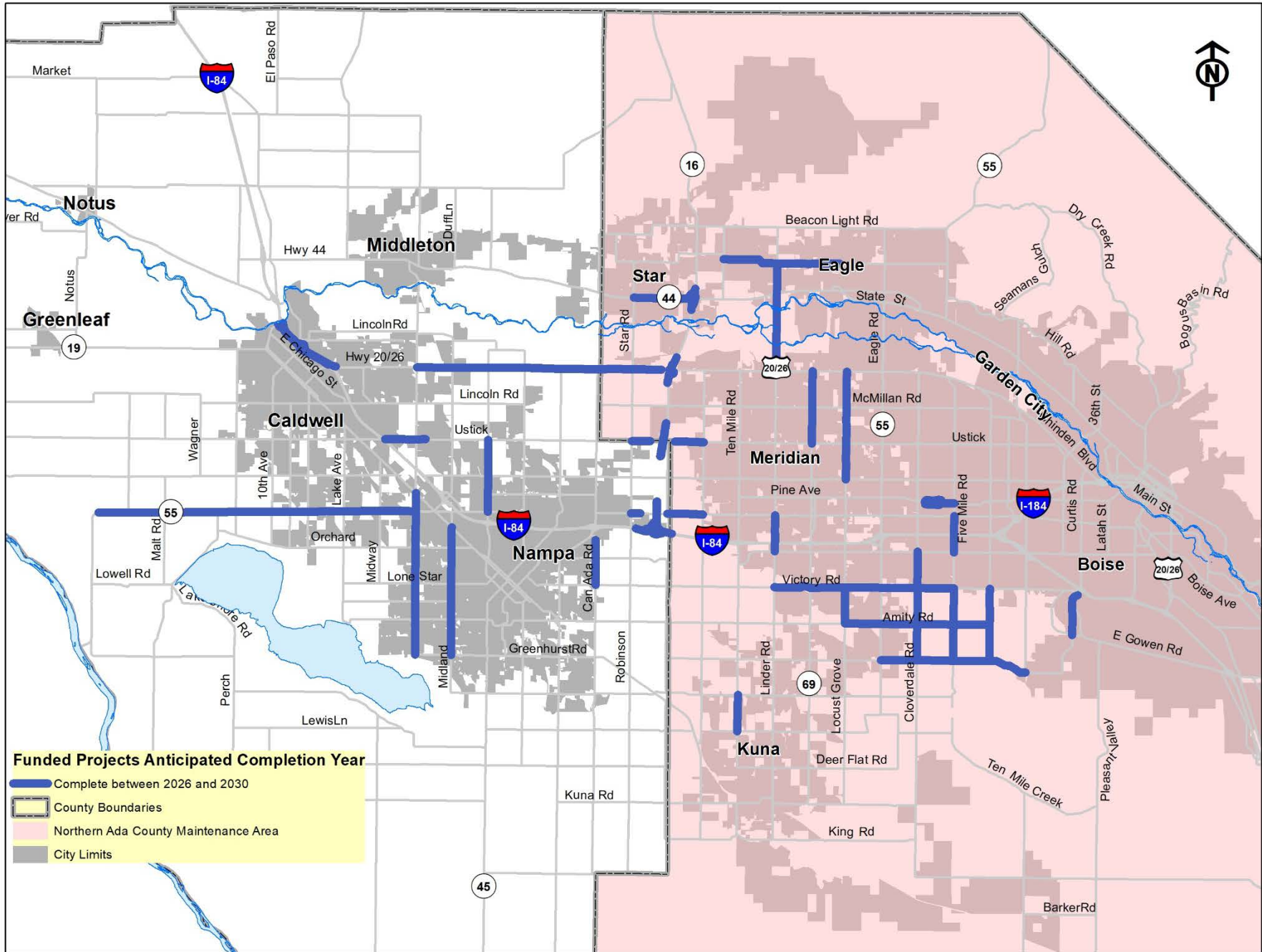


Figure 4: Roadway Projects Complete between 2026 and 2030

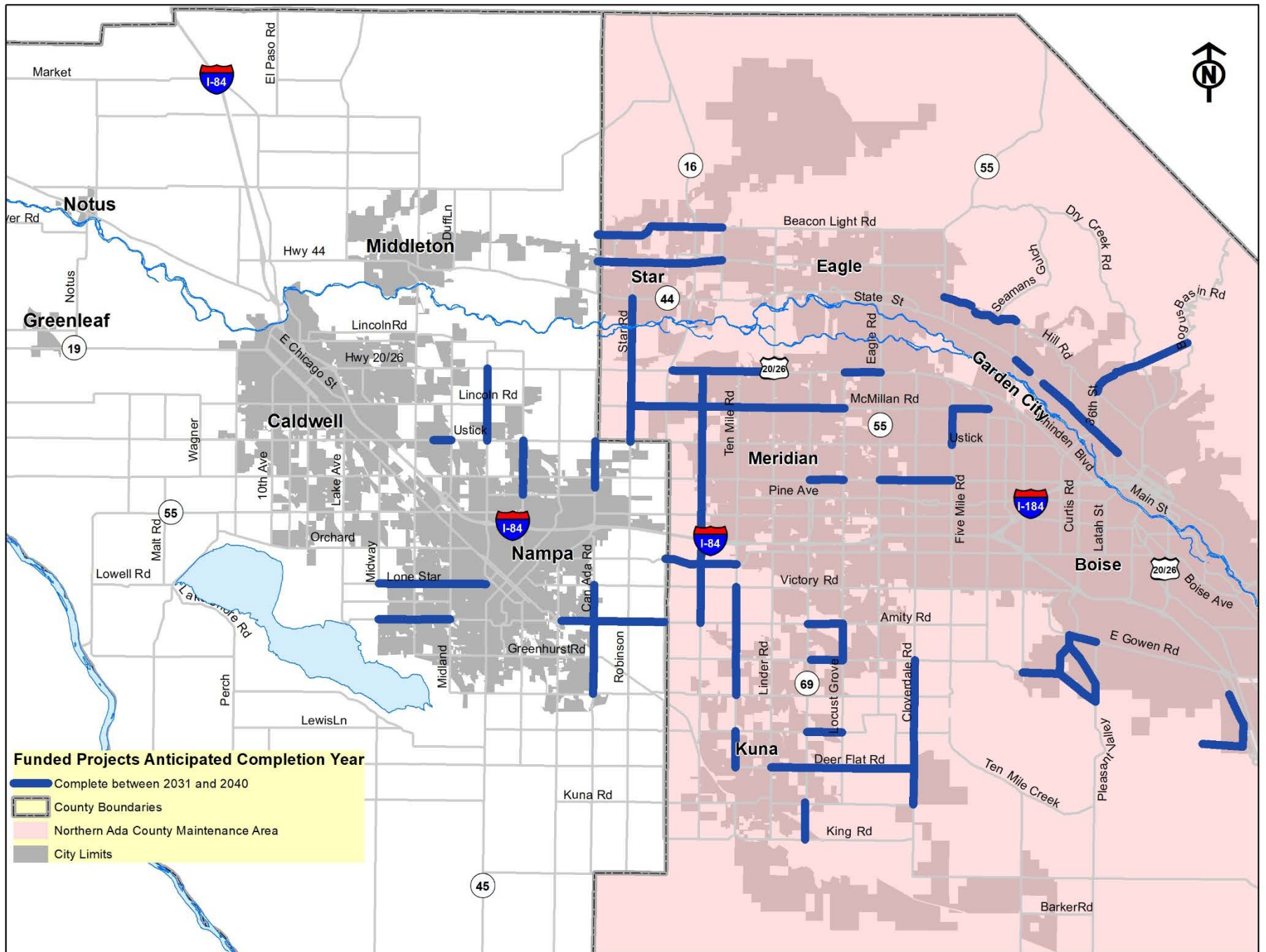


Figure 5: Roadway Projects Complete between 2031 and 2040

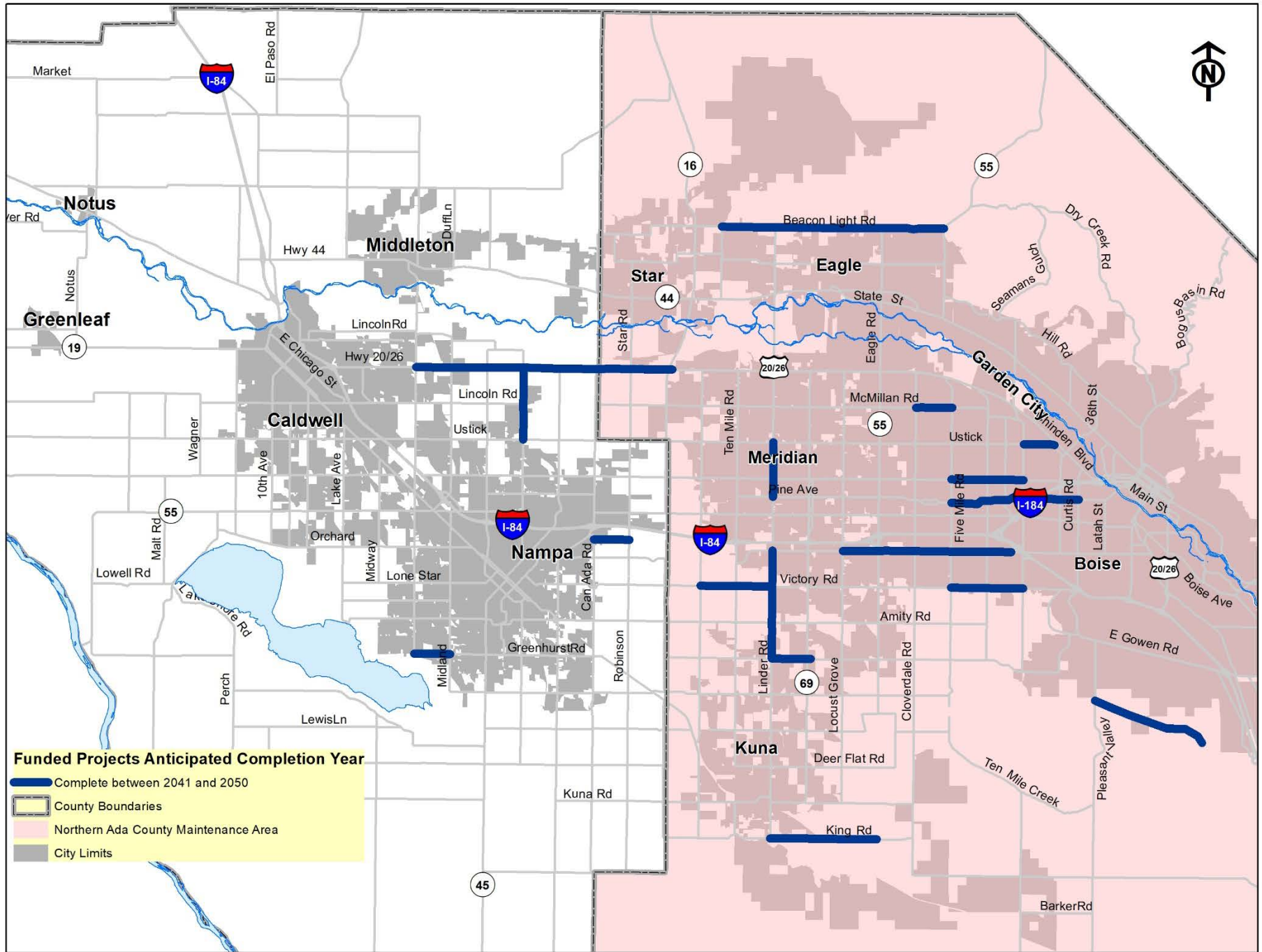


Figure 6: Roadway Projects Complete between 2041 and 2050

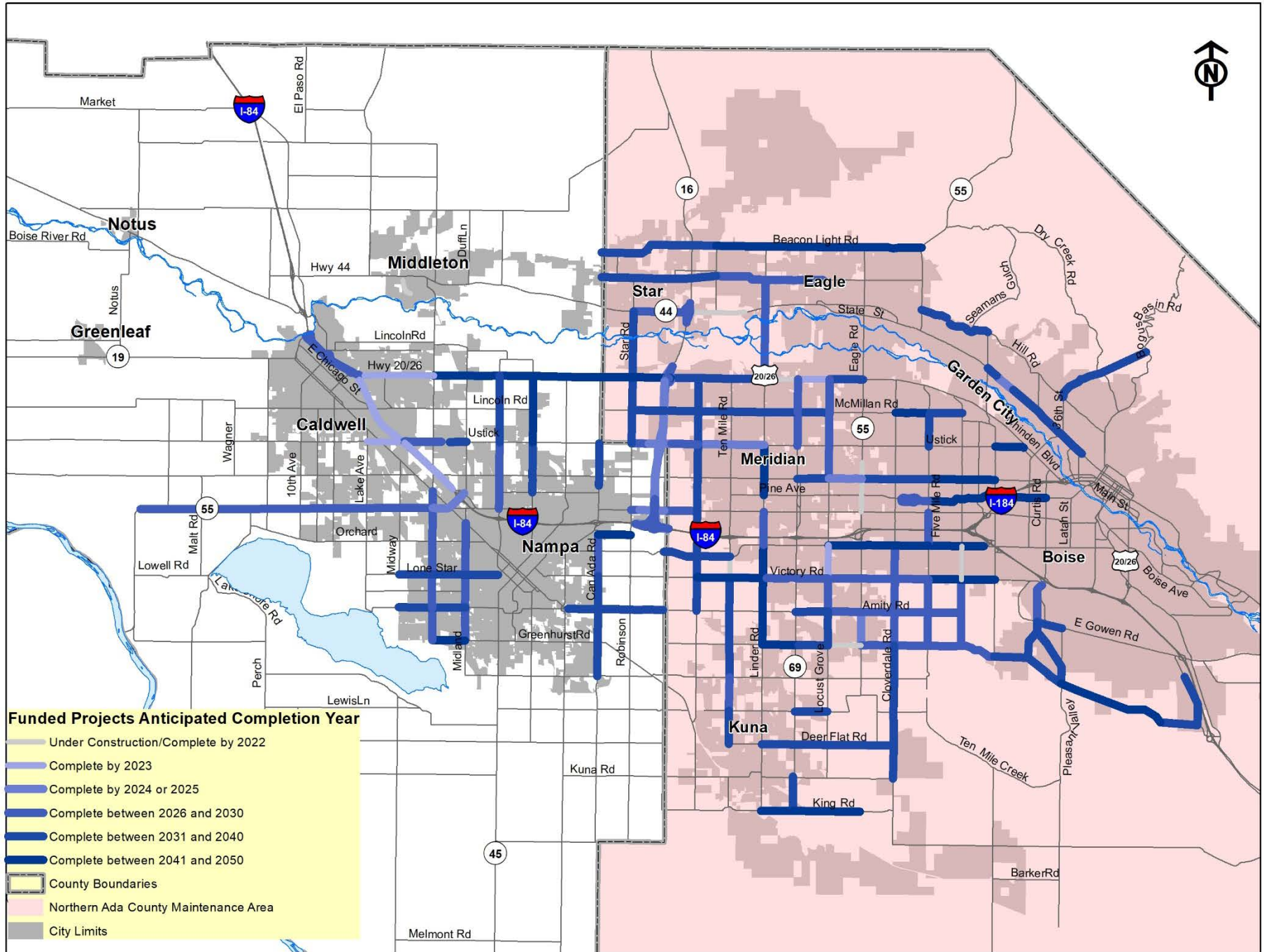


Figure 7: Roadway Projects Under Construction or Complete between 2022 and 2050

INTERAGENCY CONSULTATION COMMITTEE AGENDA ITEM V-A

DATE: June 21, 2022

Topic: Interstate 84 Auxiliary Lane Study

Request/Recommendation:

Idaho Transportation Department (ITD) and COMPASS staff will provide a follow-up to the discussion held during the May 17, 2022, ICC meeting regarding the study.

Background/Summary:

During the May 17, 2022, meeting, ITD staff briefly described the Interstate 84 Auxiliary Lane Study and inquired if this type of project triggered the need for project-level conformity analysis for carbon monoxide. On June 1, 2022, Attachment 1 was sent by COMPASS, on behalf of ITD, to the US Environmental Protection Agency Region X and Federal Highway Administration-Idaho Division seeking guidance on the need for project-level conformity for carbon monoxide.

More Information

- 1) Attachment 1: Interstate 84 Auxiliary Lane Study information
- 2) For detailed information contact: MaryAnn Waldinger, Principal Planner
mwaldinger@compassidaho.org.

MW: T:\FY22\800 System Maintenance\820 Committee Support\ICC\06212022\5Memo I84 Aux Ln Study.docx

ITD Key 23456, I-84 MERIDIAN RD IC TO EAGLE RD IC, DESIGN, MERIDIAN

Purpose

The purpose of the project is to reduce eastbound onramp congestion at the Meridian Interchange (No. 44) and reduce congestion at the eastbound offramp at Eagle Interchange (No. 46).

Project Description

The project proposes to evaluate adding an eastbound auxiliary lane on I-84 between Interchange 44 (Meridian Road) and Interchange 46 (Eagle Road). It also includes an additional lane on the eastbound onramp at Interchange 44 and additional lane on the eastbound offramp at Interchange 46. The auxiliary lane is onramp to offramp and will not extend "through" the Eagle Interchange.

The I-84 Interchange 44 (Meridian Road) to Interchange 46 (Eagle Road) Auxiliary Lane Addition is in northern Ada County (see figure 1), approximately, from MP 44.1 to MP 45. This project proposes converting the existing 12' shoulder to a 12' auxiliary lane and constructing a new 10' shoulder. This project also proposes to widen the eastbound onramp at interchange 44 to accommodate the high traffic volumes entering onto the interstate. The new shoulder will require the relocation of luminaires, signage, storm drain inlets, guardrails, and jersey barriers.

The project is state funded with a federal nexus due to an Interchange Modification Report which requires approval from FHWA. The project is budgeted for FY2022 and as of May 24, 2022, is in the process of negotiating labor hours with the consultant. Currently, construction is still unfunded. ITD anticipates the earliest this project could be funded and constructed is spring of 2024.

ITD is requesting guidance on whether this project requires project-level conformity for CO. Northern Ada County is under a CO limited maintenance plan until December 2022 and a PM₁₀ maintenance plan until November 2023.

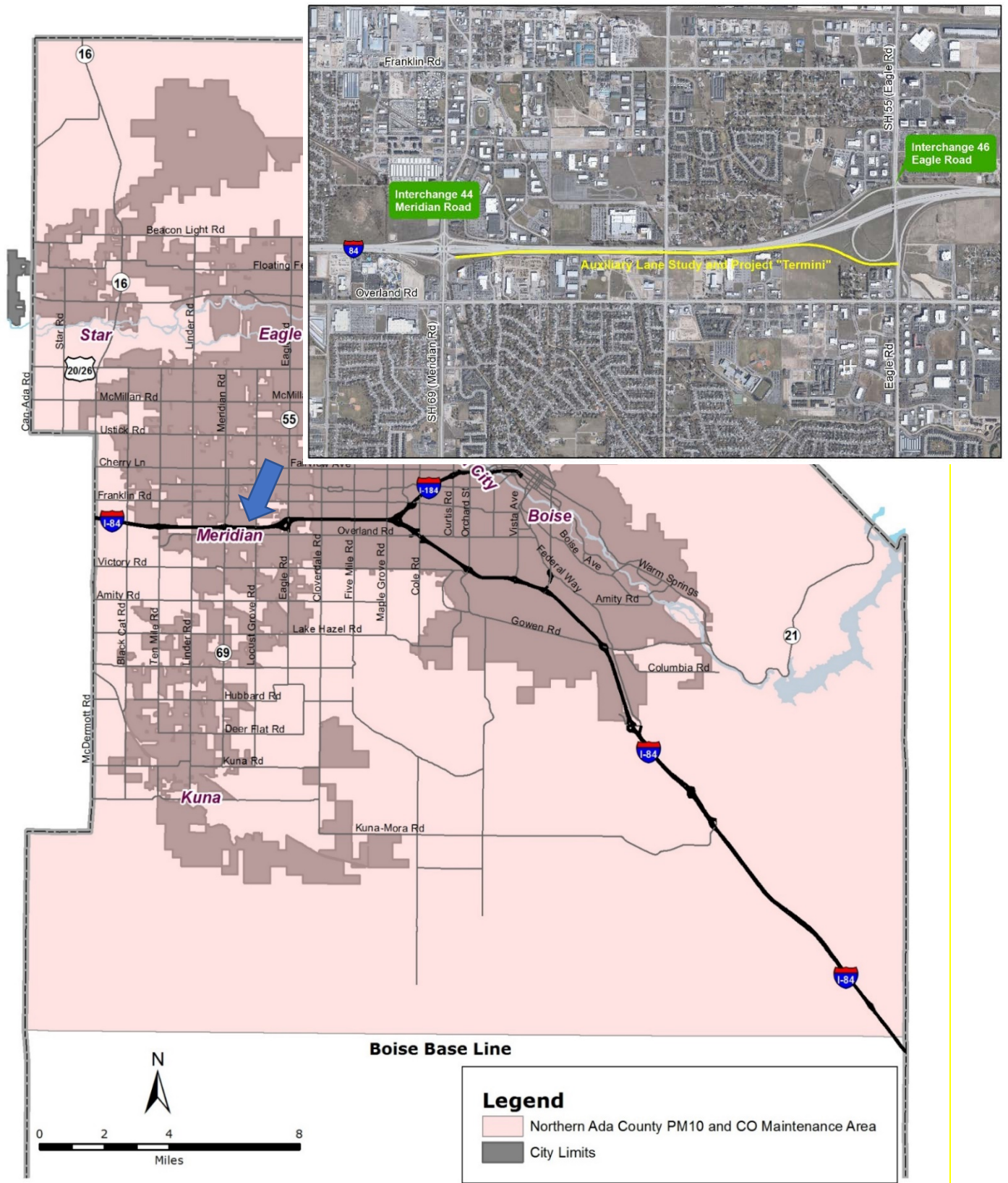


Figure 1: Northern Ada County PM₁₀ and CO Maintenance Area Map