

# Tier 2 – Modes Evaluation

## Step 1:

Assess the suitability of different modes for high-capacity transit within Treasure Valley using the following questions:

- Does the mode improve transit connectivity and reliability?
- How does the mode fit into the existing context of the corridor
- Is the mode financially feasible and constructable?

## Step 2:

Pair Tier 2 routes with appropriate mode.

### Proposed modes not carried forward:

#### LRT:

- » Most expensive mode
- » Requires the most space
- » Safety considerations if operating in the freight rail corridor.
- » Best suited for short, urban routes

#### BRT- Mixed Traffic:

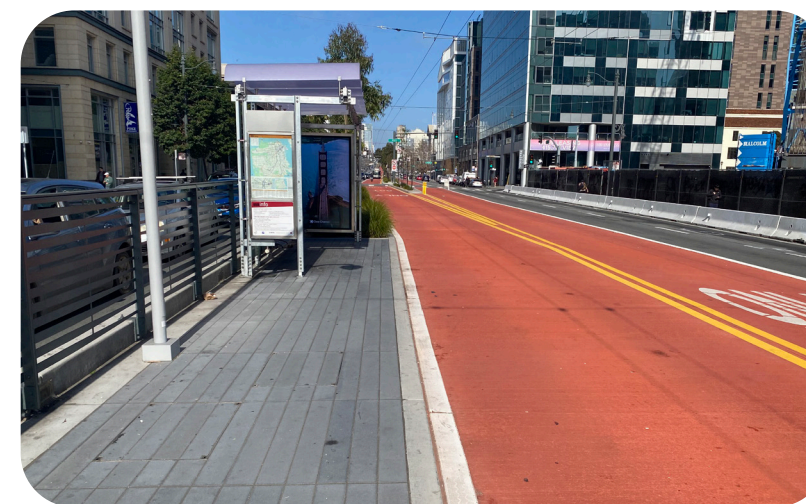
- » Less reliable service compared to other modes.
- » Requires more vehicles to maintain service frequencies

## Mode Evaluation

### Proposed Modes Carried Forward



Regional – Commuter Rail



BRT – Exclusive Guideway



BRT – Business Access and Transit (BAT) Lanes

### Proposed Modes Not Carried Forward



Light Rail Transit



BRT – Mixed Traffic

## Modes Paired with Routes

- Fairview Avenue/Cherry Lane
  - ▶ BRT – Exclusive Guideway (center)
  - ▶ BRT – Business Access and Transit (BAT) Lanes
- Franklin Road
  - ▶ BRT – Exclusive Guideway (center)
  - ▶ BRT – BAT Lanes (side)
- I-84/I-184
  - ▶ BRT – BAT Lanes (side)
- Boise Cutoff
  - ▶ Regional – Commuter Rail