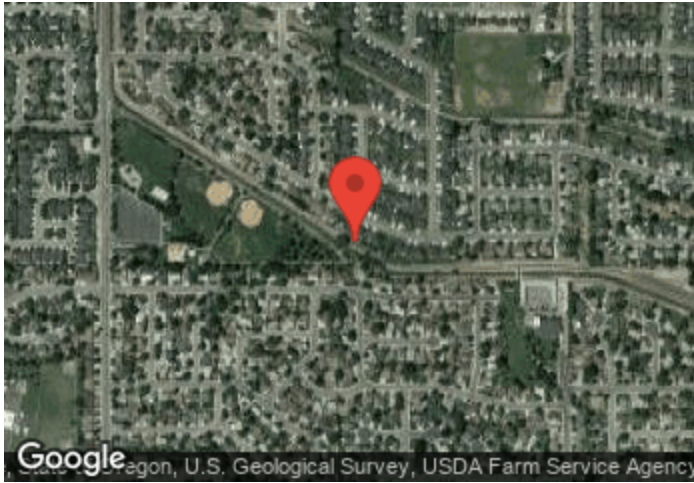


Meridian - Tully Park

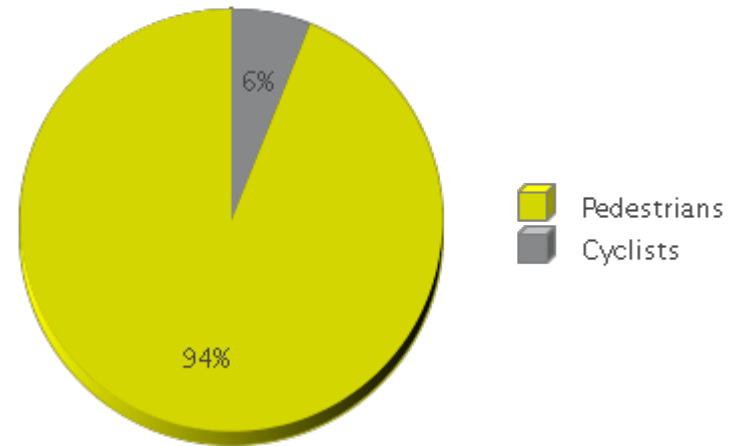
Period Analyzed: Monday, January 01, 2018 to Monday, December 31, 2018



	Total Traffic for the Analyzed Period	Daily Average	Busiest Day of the Week	Busiest Month of the Year	Distribution	
					IN	OUT
Pedestrians	322,173	883	Sunday	July 18: 97,047	92	8
Cyclists	20,880	57	Monday	June 18: 3,644	62	38

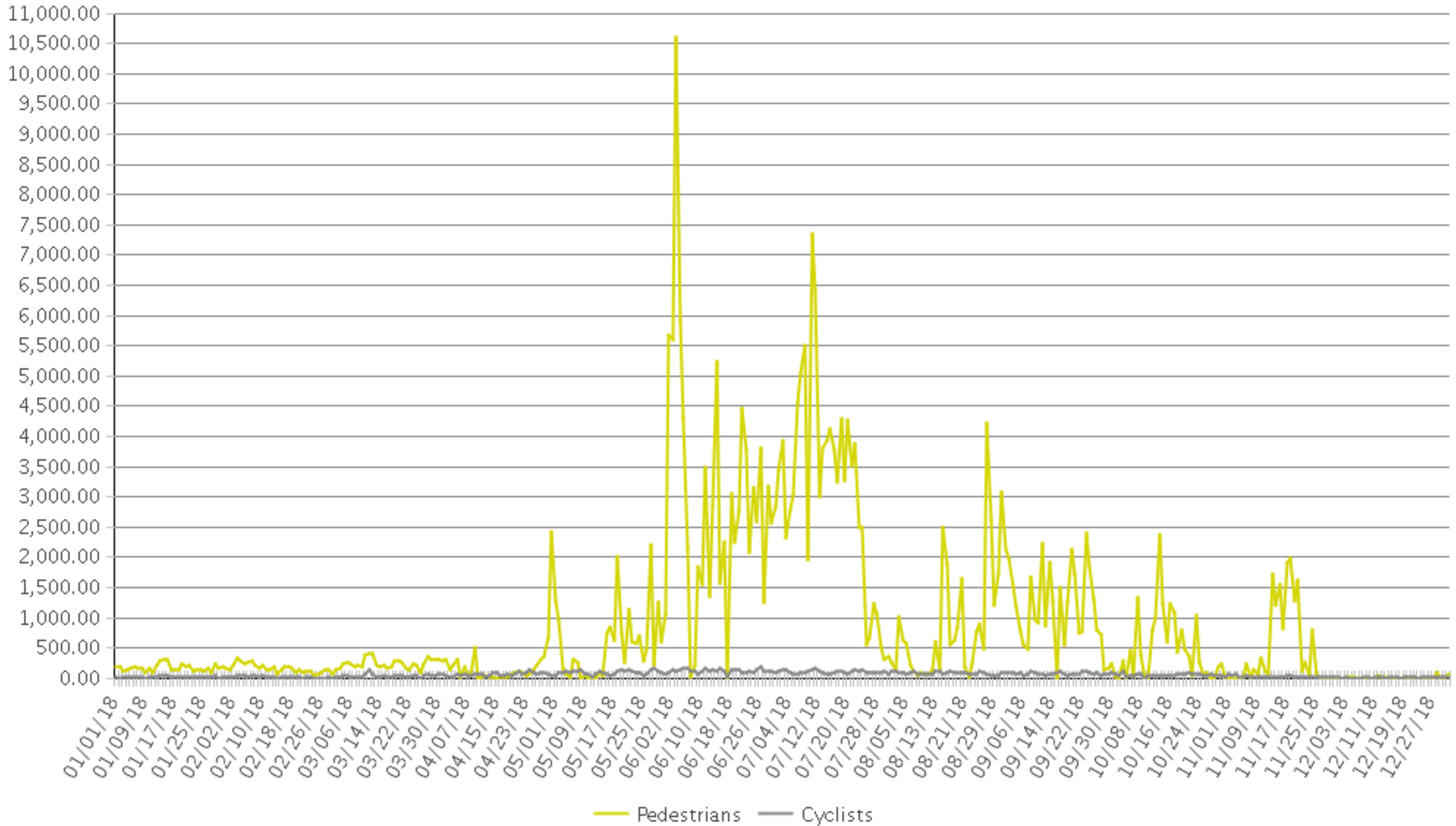
IN: In = West

OUT: Out = East



Meridian - Tully Park

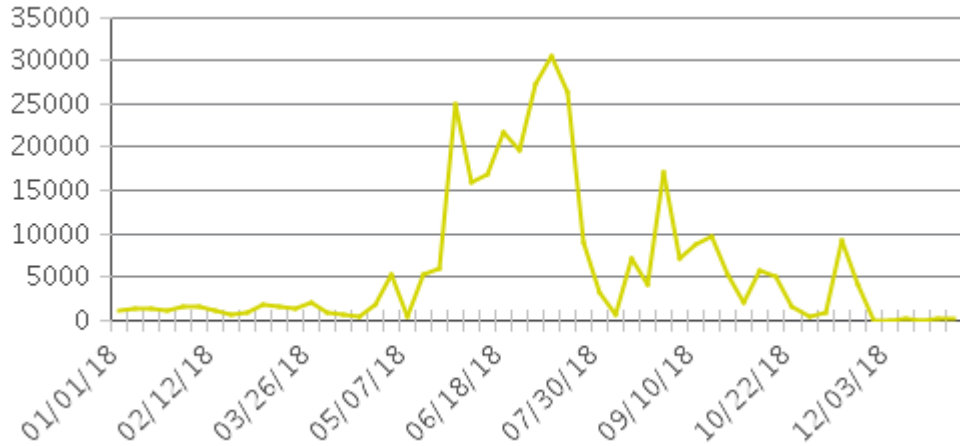
Period Analyzed: Monday, January 01, 2018 to Monday, December 31, 2018



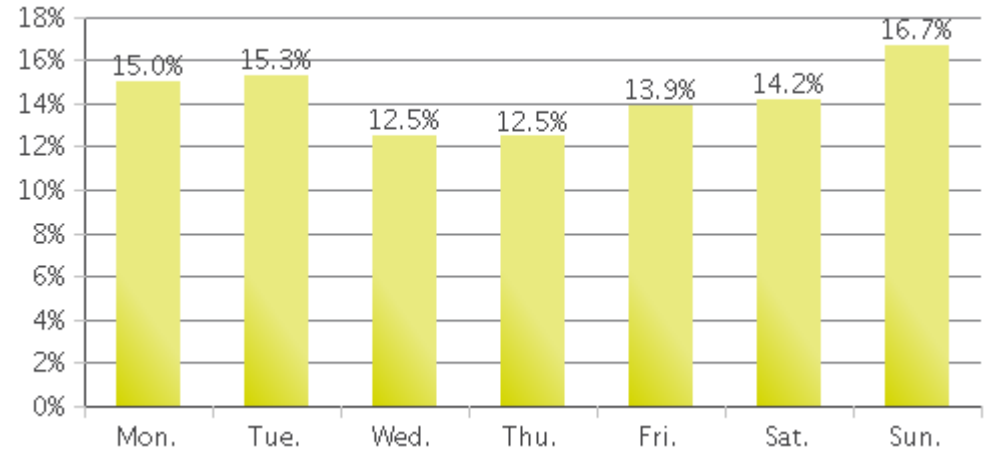
Meridian - Tully Park (Pedestrians)

Period Analyzed: Monday, January 01, 2018 to Monday, December 31, 2018

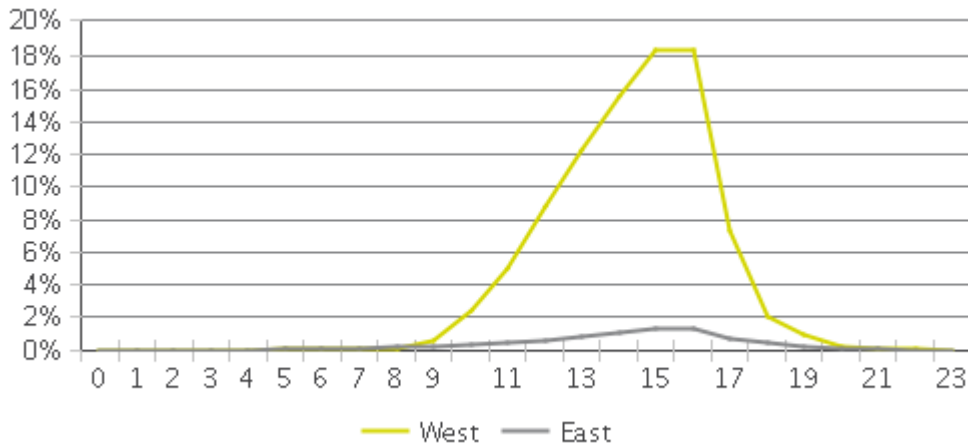
Weekly Traffic



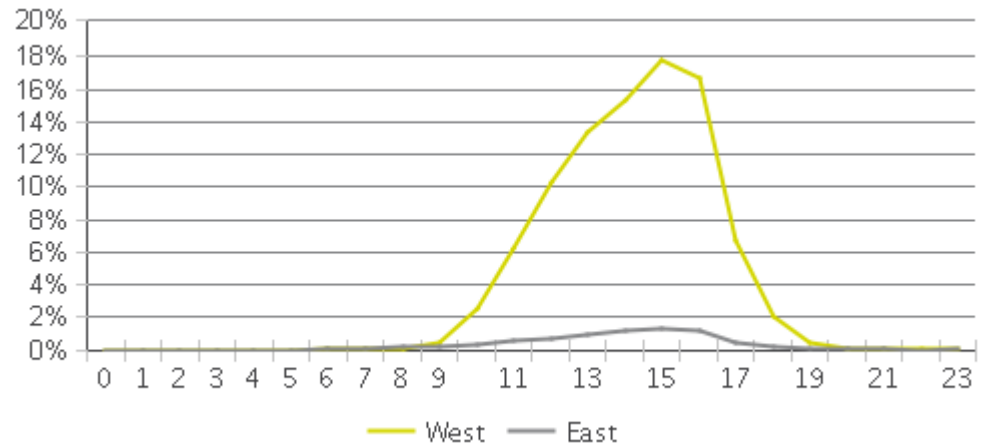
Weekly Profile



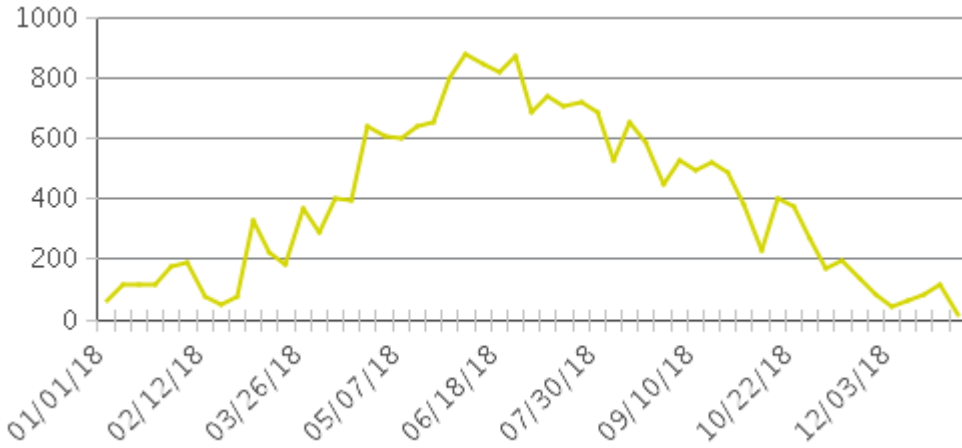
Hourly Profile during Weekdays



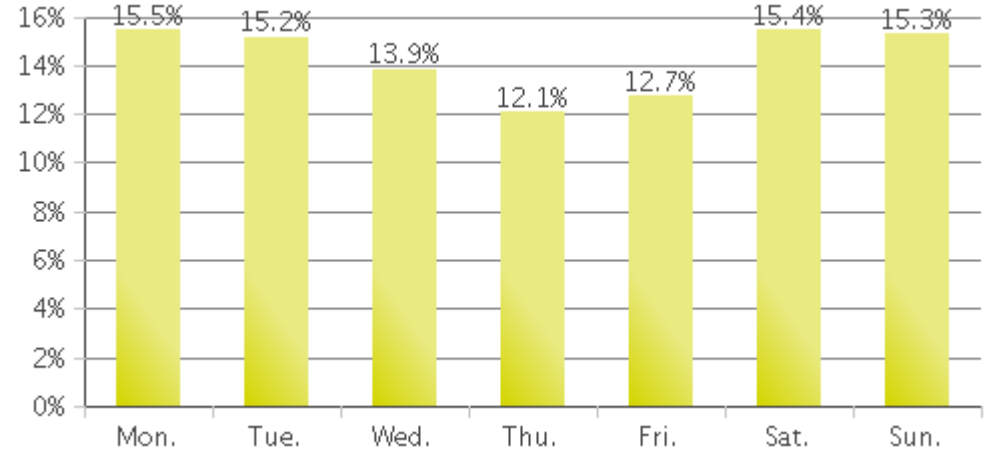
Hourly Profile during the Weekend



Weekly Traffic



Weekly Profile



Hourly Profile during Weekdays



Hourly Profile during the Weekend

