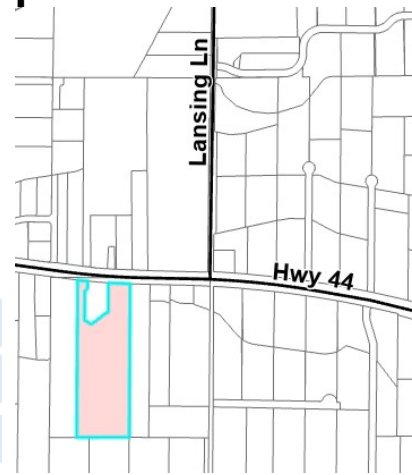


Communities in Motion 2050 Development Checklist

The Community Planning Association of Southwest Idaho (COMPASS) is the metropolitan planning organization (MPO) for Ada and Canyon Counties. COMPASS has developed this review as a tool for local governments to evaluate whether land developments are consistent with the goals of Communities in Motion 2050 (CIM 2050), the regional long-range transportation plan for Ada and Canyon Counties. This checklist is not intended to be prescriptive, but rather a guidance document based on CIM 2050 goals.



Development Name: Middleton Retail and Storage Units
CIM Vision Category: Future Neighborhood **New Jobs:** ±65
CIM Corridor: State Highway 44 **New Households:** 0



Safety

Level of Stress measures how safe and comfortable a bicyclist or pedestrian would feel on a corridor and considers multimodal infrastructure number of vehicle lanes and travel speeds.

- Pedestrian level of stress
- Bicycle level of stress



Economic Vitality

These tools evaluate whether the location of the proposal supports economic vitality by growing near existing public services.

- Activity Center Access
- Farmland Preservation
- Net Fiscal Impact
- Within CIM Forecast



Convenience

Residents who live or work less than 1/2 mile from critical services have more transportation choices, especially for vulnerable populations

- Nearest bus stop
- Nearest public school
- Nearest public park



Quality of Life

Checked boxes indicate that additional information is attached.

- Active Transportation
- Automobile Transportation
- Public Transportation
- Roadway Capacity



Improves performance



Does not improve or reduce performance



Reduces performance

Comments:

The project is proposed along State Highway 44. State Highway 44 from Interstate 84 to Star Road is the number 5 unfunded state system priority in [Communities in Motion 2050](#). Starting in fiscal year 2023, the Idaho Transportation Department will conduct a [Planning and Environmental Linkages Study](#) on that segment to evaluate widening or realignment options. Ensure that future site plans provide cross access points to reduce the number of access points to State Highway 44.

Communities in Motion 2050
[2020 Change in Motion Report](#)
[Development Review Process](#)

Web: www.compassidaho.org
 Email: info@compassidaho.org



Roadway Capacity

The [COMPASS transportation improvement program \(TIP\)](#) is a short-range (seven-year) budget of transportation projects for which federal funds are anticipated, along with non-federally funded projects that are regionally significant. The following project (s) are nearby the proposed site location:

Study (PEL and NEPA), SH-44, I-84 to Star Road, Canyon County

Regionally Significant: Inflated TIP Achievement:

Key #: 23630 Support

Requesting Agency: ITD

Project Year: 2023

Total Previous Allocations: \$0

Total Programmed Budget: \$3,000

Total Cost (Prev. + Prog.): \$3,000

Project Description

Conduct a Planning and Environmental Linkages (PEL) and National Environmental Policy Act (NEPA) study to evaluate the environmental impacts of widening or realigning State Highway 44 between Interstate 84 and Star Road in Canyon County.



Funding Source	STBG-State		Program State Hwy - Early Development				Local Match 7.34%			
	Cost Year*	Preliminary Engineering	Preliminary Engineering Consulting	Right-of-Way	Utilities	Construction Engineering	Construction	Total	Federal Share	Local Share
2023	0	3,000	0	0	0	0	0	3,000	2,780	220
Fund Totals:	\$0	\$3,000	\$0	\$0	\$0	\$0	\$0	\$3,000	\$2,780	\$220

Fiscal Impact Analysis Supplemental for the Development Review Checklist

The purpose of the fiscal impact analysis is to better estimate expected revenues and costs to local governments as a result of new development so that the public, stakeholders, and the decision-makers can better manage growth. Capital and operating expenditures are determined by various factors that determine service and infrastructure needs, including persons per household, student generation rates, lot sizes, street frontages, vehicle trip and trip adjustment factors, average trip lengths, construction values, income, discretionary spending, and employment densities.


The COMPASS Development Checklist considers the level of fiscal benefits, how many public agencies benefit or are burdened by additional growth, and how long the proposal will take to achieve a fiscal break-even point, if at all.


More information about the COMPASS Fiscal Impact Tool is available at:

www.compassidaho.org/prodserv/fiscalimpact.htm

Overall Net Fiscal Impact Net Fiscal Impact by Agency

N/A City

 County

 Highway District

N/A School District

Break Even: 1 year