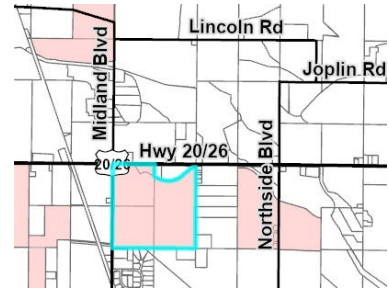


Communities in Motion (CIM) Development Review Checklist

Development Name:	Midland 20-26
CIM Vision Category:	Future Neighborhood
Consistent with CIM Vision ?	NO
New Households:	±1470
New Jobs:	±1000

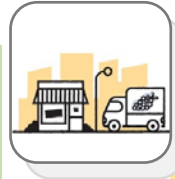


Safety
How safe and comfortable is the nearest major road (minor arterial or above) for bicyclists and pedestrians? Analysis is limited to existing roadway conditions.

Midland Boulevard

Pedestrian level of stress

Bicycle level of stress



Economic Vitality
To what extent does the project enable people, government, and businesses to prosper?

Economic Activity Center Access

Impact on Existing Surrounding Farmland

Net Fiscal Impact



Convenience
What services are available within 0.5 miles (green) or 1 mile (yellow) of the project?

Nearest bus stop

Nearest public school

Nearest public park



Quality of Life
Checked boxes indicate that additional information is attached.

Active Transportation

Automobile Transportation

Public Transportation

Roadway Projects



Improves performance



Does not improve or reduce performance



Reduces performance

Comments:

This proposal exceeds new job growth forecasted for this area. However, it is below the forecasted number of households for the area. Jobs plus households are generally consistent with *Communities in Motion 2050 Vision*.

Who we are: The Community Planning Association of Southwest Idaho (COMPASS) is the metropolitan planning organization for Ada and Canyon Counties. This review evaluates whether land developments are consistent with *Communities in Motion*, the regional long-range transportation plan for Ada and Canyon Counties. This checklist is not intended to be prescriptive, but rather a guidance document. Past checklists are available [online](#). See the [Development Review User Guide](#) for more information on the red, yellow, and green checklist thresholds.

Sent: 2/5/24



<https://compassidaho.org/>



info@compassidaho.org



Complete Network Appendix

Checkmarks (✓) below indicate suggested changes to a site plan, based on the [COMPASS Complete Network Policy \(No. 2022-01\)](#). Both the Complete Network Policy and site-specific suggestions are intended to better align land use with identified transportation uses in the corridor. Please see the Complete Network [map](#) for primary and secondary uses for roadways (minor arterial and above) in Ada and Canyon Counties.

Corridor Name: Midland Boulevard

Primary Use: Public Transportation

Secondary Use: N/A

Access Management

- ✓ Provide stub roads to help enable future connections between properties and reduce the need for access to high-speed, high-volume roadways

Fiscal Impact Analysis

Below are the expected revenues and costs to local governments from this project. The purpose of this analysis is to help the public, stakeholders, and the decision-makers better manage growth.

Capital and operating expenditures are determined based on service and infrastructure needs, including persons per household, student generation rates, lot sizes, street frontages, vehicle trip and trip adjustment factors, average trip lengths, construction values, income, discretionary spending, and employment densities.

Net Fiscal Impact by Agency



City



County



Highway District



School District

Breakeven point across all agencies: 1-year

Additional Information:

- Widening US Highway 20/26 (Middleton Road to Star Road) is not included as a capital expense in the fiscal impact analysis.
- Widening Midland Boulevard (Cherry Lane to US Highway 20/26) is not included as a capital expense in the fiscal impact analysis.

Disclaimer: This tool only looks out 20 years and does not include replacement costs for infrastructure, public utilities, or unfunded transportation needs in the project area. More information about the COMPASS Fiscal Impact Tool is available at:

<https://compassidaho.org/fiscal-impact-tool/>

Long-Term Funded and Unfunded Capital Projects

CIM Priority Corridor:

Midland Boulevard (Cherry Lane to US Highway 20/26)

Widening Midland Boulevard (Cherry Lane to US Highway 20/26) to five lanes is the number 8 priority in the Local System Roadway in *Communities in Motion 2050*. It is unfunded.

More information on transportation needs and projects based on forecasted future growth is available at: <https://cim2050.compassidaho.org/projects-and-priorities/project-priorities/>

Short-Term Funded Capital Projects

US 20/26, Middleton Road to Star Road, Ada and Canyon Counties

Regionally Significant:

Key #: 23337

Requesting Agency: ITD

Project Year: 2025

Total Previous Allocations: \$61,034

Total Programmed Budget \$27,721

Total Cost (Prev. + Prog.): \$88,755

TIP Achievement:

NHS-LOTTR

Active Transportation

Safety

System Performance



Project Description

Preliminary engineering and right-of-way acquisition to widen US 20/26 from Middleton Road in the City of Caldwell to Star Road in Ada County. Work will include widening the corridor from two lanes to five lanes (two through lanes each direction and a center turn lane). Intersection improvements will include signalization at the mile. Construction funding is included in KN ORN24309 and ORN24310.

Funding Source			Program				State Hwy - Safety & Capacity (Capacity)			Local Match 100.00%	
Cost Year*	Preliminary Engineering	Preliminary Engineering Consulting	Right-of-Way	Utilities	Construction Engineering	Construction	Total	Federal Share	Local Share		
2024	0	0	24,151	0	0	0	24,151	0	24,151		
Fund Totals:	0	0	24,151	0	0	0	24,151	0	24,151		

Funding Source			Program				Local Match 100.00%		
Cost Year*	Preliminary Engineering	Preliminary Engineering Consulting	Right-of-Way	Utilities	Construction Engineering	Construction	Total	Federal Share	Local Share
2024	0	0	570	3,000	0	0	3,570	0	3,570
Fund Totals:	0	0	570	3,000	0	0	3,570	0	3,570

Source: *The COMPASS Transportation Improvement Program (TIP)*. *The TIP is a short-range (seven-year) budget of transportation projects for which federal funds are anticipated, along with non-federally funded projects that are regionally significant and is available at:*

<https://compassidaho.org/transportation-improvement-program/>