

Active Transportation Project Scoring			Notes:
Garrity Side Path, Stamm Lane to Carnation Drive CIM Score	Pts.	Max pts.	
CIM project score high priority = 10 points, medium priority = 5 points, and low priority = 3 points, if anywhere on the listed corridor.	5	10	Proximity to Rail with Trail Boise Spur (med) (1/2 mile away from western Garrity pathway terminus)
<b>Safety</b>			
Does the project address a known active transportation safety issue?	30	30	Bike/Ped K-1 A-2 B-5 C-5 fix with separated, wider sidewalk
Does the project improve safety for active transportation users?	10	10	Multiple CMFs. Total average decrease 25.35%
<b>Total:</b>	<b>40</b>	<b>40</b>	scored higher, reduced to fit max.
<b>Economic Vitality</b>			
Does the project address a priority gap in the active transportation network?	5	10	Does not address a gap. Addresses gap in CIM2050 pathays medium.
Does the project improve a facility in "fair" or "poor" condition?	5	10	Poor condition.
Does the project provide an active mode alternative to a congested roadway segment?	3	5	Adjacent to Garrity, a medium congested corridor, and will improve active facilities
<b>Total:</b>	<b>13</b>	<b>25</b>	
<b>Convenience</b>			
Does the project improve active mode connectivity to public transportation?	10	10	Current Route 40
Does the project improve active mode connectivity to key destinations?	10	10	Multiple key destinations within 1/2 mile
<b>Total:</b>	<b>20</b>	<b>20</b>	
<b>Quality of Life</b>			
Does the project benefit an underserved area?	10	10	Index 5-12
Does the project address an environmental impact?	0	5	No response.
Does the project address an existing Americans with Disabilities Act (ADA) compliance issue?	5	5	existing sidewalk is deteriorating and not compliant. Project will make compliant.
<b>Total:</b>	<b>15</b>	<b>15</b>	
<b>Performance Total:</b>	<b>93</b>	<b>110</b>	
<b>Readiness and Support</b>			
Is the project a priority to the sponsor agency?	3	10	5 of 12
Does the sponsor agency provide match above the required minimum?	0	10	required match.
Is the project ready for Federal implementation?	1	10	Pre-concept report complete
<b>Programming Total:</b>	<b>4</b>	<b>30</b>	
<b>Total Score:</b>	<b>97</b>	<b>140</b>	



## Garrity Side Path

The project intends to extend the sidewalk width along the south-eastern side of Garrity Blvd, from N 39<sup>th</sup> St to Sugar St. A portion of this project has already been funded for a future construction year, which will complete the project from Stamm Ln to N 39<sup>th</sup> St.

# 2025 COMPASS Funding Application

## Phase I

### All Projects

All applications must be submitted in Word format by email to [ssader@COMPASSidaho.org](mailto:ssader@COMPASSidaho.org). This phase of the application page limit is 10 pages.

#### DETAILS

**Sponsor Name (agency):** [City of Nampa](#)

**Main Agency Contact:** [Lauren Locklear, 208-565-5166, locklearl@cityofnampa.us](#)

**Project Title:** [Garrity Side Path, Stamm Ln to Carnation Dr](#)

#### PROJECT DETAILS

**Briefly describe the location of the project:**

The project is located along Garrity Blvd, between the I-84 interchange and 16th Ave N. The area is a dense commercial/retail corridor, and a major commuter route.

**Does the sponsor own the right-of-way for this project?**

- Yes
- No
- N/A

If no, a letter of support from the owner(s) **is required** to ensure their involvement and approval prior to submission.

Explain:

**Does the project include improvements to the public transportation system?**

- Yes
- No

If yes, a letter of support from the public transportation agency where the project is located **is required** to ensure its involvement and approval is required prior to submission.

## PURPOSE AND NEED

**Describe the complete project in detail including why this project is important to your agency and to the region** (please reference [Communities in Motion 2050](#) goals and objectives as well as performance measures and targets):

The project intends to extend the sidewalk width along the south-eastern side of Garrity Blvd. Garrity Blvd is a five-lane cross section, with a narrow bike lane along some of the corridor. A pedestrian fatality occurred in 2021 from a vehicular "side swipe" incident. A side path will provide a safe and comfortable facility for people walking and biking. This improves the safety of pedestrians, removes cyclists from the roadway, and increases the quality of all users. Curb ramps will also be improved to better comply with ADA requirements. The numerous existing landscape strips along the corridor are broken up by access drives for businesses, and maintenance of the strips is time consuming for our Parks department.

Landscape strips will be removed and paved, replacing existing trees with a varietal more suited to the impacts of traffic proximity, to reduce the burden on our Parks Department. In addition to allowing Parks to reallocate their time and budget to other areas of the city, removing the turf will reduce water/irrigation usage. Lighting will also be assessed to ensure adequate visibility for the safety of pedestrian and vehicular traffic along the route.

This project will greatly contribute to the safety, convenience, and quality of life for active transportation. The project proactively assess risks and safeguard the security of all transportation users and infrastructure and will support a resilient transportation system by anticipating societal, climatic, and other changes; maintaining plans for response and recovery; and adapting to changes as they arise. The project will provide safer connectivity, improve accessibility and mobility, and contributes to the development a regional transportation system that provides access and mobility for all users via safe, efficient, and convenient transportation options. The project will provide equitable access to safe, affordable, and reliable transportation options.

## FUNDING REQUEST / PROJECT TYPE

**What type of funding are you applying for? (select all that apply)** If you're unsure, contact COMPASS staff.

- Project Development Program (PDP)** – consultant cost of up to \$50,000
- CIM Implementation Grant Program** – reimbursement of up to \$50,000
- Federal Funds** – this option will require further information provided in Phase II
- Staff Assistance Only** – this option will remove the application from the priority ranking but include it in the Resource Development Plan for funding support

**What type of project are you applying for? (select all that apply)**

- Capital/Construction:** Road / Bridge / Design / Signs, etc.
- Public Transportation:** Vehicles / Equipment / Maintenance / Operations
- Active Transportation:** Bicycle / Pedestrian
- Planning:** Plans / Studies / Education / Outreach
- Special Groups:** Youth / Seniors / Disabled / Underserved Area
- Technology / Data**
- Other**

If other, please describe:

## PROJECT BUDGET

**Provide a total cost estimate and amount requested for the following project tasks or activities:** If you continue in the process for federal-aid funding, you will be required to provide a much more detailed budget in Phase II. If needed, costs may be adjusted at that time.

**Total Project Cost:** \$2,225,000

**Amount Requested** (total cost minus any local match): \$2,061,685

**Proposed local match** (amount): \$163,315

**Proposed local match** (percentage): 7.34%

Please describe how you arrived at the cost estimates (previous similar project, design complete, etc.):

Concept level cost estimate.

**What is the source of the match?**

City general budget.

**Is this a project that can be phased** (segmented into sub-units; does not include splitting out design from construction)?

Yes

No

If yes, indicate how your project can be phased and provide amounts:

The side path conversion will begin near existing facilities at the I-84 interchange and be constructed further to the south as funds allow. This project can be phased to meet any funding budget.

## PARTNERS/SUPPORT

**Are other jurisdictional agencies or partners involved in this project?**

No

Yes

If yes, list the jurisdictional agencies and other partners and their role in the project:

Idaho Transportation Department

**Has any public involvement been conducted for this project?**

No

Yes

If yes, describe the results of those public involvement initiatives:

The Nampa Bike and Pedestrian Master Plan included a robust public engagement component ahead of its adoption by Council. Public input was gathered through a variety of tools including

steering committee development and meetings, an online survey, interactive web maps, and an open house event. This project is recognized on page 68.

## READINESS TO PROCEED

**Has any work been completed on this project?** (Mark all phases that are complete)

- Not applicable
- Nothing is complete
- Preliminary Design (concept) – 30% of design
- Final Design
- Environmental Review
- Utilities
- Right-of-Way

Explain, if necessary:

**If design has been started, does it meet federal standards?** Federal standards are described in the [Local Public Agency Projects Guide](#)<sup>1</sup> within the Idaho Transportation Department's Manual.

- Yes
- No
- N/A

Explain, if necessary:

## PLANNING DOCUMENTS

**Does this project conform to a local or regional plan?**

- Yes
- No

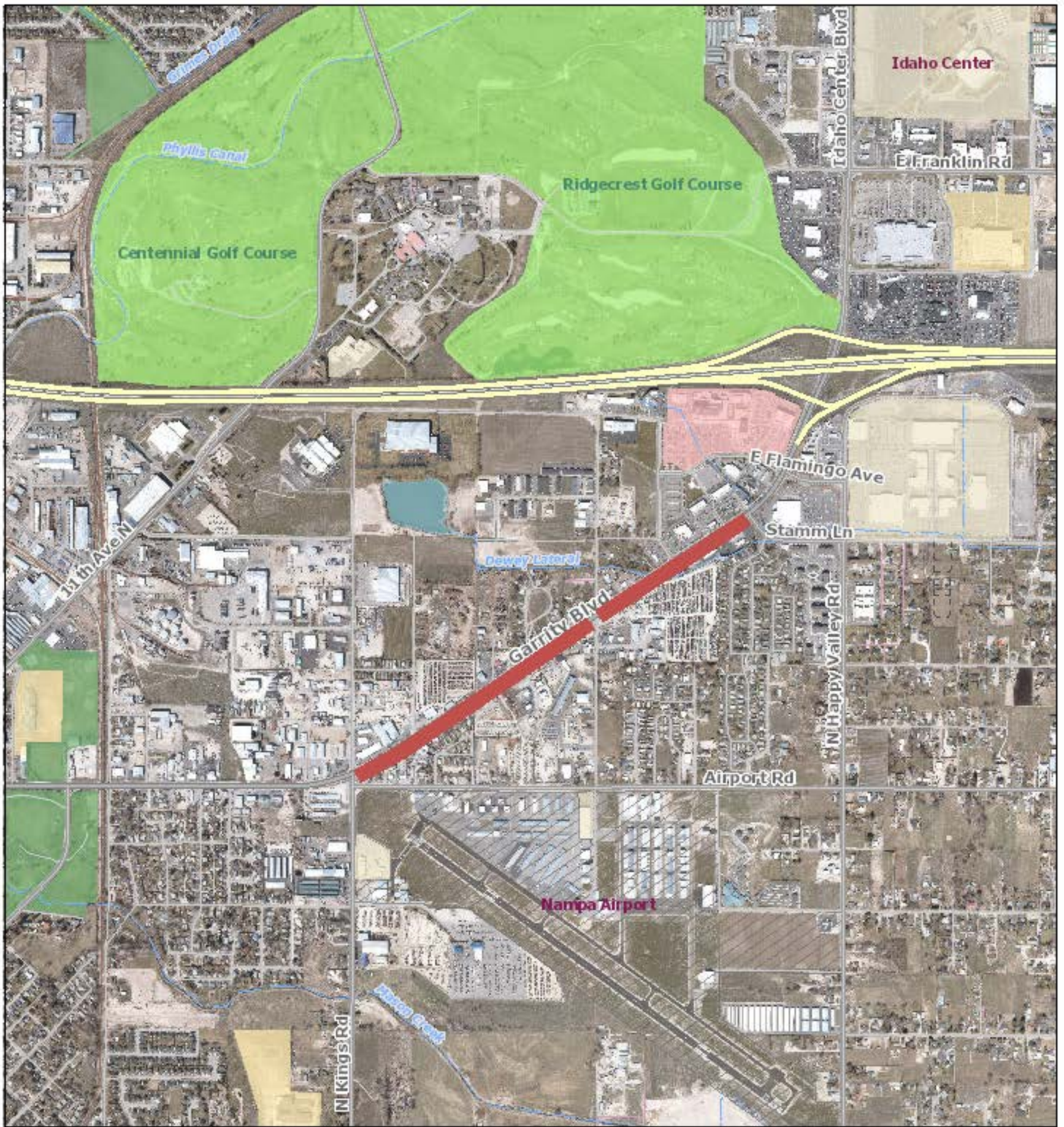
Explain: (reference the plan(s) with title/link and provide approval dates)

[2019 Transportation Masterplan](#)

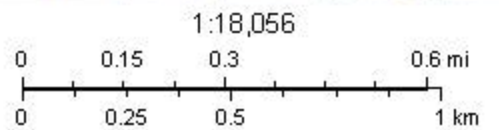
[Nampa Bike and Pedestrian Master Plan](#)

<sup>1</sup> <https://apps.itd.idaho.gov/Apps/manuals/ManualsOnline.html>

# Garrity Blvd Side Path



5/4/2022, 9:36:06 AM



Nampa GIS, GeoTerra, Inc.

## **Request Authorization to Submit Federal Grant Funding Applications in Fiscal Year 2023 for City Transportation Projects**

- Annually, the City of Nampa (City) competes for federal grant dollars to enhance transportation safety, add capital infrastructure, and help augment funding shortfalls. The City selects projects using the Transportation Master Plan, Bike and Pedestrian Master Plan and evaluating current safety and efficiency needs. Projects are prioritized by the planning group annually. The City is constantly updating its priority project list to take advantage of additional funding sources that come available
- Strategically selecting projects and competing for funding is a collaborative process. The grant planning team is made up of staff from the following City departments and/or divisions: Public Works Admin, Finance, Planning and Zoning, Parks, Streets, Economic Development, and Engineering. The group also coordinates with Idaho Transportation Department (ITD), Community Planning Association of Southwest Idaho (COMPASS) Regional Planning, Nampa Police, Nampa School District, Northwest Nazarene University, Cities of Caldwell, Middleton, Meridian and Kuna, Nampa Highway District 1, Canyon Highway District 4 and other stakeholders
- Grant applications are anticipated for the following programs:
  - Local Highway Safety Improvement Program (LHSIP) for safety improvement projects at high accident locations
  - COMPASS Development and Implementation Grants to help identify, develop, and implement possible grant projects for future funding
  - Children Pedestrian Safety Program (CPSP) for pedestrian safety improvements to paths/sidewalks, connecting sidewalks/paths, ADA ramps, and pedestrian crossing facilities
  - Transportation Alternative Program (TAP) to provide for variety of alternative transportation projects to address the needs of nonmotorized users
  - Freight Grant to help identify public roads in an urbanized area providing access and connection to the primary highway freight system and the interstate with other important ports, public transportation facilities, or other intermodal freight facilities
  - Rural Surface Transportation Grant (RSTP) support projects to improve and expand the surface transportation infrastructure in rural areas to increase connectivity, improve the safety and reliability of the movement of people and freight, and generate regional economic growth and improve quality of life
  - Strengthening Mobility and Revolutionizing Transportation (SMART) funds purpose-driven innovation and focus on building data and technology capacity and expertise. The Program seeks proposals from public sector entities that will carry out demonstration projects
  - Advanced Transportation Technology and Innovation (ATTAIN) promotes advanced technologies to improve safety and reduce travel times for drivers and transit riders and that can serve as national examples
  - Bridge Investment Program (BIP) focuses on existing bridges to reduce the overall number of bridges in poor condition, or in fair condition at risk of falling into poor condition
  - Reconnecting Communities Pilot Program (RCP) supports planning grants and capital construction grants, as well as technical assistance, to restore community connectivity through the removal, retrofit, mitigation, or replacement of eligible transportation infrastructure facilities



- Airport Terminal Program (ATP) funds improvements that aim to build two new air traffic control towers, all while expanding capacity at airport terminals, increasing energy efficiency, improving accessibility, and promoting competition
- Staff requests the following projects be submitted for grant funding in FY23. Detailed project descriptions can be found on the FY23 Transportation Grant Pursuits Summary (Exhibit A), a \* indicates resubmission of previously authorized application:
  - **Compass Development and Implementation Grants**
    - Airport Rd & N 39th St Intersection Improvements
    - Franklin Blvd & Cherry Ln Intersection Improvements
    - Garrity Blvd and N 39th St Intersection Improvements
    - Garrity Blvd and Stamm Ln, WINCO Block Improvements\*
    - Garrity Blvd Rail Overpass, Realignment, & Ped Improvements
    - Garrity Side Path, Stamm Ln to Carnation\*
    - I-84SH-16 Interchange Southerly Connection
    - Locust Ln & Happy Valley Rd Intersection Improvements
    - Madison Rd & Ustick Rd Intersection Improvements
    - Middleton Rd & Elijah Drain Rebuild, Karcher to Flamingo\*
    - Midland and Marketplace Traffic and Safety Improvements\*
    - Northside Blvd & Cherry Ln Intersection Improvements
    - Northside Blvd & Ustick Rd Intersection Improvements
    - Northside Blvd Widening, Birch Ln to Cherry Ln
    - Orr Multi-Use City Pathway\*
    - Robinson Blvd & Greenhurst Rd RRX Elimination\*
    - SH45 Realignment NEPA
    - West Park Ped Improvements
    - Matthew Peltzer Trailhead at Wilson Path
    - Karcher Road Widening and Pedestrian Improvements
    - Garrity Blvd & N 39th St Area Airport & Museum Access Improvements
  - **Children Pedestrian Safety Program**
    - Safe Routes to School Sidewalk Gap fill project and/or school crossing RRFB installation project (multiple locations in vicinity schools)
  - **Local Highway Safety Improvement Program**
    - Garrity Blvd and Stamm Ln, WINCO Block Improvements
  - **Transportation Alternative Program**
    - Garrity Boulevard Side Path
  - **Freight Grant**
    - Northside Blvd Corridor Improvements
  - **Rural Surface Transportation Grant**
    - Franklin Blvd Corridor, I-84 to Cherry
  - **Strengthening Mobility and Revolutionizing Transportation (SMART)**
    - Intelligent Transportation Systems Planning Project\*
  - **Advanced Transportation Technology and Innovation (ATTAIN)**
    - Intelligent Transportation Systems Implementation Project\*
  - **Bridge Investment Program (BIP)**
    - Franklin Blvd Rebuild, Industrial to Garrity Blvd\*
    - Middleton Rd Rebuild, Karcher to Flamingo\*
  - **Reconnecting Communities Pilot Program (RCP)**
    - North Nampa Neighborhood Rail Crossing Study\*
    - Karcher at I84, Active Transportation Pathway Planning\*

- **Railroad Crossing Elimination Grant Program (RCEP)**
    - Robinson Blvd & Greenhurst Rd RRX Elimination\*
  - **Airport Terminal Program**
    - Airport Terminal Building\*
- In the last year, the City has received over \$15 million in state and federal transportation grant dollars and an additional \$25 million is still pending results. The projects awarded funding are:
    - Northside Blvd & Karcher Rd Intersection
    - 2nd St S Safety Improvements
    - Downtown Revitalization Master Plan
    - Canyon Street Ped Improvements
    - Northside Blvd Corridor Improvements, Karcher to Birch
    - North Nampa Revitalization Planning Grant
    - N 14th Ave Bridge at Indian Creek
    - Sherman Elementary Pedestrian Crossings
  - All programs with match funding required by the City are for future budget years and will be appropriately planned/budgeted if/when award(s) are received. Funding plans have preliminarily been identified through general budget and impact fees
  - Staff recommends continuing with application process for the projects identified in Exhibit A

**REQUEST:** Authorize (1) Public Works staff to submit applications in FY23 for grant funding for city transportation projects and Mayor to sign a letter of support/commitment for projects listed for inclusion within funding applications and (2) Authorize the commitment of matching funds if awarded.

**Item #6-5 – Authorize the following actions: (1) Public Works staff to submit applications in FY23 for grant funding for city transportation projects and Mayor to sign a letter of support/commitment for projects listed for inclusion within funding applications with intent to commit matching funds, if awarded, subject to approved appropriations.**

Crystal Craig, Transportation responded to Council’s questions on any matching funds.

**MOVED** by Bruner and **SECONDED** by Jangula to **Approve** the item. Mayor asked for a roll call vote with all Councilmembers present voting **YES**.

MOTION CARRIED

**Item #6-6 – Award bid and authorize Mayor to sign contract for the Pump Maintenance & Electrical Upgrades FY22 Project with Layne of Idaho in the amount of \$468,902.34.**

**MOVED** by Haverfield and **SECONDED** by Reynolds to **Approve** the item. Mayor asked for a roll call vote with all Councilmembers present voting **YES**.

MOTION CARRIED

**Item #6-7 – Award bid and authorize Mayor to sign contract for the Zone B Sewer Rehab FY23 project with Iron Horse Pipeline Services LLC in the amount of \$944,633.00.**

Jeff Barnes, Water responded to Council’s questions on performance and bid bonds as well as past contracts with this vendor.

**MOVED** by Rodriguez and **SECONDED** by Reynolds to **Approve** the item. Mayor asked for a roll call vote with all Councilmembers present voting **YES**.

MOTION CARRIED

**Item #6-8 – Authorize Mayor and Public Works Director to sign Task Order for attached Scope of Work with J-U-B Engineers, Inc. for Purdam Trunk Sewer Extension project design services in the amount of \$1,140,348 (T&M NTE).**

Jeff Barnes, Water presented the item to Council and referred to a revised Scope of Work that was provided to Council prior to the start of the meeting (and is attached at the end of the minutes). Mr. Barnes, as well as Caleb Laclair, Engineering and Doug Racine, Finance responded to Council’s questions.

**MOVED** by Bruner and **SECONDED** by Reynolds to **Approve** the item. Mayor asked for a roll call vote with all Councilmembers present voting **YES**.

MOTION CARRIED



January 31, 2024

Toni Tisdale  
COMPASS  
700 NE 2<sup>nd</sup> Street, Suite 200  
Meridian, ID 83642

RE: 2024 COMPASS Funding Application Phase II for Nampa, Idaho

Dear Ms. Tisdale,

The City of Nampa is committed to improving transportation safety for all Nampa residents. Please consider the following 2024 Phase II project applications for funding consideration:

- Airport Rd & N 39th St Intersection Improvements
- Franklin Blvd & Cherry Ln Intersection Improvements
- Garrity Blvd and N 39th St Intersection Improvements
- Garrity Blvd and Stamm Ln, WINCO Block Improvements
- Garrity Blvd Rail Overpass, Realignment, & Ped Improvements
- Garrity Side Path, Stamm Ln to Carnation
- Locust Ln & Happy Valley Rd Intersection Improvements
- Madison Rd & Ustick Rd Intersection Improvements
- Middleton Rd & Elijah Drain Rebuild, Karcher to Flamingo
- Midland and Marketplace Traffic and Safety Improvements
- Northside Blvd & Cherry Ln Intersection Improvements
- Northside Blvd & Ustick Rd Intersection Improvements
- Northside Blvd Widening, Birch Ln to Cherry Ln

Each of the projects will help to advance the transportation goals of our community. The city understands that a local match ranging from 7.34% or more of the project cost is required for selected projects. In addition to matching funds, the city's engineering division is committed to the successful completion of all awarded projects through dedicated staff that are experienced in managing grant funds and construction projects.

The city of Nampa has made great progress in implementing projects to improve transportation efficiency and safety. These projects will build upon this work.

Thank you for your consideration of these important applications. We thank you for your help. Please call me if you have any questions.

Sincerely,

Debbie Kling  
Mayor



**Your Safety • Your Mobility  
Your Economic Opportunity**

**IDAHO TRANSPORTATION DEPARTMENT**

P.O. Box 8028 • Boise, ID 83707-2028  
(208) 334-8300 • [itd.idaho.gov](http://itd.idaho.gov)

December 16, 2022

City of Nampa Public Works  
Attn: Crystal Craig, Director of Transportation  
500 12<sup>th</sup> Avenue South  
Nampa, ID 83651

RE: ITD Letter of Support for Nampa Projects and Funding Pursuits

Dear Mrs. Craig,

The Idaho Transportation Department (ITD) would like to express full support for the following projects as well as full support of Nampa seeking grant funding.

- Garrity Blvd and N 39th St Intersection Improvements
- Garrity Blvd and Stamm Ln, WINCO Block Improvements
- Garrity Side Path, Stamm Ln to Carnation
- Garrity Blvd Rail Overpass, Realignment, & Ped Improvements
- Garrity Blvd & N 39th St Area Airport & Museum Access Improvements
- I-84, SH-16 Interchange Southerly Connection
- SH-45 Realignment NEPA

It is understood that these projects are being submitted to COMPASS as a part of their call for funding applications and federal funding may be pursued as well. It is further understood that ITD is a jurisdictional partner and will be involved in the development of projects, however City of Nampa is the applicant, administrator, and responsible party in relation to these project pursuits.

These projects are mutually beneficial. Thank you for your continued partnership in transportation!

Best regards,

J. Caleb Lakey, P.E.  
District 3 Administrator  
Idaho Transportation Department

# **2025 COMPASS Funding Application Phase I**

## **FIRST REVIEW by Toni Tisdale:**

The cost is rather high for the an active transportation project. Multiple phases would make it easier to fund this project, but each segment must include usable termini. The concept is complete. This is beneficial to a federal project, as it could move into a funded year once ITD approves the concept. Missing current local match commitment letter.

Eligibility: STBG-LU, CRP-LU, Competitive Federal

---

# 2024 COMPASS Funding Application Phase II

*The next sets of questions pertain to PRIMARY PROJECT TYPES (Planning, Roadway, Active Transportation, and Public Transportation).*

*Please fill out ONLY the section that pertains to your project.*

**The four project categories are below:**

Definitions:

**Planning Only** - Projects for which the primary result is a study, document, or planning product. This would include any plan, study, data acquisition, Planning and Environmental Linkages (PEL) study, or other process that is eligible for federal funds, but does not directly result in capital or maintenance expenses. Applications seeking design funds for a project that fits into one of the other categories would fit into that category.

Examples: County Transportation Plan, Americans Disabilities Act (ADA) Transition Plan, Transportation System Management and Operations (TSMO) Plan, Freight Fluidity Study.

**Roadway** - Auto-oriented projects that improve, maintain, modify, or add vehicle travel lanes; modify roadway geometry or intersection design; add or modify intersection controls; and/or are used for roadway operations.

Examples: Added travel lanes, added turning lanes, roadway resurfacing, roadway realignments, intersection improvements, signal control modifications, Transportation System Management and Operations (TSMO), and ITS improvements.

**Active Transportation** - Active mode user-oriented projects that improve, maintain, modify, or add active mode facilities without extensive impact\* on the roadway.

Examples: New or improved pathways, bikeways, or sidewalks; improved bike or pedestrian crossings; minor operational changes benefiting pedestrians (e.g., leading pedestrian signals); traffic calming; addressing ADA compliance issues; and/or adding permanent active mode data collection devices

\*"Extensive impact" to the roadway would include a change in the number of vehicle-travel lanes, but would exclude a reduction in lane widths to accommodate a pathway, for example).

**Public Transportation** - Projects that improve, maintain, replace, modify, or add facilities, equipment, technologies, or capital supporting public transportation and/or vanpool services.

Examples: Improving bus stops, replacing vehicles and equipment, maintaining facilities, adopting improved technology, or addressing ADA compliance issues within public transportation facilities.

All project applications must include the following attachments (not counted in the page limit):

- ITD form 0414 – Sub-Awardee Reporting for the Federal Funding Accountability and Transparency Act
- ITD form 1150 – Project Cost Summary Sheet
- ITD form 2435 – Local Federal-Aid Project Request
- COMPASS Form FA100 – Federal Requirements
- Estimating Worksheet (must match form 1150 and 2435)
  - Be sure to update Phase I cost information if change occurred since the submittal of Phase I

# 2024 COMPASS Funding Application

## Phase II

### ACTIVE TRANSPORTATION PROJECT FOCUS

All applications must be submitted in Word format by email to [ssader@COMPASSidaho.org](mailto:ssader@COMPASSidaho.org). This phase of the application page limit is 8 pages. Refer to Scoring and Ranking Guide Resources for guidance and links (add link).

**Sponsor Name (agency):** [City of Nampa](#)

**Project Title:** [Garrity Blvd Side Path](#)

#### SAFETY

**Does the project address a known active transportation safety issue?** Explain and provide the data below:

**Number of fatalities** (active transportation related): 1

**Number of serious injuries** (active transportation related): 2

**Explain how the project addresses the causes of the fatalities and/or serious injuries:** The project will reconstruct the sidewalks, creating a landscape buffer between the roadway and the sidewalk. which will be constructed as a wider multi-use pathway to remove bicycles from the roadway. Improving safety for all users along the corridor

**Does the project improve safety for active transportation users?**

**Crash Modification Factor (CMF) most appropriate for this project:**

[Install sidewalk barrier](#)

**Expected percentage of crash reduction based on CMF and types of crashes included:** [CMF 0.33](#), [CRF\(%\) 67%](#)

#### ECONOMIC VITALITY

**Does the project address a gap in the active transportation network?**

- Addresses a gap identified in CIM 2050 Priority Corridors and Projects (High Priority)
- Addresses a gap identified in CIM 2050 Priority Pathways (Medium/Low Priority)
- Addresses a gap identified in Bike Walk COMPASS
- Does not address a gap.

Explain how this project addresses a gap:



**Does the project improve a facility in “fair” or “poor” condition?** (A facility is regarding pavement, bridge deck, bridge, pathway, sidewalk, etc.)

- Good
- Fair
- Poor
- N/A: New Segment

Explain, if necessary and provide method of data collection:

**Does the project provide an active mode alternative to a congested roadway segment as identified in the COMPASS Congestion Management Annual Report?**

- Runs parallel (within ¼ mile) of a “highly congested” and/or “unreliable” roadway segment
- Runs parallel (within ¼ mile) of a “moderately congested” roadway segment

Explain how the project provides an alternative to the roadway segment and how it provides or improves active transportation facilities or connections:

## CONVENIENCE

**Does the project improve active mode connectivity to public transportation?**

- Improves connectivity along a corridor with *current* public transportation service.
- Improves connectivity along a corridor with *planned* public transportation service.
- Not location along any current or planned public transportation corridor and does not directly support public transportation.

Explain:

**Does the project improve active mode connectivity to key destinations?**

Explain and provide a list of the regional activity centers and/or key destinations provided access and how far the project is from those destinations:

This project will directly improve access to the Nampa Municipal Airport and Warhawk Air Museum as well as several local businesses adjacent to the area. It provides direct northern connection to I-84 and the greater treasure valley. The project is close to commercial centers, hospital, education, and critical service providers. With a planned future complete streets connectivity from the Gateway Plaza/WINCO area, south along Garrity Blvd to Lakeview Park, Maple Grove Park, the Boys and Girls Club, and the Hispanic Cultural Center.

## QUALITY OF LIFE

**Does the project benefit an underserved area (as related to the COMPASS Equity Index)?**

- Yes
- No

If the answer is no, but will still provide benefits to an underserved area, explain how:

**Explain the benefit(s) the project will provide to an underserved area:** The project will provide active transportation users with safe, accessible connectivity to critical businesses and amenities in the area.

**Does the project address any environmental impacts (as listed in the COMPASS Environmental Review Map)?**

- Yes
- No

Please list the impacts identified on the Environmental Review Map and explain how the project will address the impacts:

If the COMPASS Environmental Review Map does not provide information for this project, provide supplemental documentation that shows the project addresses environmental impacts and provides references to where the information was obtained.

**Does the project address an existing Americans with Disabilities Act (ADA) compliance issue?**

- Yes
- No

Identify the issue and describe the improvement: **Existing sidewalk is deteriorating and is not ADA compliant at all access drives and crossings, which will be improved/corrected with this project**

**PROJECT READINESS**

**Is the project a priority to the sponsor agency? Yes**

COMPASS staff will request all priorities of applications submitted after the deadline.

**Does the partner agency provide match above the required minimum? Yes**

Project amounts and proposed match are provided in the Phase I application. If the amount of request or match proposed is different than in Phase I, please revise Phase I.

**Is the project ready for federal implementation?** (Mark all that apply)

- Pre-concept report complete or equivalent
- Preliminary design complete
- Environmental complete
- Final design complete
- Right-of-way plans complete (or not needed)
- Right-of-way acquired (or not needed)
- PS&E is ready

## **REQUIRED ATTACHMENTS**

All project applications must include the following attachments (not counted in the page limitation):

- ITD form 0414 – Sub-Awardee Reporting for the Federal Funding Accountability and Transparency Act
- ITD form 1150 – Project Cost Summary Sheet
- ITD form 2435 – Local Federal-Aid Project Request
- COMPASS Form FA100 – Federal Requirements
- Estimating Worksheet (must match form 1150 and 2435)
  - Be sure to update Phase I cost information if change occurred since the submittal of Phase I



**City of Nampa**  
**Public Works Business Item**

---

<b>TO:</b>	Mayor and Council
<b>FROM:</b>	Crystal Craig, Director of Transportation
<b>NUMBER:</b>	7-6
<b>DATE:</b>	December 4, 2023
<b>SUBJECT:</b>	<b>Action Item:</b> 1. Authorize Public Works staff to submit applications in FY24 for grant funding for City transportation projects; and 2. Authorize Mayor to sign a letter of support/commitment for projects listed for inclusion within funding applications.

---

**Background Summary:**

- Annually, the City competes for federal grant dollars to enhance transportation safety, add capital infrastructure, and help augment funding shortfalls. The City selects projects using the Transportation Master Plan, Bike and Pedestrian Master Plan and evaluating current safety and efficiency needs. Projects are prioritized by the planning group annually. The City is constantly updating its priority project list to take advantage of additional funding sources that come available
- Strategically selecting projects and competing for funding is a collaborative process. The grant planning team is made up of staff from the following City departments: Finance, Planning and Zoning, Parks, Streets, Economic Development, and Engineering. The group also coordinates with Idaho Transportation Department, Community Planning Association of Southwest Idaho (COMPASS) Regional Planning, Nampa Police, Nampa School District, Northwest Nazarene University and other stakeholders
- In the past several years, the City has received over \$30 million in state and federal transportation grant dollars. The following are an example of some grant projects completed or funded:
  - Middleton Road/Flamingo Avenue signalized intersection
  - Middleton Road/Smith Avenue signalized intersection
  - Middleton Road/Lone Star Road signalized intersection

- 12th Avenue HAWK Pedestrian Signals (at 11th Avenue S and Sherman Avenue)
- Signal safety and efficiency upgrades at eight (8) intersections
- Traffic safety improvements at eight (8) schools in Nampa
- Cherry Lane Road Rebuild (Franklin to 11th Avenue N)
- Cherry Lane Road Rebuild (11th Avenue N to Idaho Center Blvd)
- Stoddard City Pathway
- Grimes City Pathway
- Franklin Road/Industrial Improvements
- Franklin Blvd/Karcher Roundabout
- Greenhurst/Sunnybrook Drive Traffic Signal
- Northside Blvd & Karcher Rd Intersection
- 2nd St S Safety Improvements
- Downtown Revitalization Master Plan
- Canyon Street Ped Improvements
- Northside Blvd Corridor Improvements, Karcher to Birch
- North Nampa Revitalization Planning Grant
- N 14th Ave Bridge at Indian Creek
- Sherman Elementary Pedestrian Crossings

**Reason for Project:**

- The following grant programs are accepting applications for fiscal year 2024:
  - Local Highway Safety Improvement Program (LHSIP) for safety improvement projects at high accident locations
  - LHTAC Federal-Aid Bridge Program for repair and rehabilitation of poor/fair condition bridges
  - COMPASS Development and Implementation Grants to help identify, develop, and implement possible grant projects for future funding
  - Children Pedestrian Safety Program for pedestrian safety improvements to paths/sidewalks, connecting sidewalks/paths, ADA ramps, and pedestrian crossing facilities

- Transportation Alternative Program (TAP) to provide for variety of alternative transportation projects to address the needs of nonmotorized users
- Freight Grant to help identify public roads in an urbanized area providing access and connection to the primary highway freight system and the interstate with other important ports, public transportation facilities, or other intermodal freight facilities
- Rebuilding American Infrastructure with Sustainability and Equity (RAISE) discretionary grant program to help urban and rural communities move forward on projects that modernize roads, bridges, transit, rail, ports, and intermodal transportation and make our transportation systems safer, more accessible, more affordable, and more sustainable
- Rural Surface Transportation Grant supports projects to improve and expand the surface transportation infrastructure in rural areas to increase connectivity, improve the safety and reliability of the movement of people and freight, and generate regional economic growth and improve quality of life
- Infrastructure For Rebuilding America (INFRA) for multimodal freight and highway projects of national or regional significance to improve the safety, efficiency, and reliability of the movement of freight and people in and across rural and urban areas
- FAA Airport Improvement Program (AIP) for repair/replacement of terminal building
- Staff requests the following projects be submitted for grant funding in fiscal year 2024 (see Exhibit A for detailed project descriptions):
  - Compass Development and Implementation Grants
    - Airport Rd & N 39th St Intersection Improvements
    - Downtown Active Transportation Improvements
    - Franklin Blvd & Cherry Ln Intersection Improvements
    - Franklin Blvd River Crossing
    - Garrity Blvd and N 39th St Intersection Improvements
    - Garrity Blvd & N 39th St Area Airport & Museum Access Improvements
    - Garrity Blvd and Stamm Ln, WINCO Block Improvements
    - Garrity Side Path, Stamm Ln to Carnation

- Locust Ln & Happy Valley Rd Intersection Improvements
- Madison Rd & Ustick Rd Intersection Improvements
- Middleton Rd & Elijah Drain Rebuild, Karcher to Flamingo
- Midland and Marketplace Traffic and Safety Improvements
- Northside Blvd & Cherry Ln Intersection Improvements
- Northside Blvd & Ustick Rd Intersection Improvements
- Northside Blvd Widening, Birch Ln to Cherry Ln
- Robinson Blvd & Greenhurst Rd RRX Elimination
- Children Pedestrian Safety Program
  - Safe Routes to School Sidewalk Gap fill project and/or school crossing Rectangular Rapid Flashing Beacon (RRFB) installation project (multiple locations in vicinity schools)
- Local Highway Safety Improvement Program
  - Garrity Blvd and Stamm Ln, WINCO Block Improvements
  - Karcher Bypass & Marketplace Road Safety Audit (RSA)
- Transportation Alternative Program
  - Garrity Boulevard Side Path
- Freight Grant
  - Northside Blvd Corridor Improvements
- Rebuilding American Infrastructure with Sustainability and Equity (RAISE)
  - Garrity Blvd & N 39th St Area Airport & Museum Access Improvements
  - Downtown Active Transportation Improvements coordinating with the Downtown Master Plan
- Rural Surface Transportation Grant (RSTP)/Infrastructure For Rebuilding America (INFRA)
  - Garrity Blvd & N 39th St Area Airport & Museum Access Improvements
  - Franklin Blvd Corridor, I-84 to Cherry
- Airport Improvement Program
  - Nampa Municipal Airport New Terminal Building

**Funding/Project Costs:**

- Grant funding allocations and commitments are for future years and thereby are not included in the currently approved budget

- If the project is awarded grant funding, local contribution/match to be funded by the city will be budgeted in the appropriate year that it is needed, and it will be brought back for Council to authorize the scope of work
- Project Costs, Funding to be Requested, and applicable Match/Local Contribution requirements can be found in the table on Exhibit A - FY24 Transportation Grant Pursuits Summary

**Staff Recommendation:**

- Staff recommends continuing with application process for all projects as identified in Exhibit A

**Attachments:**

Exhibit A - FY24 Transportation Grant Pursuits Summary



FY24 Transportation Grant Pursuits Summary:

	Project Title	Esrimated Total Project Cost	Program	Requested Funding	Min Required Local Contribution/Match	%
Design+Construction	Airport Terminal Building	\$ 13,500,000.00	ATP	\$ 7,185,000.00	\$ 6,315,000.00	46.8%
Design+Construction	Franklin Blvd Corridor Improvements, I-84 to Cherry	\$ 14,500,000.00	RSTP	\$ 11,600,000.00	\$ 2,900,000.00	20%
Design+Construction	<b>Indian Creek Stabalization and Pathway Rehabilitation</b>	\$ 3,000,000.00	BOR/BRIC	\$ 2,400,000.00	\$ 600,000.00	20%
Design+Construction	Intelligent Transportation Systems Implementation Project	\$ 4,500,000.00	ATTAIN	\$ 3,600,000.00	\$ 900,000.00	20%
Design+Construction	Airport Rd & N 39th St Intersection Improvements	\$ 4,000,000.00	COMPASS	\$ 3,706,400.00	\$ 293,600.00	7.34%
Design+Construction	Franklin Blvd & Cherry Ln Intersection Improvements	\$ 4,000,000.00	COMPASS	\$ 3,706,400.00	\$ 293,600.00	7.34%
Design+Construction	Garrity Blvd and N 39th St Intersection Improvements	\$ 4,000,000.00	COMPASS	\$ 3,706,400.00	\$ 293,600.00	7.34%
Design+Construction	Garrity Blvd and Stamm Ln, WINCO Block Improvements	\$ 6,158,940.00	COMPASS/LHSIP	\$ 5,706,873.80	\$ 452,066.20	7.34%
Design+Construction	Garrity Side Path, Stamm Ln to Carnation	\$ 2,225,000.00	COMPASS/TAP	\$ 2,061,685.00	\$ 163,315.00	7.34%
Design+Construction	Locust Ln & Happy Valley Rd Intersection Improvements	\$ 4,000,000.00	COMPASS	\$ 3,706,400.00	\$ 293,600.00	7.34%
Design+Construction	Madison Rd & Ustick Rd Intersection Improvements	\$ 4,000,000.00	COMPASS	\$ 3,706,400.00	\$ 293,600.00	7.34%
Design+Construction	Middleton Rd & Elijah Drain Rebuild, Karcher to Flamingo	\$ 3,600,000.00	COMPASS/LHTAC/BIP	\$ 3,335,760.00	\$ 720,000.00	20%
Design+Construction	Midland and Marketplace Traffic and Safety Improvements	\$ 3,840,000.00	COMPASS	\$ 3,558,144.00	\$ 281,856.00	7.34%
Design+Construction	Northside Blvd & Cherry Ln Intersection Improvements	\$ 4,000,000.00	COMPASS	\$ 3,706,400.00	\$ 293,600.00	7.34%
Design+Construction	Northside Blvd & Ustick Rd Intersection Improvements	\$ 4,000,000.00	COMPASS	\$ 3,706,400.00	\$ 293,600.00	7.34%
Design+Construction	Northside Blvd Widening, Birch Ln to Cherry Ln	\$ 3,000,000.00	COMPASS/Freight	\$ 2,779,800.00	\$ 220,200.00	7.34%
Design+Construction	Robinson Blvd & Greenhurst Rd RRX Elimination	\$ 10,000,000.00	COMPASS/RCEP	\$ 9,266,000.00	\$ 2,000,000.00	20%
Design+Construction	<b>Downtown Active Transportation Improvements</b>	\$ 3,500,000.00	COMPASS/RAISE	\$ 2,625,000.00	\$ 875,000.00	25%
Design+Construction	Safe Routes to School Sidewalk Gap fill project and/or school crossing RRFB installation project (multiple locations in vicinity schools)	\$ 250,000.00	Child Pedestrian Safety Program	\$ 250,000.00	\$ -	0%
Planning & Prototyping	Intelligent Transportation Systems Planning Project	\$ 2,000,000.00	SMART	\$ 2,000,000.00	\$ -	0%
Planning, design to 30%	Franklin Blvd Rebuild, Industrial to Garrity Blvd	\$ 850,000.00	BIP	\$ 850,000.00	\$ -	0%
Planning, design to 30%	Active Transportation Pathway Planning	\$ 2,000,000.00	RCP	\$ 1,600,000.00	\$ 400,000.00	20%
Planning study	North Nampa Neighborhood Rail Crossing Study	\$ 2,000,000.00	RCP	\$ 1,600,000.00	\$ 400,000.00	20%
Planning study	I-84SH-16 Interchange Southerly Connection	\$ 1,500,000.00	COMPASS	\$ 1,389,900.00	\$ 110,100.00	7.34%
Planning Study	<b>Karcher Bypass and Marketpace RSA (Road Safety Audit)</b>	\$ 110,000.00	LHSIP	\$ 101,926.00	\$ 8,074.00	7.34%
Planning, pre-concept report	Garrity Blvd & N 39th St Area Airport & Museum Access Improvements	\$ 50,000.00	COMPASS PD	\$ 50,000.00	\$ -	0%
Planning, pre-concept report	<b>Franklin Blvd River Crossing</b>	\$ 50,000.00	COMPASS PD	\$ 50,000.00	\$ -	0%

\* note, most applications have received prior approval for pursuit, only those in **BOLD** are new project pursuits

- 7-4. Action Item: Authorize Patrick Sullivan, Building Safety Director, to submit a letter of public comment regarding the Idaho Division of Professional and Occupation Licenses 2024 legislative priorities for School Safety Statute.

Patrick Sullivan, Building Safety presented the item to Council.

**MOVED** by Bruner and **SECONDED** by Reynolds to Approve the item.

**RESULT: Passed [5 TO 0]**

**AYES:** Bruner, Haverfield, Jangula, Reynolds, Rodriguez

**NOES:** None

**ABSTAIN:** None

- 7-5. Action Item: Adopt the 2023 Nampa Municipal Airport Minimum Design and Development Standards. (Approved by City Attorney Joe Borton)

**MOVED** by Jangula and **SECONDED** by Haverfield to Approve the item.

**RESULT: Passed [5 TO 0]**

**AYES:** Bruner, Haverfield, Jangula, Reynolds, Rodriguez

**NOES:** None

**ABSTAIN:** None

- 7-6. Action Item: (1) Authorize Public Works staff to submit applications in FY24 for grant funding for City transportation projects; and (2) Authorize Mayor to sign a letter of support/commitment for projects listed for inclusion within funding applications.

**MOVED** by Reynolds and **SECONDED** by Bruner to Approve the item.

**RESULT: Passed [5 TO 0]**

**AYES:** Bruner, Haverfield, Jangula, Reynolds, Rodriguez

**NOES:** None

**ABSTAIN:** None

- 7-7. Action Item: 1st reading of Street Naming Ordinance for South Little Acorn Lane. (Standard Street Naming Ordinance Approved by Legal)

Mayor presented the request to pass the ordinance under suspension of rules.

The Clerk read into the record the following ordinance:

AN ORDINANCE OF THE CITY OF NAMPA, IDAHO, NAMING A PRIVATE STREET SOUTH LITTLE ACORN LANE.

## UNDERSTANDING OF REQUIREMENTS FOR FEDERAL AID RECIPIENTS

Applicants should keep in mind that receipt of federal funds requires compliance with the following federal and state requirements (Note - this is not an exhaustive list):

1. **Equal Opportunity** requirements (non-discrimination) for construction contracts in excess of \$10,000 apply to a wide range of project elements, including contracting opportunities. A non-discrimination agreement must be signed as part of the award process, and records must be kept to show compliance. Disadvantaged Business Enterprise (DBE) requirements might apply.
2. Minimum wage requirements (**Davis-Bacon Act**) and anti-kickback requirements (**Copeland Act**) for construction contracts in excess of \$2,000, records must be kept to show compliance.
3. No use of federal funds for lobbying, for construction contracts in excess of \$100,000.
4. National Environmental Policy Act (**NEPA**).
  - a. The National Environmental Policy Act requires federal actions (including local transportation projects receiving federal aid) to be evaluated for potential impacts to the environment. Idaho Transportation Department (ITD) and the FHWA jointly conduct this review.
    - i. For major actions that significantly affect the quality of the human environment, an Environmental Impact Statement (EIS) must be prepared. This is a lengthy (and expensive) process that requires consideration of alternatives, analysis of impacts, and compliance with a series of public notice and comment periods.
    - ii. For projects in which the significance of the environmental impact is uncertain, an Environmental Assessment (EA) must be prepared. This document is more limited in scope than an EIS, and the procedure is not as lengthy. If it is determined, through the EA process, that there will not be significant impacts, a Finding of No Significant Impact (FONSI) is issued. If it is determined that there will be significant impacts, an EIS must be prepared.
    - iii. Most federal aid projects qualify for a "categorical exclusion," meaning that the project will not have a significant effect on the human environment. For these projects, neither an EIS nor an EA need be prepared. Federal regulations have identified several project types that typically receive a categorical exclusion (such as installation of utilities along a road; construction of bicycle and pedestrian paths; landscaping; installation of fences, signs, pavement markings and traffic signals, where no substantial land acquisition or traffic disruption would occur; alterations to facilities to make them accessible to elderly and handicapped persons; and other types of projects). Even though a proposed project might fall within an exclusion category, applicants must obtain clearance from ITD.
    - iv. Contact District Environmental Staff (listed at <http://itd.idaho.gov/enviro/District.Staff.htm>) for assistance with navigating the environmental review process.

5. Compliance with audit requirements:
  - a. An entity expending \$500,000 or more in a year in combined Federal awards (including any funds received from Federal sources outside ITD: US federal contracts, subcontracts, loans, grants, subgrants, and/or cooperative agreements) requires an A-133 Single Audit or program-specific audit each fiscal year.
  - b. An entity whose annual budget (from all sources) exceeds \$250,000 and expends any amount in a year in Federal awards are required to have a full and complete audit of financial statements each fiscal year.
  - c. An entity whose annual budget (from all sources) exceeds \$100,000 but does not exceed \$250,000 and expends any amount in a year of Federal awards has a minimum requirement of a financial statements audit on a biennial basis. Biennial audits shall include an audit of each fiscal year since the previous audit.
  - d. An entity whose annual budget (from all sources) exceeds \$50,000 but does not exceed \$100,000 and expends any amount in a year of Federal awards has a minimum requirement of a financial statements review on a biennial basis. Biennial review shall include a review of each fiscal year since the previous review.
  - e. An entity whose annual budget (from all sources) does not exceed \$50,000 and expends any amount in a year of Federal awards has a minimum requirement of a financial statements review by ITD on a biennial basis. Biennial ITD reviews shall include a review of each fiscal year since the previous review.
6. Compliance with **Americans with Disabilities Act** requirements. This includes a compliance Self-Evaluation, and for agencies with 50 or more employees, an ADA Transition Plan. Transition Plans identify physical obstacles to accessibility, describe methods to make facilities accessible, specify a schedule for completion, identify a responsible official, estimate the cost of each modification, and record completion dates.
7. Compliance with U.S. Office of Management and Budget (OMB) circulars on allowable costs, as follows:

<b>For the costs of a:</b>	<b>Use the principles in:</b>
State, Local or Indian Tribal Government	2 CFR 225
Private, nonprofit organization other than an (1) institution of higher education, (2) hospital, or (3) organization named in 2 CFR 230 as not subject to that circular	2 CFR 230
Educational institution	2 CFR 220
For-profit organization other than a hospital and an organization named in 2 CFR 230 as not subject to that circular	48 CFR Part 31, Contract Cost Principles and Procedures, or uniform cost accounting standards that comply with cost principles acceptable to the Federal agency.

8. Compliance with Federal Transit Administration, ITD, or Valley Regional Transit grant administration team reimbursement requirements. In most cases, recipients must request reimbursement of an expense within 60 days or the expense will not be reimbursed. ITD has up to 30 days to issue the reimbursement.
9. Compliance with minimum liability insurance requirements. Contractors must have comprehensive public and general liability insurance of at least \$500,000.00 per occurrence, and \$1,000,000.00 aggregate.

I, Crystal Craig, from City of Nampa (agency) have read the information above and understand the intent, and realize there are many other federal requirements to follow if this project is funded with federal funds. The information above is merely a summary of federal requirements for a federal-aid project. This project is proposed considering the federal requirements above.

Project Name: Garrity Side Path

Signed: Crystal Craig

Dated: 1-6-2023



# Sub-Awardee Reporting For The Federal Funding Accountability and Transparency Act (FFATA)

As required by the Federal Funding Accountability and Transparency Act ("Transparency Act" or "FFATA" per P.L. 109-282, as amended by section 6202(a) of P.L. 110-252; note 31 U.S.C. 6101), information on the first-tier sub-awards related to Federal contracts and grants, and the executive compensation of awardees and sub-awardees must be made publicly available beginning October 1, 2010. Federal agencies and prime awardees will report to ensure disclosure of Federal contract and grant sub-award and executive compensation data<sup>1</sup>.

The following information must be reported for prime awardees and sub-awardees<sup>2</sup>:

Sub-Awardee DUNS <sup>3</sup> 072959430 (UEI R6QNKZMEAHT4)		Sub-Awardee Name City of Nampa	
Address 411 3 <sup>rd</sup> St N.	City Nampa	State ID	Zip Code 83651

Names and total compensation of the five most highly compensated officers of the entity must be listed if:

- the entity in the preceding fiscal year received 80 percent or more of its annual gross and revenues in Federal awards; and
- the entity in the preceding fiscal year received \$25,000,000 or more in annual gross revenues from Federal awards; and
- the public does not have access to this information about the compensation of the senior executives of the entity through periodic reports filed under section 13(a) or 15(d) of the Securities Exchange Act of 1934 (15 U.S.C. §§ 78m(a), 78o(d)) or section 6104 of the Internal Revenue Code of 1986. See FFATA § 2(b)(1).

Name	Total Compensation <sup>4</sup>
1. n/a	
2.	
3.	
4.	
5.	
Explanation for exemption from listing above	

### Definitions and Authority

1. From Executive Office of the President, Office of Management and Budget, memorandum dated August 27, 2010.
2. A sub-awardee is a recipient of a sub-award. I.E., where ITD loses programmatic control or resident oversight; functioning only as a trustee of an obligation.
3. Unique identifier used is the sub-awardee's Dun & Bradstreet (D&B) DUNS Number. See OMB M-09-19 at 11.
4. "Total compensation" means the cash and noncash dollar value earned by the executives during the sub-recipient's past fiscal year of the following (for more information see 17 CFR 229.402(c)(2)): (i). Salary and bonus. (ii). Awards of stock, stock options, and stock appreciation rights. Use the dollar amount recognized for financial statement reporting purposes with respect to the fiscal year in accordance with FAS 123R. (iii). Earnings for services under non-equity incentive plans. Does not include group life, health, hospitalization or medical reimbursement plans that do not discriminate in favor of executives, and are available generally to all salaried employees. (iv). Change in pension value. This is the change in present value of defined benefit and actuarial pension plans. (v). Above-market earnings on deferred compensation which are not tax qualified. (vi). Other compensation. For example, severance, termination payments, value of life insurance paid on behalf of the employee, perquisites or property if the value for the executive exceeds \$10,000.

Completed By (Sub-Awardee's Printed Name) Lauren Locklear	Title Grant Writer	FFY 23
Signature 		Date 1.18.23



# Project Cost Summary Sheet

ITD 1150 (Rev. 06-17)  
itd.idaho.gov

Round Estimates to Nearest \$1,000

Key Number	Project Number	Date	
		1/19/2023	
Location			District
Garrity Blvd, Stamm Ln to Carnation Dr, Nampa			3
Segment Code	Begin Mile Post	End Mile Post	Length in Miles
2040	60.18	61.39	1.21

	Previous ITD 1150	Initial or Revise To
1a. Preliminary Engineering (PE)		\$109,000
1b. Preliminary Engineering by Consultant (PEC)		\$362,000
2. Right-of-Way: Number of Parcels                      Number of Relocations		
3. Utility Adjustments: <input type="checkbox"/> Work <input type="checkbox"/> Materials <input type="checkbox"/> By State <input type="checkbox"/> By Others		
4. Earthwork		\$50,000
5. Drainage and Minor Structures		
6. Pavement and Base		\$400,000
7. Railroad Crossing:		
Grade/Separation Structure _____		
At-Grade Signals <input type="checkbox"/> Yes <input type="checkbox"/> No		
8. Bridges/Grade Separation Structures:		
<input type="checkbox"/> New Structure      Length/Width _____		
Location _____		
<input type="checkbox"/> Repair/Widening/Rehabilitation      Length/Width _____		
Location _____		
9. Traffic Items (Delineators, Signing, Channelization, Lighting, and Signals)		\$182,000
10. Temporary Traffic Control (Sign, Pavement Markings, Flagging, and Traffic Separation)		\$15,000
11. Detours		
12. Landscaping		\$835,000
13. Mitigation Measures		\$10,000
14. Other Items (Roadside Development, Guardrail, Fencing, Sidewalks, Curb and Gutter, C.S.S. Items)		\$197,000
15. Cost of Constructions (Items 3 through 14)		\$1,689,000
16. Mobilization    10 % of Item 15		\$169,000
17. Construction Engineer and Contingencies                      55.4 % of Items 15 and 16		\$1,029,000
18. Total Construction Cost (15 + 16 + 17)		\$2,887,000
19. Total Project Cost ( 1 + 2 + 18)		\$3,358,000
20. Project Cost Per Mile	\$1,000	\$2,775,000
Prepared By:		
Lauren Locklear		

# Local Federal-Aid Project Request



## Instructions

- Under Character of Proposed Work, mark appropriate boxes when work includes Bridge Approaches in addition to a Bridge.
- Attach a Vicinity Map showing the extent of the project limits.
- Attach an ITD 1150, Project Cost Summary Sheet.
- Signature of an appropriate local official is the only kind recognized.

**Note:** In Applying for a Federal-Aid Project, You are Agreeing to Follow all of the Federal Requirements Which Can Add Substantial Time and Costs to the Development of the Project.

Sponsor (City, County, Highway District, State/Federal Agency) City of Nampa			Date 1/19/23
Project Title (Name of Street or Road) Garrity Side Path	F.A. Route Number	Project Length 1.21	Bridge Length

Project Limits (Local Landmarks at Each End of the Project)  
beginning, 60.18; ending, 61.39

**Character of Proposed Work (Mark Appropriate Items)**

<input checked="" type="checkbox"/> Excavation	<input checked="" type="checkbox"/> Bicycle Facilities	<input type="checkbox"/> Utilities	<input checked="" type="checkbox"/> Sidewalk
<input type="checkbox"/> Drainage	<input checked="" type="checkbox"/> Traffic Control	<input checked="" type="checkbox"/> Landscaping	<input type="checkbox"/> Seal Coat
<input checked="" type="checkbox"/> Base	<input type="checkbox"/> Bridge(s)	<input type="checkbox"/> Guardrail	<input type="checkbox"/> _____
<input type="checkbox"/> Bit. Surface	<input type="checkbox"/> Curb & Gutter	<input checked="" type="checkbox"/> Lighting	

**Estimated Costs (Attach ITD 1150, Project Cost Summary Sheet)**

Preliminary Engineering (ITD 1150, Line 1)	\$ 471,000
Right-of-Way (ITD 1150, Line 2)	\$ 0
Construction (ITD 1150, Line 18)	\$ 2,887,000

Preliminary Engineering By:  Sponsor Forces     Consultant

**Checklist (Provide Names, Locations, and Type of Facilities)**

Railroad Crossing	Garrity RRX
Within 2 miles of an Airport	Nampa Municipal Airport
Parks (City, County, State or Federal)	Lakeview Park, Stampede, Rodeo, Maple Grove,
Environmentally Sensitive Areas	n/a
Federal Lands (Indian, BLM, etc.)	n/a
Historical Sites	n/a
Schools	Snake River Elm, Boys & Girls Club
Other	St Alphonsus, Nampa Gateway Center, Julopy Jungle

Additional Right-of-Way Required:  None     Minor (1-3 Parcels)     Extensive (4 or More Parcels)

Will any Person or Business be Displaced:     Yes     No     Possibly

Standards	Existing	Proposed	Standards	Existing	Proposed
Number of Lanes	n/a	n/a	Roadway Width (Shoulder to Shoulder)	n/a ft	n/a ft
Pavement Type	AC	AC	Right-of-Way Width	75-110 ft	75-110 ft

Sponsor's Signature Lauren Locklear	Title Grant Writer
--	-----------------------

**Additional Information to be Furnished by the District**

Functional Classification	Terrain Type	20	ADT/DHV
---------------------------	--------------	----	---------



# Project Estimating Worksheet

For Large Construction Projects

Proposed Funding Match Rates	<b>Local Rate</b>	<b>Federal Rate</b>
	7.34%	92.66%

Enter proposed match rate (currently assumed at required rate, but could be higher), updates made below automatically. Change the rate to 100% below if agency plans to cover the cost of a phase with local funds - such as design costs, utilities, or right-of-way costs.

Infrastructure Project (more than \$500,000)			Local Portion		Federal Portion		
Phase Code	Description (include amounts for federal-aid items only)	Percentages	Project Totals	Proposed Local Match Percentage	Local Cash Match	Proposed Federal Percentage	Federal Amount Requested
CN	<b>Preliminary Construction Estimate (PCE)</b> <i>(Enter the estimated cost of construction only)</i>		\$ 1,858,000	7.34%	\$136,377	92.66%	\$1,721,623
CN	<b>Construction Contingency</b> (Overruns, change orders, etc.) <i>(30% of PCE)</i>	30%	\$ 557,400	7.34%	\$40,913	92.66%	\$516,487
CE	<b>Construction Engineering (ITD)</b> <i>(standard rate: 0.5% of PCE + contingency)</i>	0.50%	\$ 12,077	7.34%	\$886	92.66%	\$11,191
CC	<b>Construction Engineering (Consultant)</b> <i>(standard 15% of PCE + contingency for roadway - if project is a bridge, increase to 20%. If project includes complexities, increase up to 32%)</i>	15%	\$ 362,310	7.34%	\$26,594	92.66%	\$335,716
CL	<b>Construction Engineering (LHTAC)</b> <i>(standard rate: 4% of PCE + contingency)</i>	4.00%	\$ 96,616	7.34%	\$7,092	92.66%	\$89,524
UT	<b>Utilities</b> <i>(amount for moving/improving utilities)</i>			7.34%	\$0	92.66%	\$0
RW	<b>Right-of-Way</b> <i>(ITD assistance with land acquisition participation.) (This number depends on the number of parcels involved in the project. For up to 10 parcels, \$5,000. 10 to 20 parcels, \$10,000. More than 20 parcels, contact COMPASS staff.)</i>			7.34%	\$0	92.66%	\$0
LP	<b>Land Purchase</b> <i>(estimated amount for land purchase)</i>			7.34%	\$0	92.66%	\$0
PE	<b>Preliminary Engineering (ITD)</b> <i>(standard rate: 0.5% of PCE + contingency)</i>	0.50%	\$ 12,077	7.34%	\$886	92.66%	\$11,191
PC	<b>Preliminary Engineering (Consultant)</b> <i>(standard 15% of PCE + contingency for roadway - if project is a bridge, increase to 20%. If project includes complexities, increase up to 25%)</i>	15%	\$ 362,310	7.34%	\$26,594	92.66%	\$335,716
PL	<b>Preliminary Engineering (LHTAC)</b> <i>(standard rate: 4% of PCE + contingency)</i>	4.00%	\$ 96,616	7.34%	\$7,092	92.66%	\$89,524

<b>Total Project Estimate</b>	<b>Total Local Portion</b>	<b>Total Federal Portion</b>
<b>\$3,357,406</b>	<b>\$246,434</b>	<b>\$3,110,972</b>

Construction  
Right-of-Way  
Design

Did you remember to include Davis Bacon wages and consideration of all federal requirements?