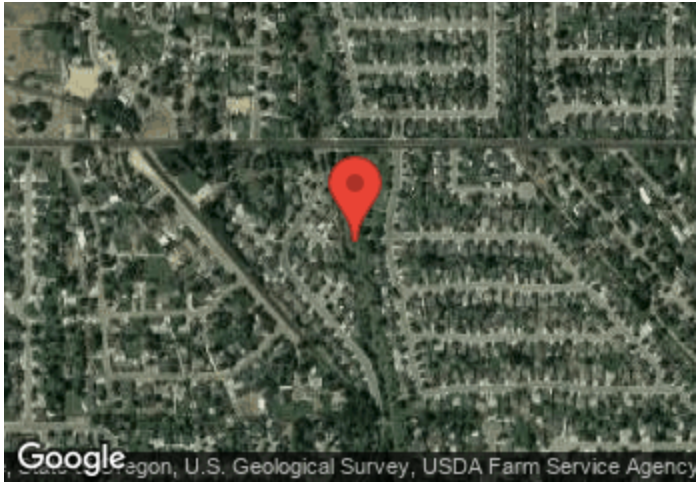


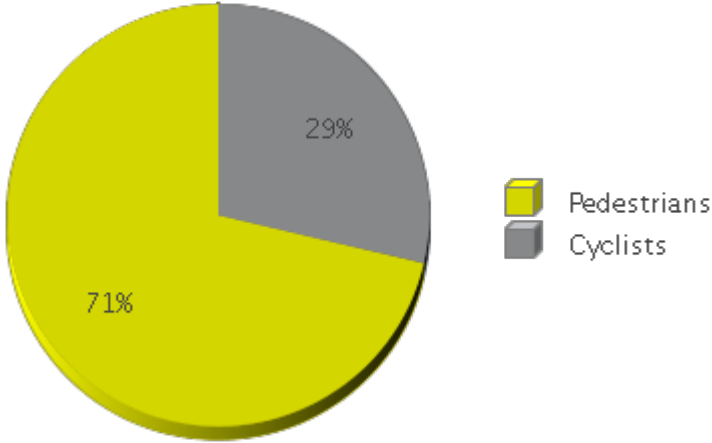
# Nampa - Stoddard Pathway

Period Analyzed: Monday, January 01, 2018 to Monday, December 31, 2018



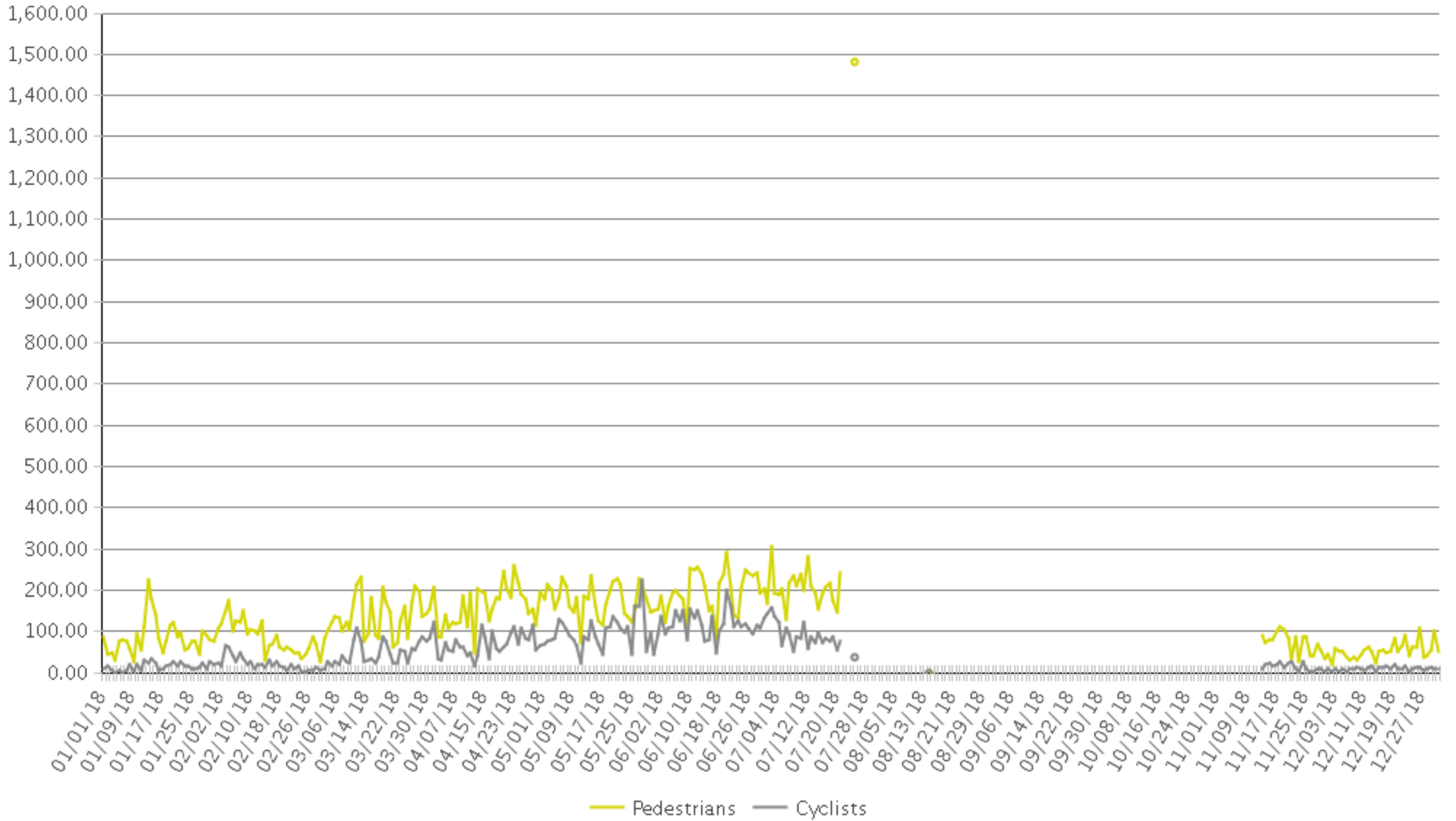
	Total Traffic for the Analyzed Period	Daily Average	Busiest Day of the Week	Busiest Month of the Year	Distribution	
					IN	OUT
Pedestrians	34,189	135	Wednesday	June 18: 5,900	55	45
Cyclists	13,735	54	Saturday	June 18: 3,558	51	49

IN: South  
OUT: North



# Nampa - Stoddard Pathway

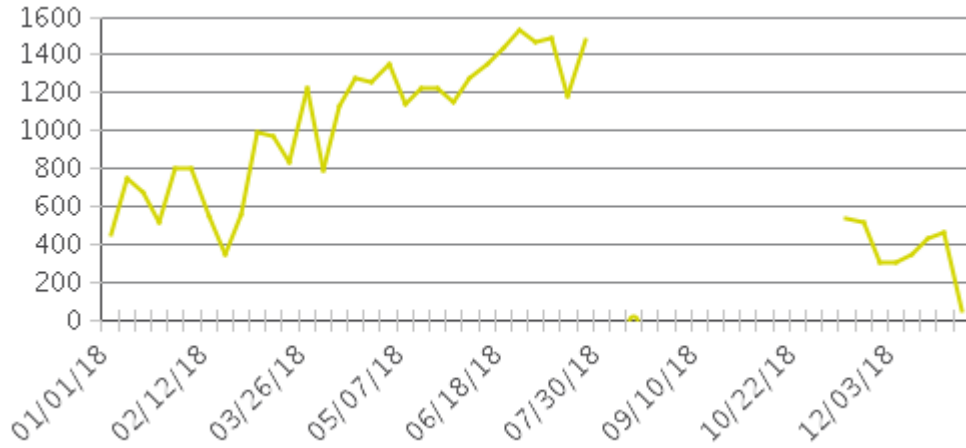
Period Analyzed: Monday, January 01, 2018 to Monday, December 31, 2018



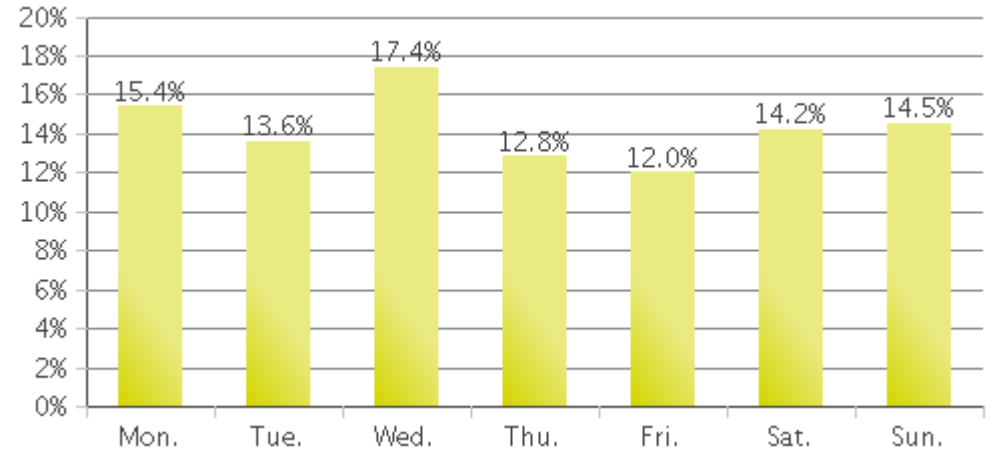
# Nampa - Stoddard Pathway (Pedestrians)

Period Analyzed: Monday, January 01, 2018 to Monday, December 31, 2018

### Weekly Traffic



### Weekly Profile



### Hourly Profile during Weekdays



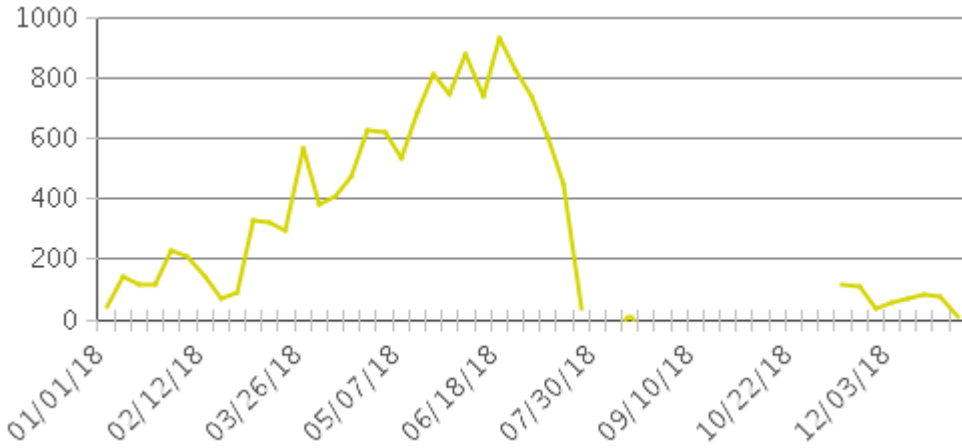
### Hourly Profile during the Weekend



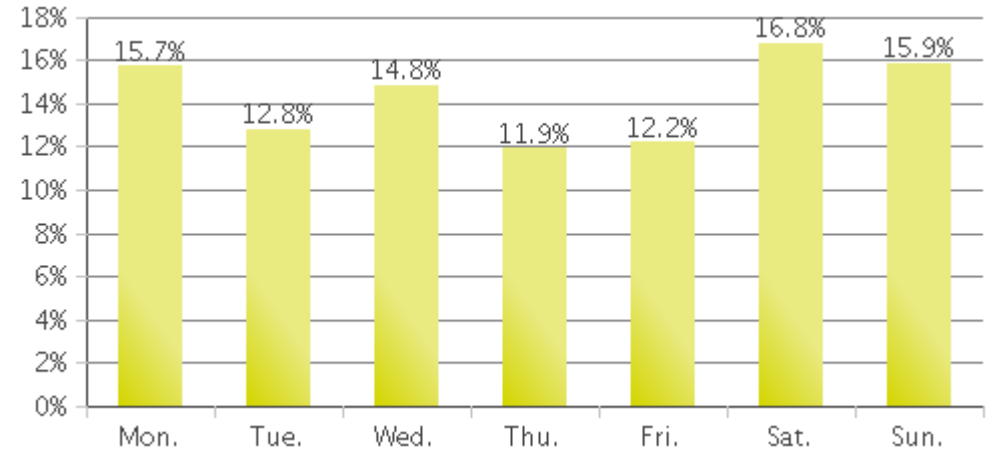
# Nampa - Stoddard Pathway (Cyclists)

Period Analyzed: Monday, January 01, 2018 to Monday, December 31, 2018

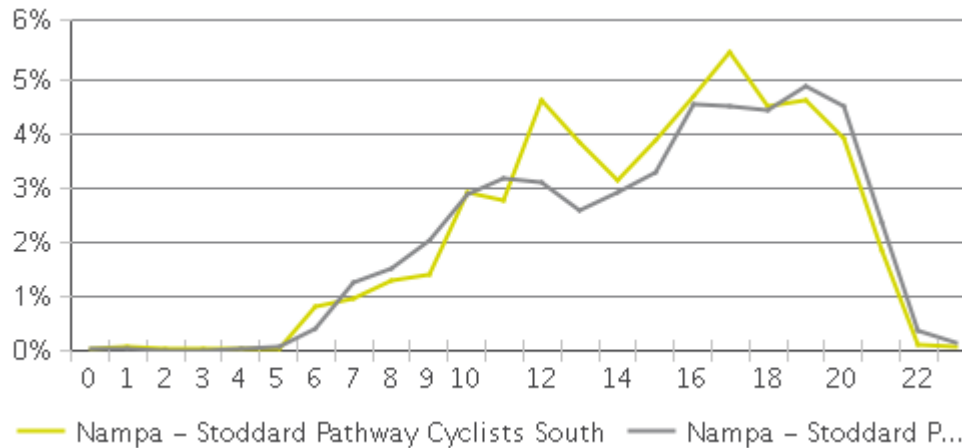
### Weekly Traffic



### Weekly Profile



### Hourly Profile during Weekdays



### Hourly Profile during the Weekend

