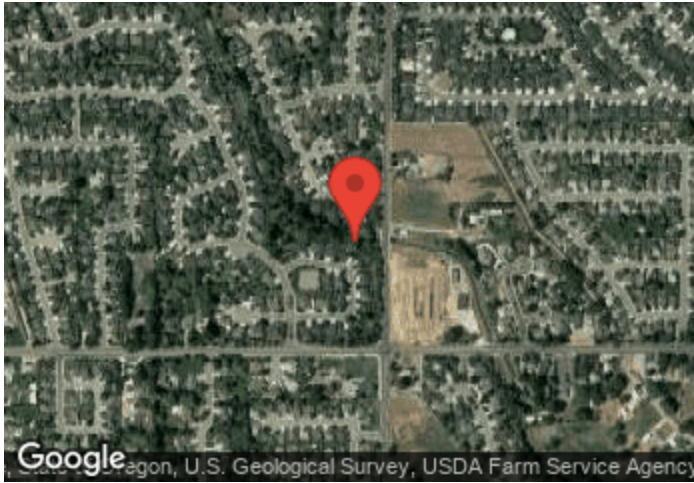


Nampa - Wilson Pathway

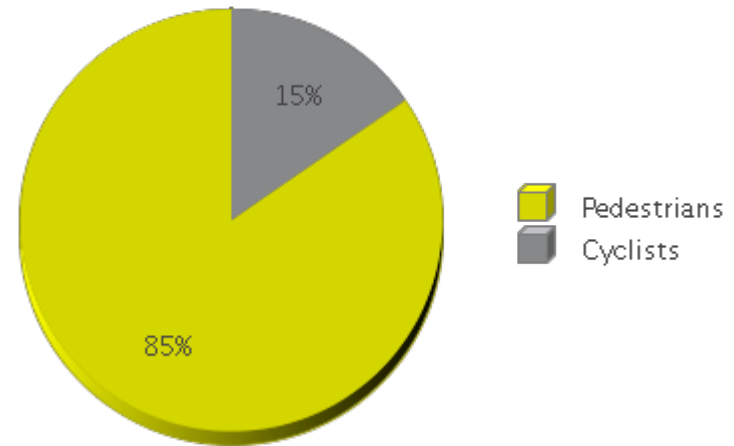
Period Analyzed: Monday, January 01, 2018 to Monday, December 31, 2018



	Total Traffic for the Analyzed Period	Daily Average	Busiest Day of the Week	Busiest Month of the Year	Distribution	
					IN	OUT
Pedestrians	80,467	226	Monday	June 18: 10,261	53	47
Cyclists	14,638	41	Sunday	June 18: 2,591	50	50

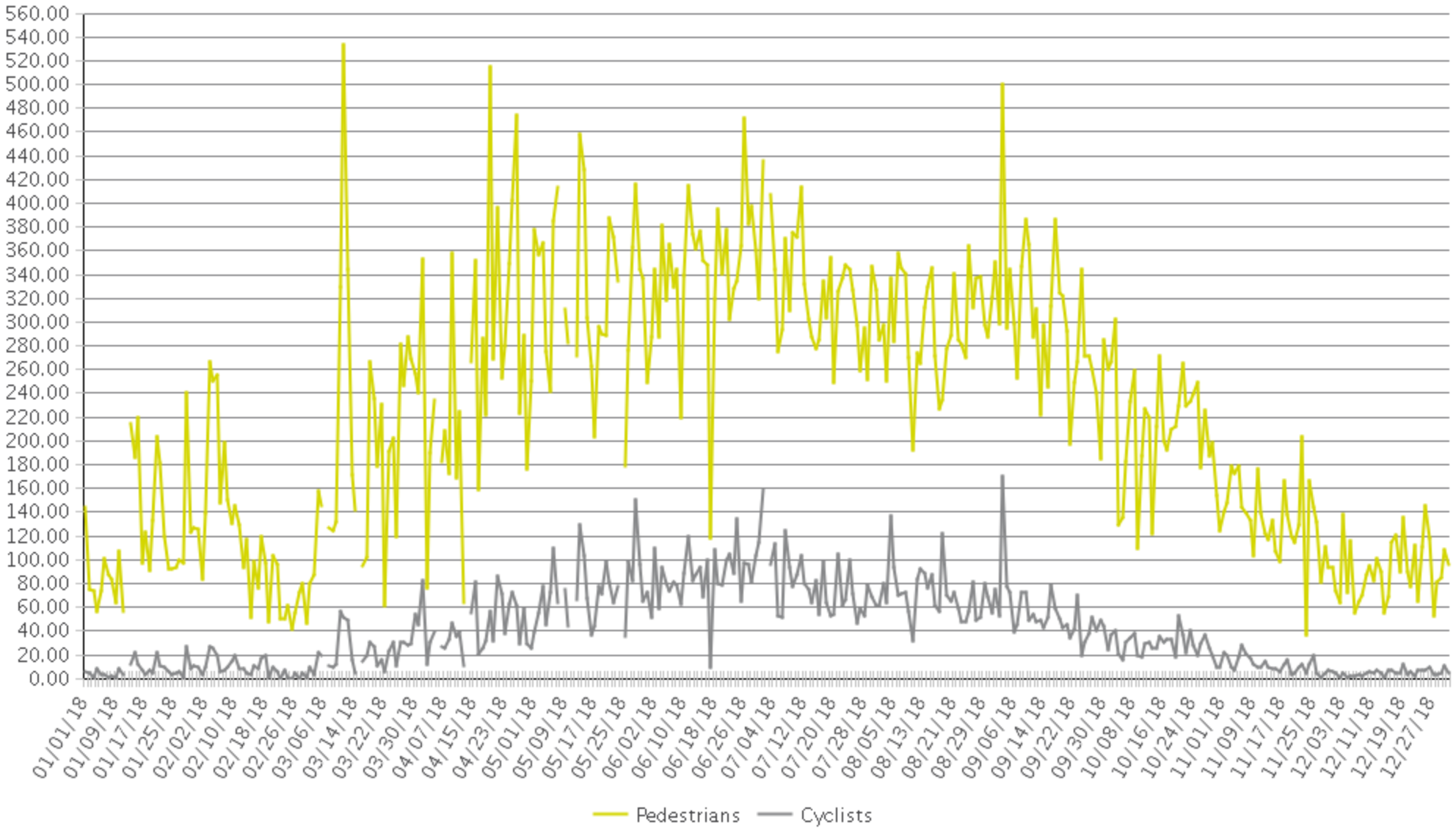
IN: East

OUT: West



Nampa - Wilson Pathway

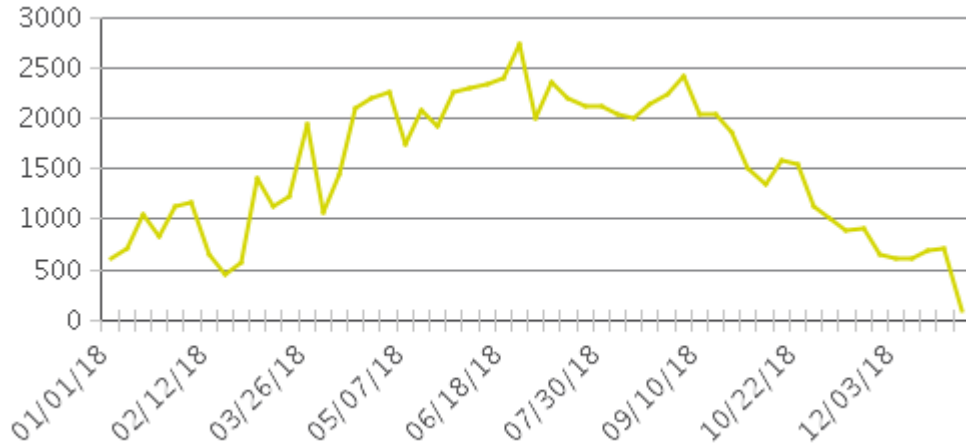
Period Analyzed: Monday, January 01, 2018 to Monday, December 31, 2018



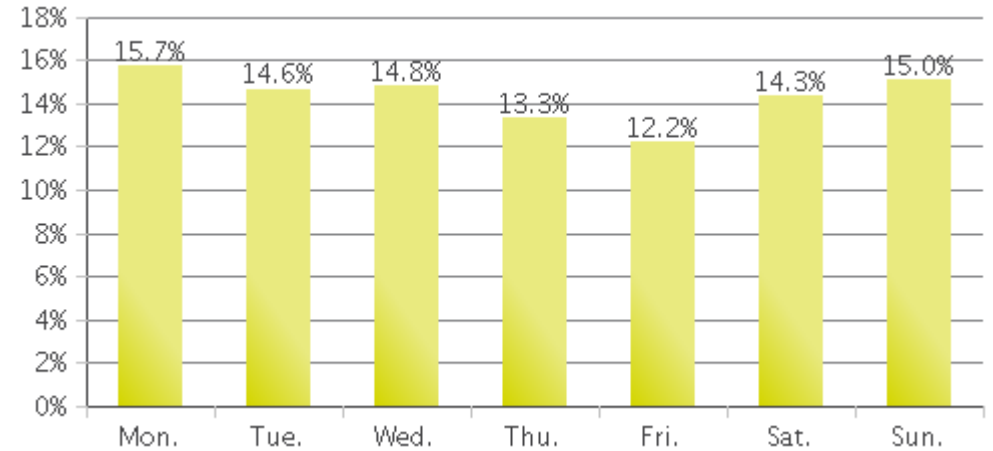
Nampa - Wilson Pathway (Pedestrians)

Period Analyzed: Monday, January 01, 2018 to Monday, December 31, 2018

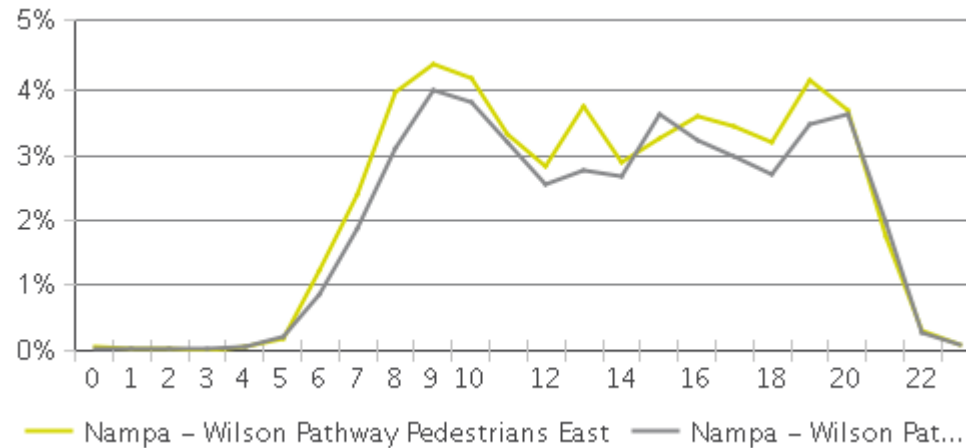
Weekly Traffic



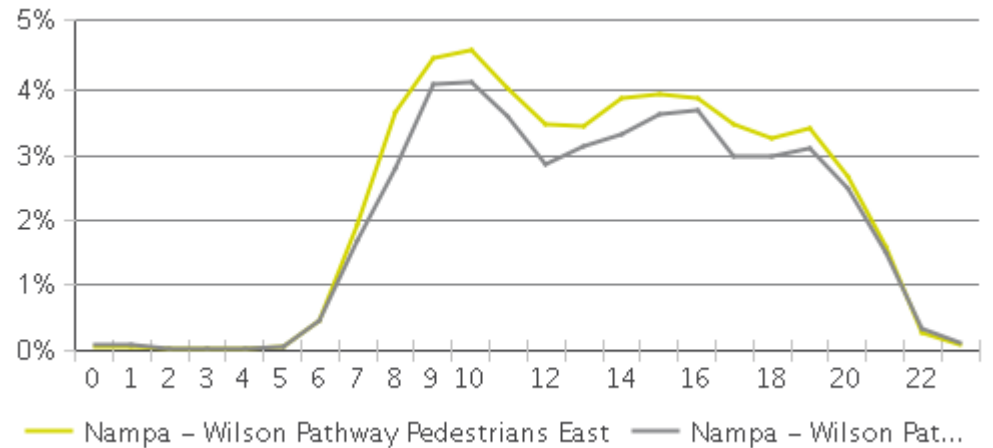
Weekly Profile



Hourly Profile during Weekdays



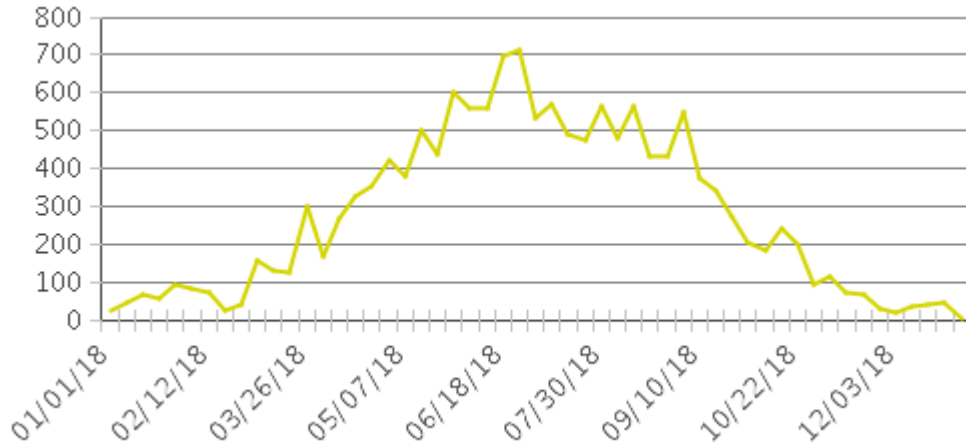
Hourly Profile during the Weekend



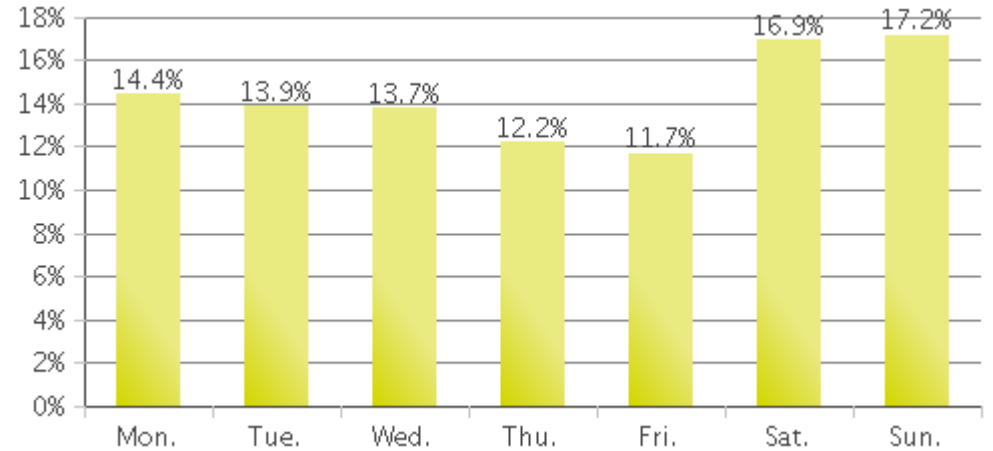
Nampa - Wilson Pathway (Cyclists)

Period Analyzed: Monday, January 01, 2018 to Monday, December 31, 2018

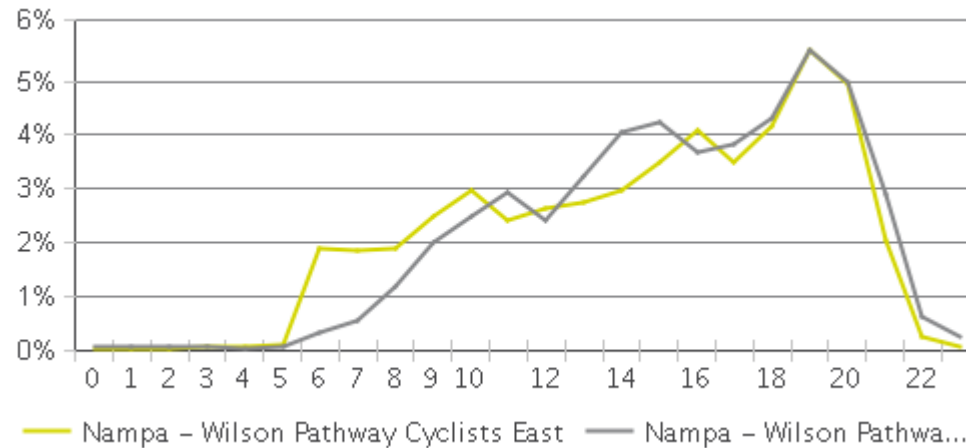
Weekly Traffic



Weekly Profile



Hourly Profile during Weekdays



Hourly Profile during the Weekend

