

Topic: Project Applications Review

Purpose: Reviewing FY2025-2031 Phase II Applications

Toni Tisdale, Principal Planner,
Transportation Resource Development Team Lead

Sherone Sader, Resource Development Assistant

Introduction

- Review the ranking process
- Understand the preliminary scoring process
- Review each application
- Provide discussion among organizations
- Next steps



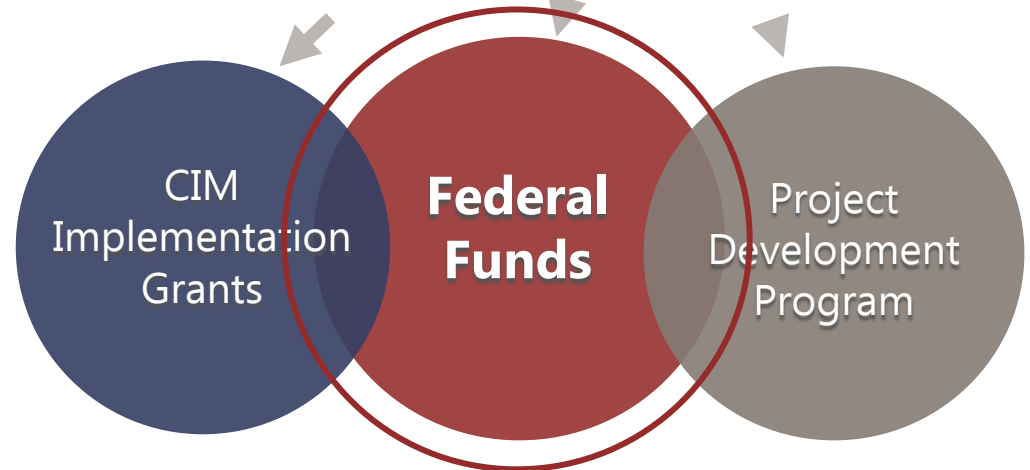
Resource Development Program



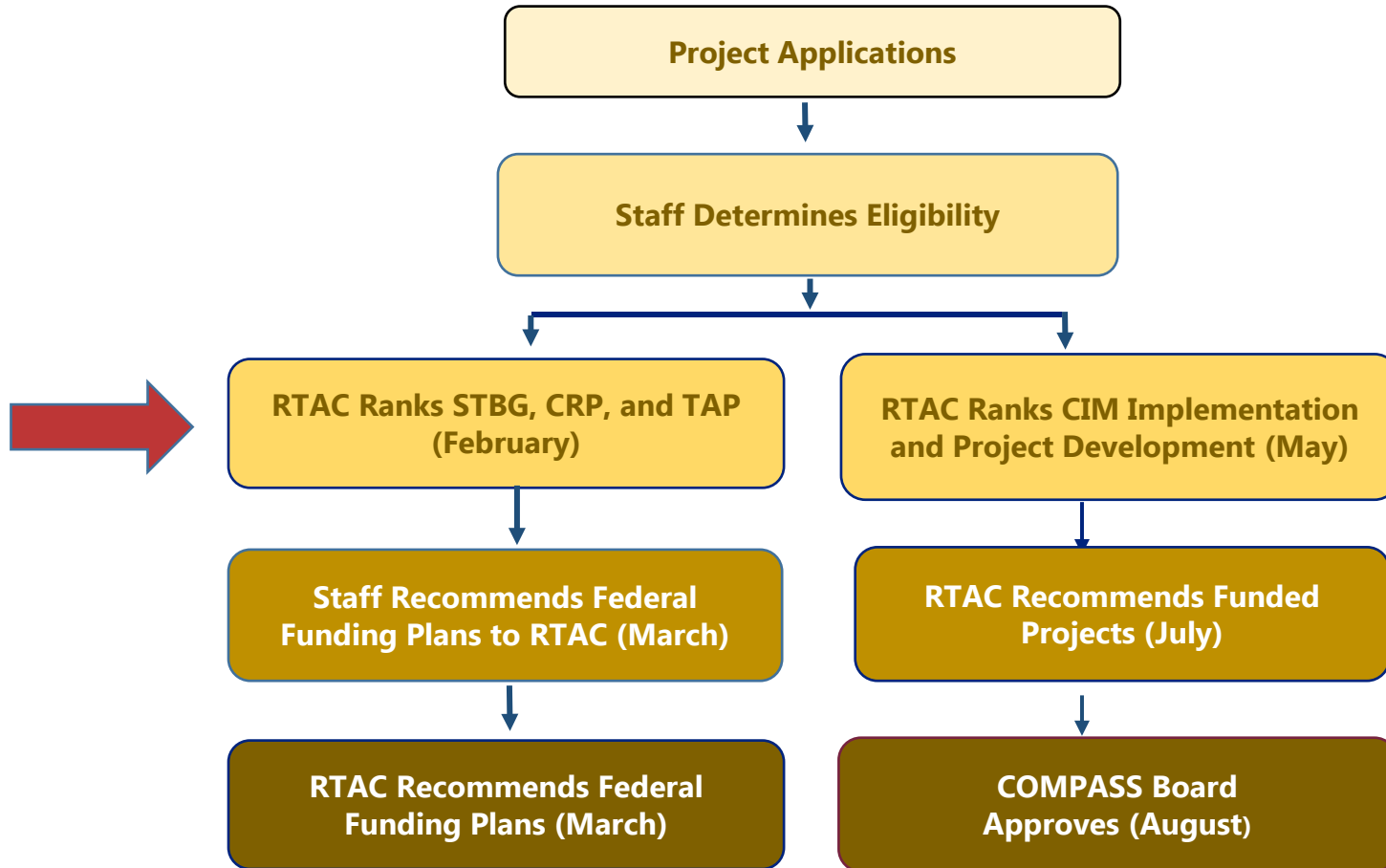
Funded Top-Ranked Projects

Unfunded Projects

- Find/share resources
- Grant assistance:
 - ✓ Eligibility
 - ✓ Writing
 - ✓ Review
 - ✓ Management
 - ✓ Letters of support



Application Process



Purpose of Scoring



Project Selection Consistent with CIM Goals



Integrates Products

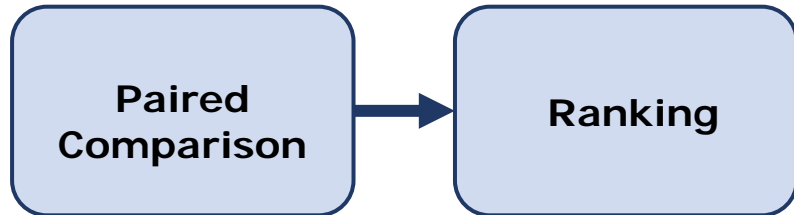


Objective Evaluation
(Performance-Based Planning and Programming)



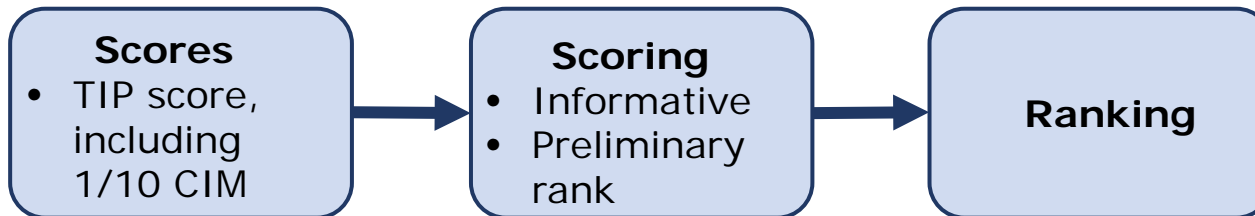
Facilitate conversations

Roadmap to Ranking:



Unscored Projects

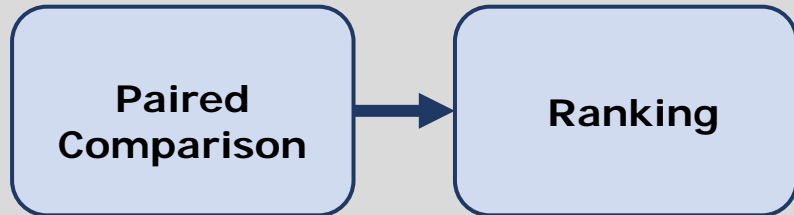
Studies, Special Projects, COMPASS local programs



Scored Projects

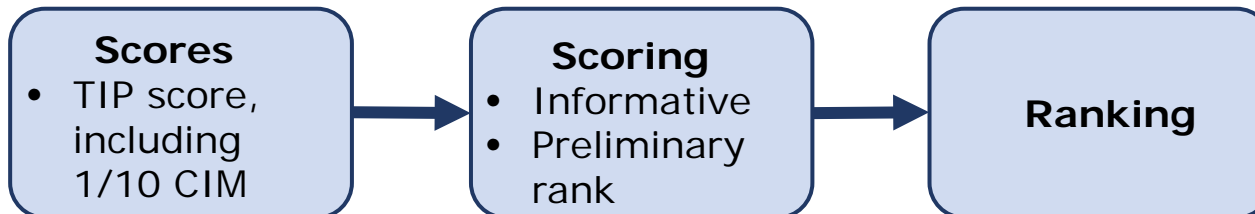
STBG, TAP, CRP

Roadmap to Ranking:



Unscored Projects

Studies, Special Projects, COMPASS local programs



Scored Projects

STBG, TAP, CRP

Paired Comparison Process

FY2025 Federal Studies Ranking Sheet

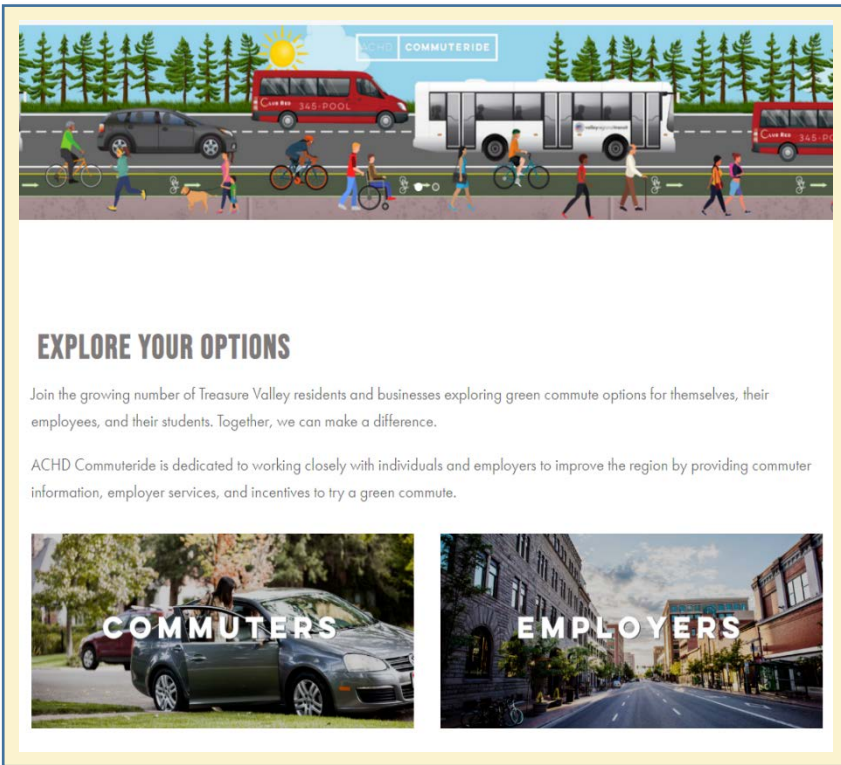
Agency Name:

Number of Votes:

Instructions: Enter agency name and the number of agency votes your scoring will count for; then click on empty cells and select your choice from drop-down in the bottom right corner (zooming in for easier viewing/selection). To see full project descriptions, click on header links below (example: [ACHD 1](#)). Be sure to rank both the CIMI page as well as the PDP page (tabs at bottom left).

		COMPASS 1	COMPASS 2	COMPASS 3	ACHD 1		Totals:	Total Agency Votes Counted in this Scoring:
		1. Alternative Fuel & Electric Vehicle Deployment Study COMPASS \$115,000 Requested Local Priority 1 of 3	2. Freight Plan COMPASS \$400,000 Requested Local Priority 2 of 3	3. Resilience Improvement Plan COMPASS \$175,000 Requested Local Priority 3 of 3	4. Commuteride Website Redesign ACHD \$50,000 Requested Local Priority 1 of 1			
1. Alternative Fuel & Electric Vehicle Deployment Study COMPASS \$115,000 Requested Local Priority 1 of 3	COMPASS 1					1. Alternative Fuel & Electric Vehicle Deployment Study COMPASS \$115,000 Requested Local Priority 1 of 3	COMPASS 1	0
2. Freight Plan COMPASS \$400,000 Requested Local Priority 2 of 3	COMPASS 2					2. Freight Plan COMPASS \$400,000 Requested Local Priority 2 of 3	COMPASS 2	0
3. Resilience Improvement Plan COMPASS \$175,000 Requested Local Priority 3 of 3	COMPASS 3					3. Resilience Improvement Plan COMPASS \$175,000 Requested Local Priority 3 of 3	COMPASS 3	0
4. Commuteride Website Redesign ACHD \$50,000 Requested Local Priority 1 of 1	ACHD 1					4. Commuteride Website Redesign ACHD \$50,000 Requested Local Priority 1 of 1	ACHD 1	0

Commuteride Website Redesign



Sponsor: Ada County Highway District

Fund Eligibility: STBG-TMA

Total Cost: \$70,000

Request: \$64,862

Local Rank: 1 of 1

Redesign Commuteride website to better align to the newly branded Ada County Highway District for education and outreach to Treasure Valley residents and commuters, specifically Canyon County and Ada County residents.

Alternative Fuel and Electric Vehicle Deployment Study



Sponsor: COMPASS

Fund Eligibility: STBG-TMA

Total Cost: \$115,000

Request: \$106,559

Local Rank: 1 of 3

Investigate the constraints facing alternative fueling and electric vehicle charging infrastructure and identify opportunities to coordinate investments at opportune locations across the region.

Freight Plan



Sponsor: COMPASS

Fund Eligibility: STBG-TMA

Total Cost: \$450,000

Request: \$416,970

Local Rank: 2 of 3

Update the 2018 freight plan to create a regional multimodal freight plan that aligns with the Communities in Motion 2050 (CIM 2050) Vision and goals, the region's Complete Network Policy, and the Regional Safety Action Plan.

Resilience Improvement Plan



Sponsor: COMPASS

Fund Eligibility: STBG-TMA

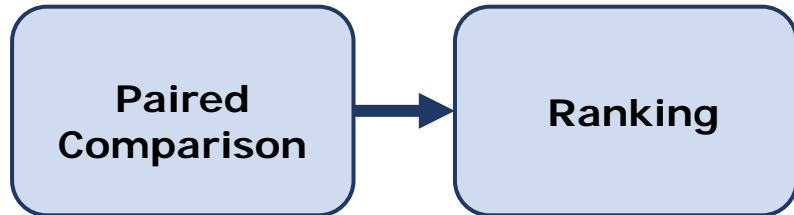
Total Cost: \$175,000

Request: \$162,155

Local Rank: 3 of 3

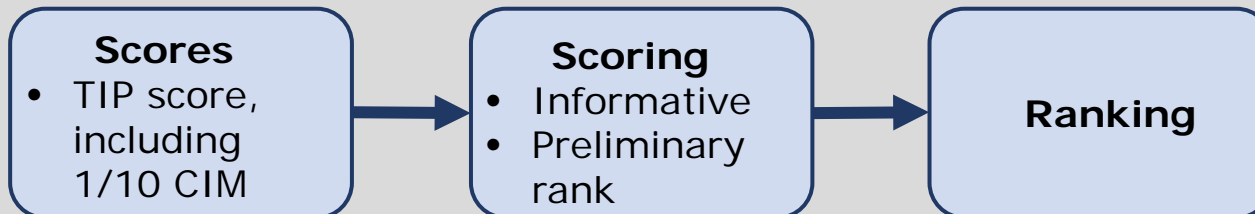
Assess the region's vulnerability to severe weather events and develop a list of needs and priority projects to improve the region's resiliency.

Roadmap to Ranking:



Unscored Projects

Studies, Special Projects, COMPASS local programs



Scored Projects

STBG, TAP, CRP

CIM 2050 Goals Areas



Roadway Project Scoring Summary

Performance Assessment:

Safety

- Does the project address a known auto safety issue?
- Does the project address a known active transportation safety issue?
- Does the project improve safety for auto users?
- Does the project improve safety for active transportation users?

Economic Vitality

- Does the project address a congestion issue using a transit alternative?
- Does the project improve a facility in "fair" or "poor" condition?
- Does the project improve freight mobility?

Convenience

- Does the project improve connectivity to a regional activity center?
- Does the project improve auto and/or active and public transit mode connectivity to key destinations?
- Does the project address a gap in the network?

Quality of Life

- Does the project benefit an underserved area?
- Does the project address any environmental impacts?

Maximum

Programming Assessment:

Readiness and Support

- Is the project a priority to the sponsor agency?
- Does the sponsor agency provide match above the required minimum?
- Is the project ready for Federal implementation?

Maximum

Total

Page 7

Active Transportation Project Scoring Summary

Performance Assessment:

Safety

- Does the project address a known active transportation safety issue?
- Does the project improve safety for active transportation users?

Economic Vitality

- Does the project address a priority gap in the active transportation network?
- Does the project improve a facility in "fair" or "poor" condition?
- Does the project provide an active mode alternative to a car segment?

Convenience

- Does the project improve active mode connectivity to public transit?
- Does the project improve active mode connectivity to key destinations?

Quality of Life

- Does the project benefit an underserved area?
- Does the project address an environmental impact?
- Does the project address an existing Americans with Disability Act (ADA) compliance issue?

Maximum Performance

Programming Assessment:

Readiness and Support

- Is the project a priority to the sponsor agency?
- Does the sponsor provide match above the required minimum?
- Is the project ready for Federal implementation?

Maximum Programming

Total Maximum

Page 14

Public Transportation Project Scoring Summary

Performance Assessment:

Safety

- | | |
|--|-----------|
| Does the project address a known safety issue for public transportation users? | 40 |
| Does the project improve safety for public transportation users? | 20 |
| Maximum Total: | 40 |

Economic Vitality

- | | |
|---|-----------|
| Does the project replace a vehicle (rolling stock) or equipment, and/or improve a facility consistent with the priorities of the Transit Asset Management Group (TAM) plan? | 10 |
| Does the project reduce travel time, improve speed and/or reliability of service? | 10 |
| Does the project include the purchase or maintenance of electric vehicles or related equipment? | 5 |
| Maximum Total: | 25 |

Convenience

- | | |
|--|-----------|
| Does the project improve public transportation access to regional activity centers? | 10 |
| Does the project address an existing Americans with Disability Act (ADA) compliance issue? | 5 |
| Does the project improve route transparency and information at transit connections? | 5 |
| Maximum Total: | 20 |

Quality of Life

- | | |
|--|-----------|
| Does the project benefit an area with potentially transit dependent populations? | 10 |
| Does the project adequately address any environmental impact? | 5 |
| Maximum Total: | 15 |

Maximum Performance Total: 100

Programming Assessment:

Readiness and Support

- | | |
|---|----|
| Is the project a priority to the sponsor agency or is the project in the TDP? | 10 |
| Does the sponsor agency provide match above the required minimum? | 10 |
| Is the project ready for Federal implementation? | 10 |

Maximum Programming Total: 30

Total Maximum Score: 130

Scoring Criteria

Preliminary Scores and Ranks

- Available with the review materials

FY2025-2031 Phase II Grant Applications
Detailed Preliminary Ranking

Prelim Rank	Project Name	Sponsor Agency	Location	Cost Estimate (total)	Scoring Criteria Used	CMM Score		Safety	Economic Viability	Convenience	Quality of Life	Resilience and Support	Total Score	Local Rank
						13 max	40 max	25 max	20 max	15 max	30 max	143 max		
Roadway														
1	Middleton Rd and Elijah Drain Rebuild, Karcher to Flamingo	City of Nampa	Lg Urban	\$ 4,427,280	Roadway	4	40	10	20	10	15	99	1 of 12	
2	Garity Boulevard and Stamm Ln, WINCO Block Improvements	City of Nampa	Lg Urban	\$ 8,529,060	Roadway	4.4	40	13	13	10	6	86.4	4 of 12	
3	Northside Boulevard Widening, Birch Lane to Cherry Lane	City of Nampa	Lg Urban	\$ 4,098,773	Roadway	13	30	15	17	10	0	85	8 of 12	
4	Madison Road & Ustick Road Intersection Improvements	City of Nampa	Lg Urban	\$ 7,686,212	Roadway	6.6	40	10	13	10	0	79.6	10 of 12	
5	Northside Boulevard and Cherry Lane Intersection Improvements	City of Nampa	Lg Urban	\$ 6,489,100	Roadway	7.1	30	15	8	10	8	78.1	2 of 12	
6	Locust Lane & Happy Valley Road Intersection Improvements	City of Nampa	Lg Urban	\$ 7,047,362	Roadway	13	40	0	11	10	0	74	7 of 12	
6	Midland Boulevard and Marketplace Boulevard Traffic and Safety Improvements	City of Nampa	Lg Urban	\$ 3,489,317	Roadway	0	40	5	13	10	6	74	6 of 12	
8	Northside Boulevard and Ustick Road Intersection Improvements	City of Nampa	Lg Urban	\$ 8,286,212	Roadway	6.6	40	10	5	10	1	72.6	11 of 12	
9	Franklin Boulevard and Cherry Lane Intersection Improvements	City of Nampa	Lg Urban	\$ 7,155,467	Roadway	7.1	30	15	5	10	5	72.1	3 of 12	
10	Garity Boulevard and N 39th Street Intersection Improvements	City of Nampa	Lg Urban	\$ 4,668,332	Roadway	0	40	13	7	10	1	71	9 of 12	
11	Airport Road and N 39th Street Intersection Improvements	City of Nampa	Lg Urban	\$ 5,131,725	Roadway	0	20	10	9	10	1	50	12 of 12	
Alternative Transportation														
Prelim Rank	Project Name	Sponsor Agency	Location	Cost Estimate (total)	Scoring Criteria Used	10 max	40 max	25 max	20 max	15 max	30 max	140 max	Local Rank	
1	Spoils Bank Canal Multiuse Pathway	City of Boise	TMA	\$ 2,462,941	Active Transportation	10	40	15	20	15	14	114	1 of 1	
2	West Glenwood Sidewalk, Glenwood Bridge to Riverside Drive	City of Garden City	TMA	\$ 1,219,400	Active Transportation	10	27	16	20	13	14	100	1 of 1	
3	Garity Boulevard Side Path, Stamm Lane to Carnation Drive	City of Nampa	Lg Urban	\$ 3,357,406	Active Transportation	5	40	13	20	15	4	97	5 of 12	
Other														
TBD	ACHD Commuter Website Redesign	ACHD	TMA	\$ 70,000	Special Project								0	1 of 1
TBD	Alternative Fuel & Electric Vehicle Deployment Study	COMPASS	Regional	\$ 115,000	Study								0	1 of 3
TBD	Freight Plan	COMPASS	Regional	\$ 450,000	Study								0	2 of 3
TBD	Resilience Improvement Plan	COMPASS	Regional	\$ 175,000	Study								0	3 of 3

Summary Ranking - Roadway

Prelim Rank	Project	Sponsor
1	Middleton Road and Elijah Drain Rebuild, Karcher to Flamingo	Nampa
2	Garrity Boulevard and Stamm Lane, Winco Block Improvements	Nampa
3	Northside Boulevard Widening, Birch Lane to Cherry Lane	Nampa
4	Madison Road and Ustick Road Intersection Improvements	Nampa
5	Northside Boulevard and Cherry Lane Intersection Improvements	Nampa
6	Locust Lane and Happy Valley Road Intersection Improvements	Nampa
6	Midland Boulevard and Marketplace Boulevard Traffic and Safety Improvements	Nampa

Summary Ranking - Roadway

Prelim Rank	Project	Sponsor
8	Northside Boulevard and Ustick Road Intersection Improvements	Nampa
9	Franklin Boulevard and Cherry Lane Intersection Improvements	Nampa
10	Garrity Boulevard and N 39th Street Intersection Improvements	Nampa
11	Airport Road and N 39th Street Intersection Improvements	Nampa

Summary Ranking - Alternative

Prelim Rank	Project	Sponsor
1	Spoils Bank Canal Multiuse Pathway	Boise
2	West Glenwood Sidewalk, Glenwood Bridge to Riverside Drive	Garden City
3	Garrity Boulevard Side Path, Stamm Lane to Carnation Drive	Nampa



Middleton Road and Elijah Drain Rebuild, Karcher Boulevard to Flamingo Avenue



Middleton Rd Rebuild
Flamingo Ave to Karcher Rd
Exhibit A



Sponsor: City of Nampa

Fund Eligibility: STBG-LU

Total Cost: \$4,427,280

Request: \$4,102,318

Local Rank: 1 of 12

Replace a two-lane bridge with a box culvert and widen Middleton Road between Karcher Road and Flamingo Avenue from 2 lanes to 5 lanes, including curb, gutter, and sidewalk/pathway.

Garrity Boulevard and Stamm Lane Winco Block Improvements



Sponsor: City of Nampa

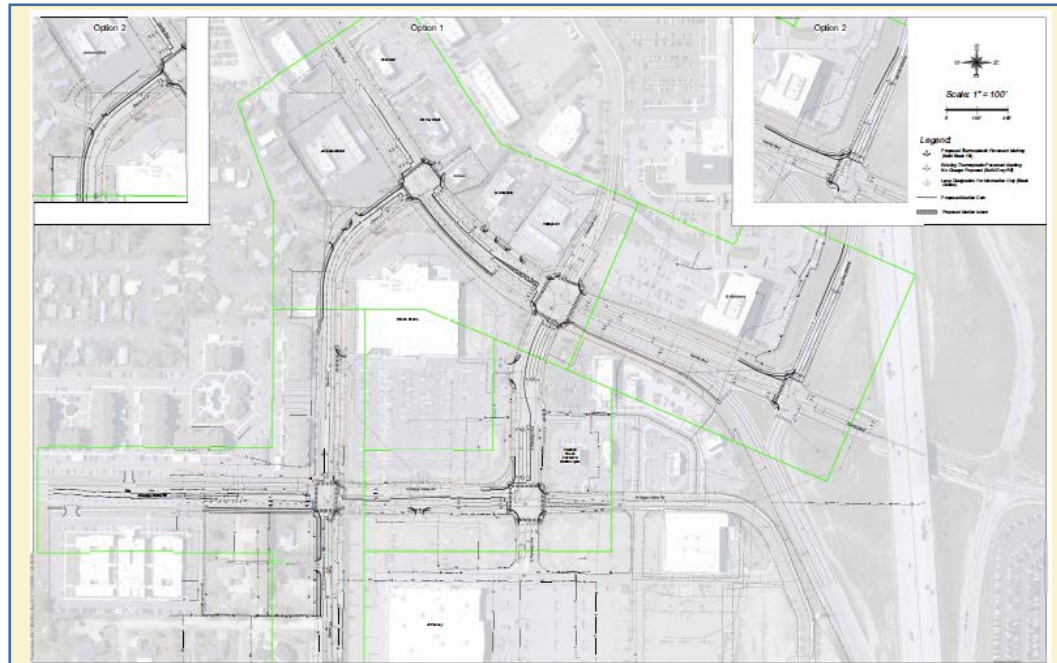
Fund Eligibility: STBG-LU

Total Cost: \$8,529,060

Request: \$7,903,027

Local Rank: 4 of 12

Improve operations, safety, and mobility for all travel modes on streets and intersections including Flamingo Avenue, Stamm Lane, Happy Valley Road, and Garrity Boulevard to improve capacity and decrease crash counts.



Northside Boulevard Widening, Birch Lane to Cherry Lane



Sponsor: City of Nampa

Fund Eligibility: STBG-LU

Total Cost: \$4,098,774

Request: \$3,797,923

Local Rank: 8 of 12

Construct a roundabout and widen Northside Boulevard between Birch Lane and Cherry Lane to improve capacity between two proposed improved intersection projects and add pedestrian facilities along the corridor.

Madison Road and Ustick Road Intersection Improvements



Sponsor: City of Nampa

Fund Eligibility: STBG-LU

Total Cost: \$7,686,212

Request: \$7,122,044

Local Rank: 10 of 12

Improve the intersection by constructing a roundabout to improve capacity and safety including improving the roadway and adding bicycle and pedestrian facilities to impact local, regional, and freight quality.



Northside Boulevard and Cherry Lane Intersection Improvements



Sponsor: City of Nampa

Fund Eligibility: STBG-LU

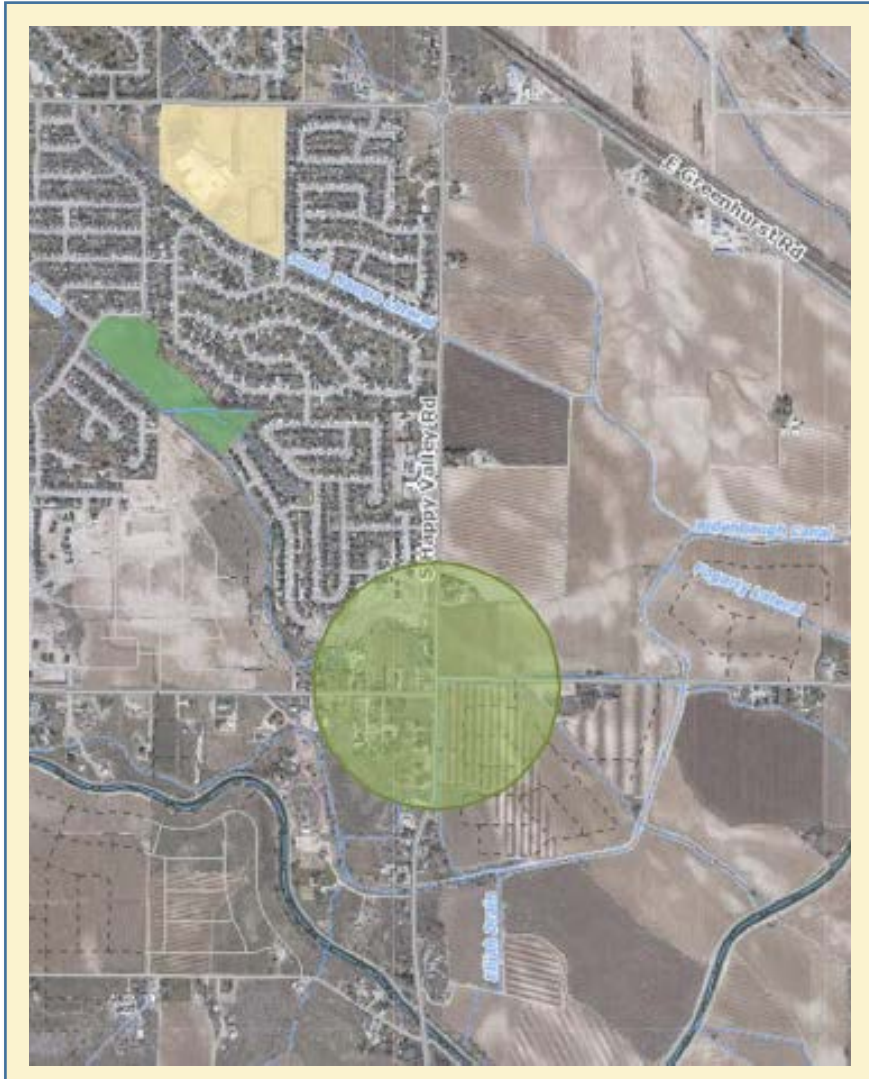
Total Cost: \$6,489,100

Request: \$6,012,800

Local Rank: 2 of 12

Improve the intersection by constructing a roundabout to improve capacity and safety including improving the roadway and adding bicycle and pedestrian facilities.

Locust Lane and Happy Valley Road Intersection Improvements



Sponsor: City of Nampa

Fund Eligibility: STBG-LU

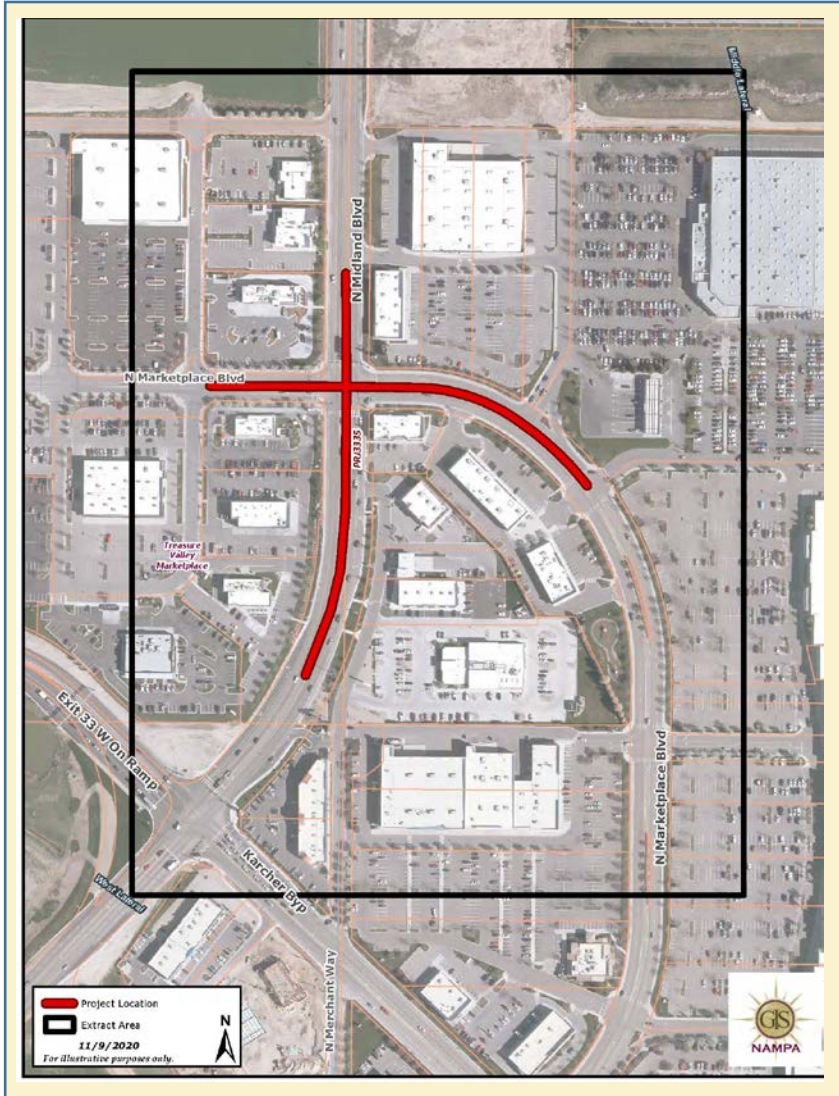
Total Cost: \$7,047,362

Request: \$6,530,086

Local Rank: 7 of 12

Improve the intersection by constructing a roundabout to improve capacity and safety including improving the roadway and adding bicycle and pedestrian facilities and the current offset at Locust Lane.

Midland Boulevard and Marketplace Traffic and Safety Improvements



Sponsor: City of Nampa

Fund Eligibility: STBG-LU

Total Cost: \$3,489,317

Request: \$3,233,201

Local Rank: 6 of 12

Improve safety and mobility at the intersection as well as the corridor of Marketplace Boulevard to reduce crashes, provide improved mobility for all modes of travel, and ensure emergency accessibility to the hospital to the north and the I-84 interchange to the south.

Northside Boulevard and Ustick Road Intersection Improvements



Sponsor: City of Nampa

Fund Eligibility: STBG-LU

Total Cost: \$8,286,212

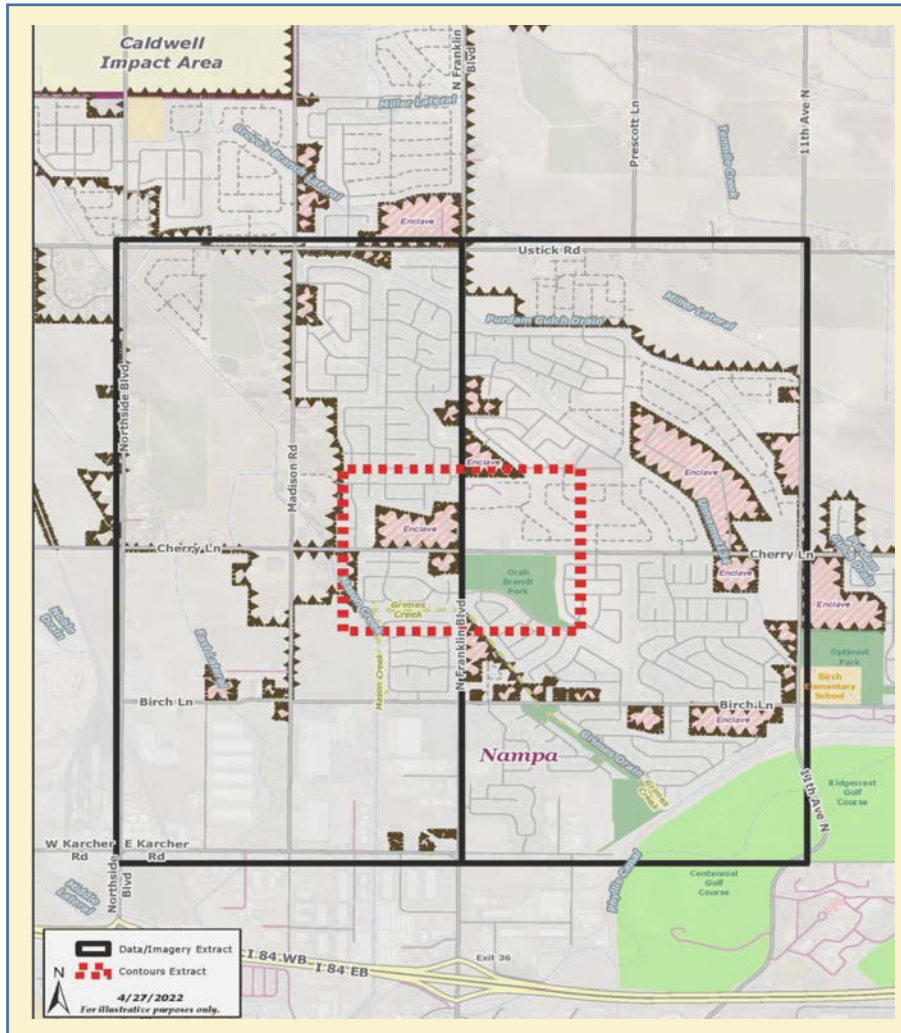
Request: \$7,678,004

Local Rank: 11 of 12

Improve the intersection by constructing a roundabout to improve capacity and safety, and local, regional, and freight quality, including improving the roadway and adding bicycle and pedestrian facilities.



Franklin Boulevard and Cherry Lane Intersection Improvements



Sponsor: City of Nampa

Fund Eligibility: STBG-LU

Total Cost: \$7,155,467

Request: \$6,630,256

Local Rank: 3 of 12

Improve the intersection by constructing a roundabout to improve capacity and safety including improving the roadway and adding bicycle and pedestrian facilities.

Garrity Boulevard and N 39th Street Intersection Improvements



Sponsor: City of Nampa

Fund Eligibility: STBG-LU

Total Cost: \$4,668,332

Request: \$4,325,676

Local Rank: 9 of 12

Address current deficiencies as well as future capacity needs along N 39th Street to and from the Nampa Municipal Airport, improving N 39th Street as the primary access to Nampa Municipal Airport from Garrity Boulevard.

Airport Road and N 39th Street Intersection Improvements



Sponsor: City of Nampa

Fund Eligibility: STBG-LU

Total Cost: \$5,131,725

Request: \$4,755,056

Local Rank: 12 of 12

Improve the intersection by constructing a signal or roundabout to improve capacity and safety by eliminating thru access along Airport Road particularly at Kings Road.

Spoils Bank Canal Multi-Use Pathway



Sponsor: City of Boise

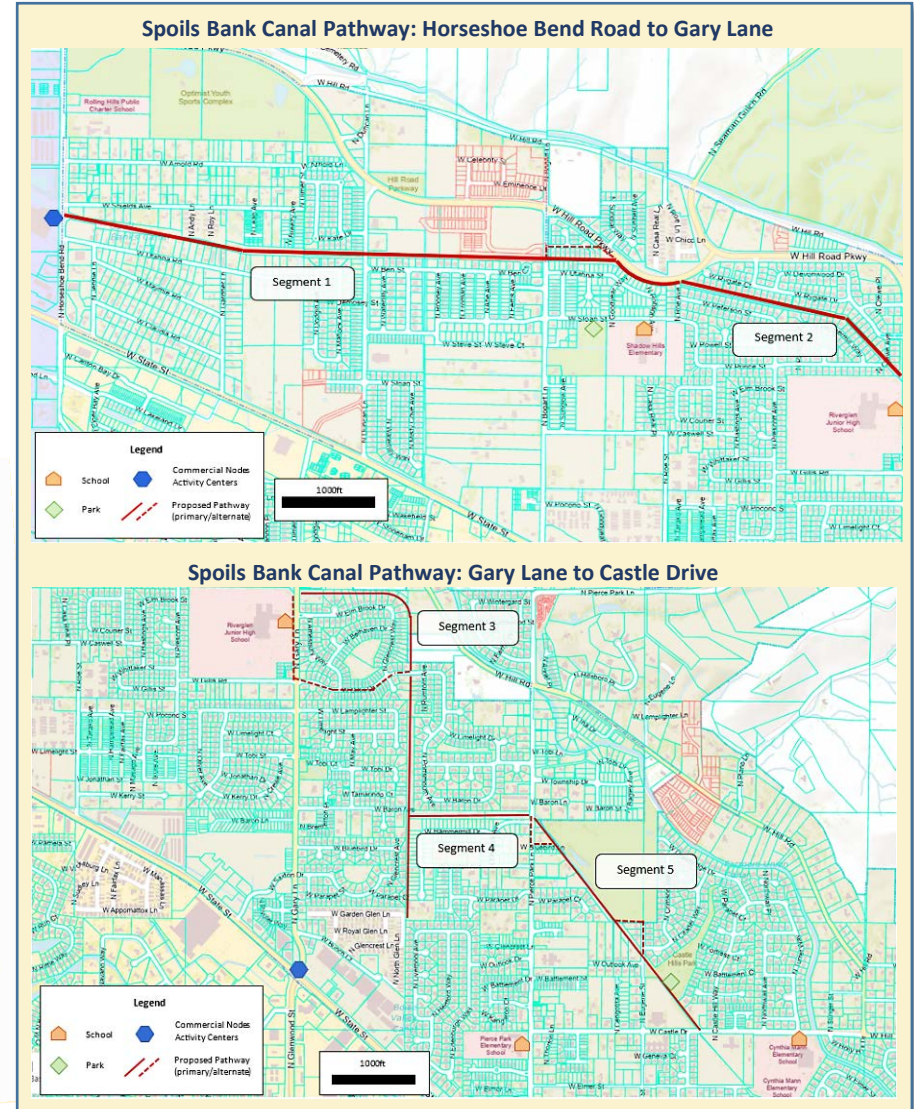
Fund Eligibility: STBG-TMA, TAP-TMA, CRP-TMA

Total Cost: \$2,462,941

Request: \$2,282,161

Local Rank: 1 of 1

Construct a 12-foot pathway along Spoils Bank Canal from Horseshoe Bend Road to Hill Road in northwest Boise. (Segments 1 and 5 in the project description.)



West Glenwood Sidewalk, Glenwood Bridge to Riverside Dr



Sponsor: City of Garden City

Fund Eligibility: STBG-TMA, TAP-TMA,
and CRP-TMA

Total Cost: \$1,219,400

Request: \$1,129,896

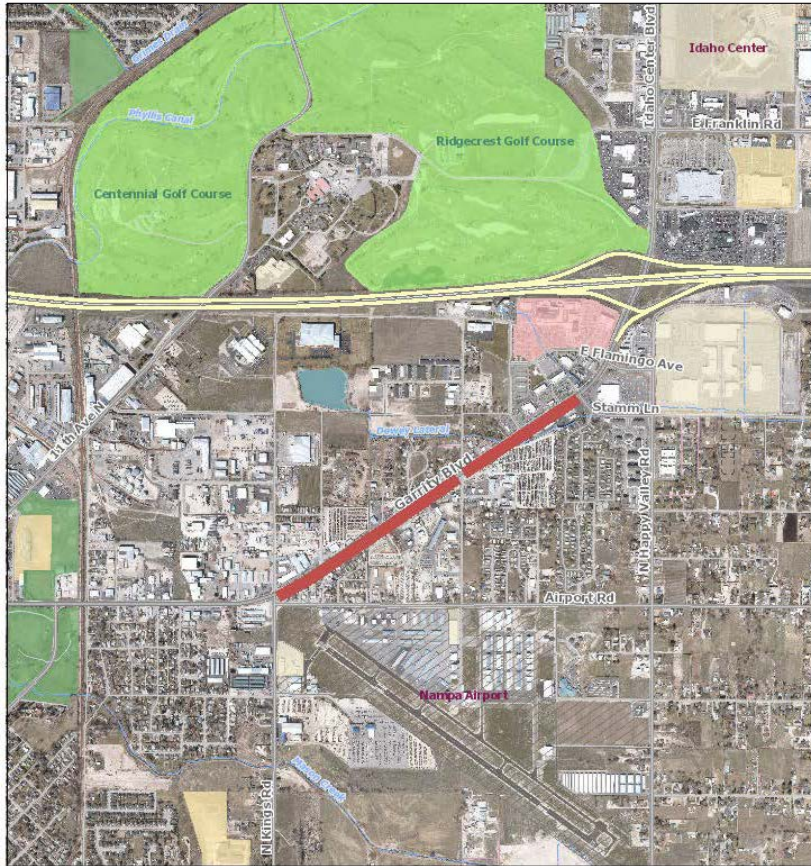
Local Rank: 1 of 1

Improve Glenwood and Riverside intersection with bicycle and pedestrian facilities in all directions, including paved access from Riverside to the bridge on the west side of Glenwood, providing ADA compliant access to a bus stop.

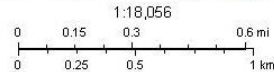
Garrity Side Path, Stamm Lane to Carnation



Garrity Blvd Side Path



5/4/2022, 9:36:06 AM



Sponsor: City of Nampa

Fund Eligibility: STBG-LU, CRP-LU

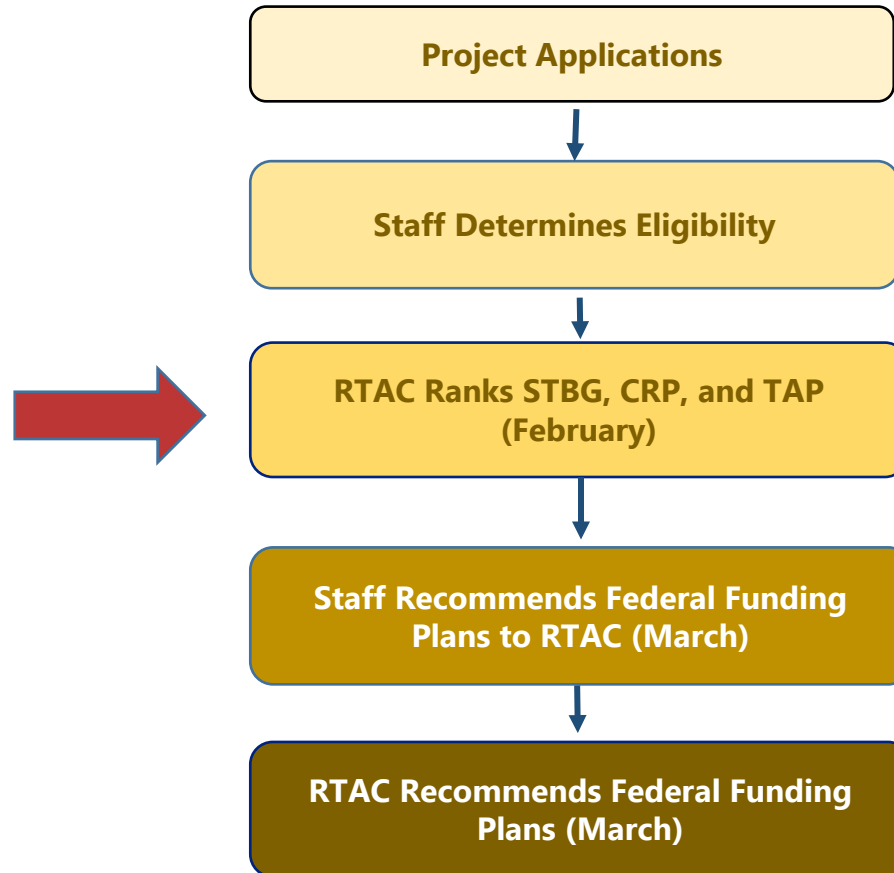
Total Cost: \$3,357,406

Request: \$3,110,972

Local Rank: 5 of 12

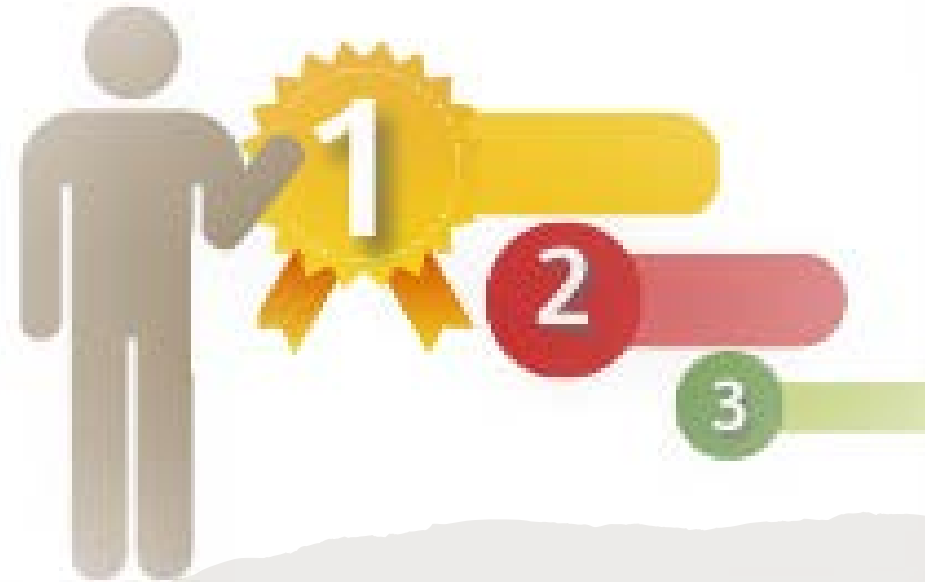
Extend the sidewalk width along the south-eastern side of Garrity Boulevard from N. 39th Street to Sugar Street. Stamm Lane to N. 39th Street is funded separately and will change the total cost.

Application Timeline



Conclusion/summary

- Deeper understanding of each application, to help guide your ranking process.
- Discussion among all organizations.
- Understand preliminary scoring process



Questions?



Contact

Toni Tisdale

Principal Planner, Transportation Resource Development Team Lead

ttisdale@compassidaho.org

Sherone Sader

Resource Development Assistant

ssader@compassidaho.org

Find us online!



www.compassidaho.org



www.facebook.com/compassidaho



www.twitter.com/compassidaho



www.linkedin.com/company/compassidaho



www.instagram.com/compassidaho



www.youtube.com/compassidaho



www.nextdoor.com/COMPASSidaho