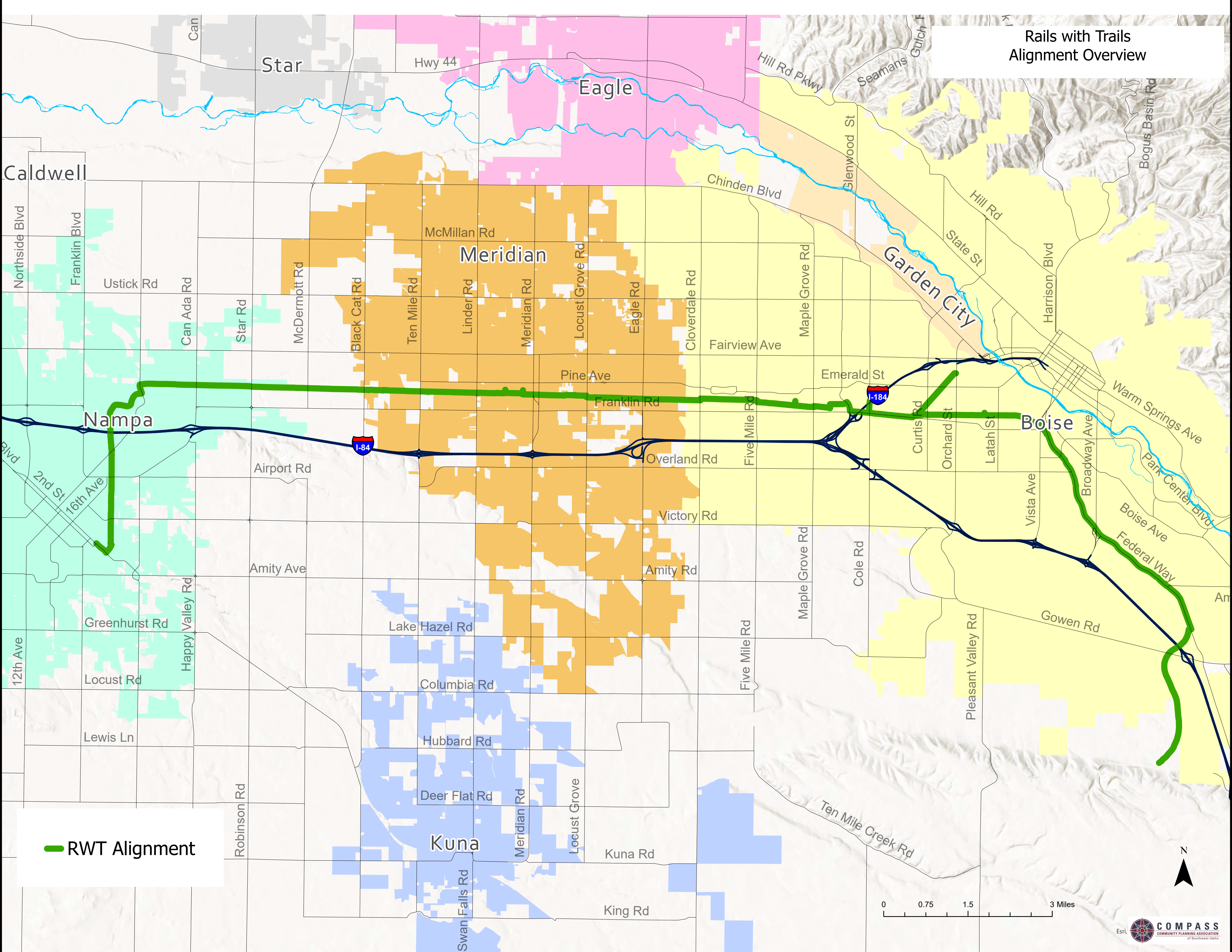


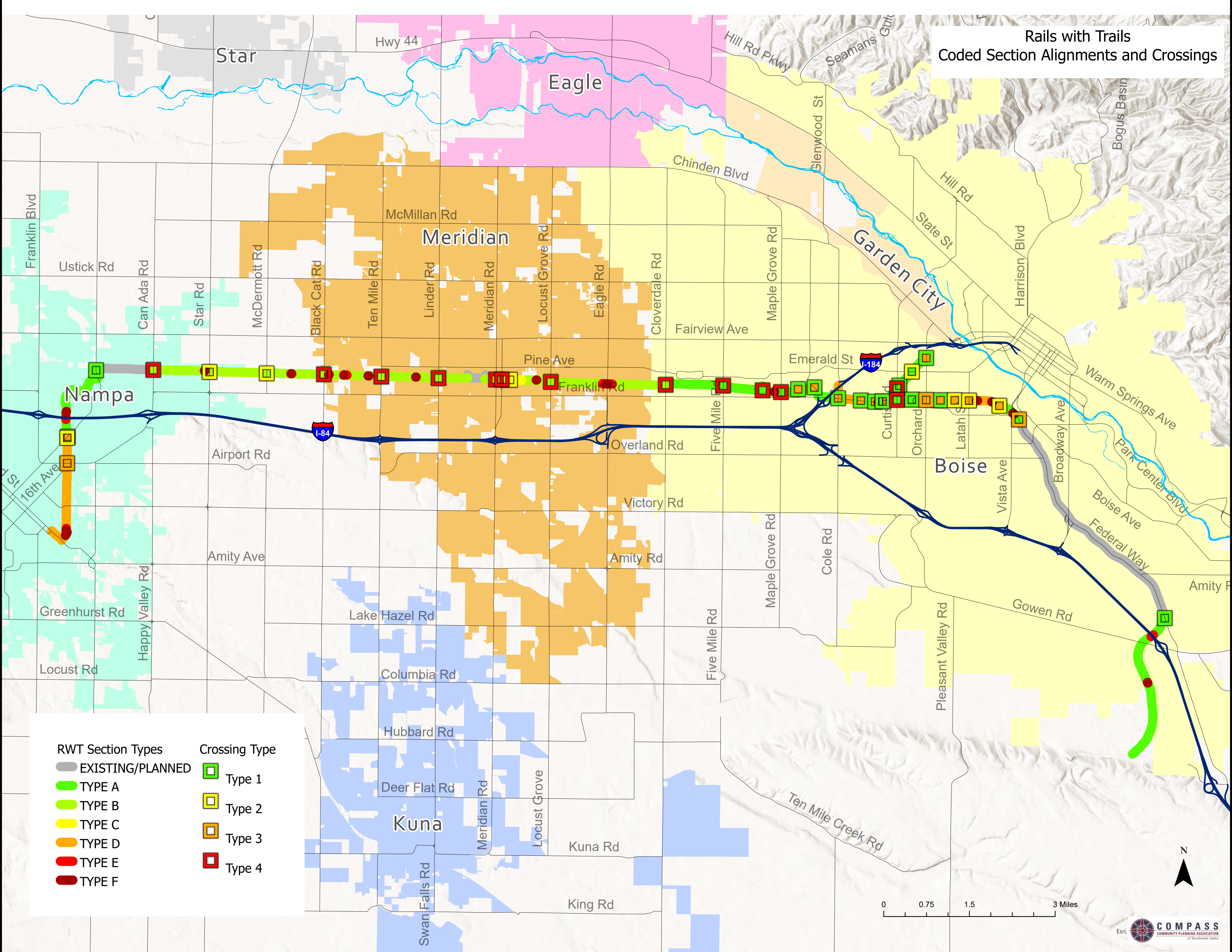
Rails with Trails Alignment Overview



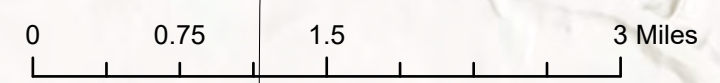
— RWT Alignment

0 0.75 1.5 3 Miles

Rails with Trails
Coded Section Alignments and Crossings



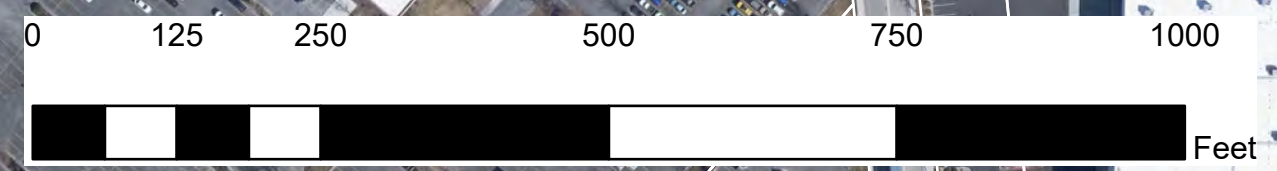
RWT Section Types	Crossing Type
EXISTING/PLANNED	Type 1
TYPE A	Type 2
TYPE B	Type 3
TYPE C	Type 4
TYPE D	
TYPE E	
TYPE F	



Eagle Rd to Cloverdale Rd

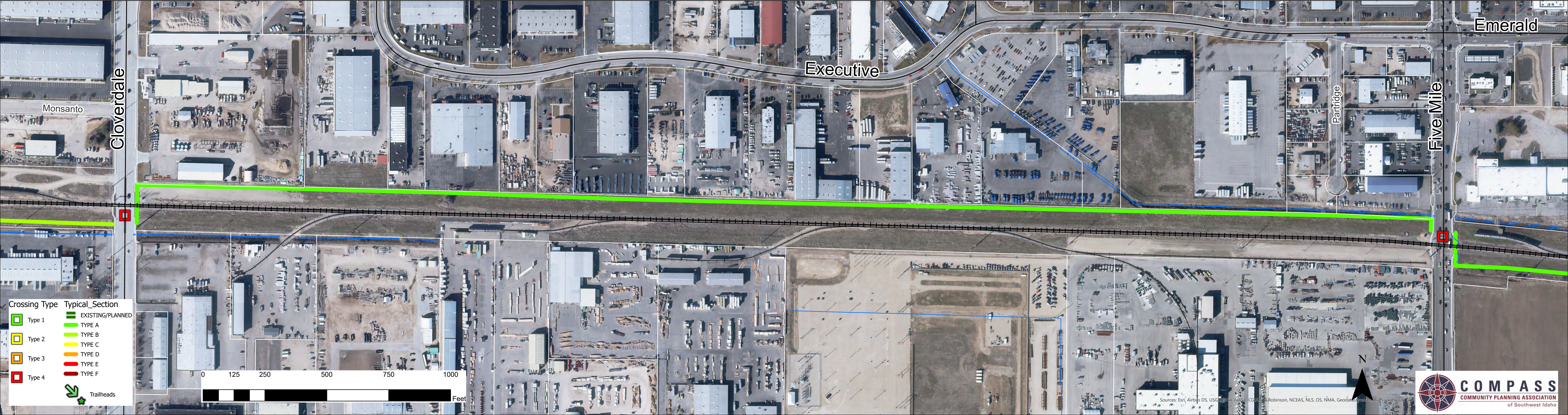


Crossing Type	Typical Section
Type 1	EXISTING/PLANNED
Type 2	TYPE A
Type 3	TYPE B
Type 4	TYPE C
	TYPE D
	TYPE E
	TYPE F
	Trailheads

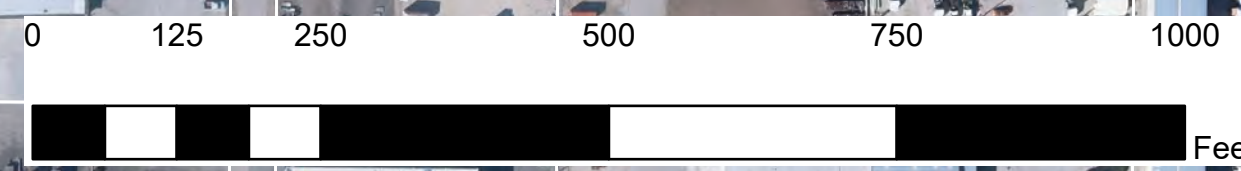


Sources: Esri, Garmin, DeLorme, NAVTEQ, NASA, IGN, NRC, NCEAS, NLS, OS, NMA, Geodatastyrelsen, Rijkswaterstaat, GSA

Cloverdale Rd to Five Mile Rd



Crossing Type	Typical Section
Type 1	EXISTING/PLANNED
Type 2	TYPE A
Type 3	TYPE B
Type 4	TYPE C
	TYPE D
	TYPE E
	TYPE F
	Trailheads



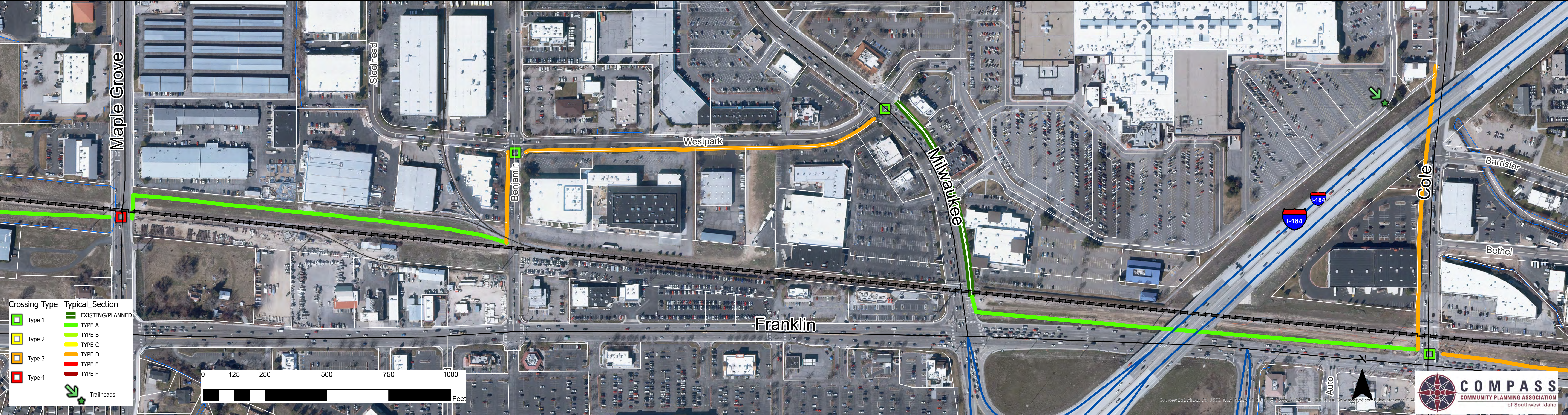
Sources: Esri, Airbus DS, USGS, NGA, NASA, CGIAR, Robinson, NCEAS, NLS, OS, NMA, Geodatasystem, Rijkswaterstaat, GSA



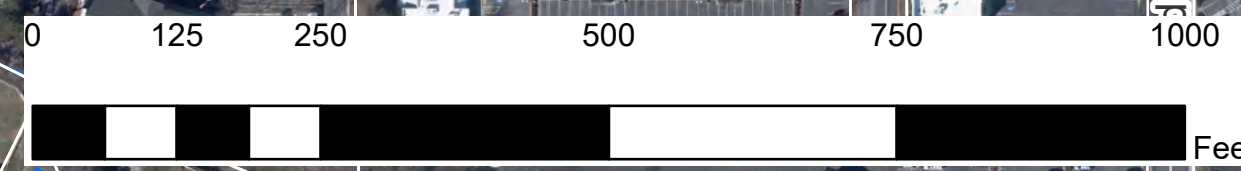
Five Mile Rd to Maple Grove Rd



Maple Grove Rd to Cole Rd



Crossing Type	Typical Section
Type 1	EXISTING/PLANNED
Type 2	TYPE A
Type 3	TYPE B
Type 4	TYPE C
	TYPE D
	TYPE E
	TYPE F
	Trailheads

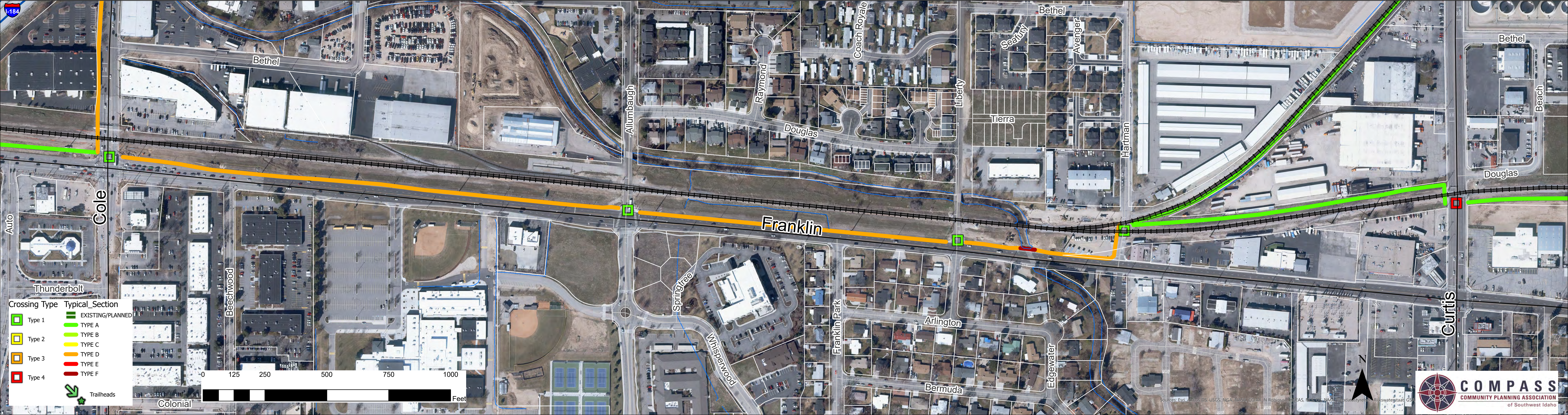


Auto



Sources: Esri, Airphoto DS, USGS, NEA, NASA, CGIAR, NRC, Johnson, NCEAS, NLS, CS, NMA, Geodatastyrelsen, GIK, waterstaat, GSA

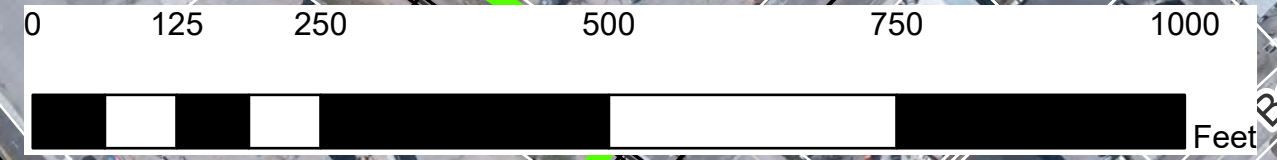
Cole Rd to Curtis Rd



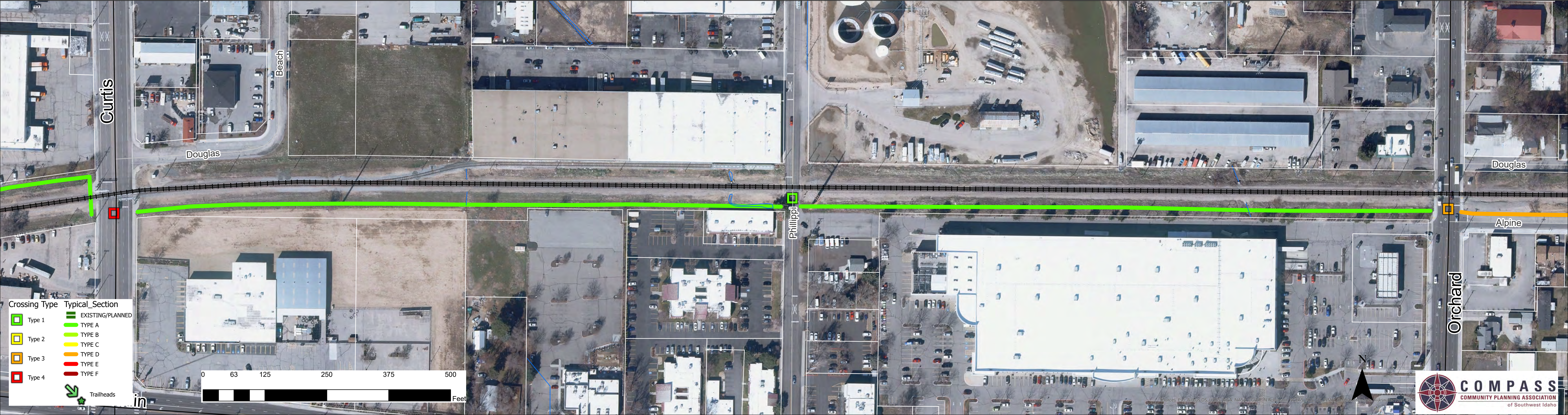
Spur (Hartman St to Irving St)



Crossing Type	Typical Section
Type 1	EXISTING/PLANNED
Type 2	TYPE A
Type 3	TYPE B
Type 4	TYPE C
	TYPE D
	TYPE E
	TYPE F
	Trailheads

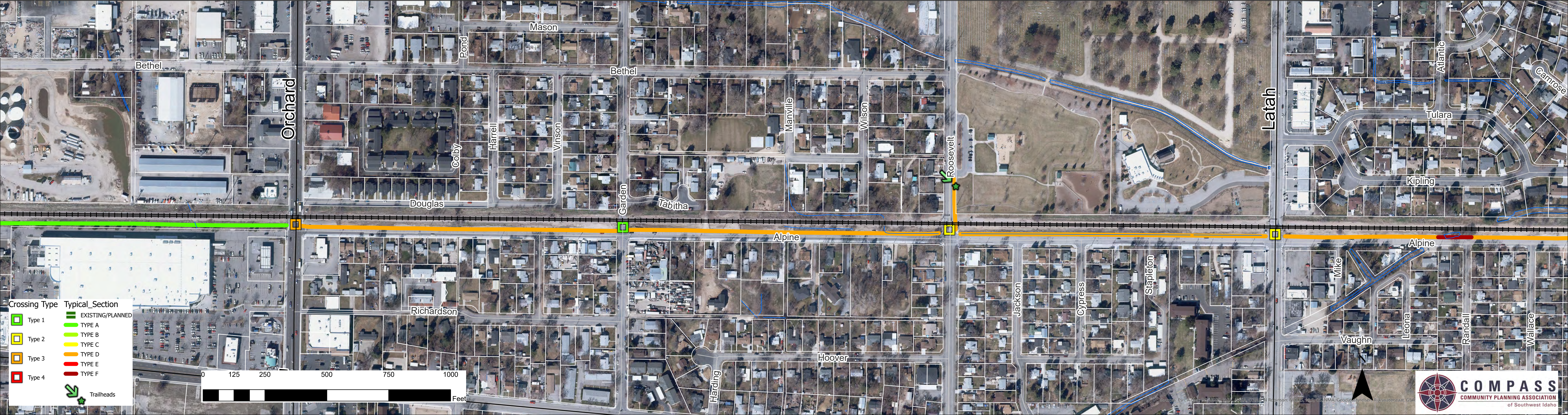


Curtis Rd to Orchard St



- | Crossing Type | Typical Section |
|---------------|------------------|
| Type 1 | EXISTING/PLANNED |
| Type 2 | TYPE A |
| Type 3 | TYPE B |
| Type 4 | TYPE C |
| | TYPE D |
| | TYPE E |
| | TYPE F |
| | Trailheads |

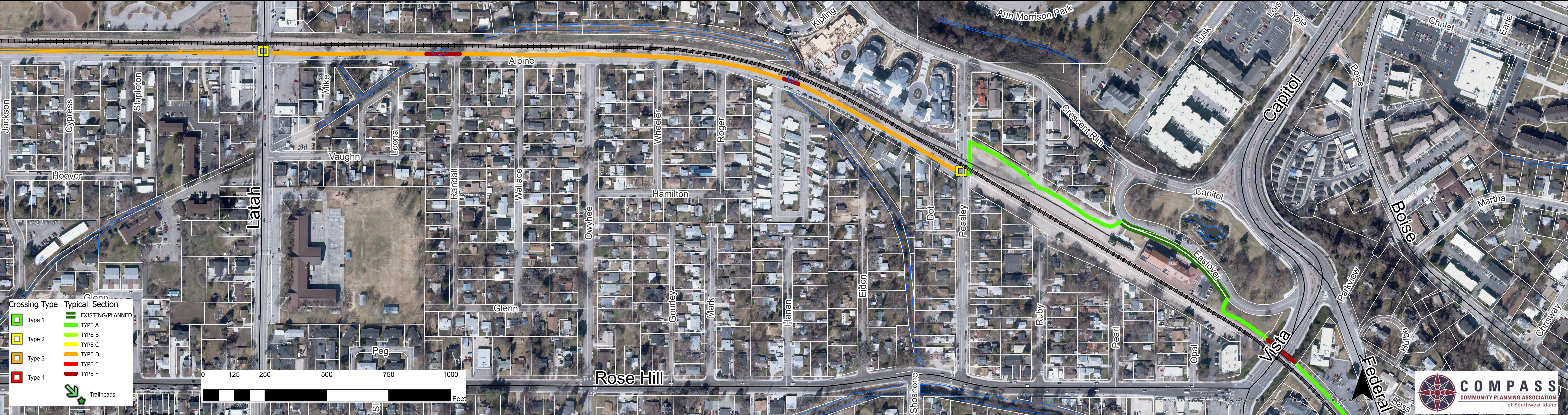
Orchard St to Latah St



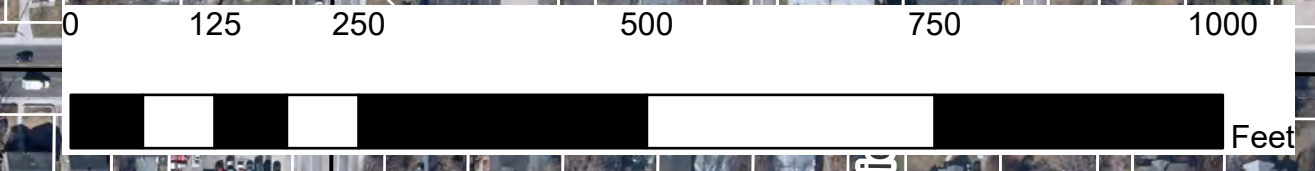
Crossing Type	Typical Section
Type 1	EXISTING/PLANNED
Type 2	TYPE A
Type 3	TYPE B
Type 4	TYPE C
	TYPE D
	TYPE E
	TYPE F
	Trailheads



Latah St to Vista Ave



Crossing Type	Typical Section
Type 1	EXISTING/PLANNED
Type 2	TYPE A
Type 3	TYPE B
Type 4	TYPE C
	TYPE D
	TYPE E
	TYPE F
	Trailheads

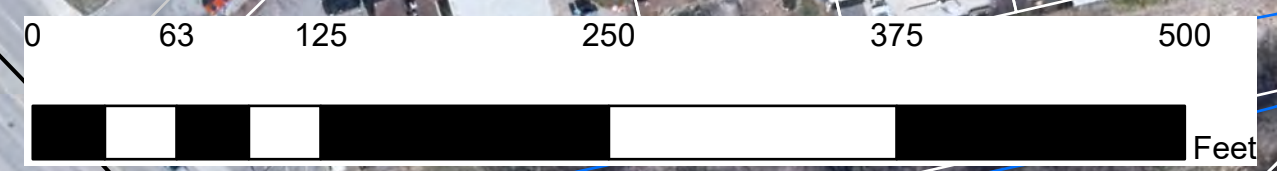


Sources: Esri, Airphoto, USGS, NOAA, NASA, CGIAR, Robinson, NOAA, NLS, OSM, NMA, Modesto, Reson, Wetwater, USA

Vista Ave to Protest Rd



Crossing Type	Typical Section
Type 1	EXISTING/PLANNED
Type 2	TYPE A
Type 3	TYPE B
Type 4	TYPE C
Trailheads	TYPE D
	TYPE E
	TYPE F



Sources: Esri, Airbus DS, USGS, NGA, NASA, CGLER, N, Res, 3rd, NCGAS, NLS, OS, NMA, Geodan, r, s, a, P, R, i, z, o, w, s, t, e, a, t, G, S, A



Protest Rd to Broadway Ave



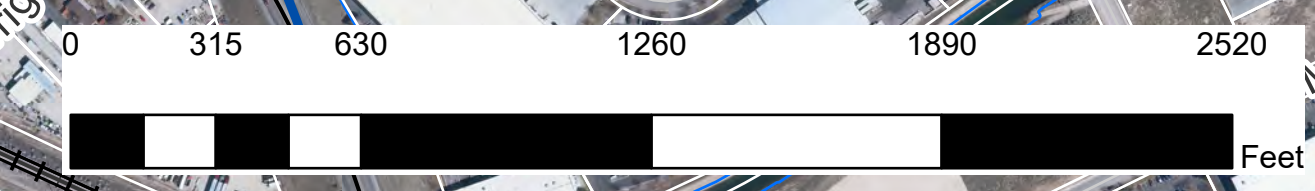
Crossing Type	Typical Section
Type 1	EXISTING/PLANNED
Type 2	TYPE A
Type 3	TYPE B
Type 4	TYPE C
	TYPE D
	TYPE E
	TYPE F
	Trailheads



Broadway Ave to Yamhill Rd

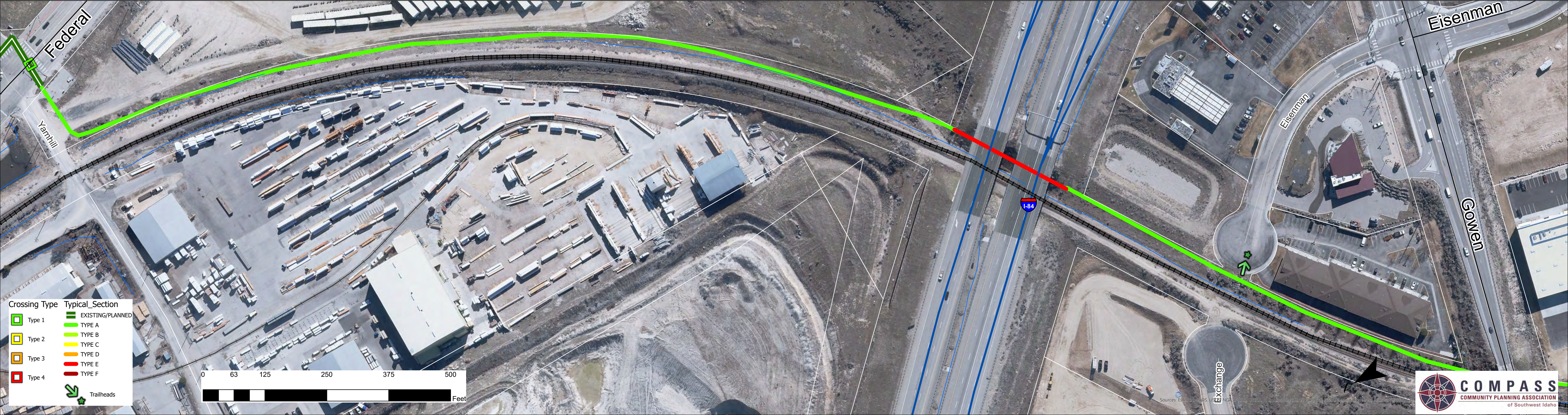


Crossing Type	Typical Section
Type 1	EXISTING/PLANNED
Type 2	TYPE A
Type 3	TYPE B
Type 4	TYPE C
	TYPE D
	TYPE E
	TYPE F
Trailheads	

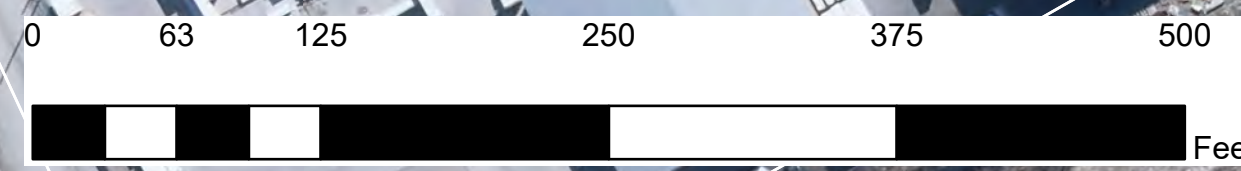


Sources: Esri, Airbus DS, USGS, NGA, NASA, CGIAR, IT Robinson, NCEAS, NLS, OS, NMA, Geodatastore.nl, Rijkswaterstaat, ©2024

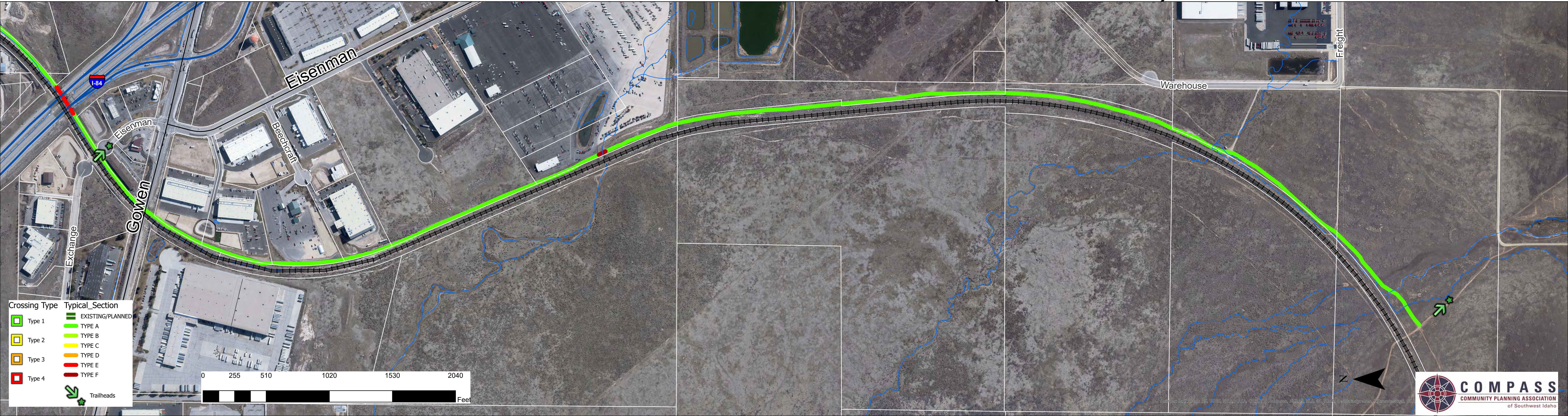
Yamhill Rd to Gowen Rd



Crossing Type	Typical Section
Type 1	EXISTING/PLANNED
Type 2	TYPE A
Type 3	TYPE B
Type 4	TYPE C
	TYPE D
	TYPE E
	TYPE F
	Trailheads



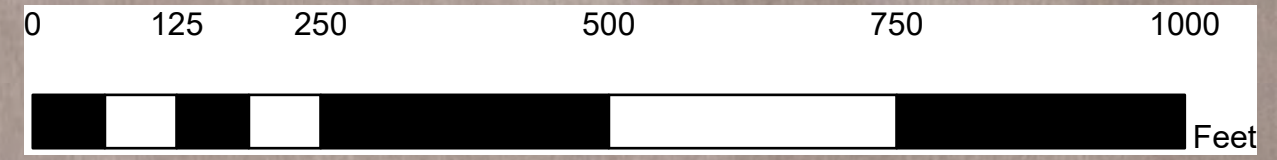
Gowen Rd to Eastern terminus (Lake Hazel ext)



McDermott Rd to Black Cat Rd

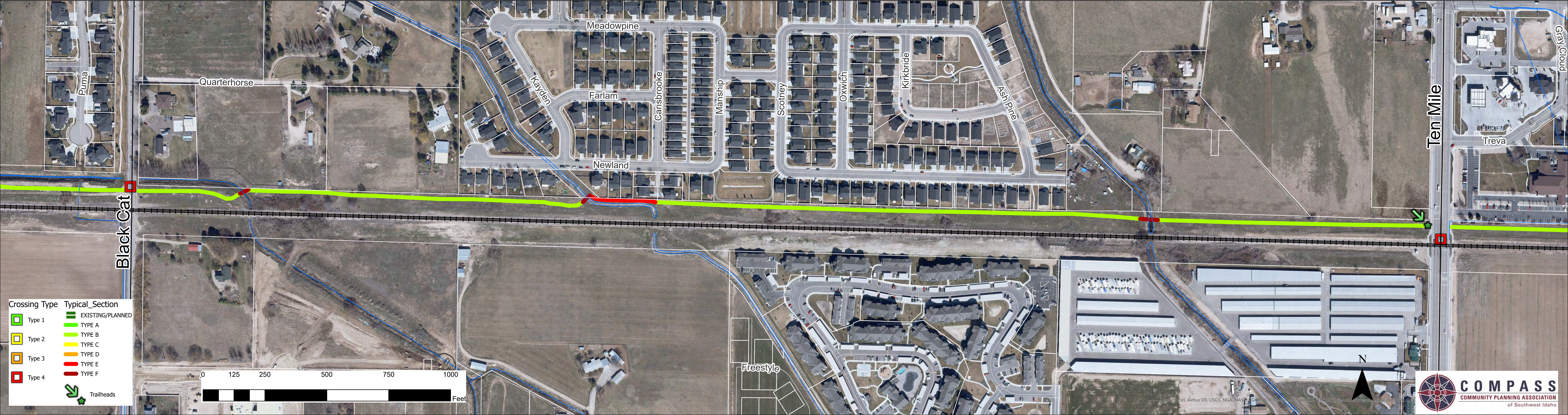


Crossing Type	Typical_Section
Type 1	EXISTING/PLANNED
Type 2	TYPE A
Type 3	TYPE B
Type 4	TYPE C
	TYPE D
	TYPE E
	TYPE F
	Trailheads

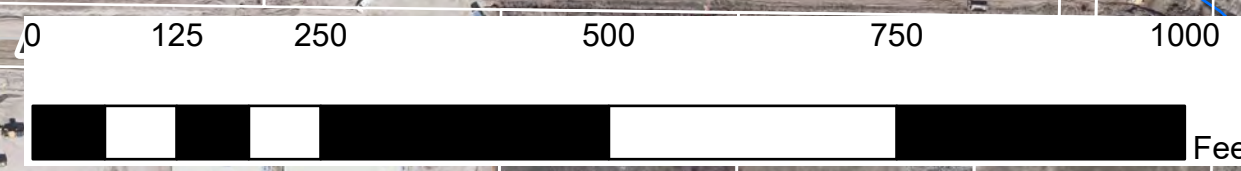


Sources: Esri, Airbus DS, USGS, NGA, NASA, CGIAR, N Robinson, NCCAS, NLS, OS, NMA, Geodatastyrelsen, Rijkswaterstaat, GSA

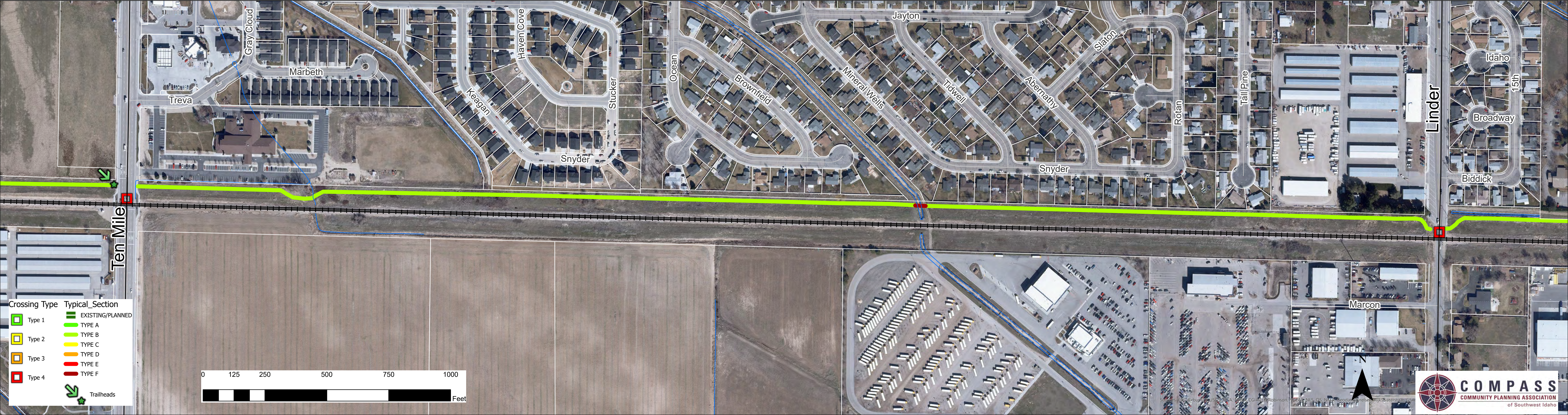
Black Cat Rd to Ten Mile Rd



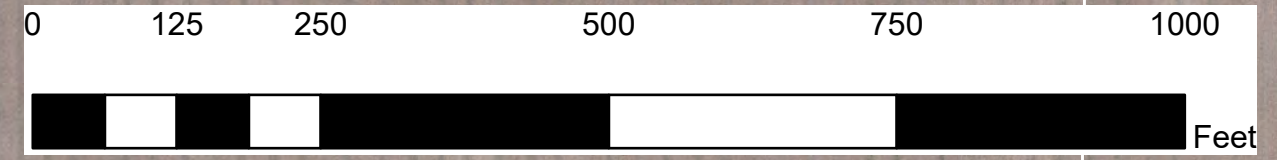
Crossing Type	Typical Section
Type 1	EXISTING/PLANNED
Type 2	TYPE A
Type 3	TYPE B
Type 4	TYPE C
	TYPE D
	TYPE E
	TYPE F
Trailheads	



Ten Mile Rd to Linder Rd



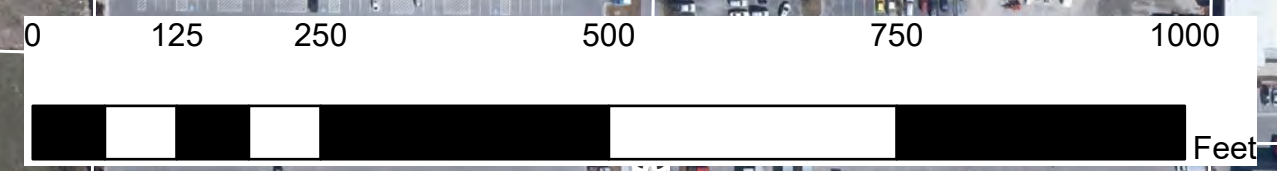
Crossing Type	Typical Section
Type 1	EXISTING/PLANNED
Type 2	TYPE A
Type 3	TYPE B
Type 4	TYPE C
	TYPE D
	TYPE E
	TYPE F
Trailheads	



Linder Rd to Meridian Rd



Crossing Type	Typical Section
Type 1	EXISTING/PLANNED
Type 2	TYPE A
Type 3	TYPE B
Type 4	TYPE C
	TYPE D
	TYPE E
	TYPE F
Trailheads	



Sources: Esri, Airbus DS, USGS, NGA, NASA, CGIAR, N Robinson, NCEAS, NLS, OS, NMA, Geodata by Geo, Kuy Waterstat, GSA

Meridian Rd to Locust Grove Rd



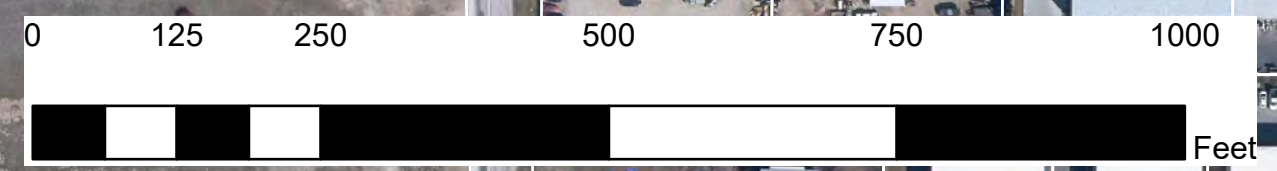
Crossing Type	Typical Section
Type 1	EXISTING/PLANNED
Type 2	TYPE A
Type 3	TYPE B
Type 4	TYPE C
	TYPE D
	TYPE E
	TYPE F
	Trailheads



Locust Grove Rd to Eagle Rd



Crossing Type	Typical Section
Type 1	EXISTING/PLANNED
Type 2	TYPE A
Type 3	TYPE B
Type 4	TYPE C
	TYPE D
	TYPE E
	TYPE F
	Trailheads

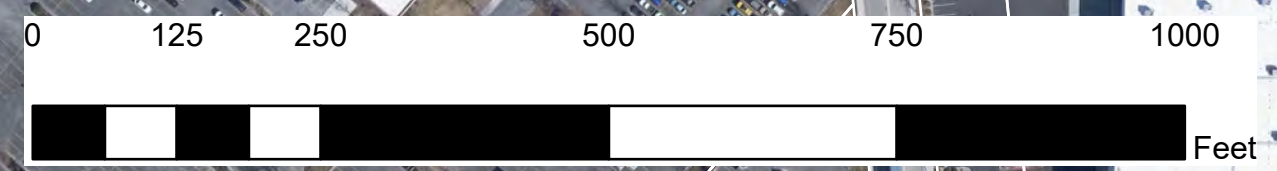


Source: Esri, Airbus DS, USGS, NOAA, NASA, GEBCO, N. Redburn, NCBAS, NLS, OS, NMA, Geodatasource, RLWIS, Swisstopo, Esri

Eagle Rd to Cloverdale Rd

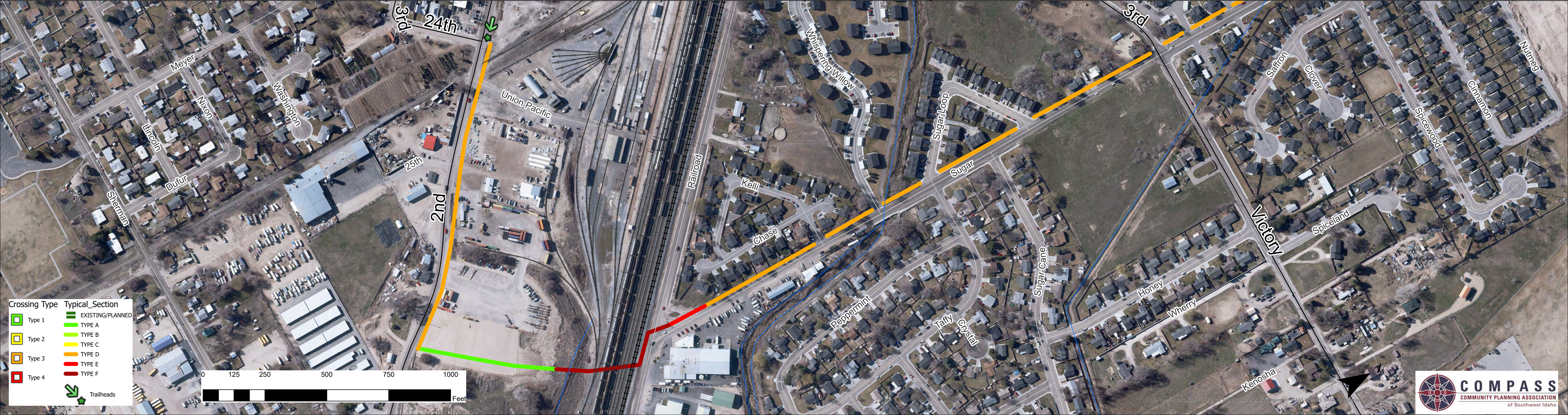


Crossing Type	Typical Section
Type 1	EXISTING/PLANNED
Type 2	TYPE A
Type 3	TYPE B
Type 4	TYPE C
	TYPE D
	TYPE E
	TYPE F
	Trailheads

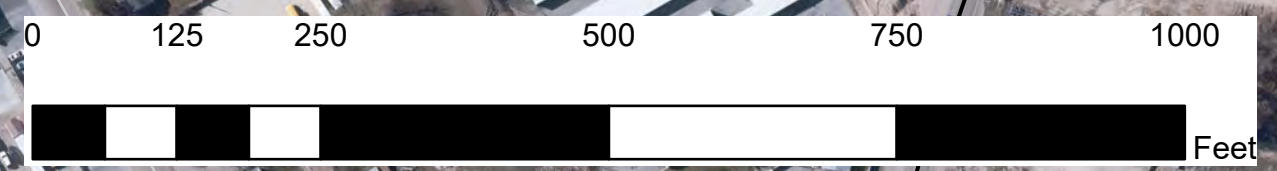


Sources: Esri, Garmin, GEBCO, NOAA, NGA, NASA, CCGAR, N, Robinson, NCEAS, NLS, OS, NMA, Geodatastyrelsen, Rijkswaterstaat, GSA,

Western terminus (2nd St) to Victory Rd

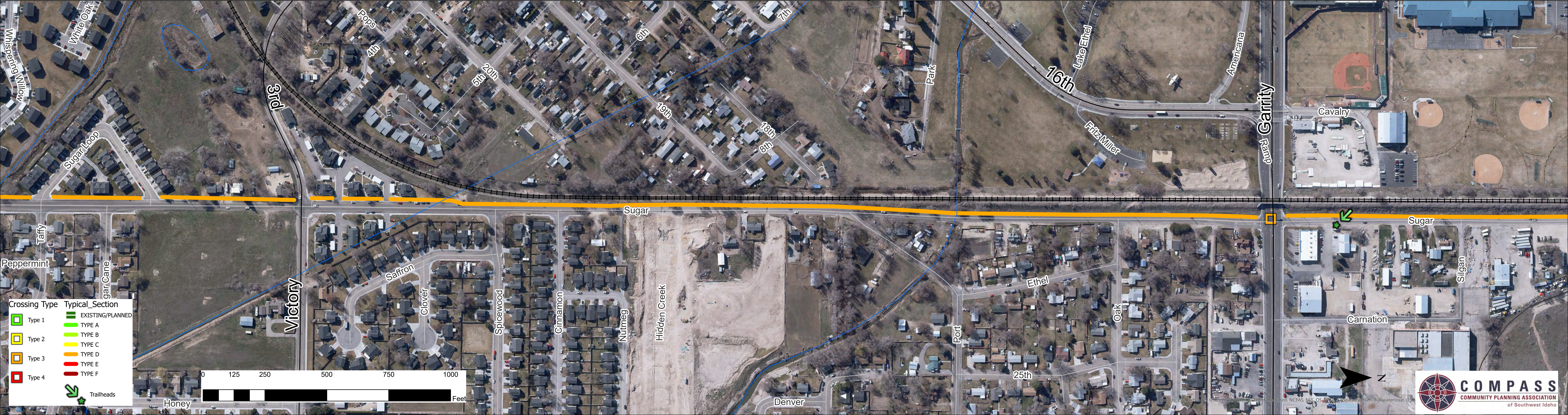


Crossing Type	Typical_Section
Type 1	EXISTING/PLANNED
Type 2	TYPE A
Type 3	TYPE B
Type 4	TYPE C
Trailheads	TYPE D
	TYPE E
	TYPE F

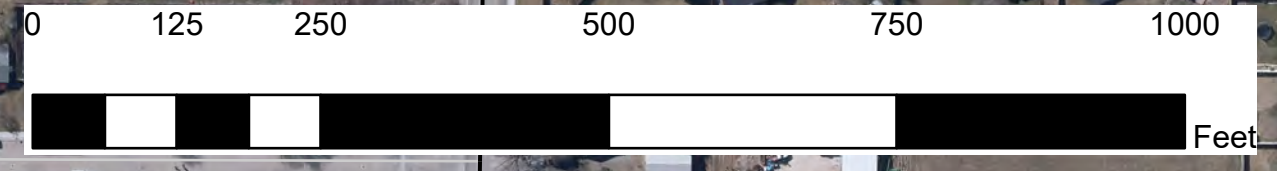


Source: Esri, Airbus DS, USGS, NOAA, NASA, CGIAR, N. Robinson, WFPAS, NLS, OS, NMA, Goodatystreton, Rikwaterstaat, GSA

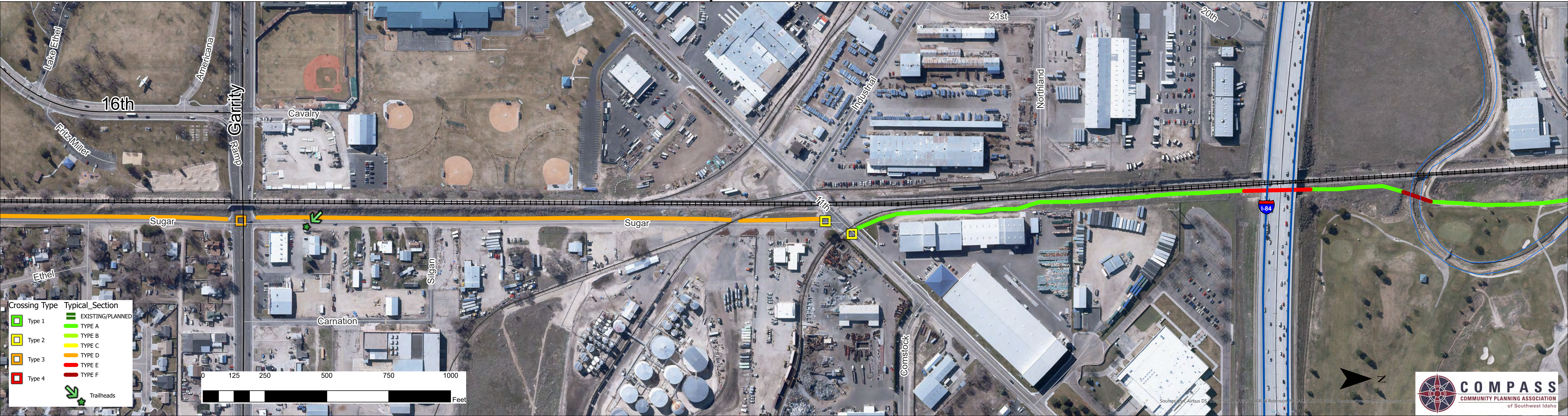
Victory Rd to Garrity Blvd



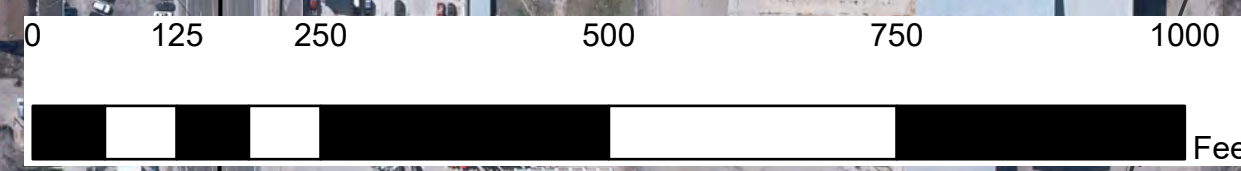
Crossing Type	Typical Section
Type 1	EXISTING/PLANNED
Type 2	TYPE A
Type 3	TYPE B
Type 4	TYPE C
Trailheads	TYPE D
	TYPE E
	TYPE F



Garrity Blvd to I-84



Crossing Type	Typical Section
Type 1	EXISTING/PLANNED
Type 2	TYPE A
Type 3	TYPE B
Type 4	TYPE C
Trailheads	TYPE D
	TYPE E
	TYPE F

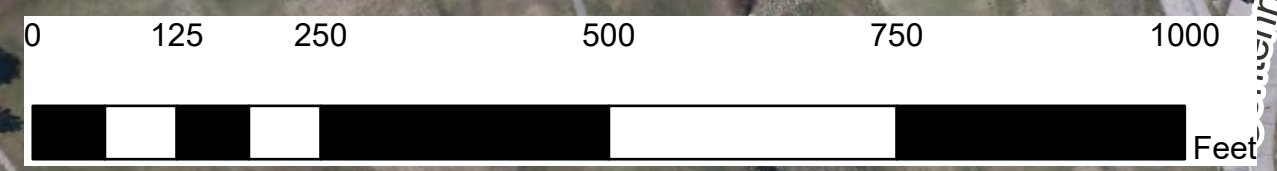


Source: Esri, Airbus DS, USGS, NOAA, NASA, CGAR, N Robinson, NCGAS, NLS, OS, NMA, Geodestry, Reson, RIKSwaterstat, GSA

I-84 to 11th Ave

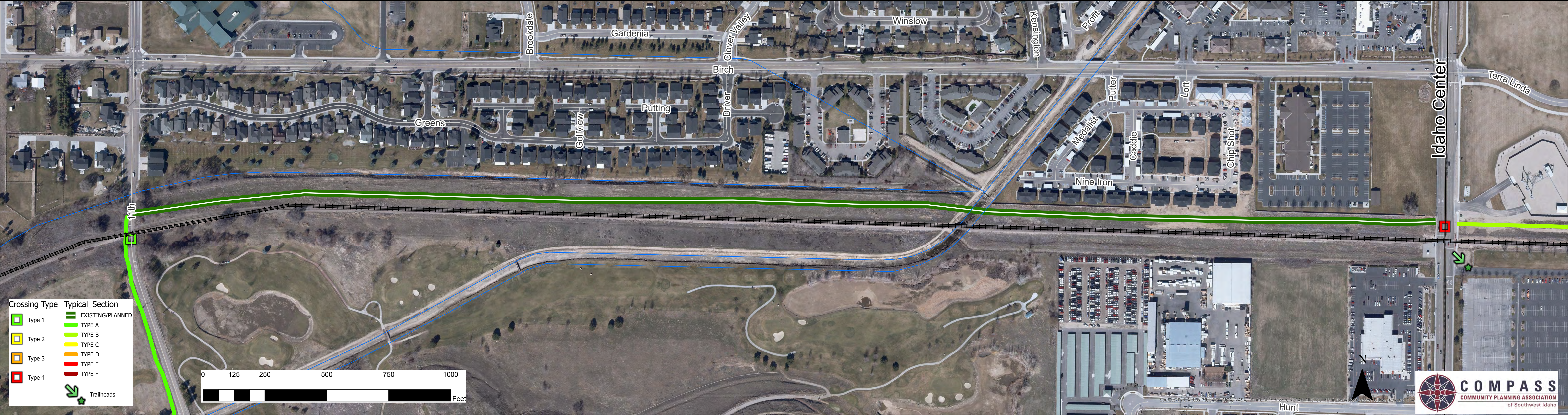


Crossing Type	Typical Section
Type 1	EXISTING/PLANNED
Type 2	TYPE A
Type 3	TYPE B
Type 4	TYPE C
	TYPE D
	TYPE E
	TYPE F
	Trailheads

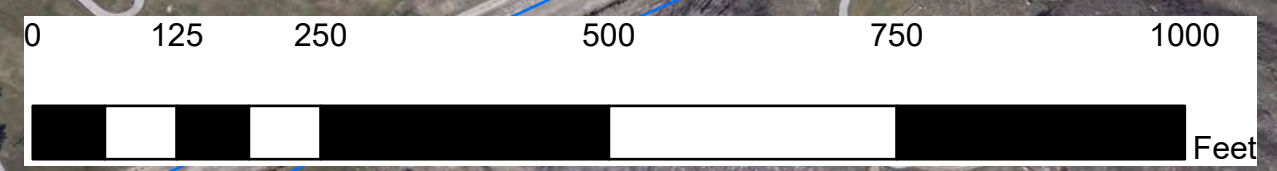


Source: Esri, Airphoto DS, USGS, NEA, NASA, NOAA, N. Robinson, NCEM, NLS, Co, NMA, Gooddata, reidson, Rll, waterat, GSA

11th Ave to Idaho Center Blvd



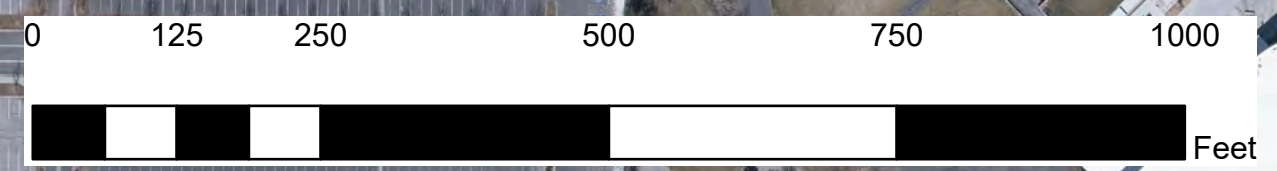
Crossing Type	Typical Section
Type 1	EXISTING/PLANNED
Type 2	TYPE A
Type 3	TYPE B
Type 4	TYPE C
	TYPE D
	TYPE E
	TYPE F
Trailheads	



Idaho Center Blvd to Star Rd



Crossing Type	Typical Section
Type 1	EXISTING/PLANNED
Type 2	TYPE A
Type 3	TYPE B
Type 4	TYPE C
Trailheads	TYPE D
	TYPE E
	TYPE F



Star Rd to McDermott Rd

