

# Communities in Motion 2040 2.0 Development Review

The Community Planning Association of Southwest Idaho (COMPASS) is the metropolitan planning organization (MPO) for Ada and Canyon Counties. COMPASS has developed this review as a tool for local governments to evaluate whether land developments are consistent with the goals of *Communities in Motion 2040 2.0* (CIM 2040), the regional long-range transportation plan for Ada and Canyon Counties. This checklist is not intended to be prescriptive, but rather a guidance document based on CIM 2040 2.0 goals.

**Development Name: Route 44 Crossing**






**Agency: Eagle**

**CIM Vision Category: Mixed Use**

**New households: 41**

**New jobs: ±90**

**Exceeds CIM forecast: No**

	<p>CIM Corridor: <b>State Highway 44</b>                  Pedestrian level of stress: <b>R</b>                  Bicycle level of stress: <b>R</b></p>	<p>Level of Stress considers facility type, number of vehicle lanes, and speed. Roads with <b>G or PG</b> ratings better support bicyclists and pedestrians of all ages and comfort levels.</p>
	<p>Housing within 1 mile: <b>1,220</b>                  Jobs within 1 mile: <b>600</b>                  Jobs/Housing Ratio: <b>0.5</b></p>	<p>A good jobs/housing balance – a ratio between <b>1 and 1.5</b> – reduces traffic congestion. Higher numbers indicate the need for more housing and lower numbers indicate an employment need.</p>
	<p>Nearest police station: <b>4 miles</b>                  Nearest fire station: <b>0.5 miles</b></p>	<p>Developments within <b>1.5 miles</b> of police and fire stations ensure that emergency services are more efficient and reduce the cost of these important public services.</p>
	<p>Farmland consumed: <b>Yes</b>                  Farmland within 1 mile: <b>591 acres</b></p>	<p>Farmland contributes to the local economy, creates additional jobs, and provides food security to the region. Development in farm areas decreases the productivity and sustainability of farmland.</p>
	<p>Nearest bus stop: <b>1.5 miles</b>                  Nearest public school: <b>1 mile</b>                  Nearest public park: <b>1.4 miles</b>                  Nearest grocery store: <b>3.9 miles</b></p>	<p>Residents who live or work less than <b>½ mile</b> from critical services have more transportation choices. Walking and biking reduces congestion by taking cars off the road, while supporting a healthy and active lifestyle.</p>

## Recommendations

This location is near two projects in the COMPASS Transportation Improvement Program (TIP):

- Linder Road, from Floating Feather Road to State Highway 44, is programmed to be widened to five lanes with curb, gutter, sidewalk, and bike lanes with construction scheduled for 2024 (Key 209-28).
- Highway 44 (State Street), from State Highway 16 to Linder Road, is programmed for widening from two to four travel lanes, with construction scheduled for 2023 (Key 20266). The proposal requests additional vehicle access to Highway 44, a state highway. Consider removing that access as additional access locations can reduce traffic flow and make additional conflict points for pedestrians and bicyclists.

More information about COMPASS and *Communities in Motion 2040 2.0*:

Web: [www.compassidaho.org](http://www.compassidaho.org)

Email [info@compassidaho.org](mailto:info@compassidaho.org)

More information about the development review process:

<http://www.compassidaho.org/dashboard/devreview.htm>



## Linder Road, Franklin Road to Pine Avenue, Meridian

Regionally Significant:   Inflated

Key #: RD213-16

Requesting Agency: ACHD

Project Year: 2020

Total Previous Expenditures: \$540

Total Programmed Cost: \$2,418

Total Cost (Prev. + Prog.): \$2,958

**Project Description :** Widen Linder Road between Franklin Road and Pine Avenue in the City of Meridian to five lanes, including curb, gutter, sidewalk, and bike lanes. Project includes upgrade of the railroad crossing and replacement and widening of a bridge structure.

**COMPASS PM:**

- Housing
- Transportation Safety
- Congestion Reduction/System Reliability
- Community Infrastructure

**Federal PM:**



Funding Source Local (Regionally Significant) Program Hwy - Local Partnerships								Local Match 100.00%	
Cost Year*	Preliminary Engineering	Preliminary Engineering Consulting	Right-of-Way	Utilities	Construction Engineering	Construction	Total	Federal Share	Local Share
2020	0	0	36	60	24	2,182	2,302	0	2,302
2021	0	0	0	0	3	113	116	0	116
<b>Fund Totals:</b>	<b>\$0</b>	<b>\$0</b>	<b>\$36</b>	<b>\$60</b>	<b>\$27</b>	<b>\$2,295</b>	<b>\$2,418</b>	<b>\$0</b>	<b>\$2,418</b>

## Linder Road, SH-44 (State Street) to Floating Feather Road, Eagle

Regionally Significant:   Inflated

Key #: RD209-28

Requesting Agency: ACHD

Project Year: 2024

Total Previous Expenditures: \$0

Total Programmed Cost: \$7,344

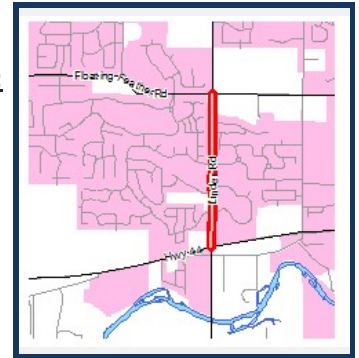
Total Cost (Prev. + Prog.): \$7,344

**Project Description :** Widen Linder Road from SH-44 (State Street) to Floating Feather Road in the City of Eagle to five lanes with curb, gutter, sidewalk, and bike lanes. Project includes construction of a multi-lane roundabout at Linder Road and Floating Feather Road (IN 217-03), two bridges, and an enhanced pedestrian crossing (pedestrian hybrid beacon) at Linder Road and Saguaro Drive.

**COMPASS PM:**

- Community Infrastructure
- Housing
- Congestion Reduction/System Reliability
- Transportation Safety

**Federal PM:**



Funding Source Local (Regionally Significant) Program Hwy - Non-Participating								Local Match 100.00%	
Cost Year*	Preliminary Engineering	Preliminary Engineering Consulting	Right-of-Way	Utilities	Construction Engineering	Construction	Total	Federal Share	Local Share
2021	0	465	6	0	0	0	471	0	471
2022	0	10	939	0	0	0	949	0	949
2024	0	0	0	0	0	5,924	5,924	0	5,924
<b>Fund Totals:</b>	<b>\$0</b>	<b>\$475</b>	<b>\$945</b>	<b>\$0</b>	<b>\$0</b>	<b>\$5,924</b>	<b>\$7,344</b>	<b>\$0</b>	<b>\$7,344</b>

\*PD = Preliminary Development (projects with development activity but no programmed year of construction)

## SH-44 (State Street) and SH-55 (Eagle Road) Intersection, 1/2 CFI, Eagle

Regionally Significant:   Inflated

Key #: 13476

Requesting Agency: ITD

Project Year: 2021

Total Previous Expenditures: \$1,376

Total Programmed Cost: \$7,013

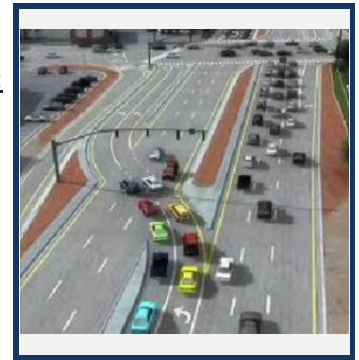
Total Cost (Prev. + Prog.): \$8,389

Project Description : Construct a partial (1/2) continuous flow intersection (CFI), including displaced left-turn lanes, at SH-44 (State Street) and SH-55 (Eagle Road) in the City of Eagle.

### COMPASS PM:

Congestion Reduction/System Reliability  
 Freight Movement and Economic Vitality  
 Transportation Safety  
 Community Infrastructure

### Federal PM:



Funding Source		Program							Local Match	
NHPP		State Hwy - Safety & Capacity (Capacity)							7.34%	
Cost Year*	Preliminary Engineering	Preliminary Engineering Consulting	Right-of-Way	Utilities	Construction Engineering	Construction	Total	Federal Share	Local Share	
2021	0	0	0	0	638	6,375	7,013	6,498	515	
<b>Fund Totals:</b>	<b>\$0</b>	<b>\$0</b>	<b>\$0</b>	<b>\$0</b>	<b>\$638</b>	<b>\$6,375</b>	<b>\$7,013</b>	<b>\$6,498</b>	<b>\$515</b>	

## SH-44 (State Street), SH-16 to Linder Road, Ada County

Regionally Significant:   Inflated

Key #: 20266

Requesting Agency: ITD

Project Year: 2023

Total Previous Expenditures: \$413

Total Programmed Cost: \$8,770

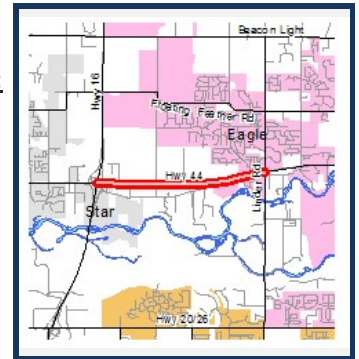
Total Cost (Prev. + Prog.): \$9,183

Project Description : Add an additional westbound and eastbound lane to improve congestion and reduce crashes along SH-44 (State Street) from SH-16 to Linder Road near the City of Eagle.

### COMPASS PM:

Congestion Reduction/System Reliability  
 Freight Movement and Economic Vitality  
 Transportation Safety  
 Community Infrastructure

### Federal PM:



Funding Source		Program							Local Match	
TECM		State Hwy - Safety & Capacity (Safety)							100.00%	
Cost Year*	Preliminary Engineering	Preliminary Engineering Consulting	Right-of-Way	Utilities	Construction Engineering	Construction	Total	Federal Share	Local Share	
2020	0	50	50	0	0	0	100	0	100	
2023	0	0	0	0	765	7,905	8,670	0	8,670	
<b>Fund Totals:</b>	<b>\$0</b>	<b>\$50</b>	<b>\$50</b>	<b>\$0</b>	<b>\$765</b>	<b>\$7,905</b>	<b>\$8,770</b>	<b>\$0</b>	<b>\$8,770</b>	

\*PD = Preliminary Development (projects with development activity but no programmed year of construction)