



TRANSMITTAL DATE: February 12, 2019

PLANNING AND ZONING COMMISSION MEETING DATE: April 1, 2019

APPLICATION NUMBER: CU-02-19/PPUD-02-19/PP-02-19

PROJECT DESCRIPTION: Snoqualmie River Subdivision No. 4

APPLICANT:

White Sturgeon, LLC
Justin Martin
6401 West Floating Feather Road
Eagle, Idaho 83616
208-890-0451
Email: justin@legacyidaho.com

REPRESENTATIVE:

T-O Engineers
Caleb LaClair, P.E.
332 North Broadmore Way
Nampa, Idaho 83687
208-442-6300
Email: claclair@to-engineers.com

SUBJECT: CU-02-19/PPUD-02-19/PP-02-19 – Snoqualmie River Subdivision No. 4 – White Sturgeon, LLC: White Sturgeon, LLC, represented by Caleb LaClair, P.E., with T-O Engineers, is requesting conditional use permit, preliminary development plan, and preliminary plat approvals for Snoqualmie River Subdivision No. 4, a 73-lot (68-buildable, 8-common) residential planned unit development. The 37.57-acre site is located on the west side of North Palmer Lane approximately 315-feet south of the intersection of North Palmer Lane and West Floating Feather Road.

STAFF CONTACT: Michael Williams, CFM Planner III mwilliams@cityofeagle.org

The City of Eagle is reviewing the above mentioned application. If you have any comments on the proposed development please notify the City of Eagle in writing within 15 days of the transmittal date noted above. If no response is received, you will be considered as having no specific concerns regarding this item.

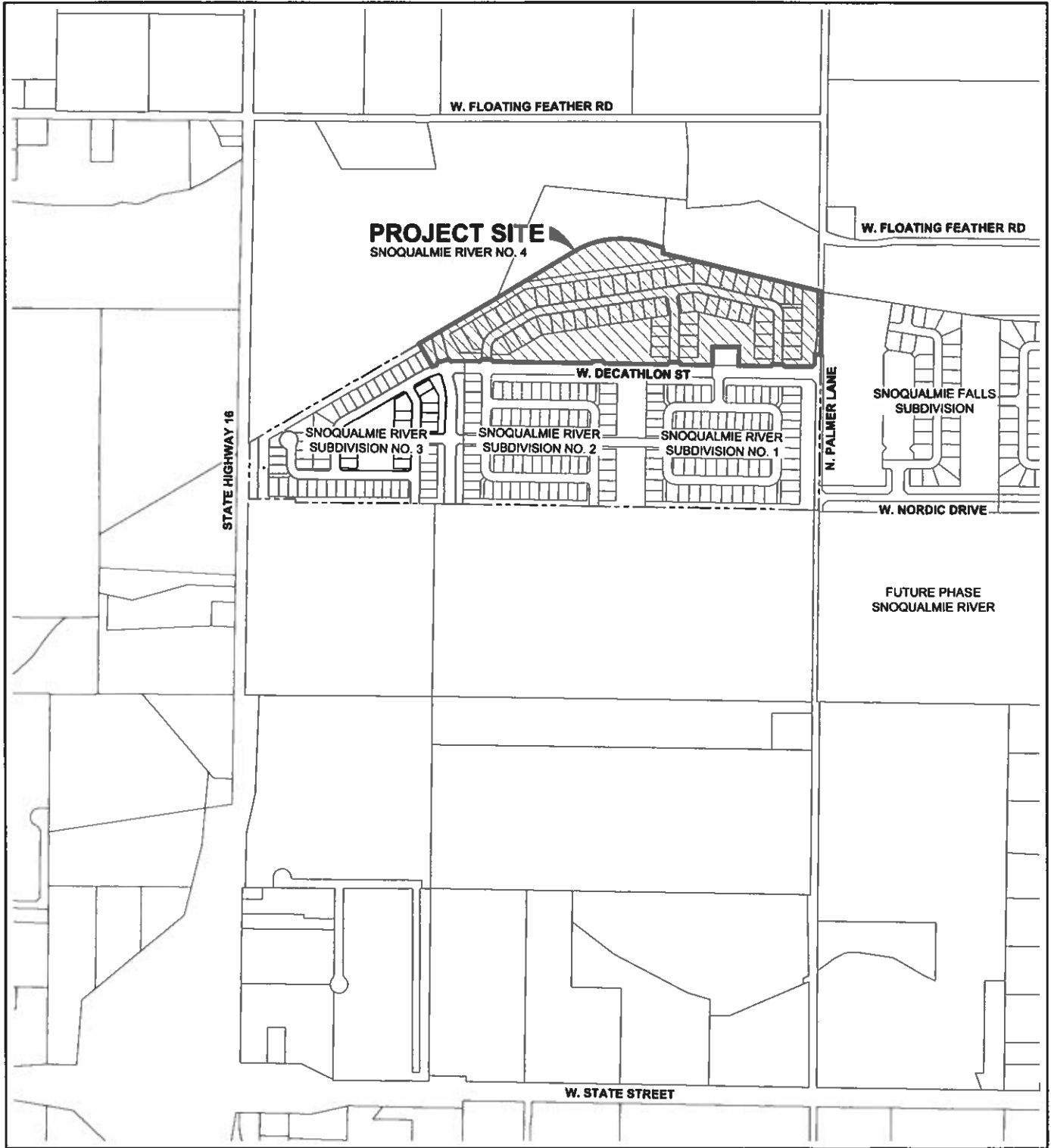
TRANSMITTED TO:

Ada County Assessor
Ada County Development Services - Attn: **Jason Boal**
Ada County Highway District - Attn: **Planning Review**
Andeavor
Ballentyne Ditch Company - Attn: **S. Bryce Farris**
Ballentyne West Lateral User’s Assoc. - **Tim Fease**
Boise River Flood Control District No. 10
Boise School District - Attn: **Lanette Daw**
Cable One
Central District Health Department
CenturyLink – Attn: **Cindi Davis & Leo Arteaga**
City of Eagle Park, Pathway & Recreation - Attn: **Tim Williams**
City of Eagle Trails Coordinator – Attn: **Steve Noyes**
City of Eagle Police (ACSO) - Attn: **Chief Patrick Calley**
City of Eagle Water Dept. - Attn: **Ken Acuff**
COMPASS
DEQ - Attn: **Alicia Martin**
Drainage District #2 - Attn: **S. Bryce Farris**
Eagle Historic Preservation Commission
Eagle Fire Department - Attn: **Kurt McClenny**
Eagle Water Co.
Eagle Sewer District - Attn: **Lynn Moser**

Farmers Union Ditch Co. Inc. - Attn: **Jerry A. Kiser**
Idaho Dept. of Fish & Game - Southwest Region
Idaho Department of Lands
Idaho Power - Attn: **Blake Watson**
ITD - Attn.: **Ken Couch**
Land Trust of the Treasure Valley - Attn: **Tim M. Breuer**
Meridian Fire Department - Attn: **Joe Bongiorno**
Middleton Irrigation Ditch Company - Attn: **S. Bryce Farris**
Middleton Mill Ditch Company - Attn: **S. Bryce Farris**
New Dry Creek Ditch Co. - Attn: **Ron Sedlacek**
New Union Ditch Co. - Attn: **Gary Heikes**
Republic Services – Attn: **Richard Scott and Gary Packwood**
Settler’s Irrigation - Attn: **S. Bryce Farris**
Star Fire District - Attn: **Greg Timinsky**
United States Army Corps of Engineers
Suez - Attn: **Cathy Cooper**
United States Postal Service: Attn: **Ronald Saenz**
Valley Regional Transit
West Ada School District – Attn: **Joe Yochum**

SNOQUALMIE RIVER SUBDIVISION NO. 4

OVERALL VICINITY MAP



T-O ENGINEERS

332 N. BROADMORE WAY
NAMPA, IDAHO 83687-5123

PHONE: (208) 442-6300

FAX: (208) 466-0944

E-FILE: 180494-C-VM Vicinity Map.dwg

DATE: 1/9/19

JOB: 180306

L:\180494\3_Acaddwg\Sheets\Preliminary\Platt\180494-C-VM Vicinity Map.dwg, 1/9/2019 11:13:47 AM, Kevin Heck, DWG To PDF.pc3
© 2018 T-O ENGINEERS. THIS INSTRUMENT IS THE PROPERTY OF T-O ENGINEERS. ANY REPRODUCTION, REUSE OR MODIFICATION OF THIS INSTRUMENT OR ITS CONTENTS WITHOUT SPECIFIC WRITTEN PERMISSION OF T-O ENGINEERS IS STRICTLY PROHIBITED.

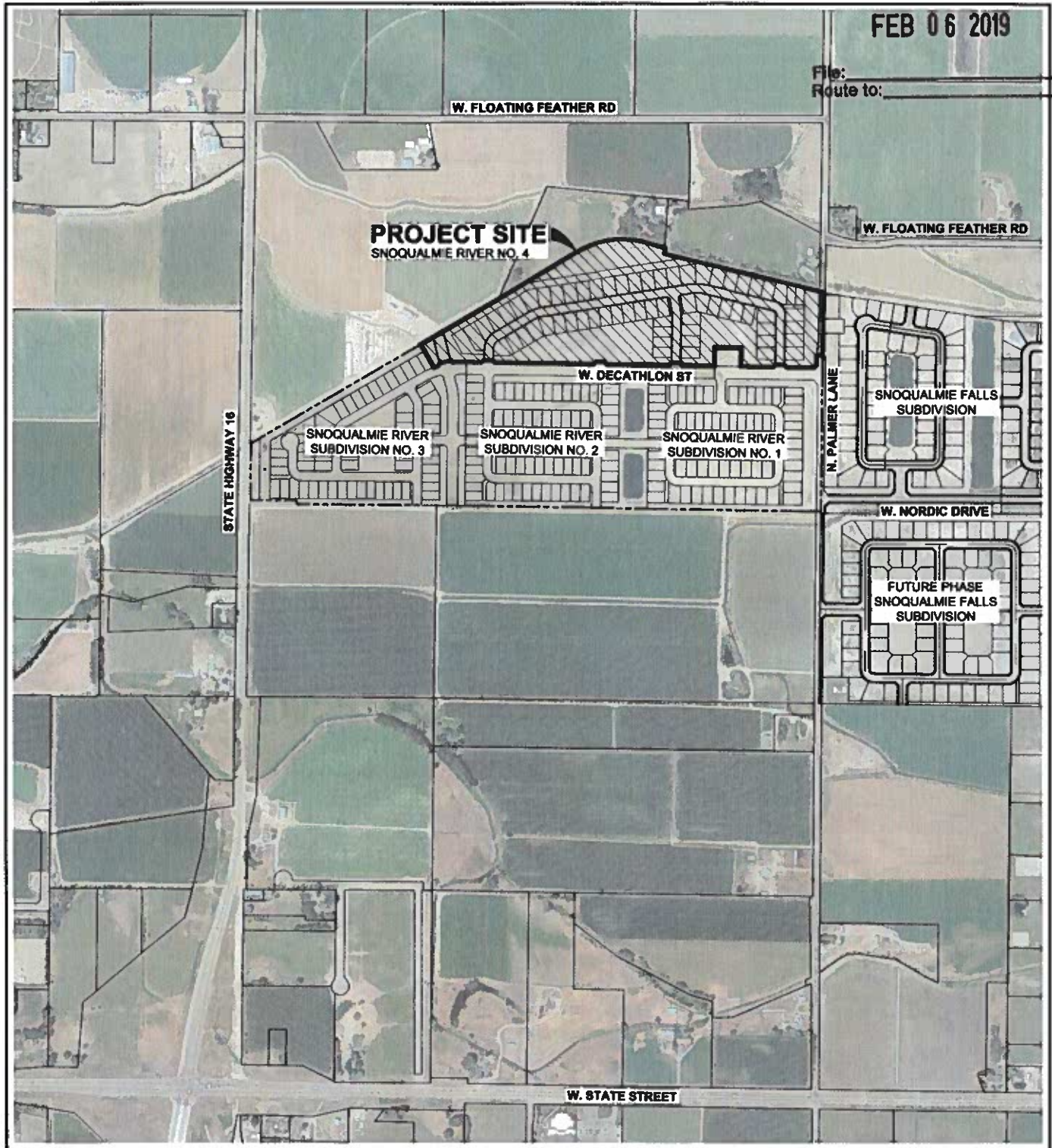
SNOQUALMIE RIVER SUBDIVISION NO. 4

AERIAL PHOTO MAP EXHIBIT

RECEIVED & FILED
CITY OF EAGLE

FEB 06 2019

File:
Route to:



T-O ENGINEERS

332 N. BROADMORE WAY
NAMPA, IDAHO 83687-5123

PHONE: (208) 442-6300

FAX: (208) 466-0944

E-FILE: 180494-C-VM Vicinity Map.dwg

DATE: 1/9/19

JOB: 180494

L:\180494\3_Acad\dwg\Sheets\Preliminary\Platt\180494-C-VM Vicinity Map.dwg, 1/29/2019 1:14:46 PM, Kevin Heck, DWG To PDF.pc3
© 2018 T-O ENGINEERS. THIS INSTRUMENT IS THE PROPERTY OF T-O ENGINEERS. ANY REPRODUCTION, REUSE OR MODIFICATION OF THIS INSTRUMENT OR ITS CONTENTS WITHOUT SPECIFIC WRITTEN PERMISSION OF T-O ENGINEERS IS STRICTLY PROHIBITED.

