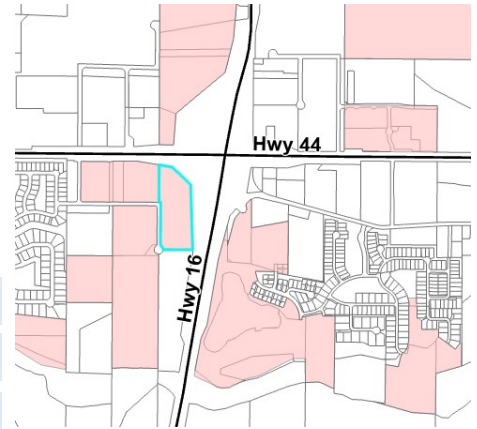


Communities in Motion 2050 Development Checklist

The Community Planning Association of Southwest Idaho (COMPASS) is the metropolitan planning organization (MPO) for Ada and Canyon Counties. COMPASS has developed this review as a tool for local governments to evaluate whether land developments are consistent with the goals of Communities in Motion 2050 (CIM 2050), the regional long-range transportation plan for Ada and Canyon Counties. This checklist is not intended to be prescriptive, but rather a guidance document based on CIM 2050 goals.



Development Name: Star Crest Business Park Rezone
CIM Vision Category: Future Neighborhood **New Jobs:** ±165
CIM Corridor: State Highway 44/State Street **New Households:** 0



Safety

Level of Stress measures how safe and comfortable a bicyclist or pedestrian would feel on a corridor and considers multimodal infrastructure number of vehicle lanes and travel speeds.

Pedestrian level of stress
 Bicycle level of stress



Economic Vitality

These tools evaluate whether the location of the proposal supports economic vitality by growing near existing public services.

Activity Center Access
 Farmland Preservation
 Net Fiscal Impact
 Within CIM Forecast



Convenience

Residents who live or work less than 1/2 mile from critical services have more transportation choices, especially for vulnerable populations

Nearest bus stop
 Nearest public school
 Nearest public park



Quality of Life

Checked boxes indicate that additional information is attached.

Active Transportation
 Automobile Transportation
 Public Transportation
 Roadway Capacity



Improves performance



Does not improve or reduce performance



Reduces performance

Comments:

The [Star 2011 Downtown Revitalization Plan](#) shows the “Star Canal Trail” running along the Pioneer and Lawrence Kennedy Canals. Consider extending the Star Canal Trail by providing a pathway along the Pioneer Canal that connects to West Wildbranch Drive. Also, the [COMPASS FY2022 – FY2028 Transportation Improvement Program](#) shows numerous roadway improvements in this area (see Key #'s 2066 and 23408 for more information).

Communities in Motion 2050
[2020 Change in Motion Report](#)
[Development Review Process](#)

Web: www.compassidaho.org
 Email: info@compassidaho.org



SH-44 (State Street), SH-16 to Linder Road, Ada County

Regionally Significant: Inflated **TIP Achievement:**
 Key #: 20266 System Performance
 Requesting Agency: ITD Safety
 Project Year: 2023
 Total Previous Allocations: \$553
 Total Programmed Budget: \$8,670
 Total Cost (Prev. + Prog.): \$9,223



Project Description

Add an additional westbound and eastbound lane to improve congestion and reduce crashes along State Highway 44 (State Street), from State Highway 16 to Linder Road near the City of Eagle.

Funding Source			Program					Local Match	
TECM			State Hwy - Safety & Capacity (Capacity)					100.00%	
Cost Year*	Preliminary Engineering	Preliminary Engineering Consulting	Right-of-Way	Utilities	Construction Engineering	Construction	Total	Federal Share	Local Share
2023	0	0	0	0	765	7,905	8,670	0	8,670
Fund Totals:	\$0	\$0	\$0	\$0	\$765	\$7,905	\$8,670	\$0	\$8,670

SH-16, Ustick Road to US 20/26 and SH-44, Ada County

Regionally Significant: Inflated **TIP Achievement:**
 Key #: 23408 System Performance
 Requesting Agency: ITD
 Project Year: 2022
 Total Previous Allocations: \$0
 Total Programmed Budget: \$55,500
 Total Cost (Prev. + Prog.): \$55,500



Project Description

Construct new segment of State Highway 16 from Ustick Road to US 20/26 in the City of Meridian and Ada County. The roadway will include two lanes in each direction with on and off ramps at Ustick Road and US 20/26. Work also includes an overpass at McMillan Road, several local roads to connect to the roadway system, and irrigation structures. Design and right-of-way budgeted in separate, previous project (KN 20788).

Funding Source			Program					Local Match	
TECM			State Hwy - Safety & Capacity (Capacity)					100.00%	
Cost Year*	Preliminary Engineering	Preliminary Engineering Consulting	Right-of-Way	Utilities	Construction Engineering	Construction	Total	Federal Share	Local Share
2022	0	0	0	0	5,500	50,000	55,500	0	55,500
Fund Totals:	\$0	\$0	\$0	\$0	\$5,500	\$50,000	\$55,500	\$0	\$55,500

Fiscal Impact Analysis Supplemental for the Development Review Checklist

The purpose of the fiscal impact analysis is to better estimate expected revenues and costs to local governments as a result of new development so that the public, stakeholders, and the decision-makers can better manage growth. Capital and operating expenditures are determined by various factors that determine service and infrastructure needs, including persons per household, student generation rates, lot sizes, street frontages, vehicle trip and trip adjustment factors, average trip lengths, construction values, income, discretionary spending, and employment densities.

The COMPASS Development Checklist considers the level of fiscal benefits, how many public agencies benefit or are burdened by additional growth, and how long the proposal will take to achieve a fiscal break-even point, if at all.

More information about the COMPASS Fiscal Impact Tool is available at:

www.compassidaho.org/prodserv/fiscalimpact.htm

Overall Net Fiscal Impact Net Fiscal Impact by Agency



City



County



Highway District



School District

Break Even: Doesn't Break Even