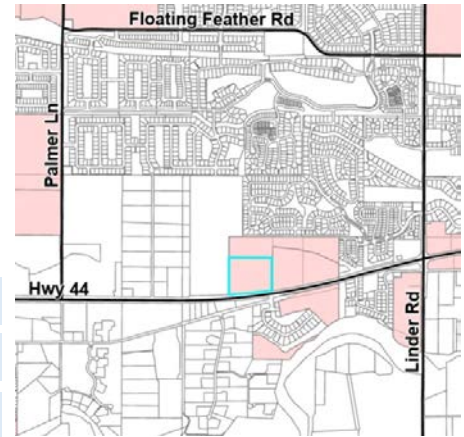


# Communities in Motion 2050 Development Checklist

The Community Planning Association of Southwest Idaho (COMPASS) is the metropolitan planning organization (MPO) for Ada and Canyon Counties. COMPASS has developed this review as a tool for local governments to evaluate whether land developments are consistent with the goals of Communities in Motion 2050 (CIM 2050), the regional long-range transportation plan for Ada and Canyon Counties. This checklist is not intended to be prescriptive, but rather a guidance document based on CIM 2050 goals.



**Development Name:** Tierpoint Subdivision  
**CIM Vision Category:** Existing Neighborhood **New Jobs:** 0  
**CIM Corridor:** None **New Households:** 66



## Safety

Level of Stress measures how safe and comfortable a bicyclist or pedestrian would feel on a corridor and considers multimodal infrastructure number of vehicle lanes and travel speeds.

- Pedestrian level of stress
- Bicycle level of stress



## Economic Vitality

These tools evaluate whether the location of the proposal supports economic vitality by growing near existing public services.

- Activity Center Access
- Farmland Preservation
- Net Fiscal Impact N/A
- Within CIM Forecast



## Convenience

Residents who live or work less than 1/2 mile from critical services have more transportation choices, especially for vulnerable populations

- Nearest bus stop
- Nearest public school
- Nearest public park



## Quality of Life

Checked boxes indicate that additional information is attached.

- Active Transportation
- Automobile Transportation
- Public Transportation
- Roadway Capacity



Improves performance



Does not improve or reduce performance



Reduces performance

### Comments:

Based on the site plan provided, COMPASS has no comments.

**Communities in Motion 2050**  
[2020 Change in Motion Report](#)  
[Development Review Process](#)

Web: [www.compassidaho.org](http://www.compassidaho.org)  
 Email: [info@compassidaho.org](mailto:info@compassidaho.org)

