

FY2022-2028 Regional Transportation Improvement Program

Detailed Project List (All Values in Thousands of Dollars)

All costs in current dollars



10th Avenue ITS and Overlay, Caldwell

Regionally Significant:

Key #: 13905

Requesting Agency: City of Caldwell

Project Year: 2026

Total Previous Expenditures: \$248

Total Programmed Cost: \$1,993

Total Cost (Prev. + Prog.): \$2,241

Project Description : Overlay a one-half mile section of 10th Avenue in downtown Caldwell from the railroad overpass to Interstate 84. Install intelligent transportation system (ITS) components and bring pedestrian facilities to current standards.

COMPASS PM:

- Maintenance
- Freight Movement and Economic Vitality
- Environmental Sustainability
- Land Use
- Community Infrastructure

Federal PM:



Funding Source		STBG-U		Program				Local Hwy - Urban		Local Match 7.34%	
Cost Year*	Preliminary Engineering	Preliminary Engineering Consulting	Right-of-Way	Utilities	Construction Engineering	Construction	Total	Federal Share	Local Share		
2026	0	0	0	0	157	1,836	1,993	1,847	146		
Fund Totals:	\$0	\$0	\$0	\$0	\$157	\$1,836	\$1,993	\$1,847	\$146		

ADA Ramps, Greenleaf

Regionally Significant:

Key #: 22963

Requesting Agency: City of Greenleaf

Project Year: 2022

Total Previous Expenditures: \$0

Total Programmed Cost: \$58

Total Cost (Prev. + Prog.): \$58

Project Description : Construct eight wheelchair accessible sidewalk ramps in the City of Greenleaf. Ramps will conform to Americans with Disabilities Act (ADA) regulations.

COMPASS PM:

- Transportation Safety

Federal PM:



Funding Source		State		Program				State Hwy - System Support		Local Match 100.00%	
Cost Year*	Preliminary Engineering	Preliminary Engineering Consulting	Right-of-Way	Utilities	Construction Engineering	Construction	Total	Federal Share	Local Share		
2022	0	0	0	0	0	58	58	0	58		
Fund Totals:	\$0	\$0	\$0	\$0	\$0	\$58	\$58	\$0	\$58		

*PD = Preliminary Development (projects with development activity but no programmed year of construction)

Bicycle and Pedestrian Bridge over North Channel of Boise River, Eagle

Regionally Significant:

Key #: 20841

Requesting Agency: City of Eagle

Project Year: 2023

Total Previous Expenditures: \$702

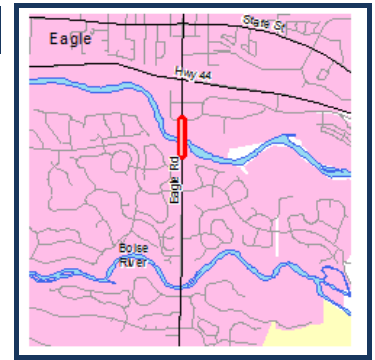
Total Programmed Cost: \$3,260

Total Cost (Prev. + Prog.): \$3,962

COMPASS PM:

- Community Infrastructure
- Health
- Open Space
- Transportation Safety
- Land Use

Federal PM:



Project Description : Design and construct a bicycle and pedestrian bridge over the north channel of the Boise River adjacent to the State Highway 55 (Eagle Road) Bridge. The bicycle and pedestrian bridge will provide critical link between the Boise River Greenbelt, planned pathways, and a rapidly growing residential and commercial core area in the City of Eagle.

Funding Source TAP-TMA			Program Local Hwy - Transportation Alternatives					Local Match 7.34%	
Cost Year*	Preliminary Engineering	Preliminary Engineering Consulting	Right-of-Way	Utilities	Construction Engineering	Construction	Total	Federal Share	Local Share
2022	0	80	0	0	0	0	80	74	6
2023	0	0	0	0	0	38	38	35	3
Fund Totals:	\$0	\$80	\$0	\$0	\$0	\$38	\$118	\$109	\$9

Funding Source Local Participating			Program Hwy - Local Partnerships					Local Match 100.00%	
Cost Year*	Preliminary Engineering	Preliminary Engineering Consulting	Right-of-Way	Utilities	Construction Engineering	Construction	Total	Federal Share	Local Share
2023	0	0	0	0	123	789	912	0	912
Fund Totals:	\$0	\$0	\$0	\$0	\$123	\$789	\$912	\$0	\$912

Funding Source TAP-State			Program Local Hwy - Transportation Alternatives					Local Match 7.34%	
Cost Year*	Preliminary Engineering	Preliminary Engineering Consulting	Right-of-Way	Utilities	Construction Engineering	Construction	Total	Federal Share	Local Share
2023	0	0	0	0	0	537	537	498	39
Fund Totals:	\$0	\$0	\$0	\$0	\$0	\$537	\$537	\$498	\$39

Funding Source STBG-TMA			Program Local Hwy - Transportation Management Area					Local Match 7.34%	
Cost Year*	Preliminary Engineering	Preliminary Engineering Consulting	Right-of-Way	Utilities	Construction Engineering	Construction	Total	Federal Share	Local Share
2023	0	0	0	0	0	1,693	1,693	1,569	124
Fund Totals:	\$0	\$0	\$0	\$0	\$0	\$1,693	\$1,693	\$1,569	\$124

*PD = Preliminary Development (projects with development activity but no programmed year of construction)

Bicycle and Pedestrian, Permanent Automated Counters, COMPASS

Regionally Significant:

COMPASS PM:

Federal PM:

Key #: 23026

Support

Requesting Agency: COMPASS

Project Year: 2023

Total Previous Expenditures: \$0

Total Programmed Cost: \$39

Total Cost (Prev. + Prog.): \$39

Project Description : Purchase up to five permanent automated bicycle and pedestrian counters in the Nampa Urbanized Area. Locations to be recommended by the COMPASS Active Transportation Workgroup.



Funding Source		STBG-U					Program		Local Hwy - Urban		Local Match 7.34%	
Cost Year*	Preliminary Engineering	Preliminary Engineering Consulting	Right-of-Way	Utilities	Construction Engineering	Construction	Total	Federal Share	Local Share			
2023	0	0	0	0	0	39	39	36	3			
Fund Totals:	\$0	\$0	\$0	\$0	\$0	\$39	\$39	\$36	\$3			

Bicycle and Pedestrian, Permanent Automated Counters, COMPASS

Regionally Significant:

COMPASS PM:

Federal PM:

Key #: NEW7

Requesting Agency: COMPASS

Project Year: 2026

Total Previous Expenditures: \$0

Total Programmed Cost: \$8

Total Cost (Prev. + Prog.): \$8

Project Description : Purchase one permanent bicycle and pedestrian counter with data processing to further expand the regional county effort in the Boise Urbanized Area. Location to be recommended by the COMPASS Active Transportation Workgroup.



Funding Source		STBG-TMA					Program		Local Hwy - Transportation Management Area		Local Match 7.34%	
Cost Year*	Preliminary Engineering	Preliminary Engineering Consulting	Right-of-Way	Utilities	Construction Engineering	Construction	Total	Federal Share	Local Share			
2026	0	0	0	0	0	8	8	7	1			
Fund Totals:	\$0	\$0	\$0	\$0	\$0	\$8	\$8	\$7	\$1			

Capital Maintenance, Phase 2, Boise Area – FY2021

Regionally Significant:

COMPASS PM:

Federal PM:

Key #: 20129

Maintenance

Requesting Agency: ACHD

Project Year: 2021-2022

Total Previous Expenditures: \$2,918

Total Programmed Cost: \$473

Total Cost (Prev. + Prog.): \$3,391

Project Description : Supplement the local pavement preservation program to complete pavement improvements on federal-aid roadways in the Boise Urbanized Area. Work includes improvements to adjoining sidewalks to meet Americans with Disabilities Act (ADA) requirements. Segments include: Warm Springs Avenue, Starcrest Drive to Starview Drive and Glacier Drive to State Highway 21; and Edna Street, Five Mile Road to Patton Avenue.



Funding Source		STBG-TMA		Program				Local Hwy - Transportation Management Area		Local Match 7.34%	
Cost Year*	Preliminary Engineering	Preliminary Engineering Consulting	Right-of-Way	Utilities	Construction Engineering	Construction	Total	Federal Share	Local Share		
2022	0	0	0	0	0	473	473	438	35		
Fund Totals:	\$0	\$0	\$0	\$0	\$0	\$473	\$473	\$438	\$35		

Centennial Way Roundabout, Caldwell

Regionally Significant:

COMPASS PM:

Federal PM:

Key #: 13484

Freight Movement and Economic Vitality
Transportation Safety
Housing
Congestion Reduction/System Reliability
Community Infrastructure

Requesting Agency: City of Caldwell

Project Year: 2023

Total Previous Expenditures: \$428

Total Programmed Cost: \$3,628

Total Cost (Prev. + Prog.): \$4,056

Project Description : Replace a six-legged intersection at State Highway 19 (Simplot Boulevard) and Interstate 84-B (Centennial Way, Cleveland Boulevard, and Blaine Street) with a roundabout intersection in the City of Caldwell.



Funding Source		STBG-U		Program				Local Hwy - Urban		Local Match 7.34%	
Cost Year*	Preliminary Engineering	Preliminary Engineering Consulting	Right-of-Way	Utilities	Construction Engineering	Construction	Total	Federal Share	Local Share		
2023	0	0	0	0	485	2,531	3,016	2,795	221		
Fund Totals:	\$0	\$0	\$0	\$0	\$485	\$2,531	\$3,016	\$2,795	\$221		

Funding Source		STBG-State		Program				State Hwy - Pavement Preservation		Local Match 7.34%	
Cost Year*	Preliminary Engineering	Preliminary Engineering Consulting	Right-of-Way	Utilities	Construction Engineering	Construction	Total	Federal Share	Local Share		
2023	0	0	0	0	0	612	612	567	45		
Fund Totals:	\$0	\$0	\$0	\$0	\$0	\$612	\$612	\$567	\$45		

*PD = Preliminary Development (projects with development activity but no programmed year of construction)

Cherry Lane, 11th Avenue North to Idaho Center Boulevard, Nampa

Regionally Significant:

Key #: 22438

Requesting Agency: City of Nampa

Project Year: PD

Total Previous Expenditures: \$0

Total Programmed Cost: \$1,343

Total Cost (Prev. + Prog.): \$1,343

Project Description : Rebuild Cherry Lane between 11th Avenue North and Idaho Center Boulevard in the City of Nampa. Work includes adding a center turn lane, pedestrian and bicycle lanes, and intersection improvements.

COMPASS PM:

Maintenance
 Transportation Safety
 Health
 Congestion Reduction/System Reliability

Federal PM:



Funding Source		STBG-U		Program			Local Hwy - Urban		Local Match 7.34%	
Cost Year*	Preliminary Engineering	Preliminary Engineering Consulting	Right-of-Way	Utilities	Construction Engineering	Construction	Total	Federal Share	Local Share	
2023	43	128	0	0	0	0	171	158	13	
PD	0	0	0	0	189	983	1,172	1,086	86	
Fund Totals:	\$43	\$128	\$0	\$0	\$189	\$983	\$1,343	\$1,244	\$99	

Cherry Lane, Franklin Boulevard to 11th Avenue North, Rebuild, Nampa

Regionally Significant:

Key #: 22017

Requesting Agency: City of Nampa

Project Year: PD

Total Previous Expenditures: \$230

Total Programmed Cost: \$1,192

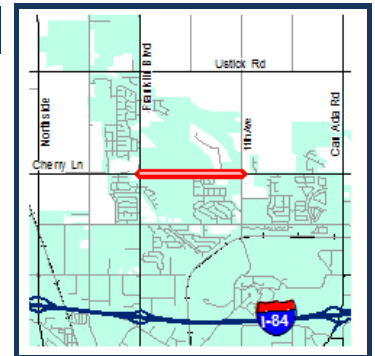
Total Cost (Prev. + Prog.): \$1,422

Project Description : Rebuild Cherry Lane from Franklin Boulevard to 11th Avenue North in the City of Nampa. Work includes adding a center turn lane, pedestrian and bicycle lanes, and intersection improvements.

COMPASS PM:

Maintenance
 Transportation Safety
 Congestion Reduction/System Reliability

Federal PM:



Funding Source		STBG-U		Program			Local Hwy - Urban		Local Match 7.34%	
Cost Year*	Preliminary Engineering	Preliminary Engineering Consulting	Right-of-Way	Utilities	Construction Engineering	Construction	Total	Federal Share	Local Share	
PD	0	0	0	0	324	868	1,192	1,105	87	
Fund Totals:	\$0	\$0	\$0	\$0	\$324	\$868	\$1,192	\$1,105	\$87	

*PD = Preliminary Development (projects with development activity but no programmed year of construction)

Cole Road, McGlochlin Street to Victory Road, Boise

Regionally Significant:

Key #: IN205-97

Requesting Agency: ACHD

Project Year: 2020-2021

Total Previous Expenditures: \$5,227

Total Programmed Cost: \$0

Total Cost (Prev. + Prog.): \$5,227

COMPASS PM:

- Congestion Reduction/System Reliability
- Housing
- Transportation Safety
- Community Infrastructure

Federal PM:



Project Description : Widen Cole Road from McGlochlin Street to Victory Road in the City of Boise to five lanes with median U-turns. Project also includes intersection improvements at Cole Road and Victory Road to seven lanes in each direction. Work also includes widening a bridge to five lanes and adding an enhanced pedestrian crossing at Cole Road and Diamond Street.

Funding Source Local (Regionally Significant) Program Hwy - Local Partnerships							Local Match 100.00%		
Cost Year*	Preliminary Engineering	Preliminary Engineering Consulting	Right-of-Way	Utilities	Construction Engineering	Construction	Total	Federal Share	Local Share
	0		0		0		0	0	0
Fund Totals:	\$0	\$0	\$0	\$0	\$0	\$0	\$0	\$0	\$0

*PD = Preliminary Development (projects with development activity but no programmed year of construction)

Commuteride, ACHD

Regionally Significant:

COMPASS PM:

Federal PM:

Key # : CPA3

Support

Requesting Agency: ACHD

Project Year: 2022-2027

Total Previous Expenditures: \$0

Total Programmed Cost: \$1,595

Total Cost (Prev. + Prog.): \$1,595

Project Description : Continue and improve rideshare program and marketing. Operate a third-party vanpool program in multi-county area and coordinate vanpools in the Boise and Nampa Urbanized Areas. These projects tie to Idaho Transportation Department key numbers 20729, 22015, 22436, 22386, 22738, and NEW.



Funding Source		STBG-TMA		Program				Local Hwy - Transportation Management Area		Local Match 0.00%	
Cost Year*	Preliminary Engineering	Preliminary Engineering Consulting	Right-of-Way	Utilities	Construction Engineering	Construction	Total	Federal Share	Local Share		
2022	0	0	0	0	0	220	220	220	0		
2023	0	0	0	0	0	220	220	220	0		
2024	0	0	0	0	0	220	220	220	0		
2025	0	0	0	0	0	220	220	220	0		
2026	0	0	0	0	0	220	220	220	0		
2027	0	0	0	0	0	220	220	220	0		
Fund Totals:	\$0	\$0	\$0	\$0	\$0	\$1,320	\$1,320	\$1,320	\$0		

Funding Source		STBG-U		Program				Local Hwy - Urban		Local Match 0.00%	
Cost Year*	Preliminary Engineering	Preliminary Engineering Consulting	Right-of-Way	Utilities	Construction Engineering	Construction	Total	Federal Share	Local Share		
2022	0	0	0	0	0	110	110	110	0		
2024	0	0	0	0	0	55	55	55	0		
2025	0	0	0	0	0	55	55	55	0		
2026	0	0	0	0	0	55	55	55	0		
Fund Totals:	\$0	\$0	\$0	\$0	\$0	\$275	\$275	\$275	\$0		

*PD = Preliminary Development (projects with development activity but no programmed year of construction)

Commuteride, ACHD, Van Replacements, Canyon County

Regionally Significant:

COMPASS PM:

Federal PM:

Key # : 20136a

Transportation Infrastructure

Requesting Agency: ACHD

Project Year: 2020-2022

Total Previous Expenditures: \$290

Total Programmed Cost: \$584

Total Cost (Prev. + Prog.): \$874

Project Description : Replace Commuteride vans in the Nampa Urbanized Area and rural areas using funds for bus and bus facilities.



Funding Source		FTA 5339 SU		Program			Transit Capital		Local Match 20.00%	
Cost Year*	Preliminary Engineering	Preliminary Engineering Consulting	Right-of-Way	Utilities	Construction Engineering	Construction	Total	Federal Share	Local Share	
2022	0	0	0	0	0	356	356	285	71	
Fund Totals:	\$0	\$0	\$0	\$0	\$0	\$356	\$356	\$285	\$71	

Funding Source		FTA 5339 R		Program			Transit Capital		Local Match 20.00%	
Cost Year*	Preliminary Engineering	Preliminary Engineering Consulting	Right-of-Way	Utilities	Construction Engineering	Construction	Total	Federal Share	Local Share	
2022	0	0	0	0	0	228	228	182	46	
Fund Totals:	\$0	\$0	\$0	\$0	\$0	\$228	\$228	\$182	\$46	

*PD = Preliminary Development (projects with development activity but no programmed year of construction)

Commuteride, Safety and Security Cameras, Ada County

Regionally Significant:

COMPASS PM:

Federal PM:

Key #: NEW1

Requesting Agency: ACHD

Project Year: 2024

Total Previous Expenditures: \$0

Total Programmed Cost: \$48

Total Cost (Prev. + Prog.): \$48

Project Description : Install security cameras at four ACHD-owned Park and Ride lots located at Ballantyne Park and Ride (State Highway 44 and West State Street) and Riverside Park and Ride (State Highway 44 and Edgewood Lane) in the City of Eagle, and County Terrace Park and Ride (near Meridian Road and Overland Road) and Rackham Road Park and Ride (Eagle Road and Overland Road) in the City of Meridian. A total of 240 parking spaces are provided at these four locations.



Funding Source		Local Participating		Program			Hwy - Local Partnerships		Local Match 100.00%	
Cost Year*	Preliminary Engineering	Preliminary Engineering Consulting	Right-of-Way	Utilities	Construction Engineering	Construction	Total	Federal Share	Local Share	
2024	1	0	0	0	0	2	3	0	3	
Fund Totals:	\$1	\$0	\$0	\$0	\$0	\$2	\$3	\$0	\$3	

Funding Source		STBG-TMA		Program			Local Hwy - Transportation Management Area		Local Match 7.34%	
Cost Year*	Preliminary Engineering	Preliminary Engineering Consulting	Right-of-Way	Utilities	Construction Engineering	Construction	Total	Federal Share	Local Share	
2024	0	0	0	0	0	45	45	42	3	
Fund Totals:	\$0	\$0	\$0	\$0	\$0	\$45	\$45	\$42	\$3	

Cost Increase Set-Aside

Regionally Significant:

COMPASS PM:

Federal PM:

Key #: 15001

Support

Requesting Agency: COMPASS

Project Year: 2022-2024

Total Previous Expenditures: \$0

Total Programmed Cost: \$3

Total Cost (Prev. + Prog.): \$3

Project Description : Set-aside for cost increases. Funds currently unprogrammed.



Funding Source		STBG-TMA		Program			Local Hwy - Transportation Management Area		Local Match 7.34%	
Cost Year*	Preliminary Engineering	Preliminary Engineering Consulting	Right-of-Way	Utilities	Construction Engineering	Construction	Total	Federal Share	Local Share	
2026	0	0	0	0	0	3	3	3	0	
Fund Totals:	\$0	\$0	\$0	\$0	\$0	\$3	\$3	\$3	\$0	

Eagle Road, Amity Road to Victory Road, Meridian

Regionally Significant:

Key #: RD207-33

Requesting Agency: ACHD

Project Year: 2021-2022

Total Previous Expenditures: \$328

Total Programmed Cost: \$483

Total Cost (Prev. + Prog.): \$811

COMPASS PM:

Congestion Reduction/System Reliability
 Transportation Safety
 Housing
 Community Infrastructure
 Health

Federal PM:



Project Description : Widen Eagle Road from Amity Road to Victory Road in the City of Meridian to five lanes with curb, gutter, sidewalk, and level three bike lanes. Project includes enhanced pedestrian crossing facility at Rome Drive and a roundabout at Eagle Road and Zaldia Drive.

Funding Source Local (Regionally Significant) Program Hwy - Local Partnerships								Local Match 100.00%	
Cost Year*	Preliminary Engineering	Preliminary Engineering Consulting	Right-of-Way	Utilities	Construction Engineering	Construction	Total	Federal Share	Local Share
2022	0	0	0	0	0	483	483	0	483
Fund Totals:	\$0	\$0	\$0	\$0	\$0	\$483	\$483	\$0	\$483

Eagle Road, Lake Hazel Road to Amity Road, Meridian

Regionally Significant:

Key #: RD216-04

Requesting Agency: ACHD

Project Year: 2023

Total Previous Expenditures: \$0

Total Programmed Cost: \$6,577

Total Cost (Prev. + Prog.): \$6,577

COMPASS PM:

Congestion Reduction/System Reliability
 Transportation Safety
 Housing
 Community Infrastructure
 Health

Federal PM:



Project Description : Widen Eagle Road from Lake Hazel Road to Amity Road in the City of Meridian to five lanes with curb, gutter, sidewalk, and a level three bike facility. Project includes a roundabout at Taconic Drive.

Funding Source Local (Regionally Significant) Program Hwy - Local Partnerships								Local Match 100.00%	
Cost Year*	Preliminary Engineering	Preliminary Engineering Consulting	Right-of-Way	Utilities	Construction Engineering	Construction	Total	Federal Share	Local Share
2022	0	15	1,320	0	0	0	1,335	0	1,335
2023	0	0	0	129	45	5,068	5,242	0	5,242
Fund Totals:	\$0	\$15	\$1,320	\$129	\$45	\$5,068	\$6,577	\$0	\$6,577

*PD = Preliminary Development (projects with development activity but no programmed year of construction)

Fairview Avenue, Locust Grove Road to SH-55 (Eagle Road), Meridian

Regionally Significant:

Key #: RC0133

Requesting Agency: ACHD

Project Year: 2023

Total Previous Expenditures: \$39

Total Programmed Cost: \$2,510

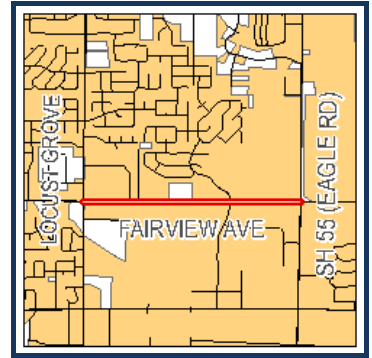
Total Cost (Prev. + Prog.): \$2,549

Project Description : Widen Fairview Avenue from Locust Grove Road to State Highway 55 (Eagle Road) to seven lanes in the City of Meridian. Project includes curb, gutter, sidewalk, and buffered bicycle lanes.

COMPASS PM:

Congestion Reduction/System Reliability
 Transportation Safety
 Community Infrastructure
 Housing

Federal PM:



Funding Source Local (Regionally Significant) Program Hwy - Local Partnerships								Local Match 100.00%	
Cost Year*	Preliminary Engineering	Preliminary Engineering Consulting	Right-of-Way	Utilities	Construction Engineering	Construction	Total	Federal Share	Local Share
2022	0	30	300	0	0	0	330	0	330
2023	0	0	0	0	0	2,180	2,180	0	2,180
Fund Totals:	\$0	\$30	\$300	\$0	\$0	\$2,180	\$2,510	\$0	\$2,510

Five Mile Road Overpass and Widening

Regionally Significant:

Key #: 23095

Requesting Agency: ACHD
 ITD

Project Year: 2025

Total Previous Expenditures: \$351

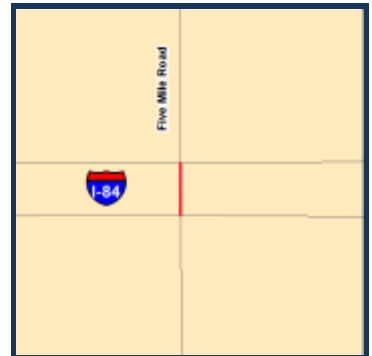
Total Programmed Cost: \$2,335

Total Cost (Prev. + Prog.): \$2,686

Project Description : To begin preliminary design and National Environmental Policy Act (NEPA) environmental review to replace the Five Mile Road overpass over Interstate 84, widen the bridge from two lanes to four lanes, and widen Five Mile Road from two lanes to five lanes from just north of Overland Road to Franklin Road in the City of Boise. Work includes curb, gutter, sidewalks, and enhanced bike lanes on both sides of the roadway. (Construction is considered "unfunded.")

COMPASS PM:

Federal PM:



Funding Source Local Participating Program Hwy - Local Partnerships								Local Match 100.00%	
Cost Year*	Preliminary Engineering	Preliminary Engineering Consulting	Right-of-Way	Utilities	Construction Engineering	Construction	Total	Federal Share	Local Share
2023	0	652	0	0	0	0	652	0	652
2024	0	0	565	0	0	0	565	0	565
2025	0	0	566	0	0	0	566	0	566
Fund Totals:	\$0	\$652	\$1,131	\$0	\$0	\$0	\$1,783	\$0	\$1,783

Funding Source STBG-TMA Program Local Hwy – CRRSAA 2021								Local Match 7.34%	
Cost Year*	Preliminary Engineering	Preliminary Engineering Consulting	Right-of-Way	Utilities	Construction Engineering	Construction	Total	Federal Share	Local Share
2022	0	552	0	0	0	0	552	511	41
Fund Totals:	\$0	\$552	\$0	\$0	\$0	\$0	\$552	\$511	\$41

*PD = Preliminary Development (projects with development activity but no programmed year of construction)

Franklin Boulevard and Karcher Road, Intersection Improvements, Nampa

Regionally Significant:

Key #: 22102

Requesting Agency: City of Nampa

Project Year: 2022

Total Previous Expenditures: \$431

Total Programmed Cost: \$1,555

Total Cost (Prev. + Prog.): \$1,986

COMPASS PM:

Congestion Reduction/System Reliability
 Transportation Safety
 Community Infrastructure
 Freight Movement and Economic Vitality
 Health

Federal PM:



Project Description : Construct a dual-lane, offset roundabout at Franklin Boulevard and Karcher Road in the City of Nampa. The project includes right-of-way, curb, gutter, sidewalk, lighting, pedestrian ramps, and lane widening. The design includes a roundabout with one entering lane eastbound and westbound, and two entering lanes northbound and southbound. The offset center of the roundabout is approximately 55 feet west and 10 feet north of the existing intersection. A power pole will be relocated on the northeast corner at project expense (power pole is in a private easement outside of the right-of-way).

Funding Source		Freight		Program			State Hwy - Freight		Local Match 7.34%	
Cost Year*	Preliminary Engineering	Preliminary Engineering Consulting	Right-of-Way	Utilities	Construction Engineering	Construction	Total	Federal Share	Local Share	
2022	0	0	0	0	0	1,555	1,555	1,441	114	
Fund Totals:	\$0	\$0	\$0	\$0	\$0	\$1,555	\$1,555	\$1,441	\$114	

Franklin Boulevard, Freight Improvements near 3rd Avenue North, Nampa

Regionally Significant:

Key #: 22103

Requesting Agency: City of Nampa

Project Year: 2022

Total Previous Expenditures: \$219

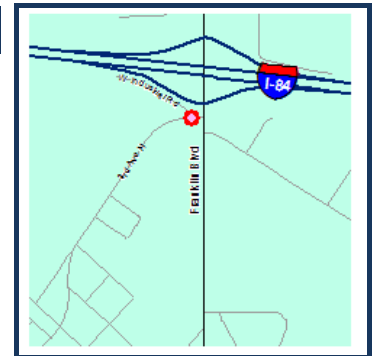
Total Programmed Cost: \$5,488

Total Cost (Prev. + Prog.): \$5,707

COMPASS PM:

Freight Movement and Economic Vitality
 Community Infrastructure
 Congestion Reduction/System Reliability
 Transportation Safety

Federal PM:



Project Description : Install a new signalized intersection approximately ¼ mile south of the existing Franklin Boulevard and Industrial Road intersection in the City of Nampa. Work will include improvements to existing intersections at Franklin Boulevard and Industrial Road, building a new local street east of Franklin Boulevard with a new structure at the Phyllis Canal crossing, and a relocated at-grade rail crossing. A new local street west of Franklin Boulevard will also be built, requiring a new structure at the Mason Creek crossing, and improvements to 5th Avenue North. Franklin Boulevard and 3rd Avenue North will be closed off with cul-de-sacs. Access improvements along Franklin Boulevard (near Jacksons store) will be addressed to reduce conflict points.

Funding Source		Freight		Program			State Hwy - Freight		Local Match 7.34%	
Cost Year*	Preliminary Engineering	Preliminary Engineering Consulting	Right-of-Way	Utilities	Construction Engineering	Construction	Total	Federal Share	Local Share	
2022	0	0	0	0	0	5,488	5,488	5,085	403	
Fund Totals:	\$0	\$0	\$0	\$0	\$0	\$5,488	\$5,488	\$5,085	\$403	

*PD = Preliminary Development (projects with development activity but no programmed year of construction)

Garden Street Multi-Use Pathway, Cassia Park to Albion Street, Boise

Regionally Significant:

COMPASS PM:

Federal PM:

Key #: NEW10

Requesting Agency: City of Boise

Project Year: 2024

Total Previous Expenditures: \$0

Total Programmed Cost: \$1,733

Total Cost (Prev. + Prog.): \$1,733

Project Description : Construct a multi-use pathway adjacent to the existing Electric Light Switch Lateral channel between Cassia Park and Albion Street in the City of Boise. Work includes piping the existing lateral channel and constructing a multi-use bridge over the Ridenbaugh Canal in the southern portion of the pathway corridor in order to connect this pathway to the ACHD Cassia Street Bikeway and Cassia Park.



Funding Source		Local Participating		Program			Hwy - Local Partnerships		Local Match 100.00%	
Cost Year*	Preliminary Engineering	Preliminary Engineering Consulting	Right-of-Way	Utilities	Construction Engineering	Construction	Total	Federal Share	Local Share	
2024	0	0	0	0	0	520	520	0	520	
Fund Totals:	\$0	\$0	\$0	\$0	\$0	\$520	\$520	\$0	\$520	

Funding Source		STBG-TMA		Program			Local Hwy – CRRSAA 2021		Local Match 7.34%	
Cost Year*	Preliminary Engineering	Preliminary Engineering Consulting	Right-of-Way	Utilities	Construction Engineering	Construction	Total	Federal Share	Local Share	
2022	39	81	0	0	0	0	120	111	9	
2024	0	0	0	0	263	830	1,093	1,013	80	
Fund Totals:	\$39	\$81	\$0	\$0	\$263	\$830	\$1,213	\$1,124	\$89	

Highway 30, Sand Hollow Road to SH-44, Canyon County

Regionally Significant:

COMPASS PM:

Federal PM:

Key #: 19951

Requesting Agency: Canyon Highway District

Project Year: PD

Total Previous Expenditures: \$324

Total Programmed Cost: \$2,710

Total Cost (Prev. + Prog.): \$3,034

Project Description : Rehabilitate Old Highway 30 from State Highway 44 to Galloway Road, and Goodson Road to south of Sand Hollow Road. Work also includes improvements to the intersections at Farmway Road and Goodson Road.



Funding Source		STBG-R		Program			Local Hwy - Rural		Local Match 7.34%	
Cost Year*	Preliminary Engineering	Preliminary Engineering Consulting	Right-of-Way	Utilities	Construction Engineering	Construction	Total	Federal Share	Local Share	
PD	0	0	0	0	487	2,223	2,710	2,511	199	
Fund Totals:	\$0	\$0	\$0	\$0	\$487	\$2,223	\$2,710	\$2,511	\$199	

*PD = Preliminary Development (projects with development activity but no programmed year of construction)

Holly Street/Northwest Nazarene University Roadway Reconfiguration, Nampa

Regionally Significant:

Key #: 22132

Requesting Agency: City of Nampa

Project Year: PD

Total Previous Expenditures: \$121

Total Programmed Cost: \$338

Total Cost (Prev. + Prog.): \$459

COMPASS PM:

- Transportation Safety
- Land Use
- Health
- Congestion Reduction/System Reliability
- Environmental Sustainability

Federal PM:



Project Description : Reconfigure the four-lane Holly Street roadway section (Roosevelt Avenue to Colorado Avenue) to a three-lane section and add bicycle lanes to improve vehicle, bicycle, and pedestrian transportation safety issues along the Holly Street corridor adjacent to Northwest Nazarene University (NNU) in the City of Nampa. The project will also extend bicycle lanes from Roosevelt Avenue to Hawaii Avenue to the south, connecting existing bicycle lane facilities to the area.

Funding Source		STBG-U		Program			Local Hwy - Urban		Local Match 7.34%	
Cost Year*	Preliminary Engineering	Preliminary Engineering Consulting	Right-of-Way	Utilities	Construction Engineering	Construction	Total	Federal Share	Local Share	
PD	0	0	0	0	53	285	338	313	25	
Fund Totals:	\$0	\$0	\$0	\$0	\$53	\$285	\$338	\$313	\$25	

Homedale Road, Curve Improvements, Canyon Highway District

Regionally Significant:

Key #: 22878

Requesting Agency: Canyon Highway District

Project Year: 2024

Total Previous Expenditures: \$132

Total Programmed Cost: \$867

Total Cost (Prev. + Prog.): \$999

COMPASS PM:

- Transportation Safety
- Congestion Reduction/System Reliability

Federal PM:



Project Description : Widen the Deer Flat North Canal bridge and shoulders on Homedale Road near the intersection of Malt Road in Canyon County. Project includes installation of white thermoplastic rumble strips and flattening of the curve slopes to provide drivers visual guidance with an alert of lane departure and an improved recovery area for reduction in overturning potential.

Funding Source		HSIP (Local)		Program			Hwy Safety - Local		Local Match 7.34%	
Cost Year*	Preliminary Engineering	Preliminary Engineering Consulting	Right-of-Way	Utilities	Construction Engineering	Construction	Total	Federal Share	Local Share	
2023	0	0	21	0	0	0	21	19	2	
2024	0	0	0	0	197	649	846	784	62	
Fund Totals:	\$0	\$0	\$21	\$0	\$197	\$649	\$867	\$803	\$64	

*PD = Preliminary Development (projects with development activity but no programmed year of construction)

I-84 and I-184 Signage Replacement, Ada County - FY2024

Regionally Significant:

COMPASS PM:

Federal PM:

Key #: ORN23181

Requesting Agency: ITD

Project Year: 2024

Total Previous Expenditures: \$0

Total Programmed Cost: \$500

Total Cost (Prev. + Prog.): \$500

Project Description : Update and replace signs on Interstate 84 between Ten Mile Road and west of Broadway Avenue and Interstate 184 between Maple Grove Road and Orchard Street.



Funding Source		State Program						State Highway - Safety		Local Match 100.00%	
Cost Year*	Preliminary Engineering	Preliminary Engineering Consulting	Right-of-Way	Utilities	Construction Engineering	Construction	Total	Federal Share	Local Share		
2023	10	0	0	0	0	0	10	0	10		
2024	0	0	0	0	23	467	490	0	490		
Fund Totals:	\$10	\$0	\$0	\$0	\$23	\$467	\$500	\$0	\$500		

I-84 and SH-44 Interchange Replacement, Canyon County

Regionally Significant:

COMPASS PM:

Federal PM:

Key #: ORN23188

Requesting Agency: ITD

Project Year: 2028

Total Previous Expenditures: \$0

Total Programmed Cost: \$16,225

Total Cost (Prev. + Prog.): \$16,225

Project Description : Replace the bridge at Interstate 84 and State Highway 44 (Exit 25 to the City of Middleton) in Canyon County. The current bridge was originally built in 1964 and has reached the end of its design life. The bridge will be replaced at current design standards.



Funding Source		NHPP Program						State Hwy - Bridge Restoration		Local Match 7.34%	
Cost Year*	Preliminary Engineering	Preliminary Engineering Consulting	Right-of-Way	Utilities	Construction Engineering	Construction	Total	Federal Share	Local Share		
2022	200	25	0	0	0	0	225	208	17		
2023	200	800	0	0	0	0	1,000	927	73		
2028	0	0	0	0	1,000	14,000	15,000	13,899	1,101		
Fund Totals:	\$400	\$825	\$0	\$0	\$1,000	\$14,000	\$16,225	\$15,034	\$1,191		

I-84, Bridge Repairs, District 3 – FY2022

Regionally Significant:

COMPASS PM:

Federal PM:

Key # : 20405

Maintenance

Requesting Agency: ITD

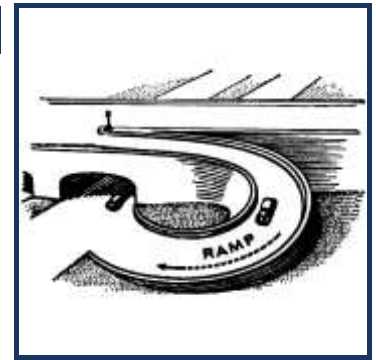
Project Year: 2022

Total Previous Expenditures: \$89

Total Programmed Cost: \$1,704

Total Cost (Prev. + Prog.): \$1,793

Project Description : Provide bridge repairs at the following locations on Interstate 84: Sand Hollow Road, Galloway Road, Purple Sage Road, US 20/26, Ten Mile Road, Hunter Lateral, Ridenbaugh Canal, Five Mile Creek, Indian Creek, Mayfield Road, Squaw Creek, and Canyon Creek. (Ada County 53%, Elmore County 16%, Canyon County 23%, and Payette County 4%)



Funding Source		STBG-State		Program			State Hwy - Bridge Preservation		Local Match 7.34%	
Cost Year*	Preliminary Engineering	Preliminary Engineering Consulting	Right-of-Way	Utilities	Construction Engineering	Construction	Total	Federal Share	Local Share	
2022	0	0	0	0	112	1,592	1,704	1,579	125	
Fund Totals:	\$0	\$0	\$0	\$0	\$112	\$1,592	\$1,704	\$1,579	\$125	

I-84, Cole Road and Overland Road Interchange, Lighting Improvements, Boise

Regionally Significant:

COMPASS PM:

Federal PM:

Key # : 22746

Transportation Safety

Requesting Agency: ITD

Project Year: 2023

Total Previous Expenditures: \$0

Total Programmed Cost: \$250

Total Cost (Prev. + Prog.): \$250

Project Description : Upgrade the existing lighting infrastructure at the Cole Road & Overland Road Interchange (Interstate 84, Exit 50B) in the City of Boise.



Funding Source		State		Program			State Highway - Safety		Local Match 100.00%	
Cost Year*	Preliminary Engineering	Preliminary Engineering Consulting	Right-of-Way	Utilities	Construction Engineering	Construction	Total	Federal Share	Local Share	
2022	10	0	0	0	0	0	10	0	10	
2023	0	0	0	0	11	229	240	0	240	
Fund Totals:	\$10	\$0	\$0	\$0	\$11	\$229	\$250	\$0	\$250	

I-84, Garrity Interchange to Ten Mile Interchange, Canyon and Ada Counties

Regionally Significant:

COMPASS PM:

Federal PM:

Key # : 20212

Maintenance

Requesting Agency: ITD

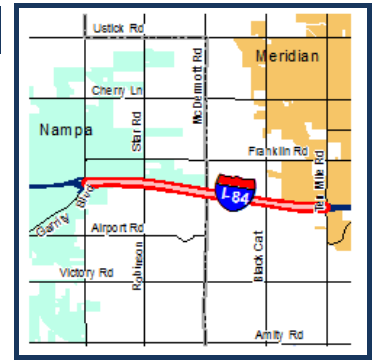
Project Year: 2025

Total Previous Expenditures: \$90

Total Programmed Cost: \$2,897

Total Cost (Prev. + Prog.): \$2,987

Project Description : Resurface the pavement on Interstate 84 between the Garrity Interchange in the City of Nampa and the Ten Mile Interchange in the City of Meridian. This is a routine procedure to maintain the existing pavement.



Funding Source		IM	Program					State Hwy - Pavement Preservation		Local Match 7.73%	
Cost Year*	Preliminary Engineering	Preliminary Engineering Consulting	Right-of-Way	Utilities	Construction Engineering	Construction	Total	Federal Share	Local Share		
2025	0	0	0	0	203	2,694	2,897	2,673	224		
Fund Totals:	\$0	\$0	\$0	\$0	\$203	\$2,694	\$2,897	\$2,673	\$224		

I-84B (Garrity Boulevard) and Stamm Lane Intersection Improvements, Nampa

Regionally Significant:

COMPASS PM:

Federal PM:

Key # : 22712

Congestion Reduction/System Reliability

Requesting Agency: ITD

Transportation Safety

Project Year: 2027

Community Infrastructure

Total Previous Expenditures: \$0

Freight Movement and Economic Vitality

Total Programmed Cost: \$1,971

Total Cost (Prev. + Prog.): \$1,971

Project Description : Widen Interstate 84B (Garrity Boulevard) at the Stamm Lane intersection in the City of Nampa to improve safety and mobility.



Funding Source		State	Program					State Hwy - Safety & Capacity (Capacity)		Local Match 100.00%	
Cost Year*	Preliminary Engineering	Preliminary Engineering Consulting	Right-of-Way	Utilities	Construction Engineering	Construction	Total	Federal Share	Local Share		
2022	138	0	0	0	0	0	138	0	138		
2027	0	0	0	0	165	1,283	1,448	0	1,448		
Fund Totals:	\$138	\$0	\$0	\$0	\$165	\$1,283	\$1,586	\$0	\$1,586		

Funding Source		Local Participating		Program					Hwy - Local Partnerships		Local Match 100.00%	
Cost Year*	Preliminary Engineering	Preliminary Engineering Consulting	Right-of-Way	Utilities	Construction Engineering	Construction	Total	Federal Share	Local Share			
2023	0	0	385	0	0	0	385	0	385			
Fund Totals:	\$0	\$0	\$385	\$0	\$0	\$0	\$385	\$0	\$385			

*PD = Preliminary Development (projects with development activity but no programmed year of construction)

Indiana and Orchard Shared Roadway, Canyon County

Regionally Significant:

Key #: 22602

Requesting Agency: Canyon Highway District

Project Year: 2024-2025

Total Previous Expenditures: \$13

Total Programmed Cost: \$5,290

Total Cost (Prev. + Prog.): \$5,303

Project Description : Add four-foot paved shoulders on Indiana Avenue from Roosevelt Avenue to Orchard Avenue and on Orchard Avenue from Indiana Avenue to Riverside Road in Canyon County (approximately 1.5 miles) using Federal Lands Access Program funds. Project managed by Western Federal Lands.

COMPASS PM:

Transportation Safety
Community Infrastructure
Farmland

Federal PM:



Funding Source		FLAP		Program				Hwy - Federal Lands Access		Local Match 7.34%	
Cost Year*	Preliminary Engineering	Preliminary Engineering Consulting	Right-of-Way	Utilities	Construction Engineering	Construction	Total	Federal Share	Local Share		
2022	0	119	0	0	0	0	119	110	9		
2023	0	249	0	0	0	0	249	231	18		
2024	0	0	0	0	0	4,547	4,547	4,213	334		
2025	0	0	0	0	375	0	375	347	28		
Fund Totals:	\$0	\$368	\$0	\$0	\$375	\$4,547	\$5,290	\$4,902	\$388		

Lake Hazel Road, Cloverdale Road to Five Mile Road, Ada County

Regionally Significant:

Key #: RD207-29

Requesting Agency: ACHD

Project Year: 2025

Total Previous Expenditures: \$0

Total Programmed Cost: \$6,216

Total Cost (Prev. + Prog.): \$6,216

Project Description : Widen Lake Hazel Road from Cloverdale Road to Five Mile Road in Ada County to five lanes with curb, gutter, and multi-use pathways.

COMPASS PM:

Community Infrastructure
Housing
Congestion Reduction/System Reliability
Transportation Safety
Health

Federal PM:



Funding Source		Local (Regionally Significant)		Program				Hwy - Local Partnerships		Local Match 100.00%	
Cost Year*	Preliminary Engineering	Preliminary Engineering Consulting	Right-of-Way	Utilities	Construction Engineering	Construction	Total	Federal Share	Local Share		
2022	0	22	400	0	0	0	422	0	422		
2023	0	0	801	0	0	0	801	0	801		
2025	0	0	0	194	299	4,500	4,993	0	4,993		
Fund Totals:	\$0	\$22	\$1,201	\$194	\$299	\$4,500	\$6,216	\$0	\$6,216		

Lake Hazel Road, Eagle Road to Cloverdale Road, Ada County

Regionally Significant:

Key #: RD209-18

Requesting Agency: ACHD

Project Year: 2024

Total Previous Expenditures: \$0

Total Programmed Cost: \$8,186

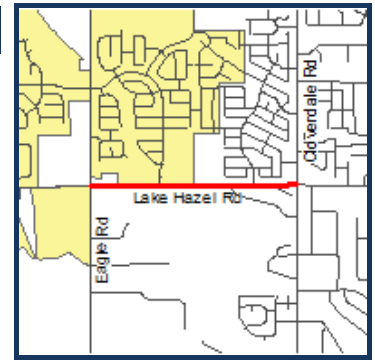
Total Cost (Prev. + Prog.): \$8,186

Project Description : Widen Lake Hazel Road from Eagle Road to Cloverdale Road in Ada County to five lanes with curb, gutter, and multi-use pathways.

COMPASS PM:

- Community Infrastructure
- Housing
- Congestion Reduction/System Reliability
- Transportation Safety
- Health

Federal PM:



Funding Source Local (Regionally Significant) Program Hwy - Local Partnerships								Local Match 100.00%	
Cost Year*	Preliminary Engineering	Preliminary Engineering Consulting	Right-of-Way	Utilities	Construction Engineering	Construction	Total	Federal Share	Local Share
2022	0	360	4	0	0	0	364	0	364
2023	0	15	201	0	0	0	216	0	216
2024	0	0	0	10	309	7,287	7,606	0	7,606
Fund Totals:	\$0	\$375	\$205	\$10	\$309	\$7,287	\$8,186	\$0	\$8,186

Lake Hazel Road, Five Mile Road to Maple Grove Road, Ada County

Regionally Significant:

Key #: RD207-30

Requesting Agency: ACHD

Project Year: PD

Total Previous Expenditures: \$0

Total Programmed Cost: \$4,889

Total Cost (Prev. + Prog.): \$4,889

Project Description : Widen Lake Hazel Road from Five Mile Road to Maple Grove Road in Ada County to five lanes with curb, gutter, and multi-use pathways.

COMPASS PM:

- Community Infrastructure
- Housing
- Congestion Reduction/System Reliability
- Transportation Safety
- Health

Federal PM:



Funding Source Local (Regionally Significant) Program Hwy - Local Partnerships								Local Match 100.00%	
Cost Year*	Preliminary Engineering	Preliminary Engineering Consulting	Right-of-Way	Utilities	Construction Engineering	Construction	Total	Federal Share	Local Share
2022	0	416	5	0	0	0	421	0	421
2023	0	0	246	0	0	0	246	0	246
PD	0	0	0	60	62	4,100	4,222	0	4,222
Fund Totals:	\$0	\$416	\$251	\$60	\$62	\$4,100	\$4,889	\$0	\$4,889

*PD = Preliminary Development (projects with development activity but no programmed year of construction)

Lake Hazel Road, Maple Grove Road to Cole Road, Ada County

Regionally Significant:

Key #: RD216-05

Requesting Agency: ACHD

Project Year: PD

Total Previous Expenditures: \$0

Total Programmed Cost: \$4,061

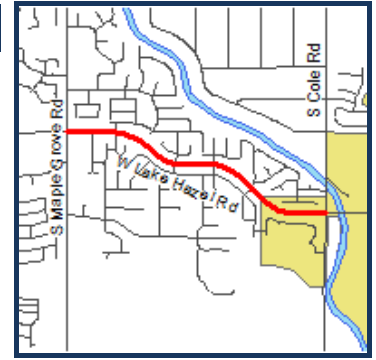
Total Cost (Prev. + Prog.): \$4,061

Project Description : Widen Lake Hazel Road from Maple Grove Road to Cole Road in Ada County to five lanes with curb, gutter, and ten-foot multi-use pathway facility.

COMPASS PM:

- Community Infrastructure
- Housing
- Congestion Reduction/System Reliability
- Transportation Safety
- Health

Federal PM:



Funding Source Local (Regionally Significant) Program Hwy - Local Partnerships								Local Match 100.00%	
Cost Year*	Preliminary Engineering	Preliminary Engineering Consulting	Right-of-Way	Utilities	Construction Engineering	Construction	Total	Federal Share	Local Share
2023	0	332	4	0	0	0	336	0	336
2024	0	0	60	0	0	0	60	0	60
PD	0	0	0	0	0	3,665	3,665	0	3,665
Fund Totals:	\$0	\$332	\$64	\$0	\$0	\$3,665	\$4,061	\$0	\$4,061

Linder Road, SH-44 (State Street) to Floating Feather Road, Eagle

Regionally Significant:

Key #: RD209-28

Requesting Agency: ACHD

Project Year: 2024

Total Previous Expenditures: \$6

Total Programmed Cost: \$7,068

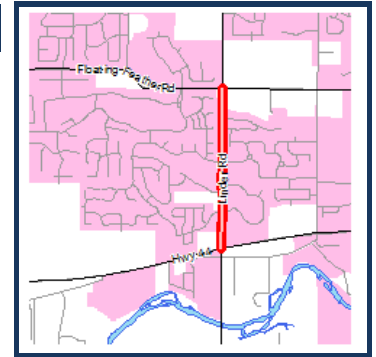
Total Cost (Prev. + Prog.): \$7,074

Project Description : Widen Linder Road from State Highway 44 (State Street) to Floating Feather Road in the City of Eagle to five lanes with curb, gutter, sidewalk, and multi-use pathways. Project includes improvements on two bridges.

COMPASS PM:

- Community Infrastructure
- Housing
- Congestion Reduction/System Reliability
- Transportation Safety
- Health

Federal PM:



Funding Source Local (Regionally Significant) Program Hwy - Non-Participating								Local Match 100.00%	
Cost Year*	Preliminary Engineering	Preliminary Engineering Consulting	Right-of-Way	Utilities	Construction Engineering	Construction	Total	Federal Share	Local Share
2022	0	0	700	0	0	0	700	0	700
2023	0	16	0	0	0	0	16	0	16
2024	0	0	0	0	72	6,280	6,352	0	6,352
Fund Totals:	\$0	\$16	\$700	\$0	\$72	\$6,280	\$7,068	\$0	\$7,068

*PD = Preliminary Development (projects with development activity but no programmed year of construction)

Linder Road, US 20/26 (Chinden) to SH-44 (State), Ada County

Regionally Significant:

Key #: RD207-19

Requesting Agency: ACHD

Project Year: PD

Total Previous Expenditures: \$141

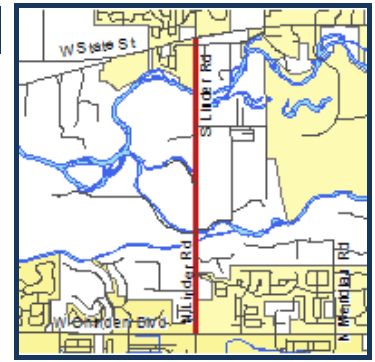
Total Programmed Cost: \$20,766

Total Cost (Prev. + Prog.): \$20,907

COMPASS PM:

- Congestion Reduction/System Reliability
- Housing
- Community Infrastructure
- Transportation Safety
- Health

Federal PM:



Project Description : Widen Linder Road from US 20/26 (Chinden Boulevard) to State Highway 44 (State Street) in Ada County to five lanes with detached multi-use pathways on Linder Road from Chinden Boulevard to 1,000 feet north of Artesian Road. Right-of-way will be acquired for an ultimate seven-lane buildout. Project includes widening three bridges.

Funding Source Local (Regionally Significant) Program Hwy - Local Partnerships								Local Match 100.00%	
Cost Year*	Preliminary Engineering	Preliminary Engineering Consulting	Right-of-Way	Utilities	Construction Engineering	Construction	Total	Federal Share	Local Share
2024	0	824	5	5	0	0	834	0	834
2025	0	431	0	0	0	0	431	0	431
PD	0	0	1,651	0	0	17,850	19,501	0	19,501
Fund Totals:	\$0	\$1,255	\$1,656	\$5	\$0	\$17,850	\$20,766	\$0	\$20,766

Microseals, Front/Myrtle/Broadway, Boise

Regionally Significant:

Key #: 22677

Requesting Agency: ITD

Project Year: 2026

Total Previous Expenditures: \$1

Total Programmed Cost: \$1,589

Total Cost (Prev. + Prog.): \$1,590

COMPASS PM:

- Maintenance

Federal PM:



Project Description : Microseal approximately 25 lane-miles of US-20/26 (Front Street, Myrtle Street, and Broadway Avenue) in the City of Boise to improve ride quality and extend the pavement lifespan.

Funding Source State Program State Hwy - Pavement Preservation							Local Match 100.00%		
Cost Year*	Preliminary Engineering	Preliminary Engineering Consulting	Right-of-Way	Utilities	Construction Engineering	Construction	Total	Federal Share	Local Share
2026	0	0	0	0	128	1,461	1,589	0	1,589
Fund Totals:	\$0	\$0	\$0	\$0	\$128	\$1,461	\$1,589	\$0	\$1,589

*PD = Preliminary Development (projects with development activity but no programmed year of construction)

Microseals, State/Glenwood/Chinden, Ada County

Regionally Significant:

COMPASS PM:

Federal PM:

Key # : 20536

Maintenance

Requesting Agency: ITD

Project Year: 2026

Total Previous Expenditures: \$75

Total Programmed Cost: \$2,457

Total Cost (Prev. + Prog.): \$2,532

Project Description : Microseal approximately 35 miles of arterial roadways in Ada County to seal asphalt and preserve the road surface. Roadway segments include State Highway 44 (State Street) from State Highway 55 (Eagle Road) to Glenwood Street; State Street, north of Glenwood Street, to US Highway 20/26 (Chinden Boulevard); Chinden Boulevard from Eagle Road to the Interstate 84B connector ramps; Myrtle Street, Front Street; US Highway 20/26, Broadway Avenue, between Myrtle Street and Front Street; and US Highway 20/26, Broadway Avenue, from Myrtle Street to the New York Canal, excluding the Boise River Bridge.



Funding Source		State		Program			State Hwy - Pavement Preservation		Local Match 100.00%	
Cost Year*	Preliminary Engineering	Preliminary Engineering Consulting	Right-of-Way	Utilities	Construction Engineering	Construction	Total	Federal Share	Local Share	
2026	0	0	0	0	199	2,258	2,457	0	2,457	
Fund Totals:	\$0	\$0	\$0	\$0	\$199	\$2,258	\$2,457	\$0	\$2,457	

Middleton Road and Ustick Road, Roundabout, Caldwell

Regionally Significant:

COMPASS PM:

Federal PM:

Key # : 13487

Congestion Reduction/System Reliability
Freight Movement and Economic Vitality
Transportation Safety
Housing
Farmland

Requesting Agency: City of Caldwell

Project Year: 2025

Total Previous Expenditures: \$337

Total Programmed Cost: \$2,114

Total Cost (Prev. + Prog.): \$2,451

Project Description : Construct a roundabout to help traffic flow and congestion at the Middleton Road and Ustick Road intersection in the City of Caldwell.



Funding Source		STBG-U		Program			Local Hwy - Urban		Local Match 7.34%	
Cost Year*	Preliminary Engineering	Preliminary Engineering Consulting	Right-of-Way	Utilities	Construction Engineering	Construction	Total	Federal Share	Local Share	
2025	0	0	0	0	344	1,770	2,114	1,959	155	
Fund Totals:	\$0	\$0	\$0	\$0	\$344	\$1,770	\$2,114	\$1,959	\$155	

Midway Road, SH-55 (Karcher Road) to I-84B, Rehabilitation, Canyon County

Regionally Significant:

COMPASS PM:

Federal PM:

Key #: 22016

Maintenance

Requesting Agency: Canyon Highway District
City of Caldwell

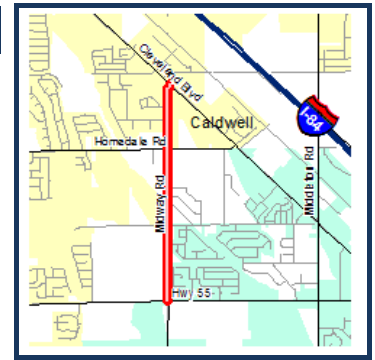
Project Year: PD

Total Previous Expenditures: \$291

Total Programmed Cost: \$1,189

Total Cost (Prev. + Prog.): \$1,480

Project Description : Rehabilitate pavement and construct shared-use shoulders on Midway Road between State Highway 55 (Karcher Road) and Interstate 84B (Caldwell Boulevard) in Canyon County.



Funding Source		STBG-U		Program			Local Hwy - Urban		Local Match 7.34%	
Cost Year*	Preliminary Engineering	Preliminary Engineering Consulting	Right-of-Way	Utilities	Construction Engineering	Construction	Total	Federal Share	Local Share	
PD	0	0	0	0	282	907	1,189	1,102	87	
Fund Totals:	\$0	\$0	\$0	\$0	\$282	\$907	\$1,189	\$1,102	\$87	

Old Highway 30, Plymouth Street Bridge, Caldwell

Regionally Significant:

COMPASS PM:

Federal PM:

Key #: 13494

Transportation Infrastructure
Open Space
Congestion Reduction/System Reliability
Environmental Sustainability
Community Infrastructure

Requesting Agency: Canyon Highway District
City of Caldwell

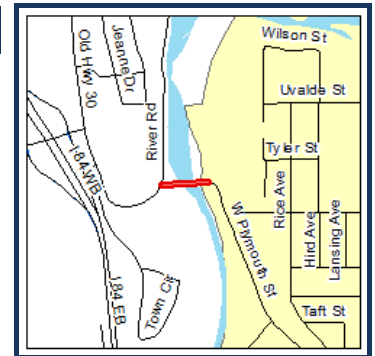
Project Year: 2023

Total Previous Expenditures: \$2,321

Total Programmed Cost: \$8,729

Total Cost (Prev. + Prog.): \$11,050

Project Description : Replace the Plymouth Street Bridge in the City of Caldwell with a new two-lane structure, leaving the existing bridge in place for use as a bicycle and pedestrian bridge.



Funding Source		Bridge (Local)		Program			Local Hwy - Bridge		Local Match 7.34%	
Cost Year*	Preliminary Engineering	Preliminary Engineering Consulting	Right-of-Way	Utilities	Construction Engineering	Construction	Total	Federal Share	Local Share	
2022	0	0	149	0	0	0	149	138	11	
2023	0	0	0	0	846	5,650	6,496	6,019	477	
Fund Totals:	\$0	\$0	\$149	\$0	\$846	\$5,650	\$6,645	\$6,157	\$488	

Funding Source		STBG-U		Program			Local Hwy - Urban		Local Match 7.34%	
Cost Year*	Preliminary Engineering	Preliminary Engineering Consulting	Right-of-Way	Utilities	Construction Engineering	Construction	Total	Federal Share	Local Share	
2022	0	0	171	0	0	0	171	158	13	
2023	0	0	0	0	313	1,600	1,913	1,773	140	
Fund Totals:	\$0	\$0	\$171	\$0	\$313	\$1,600	\$2,084	\$1,931	\$153	

*PD = Preliminary Development (projects with development activity but no programmed year of construction)

Orchard Street Realignment, Gowen Road to Victory Road, Boise

Regionally Significant:

Key #: RD207-01

Requesting Agency: ACHD

Project Year: 2024-2025

Total Previous Expenditures: \$177

Total Programmed Cost: \$18,656

Total Cost (Prev. + Prog.): \$18,833

COMPASS PM:

Congestion Reduction/System Reliability
 Transportation Safety
 Community Infrastructure
 Environmental Sustainability

Federal PM:



Project Description : Realign and widen Orchard Street from Gowen Road to Victory Road in the City of Boise to five lanes with curb, gutter, sidewalk, and a level three bicycle facility.

Funding Source Local (Regionally Significant) Program Hwy - Local Partnerships								Local Match 100.00%	
Cost Year*	Preliminary Engineering	Preliminary Engineering Consulting	Right-of-Way	Utilities	Construction Engineering	Construction	Total	Federal Share	Local Share
2022	0	34	663	0	0	0	697	0	697
2023	0	0	727	0	0	10,787	11,514	0	11,514
2024	0	0	0	0	0	6,445	6,445	0	6,445
Fund Totals:	\$0	\$34	\$1,390	\$0	\$0	\$17,232	\$18,656	\$0	\$18,656

Pathway, Federal Way and Broadway Avenue Multi-Use Pathway, Boise

Regionally Significant:

Key #: ORN23307

Requesting Agency: City of Boise

Project Year: PD

Total Previous Expenditures: \$0

Total Programmed Cost: \$1,399

Total Cost (Prev. + Prog.): \$1,399

COMPASS PM:

Federal PM:



Project Description : Construct a 10-foot separated, concrete, low-stress multi-use pathway at the interchange of Broadway Avenue (US 20/26) and Federal Way in the City of Boise. Project will provide bicycle and pedestrian connectivity and make the area compliant with Americans with Disabilities Act requirements.

Funding Source TAP-TMA Program Local Hwy - Transportation Alternatives								Local Match 7.34%	
Cost Year*	Preliminary Engineering	Preliminary Engineering Consulting	Right-of-Way	Utilities	Construction Engineering	Construction	Total	Federal Share	Local Share
2022	41	134	0	0	0	0	175	162	13
Fund Totals:	\$41	\$134	\$0	\$0	\$0	\$0	\$175	\$162	\$13

Funding Source STBG-TMA Program Local Hwy - Transportation Management Area								Local Match 7.34%	
Cost Year*	Preliminary Engineering	Preliminary Engineering Consulting	Right-of-Way	Utilities	Construction Engineering	Construction	Total	Federal Share	Local Share
PD	0	0	105	48	175	896	1,224	1,134	90
Fund Totals:	\$0	\$0	\$105	\$48	\$175	\$896	\$1,224	\$1,134	\$90

*PD = Preliminary Development (projects with development activity but no programmed year of construction)

Pathway, Greenbelt Completion, Boise State

Regionally Significant:

Key #: 22385

Requesting Agency: Boise State University

Project Year: 2026-2027

Total Previous Expenditures: \$0

Total Programmed Cost: \$972

Total Cost (Prev. + Prog.): \$972

COMPASS PM:

Community Infrastructure
 Transportation Safety
 Health
 Environmental Sustainability
 Open Space

Federal PM:



Project Description : Design and construct improvements to the Boise River Greenbelt along Cesar Chavez Road (south side of Boise River) between Theatre Lane and Broadway Avenue on the Boise State University campus. Improvements include widening the pathway from 8 feet to 12 feet and adding a well-defined landscaped buffer between the pathway and the street.

Funding Source		TAP-TMA		Program			Local Hwy - Transportation Alternatives		Local Match 7.34%	
Cost Year*	Preliminary Engineering	Preliminary Engineering Consulting	Right-of-Way	Utilities	Construction Engineering	Construction	Total	Federal Share	Local Share	
2024	11	39	0	0	0	0	50	46	4	
2026	0	0	0	0	213	186	399	370	29	
2027	0	0	0	0	0	523	523	485	38	
Fund Totals:	\$11	\$39	\$0	\$0	\$213	\$709	\$972	\$901	\$71	

Pathway, Grimes City Pathway Extension, Nampa

Regionally Significant:

Key #: 23025

Requesting Agency: City of Nampa

Project Year: PD

Total Previous Expenditures: \$0

Total Programmed Cost: \$462

Total Cost (Prev. + Prog.): \$462

COMPASS PM:

Health
 Transportation Safety
 Environmental Sustainability
 Congestion Reduction/System Reliability

Federal PM:



Project Description : Extend Grimes City Pathway from McDonagh Park to Birch Elementary in the City of Nampa. Project includes 1/2 mile of 12-foot asphalt pathway, lighting, and crosswalk improvements.

Funding Source		STBG-U		Program			Local Hwy - Urban		Local Match 7.34%	
Cost Year*	Preliminary Engineering	Preliminary Engineering Consulting	Right-of-Way	Utilities	Construction Engineering	Construction	Total	Federal Share	Local Share	
2023	11	66	0	0	0	0	77	71	6	
PD	0	0	0	0	51	334	385	357	28	
Fund Totals:	\$11	\$66	\$0	\$0	\$51	\$334	\$462	\$428	\$34	

*PD = Preliminary Development (projects with development activity but no programmed year of construction)

Pathway, Rail with Trail, Meridian

Regionally Significant:

Key #: 13918

Requesting Agency: City of Meridian

Project Year: 2024

Total Previous Expenditures: \$75

Total Programmed Cost: \$649

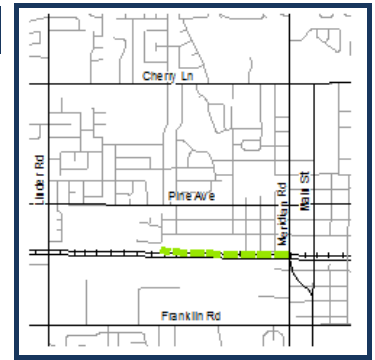
Total Cost (Prev. + Prog.): \$724

Project Description : Construct a multi-use pathway in the City of Meridian parallel to the railroad tracks for approximately ½ mile west towards Linder Road from Meridian Road.

COMPASS PM:

Land Use
Environmental Sustainability
Open Space
Transportation Safety
Health

Federal PM:



Funding Source		Local Participating		Program			Hwy - Local Partnerships		Local Match 100.00%	
Cost Year*	Preliminary Engineering	Preliminary Engineering Consulting	Right-of-Way	Utilities	Construction Engineering	Construction	Total	Federal Share	Local Share	
2022	0	0	120	0	0	0	120	0	120	
Fund Totals:	\$0	\$0	\$120	\$0	\$0	\$0	\$120	\$0	\$120	

Funding Source		STBG-TMA		Program			Local Hwy – CRRSAA 2021		Local Match 7.34%	
Cost Year*	Preliminary Engineering	Preliminary Engineering Consulting	Right-of-Way	Utilities	Construction Engineering	Construction	Total	Federal Share	Local Share	
2024	0	0	0	0	46	483	529	490	39	
Fund Totals:	\$0	\$0	\$0	\$0	\$46	\$483	\$529	\$490	\$39	

Pavement Preservation and ADA, Phase 1, Boise Area – FY2022

Regionally Significant:

Key #: 19465

Requesting Agency: ACHD

Project Year: 2022

Total Previous Expenditures: \$543

Total Programmed Cost: \$5,427

Total Cost (Prev. + Prog.): \$5,970

Project Description : Supplement the local pavement preservation program to complete pavement improvements on federal-aid roadways in the Boise Urbanized Area. Work includes improvements to adjoining sidewalks to meet Americans with Disabilities Act (ADA) requirements. Segments include: 9th Street, Idaho Street to Bannock Street; 20th Street, Lemp Street to Irene Street; 26th Street, State Street to Heron Street; Bluegrass Way, Ellens Ferry Drive to Drawbridge Drive; Drawbridge Drive, Crimson to Castle Hills Way; Turret Way, Drawbridge Drive to Castle Drive; Morris Hill Road, Liberty Street to Hartman Road; Spaulding Street, Phillippi Street to Orchard Street; Roosevelt Street, Emerald Street to Irving Street; Maple Grove Road, Interstate 84 bridge deck to Franklin Road; Amity Road, Enterprise Street to Production Street; and Enterprise Street, Amity Road to Commerce Avenue.

COMPASS PM:

Maintenance

Federal PM:



Funding Source		STBG-TMA		Program			Local Hwy - Transportation Management Area		Local Match 7.34%	
Cost Year*	Preliminary Engineering	Preliminary Engineering Consulting	Right-of-Way	Utilities	Construction Engineering	Construction	Total	Federal Share	Local Share	
2022	0	0	0	0	708	4,719	5,427	5,029	398	
Fund Totals:	\$0	\$0	\$0	\$0	\$708	\$4,719	\$5,427	\$5,029	\$398	

*PD = Preliminary Development (projects with development activity but no programmed year of construction)

Pavement Preservation and ADA, Phase 2, Boise Area – FY2022

Regionally Significant:

COMPASS PM:

Federal PM:

Key # : 20122

Maintenance

Requesting Agency: ACHD

Project Year: 2022

Total Previous Expenditures: \$233

Total Programmed Cost: \$2,326

Total Cost (Prev. + Prog.): \$2,559

Project Description : Supplement the local pavement preservation program to complete pavement improvements on a federal-aid roadway in the Boise Urbanized Area. Work includes improvements to adjoining sidewalks to meet Americans with Disabilities Act (ADA) requirements. Segment: Collister Drive, Quail Ridge Drive to North Deadend.



Funding Source		STBG-TMA		Program					Local Hwy - Transportation Management Area		Local Match 7.34%	
Cost Year*	Preliminary Engineering	Preliminary Engineering Consulting	Right-of-Way	Utilities	Construction Engineering	Construction	Total	Federal Share	Local Share			
2022	0	0	0	0	303	2,023	2,326	2,155	171			
Fund Totals:	\$0	\$0	\$0	\$0	\$303	\$2,023	\$2,326	\$2,155	\$171			

Peckham Road Intersections, Canyon County

Regionally Significant:

COMPASS PM:

Federal PM:

Key # : 22101

Congestion Reduction/System Reliability
Farmland
Community Infrastructure
Freight Movement and Economic Vitality

Requesting Agency: Golden Gate HD

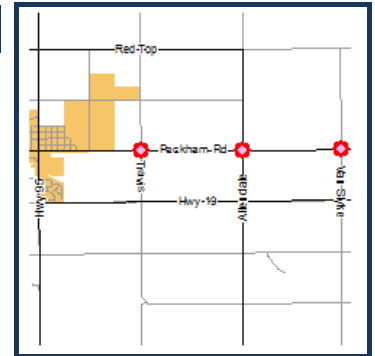
Project Year: 2022

Total Previous Expenditures: \$63

Total Programmed Cost: \$379

Total Cost (Prev. + Prog.): \$442

Project Description : Reconstruct three intersections on Peckham Road at Travis Road, Allendale Road, and Van Slyke Road, between the Cities of Wilder and Greenleaf in Canyon County. Each intersection is substandard for truck turning movements. The reconstruction will provide larger turning radii to eliminate truck off-tracking and reduce edge breakup. The intersection improvements will also allow trucks to maintain their own travel lane while making turns. All construction will adhere to current Association of Canyon County Highway District (ACCHD) standards.



Funding Source		Freight		Program					State Hwy - Freight		Local Match 7.34%	
Cost Year*	Preliminary Engineering	Preliminary Engineering Consulting	Right-of-Way	Utilities	Construction Engineering	Construction	Total	Federal Share	Local Share			
2022	0	0	0	0	0	379	379	351	28			
Fund Totals:	\$0	\$0	\$0	\$0	\$0	\$379	\$379	\$351	\$28			

*PD = Preliminary Development (projects with development activity but no programmed year of construction)

Peckham Road, US-95 to Notus Road, Canyon County

Regionally Significant:

Key #: 13964

Requesting Agency: Golden Gate HD

Project Year: 2022

Total Previous Expenditures: \$706

Total Programmed Cost: \$3,595

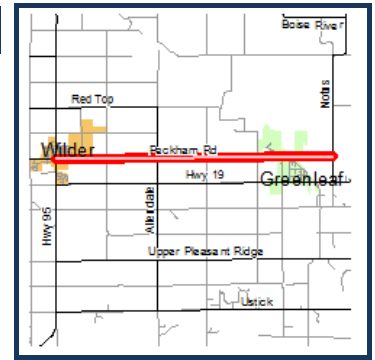
Total Cost (Prev. + Prog.): \$4,301

Project Description : Provide improvements on Peckham Road from US-95 in the City of Wilder to Notus Road in the City of Greenleaf in Canyon County, including: roadway rehabilitation, as well as curb, gutter, and sidewalk improvements within the city limits.

COMPASS PM:

- Environmental Sustainability
- Maintenance
- Farmland
- Transportation Safety
- Health

Federal PM:



Funding Source		STBG-R		Program			Local Hwy - Rural		Local Match 7.34%	
Cost Year*	Preliminary Engineering	Preliminary Engineering Consulting	Right-of-Way	Utilities	Construction Engineering	Construction	Total	Federal Share	Local Share	
2022	0	0	0	0	777	2,818	3,595	3,331	264	
Fund Totals:	\$0	\$0	\$0	\$0	\$777	\$2,818	\$3,595	\$3,331	\$264	

Pedestrian Improvements and Widening, Montana Avenue, Caldwell

Regionally Significant:

Key #: 22018

Requesting Agency: City of Caldwell

Project Year: PD

Total Previous Expenditures: \$89

Total Programmed Cost: \$636

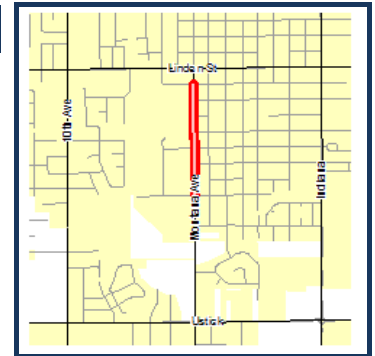
Total Cost (Prev. + Prog.): \$725

Project Description : Construct sidewalk from Syringa Middle School to Spruce Street on the west side of Montana Avenue in the City of Caldwell. Project includes pedestrian crossings and rectangular rapid flashing beacons at the Alder Street and the Spruce Street intersections across Montana Avenue.

COMPASS PM:

- Community Infrastructure
- Health
- Open Space
- Transportation Safety
- Environmental Sustainability

Federal PM:



Funding Source		STBG-U		Program			Local Hwy - Urban		Local Match 7.34%	
Cost Year*	Preliminary Engineering	Preliminary Engineering Consulting	Right-of-Way	Utilities	Construction Engineering	Construction	Total	Federal Share	Local Share	
2024	0	0	60	0	0	0	60	56	4	
PD	0	0	0	0	90	486	576	534	42	
Fund Totals:	\$0	\$0	\$60	\$0	\$90	\$486	\$636	\$589	\$47	

*PD = Preliminary Development (projects with development activity but no programmed year of construction)

Pedestrian Improvements, SH-55 (Eagle Road), Meridian

Regionally Significant:

Key #: 20542

Requesting Agency: City of Meridian

Project Year: 2025

Total Previous Expenditures: \$0

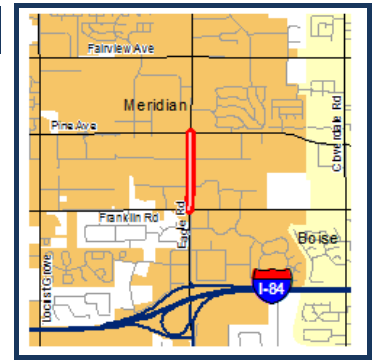
Total Programmed Cost: \$611

Total Cost (Prev. + Prog.): \$611

COMPASS PM:

- Health
- Congestion Reduction/System Reliability
- Transportation Safety
- Environmental Sustainability
- Community Infrastructure

Federal PM:



Project Description : Construct a lighted ten-foot-wide concrete multi-use pathway along the east side of State Highway 55 (Eagle Road), from Franklin Road to Pine Avenue in the City of Meridian. Reconstruct the existing sidewalk adjacent to the Shell gas station to the ten-foot width. The project will include an eight-foot separation between the roadway and pathway where possible.

Funding Source TAP-TMA			Program Local Hwy - Transportation Alternatives					Local Match 7.34%	
Cost Year*	Preliminary Engineering	Preliminary Engineering Consulting	Right-of-Way	Utilities	Construction Engineering	Construction	Total	Federal Share	Local Share
2022	11	78	0	0	0	0	89	82	7
2023	0	0	96	0	0	0	96	89	7
2025	0	0	0	0	33	385	418	387	31
Fund Totals:	\$11	\$78	\$96	\$0	\$33	\$385	\$603	\$559	\$44

Funding Source Local Participating			Program Hwy - Local Partnerships					Local Match 100.00%	
Cost Year*	Preliminary Engineering	Preliminary Engineering Consulting	Right-of-Way	Utilities	Construction Engineering	Construction	Total	Federal Share	Local Share
2025	0	0	0	0	0	4	4	0	4
Fund Totals:	\$0	\$0	\$0	\$0	\$0	\$4	\$4	\$0	\$4

Funding Source STBG-TMA			Program Local Hwy - Transportation Management Area					Local Match 7.34%	
Cost Year*	Preliminary Engineering	Preliminary Engineering Consulting	Right-of-Way	Utilities	Construction Engineering	Construction	Total	Federal Share	Local Share
2025	0	0	0	0	0	4	4	4	0
Fund Totals:	\$0	\$0	\$0	\$0	\$0	\$4	\$4	\$4	\$0

*PD = Preliminary Development (projects with development activity but no programmed year of construction)

Pedestrian Improvements, SH-55, Bristol Heights to US 20/26, Boise

Regionally Significant:

Key #: 22931

Requesting Agency: City of Boise

Project Year: PD

Total Previous Expenditures: \$0

Total Programmed Cost: \$351

Total Cost (Prev. + Prog.): \$351

COMPASS PM:

- Community Infrastructure
- Health
- Open Space
- Transportation Safety
- Environmental Sustainability

Federal PM:



Project Description : Design and construct a ten-foot shared pedestrian and bicycle pathway on the west side of State Highway 55 (Eagle Road), from Bristol Heights to US 20/26 (Chinden Boulevard) in the City of Boise.

Funding Source		TAP-TMA		Program				Local Hwy - Transportation Alternatives		Local Match 7.34%	
Cost Year*	Preliminary Engineering	Preliminary Engineering Consulting	Right-of-Way	Utilities	Construction Engineering	Construction	Total	Federal Share	Local Share		
2025	11	23	0	0	0	0	34	32	2		
PD	0	0	0	0	39	252	291	270	21		
Fund Totals:	\$11	\$23	\$0	\$0	\$39	\$252	\$325	\$301	\$24		

Funding Source		Local Participating		Program				Local Hwy - Local Partnerships		Local Match 100.00%	
Cost Year*	Preliminary Engineering	Preliminary Engineering Consulting	Right-of-Way	Utilities	Construction Engineering	Construction	Total	Federal Share	Local Share		
2025	0	26	0	0	0	0	26	0	26		
Fund Totals:	\$0	\$26	\$0	\$0	\$0	\$0	\$26	\$0	\$26		

Pedestrian Improvements, Stoddard Pathway, Nampa

Regionally Significant:

Key #: 22944

Requesting Agency: City of Nampa

Project Year: 2022

Total Previous Expenditures: \$78

Total Programmed Cost: \$414

Total Cost (Prev. + Prog.): \$492

COMPASS PM:

- Transportation Safety
- Environmental Sustainability
- Community Infrastructure
- Health
- Open Space

Federal PM:



Project Description : Extend the Stoddard Pathway from Sherman Avenue to 2nd Street South in the City of Nampa.

Funding Source		TAP-State		Program				Local Hwy - Transportation Alternatives		Local Match 7.34%	
Cost Year*	Preliminary Engineering	Preliminary Engineering Consulting	Right-of-Way	Utilities	Construction Engineering	Construction	Total	Federal Share	Local Share		
2022	0	0	0	0	66	348	414	384	30		
Fund Totals:	\$0	\$0	\$0	\$0	\$66	\$348	\$414	\$384	\$30		

*PD = Preliminary Development (projects with development activity but no programmed year of construction)

Pedestrian Improvements, US 20/26 (Chinden) at 43rd Street, Garden City

Regionally Significant:

Key #: 20549

Requesting Agency: ACHD

Project Year: 2023

Total Previous Expenditures: \$56

Total Programmed Cost: \$165

Total Cost (Prev. + Prog.): \$221

Project Description : Install a pedestrian hybrid beacon-controlled crossing on US 20/26 (Chinden Boulevard) at 43rd Street in the City of Garden City.

COMPASS PM:

Community Infrastructure
Transportation Safety
Environmental Sustainability

Federal PM:



Funding Source TAP-TMA			Program Local Hwy - Transportation Alternatives					Local Match 7.34%	
Cost Year*	Preliminary Engineering	Preliminary Engineering Consulting	Right-of-Way	Utilities	Construction Engineering	Construction	Total	Federal Share	Local Share
2023	0	0	0	0	35	130	165	153	12
Fund Totals:	\$0	\$0	\$0	\$0	\$35	\$130	\$165	\$153	\$12

Planning and Mobility Implementation, Boise Area, VRT

Regionally Significant:

Key #: 18854

Requesting Agency: Valley Regional Transit

Project Year: 2022-2026

Total Previous Expenditures: \$0

Total Programmed Cost: \$6,167

Total Cost (Prev. + Prog.): \$6,167

Project Description : Provide program support administration, short-range transit planning, and the implementation of mobility management programs for Valley Regional Transit in the Boise Urbanized Area. See Valley Regional Transit's Program of Projects for more details.

COMPASS PM:

Support

Federal PM:



Funding Source FTA 5307 LU			Program Transit Capital					Local Match 20.00%	
Cost Year*	Preliminary Engineering	Preliminary Engineering Consulting	Right-of-Way	Utilities	Construction Engineering	Construction	Total	Federal Share	Local Share
2022	0	0	0	0	0	1,173	1,173	938	235
2023	0	0	0	0	0	1,203	1,203	962	241
2024	0	0	0	0	0	1,233	1,233	986	247
2025	0	0	0	0	0	1,263	1,263	1,010	253
2026	0	0	0	0	0	1,295	1,295	1,036	259
Fund Totals:	\$0	\$0	\$0	\$0	\$0	\$6,167	\$6,167	\$4,934	\$1,233

Planning and Mobility Implementation, Nampa Area, VRT

Regionally Significant:

COMPASS PM:

Federal PM:

Key #: 18842

Support

Requesting Agency: Valley Regional Transit

Project Year: 2022-2026

Total Previous Expenditures: \$0

Total Programmed Cost: \$5,618

Total Cost (Prev. + Prog.): \$5,618

Project Description : Provide program support administration, short-range transit planning, and the implementation of a mobility management program in the Nampa Urbanized Area. See Valley Regional Transit's Program of Projects for more details.



Funding Source		FTA 5307 SU		Program				Transit Capital		Local Match 20.00%	
Cost Year*	Preliminary Engineering	Preliminary Engineering Consulting	Right-of-Way	Utilities	Construction Engineering	Construction	Total	Federal Share	Local Share		
2022	0	0	0	0	0	1,069	1,069	855	214		
2023	0	0	0	0	0	1,095	1,095	876	219		
2024	0	0	0	0	0	1,123	1,123	898	225		
2025	0	0	0	0	0	1,151	1,151	921	230		
2026	0	0	0	0	0	1,180	1,180	944	236		
Fund Totals:	\$0	\$0	\$0	\$0	\$0	\$5,618	\$5,618	\$4,494	\$1,124		

Planning, Communities in Motion Update, COMPASS

Regionally Significant:

COMPASS PM:

Federal PM:

Key #: 20271

Support

Requesting Agency: COMPASS

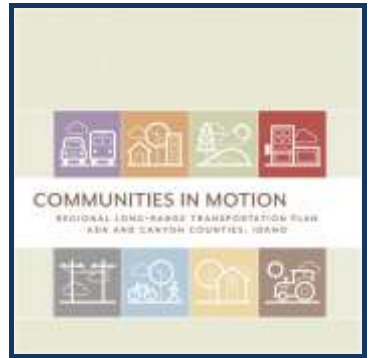
Project Year: 2023-2026

Total Previous Expenditures: \$0

Total Programmed Cost: \$636

Total Cost (Prev. + Prog.): \$636

Project Description : Update the regional long-range transportation plan. Includes: Treasure Valley Transportation Operations, Management, and ITS Plan Update; public involvement; graphics and editing; and printing.



Funding Source		STBG-TMA		Program				Local Hwy - Transportation Management Area		Local Match 7.34%	
Cost Year*	Preliminary Engineering	Preliminary Engineering Consulting	Right-of-Way	Utilities	Construction Engineering	Construction	Total	Federal Share	Local Share		
2023	0	30	0	0	0	0	30	28	2		
2024	0	253	0	0	0	0	253	234	19		
2025	0	78	0	0	0	0	78	72	6		
2026	0	275	0	0	0	0	275	255	20		
Fund Totals:	\$0	\$636	\$0	\$0	\$0	\$0	\$636	\$589	\$47		

*PD = Preliminary Development (projects with development activity but no programmed year of construction)

Planning, COMPASS

Regionally Significant:

COMPASS PM:

Federal PM:

Key #: CPA1

Support

Requesting Agency: COMPASS

Project Year: 2022-2027

Total Previous Expenditures: \$0

Total Programmed Cost: \$1,887

Total Cost (Prev. + Prog.): \$1,887

Project Description : Assist COMPASS in meeting federal transportation planning responsibilities. These projects tie to Idaho Transportation Department key numbers 19920, 20560, 21889, 22387, 22800, and NEW.



Metropolitan Planning

Funding Source		STBG-TMA		Program			Local Hwy - Transportation Management Area		Local Match 7.34%	
Cost Year*	Preliminary Engineering	Preliminary Engineering Consulting	Right-of-Way	Utilities	Construction Engineering	Construction	Total	Federal Share	Local Share	
2022	0	232	0	0	0	0	232	215	17	
2023	0	232	0	0	0	0	232	215	17	
2024	0	232	0	0	0	0	232	215	17	
2025	0	232	0	0	0	0	232	215	17	
2026	0	232	0	0	0	0	232	215	17	
2027	0	232	0	0	0	0	232	215	17	
Fund Totals:	\$0	\$1,392	\$0	\$0	\$0	\$0	\$1,392	\$1,290	\$102	

Funding Source		STBG-U		Program			Local Hwy - Urban		Local Match 7.34%	
Cost Year*	Preliminary Engineering	Preliminary Engineering Consulting	Right-of-Way	Utilities	Construction Engineering	Construction	Total	Federal Share	Local Share	
2022	0	198	0	0	0	0	198	183	15	
2024	0	99	0	0	0	0	99	92	7	
2025	0	99	0	0	0	0	99	92	7	
2026	0	99	0	0	0	0	99	92	7	
Fund Totals:	\$0	\$495	\$0	\$0	\$0	\$0	\$495	\$459	\$36	

Planning, High Capacity Corridor Alternatives Analysis, COMPASS

Regionally Significant:

COMPASS PM:

Federal PM:

Key #: 13046

Support

Requesting Agency: COMPASS

Project Year: PD

Total Previous Expenditures: \$0

Total Programmed Cost: \$1,000

Total Cost (Prev. + Prog.): \$1,000

Project Description : Study to identify and analyze options to improve mobility in a priority corridor to be determined in the regional long-range transportation plan. The study will evaluate all reasonable public transportation alternatives for high capacity service.



Funding Source		STBG-TMA		Program			Local Hwy - Transportation Management Area		Local Match 7.34%	
Cost Year*	Preliminary Engineering	Preliminary Engineering Consulting	Right-of-Way	Utilities	Construction Engineering	Construction	Total	Federal Share	Local Share	
PD	0	1,000	0	0	0	0	1,000	927	73	
Fund Totals:	\$0	\$1,000	\$0	\$0	\$0	\$0	\$1,000	\$927	\$73	

*PD = Preliminary Development (projects with development activity but no programmed year of construction)

Planning, Metropolitan Planning Funds, COMPASS

Regionally Significant:

COMPASS PM:

Federal PM:

Key #: CPA2

Support

Requesting Agency: COMPASS

Project Year: 2022-2025

Total Previous Expenditures: \$0

Total Programmed Cost: \$6,120

Total Cost (Prev. + Prog.): \$6,120

Project Description : Metropolitan planning organization (MPO) planning funds from the Federal Highway Administration and Federal Transit Administration. These projects tie to Idaho Transportation Department key numbers 19144, 20640, 22108, 22494, 22998 and NEW.



Metropolitan Planning

Funding Source		FTA 5303		Program			Transit Capital		Local Match 7.34%	
Cost Year*	Preliminary Engineering	Preliminary Engineering Consulting	Right-of-Way	Utilities	Construction Engineering	Construction	Total	Federal Share	Local Share	
2022	0	337	0	0	0	0	337	312	25	
2023	0	337	0	0	0	0	337	312	25	
2024	0	337	0	0	0	0	337	312	25	
2025	0	337	0	0	0	0	337	312	25	
Fund Totals:	\$0	\$1,348	\$0	\$0	\$0	\$0	\$1,348	\$1,249	\$99	

Funding Source		Metropolitan Planning		Program			Hwy - Metropolitan Planning		Local Match 7.34%	
Cost Year*	Preliminary Engineering	Preliminary Engineering Consulting	Right-of-Way	Utilities	Construction Engineering	Construction	Total	Federal Share	Local Share	
2022	0	1,193	0	0	0	0	1,193	1,105	88	
2023	0	1,193	0	0	0	0	1,193	1,105	88	
2024	0	1,193	0	0	0	0	1,193	1,105	88	
2025	0	1,193	0	0	0	0	1,193	1,105	88	
Fund Totals:	\$0	\$4,772	\$0	\$0	\$0	\$0	\$4,772	\$4,422	\$350	

Railroad Crossing, Benjamin Lane, Boise

Regionally Significant:

COMPASS PM:

Federal PM:

Key #: 20537

Transportation Safety

Community Infrastructure

Requesting Agency: ACHD

Project Year: 2022

Total Previous Expenditures: \$20

Total Programmed Cost: \$310

Total Cost (Prev. + Prog.): \$330

Project Description : Install crossing signal, including constant warning detection, at the Boise Valley Railroad crossing at Benjamin Lane in the City of Boise. Local match from State Rail Protection Account.



Funding Source		Fed RRX		Program			Hwy Safety - Federal Rail		Local Match 10.00%	
Cost Year*	Preliminary Engineering	Preliminary Engineering Consulting	Right-of-Way	Utilities	Construction Engineering	Construction	Total	Federal Share	Local Share	
2022	0	0	0	0	0	310	310	279	31	
Fund Totals:	\$0	\$0	\$0	\$0	\$0	\$310	\$310	\$279	\$31	

Railroad Crossing, Lemp Lane, Canyon County

Regionally Significant:

Key #: 20358

Requesting Agency: Notus-Parma Highway District

Project Year: 2024

Total Previous Expenditures: \$0

Total Programmed Cost: \$255

Total Cost (Prev. + Prog.): \$255

Project Description : Install signals and gates at the Union Pacific railroad crossing at Lemp Lane in Canyon County between the Cities of Parma and Notus. Local match from State Rail Protection Account.

COMPASS PM:

Transportation Safety

Farmland

Community Infrastructure

Federal PM:



Funding Source		Program					Local Match 10.00%			
Cost Year*	Fed RRX	Preliminary Engineering	Preliminary Engineering Consulting	Right-of-Way	Utilities	Construction Engineering	Construction	Total	Federal Share	Local Share
2024		5	0	0	0	0	250	255	230	26
Fund Totals:		\$5	\$0	\$0	\$0	\$0	\$250	\$255	\$230	\$26

Railroad Crossing, Look Lane, Caldwell

Regionally Significant:

Key #: 20355

Requesting Agency: Notus-Parma Highway District

Project Year: 2022

Total Previous Expenditures: \$90

Total Programmed Cost: \$500

Total Cost (Prev. + Prog.): \$590

Project Description : Relocate and realign the Union Pacific Railroad crossing at Look Lane in the City of Caldwell. Work includes adding a signal, gates, planking, and a cabinet for electronics. Local match from State Rail Protection Account.

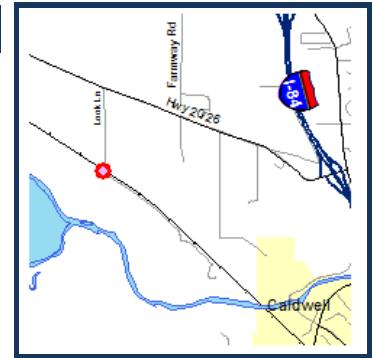
COMPASS PM:

Maintenance

Transportation Safety

Farmland

Federal PM:



Funding Source		Program					Local Match 10.00%			
Cost Year*	Fed RRX	Preliminary Engineering	Preliminary Engineering Consulting	Right-of-Way	Utilities	Construction Engineering	Construction	Total	Federal Share	Local Share
2022		0	0	0	0	0	500	500	450	50
Fund Totals:		\$0	\$0	\$0	\$0	\$0	\$500	\$500	\$450	\$50

*PD = Preliminary Development (projects with development activity but no programmed year of construction)

Railroad Crossing, Old Fort Boise Road, Canyon County

Regionally Significant:

COMPASS PM:

Federal PM:

Key # : 20606

Transportation Safety

Requesting Agency: Notus-Parma Highway District

Farmland

Community Infrastructure

Project Year: 2023

Total Previous Expenditures: \$0

Total Programmed Cost: \$250

Total Cost (Prev. + Prog.): \$250

Project Description : Install signals and gates at the Union Pacific railroad crossing at Old Fort Boise Road in Canyon County, west of the City of Parma. Local match from State Rail Protection Account.



Funding Source		Fed RRX		Program				Hwy Safety - Federal Rail		Local Match 10.00%	
Cost Year*	Preliminary Engineering	Preliminary Engineering Consulting	Right-of-Way	Utilities	Construction Engineering	Construction	Total	Federal Share	Local Share		
2022	10	0	0	10	0	0	20	18	2		
2023	0	0	0	0	0	230	230	207	23		
Fund Totals:	\$10	\$0	\$0	\$10	\$0	\$230	\$250	\$225	\$25		

Roadway and ADA Improvements, Boise Area – FY2024

Regionally Significant:

COMPASS PM:

Federal PM:

Key # : 20674

Maintenance

Requesting Agency: ACHD

Project Year: 2024

Total Previous Expenditures: \$29

Total Programmed Cost: \$8,150

Total Cost (Prev. + Prog.): \$8,179

Project Description : Supplement the local pavement preservation program to complete pavement improvements on federal-aid roadways in the Boise Urbanized Area. Work includes improvements to adjoining sidewalks to meet Americans with Disabilities Act (ADA) requirements. Segments will be determined prior to the obligation in the design year.



Funding Source		Local Participating		Program				Hwy - Local Partnerships		Local Match 100.00%	
Cost Year*	Preliminary Engineering	Preliminary Engineering Consulting	Right-of-Way	Utilities	Construction Engineering	Construction	Total	Federal Share	Local Share		
2022	0	178	0	0	0	0	178	0	178		
2023	0	0	750	0	0	0	750	0	750		
Fund Totals:	\$0	\$178	\$750	\$0	\$0	\$0	\$928	\$0	\$928		

Funding Source		STBG-TMA		Program				Local Hwy - Transportation Management Area		Local Match 7.34%	
Cost Year*	Preliminary Engineering	Preliminary Engineering Consulting	Right-of-Way	Utilities	Construction Engineering	Construction	Total	Federal Share	Local Share		
2022	0	1,055	0	0	0	0	1,055	978	77		
2024	0	0	0	0	804	5,363	6,167	5,714	453		
Fund Totals:	\$0	\$1,055	\$0	\$0	\$804	\$5,363	\$7,222	\$6,692	\$530		

*PD = Preliminary Development (projects with development activity but no programmed year of construction)

Roadway and ADA Improvements, Boise Area – FY2025

Regionally Significant:

COMPASS PM:

Federal PM:

Key # : 21896

Maintenance

Requesting Agency: ACHD

Project Year: 2025

Total Previous Expenditures: \$0

Total Programmed Cost: \$8,069

Total Cost (Prev. + Prog.): \$8,069



Project Description : Supplement the local pavement preservation program to complete pavement improvements on federal-aid roadways in the Boise Urbanized Area. Work includes improvements to adjoining sidewalks to meet Americans with Disabilities Act (ADA) requirements. Segments will be determined prior to the obligation in the design year.

Funding Source		Local Participating		Program			Hwy - Local Partnerships		Local Match 100.00%	
Cost Year*	Preliminary Engineering	Preliminary Engineering Consulting	Right-of-Way	Utilities	Construction Engineering	Construction	Total	Federal Share	Local Share	
2022	29	0	0	0	0	0	29	0	29	
2023	0	471	0	0	0	0	471	0	471	
Fund Totals:	\$29	\$471	\$0	\$0	\$0	\$0	\$500	\$0	\$500	

Funding Source		STBG-TMA		Program			Local Hwy - Transportation Management Area		Local Match 7.34%	
Cost Year*	Preliminary Engineering	Preliminary Engineering Consulting	Right-of-Way	Utilities	Construction Engineering	Construction	Total	Federal Share	Local Share	
2023	0	744	0	0	0	0	744	689	55	
2024	0	0	750	0	0	0	750	695	55	
2025	0	0	0	0	792	5,283	6,075	5,629	446	
Fund Totals:	\$0	\$744	\$750	\$0	\$792	\$5,283	\$7,569	\$7,013	\$556	

*PD = Preliminary Development (projects with development activity but no programmed year of construction)

Roadway and ADA Improvements, Boise Area – FY2026

Regionally Significant:

COMPASS PM:

Federal PM:

Key # : 22390

Maintenance

Requesting Agency: ACHD

Project Year: 2026

Total Previous Expenditures: \$0

Total Programmed Cost: \$8,189

Total Cost (Prev. + Prog.): \$8,189

Project Description : Supplement the local pavement preservation program to complete pavement improvements on federal-aid roadways in the Boise Urbanized Area. Work includes improvements to adjoining sidewalks to meet Americans with Disabilities Act (ADA) requirements. Segments will be determined prior to the obligation in the design year.



Funding Source		Local Participating		Program			Hwy - Local Partnerships		Local Match 100.00%	
Cost Year*	Preliminary Engineering	Preliminary Engineering Consulting	Right-of-Way	Utilities	Construction Engineering	Construction	Total	Federal Share	Local Share	
2023	29	0	0	0	0	0	29	0	29	
Fund Totals:	\$29	\$0	\$0	\$0	\$0	\$0	\$29	\$0	\$29	

Funding Source		STBG-TMA		Program			Local Hwy - Transportation Management Area		Local Match 7.34%	
Cost Year*	Preliminary Engineering	Preliminary Engineering Consulting	Right-of-Way	Utilities	Construction Engineering	Construction	Total	Federal Share	Local Share	
2024	0	1,235	0	0	0	0	1,235	1,144	91	
2025	0	0	750	0	0	0	750	695	55	
2026	0	0	0	0	805	5,370	6,175	5,722	453	
Fund Totals:	\$0	\$1,235	\$750	\$0	\$805	\$5,370	\$8,160	\$7,561	\$599	

*PD = Preliminary Development (projects with development activity but no programmed year of construction)

Roadway and ADA Improvements, Boise Area – FY2027

Regionally Significant:

COMPASS PM:

Federal PM:

Key # : 22816

Maintenance

Requesting Agency: ACHD

Project Year: 2027

Total Previous Expenditures: \$0

Total Programmed Cost: \$7,740

Total Cost (Prev. + Prog.): \$7,740

Project Description : Supplement the local pavement preservation program to complete pavement improvements on federal-aid roadways in the Boise Urbanized Area. Work includes improvements to adjoining sidewalks to meet Americans with Disabilities Act (ADA) requirements. Segments will be determined prior to the obligation in the design year.



Funding Source		Local Participating		Program			Hwy - Local Partnerships		Local Match 100.00%	
Cost Year*	Preliminary Engineering	Preliminary Engineering Consulting	Right-of-Way	Utilities	Construction Engineering	Construction	Total	Federal Share	Local Share	
2024	29	0	0	0	0	0	29	0	29	
Fund Totals:	\$29	\$0	\$0	\$0	\$0	\$0	\$29	\$0	\$29	

Funding Source		STBG-TMA		Program			Local Hwy - Transportation Management Area		Local Match 7.34%	
Cost Year*	Preliminary Engineering	Preliminary Engineering Consulting	Right-of-Way	Utilities	Construction Engineering	Construction	Total	Federal Share	Local Share	
2025	0	1,160	0	0	0	0	1,160	1,075	85	
2026	0	0	750	0	0	0	750	695	55	
2027	0	0	0	0	756	5,045	5,801	5,375	426	
Fund Totals:	\$0	\$1,160	\$750	\$0	\$756	\$5,045	\$7,711	\$7,145	\$566	

*PD = Preliminary Development (projects with development activity but no programmed year of construction)

Roadway and ADA Improvements, Boise Area – FY2028

Regionally Significant:

COMPASS PM:

Federal PM:

Key #: NEW2

Requesting Agency: ACHD

Project Year: 2028

Total Previous Expenditures: \$0

Total Programmed Cost: \$6,155

Total Cost (Prev. + Prog.): \$6,155

Project Description : Supplement the local pavement preservation program to complete pavement improvements on federal-aid roadways in the Boise Urbanized Area. Work includes improvements to adjoining sidewalks to meet Americans with Disabilities Act (ADA) requirements. Segments will be determined prior to the obligation in the design year.



Funding Source		Local Participating		Program			Hwy - Local Partnerships		Local Match 100.00%	
Cost Year*	Preliminary Engineering	Preliminary Engineering Consulting	Right-of-Way	Utilities	Construction Engineering	Construction	Total	Federal Share	Local Share	
2025	29	0	0	0	0	0	29	0	29	
Fund Totals:	\$29	\$0	\$0	\$0	\$0	\$0	\$29	\$0	\$29	

Funding Source		STBG-TMA		Program			Local Hwy - Transportation Management Area		Local Match 7.34%	
Cost Year*	Preliminary Engineering	Preliminary Engineering Consulting	Right-of-Way	Utilities	Construction Engineering	Construction	Total	Federal Share	Local Share	
2026	0	896	0	0	0	0	896	830	66	
2028	0	0	750	0	583	3,897	5,230	4,846	384	
Fund Totals:	\$0	\$896	\$750	\$0	\$583	\$3,897	\$6,126	\$5,676	\$450	

*PD = Preliminary Development (projects with development activity but no programmed year of construction)

Roadway and ADA Improvements, Part 1, Boise Area – FY2023

Regionally Significant:

COMPASS PM:

Federal PM:

Key # : 20259

Maintenance

Requesting Agency: ACHD

Project Year: 2023

Total Previous Expenditures: \$538

Total Programmed Cost: \$7,015

Total Cost (Prev. + Prog.): \$7,553



Project Description : Supplement the local pavement preservation program to complete pavement improvements on federal-aid roadways in the Boise Urbanized Area. Work includes improvements to adjoining sidewalks to meet Americans with Disabilities Act (ADA) requirements. Segments include: Allumbaugh Street, Franklin Road to Fairmont Street; Cole Road, Ustick Road to Mountain View Drive; Edgewood Road, Harvey Street to Floating Feather Road; Goldenrod Avenue, western terminus to Cloverdale Road; McDermott Road, McMillan Road to Chinden Boulevard; Orchard Street, Emerald Street to Fairview Avenue and Fairview Avenue to Chinden Boulevard.

Funding Source		TAP-TMA		Program				Local Hwy - Transportation Alternatives		Local Match 7.34%	
Cost Year*	Preliminary Engineering	Preliminary Engineering Consulting	Right-of-Way	Utilities	Construction Engineering	Construction	Total	Federal Share	Local Share		
2022	0	136	0	0	0	0	136	126	10		
Fund Totals:	\$0	\$136	\$0	\$0	\$0	\$0	\$136	\$126	\$10		

Funding Source		Local Participating		Program				Hwy - Local Partnerships		Local Match 100.00%	
Cost Year*	Preliminary Engineering	Preliminary Engineering Consulting	Right-of-Way	Utilities	Construction Engineering	Construction	Total	Federal Share	Local Share		
2022	0	0	500	0	0	0	500	0	500		
2023	0	0	0	0	0	1,000	1,000	0	1,000		
Fund Totals:	\$0	\$0	\$500	\$0	\$0	\$1,000	\$1,500	\$0	\$1,500		

Funding Source		STBG-TMA		Program				Local Hwy - Transportation Management Area		Local Match 7.34%	
Cost Year*	Preliminary Engineering	Preliminary Engineering Consulting	Right-of-Way	Utilities	Construction Engineering	Construction	Total	Federal Share	Local Share		
2023	0	0	0	0	702	4,677	5,379	4,984	395		
Fund Totals:	\$0	\$0	\$0	\$0	\$702	\$4,677	\$5,379	\$4,984	\$395		

*PD = Preliminary Development (projects with development activity but no programmed year of construction)

Roadway and ADA Improvements, Part 2, Boise Area – FY2023

Regionally Significant:

COMPASS PM:

Federal PM:

Key #: 19993

Maintenance

Requesting Agency: ACHD

Project Year: 2023

Total Previous Expenditures: \$25

Total Programmed Cost: \$3,055

Total Cost (Prev. + Prog.): \$3,080

Project Description : Supplement the local pavement preservation program to complete pavement improvements on federal-aid roadways in the Boise Urbanized Area. Work includes improvements to adjoining sidewalks to meet Americans with Disabilities Act (ADA) requirements. Segment includes: Beacon Light Road, State Highway 16 to Ballentyne Lane.



Funding Source		Local Participating		Program Hwy - Local Partnerships			Local Match 100.00%		
Cost Year*	Preliminary Engineering	Preliminary Engineering Consulting	Right-of-Way	Utilities	Construction Engineering	Construction	Total	Federal Share	Local Share
2022	0	0	250	0	0	0	250	0	250
2023	0	0	0	0	0	500	500	0	500
Fund Totals:	\$0	\$0	\$250	\$0	\$0	\$500	\$750	\$0	\$750

Funding Source		STBG-TMA		Program Local Hwy - Transportation Management Area			Local Match 7.34%		
Cost Year*	Preliminary Engineering	Preliminary Engineering Consulting	Right-of-Way	Utilities	Construction Engineering	Construction	Total	Federal Share	Local Share
2023	0	0	0	0	300	2,005	2,305	2,136	169
Fund Totals:	\$0	\$0	\$0	\$0	\$300	\$2,005	\$2,305	\$2,136	\$169

Roadway and ADA Improvements, Part 3, Boise Area – FY2023

Regionally Significant:

COMPASS PM:

Federal PM:

Key #: 20080

Maintenance

Requesting Agency: ACHD

Project Year: 2023

Total Previous Expenditures: \$80

Total Programmed Cost: \$300

Total Cost (Prev. + Prog.): \$380

Project Description : Supplement the local pavement preservation program to complete pavement improvements on federal-aid roadways in the Boise Urbanized Area. Work includes improvements to adjoining sidewalks to meet Americans with Disabilities Act (ADA) requirements. Segments include: Idaho Street, 16th Street to Broadway Avenue; 16th Street, Front Street to State Street; Bannock Street, 16th Street to 15th Street and 9th to 2nd; and 15th Street, Front Street to State Street.



Funding Source		Local Participating		Program Hwy - Local Partnerships			Local Match 100.00%		
Cost Year*	Preliminary Engineering	Preliminary Engineering Consulting	Right-of-Way	Utilities	Construction Engineering	Construction	Total	Federal Share	Local Share
2023	0	0	0	0	0	300	300	0	300
Fund Totals:	\$0	\$0	\$0	\$0	\$0	\$300	\$300	\$0	\$300

*PD = Preliminary Development (projects with development activity but no programmed year of construction)

Safety Audit, Signalized Intersections, Nampa

Regionally Significant:

COMPASS PM:

Federal PM:

Key #: ORN23293

Requesting Agency: City of Nampa

Project Year: 2023

Total Previous Expenditures: \$0

Total Programmed Cost: \$66

Total Cost (Prev. + Prog.): \$66

Project Description : To conduct a road safety audit on multiple intersections to identify deficiencies, as well as low-cost, systemic changes to signal operations to decrease the quantity and severity of pedestrian versus vehicle crashes. The following locations are included in this study: 6th Street North at Northside Boulevard; 16th Avenue at 3rd Street North, 2nd Street South, 3rd Street South, and 7th Street South; Midland Boulevard at Orchard Avenue and Lone Star Road.



Funding Source		HSIP (Local)		Program				Hwy Safety - Local		Local Match 7.34%	
Cost Year*	Preliminary Engineering	Preliminary Engineering Consulting	Right-of-Way	Utilities	Construction Engineering	Construction	Total	Federal Share	Local Share		
2023	11	55	0	0	0	0	66	61	5		
Fund Totals:	\$11	\$55	\$0	\$0	\$0	\$0	\$66	\$61	\$5		

SH-16, I-84 to US 20/26 and SH-44, Ada and Canyon Counties

Regionally Significant:

COMPASS PM:

Federal PM:

Key #: 20788

Support

Requesting Agency: ITD

Project Year: 2019-2021

Total Previous Expenditures: \$133,282

Total Programmed Cost: \$170,000

Total Cost (Prev. + Prog.): \$303,282

Project Description : Preliminary engineering, right-of-way acquisition, and construction to extend State Highway 16 between Interstate 84 and US Highway 20/26 (Chinden Boulevard) and State Highway 44 (State Street) in Ada and Canyon Counties. Construction projects will be split out once the phasing is determined.



Funding Source		TECM		Program				State Hwy - Safety & Capacity (Capacity)		Local Match 100.00%	
Cost Year*	Preliminary Engineering	Preliminary Engineering Consulting	Right-of-Way	Utilities	Construction Engineering	Construction	Total	Federal Share	Local Share		
2022	0	0	0	0	0	170,000	170,000	0	170,000		
Fund Totals:	\$0	\$0	\$0	\$0	\$0	\$170,000	\$170,000	\$0	\$170,000		

*PD = Preliminary Development (projects with development activity but no programmed year of construction)

SH-21, Technology Way to Surprise Way, Boise

Regionally Significant:

Key #: 20428

Requesting Agency: ITD

Project Year: 2022

Total Previous Expenditures: \$150

Total Programmed Cost: \$4,000

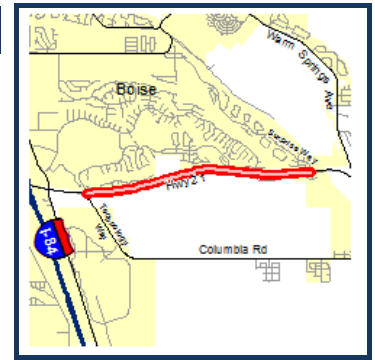
Total Cost (Prev. + Prog.): \$4,150

Project Description : Widen State Highway 21 from Technology Way (near Micron) to Surprise Way (just west of the Boise River Bridge) in the City of Boise. The project includes two 12-foot travel lanes, a continuous 14-foot center turn lane, and two 6-foot shoulders.

COMPASS PM:

Congestion Reduction/System Reliability
Transportation Safety

Federal PM:



Funding Source		HB132 and HB312		Program				State Hwy - Safety & Capacity (Safety)		Local Match 100.00%	
Cost Year*	Preliminary Engineering	Preliminary Engineering Consulting	Right-of-Way	Utilities	Construction Engineering	Construction	Construction	Total	Federal Share	Local Share	
2022	0	0	0	0	500	3,500		4,000	0	4,000	
Fund Totals:	\$0	\$0	\$0	\$0	\$500	\$3,500		\$4,000	\$0	\$4,000	

SH-44 (State Street), Palmer Lane Intersection Improvements, Star

Regionally Significant:

Key #: 22718

Requesting Agency: Private Developer

Project Year: 2027

Total Previous Expenditures: \$70

Total Programmed Cost: \$780

Total Cost (Prev. + Prog.): \$850

Project Description : Install a traffic signal at the State Highway 44 (State Street) and Palmer Lane intersection in the City of Star to improve safety and mobility.

COMPASS PM:

Congestion Reduction/System Reliability
Transportation Safety
Community Infrastructure

Federal PM:



Funding Source		Local (Regionally Significant)		Program				Hwy - Local Partnerships		Local Match 100.00%	
Cost Year*	Preliminary Engineering	Preliminary Engineering Consulting	Right-of-Way	Utilities	Construction Engineering	Construction	Construction	Total	Federal Share	Local Share	
2027	0	0	0	0	85	695		780	0	780	
Fund Totals:	\$0	\$0	\$0	\$0	\$85	\$695		\$780	\$0	\$780	

SH-44 (State Street), SH-16 to Linder Road, Ada County

Regionally Significant:

Key #: 20266

Requesting Agency: ITD

Project Year: 2023

Total Previous Expenditures: \$463

Total Programmed Cost: \$8,500

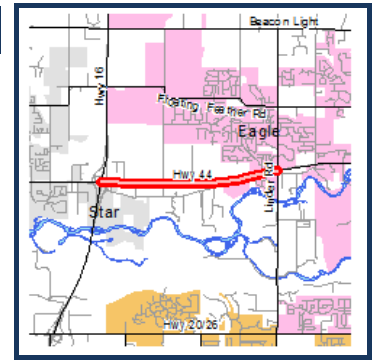
Total Cost (Prev. + Prog.): \$8,963

Project Description : Add an additional westbound and eastbound lane to improve congestion and reduce crashes along State Highway 44 (State Street), from State Highway 16 to Linder Road near the City of Eagle.

COMPASS PM:

Congestion Reduction/System Reliability
 Freight Movement and Economic Vitality
 Transportation Safety
 Community Infrastructure

Federal PM:



Funding Source		TECM		Program				State Hwy - Safety & Capacity (Capacity)		Local Match 100.00%	
Cost Year*	Preliminary Engineering	Preliminary Engineering Consulting	Right-of-Way	Utilities	Construction Engineering	Construction	Total	Federal Share	Local Share		
2023	0	0	0	0	750	7,750	8,500	0	8,500		
Fund Totals:	\$0	\$0	\$0	\$0	\$750	\$7,750	\$8,500	\$0	\$8,500		

SH-44 (State Street), Star Road to SH-16, Ada County

Regionally Significant:

Key #: 20574

Requesting Agency: ITD

Project Year: 2024

Total Previous Expenditures: \$1,461

Total Programmed Cost: \$10,749

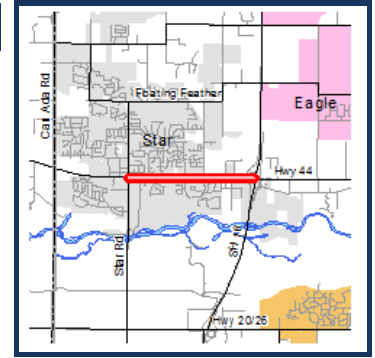
Total Cost (Prev. + Prog.): \$12,210

Project Description : Widen State Highway 44 (State Street) from Star Road to State Highway 16 in Ada County. An additional lane in both directions will alleviate congestion issues and improve safety.

COMPASS PM:

Congestion Reduction/System Reliability
 Freight Movement and Economic Vitality
 Transportation Safety
 Community Infrastructure

Federal PM:



Funding Source		TECM		Program				State Hwy - Safety & Capacity (Capacity)		Local Match 100.00%	
Cost Year*	Preliminary Engineering	Preliminary Engineering Consulting	Right-of-Way	Utilities	Construction Engineering	Construction	Total	Federal Share	Local Share		
2024	0	0	0	175	768	9,806	10,749	0	10,749		
Fund Totals:	\$0	\$0	\$0	\$175	\$768	\$9,806	\$10,749	\$0	\$10,749		

*PD = Preliminary Development (projects with development activity but no programmed year of construction)

SH-44, RWIS near SH-16, Ada County

Regionally Significant:

COMPASS PM:

Federal PM:

Key #: ORN23182

Requesting Agency: ITD

Project Year: 2024

Total Previous Expenditures: \$0

Total Programmed Cost: \$500

Total Cost (Prev. + Prog.): \$500

Project Description : Install a road weather information system (RWIS) on State Highway 44 just east of State Highway 16 to collect, process, and provide weather information to promote safety for the traveling public.



Funding Source	State	Program						Total	Local Match 100.00%	
		State Highway - Safety	Right-of-Way	Utilities	Construction Engineering	Construction	Federal Share		Local Share	
Cost Year*	Preliminary Engineering	Preliminary Engineering Consulting								
2023	25	0	0	0	0	0	25	0	25	
2024	0	0	0	0	23	452	475	0	475	
Fund Totals:	\$25	\$0	\$0	\$0	\$23	\$452	\$500	\$0	\$500	

SH-45 and Locust Lane Intersection, Nampa

Regionally Significant:

COMPASS PM:

Federal PM:

Key #: 22717

Congestion Reduction/System Reliability
Transportation Safety
Community Infrastructure
Housing

Requesting Agency: ITD

Project Year: 2027

Total Previous Expenditures: \$20

Total Programmed Cost: \$2,668

Total Cost (Prev. + Prog.): \$2,688

Project Description : Install a traffic signal at State Highway 45 and Locust Lane in the City of Nampa to improve safety.



Funding Source	State	Program						Total	Local Match 100.00%	
		State Hwy - Safety & Capacity (Capacity)	Right-of-Way	Utilities	Construction Engineering	Construction	Federal Share		Local Share	
Cost Year*	Preliminary Engineering	Preliminary Engineering Consulting								
2022	147	0	0	0	0	0	147	0	147	
2023	0	0	147	0	0	0	147	0	147	
2027	0	0	0	0	200	1,554	1,754	0	1,754	
Fund Totals:	\$147	\$0	\$147	\$0	\$200	\$1,554	\$2,048	\$0	\$2,048	

Funding Source	Local Participating	Program						Total	Local Match 100.00%	
		Hwy - Local Partnerships	Right-of-Way	Utilities	Construction Engineering	Construction	Federal Share		Local Share	
Cost Year*	Preliminary Engineering	Preliminary Engineering Consulting								
2023	0	0	620	0	0	0	620	0	620	
Fund Totals:	\$0	\$0	\$620	\$0	\$0	\$0	\$620	\$0	\$620	

SH-45, SH-78 to Deer Flat Road, Canyon and Owyhee Counties

Regionally Significant:

Key #: 21849

Requesting Agency: ITD

Project Year: 2022

Total Previous Expenditures: \$520

Total Programmed Cost: \$9,509

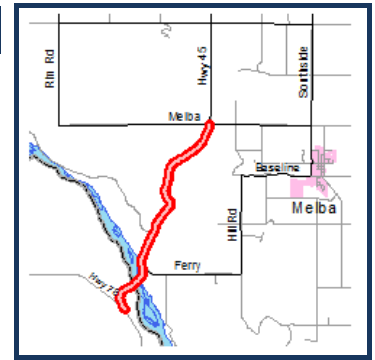
Total Cost (Prev. + Prog.): \$10,029

Project Description : Reconstruct State Highway 45 from the junction of State Highway 78, just across the Snake River in Owyhee County, to Melba Road in Canyon County. Work also includes a mill and inlay treatment on State Highway 45 from Melba Road to Deer Flat Road. These treatments will rebuild the structural capacity of the pavement. (82% Canyon County and 17% Owyhee County)

COMPASS PM:

Maintenance
Farmland

Federal PM:



Funding Source		NHPP		Program				State Hwy - Restoration		Local Match 7.34%	
Cost Year*	Preliminary Engineering	Preliminary Engineering Consulting	Right-of-Way	Utilities	Construction Engineering	Construction	Total	Federal Share	Local Share		
2022	0	0	0	0	266	9,243	9,509	8,811	698		
Fund Totals:	\$0	\$0	\$0	\$0	\$266	\$9,243	\$9,509	\$8,811	\$698		

SH-55 (Eagle Road), I-84 to SH-44, Meridian to Eagle

Regionally Significant:

Key #: 22665

Requesting Agency: ITD

Project Year: 2022

Total Previous Expenditures: \$0

Total Programmed Cost: \$9,103

Total Cost (Prev. + Prog.): \$9,103

Project Description : Rehabilitate the pavement on State Highway 55 (Eagle Road), from Interstate 84 in the City of Meridian to State Highway 44 (State Street) in the City of Eagle, to improve ride quality and extend pavement life.

COMPASS PM:

Maintenance

Federal PM:



Funding Source		NHPP		Program				State Hwy - Restoration		Local Match 100.00%	
Cost Year*	Preliminary Engineering	Preliminary Engineering Consulting	Right-of-Way	Utilities	Construction Engineering	Construction	Total	Federal Share	Local Share		
2022	0	0	0	0	1,103	8,000	9,103	0	9,103		
Fund Totals:	\$0	\$0	\$0	\$0	\$1,103	\$8,000	\$9,103	\$0	\$9,103		

SH-55 (Karcher Road), Indiana Avenue to Middleton Road, Construction, Canyon

Regionally Significant:

Key #: 22715

Requesting Agency: ITD

Project Year: 2027

Total Previous Expenditures: \$472

Total Programmed Cost: \$20,856

Total Cost (Prev. + Prog.): \$21,328

Project Description : Widen State Highway 55 (Karcher Road) from Indiana Avenue to Lake Avenue to Middleton Road in the Cities of Caldwell and Nampa. The project will add one travel lane in each direction to improve mobility and reduce crashes along the corridor. Design is shown under Key Number 21867.

COMPASS PM:

Congestion Reduction/System Reliability
 Transportation Safety
 Freight Movement and Economic Vitality
 Community Infrastructure

Federal PM:



Funding Source		State	Program					State Hwy - Safety & Capacity (Capacity)		Local Match 100.00%	
Cost Year*	Preliminary Engineering	Preliminary Engineering Consulting	Right-of-Way	Utilities	Construction Engineering	Construction	Total	Federal Share	Local Share		
2022	50	0	0	0	0	0	50	0	50		
2027	0	0	0	0	2,350	18,456	20,806	0	20,806		
Fund Totals:	\$50	\$0	\$0	\$0	\$2,350	\$18,456	\$20,856	\$0	\$20,856		

SH-55 (Karcher Road), Indiana Avenue to Middleton Road, Design, Canyon

Regionally Significant:

Key #: 21867

Requesting Agency: ITD

Project Year: 2025

Total Previous Expenditures: \$550

Total Programmed Cost: \$16,969

Total Cost (Prev. + Prog.): \$17,519

Project Description : Widen State Highway 55 (Karcher Road) from Indiana Avenue, to Lake Avenue to Middleton Road in the Cities of Caldwell and Nampa. The project will add one travel lane in each direction to improve mobility and reduce crashes along the corridor. Construction is shown under Key Number 22715.

COMPASS PM:

Congestion Reduction/System Reliability
 Transportation Safety
 Freight Movement and Economic Vitality
 Community Infrastructure

Federal PM:



Funding Source		TECM	Program					State Hwy - Safety & Capacity (Capacity)		Local Match 100.00%	
Cost Year*	Preliminary Engineering	Preliminary Engineering Consulting	Right-of-Way	Utilities	Construction Engineering	Construction	Total	Federal Share	Local Share		
2022	929	250	0	0	0	0	1,179	0	1,179		
2023	0	4,276	8,077	0	0	0	12,353	0	12,353		
2025	0	0	3,437	0	0	0	3,437	0	3,437		
Fund Totals:	\$929	\$4,526	\$11,514	\$0	\$0	\$0	\$16,969	\$0	\$16,969		

*PD = Preliminary Development (projects with development activity but no programmed year of construction)

SH-55, Indiana Avenue to 10th Avenue, Canyon County

Regionally Significant:

COMPASS PM:

Federal PM:

Key #: ORN23184

Requesting Agency: ITD

Project Year: 2028

Total Previous Expenditures: \$0

Total Programmed Cost: \$23,139

Total Cost (Prev. + Prog.): \$23,139

Project Description : Widen State Highway 55 from Indiana Avenue to 10th Avenue in Canyon County to improve safety and mobility. Project includes intelligent transportation system improvements (ITS).



Funding Source		Program						Local Match 100.00%	
State	State Hwy - Safety & Capacity (Capacity)								
Cost Year*	Preliminary Engineering	Preliminary Engineering Consulting	Right-of-Way	Utilities	Construction Engineering	Construction	Total	Federal Share	Local Share
2022	131	666	0	0	0	0	797	0	797
2023	131	666	0	0	0	0	797	0	797
2024	0	0	6,302	0	0	0	6,302	0	6,302
2028	0	0	0	0	1,479	13,764	15,243	0	15,243
Fund Totals:	\$262	\$1,332	\$6,302	\$0	\$1,479	\$13,764	\$23,139	\$0	\$23,139

SH-55, Pavement Preservation, Owyhee and Canyon Counties

Regionally Significant:

COMPASS PM:

Federal PM:

Key #: ORN23163

Requesting Agency: ITD

Project Year: 2028

Total Previous Expenditures: \$0

Total Programmed Cost: \$875

Total Cost (Prev. + Prog.): \$875

Project Description : Sealcoat State Highway 55 from the junction with US Highway 95 in the City of Marsing to Hoskins Road in Canyon County. The treatment will improve ride quality and extend the pavement lifespan. (59% Canyon County and 41% Owyhee County)



Funding Source		Program						Local Match 7.34%	
State	State Hwy - Pavement Preservation								
Cost Year*	Preliminary Engineering	Preliminary Engineering Consulting	Right-of-Way	Utilities	Construction Engineering	Construction	Total	Federal Share	Local Share
2024	27	0	0	0	0	0	27	25	2
2028	0	0	0	0	27	821	848	786	62
Fund Totals:	\$27	\$0	\$0	\$0	\$27	\$821	\$875	\$811	\$64

SH-55, SH-44 (State Street) to Payette River Bridge, Rehabilitation

Regionally Significant:

COMPASS PM:

Federal PM:

Key # : 20506

Maintenance

Requesting Agency: ITD

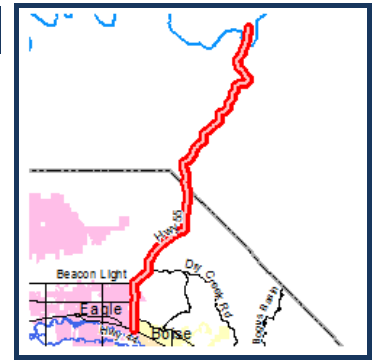
Project Year: 2023

Total Previous Expenditures: \$200

Total Programmed Cost: \$11,744

Total Cost (Prev. + Prog.): \$11,944

Project Description : Rehabilitate approximately 18 miles of pavement on State Highway 55 from State Highway 44 (State Street) to the Payette River Bridge in Ada and Boise Counties. (45% Ada County and 55% Boise County)



Funding Source		Program						Local Match 7.34%	
NHPP		State Hwy - Restoration							
Cost Year*	Preliminary Engineering	Preliminary Engineering Consulting	Right-of-Way	Utilities	Construction Engineering	Construction	Total	Federal Share	Local Share
2023	0	0	0	0	920	10,824	11,744	10,882	862
Fund Totals:	\$0	\$0	\$0	\$0	\$920	\$10,824	\$11,744	\$10,882	\$862

SH-69, Pavement Preservation, Kuna to Meridian

Regionally Significant:

COMPASS PM:

Federal PM:

Key # : 22699

Maintenance

Requesting Agency: ITD

Project Year: 2027

Total Previous Expenditures: \$0

Total Programmed Cost: \$2,591

Total Cost (Prev. + Prog.): \$2,591

Project Description : Sealcoat the pavement surface on State Highway 69 (Meridian Road), from Orchard Avenue in the City of Kuna to Interstate 84 in the City of Meridian, to improve ride quality and extend the pavement lifespan.



Funding Source		Program						Local Match 7.34%	
STBG-State		State Hwy - Pavement Preservation							
Cost Year*	Preliminary Engineering	Preliminary Engineering Consulting	Right-of-Way	Utilities	Construction Engineering	Construction	Total	Federal Share	Local Share
2022	90	0	0	0	0	0	90	83	7
2027	0	0	0	0	183	2,318	2,501	2,317	184
Fund Totals:	\$90	\$0	\$0	\$0	\$183	\$2,318	\$2,591	\$2,401	\$190

SR2S, VRT, Ada County – FY2023

Regionally Significant:

COMPASS PM:

Federal PM:

Key #: 20493

Support

Requesting Agency: Valley Regional Transit

Project Year: 2023

Total Previous Expenditures: \$0

Total Programmed Cost: \$171

Total Cost (Prev. + Prog.): \$171

Project Description : Support up to three full-time staff for Safe Routes to School (SR2S) coordination serving schools in Ada County, with a focus on Boise and West Ada School Districts for service year FY2023.



Funding Source		TAP-TMA		Program				Local Hwy - Transportation Alternatives		Local Match 7.34%	
Cost Year*	Preliminary Engineering	Preliminary Engineering Consulting	Right-of-Way	Utilities	Construction Engineering	Construction	Total	Federal Share	Local Share		
2023	0	0	0	0	0	171	171	158	13		
Fund Totals:	\$0	\$0	\$0	\$0	\$0	\$171	\$171	\$158	\$13		

SR2S, VRT, Ada County – FY2024 and FY2025

Regionally Significant:

COMPASS PM:

Federal PM:

Key #: 21910

Support

Requesting Agency: Valley Regional Transit

Project Year: 2024-2025

Total Previous Expenditures: \$0

Total Programmed Cost: \$411

Total Cost (Prev. + Prog.): \$411

Project Description : Support up to three full-time and one part-time staff for Safe Routes to School (SR2S) coordination serving schools in Ada County, with a focus on the Boise and West Ada School Districts for service years FY2024 and FY2025.



Funding Source		TAP-TMA		Program				Local Hwy - Transportation Alternatives		Local Match 7.34%	
Cost Year*	Preliminary Engineering	Preliminary Engineering Consulting	Right-of-Way	Utilities	Construction Engineering	Construction	Total	Federal Share	Local Share		
2024	0	0	0	0	0	411	411	381	30		
Fund Totals:	\$0	\$0	\$0	\$0	\$0	\$411	\$411	\$381	\$30		

SR2S, VRT, Ada County – FY2026

Regionally Significant:

COMPASS PM:

Federal PM:

Key #: 22993

Support

Requesting Agency: Valley Regional Transit

Project Year: 2026

Total Previous Expenditures: \$0

Total Programmed Cost: \$218

Total Cost (Prev. + Prog.): \$218

Project Description : Support up to three full-time and one part-time staff for Safe Routes to School (SR2S) coordination serving schools in Ada County, with a focus on the Boise and West Ada School Districts for service year FY2026.



Funding Source		TAP-TMA		Program		Local Hwy - Transportation Alternatives		Local Match 7.34%	
Cost Year*	Preliminary Engineering	Preliminary Engineering Consulting	Right-of-Way	Utilities	Construction Engineering	Construction	Total	Federal Share	Local Share
2026	0	0	0	0	0	218	218	202	16
Fund Totals:	\$0	\$0	\$0	\$0	\$0	\$218	\$218	\$202	\$16

SR2S, VRT, Ada County – FY2027

Regionally Significant:

COMPASS PM:

Federal PM:

Key #: ORN23306

Support

Requesting Agency: Valley Regional Transit

Project Year: 2027

Total Previous Expenditures: \$0

Total Programmed Cost: \$281

Total Cost (Prev. + Prog.): \$281

Project Description : Support up to three full-time and one part-time staff for Safe Routes to School (SR2S) coordination serving schools in Ada County, with a focus on the Boise and West Ada School Districts for service year FY2027.



Funding Source		TAP-TMA		Program		Local Hwy - Transportation Alternatives		Local Match 7.34%	
Cost Year*	Preliminary Engineering	Preliminary Engineering Consulting	Right-of-Way	Utilities	Construction Engineering	Construction	Total	Federal Share	Local Share
2027	0	0	0	0	0	73	73	68	5
Fund Totals:	\$0	\$0	\$0	\$0	\$0	\$73	\$73	\$68	\$5

Funding Source		STBG-TMA		Program		Local Hwy - Transportation Management Area		Local Match 7.34%	
Cost Year*	Preliminary Engineering	Preliminary Engineering Consulting	Right-of-Way	Utilities	Construction Engineering	Construction	Total	Federal Share	Local Share
2027	0	0	0	0	0	208	208	193	15
Fund Totals:	\$0	\$0	\$0	\$0	\$0	\$208	\$208	\$193	\$15

SR2S, VRT, Canyon County – FY2022

Regionally Significant:

COMPASS PM:

Federal PM:

Key #: 22922

Support

Requesting Agency: Valley Regional Transit

Project Year: 2022

Total Previous Expenditures: \$0

Total Programmed Cost: \$65

Total Cost (Prev. + Prog.): \$65

Project Description : Provides for Safe Routes to School program personnel, education materials, encouragement incentives, special events, and indirect costs in Canyon County.



Funding Source		Program						Local Match 7.34%		
Cost Year*	TAP-State	Preliminary Engineering	Preliminary Engineering Consulting	Right-of-Way	Utilities	Construction Engineering	Construction	Total	Federal Share	Local Share
2022		0	0	0	0	0	65	65	60	5
Fund Totals:		\$0	\$0	\$0	\$0	\$0	\$65	\$65	\$60	\$5

SR2S, VRT, Canyon County – FY2023

Regionally Significant:

COMPASS PM:

Federal PM:

Key #: 22924

Support

Requesting Agency: Valley Regional Transit

Project Year: 2023

Total Previous Expenditures: \$0

Total Programmed Cost: \$65

Total Cost (Prev. + Prog.): \$65

Project Description : Provides for Safe Routes to School program personnel, education materials, encouragement incentives, special events, and direct costs in Canyon County.



Funding Source		Program						Local Match 7.34%		
Cost Year*	TAP-State	Preliminary Engineering	Preliminary Engineering Consulting	Right-of-Way	Utilities	Construction Engineering	Construction	Total	Federal Share	Local Share
2023		0	0	0	0	0	65	65	60	5
Fund Totals:		\$0	\$0	\$0	\$0	\$0	\$65	\$65	\$60	\$5

Study, Big Data Purchase, COMPASS

Regionally Significant:

COMPASS PM:

Federal PM:

Key #: 22394

Support

Requesting Agency: COMPASS

Project Year: 2025

Total Previous Expenditures: \$0

Total Programmed Cost: \$150

Total Cost (Prev. + Prog.): \$150

Project Description : Purchase data from vendor(s) to supplement the COMPASS Household Travel Survey data (2021) and census data. The data will be used to update the "external" trip (trip to/from the surrounding counties) rates and characteristics in the regional travel demand model; analyze non-motorized travel; and allow for review of trips, travel time, time of day, and mode to and from sub-areas (smaller than cities) in the region to help refine specific parameters in the regional model.



Funding Source		STBG-TMA		Program			Local Hwy - Transportation Management Area		Local Match 7.34%	
Cost Year*	Preliminary Engineering	Preliminary Engineering Consulting	Right-of-Way	Utilities	Construction Engineering	Construction	Total	Federal Share	Local Share	
2025	0	150	0	0	0	0	150	139	11	
Fund Totals:	\$0	\$150	\$0	\$0	\$0	\$0	\$150	\$139	\$11	

Study, Chinden Drainage and Design Plan, Garden City

Regionally Significant:

COMPASS PM:

Federal PM:

Key #: NEW5

Requesting Agency: City of Garden City

Project Year: PD

Total Previous Expenditures: \$0

Total Programmed Cost: \$200

Total Cost (Prev. + Prog.): \$200

Project Description : Develop a draining plan, cross sections, project list, and public involvement for the US 20/26 (Chinden Boulevard) Redevelopment Plan from Branstetter Street to Fairview Avenue in the City of Garden City.



Funding Source		STBG-TMA		Program			Local Hwy - Transportation Management Area		Local Match 7.34%	
Cost Year*	Preliminary Engineering	Preliminary Engineering Consulting	Right-of-Way	Utilities	Construction Engineering	Construction	Total	Federal Share	Local Share	
PD	0	200	0	0	0	0	200	185	15	
Fund Totals:	\$0	\$200	\$0	\$0	\$0	\$0	\$200	\$185	\$15	

*PD = Preliminary Development (projects with development activity but no programmed year of construction)

Study, Coordinate Local Waterway-Pathway Plans, COMPASS

Regionally Significant:

COMPASS PM:

Federal PM:

Key #: NEW6

Requesting Agency: COMPASS

Project Year: PD

Total Previous Expenditures: \$0

Total Programmed Cost: \$120

Total Cost (Prev. + Prog.): \$120

Project Description : Collaborate with local agencies in Ada and Canyon Counties to coordinate the waterway-pathway plans they have developed/are developing. Scope includes an analysis of potential connections to other pathways, implementation strategies, cost estimates, and funding options.



Funding Source		STBG-TMA		Program				Local Hwy - Transportation Management Area		Local Match 7.34%	
Cost Year*	Preliminary Engineering	Preliminary Engineering Consulting	Right-of-Way	Utilities	Construction Engineering	Construction	Total	Federal Share	Local Share		
PD	0	120	0	0	0	0	120	111	9		
Fund Totals:	\$0	\$120	\$0	\$0	\$0	\$0	\$120	\$111	\$9		

Study, Fiscal Impact Analysis, COMPASS

Regionally Significant:

COMPASS PM:

Federal PM:

Key #: 22395

Support

Requesting Agency: COMPASS

Project Year: 2025

Total Previous Expenditures: \$0

Total Programmed Cost: \$60

Total Cost (Prev. + Prog.): \$60

Project Description : To better implement the goals of Communities in Motion, this project will provide information on the fiscal impact of various growth patterns. Work will develop a fiscal impact analysis calculator, analyze the public costs and revenues of various land use patterns, build an economic model that can be used in the COMPASS development checklist for highlighting the costs of development, and conduct outreach and training for local decision-makers so that fiscal analysis can be used in local land use decision-making.



Funding Source		STBG-TMA		Program				Local Hwy - Transportation Management Area		Local Match 7.34%	
Cost Year*	Preliminary Engineering	Preliminary Engineering Consulting	Right-of-Way	Utilities	Construction Engineering	Construction	Total	Federal Share	Local Share		
2025	0	60	0	0	0	0	60	56	4		
Fund Totals:	\$0	\$60	\$0	\$0	\$0	\$0	\$60	\$56	\$4		

Ten Mile Road, Victory Road to Overland Road, Meridian

Regionally Significant:

Key #: RC0299

Requesting Agency: ACHD

Project Year: 2022-2023

Total Previous Expenditures: \$43

Total Programmed Cost: \$2,984

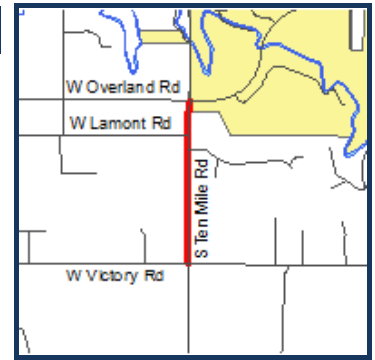
Total Cost (Prev. + Prog.): \$3,027

Project Description : Widen Ten Mile Road, from Victory Road to Overland Road in the City of Meridian, to five lanes with curb, gutter, sidewalk, and level three bicycle facility.

COMPASS PM:

Congestion Reduction/System Reliability
 Transportation Safety
 Community Infrastructure
 Housing

Federal PM:



Funding Source Local (Regionally Significant) Program Hwy - Local Partnerships								Local Match 100.00%	
Cost Year*	Preliminary Engineering	Preliminary Engineering Consulting	Right-of-Way	Utilities	Construction Engineering	Construction	Total	Federal Share	Local Share
2022	0	0	0	4	0	2,830	2,834	0	2,834
2023	0	0	0	0	0	150	150	0	150
Fund Totals:	\$0	\$0	\$0	\$4	\$0	\$2,980	\$2,984	\$0	\$2,984

Transit - Acquisition of Service, Boise Area, VRT

Regionally Significant:

Key #: 19691

Requesting Agency: Valley Regional Transit

Project Year: 2022-2026

Total Previous Expenditures: \$0

Total Programmed Cost: \$2,015

Total Cost (Prev. + Prog.): \$2,015

Project Description : Provide transportation services through local human service organizations who work with the elderly and persons with disabilities in the Boise Urbanized Area. See Valley Regional Transit's Program of Projects for more details.

COMPASS PM:

Congestion Reduction/System Reliability

Federal PM:



Funding Source FTA 5310 LU Program Transit Capital							Local Match 20.00%		
Cost Year*	Preliminary Engineering	Preliminary Engineering Consulting	Right-of-Way	Utilities	Construction Engineering	Construction	Total	Federal Share	Local Share
2022	0	0	0	0	0	403	403	322	81
2023	0	0	0	0	0	403	403	322	81
2024	0	0	0	0	0	403	403	322	81
2025	0	0	0	0	0	403	403	322	81
2026	0	0	0	0	0	403	403	322	81
Fund Totals:	\$0	\$0	\$0	\$0	\$0	\$2,015	\$2,015	\$1,612	\$403

*PD = Preliminary Development (projects with development activity but no programmed year of construction)

Transit - Acquisition of Service, Canyon County, VRT

Regionally Significant:

COMPASS PM:

Federal PM:

Key # : 19464c

Congestion Reduction/System Reliability

Requesting Agency: Valley Regional Transit

Project Year: 2021-2022

Total Previous Expenditures: \$63

Total Programmed Cost: \$63

Total Cost (Prev. + Prog.): \$126

Project Description : Provide transportation services through Valley Regional Transit in rural and urban areas of Ada and Canyon Counties, for services in FY2021 and FY2022. Additional details about this program are included in ITD's programming documents.



Funding Source		FTA 5310 R		Program			Transit Capital		Local Match 20.00%	
Cost Year*	Preliminary Engineering	Preliminary Engineering Consulting	Right-of-Way	Utilities	Construction Engineering	Construction	Total	Federal Share	Local Share	
2022	0	0	0	0	0	63	63	50	13	
Fund Totals:	\$0	\$0	\$0	\$0	\$0	\$63	\$63	\$50	\$13	

Transit - Acquisition of Service, Nampa Area, VRT

Regionally Significant:

COMPASS PM:

Federal PM:

Key # : 19464a

Congestion Reduction/System Reliability

Requesting Agency: Valley Regional Transit

Project Year: 2022-2026

Total Previous Expenditures: \$0

Total Programmed Cost: \$1,680

Total Cost (Prev. + Prog.): \$1,680

Project Description : Provide transportation services through local human service organizations who work with the elderly and persons with disabilities in the Nampa Urbanized Area. Additional details about this program are included in ITD's programming documents.



Funding Source		FTA 5310 SU		Program			Transit Capital		Local Match 20.00%	
Cost Year*	Preliminary Engineering	Preliminary Engineering Consulting	Right-of-Way	Utilities	Construction Engineering	Construction	Total	Federal Share	Local Share	
2022	0	0	0	0	0	336	336	269	67	
2023	0	0	0	0	0	336	336	269	67	
2024	0	0	0	0	0	336	336	269	67	
2025	0	0	0	0	0	336	336	269	67	
2026	0	0	0	0	0	336	336	269	67	
Fund Totals:	\$0	\$0	\$0	\$0	\$0	\$1,680	\$1,680	\$1,344	\$336	

*PD = Preliminary Development (projects with development activity but no programmed year of construction)

Transit - Fixed Line Service, Rural Areas, TVT

Regionally Significant:

COMPASS PM:

Federal PM:

Key #: 19983

Congestion Reduction/System Reliability

Requesting Agency: Treasure Valley Transit

Maintenance

Project Year: 2021-2022

Transportation Infrastructure

Total Previous Expenditures: \$800

Total Programmed Cost: \$800

Total Cost (Prev. + Prog.): \$1,600

Project Description : Fixed line service in rural areas of southwest Idaho, including Ada and Canyon Counties for all groups, including but not limited to, older adults, persons with disabilities, youth, low income, non-drivers, minority groups, veterans, and refugee populations. The project includes required demand response service, as well as administration, operations, preventive maintenance, and capital purchases. Various aspects of the project have different local match rates. The match rate shown is an average of the rates combined. Additional details about this program are included in ITD's programming documents.



Funding Source		FTA 5311						Program		Transit Operations		Local Match 28.75%	
Cost Year*	Preliminary Engineering	Preliminary Engineering Consulting	Right-of-Way	Utilities	Construction Engineering	Construction	Total	Federal Share	Local Share				
2022	0	0	0	0	0	800	800	570	230				
Fund Totals:	\$0	\$0	\$0	\$0	\$0	\$800	\$800	\$570	\$230				

Transit - Nampa Facility Renovations, TVT

Regionally Significant:

COMPASS PM:

Federal PM:

Key #: NEW8

Requesting Agency: Treasure Valley Transit

Project Year: 2022

Total Previous Expenditures: \$0

Total Programmed Cost: \$56

Total Cost (Prev. + Prog.): \$56

Project Description : Provides critical maintenance and increase the useful life and state of good repair of the property for the Treasure Valley Transit Nampa Administrative Offices and bus storage located in the City of Nampa. These improvements are the painting of the exterior and interior of the building; the removal of carpet and installation of new commercial carpet, including furniture removal; purchase of furniture for seven office stations, lobby area, and driver lounge; storage of boxes, file cabinets, and miscellaneous furniture during the restoration; and return of furniture to the offices.



Funding Source		FTA 5311						Program		Transit Capital		Local Match 20.00%	
Cost Year*	Preliminary Engineering	Preliminary Engineering Consulting	Right-of-Way	Utilities	Construction Engineering	Construction	Total	Federal Share	Local Share				
2022	0	0	0	0	0	56	56	45	11				
Fund Totals:	\$0	\$0	\$0	\$0	\$0	\$56	\$56	\$45	\$11				

Transit - Nampa Property Acquisition, TVT

Regionally Significant:

COMPASS PM:

Federal PM:

Key # : 20136c

Requesting Agency: Treasure Valley Transit

Project Year: 2022

Total Previous Expenditures: \$0

Total Programmed Cost: \$1,940

Total Cost (Prev. + Prog.): \$1,940

Project Description : Property acquisition of a new facility for Treasure Valley Transit.



Funding Source		Program						Local Match 20.00%	
Cost Year*	Preliminary Engineering	Preliminary Engineering Consulting	Right-of-Way	Utilities	Construction Engineering	Construction	Total	Federal Share	Local Share
2022	0	0	0	0	0	1,940	1,940	1,552	388
Fund Totals:	\$0	\$0	\$0	\$0	\$0	\$1,940	\$1,940	\$1,552	\$388

Transit - Operations - Fixed Route and Mobility Management, Nampa Area, VRT

Regionally Significant:

COMPASS PM:

Federal PM:

Key # : 18786

Congestion Reduction/System Reliability

Requesting Agency: Valley Regional Transit

Project Year: 2022-2026

Total Previous Expenditures: \$0

Total Programmed Cost: \$9,174

Total Cost (Prev. + Prog.): \$9,174

Project Description : Provide for fixed route and mobility management operations and services in the Nampa Urbanized Area. See Valley Regional Transit's Program of Projects for more details.



Funding Source		Program						Local Match 50.00%	
Cost Year*	Preliminary Engineering	Preliminary Engineering Consulting	Right-of-Way	Utilities	Construction Engineering	Construction	Total	Federal Share	Local Share
2022	0	0	0	0	0	1,762	1,762	881	881
2023	0	0	0	0	0	1,796	1,796	898	898
2024	0	0	0	0	0	1,834	1,834	917	917
2025	0	0	0	0	0	1,872	1,872	936	936
2026	0	0	0	0	0	1,910	1,910	955	955
Fund Totals:	\$0	\$0	\$0	\$0	\$0	\$9,174	\$9,174	\$4,587	\$4,587

*PD = Preliminary Development (projects with development activity but no programmed year of construction)

Transit - Operations - Mobility Management, Boise Area, VRT

Regionally Significant:

COMPASS PM:

Federal PM:

Key # : 19041

Congestion Reduction/System Reliability

Requesting Agency: Valley Regional Transit

Project Year: 2022-2026

Total Previous Expenditures: \$0

Total Programmed Cost: \$3,570

Total Cost (Prev. + Prog.): \$3,570

Project Description : Provide operations for mobility management programs in the Boise Urbanized Area. See Valley Regional Transit's Program of Projects for more details.



Funding Source		FTA 5307 LU		Program				Transit Operations		Local Match 50.00%	
Cost Year*	Preliminary Engineering	Preliminary Engineering Consulting	Right-of-Way	Utilities	Construction Engineering	Construction	Total	Federal Share	Local Share		
2022	0	0	0	0	0	714	714	357	357		
2023	0	0	0	0	0	714	714	357	357		
2024	0	0	0	0	0	714	714	357	357		
2025	0	0	0	0	0	714	714	357	357		
2026	0	0	0	0	0	714	714	357	357		
Fund Totals:	\$0	\$0	\$0	\$0	\$0	\$3,570	\$3,570	\$1,785	\$1,785		

Transit - Preventive Maintenance and Demand Response, Nampa Area, VRT

Regionally Significant:

COMPASS PM:

Federal PM:

Key # : 18914

Maintenance

Congestion Reduction/System Reliability

Requesting Agency: Valley Regional Transit

Project Year: 2022-2026

Total Previous Expenditures: \$0

Total Programmed Cost: \$2,898

Total Cost (Prev. + Prog.): \$2,898

Project Description : Provide preventive maintenance and complementary paratransit to sustain vehicle and facility safety and security in the Nampa Urbanized Area. See Valley Regional Transit's Program of Projects for more details.



Funding Source		FTA 5307 SU		Program				Transit Capital		Local Match 20.00%	
Cost Year*	Preliminary Engineering	Preliminary Engineering Consulting	Right-of-Way	Utilities	Construction Engineering	Construction	Total	Federal Share	Local Share		
2022	0	0	0	0	0	551	551	441	110		
2023	0	0	0	0	0	565	565	452	113		
2024	0	0	0	0	0	579	579	463	116		
2025	0	0	0	0	0	594	594	475	119		
2026	0	0	0	0	0	609	609	487	122		
Fund Totals:	\$0	\$0	\$0	\$0	\$0	\$2,898	\$2,898	\$2,318	\$580		

*PD = Preliminary Development (projects with development activity but no programmed year of construction)

Transit - Preventive Maintenance and Paratransit, Boise Area, VRT

Regionally Significant:

COMPASS PM:

Federal PM:

Key # : 19137

Maintenance

Congestion Reduction/System Reliability

Requesting Agency: Valley Regional Transit

Project Year: 2022-2026

Total Previous Expenditures: \$0

Total Programmed Cost: \$18,409

Total Cost (Prev. + Prog.): \$18,409

Project Description : Provide preventive maintenance and complementary paratransit operation services to sustain vehicle and facility safety and security in the Boise Urbanized Area. See Valley Regional Transit's Program of Projects for more details.



Funding Source		FTA 5307 LU		Program			Transit Capital		Local Match 20.00%	
Cost Year*	Preliminary Engineering	Preliminary Engineering Consulting	Right-of-Way	Utilities	Construction Engineering	Construction	Total	Federal Share	Local Share	
2022	0	0	0	0	0	3,558	3,558	2,846	712	
2023	0	0	0	0	0	3,618	3,618	2,894	724	
2024	0	0	0	0	0	3,680	3,680	2,944	736	
2025	0	0	0	0	0	3,744	3,744	2,995	749	
2026	0	0	0	0	0	3,809	3,809	3,047	762	
Fund Totals:	\$0	\$0	\$0	\$0	\$0	\$18,409	\$18,409	\$14,727	\$3,682	

Transit - Purchase of Service, Rural Areas, TVT

Regionally Significant:

COMPASS PM:

Federal PM:

Key # : 19464b

Congestion Reduction/System Reliability

Requesting Agency: Treasure Valley Transit

Project Year: 2021-2022

Total Previous Expenditures: \$176

Total Programmed Cost: \$177

Total Cost (Prev. + Prog.): \$353

Project Description : Provide transportation services through Treasure Valley Transit in rural areas of Southwest Idaho, including Canyon County, for services in FY2021 and FY2022. Additional details about this program are included in ITD's programming documents.



Funding Source		FTA 5310 R		Program			Transit Capital		Local Match 20.00%	
Cost Year*	Preliminary Engineering	Preliminary Engineering Consulting	Right-of-Way	Utilities	Construction Engineering	Construction	Total	Federal Share	Local Share	
2022	0	0	0	0	0	177	177	142	35	
Fund Totals:	\$0	\$0	\$0	\$0	\$0	\$177	\$177	\$142	\$35	

Transit - Rolling Stock, Infrastructure, and Technology, Boise Area, VRT

Regionally Significant:

COMPASS PM:

Federal PM:

Key #: 18788

Transportation Infrastructure

Requesting Agency: Valley Regional Transit

Project Year: 2022-2026

Total Previous Expenditures: \$0

Total Programmed Cost: \$1,591

Total Cost (Prev. + Prog.): \$1,591

Project Description : Fund capital replacement (identified in the Transit Asset Management Plan) or expansion projects, such as rolling stock, infrastructure, and technology, in the Boise Urbanized Area.



Funding Source		FTA 5307 LU		Program			Transit Capital		Local Match 20.00%	
Cost Year*	Preliminary Engineering	Preliminary Engineering Consulting	Right-of-Way	Utilities	Construction Engineering	Construction	Total	Federal Share	Local Share	
2022	0	0	0	0	0	503	503	402	101	
2023	0	0	0	0	0	413	413	330	83	
2024	0	0	0	0	0	320	320	256	64	
2025	0	0	0	0	0	226	226	181	45	
2026	0	0	0	0	0	129	129	103	26	
Fund Totals:	\$0	\$0	\$0	\$0	\$0	\$1,591	\$1,591	\$1,273	\$318	

Transit - Rolling Stock, Infrastructure, and Technology, Boise Area, VRT

Regionally Significant:

COMPASS PM:

Federal PM:

Key #: 19122

Transportation Infrastructure

Requesting Agency: Valley Regional Transit

Project Year: 2022-2026

Total Previous Expenditures: \$0

Total Programmed Cost: \$3,320

Total Cost (Prev. + Prog.): \$3,320

Project Description : Fund capital replacement (identified in the Transit Asset Management Plan) or expansion projects, such as rolling stock, infrastructure, and technology, in the Boise Urbanized Area.



Funding Source		FTA 5339 LU		Program			Transit Capital		Local Match 20.00%	
Cost Year*	Preliminary Engineering	Preliminary Engineering Consulting	Right-of-Way	Utilities	Construction Engineering	Construction	Total	Federal Share	Local Share	
2022	0	0	0	0	0	664	664	531	133	
2023	0	0	0	0	0	664	664	531	133	
2024	0	0	0	0	0	664	664	531	133	
2025	0	0	0	0	0	664	664	531	133	
2026	0	0	0	0	0	664	664	531	133	
Fund Totals:	\$0	\$0	\$0	\$0	\$0	\$3,320	\$3,320	\$2,656	\$664	

*PD = Preliminary Development (projects with development activity but no programmed year of construction)

Transit - Rolling Stock, Infrastructure, and Technology, Boise Area, VRT – FY2022

Regionally Significant:

COMPASS PM:

Federal PM:

Key # : 19763

Transportation Infrastructure

Requesting Agency: Valley Regional Transit

Project Year: 2022

Total Previous Expenditures: \$0

Total Programmed Cost: \$3,077

Total Cost (Prev. + Prog.): \$3,077

Project Description : Fund capital replacement projects, such as rolling stock, infrastructure, and technology, identified in the Transit Asset Management Plan in FY2022 in the Boise Urbanized Area.



Funding Source		STBG-TMA		Program				Local Hwy - Transportation Management Area		Local Match 7.34%	
Cost Year*	Preliminary Engineering	Preliminary Engineering Consulting	Right-of-Way	Utilities	Construction Engineering	Construction	Total	Federal Share	Local Share		
2022	0	0	0	0	0	529	529	490	39		
Fund Totals:	\$0	\$0	\$0	\$0	\$0	\$529	\$529	\$490	\$39		

Funding Source		STBG-TMA		Program				Local Hwy – CRRSAA 2021		Local Match 7.34%	
Cost Year*	Preliminary Engineering	Preliminary Engineering Consulting	Right-of-Way	Utilities	Construction Engineering	Construction	Total	Federal Share	Local Share		
2022	0	0	0	0	0	2,548	2,548	2,361	187		
Fund Totals:	\$0	\$0	\$0	\$0	\$0	\$2,548	\$2,548	\$2,361	\$187		

Transit - Rolling Stock, Infrastructure, and Technology, Boise Area, VRT – FY2024

Regionally Significant:

COMPASS PM:

Federal PM:

Key # : 20659

Transportation Infrastructure

Requesting Agency: Valley Regional Transit

Project Year: 2024

Total Previous Expenditures: \$0

Total Programmed Cost: \$1,491

Total Cost (Prev. + Prog.): \$1,491

Project Description : Fund capital replacement projects, such as rolling stock, infrastructure, and technology, identified in the Transit Asset Management Plan in FY2024 in the Boise Urbanized Area.



Funding Source		STBG-TMA		Program				Local Hwy - Transportation Management Area		Local Match 7.34%	
Cost Year*	Preliminary Engineering	Preliminary Engineering Consulting	Right-of-Way	Utilities	Construction Engineering	Construction	Total	Federal Share	Local Share		
2024	0	0	0	0	0	1,491	1,491	1,382	109		
Fund Totals:	\$0	\$0	\$0	\$0	\$0	\$1,491	\$1,491	\$1,382	\$109		

*PD = Preliminary Development (projects with development activity but no programmed year of construction)

Transit - Rolling Stock, Infrastructure, and Technology, Boise Area, VRT – FY2025

Regionally Significant:

COMPASS PM:

Federal PM:

Key # : 21903

Transportation Infrastructure

Requesting Agency: Valley Regional Transit

Project Year: 2025

Total Previous Expenditures: \$0

Total Programmed Cost: \$1,461

Total Cost (Prev. + Prog.): \$1,461

Project Description : Fund capital replacement projects, such as rolling stock, infrastructure, and technology, identified in the Transit Asset Management Plan in FY2025 in the Boise Urbanized Area.



Funding Source		STBG-TMA		Program				Local Hwy - Transportation Management Area		Local Match 7.34%	
Cost Year*	Preliminary Engineering	Preliminary Engineering Consulting	Right-of-Way	Utilities	Construction Engineering	Construction	Total	Federal Share	Local Share		
2025	0	0	0	0	0	1,461	1,461	1,354	107		
Fund Totals:	\$0	\$0	\$0	\$0	\$0	\$1,461	\$1,461	\$1,354	\$107		

Transit - Rolling Stock, Infrastructure, and Technology, Boise Area, VRT – FY2026

Regionally Significant:

COMPASS PM:

Federal PM:

Key # : 22393

Transportation Infrastructure

Requesting Agency: Valley Regional Transit

Project Year: 2026

Total Previous Expenditures: \$0

Total Programmed Cost: \$1,431

Total Cost (Prev. + Prog.): \$1,431

Project Description : Fund capital replacement projects, such as rolling stock, infrastructure, and technology, identified in the Transit Asset Management Plan in FY2026 in the Boise Urbanized Area.



Funding Source		STBG-TMA		Program				Local Hwy - Transportation Management Area		Local Match 7.34%	
Cost Year*	Preliminary Engineering	Preliminary Engineering Consulting	Right-of-Way	Utilities	Construction Engineering	Construction	Total	Federal Share	Local Share		
2026	0	0	0	0	0	1,431	1,431	1,326	105		
Fund Totals:	\$0	\$0	\$0	\$0	\$0	\$1,431	\$1,431	\$1,326	\$105		

*PD = Preliminary Development (projects with development activity but no programmed year of construction)

Transit - Rolling Stock, Infrastructure, and Technology, Boise Area, VRT – FY2027

Regionally Significant:

COMPASS PM:

Federal PM:

Key # : 22815

Transportation Infrastructure

Requesting Agency: Valley Regional Transit

Project Year: 2027

Total Previous Expenditures: \$0

Total Programmed Cost: \$1,431

Total Cost (Prev. + Prog.): \$1,431

Project Description : Fund capital replacement projects, such as rolling stock, infrastructure, and technology, identified in the Transit Asset Management Plan in 2027 in the Boise Urbanized Area.



Funding Source		STBG-TMA						Program		Local Hwy - Transportation Management Area		Local Match 7.34%	
Cost Year*	Preliminary Engineering	Preliminary Engineering Consulting	Right-of-Way	Utilities	Construction Engineering	Construction	Total	Federal Share	Local Share				
2027	0	0	0	0	0	1,431	1,431	1,326	105				
Fund Totals:	\$0	\$0	\$0	\$0	\$0	\$1,431	\$1,431	\$1,326	\$105				

Transit - Rolling Stock, Infrastructure, and Technology, Nampa Area, VRT

Regionally Significant:

COMPASS PM:

Federal PM:

Key # : 18781

Support
Transportation Infrastructure

Requesting Agency: Valley Regional Transit

Project Year: 2022-2026

Total Previous Expenditures: \$0

Total Programmed Cost: \$2,094

Total Cost (Prev. + Prog.): \$2,094

Project Description : Fund capital replacement (identified in the Transit Asset Management Plan) or expansion projects, such as rolling stock, infrastructure, and technology, in the Nampa Urbanized Area.



Funding Source		FTA 5307 SU						Program		Transit Capital		Local Match 20.00%	
Cost Year*	Preliminary Engineering	Preliminary Engineering Consulting	Right-of-Way	Utilities	Construction Engineering	Construction	Total	Federal Share	Local Share				
2022	0	0	0	0	0	548	548	438	110				
2023	0	0	0	0	0	485	485	388	97				
2024	0	0	0	0	0	420	420	336	84				
2025	0	0	0	0	0	355	355	284	71				
2026	0	0	0	0	0	286	286	229	57				
Fund Totals:	\$0	\$0	\$0	\$0	\$0	\$2,094	\$2,094	\$1,675	\$419				

*PD = Preliminary Development (projects with development activity but no programmed year of construction)

Transit - Rolling Stock, Infrastructure, and Technology, Nampa Area, VRT

Regionally Significant:

COMPASS PM:

Federal PM:

Key #: 20136e

Transportation Infrastructure

Requesting Agency: Valley Regional Transit

Project Year: 2023-2026

Total Previous Expenditures: \$0

Total Programmed Cost: \$1,424

Total Cost (Prev. + Prog.): \$1,424

Project Description : Fund capital replacement (identified in the Transit Asset Management Plan) or expansion projects, such as rolling stock, infrastructure, and technology, in the Nampa Urbanized Area.



Funding Source		FTA 5339 SU		Program				Transit Capital		Local Match 20.00%	
Cost Year*	Preliminary Engineering	Preliminary Engineering Consulting	Right-of-Way	Utilities	Construction Engineering	Construction	Total	Federal Share	Local Share		
2023	0	0	0	0	0	356	356	285	71		
2024	0	0	0	0	0	356	356	285	71		
2025	0	0	0	0	0	356	356	285	71		
2026	0	0	0	0	0	356	356	285	71		
Fund Totals:	\$0	\$0	\$0	\$0	\$0	\$1,424	\$1,424	\$1,139	\$285		

Transit - Support Vehicle Replacement, TVT

Regionally Significant:

COMPASS PM:

Federal PM:

Key #: NEW9

Requesting Agency: Treasure Valley Transit

Project Year: 2022

Total Previous Expenditures: \$0

Total Programmed Cost: \$45

Total Cost (Prev. + Prog.): \$45

Project Description : Replace one non-revenue support vehicle for Treasure Valley Transit, headquartered in the City of Nampa. Funded through the State Vehicle Instement Program.



Funding Source		State		Program				Transit Capital		Local Match 20.00%	
Cost Year*	Preliminary Engineering	Preliminary Engineering Consulting	Right-of-Way	Utilities	Construction Engineering	Construction	Total	Federal Share	Local Share		
2022	0	0	0	0	0	45	45	36	9		
Fund Totals:	\$0	\$0	\$0	\$0	\$0	\$45	\$45	\$36	\$9		

*PD = Preliminary Development (projects with development activity but no programmed year of construction)

US 20/26 (Chinden), I-84 to Middleton Road, Canyon County

Regionally Significant:

Key #: 22165

Requesting Agency: ITD

Project Year: 2022

Total Previous Expenditures: \$12,425

Total Programmed Cost: \$37,399

Total Cost (Prev. + Prog.): \$49,824

Project Description : Widen US 20/26 (Chinden Boulevard) from Interstate 84 to Middleton Road to six lanes in the City of Caldwell. Work includes bicycle and pedestrian facilities.

COMPASS PM:

Congestion Reduction/System Reliability
 Transportation Safety
 Freight Movement and Economic Vitality
 Community Infrastructure

Federal PM:



Funding Source		TECM		Program					State Hwy - Safety & Capacity (Capacity)		Local Match 100.00%	
Cost Year*	Preliminary Engineering	Preliminary Engineering Consulting	Right-of-Way	Utilities	Construction Engineering	Construction	Total	Federal Share	Local Share			
2022	0	0	0	0	3,526	33,873	37,399	0	37,399			
Fund Totals:	\$0	\$0	\$0	\$0	\$3,526	\$33,873	\$37,399	\$0	\$37,399			

US 20/26 (Chinden), Phyllis Canal Bridge to SH-16, Ada County

Regionally Significant:

Key #: 20367

Requesting Agency: ITD

Project Year: 2023

Total Previous Expenditures: \$4,080

Total Programmed Cost: \$7,078

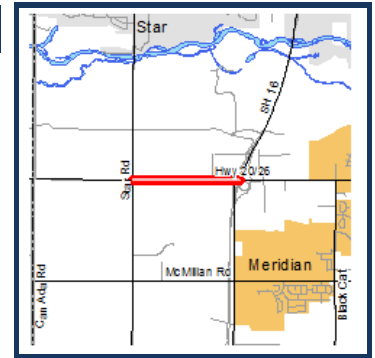
Total Cost (Prev. + Prog.): \$11,158

Project Description : Widen US 20/26 (Chinden Boulevard) from the Phyllis Canal Bridge (just west of Star Road) to State Highway 16 in Ada County. The project will add one additional lane in both directions and add bicycle and pedestrian facilities.

COMPASS PM:

Congestion Reduction/System Reliability
 Freight Movement and Economic Vitality
 Transportation Safety
 Community Infrastructure

Federal PM:



Funding Source		TECM		Program					State Hwy - Safety & Capacity (Capacity)		Local Match 100.00%	
Cost Year*	Preliminary Engineering	Preliminary Engineering Consulting	Right-of-Way	Utilities	Construction Engineering	Construction	Total	Federal Share	Local Share			
2023	0	0	0	0	778	6,300	7,078	0	7,078			
Fund Totals:	\$0	\$0	\$0	\$0	\$778	\$6,300	\$7,078	\$0	\$7,078			

*PD = Preliminary Development (projects with development activity but no programmed year of construction)

US 20/26 (Chinden), Phyllis Canal Bridge, Rehabilitation, near Meridian

Regionally Significant:

Key #: 20227

Requesting Agency: ITD

Project Year: 2023

Total Previous Expenditures: \$900

Total Programmed Cost: \$3,652

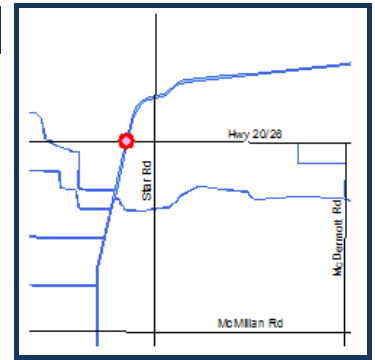
Total Cost (Prev. + Prog.): \$4,552

Project Description : Replace a culvert on US 20/26 (Chinden Boulevard) at the Phyllis Canal near the City of Meridian due to restrictions for freight.

COMPASS PM:

Transportation Safety
 Freight Movement and Economic Vitality
 Transportation Infrastructure
 Farmland
 Community Infrastructure

Federal PM:



Funding Source NHPP		Program State Hwy - Bridge Restoration						Local Match 7.34%	
Cost Year*	Preliminary Engineering	Preliminary Engineering Consulting	Right-of-Way	Utilities	Construction Engineering	Construction	Total	Federal Share	Local Share
2023	0	0	0	0	286	3,366	3,652	3,384	268
Fund Totals:	\$0	\$0	\$0	\$0	\$286	\$3,366	\$3,652	\$3,384	\$268

US-95, Parma North City Limit to I-84, Canyon and Payette

Regionally Significant:

Key #: ORN23167

Requesting Agency: ITD

Project Year: 2028

Total Previous Expenditures: \$0

Total Programmed Cost: \$7,145

Total Cost (Prev. + Prog.): \$7,145

Project Description : Resurface the pavement on US Highway 95 from just south of the junction with US Highway 20 near the City of Parma to just south of the junction with I-84 in Payette County. (47% Canyon County and 53% Payette County)

COMPASS PM:

Federal PM:



Funding Source NHPP		Program State Hwy - Restoration						Local Match 7.34%	
Cost Year*	Preliminary Engineering	Preliminary Engineering Consulting	Right-of-Way	Utilities	Construction Engineering	Construction	Total	Federal Share	Local Share
2024	508	0	0	0	0	0	508	471	37
2028	0	0	0	0	508	6,129	6,637	6,150	487
Fund Totals:	\$508	\$0	\$0	\$0	\$508	\$6,129	\$7,145	\$6,621	\$524

*PD = Preliminary Development (projects with development activity but no programmed year of construction)

US-95, Pavement Preservation, Canyon County

Regionally Significant:

COMPASS PM:

Federal PM:

Key #: ORN23162

Requesting Agency: ITD

Project Year: 2028

Total Previous Expenditures: \$0

Total Programmed Cost: \$1,104

Total Cost (Prev. + Prog.): \$1,104

Project Description : Sealcoat the pavement surface on US Highway 95 from Lower Pleasant Ridge Road south of the City of Wilder to just north of the cemetery in the City of Parma. The treatment will improve ride quality and extend the pavement lifespan.



Funding Source		NHPP		Program			State Hwy - Pavement Preservation		Local Match 7.34%	
Cost Year*	Preliminary Engineering	Preliminary Engineering Consulting	Right-of-Way	Utilities	Construction Engineering	Construction	Total	Federal Share	Local Share	
2024	33	0	0	0	0	0	33	31	2	
2028	0	0	0	0	33	1,038	1,071	992	79	
Fund Totals:	\$33	\$0	\$0	\$0	\$33	\$1,038	\$1,104	\$1,023	\$81	

Ustick Road, Ten Mile Road to Linder Road, Meridian

Regionally Significant:

COMPASS PM:

Federal PM:

Key #: RD207-24

Congestion Reduction/System Reliability

Requesting Agency: ACHD

Community Infrastructure

Project Year: 2025

Transportation Safety

Total Previous Expenditures: \$0

Health

Total Programmed Cost: \$3,617

Total Cost (Prev. + Prog.): \$3,617

Project Description : Widen Ustick Road from Ten Mile Road to Linder Road in the City of Meridian to five lanes. The projects includes curb, gutter, sidewalk, and a level three bicycle facility. The concept-level design will further clarify the scope of the project.



Funding Source		Local (Regionally Significant)		Program			Hwy - Local Partnerships		Local Match 100.00%	
Cost Year*	Preliminary Engineering	Preliminary Engineering Consulting	Right-of-Way	Utilities	Construction Engineering	Construction	Total	Federal Share	Local Share	
2022	0	292	0	0	0	0	292	0	292	
2023	0	0	140	0	0	0	140	0	140	
2025	0	0	0	0	0	3,185	3,185	0	3,185	
Fund Totals:	\$0	\$292	\$140	\$0	\$0	\$3,185	\$3,617	\$0	\$3,617	

Western Heritage Byway, Swan Falls Road, ACHD

Regionally Significant:

Key #: 22600

Requesting Agency: ACHD

Project Year: 2024-2025

Total Previous Expenditures: \$426

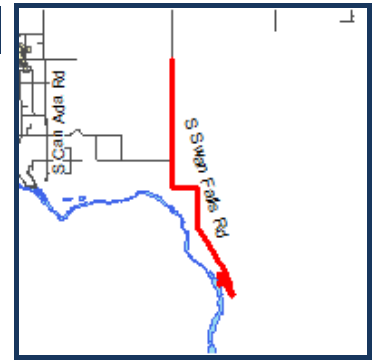
Total Programmed Cost: \$5,372

Total Cost (Prev. + Prog.): \$5,798

COMPASS PM:

Transportation Safety
Community Infrastructure
Open Space
Health

Federal PM:



Project Description : Add five-foot shoulders to Swan Falls Road from just north of Initial Point Road to the southern terminus of the roadway using Federal Lands Access Program funds. Project will also improve accessibility to Bureau of Land Management facilities. Project managed by Western Federal Lands.

Funding Source	FLAP		Program				Total	Local Match 7.34%		
	Cost Year*	Preliminary Engineering	Preliminary Engineering Consulting	Right-of-Way	Utilities	Construction Engineering		Construction	Federal Share	Local Share
	2022	0	20	0	0	0	0	20	19	1
	2023	0	150	0	0	0	0	150	139	11
	2024	0	213	0	0	0	4,045	4,258	3,945	313
	2025	0	0	0	0	539	405	944	875	69
Fund Totals:		\$0	\$383	\$0	\$0	\$539	\$4,450	\$5,372	\$4,978	\$394

*PD = Preliminary Development (projects with development activity but no programmed year of construction)