



COMPASS
COMMUNITY PLANNING ASSOCIATION
of Southwest Idaho

BOARD PACKET

January 27, 2014

700 N. East 2nd Street, Suite 200

Meridian, ID 83642

P. 208.855.2558

F.208.855.2559

www.compassidaho.org

**COMMUNITY PLANNING ASSOCIATION
BOARD MEETING CALENDAR
FEBRUARY 2014 – JULY 2014**

COMPASS BOARD MEETING DATE/TIME	LOCATION	KEY ITEMS
Monday, February 24, 2014	COMPASS 1st Floor Board Room 700 NE 2nd Street Meridian, Idaho	Approve List of New Project Priorities for the FY2015-2019 Regional Transportation Improvement Program
Monday, March 17, 2014	COMPASS 1st Floor Board Room 700 NE 2nd Street Meridian, Idaho	Approve Development Tracking Process Accept 2014 Population Estimates Approve FY2015 General and Special Membership Dues
Monday, April 21, 2014	COMPASS 1st Floor Board Room 700 NE 2nd Street Meridian, Idaho	Approve FY2014 Implementation Grant Recipients Approve Changes to TMA Guidebook Approve Changes to Regional Transportation Improvement Program (TIP) Amendment Policy
Monday, May 19, 2014	COMPASS 1st Floor Board Room 700 NE 2nd Street Meridian, Idaho	TBD
Monday, June 16, 2014	COMPASS 1st Floor Board Room 700 NE 2nd Street Meridian, Idaho	Approve Priorities for End-of-Year Program Approve TIP Application Process and Guide
Monday, July 21, 2014	COMPASS 1st Floor Board Room 700 NE 2nd Street Meridian, Idaho	Adopt Resolution Approving <i>Communities in Motion 2040</i> (CIM 2040) Accept <i>Communities in Motion 2040</i> Performance Monitoring Report Approve Revised Development Review Protocol

MAKING A MOTION:

1. **Seek recognition from the chair.**
2. **When you are recognized, say, "I move..."**
State your motion clearly, concisely, and completely.
3. **Wait for someone to "second" your motion.**
A "second" does not imply the person making the second agrees with the motion – only that he/she agrees it should be debated.
4. **Wait while the chair restates the motion.**
Be prepared to provide the motion to the chair in writing, if needed or requested, to ensure the chair accurately restates it.
5. **Respectfully debate your motion.**
As the person making the motion, you have the right to speak first, but do not have to. When you speak, state your opinion then respectfully listen to, and consider, other opinions.
6. **Wait for the chair to take a vote.**
After discussion is complete, the chair will call for a vote.
7. **Listen as the chair announces the result of the vote.**

Motions to Protect Rights:
• Division of the Assembly
• Point of order
• Appeal chair's ruling
• Point of information
• Parliamentary inquiry
Motions to Choose Voting Methods:
• Vote by ballot, roll call, counted vote
• Choose method of nominations
• Open or close nominates or the polls
Motions to Delay Action:
• Refer to a committee
• Postpone to a definite time
• Recess
• Adjourn
• Postpone indefinitely
• Lay on the table
Motions to Vary the Procedures:
• Suspend the rules
• Divide the question
• Request to withdraw a motion
• Request relief from duty – or resign
Motions to Re-examine:
• Reconsider
• Rescind/Amend something previously adopted
• Take from the table
• Discharge a committee

To Change a Proposed Motion:
Amend Motions to Raise Urgent Issues:
• Question of privilege
• Orders of the day
• Object to consideration
Motions to Control Debate:
• Limit debate
• Previous question

TABLE OF RULES RELATING TO MOTIONS:

Motion	Debate?	Amend?	Vote
Adjourn	No	No	Majority
Amend	Yes	Yes	Majority
Amend Something Previously Adopted	Yes	Yes	(a) Majority with notice; or (b) 2/3; or (c) Majority of entire membership
Appeal	Normally	No	Majority in negative required to reverse chair's decision
Commit	Yes	Yes	Majority
Debate, Close (Previous Question)	No	No	2/3
Debate, Limit or Extend Limits of	No	Yes	2/3
Main Motion	Yes	Yes	Majority
Postpone	Yes	Yes	Majority
Previous Question	No	No	2/3
Recess	No	Yes	Majority
Reconsider	If motion to be reconsidered debatable	No	Majority
Rescind	Yes	Yes	(a) Majority with notice; or (b) 2/3; or (c) Majority of entire membership
Refer (Commit)	Yes	Yes	Majority
Suspend the Rules (of Order)	No	No	2/3
Suspend the Rules (standing or convention standing rules)	No	No	Majority
Voting, motions relating to	No	Yes	Majority



**BOARD OF DIRECTORS' MEETING
JANUARY 27, 2014 – 1:30 P.M.
COMPASS, 1ST FLOOR BOARD ROOM
700 NE 2ND STREET, MERIDIAN IDAHO**

NOTICE: The online document includes bookmarks at the left of the screen that are named to correspond to agenda items that have attachments. Clicking on a bookmark will take you directly to the named document.

**** AGENDA ****

I. CALL TO ORDER (1:30)

II. PLEDGE OF ALLEGIANCE

III. AGENDA ADDITIONS/CHANGES

IV. OPEN DISCUSSION/ANNOUNCEMENTS

V. CONSENT AGENDA

- Page 3 *** A. Approve December 16, 2013, Board Meeting Minutes**
- Page 7 *** B. Receive Approved November 19, 2013, Executive Committee Meeting Minutes**
- Page 10 *** C. Receive Approved August 8, 2013, Finance Committee Meeting Minutes**
- Page 12 *** D. Confirm COMPASS Non-Elected Board Members and Alternate Members**
- Page 13 *** E. Confirm Standing Committee Memberships**

VI. ACTION ITEMS

- 1:35 **A. Confirm CY2014 Board Officers: Chair, Chair Elect, Vice Chair, and Immediate Past Chair. Elect Secretary-Treasurer** **Matt Stoll**
COMPASS Bylaws require the Board annually confirm ascension of new Board Officers and election of a new Secretary/Treasurer.
- 1:45 **B. Confirm Executive Committee Representatives for Cities under 25,000 in Population** **Matt Stoll**
COMPASS Bylaws require the Board confirm Executive Committee representatives for Cities under 25,000 in population.
- 1:55 Page 19 *** C. Adopt Resolution 04-2014 Approving Revision 1 of the FY2014 Unified Planning Work Program (UPWP)** **Megan Larsen**
Megan Larsen will seek adoption of Revision 1 of the FY2014 UPWP.
- 2:10 Page 28 *** D. Adopt Resolution 05-2014 Approving Changes to the Federal Aid Functional Map for 2025** **Charles Trainor**
Charles Trainor will seek adoption of changes leading to creation of the 2025 Federal Aid Functional Classification Map to replace the current 2015 map.

700 N. East 2nd Street,
Suite 200
Meridian, ID 83642
P. 208.855.2558
F.208.855.2559

2:25 Page 35 *E. **Adopt Resolution 06-2014 Amending the FY2014-2018 Regional Transportation Improvement Program (TIP)** Toni Tisdale
Toni Tisdale will seek adoption of Resolution 06-2014 amending the FY2014-2018 TIP to eliminate grouping from the program, correct transit projects, and move FY2015 study funding to FY2018.

VII. INFORMATION/DISCUSSION ITEMS

2:35 **A. Update from Foundation for Ada Canyon Trails Systems (F.A.C.T.S.) Committee**
F.A.C.T.S. representatives will provide information on their mission and engagement with COMPASS.

2:55 Page 41 *B. **Review Final List of Approved Funded Projects and Unfunded Needs in *Communities in Motion* 2040** Liisa Itkonen
*Liisa Itkonen will present the finalized list of approved funded projects and unfunded needs for *Communities in Motion* 2040.*

VIII. EXECUTIVE DIRECTOR'S REPORT (INFORMATION ONLY) (3:05)

Page 53 *A. **Staff Activity Report**

Page 59 *B. **Status Report – Current Air Quality Efforts**

Page 60 *C. **Status Report – Current Transportation Project Information**

Page 69 *D. **Status Report – Standing Committees' Attendance**

Page 73 *E. **Status Report – Administrative Modifications**

Page 85 *F. **Status Report – State and Federal Legislative Issues**

IX. ADJOURNMENT (3:10)

***Enclosures. Times are approximate. Agenda is subject to change.**



**BOARD OF DIRECTORS' MEETING
DECEMBER 16, 2013
COMPASS, 1ST FLOOR BOARD ROOM
700 NE 2ND STREET
MERIDIAN, IDAHO**

****MINUTES****

ATTENDEES: Kathy Alder, Commissioner, Canyon County
Rebecca Arnold, Commissioner, Ada County Highway District
Nichoel Baird Spencer for Jim Reynolds, Mayor, City of Eagle
Dave Bieter, Mayor, City of Boise, **Immediate Past Chair**
John Brunelle, Capitol City Development Corporation
Elaine Clegg, Councilwoman, City of Boise
Tom Dale, Mayor, City of Nampa, **Vice Chair**
Tammy de Weerd, Mayor, City of Meridian
John Evans, Mayor, Garden City
Kelli Fairless, Valley Regional Transit
Daren Fluke for TJ Thomson, Councilman, City of Boise
John Franden, Commissioner, Ada County Highway District
Craig Hanson, Commissioner, Canyon County
Dave Jones, Idaho Transportation Department
Bruce Krosch, Southwest District Health, Ex officio
John McEvoy, Commissioner, Canyon Highway District #4
Bryce Millar, Commissioner, Nampa Highway District #1, **Chair**
Nathan Mitchell, Mayor, City of Star
Garret Nancolas, Mayor, City of Caldwell
Greg Nelson, Mayor, City of Kuna
Brent Orton, City of Caldwell
Charlie Rountree, Councilman, City of Meridian, **Chair Elect**
Steven Rule, Commissioner, Canyon County
Matt Stoll, Executive Director, Community Planning Association, Ex officio
Martin Thorne, Councilman, City of Nampa
Jim Tibbs, Commissioner, Ada County
Pete Wagner, Department of Environmental Quality
Dave Wallace for Sara Baker, Commissioner, Ada County Highway District, **Secretary/Treasurer**
Rick Yzaguirre, Commissioner, Ada County

700 N. East 2nd Street, Suite 200

Meridian, ID 83642

P. 208.855.2558

F.208.855.2559

www.compassidaho.org

MEMBERS ABSENT: Dave Case, Commissioner, Ada County
David Hensley, Governor's Office, Ex officio
Patrick Rice, Greater Boise Auditorium District, Ex officio
David Smith, Boise State University
Darin Taylor, Mayor, City of Middleton
Craig Telford, Mayor, City of Parma

OTHERS: Nancy Brecks, Community Planning Association
Ken Burgess, Veritas Advisors
Julie DeLorenzo, Idaho Transportation Department
Liisa Itkonen, Community Planning Association
Kathleen Lacey, City of Boise
Megan Larsen, Community Planning Association
Rebecca Lemmons, Central District Health Department
Justin Lucas, City of Meridian
Amy Luft, Community Planning Association
Don Matson, Community Planning Association
Carl Miller, Community Planning Association
Toni Tisdale, Community Planning Association

CALL TO ORDER:

Chair Millar called the meeting to order at 1:54 pm.

AGENDA ADDITIONS/CHANGES

No additions or changes were requested.

OPEN DISCUSSION/ANNOUNCEMENTS

Several announcements were made by staff and Board members.

CONSENT AGENDA

- A. Approve November 18, 2013, Board Meeting Minutes**
- B. Receive Approved October 15, 2013, Executive Committee Meeting Minutes**
- C. Establish 2014 COMPASS Board and Executive Committee Meeting Dates and Location**

Dave Bieter moved and Charlie Rountree seconded approval of the Consent Agenda as presented. Motion passed unanimously.

ACTION ITEMS

- A. Approve 2014 State Legislative Position Statements**

Ken Burgess presented 2014 draft state legislative position statements addressing transportation revenue, local option tax authority, transportation access management, and bicycle safety as recommended by the Executive Committee.

After discussion, **John McEvoy moved and Kathy Alder seconded approval of the 2014 state legislative position statements as presented. Motion passed with Pete Wagner abstaining.**

B. Approve Updated COMPASS FY2015-2017 Strategic Plan

Matt Stoll presented the updated COMPASS *FY2015-2017 Strategic Plan*.

After discussion, **Elaine Clegg moved and John Evans seconded approval of the updated COMPASS *FY2015-2017 Strategic Plan* as presented. Motion passed unanimously.**

C. Approve Updated COMPASS Employment Policies and Procedures Manual

Megan Larsen presented the updated *COMPASS Employment Policies and Procedures* manual.

After discussion, **Martin Thorne moved and Charlie Rountree seconded approval of the updated *COMPASS Employment Policies and Procedures* manual as presented. Motion passed unanimously**

D. Approve Implementation Policies for *Communities in Motion 2040*

Don Matson presented the implementation policies for *Communities in Motion 2040*.

After discussion, **Elaine Clegg moved and Kelli Fairless seconded approval of the implementation policies for *Communities in Motion 2040* as presented. Motion passed unanimously.**

E. Approve *Communities in Motion 2040* Performance Measures and Targets

Carl Miller and Rebecca Lemmons presented 56 *Communities in Motion 2040* performance measures and targets as recommended for Board approval by the CIM 2040 Planning Team.

After discussion, **Brent Orton moved and Elaine Clegg seconded approval of the *Communities in Motion 2040* performance measures and targets as presented. Motion passed unanimously.**

F. Adopt Resolution 03-2014 Amending the FY2014-2018 Regional Transportation Improvement Program

Toni Tisdale presented Resolution 03-2014 amending the FY2014-2018 Regional Transportation Improvement Program adding projects awarded funding through a statewide competitive process, and carryover a transit project from FY2013 to FY2014.

After discussion, **Garret Nancolas moved and Charlie Rountree seconded adoption of Resolution 03-2014 amending the FY2014-2018 Regional Transportation Improvement Program as presented. Motion passed unanimously.**

INFORMATION/DISCUSSION ITEM

A. Status Report - Finance Committee

Finance Committee Chair Rebecca Arnold presented a status report on action taken at the December 12, 2013, Finance Committee meeting.

Chair Elect Rountree requested any board members interested in sitting on the Finance Committee in 2014 to please contact him.

B. Review Complete Streets Level of Service Model and Maps

Carl Miller reviewed Complete Streets Level of Service model and maps, which is one tool to implement the COMPASS Complete Streets Policy and evaluate the completeness of transportation corridors.

OTHER

Matt Stoll reviewed format changes to the Board meeting packet

ADJOURNMENT

Tammy de Weerd moved and John Franden seconded adjournment at 3:01 pm. Motion passed unanimously.

Dated this 27th day of January 2014.

Approved:

**By: _____
Bryce Millar, Chair
Community Planning Association of
Southwest Idaho**

Attest:

**By: _____
Matthew J. Stoll, Executive Director
Community Planning Association of
Southwest Idaho**

T:\FY14\900 Operations\990 Direct Operations Maint\Board\2014 agendaminutes\minutes12162013.doc

**EXECUTIVE COMMITTEE MEETING
NOVEMBER 19, 2013
COMPASS 2ND FLOOR LARGE CONFERENCE ROOM
MERIDIAN, IDAHO**

****MINUTES****



- ATTENDEES:** Sara Baker, Commissioner, Ada County Highway District, **Secretary-Treasurer**
Tom Dale, Mayor, City of Nampa, **Vice Chair**
Larry Maneely for Dave Case, Commissioner, Ada County
Bryce Millar, Commissioner, Nampa Highway District #1, **Chair**
Jim Reynolds, Mayor, City of Eagle for Nathan Mitchell, Mayor, City of Star
Charlie Rountree, Councilman, City of Meridian, **Chair Elect**
Steve Rule, Commissioner, Canyon County
Darin Taylor, Mayor, City of Middleton
- MEMBERS ABSENT:** Dave Bieter, Mayor, City of Boise, **Immediate Past Chair**
Garret Nancolas, Mayor, City of Caldwell
- OTHERS PRESENT:** Nancy Brecks, Community Planning Association
Ken Burgess, Veritas Advisors
Megan Larsen, Community Planning Association
Amy Luft, Community Planning Association
Matt Stoll, Executive Director, Community Planning Association
Toni Tisdale, Community Planning Association
Dave Wallace, Ada County Highway District

CALL TO ORDER:

Chair Millar called the meeting to order at 2:50 pm.

AGENDA ADDITIONS/CHANGES

None.

OPEN DISCUSSION/ANNOUNCEMENTS

None.

CONSENT AGENDA

- A. Approve October 15, 2013, Executive Committee Meeting Minutes**

Charlie Rountree moved and Steve Rule seconded approval of the Consent Agenda as presented. Motion passed unanimously.

ACTION ITEMS

A. Establish December 16, 2013, COMPASS Board Agenda

Matt Stoll presented staff proposed Agenda Items 1-18 for the December 16, 2013, Board meeting and requested the latitude to amend the agenda as necessary.

After discussion, **Sara Baker moved and Jim Reynolds seconded approval of December 16, 2013, Board meeting Agenda Items 1-18 as presented. Matt Stoll has the latitude to amend the agenda as necessary. Motion passed unanimously.**

B. Recommend Board Approval of 2014 State Legislative Position Statements

Ken Burgess presented proposed 2014 state legislative position statements.

Sara Baker requested that Ken Burgess develop a draft position to codify in state law that 38% of federal funds coming into the state of Idaho, either normally or through redistribution are distributed proportionally based on urban/rural population to the local highway districts, cities, and counties. This position should be similar to the codification of the distribution of the federal highway user funds, which requires that 38% of those funds be distributed to local entities.

In order to establish a distribution percentage for the draft position, Matt Stoll said COMPASS staff will review the historical expenditure of federal funds in Idaho, particularly in Ada and Canyon counties, over five year and ten year periods. COMPASS staff will also research how federal funds are distributed in other states.

Charlie Rountree requested COMPASS staff research what share of Idaho's total federal and state fuel tax revenues are generated in Ada and Canyon Counties, and what portion of that share comes back to the two counties in the form of transportation dollars.

After discussion, **Tom Dale moved and Charlie Rountree seconded to recommend Board approval of the draft 2014 state legislative position statements as presented. Ken Burgess was directed to draft a legislative position statement based on Sara Baker's comments, for Executive Committee review at the December 2013 meeting. Motion passed unanimously.**

Steve Rule noted for the record his opposition to Option 2. Local Option Tax Authority.

C. Approve Board Member Travel

Matt Stoll presented a travel request for Charlie Rountree to attend the NARC Regional Conference of Regions in February 2014 as COMPASS' representative.

After discussion, **Darin Taylor moved and Tom Dale seconded approval of the travel request as presented. Motion passed unanimously.**

D. Authorize Solicitation of Nominations for CY2014 COMPASS Board Officers

Matt Stoll requested authorization to solicit nominations for CY2014 secretary/treasurer and the chair-elect positions.

After discussion, **Charlie Rountree moved and Darin Taylor seconded to send forth a slate of recommended candidates for the chair-elect and secretary/treasurer positions: Garret Nancolas as chair elect and Steve Rule as secretary/treasurer. Motion passed unanimously.**

INFORMATION/DISCUSSION ITEM

A. Status Report - End-of-Year Sweep

Matt Stoll provided a status report on the November 1, 2013, meeting with COMPASS and ITD regarding ITD staff not following ITD Board and administrative policy in deciding how the End-of-Year sweep funds were distributed and the lack of notification of their actions.

After discussion, **it was agreed to recommend the COMPASS Board revoke project grouping in the Regional Transportation Improvement Program and to go back to listing projects by key numbers, which is more transparent.**

Matt said COMPASS staff will track and review with member agencies staff any ITD board or administrative policies ITD is suggesting to modify.

ADJOURNMENT

Charlie Rountree moved and Steve Rule seconded adjournment at 3:15 pm. Motion passed unanimously.

Dated this 17th day of December 2013.

Approved:

**By: _____
Bryce Millar, Chair
Community Planning Association
of Southwest Idaho**

Attest:

**By: _____
Matthew J. Stoll, Executive Director
Community Planning Association of
Southwest Idaho**

**FINANCE COMMITTEE MEETING
AUGUST 8, 2013
COMPASS 2ND FLOOR LARGE CONFERENCE ROOM
MERIDIAN, IDAHO**

****MINUTES****



- ATTENDEES:** Rebecca Arnold, Commissioner, Ada County Highway District, **Chair**
John McEvoy, Commissioner, Canyon Highway District #4
Charlie Rountree, Councilman, City of Meridian
Steve Rule, Commissioner, Canyon County, **Vice Chair**, via telephone
Rick Yzaguirre, Commissioner, Ada County
- MEMBERS ABSENT:** Sara Baker, Commissioner, Ada County Highway District
Garret Nancolas, Mayor, City of Caldwell
- OTHERS PRESENT:** Nancy Brecks, Community Planning Association
Keith Holmes, Community Planning Association
Megan Larsen, Community Planning Association
Matt Stoll, Community Planning Association
Josh Tyrell, Harris & Co., PLLC

CALL TO ORDER:

Chair Arnold called the meeting to order at 12:00 pm.

AGENDA ADDITIONS/CHANGES

None.

OPEN DISCUSSION/ANNOUNCEMENTS

None.

CONSENT AGENDA

- A. Approve June 20, 2013, Finance Committee Meeting Minutes**

Charlie Rountree moved and Steve Rule seconded approval of the Consent Agenda as presented. Motion passed unanimously.

INFORMATION/DISCUSSION ITEM

- A. Status Report – FY2013 General and Special Membership Dues Received To Date**

Keith Holmes provided a status report on General and Special membership dues received to date. City of Star and BSU dues are outstanding, but expected.

ACTION ITEMS

A. Approve FY2013 Audit Process

Josh Tyree, Harris & Co., PLLC, provided an overview of the FY2013 audit process. Field work will begin in November 2013 and is anticipated to take 3 days.

After discussion, **Steve Rule moved and Charlie Rountree seconded to approve the audit process as outlined by Josh Tyree and authorize the Chair to sign the letter of engagement. Motion passed unanimously.**

B. Approve Variance Report for October 1, 2012-June 30, 2013

Keith Holmes presented the Variance Report for October 1, 2012 - June 30, 2013.

After discussion **Charlie Rountree moved and John McEvoy seconded approval of the Variance Report for October 1, 2012 – June 30, 2013, as presented. Motion passed unanimously.**

ADJOURNMENT

Chair Arnold adjourned the meeting at 12:20 pm.

Dated this 12th day of December 2013.

Approved:

**By: _____
Rebecca Arnold, Chair**

Attest:

**By: _____
Steve Rule, Vice Chair**

COMPASS BOARD MEETING AGENDA ITEM V-D

Date: January 27, 2014



Topic: COMPASS Non-Elected Board Members and Alternate Members

Background/Summary:

COMPASS' Joint Powers Agreement, under Section 6.1.7. e.1, requires non-elected Board members and non-elected Board alternates be confirmed by the Board. This is done at the beginning of each calendar year. There is no requirement that elected alternates be confirmed.

Non-Elected Board Members	Non-Elected Board Alternates
Boise State University: David Smith Capitol City Development Corporation: John Brunelle Southwest District Health Department: Bruce Korsch, Ex officio City of Caldwell: Brent Orton Department of Environmental Quality: Pete Wagner Governor's Office: David Hensley, Ex officio Greater Boise Auditorium District: Patrick Rice, Ex officio Idaho Transportation Department: Vacant Valley Regional Transit: Kelli Fairless	Ada County: Richard Beck Megan Leatherman Larry Maneely Mark Perfect Ada County Highway District: Dave Wallace Boise State University: Nicole Nimmons Canyon County: Patricia Nilsson Central District Health Department: Russ Duke, Ex officio City of Boise: Daren Fluke Karen Gallagher Kathleen Lacey City of Caldwell Robb MacDonald City of Eagle: Nichoel Baird Spencer Bill Vaughan City of Garden City: Elizabeth Conner City of Meridian: Caleb Hood City of Nampa: Michael Fuss Sheri Murray Department of Environmental Quality: Dave Luft Idaho Transportation Department: Aaron Bauges Amy Schroeder Valley Regional Transit: Rhonda Jalbert

Request/Recommendation

Staff seeks Board approval of the COMPASS non-elected Board members and Board alternate members.

Implication (policy and/or financial):

Meets Joint Powers requirement.

More Information:

1) For detailed information contact: Matt Stoll at 475-2266 or at mstoll@compassidaho.org.
 T:\FY14\900 Operations\990 Direct Operations Maint\Board\2014Board Non Elected and Alternates.doc

Demographic Advisory Committee

The Demographic Advisory Committee (DAC) is responsible for demographic and development monitoring activities conducted at COMPASS, including recommendation of projects and/or research to be performed and evaluation of research proposals requested by COMPASS or other agencies. The committee helps develop and maintain the demographic projection data for Ada and Canyon Counties as used by COMPASS for transportation modeling activities.

Representatives are from public and private agency staff concerned with demographic and related issues in Ada and Canyon Counties.

Member Agency	Participants	Votes
Ada County Development Services	Brent Danielson Richard Beck	3
Ada County Highway District	Christy Little Jeff Lowe	3
Boise State University	Michail Fragkias	1
Canyon County Development Services	Jennifer Almeida Patricia Nilsson Deb Root	3
Canyon Highway District No. 4	Kathy Knapp	2
City of Boise	Bruce Eggleston Jennifer Tomlinson	3
City of Caldwell	Brian Billingsley	2
City of Eagle	Nichoel Baird Spencer	1
City of Garden City	Jenah Thornborrow	1
City of Kuna	Wendy Howell	1
City of Meridian	Brian McClure	2
City of Middleton	Darin Taylor	1
City of Nampa	Norm Holm	2
City of Star	Nathan Mitchell	1
Idaho Department of Environmental Quality	David Luft	1
Idaho Transportation Department	Mark Wasdahl	1
Nampa Highway District No. 1	Eric Shannon	1
Public Participation Committee	Jeannette Ross	1
Valley Regional Transit	Jordan Swain	1
Ex officio Member	Participants	
Chamber of Commerce – Ada County	Mark Tate	N/A
Chamber of Commerce – Canyon County	Tracy Kasper	N/A
COMPASS	Carl Miller	N/A
Development Community – Ada County	Greg Manship	N/A
Development Community – Canyon County	Chris Findlay	N/A
Major Utilities	Brad Snow/ Byron Defenbach	13 N/A





Finance Committee

The purpose of the Finance Committee is to provide guidance to management and to establish reasonable, but not absolute, assurance regarding internal policies, procedures and controls for the sound operation of COMPASS.

The committee is composed of seven COMPASS board members: the COMPASS board Secretary/Treasurer, three members from Ada County and three members from Canyon County. The term of office for committee members are two-year staggered terms, except for the Secretary/Treasurer whose term is one year. There is no limit to the number of terms a member may serve. Terms are numbered except for the Secretary/Treasurer as odd-year/even-year terms.

Vacancies on the committee are filled by the Board Chair and presented annually to the COMPASS board for confirmation at the first meeting following the annual meeting of the board. In the event that a duly appointed committee member is unable to attend a meeting of the committee, that member may arrange for an alternate to participate in committee deliberations on his/her behalf.

Name	Member Agency	Term
Secretary/Treasurer	Canyon County	One year term ending 1/2015
Ada County		
Rebecca Arnold	Ada County Highway District	Even (expires 1/2016)
Charlie Rountree	City of Meridian	Odd (expires 1/2015)
Rick Yzaguirre	Ada County	Even (expires 1/2016)
Canyon County		
Craig Hanson	Canyon County	Odd (expires 1/2015)
John McEvoy	Canyon Highway District No. 4	Even (expires 1/2016)
Garret Nancolas	City of Caldwell	Odd (expires 1/2015)

T:\FY14\800 System Maintenance\820 Committee Support\2014 Committee Membership Lists\Finance Committee.doc



Public Participation Committee (PPC)

The Public Participation Committee (PPC) will encourage community involvement in transportation planning issues in the Community Planning Association of Southwest Idaho (COMPASS) planning area.

Public input into COMPASS planning efforts is core to the mission of a metropolitan planning organization (MPO). The PPC will advise and assist COMPASS staff on the approach and delivery for public involvement activities. PPC members may also attend as voting members to standing agency committees to convey information to the PPC. In this role, members will keep the PPC informed and educated about transportation planning issues so they can better convey information to the public, and thus help ensure an open public process.

The PPC will consider the needs of residents regarding all modes of transportation to ensure a community-supported transportation planning process. The PPC will:

- Solicit and consider input from groups concerned with, interested in, or affected by transportation plans or programs, including the traditionally underserved;
- Disseminate information about plans or decisions to the community;
- Attend and/or assist with public meetings and outreach opportunities (active participant);
- Act as an ambassador to the community for COMPASS;
- Ensure that the public is involved in planning process;
- Provide recommendations to COMPASS for updates to the "Public Involvement Policy" and working public involvement plans;
- Develop associations with other organizations interested in transportation issues, serve as a liaison between the PPC and other organizations to which the member belongs, and will keep the PPC informed about concerns from other organizations.

Members	Votes
Miguel Gaddi	1
Chris Lavelle	1
Rebecca Lemmons	1
Scott Lowe	1
Jeff Madsen	1
Ross Mason	1
John McClellan	1
Jeannette Ross	1
Deanna Smith	1
Nicole Stern	1
Kristi Watkins	1
Joshua Wilson	1
Ex officio Member	
Amy Luft, COMPASS	N/A

The Public Participation Committee will encourage community involvement in Transportation planning issues in the Community Planning Association of Southwest Idaho.

T:\FY14\800 System Maintenance\820 Committee Support\2014 Committee Membership Lists\Public Participation Committee.docx



Regional Geographic Advisory Committee (RGAC)

Members of the Regional Geographic Advisory Committee are key staff or otherwise qualified representatives of COMPASS' member agencies, having an interest in developing comparable regional geographic data sets.

Each member of the committee has an equal voting weight. The mission of the Regional Geographic Advisory Committee is to be a coordinated body of Planning and GIS professionals providing a forum to promote the compatibility and expansion of regional data for analysis purposes.

Member Agency	Participants	Votes
Ada County IT	Todd Buchanan	1
Ada County Assessors	Anne Kawalec	1
Ada County Highway District	Chuck Spencer	1
Canyon Highway District No. 4	Kathy Knapp	1
Canyon County Development Services	Sarah Higuera	1
City of Boise	Jim Hetherington	1
City of Caldwell	Dave Marston	1
City of Eagle	Bill Vaughan	1
City of Garden City	Erika Akin	1
City of Kuna	Mike Borzick	1
City of Meridian	Robin Jack	1
City of Nampa	Craig Tarter	1
Emergency Communications Bureau	Travis Tyson	1
Idaho Transportation Department	Brynn Lacabanne	1
Nampa Highway District No. 1	Eric Shannon	1
Public Participation Committee	Miguel Gaddi / Kristi Watkins	1
Ex officio Member	Participants	
COMPASS	Eric Adolfson	N/A

Other agencies and members may be added as needed.

T:\FY14\800 System Maintenance\820 Committee Support\2014 Committee Membership Lists\Regional Geographic Advisory Committee.docx

Regional Technical Advisory Committee (RTAC)



COMPASS
COMMUNITY PLANNING ASSOCIATION
of Southwest Idaho

The Regional Technical Advisory Committee is charged with development of the Unified Planning Work Program (UPWP), development of the Transportation Improvement Program (TIP), review of transportation related projects and plans, and constitute a primary communications link between COMPASS and its members.

The members of the Regional Technical Advisory Committee are key staff or otherwise qualified representatives of COMPASS' member agencies, preferably having a transportation-related technical background. Appointments are made by members through a written notice specifying the name(s) of the appointee(s) and any alternates as well as the duration of the appointment(s) when applicable.

Each member representing a COMPASS member government has the same weight of votes as enjoyed by that member on the COMPASS Board under the Joint Powers Agreement. Members authorized under the bylaws and not representing a COMPASS Board member are entitled to one (1) vote. When entitled to more than one vote, the member's votes may be exercised by separate persons or by one or more persons representing the member government.

Member Agency	Participants	Votes
Ada County Development Services	Richard Beck Meg Leatherman	3
Ada County Highway District	Sabrina Anderson Tom Ferch Ryan Head	3
Boise State University	Nicole Nimmons	1
Canyon County Development Services	Jennifer Almeida Patricia Nilsson Deb Root	3
Canyon Highway District No. 4	Chris Hopper	1
City of Boise	Daren Fluke Karen Gallagher Kathleen Lacey	3
City of Caldwell	Robb MacDonald	2
City of Eagle	Nichoel Baird Spencer	1
City of Garden City	Jenah Thornborrow	1
City of Kuna	Wendy Howell	1
City of Meridian	Justin Lucas	2
City of Middleton	Darin Taylor	1
City of Nampa	Clair Bowman	2
City of Parma	Bob Flowers	1
City of Star	Nathan Mitchell	1
Idaho Department of Environmental Quality	Michael Toole	1
Idaho Transportation Department	Michael Garz	1
Nampa Highway District No. 1	Eric Shannon	1
Public Participation Committee	Deanna Smith	1
Valley Regional Transit	Jordan Swain	1
Ex Officio Members	Participants	Votes
Central District Health Department	Rob Howarth	N/A
COMPASS	Don Matson	N/A
Governor's Office	David Hensley	N/A



Transportation Model Advisory Committee (TMAC)

The Transportation Model Advisory Committee provides guidance on model research, applications, assumptions, updates, and public education related to the travel demand model.

Under its bylaws, members are drawn from staff or appointees of member agencies. Members shall have transportation/air quality modeling and/or land use technical experience. The bylaws state the COMPASS Board shall grant membership to four transportation/land use/air quality professionals by recommendation of the public sector members on this committee.

Member Agency	Participants	Votes
Ada County Development Services	Meg Basham	1
Ada County Highway District	Shawn Martin Amar Pillai	2
Canyon County Development Services	Jennifer Almeida Patricia Nilsson	1
Canyon Highway District No. 4	Tim Richard	1
City of Boise	Karen Gallagher	1
City of Meridian	Austin Petersen	1
City of Nampa	Jeff Barnes Clair Bowman	1
Idaho Department of Environmental Quality	David Luft	1
Idaho Transportation Department	Kevin Sablan Dave Szplett	2
Nampa Highway District No. 1	Eric Shannon	1
Public Participation Committee	Jeff Madsen	1
Valley Regional Transit	Jordan Swain	1
Professional Appointees	Participants	
Holladay Engineering Co.	Vern Brewer	1
Keller Associates	Steve Lewis	1
Pline Engineering, Inc.	James Pline	1
URS Washington Division	Jay Witt	1
Ex officio Members	Participants	
COMPASS	MaryAnn Waldinger	N/A

T:\FY14\800 System Maintenance\820 Committee Support\2014 Committee Membership Lists\Transportation Model Advisory Committee.docx

COMPASS BOARD AGENDA ITEM VI-C

Date: January 27, 2014



Topic: Revision 1 of the FY2014 Unified Planning Work Program

Background/Summary:

Federal metropolitan planning rules require that COMPASS produce a Unified Planning Work Program (UPWP), which is periodically amended to accommodate changes in revenues, expenses, staffing, and scope. These amendments are usually accomplished through a Board resolution with subsequent distribution of the approved resolution and supporting documents to the appropriate funding agencies.

The Finance Committee reviewed the proposed amendments at its December 12, 2013, meeting. The Finance Committee recommended approval of Revision 1 of the FY2014 Unified Planning Work Program as presented, with the caveat that the Board discuss options for use of \$47,427 in unused FY2013 STP-TMA funds. These options are presented in the attachments to this memo.

Revision 1 of the FY2014 UPWP is proposed for the following reasons:

1. To add \$343,002 to revenues to reflect the carry-over of FY2013 Consolidated Planning Grant funds.
2. To carry over \$124,254 in *Communities in Motion* direct expenses from FY2013. These expenses are funded with carry-over Consolidated Planning Grant funds.

To add \$144,875 to total expenses to cover the set-aside for the FY2016 regional orthophotography project (\$70,000), to fund the first year of the grant implementation program (\$50,000), to cover increased costs for family coverage accessed under the health benefits plan (\$14,175), and to cover additional costs in salary to enhance ability to fill a vacant position (\$10,700).

3. To remove \$73,873 of the \$108,265 draw from fund balance that was planned to cover the revenue shortfall in the final version of the FY2014 UPWP. With the carryover of Consolidated Planning Grant funds, the planned draw from fund balance to cover the shortfall is smaller. The planned draw from fund balance is now \$34,392.
4. To add \$50,000 to both revenue and expense to reflect the revenues to be received from the United States Geological Survey and the final costs to complete the FY2013 orthophotography project.

Request/Recommendation:

Staff seeks COMPASS Board adoption of Resolution 04-2014 approving Revision 1 of the FY2014 Unified Work Program.

Implication (policy and/or financial):

Without COMPASS Board adoption of Revision 1 of the FY2014 Unified Planning Work Program, the agency cannot make full use of available financial resources.

More Information:

- 1) Attachments
- 2) For detailed information contact: Megan Larsen, at 475-2228 or mlarsen@compassidaho.org.



RESOLUTION NO. 04-2014

**FOR THE PURPOSE OF APPROVING REVISION 1 OF THE
FY2014 UNIFIED PLANNING WORK PROGRAM**

WHEREAS, the FY2014 Unified Planning Work Program was adopted by the Community Planning Association of Southwest Idaho Board of Directors under Resolution 13-2013, dated August 19, 2013; and

WHEREAS, the Community Planning Association of Southwest Idaho desires to amend the annual Unified Planning Work Program as part of timely reviews; and

WHEREAS, the Community Planning Association of Southwest Idaho desires to incorporate funding and program revisions in the Unified Planning Work Program to recognize federal dollars for both COMPASS and pass-through agreements to other agencies; and

WHEREAS, the attached memorandum and supporting documentation summarizes the adjustments included in Revision 1 of the FY2014 Unified Planning Work Program and is made a part hereof.

NOW, THEREFORE, BE IT RESOLVED, that the Community Planning Association of Southwest Idaho Board of Directors approves by Resolution Revision 1 of the FY2014 Unified Planning Work Program;

BE IT FURTHER RESOLVED, that the Chair and Executive Director are authorized to submit all grant and contract revisions and sign all necessary documents for grant and contract purposes.

DATED this 27th day of January 2014.

APPROVED:

By: _____
Charlie Rountree, Chair
Community Planning Association of
Southwest Idaho

ATTEST:

By: _____
Matthew J. Stoll, Executive Director
Community Planning Association of
Southwest Idaho

**COMMUNITY PLANNING ASSOCIATION OF SOUTHWEST IDAHO
FY2014 UNIFIED PLANNING WORK PROGRAM - Revision 1
REVENUE AND EXPENSE SUMMARY**

REVENUE	FY2014 Original	FY2014 Revision 1
GENERAL MEMBERSHIP		
Ada County	199,803	199,803
Ada County Highway District	199,803	199,803
Canyon Highway District No. 4	11,483	11,483
Nampa Highway District No. 1	11,483	11,483
Boise City	95,805	95,805
Caldwell City	32,607	32,607
Canyon County	129,892	129,892
Eagle City	9,754	9,754
Garden City	5,058	5,058
Kuna City	7,292	7,292
Meridian City	37,180	37,180
Middleton City	4,016	4,016
Nampa City	57,456	57,456
Parma City	1,364	1,364
Star City	2,960	2,960
Subtotal	805,956	805,956
SPECIAL MEMBERSHIP		
Boise State University	8,100	8,100
Capital City Development Corporation	8,100	8,100
Department of Environmental Quality	8,100	8,100
Idaho Transportation Department	8,100	8,100
Valley Regional Transit	8,100	8,100
Subtotal	40,500	40,500
GRANTS AND SPECIAL PROJECTS		
FHWA/FTA - Consolidated Planning Grants		
CPG - FY2013 K# 11590 Ada County - Carry Over		190,827
CPG - FY2013 K# 11590 Canyon County - Carry Over		152,175
CPG - FY2014 K# 12380 Ada County	843,959	843,959
CPG - FY2014 K# 12380 Canyon County	296,526	296,526
Sub Total CPG Grants	1,140,485	1,483,487
STP TMA - K# 12372, off-the-top funds for Planning	306,705	306,705
Subtotal	306,705	306,705
OTHER REVENUE SOURCES		
Contributions for Orthophotography Project		50,000
Idaho Department of Environmental Quality	53,750	53,750
Ada County Air Quality Board	99,950	99,950
Interest Income	4,000	4,000
Subtotal	157,700	207,700
COMPASS REVENUE		
Draw from fund balance	108,265	34,391
TOTAL, ALL RESOURCES	2,559,611	2,878,739

EXPENSE	FY2014 Original	FY2014 Revision 1
SALARY, FRINGE & CONTINGENCY		
Salary	1,099,500	1,126,257
Fringe	492,360	490,478
Medical Expense Reimbursement Plan	5,000	5,000
Salary Contingency (Overtime and Bonus)	20,000	20,000
Sick Time Trade	10,000	10,000
Subtotal	1,626,860	1,651,735
INDIRECT OPERATIONS & MAINTENANCE		
COMPASS	216,000	216,000
Subtotal	216,000	216,000
DIRECT OPERATIONS & MAINTENANCE		
620, Growth and Transportation Monitoring	1,750	1,750
653, Communications and Education	34,250	34,250
661, <i>Communities in Motion</i>	109,500	233,754
685, Transportation Improvement Program	3,200	3,200
701, General Membership Services	75,000	75,000
702, Air Quality Outreach	135,800	135,800
760, Legislative Services	106,050	106,050
801, Staff Development	20,000	20,000
820, Committee Support	2,000	2,000
836, Regional Travel Demand Model	41,500	41,500
860, Geographic Information System Maintenance	1,200	1,200
861, Regional Orthophotography		50,000
862, Regional Data Center	135,500	135,500
990, Direct Operations and Maintenance	51,000	171,000
Subtotal	716,750	1,011,004
COMPASS EXPENSE	2,559,611	2,878,739

COMPASS REVENUE AND EXPENSE SUMMARY		
TOTAL REVENUE	2,451,346	2,844,348
LESS: TOTAL EXPENSES	2,559,611	2,878,739
CHANGE IN FUND BALANCE	(108,265)	(34,391)

COMMUNITY PLANNING ASSOCIATION OF SOUTHWEST IDAHO

Recommended Changes to FY2014 - Revision 1

Summary

FY2014 Original UPWP Revenues	2,559,610	FY 2014 Original UPWP Expenses	2,559,610
1 CPG - FY2013 K #11590; grant funds that were budgeted for FY2013 but were not utilized due to budget savings; these grant funds will be carried into FY2014 and used for other purposes	125,948		
2 CPG - FY2013 K #11590; additional grant funds made available from FHWA/FTA that were not included in the FY2013 Revision 1 budget	92,800		
3 Draw from fund balance to cover shortfall reduced from \$108,265 to \$34,392	(73,873)		
4 CPG - FY2013 K #11590; grant funds for <i>Communities in Motion</i> direct expenditures that were not completed in FY2013 and were carried over to FY2014	124,254	Program 661, <i>Communities in Motion</i> Professional Services, Printing and Public Involvement	124,254
5 Contribution from United States Geological Survey for FY2013 Regional Orthophotography project; funds to be received in FY2014 when project is complete	50,000	Program 861: Final payment for professional services for orthophotography to be made in FY2014 when project is complete	50,000
6		Increase in salary and fringe; more employees accessing family coverage under updated benefit plan; adjust salary range for Assistant Modeler to enhance ability to recruit suitable candidate	24,875
7		Set aside funding for FY2016 Regional Orthophotography Project	70,000
8		First year funding for Grant Implementation Program; approved by Board at November 18, 2013 meeting	50,000
FY2014 Revision 1 UPWP Revenues	2,878,739	FY2014 Revision 1 UPWP Expenses	2,878,739

COMMUNITY PLANNING ASSOCIATION OF SOUTHWEST IDAHO
FY2014 UNIFIED PLANNING WORK PROGRAM - Revision 1
EXPENSES BY WORK PROGRAM NUMBER AND FUNDING SOURCE

WORK PROGRAM NUMBER	EXPENSES					FEDERAL FUNDING SOURCES				MATCH, LOCAL & OTHER FUNDING				TOTAL FUNDING SOURCES
	Work Days	Labor & Indirect Cost	Direct Cost	Total Cost	FY13 CPG	FY14 CPG-Ada	STP-TMA	Total	Match	Local	Other Revenue	Total Local & Other		
					K# 11590	K# 12380	K# 12372	Federal						
601 UPWP/Budget Development and Fed Assurances	320	7%	187,623	-	187,623		97,175	76,676	173,851	13,772			13,772	187,623
605 Multi-Modal Planning Support	229	5%	125,415	-	125,415		116,210		116,210	9,205			9,205	125,415
620 Growth and Transportation System Monitoring	221	5%	96,754	1,750	98,504		91,274		91,274	7,230			7,230	98,504
647 Regional Growth Issues and Options	114	3%	58,831	-	58,831		54,513		54,513	4,318			4,318	58,831
653 Communications and Education	156	4%	84,594	34,250	118,844		78,384		78,384	6,209	34,250		40,459	118,843
661 <i>Communities in Motion</i>	524	12%	291,261	233,754	525,015	148,163	261,641	76,676	486,480	38,536			38,536	525,016
685 Transportation Improvement Program	375	9%	197,341	3,200	200,541		109,145	76,676	185,821	14,720			14,720	200,541
692 Regional Asset and Resource Maintenance Report	80	2%	41,610	-	41,610		38,556		38,556	3,054			3,054	41,610
693 Grant Research and Assistance	81	2%	39,820	-	39,820				-		39,820		39,820	39,820
TOTAL PROJECTS	2,100	48%	1,123,249	272,954	1,396,203	148,163	846,898	230,028	1,225,089	97,044	74,070	-	171,114	1,396,203
701 General Membership Services	175	4%	85,796	75,000	160,796				-		160,797		160,797	160,797
702 Air Quality Outreach	29	1%	17,900	135,800	153,700				-			153,700	153,700	153,700
703 General Public Services	19	0%	8,773	-	8,773				-		8,773		8,773	8,773
705 Transportation Liaison Services	34	1%	23,212	-	23,212				-		23,212		23,212	23,212
710 Complete Streets	24	1%	10,778	-	10,778		9,987		9,987	791			791	10,778
720 State Street Corridor Implementation	23	1%	11,458	-	11,458		10,617		10,617	841			841	11,458
760 Legislative Services	78	2%	57,400	106,050	163,450				-		163,450		163,450	163,450
761 Blueprint for Good Growth	14	0%	8,847	-	8,847		8,198		8,198	649			649	8,847
TOTAL SERVICES	396	9%	224,164	316,850	541,014	-	28,802	-	28,802	2,281	356,232	153,700	512,213	541,015
801 Staff Development	72	2%	37,121	20,000	57,121				-		57,121		57,121	57,121
820 Committee Support	218	5%	99,381	2,000	101,381	62,961			62,961	4,987	33,432		38,419	101,380
836 Regional Travel Demand Model	210	5%	105,281	41,500	146,781		136,007		136,007	10,774			10,774	146,781
842 Congestion Management System	160	4%	79,668	-	79,668		73,821		73,821	5,848			5,848	79,669
860 Geographic Information System Maintenance	334	8%	140,862	1,200	142,062		54,958	76,676	131,634	10,427			10,427	142,061
861 Regional Orthophotography	-	0%	-	50,000	50,000				-			50,000	50,000	50,000
862 Regional Data Center	119	3%	58,009	135,500	193,509	131,878			131,878	14,204	47,427		61,631	193,509
TOTAL SYSTEM MAINTENANCE	1,113	25%	520,322	250,200	770,522	194,839	264,786	76,676	536,301	46,240	137,980	50,000	234,220	770,521
990 Direct Operations / Maintenance	-		-	171,000	171,000				-		167,000	4,000	171,000	171,000
991 Support Services Labor	761	17%	-	-	-				-				-	-
999 Indirect Operations/Maintenance	-		-	-	-				-				-	-
TOTAL INDIRECT/OVERHEAD	761		-	171,000	171,000	-	-	-	-	-	167,000	4,000	171,000	171,000
G R A N D T O T A L	4,370		1,867,735	1,011,004	2,878,739	343,002	1,140,486	306,704	1,790,192	145,565	735,282	207,700	1,088,548	2,878,739

T:\Operations\Accounting & Reporting\UPWP\FY2014\2014 UPWP Rev 1.xls

FY2014 - Revision 1

EXPENSES BY WORK PROGRAM NUMBER AND FUNDING SOURCE

**COMMUNITY PLANNING ASSOCIATION OF SOUTHWEST IDAHO
FY2014 UNIFIED PLANNING WORK PROGRAM - Revision 1
DIRECT EXPENSE SUMMARY**

DESCRIPTION	TOTAL DIRECT	PROFESSIONAL SERVICES (830)	EQUIPMENT / SOFTWARE (834)	BUILDING CONTINGENCY (836)	TRAVEL / EVENTS / EDUCATION (840)	PRINTING (860)	OTHER (863)	PUBLIC INVOLVEMENT (864)	MEETING SUPPORT (865)	LEGAL / LOBBYING (872)	FY2015 CARRY-FORWARD
620 Growth and Transportation System Monitoring	1,750	1,750									
653 Communications and Education	34,250	15,900				4,500	1,000	12,850			
661 <i>Communities in Motion</i>	233,754	154,131				17,123	12,500	50,000			4
685 Transportation Improvement Program	3,200							3,200			
701 General Membership Services	75,000	70,000				1,000		4,000			
702 Air Quality Outreach	135,800	135,000				800					
760 Legislative Services	106,050				9,000		11,100			85,950	
801 Staff Development	20,000				20,000						
820 Committee Support	2,000								2,000		
836 Regional Travel Demand Model	41,500	40,000			1,500						
860 Geographic Information System Maintenance	1,200						1,200				
861 Regional Orthophotopography	50,000	50,000									5
862 Regional Data Center	135,500	25,000	107,500		3,000						
990 Direct Operations / Maintenance	171,000	-	40,000		8,000		120,000		3,000		7,8
GRAND TOTAL	1,011,004	491,781	147,500	-	41,500	23,423	145,800	70,050	5,000	85,950	-

T:\Operations\Accounting & Reporting\UPWP\FY2014\2014 UPWP Rev 1.xls

**COMMUNITY PLANNING ASSOCIATION OF SOUTHWEST IDAHO
 FY2014 UNIFIED PLANNING WORK PROGRAM - Revision 1
 INDIRECT OPERATIONS AND MAINTENANCE EXPENSE SUMMARY**

CATEGORY	ACCOUNT CODE	FY2014 Original	FY2014 Revision 1
Professional Services	930	36,000	36,000
Equipment Repair / Maintenance	936	2,000	2,000
Travel / Education	940	2,500	2,500
Dues	942	14,000	14,000
Publications	943	3,000	3,000
Postage	950	1,500	1,500
Telephone	951	11,500	11,500
Space Rent	952	800	800
Building Maintenance / Association	955	37,000	37,000
Printing	960	2,000	2,000
Advertising	962	5,000	5,000
Audit	970	16,000	16,000
Insurance	971	13,000	13,000
Legal Services	972	10,000	10,000
General Supplies	980	6,000	6,000
Computer Supplies	982	10,500	10,500
Computer Software / Maintenance	983	24,200	24,200
Commuting Incentive	990	500	500
Vehicle Maintenance	991	3,000	3,000
Utilities	992	12,000	12,000
Local Travel	993	4,000	4,000
Other / Miscellaneous	995	1,500	1,500
TOTAL		216,000	216,000

T:\Operations\Accounting & Reporting\UPWP\FY2014\2014 UPWP Rev 1.xls

**COMMUNITY PLANNING ASSOCIATION OF SOUTHWEST IDAHO
FY2014 UNIFIED PLANNING WORK PROGRAM - Revision 1
WORKDAY ALLOCATION**

WORK PROGRAM DESCRIPTION	LEAD STAFF	DIRECTORS	PRINCIPAL PLANNERS	ASSOCIATE PLANNERS	ASSISTANT PLANNERS	OPERATIONS	TOTAL
601 UPWP/Budget Development and Fed Assurances <i>General Project Management (257 days)</i> <i>Track Federal Requirements (16 days)</i> <i>Quadrennial Review (48 days)</i>	ML	90	101	11	-	118	320
605 Multi-Modal Planning Support	WS	-	138	66	23	2	229
620 Growth and Transportation System Monitoring <i>Employment Data Estimates (40 days)</i> <i>Report on Growth & Transportation Patterns (70 days)</i> <i>Population Estimates (57 days)</i> <i>Census Liaison / Clearinghouse (29 days)</i>	CM	-	65	12	144	-	221
647 Regional Growth Issues and Options	CM	-	67	12	35	-	114
653 Communications and Education	AL	4	97	6	8	41	156
661 <i>Communities in Motion</i>	LI	19	331	85	51	38	524
685 Transportation Improvement Program	TT	16	222	5	108	24	375
692 Regional Asset and Resource Maintenance Report	DM	-	44	15	20	1	80
693 Grant Research and Assistance	DM	-	39	7	30	5	81
TOTAL PROJECTS		129	1,104	219	419	229	2,100
701 General Membership Services <i>General Project Management</i> <i>ACHD Support</i> <i>City of Meridian - Fields Innovation District</i> <i>City of Nampa - Extended Population Forecast</i> <i>Members - Development Review/Traffic Impact Studies</i> <i>Members - Area of Influence Analysis</i> <i>VRT - Title VI Survey</i>	CT	-	61	52	54	8	175
702 Air Quality Outreach	AL	-	29	-	-	-	29
703 General Public Services	CT	-	5	5	9	-	19
705 Transportation Liaison Services	MS	14	20	-	-	-	34
710 Complete Streets	CM	-	9	-	15	-	24
720 State Street Corridor Implementation	DM	-	12	-	6	5	23
760 Legislative Services	MS	60	11	-	4	3	78
761 Blueprint for Good Growth	CT	4	8	-	-	2	14
TOTAL SERVICES		78	155	57	88	18	396
801 Staff Development	ML	2	37	7	19	7	72
820 Committee Support	ML	12	15	1	-	190	218
836 Regional Travel Demand Model	MW	-	115	15	80	-	210
842 Congestion Management System	MW	-	80	20	60	-	160
860 Geographic Information System Maintenance	EA	-	35	82	213	4	334
861 Regional Orthophotopography	CT	-	-	-	-	-	-
862 Regional Data Center	CT	1	27	54	33	4	119
TOTAL SYSTEM MAINTENANCE		15	309	179	405	205	1,113
TOTAL DIRECT		222	1,568	455	912	452	3,609
991 Support Services Labor	ML	238	42	5	8	468	761
TOTAL INDIRECT/OVERHEAD		238	42	5	8	468	761
TOTAL LABOR		460	1,610	460	920	920	4,370

**COMMUNITY PLANNING ASSOCIATION OF SOUTHWEST IDAHO
FY2014 UNIFIED PLANNING WORK PROGRAM - Revision 1
Summary of Options for STP Urban Funds**

	Revision 1, As Presented	Option 1	Option 2	Option 3	Option 4	Option 5
REVENUE						
General Membership Dues	805,956	805,956	805,956	805,956	805,956	805,956
Special Membership Dues	40,500	40,500	40,500	40,500	40,500	40,500
FHWA/FTA - Consolidated Planning Grant - FY2013 Carryover	343,002	343,002	343,002	343,002	343,002	343,002
FHWA/FTA - Consolidated Planning Grant - FY2014	1,140,485	1,140,485	1,140,485	1,140,485	1,140,485	1,140,485
STP TMA Off-the-top funds for planning	306,705	306,705	306,705	306,705	306,705	306,705
Other revenue sources	207,700	207,700	207,700	207,700	207,700	207,700
STP-TMA Funds, Carryover from FY2013	-	34,391	47,427	47,427	47,427	47,427
TOTAL REVENUES	2,844,348	2,878,739	2,891,775	2,891,775	2,891,775	2,891,775
EXPENSE						
Salary	1,126,257	1,126,257	1,126,257	1,126,257	1,126,257	1,126,257
Payroll taxes and employee benefits	525,478	525,478	525,478	525,478	525,478	525,478
Direct expenses	961,004	961,004	961,004	961,004	961,004	961,004
Indirect expenses	216,000	216,000	216,000	216,000	216,000	216,000
Grant implementation program, first year funding	50,000	50,000	50,000	63,036	97,427	100,000
TOTAL EXPENSES	2,878,739	2,878,739	2,878,739	2,891,775	2,926,166	2,928,739
(Draw from) Deposit to fund balance; excess revenues (to cover revenue shortfall)	(34,391)	-	13,036	-	(34,391)	(36,964)

COMPASS BOARD AGENDA ITEM VI-D

Date: January 27, 2014



COMPASS
COMMUNITY PLANNING ASSOCIATION
of Southwest Idaho

Topic: Changes to the Federal Aid System (FAS) Functional Classification Map

Background/Summary:

This update was requested by the Idaho Transportation Department (ITD) in August 2013 to reflect changes to the FAS Functional Classification Map as a result of the 2010 Census. The completed changes along with the required forms must be into ITD by February 1, 2014.

The following entities responded to a request for changes:

- Idaho Transportation Department-District 3 (Table 1)
- City of Middleton (Table 2)
- City of Nampa (Table 3)
- Golden Gate Highway District No. 2 (GGHD2) (Table 4)
- Canyon Highway District No. 4 (CHD4) (Table 5)
- Ada County Highway District (ACHD) (Tables 7-8)

Nampa Highway District No. 1 (NHD1) and Notus Parma Highway District No. 3 (NPHD3) had no changes, nor did the City of Caldwell with the minor exceptions noted below in Table 7. The agencies were invited to a meeting on December 6, 2013. The cities of Caldwell, Nampa, Middleton (consultant), CHD4, and ACHD attended. ACHD invited Ada County cities to provide comments on the FAS Functional Classification Map but received none.

The proposed changes are broken out by agency in the attached tables. The changes were recommended for COMPASS Board approval by the Regional Technical Advisory Committee (RTAC) at its December 18, 2013 meeting.

Request/Recommendation:

Staff seeks COMPASS Board adoption of Resolution 05-2015 approving changes to the current 2015 FAS Functional Classification Map. These changes will result in a 2025 FAS Functional Classification Map.

Implication (policy and/or financial):

Roads for which federal aid will be sought must be shown on the FAS Functional Classification Map, which was last updated as part of the 2010 plan. Changes can be made later, and an annual cycle for changes is recommended to start in June 2015.

The FAS Functional Classification Map is used only to establish eligibility of a road for federal aid. Adding roads to the FAS Functional Classification Map does not increase the amount of available money. The Surface Transportation Funds are apportioned to Idaho under federal law and do not vary with the amount of roads in the FAS Functional Classification Map.

More Information:

- 1) Attachments – Recommended changes and Resolution 05-2014
- 2) For detailed information contact: Charles Trainor, Principal Planner, at 208-475-2243 or ctrainor@compassidaho.org.

CT:nb T:\FY14\600 Projects\661 Communities in Motion\6. Additional Data and Studies\Functio
Classification\Board jan 27 2014.docx

Attachment 1 – Recommended Changes by Agency

The 2025 FAS Functional Classification map is coordinated with the longer-term 2040 Planning Functional Classification map that was reviewed and approved by the COMPASS Board in January 2013. **The 2040 map is used for corridor preservation and access management—not the 2025 FAS map.**

- Principal arterial is the highest classification and is used for roads carrying significant volumes of traffic across longer distances. Generally, principal arterials will connect larger economic centers, major regional attractions (e.g., commercial airports), and other attractions such as universities. Dead-end or stub principal arterials should only occur if they end at some large center.
- Minor Arterials are less constrained, but still should emphasize connectivity between economic centers. Minor Arterials would connect with principal arterials.
- Collector roads are “bridges” between the local road system and arterials. Collector roads are the lowest functionally classified roads on the FAS system.

The 2015 FAS Functional Classification Map can be viewed at

http://compassidaho.org/documents/prodserv/maps/adacan2015_E.pdf

The approved 2040 Planning Functional Classification Map can be viewed at

http://compassidaho.org/documents/prodserv/CIM2040/adacan2040_official.pdf

Table 1-Idaho Transportation Department (All ITD roads are arterials)			
Road	Change/Issue	Arterial	Recommend
12th (SH 45)	Stub principal arterial from Greenhurst south.	Yes	Change to minor arterial past Greenhurst.
Alt connection to SH 16	This option, from Franklin to I-84, voided by the interchange design proposed in SH 16 Environmental Impact Statement.	Yes	Delete. Show SH 16 Environmental Impact Study design on 2025 map as principal arterial.
I-184 / Connector SH 16	Add various ramps to FAS map not now shown.	Yes	Add to be consistent with ITD map
SH 16	Alignment incorrect and no interchange locations shown.	Yes	Show SH 16 as per Environmental Impact Study preferred option.
SH 21	Stub principal arterial from Federal Way east to Warm Springs.	Yes	Change to minor arterial
Simplot (SH 19)	Stub principal arterial from Farmway west.	Yes	Change to minor arterial past Farmway.

Table 2-City of Middleton			
Road	Change/ Issue	Arterial	Recommend
4th	Add collector on existing from 9th to Willis. Not on 2040 map.	No	Add to 2025 and to 2040.
Cemetery Road*	Change from collector to minor arterial from SH 44 to Willis.	Yes	Change to minor arterial.
Duff*	Change from collector to minor arterial from SH 44 to Willis. Now collector on 2015 and 2040.	Yes	Change to minor arterial., also change on 2040 map.
Emmett Road*	Change from minor/collector to principal arterial from SH 44 to Willis.	Yes	Change to minor arterial.
Greenlinks	Add collector on existing from Main to SH 44. Not on 2040 map.	No	Add as collector to 2025 and to 2040 map.
Hartley*	Change from local to collector from SH 44 to Willis.	No	Change to Collector on 2025.

Table 2-City of Middleton

Road	Change/ Issue	Arterial	Recommend
Middleton*	Change to minor arterial from SH 44 to Triumph.	Yes	Change to minor arterial.
Triumph	Add collector from Dewey to Middleton Road.	No	Add as collector to 2025 and to 2040.
Willis*	Change from collector to minor arterial from Emmett Road to Cemetery. Now collector on 2015 and 2040 map.	Yes	Change to minor arterial, also change on 2040 map.

* Modified by Middleton after RTAC review to eliminate portions outside city.

Table 3-City of Nampa

Road	Change/Issue	Arterial	Recommend
Airport	Ada County Highway District (ACHD) requested adding Airport as principal arterial from Garrity to Ten Mile. Consistent with 2040 map.	Yes	Change to principal arterial. Needs approval by City of Nampa and Nampa Highway District No. 1 (NHD1).
Flamingo	Correct alignment to show Flamingo and Happy Valley intersection.	No	Change alignment to match.
Grays Lane	Return Grays Lane to collector. Is on 2040 map.	No	Add as collector.
Greenhurst	Recommend arterial designation for Greenhurst to McDermott, Greenhurst currently shown as collector. McDermott now shown as a minor arterial up to UPRR.	Yes	Show as a minor arterial. Needs approval by NHD1.
Happy Valley	Re-evaluate Happy Valley. Principal arterial. (Garrity to Locust).	Yes	Change to principal to Greenhurst, not past since creates stub. Needs approval by NHD1.
Iowa	Iowa should be minor arterial. 1/2 mile from Amity and Greenhurst, both principal arterials.	Yes	Show as minor arterial.
Midland	Missing segment Iowa to Lake Lowell.	Yes	Add as minor arterial.
Midland	Midland should be collector (Caldwell Boulevard to Karcher Road) Not in 2040 map.	No	Change - Needs to be added to change list for 2040.
Midland	Remove old alignment of Midland north and south of Karcher Bypass.	No	Change to local
Powerline	East Powerline was renamed to E. Victory Road.	No	Change
Roosevelt	Roosevelt should be minor arterial.	Yes	Change to minor arterial to 12 th Avenue (SH 45).
Smith	Re-evaluate Smith. Collector? Only minor arterial for 1 mile.	Yes	Change to collector.
Southside	Re-evaluate Southside Boulevard. Principal Arterial from Amity to Bowmont? Would create a dead-end Principal Arterial.	Yes	Change to Principal Arterial from Amity to Greenhurst. Needs approval by NHD1.
Star/Robinson	Re-evaluate Star/Robinson. Was minor arterial.	Yes	Change to minor arterial consistent with 2040. Needs approval by NHD1.
Sunnyridge	Sunnyridge should be collector. Locust to Lewis.	No	Change

Table 4-Golden Gate Highway District No. 2

Road	Change/Issue	Arterial	Recommend
Allendale Road	Red Top Road to Boise River Road. Add as collector.	No	Add to 2015 map.
Batt Corner Road	Ustick Road to Lower Pleasant Ridge Road. Add as collector.	No	Add to 2015 map.
Fargo Road	Red Top Road to Howe Road. Add as collector.	No	Add to 2015 map.

Table 5-Canyon Highway District No. 4

Road	Change/Issue	Arterial	Recommend
11th Avenue	Extend north 0.5 miles to Joplin Road as minor arterial.	Yes	Add as a minor arterial.
Can-Ada	Extend north 0.5 miles from US 20/26 to Joplin Road as major collector.	Yes	Add as a minor arterial.
Dean Lane	Convert to local road north of US 20/26.	No	Change to local.
Franklin Road	Extend north 0.5 miles as major collector from US 20/26 Joplin Road.	Yes	Add as a minor arterial.
Joplin	Add as minor arterial between Northside and Can-Ada Road.	Yes	Add as a minor arterial.
Knott Road	Convert to local road north of US 20/26.	No	Change to local.
Madison Road	Convert to local road north of US 20/26 and eliminate portion n/o Joplin Road.	No	Change to local.
Northside Boulevard	Extend north 0.5 miles as major collector from US 20/26 Joplin Road.	Yes	Add as a minor arterial.
Prescott Lane	Convert to local north of US 20/26.	No	Change to local.
Linden Road	Extend east 3.0 miles to Franklin Road as a minor arterial (existing road and r/w).	Yes	Show as a minor arterial.
No Name	Remove as proposed collector.	No	Remove from 2015 map.
No Name	Remove as proposed collector.	No	Remove from 2015 map.
Moss Lane	Remove as collector.	No	Remove from 2015 map.
Wagner Extension	Remove as collector.	No	Remove from 2015 map.
Middleton Road	Remove as collector north of Goodson Road.	No	Remove from 2015 map.
Blessinger Road	Extend south 0.57 miles through platted subdivision.	No	Extend as collector.
Knott Road Extension.	Remove as collector from map.	No	Remove from 2015 map.
Elm Road	Remove as collector from map.	No	Remove from 2015 map.
Lake Avenue	Remove as collector south of Roosevelt Avenue.	No	Remove from 2015 map.

Table 6 – City of Caldwell

Road	Change/Issue	Arterial	Recommend
Centennial/I-84	Centennial changes from principal to minor arterial midway across interchange.	Yes	Carry principal arterial designation to westbound on ramp.
10/Illinois/I-84	10 th /Illinois changes from principal to minor arterial midway across interchange.	Yes	Carry principal arterial designation to westbound on ramp.

Table 7-Arterial Changes-Ada County Highway District

Road	Change/Issue	Recommend
15th	Stub principal arterial from Myrtle south.	Show as minor arterial.
30th Street Extension	Not in correct alignment, new name, show as existing.	Change to actual alignment and name-Whitewater as existing minor arterial.
8th	Orphan principal arterial.	Change to minor arterial
9th	Stub principal arterial.	Change to minor arterial from Front north.
Airport	Shows as principal on 2040, not on 2015.	Add as principal arterial to 2025 from Garrity to Ten Mile. Affects road sections in Nampa and Nampa Highway District. Will need support requests.
Amity	On 2015 as collector from Eagle to Maple Grove. On 2040 as minor arterial.	Change to minor arterial.
Broadway	Stub principal arterial.	Change to minor arterial from Front north.
Capitol	Stub principal arterial.	Change to minor arterial from Front north.
Eisenman IC	Show Lake Hazel as principal arterial extended to Technology way to the off ramp from I-84.	Continuity fix – change to principal arterial.
Gowen IC	Show Gowen as principal arterial extended to Federal Way from the southbound off ramp at I-84.	Continuity fix – change to principal arterial.
Floating Feather	Alignment between SH 16 and Palmer.	Fix alignment.
Kuna Mora IC	Carry minor arterial designation to westbound on ramp.	Continuity fix – change to minor arterial.
Lake Hazel	Change to match 2040 alignment.	Fix alignment.
Lake Hazel	Would be a stub principal arterial unless it shows as existing connection to Cole.	Show connection to Cole as principal arterial.
Lake Hazel	Show this section as existing.	Fix alignment.
Main St in Meridian	Stub principal arterial from King to Pine. New split in place.	Change to minor arterial from King to Pine and add new split as principal arterial from King to Meridian Road.
Maple Grove Extension	Correct alignment and show as existing.	Change to existing and realign.
McDermott	Stub principal arterial.	Change to minor arterial from Lake Hazel south.
McDermott	Principal arterial in 2015 but new SH 16 will be principal.	Change to collector from US 20/26 to I-84.
Meridian Extension 1 to Kuna Mora	Stub principal arterial.	Change to minor arterial.
Meridian Extension 2 to Kuna Mora	Stub principal arterial.	Change to minor arterial.
New Meridian Road	Fix alignment and show as existing principal arterial.	Fix alignment and show as existing principal arterial.
Orchard	Connect to Lake Hazel.	Fix alignment.
Orchard	Connect to ramp as principal arterial.	Change to principal arterial.
President	Not shown in 2015 but is in 2040 as minor arterial.	Add to 2025 as minor arterial.
Ten Mile	Stub principal arterial.	Change to minor arterial from Lake Hazel south.
Ten Mile	Minor arterial from Chinden to Franklin.	Change to principal arterial.
Vista	Stub principal arterial.	Cut principal arterial at ramp.

Table 8-Proposed collectors dropped from 2015 & 2040 Map–ACHD

Road	Change/Issue	Recommend
36th, Adams Extension	Removed from Planning 2040 map.	Drop
44th St	Removed from Planning 2040 map from Chinden to Adams.	Drop
Arcaro	Removed from Planning 2040 map.	Drop
Eagle Road	Removed from Planning 2040 map from Beacon Light north.	Drop
Gander Dr	Removed from Planning 2040 map.	Drop
Hubbard/Eagle	Removed from Planning 2040 map from Steward west and from Columbia south.	Drop
Joplin by 3CRX	Dropped from 2040 map.	Drop
Larimer/Kent	Removed from Planning 2040 map.	Drop
Linder Extension N	Removed from Planning 2040 map from north of Homer Road.	Drop
Maple Grove	Removed from Planning 2040 map from s/o Lake Hazel.	Drop
New 31	Removed from Planning 2040 map from s/o Victory and e/o Maple Grove.	Drop
New 45	Removed from Planning 2040 map.	Drop
New 47	Removed from Planning 2040 map.	Drop
New 48 and 49	Removed from Planning 2040 map.	Drop
New 8	Removed from Planning 2040 map.	Drop
Reserve	Removed from Planning 2040 map from junction of Reserve/Table Rock to east.	Drop
S Channel Road	Removed from Planning 2040 map from Eagle Road east.	Drop
Tablerock	Removed from Planning 2040 map from junction of Reserve/Table Rock to east.	Drop
Trestlewood	Removed from Planning 2040 map from Five Mile also Five Mile Road s/o Lake Hazel.	Drop
W Chaparral	Removed from Planning 2040 map from county line to SH 16.	Drop
W Oakhampton	Removed from Planning 2040 map - e/o Eagle Road.	Drop

General

ACHD proposed that **all proposed unbuilt collectors be dropped from the FAS map.** The amount of federal funds is limited, and the likelihood of these collectors all being built is low. **Recommend.**

ACHD has also proposed that **all existing collectors now shown on the 2040 map be added to the FAS map.** **Recommend.**

Many collectors shown in the FAS map will be corrected to match the actual built alignments. Since this is an administrative action and not a policy action, no approval is needed.

T:\FY14\600 Projects\661 Communities in Motion\6. Additional Data and Studies\Functional Classification\Board jan 27 2014.docx



**RESOLUTION NO. 5-2014
FOR THE PURPOSE OF APPROVING AN AMENDMENT TO THE
FEDERAL AID FUNCTIONAL CLASSIFICATION MAP**

WHEREAS, the Community Planning Association of Southwest Idaho has been designated by the Governor of Idaho as the metropolitan planning organization responsible for transportation planning in Ada and Canyon Counties to address requirements under the Moving Ahead for Progress in the 21st Century authorization act and related federal rules under 23 CFR 450 and 49 CFR 613; and

WHEREAS, these federal laws and regulations require establishment of a federal aid functional classification system to guide investment of funding and to implement regional transportation plans; and

WHEREAS, functional classification is the process by which streets and highways are grouped into classes according to the character of service they are intended to provide; and

WHEREAS, a review of the system has revealed the need for changes to the functional classification of various roads in Ada and Canyon Counties due to growth and the desire to make certain corridors eligible for federal assistance to provide for that growth; and

WHEREAS, the various agencies with jurisdiction over said portions of these roads have requested and/or concurred with the proposed changes.

NOW, THEREFORE, BE IT RESOLVED, that the Community Planning Association of Southwest Idaho Board of Directors hereby requests the Idaho Transportation Department to make changes to the 2015 Federal Aid System Functional Classification Map as detailed in the attached tables leading to the creation of a 2025 Federal Aid System Functional Classification Map;

BE IT FURTHER RESOLVED, that the Community Planning Association of Southwest Idaho Board of Directors authorizes the submittal of this amended system to the appropriate state and federal agencies for their consideration.

Dated this 27th day of January 2014.

APPROVED:

By: _____
**Charlie Rountree, Chair
Community Planning Association of
Southwest Idaho Board of Directors**

ATTEST:

By: _____
**Matthew J. Stoll, Executive Director
Community Planning Association of
Southwest Idaho Board of Directors**

700 N. East 2nd Street,

Suite 200

Meridian, ID 83642

P. 208.855.2558

F. 208.855.2559

www.compassidaho.org

COMPASS BOARD AGENDA ITEM VI-E

DATE: January 27, 2013



Topic: Amend the FY2014-2018 Regional Transportation Improvement Program (TIP)

Background/Summary:

Due to various circumstances, COMPASS staff requests changes to the FY2014-2018 TIP:

- COMPASS and ITD currently use project grouping to aid in project delivery. Project grouping was a contributing factor in making the FY2013 End-of-Year program less transparent than if projects were all shown individually. Therefore, the COMPASS Executive Committee recommended Board approval to revoke the grouping process in the COMPASS region to improve transparency in the transportation programming process.
- After reviews of the transit program, Valley Regional Transit requested additional changes to transit projects to carry over projects that were not obligated in FY2013.
- The FY2014-2018 TIP includes \$1 million in FY2015 for "Treasure Valley High Capacity Corridor Alternatives Analysis," described as: "Study to identify and analyze options to improve mobility in a priority corridor to be determined in the long-range transportation plan. The study will evaluate all reasonable transit alternatives."
 - After reviewing a recommendation by the Regional Technical Advisory Committee, the COMPASS Executive Committee recommended "that the FY2015 study funds be reprogrammed from FY2015 to FY2018 for a corridor study, and the FY2018 project identified by ACHD for maintenance be moved to FY2015. Moving forward, COMPASS recognizes that it has to look at state legislative action in FY2014 and FY2015 to determine how those funds may be programmed in years after that."

Request/Recommendation:

Staff seeks COMPASS Board adoption of Resolution 06-2013, amending the FY2014-2018 TIP. The COMPASS Executive Committee recommended Board approval to ungroup projects in the region on November 19, 2013 and the funding swap on December 17, 2013. The Regional Technical Advisory Committee recommended approval to ungroup projects in the region and the transit carry over on December 18, 2013.

Implication (policy and/or financial):

The proposed changes cannot be made to the TIP for obligation without COMPASS Board approval.

More Information:

- 1) Attachment – Resolution 06-2013
- 2) For detailed information contact: Toni Tisdale, Principal Planner, at 475-2238 or ttisdale@compassidaho.org.

TT:nb T:\FY14\600 Projects\685 TIP\FY1418 TIP\140127mmoBDamend3.docx

RESOLUTION No. 06-2014
FOR THE PURPOSE OF AMENDING THE FY2014-2018 REGIONAL
TRANSPORTATION IMPROVEMENT PROGRAM



WHEREAS, the Community Planning Association of Southwest Idaho (COMPASS) has been designated by the Governor of Idaho as the Metropolitan Planning Organization responsible for transportation planning in Ada and Canyon Counties; and

WHEREAS, the Moving Ahead for Progress in the 21st Century (MAP-21) Act, Title 23 United States Code Section 134, and Title 49 United States Code Section 5303 requires Metropolitan Planning Organizations to develop and approve a Transportation Improvement Program; and

WHEREAS, MAP-21, Title 23 United States Code Section 134, and Title 49 United States Code Section 5303 require projects contained in the Transportation Improvement Program to be financially constrained; and

WHEREAS, the 1990 Clean Air Act Amendments requires all transportation plans and programs in nonattainment or maintenance areas demonstrate conformity to applicable state implementation plans for air quality improvement; and

WHEREAS, no additional review for air quality conformity is necessary for these projects; and

WHEREAS, MAP-21, Title 23 United States Code Section 134, and Title 49 United States Code Section 5303 requires Transportation Improvement Programs be developed and amended in consultation with all interested parties; and

WHEREAS, a public comment period is not necessary for these changes; and

WHEREAS, the Community Planning Association of Southwest Idaho desires to take timely action to ensure the availability of federal funds; and

WHEREAS, the Community Planning Association of Southwest Idaho developed this amendment to the FY2014-2018 Regional Transportation Improvement Program in compliance with all applicable state and federal regulations; and

WHEREAS, the attached table dated November 19, 2013, details the amendment to the FY2014-2018 Regional Transportation Improvement Program.

NOW, THEREFORE, BE IT RESOLVED, that the Community Planning Association of Southwest Idaho Board of Directors approves the amendment to the FY2014-2018 Regional Transportation Improvement Program.

DATED this 27th day of January 2014.

APPROVED:

By: _____
Charlie Rountree, Chair
Community Planning Association
of Southwest Idaho Board of Directors

ATTEST:

By: _____
Matthew J. Stoll, Executive Director
Community Planning Association
of Southwest Idaho

Amendment #3
 FY2014-2018 Regional Transportation Improvement Program
 Per COMPASS Executive Committee, November 19, 2013

Key No	Project	Previous	New
13055	10 th Avenue Bridge, Caldwell	Grouped	Not Grouped
13905	10 th Avenue ITS and Overlay, Caldwell	Grouped	Not Grouped
12050	ACHD Overlays, Arterials and Collectors – FY2014	Grouped	Not Grouped
12059	ACHD Rideshare, Ada County – FY2014	Grouped	Not Grouped
12370	ACHD Rideshare, Ada County – FY2015 and FY2016	Grouped	Not Grouped
13477	ACHD Rideshare, Ada County – FY2017	Grouped	Not Grouped
13899	ACHD Rideshare, Ada County – FY2018	Grouped	Not Grouped
TMA30	ACHD Rideshare, Ada County - PD	Grouped	Not Grouped
11586	ACHD Rideshare, Canyon County – FY2014	Grouped	Not Grouped
12375	ACHD Rideshare, Canyon County – FY2015	Grouped	Not Grouped
12376	ACHD Rideshare, Canyon County – FY2016	Grouped	Not Grouped
13051	ACHD Rideshare, Canyon County – FY2017	Grouped	Not Grouped
13483	ACHD Rideshare, Canyon County – FY2018	Grouped	Not Grouped
13904	ACHD Rideshare, Canyon County – PD	Grouped	Not Grouped
13499	ADA Ramp Improvements, Nampa	Grouped	Not Grouped
13901	Adaptive Signals, Boise Town Square Mall, ACHD	Grouped	Not Grouped
13027	Allendale Road Railroad Crossing, Canyon County	Grouped	Not Grouped
13040	Bergeson Street Crosswalk, SR2S, ACHD	Grouped	Not Grouped
13485	Biking Walking Path Extension and Pedestrian Signal, Caldwell	Grouped	Not Grouped
12898	Bowmont Road, Lynwood to SH-45, Nampa	Grouped	Not Grouped
12363	Capital Maintenance, ACHD – FY2015	Grouped	Not Grouped
13907	Capital Maintenance, ACHD – FY2016	Grouped	Not Grouped
13479	Capital Maintenance, ACHD – FY2017	Grouped	Not Grouped
12369	Capital Maintenance, ACHD – FY2018	Grouped	Not Grouped
13903	Capital Maintenance, ACHD – PD	Grouped	Not Grouped
13042	Carrie Rex Avenue Sidewalk, SR2S, Melba	Grouped	Not Grouped
13484	Centennial Way Roundabout, Caldwell	Grouped	Not Grouped
13043	City of Nampa, SR2S	Grouped	Not Grouped
13486	Colorado Avenue and Holly Street Signal and Pedestrian Improvements, Nampa	Grouped	Not Grouped
13047	Communities in Motion Update, COMPASS	Grouped	Not Grouped
12372	COMPASS Planning – FY2014	Grouped	Not Grouped
12373	COMPASS Planning – FY2015 and FY2016	Grouped	Not Grouped
12374	COMPASS Planning – FY2014	Grouped	Not Grouped
13478	COMPASS Planning – FY2014	Grouped	Not Grouped
13900	COMPASS Planning – FY2014	Grouped	Not Grouped
13464	District 3 Paving Striping – FY2017	Grouped	Not Grouped
13456	District 3 Ramp Pavement Improvements – FY2015	Grouped	Not Grouped
13054	Farmway Road and SH-44 Rehabilitation, Canyon county	Grouped	Not Grouped
13046	High Capacity Corridor Alternatives Analysis	Grouped	Not Grouped
13488	Homedale Road Intersection Improvements, Caldwell	Grouped	Not Grouped
13938	I-84, Blacks Creek to Mayfield Slope Flattening, Ada County	Grouped	Not Grouped
13035	I-84, Bridge Repair, Boise	Grouped	Not Grouped
13934	I-84, Garrity Road Eastbound On-Ramp, Nampa	Grouped	Not Grouped
12029	I-84, Gowen Railroad Bridge Eastbound, Boise	Grouped	Not Grouped
12379	I-84, Gowen Railroad Bridge Westbound, Boise	Grouped	Not Grouped
13057	I-84, Meridian Interchange to Five Mile Road	Grouped	Not Grouped
12343	I-84, Pavement Striping – FY2015	Grouped	Not Grouped
13936	I-84, Various Ramp Improvements	Grouped	Not Grouped
13931	I-84B (Nampa/Caldwell Boulevard), Canyon Street to Grant Avenue, Nampa	Grouped	Not Grouped
13954	I-84B, ADA Ramp Improvements, Nampa	Grouped	Not Grouped
13933	I-84B, Nampa Library Block, Nampa	Grouped	Not Grouped
13489	Intersection Improvements, Canyon Highway District	Grouped	Not Grouped
13502	Intersection Middleton Road and Flamingo Avenue, Nampa	Grouped	Not Grouped
12886	Junction US 20/26 UPRR Overpass, Canyon County	Grouped	Not Grouped

Key No	Project	Previous	New
12380	Metropolitan Planning – FY2014	Grouped	Not Grouped
12381	Metropolitan Planning – FY2015	Grouped	Not Grouped
13495	Metropolitan Planning – FY2016	Grouped	Not Grouped
13496	Metropolitan Planning – FY2017	Grouped	Not Grouped
13963	Metropolitan Planning – FY2018	Grouped	Not Grouped
13465	Micro Seals, I-84B, Canyon County – FY2015	Grouped	Not Grouped
13466	Micro Seals, SH-55 (Eagle Road), I-84 to SH-44 – FY2015	Grouped	Not Grouped
13487	Middleton Road and Ustick Roundabout, Caldwell	Grouped	Not Grouped
13028	Peckham Road Railroad Crossing, Canyon County	Grouped	Not Grouped
13964	Peckham Road, US-95 to Notus Road, Canyon County	Grouped	Not Grouped
CL140	Set Aside for STP-TMA Cost Increases – FY2014	Grouped	Not Grouped
CL150	Set Aside for STP-TMA Cost Increases – FY2014	Grouped	Not Grouped
13467	SH-16, Junction SH-44 to Emmett	Grouped	Not Grouped
13937	SH-19, Simplot Gate 6 to Blaine Street, Caldwell	Grouped	Not Grouped
12354	SH-21, High Bridge to Robie Creek	Grouped	Not Grouped
13463	SH-44, Junction I-84 to Star	Grouped	Not Grouped
13923	SH-44, State Street to Junction SH-55 (Eagle Road)	Grouped	Not Grouped
13030	SH-45, Deer Flat to I-84B	Grouped	Not Grouped
13473	SH-55 (Eagle Road), I-84 to Franklin Road	Grouped	Not Grouped
13476	SH-55, Intersection at SH-55 (Eagle Road) and SH-44, Ada County	Grouped	Not Grouped
12046	SH-55, Intersection Karcher Road and Middleton Road, Nampa	Grouped	Not Grouped
13033	SH-55, Karcher Road and Nampa/Caldwell Boulevard, Canyon County	Grouped	Not Grouped
13491	Signal Timing Improvements, ACHD	Grouped	Not Grouped
12360	South Orchard Access Road, Railroad Crossing, Ada County	Grouped	Not Grouped
13023	State Highways, Pavement Striping – FY2016	Grouped	Not Grouped
13048	Travel Survey and Transit On-Board Data Collection, COMPASS	Grouped	Not Grouped
13928	US 20/26, Branstetter Street to Junction I-184, Boise	Grouped	Not Grouped
13941	US 20/26, Intersections of Meridian Road and Locust Grove Road, Meridian	Grouped	Not Grouped
13927	US 20/26, Locust Grove Road to Cloverdale Road, Meridian	Grouped	Not Grouped
13921	US 20/26, Smeed Parkway to Middleton Road, Caldwell	Grouped	Not Grouped

Per Valley Regional Transit, December 9, 2013

Key No	Project	Scheduled Costs (including Match) (costs in \$1,000)							
		Phase	2014	2015	2016	2017	2018	PD	SUM
13828	Transit – Capital Purchase and Maintenance, Boise – FY2013	PE							0
		PC							0
	Funding Source: FTA 5310 Large Urban Project is a “purchase of service” hosted by Treasure Valley Transit and administration to provide rides for seniors and persons with disabilities in the Meridian and Eagle areas who are unable to access transportation through <u>other means</u> . volunteer driver programs or limited senior center transportation services. (Federal = \$210,000) Carry over project from FY2013 to FY2014 and adjust the description.	RW							0
		UT							0
		CE							0
		CN	0						0
			275						275
		Sum	0	0	0	0	0	0	0

Key No	Project	Scheduled Costs (including Match) (costs in \$1,000)							
		Phase	2014	2015	2016	2017	2018	PD	SUM
13832	Transit – Capital, Purchase of Service, Nampa – FY2013	PE							0
		PC							0
	Funding Source: FTA 5310 Small Urban Provides additional service for persons with disabilities in Nampa, Caldwell, and Middleton through a “purchase of service” agreement hosted by Treasure Valley Transit and administration. (federal = \$147,000) Carry over project from FY2013 to FY2014.	RW							0
		UT							0
		CE							0
		CN	0 194						0 194
		Sum	0 194	0	0	0	0	0	0 194

Per COMPASS Executive Committee, December 17, 2013

Key No	Project	Scheduled Costs (including Match) (costs in \$1,000)							
		Phase	2014	2015	2016	2017	2018	PD	SUM
13046	High Capacity Corridor Alternatives Analysis	PE							0
		PC		1000 0			0 1000		1000
	Funding Source: STP-TMA Study to identify and analyze options to improve mobility in a priority corridor to be determined in the long-range transportation plan. The study will evaluate all reasonable transit alternatives. <u>This project will be re-evaluated after the 2014 and 2015 state legislative sessions.</u> Delay project from FY2015 to FY2018. Funds will swap between KN 12363 and KN 12369. Add language to the description.	RW							0
		UT							0
		CE							0
		CN							
		Sum	0	1000 0	0	0	0 1000	0	1000

Key No	Project	Scheduled Costs (including Match) (costs in \$1,000)							
		Phase	2014	2015	2016	2017	2018	PD	SUM
12363	Capital Maintenance, ACHD - FY2015	PE	15						15
		PC	370						370
	Funding Source: STP-TMA Supplement the local maintenance program. Increase CE and CN by \$1,000,000 from KN 12369 to swap with KN 13046.	RW							0
		UT							0
		CE		520 642					520 642
		CN		3739 4617					3739 4617
		Sum	385	4259 5259	0	0	0	0	4644 5644
12369	Capital Maintenance, ACHD - FY2018	PE			10				10
		PC			415				415
	Funding Source: STP-TMA Supplement the local maintenance program. Decrease CE and CN by \$1,000,000 from KN 12369 to swap with KN 13046.	RW							0
		UT							0
		CE					850 719		850 719
		CN					5645 4776		5645 4776
		Sum	0	0	425	0	6495 5495	0	6920 5920

T:\FY14\600 Projects\685 TIP\FY1418 TIP\Amendments\Amend3.doc

COMPASS BOARD AGENDA ITEM VII-B

Date: January 22, 2014



COMPASS
COMMUNITY PLANNING ASSOCIATION
of Southwest Idaho

Topic: Updated Funded/Unfunded Transportation Projects List for *Communities in Motion (CIM) 2040*

Background/Summary:

At its November 18, 2013, meeting, the COMPASS Board approved the funded/unfunded transportation projects for CIM 2040, including all transportation projects that use federal funds, local and state funded transportation projects on Interstate 84 and principal arterials, as well as unfunded needs on the prioritized transportation corridors and projects.

The attachment presents the updated lists of funded and unfunded project needs based on the latest information from member agencies (e.g., updated project termini and/or costs).

Request/Recommendation:

This is for information only. No action is needed.

Implication (policy and/or financial):

At its June 17, 2013, meeting, the COMPASS Board acted to focus federal funding on maintenance in CIM 2040. The attachment provides an update to the Board approved lists of funded projects and unfunded needs, should additional funds become available.

More Information:

- 1) Attachment 1 – Updated Funded/Unfunded Transportation Projects List
- 2) For detailed information contact: Liisa Itkonen, Principal Planner, 475-2241 or litkonen@compassidaho.org.

LI:nb T:\FY14\600 Projects\661 Communities in Motion\1. Team\Board\Board Memorandum UpdatedFundedUnfunded _Jan22_14.docx

**Attachment 1 – Updated Funded/Unfunded Transportation Projects List for
Communities in Motion (CIM) 2040**

**Table 6.2. Short-Term Funded (Budgeted) Regional Capital Projects for
FY2014–2018. These projects are listed in priority corridor order,^{*†‡}
followed by the rest in alphabetical order.**

CIM 2040 Priority Corridor	Project and Brief Description	Estimated Cost	Key Number §
1	I-84, Meridian Road Interchange to Five Mile Road – rebuild I-84	\$19,600,000 [#]	13057
1	I-84, Meridian Road Interchange, Meridian – redesign and rebuild interchange	\$38,830,000 [#]	10939
2	State Street and Collister Drive Intersection – reconstruct and widen to a seven-lane by three-lane intersection, including re-alignment of Collister Drive and construction of an access road for existing alignment and capacity needs	\$5,500,000	13481
3	US 20/26, Intersections of Meridian Road and Locust Grove Road, Meridian – add right turn lanes on eastbound side of US 20/26	\$1,410,000	H328
4	Intersection of State Highway 55 (Karcher Road) and Midway Road, Nampa – add traffic signal and other operational improvements	\$4,640,000	13025
4	State Highway 55 (Karcher Road), Intersection of Karcher Road and Indiana Avenue, Canyon County – add intersection improvements, including major widening	\$3,822,000	13475
4	State Highway 55 (Karcher Road), Intersection of Karcher Road and Lake Avenue, Canyon County – add safety improvements	\$4,310,000	12383
4	State Highway 55 (Karcher Road), Intersection of Karcher Road and Middleton Road, Nampa – add intersection improvements	\$5,697,000	12046
7	Franklin Road, Black Cat Road to Ten Mile Road – widen from two to five lanes with curb, gutter, sidewalks, and bike lanes. Includes intersection widening at Franklin Road and Black Cat Road.	\$11,336,000	12368
9	Ustick Road, Linder Road to Meridian Road – widen from two to five lanes with curb, gutter, sidewalks, and bike lanes	\$2,960,000	RD202-35
9	Ustick Road, Locust Grove to Leslie Way – widen from two to five lanes with curb, gutter, sidewalks and bike lanes	\$3,005,000	RD205-05
9	Ustick Road, Meridian Road to Locust Grove Road – widen from two to five lanes with curb, gutter, sidewalks, and bike lanes	\$5,415,000	RD202-37
22	Amity Road, Chestnut Street to Kings Corner – widen to four lanes with curb, gutter, and sidewalks	\$8,402,000	10541
32	Bowmont Road, Lynwood to State Highway 45, Nampa – re-align Bowmont Road from Lynwood to State Highway 45	\$5,121,000	12898

-	21st Avenue, Chicago Avenue to Cleveland Boulevard, Caldwell – widen from two to five lanes with curb, gutter, sidewalks, and bike lanes	\$2,727,000	13052
-	Cole Road, I-84 to Franklin Road – widen from three to five lanes with curb, gutter, sidewalks, and bike lanes	\$5,242,000 \$4,749,000	RD207-16
-	I-84, Broadway Avenue Interchange, Boise – redesign and rebuild interchange	\$44,000,000 [#]	09821
-	I-84, Broadway Interchange to Gowen Interchange, Boise – add third lane in each direction	\$3,000,000 [#]	13812
-	I-84, Gowen Railroad Bridge Eastbound, Boise – replace and widen the eastbound section of the railroad bridge	\$4,649,000 [#]	12029
-	I-84, Gowen Railroad Bridge Westbound, Boise – replace and widen the westbound section of the railroad bridge	\$4,403,000 [#]	12379
-	I-84, Gowen Road Interchange, Boise – redesign and rebuild interchange	\$32,324,000 [#]	09822
-	Intersection of State Highway 55 (Eagle Road) and State Highway 44, Ada County – add safety improvements	\$1,038,000	13476
-	Linder Road and Deer Flat Road Intersection, Kuna – add intersection improvements, including curb, gutter, sidewalks, and bike lanes	\$1,986,000	13492
-	McMillan Road, Locust Grove Road to Eagle Road, Meridian – widen from two to five lanes with curb, gutter, sidewalks, and bike lanes	\$2,300,000	RD2012-100
-	Middleton Road and Ustick Road Roundabout, Caldwell – build roundabout at the intersection	\$960,000	13487
-	Old Highway 30, Plymouth Street Bridge, Caldwell – replace one-lane bridge with a new two-lane structure	\$9,240,000	13494
-	State Highway 55 (Eagle Road), I-84 to River Valley, Meridian – add one lane each direction	\$11,156,000	13473 13349
-	State Highway 55, Intersection of Eagle Road and McMillan Road, Ada County – add intersection improvements	\$5,365,000	13058
-	South Cemetery Road, State Highway 44 to Willow Creek, Middleton – construct a new road linking State Highway 44 and Middleton Road by way of Sawtooth Lake Drive	\$3,342,000	12048
-	US 20/26, Broadway Bridge, Boise – rebuild the Broadway Bridge to six-lane section, to include pedestrian facilities	\$16,952,000	11588
	Total Budgeted Regional Capital Projects	\$268,239,000	

Comment [I1]: In 2013 FYWP

*Capital projects on I-84, principal arterials, and/or using federal funds.

[†]Costs are in current dollars and are not adjusted for inflation.

[‡]Projects are listed in priority corridor order for table-to-table comparison purposes only.

[§]The key number is the tracking number for each project, and can be used when looking for project details in other documents.

[#]Cost does not include required environmental approvals.

Table 6.3. Long-Term Funded Regional Capital Transportation Projects for FY2019–2040

CIM 2040 Priority Corridor	Project and Brief Description	Estimated Cost*	Key Number
2	State Highway 44, State Highway 16 (Emmett Highway) to Linder Road – widen from two to four lanes	\$22,100,000	TBD
2	State Street, State Highway 44 (Glenwood Street) to Pierce Park Lane – widen from five to seven lanes	\$1,170,000	RD2012-123
2	State Street, Pierce Park Lane to Collister Drive – widen from five to seven lanes	\$6,030,000	RD2012-124
2	State Street, Collister Drive to 36th Street – widen from five to seven lanes	\$9,090,000	RD2012-125
2	State Street, 36th Street to 27th Street – widen from five to seven lanes	\$4,550,000	RD2012-126
3	US 20/26, Locust Grove Road to Eagle Road – widen from two to four lanes	\$20,800,000	TBD
4	State Highway 55, Middleton Road to 10th Avenue to Midway Road – widen from two to four lanes	\$21,492,000	TBD
4	State Highway 55, Midway Road to Middleton Road – widen from two to four lanes	\$7,164,000	TBD
6	Linder Road, Overland Road to Franklin Road – widen from two to five lanes. Project costs do not include any work associated with the ITD construction of a new I-84 overpass.	\$3,150,000	RD2012-80
6	Linder Road, Franklin Road to Cherry Lane – widen from two to five lanes	\$2,490,000	RD2012-81
6	Linder Road, Cherry Lane to Ustick Road – widen from two to five lanes	\$5,970,000	RD2012-82
6	Linder Road, Ustick Road to McMillan Road – widen from two to five lanes	\$2,730,000	RD2012-83
6	Linder Road, McMillan Road to US 20/26 (Chinden Boulevard) – widen from three to five lanes (east side of the road only)	\$1,420,000	RD2012-84
6	Linder Road, US 20/26 (Chinden Boulevard) to State Highway 44 (State Street) – widen from two to seven lanes	\$20,660,000	RD2012-85
6	Linder Road, State Highway 44 (State Street) to Floating Feather Road – widen from two to five lanes	\$3,300,000	RD2012-86
6	Linder Road, Floating Feather Road to Beacon Light Road – widen from two to five lanes	\$4,020,000	RD2012-87

CIM 2040 Priority Corridor	Project and Brief Description	Estimated Cost*	Key Number
7	Franklin Road, McDermott Road to Black Cat Road – widen from two to five lanes	\$2,910,000	RD2012-59
7	Franklin Road, Black Cat Road to Ten Mile Road – widen from two to five lanes with curb, gutter, and sidewalks; all right-of-way will come from the south side of the roadway.	\$7,740,000	RD2012-60
7	Franklin Road, Ten Mile Road to Linder Road – widen roadway from two to five lanes with curb, gutter, sidewalks, and bike lanes	\$2,800,000	RD2012-61
9	Ustick Road, McDermott Road to Black Cat Road – widen from two to five lanes	\$3,060,000	RD2012-136
9	Ustick Road, Black Cat Road to Ten Mile Road – widen from two to five lanes	\$2,790,000	RD2012-137
9	Ustick Road, Ten Mile Road to Linder Road – widen from two to five lanes	\$2,770,000	RD2012-138
9	Ustick Road, Linder Road to Meridian Road – widen from two to five lanes	\$2,980,000	RD2012-139
9	Ustick Road, Meridian Road to Locust Grove Road – widen from two to five lanes with curb, gutter, sidewalks, and bike lanes. This project may be constructed concurrently with the Ustick/Meridian Road intersection.	\$2,490,000	RD2012-140
9	Ustick Road, Locust Grove Road to State Highway 55 (Eagle Road) – widen from two to five lanes with curb, gutter, sidewalks, and bike lanes. The Locust Grove intersection must be constructed before or concurrently with this project.	\$2,440,000	RD2012-141
22	Amity Road, Black Cat Road to Ten Mile Road – widen from two to five lanes	\$2,970,000	RD2012-5
22	Lake Hazel Road, Linder Road to State Highway 69 (Meridian Road) – widen from two to five lanes	\$3,040,000	RD2012-67
22	Lake Hazel Road, State Highway 69 (Meridian Road) to Locust Grove Road – widen from two to five lanes	\$4,620,000	RD2012-68
22	Lake Hazel Road, Locust Grove Road to Eagle Road – widen from two to five lanes	\$4,500,000	RD2012-69
22	Lake Hazel Road, Eagle Road to Cloverdale Road – widen from two to five lanes	\$2,830,000	RD2012-70
22	Lake Hazel Road, Cloverdale Road to Five Mile Road – widen from two to five lanes	\$3,000,000	RD2012-71

Comment [dm2]: Same as KN 12368 on short term list (with RD2012-59, above)

Comment [I3]: Complete

Comment [I4]: Same as RD202-35 in short-term list

Comment [I5]: Same as RD202-37 on short-term list

Comment [I6]: Same as RD205-05 on short-term list

CIM 2040 Priority Corridor	Project and Brief Description	Estimated Cost*	Key Number
22	Lake Hazel Road, Five Mile Road to Maple Grove Road – widen from two to five lanes	\$2,970,000	RD2012-72
22	Lake Hazel Road, Maple Grove Road to Cole Road – widen from two to five lanes; extend/construct five-lane roadway to Cole Road	\$2,590,000	RD2012-73
22	Lake Hazel Road, Cole Road to Orchard Ext-1 – construct new five-lane roadway	\$3,900,000	RD2012-74
22	Lake Hazel Road, Orchard Ext-1 to Pleasant Valley Road – construct new five-lane roadway	\$5,280,000	RD2012-75
22	Lake Hazel Road, Pleasant Valley Road to Eisenman Road – construct new five-lane roadway	\$23,870,000	RD2012-76
-	Cole Road, Overland Road to Franklin Road – widen from three to five lanes	\$4,110,000	RD2012-34
-	Eagle Road, Lake Hazel Road to Amity Road – widen from four lanes to five lanes	\$3,180,000	RD2012-36
-	Eagle Road, Amity Road to Victory Road – widen from two to five lanes	\$3,220,000	RD2012-37
-	Eagle Road, State Highway 44 to State Street Plaza Drive (in Eagle) – widen from three to five lanes	\$920,000	RD2012-38
-	Eisenman Road, Lake Hazel Road to I-84 Interchange – construct new five-lane roadway	\$810,000	RD2012-39
-	Fairview Avenue, Meridian Road to Locust Grove Road – widen from five to seven lanes	\$4,010,000	RD2012-46
-	Fairview Avenue, Locust Grove Road to State Highway 55 (Eagle Road) – widen from five to seven lanes	\$3,650,000	RD2012-47
-	Fairview Avenue, State Highway 55 (Eagle Road) to Cloverdale Road – widen from five to seven lanes	\$3,310,000	RD2012-48
-	Fairview Avenue, Cloverdale Road to Five Mile Road – widen from five to seven lanes	\$4,010,000	RD2012-49
-	Fairview Avenue, Five Mile Road to Maple Grove Road – widen from five to seven lanes	\$5,430,000	RD2012-50
-	Fairview Avenue, Maple Grove Road to Cole Road – widen from five to seven lanes	\$4,320,000	RD2012-51
-	Fairview Avenue, Cole Road to Curtis Road – widen from five to seven lanes	\$4,470,000	RD2012-52

Comment [I7]: Same as RD207-16

CIM 2040 Priority Corridor	Project and Brief Description	Estimated Cost*	Key Number
-	Glenwood Couplet, Cole Road to Goddard Road – construct new three-lane roadway; reconfigure Glenwood/Mountain View/Goddard intersection; and reconstruct Cole/Glenwood intersection	\$1,090,000	RD2012-62
-	<u>Orchard Extension, Gowen Road to Victory Road – construct new seven-lane roadway</u>	<u>\$2,860,000</u>	<u>RD2012-110</u>
-	Ten Mile Road, Lake Hazel Road to Amity Road – widen from two to five lanes	\$2,980,000	RD2012-128
-	Ten Mile Road, Amity Road to Victory Road – widen from two to five lanes	\$3,030,000	RD2012-129
-	Ten Mile Road, Victory Road to Overland Road – widen from two to five lanes	\$4,010,000	RD2012-130
	Total Funded Regional Capital Projects	<u>\$258,535,000</u>	

*Costs are in current dollars and are not adjusted for inflation.

Table 6.6. CIM 2040 Priority Corridors, Unfunded Needs to 2040

CIM 2040 Priority Corridor	Project and Brief Description	Estimated Cost *
1	I-84, Centennial Way Interchange to Franklin Boulevard Interchange – widen to six lanes; replace four overpasses and two canal bridges	\$115,500,000
2	State Highway 44 (State Street), Exit 25 to State Highway 16 (Emmett Highway) and Glenwood Street to downtown Boise Exit 25 to State Highway 16 – widen to four lanes and construct new roadway from Canyon Lane to Duff Lane in the city of Middleton (\$140,800,000) Glenwood Street to downtown Boise – transit capital, increased service frequency, pedestrian and bike facility improvements, additional transit amenities, and other related improvements (\$197,400,000)	\$338,200,000
3	US 20/26, Middleton Road to Locust Grove Road – widen to four lanes ¹	\$199,350,000
4	State Highway 55, Snake River to Middleton Road 10th Avenue – widen the highway and Snake River bridge to four lanes	\$74,300,000 \$53,000,000
5	Regional Park and Ride, near-term – upgrade four existing lots and build 11 new lots throughout Ada and Canyon Counties	\$10,125,000

Comment [I8]: Takes into account an existing 4-lane section

¹ The draft Environmental Assessment for US 20/26 (<http://itd.idaho.gov/projects/d3/US2026Corridor/>) includes the eventual widening of US 20/26 from State Highway 16 to Eagle Road from four to six lanes. This additional widening would add an estimated cost of \$25,400,000.

An additional local need overlapping the priority corridor has been identified. This project, construction of local frontage roads and slip ramps between Aviation Way and Midland Boulevard, is anticipated to cost \$135,800,000 and is not included in the above cost estimate. It is anticipated to be paid for by a developer.

CIM 2040 Priority Corridor	Project and Brief Description	Estimated Cost*
6	Linder Road, Lake Hazel Road to Franklin Road – widen to five lanes and construct new I-84 overpass	\$17,720,000
7	Franklin Road, Star Road to McDermott Road – widen to five lanes	\$4,400,000
8	Caldwell-Nampa Boulevard, Linden Street to Orchard Avenue – upgrade all 11 existing traffic signals and implement identified ITS projects	\$39,300,000
9	Ustick Road, Montana Avenue to Star Road – widen to five lanes with curb, gutter, sidewalks, and bike lanes	\$61,200,000
<u>9</u>	<u>Ustick Road, Star Road to McDermott Road – widen to five lanes with curb, gutter, sidewalks, and bike lanes</u>	<u>\$2,460,000</u>
10	Regional Park and Ride, medium-term – upgrade 16 existing lots and build nine new lots throughout Ada and Canyon Counties	\$11,700,000
11	valleyconnect, near-term capital expansion and operating – improve existing (2013) transit route frequencies and develop transit stations as appropriate to accommodate service changes. Total cost estimate is \$846,900,000. The unfunded portion is \$487,100,000, as shown.	\$487,100,000
12	Treasure Valley High-Capacity Corridor Study – conduct an environmental analysis to identify a locally preferred alternative. This is necessary to secure New Starts/Small Starts funding.	\$10,000,000
13	State Highway 45 reroute, city of Nampa – provide a more efficient route from State Highway 45 directly to I-84. This project will include changes to 2 nd and 3 rd Streets South, 11 th and 12 th Avenues South, 11 th Avenue North, 7 th Street South, Yale, and Northside Boulevard.	\$24,800,000

Comment [19]: Includes \$1,230,000 for Canyon County portion of construction costs, per CIP Table A-3

CIM 2040 Priority Corridor	Project and Brief Description	Estimated Cost*
14	<p>State Highway 16 (Emmett Highway)/McDermott Road, Kuna-Mora Road to Ada/Gem County line: McDermott Road, Kuna-Mora to I-84 – widen to four lanes with access control, construct new connection to Kuna-Mora Road, and new railroad overpass. Widen to five lanes from Lake Hazel Road to new I-84 interchange.</p> <p>State Highway 16 (Expressway), I-84 to State Highway 44 – construct new four-lane expressway with interchanges at I-84/Franklin Road, Ustick Road, US 20/26, and State Highway 44</p> <p>State Highway 16 (Highway), State Highway 44 to Ada/Gem County line – widen to four-lane limited-access highway with interchanges at Beacon Light Road and Chapparral Road</p>	\$525,000,000
15	Boise Downtown Circulator – add circulator service in downtown Boise to improve mobility among primary destinations	\$41,900,000
16	<p>valleyconnect, medium-term capital expansion and operating – expand upon valleyconnect near-term by adding approximately 20 new routes.</p> <p>Cost shown is the net change from the near-term to expand service in the medium-term.</p>	\$470,600,000
17	State Highway 55, State Highway 44 to Ada/Boise County line – widen to four lanes and construct three new interchanges	\$85,700,000
18	Middleton Road, State Highway 55 to Main Street – widen to five lanes with curb, gutter, sidewalks, and bike lanes, and reconstruct I-84 overpass and river crossing	\$85,300,000
19	Overland Road Multi-Model Corridor Study, Ten Mile Road to Vista Avenue – develop a multi-model plan to expand and evaluate other options	TBD

CIM 2040 Priority Corridor	Project and Brief Description	Estimated Cost*
20	City of Kuna North/South Railroad Crossing – construct railroad crossing in the city of Kuna, based on recommendations of the <i>Kuna Crossing Feasibility and Implementation Plan</i> , which is expected to be complete by the end of 2013. ² (Note: description and projected costs will be updated pending the outcome of the study.)	TBD
21	Cherry Lane/Fairview Avenue, Middleton Road to Black Cat Road – widen to five lanes with curb, gutter, sidewalks, and bike lanes	\$78,000,000
22	Lake Hazel Road, McDermott Road to Linder Road – widen to five lanes with curb, gutter, sidewalks, and bike lanes. Also see Greenhurst Road, priority 30.	\$9,300,000
	Amity Road, Southside Boulevard to Black Cat Road - widen to five lanes with curb, gutter, sidewalks, and possibly bike lanes	\$14,500,000
23	State Highway 55/Midland Boulevard bottleneck – add a southbound lane on Midland Boulevard from westbound ramp to overpass	\$900,000
24	State Highway 45, Bowmont Road to Greenhurst Road – widen to four lanes	\$64,200,200
25	Victory Road, Happy Valley Road to McDermott Road – widen to three lanes	\$8,500,000
26	US 20/26, City of Parma to I-84 Exit 26 – widen to four lanes and reconstruct Exit 26 to accommodate the additional lanes	\$78,800,000
27	Three Cities River Crossing, State Highway 44 to US 20/26 (Chinden Boulevard) – construct new four-lane river crossing	\$82,500,000
28	Star Road/Robinson Boulevard, Greenhurst Road to Ustick Road – widen to five lanes, including the I-84 overpass	\$40,300,000
29	CIM 2040 Transit, long-term capital expansion and operating – expands upon valleyconnect near- and medium-term by adding new service routes and improving frequencies of planned routes. Cost shown is the net change from the medium-term to the long-term.	\$295,100,000

² <http://www.achdidaho.org/Projects/PublicProject.aspx?ProjectID=261>

CIM 2040 Priority Corridor	Project and Brief Description	Estimated Cost*
30	Greenhurst Road, Middleton Road to McDermott Road – widen to five lanes, including curb, gutter, and sidewalk, and construct new five-lane extension and railroad overpass from Happy Valley Road to McDermott Road. Also see Lake Hazel Road, priority 22.	\$60,000,000
31	Happy Valley Road, Greenhurst Road to Stamm Lane – widen to five lanes, including curb, gutter, and sidewalk	\$46,100,000
32	Bowmont Road/Kuna-Mora Road Extension, Robinson Road to Eagle Road – rebuild existing road and construct extensions on approximately seven miles of this two-lane roadway. This project also includes two canal bridges and one railroad overpass.	\$63,000,000
33	Beacon Light Road to Purple Sage Extension – rebuild existing road and construct approximately five miles of a new two-lane roadway	\$38,000,000
	Unfunded Total Project Needs	<u>\$ 3,462,555,200</u>

*Costs are in current dollars and are not adjusted for inflation.

t:\fy14\600 projects\661 communities in motion\7. prepare plan\document\FundedUnfundedTables_Dec312013.docx

DECEMBER 2013 - STAFF ACTIVITY REPORT

PROGRAM NO.	
601	<p>UNIFIED PLANNING WORK PROGRAM DEVELOPMENT AND FEDERAL ASSURANCES</p> <p style="text-align: right;">MEGAN LARSEN</p> <ul style="list-style-type: none"> • Continued work on the FY 2014 UPWP Revision 1 • Processed and tracked revenues and expenditures associated with the FY2014 Unified Planning Work Program. • Tracked changes and announcements in the Federal Register and the Daily Digest. • Tracked announcements from funding resources to identify potential grants for COMPASS and member agencies.
605	<p>MULTI-MODAL PLANNING SUPPORT</p> <p style="text-align: right;">WALT SATTERFIELD</p> <ul style="list-style-type: none"> • Participated in weekly GoRide coordination meetings with Valley Regional Transit. • Developed transit route shapefiles and preliminary cost estimates for transit services in the City of Meridian and participated on the Meridian Transit Project Team's bi-monthly meeting (on December 6 and December 20). • Met with Valley Regional Transit to discuss the implementation of the Title VI alternative transportation survey for Ada and Canyon Counties on December 11, 2013. • Presented the prioritized list of transit projects to the Regional Coordination Council for approval on December 17, 2013. • Attended Boise Transit Planning team meeting on December 19, 2013.
620	<p>GROWTH AND TRANSPORTATION SYSTEM MONITORING</p> <p style="text-align: right;">CARL MILLER</p> <ul style="list-style-type: none"> • Continued tracking building permits and subdivisions for Development Monitoring Report. • Continued development of online dashboard for CIM 2040 performance measurement. • Continued geocoding of 2013 employment data. • Met with the Performance Measures workgroup to discuss the online dashboard.
647	<p>REGIONAL GROWTH ISSUES AND OPTIONS</p> <p style="text-align: right;">CARL MILLER</p> <ul style="list-style-type: none"> • Updated the Communities in Motion 2040 Development Tracking database. • Geocoded housing sales data and mapped results. • Reviewed local and national housing data and forecasts. • Completed cohort survival population forecasting for CIM 2045. • Continued development of the 2014 Performance Monitoring Report.

PROGRAM NO.	
653	<p data-bbox="380 163 967 197">COMMUNICATION AND EDUCATION</p> <p data-bbox="1344 201 1513 235" style="text-align: right;">AMY LUFT</p> <ul data-bbox="402 239 1546 835" style="list-style-type: none"> • Prepared the <i>Keeping Up With COMPASS</i> newsletter. • Updated the web site and posted to COMPASS Facebook page and Executive Director’s blog. • Tracked and facilitated issues related to COMPASS and transportation in and with news media. Distributed two news releases and coordinated one interview. • Presented and publicized 2013 Leadership in Motion awards. • Finalized and launched the redesigned COMPASS web site. • Continued preparations for the 2014 COMPASS education series. Speakers confirmed for January 23/24 and February 6/7, 2014. • Updated COMPASS Board notebooks. • Prepared information for the City of Nampa on federally funded projects. • Received Board approval of the <i>COMPASS FY2015-2018 Strategic Plan</i>. Posted the plan online and began the process of incorporating it into the FY2015 Unified Planning Work Program (UPWP). • Finalized text for updated COMPASS brochure; working with graphic artist on design.
661	<p data-bbox="380 835 828 869">COMMUNITIES IN MOTION</p> <p data-bbox="1256 873 1520 907" style="text-align: right;">LIISA ITKONEN</p> <ul data-bbox="402 911 1536 1543" style="list-style-type: none"> • Received the COMPASS Board approval of the CIM 2040 performance measures and targets. • Continued working with the editor to prepare chapters and corridor summaries. All chapters have been written and undergone initial review by editor. • Began preparations for a spring 2014 public comment period on the full draft CIM 2040 plan. • Completed applications and other preparations for the CIM 2040 Grant Implementation Program. • Presented CIM 2040 Performance Measures and Targets to the Public Participation Committee on December 5, 2013, for feedback on the dashboard and other reporting tools. • Presented CIM 2040 growth forecast and vision at the <i>Ada County Law Enforcement; Policing 2020</i> meeting on December 12, 2013. • Participated in an ITD Open House at Shadow Valley Golf Course for a study on the SH-55 Corridor to share information about <i>Communities in Motion</i> 2040 on December 17, 2013. Approximately 70 people attended. • Started researching reporting mechanisms for future projects.

PROGRAM NO.	
685	<p data-bbox="386 170 1308 197">REGIONAL TRANSPORTATION IMPROVEMENT PROGRAM</p> <p data-bbox="1279 205 1516 233" style="text-align: right;">TONI TISDALE</p> <ul data-bbox="402 239 1539 1360" style="list-style-type: none"> • Attended a webinar on advanced notice of proposed rulemaking for transit/transportation safety requirements on December 3, 2013. • Participated in a staff discussion regarding VRT's Community Link program with Valley Regional Transit, COMPASS, and Treasure Valley Transit staff on December 4, 2013. • Prepared for and hosted a scoring meeting with a subcommittee of the Regional Coordination Council to prioritize regional transit projects on December 5, 2013. • Prepared for and hosted the TMA Balancing meetings on December 5, 2013. • Discussed the Statewide Transportation Alternatives Program and FTA 5310 funding process with ITD staff on December 6, 2013. • Prepared for and hosted a scoring meeting with a subcommittee of the Regional Technical Advisory Committee to prioritize Transportation Alternatives Program applications in the Boise Urbanized Area on December 6, 2013. • Met with Valley Regional Transit staff to balance transit programs on December 9, 2013. • Participated in a teleconference with Valley Regional Transit and Federal Transit Administration staff regarding specific programmatic questions on December 13, 2013. • Provided a historical funding analysis for the COMPASS Executive Committee on December 17, 2013. • Received a recommendation from the Regional Coordination Council regarding the transit priorities on December 17, 2013. • Participated in conference call with Valley Regional Transit and WITCO staff regarding funding needs of WITCO on December 18, 2013. • Participated in the ITD Public Transportation "Live Newsletter" (conference call) on December 18, 2013. • Analyzed and provided COMPASS signature to regional applications for the Statewide Transportation Alternatives Program application process on December 20, 2013.
692	<p data-bbox="386 1373 1325 1400">REGIONAL ASSET and RESOURCE MAINTENANCE REPORT</p> <p data-bbox="1279 1409 1503 1436" style="text-align: right;">DON MATSON</p> <ul data-bbox="402 1442 1451 1507" style="list-style-type: none"> • Continued monitoring of asset management and other maintenance reports.
693	<p data-bbox="386 1520 984 1547">GRANT RESEARCH AND ASSISTANCE</p> <p data-bbox="1289 1556 1513 1583" style="text-align: right;">DON MATSON</p> <ul data-bbox="402 1589 1533 1793" style="list-style-type: none"> • Monitored potential grant resources. • Met with Central District Health and Idaho Smart Growth regarding an upcoming Health Impact Assessment call for proposals. • Met with Idaho Transportation Department, Federal Highway Administration, Boise State University and Treasure Valley Food Coalition to discuss proposals for farm-to-market/freight studies.

PROGRAM NO.	
701	<p>GENERAL MEMBERSHIP SERVICES</p> <p style="text-align: right;">CHARLES TRAINOR</p> <ul style="list-style-type: none"> • Continued work on updating the 2015 federal aid map. • Hosted the American Planning Association webinar <i>Fiscal Impact Analysis as a Decision Support Tool</i> on December 4, 2013, for member agencies and COMPASS staff. • Met with the Performance Measures workgroup to discuss the revisions to the Development Review Protocol and creating a CIM 2040 development checklist. • Reviewed Solterra development proposal and provided comments to the City of Meridian. • Met with Canyon County and ITD staff regarding the possibility of starting the CARS4 system in Canyon County on December 10, 2013.
702	<p>AIR QUALITY OUTREACH</p> <p style="text-align: right;">AMY LUFT</p> <ul style="list-style-type: none"> • Selected consultant to produce and place air quality public service announcements. • Reviewed existing public service announcements with Idaho Department of Environmental Quality and the Air Quality Board representatives. • Continued work on a media kit for the Idaho Department of Environmental Quality and the Air Quality Board.
703	<p>GENERAL PUBLIC SERVICES</p> <p style="text-align: right;">CHARLES TRAINOR</p> <ul style="list-style-type: none"> • Provided information to the public on demographics, development, funding, and traffic issues.
705	<p>TRANSPORTATION LIAISON SERVICES</p> <p style="text-align: right;">MATT STOLL</p> <ul style="list-style-type: none"> • Participated in the Caldwell Chamber of Commerce Transportation Committee meeting on December 2, 2013. • Attended the Meridian Transportation Commission meeting on December 2, 2013. • Attended the Idaho Transportation Board meeting on December 11, 2013. • Met with ITD and ACHD management to resolve FY2013 End of Year funding issue on December 2, 2013. • Met with City of Nampa staff and consultant to review SH-45 realignment concept plan on December 4, 2013. • Met with Boise City Councilmember Clegg on December 18, 2013 to review various issue and coordinate efforts. • Met with Nampa Highway District Commissioner Millar on December 9, 2013 to coordinate on issues and activities in his role as COMPASS Board Chair. • Began developing a set of "quick facts" talking points for use by COMPASS Board members and staff.
710	<p>COMPLETE STREETS</p> <p style="text-align: right;">CARL MILLER</p> <ul style="list-style-type: none"> • Presented the Complete Streets Level of Service model and maps to the COMPASS Board on December 16, 2013. • Provided Complete Streets Level of Service analysis for Transportation Alternatives Program.
720	<p>STATE STREET TRANSIT CORRIDOR IMPLEMENTATION</p> <p style="text-align: right;">DON MATSON</p> <ul style="list-style-type: none"> • No significant activity during December.

PROGRAM NO.	
760	<p>LEGISLATIVE SERVICES</p> <p style="text-align: right;">MATT STOLL</p> <ul style="list-style-type: none"> • Participated in relevant activities in support of Board legislative position statements. • Tracked and reported significant activity in federal and state transportation-related legislative issues. • Continued reviewing Moving Ahead for Progress in the 21st Century Act (MAP-21) to determine implications to COMPASS and its membership.
761	<p>BLUE PRINT FOR GOOD GROWTH</p> <p style="text-align: right;">CHARLES TRAINOR</p> <ul style="list-style-type: none"> • No significant activity.
801	<p>STAFF DEVELOPMENT</p> <p style="text-align: right;">MEGAN LARSEN</p> <ul style="list-style-type: none"> • Attended American Planning Association’s webinar, Fiscal Impact Analysis as a Decision Support Tool, on December 4, 2013. • Attended U.S. Census Bureau webinar, The Recent Decline in Employment Dynamics, on December 18, 2013. • Attended training on PERSI’s new reporting system on December 17, 2013. • Participated in HUD/DOT location affordability portal demonstration webinar on December 20, 2013.
820	<p>COMMITTEE SUPPORT</p> <p style="text-align: right;">MEGAN LARSEN</p> <ul style="list-style-type: none"> • Provided staff support to the COMPASS Board of Directors and standing committees.
836	<p>REGIONAL TRAVEL DEMAND MODEL</p> <p style="text-align: right;">MARYANN WALDINGER</p> <ul style="list-style-type: none"> • Continued to provide travel demand forecast information for various projects. • Provided one area of influence model run for a proposed development. • Continued to update inputs for the regional travel demand model update.
842	<p>CONGESTION MANAGEMENT SYSTEM</p> <p style="text-align: right;">MARYANN WALDINGER</p> <ul style="list-style-type: none"> • Completed edits to the draft <i>Treasure Valley Operations Systems: Operations Management, and ITS</i> plan.
860	<p>GEOGRAPHIC INFORMATION SYSTEM MAINTENANCE</p> <p style="text-align: right;">ERIC ADOLFSON</p> <ul style="list-style-type: none"> • Maintained various regional geographic data layers. • Created map documents for member agencies and the public. • Orthophotography maintenance: Sold 1 section of topographic data and 18 sections of 2013 data to members. • Provided technical support for a variety of COMPASS processes.
862	<p>REGIONAL DATA CENTER</p> <p style="text-align: right;">ERIC ADOLFSON</p> <ul style="list-style-type: none"> • Released Request for Bid to the potential consultants that responded to the RFI request. Selection of the consultant will be made the third week of January. Consultant will be tasked with creating an installation plan for the Regional Data Center.

PROGRAM NO.	
991	<p data-bbox="381 163 836 199">SUPPORT SERVICES LABOR</p> <p data-bbox="1258 199 1518 235" style="text-align: right;">MEGAN LARSEN</p> <ul data-bbox="397 235 1534 510" style="list-style-type: none"> • Oversaw general accounting, administration and personnel. • Continued implementation of new accounting software. • Completed annual financial audit and presented to Finance Committee in December 2013. • Completed work on revised personnel policies, which were adopted by Board in December, 2013. • Worked on proposed revisions to agency administrative and financial policies.

T:\FY14\900 Operations\990 Direct Operations Maint\Board\2014 Staff Activity Report\December 2013.doc



COMPASS BOARD AGENDA ITEM VIII-B

Date: JANUARY 27, 2014

Topic: Status Report – Current Air Quality Efforts

Background/Summary:

The information below provides an update on Treasure Valley air quality.

November Air Quality Monitoring:

The Idaho Department of Environmental Quality reported nine days in the Treasure Valley with air quality levels in the moderate category during the month of November 2013.

- Five of the moderate days were attributable to fine particulate matter (PM_{2.5}) recorded in Canyon County.
- Two of the moderate days were attributable to fine particulate matter (PM_{2.5}) recorded in both counties.
- One of the moderate days was attributable to fine particulate matter (PM_{2.5}) recorded in Ada County.
- One of the moderate days was attributable to coarse particulate matter (PM₁₀) and fine particulate matter (PM_{2.5}) recorded in Canyon County.

YEAR TO DATE SUMMARY

The table below summarizes the number of good, moderate and above moderate days recorded since January 1, 2005.

	Good	Moderate	Unhealthy to Hazardous	Total
2005	298	65	2	365
2006	273	91	1	365
2007	227	125	12	364
2008	266	99	1	366
2009	277	83	5	365
2010	321	44	0	365
2011	260	99	6	365
2012	283	72	11	366
2013	276	81	8	365

Notes: 2008 was a Leap Year hence the extra day. In 2007, one day of data is missing for the month of May.

Request/Recommendation:

Information only.

Implication (policy and/or financial):

None.

More Information:

- 1) For detailed information contact: MaryAnn Waldinger, Principal Planner, at 475-2242 or mwaldinger@compassidaho.org

COMPASS BOARD AGENDA ITEM VIII-C

Date: January 27, 2014



Topic: Status Report – Current Transportation Project Information

Background/Summary:

The information in Attachment 1 provides a monthly update on transportation trends, issues, and current project status. A running total of transit ridership is provided in Attachment 2.

Request/Recommendation:

For information only.

Implication (policy and/or financial):

There are no policy or financial implications.

More Information:

- 1) Attachment 1 – Status Report – Current Transportation Project Information
- 2) Attachment 2 – Yearly Alternative Transportation Trip Report
- 3) For detailed information contact: Toni Tisdale, Principal Planner, at 475-2238 or ttisdale@compassidaho.org.

TT:nb T:\FY14\600 Projects\685 TIP\Monthly-Status\140127mmoBdStatus.docx

Status Report – Current Transportation Project Information

Following is the most recent monthly reported statistics compared to the same month a year ago:

STATUS OF PUBLIC TRANSPORTATION PROJECTS

Boise Air Terminal	Nov 2013	Nov 2012*	% Change
Monthly Air Passengers (Inbound and Outbound)	207,659	219,413	-5.36%
Monthly Air Freight (Inbound and Outbound) (tons)	3,633	3,507	3.59%
Public Transportation Monthly Ridership	Nov 2013	Nov 2012*	% Change
ACHD VanPool (Active Routes)	105	100	5.00%
ACHD VanPool (Trips)	21,018	22,207	-5.35%
Valley Regional Transit Boise Urbanized Area Services	104,531	110,719	-5.59%
Valley Regional Transit Nampa Urbanized Area Services	14,329	19,687	-27.22%
Total	139,878	152,613	-8.34%
Other Public Transportation Reporting Average Hourly Ridership	Nov 2013	Nov 2012*	% Change
Valley Regional Transit Boise Urbanized Area Services	19.4	20.2	-3.96%
Valley Regional Transit Nampa Urbanized Area Services	19.6	21.5	-8.84%

*There is a possibility that previously reported statistics do not match those in this report due to data finalization.

STATUS OF MAJOR PROJECTS

Information as of early January 2014.

Project	Sponsor	Comments*
21 st Avenue, Chicago Avenue to Cleveland Boulevard, Caldwell (KN 13052)	Caldwell	This project will widen 21 st Avenue from Chicago Avenue to Cleveland Boulevard from a two-lane to five-lane arterial. Work will include sidewalks, traffic signals, and railroad crossings. The concept plan is approved, and the project is now in the final design phase. Construction is expected in FY2016.
ADA Ramp Improvements, Nampa (KN 13499)	Nampa	This project will install ADA pedestrian ramps at several locations within the City of Nampa. Construction is scheduled for FY2014.
Alternatives Analysis for Downtown Boise Circulator System, Phase 1 (KN 13343)	Boise	This Discretionary FTA 5309 project will conduct the first phases of an alternatives analysis study for a downtown Boise circulator system. The project consultant was given Notice to Proceed, and the project kickoff meeting was held on September 24, 2013. A steering committee of stakeholders is formed and a charette will be conducted with the committee on December 19, 2013. A draft technical memorandum addressing the purpose and need and the goals and objectives for this project is anticipated by the end of December 2013. The project is programmed for FY2014.
Amity Avenue, Nampa (KN 10541)	Nampa	This project is a Congressional earmark to widen Amity Avenue in the City of Nampa. Right-of-way acquisition is nearly complete. Construction is tentatively scheduled to begin in March 2014.
Biking Walking Path Extension and Pedestrian signal, Caldwell (KN 13485)	Caldwell	This project provides an extension of the existing biking, walking path from the YMCA south adjacent to the Heritage Charter School and then crosses Ustick Road with a high-intensity activated crosswalk signal. The project is scheduled for design in FY2014 and construction in PD.

Project	Sponsor	Comments*
Bergeson Street Crosswalk, SR2S, ACHD (KN 13040)	ACHD	This Safe Routes to School project will install rectangular rapid flashing beacon on Bergeson Street at the entrance to Liberty Elementary School in Boise. Design is 99% complete with delivery expected in April 2014. Construction is scheduled for FY2014.
Bogus Basin Road Improvements, ACHD (KN 3789(1))	ACHD	This Federal Lands Access Program project will make improvements on Bogus Basin Road. Design and Construction is scheduled for FY2014.
Boise Bike Share Program, Phase I, VRT	VRT	Project will implement a bike share program in downtown Boise, Phase I will include seven stations throughout the downtown area with 70 bicycles. The Request for Proposals for bicycles, stations, and supporting software and hardware, was released on November 15, 2013. The final proposals are due December 27, 2013. Selection should occur by mid-January 2014. Staff is working with property owners to get permission to place stations on property (private or public). Efforts are underway to shift some FTA 5307 funds to allow the entire project to be rolled out with the initiation of the project. The project is expected to be implemented by summer 2014.
Bowmont Road, Lynwood to SH-45, Nampa (KN 12898)	Nampa Highway District	Realign Bowmont Road from Lynwood to SH-45. The Nampa Highway District is currently acquiring right-of-way. The right-of-way certificate and final design are expected by December 31, 2013. The plans, specifications, and engineers estimate is expected to be delivered by March 31, 2014. The project is scheduled for construction in FY2016, but could advance if funding becomes available.
Capital Maintenance, ACHD – FY2015 (KN 12363)	ACHD	This project will supplement the local maintenance program. The design consultant is selected. The design state/local agreement was presented to ACHD in December 2013. Construction is scheduled in FY2015.
Capital Maintenance, ACHD – FY2016 (KN 13907)	ACHD	This project will supplement the local maintenance program. Design is scheduled for FY2014 with construction scheduled in FY2016.
Centennial Way Roundabout, Caldwell (KN 13484)	Caldwell	This project will orchestrate an angled intersection of SH-19/Simplot Boulevard, I-84 Business (in two separate legs of a couplet Cleveland Boulevard and Blaine Street) and Simplot Boulevard (a six-leg intersection) into a potential roundabout. The project is scheduled for design in FY2014 and construction in PD.
City of Caldwell SR2S – FY2014 (14340)	VRT	This will fund a Safe Routes to Schools director and coordinator to work with elementary and middle schools in the Caldwell School District, as well as children who participate in the YMCA Child Development programs. These funds are a pass-through to the Treasure Valley YMCA, and will cover one year of funding for the director and coordinator positions and related materials. Funds are available in FY2014.
City of Nampa, SR2S (KN 13043)	Nampa	This Safe Routes to School project will construct a multi-use trail between East Iowa Avenue and East Sherman Avenue to accommodate students attending Sherman Elementary School. Construction is scheduled for FY2014.
City of Nampa SR2S – FY2014 and FY2015 (14339)	Nampa	This will fund a Safe Routes to Schools coordinator to work with elementary and middle schools throughout the City of Nampa. This program implements educational and encouragement activities at schools and community-wide events. These funds will cover two years of funding a part-time position and related materials. Funds are available in FY2014 and FY2015.
Colorado Avenue and Holly Street Signal and Pedestrian Improvements, Nampa (KN 13486)	Nampa	This project will install traffic signals and pedestrian-friendly improvements at the intersection of Colorado Avenue and Holly Street in Nampa. Design is currently underway. Construction is scheduled in Preliminary Development.
Deer Flat Regional Bicycle/Pedestrian Plan, Canyon County (KN 2013(2))	Canyon Highway District	This Federal Land Access Program project will develop a bicycle/pedestrian plan in the Deer Flat Refuge near Lake Lowell in Canyon County. The project kick-off meeting occurred on December 17, 2013. Match agreements are in place with FHWA. The project is scheduled for FY2014.
Dry Creek Trail, Phase 1, Eagle	Eagle	Project provides a bicycle and pedestrian underpass at SH-44 on the west side of the City of Eagle. It will connect the Dry Creek Pathway and the northeast side of the city of Eagle with the Eagle Island Pathway system. Design is scheduled for FY2014 with construction scheduled in FY2016.

Project	Sponsor	Comments*
Federal Aid Arterials and Collectors – FY2013 (KN 11581)	ACHD	This project will supplement the local overlay program. Design is almost complete. Construction is underway with completion expected by June 4, 2014.
Federal Aid Arterials and Collectors – FY2014 (KN 12050)	ACHD	This project will supplement the local overlay program. Design is underway. The plans, specifications, and engineer's estimate package is expected by May 1, 2014. Construction is expected to begin in summer 2014.
Five Mile Road, Franklin Road to Fairview Avenue (KN 11582)	ACHD	This project will widen Five Mile Road between Franklin Road and Fairview Avenue to five lanes with shoulder, sidewalk, and railroad crossing improvements. Construction is expected to begin in January 2014 with an estimated completion date in October 2014.
Franklin Road, Black Cat Road to Ten Mile Road (KN 12368)	ACHD	This project will widen Franklin Road from two lanes to five lanes from Black Cat Road to Ten Mile Road. Work includes curb, gutter, sidewalks, bicycle facilities, bio-infiltration swales, and reconstructing the intersection at Franklin Road and Black Cat Road. Design is 90% complete with delivery expected by March 2015. Construction is programmed for FY2016.
Garden City West Bridge Pathway Crossing – FY2012 (KN 13512)	Garden City	This multi-jurisdictional project will help fund construction of a 12-foot wide, 180-foot long bicycle-pedestrian bridge across the Boise River between Glenwood Street, Eagle Road, State Street, and Chinden Boulevard, connecting over 30 miles of non-motorized pathways. The environmental evaluation is awaiting approval of the Cultural Report, which is expected in January 2014. The project engineer anticipates design completion in February 2014. Work continues on securing a construction access agreement. Construction is scheduled for FY2014.
Greenbelt Extension, Orchard Street, Kuna (14342)	Kuna	This project will provide pedestrian and bicycle facilities on the west side of Orchard Street from Avalon south to the Kuna Greenbelt. Work will include curb, gutter, and sidewalk on the north half up to the end of pavement. The southern portion will include a paved six-foot asphalt pathway. Design is scheduled in FY2014 with construction in FY2015.
Greenbelt, Garden City to Americana Boulevard (KN 13514)	Boise	This project will construct a 12-foot wide paved pathway to fill a 4,100 linear foot gap in the Greenbelt system on the south side of the river between Main Street and Americana Boulevard with connection to Ann Morrison Park. Concept design is 75% complete. The City received approval to proceed with wetland delineations and will soon obtain archeological approval. The remaining environmental documents are continuing. The appraisals are on hold until the environmental work is complete. The pathway alignment is complete. Construction is scheduled in Preliminary Development.
Greenbelt Maintenance, Americana To Fairview, Boise (KN 13915)	Boise	Project is for a one-half mile section of the Greenbelt between Americana Boulevard and Fairview Avenue on the north side of the Boise River. The project will remove existing asphalt and base to sub-grade, install base and compact, widen to 12-foot pathway, and form and pour new concrete pathway. Design is underway with construction in FY2015.
Greenbelt Maintenance, Fairview Avenue toward Veteran's Park, Boise (KN 13919)	Boise	Project is a one-half mile section on the Greenbelt from Fairview Avenue toward Veteran's Park on the north side of the river. Project will rebuild the pathway down to the base layer with a new concrete pathway. Design is underway with construction split over FY2016 and FY2017.
Greenbelt Resurfacing, Pioneer Pathway Southwest of River Street, Boise (KN 13914)	Boise	Project will remove existing asphalt and base to sub-grade, install new base, widen to 12-foot pathway. Form and pour concrete pathway (near Bronco Elite). Project is 325-linear feet. Design is underway and construction is scheduled for FY2014.
Greenbelt, Eckert Road Underpass, Boise (KN 13913)	Boise	Construction of a Class I bicycle and pedestrian concrete underpass at Eckert Road on the north side of the Boise River. The project will allow bicyclists and pedestrians on the Greenbelt to cross Eckert Road separately from vehicles. Design is underway with construction in Preliminary Development.
Homedale Road Intersection Improvements, Caldwell (13488)	Caldwell	This project will provide intersection safety improvements on Homedale Road at the following locations: Montana Road, Lake Road, Florida Avenue, and Midway Road. Construction is scheduled for FY2014.

Project	Sponsor	Comments*
High Accident Warning Signs, Canyon Highway District (KN)	Canyon Highway District	Install horizontal curve signage in multiple locations throughout Canyon Highway District to increase safety related to lane departures. The state/local agreement was approved by Canyon Highway District on December 4, 2013. Construction is scheduled in FY2015.
I-84, Broadway Avenue to Gowen Road Mainline Widening (KN 13812) AND I-84, Gowen Interchange Reconstruction, Boise (KN 09822)	ITD	This GARVEE project will add a third lane to I-84 between the ramps of Broadway Avenue and Gowen Road Interchanges. The companion project is also a GARVEE project will replace the existing interchange at Exit 57 in Boise with a new traditional interchange. The plans, specifications, and engineer's estimate was submitted November 14, 2013. The project is currently being advertised. Bids will open January 7, 2014.
I-84, Broadway Avenue Interchange Reconstruction, Boise (KN 09821) AND I-84, Gowen Railroad Bridge Eastbound Lane(KN 12029) AND Westbound Lane (12379), Boise	ITD	This project is a GARVEE project to replace the existing interchange at Exit 54 in Boise with a new Single Point Urban Interchange (SPUI). The companion projects will replace the existing railroad bridges in east Boise near the Broadway interchange. Bids opened on December 31, 2013, and work is expected to begin in spring 2014.
I-84, Meridian Interchange Reconstruction, Meridian (KN 10939) AND I-84, Meridian Interchange to Five Mile Road (KN 13057)	ITD	This GARVEE project will replace the existing interchange at Exit 44 in Meridian with a new Single Point Urban Interchange (SPUI). The project will also add the fourth lane to I-84 in this area. Right-of-way acquisition is underway. The final design review meeting was held August 14, 2013. The companion project will reconstruct the pavement on the outside travel lanes and shoulder in both directions on I-84 between the Meridian Interchange and the Flying Wye. Final design was completed November 20, 2013, and the project team is incorporating the comments. The project will be advertised by January 28, 2014, with expected bid opening on February 18, 2014. Construction is expected to take 18 months.
I-84, Ten Mile Creek Bridge to Meridian Interchange (KN 13845)	ITD	This project was split out of the Meridian Interchange rebuild project to widen the Ten Mile Creek structures under Meridian Road and I-84 during the fall/winter months to reduce possible delays on Meridian Road Interchange construction. Idaho Power began moving power lines and poles for utility work on Meridian Road. The city of Meridian will install a sewer line on the west side of Meridian Road from Overland Road north to Ten Mile Creek. Work began on December 23, 2013, and is expected to complete in early spring 2014.
I-84, UPRR East Lateral Canal Bridge, Nampa (KN 12866) AND I-84, Northside Boulevard Underpass, Nampa (KN 12867)	ITD	These are bridge rehabilitation projects in Nampa that were companioned under one contract. Bids were opened September 24, 2013. The projects are expected to begin construction in spring 2014.
Intersection Improvements, Canyon Highway District (KN 13489)	Canyon Highway District	Safety Improvements at intersections in Canyon Highway District. Intersections include: Lake Avenue and Orchard Avenue, Middleton Road and Linden Road, Homedale Road and 10th Avenue, Midway Avenue and Lonestar Road, Homedale Road and Indiana Avenue. The environmental and concept charter was submitted to LHTAC on November 25, 2013. Construction is scheduled for FY2014.
Intersection Middleton Road and Flamingo Avenue, Nampa (KN 13502)	Nampa	This project will add a traffic signal at the intersection of Middleton Road and Flamingo Avenue in Nampa. Construction is scheduled for FY2015.
Natures Wood Duck Island Trail Restoration, Ada County	Ada County	This project will make permanent repairs to a portion of the Boise River Greenbelt within the Bethine Church River Trail area. The state/local agreement is complete. The county engineer is preparing preliminary engineering documents. Construction is expected in FY2014.
Middleton Road and Ustick Roundabout, Caldwell (KN 13487)	Caldwell	This project will improve a four-way stop at the Middleton Road and Ustick Road intersection by building a roundabout to help traffic flow and reduce congestion. The project is scheduled for design in FY2014 and construction in PD.
Pedestrian Signal, South Midland Boulevard, Nampa (14344)	Nampa	This project will place a HAWK pedestrian-activated signal at the Wilson Pathway where it crosses Midland Boulevard. Pedestrian pre-warning signals and thermo crosswalk markings will also be installed to improve safety concerns at the intersection. Design is scheduled in FY2014 with construction in FY2015.

Project	Sponsor	Comments*
Riverside Road and Lake Shore Drive, Rehabilitation, Canyon County (KN 2013(1))	Canyon Highway District	This Federal Land Access Program project will rehabilitate Riverside Road and Lake Shore Drive near Lake Lowell in Canyon County. The match agreement with FHWA is in place. Construction is scheduled in FY2015.
SH-16, Boise River Bridge and North Stage (KN 12915)	ITD	This is a GARVEE project to construct the piece of the project just south of SH-44, including the Boise River bridge to just south of the Boise River. This is a new alignment, so traffic impacts will be minimal. In December 2013, the contractor started removing temporary canal and irrigation crossing initially installed to facilitate construction. With the exception of these features, installation of the median barrier and final clean up, this project is almost complete. Bridge work was finished December 20, 2013, and the overall project is expected to be complete in August 2014.
SH-16, Intersection SH-44, US 20/26 and Local Roads (KN 12916)	ITD	This is a GARVEE project to construct the intersection of SH-16 and US 20/26 and SH-16 and SH-44. This project will also construct the local roads in the project needed to provide new access. Traffic was shifted into a winter shutdown configuration at the new SH-16 and SH-44 intersection. This configuration is essentially the final configuration; however, the southbound traffic movement is blocked. With intersection work at SH-16 and SH-44 nearly completed, and traffic placed in an almost final configuration, the contractor started work on US 20/26 and SH-16 intersection. Work on the SH-16/SH-44 intersection was supposed to be completed in fall 2013; however, due to utility conflicts, the work was delayed. With the exception of top-lift paving and establishing the final striping configuration, work is expected to be complete in spring 2014. The entire SH-16 project is expected to be complete in August 2014.
SH-16, Phyllis Canal Bridge and South Stage (KN 12917)	ITD	This project is substantially complete. Crews still need to restripe, install concrete guardrail, and reseed in spring 2014.
SH-19, Corridor Study	ITD	This is a Corridor Management Plan covering 16.1 miles of SH-19 in Canyon and Owyhee Counties. Public meetings were held in Caldwell and Homedale in mid-October 2009. The Environmental Scan was delivered in April 2013. The Draft Corridor Management Plan is expected to be delivered in April 2014.
SH-21, (Luck Peak) High Bridge to Robie Creek (KN 12354)	ITD	This is a 4.7-mile pavement rehabilitation project (partly in Ada County, but mostly in Boise County). Bids were opened September 10, 2013. Construction is expected to begin in June or July 2014 and finish in September or October 2014.
SH-44 Corridor Preservation (KN 07827)	ITD	This project is a feasibility, access management, construction phasing, and National Environmental Policy Act (NEPA) study only. The current preferred alternative is the existing SH-44 alignment, with the exception of the Middleton area, with is bypassed based on the City's approved comprehensive plan. The project was reduced in scope from an Environmental Impact Statement to an Environmental Assessment. ITD received additional comments from the State Historic Preservation Office regarding the Cultural Report. A new Wetlands Delineation Report was submitted to ITD on April 18, 2013. The Finding of No Significant Impact is anticipated in summer 2014.
SH-45 Corridor Plan	ITD	The Idaho 45 corridor plan will develop a 10-year plan to identify current and future highway needs on SH-45 on an 18-mile section of SH-45 beginning at SH-78 in Owyhee County and extending to the City of Nampa and the I-84 Business Loop. The Environmental Scan was delivered in April 2013. The draft Corridor Management Plan is expected to be delivered in FY2015.
SH-45, Deer Flat to I-84B, Nampa (KN 13030)	ITD	This is a 5.5-mile pavement rehabilitation project. ITD District 2 is working on the development of this project. The plans, specifications, and engineer's estimate was delivered in December 2013.
SH-55 (Eagle Road) and McMillan Road Intersection (KN 13058)	ACHD/ITD	This is a joint intersection improvement project between ACHD and ITD at Eagle Road and McMillan Road. The project will be sponsored, administered, designed, and bid by ACHD. ITD's participation is review and funding. The final design meeting was held August 20, 2013. Right-of-way acquisition is underway. The plans, specifications, and engineer's estimate package is expected in September 2014. Construction is anticipated to begin in FY2015.

Project	Sponsor	Comments*
SH-55 (Eagle Road), I-84 to Franklin Road Southbound, Meridian (KN 13473)	ITD	This project will widen SH-55 (Eagle Road) to add a third southbound lane from Franklin Road to I-84 and a dedicated right-turn lane to westbound I-84. The last remaining item needed is approval of the Interchange Modification Report addendum from the Federal Highway Administration. Project design is complete, but awaiting utility waivers. The plans, specifications, and engineer's estimate package is expected in January 2014, and the project will be built in FY2014.
SH-55, Intersection of Karcher Road and Middleton Road, Nampa (KN 12046)	ITD/ Nampa	This project will reconstruct the existing Karcher Road and Middleton Road intersection from just west of the Elijah Drain culvert to the vicinity of Sundance Street, including additional lanes, new traffic signals, improved drainage and on-street lighting. Right-of-way acquisition is ongoing. The Final design review meeting was held December 18, 2013. The final plans, specifications, and engineer's estimate were expected in February 2014.
SH-55, I-84 (Eagle Interchange) to Banks-Lowman Road Access Management Plan (Central Segment)	ITD	This is a Corridor Management Plan covering 33.7 miles of SH 55 in Ada and Boise Counties. The Traffic Impact Study of the proposed Northwest Foothills development was updated. The Environmental Scan is scheduled for completion in January 2014. An Ada County Open House was held on December 17, 2013. The Draft Corridor Management Plan is expected to be ready for internal review by the end of January 2014.
SH-69 Corridor Plan	ITD	The SH-69 corridor plan will develop a 10-year plan to identify current and future highway needs on SH-69 beginning at the City of Kuna and extending to the City of Meridian, and the interchange with I-84. The Environmental Scan is scheduled to start in September 2013 and be completed in February 2014. Completion of the plan is expected in FY2015.
Sidewalk, North Middleton Road, Middleton (KN 14343)	Middleton	This project will install sidewalks along North Middleton Road on the west side; from Triumph Drive south 225-feet to connect to sidewalks existing along Mountain View Subdivision across the street from Mill Creek Elementary School. The engineer completed a site walkthrough and adjoining landowners to discuss irrigation and draining issues. Preliminary Design is underway. Construction is scheduled in FY2015.
Signal Timing Improvements, ACHD (KN 13491)	ACHD	This project will make signal timing improvements for traffic safety at: Federal Way from Protest Road to Gowen Road; Franklin Road, Maple Grove Road to Eagle Road; Overland Road, Cloverdale Road to Overland Park; Overland Road, Meridian Road to Eagle Road. Design is expected to begin in January 2014 with delivery in June 2014. This is an FY2014 project.
Signal Timing Plan Update, ACHD (KN 13955)	ACHD	Update signal timing on six corridor sections to improve mobility and increase safety. Signal timing improvements will occur on sections of Park Center Boulevard, Orchard Road, Curtis Road, Federal Way, State Street, and Ustick Road. The project is scheduled for FY2015.
South Cemetery Road, SH-44 to Willow Creek, Middleton	Middleton	Project funds environmental study and preliminary and final designs for a new 0.284-mile roadway segment linking SH-44 and Middleton Road by way of Sawtooth Lake Drive in Middleton. Preliminary design is underway, and consultants are determining Willow Creek floodway via a field survey and flood maps. Construction is expected in FY2018.
State Street and Collister Drive Intersection, ACHD (KN 13481)	ACHD	This project will make geometric and operational improvements to the intersection at State Street and Collister Drive. Design is scheduled to begin in FY2014. Construction is scheduled for FY2017.
Storm Water Design Guide, ACHD (KN 13819)	ACHD	ACHD will hire environmental specialists to develop a guidebook with alternative storm water treatments for Ada County. Primary emphasis will be on treatments that could be used in pedestrian situations, as well as in medians. Treatments in the guidebook will be considered and used on ACHD's road and pedestrian projects in the future. Plan development will occur in FY2014.
Swan Falls Road Shoulder Widening, Kuna – FY2012 (KN 13518)	ACHD	This project will construct three miles of five-foot shoulders along Swan Falls Road from Poen Road to Initial Point to provide safe walking, bicycling and vehicle pull-offs with funds through the National Scenic Byways Program. Design is 15% complete with estimated delivery in September 2014. Construction is scheduled for FY2014.

Project	Sponsor	Comments*
Three Cities Intelligent Transportation System (KN 08821)	ACHD	ACHD in cooperation with FHWA, is designing operational improvements, such as closed circuit television cameras, speed detectors, and adaptive signal technology to SH-55 (Eagle Road), SH-44 (State Street), Glenwood Street, and US 20/26 (Chinden Boulevard). Design is 65% complete with estimated delivery in February 2014. Construction is expected to begin in early FY2014.
Transit – ADA Bus Stop Improvements (KN 12222)	VRT	This is a Stimulus project. The project will provide improvements to sidewalks near bus stops to comply with the Americans with Disabilities Act and improve mobility. Construction is complete at 370 bus stops in Ada County and 39 stops in Canyon County and approximately 50 shelters are installed. VRT awarded another 20 bus stops, with construction expected to be complete by September 2013 in Ada and Canyon Counties.
Transit – Associated Capital Improvements, Nampa – FY2013 (KN 12760)	Nampa	This project includes bicycle and pedestrian improvements at three locations near transit routes in Nampa. Construction is scheduled for FY2014.
Transit – Bicycle and Pedestrian Infrastructure, Nampa – FY2014 (KN 13711)	Nampa	This project will provide bicycle and pedestrian infrastructure to enlarge access and connectivity by connecting multiple neighborhoods in southeast and north Nampa to the downtown area and to one of the three transit transfer stations in Nampa. Construction is scheduled for FY2014.
US 20/26 Corridor Preservation (KN 07826)	ITD	This project is a feasibility, access management, construction phasing, and National Environmental Policy Act (NEPA) study only. The Access Management Plan was adopted by the COMPASS Board in December 2008. Traffic counts are updated and ITD staff is working to update other impacted documents as a result of the new traffic counts. A finding of no significant impact is anticipated in winter 2014.
US 20/26 Broadway Bridge, Boise (KN 11588)	ITD	A new bridge will be constructed to replace the existing structure on US 20/26 over the Boise River in downtown Boise, including reconstruction/widening of Broadway Avenue between Myrtle Street and University Avenue and rehabilitation of the existing pavement between Front Street and Myrtle Street. A Design Workshop is planned for August 2013. Environmental efforts are underway. A traffic analysis for the project, including impacts during construction is almost complete. The roadway, greenbelt, and drainage plans are being developed. The project is scheduled to deliver the plans, specifications, and engineering estimates by October 1, 2015, and be built in FY2015.
US 20/26, Oregon State Line to I-84, Corridor Study	ITD	This is a Corridor Management Plan covering 22.1 miles of US 20/26 in Canyon County. The Environmental Scan was completed in January 2013. Staff is entering right-of-way into the mapping system. The draft Corridor Management Plan is expected to be delivered in March 2014.
US-95 Access Management Plan (South Segment)	ITD	This is a Corridor Management Plan covering 50.8 miles of US-95 in Owyhee and Canyon Counties (south). The Environmental Scan is scheduled begin in August 2013 and be completed in February 2014. The draft Corridor Management Plan is expected to be delivered in June 2014.
US-95, Junction US 20/26 Union Pacific Railroad Overpass (KN 12886)	ITD	This is a bridge replacement project. Roadway and bridge design is underway. Railroad coordination is progressing. The project is scheduled to advance to the plans, specifications, and engineer's estimate stage on March 2014.
Ustick Road, Locust Grove to Leslie Way, Meridian (KN RD205-05)	ACHD	This project will widen the roadway from two lanes to five lanes with curb, gutter, sidewalks and bike lanes, per the 2009 CIP update and North Meridian Plan. The Locust Grove intersection must be constructed before or concurrently with this project. Design and right-of-way acquisition are complete. Construction is scheduled to begin January 6, 2014.

*Project updates were not received from the City of Nampa and Valley Regional Transit.

T:\FY14\600 Projects\685 TIP\Monthly-Status\1401.doc

CY2013	Jan	Feb	Mar	Apr	May	Jun	Jul	Aug	Sept	Oct	Nov	Dec	Total -Oct	To Date % Change 12-13
ACHD Vanpool (Trips)	24,820	22,491	23,554	24,362	23,031	21,357	22,832	23,272	22,087	23,366	21,018		252,190	-0.93%
VRT Boise Urbanized	105,668	118,669	112,729	117,867	111,770	91,450	99,098	94,982	102,585	119,175	104,531		1,178,524	0.33%
VRT Nampa Urbanized	18,265	19,685	19,112	21,111	18,199	15,513	15,816	18,003	21,988	21,029	14,329		203,050	2.59%

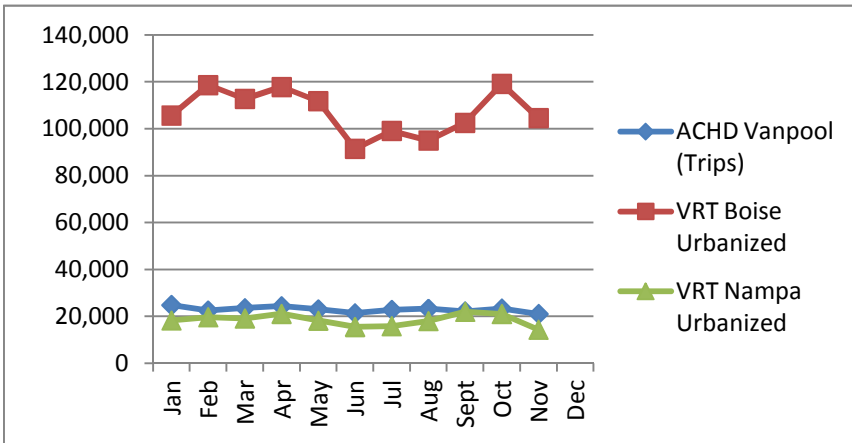
CY2012	Jan	Feb	Mar	Apr	May	Jun	Jul	Aug	Sept	Oct	Nov	Dec	Total - Nov	To Date % Change 11-12
ACHD Vanpool (Trips)	23,327	22,989	23,821	23,245	24,007	22,096	22,500	24,676	21,216	24,475	22,207	20,247	254,559	9.82%
VRT Boise Urbanized	96,100	119,064	106,068	118,989	116,421	92,998	94,139	102,614	105,805	111,715	110,719	102,009	1,174,632	-1.80%
VRT Nampa Urbanized	18,511	16,167	18,379	19,645	14,427	15,501	15,068	17,117	20,330	23,101	19,687	16,368	197,933	3.47%

CY2011	Jan	Feb	Mar	Apr	May	Jun	Jul	Aug	Sept	Oct	Nov	Dec	Total - Nov	To Date % Change 10-11
ACHD Vanpool (Trips)	20,243	22,046	22,121	20,936	20,169	21,510	19,336	23,097	20,347	19,749	22,240	20,832	231,794	19.96%
VRT Boise Urbanized	101,936	101,144	117,704	108,108	111,366	106,275	93,834	115,761	114,726	114,484	110,885	103,464	1,196,223	17.42%
VRT Nampa Urbanized	15,364	16,508	18,362	17,393	16,347	13,325	15,186	19,370	20,998	20,215	18,235	15,202	191,303	3.74%

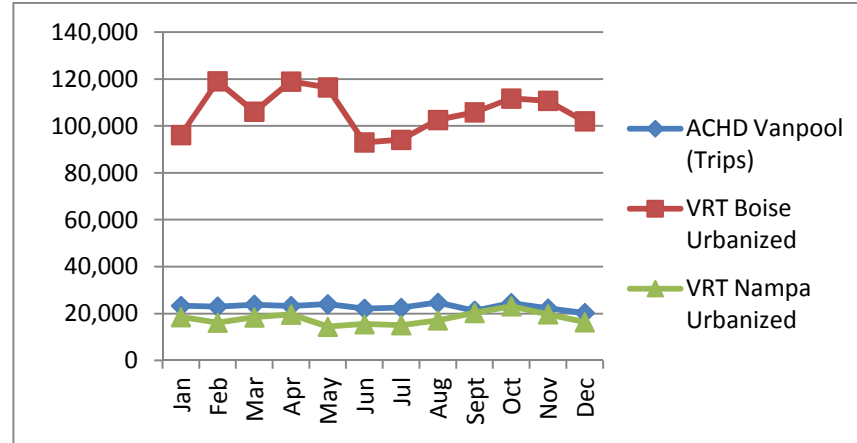
CY2010	Jan	Feb	Mar	Apr	May	Jun	Jul	Aug	Sept	Oct	Nov	Dec	Total - Nov	To Date % Change 09-10
ACHD Vanpool (Trips)	20,065	18,942	22,466	20,626	17,675	20,417	18,630	19,046	18,790	18,596	18,036	19,160	193,224	0.60%
VRT Boise Urbanized	103,704	106,299	120,174	114,145	99,610	97,152	91,474	95,262	98,048	103,166	93,466	94,292	1,018,796	0.47%
VRT Nampa Urbanized	15,466	17,515	18,362	21,100	16,136	17,265	16,151	18,143	20,607	23,260	15,866	13,973	184,405	6.04%

CY2009	Jan	Feb	Mar	Apr	May	Jun	Jul	Aug	Sept	Oct	Nov	Dec	Total -Nov	To Date % Change 08-09
ACHD Vanpool (Trips)	21,341	19,323	21,325	21,244	17,327	19,693	18,704	17,213	19,449	19,977	17,808	19,387	192,063	-16.65%
VRT Boise Urbanized	104,815	105,104	107,494	115,431	100,891	98,370	95,048	87,730	102,043	103,486	98,446	102,061	1,014,043	-3.64%
VRT Nampa Urbanized	15,591	16,796	17,555	18,710	15,410	15,862	16,021	17,117	19,857	19,823	16,751	15,707	173,902	-10.09%

2013



2012



DEMOGRAPHIC ADVISORY COMMITTEE

ITEM VIII-D

Attendance List of Members

Member Agency/Name	Jan '13 No Mtg	Feb '13	Mar '13 No Mtg	Apr '13 No Mtg	May '13 No Mtg	June '13 No Mtg	July '13	Aug '13 No Mtg	Sept '13 No Mtg	Oct '13 No Mtg	Nov '13	Dec '13 No Mtg	TOTAL
ACCHD/K. Knapp													
ACHD/ C. Little/J. Lowe		1									1		
Ada County/B.Danielson		1					1				1		
BSU/M. Fragkias													
CCDC/Vacant													
Canyon Co. Dev. Services /J. Almeida/D. Root/P. Nilsson													
City of Boise/ J. Tomlinson/B. Eggleston		1					1				1		
City of Caldwell/B. Billingsley		1					1				1		
City of Eagle/ N. Baird Spencer		1					1				1		
City of Garden City/J. Thornborrow													
City of Kuna/W. Howell		1					1				1		
City of Meridian/ B. McClure		1					1				1		
City of Middleton/ D. Taylor													
City of Nampa/ N. Holm							1						
City of Star/ N. Mitchell													
IDEQ/ D. Luft													
ITD / M. Wasdahl		1									1		
Public Participation Committee/J. Ross											1		
Valley Regional Transit/ Vacant													
Ex officio Members													
Chamber of Commerce - Ada County/M.Tate		1											
Chamber of Commerce- Canyon Co./T. Kasper													
COMPASS/C. Miller		1					1				1		
Development Community - Ada County/C.Findlay													
Major Utilities / B. Snow/B. Defenbach		1					1						
Development Community - Canyon County/Vacant													

REGIONAL TECHNICAL ADVISORY COMMITTEE

Attendance List of Members

<u>Member Agency/Name</u>	Jan '13	Feb '13	Mar '13 No Mtg	Apr '13	May '13	June '13	July '13	Aug '13	Sept '13 No Mtg	Oct '13	Nov '13	Dec '13	TOTAL
General Members													
ACHD/S. Anderson/R. Head	1	1		1	1	1	1	1		1	1	1	10
Ada County /R. Beck/M. Leatherman	1	1		1	1	1	1	1		1	1	1	10
BSU/N. Nimmmons	1					1	1			1	1		5
Canyon County / J. Almeida, D. Root, P. Nilsson							1			1		1	3
Canyon Highway District #4/C. Hopper	1	1		1	1	1	1	1			1	1	9
City of Boise/ D. Fluke/ K. Lacey/K. Gallagher	1	1			1	1	1	1		1	1		8
City of Caldwell/R. MacDonald		1		1			1			1	1	1	6
City of Eagle/N. Baird Spencer	1	1		1	1		1	1		1	1	1	9
City of Garden City/J. Thornborrow													0
City of Kuna/W. Howell	1	1		1	1	1	1	1			1	1	9
City of Meridian/J. Lucas	1	1		1	1	1	1	1		1	1	1	10
City of Middleton/D. Taylor													0
City of Nampa/C. Bowman/J. Barnes	1	1		1	1	1	1	1		1	1	1	10
City of Parma/C. Telford													0
City of Star/N. Mitchell													0
IDEQ/M. Toole					1		1			1			3
ITD/M. Garz		1		1	1		1	1					5
Nampa Highway District #1/E. Shannon	1	1		1	1	1	1	1		1		1	8
Public Participation Committee/D. Smith		1		1				1			1		4
Valley Regional Transit/Jordan Swain					1	1	1	1		1	1		6
Ex officio Members													
Central District Health/R. Howarth	1			1	1		1	1		1	1		7
COMPASS/D. Matson	1	1		1	1	1	1	1		1	1		9
Governor's Office/D. Hensley													0

TRANSPORTATION MODEL ADVISORY COMMITTEE

Attendance List of Members

<u>Member Agency/Name</u>	Jan '13 No Mtg	Feb '13	March '13	April '13 No Mtg	May '13	June '13 No Mtg	July '13 No Mtg	Aug '13	Sept '13 No Mtg	Oct '13	Nov '13 No Mtg	Dec '13 No Mtg	TOTAL
General Members													
ACHD/ <i>S. Martin, A. Pillai</i>		1			1			1		1			4
Ada County/ <i>Meg Basham</i>													0
Canyon County/ <i>J. Almeida, P. Nilsson</i>													0
Canyon Highway District/ <i>No. 4/T. Richard</i>		1			1			1		1			4
City of Boise/ <i>K. Gallagher</i>					1			1		1			3
City of Meridian/ <i>A. Petersen</i>								1		1			2
City of Nampa/ <i>/C. Bowman</i>		1			1					1			3
IDEQ/ <i>D. Luft</i>					1								1
ITD/ <i>K. Sablan & D. Szplett</i>		1			1			1					3
Nampa Highway District #1/ <i>E. Shannon</i>													
Public Participation Committee/ <i>J. Madsen</i>		1			1			1		1			4
Valley Regional Transit/ <i>R. Jalbert</i>					1					1			2
Appointed Transportation/Land Use/Air Quality Professionals													
<i>Vern Brewer, Holladay Engineering</i>					1			1					2
<i>Stephen Lewis, Keller Associates</i>					1			1		1			3
<i>Jim Pline, Pline Engineering</i>		1						1		1			3
<i>Jay Witt, URS Washington Division</i>		1			1			1		1			4
Ex officio Members													
COMPASS/ <i>M. Waldinger</i>		1			1			1		1			4

REGIONAL GEOGRAPHIC ADVISORY COMMITTEE

Attendance List of Members

Member Agency/Name	Jan '13	Feb '13 No Mtg	Mar '13 No Mtg.	Apr '13 No Mtg.	May '13 No Mtg.	Jun '13	July '13	Aug '13	Sept '13	Oct '13	Nov '13 No Mtg	Dec '13	TOTAL
General Members													
Ada County Sheriff/ <i>T. Tyson</i>	1								1	1		1	4
Ada County Assessors/ <i>A .Kawalec</i>	1					1	1	1	1			1	6
ACHD/ <i>C. Spencer</i>	1					1			1	1		1	5
Canyon County Development Services/ <i>S. Higuera</i>													0
Canyon Highway District No. 4/ <i>K. Knapp</i>									1				0
City of Boise/ <i>J. Hetherington</i>	1					1	1	1	1	1		1	7
City of Caldwell/ <i>D. Marston</i>	1					1	1	1				1	5
City of Eagle/ <i>B. Vaughan</i>							1	1		1			3
City of Garden City/ <i>E.Akin</i>													0
City of Kuna/ <i>M. Borzick</i>						1	1	1					3
City of Meridian/ <i>R. Jack</i>	1					1	1	1	1	1		1	7
City of Nampa/ <i>C. Tarter</i>	1						1	1	1	1			5
ITD/ <i>M. Wasdahl</i>	1						1	1					3
Nampa Highway Distr. #1/ <i>N. Lehman</i>													0
Public Participation Committee/ <i>M. Gaddi</i>	1												1
Ex officio Members													
COMPASS/ <i>E. Adolfson</i>	1					1	1	1	1			1	6



COMPASS
COMMUNITY PLANNING ASSOCIATION
of Southwest Idaho

Memorandum

To: Matt Stoll, Executive Director
From: Toni Tisdale, Principal Planner
Date: December 23, 2013
Re: **Request for Approval of Administrative Modification #15 for the FY2013-2017 Regional Transportation Improvement Program**

ACTION REQUESTED:

Approval of Administrative Modification #15 for the FY2013-2017 Regional Transportation Improvement Program (TIP).

BACKGROUND:

Modifications are needed due to changes requested by Valley Regional Transit after rebalancing of their programs. These changes will be made to the FY2013-2017 TIP and the FY2014-2018 TIP via separate actions.

STATUS:

Per Valley Regional Transit staff, December 9, 2013:

- **Transit – Capital Lease or Purchase and Maintenance, Nampa – FY2013 (KN 12761)** – Increase construction by \$233,000 from rebalancing of the transit program. Funds from KN 12765.
- **Transit – Demand Response Operations, Nampa – FY2013 (KN 12763)** – Increase construction by \$6,000 from rebalancing of the transit program.
- **Transit – Preventive Maintenance, Nampa – FY2013 (KN 12765)** – Remove project and move funds to KN 12761 per rebalancing of the transit program.
- **Transit – Mobility Management, Boise – FY2013 (KN 12767)** – Increase construction by \$849,000 from rebalancing of the transit program.
- **Transit – Demand Response Operations, Boise – FY2014 (KN 12774)** – Increase construction by \$113,000 from rebalancing of the transit program.
- **Transit – Planning, Boise – FY2014 (KN 12775)** – Increase preliminary engineering consulting by \$276,000 from rebalancing of the transit program.
- **Transit – Demand Response Operations, Nampa – FY2014 (KN 12781)** – Reduce construction by \$47,000 from rebalancing of the transit program.
- **Transit – Mobility Administration and Implementation, Boise – FY2014 (KN 12785)** – Increase construction by \$1,078,000 from rebalancing of the transit program.

Details of the changes are provided in Attachment 1.

Approval:

All changes for Administrative Modification #15, as provided in this memorandum and detailed on Attachment 1, are approved as of December 23, 2013.



**Matthew J. Stoll, Executive Director
Community Planning Association**

Attachment (1)
pc: 685.03

TT:nb T:\FY14\600 Projects\685 TIP\FY1317 TIP\131223AdminMod15.docx

Administrative Modification #15
 FY2013-2017 Regional Transportation Improvement Program
 Per Valley Regional Transit Staff, December 9, 2013

Key No	Project	Scheduled Costs (including Match) (costs in \$1,000)							
		Phase	2013	2014	2015	2016	2017	PD	SUM
12761	Transit - Capital Lease or Purchase and Maintenance, Nampa - FY2013	PE							0
		PC							0
	Funding Source: FTA 5307 SU Provide vehicle lease or purchase for fixed line, demand response, and support activities and associated equipment and maintenance in the Nampa Urbanized Area. (Federal = \$38,000 <u>\$224,000</u>) Increase CN by \$233,000 from rebalancing the transit program. Funds from KN 12765.	RW							0
		UT							0
		CE							0
		CN		47					47
				280					280
		Sum	0	47	0	0	0	0	47
		280					280		
12763	Transit - Demand Response Operations, Nampa - FY2013	PE							0
		PC							0
	Funding Source: FTA 5307 SU Provide operating funds for demand response service in the Nampa Urbanized Area. (Federal = \$18,000 <u>\$32,000</u>) Increase CN by \$6,000 from rebalancing the transit program.	RW							0
		UT							0
		CE							0
		CN		34					34
				40					40
		Sum	0	34	0	0	0	0	34
		40					40		
12765	Transit - Preventive Maintenance, Nampa - FY2013	PE							0
		PC							0
	Funding Source: FTA 5307 SU Provide preventive maintenance support for fixed route and demand response transit service in the Nampa Urbanized Area. (Federal = \$186,000 <u>\$0</u>) Remove project and move funds to KN 12761 per rebalancing the transit program.	RW							0
		UT							0
		CE							0
		CN		233					233
				0					0
		Sum	0	233	0	0	0	0	233
		0					0		

Key No	Project	Scheduled Costs (including Match) (costs in \$1,000)							
		Phase	2013	2014	2015	2016	2017	PD	SUM
12767	Transit - Mobility Management, Boise - FY2013	PE							0
		PC							0
	Funding Source: FTA 5307 LU Program administration and implementation for mobility management projects in the Boise Urbanized Area. (Federal = \$151,000 \$800,000) Increase CN by \$849,000 from rebalancing the transit program.	RW							0
		UT							0
		CE							0
		CN		151 1000					151 1000
		Sum	0	15 1000	0	0	0	0	151 1000
12774	Transit - Demand Response Operations, Boise - FY2014	PE							0
		PC							0
	Funding Source: FTA 5307 LU Provide operating funds for demand response services in the Boise Urbanized Area. (Federal = \$31,000 \$400,000) Increase CN by \$113,000 from rebalancing the transit program.	RW							0
		UT							0
		CE							0
		CN		387 500					387 500
		Sum	0	387 500	0	0	0	0	387 500
12775	Transit - Planning, Boise - FY2014	PE							0
		PC		134 410					134 410
	Funding Source: FTA 5307 LU Support planning efforts in Boise Urbanized Area. (Federal = \$107,000 \$328,000) Increase PC by \$276,000 from rebalancing the transit program.	RW							0
		UT							0
		CE							0
		CN							0
		Sum	0	134 410	0	0	0	0	134 410
12781	Transit - Demand Response Operations, Nampa - FY2014	PE							0
		PC							0
	Funding Source: FTA 5307 SU Provide operating funds for demand response service in the Nampa Urbanized Area. (Federal	RW							0
		UT							0
		CE							0
		CN		130 83					130 83

Key No	Project	Scheduled Costs (including Match) (costs in \$1,000)							
		Phase	2013	2014	2015	2016	2017	PD	SUM
	= \$69,000 \$66,000 Reduce CN by \$47,000 from rebalancing the transit program.	Sum		130 83	0	0	0	0	130 83
12785	Transit - Mobility Admin. and Implementation, Boise - FY2014	PE							0
		PC							0
	Funding Source: FTA 5307 LU	RW							0
	Program administration and implementation for mobility management projects in the Boise Urbanized Area. Supports mobility management activities to assure effective program of service coordination throughout the region. (Federal = \$13,000 \$873,000) Increase CN by \$1,078,000 from rebalancing the transit program.	UT							0
		CE							0
		CN			13 1091				13 1091
		Sum	0		13 1091	0	0	0	0

PE=Preliminary Engineering

PC = Preliminary Engineering Consultant

RW = Right-of-Way

UT = Utilities

CE = Construction Engineerin-61+

CN = Construction

T:\FY14\600 Projects\685 TIP\FY1317 TIP\AdminMod15.doc



Memorandum

To: Matt Stoll, Executive Director
From: Toni Tisdale, Principal Planner
Date: December 23, 2013
Re: **Request for Approval of Administrative Modification #3 for the FY2014-2018 Regional Transportation Improvement Program**

ACTION REQUESTED:

Approval of Administrative Modification #3 for the FY2014-2018 Regional Transportation Improvement Program (TIP).

BACKGROUND:

Modifications are needed due to changes requested by ACHD to cover a cost increase in design, Valley Regional Transit staff to make programming corrections, and COMPASS staff to convert temporary key numbers to permanent key numbers. A similar modification was requested to make similar changes requested by Valley Regional Transit to the FY2013-2017 TIP.

STATUS:

Per TMA Balancing, December 5, 2013:

- **Three Cities ITS, ACHD (08821)** – Decrease construction by \$320,000 due to lower cost estimate. Move funds to KN 13481.
- **State Street and Collister Drive Intersection, ACHD (13481)** – Increase preliminary engineering consulting by \$320,000 to cover cost overrun in design. Funds from KN 08821.

Per Valley Regional Transit staff, December 9, 2013:

- **Transit – Capital Lease or Purchase and Maintenance, Nampa – FY2013 (12761)** – Increase construction by \$233,000 from rebalancing the transit program. Funds from KN 12765.
- **Transit – Demand Response Operations, Nampa – FY2013 (12763)** – Increase construction by \$6,000 from rebalancing of the transit program.
- **Transit – Preventive Maintenance, Nampa – FY2013 (12765)** – Remove project and move funds to KN 12761 per rebalancing of the transit program.
- **Transit – Mobility Management, Boise – FY2013 (12767)** – Increase construction by \$849,000 from rebalancing of the transit program.
- **Transit – Demand Response Operations, Boise – FY2014 (12774)** – Increase construction by \$9,000 from rebalancing of the transit program.
- **Transit – Planning, Boise – FY2014 (12775)** – Increase preliminary engineering construction by \$11,000 from rebalancing of the transit program.

- **Transit – Demand Response Operations, Nampa – FY2014 (12781)** – Increase construction by \$49,000 from rebalancing of the transit program.
- **Transit – Mobility Administration and Implementation, Boise – FY2014 (12785)** – Increase construction by \$14,000 from rebalancing of the transit program.
- **Transit – Purchase of Service Administration and Implementation, Boise – FY2014 (14245)** – Change the description to add that the service is specific to the cities of Meridian and Eagle. Change match rate to 20% local, increase construction by \$21,000.

Per COMPASS staff: convert temporary to permanent key numbers.

Details of the changes are provided in Attachment 1.

Approval:

All changes for Administrative Modification #3, as provided in this memorandum and detailed on Attachment 1, are approved as of December 23, 2013.



**Matthew J. Stoll, Executive Director
Community Planning Association**

Attachment (1)
pc: 685.03

TT:nb T:\FY14\600 Projects\685 TIP\FY1418 TIP\131223AdminMod3.docx

Administrative Modification #3
 FY2014-2018 Regional Transportation Improvement Program
 Per TMA Balancing, December 5, 2013

Key No	Project	Scheduled Costs (including Match) (costs in \$1,000)							
		Phase	2014	2015	2016	2017	2018	PD	SUM
08821	Three Cities ITS	PE							0
		PC							0
	Funding Source: STP-TMA Project will select and install adaptive signal technology to enhance travel capacity, reduce congestion, and accommodate future demand on the river crossings in the area bounded by SH-44, SH-55 (Eagle Road) and US 20/26 (Chinden Boulevard). Decrease CN by \$320,000 due to lower cost estimate. Move to KN 13481.	RW							0
		UT							0
		CE							0
		CN	1050 730						1050 730
		Sum	1050 730	0	0	0	0	0	1050 730
08821	Three Cities ITS	PE							0
		PC							0
	Funding Source: High Priority SAFETEA-LU Same as above No change to this funding source.	RW							0
		UT							0
		CE	300						300
		CN	1989						1989
		Sum	2289	0	0	0	0	0	2289
13481	State Street and Collister Drive Intersection, ACHD	PE							0
		PC	0 320						0 320
	Funding Source: STP-TMA Intersection improvements at State Street and Collister Drive. Increase PEC by \$320,000 to cover cost overrun in design. Funds from KN 08821.	RW		320					320
		UT							0
		CE				610			610
		CN				4303			4303
		Sum	0 320	320	0	4640	0	0	4960 5280

Per Valley Regional Transit Staff, December 9, 2013

Key No	Project	Scheduled Costs (including Match) (costs in \$1,000)							
		Phase	2014	2015	2016	2017	2018	PD	SUM
12761	Transit - Capital Lease or Purchase and Maintenance, Nampa - FY2013	PE							0
		PC							0
	Funding Source: FTA 5307 SU Provide vehicle lease or purchase for fixed line, demand response, and support activities and associated equipment and maintenance in the Nampa Urbanized Area. (Federal = \$38,000 \$224,000) Increase CN by \$233,000 from rebalancing the transit program. Funds from KN 12765.	RW							0
		UT							0
		CE							0
		CN	47 280						47 280
		Sum	47 280	0	0	0	0	0	47 280
12763	Transit - Demand Response Operations, Nampa - FY2013	PE							0
		PC							0
	Funding Source: FTA 5307 SU Provide operating funds for demand response service in the Nampa Urbanized Area. (Federal = \$27,000 \$32,000) Increase CN by \$6,000 from rebalancing the transit program.	RW							0
		UT							0
		CE							0
		CN	34 40						34 40
		Sum	34 40	0	0	0	0	0	34 40
12765	Transit - Preventive Maintenance, Nampa - FY2013	PE							0
		PC							0
	Funding Source: FTA 5307 SU Provide preventive maintenance support for fixed route and demand responsive transit service in the Nampa Urbanized Area. (Federal = \$186,000) Remove project and move funds to KN 12761 per rebalancing the transit program.	RW							0
		UT							0
		CE							0
		CN	233 0						233 0
		Sum	233 0	0	0	0	0	0	233 0

Key No	Project	Scheduled Costs (including Match) (costs in \$1,000)								
		Phase	2014	2015	2016	2017	2018	PD	SUM	
12767	Transit - Mobility Management, Boise - FY2013	PE							0	
		PC							0	
	Funding Source: FTA 5307 LU Program administration and implementation for mobility management projects in the Boise Urbanized Area. (Federal = \$121,000 \$800,000) Increase CN by \$849,000 from rebalancing the transit program.	RW							0	
		UT							0	
		CE							0	
		CN	151 1000						151 1000	
		Sum	151 1000	0	0	0	0	0	151 1000	
12774	Transit - Demand Response Operations, Boise - FY2014	PE							0	
		PC							0	
	Funding Source: FTA 5307 LU Provide operating funds for demand response services in the Boise Urbanized Area. (Federal = \$393,000 \$400,000) Increase CN by \$9,000 from rebalancing the transit program.	RW							0	
		UT							0	
		CE							0	
		CN	491 500						491 500	
		Sum	491 500	0	0	0	0	0	491 500	
12775	Transit - Planning, Boise - FY2014	PE							0	
		PC	399 410						399 410	
	Funding Source: FTA 5307 LU Support planning efforts in Boise Urbanized Area. (Federal = \$319,000 \$328,000) Increase PC by \$11,000 from rebalancing the transit program.	RW							0	
		UT							0	
		CE							0	
		CN							0	
		Sum	399 410	0	0	0	0	0	399 410	
12781	Transit - Demand Response Operations, Nampa - FY2014	PE							0	
		PC							0	
	Funding Source: FTA 5307 SU Provide operating funds for demand response service in the Nampa Urbanized Area. (Federal	RW							0	
		UT							0	
		CE							0	
		CN	34 83						34 83	

Key No	Project	Scheduled Costs (including Match) (costs in \$1,000)							
		Phase	2014	2015	2016	2017	2018	PD	SUM
	= \$27,000 \$66,000 Increase CN by \$49,000 from rebalancing the transit program.	Sum	34 83	0	0	0	0	0	34 83
12785	Transit - Mobility Admin. and Implementation, Boise - FY2014	PE							0
		PC							0
	Funding Source: FTA 5307 LU Program administration and implementation for mobility management projects in the Boise Urbanized Area. Supports mobility management activities to assure effective program of service coordination throughout the region. (Federal = \$735,000 \$873,000) Increase CN by \$14,000 from rebalancing the transit program.	RW							0
		UT							0
		CE							0
		CN	1077 1091						1077 1091
		Sum	1077 1091	0	0	0	0	0	1077 1091
14245	Transit - Purchase of Service Admin. and Implementation, Boise - FY2014	PE							0
		PC							0
	Funding Source: FTA 5310 LU Provide administration and implementation of purchase of <u>service in the Cities of Meridian and Eagle</u> in the Boise Urbanized Area. (Federal = \$229,000) Change the description. Change match rate to 20% local, increasing construction by \$21,000.	RW							0
		UT							0
		CE							0
		CN	265 286						265 286
		Sum	265 286	0	0	0	0	0	265 286

PE=Preliminary Engineering
PC = Preliminary Engineering Consultant
RW = Right-of-Way

UT = Utilities
CE = Construction Engineerin-61+
CN = Construction

Temporary to Permanent Key Number Conversion

Temporary Key Number	Permanent Key Number	Project
CC005	14343	Sidewalk, North Middleton Road, Middleton
CC011	14344	Pedestrian Signal, South Midland Boulevard, Nampa
CC013	14342	Greenbelt Extension, Orchard Street, Kuna
CC019	14339	City of Nampa SR2S - FY2014 and FY2015
CC023	14340	City of Caldwell SR2S - FY2014

T:\FY14\600 Projects\685 TIP\FY1418 TIP\Amendments\AdminMod3.doc



TO: Chairman Rountree
 Matt Stoll, Executive Director
 COMPASS Board of Directors

FROM: Ken Burgess, Veritas Advisors

DATE: January 13, 2014

SUBJECT: December 2013 Board Update

STATE TRANSPORTATION ISSUES

The 2014 legislative session began on January 6 with Governor Otter's State of the State speech. Transportation advocates intend to drive an educational component during this legislative session to help Legislators understand the state's transportation funding needs more clearly. Governor Otter has been quoted as publicly saying he expects no aggressive efforts to increase transportation funding in the 2014 legislative session.

There are two elements that come into play on this education effort of which COMPASS is a part:

Idaho Transportation Coalition Education Process:

Taking the next step beyond the meetings of the Coalition that occurred during the interim time, the Idaho Transportation Coalition has made arrangements with each of the Chairmen of the Legislative Transportation Committees to accept regular topical presentations to their committees. The latest version of the schedule and topics for these presentations is included with this report. These presentations will occur as the first agenda item in each of the committee meetings listed and are designed to keep transportation funding matters at the forefront of thought during the 2014 session. There is currently no firm plan by any advocate or legislator to aggressively pursue a transportation funding bill this year, but to set the stage and educate in preparation for a solution in 2015.

Local Option Sales Tax Authority:

Concepts for local option sales tax authority for local governments continue to be discussed. Senator Chuck Winder now has a (very) preliminary draft of a concept modeled after the "Oklahoma City model." Senator Winder has shopped this idea with a number of stakeholder groups including individual members of the COMPASS Board. I have personally met with him and have offered some assistance and feedback on his draft. I hope we can have a more completed draft for discussion with the COMPASS Executive Committee soon. If a local option sales tax authority concept is to gain any traction in this legislative session, Senator Winder's draft may serve as a good foundation upon which to build something that can get done this year. The House Revenue and Taxation Committee may still prove to be a tough sell on any major tax-related legislation this year.

FEDERAL TRANSPORTATION ISSUES

2014 Appropriations Bills:

As of this writing, it is expected the details of the 2014 “Omnibus” Appropriations bill may be released today (January 13). On the heels of the budget agreement reached last month, Congressional Appropriators have been working to finalize the details of all 12 bills that must be passed to fund the federal government for this fiscal year – which began October 1. The bill will reveal details of how the \$1.012 Trillion budget will be distributed.

Once those details are released – and assuming the bill can get passed – the Department of Transportation and transportation interest groups will have a better idea of how much they have to implement programs for this year.

Transportation Policy Reauthorization:

The two-year MAP-21 policy authorization bill is set to expire September 30, 2014. (Recall that the last reauthorization was for two years only). There is much talk and a little action regarding an effort to get a longer-term reauthorization completed before September. The House Transportation and Infrastructure Committee has held initial hearings on the matter, and President Obama has expressed a desire to get something done this year.

One major challenge to accomplishing the goal of reauthorization, however, is the very largely looming problem of how to shore up the Highway Trust Fund (HTF) leading into the mid-term elections. A permanent solution for the HTF will almost certainly necessitate increasing fuel taxes or fees, which will not be politically popular in an election year (sounds familiar doesn't it? See State Transportation Issues above).

T:\FY14\700 Services\760 Legislative Services\Burgess COMPASS Board report 1-13-14 (3).docx

Idaho Transportation Coalition



HOUSE COMMITTEE ON TRANSPORTATION AND DEFENSE

2014 PRESENTATIONS

#1	January 14 (Tuesday)	Overview & Status of Bridges	Wayne Hammon, Assd. General Contractors
#2	January 20 (Monday)	The Lifespan of Infrastructure	David Butzier, URS Corp
#3	January 22 (Wednesday)	Safety on Idaho Roads	Scott Stokes, Idaho Transportation Dept.
#4	February 6 (Thursday)	Link Between Infrastructure and Development	Chandler Duncan, DR Group
#5	February 12 (Wednesday)	Reports from the Front Lines – Highway Districts	TBD
#6	February 18 (Tuesday)	Real World Examples from Real World Idahoans	Dwight Little
#7	February 26 (Wednesday)	Transit and Active Transportation in Idaho	Heather Wheeler and Cynthia Gibson
#8	March 4 (Wednesday)	Reports from the Front Lines – Cities	TBD
#9	March 12 (Wednesday)	Impact of Infrastructure on Idaho Commerce	Jeff Sayer, Idaho Dept. of Commerce

Idaho Transportation Coalition



SENATE COMMITTEE ON TRANSPORTATION

2014 PRESENTATIONS

#1	January 9 (Thursday)	Overview & Status of Bridges	Wayne Hammon, Assd. General Contractors
#2	January 21 (Tuesday)	The Lifespan of Infrastructure	David Butzier, URS Corp
#3	January 22 (Thursday)	Safety on Idaho Roads	Scott Stokes, Idaho Transportation Dept.
#4	February 6 (Thursday)	Link Between Infrastructure and Development	Chandler Duncan, DR Group
#5	February 13 (Thursday)	Reports from the Front Lines – Highway Districts	TBD
#6	February 20 (Thursday)	Real World Examples from Real World Idahoans	TBD
#7	February 27 (Thursday)	Transit and Active Transportation in Idaho	Heather Wheeler and Cynthia Gibson
#8	March 6 (Thursday)	Reports from the Front Lines – Cities	TBD
#9	March 13 (Thursday)	Impact of Infrastructure on Idaho Commerce	Jeff Sayer, Idaho Dept. of Commerce