



**COMPASS**  
COMMUNITY PLANNING ASSOCIATION  
of Southwest Idaho

# BOARD PACKET

## March 17, 2014

700 N. East 2nd Street, Suite 200

Meridian, ID 83642

P. 208.855.2558

F.208.855.2559

[www.compassidaho.org](http://www.compassidaho.org)

**COMMUNITY PLANNING ASSOCIATION  
BOARD MEETING CALENDAR  
APRIL 2014 – SEPTEMBER 2014**

<b>COMPASS BOARD MEETING DATE/TIME</b>	<b>LOCATION</b>	<b>KEY ITEMS</b>
<b>Monday, April 21, 2014</b>	<b>COMPASS 1<sup>st</sup> Floor Board Room 700 NE 2<sup>nd</sup> Street Meridian, Idaho</b>	<p>Approve FY2015 General and Special Membership Dues</p> <p>Approve FY2014 Implementation Grant Recipients</p> <p>Approve Changes to Regional Transportation Improvement Program (TIP) Amendment Policy</p> <p>Approve Changes to TMA Guidebook</p> <p>Adopt Resolution Amending the FY2014-2018 Regional Transportation Improvement Program</p>
<b>Monday, May 19, 2014</b>	<b>COMPASS 1<sup>st</sup> Floor Board Room 700 NE 2<sup>nd</sup> Street Meridian, Idaho</b>	<p>Approve Revised Development Review Protocol</p>
<b>Monday, June 16, 2014</b>	<b>COMPASS 1<sup>st</sup> Floor Board Room 700 NE 2<sup>nd</sup> Street Meridian, Idaho</b>	<p>Approve Priorities for End-of-Year Program</p> <p>Approve TIP Application Process and Guide</p> <p>Approve Changes to TMA Balancing Committee Guidelines</p>
<b>Monday, July 21, 2014</b>	<b>COMPASS 1<sup>st</sup> Floor Board Room 700 NE 2<sup>nd</sup> Street Meridian, Idaho</b>	<p>Adopt Resolution Approving <i>Communities in Motion 2040</i> (CIM 2040)</p> <p>Accept <i>Communities in Motion 2040</i> Performance Monitoring Report</p>
<b>Monday, August 18, 2014</b>	<b>COMPASS 1<sup>st</sup> Floor Board Room 700 NE 2<sup>nd</sup> Street Meridian, Idaho</b>	<p>Accept <i>Communities in Motion 2040</i> Housing Forecast</p> <p>Adopt Resolution Approving the FY2015-2019 Regional Transportation Improvement Program and Air Quality Conformity Demonstration</p> <p>Adopt Resolution Approving the FY2015 Unified Planning Work Program</p>
<b>Monday, September 15, 2014</b>	<b>COMPASS 1<sup>st</sup> Floor Board Room 700 NE 2<sup>nd</sup> Street Meridian, Idaho</b>	<p>TBD</p>

**MAKING A MOTION:**

1. **Seek recognition from the chair.**
2. **When you are recognized, say, "I move..."**  
*State your motion clearly, concisely, and completely.*
3. **Wait for someone to "second" your motion.**  
*A "second" does not imply the person making the second agrees with the motion – only that he/she agrees it should be debated.*
4. **Wait while the chair restates the motion.**  
*Be prepared to provide the motion to the chair in writing, if needed or requested, to ensure the chair accurately restates it.*
5. **Respectfully debate your motion.**  
*As the person making the motion, you have the right to speak first, but do not have to. When you speak, state your opinion then respectfully listen to, and consider, other opinions.*
6. **Wait for the chair to take a vote.**  
*After discussion is complete, the chair will call for a vote.*
7. **Listen as the chair announces the result of the vote.**

<b>Motions to Protect Rights:</b>
• Division of the Assembly
• Point of order
• Appeal chair's ruling
• Point of information
• Parliamentary inquiry
<b>Motions to Choose Voting Methods:</b>
• Vote by ballot, roll call, counted vote
• Choose method of nominations
• Open or close nominates or the polls
<b>Motions to Delay Action:</b>
• Refer to a committee
• Postpone to a definite time
• Recess
• Adjourn
• Postpone indefinitely
• Lay on the table
<b>Motions to Vary the Procedures:</b>
• Suspend the rules
• Divide the question
• Request to withdraw a motion
• Request relief from duty – or resign
<b>Motions to Re-examine:</b>
• Reconsider
• Rescind/Amend something previously adopted
• Take from the table
• Discharge a committee

<b>To Change a Proposed Motion:</b>
<b>Amend Motions to Raise Urgent Issues:</b>
• Question of privilege
• Orders of the day
• Object to consideration
<b>Motions to Control Debate:</b>
• Limit debate
• Previous question

**TABLE OF RULES RELATING TO MOTIONS:**

Motion	Debate?	Amend?	Vote
Adjourn	No	No	Majority
Amend	Yes	Yes	Majority
Amend Something Previously Adopted	Yes	Yes	(a) Majority with notice; or (b) 2/3; or (c) Majority of entire membership
Appeal	Normally	No	Majority in negative required to reverse chair's decision
Commit	Yes	Yes	Majority
Debate, Close (Previous Question)	No	No	2/3
Debate, Limit or Extend Limits of	No	Yes	2/3
Main Motion	Yes	Yes	Majority
Postpone	Yes	Yes	Majority
Previous Question	No	No	2/3
Recess	No	Yes	Majority
Reconsider	If motion to be reconsidered debatable	No	Majority
Rescind	Yes	Yes	(a) Majority with notice; or (b) 2/3; or (c) Majority of entire membership
Refer (Commit)	Yes	Yes	Majority
Suspend the Rules (of Order)	No	No	2/3
Suspend the Rules (standing or convention standing rules)	No	No	Majority
Voting, motions relating to	No	Yes	Majority



**VIII. INFORMATION/DISCUSSION ITEM**

2:50

**A. Status Report – Finance Committee**

**Rebecca Arnold**

*Finance Committee Chair Rebecca Arnold will provide a status report on action taken at the February 20, 2014, Finance Committee meeting.*

**IX. EXECUTIVE DIRECTOR'S REPORT (INFORMATION ONLY) (2:55)**

Page 20

**\*A. Staff Activity Report**

Page 25

**\*B. Status Report – Current Air Quality Efforts**

Page 26

**\*C. Status Report – Current Transportation Project Information**

Page 35

**\*D. Status Report – Standing Committees' Attendance**

Page 39

**\*E. Administrative Modifications**

**X. ADJOURNMENT (3:00)**

\*Enclosures. Times are approximate. Agenda is subject to change.

T:\FY14\900 Operations\990 Direct Operations Maint\Board\2014 agendaminutes\agenda03172014.doc



**BOARD OF DIRECTORS' MEETING  
FEBRUARY 24, 2014  
COMPASS, 1<sup>ST</sup> FLOOR BOARD ROOM  
700 NE 2<sup>ND</sup> STREET  
MERIDIAN, IDAHO**

**\*\*MINUTES\*\***

**ATTENDEES:** Kathy Alder, Commissioner, Canyon County  
 Rebecca Arnold, Commissioner, Ada County Highway District  
 Nichoel Baird Spencer for Jim Reynolds, Mayor, City of Eagle  
 Sara Baker, Commissioner, Ada County Highway District, **Vice Chair**  
 Aaron Bauges, Idaho Transportation Department  
 Dave Case, Commissioner, Ada County  
 Tammy de Weerd, Mayor, City of Meridian  
 John Evans, Mayor, Garden City  
 Kelli Fairless, Valley Regional Transit  
 Jim Hansen, Commissioner, Ada County Highway District  
 Craig Hanson, Commissioner, Canyon County  
 Bob Henry, Mayor, City of Nampa  
 Maryanne Jordan, Councilwoman, City of Boise  
 Bruce Krosch, Southwest District Health, Ex officio  
 Kathleen Lacey for Dave Bieter, Mayor, City of Boise,  
 John McEvoy, Commissioner, Canyon Highway District #4  
 Bryce Millar, Commissioner, Nampa Highway District #1, **Immediate Past Chair**  
 Paul Raymond, Councilman, City of Nampa  
 Charlie Rountree, Councilman, City of Meridian, **Chair**  
 Steven Rule, Commissioner, Canyon County, **Secretary-Treasurer**  
 Matt Stoll, Executive Director, Community Planning Association, Ex officio  
 Darin Taylor, Mayor, City of Middleton  
 Jim Tibbs, Commissioner, Ada County  
 Pete Wagner, Department of Environmental Quality  
 Rick Yzaguirre, Commissioner, Ada County

700 N. East 2nd Street, Suite 200

Meridian, ID 83642

P. 208.855.2558

F.208.855.2559

[www.compassidaho.org](http://www.compassidaho.org)

**MEMBERS ABSENT:** John Brunelle, Capitol City Development Corporation  
Elaine Clegg, Councilwoman, City of Boise  
Bob Flowers, Mayor, City of Parma  
David Hensley, Governor's Office, Ex officio  
Nathan Mitchell, Mayor, City of Star  
Garret Nancolas, Mayor, City of Caldwell, **Chair Elect**  
Greg Nelson, Mayor, City of Kuna  
Brent Orton, City of Caldwell  
Patrick Rice, Greater Boise Auditorium District, Ex officio  
David Smith, Boise State University

**OTHERS:** Sabrina Anderson, Ada County Highway District  
John Bechtel, Mayor, City of Wilder  
Nancy Brecks, Community Planning Association  
Ken Burgess, Veritas Advisors  
Liisa Itkonen, Community Planning Association  
Megan Larsen, Community Planning Association  
Amy Luft, Community Planning Association  
Larry Maneely, Ada County  
Don Matson, Community Planning Association  
Toni Tisdale, Community Planning Association  
Charles Trainor, Community Planning Association

#### **CALL TO ORDER:**

Chair Rountree called the meeting to order at 1:30 pm.

#### **AGENDA ADDITIONS/CHANGES**

Matt Stoll noted that the Special Item may become an Action Item if the Board agrees to general support of Senator Winder's draft local option sales tax legislation.

Matt Stoll requested to add Action Item VII-C, Approve City of Wilder as a COMPASS General member.

After discussion, **John Evans moved and John McEvoy seconded approval to amend the agenda adding Action Item VII-C as presented. Motion passed unanimously.**

#### **OPEN DISCUSSION/ANNOUNCEMENTS**

None.

#### **CONSENT AGENDA**

- A. Approve January 27, 2014, Board Meeting Minutes**
- B. Receive Approved December 17, 2013, Executive Committee Meeting Minutes**
- C. Approve COMPASS Records Retention Policy**
- D. Approve Justin Lucas and Bruce Chatterton as City of Meridian Non-Elected COMPASS Board Alternates**

**Kathy Alder moved and Rick Yzaguirre seconded approval of the Consent Agenda as presented. Motion passed unanimously.**

## **SPECIAL ITEMS**

### **A. Status Report - 2014 Idaho Legislative Session**

Ken Burgess reviewed Senator Winder's draft local option sales tax legislation, and outlined various other proposed legislation relating specially to transportation funding.

Steve Rule stated for the record as opposing local option sales tax legislation, which he sees as bad for Canyon County because it will send business to Oregon, which does not have sales tax.

After discussion, **Darin Taylor moved and Tammy de Weerd seconded COMPASS Board support of Senator Winder's bill for local option sales tax as presented. Motion passed with one abstention from Pete Wagner.**

## **ACTION ITEMS**

### **A. Approve List of New Project Priorities for the Draft FY2015-2019 Regional Transportation Improvement Program**

Toni Tisdale presented a list of new project priorities for the draft FY2015-2019 Regional Transportation Improvement Program. The Regional Technical Advisory Committee recommended COMPASS Board approval of the list as presented on January 22, 2014.

After discussion, **Rebecca Arnold moved and John Evans seconded approval of the list of new project priorities for the draft FY2015-2019 Regional Transportation Improvement Program as presented. Motion passed unanimously.**

### **B. Authorize Release of Draft *Communities in Motion* (CIM) 2040 Plan Document for Public Comment**

Liisa Itkonen reviewed the draft CIM 2040 plan document to be released for public comment.

After discussion, **Steve Rule moved and Sara Baker seconded to release the draft CIM 2040 plan document for public comment as presented. Motion passed unanimously.**

### **C. Approve Request from City of Wilder for COMPASS Membership**

Matt Stoll presented the City of Wilder's request to join COMPASS as a general member at a prorated rate for FY2014, February 1 thru September 30, of \$699.00.

After discussion, **Kathy Alder moved and Paul Raymond seconded approval of the City of Wilder's membership request at the prorated rate of \$699.00 for FY2014. Motion passed unanimously.**

Mayor Bechtel stated Luke McHenry, Wilder's Public Works Supervisor, will be the primary member for Wilder. Mayor Bechtel will be the alternate.



**ADJOURNMENT**

Tammy de Weerd moved and Dave Case seconded adjournment at 2:45 pm.  
Motion passed unanimously.

Dated this 17th day of March 2014.

Approved:

By: \_\_\_\_\_  
Charlie Rountree, Chair  
Community Planning Association of  
Southwest Idaho

Attest:

By: \_\_\_\_\_  
Matthew J. Stoll, Executive Director  
Community Planning Association of  
Southwest Idaho

T:\FY14\900 Operations\990 Direct Operations Maint\Board\2014 agendaminutes\minutes02242014.doc



**EXECUTIVE COMMITTEE MEETING  
JANUARY 21, 2014  
COMPASS 2ND FLOOR LARGE CONFERENCE ROOM  
MERIDIAN, IDAHO**

**\*\*MINUTES\*\***

- ATTENDEES:** Sara Baker, Commissioner, Ada County Highway District, **Secretary-Treasurer**  
Bob Henry, Mayor, City of Nampa  
Garret Nancolas, Mayor, City of Caldwell  
Jim Reynolds, Mayor, City of Eagle  
Steve Rule, Commissioner, Canyon County  
Darin Taylor, Mayor, City of Middleton  
Rick Yzaguirre, Commissioner, for Dave Case, Commissioner, Ada County
- MEMBERS ABSENT:** Dave Bieter, Mayor, City of Boise, **Immediate Past Chair**  
Bryce Millar, Commissioner, Nampa Highway District No.1, **Chair**  
Charlie Rountree, Councilman, City of Meridian, **Chair Elect**
- OTHERS PRESENT:** Nancy Brecks, Community Planning Association  
Ken Burgess, Veritas Advisors  
Kelli Fairless, Valley Regional Transit  
Megan Larsen, Community Planning Association  
Amy Luft, Community Planning Association  
Matt Stoll, Executive Director, Community Planning Association  
Dave Wallace, Ada County Highway District

**CALL TO ORDER:**

Secretary-Treasurer Sara Baker called the meeting to order at 2:00 pm.

**AGENDA ADDITIONS/CHANGES**

Matt Stoll requested approval to add Action Item VI-C Board Member Travel to the agenda.

After discussion, **Darin Taylor moved and Jim Reynolds seconded to amend the agenda adding Action Item VI-C Board Member Travel as requested. Motion passed unanimously.**

## **OPEN DISCUSSION/ANNOUNCEMENTS**

Mayors announced their respective State of the City dates.

## **CONSENT AGENDA**

### **A. Approve December 17, 2013, Executive Committee Meeting Minutes**

**Steve Rule moved and Darin Taylor seconded approval of the Consent Agenda as presented. Motion passed with one abstention from Sara Baker.**

## **ACTION ITEMS**

### **A. Establish February 24, 2014, COMPASS Board Meeting Agenda**

Matt Stoll presented staff recommended Agenda Items 1-14 for the February 24, 2014, COMPASS Board meeting. Matt requested the latitude to amend the agenda as necessary.

**After discussion, Garret Nancolas moved and Darin Taylor seconded approval of the February 24, 2014, Board meeting Agenda Items 1-14 as presented. Matt Stoll has the latitude to amend the agenda as necessary. Motion passed unanimously.**

### **B. Discuss 2014 Idaho Legislative Session**

Ken Burgess discussed potential local option sales tax legislation proposed by Senator Chuck Winder.

**After discussion, Darin Taylor moved and Bob Henry seconded to allow Ken Burgess to explore the proposed legislation, discern the level of support for the legislation, and analyze issues of concern, then report back to the Executive Committee. Motion passed with one nay vote.**

### **C. Approve Board Member Travel**

Matt Stoll presented a travel request from Elaine Clegg to attend an Association of Metropolitan Planning Organizations (AMPO) meeting in Washington DC. Elaine represents COMPASS on the AMPO Board and is the AMPO Board Vice President.

**After discussion, Darin Taylor moved and Steve Rule seconded approval of Elaine Clegg's travel request as presented. Motion passed with one nay vote from Sara Baker.**

**INFORMATION/DISCUSSION ITEM**

**A. Discuss 2014 Transportation Management Area Certification Review**

Matt Stoll announced that COMPASS will undergo its third federal "certification review" this spring, with a site visit at COMPASS likely in April 2014.

**ADJOURNMENT**

**Secretary-Treasurer Baker adjourned the meeting at 3:12 pm.**

**Dated this 18th day of February 2014.**

**Approved:**

**By: \_\_\_\_\_  
Charlie Rountree, Chair  
Community Planning Association  
of Southwest Idaho**

**Attest:**

**By: \_\_\_\_\_  
Matthew J. Stoll, Executive Director  
Community Planning Association of  
Southwest Idaho**

**FINANCE COMMITTEE MEETING  
DECEMBER 12, 2013  
COMPASS 2<sup>ND</sup> FLOOR LARGE CONFERENCE ROOM  
MERIDIAN, IDAHO**

**\*\*MINUTES\*\***



**ATTENDEES:** Rebecca Arnold, Commissioner, Ada County Highway District, **Chair**  
John McEvoy, Commissioner, Canyon Highway District #4  
Charlie Rountree, Councilman, City of Meridian  
Steve Rule, Commissioner, Canyon County, **Vice Chair**, via telephone  
Dave Wallace for Sara Baker, Commissioner, Ada County Highway District

**MEMBERS ABSENT:** Garret Nancolas, Mayor, City of Caldwell  
Rick Yzaguirre, Commissioner, Ada County

**OTHERS PRESENT:** Nancy Brecks, Community Planning Association  
Keith Holmes, Community Planning Association  
Megan Larsen, Community Planning Association  
Alaina Schrenk, Harris & Co., PLLC  
Matt Stoll, Community Planning Association  
Josh Tyree, Harris & Co., PLLC, via telephone

**CALL TO ORDER:**

**Vice Chair Steve Rule called the meeting to order at 12:12 pm.**

**AGENDA ADDITIONS/CHANGES**

None.

**OPEN DISCUSSION/ANNOUNCEMENTS**

None.

**CONSENT AGENDA**

**A. Approve August 8, 2013, Finance Committee Meeting Minutes**

**Charlie Rountree moved and John McEvoy seconded approval of the Consent Agenda as presented. Motion passed unanimously.**

**INFORMATION/DISCUSSION ITEM**

**A. Status Report - FY2014 General and Special Membership Dues Received To Date**

Megan Larsen provided a status report on FY2014 General and Special membership dues received to date.

## **ACTION ITEMS**

### **A. Approve Draft 2013 Audit**

Josh Tyree from Harris & Co., PLLC presented the 2013 audit report. Josh stated it was an unqualified audit report with no reportable conditions or material weaknesses identified. COMPASS qualifies as a low-risk auditee.

(Vice Chair Rule turned the meeting over to Chair Rebecca Arnold at 12:23 pm.)

After discussion, **John McEvoy moved and Charlie Rountree seconded approval of the 2013 audit report as presented. Motion passed unanimously.**

### **B. Approve Variance Report for October 1, 2012 - September 30, 2013**

Megan Larsen presented the October 1, 2012 - September 30, 2013 Variance Report.

After discussion, **Steve Rule moved and Charlie Rountree seconded approval of the October 1, 2012 - September 30, 2013 Variance Report as presented. Motion passed unanimously.**

### **C. Recommend COMPASS Board Approval of Revision 1 of the FY2014 Unified Planning Work Program**

Megan Larsen presented Revision 1 of the FY2014 Unified Planning Work Program.

After discussion, **Steve Rule moved and John McEvoy seconded to recommend COMPASS Board approval of Revision 1 of the FY2014 Unified Planning Work Program as presented, with the caveat that the Board discuss options for use of approximately \$45,000 in STP-Urban funds. Motion passed unanimously.**

### **D. Establish 2014 Finance Committee Meeting Dates**

Megan Larsen presented 2014 Finance Committee meeting dates.

After discussion, **Charlie Rountree moved and Steve Rule seconded to approve the 2014 Finance meeting dates as presented. Motion passed unanimously.**

## **ADJOURNMENT**

**Charlie Rountree moved and John McEvoy seconded adjournment at 12:47 pm. Motion passed unanimously.**

**Dated this 20th day of February 2014.**

**Approved:**

**By: \_\_\_\_\_  
Rebecca Arnold, Chair**

**Attest:**

**By: \_\_\_\_\_  
Steve Rule, Vice Chair**

# COMPASS BOARD AGENDA ITEM V-D

Date: March 17, 2014



**Topic: Records for Destruction**

**Background/Summary:**

The COMPASS Board approved the Records Retention Policy at the February 24, 2014, meeting.

The policy describes the type of records that COMPASS has and specifies the retention period for those types of records. The policy further describes the process of destruction for those records that have exceeded their retention period.

In compliance with the policy guidance, COMPASS staff proposes to destruct the records listed on the attachment because those records have exceeded their Board-approved retention period.

COMPASS staff has provided a list of records proposed for destruction to the Idaho state archivist and expects that the state archivist will not object to the destruction of the listed records.

COMPASS staff will have the records destructed by a commercial shredding service 30 days from the date that destruction is approved by both the COMPASS Board and the Idaho state archivist. The shredding service will provide a certification of destruction.

**Request/Recommendation:**

Approve destruction of the records listed in the attachment.

**Implication (policy and/or financial):**

If both the COMPASS Board and the Idaho state archivist approve the destruction of the listed records, the destruction will be completed as described. If either the COMPASS Board or the Idaho state archivist do not approve destruction of the listed records, the records will be retained.

**More Information:**

- 1) Attachment
- 2) For detailed information contact: Megan Larsen, at 475-2228 or [mlarsen@compassidaho.org](mailto:mlarsen@compassidaho.org).

ML:nb T:\Operations\Admin & Office\Records Management\Records Destruction Board Memo 3-17-2014.docx

**COMMUNITY PLANNING ASSOCIATION OF SOUTHWEST IDAHO**  
**Inventory of Records to be Destroyed**

Description of record	When created*	Retention period for this record in years	Expiration of retention period	Date list to state archivist	Date of request for Board approval	Proposed destruction date
FY2001 accounts payable records, including check stubs from payments, COMPASS request for payment forms, vendor invoices, packing slips, COMPASS purchase orders, and voided checks; alphabetical by vendor, vendors A-I	9/30/2001	5	9/30/2006	3/5/2014	3/17/2014	4/16/2014
FY2002 accounts payable records, including check stubs from payments, COMPASS request for payment forms, vendor invoices, packing slips, COMPASS purchase orders, and voided checks; alphabetical by vendor, vendors A-I	9/30/2002	5	9/30/2007	3/5/2014	3/17/2014	4/16/2014
FY2002 accounts payable records, including check stubs from payments, COMPASS request for payment forms, vendor invoices, packing slips, COMPASS purchase orders, and voided checks; alphabetical by vendor, vendors I-S	9/30/2002	5	9/30/2007	3/5/2014	3/17/2014	4/16/2014
FY2002 accounts payable records, including check stubs from payments, COMPASS request for payment forms, vendor invoices, packing slips, COMPASS purchase orders, and voided checks; alphabetical by vendor, vendors T-Z	9/30/2002	5	9/30/2007	3/5/2014	3/17/2014	4/16/2014
FY2005 accounts payable records, including check stubs from payments, COMPASS request for payment forms, vendor invoices, packing slips, COMPASS purchase orders, and voided checks; alphabetical by vendor, vendors C-N	9/30/2005	5	9/30/2010	3/5/2014	3/17/2014	4/16/2014
FY2006 accounts payable records, including check stubs from payments, COMPASS request for payment forms, vendor invoices, packing slips, COMPASS purchase orders, and voided checks; alphabetical by vendor, vendors I-P	9/30/2006	5	9/30/2011	3/5/2014	3/17/2014	4/16/2014
FY2007 accounts payable records, including check stubs from payments, COMPASS request for payment forms, vendor invoices, packing slips, COMPASS purchase orders, and voided checks; alphabetical by vendor, vendors K-P	9/30/2007	5	9/30/2012	3/5/2014	3/17/2014	4/16/2014
FY2008 accounts payable records, including check stubs from payments, COMPASS request for payment forms, vendor invoices, packing slips, COMPASS purchase orders, and voided checks; alphabetical by vendor, vendors A-I	9/30/2008	5	9/30/2013	3/5/2014	3/17/2014	4/16/2014



**COMMUNITY PLANNING ASSOCIATION OF SOUTHWEST IDAHO**  
**Inventory of Records to be Destroyed**

Description of record	When created*	Retention period for this record in years	Expiration of retention period	Date list to state archivist	Date of request for Board approval	Proposed destruction date
FY2008 accounts payable records, including check stubs from payments, COMPASS request for payment forms, vendor invoices, packing slips, COMPASS purchase orders, and voided checks; alphabetical by vendor, vendors U-Z	9/30/2008	5	9/30/2013	3/5/2014	3/17/2014	4/16/2014
FY2005 subsidiary ledger reports detailing job cost by program, excel spreadsheets summarizing costs by job	9/30/2005	5	9/30/2010	3/5/2014	3/17/2014	4/16/2014
Worksheets used to support the preparation of the FY2006 UPWP	8/15/2005	5	9/30/2010	3/5/2014	3/17/2014	4/16/2014
FY2006 COMPASS purchase orders	9/30/2006	5	9/30/2011	3/5/2014	3/17/2014	4/16/2014
FY2006 subsidiary ledger reports detailing transactions posted in the payroll and accounts payable subsidiary ledgers	9/30/2006	5	9/30/2011	3/5/2014	3/17/2014	4/16/2014
FY2006 payroll check stubs detailing gross pay, deductions and net pay for each employee for each pay period	9/30/2006	5	9/30/2011	3/5/2014	3/17/2014	4/16/2014
FY2007 reports detailing transactions posted in the general ledger	9/30/2007	5	9/30/2012	3/5/2014	3/17/2014	4/16/2014
FY2007 subsidiary ledger reports detailing transactions posted in the payroll and accounts payable subsidiary ledgers	9/30/2007	5	9/30/2012	3/5/2014	3/17/2014	4/16/2014
FY2006 reports detailing transactions posted in the general ledger	9/30/2006	5	9/30/2011	3/5/2014	3/17/2014	4/16/2014
FY2006 subsidiary ledger reports detailing transactions posted in the payroll and accounts payable subsidiary ledgers	9/30/2006	5	9/30/2011	3/5/2014	3/17/2014	4/16/2014

\*If the description covers a group of records, the date refers to the most recent record in the group.

# COMPASS BOARD AGENDA ITEM VII-A

Date: March 17, 2014



**COMPASS**  
COMMUNITY PLANNING ASSOCIATION  
of Southwest Idaho

## Topic: Development Tracking Process

### Background/Summary:

On October 15, 2012, the COMPASS Board approved the *Communities in Motion 2040* (CIM 2040) Vision, with a 2040 population forecast of 1,022,000. The CIM 2040 Vision is the basis for the transportation analysis for the CIM 2040 plan.

Development tracking provides an overview of how well development in the region, including new housing and employment, is consistent with the CIM 2040 Vision. This tracking and reporting will support several federal regulations and local policies:

1. Implementation of CIM 2040 goals, objectives, and tasks
2. Reporting progress and overages in the Performance Monitoring Report
3. Systematically identifying updates and revisions to the CIM forecast
4. Provide accurate data for members' decision making
5. Using the most recent data for Air Quality Conformity (§ 93.110)

DAC recommended on November 20, 2013, to maintain the CIM 2040 Vision forecast with the option to create a revised 2040 planning forecast to reconcile new developments. DAC will annually compare entitled developments to the CIM 2040 Vision. Where entitled developments exceed the 2040 Vision, the DAC will 1) reconcile growth within demographic areas (aggregation of traffic analysis zones), and 2) if there is insufficient growth forecasted in the demographic area to cover these additional entitlements, add the overages to the forecast, subsequently increasing the regional control totals.

This reconciled and/or cumulative forecast will be used for planning purposes such as corridor studies, subarea plans, area of influence model runs for traffic impact studies, and other member agency requests. This forecast will be presented to the Board in the Performance Monitoring Report.

### Request/Recommendation:

Approval of the Development tracking process.

### Implication (policy and/or financial):

Development tracking will support the update to the CIM forecast and enable COMPASS staff to use best available data for Air Quality Conformity.

### More Information:

- 1) For detailed information contact: Carl Miller, Principal Planner, at 475-2239 or [cmiller@compassidaho.org](mailto:cmiller@compassidaho.org).

CM:nb T:\FY14\600 Projects\647 Regional Growth Issues\Development Tracking\boardmmo-developmenttracking-031714.docx

700 N. East 2nd Street,

Suite 200

Meridian, ID 83642

P. 208.855.2558

F.208.855.2559

[www.compassidaho.org](http://www.compassidaho.org)

# COMPASS BOARD AGENDA ITEM VII-B

Date: March 17, 2014



**COMPASS**  
COMMUNITY PLANNING ASSOCIATION  
of Southwest Idaho

## Topic: 2014 Population Estimates

### Background/Summary:

COMPASS develops population estimates for city and county jurisdictions in Ada and Canyon Counties. Since 1990, COMPASS has used a housing unit method estimation model to update population estimates. This method is based on the premise that changes in the number of occupied housing units reflect changes in the population. This estimation process is broken into three distinct parts: geographic boundary modification, housing unit estimation, and household population estimation and is calculated as:

$$2014 \text{ Population} = \text{Decennial Census Population} + \text{Annexed Population} + (\text{New Residential Units Permitted} * \text{HH Size by Census Block} * \text{Residential Occupancy Rate by Census Block}).$$

The 2014 population estimates reflect two changes to the methodology previously used:

1. The Demographic Advisory Committee (DAC) has recommended updating the residential occupancy rates with the Census Bureau's 2012 American Community Survey data. This data is available for cities over 20,000 in population (Boise, Caldwell, Eagle, Meridian, and Nampa). Smaller cities will continue to use the 2010 decennial census vacancy rates until American Community Survey data or other reliable occupancy rate data from other sources are available.
2. COMPASS has also derived population estimates for annexed areas by identifying census block groups rather than traffic analysis zones (TAZ) for more accurate estimates.

The DAC recommended COMPASS Board acceptance of the 2014 population estimates on February 12, 2014. After the DAC meeting, the City of Meridian noted an increase of 790 in population due to a recent annexation, the increase is reflected in the attached 2014 population estimates.

### Request/Recommendation

Accept the 2014 population estimates.

### Implication (policy and/or financial):

Population estimates help to establish membership dues and are used by policy makers, planners, and the public for grants, planning, and other uses.

### More Information:

- 1) Attachment—2014 population estimates
- 2) For detailed information contact: Carl Miller, Principal Planner, at 475-2239 or [cmiller@compassidaho.org](mailto:cmiller@compassidaho.org).

CM:nb T:\FY14\600 Projects\620 Growth and Transportation System Monitoring\Population\boardmemo\_population\_031714.docx

**2014 Population Estimate**  
**City and County Population Estimate for April 1, 2014**  
**Areas Refer to Corporate Limits of Cities as of 1/1/2014**

	2014 Population*	2010 Population ^	2010-2014 Increase	2014 Percent of County	Share of Region		
					2000	2010	2014
<b>Ada</b>							
Boise City <sup>a</sup>	217,730	205,671	12,059	51.6%	43.0%	35.4%	35.1%
Eagle <sup>b</sup>	23,460	19,908	3,552	5.6%	2.6%	3.4%	3.8%
Garden City	11,160	10,972	188	2.6%	2.5%	1.9%	1.8%
Kuna	16,070	15,210	860	3.8%	1.2%	2.6%	2.6%
Meridian <sup>a</sup>	85,240	75,092	10,148	20.2%	8.1%	12.9%	13.7%
Star <sup>Δ</sup>	7,140	5,793	1,347	1.7%	0.4%	1.0%	1.2%
Unincorporated	61,130	59,849	1,281	14.5%	11.9%	10.3%	9.9%
<b>Total County</b>	<b>421,920</b>	<b>392,365</b>	<b>29,555</b>		<b>69.6%</b>	<b>67.5%</b>	<b>68.0%</b>
<b>Canyon</b>							
Caldwell <sup>b</sup>	47,440	46,237	1,203	23.9%	6.0%	8.0%	7.7%
Greenleaf **	840	846	-6	0.4%	0.2%	0.1%	0.1%
Melba	520	513	7	0.3%	0.1%	0.1%	0.1%
Middleton	6,150	5,524	626	3.1%	0.7%	1.0%	1.0%
Nampa <sup>a</sup>	84,840	81,557	3,283	42.8%	12.0%	14.0%	13.7%
Notus	540	531	9	0.3%	0.1%	0.1%	0.1%
Parma	2,010	1,983	27	1.0%	0.4%	0.3%	0.3%
Wilder	1,540	1,533	7	0.8%	0.3%	0.3%	0.2%
Unincorporated	54,270	50,069	4,201	27.4%	10.6%	8.6%	8.8%
<b>Total County</b>	<b>198,160</b>	<b>188,923</b>	<b>9,237</b>		<b>30.4%</b>	<b>32.5%</b>	<b>32.0%</b>
<b>Canyon and Ada Counties</b>	<b>620,080</b>	<b>581,288</b>	<b>38,792</b>				

\*2014 COMPASS Population Estimate

^2010 Census Population Count

ΔThe City of Star has 9 persons in Canyon County

<sup>a</sup> 2013 American Community Survey Data (1-year estimate)

<sup>b</sup> 2013 American Community Survey Data (3-year estimate)

# COMPASS BOARD AGENDA ITEM VII-C

DATE: March 17, 2014



**Topic: City of Eagle Membership Services Request**

**Background/Summary:**

City of Eagle and COMPASS staff met February 4, 2014, to discuss the Beacon Light Corridor land use review. COMPASS staff provided an outline of the work tasks and estimate of workdays to City of Eagle to incorporate into the full scope of work.

City of Eagle staff presented the Beacon Light Corridor land use review scope of work to their city council on February 11, 2014. The council directed City of Eagle staff to move forward.

Technical support provided will be travel demand modeling and analysis of the effects of different land use assumptions in west Eagle.

COMPASS has an internal policy/procedure to seek COMPASS Board approval if project-specific member request will exceed 4 workdays of staff time.

Program 701 has enough workdays to cover this member request, therefore, the FY2014 UPWP will not need an amendment.

**Request/Recommendation:**

Staff seeks COMPASS Board approval to use up to 20 workdays allocated in Program 701: Membership Services to provide technical assistance to the City of Eagle with the Beacon Light Corridor land use review.

**Implication (policy and/or financial):**

Staff cannot provide the full scope of technical support to the City of Eagle without COMPASS Board approval.

**More Information:**

- 1) Attachment 1: Membership Services Scope of Work – City of Eagle Request
- 2) For detailed information contact: MaryAnn Waldinger, Principal Planner, at 475-2242 or [mwaldinger@compassidaho.org](mailto:mwaldinger@compassidaho.org).

MW:nb T:\FY14\700 Services\701 General Membership Services\EagleMemReqBoard.docx

City of Eagle, Member Services Request

February 4, 2014

Evaluate the effects of different land use intensities in the northwest foothills and northwest Eagle on the transportation system. The results will be used by the city to help determine if there is need to modify their comprehensive plan.

COMPASS staff will provide the following support:

- Evaluation of where the forecasted travel demand is coming from and going to along Beacon Light Rd.
  - Task: "select link" analysis of 2 or 3 segments along Beacon Light Rd using the official set of demographics approved by the COMPASS Board and the funded roadway system per draft CIM 2040.
  - Up to 12 model runs assuming 3 segments evaluated for base year and 3 forecast years.
  
- Evaluate the changes to the travel demand along Beacon Light Rd using 4 different land use scenarios defined by City of Eagle. Land use changes will be within the City of Eagle's jurisdiction and at staff's direction.
  - Task: Up to 16 travel demand model runs and evaluation of changes in demand.
    - 4 model runs for each land use scenario for base year and 3 forecast years.
  
- City of Eagle staff can request changes to roadway characteristics such as through lanes, for evaluation purposes. Changes to roadways must be consistent with ACHD's CIP or the draft CIM 2040 corridors.
  - Task: provide an agreed upon number of travel demand model runs testing changes to roadway characteristics and an evaluation of the changes in travel demand.

FY14 workday estimate: 15 to 20 days

All workdays exist within task 701 membership services

## FEBRUARY 2014 - STAFF ACTIVITY REPORT

PROGRAM NO.		
601	<b>UNIFIED PLANNING WORK PROGRAM DEVELOPMENT AND FEDERAL ASSURANCES</b>	<b>MEGAN LARSEN</b> <ul style="list-style-type: none"> <li>• Processed and tracked revenues and expenditures associated with the FY2014 Unified Planning Work Program.</li> <li>• Tracked changes and announcements in the Federal Register and the Daily Digest.</li> <li>• Tracked announcements from funding resources to identify potential grants for COMPASS and member agencies.</li> <li>• Received requests from member agencies for COMPASS staff assistance in the FY2015 UPWP.</li> <li>• Prepared draft program worksheets for FY2015 UPWP.</li> <li>• Met with City of Boise Human Resources Department regarding their health insurance program on February 5, 2014.</li> <li>• Met with Commissioners Millar and McEvoy regarding general membership dues formula on February 18, 2014.</li> </ul>
605	<b>MULTI-MODAL PLANNING SUPPORT</b>	<b>WALT SATTERFIELD</b> <ul style="list-style-type: none"> <li>• Participated in weekly GoRide coordination meetings with Valley Regional Transit.</li> <li>• Participated on the Meridian Transit Project Team's bi-monthly meeting (on February 7 and February 21, 2014).</li> <li>• Attended Annual Refugee Conference on February 10 - 11, 2014 and provided outreach materials relating to the update of the Transportation Service Coordination Plan for Ada and Canyon Counties.</li> <li>• Met with CTAI to discuss mobility coordination and the provider directory website on February 4, 2014 and February 14, 2014.</li> <li>• Participated in the Community Link coordination meeting with Valley Regional Transit, Treasure Valley Transit, the Area Agency on Aging (District 3) and the Idaho Transportation Department on February 10, 2014 and February 24, 2014.</li> <li>• Participated on the Regional Coordination Council on February 18, 2014.</li> <li>• Attended City of Meridian Stakeholder meeting to discuss transit route options on February 27, 2014.</li> <li>• Developed map for the proposed deviated route for Valley Regional Transit's GoRide/Village Van program.</li> <li>• Updated GIS files for 2014 transit routes.</li> <li>• Collected employment and residential information for Valley Regional Transit.</li> <li>• Created park and ride assessment sheet for park and ride utilization collection.</li> <li>• Developed a scope of work for creating a two-county pathway plan in response to a presentation by the Foundation for Ada Canyon Trails Systems (F.A.C.T.S.) members to the COMPASS Board in January 2014.</li> </ul>

PROGRAM NO.	
620	<p><b>GROWTH AND TRANSPORTATION SYSTEM MONITORING</b></p> <p style="text-align: right;"><b>CARL MILLER</b></p> <ul style="list-style-type: none"> <li>• Reviewed 2014 Population Estimates with the Demographic Advisory Committee on February 12, 2014.</li> <li>• Reviewed 2013 Development Monitoring Report with the Demographic Advisory Committee on February 12, 2014.</li> <li>• Discussed the 2014 Census Training with the Demographic Advisory Committee on February 12, 2014.</li> <li>• Continued tracking 2014 building permits for the Development Monitoring Report.</li> <li>• Continued development of online dashboard for CIM 2040 performance measurement.</li> <li>• Continued geocoding of 2013 employment data.</li> <li>• Met with the Performance Measures workgroup to discuss the online dashboard and Major Activity Centers.</li> </ul>
647	<p><b>REGIONAL GROWTH ISSUES AND OPTIONS</b></p> <p style="text-align: right;"><b>CARL MILLER</b></p> <ul style="list-style-type: none"> <li>• Discussed the Development Tracking Process with the Demographic Advisory Committee on February 12, 2014.</li> <li>• Discussed the Communities in Motion 2045 Population and Employment Forecast schedule with the Demographic Advisory Committee on February 12, 2014.</li> <li>• Updated the Communities in Motion 2040 Development Tracking database.</li> </ul>
653	<p><b>COMMUNICATION AND EDUCATION</b></p> <p style="text-align: right;"><b>AMY LUFT</b></p> <ul style="list-style-type: none"> <li>• Prepared the <i>Keeping Up With COMPASS</i> newsletter.</li> <li>• Updated the COMPASS web site.</li> <li>• Prepared for and hosted COMPASS 101 on February 4, 2014.</li> <li>• Tracked and facilitated issues related to COMPASS and transportation in and with news media. Distributed one news release.</li> <li>• Hosted Chandler Duncan on February 6 - 7, 2014, as part of the COMPASS education series. Mr. Duncan was interviewed for the Idaho Public Television show, Idaho Reports.</li> <li>• Continued preparations for the remainder of the 2014 COMPASS education series; the next speaker is confirmed for May 8 - 9, 2014.</li> <li>• Participated in planning for the Creating Healthy Communities Summit (April 17 - 18, 2014).</li> </ul>
661	<p><b>COMMUNITIES IN MOTION</b></p> <p style="text-align: right;"><b>LIISA ITKONEN</b></p> <ul style="list-style-type: none"> <li>• Presented the draft <i>Communities in Motion 2040</i> plan document to the Leadership Team, the Planning Team, and the COMPASS Board. The Board authorized the release of the draft plan to public comment.</li> <li>• Reviewed the draft plan with the environmental review group on February 20, 2014.</li> <li>• Met with ITD District 3 staff regarding final funding assumptions and to discuss maintenance information on February 21, 2014.</li> <li>• Finalized all preparations for the March 3 - April 27, 2014, public comment period on the draft <i>Communities in Motion 2040</i> plan.</li> <li>• Received applications for CIM 2040 Grant Implementation Program on February 24, 2014, and requested RTAC form subcommittee for evaluating and ranking applications.</li> </ul>



PROGRAM NO.	
685	<p align="center"><b>REGIONAL TRANSPORTATION IMPROVEMENT PROGRAM</b> <b>TONI TISDALE</b></p> <ul style="list-style-type: none"> <li>• Prepared for and hosted the Urban Balancing, FTA Balancing, and TMA Balancing meetings on February 6, 2014.</li> <li>• Began an update process for the TIP Amendment Policy.</li> <li>• Assisted member agencies in the ITD transit and technical assistance application processes.</li> <li>• Met with ACHD staff regarding federal funding training on February 12, 2014.</li> <li>• Presented an amendment in project funding to VRT's Regional Coordination Council on February 18, 2014.</li> <li>• Met with City of Boise staff regarding issues with federal-aid projects on February 21, 2014.</li> <li>• Provided the approved transit priorities to ITD staff for consideration in the rural application process.</li> <li>• Participated in ITD's Division of Transportation Performance "Live Newsletter" providing updates in transit programs on February 26, 2014.</li> </ul>
692	<p align="center"><b>REGIONAL ASSET and RESOURCE MAINTENANCE REPORT</b> <b>DON MATSON</b></p> <ul style="list-style-type: none"> <li>• Continued monitoring of asset management and other maintenance reports.</li> </ul>
693	<p align="center"><b>GRANT RESEARCH AND ASSISTANCE</b> <b>DON MATSON</b></p> <ul style="list-style-type: none"> <li>• Monitored potential grant resources and shared information with interested agencies.</li> <li>• Submitted an application for Round 3 of the Strategic Highway Research Program (SHRP2) Assistance Program for a local freight study, in collaboration with Idaho Transportation Department.</li> <li>• Met with partners on the upcoming Health Impact Project grant.</li> </ul>
701	<p align="center"><b>GENERAL MEMBERSHIP SERVICES</b> <b>CHARLES TRAINOR</b></p> <ul style="list-style-type: none"> <li>• Closed the Request for Cost for the Title VI alternative transportation survey for Ada and Canyon Counties on February 24, 2014.</li> <li>• Participated in the Urban Land Institute workshop <i>Building Healthy Places</i> on February 19, 2014.</li> <li>• Hosted the American Planning Association webinar <i>Managing Complex Relationships in Planning</i> on February 19, 2014, for member agencies and COMPASS staff.</li> <li>• Completed a development review letter of Ten Mile Center for the City of Meridian.</li> <li>• Met with the City of Nampa to review the 2065 population and employment forecasting options and discuss allocation options.</li> <li>• Participated in Idaho Transportation Department and Federal Highway Administration Transportation Performance Management (TPM) Meeting on February 25, 2014.</li> </ul>
702	<p align="center"><b>AIR QUALITY OUTREACH</b> <b>AMY LUFT</b></p> <ul style="list-style-type: none"> <li>• Attended the Air Quality Board meeting on February 24, 2014, to provide an update on the outreach project.</li> <li>• Received final comments on the media kit from the Air Quality Board; finalized media kit and arranged to burn CDs containing the information.</li> <li>• Continued to work with Peppershock Media to produce air quality public service announcements.</li> </ul>

PROGRAM NO.	
703	<p><b>GENERAL PUBLIC SERVICES</b></p> <p style="text-align: right;"><b>CHARLES TRAINOR</b></p> <ul style="list-style-type: none"> <li>• Provided information to the public on demographics, development, funding, and traffic issues.</li> </ul>
705	<p><b>TRANSPORTATION LIAISON SERVICES</b></p> <p style="text-align: right;"><b>MATT STOLL</b></p> <ul style="list-style-type: none"> <li>• Participated in the Caldwell Chamber of Commerce Government Affairs Committee on February 13, 2014.</li> <li>• Attended the Idaho Transportation Board meeting on February 19, 2014.</li> <li>• Met with Boise City Councilmember Clegg on February 3, 2013 and February 5, 2014 to review various issues and coordinate efforts.</li> <li>• Attended the City of Meridian’s “State of the City” address on February 5, 2014.</li> <li>• Attended the City of Eagle’s “State of the City” address on February 11, 2014.</li> <li>• Met with representatives from City of Wilder and Golden Gate Highway District regarding COMPASS membership on February 19, 2014.</li> <li>• Met with Dave Wallace on February 20, 2014 to coordinate COMPASS and ACHD efforts.</li> </ul>
710	<p><b>COMPLETE STREETS</b></p> <p style="text-align: right;"><b>CARL MILLER</b></p> <ul style="list-style-type: none"> <li>• Met with Ada County Highway District to discuss options for reporting Automobile Level of Service.</li> <li>• Met with the City of Nampa to receive bicycle and pedestrian counts.</li> <li>• Reviewed the bicycle estimation model with the University of Idaho.</li> </ul>
720	<p><b>STATE STREET TRANSIT CORRIDOR IMPLEMENTATION</b></p> <p style="text-align: right;"><b>DON MATSON</b></p> <ul style="list-style-type: none"> <li>• No significant activity during February.</li> </ul>
760	<p><b>LEGISLATIVE SERVICES</b></p> <p style="text-align: right;"><b>MATT STOLL</b></p> <ul style="list-style-type: none"> <li>• Participated in relevant activities in support of Board legislative position statements.</li> <li>• Tracked and reported significant activity in federal and state transportation-related legislative issues.</li> <li>• Continued reviewing Moving Ahead for Progress in the 21st Century Act (MAP-21) to determine implications to COMPASS and its membership.</li> <li>• Hosted Mr. Chandler Duncan as he presented to the Idaho House and Senate Transportation Committees on February 6, 2014. Mr. Duncan was in town as a presenter for the COMPASS education series.</li> <li>• Attended the National Association of Regional Councils (NARC) annual conference in Washington, D.C., February 9-11, 2014.</li> <li>• Met with Idaho delegation and staff on February 12, 2014 regarding federal transportation bill reauthorization.</li> </ul>
761	<p><b>BLUE PRINT FOR GOOD GROWTH</b></p> <p style="text-align: right;"><b>CHARLES TRAINOR</b></p> <ul style="list-style-type: none"> <li>• Held a Consortium meeting on February 20, 2014. A progress report outlining the process to track and report on developments was presented to the committee.</li> </ul>

<b>PROGRAM NO.</b>	
<b>801</b>	<p><b>STAFF DEVELOPMENT</b></p> <p style="text-align: right;"><b>MEGAN LARSEN</b></p> <ul style="list-style-type: none"> <li>• Attended Idaho's Annual Conference on Refugees, sponsored by Idaho Office for Refugees in Boise, ID, February 10 - 11, 2014.</li> <li>• Participated in Measuring the Pedestrian Streetscape webinar, presented by America Walks on February 13, 2014.</li> <li>• Participated in Managing Complex Relationships in Planning webinar on February 19, 2014.</li> <li>• Participated in We Are Traffic Creating Robust Bicycle and Pedestrian Count Programs webinar on February 27, 2014.</li> </ul>
<b>820</b>	<p><b>COMMITTEE SUPPORT</b></p> <p style="text-align: right;"><b>MEGAN LARSEN</b></p> <ul style="list-style-type: none"> <li>• Provided staff support to the COMPASS Board of Directors and standing committees.</li> <li>• Provided input to the Executive Director on potential changes to the Public Participation Committee bylaws.</li> </ul>
<b>836</b>	<p><b>REGIONAL TRAVEL DEMAND MODEL</b></p> <p style="text-align: right;"><b>MARYANN WALDINGER</b></p> <ul style="list-style-type: none"> <li>• Continued to provide travel demand forecast information for various projects.</li> <li>• Provided one area of influence model run for a proposed development.</li> <li>• Continued to update inputs for the regional travel demand model update.</li> </ul>
<b>842</b>	<p><b>CONGESTION MANAGEMENT SYSTEM</b></p> <p style="text-align: right;"><b>MARYANN WALDINGER</b></p> <ul style="list-style-type: none"> <li>• Set up 2014 Trav Time software in preparation for 2014 congestion data collection.</li> <li>• Finalized route schedule for data collection.</li> </ul>
<b>860</b>	<p><b>GEOGRAPHIC INFORMATION SYSTEM MAINTENANCE</b></p> <p style="text-align: right;"><b>ERIC ADOLFSON</b></p> <ul style="list-style-type: none"> <li>• Maintained regional geographic data layers.</li> <li>• Created map documents for member agencies and the public.</li> <li>• Orthophotography maintenance: Sold 2 sections of topographic data.</li> <li>• Provided technical support for a variety of COMPASS processes.</li> </ul>
<b>862</b>	<p><b>REGIONAL DATA CENTER</b></p> <p style="text-align: right;"><b>ERIC ADOLFSON</b></p> <ul style="list-style-type: none"> <li>• Began work on the implementation plan for the Regional Data Center.</li> <li>• Conducted kickoff meeting with RDI on February 25<sup>th</sup>.</li> </ul>
<b>991</b>	<p><b>SUPPORT SERVICES LABOR</b></p> <p style="text-align: right;"><b>MEGAN LARSEN</b></p> <ul style="list-style-type: none"> <li>• Oversaw general accounting, administration and personnel.</li> </ul>

T:\FY14\900 Operations\990 Direct Operations Maint\Board\2014 Staff Activity Report\February 2014.doc

# COMPASS BOARD AGENDA ITEM IX-B

Date: March 17, 2014



**COMPASS**  
COMMUNITY PLANNING ASSOCIATION  
of Southwest Idaho

## Topic: Status Report – Current Air Quality Efforts

### Background/Summary:

The information below provides an update on Treasure Valley air quality.

### February Air Quality Monitoring:

The Idaho Department of Environmental Quality reported three days in the Treasure Valley with air quality levels in the moderate category during the month of February 2014.

- Two of the moderate days were attributable to fine particulate matter (PM<sub>2.5</sub>) recorded in Ada County.
- One of the moderate days was attributable to fine particulate matter (PM<sub>2.5</sub>) recorded in both counties.

### YEAR TO DATE SUMMARY

The table below summarizes the number of good, moderate, and unhealthy to hazardous days recorded since January 1, 2005.

	Good	Moderate	Unhealthy to Hazardous	Total
2005	298	65	2	365
2006	273	91	1	365
2007	227	125	12	364
2008	266	99	1	366
2009	277	83	5	365
2010	321	44	0	365
2011	260	99	6	365
2012	283	72	11	366
2013	276	81	8	365
2014	42	15	2	59

Notes: 2008 was a Leap Year hence the extra day. In 2007, one day of data is missing for the month of May.

### Request/Recommendation:

Information only.

### Implication (policy and/or financial):

None.

### More Information:

- 1) For detailed information contact: MaryAnn Waldinger, Principal Planner, at 475-2242 or [mwaldinger@compassidaho.org](mailto:mwaldinger@compassidaho.org)

MW:nb T:\FY14\900 Operations\990 Direct Operations Maint\Board\AQ Updates\AQ Update02-2014.doc

# COMPASS BOARD AGENDA ITEM IX-C

Date: March 17, 2014



**COMPASS**  
COMMUNITY PLANNING ASSOCIATION  
of Southwest Idaho

## **Topic: Status Report – Current Transportation Project Information**

### **Background/Summary:**

The information in Attachment 1 provides a monthly update on transportation trends, issues, and current project status. A running total of transit ridership is provided in Attachment 2.

### **Request/Recommendation:**

For information only.

### **Implication (policy and/or financial):**

There are no policy or financial implications.

### **More Information:**

- 1) Attachment 1 – Status Report – Current Transportation Project Information
- 2) Attachment 2 – Yearly Alternative Transportation Trip Report
- 3) For detailed information contact: Toni Tisdale, Principal Planner, at 475-2238 or [ttisdale@compassidaho.org](mailto:ttisdale@compassidaho.org).

TT:nb T:\FY14\600 Projects\685 TIP\Monthly-Status\140317mmoBdStatus.docx

## Status Report – Current Transportation Project Information

Following is the most recent monthly reported statistics compared to the same month a year ago:

### STATUS OF PUBLIC TRANSPORTATION PROJECTS

<b>Boise Air Terminal</b>	<b>Jan 2014</b>	<b>Jan 2013*</b>	<b>% Change</b>
Monthly Air Passengers (Inbound and Outbound)	203,815	194,779	4.64%
Monthly Air Freight (Inbound and Outbound) (tons)	3,836	3,728	2.90%
<b>Public Transportation Monthly Ridership</b>	<b>Jan 2014</b>	<b>Jan 2013*</b>	<b>% Change</b>
ACHD VanPool (Active Routes)	N/A	100	N/A
ACHD VanPool (Trips)	N/A	24,820	N/A
Valley Regional Transit Boise Urbanized Area Services	112,101	105,668	6.09%
Valley Regional Transit Nampa Urbanized Area Services	**17,685	18,265	-3.18%
<b>Total</b>	N/A	148,753	N/A
<b>Other Public Transportation Reporting Average Hourly Ridership</b>	<b>Jan 2014</b>	<b>Jan 2013*</b>	<b>% Change</b>
Valley Regional Transit Boise Urbanized Area Services	19	18.1	4.97%
Valley Regional Transit Nampa Urbanized Area Services	**21.1	21.1	0.00%

\*There is a possibility that previously reported statistics do not match those in this report due to data finalization.

\*\*Estimated due to lost data during the move to the Happy Day Transfer Center.

### STATUS OF MAJOR PROJECTS

Information as of early March 2014.

<b>Project</b>	<b>Sponsor</b>	<b>Comments*</b>
21 <sup>st</sup> Avenue, Chicago Avenue to Cleveland Boulevard, Caldwell (KN 13052)	Caldwell	This project will widen 21 <sup>st</sup> Avenue from Chicago Avenue to Cleveland Boulevard from a two-lane to five-lane arterial. Work will include sidewalks, traffic signals, and railroad crossings. The concept plan is approved, and the project is now in the final design phase. Construction is expected in FY2016.
Ada County SR2S, VRT – FY2014 (13821) AND City of Caldwell SR2S – FY2014 (14340)	VRT/YMCA	These projects will fund a Safe Routes to Schools director and coordinator to work with elementary and middle schools in the Boise, Meridian, and Caldwell School Districts, as well as children who participate in the YMCA Child Development programs. In fall 2013 and winter 2014, the program promoted and participated in "National Walk to School Day." Educated 4,687 Kindergarten through 8 <sup>th</sup> grade students in bicycle and pedestrian safety, promoted and participated in "Polar Bear Walks" during the winter months, and partnered with Boise Police Department and Boise Bicycle Project in their annual Christmas Kids Bike giveaway, educating over 300 "at risk" students (YMCA considers these students "of promise.")
ADA Ramp Improvements, Nampa (KN 13499)	Nampa	This project will install ADA pedestrian ramps at several locations within the City of Nampa. Construction is scheduled for FY2014.
Alternatives Analysis for Downtown Boise Circulator System, Phase 1 (KN 13343)	Boise	This Discretionary FTA 5309 project will conduct the first phases of an alternatives analysis study for a downtown Boise circulator system. The first steering committee meeting was held February 12, 2014. This meeting provided the necessary direction and input to prepare the purpose and needs statement, and establish goals, objectives, and evaluation criteria long with a discussion of destinations and routes. The Steering Committee will meet again in May 2014.

Project	Sponsor	Comments*
Amity Avenue, Nampa (KN 10541)	Nampa	This project is a Congressional earmark to widen Amity Avenue in the City of Nampa. The construction bid is expected to be released in March 2014.
Biking Walking Path Extension and Pedestrian signal, Caldwell (KN 13485)	Caldwell	This project provides an extension of the existing biking, walking path from the YMCA south adjacent to the Heritage Charter School and then crosses Ustick Road with a high-intensity activated crosswalk signal. The project is scheduled for design in FY2014 and construction in PD.
Bergeson Street Crosswalk, SR2S, ACHD (KN 13040)	<u>ACHD</u>	This Safe Routes to School project will install rectangular rapid flashing beacon on Bergeson Street at the entrance to Liberty Elementary School in Boise. Design is complete, and the project has been bid. Construction is scheduled for summer 2014.
Bogus Basin Road Improvements, ACHD (KN 3789(1))	<u>ACHD</u>	This Federal Lands Access Program project will make improvements to Bogus Basin Road. The project is currently in the design phase, and is scheduled for construction in FY2015.
Boise Bike Share Program, Phase I, VRT	VRT	Project will implement a bike share program in downtown Boise by summer 2014. The Request for Proposal process brought in four proposals. An evaluation committee selected Social Bicycles of New York City as the preferred vendor. Staff is currently working with legal counsel to finalize contract language. The proposal will deploy the full 140 bikes/14 station system with funds currently available. Once the contract is signed, the system is expected to launch in 150 days. A proposal for Title Sponsorship of the program was presented and is awaiting approval.
Bowmont Road, Lynwood to SH-45, Nampa (KN 12898)	Nampa Highway District	Realign Bowmont Road from Lynwood to SH-45. The Nampa Highway District is currently acquiring right-of-way. The right-of-way certificate and final design are expected by May 1, 2014. The plans, specifications, and engineers estimate is expected to be delivered by July 1, 2014. The project is scheduled for construction in FY2016, but could advance if funding becomes available.
Capital Maintenance, ACHD - FY2015 (KN 12363)	ACHD	This project will supplement the local maintenance program. The design consultant is selected. The design state/local agreement was presented to ACHD in December 2013. Construction is scheduled in FY2015.
Capital Maintenance, ACHD - FY2016 (KN 13907)	ACHD	This project will supplement the local maintenance program. Design is scheduled for FY2014 with construction scheduled in FY2016.
Centennial Way Roundabout, Caldwell (KN 13484)	Caldwell	This project will orchestrate an angled intersection of SH-19/Simplot Boulevard, I-84 Business (in two separate legs of a couplet Cleveland Boulevard and Blaine Street) and Simplot Boulevard (a six-leg intersection) into a potential roundabout. The project is scheduled for design in FY2014 and construction in PD.
City of Nampa, SR2S (KN 13043)	Nampa	This Safe Routes to School project will construct a multi-use trail between East Iowa Avenue and East Sherman Avenue to accommodate students attending Sherman Elementary School. Project is awaiting right-of-way acquisition. Construction is scheduled for FY2014.
City of Nampa SR2S - FY2014 and FY2015 (14339)	Nampa	This will fund a Safe Routes to Schools coordinator to work with elementary and middle schools throughout the City of Nampa. This program implements educational and encouragement activities at schools and community-wide events. These funds will cover two years of funding a part-time position and related materials. Funds are available in FY2014 and FY2015.
Colorado Avenue and Holly Street Signal and Pedestrian Improvements, Nampa (KN 13486)	Nampa	This project will install traffic signals and pedestrian-friendly improvements at the intersection of Colorado Avenue and Holly Street in Nampa. Design is currently underway. Construction is scheduled in Preliminary Development.
Deer Flat Regional Bicycle/Pedestrian Plan, Canyon County (KN 2013(2))	Canyon Highway District/ Nampa Highway District	This Federal Land Access Program project will develop a bicycle/pedestrian plan in the Deer Flat Refuge near Lake Lowell in Canyon County. Consultant selection is currently underway. Canyon Highway District expects planning work will begin in April 2014.
Dry Creek Trail, Phase 1, Eagle	Eagle	Project provides a bicycle and pedestrian underpass at SH-44 on the west side of the City of Eagle. It will connect the Dry Creek Pathway and the northeast side of the City of Eagle with the Eagle Island Pathway system. Design is scheduled in FY2014. The State/Local Agreement is expected soon. Construction is scheduled in FY2016.

Project	Sponsor	Comments*
Federal Aid Arterials and Collectors – FY2013 (KN 11581)	ACHD	This project will supplement the local overlay program. Design is complete. Road segments include: Burgeson, Federal Way to Apple Street; Maple Grove, Overland to Barnes; Bergeson, Apple to Holcomb; Apple, Bergeson to Boise; Boise, Law to Holcomb; Law, Boise to Parkcenter; Protest, Federal Way to Boise; Overland, Vista to Columbus; Overland, Columbus to Federal Way; Franklin, Orchard to Roosevelt; Cole, Desert to McGlochlin; Cole, McGlochlin to Victory; Locust Grove, Victory to Peacock; Boise, Broadway to Gekeler. Construction is underway with completion expected by June 4, 2014.
Federal Aid Arterials and Collectors – FY2014 (KN 12050)	ACHD	This project will supplement the local overlay program. Design is approximately 10% complete. Proposed road segments include: Cherry Lane, Ten Mile to Linder; Franklin, Linder to N. Main; Bogus Basin, Hill to Curling; Hill, Gary to N 36 <sup>th</sup> ; Hill Seaman Gulch to Gary; State Street, Veterans Memorial Parkway to N. Clover; Fairview, Main to Locust Grove; Castle, Pierce Park to Hill. The plans, specifications, and engineer's estimate package is expected by May 1, 2014. Construction is expected to begin in summer 2014.
Five Mile Road, Franklin Road to Fairview Avenue (KN 11582)	ACHD	This project will widen Five Mile Road between Franklin Road and Fairview Avenue to five lanes with shoulder, sidewalk, and railroad crossing improvements. Construction is expected to begin in January 2014 with an estimated completion date in October 2014.
Franklin Road, Black Cat Road to Ten Mile Road (KN 12368)	ACHD	This project will widen Franklin Road from two lanes to five lanes from Black Cat Road to Ten Mile Road. Work includes curb, gutter, sidewalks, bicycle facilities, bio-infiltration swales, and reconstructing the intersection at Franklin Road and Black Cat Road. Design is 90% complete with delivery expected by March 2015. Construction is programmed for FY2016.
Garden City West Bridge Pathway Crossing – FY2012 (KN 13512)	Garden City	This multi-jurisdictional project will help fund construction of a 12-foot wide, 180-foot long bicycle-pedestrian bridge across the Boise River between Glenwood Street, Eagle Road, State Street, and Chinden Boulevard, connecting over 30 miles of non-motorized pathways. The project received approval from the State Historic Preservation Office. The updated environmental document is submitted to ITD and awaiting final review. There is some concern regarding the final cost. To accommodate irrigation access, design was altered increasing costs. Construction is scheduled for FY2014.
Greenbelt Extension, Orchard Street, Kuna (14342)	Kuna	This project will provide pedestrian and bicycle facilities on the west side of Orchard Street from Avalon south to the Kuna Greenbelt. Work will include curb, gutter, and sidewalk on the north half up to the end of pavement. The southern portion will include a paved six-foot asphalt pathway. Delivery of the State/Local Agreement is expected soon. Construction is scheduled in FY2015.
Greenbelt, Garden City to Americana Boulevard (KN 13514)	Boise	This project will construct a 12-foot wide paved pathway to fill a 4,100 linear foot gap in the Greenbelt system on the south side of the river between Main Street and Americana Boulevard with connection to Ann Morrison Park. The revised concept plan is expected to be submitted in early March 2014. The archeological draft plan will be submitted for comment soon. The wetland mitigation draft report is currently being revised based on comments received. The environmental plan documents are in progress. Construction is scheduled in FY2015.
Greenbelt Maintenance, Americana To Fairview, Boise (KN 13915)	Boise	Project is for a one-half mile section of the Greenbelt between Americana Boulevard and Fairview Avenue on the north side of the Boise River. The project will remove existing asphalt and base to sub-grade, install base and compact, widen to 12-foot pathway, and form and pour new concrete pathway. Design is underway with construction in FY2015.
Greenbelt Maintenance, Fairview Avenue toward Veteran's Park, Boise (KN 13919)	Boise	Project is a one-half mile section on the Greenbelt from Fairview Avenue toward Veteran's Park on the north side of the river. Project will rebuild the pathway down to the base layer with a new concrete pathway. Design is underway with construction split over FY2016 and FY2017.
Greenbelt Resurfacing, Pioneer Pathway Southwest of River Street, Boise (KN 13914)	Boise	Project will remove existing asphalt and base to sub-grade, install new base, widen to 12-foot pathway. Form and pour concrete pathway (near Bronco Elite). Project is 325-linear feet. Design is underway and construction is scheduled for FY2014.



<b>Project</b>	<b>Sponsor</b>	<b>Comments*</b>
Greenbelt, Eckert Road Underpass, Boise (KN 13913)	Boise	Construction of a Class I bicycle and pedestrian concrete underpass at Eckert Road on the north side of the Boise River. The project will allow bicyclists and pedestrians on the Greenbelt to cross Eckert Road separately from vehicles. Design is underway with construction in Preliminary Development.
Homedale Road Intersection Improvements, Caldwell (13488)	Caldwell	This project will provide intersection safety improvements on Homedale Road at the following locations: Montana Road, Lake Road, Florida Avenue, and Midway Road. Construction is scheduled for FY2014.
High Accident Warning Signs, Canyon Highway District (KN	Canyon Highway District	Install horizontal curve signage in multiple locations throughout Canyon Highway District to increase safety related to lane departures. The state/local agreement was approved by Canyon Highway District on December 4, 2013. Construction is scheduled in FY2015.
I-84, Broadway Avenue to Gowen Road Mainline Widening (KN 13812) AND I-84, Gowen Interchange Reconstruction, Boise (KN 09822)	ITD	This GARVEE project will add a third lane to I-84 between the ramps of Broadway Avenue and Gowen Road Interchanges. The companion project is also a GARVEE project will replace the existing interchange at Exit 57 in Boise with a new traditional interchange. Construction is expected to begin in early March 2014.
I-84, Broadway Avenue Interchange Reconstruction, Boise (KN 09822) AND I-84, Gowen Railroad Bridge Eastbound Lane(KN 12029) AND Westbound Lane (12379), Boise	ITD	This project is a GARVEE project to replace the existing interchange at Exit 54 in Boise with a new Single Point Urban Interchange (SPUI). The companion projects will replace the existing railroad bridges in east Boise near the Broadway interchange. Construction began February 25, 2014.
I-84, Meridian Interchange Reconstruction, Meridian (KN 10939) AND I-84, Meridian Interchange to Five Mile Road (KN 13057)	ITD	This GARVEE project will replace the existing interchange at Exit 44 in Meridian with a new Single Point Urban Interchange (SPUI). The project will also add the fourth lane to I-84 in this area. The companion project will reconstruct the pavement on the outside travel lanes and shoulder in both directions on I-84 between the Meridian Interchange and the Flying Wye. The bid opening is scheduled for March 4, 2014. Construction will be phased, with the west side constructed first. Construction is expected to take 18 to 21 months to complete (by fall 2015).
I-84, Ten Mile Creek Bridge to Meridian Interchange (KN 13845)	ITD	This project was split out of the Meridian Interchange rebuild project to widen the Ten Mile Creek structures under Meridian Road and I-84 during the fall/winter months to reduce possible delays on Meridian Road Interchange construction. Idaho Power began moving power lines and poles for utility work on Meridian Road. The contractor will install a city sewer line on the west side of Meridian Road from Overland Road north to Ten Mile Creek. Work began on December 23, 2013, and is expected to be complete in early spring 2014.
I-84, UPRR East Lateral Canal Bridge, Nampa (KN 12866) AND I-84, Northside Boulevard Underpass, Nampa (KN 12867)	ITD	These are bridge rehabilitation and deck replacement projects in Nampa that were companioned under one contract. Bids were opened September 24, 2013. The projects will begin construction in June 2014.
Intersection Improvements, Canyon Highway District (KN 13489)	Canyon Highway District	Safety Improvements at intersections in Canyon Highway District. Intersections include: Lake Avenue and Orchard Avenue, Middleton Road and Linden Road, Homedale Road and 10th Avenue, Midway Avenue and Lonestar Road, Homedale Road and Indiana Avenue. The concept and environmental are approved. The project is in final design. The plans, specifications, and engineer's estimate package is expected in May 2014, with construction to follow in summer 2014.
Intersection Middleton Road and Flamingo Avenue, Nampa (KN 13502)	Nampa	This project will add a traffic signal at the intersection of Middleton Road and Flamingo Avenue in Nampa. Design in underway. Construction is scheduled for FY2015.
Natures Wood Duck Island Trail Restoration, Ada County	Ada County	This project will make permanent repairs to a portion of the Boise River Greenbelt within the Bethine Church River Trail area. The project is currently in the design phase, and the development of the environmental documents is also underway. Construction is expected in FY2014.

<b>Project</b>	<b>Sponsor</b>	<b>Comments*</b>
Middleton Road and Ustick Roundabout, Caldwell (KN 13487)	Caldwell	This project will improve a four-way stop at the Middleton Road and Ustick Road intersection by building a roundabout to help traffic flow and reduce congestion. The project is scheduled for design in FY2014 and construction in PD.
Pedestrian Signal, South Midland Boulevard, Nampa (14344)	Nampa	This project will place a HAWK pedestrian-activated signal at the Wilson Pathway where it crosses Midland Boulevard. Pedestrian pre-warning signals and thermo crosswalk markings will also be installed to improve safety concerns at the intersection. Design is scheduled in FY2014 with construction in FY2015.
Riverside Road and Lake Shore Drive, Rehabilitation, Canyon County (KN 2013(1))	Canyon Highway District	This Federal Land Access Program project will rehabilitate Riverside Road and Lake Shore Drive near Lake Lowell in Canyon County. The match agreement with FHWA is in place. Construction is scheduled in FY2015.
SH-16, Boise River Bridge and North Stage (KN 12915)	ITD	This is a GARVEE project to construct the piece of the project just south of SH-44, including the Boise River bridge to just south of the Boise River. This is a new alignment, so traffic impacts are minimal. In February 2014, the contractor removed the temporary Eureka Canal crossing and started placing the cast-in-place median barrier across the bridge. The overall project is expected to be complete in August 2014.
SH-16, Intersection SH-44, US 20/26 and Local Roads (KN 12916)	ITD	This is a GARVEE project to construct the intersection of SH-16 and US 20/26 and SH-16 and SH-44. This project will also construct the local roads in the project needed to provide new access. In February 2014, traffic on US 20/26 was shifted to the south, and speed reductions were established. Improvements to the northern half of US 20/26 are underway and anticipated to continue through March 2014. The entire SH-16 project is expected to be complete in August 2014.
SH-19, Corridor Plan	ITD	This is a Corridor Management Plan covering 16.1 miles of SH-19 in Canyon and Owyhee Counties. The Environmental Scan was delivered in April 2013. The Draft Corridor Management Plan is expected to be delivered in FY2015.
SH-21, (Luck Peak) High Bridge to Robie Creek (KN 12354)	ITD	This is a 4.7-mile pavement rehabilitation project (partly in Ada County, but mostly in Boise County). Bids were opened September 10, 2013. Construction is expected to begin in June or July 2014 and finish in September or October 2014.
SH-44 Corridor Preservation (KN 07827)	ITD	This project is a feasibility, access management, construction phasing, and National Environmental Policy Act (NEPA) study only. The current preferred alternative is the existing SH-44 alignment, with the exception of the Middleton area, which is bypassed based on the City's approved comprehensive plan. The project was reduced in scope from an Environmental Impact Statement to an Environmental Assessment. ITD received additional comments from the State Historic Preservation Office regarding the Cultural Report, and is working to address those comments. Traffic counts are updated, and staff is updating other impacted documents as a result of the new traffic counts. Staff is also updating the traffic counts based on comments from FHWA on the US 20/26 Corridor preservation project. The Finding of No Significant Impact is anticipated in winter 2014.
SH-45 Corridor Plan	ITD	The Idaho 45 corridor plan will develop a 10-year plan to identify current and future highway needs on SH-45 on an 18-mile section of SH-45 beginning at SH-78 in Owyhee County and extending to the City of Nampa and the I-84 Business Loop. The Environmental Scan was delivered in April 2013. ITD staff is currently reviewing right-of-way records. The draft Corridor Management Plan is expected to be delivered in FY2015.
SH-45, Deer Flat to I-84B, Nampa (KN 13030)	ITD	This is a 5.5-mile pavement rehabilitation project. Traffic control plans are being developed, and the project is obtaining environmental clearance. The plans, specifications, and engineer's estimate was delivered, and the project is scheduled for construction in FY2015.

Project	Sponsor	Comments*
SH-55 (Eagle Road) and McMillan Road Intersection (KN 13058)	ACHD/ITD	This is a joint intersection improvement project between ACHD and ITD at Eagle Road and McMillan Road. The project will be sponsored, administered, designed, and bid by ACHD. ITD's participation is review and funding. The final design meeting was held August 20, 2013. Right-of-way acquisition is underway. The plans, specifications, and engineer's estimate package is expected in September 2014. Construction is anticipated to begin in FY2015.
SH-55 (Eagle Road), I-84 to Franklin Road Southbound, Meridian (KN 13473)	ITD	This project will widen SH-55 (Eagle Road) to add a third southbound lane from Franklin Road to I-84 and a dedicated right-turn lane to westbound I-84 on-ramp. The utility hearing waiver from CenturyLink was obtained. The plans, specifications, and engineer's estimate package was delivered on February 24, 2014, and the project will be built in summer 2014.
SH-55, Intersection of Karcher Road and Middleton Road, Nampa (KN 12046)	ITD/ Nampa	This project will reconstruct the existing Karcher Road and Middleton Road intersection from just west of the Elijah Drain culvert to the vicinity of Sundance Street, including additional lanes, new traffic signals, improved drainage and on-street lighting. Right-of-way acquisition is ongoing. A public meeting was held on February 13, 2014 with 103 attendees. The final plans, specifications, and engineer's estimate are expected by June 2014.
SH-55, I-84 (Eagle Interchange) to Banks-Lowman Road Access Management Plan (Central Segment)	ITD	This is a Corridor Management Plan covering 33.7 miles of SH 55 in Ada and Boise Counties. The Traffic Impact Study of the proposed Northwest Foothills development was updated. The Environmental Scan is in final review. ITD District 3 collected additional traffic counts in March 2014. The Corridor Management Plan is expected to be released for public comment in March 2014.
SH-69 Corridor Plan	ITD	The SH-69 corridor plan will develop a 10-year plan to identify current and future highway needs on SH-69 beginning at the City of Kuna and extending to the City of Meridian, and the interchange with I-84. A draft Environmental Scan was delivered in January 2014, and is under review. ITD staff anticipates completing the Environmental Scan in February 2014. Completion of the plan is expected in FY2015.
Sidewalk, North Middleton Road, Middleton (KN 14343)	Middleton	This project will install sidewalks along North Middleton Road on the west side; from Triumph Drive south 225-feet to connect to sidewalks existing along Mountain View Subdivision across the street from Mill Creek Elementary School. The engineer completed a site walkthrough and adjoining landowners to discuss irrigation and draining issues. Preliminary Design is underway. Construction is scheduled in FY2015.
Signal Timing Improvements, ACHD (KN 13491)	ACHD	This project will make signal timing improvements for traffic safety at: Federal Way from Protest Road to Gowen Road; Franklin Road, Maple Grove Road to Eagle Road; Overland Road, Cloverdale Road to Overland Park; Overland Road, Meridian Road to Eagle Road. Design is expected to begin in January 2014 with delivery in June 2014. This is an FY2014 project.
Signal Timing Plan Update, ACHD (KN 13955)	ACHD	Update signal timing on six corridor sections to improve mobility and increase safety. Signal timing improvements will occur on sections of Park Center Boulevard, Orchard Road, Curtis Road, Federal Way, State Street, and Ustick Road. The project is a design-only project, and is scheduled for FY2015.
South Cemetery Road, SH-44 to Willow Creek, Middleton	Middleton	Project funds environmental study and preliminary and final designs for a new 0.284-mile roadway segment linking SH-44 and Middleton Road by way of Sawtooth Lake Drive in Middleton. Preliminary Design is underway, and consultants are determining Willow Creek floodway via a field survey and flood maps. Construction is expected in FY2018.
State Street and Collister Drive Intersection, ACHD (KN 13481)	ACHD	This project will make geometric and operational improvements to the intersection at State Street and Collister Drive. Design is scheduled to begin in FY2014. Construction is scheduled for FY2017.
Storm Water Design Guide, ACHD (KN 13819)	ACHD	ACHD hired Brown and Caldwell, and selected an Advisory Workgroup to develop a Green Stormwater Infrastructure (GSI) guidebook. The GSI guidebook will provide direction on alternative stormwater treatments for Ada County. Treatments in the guidebook will be considered and used on ACHD's road and pedestrian projects in the future. Guide development will occur in FY2014.

Project	Sponsor	Comments*
Swan Falls Road Shoulder Widening, Kuna – FY2012 (KN 13518)	ACHD	This project will construct three miles of five-foot shoulders along Swan Falls Road from Poen Road to Initial Point to provide safe walking, bicycling and vehicle pull-offs with funds through the National Scenic Byways Program. Design is 15% complete with estimated delivery in September 2014. Construction is scheduled for FY2014, but will likely delay to FY2015.
Three Cities Intelligent Transportation System (KN 08821)	ACHD	ACHD in cooperation with FHWA, is designing operational improvements, such as closed circuit television cameras, speed detectors, and adaptive signal technology to SH-55 (Eagle Road), SH-44 (State Street), Glenwood Street, and US 20/26 (Chinden Boulevard). Design is 65% complete with estimated delivery in February 2014. Construction is expected to begin in early FY2014.
Transit – ADA Bus Stop Improvements (KN 12222)	VRT	This is a Stimulus project. This project is complete. Overall 810 sites were investigated, 433 sites were improved. 44 shelters were installed, and a bus lane at the main College of Western Idaho campus was constructed.
Transit – Associated Capital Improvements, Nampa – FY2013 (KN 12760)	Nampa	This project includes bicycle and pedestrian improvements at three locations near transit routes in Nampa. Construction is scheduled for FY2014.
Transit – Bicycle and Pedestrian Infrastructure, Nampa – FY2014 (KN 13711)	Nampa	This project will provide bicycle and pedestrian infrastructure to enlarge access and connectivity by connecting multiple neighborhoods in southeast and north Nampa to the downtown area and to one of the three transit transfer stations in Nampa. Construction is scheduled for FY2014.
US 20/26 Corridor Preservation (KN 07826)	ITD	This project is a feasibility, access management, construction phasing, and National Environmental Policy Act (NEPA) study only. The Access Management Plan was adopted by the COMPASS Board in December 2008. Traffic counts are updated and ITD staff is working to update other impacted documents as a result of the new traffic counts. A finding of no significant impact is anticipated in winter 2014.
US 20/26 Broadway Bridge, Boise (KN 11588)	ITD	A new bridge will be constructed to replace the existing structure on US 20/26 over the Boise River in downtown Boise, including reconstruction/widening of Broadway Avenue between Myrtle Street and University Avenue and rehabilitation of the existing pavement between Front Street and Myrtle Street. Environmental efforts are underway. The traffic analysis is complete. The roadway, greenbelt, and drainage plans are being developed. The project is scheduled to deliver the plans, specifications, and engineering estimates by October 1, 2015, with construction beginning in late 2015, and continuing through late 2016.
US 20/26, Oregon State Line to I-84, Corridor Study	ITD	This is a Corridor Management Plan covering 22.1 miles of US 20/26 in Canyon County. The Environmental Scan was completed in January 2013. Staff is entering right-of-way into the mapping system. The draft Corridor Management Plan is expected to be delivered in FY2015.
US-95 Access Management Plan (South Segment)	ITD	This is a Corridor Management Plan covering 50.8 miles of US-95 in Owyhee and Canyon Counties (south). A draft Environmental Scan was delivered in December 2013, and is under final review. The draft Corridor Management Plan is expected to be ready for internal review by the end of May 2014.
US-95, Junction US 20/26 Union Pacific Railroad Overpass (KN 12886)	ITD	This is a bridge replacement project. Roadway and bridge design is underway. Railroad coordination is progressing. The project is scheduled to advance to the plans, specifications, and engineer's estimate stage in June 2014.
Ustick Road, Locust Grove to Leslie Way, Meridian (KN RD205-05)	ACHD	This project will widen the roadway from two lanes to five lanes with curb, gutter, sidewalks and bike lanes, per the 2009 CIP update and North Meridian Plan. The Locust Grove intersection must be constructed before or concurrently with this project. Design and right-of-way acquisition are complete. Construction was scheduled to begin January 6, 2014.

\*Project updates were not received from the Cities of Caldwell and Middleton, and some projects from the City of Boise and ACHD.

CY2014	Jan	Feb	Mar	Apr	May	Jun	Jul	Aug	Sept	Oct	Nov	Dec	Total -Jan	To Date % Change 13-14
ACHD Vanpool (Trips)	N/A												N/A	N/A
VRT Boise Urbanized	112,101												112,101	6.09%
VRT Nampa Urbanized	17,685												17,685	-3.18%

CY2013	Jan	Feb	Mar	Apr	May	Jun	Jul	Aug	Sept	Oct	Nov	Dec	Total -Jan	To Date % Change 12-13
ACHD Vanpool (Trips)	24,820	22,491	23,554	24,362	23,031	21,357	22,832	23,272	22,087	23,366	21,018	21,040	24,820	6.40%
VRT Boise Urbanized	105,668	118,669	112,729	117,867	111,770	91,450	99,098	94,982	102,585	119,175	104,531	101,757	105,668	9.96%
VRT Nampa Urbanized	18,265	19,685	19,112	21,111	18,199	15,513	15,816	18,003	21,988	21,029	14,329	15,251	18,265	-1.33%

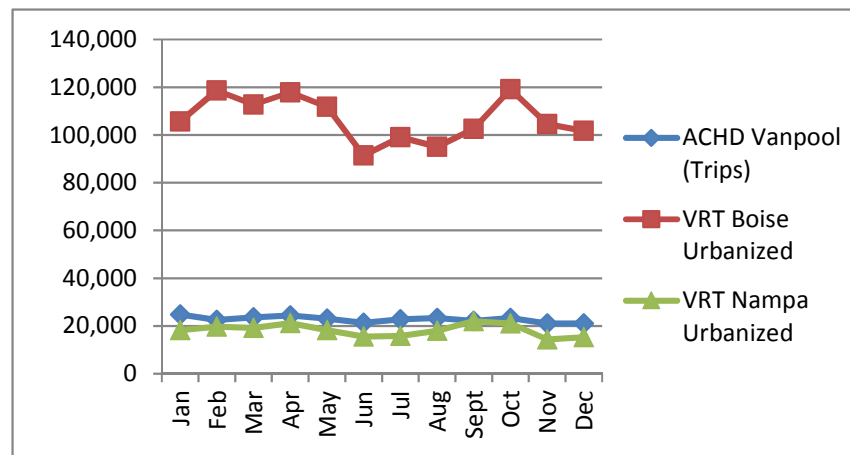
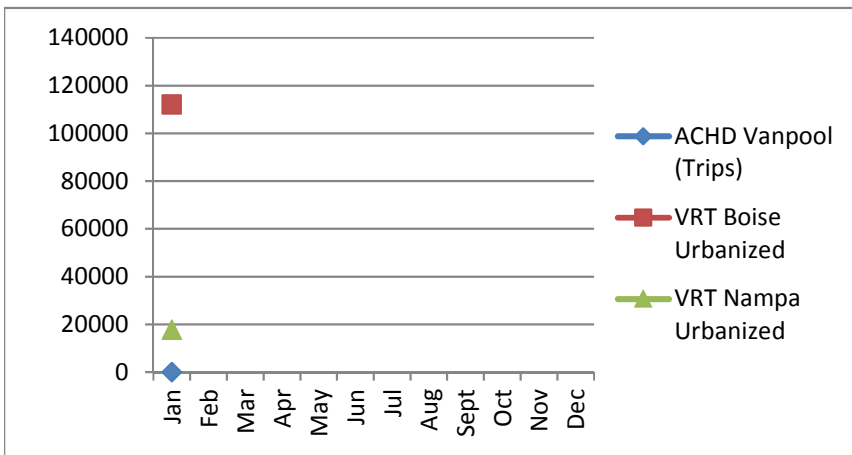
CY2012	Jan	Feb	Mar	Apr	May	Jun	Jul	Aug	Sept	Oct	Nov	Dec	Total - Jan	To Date % Change 11-12
ACHD Vanpool (Trips)	23,327	22,989	23,821	23,245	24,007	22,096	22,500	24,676	21,216	24,475	22,207	20,247	23,327	15.23%
VRT Boise Urbanized	96,100	119,064	106,068	118,989	116,421	92,998	94,139	102,614	105,805	111,715	110,719	102,009	96,100	-5.73%
VRT Nampa Urbanized	18,511	16,167	18,379	19,645	14,427	15,501	15,068	17,117	20,330	23,101	19,687	16,368	18,511	20.48%

CY2011	Jan	Feb	Mar	Apr	May	Jun	Jul	Aug	Sept	Oct	Nov	Dec	Total -Jan	To Date % Change 10-11
ACHD Vanpool (Trips)	20,243	22,046	22,121	20,936	20,169	21,510	19,336	23,097	20,347	19,749	22,240	20,832	20,243	0.89%
VRT Boise Urbanized	101,936	101,144	117,704	108,108	111,366	106,275	93,834	115,761	114,726	114,484	110,885	103,464	101,936	-1.70%
VRT Nampa Urbanized	15,364	16,508	18,362	17,393	16,347	13,325	15,186	19,370	20,998	20,215	18,235	15,202	15,364	-0.66%

CY2010	Jan	Feb	Mar	Apr	May	Jun	Jul	Aug	Sept	Oct	Nov	Dec	Total - Jan	To Date % Change 09-10
ACHD Vanpool (Trips)	20,065	18,942	22,466	20,626	17,675	20,417	18,630	19,046	18,790	18,596	18,036	19,160	20,065	-5.98%
VRT Boise Urbanized	103,704	106,299	120,174	114,145	99,610	97,152	91,474	95,262	98,048	103,166	93,466	94,292	103,704	-1.06%
VRT Nampa Urbanized	15,466	17,515	18,362	21,100	16,136	17,265	16,151	18,143	20,607	23,260	15,866	13,973	15,466	-0.80%

2014

2013



DEMOGRAPHIC ADVISORY COMMITTEE

ITEM IX-D

Attendance List of Members

Member Agency/Name	Jan '14 No Mtg	Feb '14	Mar '14	Apr '14	May '14	June '14	July '14	Aug '14	Sept '14	Oct '14	Nov '14	Dec '14	TOTAL
ACCHD/K. Knapp													
AACHD/ C. Little/J. Lowe		1											
Ada County/B.Danielson		1											
BSU/M. Fragkias													
CCDC/Vacant													
Canyon Co. Dev. Services /J. Almeida/D. Root/P. Nilsson		1											
City of Boise/ J. Tomlinson/B. Eggleston		1											
City of Caldwell/B. Billingsley		1											
City of Eagle/ N. Baird Spencer		1											
City of Garden City/J. Thornborrow													
City of Kuna/W. Howell		1											
City of Meridian/ B. McClure		1											
City of Middleton/ D. Taylor													
City of Nampa/ N. Holm		1											
City of Star/ N. Mitchell													
IDEQ/ D. Luft													
ITD / M. Wasdahl		1											
Public Participation Committee/J. Ross		1											
Valley Regional Transit/ J. Swain													
<b>Ex officio Members</b>													
Chamber of Commerce - Ada County/M.Tate		1											
Chamber of Commerce- Canyon Co./T. Kasper													
COMPASS/C. Miller		1											
Development Community - Ada County/C.Findlay													
Major Utilities / B. Snow/B. Defenbach													
Development Community - Canyon County/Vacant													

**REGIONAL TECHNICAL ADVISORY COMMITTEE**

**Attendance List of Members**

<u>Member Agency/Name</u>	Jan '14	Feb '14	Mar '14	Apr '14	May '14	June '14	July '14	Aug '14	Sept '14	Oct '14	Nov '14	Dec '14	TOTAL
<b>General Members</b>													
ACHD/S. Anderson/T.Ferch/R.Head	1	1											2
Ada County /R. Beck/M. Leatherman	1	1											2
BSU/N. Nimmmons	1	1											2
Canyon County / J. Almeida, D. Root, P. Nilsson		1											1
Canyon Highway District #4/C. Hopper	1	1											2
City of Boise/ D. Fluke/ K. Lacey/K. Gallagher	1	1											2
City of Caldwell/R. MacDonald		1											1
City of Eagle/N. Baird Spencer		1											1
City of Garden City/J. Thornborrow													0
City of Kuna/W. Howell	1	1											2
City of Meridian/J. Lucas	1	1											2
City of Middleton/D. Taylor													0
City of Nampa/C. Bowman		1											1
City of Parma/B. Flowers													0
City of Star/N. Mitchell													0
IDEQ/M. Toole													0
ITD/M. Garz													0
Nampa Highway District #1/E. Shannon	1	1											8
Public Participation Committee/D. Smith		1											1
Valley Regional Transit/Jordan Swain	1	1											2
<b>Ex officio Members</b>													
Central District Health/R. Howarth	1												1
COMPASS/D. Matson	1	1											2
Governor's Office/D. Hensley													0

**TRANSPORTATION MODEL ADVISORY COMMITTEE**

**Attendance List of Members**

<u>Member Agency/Name</u>	Jan '14	Feb '14 No Mtg	Mar '14	April '14	May '14	June '14	July '14	Aug '14	Sept '14	Oct '14	Nov '14	Dec '14	TOTAL
<b>General Members</b>													
ACHD/ <i>S. Martin , A. Pillai</i>	1												1
Ada County Develoment Services/ <i>M. Basham</i>													0
Canyon County/ <i>J. Almeida, P. Nilsson</i>	1												1
Canyon Highway District/ <i>No. 4/T. Richard</i>													0
City of Boise/ <i>K. Gallagher</i>	1												1
City of Meridian/ <i>A. Petersen</i>	1												1
City of Nampa/ <i>/C. Bowman/J. Barnes</i>	1												1
IDEQ/ <i>D. Luft</i>	1												1
ITD/ <i>K. Sablan &amp; D. Szplett</i>	1												1
Nampa Highway District #1/ <i>E. Shannon</i>													
Public Participation Committee/ <i>J. Madsen</i>													0
Valley Regional Transit/ <i>J. Swain</i>													0
<b>Appointed Transportation/Land Use/Air Quality Professionals</b>													
<i>Vern Brewer, Holladay Engineering</i>	1												1
<i>Stephen Lewis, Keller Associates</i>	1												1
<i>Jim Pline, Pline Engineering</i>	1												1
<i>Jay Witt , URS Washington Division</i>	1												1
<b>Ex officio Members</b>													
COMPASS/ <i>M. Waldinger</i>	1												1



**REGIONAL GEOGRAPHIC ADVISORY COMMITTEE**

**Attendance List of Members**

<b>Member Agency/Name</b>	<b>Jan '14 No Mtg</b>	<b>Feb '14</b>	<b>Mar '14</b>	<b>Apr '14</b>	<b>May '14</b>	<b>Jun '14</b>	<b>July '14</b>	<b>Aug '14</b>	<b>Sept '14</b>	<b>Oct '14</b>	<b>Nov '14</b>	<b>Dec '14</b>	<b>TOTAL</b>
<b>General Members</b>													
Ada County Assessors/A .Kawalec		1											1
Ada County Development Services/M. Basham		1											
Ada County Highway District/C. Spencer		1											1
Ada County Sheriff Office/T. Tyson		1											
Canyon County Development Services/S. Higuera		1											1
Canyon Highway District No. 4/K. Knapp													
Canyon County Sheriff Office/F. Smith		1											0
City of Boise/J. Hetherington		1											1
City of Caldwell/D. Marston		1											1
City of Eagle/R. Dodge		1											1
City of Garden City/E.Akin													0
City of Kuna/M. Borzick													0
City of Meridian/R. Jack		1											1
City of Nampa/C. Tarter		1											1
ITD/B. Lacabanne													0
Nampa Highway Distr. #1/Eric Shannon													0
Public Participation Committee/M. Gaddi/K. Watkins													0
<b>Ex officio Members</b>													
COMPASS/E. Adolfsen		1											1



**COMPASS**  
COMMUNITY PLANNING ASSOCIATION  
of Southwest Idaho

## Memorandum

**To:** Matt Stoll, Executive Director  
**From:** Toni Tisdale, Principal Planner  
**Date:** March 5, 2014  
**Re:** **Request for Approval of Administrative Modification #4 for the FY2014-2018 Regional Transportation Improvement Program**

### **ACTION REQUESTED:**

Approval of Administrative Modification #4 for the FY2014-2018 Regional Transportation Improvement Program (TIP).

### **BACKGROUND:**

Modifications are needed based on Board action to move funds from one COMPASS project to another. Modifications are also needed to projects managed by ITD and the Local Highway Technical Assistance Council based on changes made since October 1, 2013.

### **STATUS:**

Per COMPASS Board action January 27, 2014:

- **Household Travel Survey (09827)** – Decrease preliminary engineering consultant by \$51,184 to use remaining funds at project closing. Move funds to KN 12372.
- **COMPASS Planning – FY2014 (12372)** – Increase preliminary engineering consulting by \$51,184 to offset projects currently funded with local funds. Funds from KN 09827.

Per COMPASS staff review, February 7, 2014 (all changes based on ITD Project Tracking report):

- **I-84, Broadway Avenue Interchange, Boise (09821)** – Changes span multiple funding sources for a total increase of \$8,723,000. The rail projects (KN 12029 and 12379) were merged into this project.
- **I-84, Gowen Road Interchange (09822)** – Changes span multiple funding sources for a total decrease of \$125,000.
- **I-84, Meridian Road Interchange, Meridian (10939)** – Changes span multiple funding sources for a total decrease of \$4,812,000.
- **SH-16, SH-44 (State Street) to US 20/26 (Chinden Boulevard) River Crossing (11236)** – Changes span multiple funding sources for a total increase of \$830,000.
- **US 20/26, Broadway Bridge, Boise (11588)** – Changes span multiple funding sources for a total increase of \$2,600,000.

00 N. East 2nd Street, Suite 200

Meridian, ID 83642

P. 208.855.2558

F. 208.855.2559

www.compassidaho.org

- **I-84, Gowen Railroad Bridge Eastbound, Boise (12029)** – Merge project into KN 09821.
- **South Orchard Access Road, Railroad Crossing, Ada County (12360)** – Add \$55,000 to construction.
- **I-84, Gowen Railroad Bridge Westbound, Boise (12379)** – Merge project into KN 09821.
- **Bowmont Road, Lynwood to SH-45, Nampa (12898)** – Increase preliminary engineering consultant by \$13,000, remove \$1,020,000 in right-of-way, and increase utilities by \$15,000.
- **10<sup>th</sup> Avenue Bridge, Caldwell (13055)** – Add \$63,000 to preliminary engineering consultant.
- **I-84, Meridian Interchange to Five Mile Road (13057)** – Increase construction engineering by \$927,000 and construction by \$4,149,000.
- **Micro Seals, SH-55 (Eagle Road), I-84 to SH-44 – FY2015 (13466)** – Add \$27,000 in preliminary engineering consultant.
- **Intersection Improvements, Canyon Highway District (13489)** – Add \$24,000 to preliminary engineering consultant.
- **I-84, Broadway Interchange to Gowen Interchange, Boise (13812)** – Merge project into KN 09822.
- **US 95, Anderson Corner Road Improvements, Canyon County (13836)** – Changes span multiple funding sources for a total decrease of \$225,000.
- **I-84, Ten Mile Creek Bridge to Meridian Interchange (13845)** – Changes span multiple funding sources for a total increase of \$444,000.
- **I-84, Garrity Road Eastbound On-Ramp, Nampa (13934)** – Decrease preliminary engineering by \$26,000 and add \$61,000 in preliminary engineering consultant.
- **Sidewalk, North Middleton Road, Middleton (14343)** – Changes span multiple funding sources for a total shift of \$3,000 from federal funds to local participating.

Details of the changes are provided in Attachment 1.

**Approval:**

**All changes for Administrative Modification #4, as provided in this memorandum and detailed on Attachment 1, are approved as of March 4, 2014.**

---

**Matthew J. Stoll, Executive Director  
Community Planning Association**

Attachment (1)  
pc: 685.03

TT:nb T:\FY14\600 Projects\685 TIP\FY1418 TIP\140304AdminMod4.docx

Administrative Modification #4  
 FY2014-2018 Regional Transportation Improvement Program  
 Per COMPASS Board January 27, 2014

Key No	Project	Scheduled Costs (including Match) (costs in \$1,000)							
		Phase	2014	2015	2016	2017	2018	PD	SUM
09827	Household Travel Survey	PE							0
		PC	0 -51						0 -51
	Funding Source: STP-TMA  Conduct a study to collect household travel characteristics to update and expand the COMPASS travel demand model. Data will be collected in the <i>Communities in Motion</i> six-county region.	RW							0
		UT							0
		CE							0
		CN							0
		<b>Sum</b>	0 -51	0	0	0	0	0	0 -51
	Decrease PC by \$51,184 from cost savings at close-out. Move to KN 12372.								
12372	COMPASS Planning - FY2014	PE							0
		PC	331 382						331 382
	Funding Source: STP-TMA  Assist COMPASS in meeting federal transportation planning responsibilities.	RW							0
		UT							0
		CE							0
		CN							0
		<b>Sum</b>	331 382	0	0	0	0	0	331 382
	Increase PC by \$51,184 to offset projects currently funded with local funds. Funds from KN 09827.								

Per COMPASS Staff Review of ITD Changes, as of February 7, 2014

Key No	Project	Scheduled Costs (including Match) (costs in \$1,000)							
		Phase	2014	2015	2016	2017	2018	PD	SUM
09821	I-84, Broadway Avenue Interchange, Boise	PE							0
		PC							0
	Funding Source: Bridge Restoration  Redesign and rebuild interchange. <u>Includes widening the railroad bridge.</u>	RW							0
		UT							0
		CE							0
		CN	0						0
		<b>Sum</b>	2326						2326

Key No	Project	Scheduled Costs (including Match) (costs in \$1,000)							
		Phase	2014	2015	2016	2017	2018	PD	SUM
	Add bridge restoration fund source per ITD reports. Add language to description. Funds from KN 12029 and 12379.	Sum	0 2326	0	0	0	0	0	0 2326
09821	I-84, Broadway Avenue Interchange, Boise	PE							0
		PC	0 -580						0 -580
	Funding Source: Expansion  Same as above.  Remove funds from expansion fund source and de-obligate \$580,000 from PC per ITD reports.	RW							0
		UT							0
		CE							0
		CN	5305 0						5305 0
		Sum	5305 -580	0	0	0	0	0	5305 -580
09821	I-84, Broadway Avenue Interchange, Boise	PE							0
		PC							0
	Funding Source: FY2012 GARVEE  Same as above.  Add \$3,530,000 to CE and increase CN by \$8,752,000 and per ITD reports.	RW							0
		UT							0
		CE	0 3530						0 3530
		CN	22938 31690						22938 31690
		Sum	22938 35220	0	0	0	0	0	22938 35220
09822	I-84, Gowen Road Interchange, Boise	PE							0
		PC	0 -400						0 -400
	Funding Source: Expansion  Redesign and rebuild interchange. Project includes widening I-84 from Broadway Interchange to the Gowen Interchange.  De-obligate \$400,000 from PC and increase CN by \$1,412,000 per ITD reports.	RW							0
		UT							0
		CE							0
		CN	4666 6078						4666 6078
		Sum	4666 5678	0	0	0	0	0	4666 5678
09822	I-84, Gowen Road Interchange, Boise	PE							0
		PC							0
	Funding Source: FY2011 GARVEE  Same as above.	RW							0
		UT							0
		CE							0

Key No	Project	Scheduled Costs (including Match) (costs in \$1,000)							
		Phase	2014	2015	2016	2017	2018	PD	SUM
	Add \$2,600,000 in CN in FY2011 GARVEE funds per ITD reports.	CN	0 2600						0 2600
		Sum	0 2600	0	0	0	0	0	0 2600
09822	I-84, Gowen Road Interchange, Boise	PE							0
		PC							0
	Funding Source: FY2012 GARVEE	RW							0
		UT							0
	Same as above. Add \$2,443,000 in CE funds and decrease CN by \$6,275,000 per ITD reports.	CE	0 2443						0 2443
		CN	24000 17725						24000 17725
		Sum	24000 20168	0	0	0	0	0	24000 20168
09822	I-84, Gowen Road Interchange, Boise	PE							0
		PC							0
	Funding Source: Non-Participating	RW							0
		UT							0
	Same as above. Add \$95,000 in CN in non-participating funds per ITD reports.	CE							0
		CN	0 95						0 95
		Sum	0 95	0	0	0	0	0	0 95
10939	I-84, Meridian Road Interchange, Meridian	PE							0
		PC							0
	Funding Source: Expansion	RW							0
		UT							0
	Redesign and rebuild interchange. Increase CN by \$5,305,000 per ITD reports.	CE	13						13
		CN	7000 12305						7000 12305
		Sum	7013 12318	0	0	0	0	0	7013 12318
10939	I-84, Meridian Road Interchange, Meridian	PE							0
		PC							0
	Funding Source: FY2012 GARVEE	RW							0
		UT	0 400						0 400
	Same as above. Add \$400,000 to utilities and decrease CN by \$10,517,000 per ITD reports.	CE							0
		CN	36000 25483						36000 25483
		Sum	36000 25883	0	0	0	0	0	36000 25883
11236	SH-16, SH-44 (State	PE						43	0

Key No	Project	Scheduled Costs (including Match) (costs in \$1,000)							
		Phase	2014	2015	2016	2017	2018	PD	SUM
	Street) to US 20/26 (Chinden Boulevard) River Crossing	PC							0
	Funding Source: Expansion	RW	0 830						0 830
	Project will construct 2.2 miles of four-lane divided highway with a new Boise River crossing. The bulk of the project funding was in previous years.  Add \$830,000 in RW funds and decrease CN by \$2,200,000 per ITD reports.	UT							0
		CE							0
		CN	3924 1724						3924 1724
		<b>Sum</b>	3924 2554	0	0	0	0	0	3924 2554
<b>11236</b>	SH-16, SH-44 (State Street) to US 20/26 (Chinden Boulevard) River Crossing	PE							0
Funding Source: FY2012 GARVEE  Same as above.  Add \$2,200,000 in ROW funds in FY2012 GARVEE funds per ITD reports.	PC								0
	RW	0 2200							0 2200
	UT								0
	CE								0
	CN								0
	<b>Sum</b>	0 2200	0	0	0	0	0	0	0 2200
<b>11588</b>	US 20/26, Broadway Bridge, Boise	PE							0
Funding Source: Restoration  Rebuild the Broadway Bridge including pedestrian facilities. Expand to a six-lane section.  Add \$1,000,000 in both PC and ROW per ITD reports.	PC	0 1000							0 1000
	RW	0 1000							0 1000
	UT								0
	CE								0
	CN		5046						5046
	<b>Sum</b>	0 2000	5046	0	0	0	0	0	5046 7046
<b>11588</b>	US 20/26, Broadway Bridge, Boise	PE	0 260						0 260
Funding Source: Bridge Restoration  Same as above.  Add \$260,000 to PE and \$340,000 to PC per ITD reports.	PC	0 340							0 340
	RW								0
	UT								0
	CE		1063						1063
	CN		10141						10141
	<b>Sum</b>	0 600	11204	0	0	0	0	0	11204 11804

Key No	Project	Scheduled Costs (including Match) (costs in \$1,000)							
		Phase	2014	2015	2016	2017	2018	PD	SUM
12029	I-84, Gowen Railroad Bridge Eastbound, Boise	PE							0
		PC							0
	Funding Source: Bridge Replace eastbound section of the Gowen Railroad bridge at I-84 in Boise.  Remove project and move work and funds to KN 09821 per ITD reports.	RW							0
		UT							0
		CE	<del>155</del> 0						<del>155</del> 0
		CN	<del>1008</del> 0						<del>1008</del> 0
		<b>Sum</b>	<del>1163</del> 0	0	0	0	0	0	<del>1163</del> 0
12360	South Orchard Access Road, Railroad Crossing, Ada County	PE							0
		PC							0
	Funding Source: Safety - SAFETEA-LU Rail Add a railroad gate and signal at the South Orchard Access Road.  Add \$55,000 to CN per ITD reports.	RW							0
		UT							0
		CE	0						250
		CN	55	250					305
		<b>Sum</b>	55	250	0	0	0	0	305
12379	I-84, Gowen Railroad Bridge Westbound, Boise	PE							0
		PC							0
	Funding Source: Bridge Replace westbound section of the Gowen Railroad bridge at I-84 in Boise.  Remove project and move work and funds to KN 09821 per ITD reports.	RW							0
		UT							0
		CE	<del>155</del> 0						<del>155</del> 0
		CN	<del>1008</del> 0						<del>1008</del> 0
		<b>Sum</b>	<del>1163</del> 0	0	0	0	0	0	<del>1163</del> 0
12898	Bowmont Road, Lynwood to SH-45, Nampa	PE							0
		PC	0 13						13
	Funding Source: STP-R Realign Bowmont Road from Lynwood to SH-45.  Add \$13,000 in PC and remove ROW funds per ITD reports. Add \$15,000 in UT per LHTAC on 2/25/14.	RW	<del>1020</del> 0						<del>1020</del> 0
		UT	0 15						15
		CE			1420				1420
		CN			2222				2222
		<b>Sum</b>	<del>1020</del> 28	0	3642	0	0	0	<del>4662</del> 3670



Key No	Project	Scheduled Costs (including Match) (costs in \$1,000)							
		Phase	2014	2015	2016	2017	2018	PD	SUM
13055	10th Avenue Bridge, Caldwell	PE							0
		PC	0 63						0 63
	Funding Source: Bridge (Local)	RW							0
	Replace bridge at 10th Avenue in Caldwell.  Add \$63,000 in PC funds per ITD reports.	UT							0
		CE				222			222
		CN					1117		1117
		<b>Sum</b>	0 63	0	0	1339	0	0	1339 1402
	13057	I-84, Meridian Interchange to Five Mile Road	PE						
PC									0
Funding Source: Restoration		RW							0
Realign and rebuild I-84 from the Meridian Interchange to Five Mile Road. Project includes adding a water retention pond for Wye Interchange runoff.  Increase CE by \$927,000 and CN by \$4,149,000 per ITD reports.		UT							0
		CE	1050 1977						1050 1977
		CN	20219 24368						20219 24368
		<b>Sum</b>	21269 26345	0	0	0	0	0	21269 26345
13466		Micro Seals, SH-55 (Eagle Road), I-84 to SH-44 - FY2015	PE						
	PC		0 27						0 27
	Funding Source: Pavement Preservation	RW							0
	Preventive maintenance (seal coats) on SH-55 (Eagle Road).  Add \$27,000 in PC per ITD reports.	UT							0
		CE		174					174
		CN		1732					1732
		<b>Sum</b>	0 27	1906	0	0	0	0	1906 1933
	13489	Intersection Improvements, Canyon Highway District	PE						
PC			0 24						0 24
Funding Source: HSIP (Local)		RW							0
Safety Improvements at intersections in Canyon Highway District. Intersections include:		UT							0
		CE	60						60
		CN	356						356

Key No	Project	Scheduled Costs (including Match) (costs in \$1,000)							
		Phase	2014	2015	2016	2017	2018	PD	SUM
	Lake Avenue and Orchard Avenue; Middleton Road and Linden Road; Homedale Road and 10th Avenue; Midway Avenue and Lonestar Road; Homedale Road and Indiana Avenue.  Add \$24,000 to PC per ITD reports.	Sum	416 440	0	0	0	0	0	416 440
13812	I-84, Broadway Interchange to Gowen Interchange, Boise	PE							0
		PC							0
	Funding Source: Expansion  Construct a new northbound right-turn lane onto Anderson Corner Road and extend southbound acceleration lane by one-quarter mile.  Remove project and move work and funds to KN 09822.	RW							0
		UT							0
		CE	94 0						94 0
		CN	1318 0						1318 0
		Sum	1412 0	0	0	0	0	0	1412 0
13836	US 95, Anderson Corner Road Improvements, Canyon County	PE							0
		PC							0
	Funding Source: Board Unallocated  Construct a new northbound right-turn lane onto Anderson Corner Road and extend southbound acceleration lane by one-quarter mile.  Decrease CN by \$99,000 per ITD reports.	RW							0
		UT							0
		CE							0
		CN	350 251						350 251
		Sum	350 251	0	0	0	0	0	350 251
13836	US 95, Anderson Corner Road Improvements, Canyon County	PE							0
		PC							0
	Funding Source: Local Participating  Same as above.  Remove local participating funds per ITD reports.	RW							0
		UT							0
		CE							0
		CN	150 0						150 0
		Sum	150 0	0	0	0	0	0	150 0

Key No	Project	Scheduled Costs (including Match) (costs in \$1,000)							
		Phase	2014	2015	2016	2017	2018	PD	SUM
13836	US 95, Anderson Corner Road Improvements, Canyon County	PE							0
		PC							0
	Funding Source: State  Same as above.  Add \$24,000 in CE in state funds per ITD reports.	RW							0
		UT							0
		CE	0 24						0 24
		CN							0
		<b>Sum</b>	0 24	0	0	0	0	0	0 24
13845	I-84, Ten Mile Creek Bridge to Meridian Interchange	PE							0
		PC							0
	Funding Source: FY2008 GARVEE  This project was split out of the Meridian Interchange rebuild project to widen the Ten Mile Creek structures under Meridian Road and I-84 during the fall/winter months to reduce possible delays on Meridian Road Interchange construction.  Add \$81,000 in CE in FY2008 funds per ITD reports.	RW							0
		UT							0
		CE	0 81						0 81
		CN							0
		<b>Sum</b>	0 81	0	0	0	0	0	0 81
13845	I-84, Ten Mile Creek Bridge to Meridian Interchange	PE							0
		PC							0
	Funding Source: FY2012 GARVEE  Same as above.  Decrease UT by \$125,000 and increase CE by \$30,000 and CN by \$458,000 per ITD reports.	RW							0
		UT	174 49						174 49
		CE	70 100						70 100
		CN	702 1160						702 1160
		<b>Sum</b>	946 1309	0	0	0	0	0	946 1309
13934	I-84, Garrity Road Eastbound On-Ramp, Nampa	PE	51 25						51 25
		PC							0
	Funding Source: Restoration  Project will provide minor widening and re-	RW	0 61						0 61
		UT							0
		CE			50				50

Key No	Project	Scheduled Costs (including Match) (costs in \$1,000)							
		Phase	2014	2015	2016	2017	2018	PD	SUM
	striping to enable two on-ramp lanes to I-84 from northbound Garrity Road in Nampa.  Decrease PE by \$26,000 and add \$61,000 to PC per ITD reports.	CN			493				493
		<b>Sum</b>	<del>51</del> 86	0	543	0	0	0	594 629
14343	Sidewalk, North Middleton Road, Middleton	PE							0
		PC	<del>6</del> 8						<del>6</del> 8
	Funding Source: TAP-State		RW						0
	This project will install sidewalks along North Middleton Road on the west side, from Triumph Drive south 225-feet to connect to sidewalks existing along Mountain View subdivision across the street from Mill Creek Elementary School.  Increase PC by \$2,000 in FY2014 and decrease CN by \$5,000 in FY2015 in PC per ITD reports.		UT						0
			CE						0
			CN		<del>42</del> 37				<del>42</del> 37
			<b>Sum</b>	<del>6</del> 8	<del>42</del> 37	0	0	0	0
14343	Sidewalk, North Middleton Road, Middleton	PE							0
		PC	<del>2</del> 0						<del>2</del> 0
	Funding Source: Local Participating		RW						0
	Same as above.  Decrease PC by \$2,000 in Fy2014 and increase CN by \$5,000 in FY2015 per ITD reports.		UT						0
			CE						0
			CN		<del>10</del> 15				<del>10</del> 15
			<b>Sum</b>	<del>2</del> 0	<del>10</del> 15	0	0	0	0

PE=Preliminary Engineering

PC = Preliminary Engineering Consultant

RW = Right-of-Way

UT = Utilities

CE = Construction Engineerin-61+

CN = Construction

T:\FY14\600 Projects\685 TIP\FY1418 TIP\Amendments\AdminMod4.doc