



Working together to plan for the future

COMPASS BOARD PACKET

October 19, 2015



Working together to plan for the future

**Community Planning Association of Southwest Idaho
2015 Board of Directors**

GENERAL MEMBERS	SPECIAL MEMBERS	EX-OFFICIO MEMBERS
Ada County: Commissioner Dave Case Commissioner Jim Tibbs Commissioner Rick Yzaguirre	Boise State University: Nicole Nimmons, Executive Director, Transportation and Parking Services	Governor's Office: David Hensley, Chief of Staff
Canyon County: Commissioner Tom Dale Commissioner Craig Hanson Commissioner Steve Rule	Capital City Development Corporation: John Brunelle, Executive Director	Greater Boise Auditorium District: Pat Rice, Executive Director
City of Boise: Mayor Dave Bieter Councilmember Elaine Clegg Councilmember Scot Ludwig	Idaho Department of Environmental Quality: Aaron Scheff, Regional Administrator	Southwest District Health Department: Bruce Krosch, Director
City of Caldwell: Mayor Garret Nancolas Brent Orton, Public Works Director	Idaho Transportation Department: Amy Revis, District 3 Engineer	
City of Eagle: Mayor Jim Reynolds	Valley Regional Transit: Kelli Fairless, Executive Director	
City of Garden City: Mayor John Evans		
City of Kuna: Mayor Greg Nelson		
City of Meridian: Mayor Tammy de Weerd Councilmember Charlie Rountree		
City of Middleton: Mayor Darin Taylor		
City of Nampa: Mayor Bob Henry Councilmember Paul Raymond		
City of Parma: Mayor Nathan Leigh		
City of Star: Mayor Nathan Mitchell		
City of Wilder: Tracy Jones, Public Works Supervisor		
Ada County Highway District: Commissioner Rebecca Arnold Commissioner Sara Baker Commissioner Jim Hansen		
Canyon Highway District #4: Commissioner John McEvoy		

T:\FY16\900 Operations\Board\2015 Board Members.docx

MAKING A MOTION:

1. **Seek recognition from the chair.**
2. **When you are recognized, say, "I move..."**
State your motion clearly, concisely, and completely.
3. **Wait for someone to "second" your motion.**
A "second" does not imply the person making the second agrees with the motion – only that he/she agrees it should be debated.
4. **Wait while the chair restates the motion.**
Be prepared to provide the motion to the chair in writing, if needed or requested, to ensure the chair accurately restates it.
5. **Respectfully debate your motion.**
As the person making the motion, you have the right to speak first, but do not have to. When you speak, state your opinion then respectfully listen to, and consider, other opinions.
6. **Wait for the chair to take a vote.**
After discussion is complete, the chair will call for a vote.
7. **Listen as the chair announces the result of the vote.**

Motions to Protect Rights:

- Division of the Assembly
- Point of order
- Appeal chair's ruling
- Point of information
- Parliamentary inquiry

Motions to Choose Voting Methods:

- Vote by ballot, roll call, counted vote
- Choose method of nominations
- Open or close nominates or the polls

Motions to Delay Action:

- Refer to a committee
- Postpone to a definite time
- Recess
- Adjourn
- Postpone indefinitely
- Lay on the table

Motions to Vary the Procedures:

- Suspend the rules
- Divide the question
- Request to withdraw a motion
- Request relief from duty – or resign

Motions to Re-examine:

- Reconsider
- Rescind/Amend something previously adopted
- Take from the table
- Discharge a committee

To Change a Proposed Motion:
Amend Motions to Raise Urgent Issues:
<ul style="list-style-type: none"> • Question of privilege • Orders of the day • Object to consideration
Motions to Control Debate:
<ul style="list-style-type: none"> • Limit debate • Previous question

TABLE OF RULES RELATING TO MOTIONS:

Motion	Debate?	Amend?	Vote
Adjourn	No	No	Majority
Amend	Yes	Yes	Majority
Amend Something Previously Adopted	Yes	Yes	(a) Majority with notice; or (b) 2/3; or (c) Majority of entire membership
Appeal	Normally	No	Majority in negative required to reverse chair's decision
Commit	Yes	Yes	Majority
Debate, Close (Previous Question)	No	No	2/3
Debate, Limit or Extend Limits of	No	Yes	2/3
Main Motion	Yes	Yes	Majority
Postpone	Yes	Yes	Majority
Previous Question	No	No	2/3
Recess	No	Yes	Majority
Reconsider	If motion to be reconsidered debatable	No	Majority
Rescind	Yes	Yes	(a) Majority with notice; or (b) 2/3; or (c) Majority of entire membership
Refer (Commit)	Yes	Yes	Majority
Suspend the Rules (of Order)	No	No	2/3
Suspend the Rules (standing or convention standing rules)	No	No	Majority
Voting, motions relating to	No	Yes	Majority



Working together to plan for the future

2015-2016 COMPASS Board Meeting Dates

COMPASS BOARD MEETING DATE/TIME	LOCATION	KEY ITEMS
Monday, November 16, 2015		CANCELED
Monday, December 21, 2015	Nampa Civic Center 311 3rd Street S. Nampa, Idaho	<p>Annual Meeting and Annual Holiday Board Luncheon</p> <p>Confirm Board Officers: Chair, Chair-Elect, Vice Chair, Immediate Past Chair and Elect Secretary/Treasurer</p> <p>Confirm Executive Committee Representatives for Cities under 25,000 in Population</p> <p>Approve 2016 Idaho Legislative Session Position Statements</p> <p>Adopt Resolution Approving Revision 1 of the FY2016 Unified Planning Work Program and Budget</p> <p>Adopt Resolution amending the FY2015-2019 Regional Transportation Improvement Program</p> <p>Approve Changes to the Regional Transportation Improvement Program Amendment Policy</p>
Monday, February 22, 2016	COMPASS 1 st Floor Board Room 700 NE 2 nd Street Meridian, Idaho	<p>Approve Priorities of New Projects for FY2017-2021 Regional Transportation Improvement Program</p> <p>Approve Updates to COMPASS Financial Policies and Procedures</p>
Monday, April 18, 2016	COMPASS 1 st Floor Board Room 700 NE 2 nd Street Meridian, Idaho	To Be Determined
Monday, June 20, 2016	COMPASS 1 st Floor Board Room 700 NE 2 nd Street Meridian, Idaho	To Be Determined
Monday, August 15, 2016	COMPASS 1 st Floor Board Room 700 NE 2 nd Street Meridian, Idaho	To Be Determined
Monday, October 17, 2016	COMPASS 1 st Floor Board Room 700 NE 2 nd Street Meridian, Idaho	To Be Determined
Monday, December 19, 2016	Nampa Civic Center 311 3rd Street S. Nampa, Idaho	<p>Annual Meeting and Annual Holiday Board Luncheon</p> <p>Confirm Board Officers: Chair, Chair-Elect, Vice Chair, Immediate Past Chair and Elect Secretary/Treasurer</p> <p>Confirm Executive Committee Representatives for Cities under 25,000 in Population</p>



Working together to plan for the future

COMPASS BOARD OF DIRECTORS' MEETING OCTOBER 19, 2015 – 1:30 PM COMPASS, 1ST FLOOR BOARD ROOM 700 NE 2ND STREET, SUITE 200, MERIDIAN, IDAHO

NOTICE: The online document includes bookmarks at the left of the screen that are named to correspond to agenda items that have attachments. Clicking on a bookmark or agenda item will take you directly to the named document.

** AGENDA **

I. CALL TO ORDER (1:30)

II. PLEDGE OF ALLEGIANCE

III. AGENDA ADDITIONS/CHANGES

IV. OPEN DISCUSSION/ANNOUNCEMENTS

V. CONSENT AGENDA

- Page 3 * A. Approve September 21, 2015, Board Meeting Minutes
- Page 7 * B. Receive August 11, 2015, Executive Committee Meeting Minutes
- Page 9 * C. Approve List of Records for Destruction
- Page 12 * D. Establish 2016 COMPASS Board and Executive Committee Meeting Dates and Location. Provide 30 Day Notice of Annual Meeting
- Page 13 * E. Adopt Resolution 01-2016 Approving Rural Project Priorities Recommended by Rural Agencies in Ada and Canyon Counties

VI. INFORMATION/DISCUSSION ITEMS

- 1:35 A. Status Report - Air Quality Issues in the Treasure Valley Mike Toole
DEQ staff will provide an update on *air quality issues in the Treasure Valley, including the revised ozone standard.*
- 1:55 B. Status Report – State and Federal Legislative Issues Ken Burgess
Ken Burgess will provide an update on state and legislative issues.
- 2:05 *C. Status Report – FY2016 Project Development Program Sabrina Minshall
Page 17 *Sabrina Minshall will provide a status report on projects for the FY2016 Project Development Program.*
- 2:15 *D. Status Report - *Communities in Motion 2040 2.0* Liisa Itkonen
Page 18 **Development**
COMPASS staff will review Communities in Motion 2040 2.0 transportation components and the update to demographic forecast.

VII. ACTION ITEMS

- 2:35 *A. **Approve Process for Developing Future Public Transportation System** **Walt Satterfield**
Page 20 *Walt Satterfield will seek COMPASS Board approval of the process for developing the public transportation system for CIM 2040 2.0.*
- 2:45 *B. **Approve Shift of High Capacity Corridor Study TMA Funds to Preliminary Development** **Walt Satterfield**
Page 23 *Walt Satterfield will seek approval of the High Capacity Corridor Study TMA funds shift from FY2018 to preliminary development.*
- 2:55 *C. **Approve FY2016 COMPASS Funding Plan** **Sabrina Minshall**
Page 24 *Sabrina Minshall will seek COMPASS Board approval of the COMPASS FY2016 funding plan.*
- 3:05 *D. **Adopt Resolution 02-2016 Amending the FY2016-2020 Regional Transportation Improvement Program** **Toni Tisdale**
Page 33 *Toni Tisdale will seek COMPASS Board approval to amend the FY2016-2020 Regional Transportation Improvement Program to add one project, remove one project, release funds from three projects, and rebalance program for possible High Capacity Corridor study change.*
- 3:15 *E. **Approve Policy for Project Cost Overruns in the CIM Implementation Grant Program** **Don Matson**
Page 42 *Don Matson will seek approval of COMPASS policy for grant recipients seeking additional reimbursements.*

VIII. EXECUTIVE DIRECTOR'S REPORT (INFORMATION ONLY) (3:25)

- Page 45 *A. **Staff Activity Report**
- Page 52 *B. **Status Report – Current Air Quality Efforts**
- Page 54 *C. **Status Report – Standing Committees' Attendance**
- Page 58 *D. **Administrative Modifications**
- Page 63 *E. **Status Report - Quarterly Transportation Project Information**

IX. ADJOURNMENT (3:30)

*Enclosures. Times are approximate. Agenda is subject to change.

T:\FY16\900 Operations\Board\2016 agendasminutes\agenda10192015.docx



**BOARD OF DIRECTORS' MEETING
SEPTEMBER 21, 2015
COMPASS, 1ST FLOOR BOARD ROOM
700 NE 2ND STREET, MERIDIAN, IDAHO**

**** MINUTES ****

ATTENDEES: Rebecca Arnold, Commissioner, Ada County Highway District
Sara Baker, Commissioner, Ada County Highway District, **Chair Elect**
Dave Bieter, Mayor, City of Boise
John Brunelle, Capital City Development Corporation
Dave Case, Commissioner, Ada County, **Secretary-Treasurer**
Tom Dale, Commissioner, Canyon County
John Evans, Mayor, Garden City
Kelli Fairless, Valley Regional Transit
Jim Hansen, Commissioner, Ada County Highway District
Craig Hanson, Commissioner, Canyon County
Bob Henry, Mayor, City of Nampa
Caleb Hood for Tammy de Weerd, Mayor, City of Meridian
Bruce Krosch, Southwest District Health, Ex officio
Kathleen Lacey for Elaine Clegg, Councilmember, City of Boise
Nathan Leigh, Mayor, City of Parma
Scot Ludwig, Councilmember, City of Boise
Dave Luft for Aaron Scheff, Department of Environmental Quality
Robb MacDonald for Garret Nancolas, Mayor, City of Caldwell, **Chair**
John McEvoy, Commissioner, Canyon Highway District #4
Bryce Millar, Commissioner, Nampa Highway District #1
Nicole Nimmons, Boise State University
Brent Orton, City of Caldwell
Paul Raymond, Councilmember, City of Nampa
Amy Revis, Idaho Transportation Department – District 3
Jim Reynolds, Mayor, City of Eagle
Charlie Rountree, Councilmember, City of Meridian, **Immediate Past Chair**
Steven Rule, Commissioner, Canyon County, **Vice Chair**
Matt Stoll, Executive Director, Community Planning Association, Ex officio
Darin Taylor, Mayor, City of Middleton
Jim Tibbs, Commissioner, Ada County
Rick Yzaguirre, Commissioner, Ada County

MEMBERS David Hensley, Governor's Office, Ex officio
ABSENT: Nathan Mitchell, Mayor, City of Star
Greg Nelson, Mayor, City of Kuna
Patrick Rice, Greater Boise Auditorium District, Ex officio

OTHERS: Nancy Brecks, Community Planning Association
Ken Burgess, Veritas Advisors
Michael Fuss, City of Nampa
Megan Larsen, Community Planning Association
Amy Luft, Community Planning Association
Larry Maneely, Ada County
Sabrina Minshall, Community Planning Association
Zach Piepmeyer, City of Boise
Toni Tisdale, Community Planning Association
Bill Vaughan, City of Eagle
Dave Wallace, Ada County Highway District

CALL TO ORDER:

Chair Elect Sara Baker called the meeting to order at 1:30 pm.

AGENDA ADDITIONS/CHANGES

None.

OPEN DISCUSSION/ANNOUNCEMENTS

Chair Elect Baker welcomed Scot Ludwig, Boise City Councilmember, to his first COMPASS Board meeting.

Matt Stoll provided a reminder of the September 24 and 25, 2015, COMPASS Educational series presentations on Oregon's new vehicle miles of travel tax, OReGo, and nominations for the 2015 COMPASS Leadership in Motion Awards will close at 3:00 pm on September 30, 2015.

CONSENT AGENDA

- A. Approve August 17, 2015, Board Meeting Minutes**
- B. Receive July 14, 2015, Executive Committee Meeting Minutes**
- C. Approve Updates to COMPASS Records Retention Policy**
- D. Approve List of Records for Destruction**

Bob Henry moved and Jim Hansen seconded approval of the Consent Agenda as presented. Motion passed unanimously.

SPECIAL ITEM

- A. Status Report – Federal Transportation Reauthorization**

Ken Burgess provided a status report on federal transportation funding and reauthorization.

ACTION ITEMS

A. Approve Federal Transportation Policy Positions

Ken Burgess presented federal transportation policy positions as recommended for COMPASS Board approval by the Executive Committee.

After discussion, **Bob Henry moved and Charlie Rountree seconded approval of the federal transportation policy positions as presented. Motion passed unanimously.**

B. Adopt Resolution 18-2015 Approving the Updated Joint Powers Agreement and Board Bylaws

Matt Stoll presented the updated Joint Powers Agreement and Board Bylaws for approval.

After discussion, **Darin Taylor moved and Bob Henry seconded adoption of Resolution 18-2015 approving the updated Joint Powers Agreement and Board Bylaws as presented.**

Matt Stoll called role.

Rebecca Arnold - no

Sara Baker - yes

Dave Bieter - yes

John Brunelle - yes

Dave Case - yes

Kathleen Lacey for Elaine Clegg - yes

Tom Dale - yes

Caleb Hood for Tammy de Weerd - yes

John Evans - yes

Kelli Fairless - yes

Jim Hansen - yes

Craig Hanson - yes

Bob Henry - yes

Nathan Leigh - yes

Scot Ludwig - yes

John McEvoy - yes

Bryce Millar - abstain

Robb MacDonald for Garret Nancolas - yes

Nicole Nimmons - yes

Brent Orton - yes

Paul Raymond - yes

Amy Revis - yes

Jim Reynolds – yes

Charlie Rountree - yes

Steve Rule - yes

David Luft for Aaron Scheff - yes

Darin Taylor - yes

Jim Tibbs - yes

Rick Yzaguirre - yes

Motion passed 27 to 1 with 1 abstention.

C. Adopt Resolution 19-2015 Approving the FY2016-2020 Regional Transportation Improvement Program and Associated Air Quality Conformity Demonstration

Toni Tisdale presented the FY2016-2020 Regional Transportation Improvement Program and associated air quality conformity demonstration for COMPASS Board approval as recommended by the Regional Technical Advisory Committee. COMPASS received 23 comments during the public comment period.

After discussion, Darin Taylor moved and Tom Dale seconded adoption of Resolution 19-2015 approving the FY2016-2020 Regional Transportation Improvement Program and associated air quality conformity demonstration as presented. Motion passed unanimously.

D. Adopt Resolution 20-2015 Approving the FY2015-2019 Regional Transportation Improvement Program

Toni Tisdale presented an amendment to the FY2015-2019 Regional Transportation Improvement Program as recommended for COMPASS Board approval by the Regional Technical Advisory Committee. No comments were received during the public comment period.

After discussion, Bob Henry moved and Rebecca Arnold seconded adoption of Resolution 20-2015 approving the FY2015-2019 Regional Transportation Improvement Program as presented. Motion passed unanimously.

ADJOURNMENT

Chair Elect Baker adjourned the meeting at 2:30 pm.

Dated this 19th day of October 2015.

Approved:

**By: _____
Garret Nancolas, Chair
Community Planning Association of
Southwest Idaho**

Attest:

**By: _____
Matthew J. Stoll, Executive Director
Community Planning Association of
Southwest Idaho**

**EXECUTIVE COMMITTEE MEETING
AUGUST 11, 2015
COMPASS, 2ND FLOOR LARGE CONFERENCE ROOM
MERIDIAN, IDAHO**

****MINUTES****

ATTENDEES: Dave Bieter, Mayor, City of Boise, via telephone
Dave Case, Commissioner, Ada County, **Secretary-Treasurer**
Bob Henry, Mayor, City of Nampa
Nathan Leigh, Mayor, City of Parma
Jim Reynolds, Mayor, City of Eagle
Charlie Rountree, Councilman, City of Meridian, **Immediate Past Chair**
Steve Rule, Commissioner, Canyon County, **Vice Chair**
Dave Wallace for Sara Baker, Commissioner, Ada County Highway
District, **Chair Elect**

MEMBERS ABSENT: Garret Nancolas, Mayor, City of Caldwell, **Chair**

OTHERS PRESENT: Ken Burgess, Veritas Advisors
Nancy Brecks, Community Planning Association
Kelli Fairless, Valley Regional Transit
Megan Larsen, Community Planning Association
Sabrina Minshall, Community Planning Association
Matt Stoll, Executive Director, Community Planning Association

CALL TO ORDER:

Acting Chair Dave Case called the meeting to order at 2:10 pm.

AGENDA ADDITIONS/CHANGES

None.

OPEN DISCUSSION/ANNOUNCEMENTS

Several announcements were made by committee members.

CONSENT AGENDA

A. Approve July 14, 2015, Executive Committee Meeting Minutes

Charlie Rountree moved and Bob Henry seconded approval of the Consent Agenda as presented. Motion passed unanimously.

ACTION ITEM

A. Establish September 21, 2015, COMPASS Board Meeting Agenda

Matt Stoll presented staff proposed Agenda Items 1-18 for the September 21, 2015, COMPASS Board meeting. Matt requested the latitude to amend the agenda as necessary.

After discussion, **Bob Henry moved and Charlie Rountree seconded approval of Agenda Items 1-18 for the September 21, 2015, COMPASS Board meeting as presented. Matt Stoll has the latitude to amend the agenda as necessary. Motion passed unanimously.**

ADJOURNMENT

Dave Case moved and Charlie Rountree seconded adjournment at 2:20 pm. Motion passed unanimously.

Dated this 8th day of September 2015.

Approved:

**By: _____
Garret Nancolas, Chair
Community Planning Association of
Southwest Idaho**

Attest:

**By: _____
Matthew J. Stoll, Executive Director
Community Planning Association of
Southwest Idaho**

COMPASS BOARD AGENDA ITEM V-C

Date: October 19, 2015

Topic: Records for Destruction

Request/Recommendation:

Staff seeks COMPASS Board approval of destruction of the records listed in the attachment.

Background/Summary:

The COMPASS Board approved the Records Retention Policy at the February 24, 2014, meeting.

The policy describes the type of records that COMPASS has and specifies the retention period for those types of records. The policy further describes the process of destruction for those records that have exceeded their retention period.

In compliance with the policy guidance, COMPASS staff proposes to destruct the records listed on the attachment because those records have exceeded their Board-approved retention period.

COMPASS staff has provided a list of records proposed for destruction to the Idaho state archivist and expects that the state archivist will not object to the destruction of the listed records.

COMPASS staff will have the records destructed by a commercial shredding service 30 days from the date that destruction is approved by both the COMPASS Board and the Idaho state archivist. The shredding service will provide a certification of destruction.

Implication (policy and/or financial):

If both the COMPASS Board and the Idaho state archivist approve the destruction of the listed records, the destruction will be completed as described. If either the COMPASS Board or the Idaho state archivist do not approve destruction of the listed records, the records will be retained.

More Information:

- 1) Attachment
- 2) For detailed information contact: Megan Larsen, at 475-2228 or mlarsen@compassidaho.org.

ML:nb T:\Operations\Admin & Office\Records Management\Records Destruction Board Memo 10-19-2015.docx

COMMUNITY PLANNING ASSOCIATION OF SOUTHWEST IDAHO
Inventory of Records to be Destroyed

Description of record	When created*	Retention period for this record in years	Expiration of retention period	Date list to state archivist	Date of request for Board approval	Destruction date
FY2003 and FY2004 - Assorted correspondence related to CIM, including correspondence related to RFP process and contract award	9/30/2010	5	9/30/2015	10/16/2015	10/19/2015	
FY2010 Comments on 2035 Communities in Motion population projections	9/30/2010	5	9/30/2015	10/16/2015	10/19/2015	
FY2010 Public Meeting Sign in sheets	9/30/2010	5	9/30/2015	10/16/2015	10/19/2015	
Personnel file; employee terminated 6/30/2005	9/30/2005	10	9/30/2015	10/16/2015	10/19/2015	
Personnel file; employee terminated 7/15/2005	9/30/2005	10	9/30/2015	10/16/2015	10/19/2015	
Personnel file; employee terminated 8/19/2005	9/30/2005	10	9/30/2015	10/16/2015	10/19/2015	
FY1986 - Public Comments received at Transit Plan Update Public Hearing	9/30/1986	5	9/30/1991	10/16/2015	10/19/2015	
FY1987 Ada Planning Association Office Procedures	9/30/1987	1	9/30/1997	10/16/2015	10/19/2015	
FY2000 Public Involvement Process and comments received - Middleton Circulation Plan	9/30/2000	5	9/30/2005	10/16/2015	10/19/2015	
CIM 2010 email lists in Accelerator	9/30/2010	1	9/30/2011	10/16/2015	10/19/2015	
Public Involvement Policy update public comment materials – 2003, 2006, 2009	9/30/2009	5	9/30/2014	10/16/2015	10/19/2015	

COMMUNITY PLANNING ASSOCIATION OF SOUTHWEST IDAHO
Inventory of Records to be Destroyed

Description of record	When created*	Retention period for this record in years	Expiration of retention period	Date list to state archivist	Date of request for Board approval	Destruction date
FY2010 – 2014 TIP Public Comment Materials	9/30/2009	5	9/30/2014	10/16/2015	10/19/2015	
FY2011 – 2015 TIP Public Comment Materials	9/30/2010	5	9/30/2015	10/16/2015	10/19/2015	
CIM 2035 Public Comment Materials	9/30/2009	5	9/30/2014	10/16/2015	10/19/2015	
2005 - 2010 State Legislative Positions, from COMPASS Website	9/30/2010	5	9/30/2015	10/16/2015	10/19/2015	
2007 - 2010 Federal Appropriations Requests from COMPASS Website	9/30/2010	5	9/30/2015	10/16/2015	10/19/2015	
2010 Federal Re-Appropriations Requests from COMPASS Website	9/30/2010	5	9/30/2015	10/16/2015	10/19/2015	
Regional Transportation Act, 2008, draft legislation and related information from COMPASS Website	9/30/2008	5	9/30/2013	10/16/2015	10/19/2015	
FY2010 accounts payable records, including check stubs from payments, COMPASS request for payment forms, vendor invoices, packing slips, COMPASS purchase orders, and voided checks; alphabetical by vendor	9/30/2010	5	9/30/2015	10/16/2015	10/19/2015	
FY2010 employee timesheets	9/30/2010	5	9/30/2015	10/16/2015	10/19/2015	
FY2010 accounts payable records for employee benefit payments, including check stubs from payments, COMPASS request for payment forms, and vendor invoices.	9/30/2010	5	9/30/2015	10/16/2015	10/19/2015	



**2016 COMPASS Board of Directors' Meeting Dates
COMPASS, 1st Floor Board Room
1:30-3:30 pm**

February 22, 2016
April 18, 2016
June 20, 2016
August 15, 2016
October 17, 2016
December 19, 2016 (Nampa Civic Center)

**2016 COMPASS Executive Committee Meeting Dates
COMPASS, 2nd Floor Large Conference Room
2:00-3:30 pm**

January 12, 2016
February 2, 2016
March 8, 2016
April 12, 2016
May 10, 2016
June 14, 2016
July 12, 2016
August 9, 2016
September 13, 2016
October 11, 2016
November 8, 2016
December 13, 2016

T:\FY16\900 Operations\Board\2016 Board and Executive Committee Meeting Dates.docx



COMPASS BOARD AGENDA ITEM V-E

DATE: October 19, 2015

Topic: Resolution 01-2016 Approving Rural Project Priorities

Request/Recommendation:

Staff seeks COMPASS Board adoption of Resolution 01-2016 (Attachment 1) approving rural project priorities in support of local agency applications to the Local Highway Technical Assistance Council (LHTAC). The project priorities as presented were recommended by the rural transportation agencies in Ada and Canyon Counties on October 7, 2015.

Background/Summary:

On August 20, 2012, the COMPASS Board approved the process for rural project prioritization. The process outlines that the rural roadway jurisdictions in Ada and Canyon Counties would meet to determine rural priorities for the region, and forward a recommendation to the COMPASS Board for approval.

COMPASS staff is currently in the process of obtaining signatures for rural priorities (attachment to the resolution) from the leadership of each jurisdiction. A signed copy of the recommendation will be provided at the COMPASS Board meeting.

LTHAC currently accepts Surface Transportation Program – Rural applications every other year. This year is an “off” year, with no applications accepted in the program.

Implication (policy and/or financial):

Rural applications are due to LHTAC starting November 30, 2015. Applications that include regional priorities receive additional points in the scoring process. COMPASS Board approval of these priorities provides the support needed.

More Information:

- 1) Attachment 1 – Resolution 01-2016
- 2) For detailed information contact: Toni Tisdale, Principal Planner, at 475-2238 or ttisdale@compassidaho.org.

TT:nb T:\FY16\600 Projects\685 101 TIP\FY1721TIP\FY2017Apps\Rural\151019mmoBDRuralPriorities.docx



RESOLUTION NO. 01-2016

**FOR THE PURPOSE OF APPROVING RURAL PROJECT PRIORITIES
IN ADA AND CANYON COUNTIES**

WHEREAS, the Community Planning Association of Southwest Idaho was designated by the Governor of Idaho as the metropolitan planning organization responsible for transportation planning in Ada and Canyon Counties; and

WHEREAS, the COMPASS Board recognized the need to prioritize rural project applications in Ada and Canyon Counties; and

WHEREAS, the Local Highway Technical Assistance Council desires regional coordination prior to agencies submitting rural transportation applications; and

WHEREAS, representatives of rural transportation jurisdictions in Ada and Canyon Counties met on October 7, 2015, in the City of Greenleaf, Idaho to determine the most effective rural projects in the region; and

WHEREAS, representatives of each rural transportation jurisdiction in Ada and Canyon Counties signed the attached rural prioritization recommendation, dated October 7, 2015, as support for these projects and the priorities.

NOW, THEREFORE, BE IT RESOLVED, that the Community Planning Association of Southwest Idaho Board of Directors approves and supports the rural priorities for Ada and Canyon Counties.

DATED this 19th day of October 2015.

APPROVED:

By: _____
**Garret Nancolas, Chair
Community Planning Association
of Southwest Idaho Board of Directors**

ATTEST:

By: _____
**Matthew J. Stoll, Executive Director
Community Planning Association
of Southwest Idaho**

T:\FY16\900 Operations\Board\2016 Resolutions\Resolution 01-2016.docx

Recommendations from the
Fourth Annual Rural Prioritization Meeting
October 7, 2015
City of Greenleaf, ID

In 2012, a rural project prioritization process was agreed to by all the rural roadway jurisdictions in Ada and Canyon Counties and approved by the COMPASS Board on August 20, 2012. The process provides regional priorities for the Local Highway Technical Assistance Council's (LHTAC) rural project application process. Regional priorities allow additional points through LHTAC's scoring process.

Rural roadway jurisdictions in the two-county area include the following:

- Ada County Highway District
- Canyon Highway District Number 4
- City of Greenleaf
- City of Parma
- City of Melba
- City of Notus
- City of Wilder
- Golden Gate Highway District Number 3
- Nampa Highway District Number 1
- Notus-Parma Highway District Number 2

Participation in the rural prioritization process is voluntary; and these priorities were established by agreement between the undersigned member agencies.

The Fourth Annual Rural Prioritization meeting was held on October 7, 2015, in the City of Greenleaf. After negotiations, the following priorities are recommended for consideration in the LHTAC application process:

Local Rural Highway Investment Program – Construction

1. New Alignment, Penny Lane to D Avenue, near COSSA
City of Wilder
2. Crack Seal and Overlay, Harmony Lane
City of Greenleaf
3. Rehabilitation, Sand Road, Third Street to City Limits
City of Parma
4. Pavement Restoration, Butte Road, Hill Road to CanAda Road
Nampa Highway District Number 1

Local Rural Highway Investment Program – Signs

1. City of Greenleaf
2. Golden Gate Highway District Number 3

Local Rural Highway Investment Program – Planning

1. Notus-Parma Highway District
2. Canyon Highway District

The participants at the Fourth Annual Rural Prioritization meeting recommend the programs, as described, for approval by the COMPASS Board.

Ada County Highway District	Canyon Highway District Number 4	City of Greenleaf
City of Parma	City of Melba	City of Notus
City of Wilder	Golden Gate Highway District Number 3	Nampa Highway District Number 1
Notus-Parma Highway District Number 2		

T:\FY16\600 Projects\685 101 TIP\FY1721TIP\FY2017Apps\Rural\2015RuralRecommendations.docx

COMPASS BOARD AGENDA ITEM VI-C

Date: October 19, 2015

Topic: FY2016 Project Development Program

Request/Recommendation:

Information only, staff will provide a status report on the FY2016 Project Development Program

Background/Summary:

The approved FY2016 Unified Planning and Work Program and Budget (UPWP) includes \$100,000 for continuation of the Project Development Program. Applications for both FY2015 and FY2016 were solicited from member agencies in December 2014. COMPASS received ten applications and proceeded with projects based on readiness. FY2015 funding was used to begin four projects, which are in various stages. The outcomes of those projects will be presented at the December 2015 Board meeting.

At the October 2015 Board meeting, Sabrina Minshall will present a summary of the two additional projects that will be moving forward with FY2016 funds, and the second phase of a project that has completed its first phase of project development with FY2015 funds. Only two new projects are being pursued in FY2016 due to their complexity and anticipated higher cost.

Implication (policy and/or financial):

The Project Development Program assists member agencies in taking project ideas and developing concept reports that include scope statements, cost estimates, environmental scans, public involvement plans, and design sketches. The projects will then be ready for grant applications and be more competitive. The overall goal of the program is to bring more funding into the region and to deliver quality projects on time and on budget.

More Information:

- 1) For more information contact Sabrina Minshall, Director of Planning at (208) 475-2234 or sminshall@compassidaho.org.

SM:nb T:\FY16\900 Operations\Board\2016 agendasminutes\Packets\Project Development Program.docx

COMPASS BOARD AGENDA ITEM VI-D

Date: October 19, 2015

Topic: Status Report - *Communities in Motion 2040 2.0* Development

Request/Recommendation:

This is an information item.

Background/Summary:

In October 2014, the COMPASS Board approved the scope of work for *Communities in Motion 2040 2.0* (CIM 2040 2.0), the update to CIM 2040, the regional long-range transportation plan for Ada and Canyon Counties. This plan update keeps the horizon year of 2040, and builds on the main tenets of CIM 2040. Below is an update on the planning process.

COMPASS has prepared the CIM 2040 2.0 demographic forecast after a review of approved preliminary plats, followed by review by member agencies of their respective areas and additional changes to the demographic forecasts to reflect local policies and plans. The CIM 2040 2.0 demographic forecast updates the base data to reflect on-the-ground changes made since the CIM 2040 Vision was adopted in 2012. The demographic forecast will be used to provide inputs to the travel demand model, the financial forecast, traffic impact studies, and other studies and data that support the plan update.

CIM 2040 2.0 is compiling the needed future transportation system from four components: 1) the bicycle/pedestrian network, 2) freight (movement of goods), 3) public transportation, and 4) roadways (capacity, congestion, safety, etc.). This approach includes a detailed analysis of each component, integrating them into a system, followed by a systematic assessment of the needed future transportation system and investment priorities.

- 1) COMPASS staff are working with the Active Transportation Workgroup to identify regional bicycle/pedestrian network needs. To collect data on bicycle/pedestrian use in the valley, COMPASS has installed 12 permanent bicycle counters in Ada and Canyon Counties, and has an additional 16 portable counters available for use by member agencies to support local planning efforts.

- 2) COMPASS has convened a Freight Advisory Workgroup to help guide the development of the freight component, and is collecting vehicle classification count data this fall, funded by a Second Strategic Highway Research Program (SHRP2) grant. The SHRP2 grant is also funding a contract to develop a performance measure framework for comparing effects of transportation investments.



- 3) A consultant recently concluded a public transportation network analysis that provides service standards and density thresholds for developing a future public transportation network. The process to develop the future public transportation system is on the Board's agenda today for approval.
- 4) The roadway component will address intelligent transportation systems, transportation demand management, and traditional capacity needs. COMPASS is updating its congestion management process to provide more information about congestion and system reliability for CIM 2040 2.0.

The work on the four components will be completed by fall 2016, and they will be compiled into draft future transportation system options in early 2017. Each option will include all four components. The draft options, including planning level cost estimates, will be presented to the public for feedback in spring 2017.

Implication (policy and/or financial):

In order to continue receiving federal transportation funding for state and local projects, the CIM update must be adopted by the COMPASS Board by December 2018.

More Information:

- 1) For detailed information contact Liisa Itkonen, at 475-2241 or litkonen@compassidaho.org

LI:nb T\FY15\600 Projects\661 CIM\0. Project Mgmt & Implementation\Board\CIM_2_0_Update_Boardmemo_Oct19_2015.docx

COMPASS BOARD AGENDA ITEM VII-A

Date: October 19, 2015

Topic: Process for Developing the Future Public Transportation System

Request/Recommendation:

COMPASS staff seeks COMPASS Board endorsement of the process for developing the future public transportation system, as recommended by the Public Transportation Work Group and the Regional Transportation Advisory Committee:

Endorse the process (attached) for developing the future public transportation system. This process defines the steps necessary for a robust Treasure Valley public transportation system needed for the year 2040, including the service phasing and mode choices of the future system, prioritization of key corridors, preservation strategies, funding requirements, and targeted investments.

Background/Summary:

The future transportation system for the next long-range transportation plan update, *Communities in Motion 2040 2.0* will integrate four components: roadways, freight, bicycle and pedestrian networks, and public transportation. The components will be integrated to complete the future transportation system.

COMPASS contracted with Kittelson and Associates to develop a public transportation network analysis for establishing the future public transportation system in Ada and Canyon Counties. The analysis provides recommended criteria for developing public transportation routes, taking into account the patterns of regional population and economic growth, development activity, transportation infrastructure, relevant urban design principles, and the need to make effective use of available funding. COMPASS is using this analysis as a basis for developing the public transportation network, and will integrate that component into the other components of the future transportation system. High capacity corridors will be considered as part of the system evaluation.

Over the past five months, the Public Transportation Workgroup established the process and steps for developing the public transportation system for 2040, and identified key milestones necessary to develop any future high capacity public transportation corridors. Workgroup membership includes staff from Ada County, ACHD, Canyon County, City of Boise, City of Eagle, City of Meridian, City of Nampa, ITD, and Valley Regional Transit.

Implication (policy and/or financial):

The process identifies key steps that are needed for development of the future public transportation system. Key milestones, including funding requirements, land use decisions, and service changes are included in the analysis. Phasing strategies, corridor prioritization, and mode choices will be discerned as the public transportation component is developed for CIM 2040 2.0.

More Information:

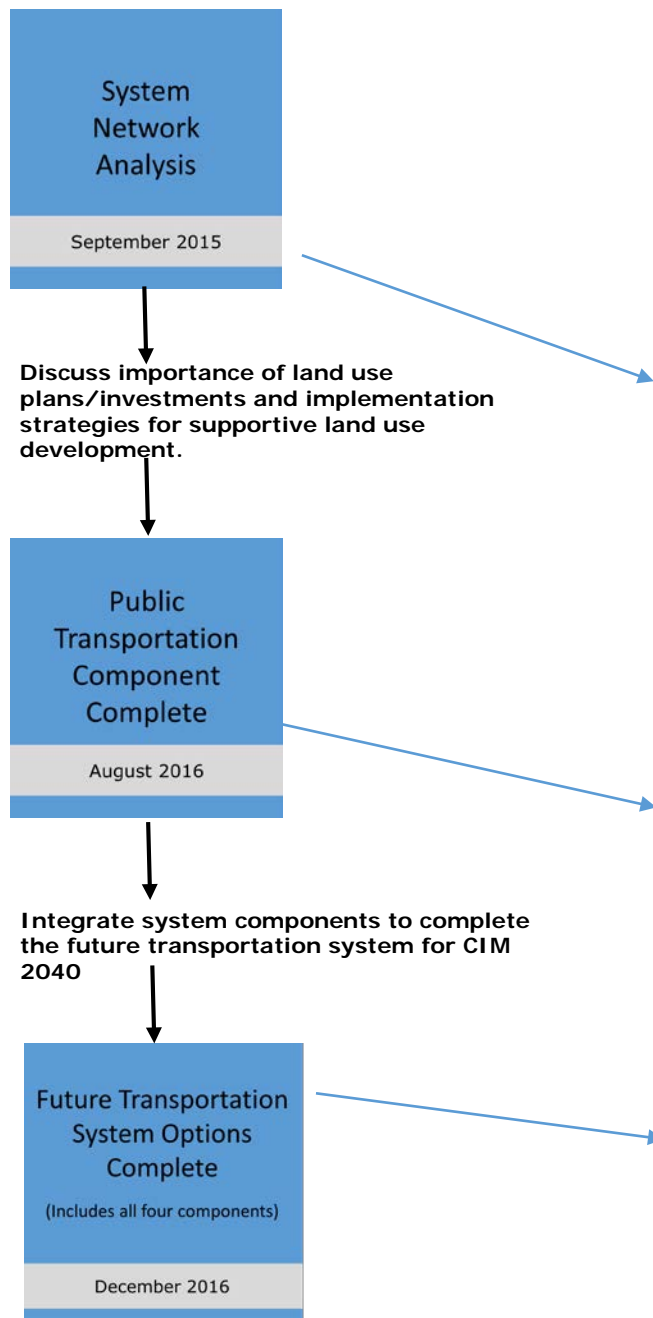
1. Attachment 1: Public Transportation System Process for CIM 2040 2.0.
2. For detailed information contact Walt Satterfield, at 475-2237 or wsatterfield@compassidaho.org.

DRAFT

Process to Develop Public Transportation System for the Treasure Valley

The long-range transportation plan update, *Communities in Motion 2040 2.0*, will frame the public transportation system to year 2040, as part of the overall transportation system. The system will include corridor preferences and mode options based on service thresholds and triggers. Further studies may be needed to develop and implement specific transportation projects (for federal funding).

Process Flow (Key Milestones)

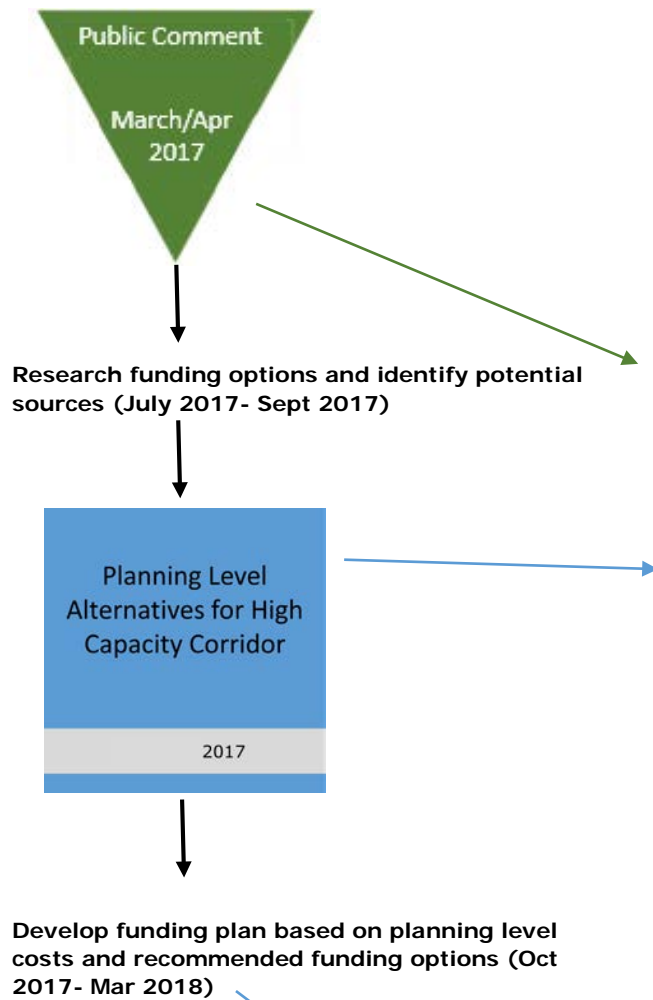


Detailed Steps

1. Develop Public Transportation Component for CIM (Sept 2015-Sept 2016): *Public transportation component of CIM 2040 2.0 will describe a future (2040) public transportation system for Ada and Canyon Counties*

- Kittelson study will be the basis for developing long term public transportation needs for CIM 2040 update by developing thresholds for future services (Sept 2015).
- Refine network based on travel demand model results (Oct 2015- Dec 2015)
- Outreach with stakeholders regarding route alignments and mode options (Jan 2016- May 2016)
- Finalize public transportation component for CIM 2040 2.0 (June 2016-Aug 2016)
 - Include priority corridors and mode preferences justified through the service evaluation.
 - Develop planning level costs for the future system in 2040.

2. Compile Public Transportation Component with Freight, Roadways, and Bike/Pedestrian Components (June 2016-Dec 2016).



- This process is concurrent with finalizing the public transportation component. This step will consider and reconcile potential conflicts with planned investments in the other components

3. Public Comment for CIM Components (March 2017- April 2017)

4. Refine future transportation system including all four components, based on public feedback (April 2017 – Sept 2017)

- The system needs will be evaluated using a phased approach. Phasing will be developed in 5 year or 10 year increments.
- A phasing plan will guide corridor priorities.

5. Reconcile phasing plan with prioritized needs of all transportation investments for CIM 2040 2.0. (Oct 2017- Mar 2018)

- Develop cost estimates for phases of public transportation system components.

6. Prepare needs assessment for transportation improvements identified through the plan (April 2018?-April 2019)

- Identify detailed triggers, phasing and cost estimates of high capacity/fixed guideway corridor(s).
- Identify and implement supportive land use investments/plans for priority corridor(s).
- Determine specific preservation strategies, including ROW acquisitions, which are appropriate to the timeline of the service implementation.
- Identify needed stakeholder agreements as well as regional, urban and rural implementation policies.

COMPASS BOARD AGENDA ITEM VII-B

Date: October 19, 2015

Topic: Shift of High Capacity Corridor Study TMA Funds from FY2018 to Preliminary Development

Request/Recommendation:

COMPASS staff seeks COMPASS Board approval of the following action, prepared by the Public Transportation Work Group and recommended by the Regional Transportation Advisory Committee (RTAC):

Re-program the TMA funds, programmed in FY2018 for a study to identify and analyze options to improve mobility in a future high capacity corridor, to Preliminary Development (projects with development activity but no programmed year of construction).

Background/Summary:

The FY2014-2018 Transportation Improvement Program included \$1 million in FY2015 to be used for a "Treasure Valley High Capacity Corridor Alternatives Analysis" (Key No. 13046), described as a: "Study to identify and analyze options to improve mobility in a priority corridor to be determined in the long-range transportation plan. The study will evaluate all reasonable transit alternatives."

On January 27, 2014, the Board approved moving the FY2015 study funding to FY2018, as recommended by the COMPASS Executive Committee, which recognized that the legislative action in FY2014 and FY2015 will need to be looked at in determining how funds may be programmed in the years after that. The FY2015 funding was in anticipation of state legislative action to provide options for a dedicated source of funding for public transportation. The state legislature did not move forward with such dedicated funding source.

The Public Transportation Workgroup established the process (discussed in the previous agenda item) for developing the public transportation component for CIM 2040 2.0. Phasing strategies, corridor prioritization, and mode choices will be discerned as the public transportation component is developed for CIM 2040 2.0. The planning level alternatives for future public transportation corridors will be identified late in fall 2017, and the needs assessment for improvements will be developed in 2018. Given the timeline as well as the uncertainty of securing a dedicated source of funding for public transportation, the Public Transportation Workgroup and RTAC recommended moving the \$1 million in funding to preliminary development.

Implication (policy and/or financial):

The purpose for the funding has not changed; however, the timeline extension allows for the planning process to be carried out to ensure the most appropriate use of the funds. Moving the funds to preliminary development will require balancing funds for other projects across fiscal years. The RTAC recommendation included an approach to balance the funds, which will be presented in a later agenda item.

More Information:

1. For detailed information contact Walt Satterfield, at 475-2237 or wsatterfield@compassidaho.org.



COMPASS BOARD AGENDA ITEM VII-C

Date: October 19, 2015

Topic: COMPASS FY2016 Funding Plan

Request/Recommendation:

COMPASS staff requests COMPASS Board approval of the COMPASS FY2016 funding plan.

Background/Summary:

The Regional Transportation Advisory Committee (RTAC) reviewed and recommended COMPASS Board approval of the COMPASS FY2016 funding plan on September 23, 2015. An important role of COMPASS is to obtain funding for the implementation of *Communities in Motion 2040*. This work consists of grant research, maintenance of a project needs database, referrals of funding sources to agencies, and writing and administering grants as requested. COMPASS staff work days have been budgeted in the COMPASS Board approved FY2016 Unified Planning Work Program and Budget (UPWP) under program 685.

The purpose of developing a funding plan is to provide transparency and to obtain COMPASS Board endorsement of funding pursuits for the year. While some grants have annual solicitations, most grants or other partnership opportunities present themselves with little lead time for preparation and submission. Identification and validation of projects and efforts allow time to be spent preparing project information early. It is expressly understood that although funds are to be applied for in FY2016, it is most likely the funds will not be available for planning efforts or projects until FY2017 and beyond, due to award cycles and funding availability.

The COMPASS FY2016 funding plan is organized into two sections: COMPASS work efforts to support the mission, and member agency projects. Any project that would require match or local funds from the COMPASS Board in the current fiscal year will need Board action prior to acceptance of the award. Projects where match would be required in a future budget year will be addressed through the annual budget process or through Board action prior to the award, depending on timing for acceptance. Projects that require match or local funds from member agencies will require a commitment letter of that match from the respective agency at the time of application.

During February 2015, COMPASS staff met with member agencies to discuss project needs and COMPASS services. In August 2015, COMPASS staff followed up with those member agencies regarding priority projects and if the member agency would like assistance in pursuing outside funding. The member agencies who have requested this assistance are listed in the COMPASS FY2016 funding plan. This funding plan is intended to allow for some degree of flexibility. If a member agency wants to add a project, a written request can be made to the COMPASS Executive Director. The project will be reviewed by RTAC for recommendation of COMPASS Board approval and then be included.

Implication (policy and/or financial):

The overall intent of this effort is to increase the amount of outside resources being invested in the Treasure Valley to implement the long-range transportation plan, *Communities in Motion 2040*.

More Information:

- 1) Attachment—COMPASS FY2016 funding plan
- 2) For more detailed information contact Sabrina Minshall, AICP, Director of Planning at (208) 475-2234 or sminshall@compassidaho.org.

SM:nb T:\FY15\900 Operations\990 Direct Operations Maint\Board\2016 agendasminutes\Packets\Item VII-C.docx

COMPASS seeks external funding to augment its ability to accomplish its vision and mission. The overall intent of this effort is to increase the amount of outside resources being invested in the Treasure Valley to implement the regional long-range transportation plan, *Communities in Motion 2040 (CIM 2040)*.

The purpose of developing the FY2016 funding plan is to provide transparency and to obtain COMPASS Board endorsement of funding pursuits for the year. While some grants have annual solicitations, most grants or other partnership opportunities present themselves with little lead time for preparation and application. Proactive identification and validation of projects and efforts allow project information to be prepared so it is ready should funding opportunities become available. It is expressly understood that although the funds are to be applied for in FY2016, it is most likely the funds will not be available for planning efforts or projects until FY2017 and beyond due to award cycles and funding availability.

This funding plan is intended to allow for some degree of flexibility. If a member agency wishes to have a project added to the plan, a written request can be made to the COMPASS Executive Director. The project will be reviewed by the Regional Technical Advisory Committee (RTAC) for recommendation to the COMPASS Board and then can be included in the plan.

COMPASS staff work days for grant research and writing have been budgeted in the COMPASS Board approved FY2016 Unified Planning Work Program and Budget (UPWP) under program 685.

Vision

COMPASS is a forum for regional collaboration that helps maintain a healthy and economically vibrant region, offering people choices in how and where they live, work, play, and travel.

Mission

The mission of COMPASS is to conduct regional planning, facilitate regional coordination and cooperation, and serve as a source of information and expertise on issues affecting southwest Idaho. In its role as the metropolitan planning organization for Ada and Canyon Counties, COMPASS fulfills this mission by developing transportation plans and priorities to enable members to access state and federal transportation funds.

Any project which would require match or local funds from the COMPASS Board in the current fiscal year will need Board action prior to acceptance of the award. Projects where match would be required in a future budget year will be addressed through the annual budget process or through Board action prior to the award, depending on timing for acceptance.

An additional role of COMPASS is to obtain funding for the implementation of CIM 2040. This work consists of grant research, maintenance of a project needs database, referrals of funding sources to agencies, technical assistance in grant writing and grant administration, or writing and administering the grants directly. Projects which require

match or local funds from member agencies will require a commitment letter of that match from the respective agency at the time of application.

The funding plan is organized into two sections, COMPASS tasks to support the mission, and member agency projects.

COMPASS Tasks

COMPASS operational tasks are identified by COMPASS staff, are consistent with the Strategic Plan and the long-range transportation plan, and will help to diversify the COMPASS financial base. COMPASS efforts to seek outside funding have been sorted into three categories: 1) Long-Range Plan Enhancements, 2) Technical Services, and 3) Bicycle/Pedestrian Planning. Some efforts overlap categories.

If the effort is internal to COMPASS, it will include a brief description, estimate of direct costs, COMPASS work days funding will be requested for, match considerations, and any funding sources already identified.

Project Name: Constrained Corridors

Project Type: Long-range plan enhancement

Project Description: In coordination with member agencies and based on entitled land use/development, adopted policies or environmental constraints, identify roadway corridors constrained to their existing configuration. Flag corridors in the future network, and limit the regional travel demand model's ability to show expansion. By limiting expansion on those corridors, demand will be pushed to other roadways, showing a more accurate travel distribution.

Estimated Project Cost: \$45,000

COMPASS Staff Work Days: 40

Recommended Local Match: to match grant requirements

Recommended Source of Match:

Possible Funding Sources: FHWA, foundations, SHRP-2

Project Name: Smart Corridors

Project Type: Technical services/Long-range plan enhancement

Project Description: Evaluate intelligent transportation systems, traffic signal system upgrades, and access management improvements that allow for the adaptability of signals to change to traffic patterns and provide for transit signal prioritization. The goal of smart corridors would be to reduce vehicle delay and vehicle mileage, and improve travel times for multiple modes of transportation. Smart corridors can devise strategies to enhance safety and operations of roadways, improve vehicle travel times, relieve congestion, reduce accidents, improve emergency access, and improve freight and transit travel times. Select two similar corridors, evaluate expansion versus "other" non-expansion solutions on both corridors, and assess project performance of both sets of solutions against pre-determined project outcomes. Compare and contrast the corridors and evaluate under what conditions the different sets of solutions are appropriate and successful.

Estimated Project Cost: \$140,000

COMPASS Staff Work Days: 30
Recommended Local Match: to match grant requirements
Recommended Source of Match:
Potential Funding Sources:

Project Name: Pavement Management Inventory and Plan, Canyon County

Project Type: Long-range plan enhancement

Project Description: Inventory of arterials and collectors conducted for a pavement condition index for jurisdictions not currently conducting such inspections in Canyon County. Establish baseline data for PCI information, establish reporting protocols and collaboration of reporting consistency between the jurisdictions and procure and support software purchase and training to enable jurisdictions to perform predictive budgeting for their pavement management programs. Set up an inspection interval and decision matrix for treatments individualized to the jurisdictions that can also be rolled up to county-level reporting of asset and financial information.

Estimated Project Cost: \$400,000-550,000, additional in subsequent years for further inspection

COMPASS Staff Work Days: 65

Recommended Local Match: to match grant requirements

Recommended Source of Match: local agencies

Possible Funding Sources: STP-U, SHRP2

Project Name: Walk/Bike ability Effects on Housing Prices

Project Type: Long-range plan enhancements

Project Description: Perform analysis to understand the economic impact of walking and bicycling communities on housing prices

Estimated Project Cost: \$35,000

COMPASS Staff Work Days: 25

Recommended Local Match: to match grant requirements

Recommended Source of Local Match:

Possible Funding Sources:

Project Name: Economic Impact of Bicycle/Pedestrian Infrastructure

Project Type: Long-range plan enhancements/bicycle/pedestrian planning

Project Description: Perform a before-and after-analysis of the economic influence of bike lanes, greenbelts and more to local businesses and communities. Create a report and quick guide, along with a distribution plan to reach decision makers and elected officials.

Estimated Project Cost: \$30,000

COMPASS Staff Work Days: 20

Recommended Local Match: to match grant requirements

Recommended Source of Match:

Possible Funding Sources: Safe Routes to School, Highway Safety Improvement Program, Robert Wood Johnson, Advocacy Advance, People for Bikes, 5311

Project Name: GIS Upgrade for pathway and sidewalk centerline network

Project Type: Technical Services

Project Description: Upgrade COMPASS' network to include a pathway and sidewalk centerline network and allow incorporating data on condition, surface type, and walkability into future analysis. Map and incorporate existing jurisdictional data into the network thus enabling evaluation of connectivity and ADA accessibility.

Estimated Project Cost: \$150K

COMPASS Staff Work Days: 60

Recommended Local Match: to match grant requirements

Recommend Sources of Match: membership dues

Possible Funding Sources:

Project Name: I-84 Detour Plan

Project Type: Technical Services

Project Description: ITS detour plans describe the provisions for operation and detours during construction. Coordination of construction impacts among multiple jurisdictions will be required to develop the updated plan and corresponding detour maps. Detour routes will display roadway segments, route direction, traffic signals, roundabouts and stop signs. Criteria will be provided to assist in determining detour routes including: use of major parallel corridors, shortest distance between exit and re-entry, and maximum utilization of existing signalized intersections. Effects of a disaster and mitigation options will be examined, especially the effect on freight movement.

Estimated Project Cost: \$105,000

COMPASS Staff Work Days: 25

Recommended Local Match:

Recommended Source of Match:

Possible Funding Sources:

Project Name: Bicycle/Pedestrian Safe Routes Challenge

Project Type: Bicycle and Pedestrian Planning

Project Description: Incorporate portable automated bicycle/pedestrian counting technology to demonstrate a potential non-traditional planning use and highlight routes to schools that could be improved. Select one-to-two schools in the area to participate and perform before and during counts of active trips combined with outreach/education about safe routes to school. Then have classrooms or schools compete against each other for who can have the most bicycle/pedestrian trips over a week. Overall trends can be analyzed using teacher reporting/bike rack counts/and the data from the counters.

Estimated Project Cost: Total \$20,000 direct costs. (\$10,000 in grants awarded to Safe Routes to School and the participating school: \$6,000 for 20 bike racks and 2 fix it stations, \$1,000 for 40 kids helmets, \$1,000 for 10 bikes, \$500 for 10 scooters, and \$1,500 for prizes and other encouragement materials, and other education needs as a result of the data findings.)

COMPASS Staff Work Days: 12 Work Days (8 days coordination, and counter set up, 4 days data examination and reporting)

Recommended Local Match: to match grant requirements

Recommended Source of Match:

Possible Funding Sources: The Whittenberger Foundation, PacificSource Healthy Life Schools Challenge

Project Name: Bicycle/Pedestrian Vendor-Supplied Data

Project Type: Bicycle/Pedestrian Planning

Project Description: Crowdsourced bicycle/pedestrian data via mobile device applications (Data Acquisition)

Estimated Project Cost: \$7,500 annually

COMPASS Staff Work Days: 10 work days annually (5 GIS mapping cleanup/update, 5 map creation and analysis and requested)

Recommended Local Match: N/A

Recommended Source of Match: N/A

Possible Funding Sources:

Project Name: Bicycle/Pedestrian Automated Counter Purchase

Project Type: Bicycle/Pedestrian Planning

Project Description: Purchase additional permanent and portable bicycle/pedestrian counters in FY2017 to further expand the regional count effort. Final locations to be pending Active Transportation Work Group input but may include: Stoddard Trail, 11th Ave Bridge-Nampa, Greenbelt, Plymouth Bridge, Luby Park-Caldwell, Main St Bridge-Middleton, Greenbelt-Star, Tully Park, Five Mile Canal-Meridian, Shamrock Bikeway, Foothills, Federal Way Pathway-Boise, Greenbelt-Garden City.

Estimated Project Cost: \$70,000 (\$36,000, 6 permanent counters at \$6,000 each including install; \$8,000, 4 portable on-street bike counters; \$26,000, 4 portable off-street bicycle/pedestrian counters)

COMPASS Staff Work Days: 63 work days (15 work days for permanent counters, 3 for installation, 1 per month of data collection and cleanup); 48 work days for portable counters (3 per month for two installations/removals, 1 per month for data collection and cleanup)

Recommended Local Match: To match grant requirements

Recommended Source of Match:

Possible Funding Sources:

Project Name: Bike Fix-It Stations

Sponsor: COMPASS and partner cities

Estimated Project Cost: \$5,000- \$10,000

Description: Bike fix-it stations in high activity area, such as downtowns or greenbelts. Grant request would fund 2 stations. Note: the Active Transportation Workgroup discussed the possibility of multiple fix-it stations for a single grant

COMPASS Staff Work Days: 2

Recommended Local Match:

Recommended Source of Match:

Possible Funding Source: Idaho Community Foundation, MDU Resources Foundation, Union Pacific Foundation, Whittenberger Foundation

Project Name: Boise River Greenbelt Analysis

Project Type: Bicycle/Pedestrian Planning

Project Description: Compile an analysis of extending the greenbelt to the Snake River, locate easements, best routes, connections to nearby cities, next steps for agencies. Next steps will include cost estimates for gaps and funding options.

Estimated Project Cost: \$200,000

COMPASS Staff Work Days: 120

Recommended Local Match: to match grant requirements

Recommended Source of Match:

Possible Funding Sources:

Member Agency Projects

During February 2015, COMPASS staff met with member agencies to discuss project needs and COMPASS services. In August 2015, COMPASS staff followed up with those member agencies inquiring as to priority projects and if the member agency would like assistance in pursuing outside funding. The member agencies who have requested this assistance for projects are listed in this section.

For member agency projects, the first step after adoption of the funding plan will be to develop a full project description and scope. If project development is needed, COMPASS staff will work with the member agency to either refer the project to the COMPASS Project Development Program, or assist in the project readiness for application. COMPASS staff will research funding opportunities, communicate those to member agencies and provide varying level of grant writing and administration as mutually agreed to with the individual member agencies.

The Project Development Program that was developed to transform ideas into well-defined projects with cost estimates, purpose and needs statements, environmental scans and public information plans. Projects are developed to ensure readiness for state and federal funding. Four projects were selected for FY2015, and reports will soon be completed. These four projects are the first priority for grant research and writing as all components for a successful application will be available.

Project Development Program Projects

City of Eagle - Bicycle/Pedestrian Bridge Boise River/Eagle Road

City of Caldwell- Ustick Widening, Montana to Indiana, pedestrian improvements, Ustick/Montana intersection

City of Boise- Eckert Underpass on Greenbelt-

City of Parma- Main Street improvements/ Stormwater and Pedestrian Facilities

Member Agency Projects for Grant Assistance

Garden City

- Implementation of the FHWA Bike and Pedestrian Assessment Report for Chinden Blvd.

Boise

- Land use planning for State Street (Transit Oriented/Supportive Development, etc.)

BSU

- LED garages/ parking lots
- Solar roads demonstration project
- Bicycle infrastructure- parking and access, secure bike facilities coordinated with the 2010 campus circulation plan to increase pedestrian walkways on campus and bike paths); need connectivity from campus to downtown campus
- Public transportation amenities on campus

Kuna

- Downtown revitalization
- Pathways for recreation and transportation

Meridian

- Pedestrian and bicycle connectivity and street lighting on Eagle Road
- Rails with Trails planning and projects
- Streetscape at 2nd and Idaho at Community Center
- Parks and pathway projects and amenities

Parma

- Improvements to storm drainage system and sewer system
- Extension of airport runway
- Updates to water line system, increase capacity and flow
- Pedestrian improvements downtown and safe routes to schools

VRT

- Bike amenities for Boise Main Street Station

ITD

- Interstate I-84 in Canyon County
- Environmental Work on Chinden/Eagle Intersection

COMPASS BOARD AGENDA ITEM VII-D

DATE: October 19, 2015

Topic: Resolution 02-2016 Amendment the FY2015-2019 and FY2016-2020 Regional Transportation Improvement Programs

Request/Recommendation:

Staff seeks COMPASS Board adoption of Resolution 02-2016 (Attachment 1) amending the FY2015-2019 and FY2016-2020 Regional Transportation Improvement Programs (TIP). Staff requests to amend both TIP programs due to timing of federal approval of the FY2016-2020 TIP, which is not expected until approximately December 2015. Action on both programs at the same time allows processing of the changes in the first quarter of the fiscal year. The Regional Transportation Advisory Committee (RTAC) recommended these amendments on September 23, 2015.

Background/Summary:

There are three sets of actions recommended for approval. The details of requested actions are provided as Amendment #8 for the FY2015-2019 TIP and Amendment #1 for the FY2016-2020 TIP. Details are provided in the attachment to the resolution. Below is a summary of the requests:

Requests by Ada County to remove a project and ITD to add a project:

- Ada County requested removal of the **Warm Springs Pathway project (Key Number 18895)** from the Transportation Alternatives Program (TAP)-Statewide program (also known as Community Choices). The County was uncomfortable with the federal agreements and requirements necessary to use these funds. Ada County staff will continue to search a non-federal source of funding. The project will be considered "unfunded" when removed from the federal-aid program.
- ITD requested to add a rail crossing project at SH-19 at **Roedel Avenue in the City of Caldwell (Key Number ORN19682)**. Funding was available in the rail program, and this crossing is in need of repair and flashing lights. The speed limit on SH-19 is 55 miles per hour, and the area frequently has foggy weather conditions. Boise Valley Railroad staff must flag the intersection when fog is present. Railroad staff requested Idaho Operation Lifesaver request the improvements from ITD.

A public involvement period and amendment process are required when projects are proposed to be removed or added. The public comment period was open September 8 through September 22, 2015. Two inquiries for additional information were requested, but no comments were received.

Requests to release funds through TMA Balancing Actions:

Several projects in the TMA programs need to release funding for various reasons. These proposed releases total \$1,467,788 in the STP-TMA program. Due to key project actions occurring in late September 2015, staff recommends waiting until the October 28, 2015, RTAC meeting to recommend re-programming of these funds in the Boise Urbanized Area. All local funds released are returned to the project sponsor.

- **ACHD's Capital Maintenance project from FY2013 (Key Number 11581)** is ready for closeout. The project is able to release \$5,350 in STP-TMA funds and \$73,373 in ACHD local funds.
- **ACHD's Capital Maintenance project from FY2015 (Key Number 12363)** had a low bid on this project, which came in less than the engineer's estimate and programmed amount. The project needs to release \$1,270,438 in STP-TMA funds.
- **Travel Survey and Transit-On-Board Data Collection, COMPASS (Key Number 13048)** project scope change to focus on transit-on-board data collection only. The project is able to release \$192,000 in STP-TMA funds.

Public involvement is not necessary for these actions.

Delay the High Capacity Corridor Study:

RTAC recommended delaying the High Capacity Corridor Study from FY2018 to Preliminary Development, which causes a "domino effect" in the balancing process. In order to delay the High Capacity Corridor Study, the following projects are also affected.

- ACHD proposes to remove the **Adaptive Signal Application project around the Boise Town Square mall area (Key Number 13901)** in the TIP Update in summer 2016 and swap this project for additional maintenance segments in FY2019. ACHD plans to fund the adaptive signal project using local funds. It is acceptable for preliminary development to be over programmed.
- The delay of the High Capacity Corridor Study allows a portion of advance construction funds to advance on the **State Street and Collister project (Key Number 13481)**, saving ACHD "up-front" advance construction costs on this project. There is no change to the project total.
- **ACHD's Capital Maintenance project in FY2019 (Key Number 13903)** would increase by \$1 Million, but that also means design in FY2017 needs to increase to cover the new construction segments.
- The **Communities in Motion Update project for COMPASS (Key Number 13047)** has funds split across two years, the FY2017 funds would advance to FY2016 putting all funds in one year. There is no change in the project total.

Public involvement is not necessary for these actions.

Implication (policy and/or financial):

A summary of implications per set of actions is explained below:

Requests by Ada County to remove a project and ITD to add a project:

- The removal of the Ada County project could result in losing funds in the region (Ada and Canyon Counties) because the project is funded with TAP-Statewide funding, a statewide competitive program managed by ITD Headquarters staff. ITD staff balances the program considering statewide needs, with the focus of advancing projects, rather than adding funds for cost increases.

- The addition of the rail crossing improvements and repairs in the City of Caldwell brings additional funding to the region from a statewide program for rail improvements.

Requests to release funds through Balancing Actions:

Federal Highway Administration funds must be obligated in the year they are available. All documentation for an obligation must be submitted by March 1st. Any needed reprogramming of available funds should occur as early in the fiscal year as possible to allow sponsors to meet deadlines and plan for local budgetary adjustments.

Delay the High Capacity Corridor Study:

Normally out-year changes (those beyond the current year) would hold until the TIP Update process. However, ultimately these changes affect funding in FY2016. Therefore, the actions need to occur as soon as possible to allow sponsors to meet deadlines and plan for local budgetary adjustments.

Preliminary development will be over programmed; however, there is a plan to convert one federal-aid project to locally-funded in the TIP update process. The program, including preliminary development, will be balanced in the Draft FY2017-2021 Regional Transportation Improvement Program, which is scheduled for COMPASS Board action in August 2016.

More Information:

- 1) Attachment 1 – Resolution 02-2016
- 2) For detailed information contact: Toni Tisdale, Principal Planner, at 475-2238 or ttisdale@compassidaho.org.

TT:nb T:\FY15\600 Projects\685 TIP\FY1620TIP\1501019mmoBDTIPamend1.docx

RESOLUTION NO. 02-2016

FOR THE PURPOSE OF AMENDING THE FY2015-2019 AND FY2016-2020 REGIONAL TRANSPORTATION IMPROVEMENT PROGRAMS

WHEREAS, the Community Planning Association of Southwest Idaho has been designated by the Governor of Idaho as the metropolitan planning organization responsible for transportation planning in Ada and Canyon Counties;

WHEREAS, the Moving Ahead for Progress in the 21st Century (MAP-21) Act, Title 23 United States Code Section 134, and Title 49 United States Code Section 5303 requires metropolitan planning organizations to develop and approve a Transportation Improvement Program;

WHEREAS, MAP-21, Title 23 United States Code Section 134, and Title 49 United States Code Section 5303 require projects contained in the Transportation Improvement Program to be financially constrained;

WHEREAS, the 1990 Clean Air Act Amendments requires all transportation plans and programs in nonattainment or maintenance areas demonstrate conformity to applicable state implementation plans for air quality improvement;

WHEREAS, no additional review for air quality conformity is necessary for this action;

WHEREAS, MAP-21, Title 23 United States Code Section 134, and Title 49 United States Code Section 5303 requires Transportation Improvement Programs be developed and amended in consultation with all interested parties;

WHEREAS, a public comment period was open between September 8 and September 22, 2015, for the portion of the amendment that required public comment;

WHEREAS, the Community Planning Association of Southwest Idaho desires to take timely action to ensure the availability of federal funds;

WHEREAS, the Community Planning Association of Southwest Idaho developed this amendment to the FY2015-2019 and FY2016-2020 Regional Transportation Improvement Programs in compliance with all applicable state and federal regulations; and

WHEREAS, the attached table dated July 28, 2015, details the amendment to the FY2015-2019 and FY2016-2020 Regional Transportation Improvement Programs.

NOW, THEREFORE, BE IT RESOLVED, that the Community Planning Association of Southwest Idaho Board of Directors approves the amendment to the FY2015-2019 and FY2016-2020 Regional Transportation Improvement Programs.

DATED this 19th day of October 2015.

APPROVED:

By: _____
Garret Nancolas, Chair
Community Planning Association
of Southwest Idaho Board of Directors

ATTEST:

By: _____
Matthew J. Stoll, Executive Director
Community Planning Association
of Southwest Idaho

T:\FY16\900 Operations\Board\2016 Resolutions\Resolution 02-2016.docx

Amendment #8 FY2015-2019 Regional Transportation Improvement Program AND
 Amendment #1 FY2016-2020 Regional Transportation Improvement Program
 Per Ada County and ITD Staff, July 28, 2015

Key No	Project	Scheduled Costs (including Match) (costs in \$1,000)							
		Cost year	PE	PEC	RW	UT	CE	CN	SUM
18895	Pathway, Warm Springs, Ada County	2016		ϑ (101)				261 0	261 (101)
	Funding Source: Community Choices	2017						178 0	178 0
	This project will design, reconstruct and improve 1.3 miles of the Warm Springs Pathway, a parallel alternative transportation route for bicyclists and pedestrians along Warm Springs Avenue in Ada County. This project includes piping and covering a portion of the open irrigation canal and widening that portion of the trail from 8-feet to 10-feet. Remove project at the request of Ada County and ITD staff. De-obligate FY2015 funds that were obligated last year. Funds will be returned to Community Choices program.	2018							0
		2019							0
		2020							0
		PD							0
		SUM	0	ϑ (101)	0	0	0	0	439 0
	18895	Pathway, Warm Springs, Ada County	2016	ϑ (10)	ϑ (138)				646 0
Funding Source: Local Participating		2017							0
Same as above. Remove project at the request of Ada County and ITD staff. De-obligate FY2015 funds that were obligated last year. Funds submitted will be returned to Ada County.		2018							0
		2019							0
		2020							0
		PD							0
		SUM	ϑ (10)	ϑ (138)	0	0	0	0	646 0

Per ITD Staff, August 20, 2015

Key No	Project	Scheduled Costs (including Match) (costs in \$1,000)							
		Cost year	PE	PEC	RW	UT	CE	CN	SUM
ORN 19682	SH-19, Roedel Avenue Railroad Crossing, Caldwell	2016							0
	Funding Source: Rail	2017	ϑ 8						ϑ 8
	Project will install cantilever signals and repair and replace the crossing surface. Add project. Funds are covered by available federal rail safety funding.	2018					ϑ 5	ϑ 375	ϑ 380
		2019							0
		2020							0
		PD							0
		SUM	ϑ 8	0	0	0	ϑ 5	ϑ 375	ϑ 388

(Continued)

Per RTAC to Delay High Capacity Study, September 23, 2015

Key No	Project	Scheduled Costs (including Match) (costs in \$1,000)							
		Cost year	PE	PEC	RW	UT	CE	CN	SUM
13046	Planning, High Capacity Corridor Alternatives Analysis	2016							0
	Funding Source: STP-TMA	2017							0
	Study to identify and analyze options to improve mobility in a priority corridor to be determined in the regional long-range transportation plan. The study will evaluate all reasonable transit alternatives. Per COMPASS Board direction, this project will be re-evaluated after the 2014 and 2015 state legislative sessions.) Delay \$1,000,000 in PEC from FY2018 to PD. FY2018 funds move to KN 13481. PD funds are covered by KN 13901. No change to total.	2018			1000				1000
		2019			0				0
		2020							0
		PD			0				0
		SUM		0	1000	0	0	0	0
13047	Planning, Communities in Motion Update, COMPASS	2016		227					227
	Funding Source: STP-TMA	2017		307					307
	Fund specific studies and public involvement activities related to updating <i>Communities in Motion</i> , the regional long-range transportation plan. Costs only include direct expenses for the project (no staff time). Advance \$80,000 from FY2017 to FY2016. FY2016 funds are covered by available funds in the program. FY2017 funds move to KN 13903. No change to total.	2018			80				80
		2019			0				0
		2020							0
		PD							0
		SUM		0	307	0	0	0	0
13903	Capital Maintenance, ACHD – FY2019	2016							
	Funding Source: STP-TMA	2017	20	405					425
	Supplement the local maintenance program, to complete work such as overlays on arterials and collectors in the Boise Urbanized Area. Increase PEC in FY2017 by \$80,000. Increase CE in FY2019 by \$150,000 and CN by \$850,000. FY2017 funds are covered by KN 13047. FY2019 funds are covered by KN 13481.	2018			485				505
		2019					598	3387	3985
		2020					748	4237	4985
		PD							0
		SUM		20	405	0	0	598	3387
			485			748	4237	5490	

Key No	Project	Scheduled Costs (including Match) (costs in \$1,000)							
		Cost year	PE	PEC	RW	UT	CE	CN	SUM
13481	State Street and Collister Drive Intersection, Boise	2016			548				548
	Funding Source: STP-TMA	2017							0
	Intersection improvements at State Street and Collister Drive in the City of Boise.	2018					1255	5167	6422
		2019						1949 6167	1949 7422
		2020						949	949
	Increase CN in FY2018 by \$1,000,000 and decrease CN in FY2019 by \$1,000,000. FY2018 funds covered by KN 13046. FY2019 funds move to KN 13903. No change to total.	PD							0
		SUM		0	0	548	0	1255	7116

PE = Preliminary Engineering

PEC = Preliminary Engineering Consultant

RW = Right-of-Way

UT = Utilities

CE = Construction Engineering

CN = Construction

FY = Fiscal Year

KN = Key Number

STP-TMA – Surface Transportation Program – Transportation Management Area (Boise Urbanized Area)

T:\FY15\600 Projects\685 TIP\FY1620TIP\Amendments\Amend1.docx

COMPASS BOARD AGENDA ITEM VII-E

Date: October 19, 2015

Topic: Policy for Project Cost Overruns in the *Communities in Motion* (CIM) Implementation Grant Program

Request/Recommendation:

Staff seeks COMPASS Board approval of a proposed policy for project cost overruns in the CIM Implementation Grant Program.

Summary:

The COMPASS Board approved \$21,375 for additional reimbursements to cover cost overruns on approved CIM Implementation Grant Program projects, as part of the FY2016 Unified Planning and Work Program and Budget (UPWP). To date, the COMPASS Board has approved 13 projects for funding in the CIM Implementation Grant Program, for fiscal years 2014, 2015 and 2016. Four of the projects are completed or providing their final report this month and the remaining nine are in process.

The CIM Implementation Grant Program provides direct support to COMPASS member agencies in local projects consistent with regional goals in *Communities in Motion 2040*. Projects may be a plan, regulatory tool, construction, maintenance, concept/design, etc., and may be a stand-alone project or a phase/component of a larger project.

Approval of a policy is requested to direct staff in addressing requests for additional reimbursements that may arise as projects are completed. The intent of allowing requests of reasonable cost overruns is to ensure these projects are completed on time and at the original application scope. Programmatic changes will occur in the future to assist member agencies in better cost estimates and project management if needed. Attachment B defines the proposed policy and procedures.

Highlights include:

- For more than \$5,000, or more than 30% of the original grant, COMPASS Board approval is required.
- The Executive Director may approve requests of up to 30% of the original grant, but no more than \$5,000.
- Documentation is required for all requests.
- Match rate must be maintained on all requests.

See Attachment B for the recommended process and additional details.

Implication (policy and/or financial):

Approving the policy will allow the COMPASS Board and staff to process cost overrun requests as they occur and assist with expedited delivery of CIM Implementation Grant projects.

More Information:

1. Attachment A: List of FY2014, FY2015 and FY2016 Projects
2. Attachment B: Proposed Overrun Reimbursement Policy and Procedure
3. For detailed information contact Don Matson at 475-2240 or dmatson@compassidaho.org.

T:\FY16\600 Projects\685 104 CIM Implementation Grants\BoardMemo-CIMGrantOverruns-19Oct2015 SM.docx

**Attachment A:
CIM Implementation Grant Program Projects**

Sponsor	FY2014 Projects	Amount
City of Kuna	Indian Creek Greenbelt Extension (<i>project complete</i>)	\$ 40,000
City of Middleton	Concord Street Sidewalk/Willow Lane Path Design (<i>project complete</i>)	\$ 30,000
City of Wilder	Downtown Chip Seal (<i>construction complete – final report expected October 2015</i>)	\$ 27,427
FY2014 Total		\$ 97,427

Sponsor	FY2015 Projects	Amount
City of Eagle	Plaza Street Extension Design Project	\$ 14,266
City of Nampa	Library Block Bike Corral	\$ 4,605
City of Parma	Grove Avenue Accessibility–Sidewalk Repair	\$ 5,946
City of Parma	Grove Avenue (Downtown) Plan	\$ 8,683
City of Wilder	3 rd Street Improvements (<i>project complete</i>)	\$ 16,500
FY2015 Total		\$ 50,000

Sponsor	FY2016 Projects	Amount
Ada County	Boise River Greenbelt Bollards and Striping	\$ 9,210
Boise State University	Bike Pump Stations	\$ 3,767
	Contraflow Bike Lane, Cesar Chaves Blvd.	\$ 10,729
	Covered Bike Parking	\$ 13,919
City of Kuna	Downtown Revitalization Plan	\$ 16,000
FY2016 Subtotal		\$ 53,625
Allowance for Cost Overruns		\$ 21,375
FY2016 Total		\$ 75,000

**Attachment B:
CIM Implementation Grant Program
Proposed Policy and Procedure
for Reimbursement of Cost Overruns**

If a project under the CIM Implementation Grant Program experiences cost overruns, the sponsoring agency may apply to COMPASS for additional reimbursement. The requirements and procedure shall be as follows:

1. If unforeseen circumstances and costs arise, project sponsor agency will notify COMPASS during project construction/design in monthly reports.
2. If funds are available and set aside for cost overruns in the CIM Implementation Grant Program in the current fiscal year, sponsor agency may submit a request for additional reimbursement with the final project report.
 - a. Request may not be submitted before Final Project Report as described in the project Reimbursement Agreement.
 - b. Sponsor agency will use a form provided by COMPASS to provide sufficient detail for consideration.
 - c. Request will include budget, copies of invoices, and description/basis for request.
3. The project sponsor agency match rate for contributions to the cost overrun must be equal to or greater than the match rate approved at the time of original application.
4. Requests for additional reimbursement for cost overruns of more than 30% of the original grant amount, or greater than \$5,000, may only be approved by the COMPASS Board of Directors. The COMPASS Executive Director is authorized to process and approve a reimbursement for up to 30% of the original grant amount, but not to exceed \$5,000. In the case of denial by the Executive Director, sponsor agency may appeal to the COMPASS Board.
5. If a request is to be submitted to the COMPASS Board for consideration, it must be submitted 30 days in advance of the next regular COMPASS Board meeting. The COMPASS Executive Director may grant an exception for less than 30 days' notice.
6. Requests for additional reimbursement will be processed on a first come, first served basis as long as funds are available in the program in that fiscal year and are not committed to any other project.

PROGRAM NO.	
601	<p>UNIFIED PLANNING WORK PROGRAM DEVELOPMENT AND FEDERAL ASSURANCES</p> <p style="text-align: right;">MEGAN LARSEN</p> <ul style="list-style-type: none"> • Processed and tracked revenues and expenditures associated with Revision 3 of the FY2015 UPWP. • Tracked changes and announcements in the Federal Register and the Daily Digest. • Tracked announcements from funding resources to identify potential grants for COMPASS and member agencies. • Completed COMPASS' 2015 Title VI program review questionnaire and submitted to the Idaho Transportation Department.
605	<p>MULTI-MODAL PLANNING SUPPORT</p> <p style="text-align: right;">WALT SATTERFIELD</p> <ul style="list-style-type: none"> • Installed seven permanent bicycle/pedestrian counters in Eagle, Garden City, Meridian, and Boise (Capitol Boulevard, Eckert Bridge, Emerald Bridge, and Trestle Bridge). • Completed site visits to all eight permanent off-road counters and confirmed operation. • Installed portable bicycle counters in Nampa. • Attended ACHD and Nampa bicycle committee meetings. • Hosted an Active Transportation Workgroup meeting on September 9, 2015 to review the regional bicycle/pedestrian work plan and regional pathway mapping. • Participated in the Treasure Valley Cycling Alliance manual bicycle and pedestrian counting to develop additional data and to calibrate permanent counter data. • Hosted Foundation for Ada/Canyon Trails System (FACTS) meeting and provided status update on the bicycle/pedestrian counter installation and regional pathway mapping. • Submitted research on peer programs for the Mobility Design Challenge project on September 1, 2015. • Participated in Public Transportation Development Plan and System Analysis RFP evaluation with Valley Regional Transit on September 14, 2015. • Participated in Regional Coordination Council Orientation meeting on September 15, 2015. • Met with Valley Regional Transit staff to discuss Public Transportation Leadership Academy on September 15, 2015. • Participated in Boise Transit Planning Meeting on September 17, 2015.
620	<p>GROWTH AND TRANSPORTATION SYSTEM MONITORING</p> <p style="text-align: right;">CARL MILLER</p> <ul style="list-style-type: none"> • Continued tracking 2015 building permits for the Development Monitoring Report. • Continued development of the 2014 performance measure data. • Provide current population estimates to Ada County for precinct boundary realignments. • Evaluated several online dashboards for developing more user-friendly interactivity and social media applications.

PROGRAM NO.	
647	<p data-bbox="302 128 1008 159">REGIONAL GROWTH ISSUES AND OPTIONS</p> <p data-bbox="1317 163 1536 195" style="text-align: right;">CARL MILLER</p> <ul data-bbox="321 201 1503 474" style="list-style-type: none"> • Presented 2015 development tracking and reconciliation to the Demographic Advisory Committee on September 16, 2015, and to the Regional Transportation Advisory Committee on September 23, 2015. • Presented CIM 2040 2.0 demographic dataset to the Demographic Advisory Committee on September 16, 2015, and to the Regional Transportation Advisory Committee on September 23, 2015. • Produce CIM 2040 2.0 demographic dataset maps for the COMPASS website. • Received the Cube Land Implementation Feasibility Study from consultants.
653	<p data-bbox="302 485 886 516">COMMUNICATION AND EDUCATION</p> <p data-bbox="1373 520 1536 552" style="text-align: right;">AMY LUFT</p> <ul data-bbox="321 558 1528 1329" style="list-style-type: none"> • Updated the COMPASS web site; continued developing several new web pages to reflect new COMPASS programs and projects. • Posted 13 Facebook messages and 59 Tweets. • Tracked and facilitated issues related to COMPASS and transportation in and with news media. Issued two news releases and one media advisory; facilitated one interview on the installation of bicycle/pedestrian counters. • Continued transportation funding outreach campaign – continued social media campaign, placed funding display at the Caldwell Public Library, completed most filming for a short video on the importance of maintenance funding. • Accepted Leadership in Motion award nominations through September 30, 2015. • Hosted Maureen Bock and Colleen Gants in the final installment in the 2015 education series on September 24 and 25, 2015. The speakers presented on “OReGO” -- Oregon’s new vehicle miles traveled tax. • Completed a random household public opinion survey on COMPASS. • Hosted a brownfields grants workshop on September 18, 2015. • Continued work on a cartoon “video” describing COMPASS and its role in the Treasure Valley. • Completed the FY2015 COMPASS annual report. The report will be posted on the COMPASS website the first week in October 2015. • Continued to work with VRT staff on a “Public Transportation Academy” for local elected officials.

PROGRAM NO.	
661	<p data-bbox="302 128 748 159">COMMUNITIES IN MOTION</p> <p data-bbox="1279 163 1539 195" style="text-align: right;">LIISA ITKONEN</p> <ul data-bbox="321 201 1539 1148" style="list-style-type: none"> • Received and reviewed proposals for the performance measure framework RFO as part of the SHRP2 project. • Hosted the first meeting of the COMPASS Freight Advisory Workgroup on September 15, 2015. • Participated in Steering Committee meeting for Kuna Downtown Revitalization plan on September 17, 2015. • Met with City of Wilder staff on September 24, 2015, to review progress on two grant projects, Downtown Chip Seal and 3rd Street Improvements, reporting requirements and requests for reimbursement. • Worked with City of Parma and on Grove Avenue Pedestrian Improvements project and extension of construction easements for work in October 2015. • Created and distributed reporting and tracking templates for grant recipients to facilitate better reporting and easier tracking of labor for in-kind match. • Received the public transportation network analysis from Kittelson and Associates. • Continued work on a "board game" depiction describing the process needed to instigate a more robust public transportation system in the Treasure Valley. The "game" is designed to help decision-makers and the public understand the complexity of the process in an easy to understand manner. • Continued the "Treasure Valley On the Go!" photo contest to generate public interest in the four components of CIM 2040 2.0: bicycle/pedestrian, freight, roadways, and public transportation. • Receive notice that COMPASS will receive a 2015 Grow Smart award for <i>Communities in Motion 2040</i>. The award will be presented on November 12, 2015. • Presented the agricultural freight study at the "Environmental Analysis in Transportation Workshop," San Diego, CA, September 20-23, 2015.

PROGRAM NO.	
685	<p data-bbox="302 128 1321 163">REGIONAL TRANSPORTATION IMPROVEMENT PROGRAM (TIP)</p> <p data-bbox="1295 163 1536 199" style="text-align: right;">TONI TISDALE</p> <ul data-bbox="318 199 1536 1224" style="list-style-type: none"> • Attended a recap of ITD's new OTIS process for TIP and ITIP development on September 3, 2015. • Met with ACHD staff on September 10, 2015, to discuss TMA balancing options. • Submitted the final TIP and air quality conformity demonstration to ITD, Federal Highway Administration, and Federal Transit Administration on September 23, 2015. • Met with City of Boise staff on September 24, 2015, regarding their pathway project and current funding situation. • Prepared the rural prioritization packet for the meeting scheduled on October 7, 2015. • Prepared and processed Amendment #7 and Administrative Modifications #14-#16. • Reviewed ITD's final ITIP projects and determined changes needed based on final information from ITD, and started processing those changes. • Researched peer agency policy regarding TIP amendment policies and drafted recommendations to meet new requirements by the Federal Highway Administration. • Started researching peer agency policies on funding National Highway System projects. • Continued working on a method to incorporate performance measures into the TIP (called TIP project achievement) • Continued updating the annual outreach materials in an effort to make the summer outreach sessions more efficient for member agencies, and started scheduling meetings with transportation jurisdictions in Ada and Canyon Counties. • Resolved an issue with the Federal Transit Administration regarding how COMPASS conducts outreach on Valley Regional Transit's annual program of projects on behalf of Valley Regional Transit.
686	<p data-bbox="302 1224 1005 1260">PROJECT/SCOPE DEVELOPMENT PROGRAM</p> <p data-bbox="1312 1260 1536 1295" style="text-align: right;">DON MATSON</p> <ul data-bbox="318 1295 1536 1793" style="list-style-type: none"> • Met with City of Parma and consultant on September 3, 2015, to discuss Main Street drainage issues and potential funding sources. • Met with Garden City staff on September 16, 2015, to discuss project needs in Chinden-US 20/26 corridor. • Met with City of Meridian staff on September 17, 2015, to discuss project needs on Eagle Road and parks projects for development in the program. • Met with City of Caldwell staff and consultant on September 23, 2015, to discuss progress on Ustick widening study and determine performance measures on the project. • Reviewed and processed invoices from consultants on Project Development Program task orders. • Presented feasibility study results with consultant for the Boise River Bike/Ped Bridge project to, and received comments from, the City of Eagle Parks and Pathways Development Commission on September 23, 2015.
692	<p data-bbox="302 1793 1240 1829">REGIONAL ASSET and RESOURCE MAINTENANCE REPORT</p> <p data-bbox="1312 1829 1536 1864" style="text-align: right;">DON MATSON</p> <ul data-bbox="318 1864 1344 1932" style="list-style-type: none"> • Completed financial information analysis to update Transportation Improvement Program document.

PROGRAM NO.	
693	<p>GRANT RESEARCH AND ASSISTANCE</p> <p style="text-align: right;">DON MATSON</p> <ul style="list-style-type: none"> • Assisted VRT in second phase of grant application to PeopleForBikes for bike parking equipment at Main Street Station. • Completed Potential Grant Sources-Profiles document (currently 22 programs) for guidance on decisions when applying for grant funding.
701	<p>GENERAL MEMBERSHIP SERVICES</p> <p style="text-align: right;">SABRINA MINSHALL</p> <ul style="list-style-type: none"> • Provided a development checklist review for Myrtle Street Hotel (Boise). • Reviewed ACHD's draft FY2016-2020 Integrated Five-Year Work Plan and forwarded comments. • Participated in Steering Committee meeting for City of Kuna Downtown Revitalization plan on September 17, 2015. • Hosted brownfields grant training offered by Center for Creative Land Recycling and Idaho Department of Environmental Quality on September 18, 2015. • Participated in City of Eagle's Comprehensive Plan Review Committee.
702	<p>AIR QUALITY OUTREACH</p> <p style="text-align: right;">AMY LUFT</p> <ul style="list-style-type: none"> • Ran six air quality public service announcements on local television stations. • Provided a status report to the Air Quality Board and Idaho Department of Environmental Quality.
703	<p>GENERAL PUBLIC SERVICES</p> <p style="text-align: right;">AMY LUFT</p> <ul style="list-style-type: none"> • Provided information to the public on demographics, development, funding, and traffic issues. • Responded to a series of questions regarding transportation needs in Canyon County.
705	<p>TRANSPORTATION LIAISON SERVICES</p> <p style="text-align: right;">MATT STOLL</p> <ul style="list-style-type: none"> • Met with Amy Revis, ITD District III Engineer, on September 4, 2015, to coordinate efforts between COMPASS and ITD District III. • Attended the LHTAC Council workshop on September 10, 2015. • Met with Scott Frey, Federal Highway Administration, on September 14, 2015, regarding TIP amendment policy questions and updates on the freight studies and bicycle/pedestrian counter project. • Participated in the Caldwell Chamber of Commerce Transportation Committee meeting on September 14, 2015. • Participated in the Meridian Transportation Commission meeting on September 14, 2015. • Met with Councilmember Elaine Clegg on September 16, 2015 to coordinate on AMPO and City of Boise issues. • Attended the IT Board meeting on September 16, 2015. Attended via web-conference, as meeting was hosted in Rigby. • Met with Dave Wallace of ACHD on September 23, 2015 to coordinate efforts between COMPASS and ACHD. • Participated in Idaho APA Board meeting. • Participated in planning meetings for Idaho APA Conference.
720	<p>STATE STREET TRANSIT CORRIDOR IMPLEMENTATION</p> <p style="text-align: right;">DON MATSON</p> <ul style="list-style-type: none"> • No significant activity during September.

PROGRAM NO.	
760	<p data-bbox="302 128 695 159">LEGISLATIVE SERVICES</p> <p data-bbox="1325 163 1528 195" style="text-align: right;">MATT STOLL</p> <ul data-bbox="326 201 1528 516" style="list-style-type: none"> • Participated in relevant activities in support of Board legislative position statements. • Tracked and reported significant activity in federal and state transportation-related legislative issues. • Continued reviewing Moving Ahead for Progress in the 21st Century Act (MAP-21) and proposed rule-making to determine implications to COMPASS and its membership. • Attended City of Meridian’s initial meeting of US 20/26 Task Force on September 28, 2015.
761	<p data-bbox="302 516 834 548">BLUEPRINT FOR GOOD GROWTH</p> <p data-bbox="1198 552 1536 583" style="text-align: right;">SABRINA MINSHALL</p> <ul data-bbox="326 590 899 621" style="list-style-type: none"> • No significant activity in September.
801	<p data-bbox="302 625 656 657">STAFF DEVELOPMENT</p> <p data-bbox="1268 661 1528 693" style="text-align: right;">MEGAN LARSEN</p> <ul data-bbox="326 730 1528 1541" style="list-style-type: none"> • Attended “Let’s Talk Performance: Telling the Performance Story” webinar hosted by FHWA Office of Transportation Performance Management on September 22, 2015. • Attended “Shared Streets, Slow Streets” webinar hosted by the Association of Pedestrian and Bicycle Professionals on September 16, 2015. • Attended the Andrus Center Conference on Women and Leadership, Boise State University, September 9 – 11, 2015. • Attended the International Association of Public Participation annual conference, Portland, OR, September 9 – 11, 2015. • Attended the air quality conformity workshop hosted by EPA Region X, Seattle, WA, September 28 – 29, 2015. • Attended “Fundamentals of Business Communication” at the Center for Professional Development in Boise on September 30, 2015. • Attended the fall 2015 HEAL Idaho Regional Meeting on September 22, 2015. • Attended the TRB Environmental Analysis Transportation Workshop in San Diego, CA, September 20-23, 2015. • Attend the Brownfields and land recycling grant workshop sponsored by the Center for Creative Land Recycling on September 18, 2015. • Attended the “Methods to Identify and Map State Freight Economic Corridors based on Freight Intensive Land Uses webinar on September 2, 2015. • Completed continuing education credits for CPA certification via self-study. Topics included: Governmental Accounting, Governmental Financial Reporting, Federal Grants Management and Ethics.
820	<p data-bbox="302 1541 662 1572">COMMITTEE SUPPORT</p> <p data-bbox="1276 1577 1536 1608" style="text-align: right;">MEGAN LARSEN</p> <ul data-bbox="326 1614 1425 1682" style="list-style-type: none"> • Provided staff support to the COMPASS Board of Directors and standing committees.

PROGRAM NO.	
836	<p>REGIONAL TRAVEL DEMAND MODEL</p> <p style="text-align: right;">MARYANN WALDINGER</p> <ul style="list-style-type: none"> • Continued to provide additional assistance to ACHD on their Capital Improvement Plan update. • Posted up to date traffic counts and map on the COMPASS website. • Completed area of influence model runs for two proposed developments – one in Ada County and one in Canyon County. • Completed traffic count data collection in Caldwell at 28 locations. • Made progress on regional travel demand model development, calibration and validation documentation.
838	<p>ON-BOARD TRANSIT</p> <p style="text-align: right;">MARYANN WALDINGER</p> <ul style="list-style-type: none"> • Issued contract to consultant for the on-board transit survey • Provided necessary data to consultant to begin developing survey collection process, technology and methodology
842	<p>CONGESTION MANAGEMENT SYSTEM PROCESS</p> <p style="text-align: right;">MARYANN WALDINGER</p> <ul style="list-style-type: none"> • Continued developing data and analysis for the annual congestion management report. • Finalizing Congestion Management Process overview.
860	<p>GEOGRAPHIC INFORMATION SYSTEM MAINTENANCE</p> <p style="text-align: right;">ERIC ADOLFSON</p> <ul style="list-style-type: none"> • Maintained and created regional geographic data layers. • Created map documents for member agencies and the public. • Provided technical support for a variety of COMPASS processes. • Created tools and methodologies to support COMPASS UPWP projects.
862	<p>REGIONAL DATA CENTER IMPLEMENTATION</p> <p style="text-align: right;">ERIC ADOLFSON</p> <ul style="list-style-type: none"> • Continued work on Regional Data Center setup and server configuration. • Enabled automatic update of COMPASS internal data from Regional Data Center. • Participated on a conference call with MPO's throughout the Intermountain west regarding a super-regional data center concept and technical assistance through SHRP-2 funding.
991	<p>SUPPORT SERVICES LABOR</p> <p style="text-align: right;">MEGAN LARSEN</p> <ul style="list-style-type: none"> • Provided general accounting, human resources, and administrative support to the agency.

T:\FY16\900 Operations\Board\2015 Staff Activity Report\September 2015.docx

COMPASS BOARD AGENDA ITEM VIII-B

Date: October 19, 2015

Topic: Status Report – Current Air Quality Efforts

Background/Summary:

The information below provides an update on Treasure Valley air quality.

September Air Quality Monitoring:

The Idaho Department of Environmental Quality reported four days with air quality levels in the moderate category in the Treasure Valley during the month of September 2015.

- One day was attributable coarse particulate matter (PM₁₀) recorded in both counties.
- Three days were attributable to fine particulate matter (PM_{2.5}) recorded in Ada County.

YEAR TO DATE SUMMARY

The table below summarizes the number of good, moderate, and unhealthy to hazardous days recorded since January 1, 2006.

	Good	Moderate	Unhealthy to Hazardous	Total
2006	273	91	1	365
2007	227	125	12	364
2008	266	99	1	366
2009	277	83	5	365
2010	321	44	0	365
2011	260	99	6	365
2012	283	72	11	366
2013	276	81	8	365
2014	287	75	3	365
2015	212	49	12	273

Notes: 2008 was a Leap Year hence the extra day. In 2007, one day of data is missing for the month of May.

Air Quality Categories:

- Moderate: pollution in this range may pose a moderate health concern for a very small number of individuals.
- Unhealthy for Sensitive Groups: individuals with lung disease, children and older adults are considered sensitive and may experience health effects. The general public is unlikely to be affected.
- Unhealthy / Very Unhealthy: everyone may begin to experience health effects.
- Hazardous: the entire population is more likely to experience serious health effects.

Implication (policy and/or financial):

None.

More Information:

- 1) For more information contact: MaryAnn Waldinger, Principal Planner, at 475-2242 or mwaldinger@compassidaho.org
- 2) For detailed information contact Idaho Department of Environmental Quality: Michael Toole, Regional Airshed Coordinator, at 373-0550 or Michael.Toole@deq.idaho.gov

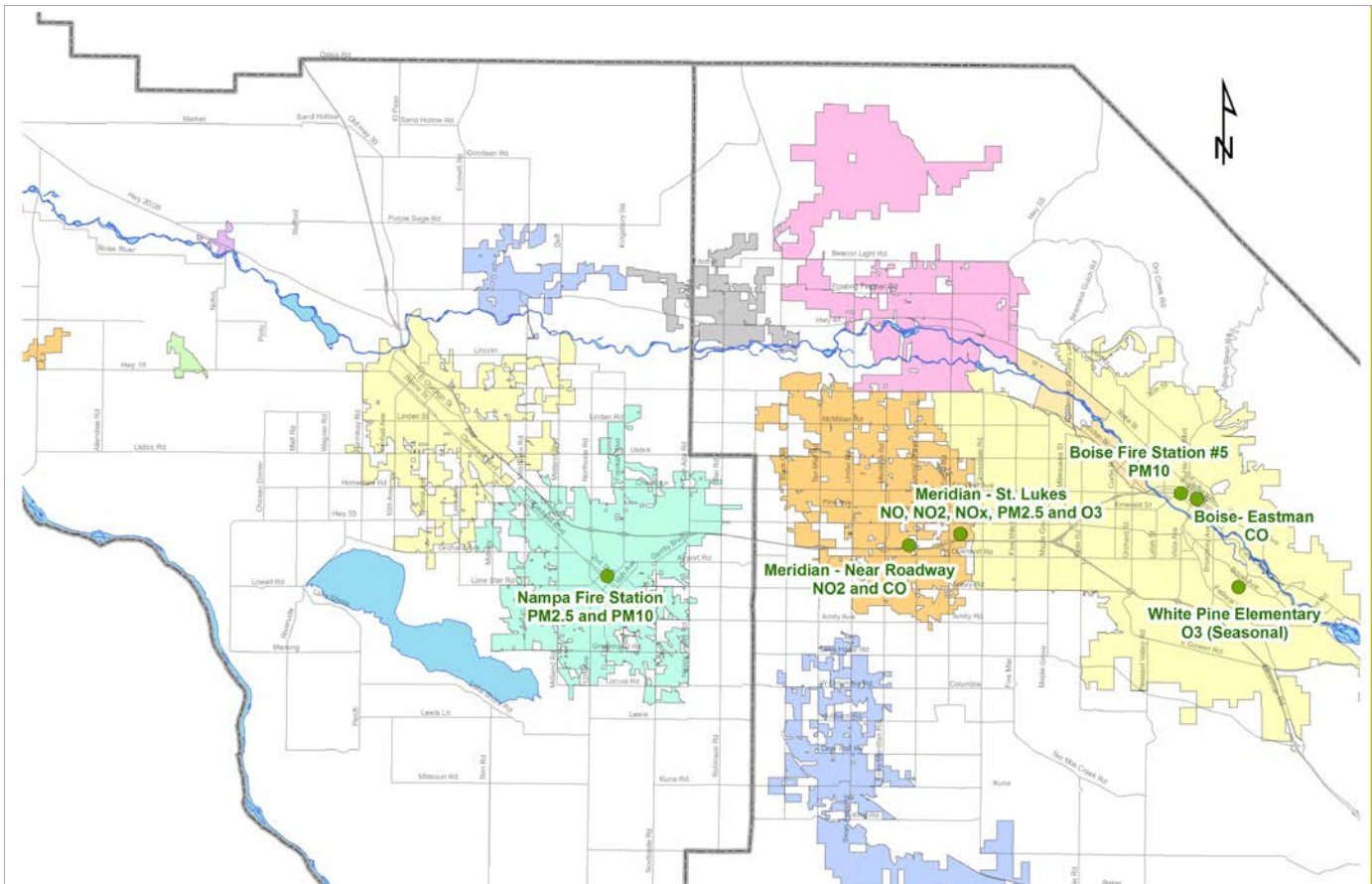


Figure 1: Map of air quality monitoring locations, Ada and Canyon County

Carbon Monoxide (CO)

A colorless, odorless, tasteless gas formed in large part by incomplete combustion of fuel. Human activities (i.e., transportation or industrial processes) are largely the source for CO contamination.

Oxides of nitrogen (NOx)

Oxides of nitrogen; a precursor (building block) of ozone. NOx is a generic term for mono-nitrogen oxides NO and NO₂ (nitric oxide and nitrogen dioxide). They are produced from the reaction of nitrogen and oxygen gases in the air during combustion, especially at high temperatures

Ozone (O3)

A colorless gas with a sweet odor. Ground-level ozone is not a direct emission from transportation sources. It is formed when volatile organic compounds, such as pesticides and solvents, and NOx combine in the presence of sunlight. Although the ozone in the upper atmosphere protects us from harmful ultraviolet rays, ground-level ozone is the main component of smog.

PM2.5

Fine particulate matter, particles smaller than 2.5 microns in diameter, which are more likely to lodge in human lungs than larger particles.

PM10

Course particulate matter, particles smaller than 10 microns in diameter, which are more likely to lodge in human lungs than larger particles.

DEMOGRAPHIC ADVISORY COMMITTEE

Attendance List

Member Agency/Name	Jan '15 No Mtg	Feb '15	Mar '15 No Mtg	Apr '15 No Mtg	May '15 No Mtg	June '15 No Mtg	July '15 No Mtg	Aug '15 No Mtg	Sept '15	Oct '15	Nov '15	Dec '15	TOTAL
General Members													
ACHD/ <i>C. Little</i>		1							1				
Ada County/M. Basham/ <i>B.Danielson</i>		1											
BSU/P. Zhu													
Canyon Co. Dev. Services / <i>J. Almeida/P. Nilsson/J. Van Dyke</i>		1							1				
Canyon Highway District No. 4/ <i>K. Knapp</i>													
City of Boise/ <i>B. Eggleston</i>		1							1				
City of Caldwell/ <i>B. Billingsley</i>		1											
City of Eagle/ <i>N. Baird Spencer</i>		1							1				
City of Garden City/ <i>J. Lowe</i>		1							1				
City of Kuna/ <i>W. Howell</i>													
City of Meridian/ <i>B. McClure</i>		1							1				
City of Middleton/ <i>D. Taylor</i>													
City of Nampa/ <i>N. Holm</i>													
City of Parma/ <i>N. Leigh</i>									1				
City of Star/ <i>N. Mitchell</i>													
IDEQ/ <i>D. Luft</i>													
ITD / <i>M. Wasdahl</i>		1											
Nampa Highway District #4/ <i>E. Shannon</i>													
Public Participation Committee/ <i>J. Ross</i>		1							1				
Valley Regional Transit/ <i>M. Havey</i>		1											
Ex officio Members													
Chamber of Commerce - Ada County/ <i>M.Tate</i>													
Chamber of Commerce- Canyon Co./ <i>T. Kasper</i>													
Development Community - Ada County/ <i>C.Findlay</i>													
Major Utilities / <i>B. Snow/B. Defenbach</i>													
Development Community - Canyon County/ <i>G. Manship</i>		1											

REGIONAL TECHNICAL ADVISORY COMMITTEE

Attendance List

Member Agency/Name	Jan '15	Feb '15	Mar '15	Apr '15	May '15	June '15	July '15 No Mtg	Aug '15	Sept '15	Oct '15	Nov '15 No Mtg	Dec '15	TOTAL
General Members													
<i>ACHD/T.Ferch/ J. Lucas</i>	1	1		1	1	1		1	1				7
<i>Ada County /M. Basham/M. Leatherman</i>	1		1	1	1	1		1					6
<i>BSU/N. Nimmmons</i>	1		1	1		1		1	1				6
<i>Canyon County / P. Nilsson/D. Root/C. Samples</i>		1	1	1	1	1				1			6
<i>Canyon Highway District #4/C. Hopper</i>	1			1		1				1			4
<i>City of Boise/ D. Fluke/ K. Lacey/K. Gallagher</i>	1	1	1	1	1	1		1	1				8
<i>City of Caldwell/R. MacDonald</i>	1	1				1		1					4
<i>City of Eagle/N. Baird Spencer</i>	1	1	1	1		1		1					6
<i>City of Garden City/J. Thornborrow</i>										1			1
<i>City of Kuna/W. Howell</i>	1			1	1			1	1				5
<i>City of Meridian/B Parson, C. Hood</i>	1	1	1	1	1	1		1	1				8
<i>City of Middleton/D. Taylor</i>													0
<i>City of Nampa/J. Barnes/C. Bowman</i>	1	1	1	1	1			1	1				7
<i>City of Parma/N. Leigh</i>		1	1			1		1	1				5
<i>City of Star/N. Mitchell</i>													0
<i>IDEQ/M. Toole</i>	1	1		1									3
<i>ITD/Amy Schroeder</i>		1	1	1		1		1	1				6
<i>Nampa Highway District #1/E. Shannon</i>		1	1			1		1					4
<i>Public Participation Committee/D. Smith</i>	1	1		1	1	1		1	1				7
<i>Valley Regional Transit/R. Jalbert</i>	1	1	1	1	1	1		1	1				8
Ex officio Members													
<i>Central District Health/R. Howarth</i>	1		1	1		1		1					5
<i>Governor's Office/D. Hensley</i>													0

TRANSPORTATION MODEL ADVISORY COMMITTEE

Attendance List

<u>Member Agency/Name</u>	Jan '15	Feb '15 No Mtg	Mar '15 No Mtg	April '15 No Mtg	May '15 No Mtg	June '15 No Mtg	July '15 No Mtg	Aug '15 No Mtg	Sept '15 No Mtg	Oct '15	Nov '15	Dec '15	TOTAL
General Members													
ACHD/ <i>S. Martin</i>	1												1
Ada County Development Services/ <i>M. Basham</i>													0
Canyon County/ <i>P. Nilsson/J. Van Dyke</i>	1												1
Canyon Highway District/No. 4/ <i>T. Richard</i>	1												1
City of Boise/ <i>K. Gallagher or A. Tuning</i>	1												1
City of Meridian/ <i>A. Petersen</i>	1												1
City of Nampa/ <i>/C. Bowman/J. Barnes</i>	1												1
IDEQ/ <i>D. Luft</i>													0
ITD/ <i>K. Sablan/M. Wasdahl</i>	1												1
Nampa Highway District #1/ <i>E. Shannon</i>													
Public Participation Committee/ <i>J. Madsen</i>	1												1
Valley Regional Transit/ <i>M. Havey</i>													0
Appointed Transportation/Land Use/Air Quality Professionals													
<i>Stephen Lewis</i> , Keller Associates	1												1
<i>Jim Pline</i> , Pline Engineering	1												1
<i>Jay Witt</i> , AECOM	1												1

REGIONAL GEOGRAPHIC ADVISORY COMMITTEE

Attendance List

Member Agency/Name	Jan '15 No Mtg	Feb '15 No Mtg	Mar '15 No Mtg	Apr '15 No Mtg	May '15 No Mtg	Jun '15 No Mt	July '15 No Mtg	Aug '15 No Mtg	Sept '15 No Mtg	Oct '15	Nov '15	Dec '15	TOTAL
General Members													
Ada County Assessors/A .Kawalec													0
Ada County Development Services/M. Basham													
Ada County Highway District/C. Spencer													0
Ada County Sheriff Office/T. Tyson													
Canyon County Development Services/S. Higuera													0
Canyon Highway District No. 4/K. Knapp													
Canyon County Sheriff Office/F. Smith													0
City of Boise/J. Hetherington													0
City of Caldwell/D. Marston													0
City of Eagle/R. Dodge													0
City of Garden City/E.Akin													0
City of Kuna/M. Borzick													0
City of Meridian/D. Green													0
City of Nampa/C. Tarter													0
ITD/B. Lacabanne													0
Nampa Highway Distr. #1/Eric Shannon													0
Public Participation Committee/K. Watkins													0



Memorandum

To: Matt Stoll, Executive Director
From: Jessica Wilson, Data Analyst *mw*
Date: September 16, 2015
Re: **Request for Approval of Administrative Modification #16 for the FY2015-2019 Regional Transportation Improvement Program**

ACTION REQUESTED:

Approval of Administrative Modification #16 for the FY2015-2019 Regional Transportation Improvement Program (TIP).

BACKGROUND:

Modifications were requested by ITD staff to reflect adjustments funded through End-of-Year and Redistribution funds. The COMPASS Board approved these as priority needs on June 15, 2015.

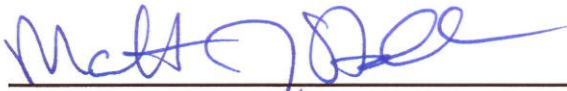
STATUS:

Per ITD staff, September 11, 2015:

- **Amity Road, Chestnut Street to Kings Corner, Nampa (10541)** – Increase preliminary engineering by \$3,000 and right-of-way by \$1,000 to cover cost overruns on the project. Funds from Redistribution.
- **SH-55, Intersection Karcher Road and Middleton Road, Nampa (12046)** – Increase preliminary engineering by \$3,000 and construction engineering by \$16,000 to cover cost overruns. Funds from Redistribution.
- **South Cemetery Road, SH-44 to Willow Creek, Middleton (12048)** – Increase preliminary engineering by \$3,000 in STP-Urban funding to cover cost overruns. Funds from Redistribution.
- **Old Highway 30, Plymouth Street Bridge, Caldwell (13494)** – Advance \$5,000 in preliminary engineering funds from preliminary development to FY2015 to match bridge funding. No change to totals. Funds from Redistribution.
- **Pathway, Garden City to Americana Boulevard, Boise (13514)** –
 - STP-TMA - Increase construction by \$485,000, funds are from Redistribution, originally programmed in Local Participating (\$228,000) and Community Choices (\$257,256). Shift funds to cover overages: Decrease right-of-way (for land purchase) by \$9,219 and increase preliminary engineering consulting by \$2,405 and preliminary engineering consulting by \$6,813.
 - Local Participating - Decrease construction by \$228,000 and convert to STP-TMA funds. Funds from Redistribution.
 - TAP-TMA - Advance \$124,000 in construction from FY2016 to FY2015. Increase FY2015 construction by \$98,000 originally programmed in Community Choices. Funds from End-of-Year sweep.
 - Community Choices - Advance construction by \$355,000 (corrected to ITD's amount) from FY2016 to FY2015. \$98,000 to TAP-TMA from End-of-Year sweep, and \$257,256 to STP-TMA from Redistribution.

Approval:

All changes for Administrative Modification #16, as provided in this memorandum and detailed on Attachment 1, are approved as of September 16, 2015.



**Matthew J. Stoll, Executive Director
Community Planning Association**

Attachment (1)

pc: 685.03

TT: T:\FY15\600 Projects\685 TIP\FY1519TIP\Amendments\1509111AdminMod16ltr.docx

Administrative Modification #16
 FY2015-2019 Regional Transportation Improvement Program
 Per ITD Staff, September 11, 2015

Key No	Project	Scheduled Costs (including Match) (costs in \$1,000)							
		Cost year	PE	PEC	RW	UT	CE	CN	SUM
10541	Amity Road, Chestnut Street to Kings Corner, Nampa	2015	0 3	0 1				334	334 338
	Funding Source: STP-U	2016							0
	Widen from four to five lanes urban section.	2017							0
		2018							0
		2019							0
		PD							0
	Increase PE by \$3,000 and RW by \$1,000 to cover cost overruns. Funds from Redistribution**.	SUM	0 3	0 1	0	0	0	334	334 338
12046	SH-55, Intersection Karcher Road and Middleton Road, Nampa	2015	0 3				0 16		0 19
	Funding Source: STP-U	2016							0
	Intersection improvement at the intersection of Karcher and Middleton Roads in Nampa.	2017							0
		2018							0
		2019							0
		PD							0
	Increase PE by \$3,000 and CE by \$16,000 to cover cost overruns. Funds from Redistribution**. Project originally obligated in FY2014.	SUM	0 3	0	0	0	0 16	0	0 19
12048	South Cemetery Road, SH-44 to Willow Creek, Middleton	2015	0 3						0 3
	Funding Source: STP-U	2016							0
	Construct a new 0.284 mile roadway segment linking SH-44 and Middleton Road by way of Sawtooth Lake Drive in Middleton.	2017							0
		2018					310	2060	2370
		2019							0
		PD							0
	Increase PE by \$3,000 to cover cost overruns. Funds from Redistribution**.	SUM	0 3	0	0	0	310	2060	2370 2373
12048	South Cemetery Road, SH-44 to Willow Creek, Middleton	2015			500				500
	Funding Source: Local Participating	2016							0
	Same as above.	2017							0
		2018							0
		2019							0
		PD							0
	No change to this funding source.	SUM	0	0	500	0	0	0	500
13494	Old Highway 30, Plymouth Street Bridge, Caldwell	2015	0 5						0 5
	Funding Source: STP-Urban	2016							0
	Replace the Plymouth Street bridge with a new two-lane structure. The existing bridge will remain in place and used as a bicycle and pedestrian bridge.	2017							0
		2018							0
		2019							0
		PD	5 0	435	171		278	1388	2277 2272
	Advance \$5,000 in PE funds from PD to FY2015 to match bridge funding. No change to totals. Funds from Redistribution**.	SUM	5	0	0	0	0	0	2277

Key No	Project	Scheduled Costs (including Match) (costs in \$1,000)							
		Cost year	PE	PEC	RW	UT	CE	CN	SUM
13494	Old Highway 30, Plymouth Street Bridge, Caldwell	2015	53	629					682
	Funding Source: Bridge (Local)	2016							0
	Same as above. No change to this funding source.	2017			146				146
		2018							0
		2019							0
		PD					830	5539	6369
		SUM	53	629	146	0	830	5539	7197
13514	Pathway, Garden City to Americana Boulevard, Boise	2015	9 <u>16</u>	204 <u>206</u>	110 <u>101</u>	50	245	830 <u>1315</u>	1448 <u>1933</u>
	Funding Source: STP-TMA	2016							0
	Construct a new 12-foot wide paved pathway south of the Boise River to fill a significant 4,100 linear foot gap in the greenbelt system. The pathway will extend from Main Street (Joe's Crab Shack) to Ann Morrison Park at Americana Boulevard to serve pedestrians and bicyclists. Increase CN by \$485,000, funds are from Redistribution, originally programmed in Local Participating (\$228,000) and Community Choices (\$257,256). Shift funds to cover overages: Decrease RW (for land purchase) by \$9,219 and increase PEC by \$2,405 and PE by \$6,813.	2017							0
		2018							0
		2019							0
		PD							0
		SUM	9 <u>16</u>	204 <u>206</u>	110 <u>101</u>	50	245	830 <u>1315</u>	1448 <u>1933</u>
13514	Pathway, Garden City to Americana Boulevard, Boise	2015						1207 <u>979</u>	1207 <u>979</u>
	Funding Source: Local Participating	2016							0
	Same as above. Decrease CN by \$228,000 and convert to STP-TMA funds. Funds from Redistribution**.	2017							0
		2018							0
		2019							0
		PD							0
		SUM	0	0	0	0	0	1207 <u>979</u>	1207 <u>979</u>
13514	Pathway, Garden City to Americana Boulevard, Boise	2015						315 <u>537</u>	315 <u>537</u>
	Funding Source: TAP-TMA	2016						124 <u>0</u>	124 <u>0</u>
	Same as above. Advance \$124,000 in CN from FY2016 to FY2015. Increase FY2015 CN by \$98,000 originally programmed in Community Choices. Funds from End-of-Year sweep*.	2017							0
		2018							0
		2019							0
		PD							0
		SUM	0	0	0	0	0	439 <u>537</u>	439 <u>537</u>

Key No	Project	Scheduled Costs (including Match) (costs in \$1,000)							
		Cost year	PE	PEC	RW	UT	CE	CN	SUM
13514	Pathway, Garden City to Americana Boulevard, Boise	2015							0
	Funding Source: ***Community Choices	2016						353 (2)	353 (2)
	Same as above. Advance CN by \$355,000 (corrected to ITD's amount) from FY2016 to FY2015. \$98,000 to TAP-TMA from End-of-Year sweep*, and \$257,256 to STP-TMA from Redistribution**.	2017							0
		2018							0
		2019							0
		PD							0
		SUM	0	0	0	0	0	353 (2)	353 (2)

PE = Preliminary Engineering

PEC = Preliminary Engineering Consultant

RW = Right-of-Way

UT = Utilities

CE = Construction Engineering

CN = Construction

FY = Fiscal Year

KN = Key Number

ITD = Idaho Transportation Department

STP-TMA = Surface Transportation Program – Transportation Management Area (Boise Urbanized Area)

STP-U = Surface Transportation Program – Urban (Nampa Urbanized Area)

*End-of-Year Plan = COMPASS provides ITD a list of funding priorities, approved by the COMPASS Board, for the End-of-Year plan to ensure obligation of all available funds. Funds that were not obligated by the extended date of September 1, 2015, were "swept" by ITD staff. Swept funds are used within the same program for funding needs included in the End-of-Year Plan.

**Redistribution = At the end of the fiscal year, the Federal Highway Administration "sweeps" funds from states unable to obligate all their federal funding, and reallocates those funds to states that have obligated all funds. Idaho typically receives between \$2 and \$14 million additional dollars through this process each year. ITD staff divides available funding to the various programs based on Idaho Transportation Board policy.

***Why did Community Choices funds convert to STP-TMA and TAP-TMA funds? The funds used to cover the advance of the Community Choices funds from FY2016 to FY2015 were from the End-of-Year Plan and Redistribution. These sources are split between state-managed and local-managed programs based on Idaho Transportation Board policy. In order to keep the required equality between the two types of programs, the Community Choices funding had to convert to STP-TMA and TAP-TMA funding.

T:\FY15\600 Projects\685 TIP\FY1519TIP\Amendments\AdminMod16.docx

COMPASS BOARD AGENDA ITEM VIII-E

Date: October 19, 2015

Topic: Status Report – Quarterly Transportation Project Information

Request/Recommendation:

For information only.

Background/Summary:

The information in Attachment 1 provides a quarterly update on transportation trends, issues, and current project status. A running total of transit ridership is provided in Attachment 2.

The next update is scheduled for February 2016. If you have questions about a specific project, please call for an update.

Implication (policy and/or financial):

There are no policy or financial implications.

More Information:

- 1) Attachment 1 – Status Report – Quarterly Transportation Project Information
- 2) Attachment 2 – Yearly Alternative Transportation Trip Report
- 3) For detailed information contact: Toni Tisdale, Principal Planner, at 475-2238 or ttisdale@compassidaho.org.

TT:nb T:\FY16\600 Projects\685 101 TIP\QuarterlyRpt\151019mmoBdStatus.docx

Status Report – Quarterly Transportation Project Information

Following is the most recent monthly reported statistics compared to the same month a year ago:

STATUS OF PUBLIC TRANSPORTATION PROJECTS

Boise Air Terminal	July 2015	July 2014	% Change
Monthly Air Passengers (Inbound and Outbound)	289,215	261,596	10.56%
Monthly Air Freight (Inbound and Outbound) (tons)	3,670	3,718	-1.27%
Public Transportation Monthly Ridership	July 2015	July 2014	% Change
ACHD VanPool (Active Routes)	99	99	0.00%
ACHD VanPool (Trips)	19,104	21,693	-11.93%
Valley Regional Transit Boise Urbanized Area Services	98,531	98,974	-0.45%
Valley Regional Transit Nampa Urbanized Area Services	13,241	15,051	-12.03%
Total	130,876	135,718	-3.57%
Other Public Transportation Reporting Average Hourly Ridership	July 2015	July 2014	% Change
Valley Regional Transit Boise Urbanized Area Services	*Not Available		
Valley Regional Transit Nampa Urbanized Area Services	*Not Available		

*VRT experienced technical difficulties with hourly counters.

QUARTERLY STATUS OF MAJOR PROJECTS

Information as of early October 2015.

Project	Sponsor	Comments
10 th Avenue Bridge, Caldwell (KN 13055)	Caldwell	This project will replace the bridge on 10 th Avenue over Indian Creek in Caldwell. Design is underway, and construction is scheduled in FY2018.
16 th Avenue Signal Project, Nampa (KN 13958)	Nampa	This project will install crash reduction signalization countermeasures at the following intersections along 16 th Avenue: 3 rd Street North, 2 nd Street South, 3 rd Street South, and 7 th Street South. Construction is underway, and scheduled to be complete by December 2015.
21 st Avenue, Chicago Avenue to Cleveland Boulevard, Caldwell (KN 13052)	Caldwell	This project will widen 21 st Avenue from Chicago Avenue to Cleveland Boulevard from a two-lane to five-lane arterial. Work will include sidewalks, traffic signals, and railroad crossings. The concept plan is approved, and the project is now in the final design phase and right-of-way acquisition. Construction is expected in FY2016.
Ada County SR2S, VRT – FY2014 (13821) AND City of Caldwell SR2S – FY2014 (14340)	VRT/YMCA	This project is complete.

Project	Sponsor	Comments
Alternatives Analysis for Downtown Boise Circulator System, Phase 1 (KN 13343)	Boise	This discretionary FTA 5309 project will conduct the first phases of an alternatives analysis study for a downtown Boise circulator system. The majority of technical analyses (e.g., ridership, traffic impact, etc.) are complete. Funding and cost analyses for different alignment and mode scenarios are also near completion. The next steering committee meeting is currently being planned for late November 2015. The anticipated outcome of this meeting is to develop a draft of the locally preferred alternative recommendation. Public comment on the draft plan is expected early in 2016, with final recommendations coming soon afterward. Updates of the alternatives analysis process may be found at http://publicworks.cityofboise.org/circulator .
Amity Avenue, Nampa (KN 10541)	Nampa	This project is a Congressional earmark to widen Amity Avenue in the City of Nampa. Construction is underway, and the first phase (of four) is already re-opened. Phase 2 is being paved. Utility work is nearly complete in Phase 3. Weather permitting, Phase 4 will be complete by mid-winter 2015. Amity Avenue is closed to traffic during construction.
Bogus Basin Road Improvements, ACHD (KN 14361)	ACHD	This Federal Lands Access Program project will make improvements to Bogus Basin Road from milepost three to milepost nine. Construction started on July 30, 2015, and is expected to be complete by October 18, 2015.
Bowmont Road, Lynwood to SH-45, Nampa (KN 12898)	Nampa Highway District	This project is complete.
Capital Maintenance, ACHD – FY2015 (KN 12363)	ACHD	This project will supplement the local maintenance program. Proposed road segments include: <ul style="list-style-type: none"> • Bogus Basin Road, Curling Drive to Mile Marker 3 • Fairview Avenue, Cloverdale Road to Five Mile Road • Five Mile Road, Ustick Road to McMillan Road • 13th Street, River Street to Front Street • 13th Street, Shoreline Drive to River Street • River Street, N. 12th Street to N. 9th Street • River Street, Americana Boulevard to N. 12th Street • Fairview Avenue, Eagle Road to Cloverdale Road • Fairview Avenue, Locust Grove Road to Eagle Road • Fairview Avenue, N. Bluff Street to Chinden Boulevard Bridge • Main Street, Chinden Boulevard Bridge to North Garden Street • Fairview Connector, N. Orchard Street to Fairview eastbound I-184 off-ramp • Fairview Connector, Fairview eastbound I-184 off-ramp to Chinden Boulevard Bridge • Westbound I-184 ramp, Chinden Boulevard to Main Street • Catalpa Drive, Collister Drive to N. 35th Street • Curling Drive, Bogus Basin Road to Braemere Road Construction is underway and is expected to be complete by August 2016.
Capital Maintenance, ACHD – FY2016 (KN 13907)	ACHD	This project will supplement the local maintenance program. Proposed road segment is Capital Boulevard from Rose Hill to 200-feet south of University Avenue. Design is 99% complete. The notice to proceed to construction is expected by April 2017, and construction is expected to be complete by May 26, 2017.
Capital Maintenance, ACHD – FY2017 (KN 13479)	ACHD	This project will supplement the local maintenance program. Geotechnical work is underway. Design is underway. Construction is scheduled for FY2017.
Capital Maintenance, VRT, Boise – FY2014 (13480)	VRT	This is an STP-TMA project for transit buses. Funds are expected to be fully expended by the end of 2015.
Capital Maintenance, VRT, Boise – FY2015 (KN 13510)	VRT	This is an STP-TMA project for transit buses. Delivery is scheduled for early 2016. FTA is reviewing the application. Funds are expected to be fully expended by the end of 2015.
Centennial Way Roundabout, Caldwell (KN 13484)	Caldwell	This project will orchestrate an angled intersection of SH-19/Simplot Boulevard, I-84 Business (in two separate legs of a couplet Cleveland Boulevard and Blaine Street) and Simplot Boulevard (a six-leg intersection) into a potential roundabout. The project is currently in the preliminary development phase. Construction is scheduled in preliminary development.

Project	Sponsor	Comments
Cherry Lane, Linder Road to Meridian Road, Lighting Improvements, ACHD (KN 18717)	ACHD	This Local Highway Safety Improvement Program project will install continuous street lighting to improve driver safety and reduce nighttime accidents on Cherry Lane from Linder Road to Meridian Road. Design is 95% complete. The notice to proceed to construction is expected by March 23, 2017, with construction complete by June 16, 2017.
Cole Road, I-84 to Franklin Road, Boise (KN RD207-16)	<u>ACHD</u>	This project will widen Cole Road from three lanes to five lanes with curb, gutter, sidewalk, and bike lanes (could be adjusted based on the Cole Road and Franklin Road concept report). Design is 75% complete, and right-of-way acquisition will begin in FY2016.
Cole Road, West Spectrum Street to South Century Way, Medians, ACHD (KN ORN19553)	<u>ACHD</u>	This project will install a raised concrete median to replace the existing temporary median on Cole Road between Spectrum Street and South Century Way. The temporary median was installed in segments over the last few years, as crash data identified a high number of left-turn crashes. The raised concrete will better delineate the median and the left-turn pockets, and reduce crashes. Design is scheduled to begin in FY2016, and construction is scheduled in FY2017.
Colorado Avenue and Holly Street Signal and Pedestrian Improvements, Nampa (KN 13486)	Nampa	This project will install traffic signals and pedestrian-friendly improvements at the intersection of Colorado Avenue and Holly Street in Nampa. Final design is complete, and right-of-way acquisition is almost complete. Construction is scheduled in preliminary development.
Deer Flat Regional Bicycle/Pedestrian Plan, Canyon County (KN 13463)	Canyon Highway District/ Nampa Highway District	This Federal Land Access Program project will develop a bicycle/pedestrian plan in the Deer Flat Refuge near Lake Lowell in Canyon County. A web-based public outreach effort using an interactive map to location specific as well as general comments was conducted in August and September 2015. These comments, along with input from the Technical Advisory Committee (TAC), will be considered in preparing the Bicycle & Pedestrian Network Plan at a TAC meeting in mid-October 2015. The study is expected to be complete in early 2016.
Farmway Road and Extension 44 Road Rehabilitation, Canyon County (KN 13054)	Notus-Parma Highway District	This project will reconstruct Farmway Road (US 20/26 to Extension 44 Road and Extension 44 Road from Farmway Road to I-84 ramps). Work includes eliminating abrupt shoulders and corrects sub-standard bridge crossings. Design is underway, and construction is scheduled in FY2018.
Franklin Road, Black Cat Road to Ten Mile Road (KN 12368)	ACHD	This project will widen Franklin Road from two lanes to five lanes from Black Cat Road to Ten Mile Road. Work includes curb, gutter, sidewalks, bicycle facilities, bio-infiltration swales, and reconstructing the intersection at Franklin Road and Black Cat Road. Design is 99% complete, and the final right-of-ways plans are received, and right-of-way acquisition is underway. Construction is expected to begin in August 2016.
Greenhurst Road Signals, Nampa (KN 13959)	Nampa	This project will install crash reduction signalization countermeasures at three successive intersections along East Greenhurst Road. The final plans, specifications, and engineer's estimate was submitted to ITD on August 28, 2015, and construction is scheduled in FY2016.
High Accident Warning Signs, Canyon Highway District (KN 13956)	Canyon Highway District	Install horizontal curve signage in multiple locations throughout Canyon Highway District to increase safety related to lane departures. The bid was awarded on August 6, 2015. Construction is expected to begin in October 2015.
I-84, Bridge Repair, Boise (KN 13035)	ITD	This project is complete.
I-84, Broadway Avenue to Gowen Road Mainline Widening (KN 13812) AND I-84, Gowen Interchange Reconstruction, Boise (KN 09822)	ITD	This GARVEE project will add a third lane to I-84 between the ramps of Broadway Avenue and Gowen Road Interchanges. The companion project is also a GARVEE project and will replace the existing interchange at Exit 57 in Boise with a new traditional interchange. Construction began on March 4, 2014, and is scheduled for completion by December 2015.

Project	Sponsor	Comments
I-84, Broadway Avenue Interchange Reconstruction, Boise (KN 09821) AND I-84, Gowen Railroad Bridge Eastbound Lane(KN 12029) AND Westbound Lane (KN 12379)	ITD	This project is a GARVEE project to replace the existing interchange at Exit 54 in Boise with a new Single Point Urban Interchange (SPUI). The companion projects will replace the existing railroad bridges in east Boise near the Broadway Interchange. Construction began February 25, 2014, and is scheduled to be complete by December 2015.
I-84, Garrity Interchange Eastbound On-Ramp, Nampa (KN 13934)	ITD	This project will add a lane to the eastbound on-ramp (right-on from northbound Garrity Boulevard) to the eastbound on-ramp. It may also include adding another lane (left-on from southbound Garrity Boulevard) to the eastbound on-ramp, as well as possible dual left turn lanes onto the westbound on-ramp, dependent on a cost/benefit analysis. Design work is underway. Construction is expected to begin in FY2016.
I-84 and I-184, Various Ramp Improvements (KN 13936)	ITD	This is a pavement resurfacing and restoration project on various I-84 and I-184 (the Connector) on/off-ramps. The plans, specifications, and engineer's estimate package was delivered in 2014. Construction started in September 2015, and will be completed by December 2015.
I-84, Meridian Interchange Reconstruction, Meridian (KN 10939) AND I-84, Meridian Interchange to Five Mile Road (KN 13057)	ITD	This GARVEE project will replace the existing interchange at Exit 44 in Meridian with a new Single Point Urban Interchange (SPUI). The project will also add the fourth lane to I-84 in this area. The companion project will reconstruct the pavement on the outside travel lanes and shoulder in both directions on I-84 between the Meridian Interchange and the Flying Wye. Construction is anticipated to be complete by late 2015.
I-84, Pavement Striping – FY2016 (KN 13023)	ITD	This project will restripe state highways in District 3. Design is underway, and construction is scheduled in FY2016.
I-84, Pavement Striping – FY2017 (KN 13464)	ITD	This project will restripe state highways in District 3. Design is underway, and construction is scheduled in FY2017.
I-84, Sand Hollow Interchange, Canyon County (KN 19047)	ITD	This project will replace the bridge at I-84 and Sand Hollow in Canyon County. Design is underway with survey activities scheduled to begin in early fall 2015. Construction is scheduled in FY2017.
I-84, SH-44 to Sand Hollow Interchange, Canyon County (KN ORN19608)	ITD	This project will rehabilitate I-84 from the intersection with the Sand Hollow Interchange to SH-44 to address cracking and poor road conditions. Improvements includes the use of a stress absorbing fiberglass mat layer. Design is scheduled to begin in FY2016, and construction is scheduled in FY2019.
I-84, Sign Structures at US 20/26 and I-84B/Centennial Way, Caldwell (KN 18830)	ITD	This project will replace signage at the I-84 interchanges at US 20/26 and I-84B/Centennial Way in Caldwell to improve safety. Design funds are obligated, but work has not started. Construction is scheduled in FY2018.
I-84, UPRR East Lateral Canal Bridge, Nampa (KN 12866) AND I-84, Northside Boulevard Underpass, Nampa (KN 12867)	ITD	This project is complete.
I-84, US 20/26 (Franklin Road) in Caldwell to Karcher Road in Nampa	ITD	This project will reconstruct and realign I-84 from US 20/26 (Franklin Road) in Caldwell to Karcher Road in Nampa. Project will address cracking and poor road condition along 3.7 miles of I-84. ITD plans to remove 2-feet on either side of each crack and replace the section with flowable fill asphalt. Milling the entire section will smooth the surface fore resurfacing the roadway. Design is scheduled to begin in FY2016, and construction is scheduled in FY2018/2019.
I-84B, Canyon Street to Grant Avenue, Nampa (KN 13931)	ITD	This project will rehabilitate the pavement and restore the riding surface of the roadway along the I-84 Business Loop in Nampa, between Canyon Street and Grant Avenue. Currently, some areas are in fair condition while others are in very poor condition. This project will improve the pavement, repair deficient curb gutters, and modify pedestrian ramps to current standards. Design is underway, and construction is scheduled in FY2017.
I-84B, Micro Seals, Canyon County – FY2015 (KN 13465)	ITD	This project is complete.

Project	Sponsor	Comments
ITS, Northside Boulevard/Kings Road Signal Upgrades, Nampa (KN 18702)	Nampa	This project will install traffic signal crash reduction countermeasures at three signalized intersections by updating signalization hardware and technology to improve turning movement efficiency and safety. Locations: Karcher Road and Northside Boulevard, Northside Boulevard and 6 th Street North, and Kings Road at Garrity Boulevard/Airport Road. Design is scheduled to begin in FY2016, and construction is scheduled in FY2017.
Lake Hazel Road Extension, Ada County (KN RD213-17)	ACHD	Extend Lake Hazel Road from the existing east end terminus to Cole Road as a two-lane road with an asphalt pathway to improve area circulation and connectivity. Construction began August 26, 2015, with completion expected by October 30, 2015.
Linder Road and Deer Flat Road Intersection, Kuna (KN 13492)	ACHD	Make improvements to the intersection at Linder Road and Deer Flat Road in Kuna and will include curb, gutter, sidewalk, and bike lanes. Design is 65% complete, with construction scheduled in FY2020.
Linder Road, Franklin Road to Pine Avenue, Meridian (KN RD213-16)	<u>ACHD</u>	This project will widen Linder Road to five lanes with curb, gutter, sidewalk, and bike lanes between Franklin Road and Pine Avenue. Project includes upgrade of the Union Pacific Railroad crossing and replacement and widening of a bridge structure. Design is scheduled to begin in FY2016, and construction is currently programmed in preliminary development.
Middleton Road and Ustick Roundabout, Caldwell (KN 13487)	Caldwell	This project will improve a four-way stop at the Middleton Road and Ustick Road intersection by building a roundabout to help traffic flow and reduce congestion. Design in underway, with construction scheduled in preliminary development.
Old Highway 30, Plymouth Street Bridge, Caldwell (KN 13494)	Canyon Highway District / Caldwell	This project will replace the Plymouth Street bridge with a new two-lane structure. The existing bridge will remain in place and used as a bicycle and pedestrian bridge. This project is funded with two funding sources. The professional services scope and efforts through concept approval were negotiated, and design is expected to start in October 2015. Construction is scheduled in preliminary development.
Overland Road and Vista Avenue Lighting, ACHD (KN ORN19551)	<u>ACHD</u>	This project will install lighting on north and east legs of the Vista Avenue and Overland Road intersection to improve driver safety and reduce nighttime crashes. The safety measure has a crash reduction factor of 37%. Design is scheduled to begin in FY2016, and construction is scheduled in FY2017.
Pathway, Dry Creek Trail, Phase 1, Eagle (KN 13916)	Eagle	Project provides a bicycle and pedestrian underpass at SH-44 on the west side of the City of Eagle, connecting the Dry Creek Pathway and the northeast side of the City of Eagle with the Eagle Island Pathway system. The Project Charter (concept report) was submitted to ITD for review on August 26, 2015. The environmental work is underway. Construction is scheduled in FY2016.
Pathway, Eckert Road Underpass, Boise (KN 13913)	Boise	This project will construct a bicycle and pedestrian underpass at Eckert Road on the north side of the Boise River, allowing bicyclists and pedestrians on the Greenbelt to cross Eckert Road separately from vehicles. Design is scheduled to begin in FY2016, and construction is scheduled to start in FY2020. This project was also selected for COMPASS' Project Development Program. The preliminary design report is expected by the end of October 2015.
Pathway, Garden City to Americana Boulevard, Boise (KN 13514)	Boise	This project will construct a 12-foot wide paved pathway to fill a 4,100 linear-foot gap in the Greenbelt system on the south side of the river between Main Street and Americana Boulevard with connection to Ann Morrison Park. This project was bid. Negotiations could take through early November 2015. Construction is scheduled to take 272 calendar days for completion.
Pathway, Mill Creek Elementary, Middleton	Greater Middleton Parks and Recreation	This project will install a 12-foot pathway from Cornell Street to Mill Creek Elementary, which will cross a new bridge and connect to a pathway to Johnson Park Estates and the back entrance to Mill Creek Elementary. An eight-foot pathway will also be constructed from the back entrance to the front of the school with connections to Middleton Road and around the perimeter of the Mill Creek Elementary School parking lot. Design is scheduled to begin in FY2016, and construction is scheduled in FY2017.

Project	Sponsor	Comments
Pathway, Orchard Street, Kuna (KN 14342)	ACHD/ Kuna	Provide pedestrian and bicycle facilities on the west side of Orchard Street from Avalon south to the Kuna Greenbelt. Work will include curb, gutter, and sidewalk on the north half up to the end of pavement. The southern portion will include a paved six-foot asphalt pathway. This project went to bid and had a high bid returned. ACHD is preparing this project to re-bid in February 2016.
Pathway, Rail with Trail, Meridian (KN 13918)	Meridian	This project will construct a multi-use pathway either along or parallel to the railroad tracks for approximately one-half mile near downtown Meridian. Design is scheduled to begin in FY2016, using local funds, and construction is scheduled in FY2018 and FY2019. The City Council approved the budget for design and getting a consultant to assist in securing easements in September 2015.
Pathway, Warm Springs, Ada County (KN 18895)	Ada County	Ada County requested this project be from the federal program. The action is in process.
Peckham Road, US-95 to Notus Road, Canyon County (KN 13964)	Greenleaf, Wilder, Golden Gate HD	This project makes improvements on Peckham Road from US-95 to Notus Road in Canyon County. The project is generally road rehabilitation, and also includes curb, gutter, and sidewalk improvements within the cities of Wilder and Greenleaf. Design is scheduled to begin in FY2016, and construction is scheduled in FY2020.
Pedestrian Improvements, College of Western Idaho, Nampa (KN 18718)	Nampa	This project will construct a pedestrian crossing of the Union Pacific Railroad track between the new College of Western Idaho Park-and-Ride lot and the Idaho Center. Design is scheduled in FY2016, pending obligation of FTA funding.
Pedestrian Improvements, Lake Lowell Pathway, Nampa (KN 19065)	Nampa	This project will install pedestrian and bicycle safety improvements at the Wilson Pathway crossing at Lake Lowell Avenue in Nampa. Improvements include a pedestrian activated signal, wheelchair accessible ramps, sidewalk modifications with guardrail, lighting, crosswalk markings, and signage. Design is scheduled to begin in FY2016, and construction is scheduled in FY2017.
Pedestrian Improvements, Middleton Heights Elementary, Middleton (KN 18954)	Middleton	This project will add missing segments of sidewalk that lead to Heights Elementary on the west side of Cemetery Road in Middleton. The state/local agreement is complete. The City is preparing to hire a consultant for design. Construction scheduled in FY2016.
Pedestrian Improvements, Near Nampa High, Nampa (KN 18977)	Nampa	This project will design and construct pedestrian improvements on Lake Lowell Avenue near Nampa High School. The project will improve driveway entrances for the high school parking lots, provide better pedestrian crossing, and improve access control. Design is scheduled in FY2016, pending obligation of FTA funding.
Pedestrian Improvements, Near Skyview High, Nampa (KN 19069)	Nampa	This project will design and construct pedestrian safety improvements on East Greenhurst Road near Skyview High School. The project will improve pedestrian crossing at the intersection of Greenhurst and the entrance to Skyview High School (just east of Chestnut Street). Rectangular Rapid Flashing Beacons will be installed to alert drivers and protect pedestrians. Design is scheduled in FY2016, pending obligation of FTA funding.
Pedestrian Improvements, South Midland Boulevard, Nampa (14344)	Nampa	This project will place a HAWK pedestrian-activated signal at the Wilson Pathway where it crosses Midland Boulevard. Pedestrian pre-warning signals and thermoplastic crosswalk markings will also be installed to improve safety concerns at the intersection. Design started in FY2015, and construction is scheduled in FY2017.
Pedestrian Improvements, Stoddard Pathway/Greenhurst Road, Nampa (KN 18867)	Nampa	This project will install pedestrian and bicycle safety improvements at the Stoddard Pathway crossing on East Greenhurst Road. Improvements include a pedestrian activated HAWK signal, wheelchair accessible ramps, pathway realignment, lighting, crosswalk markings, signage, and modifications to the parking lot layout to the north. Design funds are obligated, and the City of Nampa is in process of hiring a consultant. Construction is scheduled in FY2016.
Planning, Travel Survey and Transit On-Board Data Collection (KN 13048)	COMPASS	The FY2015/2016 data collection efforts will be focused on public transportation (the on-board transit ridership survey) since the regional household travel survey, completed in 2012, provided sufficient data to update specific portions of the regional travel demand model. Other factors that influence household travel behavior are stable; therefore, reducing the need for additional household travel data. The request for proposals was released in September 2015.

Project	Sponsor	Comments
Planning, <i>Communities in Motion</i> Update, COMPASS (KN 13047)	COMPASS	This project will fund specific studies and public involvement activities related to updating <i>Communities in Motion</i> , the regional long-range transportation plan. Costs only include direct expenses for the project (no staff time). This project is scheduled in FY2016 and FY2017.
Riverside Road and Lake Shore Drive, Rehabilitation, Canyon County (KN 14362)	Canyon Highway District	This Federal Land Access Program project will rehabilitate Riverside Road and Lake Shore Drive near Lake Lowell in Canyon County. Preliminary design was completed and reviewed. Wider paved shoulder widths are being considered, as proposed in the draft Lake Lowell Bike/Pedestrian Plan. The request for additional funding for the wider paved shoulders is under consideration with a decision expected by October 2015. Construction of this project is expected to be delayed to FY2017 to accommodate available funding for other scheduled projects, at the request of Federal Highway Administration.
SH-16 and Beacon Light Road Intersection Improvements, Ada County (KN 18872)	ITD, ACHD	The project will improve the safety at the intersection of SH-16 and Beacon Light Road. Safety improvements include adding a signal and widening the intersection. Design is underway, and construction is scheduled in FY2017.
SH-16, Junction SH-44 in Ada County to Emmett (KN 13467)	ITD	This project is complete.
SH-19, Corridor Plan	ITD	This is a Corridor Management Plan covering 16.1 miles of SH-19 in Canyon and Owyhee Counties. Public meetings will be held in March 2016. The draft Corridor Management Plan is expected to be delivered in summer 2016.
SH-19, Simplot to Blaine Street, Caldwell (KN 13937)	ITD	This project will mill the existing surface and place an asphalt overlay from Simplot to Blaine Street (approximately 2.5 miles). The plans, specifications, and engineers estimate package was delivered in 2014. Construction started in September 2015, and will be complete in fall 2015.
SH-44, ADA Ramp Improvements, Middleton (KN 19008)	Middleton	This project provides for Americans with Disabilities (ADA) ramp improvements at seven locations on SH-44 between Eaton Road and Marjorie Avenue in the City of Middleton. Additional right-of-way and temporary easements are being pursued by the City at ITD's request. Construction is scheduled in FY2016.
SH-44, Canyon Canal Bridge, Middleton (KN 18950)	ITD	This project will replace the bridge on SH-55 at Canyon Canal Bridge in the City of Middleton. Design funds are obligated, but work has not started. Construction is scheduled in FY2019.
SH-44 Corridor Preservation (KN 07827)	ITD	This project is a feasibility, access management, construction phasing, and National Environmental Policy Act (NEPA) study only. The Finding of No Significant Impact (FONSI) is anticipated in summer 2016. The traffic study was revised, and ITD staff is in the process of updating the Environmental Assessment document.
SH-44, Junction I-84 to Plummer Road in Star, Canyon County (KN 13463)	ITD	This project will rehabilitate SH-44 from I-84 in Canyon County to Plummer Road in Star in order to extend the service life and improve the riding surface. Other improvements include guardrail replacement, ensuring accessibility for people with disabilities at intersections, and replacing two failing culverts. Design is underway, and construction is scheduled in FY2016.
SH-44, State Street to SH-55 North, Pavement Preservation, Eagle (KN 13923)	ITD	This project will rehabilitate the existing pavement on SH-55 (East State Street) to the junction with SH-55 North in Eagle by milling off the surface and laying down new asphalt. Improvements include upgrading sidewalk ramps at the intersections to meet current accessibility standards for people with disabilities. Design is underway, and construction is scheduled in FY2016.
SH-45 Corridor Plan	ITD	The Idaho 45 corridor plan will develop a ten-year plan to identify current and future highway needs on SH-45 on an 18-mile section of SH-45 beginning at SH-78 in Owyhee County and extending to the City of Nampa and the I-84 Business Loop. Public meetings are scheduled for spring 2016. The draft Corridor Management Plan is expected to be delivered in summer 2016.

Project	Sponsor	Comments
SH-45 (12 th Avenue), 10 th Street South to 12 th Street South, Nampa (KN ORN19550)	Nampa	This project will install a Pedestrian Hybrid Beacon on SH-45 (12 th Avenue South) at a location between 10 th Street South and 12 th Street South. These improvements will increase driver awareness and protect pedestrians and bicyclists. The project includes a pedestrian hybrid beacon, lighting, automatic pedestrian signals, pedestrian curb ramps, signage, and striping. Design is scheduled to begin in FY2016, and construction is scheduled in FY2017.
SH-45 (12 th Avenue), Sherman Avenue to Dewey Avenue, Nampa (KN ORN19552)	Nampa	This project will install a Pedestrian Hybrid Beacon on SH-45 (12 th Avenue South) at a location between Sherman Avenue and Dewey Avenue. These improvements will increase driver awareness and protect pedestrians and bicyclists. The project includes pedestrian hybrid beacon, lighting, automatic pedestrian signals, pedestrian curb ramps, signage, and striping. Design is scheduled to begin in FY2016, and construction is scheduled in FY2017.
SH-45, Deer Flat to I-84B, Nampa (KN 13030)	ITD	This project is complete.
SH-45, Snake River Bridge, Walters Ferry (KN 13389)	ITD	Rehabilitate and refurbish the bridge on SH-45 over the Snake River near Walters Ferry to mitigate scouring, or wear, in the riverbed. Design is underway, and construction is scheduled for FY2017. This is a Construction Manager/General Contractor (CMGC) project. ITD is finalizing construction manager and design consultant agreements. Construction is scheduled in FY2017.
SH-55 (Eagle Road) and McMillan Road Intersection (KN 13058)	ACHD/ITD	This project is substantially complete.
SH-55 (Eagle Road) and SH-44 (State Street), CFI Intersection, Eagle (KN ORN19312)	ITD	This project will help alleviate congestion, improve traffic operations, and increase safety factors for all users of the intersection at SH-55 (Eagle Road) and SH-44 (State Street). Project is in early development stages. Design is underway, and construction is currently considered "unfunded."
SH-55 (Eagle Road), I-84 to SH-44 Micro Seals – FY2015 (KN 13466)	ITD	This project will provide seal coats on SH-55 (Eagle Road) between I-84 and SH-44. Construction was expected in FY2015; however, this project was delayed to FY2017 in order to accommodate developer improvements on Eagle Road, which need to be completed first (see below).
SH-55 (Eagle Road), Meridian Towne Center (KN 13349)	Developer	Add one-lane northbound from Franklin Road to Fairview Avenue and add one-lane southbound from River Valley Street to Franklin Road. The project will be constructed by the developer of the Meridian Towne Center shopping center using State Tax Anticipated Revenue (STAR) financing. Construction is scheduled for FY2016.
SH-55 (Karcher Road) and Hoskins, Pride, and Riverside, Canyon County (KN 18779)	ITD	This project will re-design the intersections at Hoskins Road, Pride Lane, and Riverside Road to improve safety on SH-55 northwest of the Deer Flat National Wildlife Refuge (Lake Lowell). A preliminary safety analysis indicates new turn lanes will be warranted. Design is underway, and construction is scheduled in FY2019.
SH-55, Intersection of Karcher Road and Indiana Avenue (KN 13475)	ITD	This is an intersection improvement project near the City of Nampa to rebuild the roadway. The project includes minor widening and adds traffic signals. Design activity will be complete in fall 2015, when right-of-way acquisitions will begin. Delivery of the plans, specifications, and engineer's estimate are expected in spring 2016.
SH-55, Intersection of Karcher Road and Lake Road (KN 12383)	ITD	This is an intersection improvement project near the City of Nampa to rebuild and widen the roadway and add traffic signals. Additional right-of-way acquisition is required. Design activity will be complete in winter 2015, when right-of-way acquisition will begin. The plans, specifications, and engineer's estimate are expected in spring 2016.
SH-55, Intersection of Karcher Road and Middleton Road, Nampa (KN 12046)	ITD/ Nampa	This project will reconstruct the existing Karcher Road and Middleton Road intersection from just west of the Elijah Drain culvert to the vicinity of Sundance Street, including additional lanes, new traffic signals, improved drainage and on-street lighting. Construction is underway, and is expected to be complete by late 2015. Work occurs during daylight hours with reduced speed limit in the work zone.
SH-55, Intersection of Karcher and Midway Road (KN 13025)	ITD	This is an intersection improvement near the City of Nampa to rebuild and widen the roadway and add traffic signals. Additional right-of-way acquisition is required. Design activity will be complete in winter 2015, when right-of-way acquisition will begin. The plans, specifications, and engineer's estimate are expected in spring 2016.

Project	Sponsor	Comments
SH-55, Intersection of Karcher Road and Nampa-Caldwell Boulevard (KN 13033)	ITD	This is an intersection improvement project to time signals, add signage, and reconfigure striping and lanes to minimize crashes at the intersection of Karcher Road and Nampa-Caldwell Boulevard. The plans, specifications, and engineer's estimate package was delivered in 2014. Construction is scheduled in FY2016.
SH-55 and Farmway Road Intersection, Canyon County (KN 18841)	ITD	This project will rehabilitate, widen, and signalize the intersection of SH-55 and Farmway Road in Canyon County. Project will add left-turn lanes on north and south-bound Farmway Road. On SH-55, a combination of right-turn and auxiliary through lanes will be added with dedicated left turn lanes and one continuous through lane for each side, for a total of five 12-foot lanes on the SH-55 legs, and three 12-foot lanes on Farmway Road. Design is scheduled to begin in FY2016, and construction is scheduled in FY2017.
SH-55, Overhead Message Sign to Avimor, Ada County (KN 18787)	ITD	This project will add an overhead message sign on SH-55, south of Avimor in Ada county, to relay safety messages to people traveling on SH-55. Design is underway, and construction is scheduled in FY2018.
SH-55, Snake River Bridge, Marsing (KN 13387)	ITD	This project will replace the bridge on SH-55 over the Snake River near Marsing. Design is currently in the preliminary stage, and construction is scheduled in FY2017.
SH-69 Corridor Plan	ITD	The SH-69 corridor plan will develop a 10-year plan to identify current and future highway needs on SH-69 beginning at the City of Kuna and extending to the City of Meridian, and the interchange with I-84. Completion of the plan is expected in summer 2016.
SR2S, VRT, Ada County – FY2015 (KN 13908)	VRT	This Safe Routes to School project will support up to three full-time staff serving schools in Ada County, with a focus on the Boise and Meridian School Districts. The Treasure Valley YMCA will receive pass-through funds for this project.
SR2S, VRT, Ada County – FY2016 (KN 13909)	VRT	This Safe Routes to School project will support up to three full-time staff serving schools in Ada County, with a focus on the Boise and Meridian School Districts. The Treasure Valley YMCA will receive pass-through funds for this project.
Signal Timing Plan Update, ACHD (KN 13955)	ACHD	This project is complete.
South Cemetery Road, SH-44 to Willow Creek, Middleton (KN 12048)	Middleton	Add a new 0.284-mile roadway segment linking SH-44 and Middleton Road by way of Sawtooth Lake Drive in Middleton. The revised environmental evaluation is under review by ITD. After approval, preliminary design will continue until complete. Construction is expected in FY2018.
South Orchard Access Road, Railroad Crossing, Ada County (KN 12360)	ITD	Add a railroad gate and signal at the South Orchard Access Road in Ada County. Roadway managers from ACHD are waiting to hear from railroad staff that the rail portion is complete before finalizing construction.
State Street and Collister Drive Intersection, ACHD (KN 13481)	ACHD	Make geometric and operational improvements to the intersection at State Street and Collister Drive. Design started in March 2014, and is approximately 75% complete with expectations to complete design by October 2016. Construction is scheduled to begin in April 2018.
Swan Falls Road Shoulder Widening, Kuna – FY2012 (KN 13518)	ACHD	This project is complete.
Transit – Associated Capital Improvements, Nampa – FY2013 (KN 12760)	Nampa	This project includes bicycle and pedestrian improvements at three locations near transit routes in Nampa. The 12 th Avenue and South Valley Drive Signal and Pedestrian Improvement project is complete. The remaining components of this project are on hold pending FTA funding.
Transit – Bicycle and Pedestrian Infrastructure, Nampa – FY2014 (KN 13711)	Nampa	The bike and walk to downtown project will provide bicycle and pedestrian infrastructure, to enlarge access and connectivity by connecting multiple neighborhoods in southeast and north Nampa to the downtown area, and to one of the three transit transfer stations in Nampa. Construction is underway, and is expected to be complete by December 2015.
US 20/26 Corridor Preservation (KN 07826)	ITD	This project is a feasibility, access management, construction phasing, and National Environmental Policy Act (NEPA) study only. A finding of no significant impact is anticipated in spring 2016. The team conducted meetings with local agencies. The concept report will be complete in fall 2015.

Project	Sponsor	Comments
US 20/26 Broadway Bridge, Boise (KN 11588)	ITD	A new bridge will be constructed to replace the existing structure on US 20/26 over the Boise River in downtown Boise, including reconstruction/widening of Broadway Avenue between Myrtle Street and University Avenue and rehabilitation of the existing pavement between Front Street and Myrtle Street. The project is out to bid, with the contractor to be selected by the end of October 2015. Utility work is already underway. Construction will begin in late 2015, and continue through late 2016.
US 20/26 Intersection Improvements, Canyon County (KN ORN19446)	ITD	This project will add right turn lanes and paved shoulder to three intersections along the US 20/26 corridor (Midland, Northside, and Can-Ada). This will provide a safe place for deceleration and turning movements along a high speed commuting corridor. Design is scheduled to begin in FY2016, and construction is scheduled in FY2020.
US 20/26, Branstetter Street to Junction I-184, Garden City (KN 13928)	ITD	This project will rehabilitate the pavement on Chinden Boulevard, (US-20/26) in Garden City from Branstetter Street to the junction with I-184, by removing the top layer of asphalt and replacing it with new. The improvement will extend the lifespan of the road pavement. Design is underway, and construction is scheduled in FY2016.
US 20/26, Locust Grove Road Intersection, Meridian (KN 13941)	ITD	This project will add a right turn from northbound Locust Grove Road onto US 20/26 (Chinden Blvd.) The improvement will reduce congestion and increase safety. Design is underway and construction is scheduled in FY2017.
US 20/26, Locust Grove Road to Cloverdale Road, Ada County (KN 13927)	ITD	This project will restore the pavement on US 20/26 between North Locust Grove and Cloverdale Road in Boise and Eagle by grinding off some of the existing asphalt and replacing it with new. This improvement will extend the lifespan of the existing pavement and provide a safer, smoother driving condition. Design is underway, and construction is scheduled in FY2016.
US 20/26, Oregon State Line to I-84, Corridor Study	ITD	This is a Corridor Management Plan covering 22.1 miles of US 20/26 in Canyon County. The draft Corridor Management Plan is expected to be delivered in winter 2015.
US 20/26, Parma Junction to I-84, Seal Coat, Canyon County (KN ORN19364)	ITD	This project will seal coat US 20/26 from the Parma Junction to I-84 to preserve this section of roadway in good condition. Design is scheduled to begin in FY2016, and construction is scheduled in FY2018.
US 20/26, Smeed Parkway to Middleton Road, Caldwell (KN 13921)	ITD	This project will reconstruct, realign, and widen US 20/26 from Smeed Parkway to Middleton Road in Caldwell. Design is currently underway in the early development program, but construction is considered "unfunded."
US-95 Access Management Plan (South Segment)	ITD	This is a Corridor Management Plan covering 50.8 miles of US-95 in Owyhee and Canyon Counties (south).The draft Corridor Management Plan is expected to be delivered in summer 2016.
US-95, Junction US 20/26 Union Pacific Railroad Overpass (KN 12886)	ITD	This is a bridge replacement project. Roadway and bridge design is underway. Railroad coordination is progressing. This project was delayed until FY2016 to accommodate projects of more critical need.
US-95, Wilder to Parma, Seal Coat, Canyon County (KN ORN19362)	ITD	This project will seal coat SH-95 from Wilder to Parma to preserve the existing pavement that is in good condition. Design is scheduled to begin in FY2016, and construction is scheduled in FY2017.
Ustick Road, Linder Road to Meridian Road, Meridian (KN RD202-35)	ACHD	This project will widen Ustick Road from Linder Road to Meridian Road in Meridian to five lanes and will include curb, gutter, sidewalks, and bike lanes. Design on the project is 99% complete. Right-of-way acquisition is currently underway. Construction is scheduled to begin in August 2016.
Ustick Road, Meridian Road to Locust Grove Road, Meridian (KN RD202-37)	ACHD	This project will widen Ustick Road from Meridian Road to Locust Grove Road from two-lane to five-lane urban section with curbs, gutter, sidewalks and bike lanes. Project will require acquisition of 96-feet of right-of-way. Design is complete. Right-of-way acquisition is currently underway. Construction is scheduled to begin in August 2016, and conclude by September 2017.

T:\FY16\600 Projects\685 101 TIP\QuarterlyRpt\1510.doc

CY2015	Jan	Feb	Mar	Apr	May	Jun	Jul	Aug	Sept	Oct	Nov	Dec	Total - Jul	To Date % Change 14-15
ACHD Vanpool (Trips)	20,340	19,224	20,853	21,109	18,549	19,413	19,104						138,592	-10.25%
VRT Boise Urbanized	97,587	105,027	109,985	110,294	96,245	95,604	98,531						713,273	-4.22%
VRT Nampa Urbanized	16,518	16,822	15,912	17,770	13,682	13,659	13,241						107,604	-10.72%

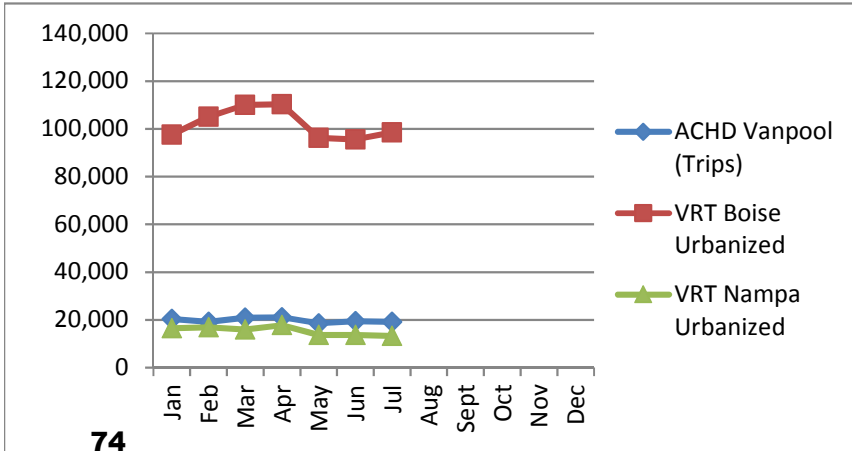
CY2014	Jan	Feb	Mar	Apr	May	Jun	Jul	Aug	Sept	Oct	Nov	Dec	Total - Jul	To Date % Change 13-14
ACHD Vanpool (Trips)	24,139	21,360	22,305	23,405	20,955	20,566	21,693	19,517	20,985	22,149	17,661	20,675	154,423	-4.94%
VRT Boise Urbanized	112,101	109,219	110,125	118,204	103,073	93,007	98,974	96,200	112,883	120,882	98,160	106,720	744,703	-1.66%
VRT Nampa Urbanized	17,685	17,528	17,272	19,708	17,317	15,967	15,051	15,432	19,889	21,554	14,159	16,732	120,528	-5.62%

CY2013	Jan	Feb	Mar	Apr	May	Jun	Jul	Aug	Sept	Oct	Nov	Dec	Total - Jul	To Date % Change 12-13
ACHD Vanpool (Trips)	24,820	22,491	23,554	24,362	23,031	21,357	22,832	23,272	22,087	23,366	21,018	21,040	162,447	0.29%
VRT Boise Urbanized	105,668	118,669	112,729	117,867	111,770	91,450	99,098	94,982	102,585	119,175	104,531	101,757	757,251	1.81%
VRT Nampa Urbanized	18,265	19,685	19,112	21,111	18,199	15,513	15,816	18,003	21,988	21,029	14,329	15,251	127,701	8.50%

CY2012	Jan	Feb	Mar	Apr	May	Jun	Jul	Aug	Sept	Oct	Nov	Dec	Total - Jul	To Date % Change 11-12
ACHD Vanpool (Trips)	23,327	22,989	23,821	23,245	24,007	22,096	22,500	24,676	21,216	24,475	22,207	20,247	161,985	10.67%
VRT Boise Urbanized	96,100	119,064	106,068	118,989	116,421	92,998	94,139	102,614	105,805	111,715	110,719	102,009	743,779	0.46%
VRT Nampa Urbanized	18,511	16,167	18,379	19,645	14,427	15,501	15,068	17,117	20,330	23,101	19,687	16,368	117,698	4.63%

CY2011	Jan	Feb	Mar	Apr	May	Jun	Jul	Aug	Sept	Oct	Nov	Dec	Total - Jul	To Date % Change 10-11
ACHD Vanpool (Trips)	20,243	22,046	22,121	20,936	20,169	21,510	19,336	23,097	20,347	19,749	22,240	20,832	146,361	5.43%
VRT Boise Urbanized	101,936	101,144	117,704	108,108	111,366	106,275	93,834	115,761	114,726	114,484	110,885	103,464	740,367	1.07%
VRT Nampa Urbanized	15,364	16,508	18,362	17,393	16,347	13,325	15,186	19,370	20,998	20,215	18,235	15,202	112,485	-7.80%

2015



2014

