



Working together to plan for the future

BOARD PACKET

December 15, 2014

COMPASS BOARD MEETING DATES
January 2015 – June 2015

COMPASS BOARD MEETING DATE/TIME	LOCATION	KEY ITEMS
Monday, January 26, 2015	COMPASS 1 st Floor Board Room 700 NE 2 nd Street Meridian, Idaho	<p>Confirm Board Officers: Chair, Chair Elect, Vice Chair, Immediate Past Chair. Elect Secretary-Treasurer</p> <p>Confirm Executive Committee Representatives for Cities under 25,000 in Population.</p> <p>Confirm COMPASS Non-Elected Board Members and Alternate Members</p> <p>Confirm Standing Committee Members</p> <p>Review Draft Updates to the Joint Powers Agreement and Board Bylaws and Provide 30 Day Notice of Intent to Amend</p>
Monday, February 23, 2015	COMPASS 1 st Floor Board Room 700 NE 2 nd Street Meridian, Idaho	<p>Approve Priorities of New Projects for FY2016-2020 Regional Transportation Improvement Program</p> <p>Approve Transportation Improvement Program Application Process and Guide</p> <p>Adopt Resolution Approving the Updated Joint Powers Agreement and Board Bylaws</p>
Monday, March 16, 2015	COMPASS 1 st Floor Board Room 700 NE 2 nd Street Meridian, Idaho	TBD
Monday, April 20, 2015	COMPASS 1 st Floor Board Room 700 NE 2 nd Street Meridian, Idaho	TBD
Monday, May 18, 2015	COMPASS 1 st Floor Board Room 700 NE 2 nd Street Meridian, Idaho	TBD
Monday, June 15, 2015	COMPASS 1 st Floor Board Room 700 NE 2 nd Street Meridian, Idaho	TBD

MAKING A MOTION:

1. **Seek recognition from the chair.**
2. **When you are recognized, say, "I move..."**
State your motion clearly, concisely, and completely.
3. **Wait for someone to "second" your motion.**
A "second" does not imply the person making the second agrees with the motion – only that he/she agrees it should be debated.
4. **Wait while the chair restates the motion.**
Be prepared to provide the motion to the chair in writing, if needed or requested, to ensure the chair accurately restates it.
5. **Respectfully debate your motion.**
As the person making the motion, you have the right to speak first, but do not have to. When you speak, state your opinion then respectfully listen to, and consider, other opinions.
6. **Wait for the chair to take a vote.**
After discussion is complete, the chair will call for a vote.
7. **Listen as the chair announces the result of the vote.**

Motions to Protect Rights:
• Division of the Assembly
• Point of order
• Appeal chair's ruling
• Point of information
• Parliamentary inquiry
Motions to Choose Voting Methods:
• Vote by ballot, roll call, counted vote
• Choose method of nominations
• Open or close nominates or the polls
Motions to Delay Action:
• Refer to a committee
• Postpone to a definite time
• Recess
• Adjourn
• Postpone indefinitely
• Lay on the table
Motions to Vary the Procedures:
• Suspend the rules
• Divide the question
• Request to withdraw a motion
• Request relief from duty – or resign
Motions to Re-examine:
• Reconsider
• Rescind/Amend something previously adopted
• Take from the table
• Discharge a committee

To Change a Proposed Motion:
Amend Motions to Raise Urgent Issues:
• Question of privilege
• Orders of the day
• Object to consideration
Motions to Control Debate:
• Limit debate
• Previous question

TABLE OF RULES RELATING TO MOTIONS:

Motion	Debate?	Amend?	Vote
Adjourn	No	No	Majority
Amend	Yes	Yes	Majority
Amend Something Previously Adopted	Yes	Yes	(a) Majority with notice; or (b) 2/3; or (c) Majority of entire membership
Appeal	Normally	No	Majority in negative required to reverse chair's decision
Commit	Yes	Yes	Majority
Debate, Close (Previous Question)	No	No	2/3
Debate, Limit or Extend Limits of	No	Yes	2/3
Main Motion	Yes	Yes	Majority
Postpone	Yes	Yes	Majority
Previous Question	No	No	2/3
Recess	No	Yes	Majority
Reconsider	If motion to be reconsidered debatable	No	Majority
Rescind	Yes	Yes	(a) Majority with notice; or (b) 2/3; or (c) Majority of entire membership
Refer (Commit)	Yes	Yes	Majority
Suspend the Rules (of Order)	No	No	2/3
Suspend the Rules (standing or convention standing rules)	No	No	Majority
Voting, motions relating to	No	Yes	Majority

**BOARD OF DIRECTORS' MEETING
DECEMBER 15, 2014 – 1:30 PM
NAMPA CIVIC CENTER, 311 3RD STREET SOUTH
NAMPA, IDAHO**

NOTICE: The online document includes bookmarks at the left of the screen that are named to correspond to agenda items that have attachments. Clicking on a bookmark or agenda item will take you directly to the named document.

REMINDER: COMPASS Board members are invited to attend the Annual Holiday Luncheon and Leadership in Motion Awards Ceremony at 12:00 pm.

****AGENDA****

I. CALL TO ORDER (1:30)

II. PLEDGE OF ALLEGIANCE

III. AGENDA ADDITIONS/CHANGES

IV. OPEN DISCUSSION/ANNOUNCEMENTS

V. CONSENT AGENDA

- Page 3 * A. Approve October 20, 2014, Board Meeting Minutes
- Page 7 * B. Receive Approved September 12, 2014, and October 21, 2014, Executive Committee Meeting Minutes
- Page 13 * C. Approve List of Records for Destruction
- Page 18 * D. Approve 2015 COMPASS Board and Executive Committee Meeting Dates and Provide 30 day Notice of Annual Meeting
- Page 19 * E. Adopt Resolution 04-2015 Amending the FY2015-2019 Regional Transportation Improvement Program
- Page 30 * F. Adopt Resolution 05-2015 Amending the FY2014-2018 Regional Transportation Improvement Program
- Page 36 * G. Approve Communities in Motion Update Public Involvement Plan

VI. INFORMATION/DISCUSSION ITEMS

- 1:35 A. Review ITD Approach in Addressing Needs on I-84 from Franklin Boulevard in Nampa to Interchange 29 in Caldwell (US 20/26 AKA Franklin Road) Amy Revis
Amy Revis, ITD District 3 Engineer, will review ITD's approach in addressing this section of I-84.
- 2:05 B. Status Report – Finance Committee Rebecca Arnold
Rebecca Arnold, Finance Committee Chair, will provide a status Report on action taken at the November 20, 2014, and December 11, 2014, Finance Committee meetings.

Page 49 *C. **Status Report - COMPASS Education Campaign on Transportation Funding** MEMO ONLY

VII. ACTION ITEMS

2:10 *A. **Approve 2015 Idaho Legislative Position Statements** Ken Burgess
Page 50 *Ken Burgess will seek approval of 2015 Idaho Legislative Session Position Statements.*

2:25 *B. **Adopt Resolution 06-2015 Approving Revision 1 of the FY2015 Unified Planning Work Program and Budget** Megan Larsen
Page 51 *Megan Larsen will seek adoption of Resolution 06-2015 approving Revision 1 of the FY2015 Unified Planning Work Program and Budget.*

2:40 *C. **Approve Revised Development Review Protocol** Carl Miller
Page 59 *Carl Miller will seek approval of the revised development review protocol.*

VIII. EXECUTIVE DIRECTOR'S REPORT (INFORMATION ONLY) (2:55)

Page 65 *A. **Staff Activity Report**

Page 70 *B. **Status Report – Current Air Quality Efforts**

Page 72 *C. **Status Report – Current Transportation Project Information**

Page 82 *D. **Status Report – Standing Committees' Attendance**

Page 86 *E. **Administrative Modifications**

IX. ADJOURNMENT (3:00)

*Enclosures. Times are approximate. Agenda is subject to change.

T:\FY15\900 Operations\990 Direct Operations Maint\Board\2015 agendaminutes\agenda12152014.docx

**BOARD OF DIRECTORS' MEETING
OCTOBER 20, 2014
COMPASS, 1ST FLOOR BOARD ROOM
700 NE 2ND STREET, MERIDIAN, IDAHO**

****MINUTES****

ATTENDEES: Kathy Alder, Commissioner, Canyon County
Rebecca Arnold, Commissioner, Ada County Highway District
Nichol Baird Spencer for Jim Reynolds, Mayor, City of Eagle
Sara Baker, Commissioner, Ada County Highway District, **Vice Chair**
John Brunelle, Capitol City Development Corporation
Dave Case, Commissioner, Ada County
John Evans, Mayor, Garden City
Kelli Fairless, Valley Regional Transit
Michael Fuss for Paul Raymond, Councilman, City of Nampa
Jim Hansen, Commissioner, Ada County Highway District
Bob Henry, Mayor, City of Nampa
Caleb Hood for Tammy de Weerd, Mayor, City of Meridian
Maryanne Jordan, Councilwoman, City of Boise
Bruce Krosch, Southwest District Health, Ex officio
Kathleen Lacey for Elaine Clegg, Councilwoman, City of Boise
Dave Luft for Pete Wagner, Department of Environmental Quality
Bryce Millar, Commissioner, Nampa Highway District #1, **Immediate Past Chair**
Garret Nancolas, Mayor, City of Caldwell, **Chair Elect**
Greg Nelson, Mayor, City of Kuna
Nicole Nimmons, Boise State University
Brent Orton, City of Caldwell
Amy Revis, Idaho Transportation Department
Charlie Rountree, Councilman, City of Meridian, **Chair**
Matt Stoll, Executive Director, Community Planning Association, Ex officio
Jim Tibbs, Commissioner, Ada County
Rick Yzaguirre, Commissioner, Ada County

MEMBERS

Dave Bieter, Mayor, City of Boise

ABSENT:

Craig Hanson, Commissioner, Canyon County

David Hensley, Governor's Office, Ex officio

Nathan Leigh, Mayor, City of Parma

John McEvoy, Commissioner, Canyon Highway District #4

Luke McHenry, City of Wilder

Nathan Mitchell, Mayor, City of Star

Patrick Rice, Greater Boise Auditorium District, Ex officio

Steven Rule, Commissioner, Canyon County, **Secretary-Treasurer**

Darin Taylor, Mayor, City of Middleton

OTHERS:

Sabrina Anderson, Community Planning Association

Aaron Bauges, Idaho Transportation Department

Nancy Brecks, Community Planning Association

Ken Burgess, Veritas Advisors

Scott Frey, Federal Highway Administration

Jennifer Gonzalez, Idaho Transportation Department

Liisa Itkonen, Community Planning Association

Rhonda Jalbert, Valley Regional Transit

Megan Larsen, Community Planning Association

Megan Leatherman, Ada County

Amy Luft, Community Planning Association

Larry Maneely, Ada County

Don Matson, Community Planning Association

Carl Miller, Community Planning Association

Toni Tisdale, Community Planning Association

Christina Torkelson, Community Planning Association

Charles Trainor, Community Planning Association

Dave Wallace, Ada County Highway District

CALL TO ORDER:

Chair Rountree called the meeting to order at 1:37 pm.

AGENDA ADDITIONS/CHANGES

Matt Stoll requested to add Action Item VII-F Adopt Resolution 03-2015 Supporting Rural Prioritization Projects List.

After discussion, **Maryanne Jordan moved and Sara Baker seconded to add Action Item VII-F Adopt Resolution 03-2015 Supporting the Rural Prioritization Projects List to the agenda. Motion passed unanimously.**

OPEN DISCUSSION/ANNOUNCEMENTS

Matt introduced Sabrina Anderson, COMPASS' new Director of Planning.

CONSENT AGENDA

- A. **Approve September 15, 2014, Board Meeting Minutes**
- B. **Receive Approved August 19 and August 28, 2014, Executive Committee Meeting Minutes**
- C. **Approve List of Records for Destruction**

Dave Case moved and Garret Nancolas seconded approval of the Consent Agenda as presented. Motion passed unanimously.

SPECIAL ITEM

- A. **Status Report - State and Federal Legislative Issues**

Ken Burgess provided a status report on state and federal legislative issues.

ACTION ITEMS

- A. **Adopt Resolution 01-2015 Approving the FY2015-2019 Regional Transportation Improvement Program (TIP) and Air Quality Conformity Demonstration**

Toni Tisdale presented Resolution 01-2015 approving the FY2015-2019 TIP and associated Air Quality Conformity Demonstration. This item had initially been brought to the COMPASS Board in September, but was tabled to allow for public comment on changes proposed by the Idaho Transportation Department after the initial public comment period closed.

After discussion, **Garret Nancolas moved and Bob Henry seconded adoption of Resolution 01-2015 approving the FY2015-2019 Regional Transportation Improvement Program; removing Key Number H324 – US 20/26 and Farmway Road Intersection, Canyon County; eliminating ITD's proposed change to remove Key Number H306, I-84, US 20/26 (Franklin Road) to Caldwell to Franklin Boulevard in Nampa project, and leaving the other priorities intact as described on the Major Changes List. Motion passed unanimously.**

- B. **Adopt Resolution 02-2015 Amending the FY2014-2018 Regional Transportation Improvement Program (TIP)**

Toni Tisdale presented Resolution 02-2015 amending the FY2014-2018 TIP adding new projects from the FY2015-2019 TIP that are scheduled for early FY2015. This will allow new projects to proceed while COMPASS awaits final approval of the FY2015-2019 TIP.

After discussion, **Sara Baker moved and Kathy Alder seconded adoption of Resolution 02-2015 amending the FY2014-2018 Regional Transportation Improvement Program as presented. Motion passed unanimously.**

- C. **Approve Scope of Work for Next *Communities in Motion (CIM)* Update**

Liisa Itkonen presented the scope of work for the next CIM update as recommended for Board approval by the Regional Technical Advisory Committee. The update will be a minor update, maintain 2040 as the horizon year, continue major tenets of CIM 2040, and meet federal requirements and federal certification review recommendations.

After discussion, **Kelli Fairless moved and Maryanne Jordan seconded approval of the scope of work and schedule for the *Communities in Motion* update with the horizon year of 2040 as presented. Motion passed unanimously.**

D. Approve *Transportation Service Coordination Plan* Update

Liisa Itkonen presented the 2014 update to the *Transportation Service Coordination Plan for Ada and Canyon Counties*, which Valley Regional Transit Board approved in September 2014. The plan is required for funding the Federal Transit Administration 5310, Enhanced Mobility for Seniors and Individuals with Disabilities program, and is also a recommended best practice for prioritizing other Federal Transit Administration funding programs.

After discussion, **Maryanne Jordan moved and Kathy Alder seconded approval of the *Transportation Service Coordination Plan* update as presented. Motion passed unanimously.**

E. Approve Employee Health Care Plan Trust Agreement

Megan Larsen requested COMPASS Board approval of the City of Boise Employee Health Care Plan Trust Agreement and Bylaws, and appointment of a Trustee to represent COMPASS.

After discussion, **Garret Nancolas moved and Sara Baker seconded approval of the City of Boise Employee Health Care Plan Trust Agreement and Bylaws with minor corrections to be made. Megan Larsen is approved as the COMPASS trustee. Motion passed unanimously.**

F. Adopt Resolution 03-2015 Supporting Rural Prioritization

Toni Tisdale presented the Rural Prioritization Projects List.

After discussion, **Bryce Millar moved and Sara Baker seconded adoption of Resolution 03-2015 supporting rural prioritization as presented. Motion passed unanimously.**

ADJOURNMENT

Bob Henry moved and Dave Case seconded adjournment at 2:37 pm. Motion passed unanimously.

Dated this 15th day of December 2014.

Approved:

**By: _____
Charlie Rountree, Chair
Community Planning Association of
Southwest Idaho**

Attest:

**By: _____
Matthew J. Stoll, Executive Director
Community Planning Association of
Southwest Idaho**

ITEM V-B

**SPECIAL EXECUTIVE COMMITTEE MEETING
SEPTEMBER 12, 2014
COMPASS, 1ST FLOOR BOARD ROOM
MERIDIAN, IDAHO**

****MINUTES****

ATTENDEES:

Kathy Alder, Commissioner, for Steve Rule, Commissioner, Canyon County, **Secretary-Treasurer**, via telephone
Sara Baker, Commissioner, Ada County Highway District, **Vice Chair**
Elaine Clegg, Councilmember, for Dave Bieter, Mayor, City of Boise
Bob Henry, Mayor, City of Nampa
Megan Leatherman for Dave Case, Commissioner, Ada County
Bryce Millar, Commissioner, Nampa Highway District No.1, **Immediate Past Chair**
Jim Reynolds, Mayor, City of Eagle
Charlie Rountree, Councilman, City of Meridian, **Chair**
Darin Taylor, Mayor, City of Middleton

MEMBERS ABSENT: Garret Nancolas, Mayor, City of Caldwell, **Chair Elect**

OTHERS PRESENT: Sabrina Anderson, Ada County Highway District
Nichoel Baird Spencer, City of Eagle
Nancy Brecks, Community Planning Association
Ken Burgess, Veritas Advisors, via telephone
Tom Ferch, Ada County Highway District
Tina Fuller, Community Planning Association
Megan Larsen, Community Planning Association
Amy Luft, Community Planning Association
Matt Stoll, Executive Director, Community Planning Association
Toni Tisdale, Community Planning Association

CALL TO ORDER:

Chair Rountree called the meeting to order at 2:04 pm.

AGENDA ADDITIONS/CHANGES

None.

OPEN DISCUSSION/ANNOUNCEMENTS

None.

CONSENT AGENDA

- A. Approve August 19, 2014, Executive Committee Meeting Minutes and August 28, 2014, Special Executive Committee Meeting Minutes**

Bryce Millar moved and Darin Taylor seconded approval of the Consent Agenda as presented. Motion passed unanimously.

ACTION ITEMS

- A. Establish October 20, 2014, COMPASS Board Meeting Agenda**

Matt Stoll presented staff proposed Agenda Items 1-14 for the regular October 20, 2014, Board meeting. Matt requested latitude to amend the agenda as appropriate.

After discussion, **Sara Baker moved and Bob Henry seconded approval of Agenda Items 1-14 for the October 20, 2014, Board meeting as presented. Matt Stoll has the latitude to amend the agenda as appropriate. Motion passed unanimously.**

- B. Approve COMPASS Support of Bike Safety Public Service Announcements**

Amy Luft presented a request for COMPASS to contribute \$10,000 in FY2014 cost savings from the COMPASS education/outreach program to a bike safety public service announcement campaign produced and aired by the Boise Police Department, which will run for four weeks in September and October 2014.

After discussion, **Darin Taylor moved and Elaine Clegg seconded approval of the expenditure of \$10,000 for bike safety public service announcements as presented. Motion passed unanimously.**

- C. Discuss Next Steps Regarding FY2014 Federal Obligation Authority Limitation**

Matt Stoll recapped the actions to date regarding the FY2014 Federal Obligation Authority limitation and the Idaho Transportation Department's response to COMPASS' request to keep project funding whole for three FY2014 projects at issue. Matt requested direction on next steps.

By consensus, Matt was directed to decline the Idaho Transportation Department's invitation for COMPASS members to attend the September 18, 2014, Idaho Transportation Board of Directors' meeting at Harriman State Park; request to schedule a workshop at the next Idaho Transportation Board of Directors' meeting in District 3, with the COMPASS Executive Committee and the Idaho Transportation Board of Directors; and Matt will develop a strategy on addressing the long term issues associated with ITD.

INFORMATION/DISCUSSION ITEMS

A. Discuss Draft FY2015-2019 Regional Transportation Improvement Program (TIP)

Toni Tisdale reviewed Idaho Transportation Department's proposed changes to the draft FY2015-2019 TIP, which based on COMPASS policy are substantial enough to extend the public comment period 15 more days.

Staff was directed to invite the Federal Highway Administration to the workshop with the COMPASS Executive Committee and Idaho Transportation Board to present a tutorial for the Idaho Transportation Board on how the transportation department is to work with the MPOs and the TMA.

Staff was directed to develop a COMPASS definition of "substantial."

B. Status Report - Governance Restructuring

Matt Stoll provided a status report on the governance restructuring process that will be presented to the full Board on Monday, September 15, 2014. If approved by the Board, staff will bring proposed revisions of the Joint Power Agreement and the COMPASS Bylaws in October 2014.

ADJOURNMENT

Darin Taylor moved and Elaine Clegg seconded adjournment at 3:25 pm. Motion passed unanimously.

Dated this 21st day of October 2014.

Approved:

**By: _____
Charlie Rountree, Chair
Community Planning Association
of Southwest Idaho**

Attest:

**By: _____
Matthew J. Stoll, Executive Director
Community Planning Association of
Southwest Idaho**



Working together to plan for the future

ITEM V-B

**EXECUTIVE COMMITTEE MEETING
OCTOBER 21, 2014
COMPASS, 2ND FLOOR LARGE CONFERENCE ROOM
MERIDIAN, IDAHO**

****MINUTES****

ATTENDEES:

Sara Baker, Commissioner, Ada County Highway District, **Vice Chair**
Richard Beck for Dave Case, Commissioner, Ada County
Bob Henry, Mayor, City of Nampa
Bryce Millar, Commissioner, Nampa Highway District No.1, **Immediate Past Chair**
Jim Reynolds, Mayor, City of Eagle
Charlie Rountree, Councilman, City of Meridian, **Chair**
Steve Rule, Commissioner, Canyon County, **Secretary-Treasurer**, via telephone
Darin Taylor, Mayor, City of Middleton

MEMBERS ABSENT:

Dave Bieter, Mayor, City of Boise
Garret Nancolas, Mayor, City of Caldwell, **Chair Elect**

OTHERS PRESENT:

Sabrina Anderson, Community Planning Association
Nancy Brecks, Community Planning Association
Ken Burgess, Veritas Advisors, via telephone
Megan Larsen, Community Planning Association
Amy Luft, Community Planning Association
Matt Stoll, Executive Director, Community Planning Association
Christina Torkelson, Community Planning Association
Dave Wallace, Ada County Highway District

CALL TO ORDER:

Chair Rountree called the meeting to order at 2:04 pm.

AGENDA ADDITIONS/CHANGES

None.

OPEN DISCUSSION/ANNOUNCEMENTS

Matt Stoll introduced Sabrina Anderson, COMPASS Director of Planning.

CONSENT AGENDA

A. Approve September 12, 2014, Special Executive Committee Meeting Minutes

Bryce Millar moved and Jim Reynolds seconded approval of the Consent Agenda as presented. Motion passed unanimously.

ACTION ITEM

A. Establish November 17, 2014, COMPASS Board Meeting Agenda

Matt Stoll said due to a light November COMPASS Board meeting agenda, staff recommends canceling the November Board meeting and moving the agenda items to the December 15, 2014, Board agenda.

After discussion, **Sara Baker moved and Bob Henry seconded to move the November 17, 2014, Board meeting agenda items to the December 15, 2014, COMPASS Board meeting agenda. Motion passed unanimously.**

INFORMATION/DISCUSSION ITEMS

A. Discuss Potential Legislation and Position Statements for 2015 Idaho Legislative Session

Ken Burgess led a discussion on potential legislation and position statements for the 2015 Idaho legislative session.

After discussion, **it was agreed to focus on funding, local option tax authority, more money going to the locals, and to remove Bicycle Safety and Transportation Access Plan legislation from the position statements. Ken will bring back revised position statements for Executive Committee review in November 2014 for a recommendation to the full Board in December 2014.**

B. Discuss Process for Identifying and Recommending 2015 Executive Committee Members

Matt Stoll stated based on the established COMPASS Board officer rotation, the 2015 secretary/treasurer should be an Ada County member. Matt was directed to send an email to eligible individuals to solicit interest in the position. The Executive Committee will then select an individual in December 2014 to recommend to the full Board in January 2015.

C. Status Report - COMPASS Restructuring Proposal

Matt Stoll stated that staff just received the draft revised COMPASS Bylaws and Joint Powers Agreement from the attorney. Matt will send them out to the Board and Executive Committee for review. A redlined version will be included in the November Executive Committee meeting packet for a recommendation to the full Board in December 2014, and to provide 30 day notice of intent to modify the Bylaws and Joint Powers Agreement in January 2015.

D. Status Report - Canyon County Membership Dues Formula Analysis

Matt Stoll provided a status report on the Canyon County membership dues formula analysis. A meeting will be scheduled in the next 2-3 weeks with Canyon County entities to begin the discussion of adjusting the dues formula.

OTHER

Matt Stoll said that he, Ken Burgess, and the Secretary/Treasurer from the past year attend the National Association of Regional Councils National Conference of Regions in February of each year. Steve Rule, the current COMPASS Secretary/Treasurer agreed to attend in 2015.

ADJOURNMENT

Chair Rountree adjourned the meeting at 3:00 pm.

Dated this 18th day of November 2014.

Approved:

**By: _____
Charlie Rountree, Chair
Community Planning Association
of Southwest Idaho**

Attest:

**By: _____
Matthew J. Stoll, Executive Director
Community Planning Association of
Southwest Idaho**

COMPASS BOARD AGENDA ITEM V-C

Date: December 15, 2014

Topic: Records for Destruction

Background/Summary:

The COMPASS Board approved the Records Retention Policy at the February 24, 2014, meeting.

The policy describes the type of records that COMPASS has and specifies the retention period for those types of records. The policy further describes the process of destruction for those records that have exceeded their retention period.

In compliance with the policy guidance, COMPASS staff proposes to destruct the records listed on the attachment because those records have exceeded their Board-approved retention period.

COMPASS staff has provided a list of records proposed for destruction to the Idaho state archivist and expects that the state archivist will not object to the destruction of the listed records.

COMPASS staff will have the records destructed by a commercial shredding service 30 days from the date that destruction is approved by both the COMPASS Board and the Idaho state archivist. The shredding service will provide a certification of destruction.

Request/Recommendation:

Approve destruction of the records listed in the attachment.

Implication (policy and/or financial):

If both the COMPASS Board and the Idaho state archivist approve the destruction of the listed records, the destruction will be completed as described. If either the COMPASS Board or the Idaho state archivist do not approve destruction of the listed records, the records will be retained.

More Information:

- 1) Attachment
- 2) For detailed information contact: Megan Larsen, at 475-2228 or mlarsen@compassidaho.org.

COMMUNITY PLANNING ASSOCIATION OF SOUTHWEST IDAHO
Inventory of Records to be Destroyed

Description of record	When created*	Retention period for this record in years	Expiration of retention period	Date list to state archivist	Date of request for Board approval	Date approved by Board	Date approved by state archivist	Destruction date
FY2001 Correspondence with ITD re: STP-Urban program; MPO issues paper presented to ITD 2001 Board Workshop	9/30/2001	2	9/30/2003	12/8/2014	12/15/2014			
FY2003 Supporting documents: Transit congressional applications for new starts; requests for designated transportation projects in the reauthorization of TEA-21	9/30/2003	2	9/30/2005	12/8/2014	12/15/2014			
FY2003 - TIP, 2004-2008 Duplicate copy and supporting documents	9/30/2003	5	9/30/2013	12/8/2014	12/15/2014			
FY2001 Final Air Quality Conformity Demonstration of FY2001-2005 TIP	9/30/2001	5	9/30/2010	12/8/2014	12/15/2014			
FY2003 Northern Ada County PM10 SIP Maintenance Plan and Redesignation Request	9/30/2003	5	9/30/2008	12/8/2014	12/15/2014			
FY2003 Correspondence on Air Quality Planning	9/30/2003	1	9/30/2004	12/8/2014	12/15/2014			
FY2003 RFP for criteria pollutant emissions study	9/30/2003	5	9/30/2010	12/8/2014	12/15/2014			
FY2003 Public comments on 2025 Transportation Plan	9/30/2003	5	9/30/2008	12/8/2014	12/15/2014			
FY2004 Garrity Boulevard from 6th Street to 16th Street project correspondence and comments	9/30/2004	5	9/30/2009	12/8/2014	12/15/2014			
FY2004 Public outreach correspondence - Community Transportation Café	9/30/2004	5	9/30/2009	12/8/2014	12/15/2014			
FY2003 & FY2002 Public comment: Transportation project proposals from the public	9/30/2003	5	9/30/2008	12/8/2014	12/15/2014			
FY2000 Record of public hearing on Destination 2020	9/30/2000	5	9/30/2005	12/8/2014	12/15/2014			
FY2008-FY2013 General administrative correspondence	9/30/2013	1	9/30/2014	12/8/2014	12/15/2014			
FY2007 Professional Service Agreement draft comments	9/30/2007	1	9/30/2008	12/8/2014	12/15/2014			
FY2008 General legal opinion on compensation due to employees who attend educational conferences	9/30/2008	1	9/30/2009	12/8/2014	12/15/2014			

COMMUNITY PLANNING ASSOCIATION OF SOUTHWEST IDAHO
Inventory of Records to be Destroyed

Description of record	When created*	Retention period for this record in years	Expiration of retention period	Date list to state archivist	Date of request for Board approval	Date approved by Board	Date approved by state archivist	Destruction date
FY2006 Legal opinion on procurement requirements involving federal funds and Blueprint for Good Growth	9/30/2006	5	9/30/2011	12/8/2014	12/15/2014			
FY1997 General legal opinion on exempt status	9/30/1997	1	9/30/1998	12/8/2014	12/15/2014			
FY1994 General legal opinion on public meeting requirements	9/30/1994	1	9/30/1995	12/8/2014	12/15/2014			
FY2004 General legal opinion on public records	9/30/2004	1	9/30/2005	12/8/2014	12/15/2014			
FY2004 Draft versions of policies	9/30/2004	1	9/30/2005	12/8/2014	12/15/2014			
FY1987 Legal opinions and correspondence with Idaho State Tax Commission on sales tax exempt status	9/30/1987	5	9/30/1992	12/8/2014	12/15/2014			
FY1996 Dun & Bradstreet filings	9/30/1996	5	9/30/2001	12/8/2014	12/15/2014			
FY2002 Flood Mitigation and Watershed Planning Final Report on Grant Accomplishments	9/30/2002	5	9/30/2007	12/8/2014	12/15/2014			
FY2004 Contract - SolutionPro Terms and Conditions for Hosting	9/30/2004	5	9/30/2009	12/8/2014	12/15/2014			
FY2005 Accounts Payable and Contract Records - Software Purchases and IT support	9/30/2005	5	9/30/2010	12/8/2014	12/15/2014			
Title; 1990 Chevrolet Caprice that has since been disposed		5	9/30/2014	12/8/2014	12/15/2014			
FY2005, FY2006, FY2007, FY2008 Salary Survey data	9/30/2008	5	9/30/2013	12/8/2014	12/15/2014			
FY2002, FY 2004, FY2005, FY2006, FY2007, FY2008 Job Postings and Application Materials	9/30/2008	5	9/30/2013	12/8/2014	12/15/2014			
FY 2003, FY2006 Recruitment and selection records; unsuccessful applicants	9/30/2008	5	9/30/2013	12/8/2014	12/15/2014			
FY 2003 - Supporting workpapers re: analysis for COMPASS cafeteria plan that was effective 1-1-2004 and ended 10-31-2013	9/30/2003	5	9/30/2008	12/8/2014	12/15/2014			
FY1999-FY2009 Job Cost Detail Reports	9/30/2009	5	9/30/2014	12/8/2014	12/15/2014			
FY2002-FY2007 Deposit slip record books	9/30/2007	5	9/30/2012	12/8/2014	12/15/2014			
FY2004, FY2006, FY2008 Bank reconciliations	9/30/2008	5	9/30/2013	12/8/2014	12/15/2014			

COMMUNITY PLANNING ASSOCIATION OF SOUTHWEST IDAHO
Inventory of Records to be Destroyed

Description of record	When created*	Retention period for this record in years	Expiration of retention period	Date list to state archivist	Date of request for Board approval	Date approved by Board	Date approved by state archivist	Destruction date
FY2008 UPWP Supporting Documents used for preparation	9/30/2008	5	9/30/2013	12/8/2014	12/15/2014			
FY2004-FY2006, FY2008-FY2009 Supporting workpapers for annual financial audit	9/30/2009	5	9/30/2014	12/8/2014	12/15/2014			
FY2001-FY2002, FY2006, FY2008, FY2009 Supporting workpapers for annual financial audit	9/30/2009	5	9/30/2014	12/8/2014	12/15/2014			
FY2004-FY2007, FY2009 Supporting workpapers for UPWP and budget	9/30/2007	5	9/30/2012	12/8/2014	12/15/2014			
FY2008 and FY2009 Employee pay stubs	9/30/2009	5	9/30/2014	12/8/2014	12/15/2014			
FY2003-FY2006, FY2008-FY2009 Receipts and supporting documentation from orthophotography map sales	9/30/2004	5	9/30/2009	12/8/2014	12/15/2014			
FY1999-FY2002, FY2004-FY2008 General journal entries and supporting documentation	9/30/2007	5	9/30/2012	12/8/2014	12/15/2014			
FY2004, FY2006, FY2007, FY2009 Variance reports	9/30/2009	5	9/30/2014	12/8/2014	12/15/2014			
FY2002, FY2003, FY2005-FY2009 federal grant billing files	9/30/2009	5	9/30/2012	12/8/2014	12/15/2014			
FY2000 Third party employee hand book review	9/30/2000	5	9/30/2005	12/8/2014	12/15/2014			
FY2001, FY2003-FY2004, FY2007, FY2009 Financial reports and supporting documents for financial reports	9/30/2004	5	9/30/2009	12/8/2014	12/15/2014			
FY2002, FY2007-FY2009 Cash receipts records	9/30/2009	5	9/30/2014	12/8/2014	12/15/2014			
FY2004 Supporting documents for agreed upon procedures with Balukoff Lindstrom	9/30/2004	5	9/30/2009	12/8/2014	12/15/2014			
FY2003 Canyon County Expense Analysis	9/30/2003	5	9/30/2008	12/8/2014	12/15/2014			
FY2004 Indirect cost allocation rate, approval and supporting workpapers	9/30/2004	5	9/30/2009	12/8/2014	12/15/2014			
FY2005 COMPASS Planning Certification Review supporting documentation	9/30/2005	5	9/30/2010	12/8/2014	12/15/2014			

COMMUNITY PLANNING ASSOCIATION OF SOUTHWEST IDAHO
Inventory of Records to be Destroyed

Description of record	When created*	Retention period for this record in years	Expiration of retention period	Date list to state archivist	Date of request for Board approval	Date approved by Board	Date approved by state archivist	Destruction date
FY1992-FY2009 accounts payable records for employee benefit payments, including check stubs from payments, COMPASS request for payment forms, and vendor invoices.	9/30/1993	5	9/30/1998	12/8/2014	12/15/2014			
FY2003 potential tax liability on cafeteria plan; calculations and correspondence	9/30/2003	5	9/30/2008	12/8/2014	12/15/2014			
FY1998 reports detailing transactions posted in the general ledger	9/30/1998	5	9/30/2003	12/8/2014	12/15/2014			
FY2009 Membership dues billing and receipt records	9/30/2009	5	9/30/2014	12/8/2014	12/15/2014			
FY 2001 Accounts Receivable entries and supporting documentation	9/30/1994	5	9/30/1999	12/8/2014	12/15/2014			

*If the description covers a group of records, the date refers to the most recent record in the group.



**2015 COMPASS Board Meeting Dates
COMPASS 1st Floor Board Room
1:30 -3:30 pm**

January 26, 2015
February 23, 2015
March 16, 2015
April 20, 2015
May 18, 2015
June 15, 2015
July 20, 2015
August 17, 2015
September 21, 2015
October 19, 2015
November, 16, 2015
December 21, 2015 (Nampa Civic Center)

**2015 COMPASS Executive Committee Meeting Dates
COMPASS 2nd Floor Large Conference Room
2:00 -3:30 pm**

January 13, 2015
February 17, 2015
March 10, 2015
April 14, 2015
May 12, 2015
June 2, 2015
July 14, 2015
August 11, 2015
September 8, 2015
October 13, 2015
November, 10, 2015
December 8, 2015

T:\FY15\900 Operations\990 Direct Operations Maint\Board\2015 Board and Executive Committee Meeting Dates.docx

COMPASS BOARD AGENDA ITEM V-E

DATE: October 20, 2014

Topic: Amend FY2015-2019 Regional Transportation Improvement Program (TIP)

Request/Recommendation:

Staff seeks Board adoption of Resolution 04-2015 amending the FY2015-2019 TIP.

Background/Summary:

On August 14, 2014, the Transportation Management Area Balancing Committee recommended switching funding years between the State Street and Collister Drive Intersection and the Garden City to Americana Pathway projects. The recommendation was held for processing until after the COMPASS Board approved the FY2015-2019 Regional Transportation Improvement Program (TIP), to alleviate confusion in the sequencing of the TIP approval process. Details of these actions are provided in Resolution 04-2015 (Attachment 1).

ITD requests the addition of three projects to the FY2015-2019 TIP; two Farmway Road Intersection projects and a minor road striping project. A public comment period was open for consideration of these projects from November 17 through December 1, 2014. The Regional Technical Advisory Committee did not review these changes as the COMPASS Board was aware of the request. Comments received are provided in Attachment 2.

After review of the final Idaho Transportation Investment Program (ITIP), COMPASS staff recommends changes to the Nampa Library Block and Peckham Road projects for consistency with the TIP. These changes do not change overall project funding. Details of these actions are provided in Attachment 1.

Implication (policy and/or financial):

Without COMPASS Board approval to amend the TIP, these projects cannot be obligated and move forward.

More Information:

- 1) Attachment 1 – Resolution 04-2015
- 2) Attachment 2 – FY2015-2019 TIP Public Comments
- 3) For detailed information contact: Toni Tisdale, Principal Planner, at 475-2238 or ttisdale@compassidaho.org.

TT:nb T:\FY15\600 Projects\685 TIP\FY1519TIP\141215mmoBDamend1.docx

RESOLUTION NO. 04-2015

FOR THE PURPOSE OF AMENDING THE FY2015-2019 REGIONAL TRANSPORTATION IMPROVEMENT PROGRAM

WHEREAS, the Community Planning Association of Southwest Idaho has been designated by the Governor of Idaho as the metropolitan planning organization responsible for transportation planning in Ada and Canyon Counties;

WHEREAS, the Moving Ahead for Progress in the 21st Century (MAP-21) Act, Title 23 United States Code Section 134, and Title 49 United States Code Section 5303 requires metropolitan planning organizations to develop and approve a Transportation Improvement Program;

WHEREAS, MAP-21, Title 23 United States Code Section 134, and Title 49 United States Code Section 5303 require projects contained in the Transportation Improvement Program to be financially constrained;

WHEREAS, the 1990 Clean Air Act Amendments requires all transportation plans and programs in nonattainment or maintenance areas demonstrate conformity to applicable state implementation plans for air quality improvement;

WHEREAS, no additional review for air quality conformity is necessary for this action;

WHEREAS, MAP-21, Title 23 United States Code Section 134, and Title 49 United States Code Section 5303 requires Transportation Improvement Programs be developed and amended in consultation with all interested parties;

WHEREAS, a public comment period was open from November 17 through December 1, 2014 regarding new projects proposed for the program;

WHEREAS, the Community Planning Association of Southwest Idaho desires to take timely action to ensure the availability of federal funds;

WHEREAS, the Community Planning Association of Southwest Idaho developed this amendment to the FY2015-2019 Regional Transportation Improvement Program in compliance with all applicable state and federal regulations; and

WHEREAS, the attached table dated August 14, 2014, details the amendment to the FY2015-2019 Regional Transportation Improvement Program.

NOW, THEREFORE, BE IT RESOLVED, that the Community Planning Association of Southwest Idaho Board of Directors approves the amendment to the FY2015-2019 Regional Transportation Improvement Program.

DATED this 15th day of December 2014.

APPROVED:

By: _____
Charlie Rountree, Chair
Community Planning Association
of Southwest Idaho Board of Directors

ATTEST:

By: _____
Matthew J. Stoll, Executive Director
Community Planning Association
of Southwest Idaho

T:\FY15\900 Operations\990 Direct Operations Maint\Board\2015 Resolutions\Resolution 04-2015.docx

Amendment #1
 FY2015-2019 Regional Transportation Improvement Program
 Per TMA Balancing, August 14, 2014

Key No	Project	Scheduled Costs (including Match) (costs in \$1,000)							
		Cost year	PE	PEC	RW	UT	CE	CN	SUM
13481	State Street and Collister Drive Intersection, ACHD	2015			385				385
	Funding Source: STP-TMA	2016			0				0
	Intersection improvements at State Street and Collister Drive in the City of Garden City.	2017			125				125
		2018					610	4030	4640
		2019							0
		PD							0
	Increase RW by \$125,000 in FY2016 to cover increased costs to move a billboard. Funds from KN 13514. The trade allows more efficient funding for both projects.	SUM	0	0	385 510	0	610	4030	5025 5150
13514	Pathway, Garden City to Americana Boulevard, Boise	2015		77	110	50	245	921	1403
	Funding Source: STP-TMA	2016						125	125
	Construct a new 12-foot wide paved pathway south of the Boise River to fill a significant 4,100 linear gap in the greenbelt system. The pathway will extend from Main Street (Joe's Crab Shack) to Ann Morrison Park at Americana Boulevard to serve pedestrians and bicyclists.	2017							0
		2018							0
		2019							0
		PD							0
	Decrease CN by \$125,000 in FY2016 and move to KN 13481. This action is also described in Administrative Modification #1.	SUM	0	77	110	50	245	1046 921	1528 1403
13514	Pathway, Garden City to Americana Boulevard, Boise	2015							0
	Funding Source: Community Choices	2016						353	353
	Same as above.	2017							0
		2018							0
		2019							0
		PD							0
	No change to this funding source.	SUM	0	0	0	0	0	353	353
13514	Pathway, Garden City to Americana Boulevard, Boise	2015						25	25
	Funding Source: Local Participating	2016							0
	Same as above.	2017							0
		2018							0
		2019							0
		PD							0
	No change to this funding source.	SUM	0	0	0	0	0	25	25
13514	Pathway, Garden City to Americana Boulevard, Boise	2015						220	220
	Funding Source: TAP-TMA	2016						255	255
	Same as above.	2017							0
		2018							0
		2019							0
		PD							0
	No change to this funding source.	SUM	0	0	0	0	0	475	475

Per Staff Review, October 27, 2014
Public Comment November 17 through December 1, 2014

Key No	Project	Scheduled Costs (including Match) (costs in \$1,000)							
		Cost year	PE	PEC	RW	UT	CE	CN	SUM
18818	I-84, Pavement Striping – FY2019	2015	ϑ <u>15</u>						ϑ <u>15</u>
	Funding Source: Restoration Restripe I-84 corridor. <i>Add project. It was inadvertently missed during the update cycle.</i>	2016							0
		2017							0
		2018							0
		2019					ϑ <u>15</u>	ϑ <u>330</u>	ϑ <u>345</u>
		PD							0
		SUM	ϑ <u>15</u>	0	0	0	ϑ <u>15</u>	ϑ <u>330</u>	ϑ <u>360</u>
18852	US 20/26 and Farmway Road Intersection, Canyon County	2015							0
	Funding Source: Restoration Project will add a left-turn lane on north-bound US 20/26 to Farmway Road and add a flashing beacon to existing warning signs. <i>Add project. It was originally in the draft TIP, but was changed incorrectly by ITD staff. With known errors, the TIP was approved specifically without this project to allow for public comment and corrections.</i>	2016							0
		2017							0
		2018						ϑ <u>400</u>	ϑ <u>400</u>
		2019							0
		PD							0
		SUM	0	0	0	0	0	ϑ <u>400</u>	ϑ <u>400</u>
18841	SH-55 and Farmway Road Intersection, Canyon County	2015							0
	Funding Source: Safety This project will rehabilitate, widen, and signalize the intersection of SH-55 and Farmway Road in Canyon County. Project will add left-turn lanes on the north and south-bound Farmway Road. On SH-55, a combination of right-turn and auxiliary through lanes will be added with dedicated left turn lanes and one continuous through lane for each side, for a total of five 12-foot lanes on the SH-55 legs and three 12-foot lanes on Farmway Road. <i>Add project.</i>	2016							0
		2017							0
		2018					ϑ <u>300</u>	ϑ <u>2700</u>	ϑ <u>3000</u>
		2019							0
		PD							0
		SUM	0	0	0	0	ϑ <u>300</u>	ϑ <u>2700</u>	ϑ <u>3000</u>

Per Staff Review, October 27, 2014

Key No	Project	Scheduled Costs (including Match) (costs in \$1,000)							
		Cost year	PE	PEC	RW	UT	CE	CN	SUM
13933	I-84B, Nampa Library Block, Nampa	2015						0	0
								485	485
	Funding Source: Restoration	2016							0
		2017							0
	Project will rehabilitate the pavement and change traffic flow around the library block (2 nd and 3 rd Streets) in downtown Nampa.	2018							0
		2019							0
		PD							0
	SUM	0	0	0	0	0	0	0	
							485	485	
	Carry over project from FY2014. Project was constructed in summer 2014, so it was removed from update. It is a state-funded project with fiscal year starting July 1 st , and should remain in program.								
13964	Peckham Road, US-95 to Notus Road, Canyon County	2015	16	348					364
			0	0					0
	Funding Source: STP-R	2016	0	0					0
			16	348					364
	Project will rehabilitate the pavement and change traffic flow around the library block (2 nd and 3 rd Streets) in downtown Nampa.	2017							0
		2018							0
		2019							0
	PD					310	1520	1830	
	SUM	16	348	0	0	310	1520	2194	
	Delay design from FY2015 to FY2016. Correction was made by LHTAC at the request of Golden Gate Highway District.								

PE = Preliminary Engineering

PC = Preliminary Engineering Consultant

RW = Right-of-Way

UT = Utilities

CE = Construction Engineering

CN = Construction

FY = Fiscal Year

KN = Key Number

STP-TMA = Surface Transportation Program – Transportation Management Area (Boise)

STP-R = Surface Transportation Program - Rural

TAP-TMA = Transportation Alternatives Program – Transportation Management Area (Boise)

T:\FY15\600 Projects\685 TIP\FY1519TIP\Amendments\Amend1.docx

FY2015-2019 Regional Transportation Improvement Program (TIP) Public Comments

Comments for Amendment #1 November 17 through December 1, 2014

Number of comments received: Email: 7 Letter: 0 Phone: 1

Comment	Staff Response	Zip Code and Name/affiliation (if included)	Format
On the US 20/26 and Farmway intersection, I think a traffic signal would be better than a warning signal, if funding is available. I think it would be better that way. I think a warning signal is a waste of money and time...Do it right the first time.	Comment provided to the COMPASS Board of Directors and the Idaho Transportation Department	Carol Meek	Phone
<p>I realize there is limited ability for COMPASS to respond to the requests of the Treasure Valley citizens given the strangulation by the federal government and inflexible criteria on how transportation dollars can be spent. COMPASS is being forced into ridiculous positions of making sure roads have been evaluated for environmental justice, taking up valuable road space for the enormously limited numbers of people who ride bikes, and forced planning for mass transportation as boundaries of growth are set around our towns which force people into a more dense area. Perhaps if money was not wasted on such agenda driven projects there would be more money to invest in the improvement of our roads such as cited by so many citizens regarding the freeway section between Nampa and Caldwell.</p> <p>Regardless, I would like to direct you to two items for your future. This is the eventual goal of our federal government, perhaps your planning could get a jump start and just start planning for this now.</p> <p>http://www.activistpost.com/2012/07/agenda-21-dense-megacities-of-future.html http://agenda21news.com/2014/08/nightmarish-megacities-near-future/</p> <p>Happening in California and will eventually come to us http://www.america2050.org/</p> <p>And the UN plan for megacities http://www.unep.org/search.asp?q=megacities&sa.x=0&sa.y=0&cx=007059379654755265211%3Ajknqjgnyii&cof=forid%3A11 and megaregions http://www.unep.org/search.asp?sa.x=0&sa.y=0&q=megaregions&cx=007059379654755265211%3Ajknqjgnyii&cof=forid%3A11&siteurl=http%3A%2F%2Fwww.unep.org%2F</p>	Comments provided to the COMPASS Board of Directors and the Idaho Transportation Department	Anonymous	Email

Comment	Staff Response	Zip Code and Name/affiliation (if included)	Format
<p>Thank you for the opportunity to comment on the proposed Transportation Improvement Plan amendments including:</p> <ul style="list-style-type: none"> • A pavement restriping project on I-84 in Ada and Canyon Counties • Minor improvements at the intersection of US 20/26 and Farmway Road in Canyon County • Major improvements at the intersection of State Highway 55 and Farmway Road in Canyon County <p>We offer the following comments:</p> <ol style="list-style-type: none"> 1. Work on I-84 is essential. Amidst an entire network of critical highways and surface streets, Interstate 84 is a backbone for interstate and local travel, freight, and economy. We support needed improvements on I-84 and would again strongly encourage planning of both reconstruction and capacity improvements on Interstate from Nampa through Caldwell. 2. Improvements on State Highway 55 are certainly needed. Planned signalization projects will provide significant relief of congestion and will improve safety on that corridor. Both for the proposed Farmway and SH55 project as well as others, it is critical that design efforts and planning be synchronous with Idaho Transportation Department's Corridor plan for this area. Aligning present design work with the plan will help minimize loss of invested tax dollars, loss of infrastructure that might have to be replaced in a more costly way to enact the plan (if not built according to or harmoniously with it), and will initiate the measurable benefits of the plan immediately with the construction of three and now one more signalization project on this important corridor. <p>Sincere thanks for your consideration!</p>	<p>Comments provided to the COMPASS Board of Directors and the Idaho Transportation Department</p>	<p>Brent Orton, City of Caldwell</p>	<p>Email</p>
<p>Hello! Thank you for sending out the e-mail.</p> <p>I am wondering about a couple things in particular:</p> <ol style="list-style-type: none"> 1) What ever happened to the work that was to be done at the intersection of Karcher (Hwy 55) and Middleton? I thought that was supposed to be done a year or two ago. 2) There is a new high school being built just a mile South of Hwy 20-26. That area has been mostly farm land for a very long time, and I am concerned about the impact on the infrastructure, particularly the traffic implications. Is there something that can be done ahead of time to curb the issues that will surely come? I haven't seen anything about that in the plans (unless I missed it) <p>My comment is that we ought to focus on getting some of these on the books (and finished in the case of Karcher/Middleton) before moving forward further with other projects.</p>	<p>Comments provided to the COMPASS Board of Directors and the Idaho Transportation Department</p> <p>Staff response to Mr. Thompson: The Karcher/ Middleton project was obligated at the end of the summer 2014 and recently bid for construction. Work on that project will begin when the weather permits.</p> <p>I am not familiar with the school you are talking about that will be south of US 20/26. I will have someone here look into the issue and get back with you.</p> <p>***</p>	<p>Doug Thompson</p>	<p>Email</p>

Comment	Staff Response	Zip Code and Name/affiliation (if included)	Format
	<p>Thanks for your comments and information on the new high school.</p> <p>COMPASS is also concerned about large traffic generators. COMPASS provides information to the local land use agencies to indicate the impact of new developments on the transportation network. With the newest COMPASS long-range transportation plan, <i>Communities in Motion 2040</i>, our elected officials have asked us to increase our consideration of the role of transportation and the impact on farmland, housing, open space, and other quality of life issues. That information will now be included in our development reviews as well. Authority to grant approval or denial is still completely within the city or county's purview.</p>		

Comment	Staff Response	Zip Code and Name/affiliation (if included)	Format
<p>Can you explain the difference to me between the 2 projects (18852 & 18841) on Farmway Road in Canyon Co. and also tell me where they are located?</p> <p><i>[Staff responded]</i></p> <p>Thanks Toni, I had a hard time finding Farmway but finally did and I thought this might be case but wasn't sure. How well do these projects fit into CIM? Will either include any infrastructure for bike/ped? I'm not seeing bike in either description and I think at least adequate ROW reserved for bike lanes on 20/26 might be a good idea.</p> <p><i>[Staff responded]</i></p> <p>...Thanks Toni. I expected that there would be no facilities leading up to these intersections. I know staff has proposed developing a regional bike plan, not sure it includes ped, but this is a good example of why COMPASS should do this. Something I fully support. We can't know whether a project needs to add either infrastructure if there is not plan. Has anyone looked at Caldwell's and Nampa's plans to make sure they don't have something in their plans that will connect to either in the future? If not I recommend this be included in the review.</p>	<p>Comments provided to the COMPASS Board of Directors and the Idaho Transportation Department</p> <p>Staff responses to Ms. Smith: These are on opposite ends of Farmway. One for \$400,000 is at US 20/26 and Farmway. The other for about \$3,000,000 is at SH-55 (Karcher) and Farmway.</p> <p>Hopefully this helps. Call me on my cell if you would like more details. ***</p> <p>These are both safety/ intersection projects. Since there are no bike/ped facilities in the area leading up to the intersection, no bike/ped facilities are proposed for the intersection project at this time. No right-of-way acquisition is expected for either project. Your concerns will be shared with ITD for consideration during design.</p>	<p>83702 Deanna Smith, Idaho Smart Growth Department</p>	<p>Email</p>
<p>These comments are in support of the TIP Amendments to the projects listed here. The Improvements to State Hwy 55 at Farmway Road are particularly important due to the high number of fatal crashes there. We deeply appreciate your attention and inclusion of this in the list of projects to be completed in FY 2015-2019.</p> <ul style="list-style-type: none"> • A pavement restriping project on I-84 in Ada and Canyon Counties • Minor improvements at the intersection of US 20/26 and Farmway Road in Canyon County • Major improvements at the intersection of State Highway 55 and Farmway Road in Canyon County 	<p>Comments provided to the COMPASS Board of Directors and the Idaho Transportation Department</p>	<p>83686 LaRita Schandorff, Bike Walk Nampa</p>	<p>Email</p>

Comment	Staff Response	Zip Code and Name/affiliation (if included)	Format
<p>I do not have any concern with the three added projects and I feel they are warranted. However, I am concerned with project 12046 the Karcher Road (SH 55) and Middleton Road intersection. This was slatted for 2014 and I'm not sure if it has actually been completed, but that intersection is a huge problem for commuters and you can spend an extreme amount of time sitting at that intersection. I think that intersection needs to be seriously looked at for widening, round about or something. I think it should be put back on the list for some major change.</p> <p>That's my two cents. Thanks.</p>	<p>Comments provided to the COMPASS Board of Directors and the Idaho Transportation Department</p> <p>Staff response to Ms. Burrows: The Karcher/Middleton intersection was obligated in late summer 2014, and was recently bid for construction. Work should begin as weather permits. (Once funds are obligated, the project is no longer shown in the Regional Transportation Improvement Program.)</p>	<p>Wendy Burrows City of Wilder</p>	<p>Email</p>
<p>I know that a new hearing will be held on Jan 15, 2015 regarding the development of the property between Gary and State by the Hawkins company. It seems to me that if this area is to be a "transportation node" that here should be retail and a parking structure with limited residential units. If people are to use public transportation from this "node" they will need parking--a very limited number of people will actually walk to this "node." Planning ahead for when there is a train or other HOV transportation up and down State Street, there needs to be parking. Look at BART and the Sacramento trains and you will see large parking near the nodes. Some are already inadequate. It would be smart that we plan ahead for this eventuality. Filling this land with a large residential development is short sighted and not in the best interests of being fiscally responsible.</p>	<p>Comments provided to the COMPASS Board of Directors Valley Regional Transit, and City of Boise</p>	<p>Claudia Fernsworth</p>	<p>Email</p>

T:\FY15\600 Projects\685 TIP\FY15TIP\Public Comment\Public_Comments_Amend1.docx

COMPASS BOARD AGENDA ITEM V-F

DATE: December 15, 2014

Topic: Amend FY2014-2018 Regional Transportation Improvement Program (TIP)

Request/Recommendation:

Staff seeks Board adoption of Resolution 05-2015 amending the FY2014-2018 TIP.

Background/Summary:

The FY2014-2018 Regional Transportation Improvement Program (TIP) is the official TIP until the FY2015-2019 TIP is federally approved, which is expected in January 2015. New projects, or those including changes, in FY2015 in the FY2015-2019 TIP, requiring obligation of funds through January 31, 2015, need to be added to the FY2014-2018 TIP to ensure timely obligations. All of these projects fall into this category and need Board action. These actions are the same as those proposed for the FY2015-2019 TIP, and are detailed in Resolution 05-2014 (Attachment 1). The Regional Technical Advisory Committee did not review these changes because the Board was already involved in the major changes, and the remainder were recommended by the Transportation Management Area Balancing Committee or are mirroring issues to finalize the TIP update.

Implication (policy and/or financial):

Without action from the COMPASS Board to amend the TIP, these projects cannot be obligated or move forward.

More Information:

- 1) Attachment 1 – Resolution 05-2015
- 2) For detailed information contact: Toni Tisdale, Principal Planner, at 475-2238 or ttisdale@compassidaho.org.

TT:nb T:\FY15\600 Projects\685 TIP\FY1418TIP\141215mmoBDamend8.docx

RESOLUTION NO. 05-2015

FOR THE PURPOSE OF AMENDING THE FY2014-2018 REGIONAL TRANSPORTATION IMPROVEMENT PROGRAM

WHEREAS, the Community Planning Association of Southwest Idaho has been designated by the Governor of Idaho as the metropolitan planning organization responsible for transportation planning in Ada and Canyon Counties;

WHEREAS, the Moving Ahead for Progress in the 21st Century (MAP-21) Act, Title 23 United States Code Section 134, and Title 49 United States Code Section 5303 requires metropolitan planning organizations to develop and approve a Transportation Improvement Program;

WHEREAS, MAP-21, Title 23 United States Code Section 134, and Title 49 United States Code Section 5303 require projects contained in the Transportation Improvement Program to be financially constrained;

WHEREAS, the 1990 Clean Air Act Amendments requires all transportation plans and programs in nonattainment or maintenance areas demonstrate conformity to applicable state implementation plans for air quality improvement;

WHEREAS, no additional review for air quality conformity is necessary for this action;

WHEREAS, MAP-21, Title 23 United States Code Section 134, and Title 49 United States Code Section 5303 requires Transportation Improvement Programs be developed and amended in consultation with all interested parties;

WHEREAS, a public comment period was open from November 17 through December 1, 2014 regarding new projects proposed for the program;

WHEREAS, the Community Planning Association of Southwest Idaho desires to take timely action to ensure the availability of federal funds;

WHEREAS, the Community Planning Association of Southwest Idaho developed this amendment to the FY2014-2018 Regional Transportation Improvement Program in compliance with all applicable state and federal regulations; and

WHEREAS, the attached table dated August 14, 2014, details the amendment to the FY2014-2018 Regional Transportation Improvement Program.

NOW, THEREFORE, BE IT RESOLVED, that the Community Planning Association of Southwest Idaho Board of Directors approves the amendment to the FY2014-2018 Regional Transportation Improvement Program.

DATED this this 15th day of December 2014.

APPROVED:

By: _____
Charlie Rountree, Chair
Community Planning Association
of Southwest Idaho Board of Directors

ATTEST:

By: _____
Matthew J. Stoll, Executive Director
Community Planning Association
of Southwest Idaho

T:\FY15\900 Operations\990 Direct Operations Maint\Board\2015 Resolutions\Resolution 05-2015.docx

Amendment #8
 FY2014-2018 Regional Transportation Improvement Program
 Per TMA Balancing, August 14, 2014

Key No	Project	Scheduled Costs (including Match) (costs in \$1,000)							
		Cost year	PE	PEC	RW	UT	CE	CN	SUM
13481	State Street and Collister Drive Intersection, ACHD	2015			385				385
	Funding Source: STP-TMA	2016			0				0
	Intersection improvements at State Street and Collister Drive in the City of Garden City.	2017					610	4030	4640
		2018							0
		2019							0
		PD							0
	Increase RW by \$125,000 in FY2016 to cover increased costs to move a billboard. Funds from KN 13514. The trade allows more efficient funding for both projects.	SUM	0	0	385 510	0	610	4030	5025 5150
13514	Pathway, Garden City to Americana Boulevard, Boise	2015		77	110	50	245	921	1403
	Funding Source: STP-TMA	2016						125 0	125 0
	Construct a new 12-foot wide paved pathway south of the Boise River to fill a significant 4,100 linear gap in the greenbelt system. The pathway will extend from Main Street (Joe's Crab Shack) to Ann Morrison Park at Americana Boulevard to serve pedestrians and bicyclists.	2017							0
		2018							0
		2019							0
		PD							0
	Decrease CN by \$125,000 in FY2016 and move to KN 13481. This action is also described in Administrative Modification #1.	SUM	0	77	110	50	245	1046 921	1528 1403
13514	Pathway, Garden City to Americana Boulevard, Boise	2015							0
	Funding Source: Community Choices	2016						353	353
	Same as above.	2017							0
		2018							0
		2019							0
		PD							0
	No change to this funding source.	SUM	0	0	0	0	0	353	353
13514	Pathway, Garden City to Americana Boulevard, Boise	2015						25	25
	Funding Source: Local Participating	2016							0
	Same as above.	2017							0
		2018							0
		2019							0
		PD							0
	No change to this funding source.	SUM	0	0	0	0	0	25	25
13514	Pathway, Garden City to Americana Boulevard, Boise	2015						220	220
	Funding Source: TAP-TMA	2016						255	255
	Same as above.	2017							0
		2018							0
		2019							0
		PD							0
	No change to this funding source.	SUM	0	0	0	0	0	475	475

Per Staff Review, October 27, 2014
Public Comment November 17 through December 1, 2014

Key No	Project	Scheduled Costs (including Match) (costs in \$1,000)							
		Cost year	PE	PEC	RW	UT	CE	CN	SUM
18818	I-84, Pavement Striping – FY2019	2015	ϑ <u>15</u>						ϑ <u>15</u>
	Funding Source: Restoration Restripe I-84 corridor. <i>Add project. It was inadvertently missed during the update cycle.</i>	2016							0
		2017							0
		2018							0
		2019					ϑ <u>15</u>	ϑ <u>330</u>	ϑ <u>345</u>
		PD							0
		SUM	ϑ <u>15</u>	0	0	0	ϑ <u>15</u>	ϑ <u>330</u>	ϑ <u>360</u>
18852	US 20/26 and Farmway Road Intersection, Canyon County	2015							0
	Funding Source: Restoration Project will add a left-turn lane on north-bound US 20/26 to Farmway Road and add a flashing beacon to existing warning signs. <i>Add project. It was originally in the draft TIP, but was changed incorrectly by ITD staff. With known errors, the TIP was approved specifically without this project to allow for public comment and corrections.</i>	2016							0
		2017							0
		2018						ϑ <u>400</u>	ϑ <u>400</u>
		2019							0
		PD							0
		SUM	0	0	0	0	0	ϑ <u>400</u>	ϑ <u>400</u>
18841	SH-55 and Farmway Road Intersection, Canyon County	2015							0
	Funding Source: Safety This project will rehabilitate, widen, and signalize the intersection of SH-55 and Farmway Road in Canyon County. Project will add left-turn lanes on the north and south-bound Farmway Road. On SH-55, a combination of right-turn and auxiliary through lanes will be added with dedicated left turn lanes and one continuous through lane for each side, for a total of five 12-foot lanes on the SH-55 legs and three 12-foot lanes on Farmway Road. <i>Add project.</i>	2016							0
		2017							0
		2018					ϑ <u>300</u>	ϑ <u>2700</u>	ϑ <u>3000</u>
		2019							0
		PD							0
		SUM	0	0	0	0	ϑ <u>300</u>	ϑ <u>2700</u>	ϑ <u>3000</u>

Per Staff Review, October 27, 2014

Key No	Project	Scheduled Costs (including Match) (costs in \$1,000)							
		Cost year	PE	PEC	RW	UT	CE	CN	SUM
13933	I-84B, Nampa Library Block, Nampa	2015						0	0
								485	485
	Funding Source: Restoration	2016							0
		2017							0
	Project will rehabilitate the pavement and change traffic flow around the library block (2 nd and 3 rd Streets) in downtown Nampa.	2018							0
		2019							0
		PD							0
	SUM	0	0	0	0	0	0	0	
							485	485	
	Carry over project from FY2014. Project was constructed in summer 2014, so it was removed from update. It is a state-funded project with fiscal year starting July 1 st , and should remain in program.								
13964	Peckham Road, US-95 to Notus Road, Canyon County	2015	16	348					364
			0	0					0
	Funding Source: STP-R	2016	0	0					0
			16	348					364
	Project will rehabilitate the pavement and change traffic flow around the library block (2 nd and 3 rd Streets) in downtown Nampa.	2017							0
		2018							0
		2019							0
	PD					310	1520	1830	
	SUM	16	348	0	0	310	1520	2194	
	Delay design from FY2015 to FY2016. Correction was made by LHTAC at the request of Golden Gate Highway District.								

PE = Preliminary Engineering

PC = Preliminary Engineering Consultant

RW = Right-of-Way

UT = Utilities

CE = Construction Engineering

CN = Construction

FY = Fiscal Year

KN = Key Number

STP-TMA = Surface Transportation Program – Transportation Management Area (Boise)

STP-R = Surface Transportation Program - Rural

TAP-TMA = Transportation Alternatives Program – Transportation Management Area (Boise)

T:\FY15\600 Projects\685 TIP\FY1418TIP\Amendments\Amend8.docx

COMPASS BOARD AGENDA ITEM V-G

Date: December 15, 2014

Topic: **Approve *Communities in Motion 2040 2.0* Public Involvement Plan**

Request/Recommendation:

Staff seeks Board approval of the public involvement plan for *Communities in Motion 2040 2.0*.

Background/Summary:

A first step in developing or updating a long-range transportation plan is creating a public involvement plan. COMPASS staff worked with the Public Participation Committee to develop a public involvement plan for the update to *Communities in Motion 2040* ("*Communities in Motion 2040 2.0*"); the Public Participation Committee recommended Board approval of the attached draft public involvement plan in its September 2014 meeting.

The attached *Communities in Motion 2040 2.0* public involvement plan was developed based on the scope of work for *Communities in Motion 2040 2.0*, is consistent with the COMPASS Public Involvement Policy, and focuses on two primary goals: educate/inform the public and engage the public as active participants. Outreach strategies are divided into three sections: ongoing outreach, public participation in evaluating the future transportation system (2016), and public comment on the draft plan (2018).

The public involvement plan includes using a stakeholder outreach matrix; using quarterly email updates, social media, and other ongoing outreach tools; soliciting public comment prior to major policy decisions, particularly the refinement of the future transportation system; and soliciting public feedback on the draft plan. The public involvement plan includes open houses in 2016 and 2018 and virtual open houses in 2018. In addition, the public involvement plan proposes the use of an online outreach tool in 2016 to assist the public in analyzing their own priorities and using that analysis to provide feedback on the future transportation system. In addition to the specific tools and outreach processes described in the plan, COMPASS staff will continually seek out additional outreach opportunities and methods.

Implication (policy and/or financial):

A Board-approved public involvement plan is a federal requirement for long-range transportation plans. More importantly, it lets the public know when to anticipate public involvement opportunities and guides staff in ensuring effective outreach to the general public and targeted stakeholders.

More Information:

1. Attachment – DRAFT Public Involvement Plan for *Communities in Motion 2040 2.0*.
2. For detailed information, contact Amy Luft at aluft@compassidaho.org or 475-2229.

AL:nb t:\fy15\600 projects\661 cim\1. public participation\pip\board_mmo_cimpip_dec2014.docx



Communities in Motion 2040 2.0

Long-Range Transportation Plan

Public Involvement Plan

**Community Planning Association of
Southwest Idaho
(COMPASS)**

DATE

Introduction

The Community Planning Association of Southwest Idaho (COMPASS) is an association of local governments that serves as the metropolitan planning organization (MPO) for Ada and Canyon Counties, Idaho. One of the primary functions of an MPO is to develop a long-range transportation plan for its planning area.

The regional long-range transportation plan developed by COMPASS for Ada and Canyon Counties is *Communities in Motion* (CIM). This plan was originally adopted by the COMPASS Board of Directors in 2006; updated versions were adopted in 2010 and 2014. Per federal requirements, the plan must be updated again by fall 2018. This update is scoped to be a “minor” update of the CIM 2040 plan, meaning many of the basic tenets of that plan, such as the CIM 2040 Vision and the plan goals, objectives, and implementation policies, will remain essentially the same, with refinements to reflect changing conditions.

Meaningful public involvement is a key component of any planning process. As CIM will help shape a sustainable future for the area, public involvement and investment in the process and its outcomes is crucial. It is the goal of this plan to ensure all residents of Ada and Canyon Counties, including traditionally underrepresented populations, have the opportunity to be active participants in the planning process.

COMPASS engaged in a robust public involvement process for CIM 2040. As many of the policy decisions from CIM 2040 will carry forward, public participation on this next update will focus on those areas that are new or substantially different from CIM 2040.

COMPASS Public Involvement Policy

COMPASS has an overarching Public Involvement Policy¹ that serves as an umbrella for all public involvement within the agency. The policy is updated every three years and adopted by the COMPASS Board². In part, the policy states:

The planning processes of the Community Planning Association of Southwest Idaho (COMPASS) shall include an active public involvement process that provides comprehensive information, timely public notice, full public access to key decisions, and supports early and continuing involvement of the public in developing plans.

COMPASS is committed to broad goals for public involvement in all its programs, including:

- Developing an open planning process that provides citizens with meaningful opportunities to participate in the development and decision-making processes.
- Communicating complete, accurate, understandable, and timely information to the public.
- Seeking representation from a broad cross-section of residents of the Treasure Valley.
- Specifically reaching out to traditionally underrepresented populations.
- Offering a range of educational and public involvement opportunities.
- Providing public input to planners and decision-makers in a timely manner.
- Providing opportunities for early and continuous involvement.
- Complying with requirements of Title VI Civil Rights Act of 1964 and ensuring all citizens have the opportunity to participate.
- Building upon previous COMPASS public involvement and stakeholder outreach efforts.

¹ http://www.compassidaho.org/documents/comm/Final_Public_Involvement_Policy_Oct_2012.pdf

² This policy will be updated in 2015; at that time, it will be integrated into an agency-wide integrated communication plan, as will all future project-specific public involvement plans. Visit www.compassidaho.org/people/publicinvolvement.htm to access current public involvement policies and plans.

Public Involvement Goals for CIM 2040 2.0

COMPASS will engage the public and targeted stakeholders, including traditionally underrepresented populations, throughout the development of CIM 2040 2.0. COMPASS has two primary public involvement goals for CIM 2040 2.0:

1. **Educate and inform the public of the existence of COMPASS and CIM, CIM's impact on Treasure Valley residents, primary issues address in the plan, and the right and responsibility of residents to be aware and involved in plan development and implementation.**
 - a. Raise awareness that COMPASS and a regional long-range transportation plan exist, and how and why a plan is developed.
 - b. Educate the public on who is involved in the planning process, how the plan is used, and how the plan affects the Treasure Valley and its residents now and in the future.
 - c. Educate the public on the primary issues addressed in the plan and how those issues can and will affect the future of the Treasure Valley and its residents.
 - d. Generate awareness that all Treasure Valley residents have a right and responsibility to be involved in the planning process and educate residents on how to become involved.

2. **Continuously engage the public as active participants in planning and decision-making processes by gathering public input during plan development and on the draft plan and ensuring public input is considered throughout the planning process.**
 - a. Engage stakeholders and the general public, including traditionally underrepresented populations, as active contributors in the decision-making process.
 - b. Provide multiple and differing opportunities for the public to provide input into the plan.
 - c. Ensure the COMPASS Board, advisory committees, and COMPASS staff receive the input provided and respond as appropriate.
 - d. Ensure traditionally underrepresented populations have the opportunity to be involved and express their needs and priorities in a manner that best serves individual populations and that input is considered in planning and decision-making.

Outreach Strategies

The following outlines public involvement strategies for the development of CIM 2040 2.0, based on the goals and objectives listed on the previous page. It is organized into three sections: ongoing public participation (Item 1.2 in the scope of work), public involvement on the future transportation system (Item 7.6 in the scope of work), and public comment on the draft plan (Item 10.2 in the scope of work). As many of the policy decisions will be carried forward from CIM 2040, it is anticipated that public input will focus on Item 7.6 – public involvement on the future transportation system.

Ongoing public participation; Scope of Work, Item 1.2 January 2015 – April 2018

- Develop public involvement plan (approved by COMPASS Board no later than December 2014)
- Update stakeholder outreach matrix³ (ongoing)
 - Identify how to best reach/interact with individual populations and at what stage(s) in the planning process
 - Identify and address barriers to participation, such as language, lack of transportation, child care, etc.
 - Continually update and use the stakeholder outreach matrix as the guide for engaging to stakeholders throughout the process
 - Ensure traditionally underrepresented and other specific stakeholder groups are included in the matrix and in targeted public involvement (low income, minority, individuals with disabilities, Native American tribes, freight interests, environmental interests, limited English speakers, transportation providers, etc.)
- Conduct ongoing outreach to generate awareness, educate, and inform the public and stakeholders regarding the plan and issues addressed in the plan, the planning process, and implications of the plan. Methods to be used include, but are not limited to:
 - Issue news releases as appropriate (minimum 3 per year)⁴
 - Work with media on feature stories and interview opportunities (ongoing)
 - Provide presentations to community groups/seek presentation opportunities (minimum 20)
 - Provide information on COMPASS web site (ongoing)
 - Develop and send quarterly email updates to all stakeholders; post the same information on the COMPASS web site (quarterly; January 1, 2015, through July 1, 2018)
 - Post updates on COMPASS Facebook page (minimum 1 per month)
 - Place informational displays in public venues (e.g., libraries, city halls) (minimum 12 locations)
 - Post on Executive Director blog (minimum 4 per year)
 - Host booths at events (transportation related and/or stakeholder related), as appropriate (minimum 6)

³The matrix includes an extensive list of stakeholder types (e.g., neighborhood associations, the elderly), including traditionally underrepresented populations, as well as approaches for interacting with them during different planning phases.

⁴Minimum numbers refer to items related to CIM between January 1, 2015 and June 30, 2018.

Public Participation in Developing the Future Transportation System; Scope of Work, Item 7.6 January 2016 – June 2016

- Continue ongoing outreach, as noted on page 5, including using the stakeholder outreach matrix to continually ensure all populations are included appropriately.
- Work with consultant/vendor to develop/use an online tool to allow individuals to compare their personal preference/ideals/values against different transportation options to provide feedback to COMPASS to help shape the most desirable future transportation system.
- Conduct open houses (3 minimum) to share information, answer questions, and allow participants the opportunity to receive and share the same information as the online tool, but in person.
- Conduct focus groups with traditionally underrepresented populations to provide the opportunity to receive and share the same information as the online tool, but in person.
- Promote the opportunity to comment and provide input using methods including, but not limited to:
 - Email blasts
 - COMPASS website and social media
 - News releases, interviews, op ed pieces, and other earned media exposure
 - Newspaper advertisements, including Spanish newspapers
 - Radio advertisements, including Spanish radio stations
 - Flyers at public locations, with an emphasis on locations that serve traditionally underrepresent populations
 - Presentations to community groups
 - Booths at community events, as appropriate, with online tool available for people to participate at that time (when possible)
- Ensure feedback is provided to planners and decision-makers, including the COMPASS Board, and that it is considered and responded to, as appropriate.
- Post feedback results/comments on the COMPASS website and send via email to the stakeholder email list summarizing the feedback received and how it will be used.
- Summarize public comments and how they were addressed in the plan document, with a link to full, verbatim comments.

Public Comment on Draft Plan; Scope of Work, Item 10.2
January 2018 – March 2018

- Continue ongoing outreach, as noted on page 5, including using the stakeholder outreach matrix to continually ensure all populations are included appropriately.
- Conduct open houses (3 minimum) to allow participants the opportunity to review materials, ask questions, and provide feedback in person.
- Provide opportunities to comment online, including:
 - Provide the draft plan and all related materials online, including online and printable comment forms.
 - Conduct virtual open houses, similar to the virtual open houses used for CIM 2040, to allow individuals the opportunity to review information, ask questions, and provide feedback as they would in a traditional, in person, open house.
- Conduct focus groups with traditionally underrepresented populations to provide the opportunity to receive and share information and feedback in a small group setting.
- Provide draft plan and at public venues (e.g., libraries) for comment.
- Promote the opportunity to comment and provide input using methods including, but not limited to:
 - Email blasts
 - COMPASS website and social media
 - News releases, interviews, op ed pieces, and other earned media exposure
 - Newspaper advertisements, including Spanish newspapers
 - Radio advertisements, including Spanish radio stations
 - Flyers at public locations, with an emphasis on locations that serve traditionally underrepresent populations
 - Presentations to community groups
 - Booths at community events, as appropriate, with online tool available for people to participate at that time
- Ensure feedback is provided to planners and decision-makers, including the COMPASS Board, and that it is considered and responded to, as appropriate.
- Post feedback results/comments on the COMPASS website and send via email to the stakeholder email list summarizing the feedback received and how it will be used.
- Summarize public comments and how they were addressed in the plan document, with a link to full, verbatim comments.

Project Management

Ms. Liisa Itkonen is the project manager for the CIM 2040 2.0. Ms. Amy Luft is the Communication Coordinator for COMPASS and will coordinate public involvement activities in conjunction with Ms. Itkonen.

The COMPASS Public Participation Committee has provided input in the development of this public involvement plan and will provide input and assistance throughout the process, as will other COMPASS committees, as appropriate.

This public involvement plan was approved by the COMPASS Board of Directors on XXX.

Attachment.

Scope of Work to Prepare *Communities in Motion 2040 2.0*

Scope of Work for *Communities in Motion* Update

The following is the scope of work for the next update of the regional long-range transportation plan, *Communities in Motion*, as approved by the COMPASS Board of Directors on October 20, 2014. This scope of work builds on *Communities in Motion 2040* (CIM 2040) and its main tenets, and maintains 2040 as the horizon year. Per federal requirement, the next plan update is due for COMPASS Board's adoption in 2018.

Assumptions

- The scope of work outlines the main themes and steps of the plan development.
- This scope identifies items that are federally required for a long-range transportation plan/planning process based on proposed MAP-21 planning rules (FR), steps necessary to complete/implement them (fr), and items based on the feedback from the federal certification review of the COMPASS programs (CR).
- This scope of work includes an attached schedule.
- The sequence of the tasks may vary from this scope of work; some of the tasks will be done concurrently (see attached schedule). The schedule also includes three project management tasks not part of this scope.
- COMPASS will prepare the plan – with consultant assistance, as appropriate - but it is assumed that member and other partner agencies will review and provide assistance as appropriate

Building the Foundation

1. Public participation

- 1.1 Develop a public participation plan and outreach strategy (FR)
- 1.2 Implement public participation plan (FR)

Deliverables:

- Public participation plan

2. Refine and confirm the vision and goals

- 2.1 Update population and employment forecast to a new base year of 2015 (FR)
- 2.2 Reconcile growth allocations by TAZs, demographic areas, and city areas of impact (fr)
- 2.3 Based on 2.2., evaluate and confirm the CIM goals with the CIM 2040 Vision (fr)

Deliverables:

- Reconciled CIM 2040 Vision and goals

3. Financial analysis

- 3.1 Update financial analysis and revenue/expenditure forecast to a new base year of 2015 (FR)
- 3.2 Work with member agencies to compile financial data (fr)
- 3.3 Compile maintenance data (FR)
 - o Track funding short fall
- 3.4 Research additional funding mechanisms (FR)
- 3.5 Develop a funding plan

Deliverables:

- Financial forecast
- Funding plan

Where We Are Today

4. Existing Conditions (Data and Plans)

- 4.1 Summarize baseline data - performance monitoring report (FR) and dashboard

- 4.2 Compile latest available estimates, assumptions and performance targets (FR):
 - o Land use (FR)/comprehensive plans
 - o Transportation system and plans (FR)
 - o Environment and natural resources (FR)
 - o Safety and security plans (FR)
 - o Economic activity (FR)
 - o Air quality plan (FR)

Deliverables:

- Summary of where we are today (existing conditions)
- Summary of changes to plans since the original CIM 2040 Vision, with identification of resulting gaps or discrepancies

5. Performance Analysis (Data and Plans)

- 5.1 Analyze performance trends in relation to CIM 2040 Vision and the goals (FR)
- 5.2 Develop performance analysis and feedback tool (fr)

Deliverables:

- Performance analysis tool/methodology
- Performance Monitoring Report in 2016 and 2018
- Summary of performance analysis with identification of trends and issues

What We Need the Future Transportation System to Be

6. Options/Transportation System Scenarios

- 6.1 Consider results and trends of the congestion management process/congestion reduction measures (annual Congestion Management Process report) (FR)
- 6.2 Determine current and projected transportation demand of persons and goods (FR)
- 6.3 Evaluate transit system performance based on projected roadway congestion, connectivity to planned high capacity/fixed guideway corridors, and linkages through key transfer points. Develop and refine transit scenarios based on system assessment. (fr)
- 6.4 Develop transportation system scenarios to describe/depict future transportation system options based on performance trends and CIM vision/goals (fr)
 - o Include all transportation modes individually and collectively (auto, transit, bike, pedestrian) (FR, CR)
 - o Integrate region-wide bicycle/pedestrian/pathway network plan (FR, CR)(developed in UPWP program 605)
 - o Describe needed/proposed transportation investments (FR)
- 6.5 Analyze benefits and costs of transportation scenarios (FR)
- 6.6 Assess capital investments and other strategies to preserve existing and projected future transportation infrastructure and provide for multimodal capacity increases (FR)
- 6.7 Analyze the consequences of significant unfunded long-term needs (CR)
 - o Assess impacts on a variety of travel modes (cr)
 - o Assess potential impacts on employers (e.g., change in travel time to employment centers), as well as low-income, people with disabilities, and other vulnerable populations (cr)
- 6.8 Conduct public involvement process (FR)
- 6.9 Refine future transportation system and its preferred elements based on feedback (fr)

Deliverables:

- Transportation scenario report

7. Priorities

- 7.1 Develop criteria for prioritizing future transportation system needs (fr, CR)
- 7.2 Prioritize needed transportation investments (CR)

7.3 Compile funded projects and unfunded needs based on available funding (FR)

Deliverables:

- Summary of prioritization criteria and process (CR)
- Description and map of the preferred transportation scenario
- Description and map of future transportation system priorities

Regional Plan for the Future Transportation System

8. Additional Data and Studies

- 8.1 Update functional classification map, as needed
- 8.2 Identify freight considerations (FR, CR)
 - Consider economic impacts
- 8.3 Conduct farm freight study (fr)
- 8.4 Identify operational and management strategies to improve transportation (FR)
- 8.5 Identify environmental mitigation strategies for areas affected by transportation facilities in the plan (FR)
 - Conduct environmental suitability analysis (fr)
 - Evaluate potential long-term forecasted air quality impacts and identify potential mitigation/adaptation strategies (CR)
- 8.6 Make an air quality conformity determination for the planned transportation system (FR)
- 8.7 Evaluate timing of regional high capacity transit corridor study
- 8.8 Develop scope of work for regional high capacity transit corridor study (currently programmed for FY18)

Deliverables:

- Farm freight study report
- Region-wide bicycle/pedestrian/pathway network plan
- Air quality conformity determination

9. Compile the Plan

- 9.1 Draft plan chapters and supporting documents (fr)
 - Work with technical writer
 - Work with graphic artist
- 9.2 Continue public involvement process; public/agency review of draft plan (FR)

Deliverables:

- A draft of a regional long-range transportation plan for review

10. Plan Adoption

- 10.1 Adopt plan (COMPASS Board, individual member agencies, other partners) (FR)
- 10.2 Publish and distribute plan (FR)

Deliverables:

- A final regional long-range transportation plan that meets all federal requirements



COMPASS BOARD AGENDA ITEM VI-C

Date: December 15, 2014

Topic: Update on COMPASS Education Campaign on Transportation Funding

Request/Recommendation:

Information only.

Background/Summary:

Communities in Motion 2040 (CIM 2040) identifies a funding shortfall for Ada and Canyon Counties of \$159 million per year between now and 2040 to fulfill maintenance needs and expand the transportation system to accommodate growth. CIM 2040 includes nine policy statements to guide implementation, including “cultivate new funding sources for transportation investments.”

As COMPASS developed FY2015 Unified Planning Work Program and Budget with input from the Regional Technical Advisory Committee (RTAC) in late 2013, RTAC identified a program to educate the public on transportation needs, the funding shortfall, and funding options as a first step and top priority to cultivate new funding sources to implement CIM 2040.

To that end, in October 2014 COMPASS kicked off a year-long campaign (“Don’t let the Treasure Valley fall through the cracks”) to increase public awareness and understanding of transportation funding needs and issues to provide the public with the background they need to make informed decisions on transportation funding issues.

COMPASS is focusing educational efforts on three primary topics:

- What are Ada and Canyon transportation needs, why do we have a funding shortfall, and how much is it?
- How transportation funding works (including more background on why we have a shortfall).
- What options are available to augment transportation funding and what they would mean to a local resident.

Campaign elements include:

- A new web page on the COMPASS website focused on funding issues: <http://www.compassidaho.org/comm/transfund.htm>
- Weekly “Did You Know?” transportation funding “factoids” on the COMPASS Facebook page: <https://www.facebook.com/COMPASSIdaho>
- A blog series on the Executive Director’s blog: <http://www.compassidaho.blogspot.com/>
- Op Ed pieces from the COMPASS Board officers
- A series of radio spots that will run January – March on nine local radio stations
- The annual COMPASS education series (January – May 2015), which will focus on funding issues.

These elements are being implemented in a coordinated effort, with each building on and augmenting the others.

Implication (policy and/or financial):

This program helps implement CIM 2040 by laying the groundwork for increased transportation funding.

More Information:

1. For detailed information, contact Amy Luft at aluft@compassidaho.org or 475-2229.

AL:nb t:\fy15\600 projects\653 communications\ed campaign on funding\board_mmo_edfundingupdate_dec2014.docx

ITEM VII-A

COMPASS BOARD of DIRECTORS' 2015 DRAFT LEGISLATIVE POSITION STATEMENTS

2015 State Legislative Positions

1. Transportation Revenue

The COMPASS Board of Directors strongly supports increasing and diversifying dedicated revenue for state and local transportation systems, including transit and alternative transportation modes. Idaho's current transportation funding level is inadequate to address the state's needs. The Governor's Task Force on Modernizing Transportation Funding in Idaho reported in 2010 a \$632 million annual shortfall for roadway and bridge needs in the state, including \$281 million annual shortfall to simply meet maintenance needs of the current system. A functional transportation system is critical to accommodate the population growth and economic development of the Treasure Valley and the state of Idaho.

1a. Sales Tax on Automotive Products

The COMPASS Board of Directors supports diversifying dedicated revenue for transportation systems, including diverting state sales tax on automotive-related products into the Highway Distribution Account. COMPASS supports this concept, however, only in the instance that the transition is structured to avoid a negative impact on the general fund. It is estimated that roughly \$25 million of sales tax is collected on automotive product sales. A complete and immediate shift of this amount would have an impact on state programs reliant on the general fund.

2. Local Option Tax Authority

The COMPASS Board of Directors strongly supports general local option sales tax authority legislation. Such a tool will provide local units of government the ability to request necessary supplemental infrastructure revenue for specific projects, as approved by local voters, through a local option sales tax. The Board supports the concept of allowing such funds to be used for roadway and/or transit projects. The Idaho Constitution currently empowers the legislature to grant local option taxing authority to local units of government. The COMPASS Board does not support local option taxes being used as a replacement for personal property taxes.

3. Increased Funding to Local Transportation Entities

The COMPASS Board of Directors supports legislation that provides increased funding and flexibility to local transportation entities to meet the increasing demands on local transportation systems. COMPASS supports increased funding to allow local transportation entities more control, flexibility to plan and complete local system projects to include roadways, bridges, bike and pedestrian pathways, and transit.



COMPASS BOARD AGENDA ITEM VII-B

DATE: December 15, 2014

Topic: Revision 1 of the FY2015 Unified Planning Work Program and Budget (UPWP)

Request/Recommendation:

Staff seeks COMPASS Board adoption of Resolution 06-2015 approving Revision 1 of the FY2015 Unified Work Program and Budget.

Background/Summary:

Federal metropolitan planning rules require that COMPASS produce a Unified Planning Work Program and Budget, which is periodically amended to accommodate changes in revenues, expenses, staffing, and scope. These amendments are usually accomplished through a Board resolution with subsequent distribution of the approved resolution and supporting documents to the appropriate funding agencies.

The Finance Committee reviewed the proposed amendments at its November 20, 2014, meeting and recommended approval of Revision 1 of the FY2015 UPWP as presented.

Revision 1 of the FY2015 UPWP is proposed for the following major reasons:

- 1) To add approximately \$102,000 of additional FY2014 Consolidated Planning Grant (CPG) funds made available from FHWA/FTA during FY2014 but not included in the FY2014 UPWP.
- 2) To carryover approximately \$602,000 in FY2014 CPG funds that were budgeted in FY2014 but not billed.
- 3) To exchange approximately \$148,000 in local funds budgeted to be drawn from fund balance for federal funds to maximize use of the unexpended FY2014 CPG funds.
- 4) To carryover approximately \$205,000 in expenses from FY2014 to FY2015 to wrap up projects budgeted in FY2014 but not completed. These expenditures include implementation grants awarded but not paid (\$97,427), funds for *Communities in Motion* 2040 writing, graphics and printing (\$49,465), and professional services in support of the Regional Travel Demand Model (\$34,000).
- 5) To add approximately \$333,000 in new expenditures to maximize use of available CPG funds. These new expenditures include funds for project scope development for member agencies (\$125,000), investment in and implementation of bike/ped counter equipment (\$119,000), and increase in fringe benefit expense to account for increased flex credit allotment (\$35,778).

All proposed modifications are summarized in the attached summary worksheet.

Implication (policy and/or financial):

Without COMPASS Board adoption of Revision 1 of the FY2015 UPWP, the agency cannot make full use of available financial resources.

More Information:

- 1) Attachments
- 2) For detailed information contact: Megan Larsen, at 475-2228 or mlarsen@compassidaho.org.

KH; ML: NB T:\FY15\Transfer\Megan\December 15 UPWP Board Memo.docx



RESOLUTION NO. 06-2015

FOR THE PURPOSE OF APPROVING REVISION 1 OF THE FY2015 UNIFIED PLANNING WORK PROGRAM AND BUDGET

WHEREAS, the FY2015 Unified Planning Work Program and Budget was adopted by the Community Planning Association of Southwest Idaho Board of Directors under Resolution 11-2014, dated August 18, 2014; and

WHEREAS, the Community Planning Association of Southwest Idaho desires to amend the annual Unified Planning Work Program and Budget as part of timely reviews; and

WHEREAS, the Community Planning Association of Southwest Idaho desires to incorporate funding and program revisions in the Unified Planning Work Program and Budget to recognize federal dollars for both COMPASS and pass-through agreements to other agencies; and

WHEREAS, the attached memorandum and supporting documentation summarizes the adjustments included in Revision 1 of the FY2015 Unified Planning Work Program and Budget and is made a part hereof.

NOW, THEREFORE, BE IT RESOLVED, that the Community Planning Association of Southwest Idaho Board of Directors approves by Resolution Revision 1 of the FY2015 Unified Planning Work Program and Budget;

BE IT FURTHER RESOLVED, that the Chair and Executive Director are authorized to submit all grant and contract revisions and sign all necessary documents for grant and contract purposes.

DATED this 15th day of December, 2014.

APPROVED:

By: _____
Charlie Rountree, Chair
Community Planning Association
of Southwest Idaho Board of Directors

ATTEST:

By: _____
Matthew J. Stoll, Executive Director
Community Planning Association
of Southwest Idaho

T:\FY15\900 Operations\990 Direct Operations Maint\Board\2015 Resolutions\Resolution 06-2015.docx

**COMMUNITY PLANNING ASSOCIATION OF SOUTHWEST IDAHO
 FY2015 UNIFIED PLANNING WORK PROGRAM AND BUDGET - REVISION 1
 REVENUE AND EXPENSE SUMMARY**

	Total
FY15 Original budget, revenues	\$ 3,027,148
Additional dollars made available from FHWA/FTA for CPG	102,652
FY14 CPG Key # 12380, budgeted but not billed in FY14 (Carryover)	602,341
FY14 STP TMA funds released to the TMA Balancing Committee	(17,654)
<i>Decrease fund balance draw for local match, carryover*</i>	(148,526)
FY2015 Budget, Revision 1 Revenues	<u>\$ 3,565,961</u>
FY15 Original budget, expenses	\$ 3,027,148
Carryover:	
CIM 2040 Implementation grants, awarded but not paid	97,427
CIM 2040 Professional Services, technical writing and graphics	35,644
Regional Travel Demand Model, professional services	34,000
CIM 2040 Printing	13,821
VRT Title VI Survey	12,365
Regional Data Center implementation	12,360
Subtotal, Carryover	205,617
Additions	
Project concept/scope development for member agencies	125,000
Bike/Ped counters, multi modal planning support	119,000
Increase fringe benefits to account for increased allotment of flex credits to cover medical benefits	35,778
CIM Proof of Concept/Phase 1 for Cube Land Software	15,000
Tech support for modeling, TJKM	10,000
Bike Safety PSA's	6,860
Coalition for America's Trade Corridors membership	6,500
Contribution to Green Stormwater Infrastructure study; Idaho Rivers United	5,000
Traffic count data collection	5,000
Building Maintenance cost increase	4,758
TIP Brochures	300
Subtotal, Additions	333,196
FY2015 Budget, Revision 1	<u>\$ 3,565,961</u>

*(net FB draw after this adjustment = \$115,545)

**COMMUNITY PLANNING ASSOCIATION OF SOUTHWEST IDAHO
FY2015 UNIFIED PLANNING WORK PROGRAM and Budget - Revision 1
REVENUE AND EXPENSE SUMMARY**

REVENUE	FY2015 Final	FY2015 Revision 1
GENERAL MEMBERSHIP		
Ada County	199,509	199,509
Ada County Highway District	199,509	199,509
Canyon Highway District No. 4	11,964	11,964
Nampa Highway District No. 1	11,964	11,964
City of Boise	95,999	95,999
City of Caldwell	31,375	31,375
Canyon County	131,049	131,049
City of Eagle	10,344	10,344
City of Garden City	4,921	4,921
City of Kuna	7,085	7,085
City of Meridian	37,583	37,583
City of Middleton	4,067	4,067
City of Nampa	56,110	56,110
City of Parma	1,329	1,329
City of Star	3,148	3,148
City of Wilder	1,018	1,018
Subtotal	806,974	806,974
SPECIAL MEMBERSHIP		
Boise State University	8,100	8,100
Capital City Development Corporation	8,100	8,100
Department of Environmental Quality	8,100	8,100
Idaho Transportation Department	8,100	8,100
Valley Regional Transit	8,100	8,100
Subtotal	40,500	40,500
GRANTS AND SPECIAL PROJECTS		
FHWA/FTA - Consolidated Planning Grants		
CPG - FY2014 K# 12380 Ada County - Carry Over		468,944
CPG - FY2014 K# 12380 Canyon County - Carry Over		236,049
CPG - FY2015 K# 12381 Ada County	886,544	886,544
CPG - FY2015 K# 12381 Canyon County	311,489	311,489
Sub Total CPG Grants	1,198,033	1,903,026
STP TMA - K# 12373, off-the-top funds for Planning	306,705	289,051
STP TMA - K# 13048, onboard transit survey	324,310	324,310
Subtotal	631,015	613,361
OTHER REVENUE SOURCES		
Idaho Department of Environmental Quality	18,150	18,150
Ada County Air Quality Board	64,350	64,350
Interest Income	4,056	4,056
Subtotal	86,556	86,556
COMPASS REVENUE	2,763,077	3,450,416
Draw From Fund Balance	264,071	115,545
TOTAL, ALL RESOURCES	3,027,148	3,565,961

EXPENSE	FY2015 Final	FY2015 Revision 1
SALARY, FRINGE & CONTINGENCY		
Salary	1,190,683	1,190,683
Fringe	463,105	498,883
Medical Expense Reimbursement Plan	-	-
Salary Contingency (Overtime and Bonus)	20,000	20,000
Sick Time Trade	10,000	10,000
Interns	12,500	12,500
Subtotal	1,696,288	1,732,066
INDIRECT OPERATIONS & MAINTENANCE		
COMPASS	213,335	218,093
Subtotal	213,335	218,093
DIRECT OPERATIONS & MAINTENANCE		
605, Treasure Valley Bicycle and Pedestrian Data Collection	11,000	130,000
620, Growth and Transportation Monitoring	1,750	1,750
647, Regional Growth Issues and Options	1,500	1,500
653, Communications and Education	91,325	98,185
661, <i>Communities in Motion</i>	68,000	137,465
685, Transportation Improvement Program	3,200	3,500
686, Planning for Project Development		125,000
701, General Membership Services		12,365
702, Air Quality Outreach	75,000	75,000
760, Legislative Services	106,050	112,550
801, Staff Development	28,500	28,500
820, Committee Support	2,000	2,000
836, Regional Travel Demand Model	10,000	59,000
838, Household Travel Survey	350,000	350,000
842, Congestion Management and ITS	109,000	109,000
860, Geographic Information System Maintenance	1,200	1,200
861, Regional Orthophotography		
862, Regional Data Center	40,000	52,360
990, Direct Operations and Maintenance	219,000	316,427
Subtotal	1,117,525	1,615,802
COMPASS EXPENSE	3,027,148	3,565,961

COMPASS REVENUE AND EXPENSE SUMMARY		
TOTAL REVENUE	3,027,148	3,565,961
LESS: TOTAL EXPENSES	3,027,148	3,565,961
CHANGE IN FUND BALANCE	0	0

T:\Operations\Accounting & Reporting\UPWP\FY 2015 rev-1

FY2015 - Revision 1

REVENUE AND EXPENSE SUMMARY

**COMMUNITY PLANNING ASSOCIATION OF SOUTHWEST IDAHO
FY2015 UNIFIED PLANNING WORK PROGRAM and Budget - Revision 1
EXPENSES BY WORK PROGRAM NUMBER AND FUNDING SOURCE**

WORK PROGRAM NUMBER	EXPENSES				FEDERAL FUNDING SOURCES							MATCH, LOCAL & OTHER FUNDING				TOTAL FUNDING SOURCES
	Work Days	Labor & Indirect Cost	Direct Cost	Total Cost	FY14 CPG Ada County K# 12380	FY14 CPG Canyon County K# 12380	FY15 CPG Ada County K# 12381	FY15 CPG Canyon County K# 12381	STP-TMA K# 12373; off the Top	STP-TMA K# 13048; On Board Transit	Total Federal Funds	Required Match	Local Funds	Other Revenue	Total Local & Other	
601 UPWP/Budget Development & Fed assurances	203	122,306.79	-	122,306.79	12,046.86	6,068.72	53,361.09	18,748.49	19,873.30		110,098.47	12,208.32			12,208.32	122,307
605 Multi Modal Service Analysis	305	162,591.20	130,000.00	292,591.20	1,961.45	988.10	198,442.44	69,723.02			271,115.01	21,476.19			21,476.19	292,591
620 Maintain Multimodal Service Database	169	83,354.31	1,750.00	85,104.31	499.25	251.50	57,799.10	20,307.79			78,857.65	6,246.66			6,246.66	85,104
647 Regional Growth Issues and Options	144	70,050.30	1,500.00	71,550.30	562.78	283.51	48,434.64	17,017.58			66,298.51	5,251.79			5,251.79	71,550
653 Communications and Education	270	136,319.99	98,185.00	234,504.99							-		227,644.99	6,860.00	234,504.99	234,505
661 Communities in Motion	540	307,033.33	137,465.00	444,498.33	72,754.37	28,963.47	175,193.43	58,284.74	76,676.15		411,872.15	32,626.18			32,626.18	444,498
685 Transportation Improvement Program	502	272,687.57	3,500.00	276,187.57	58,747.25	29,594.48	67,264.17	23,633.36	76,676.15		255,915.40	20,272.17			20,272.17	276,188
686 Project/Scope Development	93	53,999.67	125,000.00	178,999.67	33,274.00	16,762.09			115,825.00		165,861.09	13,138.58			13,138.58	179,000
692 Regional Asset and Resource Maintenance Report	9	5,034.15	-	5,034.15	47.38	23.87	3,399.11	1,194.28			4,664.64	369.51			369.51	5,034
693 Grant Research & Assistance	20	12,066.93	-	12,066.93							-		12,066.93		12,066.93	12,067
TOTAL PROJECTS	2,255	1,225,444	497,400	1,722,844	179,893	82,936	603,894	208,909	289,051	-	1,364,683	111,589	239,712	6,860	358,161	1,722,844
701 General Membership Services	116	61,164.19	12,365.00	73,529.19	45,307.88	22,824.27					68,132.15	5,397.04			5,397.04	73,529
702 Air Quality Outreach	12	7,500.00	75,000.00	82,500.00							-		82,500.00		82,500.00	82,500
703 General Public Services	33	16,843.40	-	16,843.40							-		16,843.40		16,843.40	16,843
705 Transportation Liaison Services	70	47,954.31	-	47,954.31	29,548.92	14,885.55					44,434.46	3,519.85			3,519.85	47,954
720 State Street Corridor Implementation	5	3,053.09	-	3,053.09	46.22		2,782.77				2,828.99	224.10			224.10	3,053
760 Legislative Services	76	59,783.79	112,550.00	172,333.79							-		165,833.79	6,500.00	172,333.79	172,334
761 Blueprint for Good Growth	10	6,987.70	-	6,987.70	84.01		6,390.80				6,474.80	512.90			512.90	6,988
TOTAL SERVICES	322	203,286	199,915	403,201	74,987	37,710	9,174	-	-	-	121,870	9,654	182,677	89,000	281,331	403,201
801 Staff Development	100	54,977.57	28,500.00	83,477.57	51,437.96	25,912.36					77,350.32	6,127.25			6,127.25	83,478
820 Committee Support	165	94,701.13	2,000.00	96,701.13	59,586.17	30,017.09					89,603.26	7,097.86			7,097.86	96,701
836 Regional Travel Demand Model	229	115,648.00	59,000.00	174,648.00	38,733.81	19,512.52	76,651.06	26,931.45			161,828.84	12,819.16			12,819.16	174,648
838 On-Board Transit and Household Travel Survey	27	15,793.84	350,000.00	365,793.84	155.77	78.47	10,656.25	3,744.09		324,310.00	338,944.57	26,849.27			26,849.27	365,794
842 Congestion Management Process	119	52,966.77	109,000.00	161,966.77	472.52	238.04	110,532.21	38,835.64			150,078.41	11,888.36			11,888.36	161,967
860 Geographic Information System Maintenance	322	135,766.38	1,200.00	136,966.38	39,429.92	27,616.01	44,301.68	15,565.45	-		126,913.05	10,053.33			10,053.33	136,966
862 Regional Data Center	94	51,574.22	52,360.00	103,934.22	24,247.53	12,028.98	31,335.67	17,502.69			85,114.87	6,742.32	12,077.04		18,819.36	103,934
TOTAL SYSTEM MAINTENANCE	1,056	521,428	602,060	1,123,488	214,064	115,403	273,477	102,579	-	324,310	1,029,833	81,578	12,077	-	93,655	1,123,488
990 Direct Operations/Maintenance	-	-	316,427.00	316,427.00							-		210,186.00	106,241.00	316,427.00	316,427
991 Support Services Labor	1,490	-	-	-							-				-	-
999 Indirect Operations/Maintenance	-	-	-	-							-				-	-
TOTAL INDIRECT/OVERHEAD	1,490	-	316,427	316,427	-	-	-	-	-	-	-	-	210,186	106,241	316,427	316,427
GRAND TOTAL	5,123	1,950,159	1,615,802	3,565,961	468,944	236,049	886,544.42	311,489	289,051	324,310	2,516,387	202,821	644,652	202,101	1,049,575	3,565,961

T:\Operations\Accounting & Reporting\UPWP\FY 2015 rev-1
FY2015 - Revision 1

FUNDING SOURCE

**COMMUNITY PLANNING ASSOCIATION OF SOUTHWEST IDAHO
FY2015 UNIFIED PLANNING WORK PROGRAM and Budget - Revision 1
DIRECT EXPENSE SUMMARY**

DESCRIPTION	TOTAL DIRECT	PROFESSIONAL SERVICES (830)	EQUIPMENT / SOFTWARE (834)	TRAVEL / EVENTS / EDUCATION (840)	PRINTING (860)	OTHER (863)	PUBLIC INVOLVEMENT (864)	MEETING SUPPORT (865)	LEGAL / LOBBYING (872)	FY2016 CARRY- FORWARD
605 Multi Modal Service Analysis	-									
Treasure Valley Bicycle and Pedestrian Data Collection	130,000		130,000							
620 Growth and Transportation System Monitoring	1,750		1,000	500			250			
647 Regional Growth Issues and Options	1,500	1,500								
653 Communications and Education	98,185	61,360				1,000	34,400	1,425		
661 Communities in Motion	137,465	105,644			23,821	-	8,000			
685 Transportation Improvement Program	3,500						3,500			
686 Project/Scope Development	125,000	125,000								
701 General Membership Services	12,365	12,365								
702 Air Quality Outreach	75,000	75,000								
760 Legislative Services	112,550			9,000		17,600			85,950	
801 Staff Development	28,500			28,500						
820 Committee Support	2,000							2,000		
836 Regional Travel Demand Model	59,000	59,000								
838 On-Board Transit and Household Travel Survey	350,000	350,000								
842 Congestion Management Process	109,000	15,000	94,000							
860 Geographic Information System Maintenance	1,200					1,200				
862 Regional Data Center	52,360	52,360								
990 Direct Operations/Maintenance	47,500	1,000	36,500	8,000				2,000		
900 - Grant Implementation Program	147,427					147,427				
990 - Ortho Project	61,500									61,500
990 - TREDIS Renewal (3 yrs)	60,000		60,000							
GRAND TOTAL	1,615,802	858,229	321,500	46,000	23,821	167,227	46,150	5,425	85,950	61,500

T:\Operations\Accounting & Reporting\UPWP\FY 2015 rev-1

**COMMUNITY PLANNING ASSOCIATION OF SOUTHWEST IDAHO
 FY2015 UNIFIED PLANNING WORK PROGRAM and Budget - Revision 1
 INDIRECT OPERATIONS AND MAINTENANCE EXPENSE SUMMARY**

CATEGORY	ACCOUNT CODE	FY2015 Final	FY2015 Revision 1
Professional Services	930	30,000	30,000
Equipment Repair / Maintenance	936	2,000	2,000
Travel / Education	940	2,500	2,500
Publications	943	1,500	1,500
COMPASS Membership	944	12,000	12,000
Employee Professional Membership	945	9,500	9,500
Postage	950	1,500	1,500
Telephone	951	13,100	13,100
Building Maintenance and Reserve for Major Repairs	955	36,535	41,293
Printing	960	2,000	2,000
Advertising	962	5,000	5,000
Audit	970	16,000	16,000
Insurance	971	13,000	13,000
Legal Services	972	10,000	10,000
General Supplies	980	4,500	4,500
Computer Supplies	982	10,500	10,500
Computer Software / Maintenance	983	24,200	24,200
Commuting Incentive	990	500	500
Vehicle Maintenance	991	3,000	3,000
Utilities	992	12,000	12,000
Local Travel	993	2,500	2,500
Other / Miscellaneous	995	1,500	1,500
TOTAL		213,335	218,093

T:\Operations\Accounting & Reporting\UPWP\FY 2015 rev-1

**COMMUNITY PLANNING ASSOCIATION OF SOUTHWEST IDAHO
FY2015 UNIFIED PLANNING WORK PROGRAM and Budget - Revision 1
WORKDAY ALLOCATION**

WORK PROGRAM DESCRIPTION	LEAD STAFF	DIRECTORS	PRINCIPAL PLANNERS	ASSOCIATE PLANNERS	ASSISTANT PLANNERS	INTERNS	OPERATIONS	TOTAL
601 UPWP/Budget Development & Fed assurances	ML	47	44	3	-	-	109	203
605 Multi Modal Service Analysis	SA	23	136	64	74	8	-	305
<i>Maintain Multimodal Service Database</i>								
<i>LMMN Plan Development for MPO Area</i>								
<i>Multi Modal Service Analysis</i>								
<i>Treasure Valley Bicycle and Pedestrian Data Collection</i>								
<i>Regional Pathways Plan</i>								
<i>Complete Streets LOS</i>								
620 Growth and Transportation System Monitoring	CM	10	64	-	95	-	-	169
<i>RTAC#2 - Development of Additional Performance Measures</i>								
647 Regional Growth Issues and Options	CM	2	59	9	74	-	-	144
<i>Ada County#5: Area of City Impact Comprehensive Plan Analysis</i>								
<i>Ada County#6: Full build-Out Scenario Plan</i>								
653 Communications and Education	AL	9	125	6	127		3	270
<i>RTAC#1 - Transportation Funding Education Plan</i>								
661 Communities in Motion	LI	37	311	80	76	-	36	540
<i>RTAC#3 - Share Best Practices</i>								
685 Transportation Improvement Program	TT	32	289	2	178		1	502
686 Project/Scope Development	DM	16	46	6	24		1	93
692 Regional Asset and Resource Maintenance Report	DM	1	5	-	3		-	9
693 Grant Research & Assistance	DM	4	10	2	3		1	20
TOTAL PROJECTS		181	1,089	172	654	8	151	2,255
701 General Membership Services	SA	4	65	2	45	-	-	116
<i>ACHD Support</i>	MW							
Ongoing Member Support	CM							
<i>Members - Development Review</i>	MW							
<i>Members - Traffic Impact Studies</i>	MW							
<i>Members - Area of Influence Analysis</i>	MW							
702 Air Quality Outreach	AL	-	12	-	-		-	12
703 General Public Services	AL	3	12	2	16		-	33
705 Transportation Liaison Services	MS	26	40	2	2		-	70
720 State Street Corridor Implementation	DM	1	3	-	1		-	5
760 Legislative Services	MS	66	3	-	4		3	76
761 Blueprint for Good Growth	MS	6	1	-	1		2	10
TOTAL SERVICES		106	136	6	69	-	5	322
801 Staff Development	ML	12	42	6	30		10	100
820 Committee Support	ML	35	12	-	8		110	165
836 Regional Travel Demand Model	MW	2	120	-	107		-	229
838 On-Board Transit and Household Travel Survey	MW	6	10	5	6		-	27
842 Congestion Management Process	MW	2	23	32	55	7	-	119
860 Geographic Information System Maintenance	EA	6	98	7	153	58	-	322
862 Regional Data Center	EA	6	57	-	24	3	4	94
TOTAL SYSTEM MAINTENANCE		69	362	50	383	68	124	1,056
TOTAL DIRECT		356	1,587	228	1,106	76	280	3,633
991 Support Services Labor	ML	424	295	32	194	45	500	1,490
TOTAL INDIRECT/OVERHEAD		424	295	32	194	45	500	1,490
TOTAL LABOR		780	1,882	260	1,300	121	780	5,123

T:\Operations\Accounting & Reporting\UPWP\FY 2015 rev-1

COMPASS BOARD AGENDA ITEM VII-C

Date: December 15, 2014

Topic: Revised Development Review Protocol

Request/Recommendation:

Staff seeks Board approval of the revised COMPASS Development Review Protocol and checklist.

Background/Summary:

With the adoption of *Communities in Motion 2040* (CIM 2040), several items have been updated:

- Inclusion of CIM 2040 elements such as economic development, housing, and community infrastructure.
- Development review thresholds adjusted to 2,500 average daily trips (ADT) to match Ada County Highway District standards.
- Use of a development checklist to increase effectiveness and efficiency of reviews.

The original Development Review Protocol was adopted by the Board in 2009 to standardize when and how COMPASS staff conducts technical development reviews as a service to member agencies. COMPASS' role in development review is limited to providing member agencies with technical evaluations of proposed projects or plans, and determining whether the proposal is consistent with the growth forecasted in the CIM 2040 Vision. COMPASS staff is not tasked with recommending if a project should or should not be approved.

COMPASS tracks development (housing and jobs) cumulatively by transportation analysis zone (TAZ). COMPASS reports the existing demographics, existing plus the proposed development, then a comparative look against planned CIM 2040 demographics. Furthermore, the checklist (attached) provides basic quantitative assessments of the proposed development against CIM 2040 performance goals in elements such as farmland, open space, job/housing balance, and health. COMPASS staff reviewed the revised protocol with the Public Participation Committee on May 12, 2014, and hosted a Planning and Zoning Commissioners focus group on July 16, 2014. The COMPASS Demographic Advisory Committee recommended Board approval October 22, 2014.

Implication (policy and/or financial):

The Development Review Protocol is an important tool in aiding member agencies in the implementation of CIM.

More Information:

Attachments: COMPASS Development Review Protocol
Communities in Motion 2040 Development Review Checklist

For additional information contact: Carl Miller, Principal Planner, at 475-2239 or at cmiller@compassidaho.org.

COMPASS Development Review Protocol

1. The purpose of the Development Review Protocol is to standardize when and how COMPASS staff conduct technical development reviews as a service for member agencies.
2. COMPASS will conduct three types of development reviews.
 - a. Type I: Influential Developments.
 - i. Developments that will generate more than:
 - 100 residential units,
 - 35,000 square feet of retail space,
 - 50,000 square feet of office space,
 - 70,000 square feet of industrial space, or
 - any combination of the previous thresholds.
 - ii. Developments smaller than the thresholds established above but increasing direct, vehicular access demand on an arterial or expressway.
 - iii. Applies to land development applications such as conditional use permits and rezones where specific quantities of households and/or square footage are proposed or can be calculated.
 - iv. The COMPASS review will comprise a completed *Communities in Motion 2040* Land Development Checklist.
 - b. Type II: Comprehensive plan changes and other proposals with policies related to *Communities in Motion* goals or objectives.
 - i. Applies to comprehensive plan changes, zoning ordinance amendments, and other land use and zoning proposals with policies directly related to *Communities in Motion* goals or objectives.
 - ii. The COMPASS review will comprise a letter to indicate which *Communities in Motion* goals the revisions support or conflict and a completed *Communities in Motion 2040* Policy Checklist.
 - c. Type III: Area of City Impact Amendment requests.
 - i. Applies to Area of City Impact amendments.
 - ii. The COMPASS review will comprise:
 1. Buildout demographics (population, households, and jobs by type),
 2. Travel demand model results and impacts such as volume per roadways, speed and congestion, travel time to/from major destinations,
 3. Related transportation impacts such as complete streets level of service and economic impacts on employment and growth.

3. COMPASS will not review preliminary or final plat applications, variances, height exceptions, landscape plans, etc. or applications that do not require land entitlement public hearings.
4. Developments not meeting the thresholds established in item #2 will be reviewed upon written request.
 - a. A COMPASS Board member may request a development review for any location (inside or outside of the jurisdiction of the requesting agency).
 - b. A Demographic Advisory Committee (DAC) member may request a development review for proposals within their jurisdiction.
 - c. A note in the review letter will indicate the requesting agency).
5. Development review requests from member agencies shall be accompanied by a transmittal letter via hard copy or email that includes the name, size, type, and location of the development, relevant information to assist in the review (such as a site plan and/or a copy of the development application), the requested response date, and the scheduled date of public hearing.
6. COMPASS staff will coordinate with other transportation agencies including relevant highway districts, state transportation departments, and Valley Regional Transit.
7. COMPASS staff will review and evaluate consistency with *Communities in Motion* and include the following information as appropriate:
 - a. A copy of the Area of Influence analysis, if applicable,
 - b. Functional classification of affected roadways,
 - c. Projected growth within the official *Communities in Motion* growth scenarios for the subject Traffic Analysis Zone (TAZ) and adjacent TAZs,
 - d. Location and proximity of the development to corridors listed in the current long-range transportation plan for improvement - funded, illustrative, or preservation,
 - e. Location and proximity of approved Transportation Improvement Program (TIP) projects near the subject property,
 - f. Access management and access location,
 - g. Complete Streets Level of Service scoring for automobile (inside Canyon County), bicycle, pedestrian, and transit modes,
 - h. The Valley Regional Transit *Bus Stop Location and Transit Amenities Development Guidelines*,
 - i. Issues that affect *Communities in Motion 2040* performance measures, including land use, housing, health, economic development, community infrastructure, open space, and farmland.
8. COMPASS will copy development review letters to affected agencies such as highway districts, cities, counties, and Idaho Transportation Department as appropriate.
9. COMPASS staff will complete the development review and transmit correspondence within fourteen (14) business days after receipt of a development review request. This deadline may be adjusted per agreement

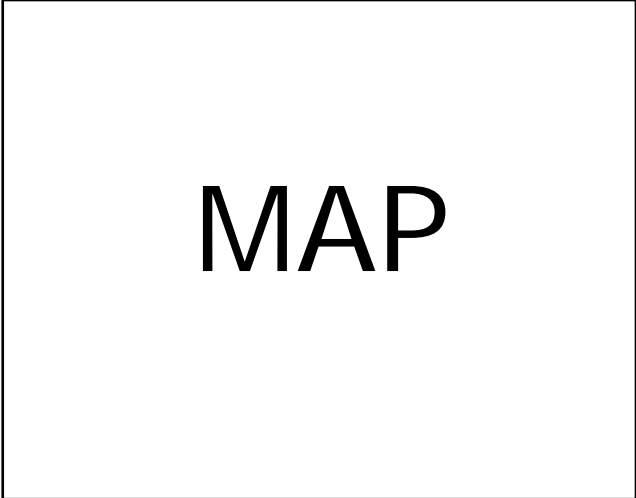
of the requesting member agency and COMPASS staff. Development review letters will be transmitted both electronically and via a letter. If a public hearing is scheduled to take place before the deadline, COMPASS will notify the requesting agency of the conflict.

10. COMPASS staff will be available for verbal testimony at public hearings upon request of the hearing body and contingent upon five (5) business days notice for each application type. COMPASS staff will accommodate late requests whenever possible.
11. The COMPASS Demographic Advisory Committee will annually review the list of development reviews.

T:\FY14\700 Services\701 General Membership Services\Development Review\CIM Development Review Protocol\Development Review Protocol Revised.docx

Communities in Motion 2040 Development Checklist

The Community Planning Association of Southwest Idaho (COMPASS) is the metropolitan planning organization (MPO) for Ada and Canyon Counties. COMPASS has developed this checklist as a tool for local governments to evaluate whether land developments are consistent with the goals of *Communities in Motion 2040* (CIM 2040), the regional long-range transportation plan for Ada and Canyon Counties. CIM 2040 was developed through a collaborative approach with COMPASS member agencies and adopted by the COMPASS Board on **July 21, 2014**.



This checklist is not intended to be prescriptive, but rather a guidance document based on CIM 2040 goals, objectives, and performance measures. A checklist user guide is available [here](#); and more information about the CIM 2040 goals can be found [here](#); and information on the CIM 2040 Vision can be found [here](#).

Name of Development: _____

Summary: _____

Land Use

In which of the [CIM 2040 Vision Areas](#) is the proposed development? (**Goal 2.1**)?

- Downtown Employment Center Existing Neighborhood Foothills
 Future Neighborhood Mixed Use Prime Farmland Rural
 Small Town Transit Oriented Development

Yes No N/A The proposal is within a CIM 2040 Major Activity Center. (**Goal 2.3**)

Neighborhood (Transportation Analysis Zone) Demographics

Existing		Existing + Proposed		2040 Forecast	
Households	Jobs	Households	Jobs	Households	Jobs

Yes No N/A The number of jobs and/or households in this development is consistent with jobs/households in the CIM 2040 Vision in this neighborhood. (**Goal 2.1**)

Area (Adjacent Transportation Analysis Zone) Demographics

Existing		Existing + Proposed		2040 Forecast	
Households	Jobs	Households	Jobs	Households	Jobs

Yes No N/A The number of jobs and/or households in this development is consistent with jobs/households in the CIM 2040 Vision in this area. (**Goal 2.1**)



More information on COMPASS and *Communities in Motion 2040* can be found at:

www.compassidaho.org

Email: info@compassidaho.org

Telephone: (208) 475-2239



Communities in Motion 2040 Development Checklist

Transportation

- Attached N/A An Area of Influence Travel Demand Model Run is attached.
- Yes No N/A There are relevant projects in the current Regional [Transportation Improvement Projects](#) (TIP) within one mile of the development.

Comments: _____

- Yes No N/A The proposal uses appropriate access management techniques as described in the [COMPASS Access Management Toolkit](#).

Comments: _____

- Yes No N/A This proposal supports Valley Regional Transit's [Bus Stop Location and Transit Amenities Development Guidelines](#).

Comments: _____

The **Complete Streets Level of Service (LOS) scoring** based on the proposed development will be provided on an separate worksheet (**Goals [1.1](#), [1.2](#), [1.3](#), [1.4](#), [2.4](#)**):

- Attached N/A Complete Streets LOS scorecard is attached.
- Yes No N/A The proposal maintains or improves current automobile LOS.
- Yes No N/A The proposal maintains or improves current bicycle LOS.
- Yes No N/A The proposal maintains or improves current pedestrian LOS.
- Yes No N/A The proposal maintains or improves current transit LOS.

- Yes No N/A The proposal is in an area with a [Walkscore](#) over 50.

Housing

- Yes No N/A The proposal adds [compact housing](#) over seven residential units per acre. (**Goal [2.3](#)**)
- Yes No N/A The proposal is a mixed-use development or in a mixed-use area. (**Goal [3.1](#)**)
- Yes No N/A The proposal is in an area with lower transportation costs than the [regional average](#) of 26% of the median household income. (**Goal [3.1](#)**)
- Yes No N/A The proposal improves the jobs-housing balance by providing housing in employment-rich areas. (**Goal [3.1](#)**)

Community Infrastructure

- Yes No N/A The proposal is infill development. (**Goals [4.1](#), [4.2](#)**)
- Yes No N/A The proposal is within or adjacent to city limits. (**Goals [4.1](#), [4.2](#)**)
- Yes No N/A The proposal is within a city area of impact. (**Goals [4.1](#), [4.2](#)**)

Health

- Yes No N/A The proposal is within 1/4 mile of a transit stop. (**Goal [5.1](#)**)
- Yes No N/A The proposal is within 1/4 mile of a public school. (**Goal [5.1](#)**)
- Yes No N/A The proposal is within 1/4 mile of a grocery store. (**Goal [5.1](#)**)
- Yes No N/A The proposal is within 1 mile of a park and ride location. (**Goal [5.1](#)**)

Economic Development

- Yes No N/A The proposal improves the jobs-housing balance by providing employment in housing-rich areas. (**Goal [3.1](#)**)
- Yes No N/A The proposal provides grocery stores or other retail options for neighborhoods within 1/2 mile. (**Goal [6.1](#)**)

Open Space

- Yes No N/A The proposal is within a 1/4 mile of a public park. (**Goal [7.1](#)**)
- Yes No N/A The proposal provides at least 1 acre of parks for every 35 housing units. (**Goal [7.1](#)**)

Farmland

- Yes No N/A The proposal is outside "Prime Farmland" in the CIM 2040 Vision. (**Goals [4.1](#), [8.2](#)**)
- Yes No N/A The proposal is outside prime farmland. (**Goal [8.2](#)**)

NOVEMBER 2014 - STAFF ACTIVITY REPORT

PROGRAM NO.	
601	<p data-bbox="298 201 1414 264">UNIFIED PLANNING WORK PROGRAM DEVELOPMENT AND FEDERAL ASSURANCES</p> <p data-bbox="1273 275 1536 302" style="text-align: right;">MEGAN LARSEN</p> <ul data-bbox="318 310 1536 972" style="list-style-type: none"> • Processed and tracked revenues and expenditures associated with the FY2014 UPWP. • Tracked changes and announcements in the Federal Register and the Daily Digest. • Tracked announcements from funding resources to identify potential grants for COMPASS and member agencies. • Prepared Revision 1 of FY2015 UPWP with re-allocation of staff work days to match program area needs. • Presented Revision 1 of the FY2015 UPWP to the Finance Committee, who recommended Board approval. • Met with Canyon Highway District #4 Commissioners regarding a proposal to modify the general membership dues formula for Canyon County members on November 5, 2014. • Facilitated a meeting of Canyon County general membership regarding the calculation of general membership dues on November 17, 2014. Elected officials from Cities of Nampa, Caldwell, Middleton, and Wilder, Canyon County Board of Commissioners, Canyon Highway District #4, and Nampa Highway District #1 participated. Representatives recommended calculating general membership dues using the same formula used in Ada County.
605	<p data-bbox="298 984 889 1012">MULTI-MODAL PLANNING SUPPORT</p> <p data-bbox="1203 1022 1536 1050" style="text-align: right;">WALT SATTERFIELD</p> <ul data-bbox="318 1058 1536 1787" style="list-style-type: none"> • Participated in weekly GoRide coordination meetings with Valley Regional Transit. • Participated in joint meeting with VRT's Executive Board and Regional Coordination council on November 3, 2014. • Participated in Meridian Transit Service Committee meeting on November 7, 2014. • Reviewed data plan with Valley Regional Transit to coordinate GIS data stewardship and processing. • Coordinated with VRT and Commuteride on park and ride data and mapping needs on November 14, 2014. • Participated in the Community Link working group meeting hosted by Valley Regional Transit on November 24, 2014. • Developed surveys and provided a data plan overview for the Healthcare Transportation Access working group meeting on November 25, 2014. • Continued review of bicycle and pedestrian counter technology; developed scope and timeline for deployment for FY2015. • Met with Puget Sound Regional Council to discuss CycleTracks crowdsourcing data collection. • Hosted Foundation for Ada/Canyon Trails System (FACTS) meeting on November 19, 2014. • Developed scope and timeline on Regional Pedestrian/Bicycle Plan.
620	<p data-bbox="298 1799 1224 1827">GROWTH AND TRANSPORTATION SYSTEM MONITORING</p> <p data-bbox="1305 1837 1536 1864" style="text-align: right;">CARL MILLER</p> <ul data-bbox="318 1873 1536 1997" style="list-style-type: none"> • Continued tracking 2014 building permits for the Development Monitoring Report. • Continued geocoding 2014 employment data. • Continued developing "on hold" performance measures.

PROGRAM NO.	
647	<p data-bbox="300 163 1006 199">REGIONAL GROWTH ISSUES AND OPTIONS</p> <p data-bbox="1312 199 1534 231" style="text-align: right;">CARL MILLER</p> <ul data-bbox="316 235 1502 367" style="list-style-type: none"> • Evaluated Impacts 2050 tool to develop alternative demographic forecasts for the update to CIM 2040. • Met with and provided input to ITD and Parametrix on US 20/26 Corridor Preservation Study Project Update.
653	<p data-bbox="300 373 885 409">COMMUNICATION AND EDUCATION</p> <p data-bbox="1367 409 1534 445" style="text-align: right;">AMY LUFT</p> <ul data-bbox="316 449 1534 1327" style="list-style-type: none"> • Prepared the <i>Keeping Up With COMPASS</i> newsletter. • Updated the COMPASS web site. • Posted two blog entries, 26 Facebook messages, and 104 Tweets. • Tracked and facilitated issues related to COMPASS and transportation in and with news media. Issued two news releases, facilitated three interviews, and responded to multiple media inquiries. • Met with Leadership in Motion awards committee to select award recipients; notified recipients and began arrangements for award presentation and announcements. • Continued transportation funding outreach campaign. • Continued work on COMPASS integrated communication plan. • Continued to promote and collect RSVPs for a bikeway design workshop and lecture by Peter Koonce to be held December 10/11, 2014. The workshop is hosted by Boise State University; COMPASS is a co-sponsor. • Sponsored a "community mobility reception," hosted by Idaho Smart Growth on November 5, 2104. • Continued planning for the 2015 COMPASS education series. • Provided in-house presentation training for new staff. • Arranged for Dan Harbeke, Director of Public Affairs for Union Pacific, to give a presentation to member agency staff on December 10, 2014. • Prepared an audit of past COMPASS social media activities, with recommendations for improvement. • Revised COMPASS communication and document review protocols to match organization chart. • Created standard template for COMPASS presentations.
661	<p data-bbox="300 1333 747 1369">COMMUNITIES IN MOTION</p> <p data-bbox="1274 1369 1534 1404" style="text-align: right;">LIISA ITKONEN</p> <ul data-bbox="316 1409 1502 1749" style="list-style-type: none"> • Presented National Highway System information and process to the Idaho Metropolitan Planning Directors' meeting on November 6, 2014. • Presented CIM 2040 to the Exchange Club of Boise on November 7, 2014. • Continued work on the farm freight study, and reviewed data and maps with stakeholders on November 13, 2014. • Continued to work with editor and graphic artist on final CIM 2040 document to prepare it for printing. • Continued preparations for <i>Communities in Motion</i> update outreach. • Met with Idaho Rivers United on inclusion of Green Stormwater components into update.

PROGRAM NO.	
685	<p>REGIONAL TRANSPORTATION IMPROVEMENT PROGRAM (TIP) TONI TISDALE</p> <ul style="list-style-type: none"> • Met with City of Nampa staff regarding transit applications on November 4, 2014. • Prepared for and hosted the Urban Balancing Committee meeting on November 6, 2014. • Prepared for and hosted the TMA Balancing Committee meeting on November 6, 2014. • Met with ACHD staff regarding State and Collister project on November 21, 2014; schedule and funding concerns. • Prepared for and hosted a meeting of all transit applicants to ensure project coordination on November 21, 2014. • Met with and solicited feedback from ACHD staff regarding STP-TMA program obligation issues and upcoming changes. • Continued development of "Project Obligation Program" methodology and outline. • Continued training staff who are new to working with TIP tasks. • Reviewed updates to the 2025 Functional Classification Map (Federal-Aid Map) from ITD and provided comments.
692	<p>REGIONAL ASSET and RESOURCE MAINTENANCE REPORT DON MATSON</p> <ul style="list-style-type: none"> • No significant activity.
693	<p>GRANT RESEARCH AND ASSISTANCE DON MATSON</p> <ul style="list-style-type: none"> • Monitored grant sources for new grant opportunities and shared with member agencies as appropriate. • Prepared concept for "project development" program for member agencies for FY2015 UPWP Revision 1.
701	<p>GENERAL MEMBERSHIP SERVICES SABRINA ANDERSON</p> <ul style="list-style-type: none"> • Hosted the nation-wide webinar <i>Health Equity and Planning Ethics</i> from the American Planning Association on November 5, 2014. • Hosted the wrap up meeting for the Rider/Non rider survey on November 25, 2014 to discuss survey results and key findings. • Reviewed and prepared comments for Fodor and Associates, LLC, on a report titled, "<i>Review of Beacon Light Road Traffic Issues</i>" for Friends of Beacon Light Road.
702	<p>AIR QUALITY OUTREACH AMY LUFT</p> <ul style="list-style-type: none"> • Provided a status report to the Air Quality Board and Department of Environmental Quality.
703	<p>GENERAL PUBLIC SERVICES AMY LUFT</p> <ul style="list-style-type: none"> • Provided information to the public on demographics, development, funding, and traffic issues. • Completed cohort survival forecast data for the College of Western Idaho.

PROGRAM NO.	
705	<p data-bbox="298 163 935 197">TRANSPORTATION LIAISON SERVICES</p> <p data-bbox="1328 201 1536 235" style="text-align: right;">MATT STOLL</p> <ul data-bbox="321 239 1536 793" style="list-style-type: none"> • Participated in the Caldwell Chamber of Commerce Transportation Committee and the Meridian Transportation Commission. • Participated in the Boise Chamber of Commerce Transportation Committee meeting. • Met with Mayor Porterfield from the City of Notus to discuss potential COMPASS membership on November 10, 2014. • Attended the WTS Legislative Meet and Greet meeting on November 19, 2014. • Hosted the Activate Treasure Valley Quarterly Champion Breakfast. • Met with representatives of COMPASS Board Officers, ITD Board and staff, and Governor's Office staff regarding COMPASS and ITD coordination and relations on November 12, 2014. • Attended ITD Board meeting on November 13, 2014. • Met with ITD District 3 District Engineer to improve coordination between the two agencies on November 19, 2014. • Participated in a ULI Affordable Housing Planning Committee on November 21, 2014.
720	<p data-bbox="298 800 1195 833">STATE STREET TRANSIT CORRIDOR IMPLEMENTATION</p> <p data-bbox="1308 837 1536 871" style="text-align: right;">DON MATSON</p> <ul data-bbox="321 875 1536 909" style="list-style-type: none"> • Reviewed recommendations and comments on the Collister Drive intersection.
760	<p data-bbox="298 909 691 942">LEGISLATIVE SERVICES</p> <p data-bbox="1321 947 1536 980" style="text-align: right;">MATT STOLL</p> <ul data-bbox="321 984 1536 1291" style="list-style-type: none"> • Participated in relevant activities in support of Board legislative position statements. • Tracked and reported significant activity in federal and state transportation-related legislative issues. • Continued reviewing Moving Ahead for Progress in the 21st Century Act (MAP-21) and proposed rule-making to determine implications to COMPASS and its membership. • Met with Lieutenant Governor regarding upcoming legislative session on November 19, 2014.
761	<p data-bbox="298 1299 831 1333">BLUEPRINT FOR GOOD GROWTH</p> <p data-bbox="1185 1337 1536 1371" style="text-align: right;">SABRINA ANDERSON</p> <ul data-bbox="321 1375 691 1409" style="list-style-type: none"> • No significant activity.
801	<p data-bbox="298 1409 656 1442">STAFF DEVELOPMENT</p> <p data-bbox="1266 1446 1536 1480" style="text-align: right;">MEGAN LARSEN</p> <ul data-bbox="321 1484 1536 1934" style="list-style-type: none"> • Attended the webinar <i>Using FAF Data for Freight Planning</i> from Federal Highway Administration on November 5, 2014. • Attended the webinar <i>Breathing New Life into Failed Commercial Corridors</i> from the County Planning Division of the American Planning Association on November 6, 2014. • Attended the webinar <i>Measuring Progress: Performance Metrics as a Tool in Shaping Policy</i> from the Colorado Chapter of the American Planning Association on November 7, 2014. • Attended Social Media Marketing training, November 19-20, 2014. • Attended the ULI 2015 Legislative Outlook, November 20, 2014. • Attended HRATV Monthly Meeting: Employment Law Update on November 20, 2014 • Prepared FY2015 Performance Goals for all Planning Staff

PROGRAM NO.	
820	<p>COMMITTEE SUPPORT</p> <p style="text-align: right;">MEGAN LARSEN</p> <ul style="list-style-type: none"> • Provided staff support to the COMPASS Board of Directors and standing committees.
836	<p>REGIONAL TRAVEL DEMAND MODEL</p> <p style="text-align: right;">MARYANN WALDINGER</p> <ul style="list-style-type: none"> • Continued calibration and validation of the regional travel demand model. • Updated traffic count database. • Met with ACHD Staff regarding support needed for ACHD Strategic Plan and modeling technical support needed for CIP update.
838	<p>ON-BOARD TRANSIT and HOUSEHOLD TRAVEL SURVEY</p> <p style="text-align: right;">MARYANN WALDINGER</p> <ul style="list-style-type: none"> • Scheduled for spring 2015.
842	<p>CONGESTION MANAGEMENT SYSTEM PROCESS</p> <p style="text-align: right;">MARYANN WALDINGER</p> <ul style="list-style-type: none"> • Completed final comprehensive regional communications infrastructure inventory map for review by the Regional Communications Work Group. • Held meeting with the Regional Communications Work Group and Regional Operations Work Group. • Began preparations for 2015 travel time data collection.
860	<p>GEOGRAPHIC INFORMATION SYSTEM MAINTENANCE</p> <p style="text-align: right;">ERIC ADOLFSON</p> <ul style="list-style-type: none"> • Maintained and created regional geographic data layers. • Created map documents for member agencies and the public. • Provided technical support for a variety of COMPASS processes. • Created tools and methodologies to support COMPASS UPWP projects.
862	<p>REGIONAL DATA CENTER IMPLEMENTATION</p> <p style="text-align: right;">ERIC ADOLFSON</p> <ul style="list-style-type: none"> • Continued work on Regional Data Center setup and configuration.
991	<p>SUPPORT SERVICES LABOR</p> <p style="text-align: right;">MEGAN LARSEN</p> <ul style="list-style-type: none"> • Provided general accounting, human resources and administrative support to the agency.

T:\FY15\900 Operations\990 Direct Operations Maint\Board\2015 Staff Activity Report\November 2014.docx



COMPASS BOARD AGENDA ITEM VIII-B

Date: December 15, 2014

Topic: Status Report – Current Air Quality Efforts

Background/Summary:

The information below provides an update on Treasure Valley air quality.

November Air Quality Monitoring:

The Idaho Department of Environmental Quality reported seven days in the Treasure Valley with air quality levels in the moderate category during the month of November 2014.

- Six moderate days were attributable to fine particulate (PM_{2.5}) recorded in Ada and Canyon County.
- One moderate day was attributable to fine particulate (PM_{2.5}) recorded in Canyon County.

YEAR TO DATE SUMMARY

The table below summarizes the number of good, moderate, and unhealthy to hazardous days recorded since January 1, 2005.

	Good	Moderate	Unhealthy to Hazardous	Total
2005	298	65	2	365
2006	273	91	1	365
2007	227	125	12	364
2008	266	99	1	366
2009	277	83	5	365
2010	321	44	0	365
2011	260	99	6	365
2012	283	72	11	366
2013	276	81	8	365
2014	257	74	3	334

Notes: 2008 was a Leap Year hence the extra day. In 2007, one day of data is missing for the month of May.

Air Quality Categories:

- Moderate: pollution in this range may pose a moderate health concern for a very small number of individuals.
- Unhealthy for Sensitive Groups: individuals with lung disease, children and older adults are considered sensitive and may experience health effects. The general public is unlikely to be affected.
- Unhealthy / Very Unhealthy: everyone may begin to experience health effects.
- Hazardous: the entire population is more likely to experience serious health effects.

Implication (policy and/or financial):

None.

More Information:

- 1) For more information contact: MaryAnn Waldinger, Principal Planner, at 475-2242 or mwaldinger@compassidaho.org
- 2) For detailed information contact Idaho Department of Environmental Quality: Michael Toole, Regional Airshed Coordinator, at 373-0550 or Michael.Toole@deq.idaho.gov

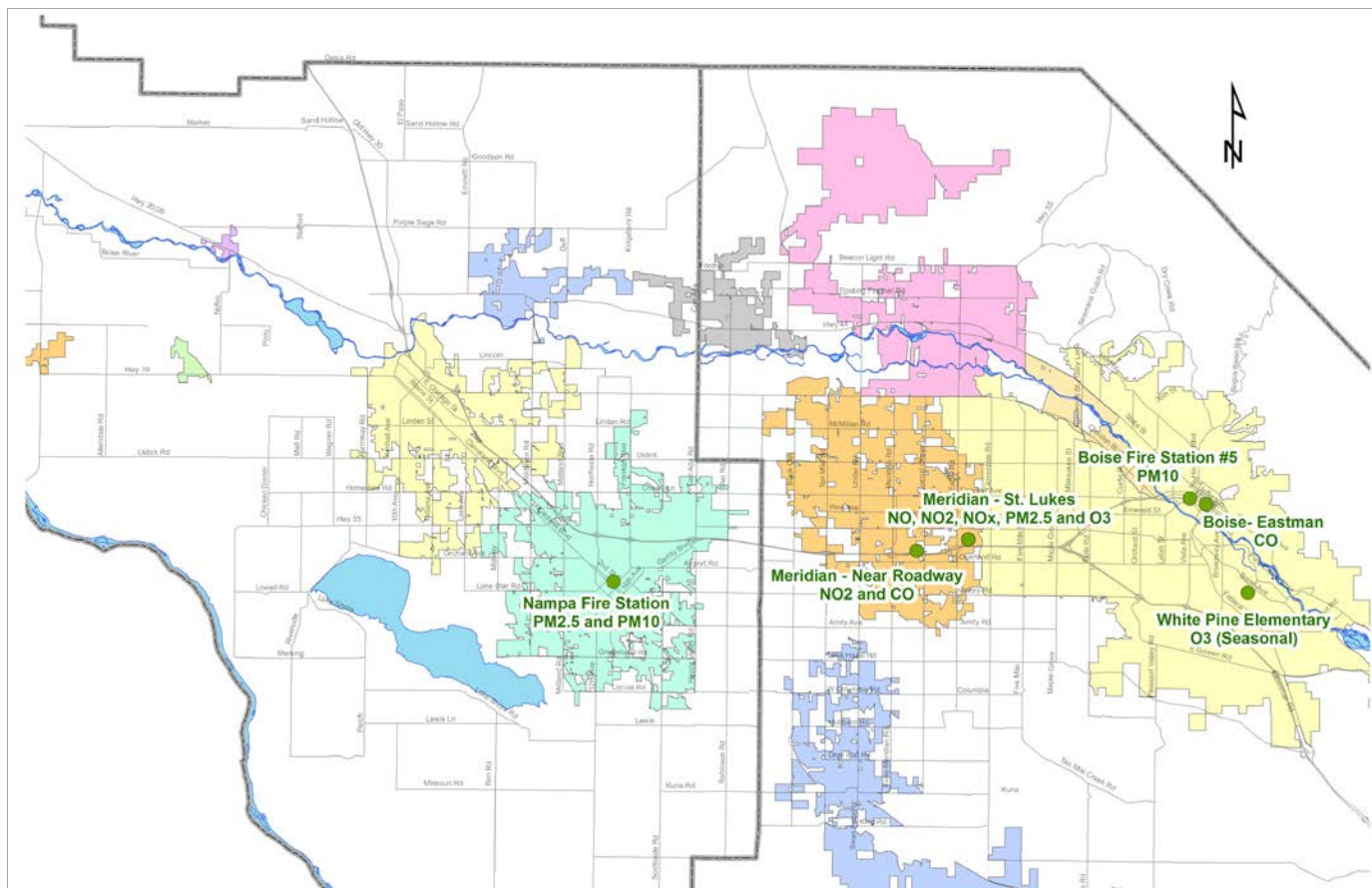


Figure 1: Map of air quality monitoring locations, Ada and Canyon County

Carbon Monoxide (CO)

A colorless, odorless, tasteless gas formed in large part by incomplete combustion of fuel. Human activities (i.e., transportation or industrial processes) are largely the source for CO contamination.

Oxides of nitrogen (NOx)

Oxides of nitrogen; a precursor (building block) of ozone. NOx is a generic term for mono-nitrogen oxides NO and NO₂ (nitric oxide and nitrogen dioxide). They are produced from the reaction of nitrogen and oxygen gases in the air during combustion, especially at high temperatures

Ozone (O3)

A colorless gas with a sweet odor. Ground-level ozone is not a direct emission from transportation sources. It is formed when volatile organic compounds, such as pesticides and solvents, and [NOx](#) combine in the presence of sunlight. Although the ozone in the upper atmosphere protects us from harmful ultraviolet rays, ground-level ozone is the main component of smog.

PM2.5

Fine particulate matter, particles smaller than 2.5 microns in diameter, which are more likely to lodge in human lungs than larger particles.

PM10

Course particulate matter, particles smaller than 10 microns in diameter, which are more likely to lodge in human lungs than larger particles.

COMPASS BOARD AGENDA ITEM VIII-C

Date: December 15, 2014

Topic: Status Report – Current Transportation Project Information

Request/Recommendation:

For information only.

Background/Summary:

The information in Attachment 1 provides a monthly update on transportation trends, issues, and current project status. A running total of transit ridership is provided in Attachment 2.

Implication (policy and/or financial):

There are no policy or financial implications.

More Information:

- 1) Attachment 1 – Status Report – Current Transportation Project Information
- 2) Attachment 2 – Yearly Alternative Transportation Trip Report
- 3) For detailed information contact: Toni Tisdale, Principal Planner, at 475-2238 or ttisdale@compassidaho.org.

TT:nb T:\FY15\600 Projects\685 TIP\MonthlyRpt\141215mmoBdStatus.docx

Status Report – Current Transportation Project Information

Following is the most recent monthly reported statistics compared to the same month a year ago:

STATUS OF PUBLIC TRANSPORTATION PROJECTS

Boise Air Terminal	Oct 2014	Oct 2013	% Change
Monthly Air Passengers (Inbound and Outbound)	240,424	216,623	10.99%
Monthly Air Freight (Inbound and Outbound) (tons)	3,918	3,820	2.57%
Public Transportation Monthly Ridership	Oct 2014	Oct 2013	% Change
ACHD VanPool (Active Routes)	99	103	-3.88%
ACHD VanPool (Trips)	22,149	23,366	-5.21%
*Valley Regional Transit Boise Urbanized Area Services	120,882	119,175	1.43%
*Valley Regional Transit Nampa Urbanized Area Services	21,554	21,029	2.50%
Total	164,585	163,570	0.62%
Other Public Transportation Reporting Average Hourly Ridership	Oct 2014	Oct 2013	% Change
*Valley Regional Transit Boise Urbanized Area Services	17.7	20.4	-13.24%
*Valley Regional Transit Nampa Urbanized Area Services	22.7	25.5	-10.98%

STATUS OF MAJOR PROJECTS

Information as of early December 2014.

Project	Sponsor	Comments*
16 th Avenue Signal Project, Nampa (KN 13958)	Nampa	This project will install crash reduction signalization countermeasures at the following intersections along 16 th Avenue: 3 rd Street North, 2 nd Street South, 3 rd Street South, and 7 th Street South. Project includes design and construction in FY2015.
21 st Avenue, Chicago Avenue to Cleveland Boulevard, Caldwell (KN 13052)	Caldwell	This project will widen 21 st Avenue from Chicago Avenue to Cleveland Boulevard from a two-lane to five-lane arterial. Work will include sidewalks, traffic signals, and railroad crossings. The concept plan is approved, and the project is now in the final design phase. Construction is expected in FY2016.
Ada County SR2S, VRT – FY2014 (13821) AND City of Caldwell SR2S – FY2014 (14340)	VRT/YMCA	These projects will fund a Safe Routes to Schools director and coordinator to work with elementary and middle schools in the Boise, Meridian, and Caldwell School Districts, as well as children who participate in the YMCA Child Development programs.
Alternatives Analysis for Downtown Boise Circulator System, Phase 1 (KN 13343)	Boise	This Discretionary FTA 5309 project will conduct the first phases of an alternatives analysis study for a downtown Boise circulator system. The evaluation of how different modes will perform on each of the alignments is currently underway. This evaluation will include analysis of ridership, costs, traffic impacts, environmental impacts, and other considerations. The findings from this evaluation will be provided to the steering committee to review early in 2015 and used to develop the draft locally preferred alternative. The draft will be provided to the public for review and comment once complete. Updates of the alternatives analysis process may be found at http://publicoworks.cityofboise.org/circulator .
Amity Avenue, Nampa (KN 10541)	Nampa	This project is a Congressional earmark to widen Amity Avenue in the City of Nampa. Construction is scheduled to begin in FY2015.

Project	Sponsor	Comments*
Bogus Basin Road Improvements, ACHD (KN 14361)	ACHD	This Federal Lands Access Program project will make improvements to Bogus Basin Road. Design is 62% complete, with an estimated completion date of March 2015. This project is scheduled for construction in August 2015.
Boise Bike Share Program, Phase I, VRT	VRT	This project will implement a bike share program in downtown Boise in spring 2015. The system will initially include 15 stations, 10 kiosks, and 114 bikes. VRT and Social Bicycles have signed a contract, and the system is set to launch in April 2015. In October 2014, VRT signed the Title Sponsors: SelectHealth and St. Luke's Health System. In November 2014, the City of Boise approved funding for the purchase of five additional transaction kiosks (bringing the total to 10). VRT is currently negotiating the sponsorships of stations throughout the system, and nearing completion of a market research study.
Bowmont Road, Lynwood to SH-45, Nampa (KN 12898)	Nampa Highway District	Realign Bowmont Road from Lynwood to SH-45. The Local Highway Technical Assistance Council intends to advance this project from FY2016 to FY2015 in the program update. The project was bid in November 2014. Construction will begin in winter 2014/2015.
Capital Maintenance, ACHD – FY2015 (KN 12363)	ACHD	This project will supplement the local maintenance program. Proposed road segments include: <ul style="list-style-type: none"> • Bogus Basin Road, Curling Drive to Mile Marker 3 • Fairview Avenue, Cloverdale Road to Five Mile Road • Five Mile Road, Ustick Road to McMillan Road • 13th Street, River Street to Front Street • 13th Street, Shoreline Drive to River Street • River Street, N. 12th Street to N. 9th Street • River Street, Americana Boulevard to N. 12th Street • Fairview Avenue, Eagle Road to Cloverdale Road • Fairview Avenue, Locust Grove Road to Eagle Road • Fairview Avenue, N. Bluff Street to Chinden Boulevard Bridge • Main Street, Chinden Boulevard Bridge to North Garden Street • Fairview Connector, N. Orchard Street to Fairview eastbound I-184 off-ramp • Fairview Connector, Fairview eastbound I-184 off-ramp to Chinden Boulevard Bridge • Westbound I-184 ramp, Chinden Boulevard to Main Street • Catalpa Drive, Collister Drive to N. 35th Street • Curling Drive, Bogus Basin Road to Braemere Road. Design started on March 20, 2014, and is approximately 82% complete. Construction is estimated to begin in June 2015.
Capital Maintenance, ACHD – FY2016 (KN 13907)	ACHD	This project will supplement the local maintenance program. Design started on June 17, 2014, and is approximately 17% complete. Construction is estimated to begin in April 2017.
Capital Maintenance, ACHD – FY2017 (KN 13479)	ACHD	This project will supplement the local maintenance program. Design should be underway soon and construction is scheduled for FY2017.
Capital Maintenance, VRT, Boise – FY2014 (13480)	VRT	This is an STP-TMA project for transit buses. VRT placed an order for vehicles on July 7, 2014 and Nov. 3, 2014. Delivery is scheduled for early 2016.
Capital Maintenance, VRT, Boise – FY2015 (KN 13510)	VRT	This is an STP-TMA project for a replacement transit bus or replacement transit facility in FY2015.
Centennial Way Roundabout, Caldwell (KN 13484)	Caldwell	This project will orchestrate an angled intersection of SH-19/Simplot Boulevard, I-84 Business (in two separate legs of a couplet Cleveland Boulevard and Blaine Street) and Simplot Boulevard (a six-leg intersection) into a potential roundabout. The project is scheduled for design in FY2014 and construction in PD.
Cherry Lane, Linder Road to Meridian Road, Lighting Improvements, ACHD (KN C315)	<u>ACHD</u>	This Local Highway Safety Improvement Program project will install continuous street lighting to improve driver safety and reduce nighttime accidents on Cherry Lane from Linder Road to Meridian Road. Design is expected to begin in FY2015 and construction is scheduled in FY2017.
City of Nampa, SR2S (KN 13043)	Nampa	This Safe Routes to School project will construct a multi-use trail between East Iowa Avenue and East Sherman Avenue to accommodate students attending Sherman Elementary School. Project is awaiting right-of-way acquisition. Construction is scheduled for FY2015.

Project	Sponsor	Comments*
Cole Road, I-84 to Franklin Road, Boise (KN RD207-16)	<u>ACHD</u>	This project will widen Cole Road from three lanes to five lanes with curb, gutter, sidewalk and bike lanes (could be adjusted based on the Cole Road and Franklin Road concept report).
Colorado Avenue and Holly Street Signal and Pedestrian Improvements, Nampa (KN 13486)	Nampa	This project will install traffic signals and pedestrian-friendly improvements at the intersection of Colorado Avenue and Holly Street in Nampa. The concept report is complete and approved by ITD. Design is currently underway. Construction is scheduled in Preliminary Development.
Deer Flat Regional Bicycle/Pedestrian Plan, Canyon County (KN 13463)	Canyon Highway District/ Nampa Highway District	This Federal Land Access Program project will develop a bicycle/pedestrian plan in the Deer Flat Refuge near Lake Lowell in Canyon County. The study is expected to be complete in July 2015. The draft Goals & Objectives, Needs Assessment, and Existing Conditions documents were provided for review and are the primary subject of the Technical Advisory Committee meeting on December 3, 2014.
Federal Aid Arterials and Collectors – FY2014 (KN 12050)	<u>ACHD</u>	This project will supplement the local overlay program. Design is nearly complete. Proposed road segments include: <ul style="list-style-type: none"> • Fairview Avenue, Main Street to Locust Grove Road • Franklin Road, Linder Road to N. Main Street • Bogus Basin Road, Hill Road to Curling Drive • Castle Drive, Pierce Park Lane to Castle Hills Way • Castle Drive, Castle Hills Way to Hill Road • Hill Road, Gary Lane to Pierce Park Lane • Hill Road, Pierce Park Lane to Holly Hill Drive • Hill Road, Holly Hill Drive to Collister Road • Hill Road, Collister Road to N. 36th Street • Hill Road Parkway, Seaman Gulch Road to Gary Lane • State Street, Veterans Memorial Parkway to N. Clover Drive Construction will begin in spring 2015.
Five Mile Road, Franklin Road to Fairview Avenue (KN 11582)	<u>ACHD</u>	This project will widen Five Mile Road between Franklin Road and Fairview Avenue to five lanes with shoulder, sidewalk, and railroad crossing improvements. Construction is underway, but weather and utility issues delayed completion to spring 2015.
Franklin Road, Black Cat Road to Ten Mile Road (KN 12368)	ACHD	This project will widen Franklin Road from two lanes to five lanes from Black Cat Road to Ten Mile Road. Work includes curb, gutter, sidewalks, bicycle facilities, bio-infiltration swales, and reconstructing the intersection at Franklin Road and Black Cat Road. Design is 99% complete, and the final right-of-ways plans are received, starting right-of-way acquisition. Construction is expected to begin in August 2016.
Garden City West Bridge Pathway Crossing – FY2012 (KN 13512)	Garden City	This multi-jurisdictional project will help fund construction of a 12-foot wide, 180-foot long bicycle-pedestrian bridge across the Boise River between Glenwood Street, Eagle Road, State Street, and Chinden Boulevard, connecting over 30 miles of non-motorized pathways. The project is awarded. The pre-construction meeting is scheduled for early December 2014. Construction is expected to start after January 1, 2015.
Greenhurst Road Signals, Nampa (KN 13959)	Nampa	This project will install crash reduction signalization countermeasures at three successive intersections along East Greenhurst Road. Design and construction is scheduled in FY2015.
Homedale Road Intersection Improvements, Caldwell (13488)	Caldwell	This project will provide intersection safety improvements on Homedale Road at the following locations: Montana Road, Lake Road, Florida Avenue, and Midway Road. Construction is scheduled to be complete by April 2015.
High Accident Warning Signs, Canyon Highway District (KN 13956)	Canyon Highway District	Install horizontal curve signage in multiple locations throughout Canyon Highway District to increase safety related to lane departures. The project is currently in final design review. The plans, specifications, and engineer's estimates package is complete and will be submitted once environmental clearance is obtained from ITD. Construction is tentatively scheduled for spring 2015.
I-84, Bridge Repair, Boise (KN 13035)	ITD	This project provides bridge rehabilitation at various locations on I-84 in Boise. Construction is scheduled for FY2015.

Project	Sponsor	Comments*
I-84, Broadway Avenue to Gowen Road Mainline Widening (KN 13812) AND I-84, Gowen Interchange Reconstruction, Boise (KN 09822)	ITD	This GARVEE project will add a third lane to I-84 between the ramps of Broadway Avenue and Gowen Road Interchanges. The companion project is also a GARVEE project and will replace the existing interchange at Exit 57 in Boise with a new traditional interchange. Construction began on March 4, 2014, and is scheduled for completion on October 1, 2015. No update available.
I-84, Broadway Avenue Interchange Reconstruction, Boise (KN 09821) AND I-84, Gowen Railroad Bridge Eastbound Lane(KN 12029) AND Westbound Lane (12379), Boise	ITD	This project is a GARVEE project to replace the existing interchange at Exit 54 in Boise with a new Single Point Urban Interchange (SPUI). The companion projects will replace the existing railroad bridges in east Boise near the Broadway Interchange. Construction began February 25, 2014, and is scheduled to be complete by December 1, 2015. No update available.
I-84, Garrity Interchange Eastbound On-Ramp, Nampa (KN 13934)	ITD	This project will add a lane to the eastbound on-ramp (right-on from northbound Garrity Boulevard) to the eastbound on-ramp. It may also include adding another lane (left-on from southbound Garrity Boulevard) to the eastbound on-ramp, as well as possible dual left turn lanes onto the westbound on-ramp, dependent on a cost/benefit analysis. No update available.
I-84 and I-184, Various Ramp Improvements (KN 13936)	ITD	This is a pavement resurfacing and restoration project on various I-84 and I-184 (the Connector) on/off-ramps. Design work is in progress. No update available.
I-84, Meridian Interchange Reconstruction, Meridian (KN 10939) AND I-84, Meridian Interchange to Five Mile Road (KN 13057)	ITD	This GARVEE project will replace the existing interchange at Exit 44 in Meridian with a new Single Point Urban Interchange (SPUI). The project will also add the fourth lane to I-84 in this area. The companion project will reconstruct the pavement on the outside travel lanes and shoulder in both directions on I-84 between the Meridian Interchange and the Flying Wye. Construction is anticipated to be complete by October 2015. No update available.
I-84, Pavement Striping – FY2015 (KN 12343)	ITD	This project will restripe the I-84 corridor. Work is scheduled for FY2015.
I-84, Ramp Pavement Improvements – FY2015 (KN 13456)	ITD	This project will resurface pavement on I-84 ramps. Work is schedule for FY2015.
I-84, Sand Hollow Interchange, Canyon County (KN H311)	ITD	This project will replace the bridge at I-84 and Sand Hollow in Canyon County. Design is expected to begin in FY2015, with construction scheduled in FY2018.
I-84, Sign Structures at US 20/26 and I-84B/Centennial Way, Caldwell (KN H321)	ITD	This project will replace signage at the I-84 interchanges at US 20/26 and I-84B/Centennial Way in Caldwell to improve safety. Design is expected to begin in FY2015, with construction scheduled in FY2019.
I-84, UPRR East Lateral Canal Bridge, Nampa (KN 12866) AND I-84, Northside Boulevard Underpass, Nampa (KN 12867)	ITD	These are bridge rehabilitation and deck replacement projects in Nampa that were companioned under one contract. Reconstruction of the eastbound Northside bridge deck is complete, and the contract completed placing panels on the westbound railroad bridge deck. No update available.
I-84, US 2026 (Franklin Road) in Caldwell to Franklin Boulevard in Nampa (KN H306)	ITD	This project will reconstruction and realign I-84 from US 20/26 (Franklin Road) in Caldwell to Franklin Boulevard in Nampa. No update available.
I-84B, Micro Seals, Canyon County – FY2015 (KN 13465)	ITD	This project will provide for preventive maintenance be seal coating I-84B in Canyon County. Construction is scheduled in FY2015.
ITS, Garrity/Idaho Center Boulevard Signal Upgrade, Nampa (KN 13960)	Nampa	This project will install adaptive technology cash reduction countermeasures at several high-accident signalized intersections in the Garrity Boulevard/Idaho Center Boulevard north corridor. Design is expected to begin in FY2015, with construction scheduled in FY2016.
ITS, SH-55 (Eagle Road), Signal Timing, Meridian and Boise – FY2019 (KN H314)	ITD	This project will improve signal timing on SH-55 (Eagle Road) from Ustick Road to Wainwright Drive in the cities of Meridian and Boise. Design is scheduled in FY2015, with construction expected in FY2019.
Intersection Improvements, Canyon Highway District (KN 13489)	Canyon Highway District	Safety improvements at intersections in Canyon Highway District. Intersections include: Lake Avenue and Orchard Avenue, Middleton Road and Linden Road, Homedale Road and 10th Avenue, Midway Avenue and Lonestar Road, Homedale Road and Indiana Avenue. The project is awarded and the preconstruction meeting is scheduled for the first week of December 2014.

Project	Sponsor	Comments*
Intersection Middleton Road and Flamingo Avenue, Nampa (KN 13502)	Nampa	This project will add a traffic signal at the intersection of Middleton Road and Flamingo Avenue in Nampa. Final design is complete, and construction will begin in spring 2015.
Lake Hazel Road Extension, Ada County (KN RD213-17)	ACHD	This project will extend Lake Hazel Road from the existing east end terminus to Cole Road as a two-lane road with an asphalt pathway to improve area circulation and connectivity. Design is 95% complete. The right-of-way acquisition phase is underway. Construction is scheduled to begin in May 2015.
Linder Road and Deer Flat Road Intersection, Kuna (KN 13492)	ACHD	This project will make improvements to the intersection at Linder Road and Deer Flat Road in Kuna and will include curb, gutter, sidewalk, and bike lanes. Design is 22% complete, with construction in preliminary development.
Middleton Road and Ustick Roundabout, Caldwell (KN 13487)	Caldwell	This project will improve a four-way stop at the Middleton Road and Ustick Road intersection by building a roundabout to help traffic flow and reduce congestion. Design in underway, with construction in preliminary development.
Natures Wood Duck Island Trail Restoration, Ada County	Ada County	This project will make permanent repairs to a portion of the Boise River Greenbelt within the Bethine Church River Trail area. Environmental documents are approved. The final plans, specifications, and engineer's estimate documents are submitted and the state/local agreement is signed. The bid is awarded. Construction is expected to begin after January 1, 2015.
Old Highway 30, Plymouth Street Bridge, Caldwell (KN 13494)	Canyon Highway District / Caldwell	This project will replace the Plymouth Street bridge with a new two-lane structure. The existing bridge will remain in place and used as a bicycle and pedestrian bridge. This project is funded with two funding sources. The Request for Proposals is available with proposals due in early January 2015. Construction is in preliminary development.
Pathway, Dry Creek Trail, Phase 1, Eagle (KN 13916)	Eagle	Project provides a bicycle and pedestrian underpass at SH-44 on the west side of the City of Eagle. It will connect the Dry Creek Pathway and the northeast side of the City of Eagle with the Eagle Island Pathway system. Design is underway. Construction is scheduled in FY2015.
Pathway, Garden City to Americana Boulevard, Boise (KN 13514)	Boise	This project will construct a 12-foot wide paved pathway to fill a 4,100 linear-foot gap in the Greenbelt system on the south side of the river between Main Street and Americana Boulevard with connection to Ann Morrison Park. Construction is scheduled in FY2015. No update available.
Pathway, Logger's Creek Bridge Replacement, Boise (KN 13920)	Boise	This project will replace the old wooden pedestrian bridge with a new metal structure. The bridge will match with existing alignment. Design is scheduled to begin in FY2015, with construction scheduled in FY2017.
Pathway, Orchard Street, Kuna (KN 14342)	ACHD/ Kuna	This project will provide pedestrian and bicycle facilities on the west side of Orchard Street from Avalon south to the Kuna Greenbelt. Work will include curb, gutter, and sidewalk on the north half up to the end of pavement. The southern portion will include a paved six-foot asphalt pathway. Design is complete and environmental review is underway. Construction is scheduled for July 2015.
Pathway, Warm Springs, Ada County (KN H332)	Ada County	This project will design, reconstruct, and improve 1.3 miles of the Warm Springs Pathway, a parallel alternative transportation route for bicyclists and pedestrians along Warm Springs Avenue in Ada County. This project includes piping and veering a portion of the open irrigation canal and widening that portion of the trail from 8-feet to 10-feet. The start of design is awaiting final ITIP approval and the State/Local agreement. Construction is scheduled in FY2016.
Pedestrian Improvements, Lincoln Elementary, Caldwell (KN H325)	Caldwell	This project will upgrade sidewalks along Grant Street and provide safe crosswalks, pedestrian ramps, and a pedestrian island, and rapid flashing beacons at two major thoroughfares in Caldwell. The project is scheduled for design and construction in FY2015.
Pedestrian Improvements, Middleton Heights Elementary, Middleton (KN H330)	Middleton	This project will add missing segments of sidewalk that lead to Heights Elementary on the west side of Cemetery Road in Middleton. Design is scheduled for FY2015 and awaiting the State/Local agreement from ITD. Construction scheduled in FY2016.

Project	Sponsor	Comments*
Pedestrian Improvements, North Middleton Road, Middleton (KN 14343)	Middleton	This project will install sidewalks along North Middleton Road on the west side; from Triumph Drive south 225-feet to connect to sidewalks existing along Mountain View Subdivision across the street from Mill Creek Elementary School. Design is currently underway. Construction is scheduled in FY2015.
Pedestrian Improvements, South Midland Boulevard, Nampa (14344)	Nampa	This project will place a HAWK pedestrian-activated signal at the Wilson Pathway where it crosses Midland Boulevard. Pedestrian pre-warning signals and thermo crosswalk markings will also be installed to improve safety concerns at the intersection. Design and construction are scheduled in FY2015.
Pedestrian Improvements, Stoddard Pathway/Greenhurst Road, Nampa (KN H328)	Nampa	This project will install pedestrian and bicycle safety improvements at the Stoddard Pathway crossing at East Greenhurst Road. Improvements include a pedestrian activated HAWK signal, wheelchair accessible ramps, pathway realignment, lighting, crosswalk markings, signage, and modifications to the parking lot layout to the north. Design is scheduled for FY2015, and construction in FY2016.
Planning, Travel Survey and Transit On-Board Data Collection (KN 13048)	COMPASS	This is a minor update to collect household travel characteristics and on-board transit ridership data in Ada and Canyon Counties. The household travel study will use a small sample size for use in verification of trip characterizations. The on-board transit ridership survey is a full update to the data collected in 2010. The project will begin in the spring 2015 with Request for Proposals, consultant selection and data collection to begin September 2015.
Riverside Road and Lake Shore Drive, Rehabilitation, Canyon County (KN 14362)	Canyon Highway District	This Federal Land Access Program project will rehabilitate Riverside Road and Lake Shore Drive near Lake Lowell in Canyon County. The match agreement with FHWA is in place. Construction is scheduled in FY2015. The project is being managed by the Western Federal Lands Division of the Federal Highway Administration. Design is expected to begin in the fall 2014.
SH-19, Corridor Plan	ITD	This is a Corridor Management Plan covering 16.1 miles of SH-19 in Canyon and Owyhee Counties. The draft Corridor Management Plan is expected to be delivered in summer 2015. No update available.
SH-19, Simplot to Blaine Street, Caldwell (KN 13937)	ITD	This project will mill the existing surface and place an asphalt overlay from Simplot to Blaine Street (approximately 2.5 miles). Design work is underway. No update available.
SH-21, (Luck Peak) High Bridge to Robie Creek (KN 12354)	ITD	This is a 4.7-mile pavement rehabilitation project (partly in Ada County, but mostly in Boise County). No update available.
SH-44, Canyon Canal Bridge, Middleton (KN H312)	ITD	This project will replace the bridge on SH-55 at Canyon Canal Bridge in the City of Middleton. Design is scheduled in FY2015, with construction expected in FY2019.
SH-44 Corridor Preservation (KN 07827)	ITD	This project is a feasibility, access management, construction phasing, and National Environmental Policy Act (NEPA) study only. The Finding of No Significant Impact is anticipated in late 2014. No update available.
SH-45 Corridor Plan	ITD	The Idaho 45 corridor plan will develop a ten-year plan to identify current and future highway needs on SH-45 on an 18-mile section of SH-45 beginning at SH-78 in Owyhee County and extending to the City of Nampa and the I-84 Business Loop. The draft Corridor Management Plan is expected to be delivered in summer 2015. No update available.
SH-45, Deer Flat to I-84B, Nampa (KN 13030)	ITD	This is a 5.5-mile pavement rehabilitation project through the City of Nampa. Traffic control plans are being developed, and the project is obtaining environmental clearance. The plans, specifications, and engineer's estimate is delivered, and the project is scheduled for construction in FY2015. No update available.
SH-45, Snake River Bridge, Walters Ferry (KN 13389)	ITD	This project will rehabilitate and refurbish the bridge on SH-45 over the Snake River near Walters Ferry to mitigate scouring, or wear, in the riverbed. Design will begin in FY2015, and construction is scheduled for FY2017.
SH-55 (Eagle Road) and McMillan Road Intersection (KN 13058)	ACHD/ITD	This is a joint intersection improvement project between ACHD and ITD at Eagle Road and McMillan Road. The project will be sponsored, administered, designed, and bid by ACHD. ITD's participation is review and funding. Construction is anticipated to begin in January 2015.

Project	Sponsor	Comments*
SH-55 (Eagle Road), I-84 to SH-44 Micro Seals – FY2015 (KN 13466)	ITD	This project will provide seal coats on SH-55 (Eagle Road) between I-84 and SH-44. Construction is expected in FY2015.
SH-55 (Eagle Road), Meridian Towne Center (KN 13349)	Developer	Add one lane northbound from Franklin Road to Fairview Avenue and add one lane southbound from River Valley Street to Franklin Road. The project will be constructed by the developer of the Meridian Towne Center shopping center using State Tax Anticipated Revenue (STAR) financing. Construction is scheduled in FY2015; however the project phasing is based on actual square footage of development. No update available.
SH-55, Intersection of Karcher Road and Indiana Avenue (KN 13475)	ITD	This is an intersection improvement project near the City of Nampa to rebuild the roadway. The project includes minor widening and adds traffic signals. The final plans, specifications, and engineer's estimate are expected in fall 2015. No update available.
SH-55, Intersection of Karcher Road and Lake Road (KN 12383)	ITD	This is an intersection improvement project near the City of Nampa to rebuild and widen the roadway and add traffic signals. Additional right-of-way acquisition is required. The final plans, specifications, and engineer's estimate are expected in fall 2015. No update available.
SH-55, Intersection of Karcher Road and Middleton Road, Nampa (KN 12046)	ITD/ Nampa	This project will reconstruct the existing Karcher Road and Middleton Road intersection from just west of the Elijah Drain culvert to the vicinity of Sundance Street, including additional lanes, new traffic signals, improved drainage and on-street lighting. Construction will begin in early FY2015.
SH-55, Intersection of Karcher and Midway Road (KN 13025)	ITD	This is an intersection improvement near the City of Nampa to rebuild and widen the roadway and add traffic signals. Additional right-of-way acquisition is required. The final plans, specifications, and engineer's estimate are expected in fall 2015. No update available.
SH-55, Intersection of Karcher Road and Nampa-Caldwell Boulevard (KN 13033)	ITD	This is an intersection improvement project to time signals, add signage, and reconfigure striping and lanes to minimize crashes at this location. No update available.
SH-55, Snake River Bridge, Marsing (KN 13387)	ITD	This project will replace the bridge on SH-55 over the Snake River near Marsing. Design is expected to begin in FY2015, with construction scheduled in FY2017.
SH-69 Corridor Plan	ITD	The SH-69 corridor plan will develop a 10-year plan to identify current and future highway needs on SH-69 beginning at the City of Kuna and extending to the City of Meridian, and the interchange with I-84. Completion of the plan is expected in summer 2015. No update available.
SR2S, City of Nampa – FY2014 and FY2015 (14339)	Nampa	This will fund a Safe Routes to Schools coordinator to work with elementary and middle schools throughout the City of Nampa. This program implements educational and encouragement activities at schools and community-wide events. These funds will cover two years of funding a part-time position and related materials. No update available.
SR2S, VRT, Ada County – FY2015 (KN 13908)	VRT	This Safe Routes to School project will support up to three full-time staff serving schools in Ada County, with a focus on the Boise and Meridian School Districts. The Treasure Valley YMCA will receive pass-through funds for this project. No update available.
Signal Timing Improvements, ACHD (KN 13491)	ACHD	This project will make signal timing improvements for traffic safety at: Franklin Road, Touchmark Road to Allenbaugh Road; Overland Road, Cloverdale Road to Overland Park; Boise Towne Square Mall area. Design is 91% complete. Implementation began in March 2014, with the final report expected in late December 2014.
Signal Timing Plan Update, ACHD (KN 13955)	<u>ACHD</u>	Update signal timing on six corridor sections to improve mobility and increase safety. Signal timing improvements will occur on sections of Park Center Boulevard, Orchard Road, Curtis Road, Federal Way, State Street, and Ustick Road. The project is a design-only project, and is scheduled for FY2015.
South Cemetery Road, SH-44 to Willow Creek, Middleton	Middleton	Project funds environmental study and preliminary and final designs for a new 0.284-mile roadway segment linking SH-44 and Middleton Road by way of Sawtooth Lake Drive in Middleton. The City submitted the draft design study report and amended environmental document to ITD, and is awaiting ITD review comments before proceeding with final design. Construction is expected in FY2018.
South Orchard Access Road, Railroad Crossing, Ada County (KN 12360)	ITD	This project will add a railroad gate and signal at the South Orchard Access Road in Ada County. Construction is scheduled in FY2015.

Project	Sponsor	Comments*
State Street and Collister Drive Intersection, ACHD (KN 13481)	ACHD	This project will make geometric and operational improvements to the intersection at State Street and Collister Drive. Design started in March 2014, and is approximately 30% complete with expectations to complete design by February 2016. Construction is scheduled to begin in October 2017.
Swan Falls Road Shoulder Widening, Kuna – FY2012 (KN 13518)	ACHD	This project will construct 3 miles of 5-foot shoulders along Swan Falls Road from Poen Road to Initial Point to provide safe walking, bicycling and vehicle pull-offs with funds through the National Scenic Byways Program. This project is awarded. Construction is scheduled to begin in March 2015.
Three Cities Intelligent Transportation System (KN 08821)	ACHD	ACHD in cooperation with FHWA, is designing operational improvements, such as closed circuit television cameras, speed detectors, and adaptive signal technology to SH-55 (Eagle Road), SH-44 (State Street), Glenwood Street, and US 20/26 (Chinden Boulevard). Construction began in June 2014 and is 77% complete. The project is expected to be complete by December 9, 2014.
Transit – Associated Capital Improvements, Nampa – FY2013 (KN 12760)	Nampa	This project includes bicycle and pedestrian improvements at three locations near transit routes in Nampa. Design is underway, and construction is scheduled for FY2015.
Transit – Bicycle and Pedestrian Infrastructure, Nampa – FY2014 (KN 13711)	Nampa	The bike and walk to downtown project will provide bicycle and pedestrian infrastructure to enlarge access and connectivity by connecting multiple neighborhoods in southeast and north Nampa to the downtown area and to one of the three transit transfer stations in Nampa. Design is underway, and construction is scheduled in FY2015.
US 20/26 Corridor Preservation (KN 07826)	ITD	This project is a feasibility, access management, construction phasing, and National Environmental Policy Act (NEPA) study only. A finding of no significant impact is anticipated in late 2014. No update available.
US 20/26 Broadway Bridge, Boise (KN 11588)	ITD	A new bridge will be constructed to replace the existing structure on US 20/26 over the Boise River in downtown Boise, including reconstruction/widening of Broadway Avenue between Myrtle Street and University Avenue and rehabilitation of the existing pavement between Front Street and Myrtle Street. The project is scheduled to deliver the plans, specifications, and engineering estimates by October 1, 2015, with construction beginning in late 2015, and continuing through late 2016.
US 20/26, Oregon State Line to I-84, Corridor Study	ITD	This is a Corridor Management Plan covering 22.1 miles of US 20/26 in Canyon County. The draft Corridor Management Plan is expected to be delivered for internal review by the end of fall 2014. No update available.
US 20/26, Smeed Parkway to Middleton Road, Caldwell (KN 13921)	ITD	This project will reconstruct, realign, and widen US 20/26 from Smeed Parkway to Middleton Road in Caldwell. Design is currently underway, but construction is still considered unfunded.
US-95 Access Management Plan (South Segment)	ITD	This is a Corridor Management Plan covering 50.8 miles of US-95 in Owyhee and Canyon Counties (south). No update available.
US-95, Junction US 20/26 Union Pacific Railroad Overpass (KN 12886)	ITD	This is a bridge replacement project. Roadway and bridge design is underway. Railroad coordination is progressing. This project was delayed until FY2016 to accommodate projects of more critical need.
Ustick Road, Linder Road to Meridian Road, Meridian (KN RD202-35)	ACHD	This project will widen Ustick Road from Linder Road to Meridian Road in Meridian to five lanes and will include curb, gutter, sidewalks, and bike lanes. Design on the project is 65% complete. Construction is scheduled to begin in January 2018.

*Project updates were not received from ITD and the City of Boise.

T:\FY15\600 Projects\685 TIP\MonthlyRpt\1412.doc

CY2014	Jan	Feb	Mar	Apr	May	Jun	Jul	Aug	Sept	Oct	Nov	Dec	Total - Oct	To Date % Change 13-14
ACHD Vanpool (Trips)	24,139	21,360	22,305	23,405	20,955	20,566	21,693	19,517	20,985	22,149			217,074	-6.10%
VRT Boise Urbanized	112,101	109,219	110,125	118,204	103,073	93,007	98,974	96,200	112,883	120,882			1,074,668	0.06%
VRT Nampa Urbanized	17,685	17,528	17,272	19,708	17,317	15,967	15,051	15,432	19,889	21,554			177,403	-6.00%

CY2013	Jan	Feb	Mar	Apr	May	Jun	Jul	Aug	Sept	Oct	Nov	Dec	Total - Oct	To Date % Change 12-13
ACHD Vanpool (Trips)	24,820	22,491	23,554	24,362	23,031	21,357	22,832	23,272	22,087	23,366	21,018	21,040	231,172	-0.51%
VRT Boise Urbanized	105,668	118,669	112,729	117,867	111,770	91,450	99,098	94,982	102,585	119,175	104,531	101,757	1,073,993	0.95%
VRT Nampa Urbanized	18,265	19,685	19,112	21,111	18,199	15,513	15,816	18,003	21,988	21,029	14,329	15,251	188,721	5.88%

CY2012	Jan	Feb	Mar	Apr	May	Jun	Jul	Aug	Sept	Oct	Nov	Dec	Total - Oct	To Date % Change 11-12
ACHD Vanpool (Trips)	23,327	22,989	23,821	23,245	24,007	22,096	22,500	24,676	21,216	24,475	22,207	20,247	232,352	10.88%
VRT Boise Urbanized	96,100	119,064	106,068	118,989	116,421	92,998	94,139	102,614	105,805	111,715	110,719	102,009	1,063,913	-1.97%
VRT Nampa Urbanized	18,511	16,167	18,379	19,645	14,427	15,501	15,068	17,117	20,330	23,101	19,687	16,368	178,246	2.99%

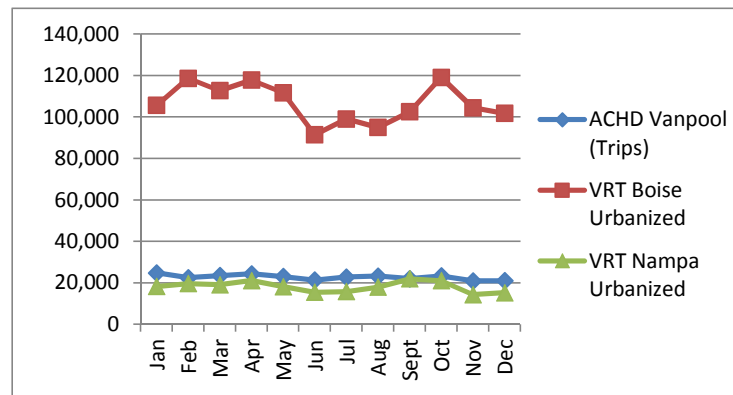
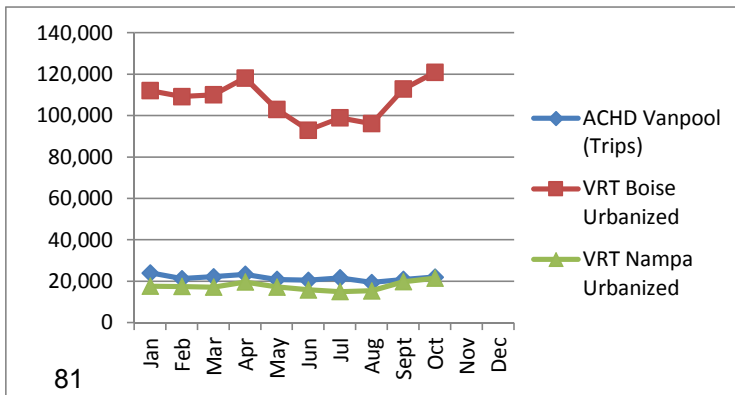
CY2011	Jan	Feb	Mar	Apr	May	Jun	Jul	Aug	Sept	Oct	Nov	Dec	Total - Oct	To Date % Change 10-11
ACHD Vanpool (Trips)	20,243	22,046	22,121	20,936	20,169	21,510	19,336	23,097	20,347	19,749	22,240	20,832	209,554	7.32%
VRT Boise Urbanized	101,936	101,144	117,704	108,108	111,366	106,275	93,834	115,761	114,726	114,484	110,885	103,464	1,085,338	5.47%
VRT Nampa Urbanized	15,364	16,508	18,362	17,393	16,347	13,325	15,186	19,370	20,998	20,215	18,235	15,202	173,068	-5.94%

CY2010	Jan	Feb	Mar	Apr	May	Jun	Jul	Aug	Sept	Oct	Nov	Dec	Total - Oct	To Date % Change 09-10
ACHD Vanpool (Trips)	20,065	18,942	22,466	20,626	17,675	20,417	18,630	19,046	18,790	18,596	18,036	19,160	195,253	-0.18%
VRT Boise Urbanized	103,704	106,299	120,174	114,145	99,610	97,152	91,474	95,262	98,048	103,166	93,466	94,292	1,029,034	0.84%
VRT Nampa Urbanized	15,466	17,515	18,362	21,100	16,136	17,265	16,151	18,143	20,607	23,260	15,866	13,973	184,005	6.52%

CY2009	Jan	Feb	Mar	Apr	May	Jun	Jul	Aug	Sept	Oct	Nov	Dec	Total - Oct	To Date % Change 08-09
ACHD Vanpool (Trips)	21,341	19,323	21,325	21,244	17,327	19,693	18,704	17,213	19,449	19,977	17,808	19,387	195,596	-7.47%
VRT Boise Urbanized	104,815	105,104	107,494	115,431	100,891	98,370	95,048	87,730	102,043	103,486	98,446	102,061	1,020,412	7.01%
VRT Nampa Urbanized	15,591	16,796	17,555	18,710	15,410	15,862	16,021	17,117	19,857	19,823	16,751	15,707	172,742	-3.02%

2014

2013



DEMOGRAPHIC ADVISORY COMMITTEE

Attendance List of Members

Member Agency/Name	Jan '14 No Mtg	Feb '14	Mar '14 No Mtg	Apr '14	May '14 No Mtg	June '14 No Mtg	July '14	Aug '14 No Mtg	Sept '14 No Mtg	Oct '14	Nov '14 No Mtg	Dec '14	TOTAL
ACCHD/K. Knapp													
AChD/ C. Little		1		1						1			
Ada County/B.Danielson		1		1			1			1			
BSU/M. Fragkias													
Canyon Co. Dev. Services /J. Almeida/D. Root/P. Nilsson		1		1			1			1			
City of Boise/ B. Eggleston		1		1			1			1			
City of Caldwell/B. Billingsley		1					1			1			
City of Eagle/ N. Baird Spencer		1		1			1			1			
City of Garden City/J. Thornborrow													
City of Kuna/W. Howell		1		1									
City of Meridian/ B. McClure		1		1			1			1			
City of Middleton/ D. Taylor													
City of Nampa/ N. Holm		1					1						
City of Star/ N. Mitchell													
IDEQ/ D. Luft				1						1			
ITD / M. Wasdahl		1		1			1			1			
Public Participation Committee/J. Ross		1		1			1						
Valley Regional Transit/ R. Jalbert													
Ex officio Members													
Chamber of Commerce - Ada County/M.Tate		1		1						1			
Chamber of Commerce- Canyon Co./T. Kasper													
COMPASS/C. Miller		1		1			1			1			
Development Community - Ada County/C.Findlay													
Major Utilities / B. Snow/B. Defenbach							1			1			
Development Community - Canyon County/ G. Manship				1									

REGIONAL TECHNICAL ADVISORY COMMITTEE

Attendance List of Members

Member Agency/Name	Jan '14	Feb '14	Mar '14	Apr '14 No Mtg	May '14	June '14 No Mtg	July '14	Aug '14	Sept '14 No Mtg	Oct '14 No Mtg	Nov '14 No Mtg	Dec '14	TOTAL
General Members													
<i>ACHD/S. Anderson/T.Ferch</i>	1	1	1		1			1					5
<i>Ada County /R. Beck/M. Leatherman</i>	1	1	1		1		1	1					6
<i>BSU/N. Nimmmons</i>	1	1			1			1					4
<i>Canyon County / J. Almeida, D. Root, P. Nilsson</i>		1	1		1		1	1					5
<i>Canyon Highway District #4/C. Hopper</i>	1	1			1		1	1					5
<i>City of Boise/ D. Fluke/ K. Lacey/K. Gallagher</i>	1	1	1		1		1	1					6
<i>City of Caldwell/R. MacDonald</i>		1			1		1	1					4
<i>City of Eagle/N. Baird Spencer</i>		1			1		1	1					4
<i>City of Garden City/J. Thornborrow</i>			1										1
<i>City of Kuna/W. Howell</i>	1	1	1		1			1					5
<i>City of Meridian/J. Lucas</i>	1	1	1		1			1					5
<i>City of Middleton/D. Taylor</i>													0
<i>City of Nampa/C. Bowman/L. Grady</i>		1	1		1		1	1					5
<i>City of Parma/N. Leigh</i>													0
<i>City of Star/N. Mitchell</i>													0
<i>IDEQ/M. Toole</i>			1										1
<i>ITD/vacant as of 3/24/14</i>													0
<i>Nampa Highway District #1/E. Shannon</i>	1	1	1		1			1					5
<i>Public Participation Committee/D. Smith</i>		1	1				1	1					4
<i>Valley Regional Transit/Margaret Havey</i>	1	1	1		1		1	1					6
Ex officio Members													
<i>Central District Health/R. Howarth</i>	1				1		1						3
<i>COMPASS/D. Matson</i>	1	1	1				1	1					5
<i>Governor's Office/D. Hensley</i>													0

TRANSPORTATION MODEL ADVISORY COMMITTEE

Attendance List of Members

Member Agency/Name	Jan '14	Feb '14 No Mtg	Mar '14	April '14 No Mtg	May '14 No Mtg	June '14 No Mtg	July '14	Aug '14 No Mtg	Sept '14	Oct '14 No Mtg	Nov '14	Dec '14	TOTAL
Nampa Highway District #1/E. Shannon													
ACHD/ <i>S. Martin</i>	1		1						1				3
Ada County Develoment Services/ <i>M. Basham</i>													0
Canyon County/ <i>J. Almeida, P. Nilsson</i>	1												1
Canyon Highway District/No. 4/ <i>T. Richard</i>			1						1		1		3
City of Boise/ <i>K. Gallagher or A. Tuning</i>	1		1				1		1		1		5
City of Meridian/ <i>A. Petersen</i>	1								1		1		3
City of Nampa/ <i>/C. Bowman/J. Barnes</i>	1		1				1		1		1		5
IDEQ/ <i>D. Luft</i>	1								1				2
ITD/ <i>K. Sablan & D. Szplett</i>	1		1				1		1				4
Nampa Highway District #1/E. Shannon													
Public Participation Committee/ <i>J. Madsen</i>			1						1		1		3
Valley Regional Transit/ <i>R. Jalbert</i>													0
Appointed Transportation/Land Use/Air Quality Professionals													
<i>Stephen Lewis</i> , Keller Associates	1						1		1		1		4
<i>Jim Pline</i> , Pline Engineering	1		1				1				1		4
<i>Jay Witt</i> , URS Washington Division	1		1				1		1		1		5
Ex officio Members													
COMPASS/ <i>M. Waldinger</i>	1						1		1		1		4

REGIONAL GEOGRAPHIC ADVISORY COMMITTEE

Attendance List of Members

Member Agency/Name	Jan '14 No Mtg	Feb '14	Mar '14	Apr '14 No Mtg	May '14	Jun '14 No Mtg	July '14 No Mtg	Aug '14 No Mtg	Sept '14	Oct '14 No Mtg	Nov '14 No Mtg	Dec '14	TOTAL
Nampa Highway Distr. #1/Eric Shannon													
Ada County Assessors/A .Kawalec		1	1		1				1				4
Ada County Development Services/M. Basham		1	1						1				
Ada County Highway District/C. Spencer		1			1								2
Ada County Sheriff Office/T. Tyson		1	1		1				1				
Canyon County Development Services/S. Higuera		1											1
Canyon Highway District No. 4/K. Knapp													
Canyon County Sheriff Office/F. Smith		1	1		1								0
City of Boise/J. Hetherington		1	1		1				1				4
City of Caldwell/D. Marston		1							1				2
City of Eagle/R. Dodge		1			1								2
City of Garden City/E.Akin													0
City of Kuna/M. Borzick			1		1								2
City of Meridian/R. Jack		1			1				1				3
City of Nampa/C. Tarter		1	1		1				1				4
ITD/B. Lacabanne			1		1								2
Nampa Highway Distr. #1/Eric Shannon													0
Public Participation Committee/M. Gaddi/K. Watkins													0
Ex officio Members													
COMPASS/E. Adolfsen		1	1		1				1				4



Memorandum

To: Matt Stoll, Executive Director
From: Toni Tisdale, Principal Planner
Date: December 1, 2014
Re: **Request for Approval of Administrative Modification #2 for the FY2015-2019 Regional Transportation Improvement Program**

ACTION REQUESTED:

Approval of Administrative Modification #2 for the FY2015-2019 Regional Transportation Improvement Program (TIP). These changes will also be reflected in the FY2014-2018 TIP because the FY2015-2019 TIP is not yet officially approved by federal agencies.

BACKGROUND:

Modifications were requested by ACHD and Ada County to use funds from the project set-aside account to fund cost increases.

STATUS:

Per TMA Balancing, November 6, 2014:

- **Set-Aside for STP-TMA Cost Increases – FY2015 (CL150)** – Decrease construction by \$118,000. Move \$100,000 to key number 13479 and \$18,000 to key number 13820. The set-aside account has \$57,000 remaining.
- **Capital Maintenance, ACHD – FY2017 (13479)** – Increase preliminary engineering consultant by \$100,000 for additional design and geotechnical work. Funds are from key number CL150.
- **Natures Wood Duck Island Trail Restoration, Ada County (13820)** – Increase preliminary engineering consultant by \$3,000 and construction by \$15,000 to cover cost overages in design and the final construction bid. Funds are from key number CL150.

Details of the changes are provided in Attachment 1.

Approval:

All changes for Administrative Modification #2, as provided in this memorandum and detailed on Attachment 1, are approved as of December 1, 2014.

**Matthew J. Stoll, Executive Director
Community Planning Association of
Southwest Idaho**

Attachment (1)

pc: 685.03

TT: T:\FY15\600 Projects\685 TIP\FY1519TIP\141201mmoAdminMod2.docx

Administrative Modification or Amendment #2
 FY2015-2019 Regional Transportation Improvement Program
 Per TMA Balancing, November 6, 2014

Key No	Project	Scheduled Costs (including Match) (costs in \$1,000)							
		Cost year	PE	PEC	RW	UT	CE	CN	SUM
CL150	Set-Aside for STP-TMA Cost Increases – FY2015	2015						175	175
	Funding Source: STP-TMA	2016						57	57
	Set-aside for STP-TMA cost increases.	2017							0
		2018							0
		2019							0
		PD							0
	Decrease by \$118,000. Move \$100,000 to KN 13479 and \$18,000 to KN 13820.	SUM	0	0	0	0	0	175	175
							57	57	
13479	Capital Maintenance, ACHD – FY2017	2015	10	150					160
	Funding Source: STP-TMA	2016		250					260
	Supplement the local maintenance program, to complete work such as overlays on arterials and collectors in the Boise Urbanized Area. More details can be found in ACHD's Design and Construction Review online: http://www.achdidaho.org/Projects/DCR/DCR.pdf	2017					215	2030	2245
		2018							0
		2019							0
		PD							0
	Increase by PEC by \$100,000 for additional design and geotechnical work. Funds from KN CL150.	SUM	10	150	0	0	215	2030	2405
			250					2505	
13820	Natures Wood Duck Island Trail Restoration, Ada County	2015		0				0	0
	Funding Source: STP-TMA	2016		3				15	18
	This project will make permanent repairs to a portion of the Boise River Greenbelt within the Bethine Church River Trail area. This unpaved portion of the Greenbelt is next to the Boise River in an area highly susceptible to erosion during high springtime river flows.	2017							0
		2018							0
		2019							0
		PD							0
	Increase PEC by \$3,000 and CN by \$15,000 to cover cost overages in design and the final bid. Funds from KN CL150.	SUM	0	0	0	0	0	0	0
			3				15	18	

PE = Preliminary Engineering

PC = Preliminary Engineering Consultant

RW = Right-of-Way

UT = Utilities

CE = Construction Engineering

CN = Construction

FY = Fiscal Year

KN = Key Number

STP-TMA = Surface Transportation Program – Transportation Management Area (Boise)

T:\FY15\600 Projects\685 TIP\FY1519TIP\Amendments\AdminMod2.docx



Memorandum

To: Matt Stoll, Executive Director
From: Toni Tisdale, Principal Planner
Date: December 1, 2014
Re: **Request for Approval of Administrative Modification #16 for the FY2014-2018 Regional Transportation Improvement Program**

ACTION REQUESTED:

Approval of Administrative Modification #16 for the FY2014-2018 Regional Transportation Improvement Program (TIP).

BACKGROUND:

The FY2014-2018 Regional Transportation Improvement Program (TIP) is the official TIP until the FY2015-2019 TIP is federally approved later this year. New projects, or those including changes, in FY2015 in the FY2015-2019 TIP, requiring obligation of funds in the first quarter (October 1 through December 31, 2014), were changed in the FY2014-2018 TIP to ensure timely obligations. Funding for one project was carried over incorrectly. A conversion from temporary key numbers is also included for new projects, as permanent key numbers were released after processing the amendment.

STATUS:

Per staff review November 18, 2014:

- **Pedestrian Improvements, Lincoln Elementary, Caldwell (19062)** – When this project was added to the FY2014-2018 TIP, amounts from the wrong project were carried over. It was not intended to change the original expectations. The correction aligns with approved amounts in the FY2015-2019 TIP.

Details of this change, as well as a key number conversion table, is provided in Attachment 1.

Approval:

All changes for Administrative Modification #16, as provided in this memorandum and detailed on Attachment 1, are approved as of December 1, 2014.

**Matthew J. Stoll, Executive Director
Community Planning Association**

Attachment (1)

pc: 685.03
TT: T:\FY15\600 Projects\685 TIP\FY1418TIP\141201AdminMod16.docx

Administrative Modification or Amendment #16
 FY2014-2018 Regional Transportation Improvement Program
 Staff Review, November 18, 2014

Key No	Project	Scheduled Costs (including Match) (costs in \$1,000)								
		Cost year	PE	PEC	RW	UT	CE	CN	SUM	
H325 19062	Pedestrian Improvements, Lincoln Elementary, Caldwell	2014							0	
	Funding Source: Community Choices	2015	0 2	66 0				0 63	66 65	
	This project will upgrade sidewalks along Grant Street and provide safe crosswalks, pedestrian ramps and a pedestrian island, and rapid flashing beacons at two major thoroughfares. Sidewalks will be 5-feet wide and will include curb ramps for wheelchair accessibility. The project will also help residents safely access Memorial Park. When this project was added to the FY2014-2018 TIP, amounts from the wrong project were carried over. No change to original expectations are made. This correction aligns with approved amounts in the FY2015-2019 TIP.	2016							0	
		2017					222 0	1117 0	1339 0	
		2018							0	
		PD							0	
		SUM		0 2	66 0	0	0	222 0	1117 63	1405 65

Temporary to Permanent Key Number Conversions

Temporary Key Number	Permanent Key Number	Project
H311	19047	I-84, Sand Hollow Interchange, Canyon County
H312	18950	SH-44, Canyon Canal Bridge, Middleton
H314	18810	ITS, SH-55 (Eagle Road), Signal Timing, Meridian and Boise - FY2019
H321	18830	I-84, Sign Structures at US 20/26 and I-84B/Centennial Way, Caldwell
H323	18779	SH-55 (Karcher Road) and Hoskins, Pride, and Riverside, Canyon County
H328	18867	Pedestrian Improvements, Stoddard Pathway/Greenhurst Road, Nampa
H330	18954	Pedestrian Improvements, Middleton Heights Elementary, Middleton
H332	18895	Pathway, Warm Springs, Ada County

T:\FY15\600 Projects\685 TIP\FY1418TIP\Amendments\AdminMod16.docx

Memorandum

To: Matt Stoll, Executive Director
From: Toni Tisdale, Principal Planner
Date: November 6, 2014
Re: **Request for Approval of Administrative Modification #1 for the FY2015-2019 Regional Transportation Improvement Program**

ACTION REQUESTED:

Approval of Administrative Modification #1 for the FY2015-2019 Regional Transportation Improvement Program (TIP). These changes should also be reflected in the FY2014-2018 TIP as well, because the FY2015-2019 TIP is not officially approved by federal agencies.

BACKGROUND:

Modifications were requested by ACHD to de-obligate funds from projects that are closing and re-program those funds to projects with funding needs. Modifications are also needed to provide one minor change through final staff review and to convert temporary key numbers to permanent key numbers.

STATUS:

Per TMA Balancing, October 2, 2014:

- **Franklin Road and Cloverdale Road Intersection (08698)** – Reduce project by \$534,000, leaving \$54,000 to cover project closing expenses and category overages. Move funds to KN 11582 and KN 13514.
- **Five Mile Road, Franklin Road to Fairview Avenue (11582)** – Increase project by \$405,000 to cover cost increases in right-of-way and construction and overages in preliminary engineering construction and construction engineering. Funds from KN 08698.
- **Transit – Vans – FY2009 (11787)** – Decrease project by \$96,617 to close out the project. Funds are not reprogrammed in order to cover over programming.
- **State Street ITS, SH-16 to 23rd Street, Boise, ACHD (12366)** – Decrease project by \$207,995 to close out the project. Move funds to KN 13481 and KN 13514. Part of the balance is not reprogrammed because the STP-TMA program is over programmed in FY2015.
- **State Street and Collister Drive Intersection, ACHD (13481)** – Increase right-of-way by \$65,000 to relocate a billboard. Funds from KN 12366.
- **Pathway, Garden City to Americana Boulevard, Boise (13514)** – Increase preliminary engineering consultant by \$6,000 and construction by \$125,000. \$71,000 was “borrowed” from construction to cover the design bid, which still needed an additional \$6,000. This action replaces the borrowed funds to construction. Through an amendment later, the construction funds in FY2016 will be traded to an ACHD project. This action allows the trade to occur. New funds from KN 08698 and KN 12366.

Per ACHD Request, October 2, 2014:

- **Maple Grove Road, Franklin Road to Fairview Avenue (07192)** – Reduce project by \$875,000, leaving \$50,000 to cover project closing expenses and category overages. Return funds to ACHD, as these are local funds.

Per Staff Review, September 23, 2014:

- **SH-55 (Karcher Road) and Hoskins, Pride, and Riverside Streets, Canyon County (H323)** – Increase preliminary engineering consultant by \$50,000 in FY2015. The addition of design funds was missed by staff.

The table showing details of the conversion of temporary to permanent key numbers is provided in Attachment 1, along with funding details for the projects listed above.

Approval:

All changes for Administrative Modification #1, as provided in this memorandum and detailed on Attachment 1, are approved as of November 6, 2014.



**Matthew J. Stoll, Executive Director
Community Planning Association of
Southwest Idaho**

Attachment (1)
pc: 685.03
TT:nb T:\FY15\600 Projects\685 TIP\FY1519TIP\141106mmoAdminMod1.docx

Administrative Modification #1
 FY2015-2019 Regional Transportation Improvement Program
 Per TMA Balancing, October 2, 2014

Key No	Project	Cost year	Scheduled Costs (including Match) (costs in \$1,000)							
			PE	PEC	RW	UT	CE	CN	SUM	
08698	Franklin Road and Cloverdale Road Intersection	2015		0	0	0	0	0	0	
	Funding Source: STP-TMA	2016		-138	-10	-127	-43	-216	-534	
	Widen the intersection at Franklin Road and Cloverdale Road. (Project tied to KN 12062)	2017							0	
		2018							0	
		2019							0	
		PD							0	
	Decrease project by \$534,000, leaving \$54,000 to cover project closing expenses and category overages. Move funds to KN 11582 and 13514.	SUM	0	0	-138	-10	-127	-43	-216	-534
11582	Five Mile Road, Franklin Road to Fairview Avenue, ACHD	2015		0	0		0	0	0	
	Funding Source: STP-TMA	2016		1	178		6	220	405	
	Project includes construction work on Five Mile Road, not including the Fairview intersection. Widen to five lanes with shoulder, sidewalk, and railroad crossing improvements.	2017							0	
		2018							0	
		2019							0	
		PD							0	
	Increase project by \$405,000 to cover cost increases and category overages. Funds from KN 08698.	SUM	0	0	1	178	0	6	220	405
11787	Transit - Vans - FY2009	2015						0	0	
	Funding Source: STP-TMA	2016						-97	-97	
	New and replacement Commuteride van purchase.	2017							0	
		2018							0	
		2019							0	
		PD							0	
	Decrease project by \$96,617 to close out the project. Funds are not reprogrammed.	SUM	0	0	0	0	0	0	-97	-97
12366	State Street ITS, SH-16 to 23 rd Street, Boise, ACHD	2015	0	0			0	0	0	
	Funding Source: STP-TMA	2016	-5	-9			-8	-186	-208	
	Install intelligent transportation system (ITS) devices on State Street, including closed circuit television cameras, speed detection systems, fiber optic communications cable, dynamic message signs, upgraded traffic signal controllers, and re-time traffic signals.	2017							0	
		2018							0	
		2019							0	
		PD							0	
	Decrease project by \$207,995 to close out the project. Move funds to KN 13481 and 13514. Part of the balance is not reprogrammed.	SUM	0	0	-5	-9	0	0	-8	-186

Key No	Project	Scheduled Costs (including Match) (costs in \$1,000)							
		Cost year	PE	PEC	RW	UT	CE	CN	SUM
13481	State Street and Collister Drive Intersection, ACHD	2015			320				320
					385				385
	Funding Source: STP-TMA	2016							0
		2017				610	4030		4640
	Intersection improvements at State Street and Collister Drive in the City of Garden City.	2018							0
		2019							0
		PD							0
	SUM	0	0	320	610	4030	0	4960	
				385				5025	
13514	Pathway, Garden City to Americana Boulevard, Boise	2015		71	110	50	245	725	1201
				77				921	1403
	Funding Source: STP-TMA	2016						125	125
		2017							0
	Construct a new 12-foot wide paved pathway south of the Boise River to fill a significant 4,100 linear gap in the greenbelt system. The pathway will extend from Main Street (Joe's Crab Shack) to Ann Morrison Park at Americana Boulevard to serve pedestrians and bicyclists.	2018							0
		2019							0
		PD							0
	SUM	0	71	110	50	245	725	1201	
			77				1046	1528	
13514	Pathway, Garden City to Americana Boulevard, Boise	2015							0
	Funding Source: Community Choices	2016						353	353
		2017							0
	Same as above.	2018							0
		2019							0
	No change to this funding source.	PD							0
		SUM	0	0	0	0	0	353	353
13514	Pathway, Garden City to Americana Boulevard, Boise	2015						25	25
	Funding Source: Local Participating	2016							0
		2017							0
	Same as above.	2018							0
		2019							0
	No change to this funding source.	PD							0
		SUM	0	0	0	0	0	25	25
13514	Pathway, Garden City to Americana Boulevard, Boise	2015						220	220
	Funding Source: TAP-TMA	2016						255	255
		2017							0
	Same as above.	2018							0
		2019							0
	No change to this funding source.	PD							0
		SUM	0	0	0	0	0	475	475

Per ACHD Request, October 2, 2014

Key No	Project	Scheduled Costs (including Match) (costs in \$1,000)							
		Cost year	PE	PEC	RW	UT	CE	CN	SUM
07192	Maple Grove Road, Franklin Road to Fairview Avenue	2015	0 -2	0	0	0	0 13	0 -556	0 -875
	Funding Source: Local Participating	2016							0
		2017							0
		2018							0
		2019							0
		PD							0
		SUM	0 -2	0	0	0	0 13	0 -556	0 -875
		Widen roadway to five lanes with bike lanes, sidewalk, railroad crossing improvement, and conduit for future signal at Irving Street. This includes rebuilding Bridge #151 and the intersection of Fairview Avenue and Maple Grove Road. The Fairview Avenue intersection will include double left turns on all legs, two through lanes on all legs, and right turn lanes on the east and west bound legs. Reduce project by \$875,000, leaving \$50,000 to cover project closing expenses and category overages. Return funds to ACHD.							

Per Staff Review, September 23, 2014

Key No	Project	Scheduled Costs (including Match) (costs in \$1,000)							
		Cost year	PE	PEC	RW	UT	CE	CN	SUM
H323	SH-55 (Karcher Road) and Hoskins, Pride, and Riverside <u>Streets</u> , Canyon County	2015	0 50						0 50
	Funding Source: Strategic Initiatives	2016							0
		2017							0
		2018							0
		2019					155	1390	1545
		PD							0
		SUM	0 50	0	0	0	0	0	1545 1595
		Safety and operational improvements on SH-55 (Karcher Road) at the intersections of Hoskins Road, Pride Lane, and Riverside Road. Increase PEC by \$50,000 in FY2015. The addition of design funds was missed by staff.							

Temporary to Permanent Key Number Conversions

Temporary Key Number	Permanent Key Number	Project
C301	18948	Planning, Freight and Goods Movement Study Update, COMPASS
C302	18694	Planning, Transportation Operations, Mgmt., and ITS Plan Update
C303	18998	Planning, Congestion Management Study, COMPASS
C304	18728	Capital Maintenance, ACHD - FY2020
C305	18701	Capital Maintenance, ACHD - FY2020

Temporary Key Number	Permanent Key Number	Project
C306	18821	Rideshare, ACHD (Ada County - FY2019)
C307	18847	Capital Maintenance, Alternative Transportation Set-Aside, Boise - FY2019
C308	19057	Capital Maintenance, Alternative Transportation Set-Aside, Boise - FY2020
C309	18905	Capital Maintenance, Alternative Transportation Set-Aside, Boise - FY2021
C310	19060	Planning, COMPASS (PD)
C311	18877	SR2S, VRT, Ada County - PD
C315	18717	Cherry Lane, Linder Road to Meridian Road, Lighting Improvements, ACHD
C316	18702	ITS, Northside Boulevard/Kinds Road Signal Upgrades, Nampa
H311	19047	I-84, Sand Hollow Interchange, Canyon County
H312	18950	SH-44, Canyon Canal Bridge, Middleton
H314	18810	ITS, SH-55 (Eagle Road), Signal Timing, Meridian and Boise - FY2019
H321	18830	I-84, Sign Structures at US 20/26 and I-84B/Centennial Way, Caldwell
H323	18779	SH-55 (Karcher Road) and Hoskins, Pride, and Riverside, Canyon County
H325	19062	Pedestrian Improvements, Lincoln Elementary, Caldwell
H328	18867	Pedestrian Improvements, Stoddard Pathway/Greenhurst Road, Nampa
H330	18954	Pedestrian Improvements, Middleton Heights Elementary, Middleton
H331	18838	Pathway, Mill Creek Elementary, Middleton
H332	18895	Pathway, Warm Springs, Ada County
H335	19065	Pedestrian Improvements, Lake Lowell Pathway, Nampa
H336	19008	SH-44, ADA Ramp Improvements, Middleton
H338	18872	SH-16 and Beacon Light Road Intersection Improvements, Ada County
H339	18833	ITS, SH-55 (Eagle Road) Adaptive Signals, Ada County
H340	19111	US 20/26 and Franklin Road, Canyon County
H344	18787	SH-55, Overhead Message Sign Near Avimor, Ada County
H910	19071	Planning, Metropolitan Planning Funds, COMPASS - FY2019
T301	19042	Rideshare, Commuteride Replacement Vans, ACHD
T302	18718	Pedestrian Improvements, College of Western Idaho, Nampa
T303	18977	Pedestrian Improvements, Near Nampa High, Nampa
T304	19069	Pedestrian Improvements, Near Skyview High, Nampa
T305	18700	Rideshare, Commuteride Replacement Vans, ACHD
T306	18855	Transit - Acquisition of Service, Kuna and Star
T307	18920	Transit - Vehicle Maintenance, Kuna Senior Center, Boise
T308	18890	Transit - Vehicle Replacement, Good Samaritan Society, Boise

Temporary Key Number	Permanent Key Number	Project
T309	18790	Transit - Acquisition of Service Canyon County, Nampa
T310	18989	Transit - Demand Response, Nampa
T311	18893	Transit - Accessible Vehicles, Vehicle Sharing Pool, Boise
T312	19079	Transit - Accessible Vehicles, Vehicle Sharing Pool, Nampa
T313	19144	Planning, Metropolitan Planning Funds, COMPASS
T314	18788	Transit - Associated Capital Enhancements, Boise
T315	18781	Transit - Associated Capital Enhancements, Nampa
T316	19081	Transit - Associated Capital Improvements, Boise
T317	18911	Transit - Associated Capital Improvements, Nampa
T318	19122	Transit - Capital Lease or Purchase and Maintenance, Boise
T319	19131	Transit - Capital, Safety and Security, Boise
T320	18685	Transit- Capital, Safety and Security, Nampa
T321	18785	Transit - Demand Response Operations, Boise
T322	18762	Transit - Demand Response Operations, Nampa
T323	18786	Transit - Fixed Line Operations, Nampa
T324	18854	Transit - Mobility Management Implementation, Boise
T325	18842	Transit - Mobility Management Implementation, Nampa
T326	19041	Transit - Mobility Operations, Boise
T327	19023	Transit - Mobility Operations, Nampa
T328	18677	Planning, Transit, VRT, Boise
T329	18805	Planning, Transit, VRT, Nampa
T330	19137	Transit - Preventive Maintenance, Boise
T331	18914	Transit - Preventive Maintenance, Nampa
T332	19145	Transit - Acquisition of Service Set-Aside, Boise
T333	18739	Transit - Acquisition of Service Set-Aside, Nampa
T334	18884	Transit - Technology, VRT, Boise
NP570	18929	Transit - Capital Lease or Purchase and Maintenance, Nampa

PE = Preliminary Engineering

PC = Preliminary Engineering Consultant

RW = Right-of-Way

UT = Utilities

CE = Construction Engineering

CN = Construction

FY = Fiscal Year

KN = Key Number

STP-TMA = Surface Transportation Program - Transportation Management Area (Boise)

TAP-TMA = Transportation Alternatives Program - Transportation Management Area (Boise)

T:\FY15\600 Projects\685 TIP\FY1519TIP\Amendments\AdminMod1.docx